

ROTARY CUTTERS

KAPINA COFFEE 2300R

Code: 0501094067
Series: S-0624
Revision: 00
Revision Date: MARCH/2025

PARTS CATALOGUE



MARCHESAN



PRODUCTS

Code	Working Width	Description
0104120098		KAPINA COFFE 2300 R S-0624

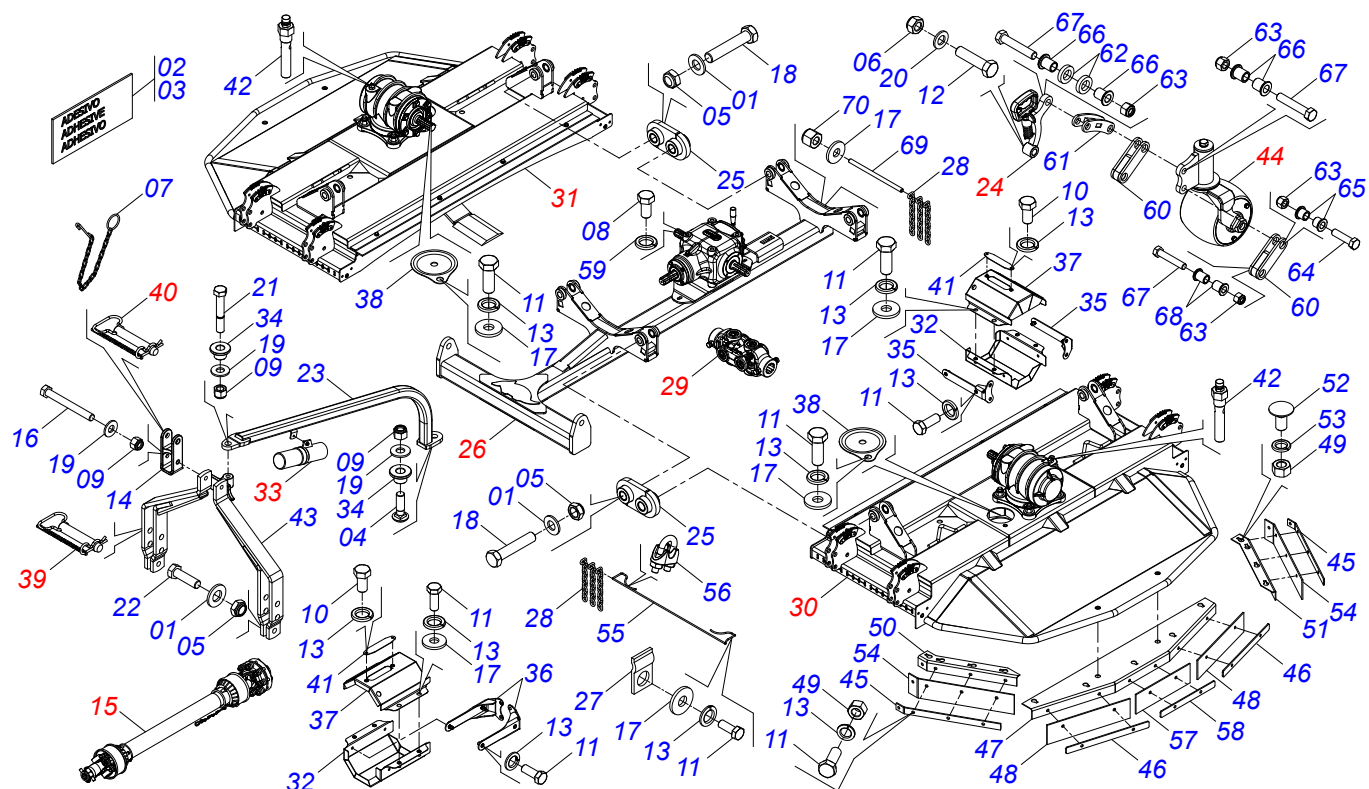
ATTENTION: IMPORTANT

Marchesan S.A. reserves the right to improve and/or modify the technical features of its products, without obligation to do the same with those products already sold and without prior knowledge of the dealer or the customer. The photos are only illustrative.



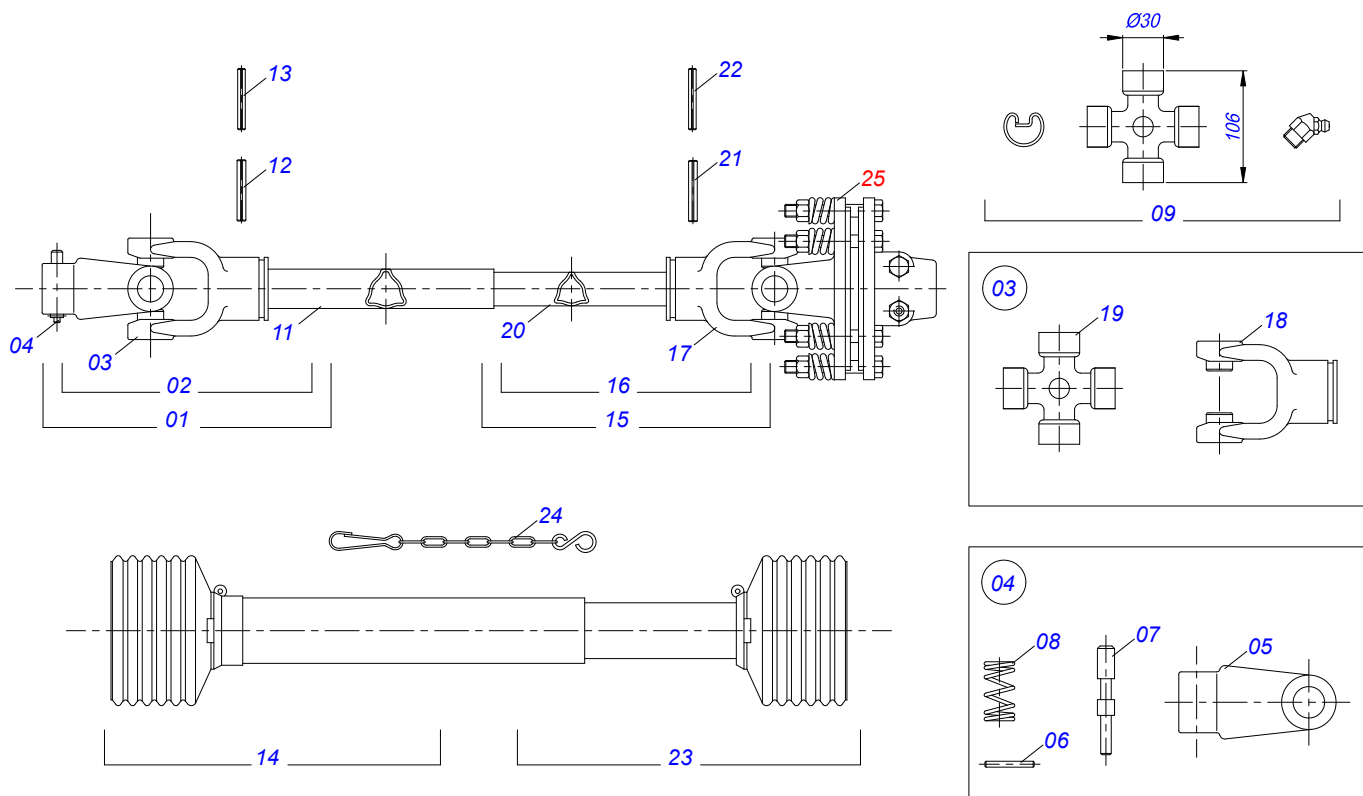
INDEX

0531045961	FRAME ASSY RC2 E 2300 R S-0624	1
0501045426	DRIVE SHAFT	2
0501049150	90 KGM FRICTION	3
0541052669	HEIGHT CONTROL REGULATOR	4
0541054835	CENTRAL FRAME WITH DISTRIBUTOR	5
0541052334	DOUBLE JOINT ASSY	6
0541054851	FRAME SEMI ASSEMBLED LEFT SIDE	7
0541051535	340 SUPPORT ASSY	8
0501046948	MULTIPLIER	9
0541054852	FRAME SEMI ASSEMBLED RIGHT SIDE	10
0541057184	MANUAL ASSY SUPPORT KAPINA COFFEE	11
0521054328	AXLE 27,80 X EC 130 ASSY	12
0521054135	AXLE 25,00 X EC 130 ASSY	13
0531045962	CARRYING WHEELS WITH SUPPORT	14

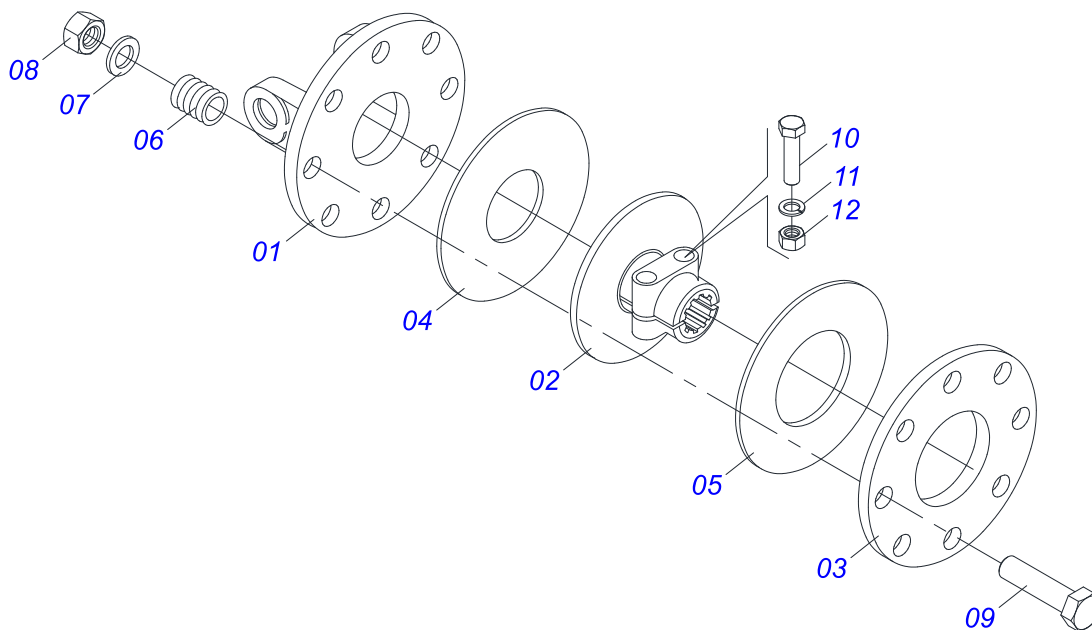


Item	Code	Description	See page	QT
01	0511015994	FLAT WASHER		10
02	0503034247	LUBRICATION POINT DECAL		03
03	0503031087	AUTO CONTROL APPROVED DECAL		01
04	0503014249	3/4" X 2-1/2" BOLT		01
05	0503014182	SELF-ADJUSTING NUT		10
06	0503013389	5/8" SELF LOCKING NUT		08
07	0503011981	17.7" CHAIN WITH HOOK/LINK		01
08	0503011167	M16 X 2 X 30 BOLT		04
09	0503011075	3/4 UNC LOCK NUT		03
10	0503010256	3/8" X 3/4" BOLT		06
11	0503010237	BOLT 3/8" X 1"		62
12	0503010233	5/8 UNC X 2.1/2 CS G.5 ZN BOLT		08
13	0503010025	SPRING WASHER 3/8"		68
14	0502040922	DRAWBAR SUPPLEMENT		01
15	0501045426	DRIVE SHAFT	2	01
16	0501011545	3/4" X 6-1/2" BOLT		01
17	0501010984	FLAT WASHER 10.50 X 27 X 3.00		24
18	0501010392	1" X 5" BOLT		08
19	0501010322	FLAT WASHER 20.50 X 46 X 4.00 ZN		03
20	0501010301	FLAT WASHER 16 X 29,50 X 3,00		08
21	0501010216	3/4 UNC X 4.1/2 C S G.5 ZN BOLT		01
22	0501010171	BOLT 1 UNC X 3.1/2 C S G.5		02
23	0531069081	ATTACHMENT BAR		01
24	0541052669	HEIGHT CONTROL REGULATOR	4	08
25	0501111261	FRAME JOINT WITH SLEEVE		04
26	0541054835	CENTRAL FRAME WITH DISTRIBUTOR	5	01
27	0501315042	1/4 STEEL CABLE CLAMP		08
28	0503036597	10 LINK CHAIN		71
29	0541052334	DOUBLE JOINT ASSY	6	02
30	0541054851	FRAME SEMI ASSEMBLED LEFT SIDE	7	01
31	0541054852	FRAME SEMI ASSEMBLED RIGHT SIDE	10	01

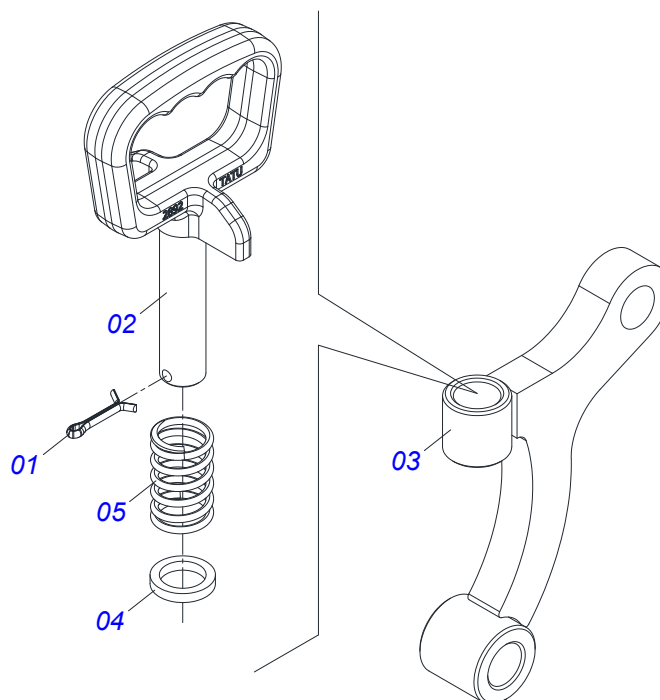
Item	Code	Description	See page	QT
32	0501111144	BOTTOM PROTECTION COVER COUPLING WITH RIVET		03
33	0541057184	MANUAL ASSY SUPPORT KAPINA COFFEE	11	01
34	0591014147	SIDE SUPPORT GUIDE SLEEVE		02
35	0501110996	LOWER SUPPORT COVER PROTECTION WITH RIVET		04
36	0501110997	LARGER SUPPORT COVER PROTECTION		02
37	0501110998	CARDAN TOP PROTECTION COVER		03
38	0591012025	ACCESS COVER		02
39	0521054328	AXLE 27,80 X EC 130 ASSY	12	02
40	0521054135	AXLE 25,00 X EC 130 ASSY	13	01
41	0581012546	LUBRICATION AXIS TRANSMISSION		03
42	0501110186	OIL SMALLER LEVEL INDICATOR		02
43	0501066446	DRAWBAR		01
44	0531045962	CARRYING WHEELS WITH SUPPORT	14	08
45	0501414109	PROTECTION COVER FIXING BAR		04
46	0501414112	PROTECTION COVER FIXING BAR		04
47	0501414111	PROTECTION COVER CENTRAL FIXING SUPPORT		02
48	0503037134	PROTECTION RUBBER BLANKET		04
49	0503010026	NUT 3/8"		54
50	0501414110	PROTECTION COVER LEFT FIXING SUPPORT		02
51	0501414108	PROTECTION COVER RIGHT FIXING SUPPORT		02
52	0503013029	3/8" X 3/4" BOLT		26
53	0503011443	SPRING WASHER 3/8"		26
54	0503037138	RIGHT PROTECTION RUBBER BLANKET		04
55	0501414120	STEEL CABLE 3/16 AF X 1520		04
56	0503031639	CABLE STEEL STAPLE 3/16		08
57	0503037213	PROTECTION RUBBER BLANKET		02
58	0501415115	PROTECTION COVER FIXING BAR		02
59	0501415860	WASHER		04
60	0531069987	WHEEL ARM ADJUSTMENT		16
61	0531069986	WHEEL ARM ADJUSTMENT		08
62	0508417422	WASHER		16
63	0503010589	SELF ADJUSTING NUT 1/2" UNC		40
64	0503010740	BOLT 1/2 UNC X 2 CS G.5 ZN		08
65	0501417861	SLEEVE		16
66	0501414104	SLEEVE		32
67	0503010741	1/2" X 2-3/4" BOLT		32
68	0501416824	SLEEVE		32
69	0501417856	CHAINS PROTECTION BAR		01
70	0503013759	NUT		02



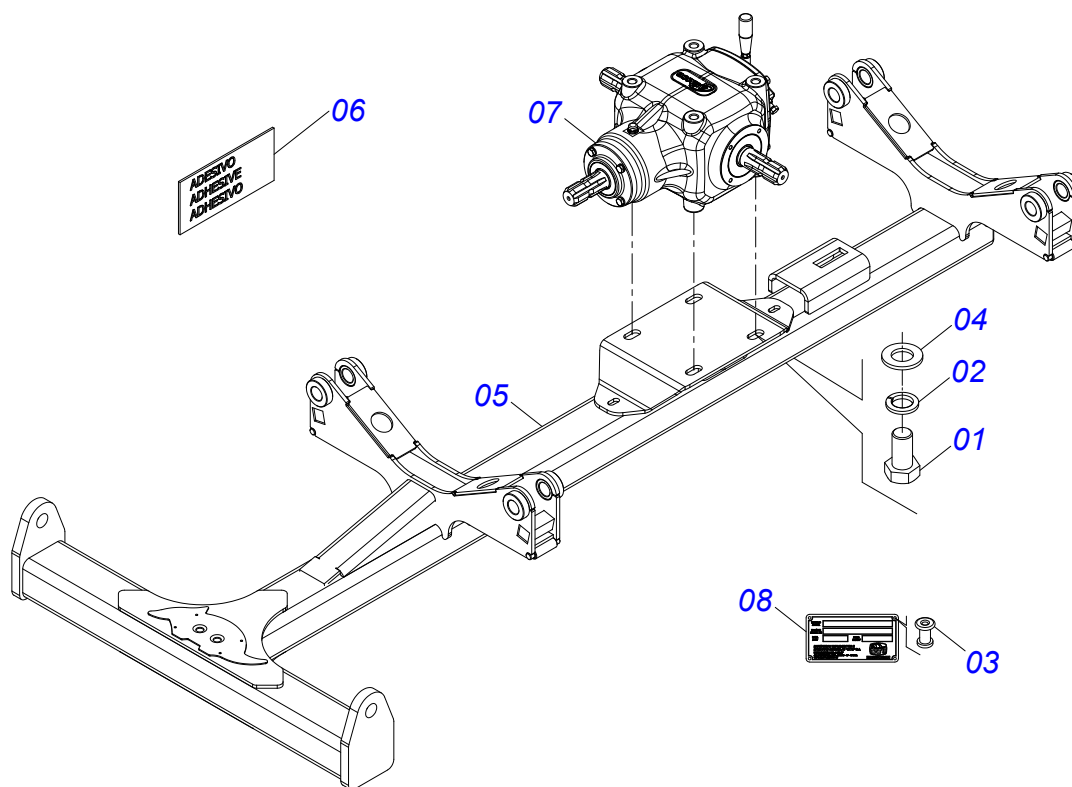
Item	Code	Description	See page	QT
01	0501052529	UNIVERSAL JOINT WITH SLEEVE/PROT		01
02	0501052523	UNIVERSAL JOINT WITH SLEEVE		01
03	0501052524	UNIVERSAL JOINT		01
04	0501050334	1-60 TERMINAL WITH QUICK HITCH		01
05	0502010568	1-60 STRIATED 1.3/8" TERMINAL		01
06	0503010838	SPRING PIN 0.1" X 0.8"		02
07	0503037375	PIN QUICK COUPLING		02
08	0503030518	COMPRESSION SPRING 0.5"X1.0"X 0.1"		02
09	0503010837	CARDAN CROSSPIECE		01
10	0503012608	T2-60/CI51 TERMINAL		01
11	0503012609	2.1" X 2.0" X 35" TRIAN FEMALE TUB		01
12	0503010843	0.4" X 3.3" SPRING PIN		01
13	0503011878	0.2" X 3.3" SPRING PIN		01
14	0503012075	PROTECTION FOR UNIV JOINT AND SLEEV		01
15	0501052554	UNIVERSAL JOINT WITH SHAFT/PROT		01
16	0501052553	UNIVERSAL JOINT WITH CROSS/SHAFT		01
17	0501052520	UNIVERSAL JOINT WITH CROSSPIECE		01
18	0503012600	T3-60/CI52 TERMINAL		01
19	0503010837	CARDAN CROSSPIECE		01
20	0503012610	1.8" X 1.7" X 35" TRIAN MALE TUB		01
21	0503011069	SPRING PIN 0.4" X 2.8"		01
22	0503011805	0.2" X 2.8" SPRING PIN		01
23	0503012076	PROTECTION FOR UNIV JOINT AND AXLE		01
24	0503012023	CHAIN FOR PROTECTION		02
25	0501049150	90 KGM FRICTION	3	01



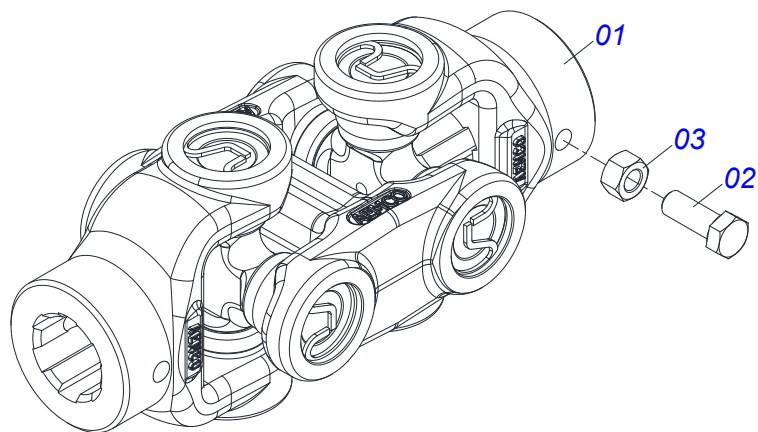
Item	Code	Description	See page	QT
01	0503031588	FRONT FLANGE		01
02	0503011869	CENTRAL FLANGE		01
03	0503011870	REAR FLANGE		01
04	0503031474	INNER FRICTION DISC		01
05	0503031478	OUTER FRICTION DISC		01
06	0503030630	1.02"X1.3"X0.2" COMPRESSION SPRING		08
07	0511017302	FLAT WASHER 13.50 X 32.50 X 3.0 ZN		08
08	0503011336	1/2" HEX SELF ADJUSTING NUT		08
09	0503010752	1/2" X 3.1/2" BOLT		08
10	0503010741	1/2" X 2-3/4" BOLT		02
11	0503010019	SPRING WASHER 1/2"		02
12	0503010060	HEX NUT 1/2 UNC G.5 ZN		02



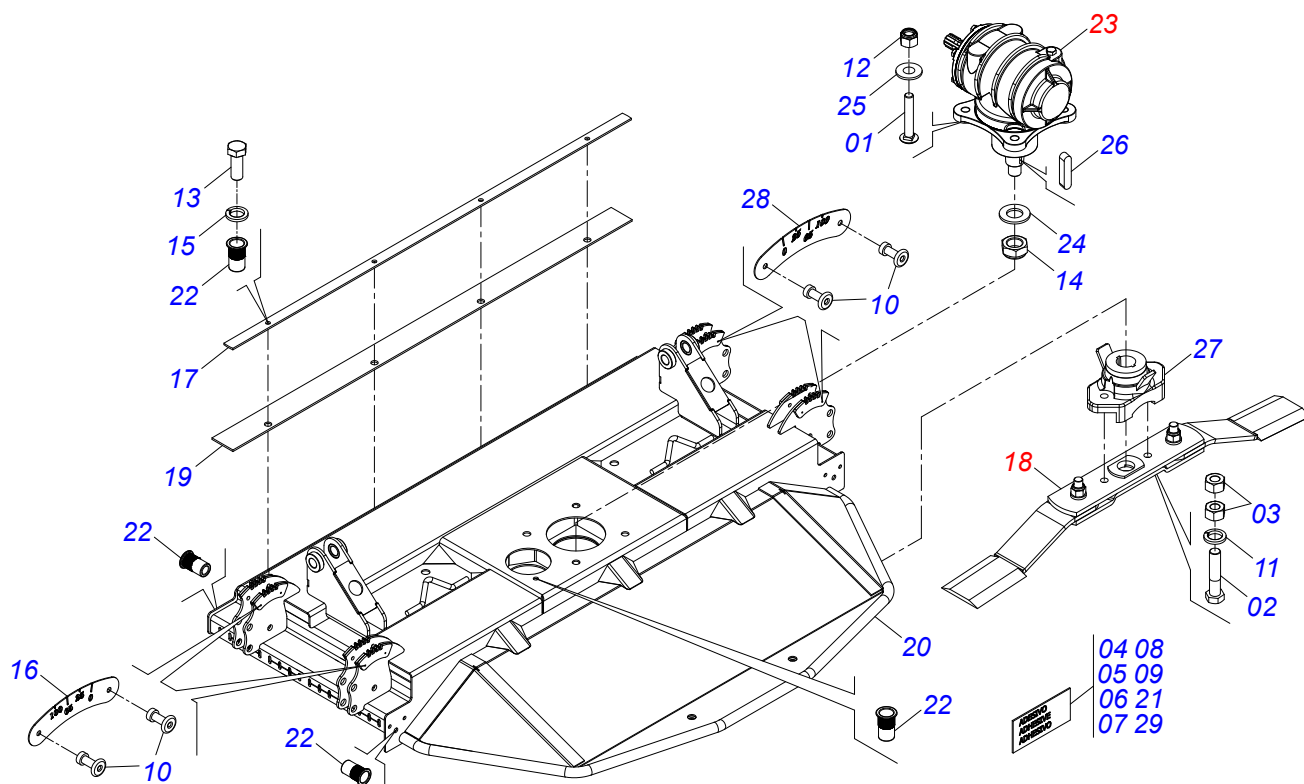
Item	Code	Description	See page	QT
01	0503010257	1/8" X 1" SPLIT PIN		01
02	0502012964	HANDLE		01
03	0531067223	ARM		01
04	0581019519	FLAT WASHER		01
05	0503030975	0.9" X 1.5" X 0.1" SPRING		01



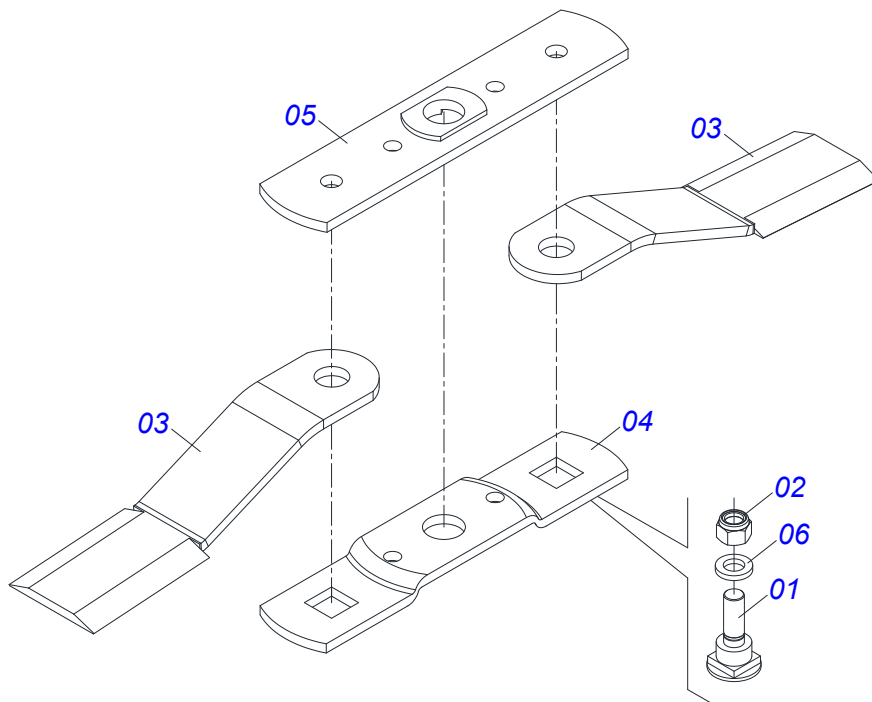
Item	Code	Description	See page	QT
01	0503011167	M16 X 2 X 30 BOLT		04
02	0503010027	SPRING WASHER 5/8"		04
03	0503010001	RIVET 3,2 X 5,5		04
04	0501011299	FLAT WASHER		04
05	0531069053	CENTRAL FRAME		01
06	0503034078	LIFTING POINTS DECAL		04
07	0503063554	TRANSMISSION BOX DISTRIBUTOR		01
08	0503034003	61 X 118 SERIAL NUMBER TAG		01



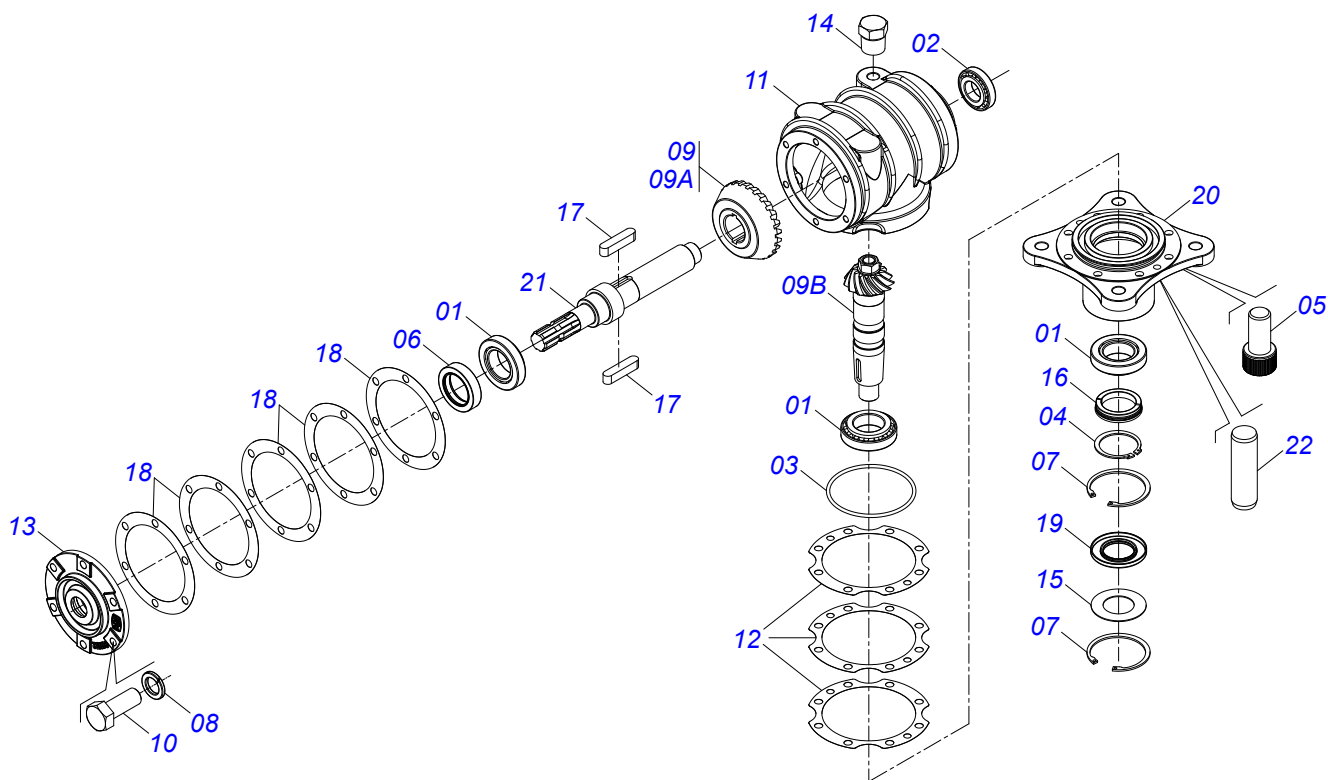
Item	Code	Description	See page	QT
01	0503064255	CCH-2500 (CC313H313) JOINT		01
02	0503010237	BOLT 3/8" X 1"		04
03	0503010026	NUT 3/8"		04



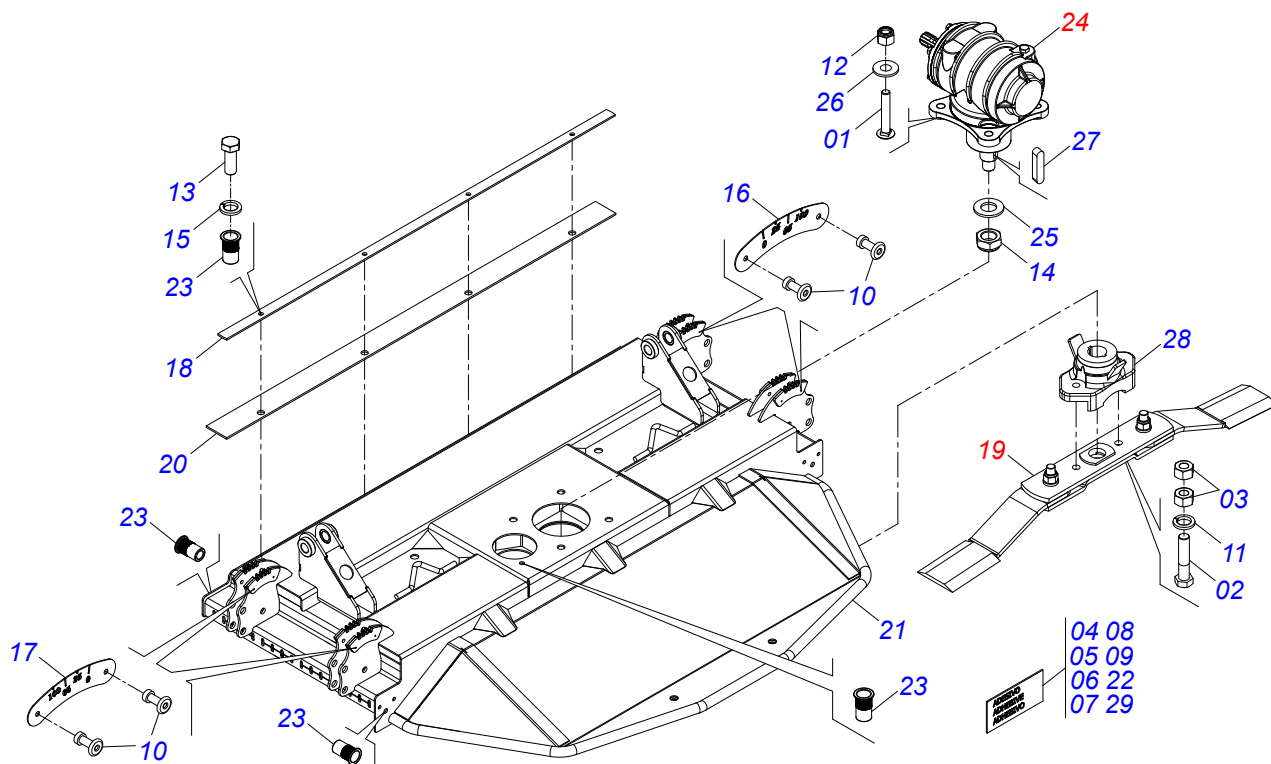
Item	Code	Description	See page	QT
01	0503017867	SCREW 3/4 UNC X 4.1/2 CAPQ G.7 ZN		04
02	0503010901	3/4UNC 3.1/2 BOLT		02
03	0503010014	HEX NUT 3/4" ZN G.5 (HEAVY) UNC		04
04	0503032949	ATTENTION 3 LANGUAGES DECAL		01
05	0503032535	SIDE CARDAN DECAL		01
06	0503032534	IMPORTANT FRICTION ADJUSTMENT DECAL		01
07	0503032060	50 METERS DISTANCE DANGER DECAL		01
08	0503031930	DANGER ROTATING BLADES DECAL		01
09	0503031127	RESPIRO DECAL		01
10	0503013356	RIVET POP 3,2 X 10,0		16
11	0503011442	3/4" SPRING WASHER		02
12	0503011075	3/4 UNC LOCK NUT		04
13	0503010237	BOLT 3/8" X 1"		04
14	0503010044	SELF LOCKING NUT 1.1/4 UNF G.5 ZN		01
15	0503010025	SPRING WASHER 3/8"		04
16	0501414119	RIGHT SCALE		04
17	0501318348	PROTECTIVE CANVAS FIXING RULER		01
18	0541051535	340 SUPPORT ASSY	8	01
19	0503036660	RUBBER BLANKET		01
20	0531069056	RIGHT AND LEFT SIDE FRAME		01
21	0503034078	LIFTING POINTS DECAL		02
22	0503019413	THREAD SCREW INTERNAL		09
23	0501046948	MULTIPLIER	9	01
24	0501017779	FLAT WASHER 32 X 60 X 4,75		01
25	0501010322	FLAT WASHER 20.50 X 46 X 4.00 ZN		04
26	0501010536	KEYWAY SQUARE		02
27	0502012453	SUPPORT FLANGE		01
28	0501414118	LEFT SCALE		04
29	0503034333	TATU MARCHESAN LOGO DECAL		01



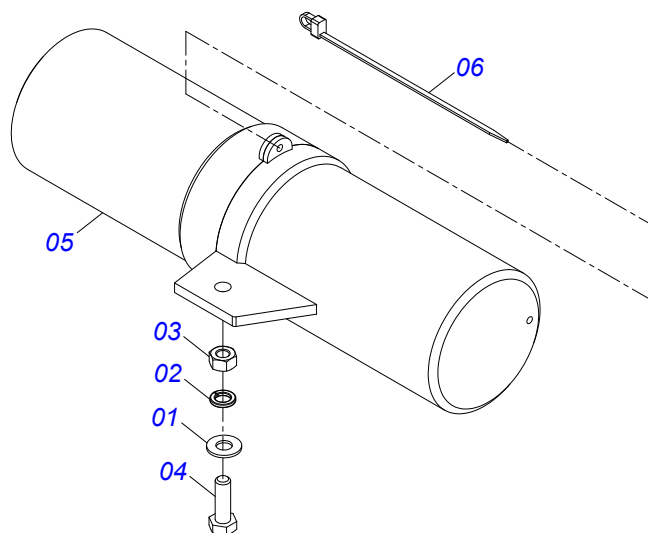
Item	Code	Description	See page	QT
01	0511819000	FASTERNER ROCADORES		02
02	0503010812	SELF LOCKING NUT 7/8" UNF		02
03	0622400045	BRUSHCUTTER		02
04	0561017368	ROTARY LOWER SUPPORT		01
05	0561017308	SUPPORT UPPER BASE		01
06	0501816249	FLAT WASHER		02



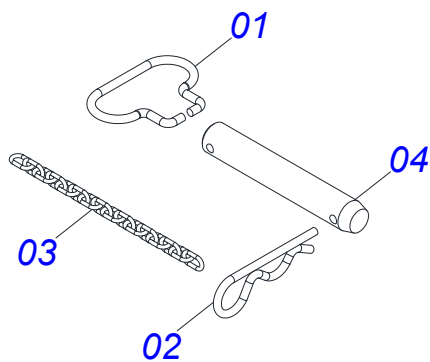
Item	Code	Description	See page	QT
01	0503010006	32210 ROLLER BEARING		03
02	0503010037	30207 ROLLER BEARING		01
03	0503010286	2-355 N 3006-9B O'RING		01
04	0503010396	501060 CLAMPING RING (FOR AXLE)		01
05	0503010562	1/2" X 1" BOLT		08
06	0503011171	00912-BRG SEAL		01
07	0503011190	SEAL RING		02
08	0503011440	SPRING WASHER		06
09	0503060211	CROWN PINION SET		01
09A	0503050069	25Z CONICAL GEAR		01
09B	0503061048	PINION		01
10	0503810395	SCREW 1/2 UNC X 1.1/4 CSRT G.5 SA		06
11	0502010984	LEFT MULTIPLIER BOX		01
12	0503030785	7.9" X 5.9" X 0.008" JOINT		03
13	0502011152	SMALLER COVER		01
14	0503031604	1/2" BSP PLUG		01
15	0521818064	FLAT WASHER		01
16	0511010142	LOCK RING		01
17	0501010536	KEYWAY SQUARE		02
18	0503030783	7.1" X 5.3" X 0.008" JOINT		05
19	0503011047	5089 SEAL		01
20	0502011393	LOWER HUB		01
21	0503050067	UPPER AXLE		01
22	0503017877	PIN GUIDE		02



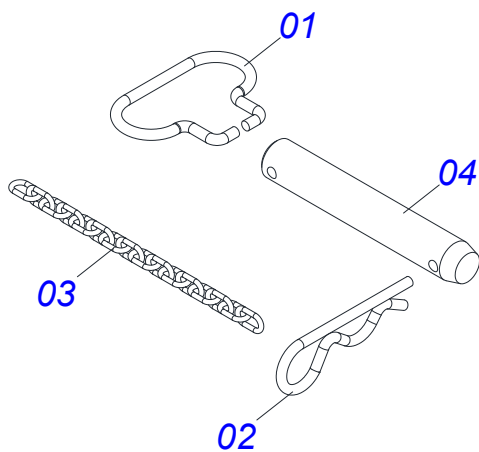
Item	Code	Description	See page	QT
01	0503017867	SCREW 3/4 UNC X 4.1/2 CAPQ G.7 ZN		04
02	0503010901	3/4UNC 3.1/2 BOLT		02
03	0503010014	HEX NUT 3/4" ZN G.5 (HEAVY) UNC		04
04	0503032534	IMPORTANT FRICTION ADJUSTMENT DECAL		01
05	0503031932	90 OIL RETIGHTEN LUBRICATION DECAL		01
06	0503031929	SPECIAL BLADES EQUIPMENT DECAL		01
07	0503031428	ATTENTION READ MANUAL DECAL		01
08	0503031427	ATTENTION POWER SPOT DECAL		01
09	0503031127	RESPIRO DECAL		01
10	0503013356	RIVET POP 3,2 X 10,0		16
11	0503011442	3/4" SPRING WASHER		02
12	0503011075	3/4 UNC LOCK NUT		04
13	0503010237	BOLT 3/8" X 1"		04
14	0503010044	SELF LOCKING NUT 1.1/4 UNF G.5 ZN		01
15	0503010025	SPRING WASHER 3/8"		04
16	0501414118	LEFT SCALE		04
17	0501414119	RIGHT SCALE		04
18	0501318348	PROTECTIVE CANVAS FIXING RULER		01
19	0541051535	340 SUPPORT ASSY	8	01
20	0503036660	RUBBER BLANKET		01
21	0531069056	RIGHT AND LEFT SIDE FRAME		01
22	0503034078	LIFTING POINTS DECAL		02
23	0503019413	THREAD SCREW INTERNAL		09
24	0501046948	MULTIPLIER	9	01
25	0501017779	FLAT WASHER 32 X 60 X 4,75		01
26	0501010322	FLAT WASHER 20.50 X 46 X 4.00 ZN		04
27	0501010536	KEYWAY SQUARE		02
28	0502012453	SUPPORT FLANGE		01
29	0503037367	KAPINA COFFEE DECAL		01



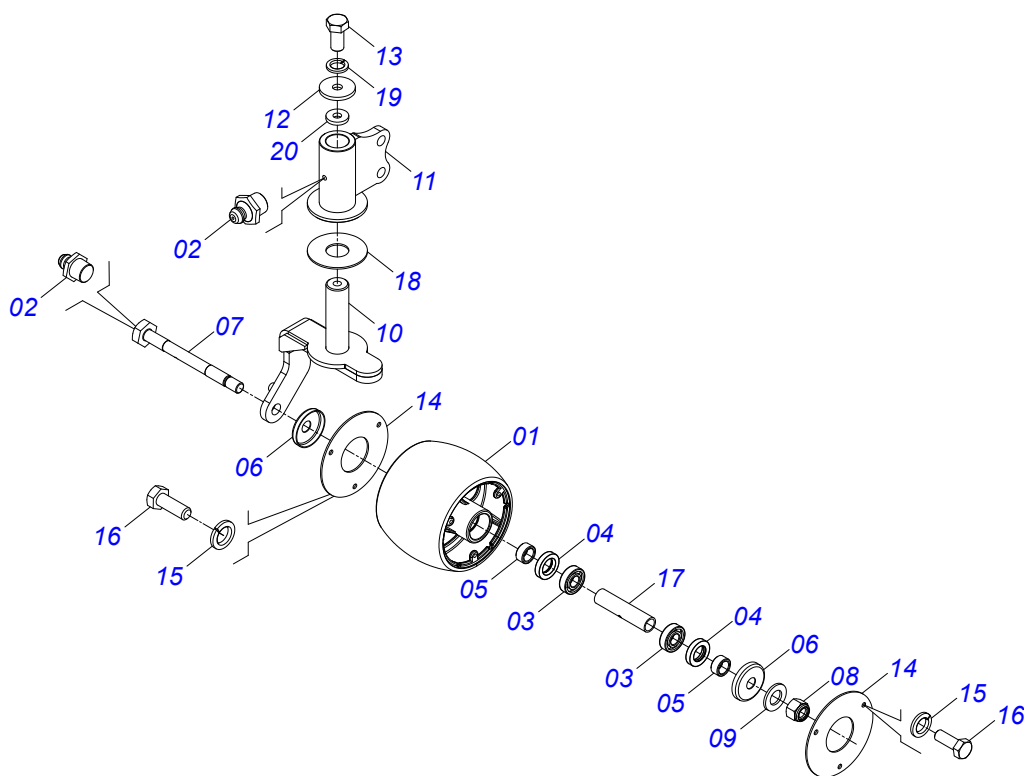
Item	Code	Description	See page	QT
01	0501010694	FLAT WASHER 8.50 X 18 X 1.50 ZN		01
02	0503010179	LOCK WASHER 5/16 ZN 1K01528		01
03	0503010337	NUT 5/16 UNC G.5 ZN		01
04	0503010363	BOLT 5/16 UNC X 1 C S G.2 ZN		01
05	0503060100	SUPPORT INSTRUCTION MANUAL		01
06	0503010267	NYLON CLAMP 3.60 X 1.3 X 155 MM		01



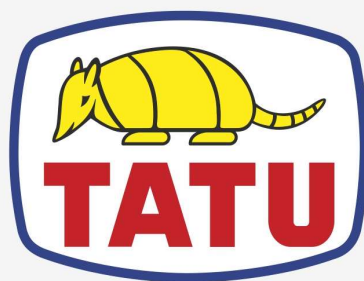
Item	Code	Description	See page	QT
01	0503034755	HANDLE PIN HITCH		01
02	0503031035	HITCH PIN CLIP		01
03	0503034756	CHAIN 3.00 X 16		01
04	0581018636	AXIS 27,80 X 155 X EC 130 FR 7,14		01



Item	Code	Description	See page	QT
01	0503034755	HANDLE PIN HITCH		01
02	0503031035	HITCH PIN CLIP		01
03	0503034756	CHAIN 3.00 X 16		01
04	0581018637	AXIS 25 X 155 X EC 130 FR 7,14		01



Item	Code	Description	See page	QT
01	0502013159	WHEEL		01
02	0503010002	GREASE FITTING 1800		02
03	0503010269	6204 BALL BEARING		02
04	0503010268	00262-B SEAL		02
05	0521010487	SPACER WASHER		02
06	0501417857	DUST CLOAK		02
07	0501414085	WHEEL AXLE		01
08	0503011075	3/4 UNC LOCK NUT		01
09	0501010941	FLAT WASHER		01
10	0531069058	WHEEL SUPPORT		01
11	0531069527	WHEEL SUPPORT		01
12	0511010721	FLAT WASHER		01
13	0503010962	5/8" X 1-1/4" BOLT		01
14	0501414089	WHEEL COVER		02
15	0503011444	SPRING WASHER 5/16"		06
16	0503010358	BOLT 5/16" X 5/8"		06
17	0501415297	SLEEVE		01
18	0511013239	FLAT WASHER		01
19	0503010027	SPRING WASHER 5/8"		01
20	0501415899	WASHER		01



MARCHESAN

Technical Publications | Elaboration and Revision

VINICIUS EDUARDO DA SILVA

www.marchesan.com.br

