

ROTARY CUTTERS

KAPINA MANI 3700

Code: 0501094066
Series: S-1024
Revision: 00
Revision Date: MARCH/2025

PARTS CATALOGUE



MARCHESAN



PRODUCTS

Code	Working Width	Description
0104120102		KAPINA MANI 3700 S-1024

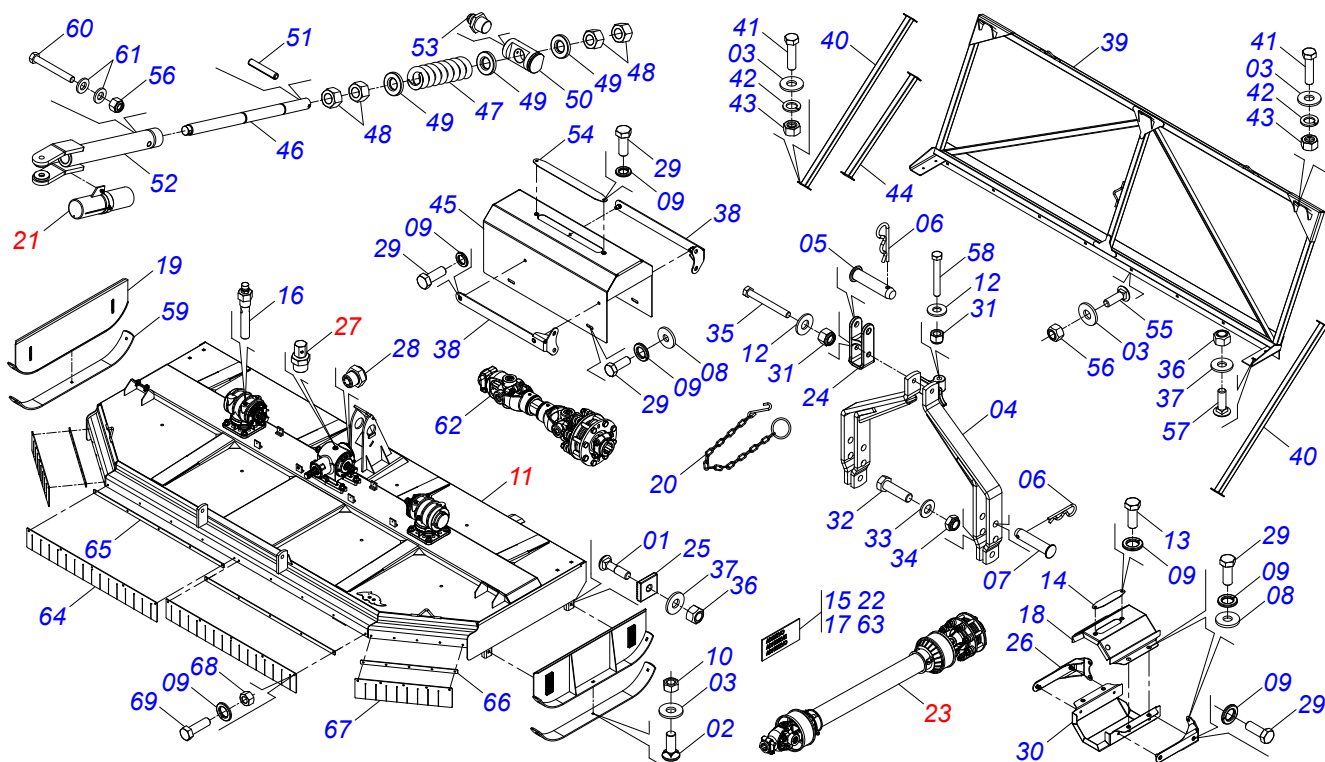
ATTENTION: IMPORTANT

Marchesan S.A. reserves the right to improve and/or modify the technical features of its products, without obligation to do the same with those products already sold and without prior knowledge of the dealer or the customer. The photos are only illustrative.



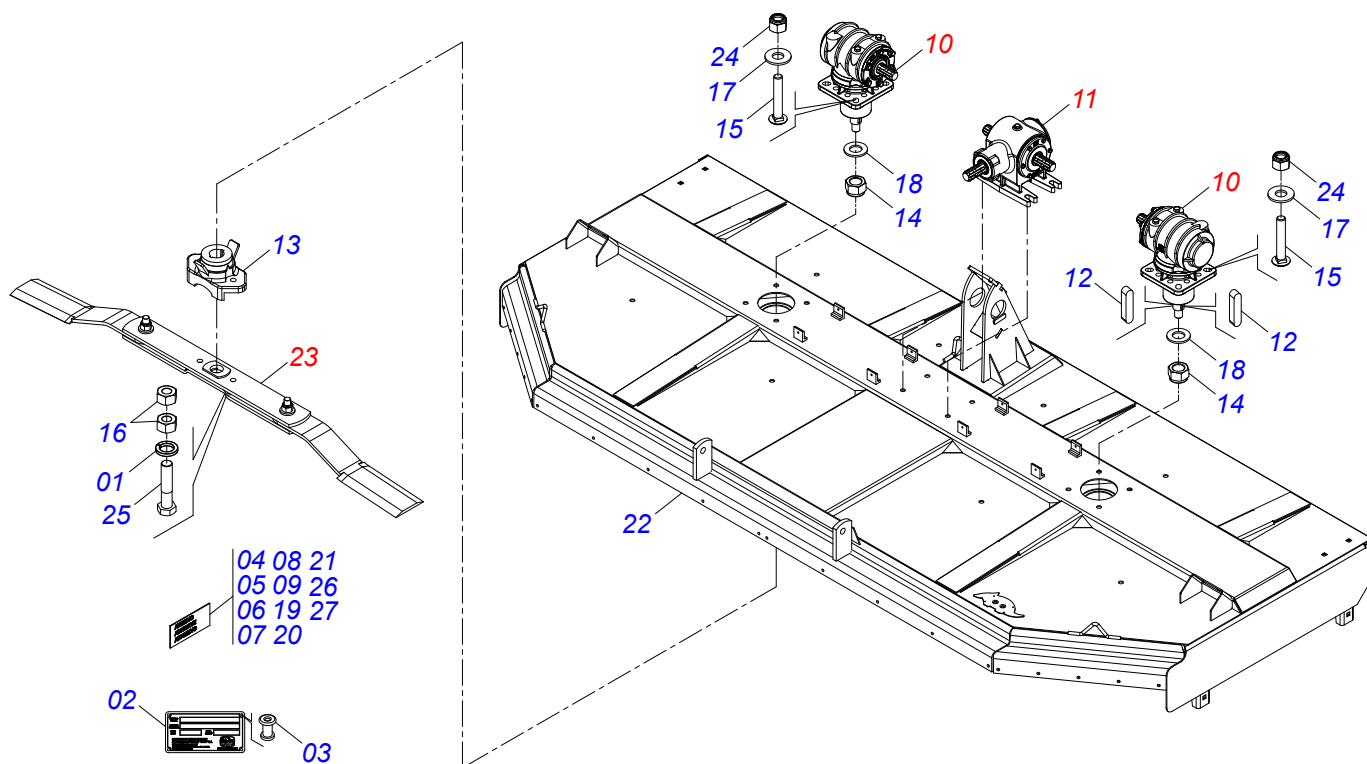
INDEX

0531046571	FRAME ASSY RC2 3700 MANIVA S-1024	1
0541056522	FRAME SEMI ASSEMBLED	2
0511042158	RH MULTIPLIER	3
0511041608	1.3/4 DOUBLE DISTRIBUTOR	4
0541056498	SUPPORT WITH ROTARY CUTTERS	5
0531046569	MANUAL ASSY SUPPORT KAPINA MANI	6
0511043450	DRIVE SHAFT	7
0501056010	FRICION CLUTCH	8
0511056241	3/8 BSPT BREATHER	9

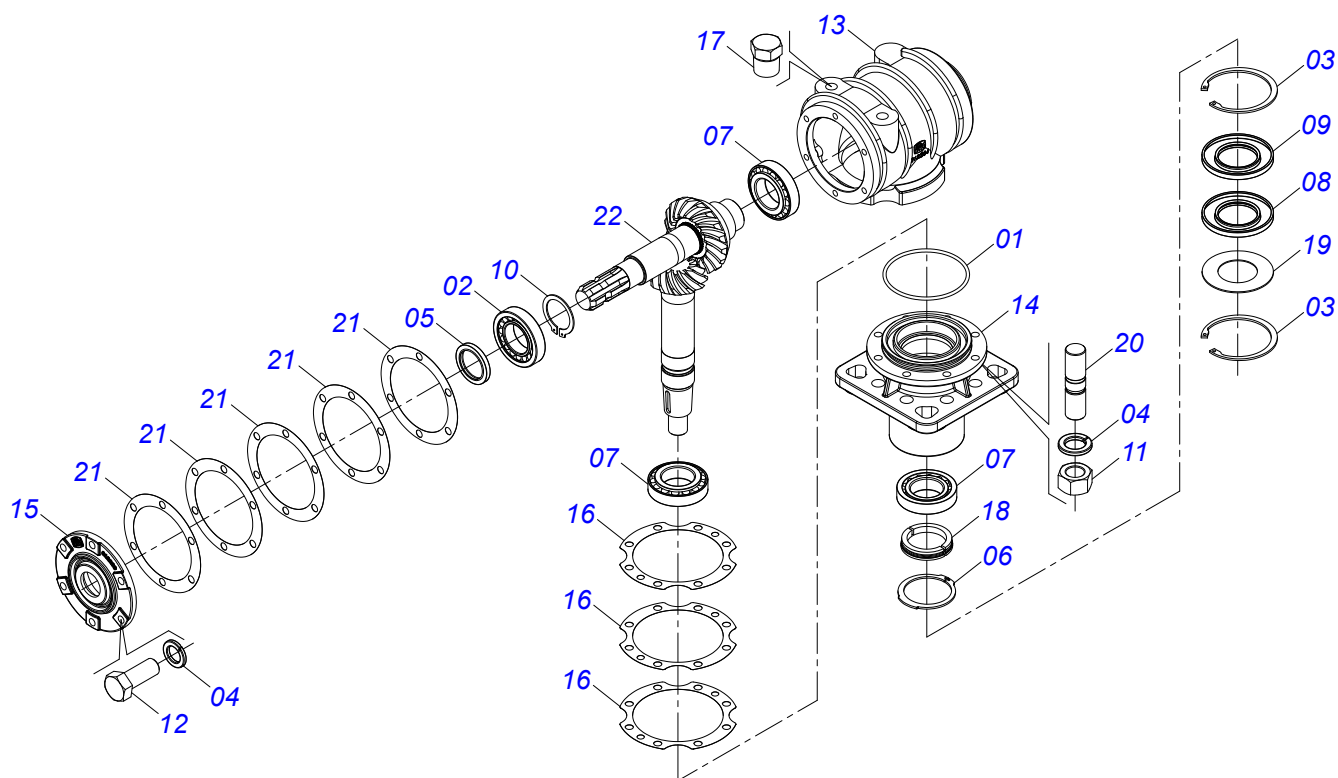


Item	Code	Description	See page	QT
01	0501014177	5/8" X 2-1/2" BOLT		04
02	0503012956	1/2" X 1-1/2" BOLT		06
03	0511017302	FLAT WASHER 13.50 X 32.50 X 3.0 ZN		26
04	0501066446	DRAWBAR		01
05	0521010578	COUPLING SHAFT		01
06	0503031035	HITCH PIN CLIP		03
07	0521010596	COUPLING SHAFT		02
08	0501010984	FLAT WASHER 10.50 X 27 X 3.00		16
09	0503010025	SPRING WASHER 3/8"		55
10	0503012682	1/2" BSW NUT		06
11	0541056522	FRAME SEMI ASSEMBLED	2	01
12	0501010322	FLAT WASHER 20.50 X 46 X 4.00 ZN		02
13	0503010256	3/8" X 3/4" BOLT		02
14	0581012546	LUBRICATION AXIS TRANSMISSION		01
15	0503034247	LUBRICATION POINT DECAL		03
16	0501110186	OIL SMALLER LEVEL INDICATOR		02
17	0503031127	RESPIRO DECAL		03
18	0501110998	CARDAN TOP PROTECTION COVER		01
19	0531069884	SKATE		02
20	0503011981	17.7" CHAIN WITH HOOK/LINK		01
21	0531046569	MANUAL ASSY SUPPORT KAPINA MANI	6	01
22	0503031087	AUTO CONTROL APPROVED DECAL		01
23	0511043450	DRIVE SHAFT	7	01
24	0502040922	DRAWBAR SUPPLEMENT		01
25	0502010083	SQUARE WASHER		04
26	0501110997	LARGER SUPPORT COVER PROTECTION		02
27	0511056241	3/8 BSPT BREATHER	9	01
28	0503035742	VISOR LEVEL TIP IS 3/8 BUST		01
29	0503010237	BOLT 3/8" X 1"		32
30	0501111144	BOTTOM PROTECTION COVER COUPLING WITH RIVET		01
31	0503011075	3/4 UNC LOCK NUT		02

Item	Code	Description	See page	QT
32	0501010171	BOLT 1 UNC X 3.1/2 C S G.5		02
33	0511015994	FLAT WASHER		02
34	0503014182	SELF-ADJUSTING NUT		02
35	0501011545	3/4" X 6-1/2" BOLT		01
36	0503012412	5/8" UNC SELF LOCKING NUT		08
37	0501012140	FLAT WASHER 16,50 X 40 X 4,00 ZN		08
38	0501111017	BODY SUPPORT COUPLING PROTECTION COVER		04
39	0531069888	REAR PROTECTION		01
40	0531069885	PROTECTION SUPPORT		02
41	0503010920	1/2 UNC X 1.1/2 C S G.5 ZN BOLT		12
42	0503010019	SPRING WASHER 1/2"		12
43	0503010060	HEX NUT 1/2 UNC G.5 ZN		12
44	0531069889	PROTECTION SUPPORT		01
45	0501111377	PROTECTION COVER CARDAN		02
46	0501417047	BAR SCREW		01
47	0503033826	1.90" X 3.60" X 11.80" X 0.90" SPRING		01
48	0501010333	1.3/4" NUT		04
49	0581014587	46 X 95 X 16,00 WASHER		03
50	0581014578	GUIDE		01
51	0503010361	SPRING PIN		01
52	0531069886	ADJUSTMENT BAR		01
53	0503010002	GREASE FITTING 1800		01
54	0501413827	TRANSMISSION SHAFT LUBRICATION DOOR		02
55	0503014734	BOLT		08
56	0503010589	SELF ADJUSTING NUT 1/2" UNC		09
57	0503012699	BOLT 5/8NC X 2 CAPQ G.5 ZN 1K20548		04
58	0513010547	3/4 UNC X 5.1/2 CS G.5 ZN SCREW		01
59	0501417073	SKATE GUIDE		02
60	0503010547	1/2" X 4" BOLT		01
61	0521014188	FLAT WASHER		02
62	0503064780	CARDAN		02
63	0503034078	LIFTING POINTS DECAL		03
64	0503037527	FRONT PROTECTION RUBBER BLANKET		02
65	0501419346	PROTECTION COVER FIXING BAR		02
66	0501419345	PROTECTION COVER FIXING BAR		02
67	0503037526	FRONT PROTECTION RUBBER BLANKET		02
68	0503010026	NUT 3/8"		21
69	0503012444	3/8" X 1-1/4" BOLT		20



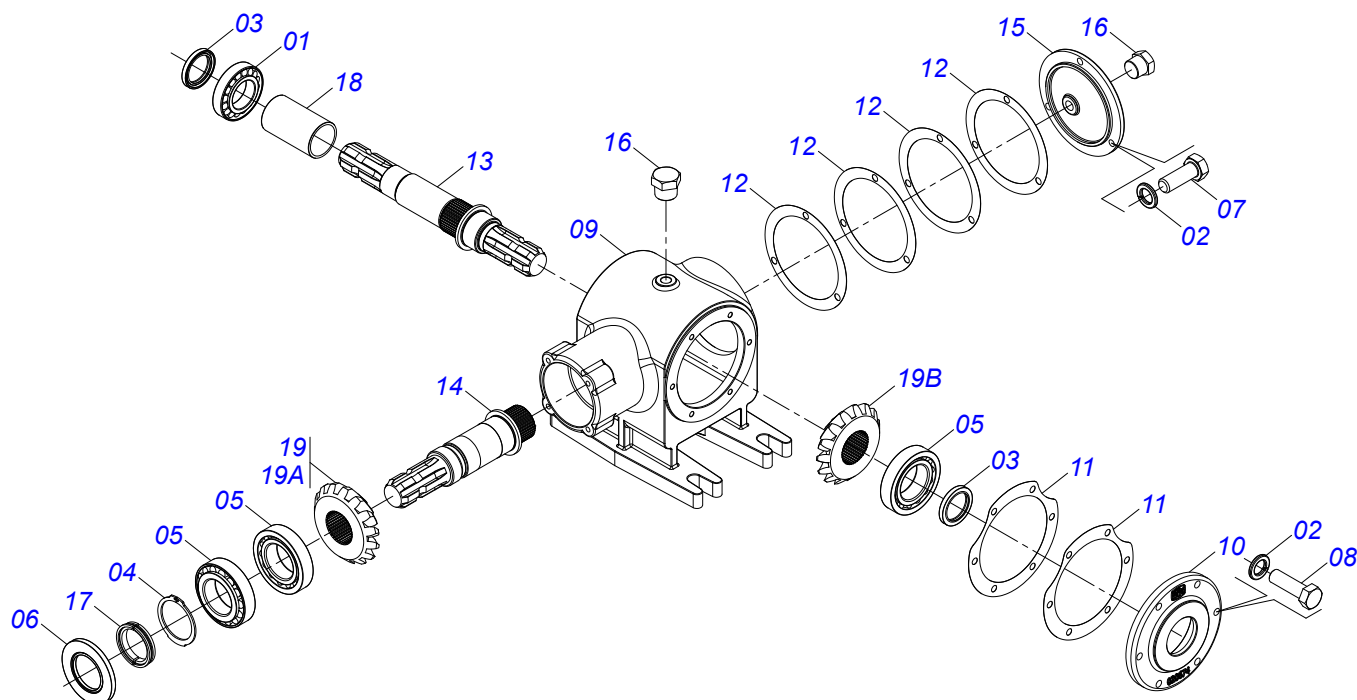
Item	Code	Description	See page	QT
01	0503011442	3/4" SPRING WASHER		04
02	0503034003	61 X 118 SERIAL NUMBER TAG		01
03	0503010001	RIVET 3,2 X 5,5		04
04	0503031930	DANGER ROTATING BLADES DECAL		01
05	0503031929	SPECIAL BLADES EQUIPMENT DECAL		01
06	0503031428	ATTENTION READ MANUAL DECAL		01
07	0503032949	ATTENTION 3 LANGUAGES DECAL		01
08	0503031427	ATTENTION POWER SPOT DECAL		01
09	0503034078	LIFTING POINTS DECAL		02
10	0511042158	RH MULTIPLIER	3	02
11	0511041608	1.3/4 DOUBLE DISTRIBUTOR	4	01
12	0501010536	KEYWAY SQUARE		04
13	0502012453	SUPPORT FLANGE		02
14	0503010817	1.1/4" SELF LOCKING NUT		02
15	0503017867	SCREW 3/4 UNC X 4.1/2 CAPQ G.7 ZN		12
16	0503010014	HEX NUT 3/4" ZN G.5 (HEAVY) UNC		08
17	0501010322	FLAT WASHER 20.50 X 46 X 4.00 ZN		12
18	0501017779	FLAT WASHER 32 X 60 X 4,75		02
19	0503032535	SIDE CARDAN DECAL		01
20	0503032534	IMPORTANT FRICTION ADJUSTMENT DECAL		01
21	0503031932	90 OIL RETIGHTEN LUBRICATION DECAL		01
22	0531069887	FRAME		01
23	0541056498	SUPPORT WITH ROTARY CUTTERS	5	02
24	0503011075	3/4 UNC LOCK NUT		12
25	0503010901	3/4UNC 3.1/2 BOLT		04
26	0503034333	TATU MARCHESAN LOGO DECAL		01
27	0503037372	KAPINA MANI DECAL		01



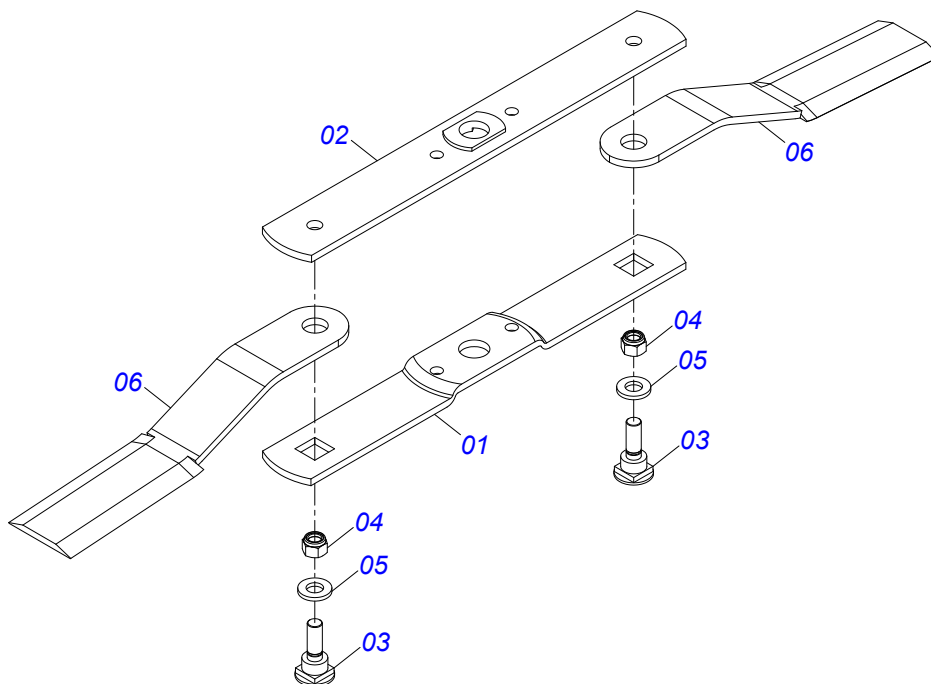
Item	Code	Description	See page	QT
01	0503010286	2-355 N 3006-9B O'RING		01
02	0503010750	30209 BALL BEARING		01
03	0503011420	502100 CLAMPING RING (FOR AXLE)		02
04	0503011440	SPRING WASHER		14
05	0503012103	5301 -BSEAL		01
06	0503012311	501065 RENO RING		01
07	0503012418	32211 ROLLER BEARING		03
08	0503013201	ARCA 6016 BRG SEAL		01
09	0503013211	6016 BRG SEAL		01
10	0503014772	501056 CLAMPING RING (FOR AXLE)		01
11	0503810028	NUT 1/2 NF SA		08
12	0503810395	SCREW 1/2 UNC X 1.1/4 CSRT G.5 SA		06
13	0502012204	RIGHT SPEED MULTIPLER BOX		01
14	0502012206	LOWER HUB		01
15	0502012203	RH COVER MULTIPLIER		01
16	0503030785	7.9" X 5.9" X 0.008" JOINT		03
17	0503031604	1/2" BSP PLUG		02
18	0531019302	LOCK RING		01
19	0531818823	FLAT WASHER 55.20 X99,80 X1,50 SA		01
20	0503830084	PRISONER 1/2 UNC X 1/2 UNF X 50 SA		08
21	0503030783	7.1" X 5.3" X 0.008" JOINT		05
22	0503061696	CROWN PINION SET 12Z 12Z AXLE RIGHT		01

1.3/4 DOUBLE DISTRIBUTOR

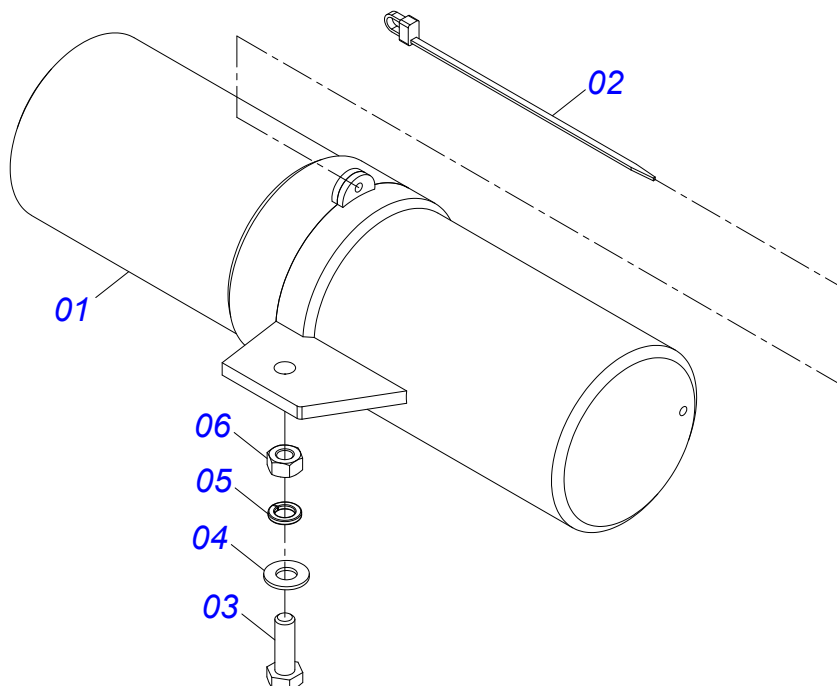
0511041608



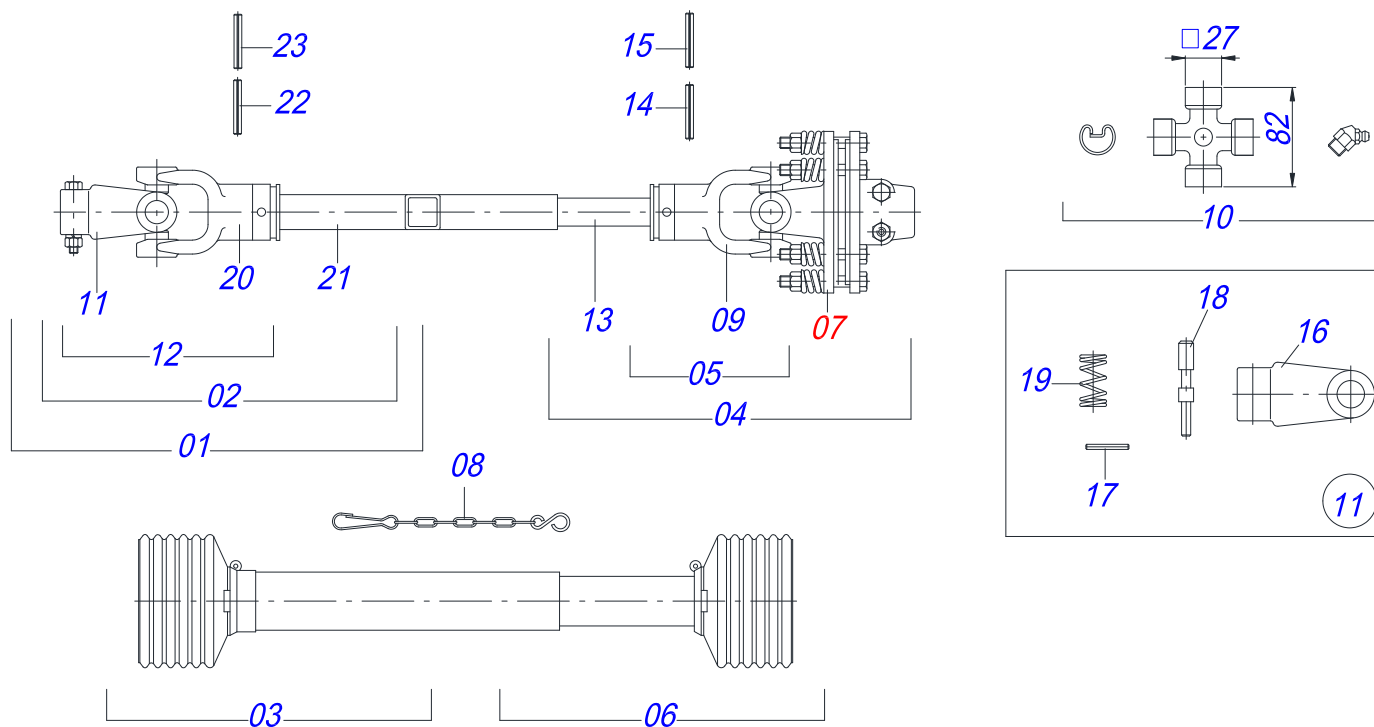
Item	Code	Description	See page	QT
01	0503010750	30209 BALL BEARING		01
02	0503011443	SPRING WASHER 3/8"		09
03	0503012103	5301 -BSEAL		02
04	0503012311	501065 RENO RING		01
05	0503012418	32211 ROLLER BEARING		03
06	0503013201	ARCA 6016 BRG SEAL		01
07	0503810237	3/8 UNC X 1 C S G.5 SA BOLT		03
08	0503810751	3/8 UNC X 1.1/4 C S G.5 - SCREW		06
09	0502012178	DOUBLE DISTRIBUTOR BOX		01
10	0502020674	DISTRIBUTOR DOUBLE COVER		01
11	0503030228	7.1" X 5.3" X 0.008" JOINT		02
12	0503030341	6.4" X 0.008" JOINT		04
13	0503033141	LARGER AXLE		01
14	0503033142	SMALLER AXLE EG-1935		01
15	0502020160	COVER WITH DOUBLE DISTRIBUTOR		01
16	0503010856	OIL PLUG R 3/8 BSPT		02
17	0531019302	LOCK RING		01
18	0551018078	SLEEVE FLANGE BALL BEARING		01
19	0503060607	GEAR ASSY FOR DOUBLE DISTRIBUTOR EG-1939		01
19A	0503033139	RIGHT 15Z CONICAL GEAR		01
19B	0503033140	15Z LEFT CONICAL GEAR		01



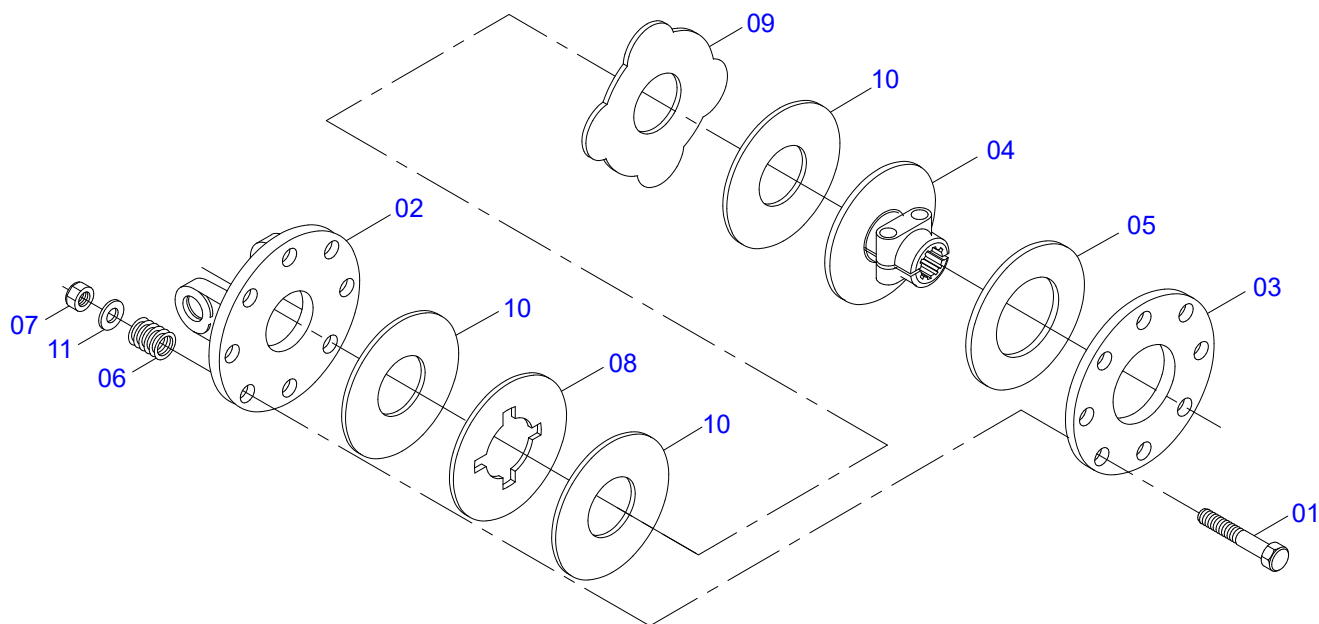
Item	Code	Description	See page	QT
01	0501417016	LOWER SUPPORT		01
02	0501417060	UPPER SUPPORT		01
03	0511019000	BOLT		02
04	0503010812	SELF LOCKING NUT 7/8" UNF		02
05	0501016545	FLAT WASHER		02
06	0622400051	24.5" X 3.94" X 0.5" ROTARY CUTTER		02



Item	Code	Description	See page	QT
01	0503060100	SUPPORT INSTRUCTION MANUAL		01
02	0503010267	NYLON CLAMP 3.60 X 1.3 X 155 MM		01
03	0503010363	BOLT 5/16 UNC X 1 C S G.2 ZN		01
04	0501010694	FLAT WASHER 8.50 X 18 X 1.50 ZN		01
05	0503010179	LOCK WASHER 5/16 ZN 1K01528		01
06	0503010337	NUT 5/16 UNC G.5 ZN		01



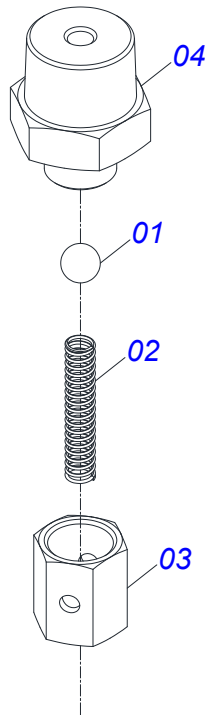
Item	Code	Description	See page	QT
01	0501056228	PROTECTION SLEEVE UNIVERSAL JOINT		01
02	0501056227	UNIVERSAL JOINT WITH SLEEVE		01
03	0503013619	PROTECTION FOR UNIV JOINT AND SLEEV		01
04	0501056229	UNIVERSAL JOINT WITH AXLE PROTECTION		01
05	0501056226	UNIVERSAL JOINT WITH SHAFT		01
06	0503013620	PROTECTION FOR UNIV JOINT AND AXLE		01
07	0501056010	FRICITION CLUTCH	8	01
08	0503012023	CHAIN FOR PROTECTION		02
09	0502010571	3-60 TERMINAL W/ SH 1.43"/1.43"		02
10	0503010837	CARDAN CROSSPIECE		01
11	0501056223	TERMINAL 1-60 C/CANAL CC50		01
12	0501056225	UNIVERSAL JOINT		01
13	0541016743	36,51 X 800 SQUARE SHAFT		01
14	0503011069	SPRING PIN 0.4" X 2.8"		01
15	0503011805	0.2" X 2.8" SPRING PIN		01
16	0502011421	1-60 TERMINAL		01
17	0503010838	SPRING PIN 0.1" X 0.8"		01
18	0521010638	HITCH PIN 13.70 X 78		01
19	0503030518	COMPRESSION SPRING 0.5"X1.0"X 0.1"		01
20	0502010570	2-60 TERMINAL W/ SH 1.8"/1.8"		01
21	0541016742	45,3 X Q37,2 SQUARE SLEEVE		01
22	0503010843	0.4" X 3.3" SPRING PIN		01
23	0503011878	0.2" X 3.3" SPRING PIN		01



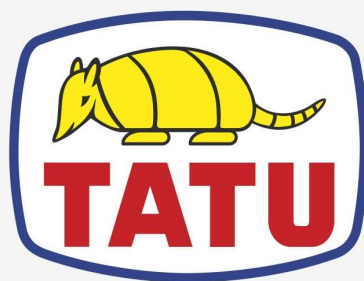
Item	Code	Description	See page	QT
01	0503013564	FRICION BOLT		08
02	0503013554	FLANGE		01
03	0503013557	COUPLING DISC		01
04	0503013556	CENTRAL CORE		01
05	0503013555	FRICION DISC		01
06	0503013558	FRICION SPRING		08
07	0503013559	FRICION NUT		08
08	0503013561	NOTCHED DISC		01
09	0503013560	INTERMEDIATE DISC		01
10	0503013562	FRICION DISC		03
11	0503013563	FRICION WASHER		08

3/8 BSPT BREATHER

0511056241



Item	Code	Description	See page	QT
01	0503015121	6 MM BALL		01
02	0503030051	0.2" X 1" X 0.1" COMPRESSION SPRING		01
03	0561016896	BREATHER LID		01
04	0571017245	3/8 BSPT PLUG WITH 1/4 BREATHER		01



MARCHESAN

Technical Publications | Elaboration and Revision

VINICIUS EDUARDO DA SILVA

www.marchesan.com.br

