

HINGE TYPE OFFSET DISK HARROW

GNPT 36/40/44/48/52/54D - MECHANICAL
GNPT 36/40/44/48/52/54D - MECÂNICA

Code: 0501093895
Series: S-0224
Revision: 00
Revision Date: AUGUST/2024

PARTS CATALOGUE



MARCHESAN



PRODUCTS

Code	Working Width	Description
0102500005		GNPT 36X22X4,5 DR DMO MEC E 1.1/2 S-0224
0102500002		GNPT 36X22X4,5 MT DMO MEC E 1.1/2 S-0224
0102500006		GNPT 40X22X4,5 DR DMO MEC E 1.1/2 S-0224
0102500008		GNPT 40X22X4,5 MT DMO MEC E 1.1/2 S-0224
0102500015		GNPT 44X22X4,5 DR DMO MEC E 1.1/2 S-0224
0102500016		GNPT 44X22X4,5 MT DMO MEC E 1.1/2 S-0224
0102500040		GNPT 48X22X4,5 DR DMO MEC E 1.1/2 S-0224
0102500039		GNPT 48X22X4,5 MT DMO MEC E 1.1/2 S-0224
0102500043		GNPT 52X22X4,5 DR DMO MEC E 1.1/2 S-0224
0102500044		GNPT 52X22X4,5 MT DMO MEC E 1.1/2 S-0224
0102500048		GNPT 54X22X4,5 DR DMO MEC E 1.1/2 S-0224

ATTENTION: IMPORTANT

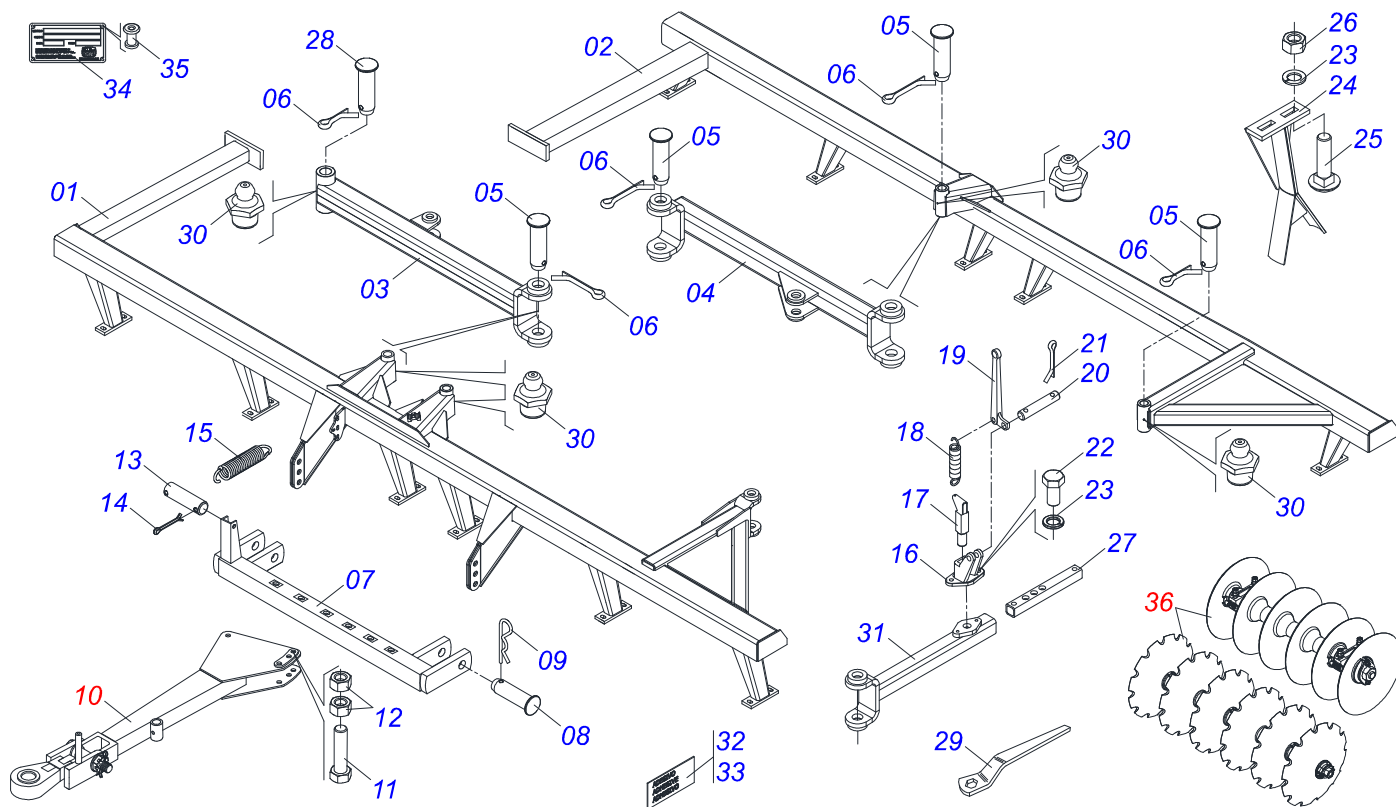
Marchesan S.A. reserves the right to improve and/or modify the technical features of its products, without obligation to do the same with those products already sold and without prior knowledge of the dealer or the customer. The photos are only illustrative.



MARCHESAN

INDEX

0909097342	ASSY FRAME - 36/40/44/48/52/54D	1
0511050413	DRAYBAR	2
0909097343	GANG DISC - 36/40/44/48/52/54D	3
0531042480	196 X 1.1/2 DMO AGRICULTURAL BEARING WITH PROTECTION SUPPORT	4
0531055221	196 X 1.1/2 IMP DMO AGRICULTURAL BEARING	5



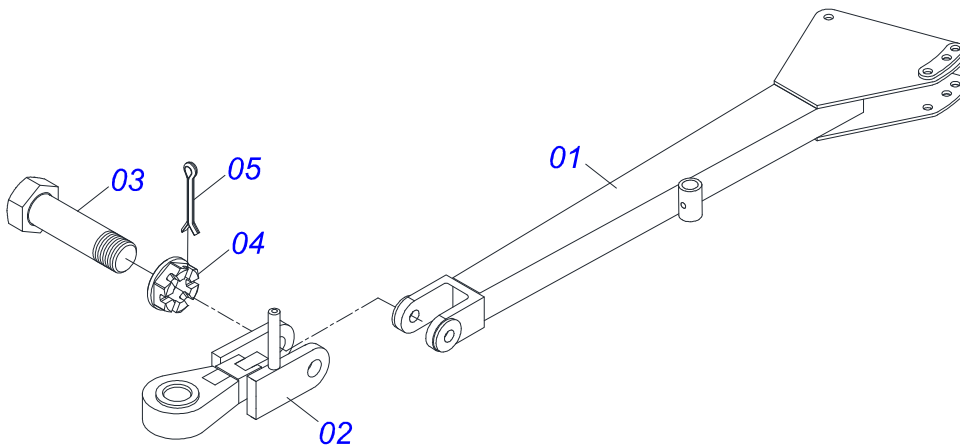
Item	Code	Description	See page	36	40	44	48	52	54
01	0521064785	FRONT FRAME - 36		01	00	00	00	00	00
01.	0521064786	FRONT FRAME - 40		00	01	00	00	00	00
01..	0521064787	FRONT FRAME - 44		00	00	01	00	00	00
01...	0521064660	FRONT FRAME - 48		00	00	00	01	00	00
01....	0521064788	FRONT FRAME - 52		00	00	00	00	01	00
01.....	0521064639	FRONT FRAME - 54		00	00	00	00	00	01
02	0511061863	REAR FRAME - 36		01	00	00	00	00	00
02.	0511060641	REAR FRAME - 40		00	01	00	00	00	00
02..	0521061280	REAR FRAME - 44		00	00	01	00	00	00
02...	0521061286	REAR FRAME - 48		00	00	00	01	00	00
02....	0521061284	REAR FRAME - 52		00	00	00	00	01	00
02.....	0521061282	REAR FRAME - 54		00	00	00	00	00	01
03	0511060637	ARM FRONT		01	01	00	00	00	00
03.	0521061058	ARM FRONT		00	00	01	01	01	01
04	0511060636	REAR ARM		01	01	00	00	00	00
04.	0521061059	REAR ARM		00	00	01	01	01	01
05	0511060177	PIN		05	05	05	05	05	05
06	0503010010	1/4" X 2.1/2" SPLIT PIN		06	06	06	06	06	06
07	0511060640	DRAWBAR ASSY		01	01	01	01	01	01
08	0521014519	PIN WITH HEAD PN-009		02	02	02	02	02	02
09	0503031470	TM 251 X 4,0 STAPLE		02	02	02	02	02	02
10	0511050413	DRAYBAR	2	01	01	01	01	01	01
11	0503013185	BOLT 3/4" UNC X 5.1/2 C S G.7 ZN		02	02	02	02	02	02
12	0503012183	SNC 3/4" ZIN 1K03097 NUT		04	04	04	04	04	04
13	0521013816	PIN SEM HEAD PN-052		01	01	01	01	01	01
14	0503010362	1/8" X 1.1/4" SPLIT PIN		02	02	02	02	02	02
15	0503031542	SPRING		01	01	00	00	00	00
15.	0503031498	SPRING		00	00	01	01	01	01
16	0502011828	GUIDE		01	01	01	01	01	01
17	0511061027	PIN LOCK		01	01	01	01	01	01
18	0503031545	SPRING		02	02	02	02	02	02
19	0502011826	ARM		01	01	01	01	01	01



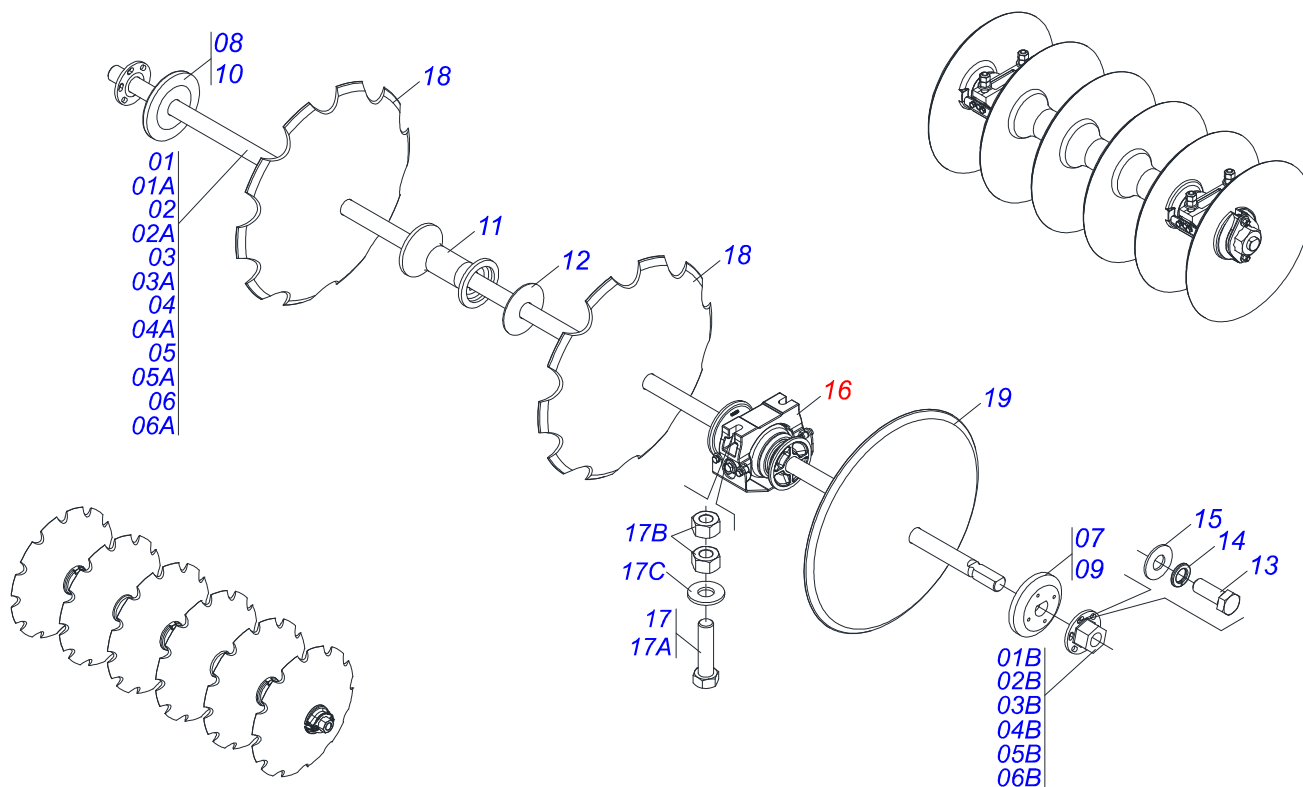
ASSY FRAME - 36/40/44/48/52/54D

0909097342

Item	Code	Description	See page	36	40	44	48	52	54
20	0521013816	PIN SEM HEAD PN-052		02	02	02	02	02	02
21	0503010362	1/8" X 1.1/4" SPLIT PIN		04	04	04	04	04	04
22	0501010155	1/2" X 1" BOLT		02	02	02	02	02	02
23	0503010019	1/2" SPRING WASHER		48	56	64	72	80	88
24	0511060204	CLEANER		28	28	32	36	40	44
25	0503019588	BOLT		44	40	60	68	76	84
26	0503010020	1/2"NUT		44	40	60	68	76	84
27	0521018183	PROLONG		01	01	00	00	00	00
27.	0561015085	EXTENSION		00	00	01	01	01	01
28	0521015434	PIN		01	01	01	01	01	01
29	0501011432	1-1/2" AND 1-5/8 GANG BOLT WRENCH		02	02	02	02	02	02
30	0503010002	1800 GREASE FITTING		09	09	09	09	09	09
31	0511061028	ADJUSTMENT BAR		01	01	00	00	00	00
31.	0521061278	ADJUSTMENT BAR		00	00	01	01	01	01
32	0503031428	ATTENTION READ MANUAL DECAL		01	01	01	01	01	01
32.	0503031738	WARNING DECAL		01	01	01	01	01	01
32..	0503033038	DANGER DECAL		01	01	01	01	01	01
33	0503031087	AUTO CONTROL APPROVED DECAL		01	01	01	01	01	01
33.	0503033954	ADHESIVE LABEL		01	01	01	01	01	01
33..	0503033955	ADHESIVE LABEL		01	01	01	01	01	01
33...	0503034438	ADHESIVE LABEL		01	01	01	01	01	01
34	0503034003	61 X 118 SERIAL NUMBER TAG		01	01	01	01	01	01
35	0503010001	RIVET 3,2 X 5,5		04	04	04	04	04	04
36		GANG DISC - 36/40/44/48/52/54D	3						



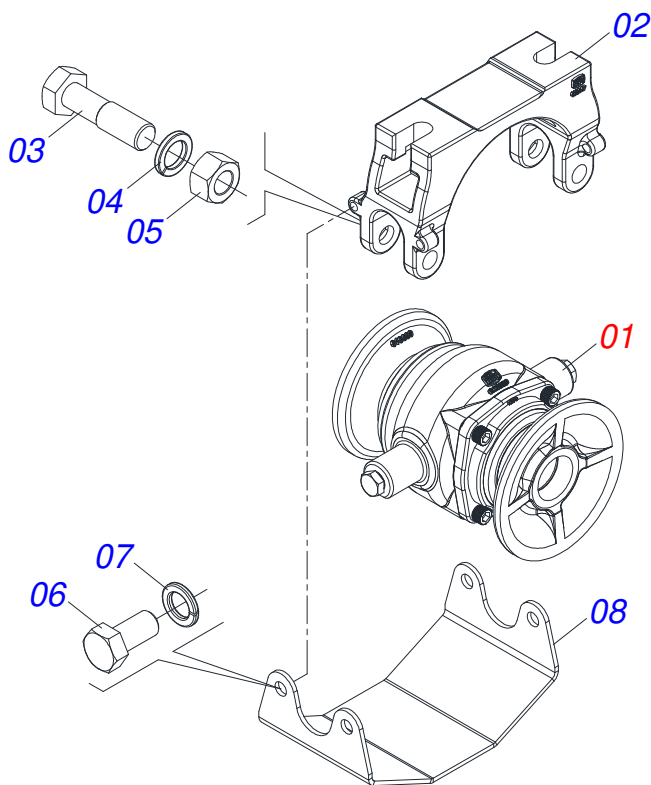
Item	Code	Description	See page	QT
01	0511060638	AXLE ASSY		01
02	0511060639	HOOK HITCH		01
03	0521014427	BOLT BORED		01
04	0503016586	CASTLE NUT		01
05	0503010067	3/16" X 2.1/2" SPLIT PIN		01



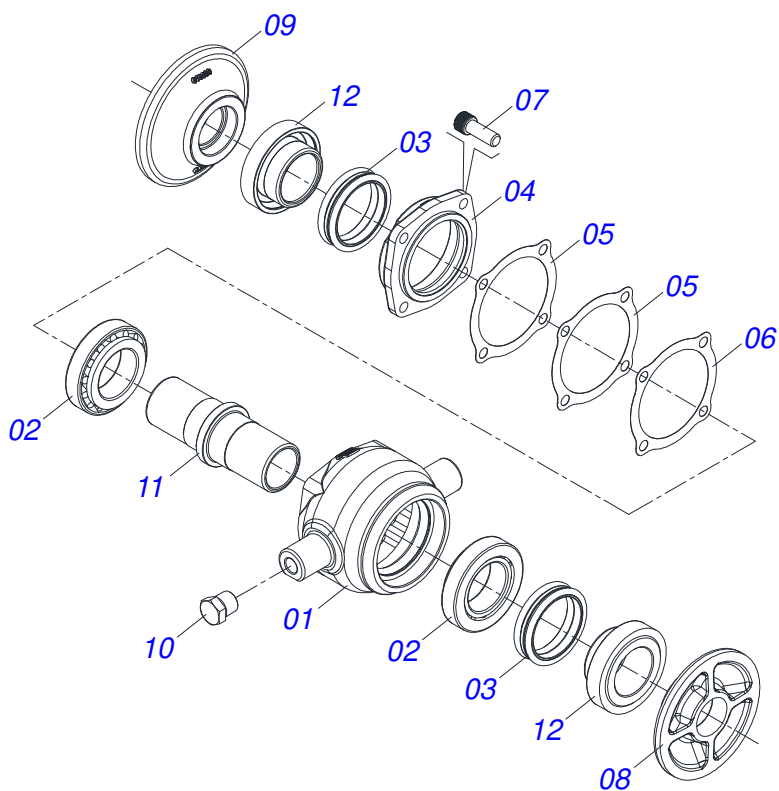
Item	Code	Description	See page	36	40	44	48	52	54
01	0511051175	AXLE DISC WITH NUTS		04	00	00	00	00	00
01A	0511060780	AXLE DISC		01	00	00	00	00	00
01B	0502011593	7" AXLE NUT		01	00	00	00	00	00
02	0511050313	AXLE DISC WITH NUTS		00	04	00	00	00	00
02A	0511060781	AXLE DISC		00	01	00	00	00	00
02B	0502011593	7" AXLE NUT		00	01	00	00	00	00
03	0511050184	AXLE DISC WITH NUTS		00	00	04	00	00	00
03A	0511060806	AXLE DISC		00	00	01	00	00	00
03B	0502011593	7" AXLE NUT		00	00	01	00	00	00
04	0511050329	AXLE DISC WITH NUTS		00	00	00	04	00	00
04A	0511060786	AXLE DISC		00	00	00	01	00	00
04B	0502011593	7" AXLE NUT		00	00	00	01	00	00
05	0511050778	AXLE DISC WITH NUTS		00	00	00	00	04	02
05A	0511060805	AXLE DISC		00	00	00	00	01	01
05B	0502011593	7" AXLE NUT		00	00	00	00	01	01
06	0511050305	AXLE DISC WITH NUTS		00	00	00	00	00	02
06A	0511060807	AXLE DISC		00	00	00	00	00	01
06B	0502011593	7" AXLE NUT		00	00	00	00	00	01
07	0502011609	OUTER FLANGE		02	02	02	02	02	02
08	0502011608	INNER FLANGE		02	02	02	02	02	02
09	0502011607	OUTER FLANGE		02	02	02	02	02	02
10	0502011606	INNER FLANGE		02	02	02	02	02	02
11	0502011594	SPACER		24	24	28	32	36	38
12	0521013879	GNC 57900 CHOCK		08	08	12	12	12	12
13	0503010237	3/8" X 1" BOLT		08	08	08	08	08	08
14	0503010025	3/8" SPRING WASHER		08	08	08	08	08	08
15	0501013518	FLAT WASHER 10,50 X 24 X 1,50 ZN		08	08	08	08	08	08
16	0531042480	196 X 1.1/2 DMO AGRICULTURAL BEARING WITH 4 PROTECTION SUPPORT		08	12	12	12	12	12
17	0521048902	SCREW ASSEMBLY 5/8 UNC 3		16	24	24	24	24	24
17A	0501011541	5/8 UNC X 3 CS G.5 ZN1K28066 BOLT		01	01	01	01	01	01
17B	0503010013	5/8 UNC G.5 ZN HEX NUT		02	02	02	02	02	02



Item	Code	Description	See page	36	40	44	48	52	54
17C	0501012140	FLAT WASHER 16,50 X 40 X 4,00 ZN		01	01	01	01	01	01
18	0602029409	DR 22 X 4,50 C74AF02FR1.9/16 10R		36	40	44	48	52	54
19	0601029406	DL 22 X 4,50 C74AF02FR1.9/16		36	40	44	48	52	54



Item	Code	Description	See page	QT
01	0531055221	196 X 1.1/2 IMP DMO AGRICULTURAL BEARING	5	01
02	0502013047	BEARING SUPPORT		01
03	0501011541	5/8 UNC X 3 CS G.5 ZN1K28066 BOLT		02
04	0503010027	5/8 SPRING WASHER		02
05	0503010013	5/8 UNC G.5 ZN HEX NUT		02
06	0503011334	3/8 UNC X 3/4 CS G.5 ZN BOLT		04
07	0503010025	3/8" SPRING WASHER		04
08	0581014143	SWIVEL OIL BATH BEARING WEAR PLATE		01



Item	Code	Description	See page	QT
01	0502012839	BEARING HOUSING 182/192,5		01
02	0503010006	32210 ROLLER BEARING		02
03	0503030026	SEAL LP JB-253		02
04	0502020424	HOUSING CAP 182/192,225		01
05	0503030013	4.4" X 3.5" X 0.004" JOINT		02
06	0503030684	4.4" X 3.5" X 0.004" JOINT		01
07	0503010134	3/8" X 1" BOLT		04
08	0501216951	INNER FLANGE		01
09	0501216952	OUTER FLANGE		01
10	0503010856	OIL PLUG R 3/8 BSPT		02
11	0502040061	182/192,5 AXLE		01
12	0502010541	SEAL HOLDER		02



MARCHESAN

Technical Publications | Elaboration and Revision

LUIZ CANDIDO

www.marchesan.com.br

