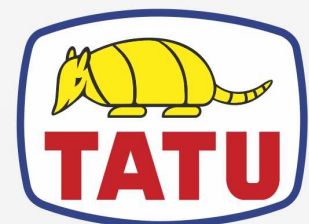


CHASER BIN

DCA2 5500 MC WITH HYDRAULIC DRIVE

Code: 0501093164
Series: S-0114
Revision: 01
Date Revision: FEVEREIRO/2023

PARTS CATALOGUE



MARCHESAN



PRODUCTS

Code	Description
0109090200	DCA2 5500 MC C/ACION PN11L15 S-0114
0109090199	DCA2 5500 MC C/ACIONAM HIDR S-0114

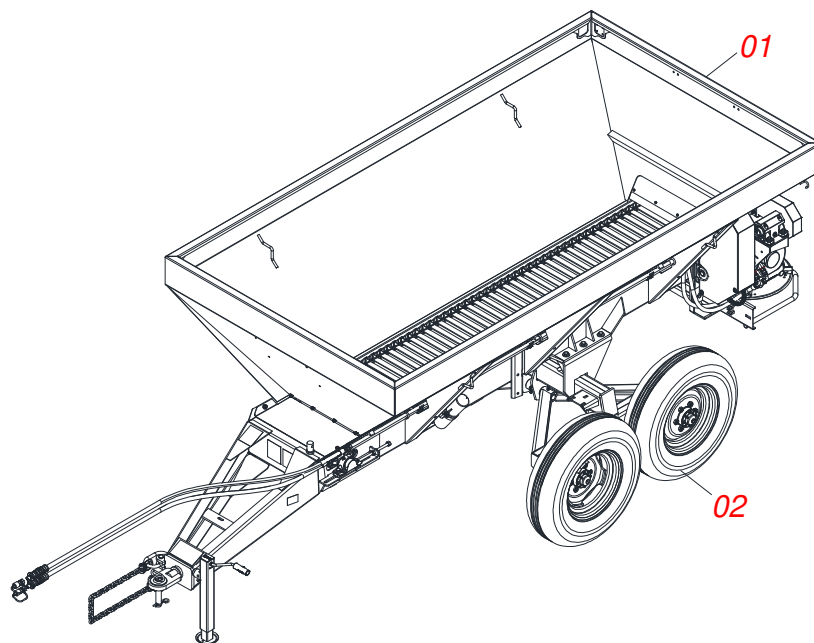
ATTENTION: IMPORTANT

Marchesan S.A. reserves the right to improve and/or modify the technical features of its products, without obligation to do the same with those products already sold and without prior knowledge of the dealer or the customer. The photos are only illustrative.



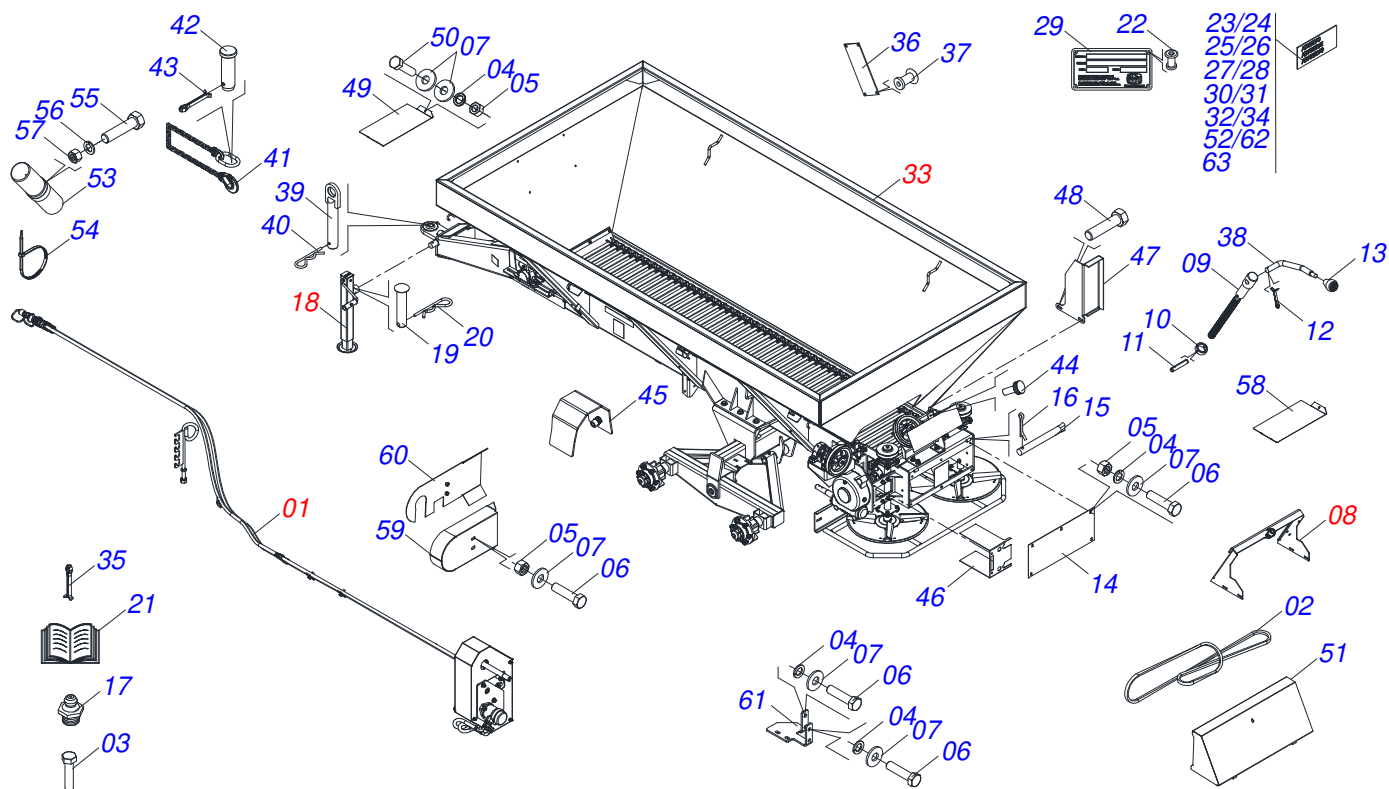
INDEX

0909096085	ASSY FRAME	1
0521045264	ASSY FRAME	2
0511054744	HYDRAULIC DRIVE ASSY	4
0511053588	MOTOR HYDRAULIC OMP 80 WITH NIPPLE 7/8 NIPPE 7/8	5
0511054496	TENSIONER SMALEER ASSY	6
0511054497	TENSIONER LARGER ASSY	7
0501053834	MALE QUICK COUPLER	8
0511055834	SUPPORT SLUICE VALVE ASSY	9
0501054846	SLUICE VALVE SUPPORT	10
0511059094	SHAFT BEARING THREADED	11
0503062157	DRAWBAR JACK	12
0511056788	FRAME WITH BUCKET	13
0501054847	SLUICE VALVE COVER ASSY	14
0501047985	REDUCER	15
0501051774	38Z CROWN	16
0501046802	BELT TENSIONER ASSY	17
0501051782	RIGHT BEARING SUPPORT DISC	18
0501051783	LEFT BEARING SUPPORT DISC	19
0501048000	AGRICULTURAL BEARING	20
0511041213	AGRICULTURAL BEARING	21
0521045251	CARRYING-WHEEL FIXATION SUPP ASSY	22
0501047998	BELL CRANK FIXATION SUPPORT ASSY	23
0501051142	CARRYING WHEEL HUB	24
0501044308	AGRICULTURAL BEARING ASSY	25
0501051972	DISTRIBUTOR RIGHT DISC ASSY	26
0501051973	DISTRIBUTOR LEFT DISC ASSY	27
0531050244	PROTECTOR DISC	28
0503060206	29.5"X0.6"- 10L WHEEL AND TIRE ASSY	29
0503060181	WHEEL AND TIRE	30



Item	Code	Description	See page	QT
01	0521045264	ASSY FRAME	2	01
02	0503060206	29.5"X0.6"- 10L WHEEL AND TIRE ASSY	29	01
02.	0503060181	WHEEL AND TIRE	30	01

ASSY FRAME



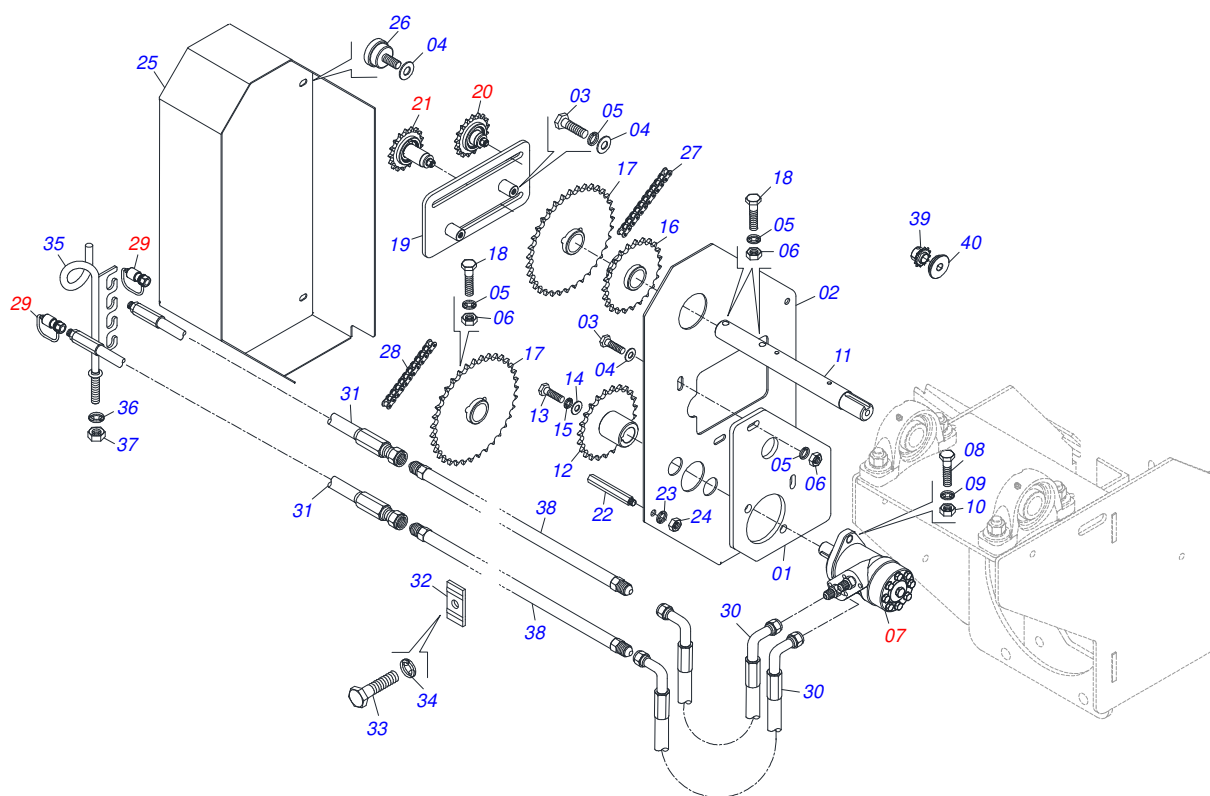
Item	Code	Description	See page	QT
01	0511054744	HYDRAULIC DRIVE ASSY	4	01
02	0503010154	C-128 BELT		01
03	0503010751	C3/8" X 1.1/4" HEX BOLT G.5		02
04	0503010025	3/8 SPRING WASHER		16
05	0503010026	3/8" NUT		13
06	0503010237	3/8" X 1" BOLT		12
07	0501010984	10,50 X 27 X 3,00 FLAT WASHER		19
08	0511055834	SUPPORT SLUICE VALVE ASSY	9	01
09	0561014861	REGULATOR		01
10	0511013015	SLEEVE		01
11	0503010561	SPRING PIN		01
12	0503010257	1/8" X 1" COTTERPIN		01
13	0503030878	LEVER CRANK		01
14	0501019460	REAR PROTECTION		01
15	0501017574	0.3" X 2.7" AXLE		02
16	0503010140	1/8" X 3/4" COTTERPIN		02
17	0503011098	1/4" GREASE FITTING		04
18	0503062157	DRAWBAR JACK	12	01
19	0521010549	COUPLING SHAFT		01
20	0503030168	HITCH PIN CLIP		01
21	0501032417	BAG WITH INSTRUCTION MANUAL/CATALOG		01
22	0503010001	3.2 X 5.5 RIVET		08
23	0503060809	ASSY LABEL ADHESIVE		01
24	0503031818	ADHESIVE LABEL		01
25	0503031809	ADHESIVE LABEL		01
26	0503031859	ADHESIVE LABEL DANGER		02
27	0503031827	LUBRICATE AND RETIGHTEN DAILY DECAL		01
28	0503031087	ADHESIVE LABEL		01
29	0503034003	SERIAL NUMBER TAG 61 X 118		01
30	0503032949	ADHESIVE LABEL		01
31	0503031428	READ MANUAL DECAL		01



ASSY FRAME

0521045264

Item	Code	Description	See page	QT
32	0503032425	ADHESIVE LABEL ATTENTION		01
33	0511056788	FRAME WITH BUCKET	13	01
34	0503031427	ADHESIVE LABEL		01
35	0503010534	3/8 X 2-1/2 COTTERPIN		01
36	0503030751	REGULATOR PLATE		01
37	0503012209	RIVET POP		04
38	0521011107	CRANK BODY		01
39	0501068989	COUPLING SHAFT		01
40	0503031035	HITCH PIN CLIP		01
41	0503013150	1300 X 3/8 CHAIN		01
42	0581011220	COUPLING SHAFT		01
43	0503010131	3/16" X 1-1/2" COTTERPIN		01
44	0503010386	CABLE		01
45	0521068819	PULLEY AXLE PROTECTION		01
46	0581017497	COUPLING PROTECTION		01
47	0581017492	SIDE PROTECTION BELT		01
48	0503010849	3/8" X 1-1/2" BOLT		04
49	0581013216	FRONT PROTECTION		01
50	0503010849	3/8" X 1-1/2" BOLT		04
51	0501069840	REAR COVER PROTECTION		01
52	0503034648	ADHESIVE LABEL		01
53	0503060100	INSTRUCTIONS MANUAL CANISTER		01
54	0503010267	NYLON CLAMP		01
55	0503010363	BOLT 5/16 UNC X 1 C S G.2 ZN		01
56	0503010179	LOCK WASHER 5/16 ZN 1K01528		01
57	0503010337	5/16" NUT		01
58	0581017448	FRONT PROTECTION		01
59	0581017500	REAR LATERAL PROTECTION BELT		01
60	0521068820	REAR LATERAL PROTECTION BELT		01
61	0521068821	SUPPORT BELT PROTECTION		01
62	0503035157	ADHESIVE LABEL DISTRIBUTOR LIMESTONE		01
63	0503036144	MAXIMUM SPEED ADHESIVE LABEL		01



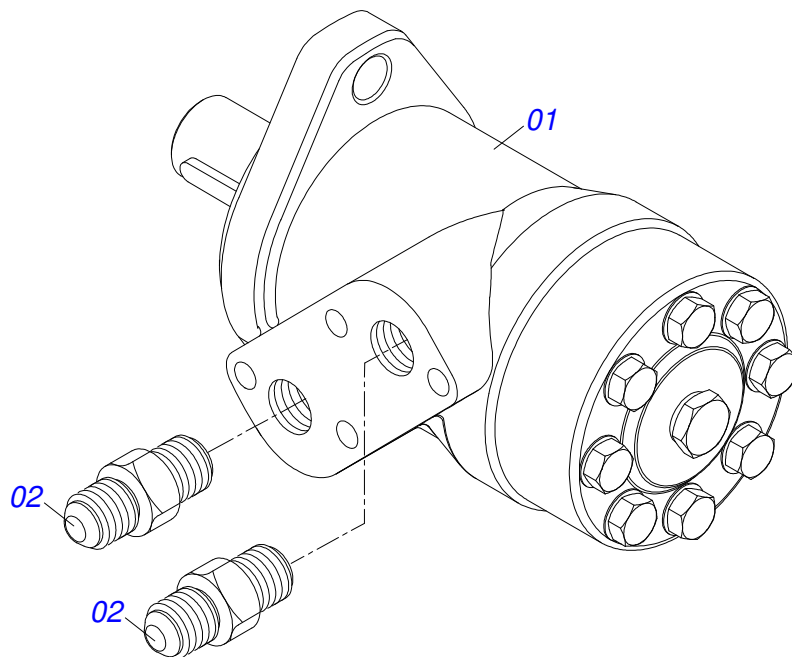
Item	Code	Description	See page	QT
01	0571015182	HIDRAULIC MOTOR SUPPORT		01
02	0571015447	PROTECTION REAR		01
03	0503810849	3/8 UNC X 1.1/2 C S G.5 SA BOLT		04
04	0501010984	10,50 X 27 X 3,00 FLAT WASHER		07
05	0503011443	3/8" SPRING WASHER		05
06	0503010026	3/8" NUT		06
07	0511053588	MOTOR HYDRAULIC OMP 80 WITH NIPPLE 7/8 5 NIPPE 7/8		01
08	0503010920	1/2 UNC X 1.1/2 C S G.5 ZN BOLT		02
09	0503011440	SPRING WASHER		02
10	0503010060	1/2 UNC G.5 ZN HEX NUT		02
11	0571015448	DRIVE AXLE		01
12	0521064566	GEAR HIDRAULIC MOTOR		01
13	0503011257	M 8 X 1,25 X 30 BOLT		01
14	0501810694	FLAT WASHER		01
15	0503011444	SPRING WASHER		01
16	0521063041	GEAR 23Z		01
17	0501069020	35Z GEAR		02
18	0503811141	SCREW		04
19	0521064691	SUPPORT TENSIONER		01
20	0511054496	TENSIONER SMALEER ASSY	6	01
21	0511054497	TENSIONER LARGER ASSY	7	01
22	0571015189	PRISONER 3/8"		03
23	0503010025	3/8 SPRING WASHER		03
24	0503010026	3/8" NUT		03
25	0571015450	CHAIN CAP		01
26	0503010386	CABLE		03
27	0503013061	50-1 CHAIN X 64 LINK + REDUCTION		01
28	0503013003	50-1 CHAIN X 79 LINK + REDUCTION + MENDING		01
29	0501053834	MALE QUICK COUPLER	8	02
30	0521055709	HOSE 1/2 X 2600 TR-TM YELLOW/BLUE		02
31	0521055710	HOSE 1/2 X 2600 TR-TMYELLOW / BLUE		02



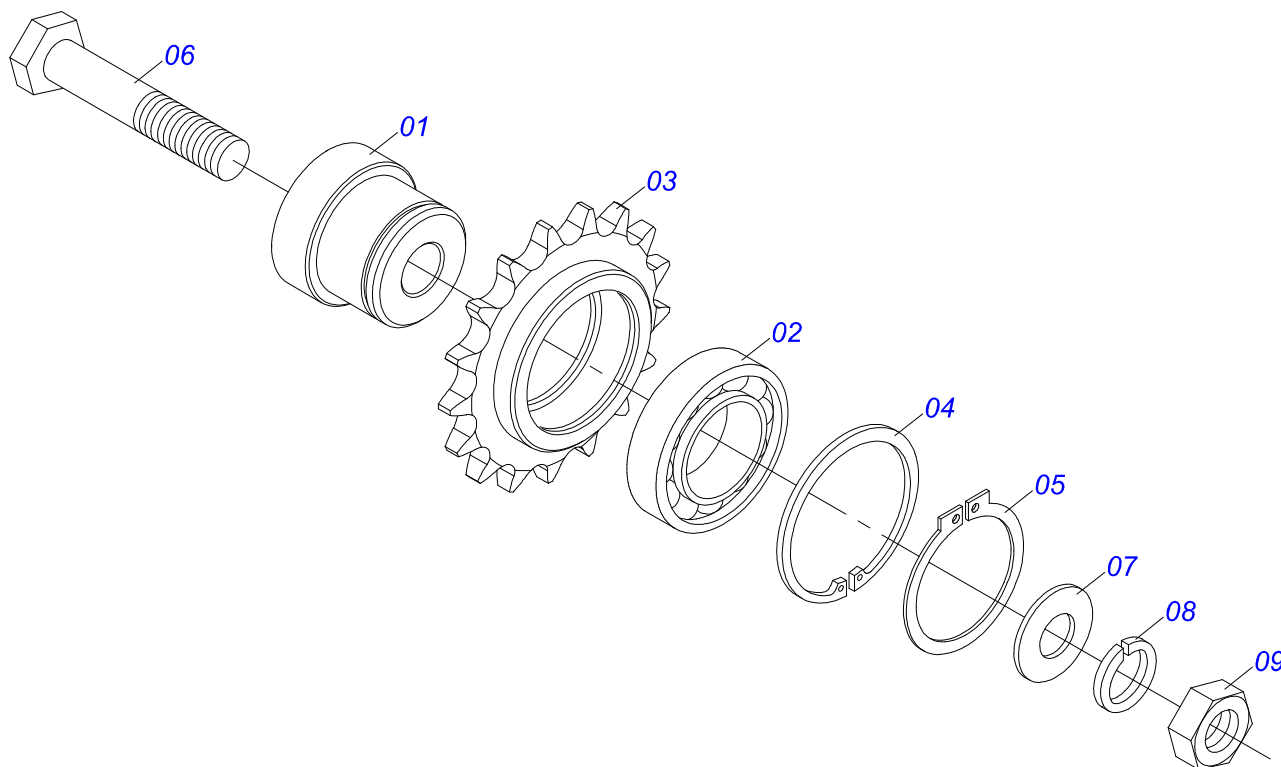
HYDRAULIC DRIVE ASSY

0511054744

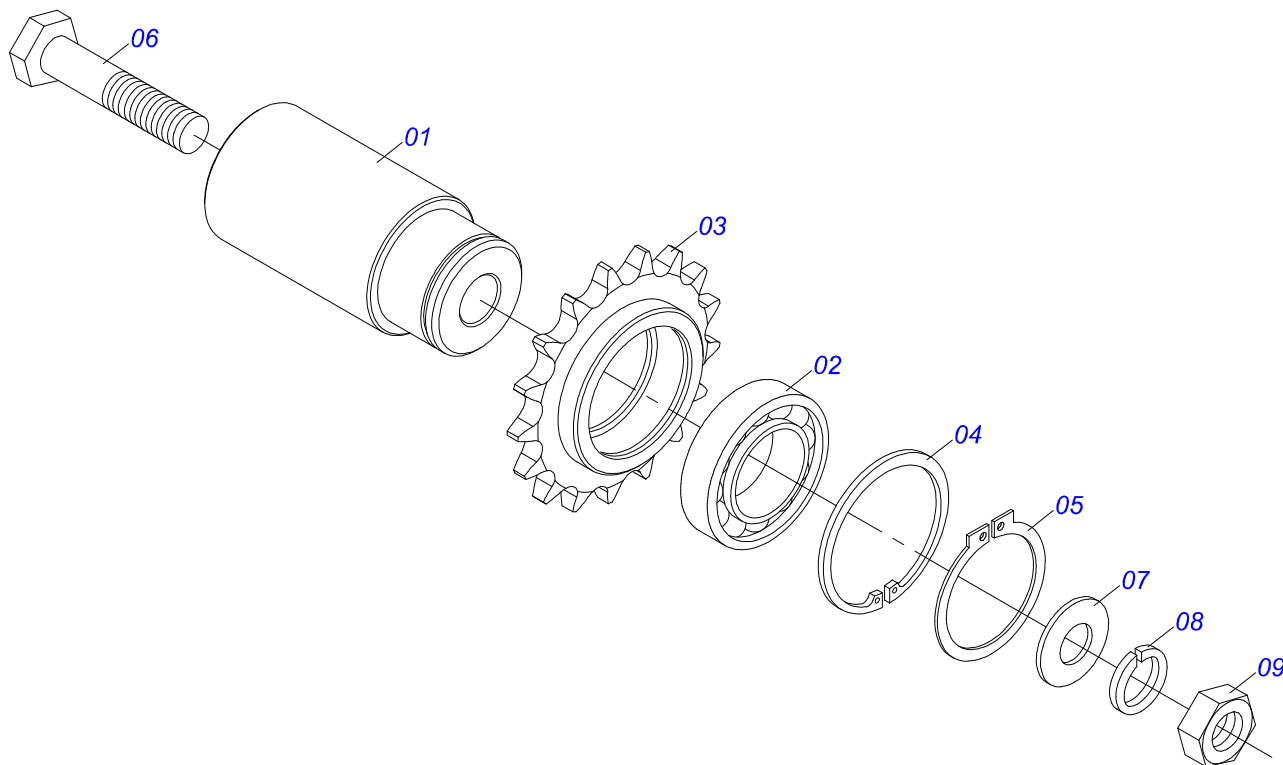
Item	Code	Description	See page	QT
32	0531011180	UPPER BODY CLIP		03
33	0503012555	SCREW 7/16 UNC X 2 CS RT G.7 ZN		03
34	0503010180	7/16" SPRING WASHER		03
35	0501060409	HOSE SOPPORT ASSY		01
36	0503010023	3/4" SPRING WASHER		01
37	0503010014	3/4" HEX NUT		01
38	0521066604	OIL TUBE		02
39	0501069017	12Z GEAR		01
40	0581011125	LOCK WASHER		01



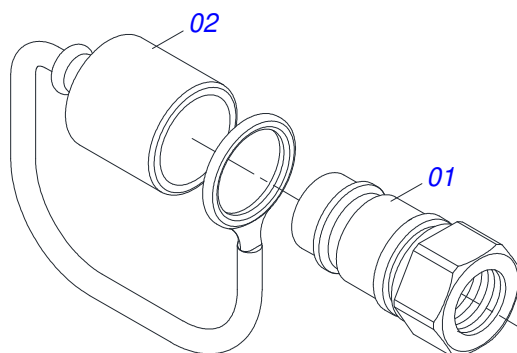
Item	Code	Description	See page	QT
01	0503016055	PARKER OMP 80 ISOBUS HYDRAULIC MOTOR		01
02	0511014065	7/8" NF X R1/2NPT X 52 NIPPLE		02



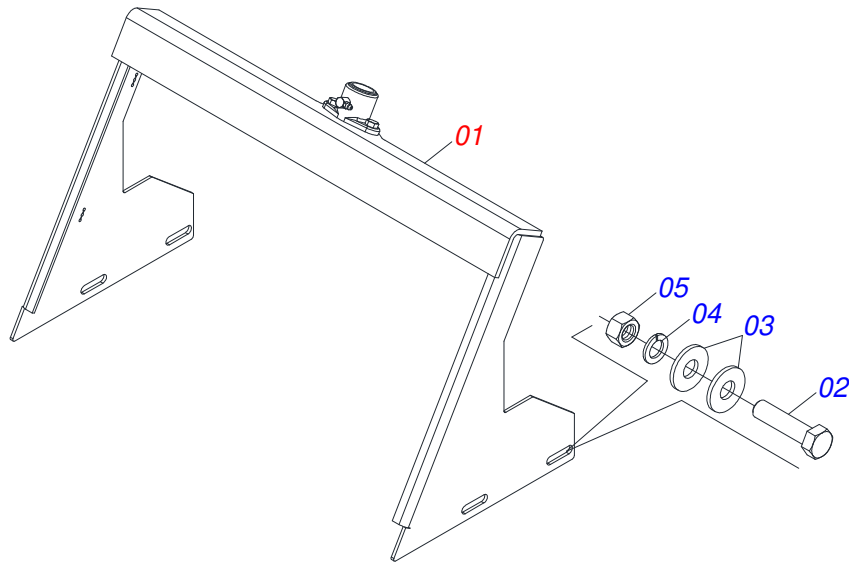
Item	Code	Description	See page	QT
01	0571015185	AXLE TIGHTENER 26		01
02	0503011410	ROLLER BEARING		01
03	0511061836	17Z GEAR		01
04	0503011105	SEAL RING		01
05	0503010406	501025 CLAMPING RING (FOR AXLE)		01
06	0501010096	3/8" X 2" BOLT		01
07	0501010984	10,50 X 27 X 3,00 FLAT WASHER		01
08	0503010025	3/8 SPRING WASHER		01
09	0503010026	3/8" NUT		01



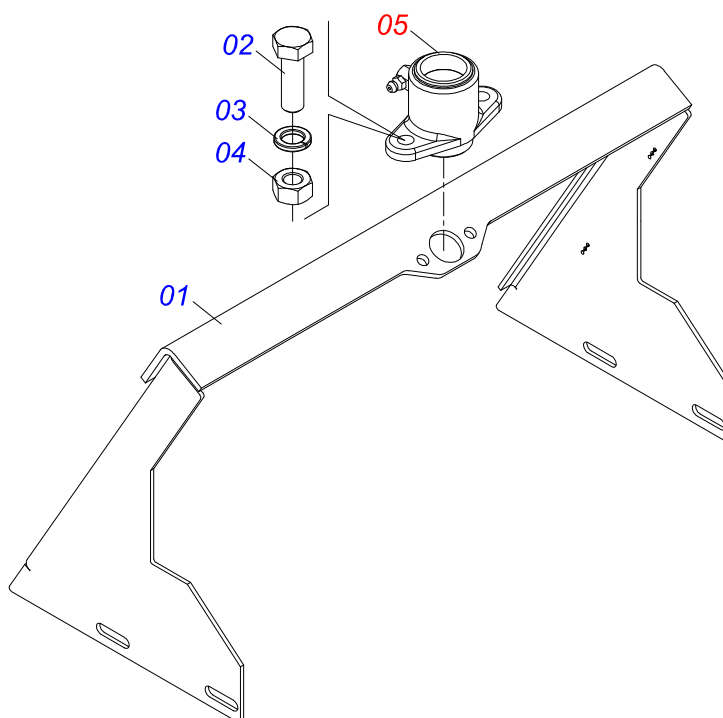
Item	Code	Description	See page	QT
01	0571015186	AXLE TIGHTENER 26		01
02	0503011410	ROLLER BEARING		01
03	0511061836	17Z GEAR		01
04	0503011105	SEAL RING		01
05	0503010406	501025 CLAMPING RING (FOR AXLE)		01
06	0503010718	3/8" X 3-1/2" BOLT		01
07	0501010984	10,50 X 27 X 3,00 FLAT WASHER		01
08	0503010025	3/8 SPRING WASHER		01
09	0503010026	3/8" NUT		01



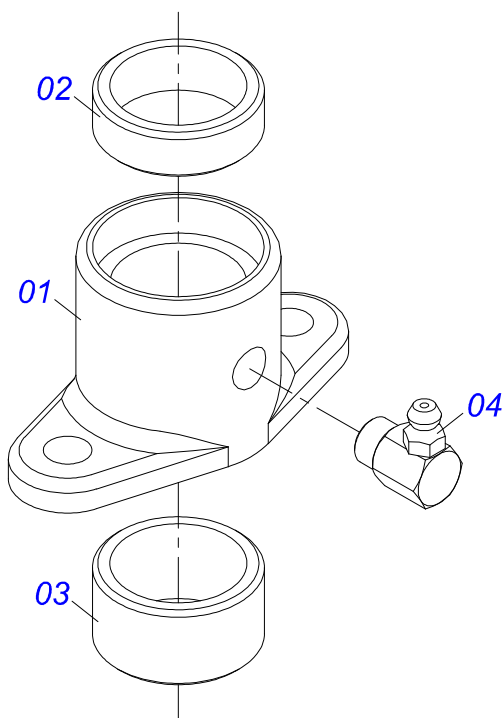
Item	Code	Description	See page	QT
01	0503011627	MALE QUICK COUPLER AGR 1/2 NPT		01
02	0503011882	MALE QUICK COUPLER CAP		01



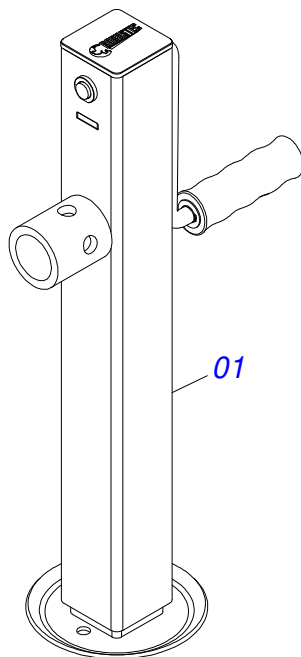
Item	Code	Description	See page	QT
01	0501054846	SLUICE VALVE SUPPORT	10	01
02	0503010751	C3/8" X 1.1/4" HEX BOLT G.5		04
03	0501010984	10,50 X 27 X 3,00 FLAT WASHER		08
04	0503010025	3/8 SPRING WASHER		04
05	0503010026	3/8" NUT		04



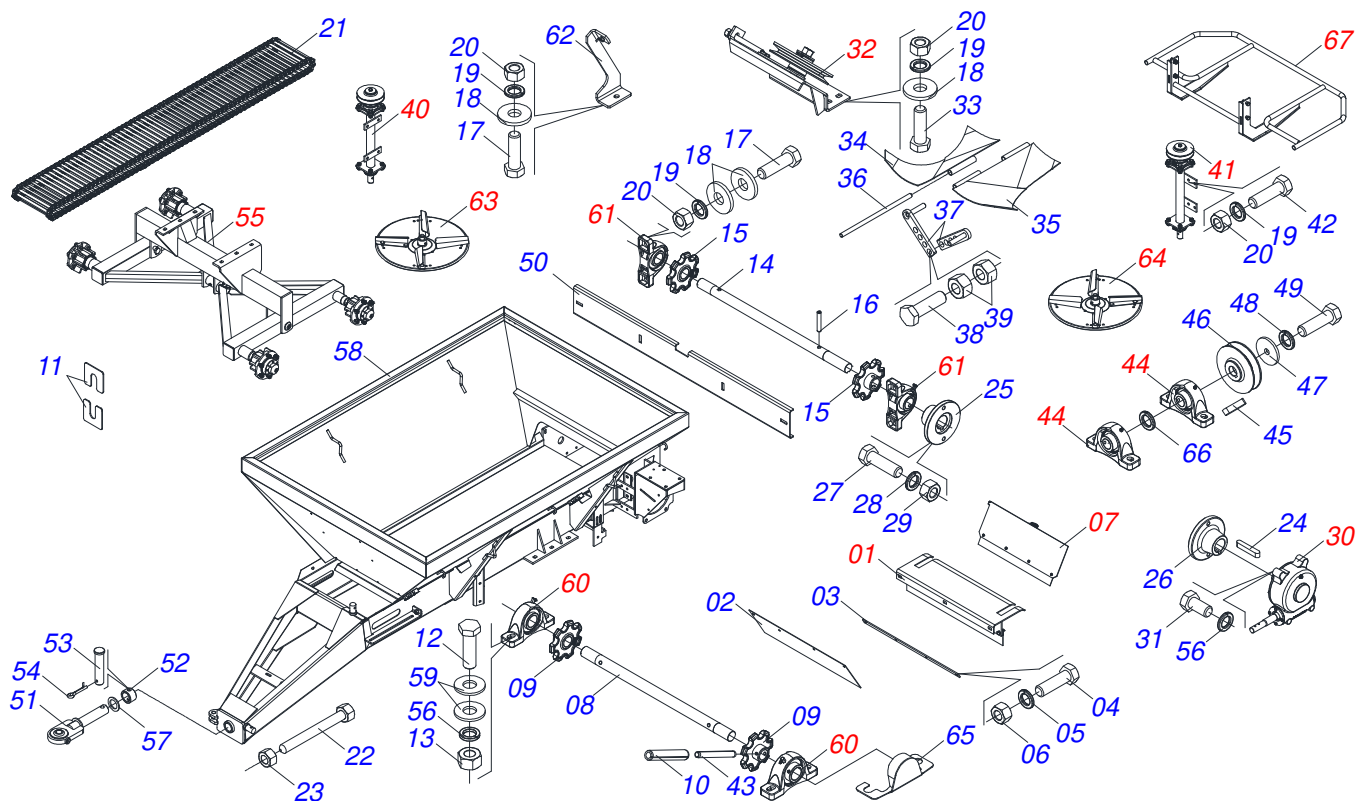
Item	Code	Description	See page	QT
01	0501069841	SLUICE VALVE SUPPORT		01
02	0503010371	5/16" X 1" BOLT		02
03	0503011444	SPRING WASHER		02
04	0503010337	5/16" NUT		02
05	0511059094	SHAFT BEARING THREADED	11	01



Item	Code	Description	See page	QT
01	0502010581	ROD BEARING		01
02	0521010458	SLEEVE		01
03	0521010457	SLEEVE		01
04	0503010004	1890 GREASE FITTING		01



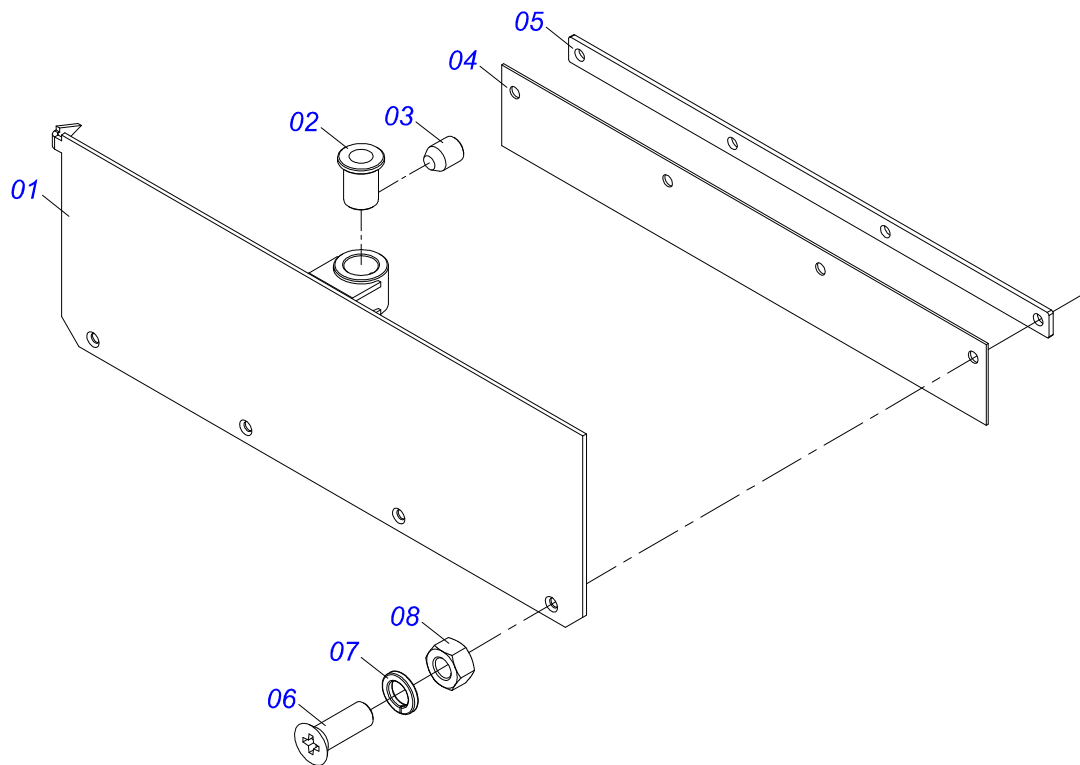
Item	Code	Description	See page	QT
01	0503062157	DRAWBAR JACK	12	01



Item	Code	Description	See page	QT
01	0511059305	REAR PROTECTION WITH MINOR PROTECTOR		01
02	0511011866	PROTECTION LARGER		01
03	0511016575	RUBBER COVER FIXER		01
04	0503010237	3/8" X 1" BOLT		08
05	0503011443	3/8" SPRING WASHER		08
06	0503010026	3/8" NUT		08
07	0501054847	SLUICE VALVE COVER ASSY	14	01
08	0511016482	DRIVEN AXLE		01
09	0502040728	7Z GEAR		02
10	0503010361	SPRING PIN		02
11	0501010794	HIDR CHOCK REGULATOR		04
12	0503010233	5/8" X 2-1/2" BOLT		04
13	0503010013	5/8 NUT		04
14	0511016481	MOTOR SHAFT		01
15	0502040728	7Z GEAR		02
16	0503010361	SPRING PIN		02
17	0503010740	BOLT 1/2 UNC X 2 CS G.5 ZN		04
18	0511017302	FLAT WASHER 13,50 X 32,50 X 3,0 ZN		13
19	0503011440	SPRING WASHER		23
20	0503010060	1/2 UNC G.5 ZN HEX NUT		23
21	0501067591	DRIVE THE FERTILIZER TRANSPORT		01
22	0501067853	ROD STABILIZER		02
23	0503010013	5/8 NUT		02
24	0501010540	KEYWAY SQUARE		02
25	0511016540	MAT COUPLING FLANGE		01
26	0511016541	REDUCTION COUPLING FLANGE		01
27	0503010849	3/8" X 1-1/2" BOLT		02
28	0503011443	3/8" SPRING WASHER		02
29	0503010026	3/8" NUT		02
30	0501047985	REDUCER	15	01
31	0503011167	M16 X 2 X 30 BOLT		04

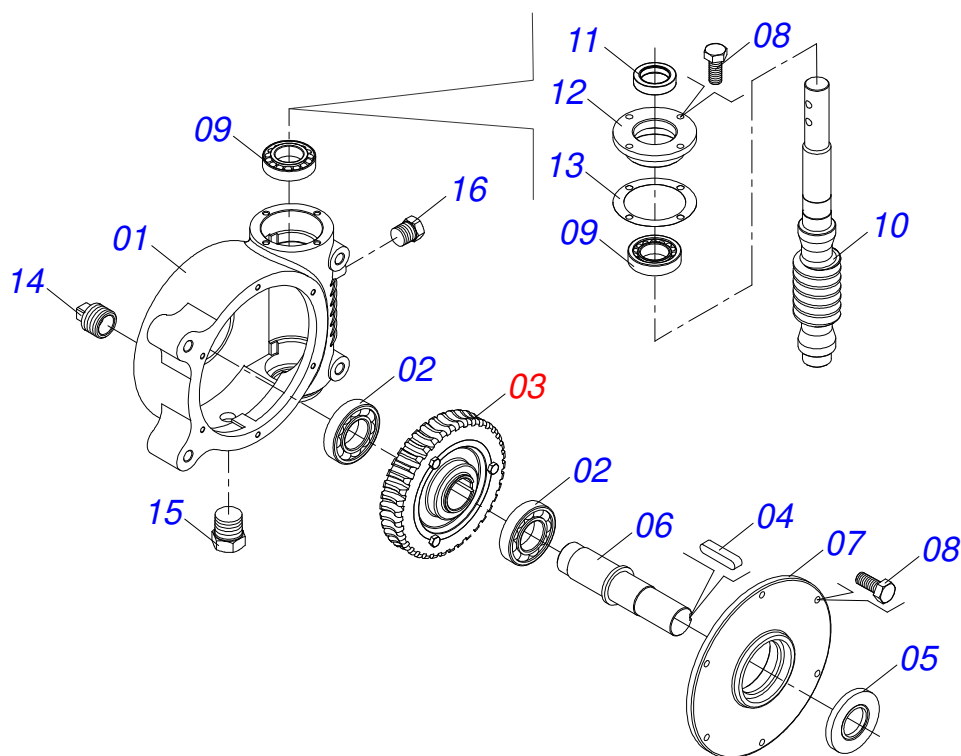


Item	Code	Description	See page	QT
32	0501046802	BELT TENSIONER ASSY	17	01
33	0503010920	1/2 UNC X 1.1/2 C S G.5 ZN BOLT		15
34	0501067203	RIGHT FLOW DIVIDING		01
35	0501067361	LEFT FLOW DIVIDING		01
36	0511016530	TENSIONER OPEN		01
37	0501067368	DIVISOR REGULATOR OPEN		02
38	0503010849	3/8" X 1-1/2" BOLT		01
39	0503010026	3/8" NUT		02
40	0501051782	RIGHT BEARING SUPPORT DISC	18	01
41	0501051783	LEFT BEARING SUPPORT DISC	19	01
42	0503010920	1/2 UNC X 1.1/2 C S G.5 ZN BOLT		08
43	0503010361	SPRING PIN		02
44	0511041213	AGRICULTURAL BEARING	21	02
45	0501010536	KEYWAY SQUARE		01
46	0502012936	1 C X 219 X 30 PULLEY		01
47	0511014052	FLAT WASHER		01
48	0503011446	SPRING WASHER		01
49	0503010355	7/16" X 1" BOLT		01
50	0501019838	BAMPER		01
51	0521068793	TRACTOR TRACTOR		01
52	0521010681	BUSHING COUPLING BODY		01
53	0521010639	COUPLING SHAFT		01
54	0503010571	1/4" X 1.1/2 COTTERPIN		01
55	0521045251	CARRYING-WHEEL FIXATION SUPP ASSY	22	01
56	0503011445	SPRING WASHER		16
57	0501015875	FLAT WASHER		01
58	0501069178	DCA2 5500 MC S-0398 BUCKET		01
59	0501012140	FLAT WASHER		08
60	0501044308	AGRICULTURAL BEARING ASSY	25	02
61	0501044308	AGRICULTURAL BEARING ASSY	25	02
62	0511060909	PROTECTION REAR SUPPORT FIXER		01
63	0501051972	DISTRIBUTOR RIGHT DISC ASSY	26	01
64	0501051973	DISTRIBUTOR LEFT DISC ASSY	27	01
65	0521068822	BEARING PROTECTION		03
66	0511016579	WASHER		01
67	0531050244	PROTECTOR DISC	28	01

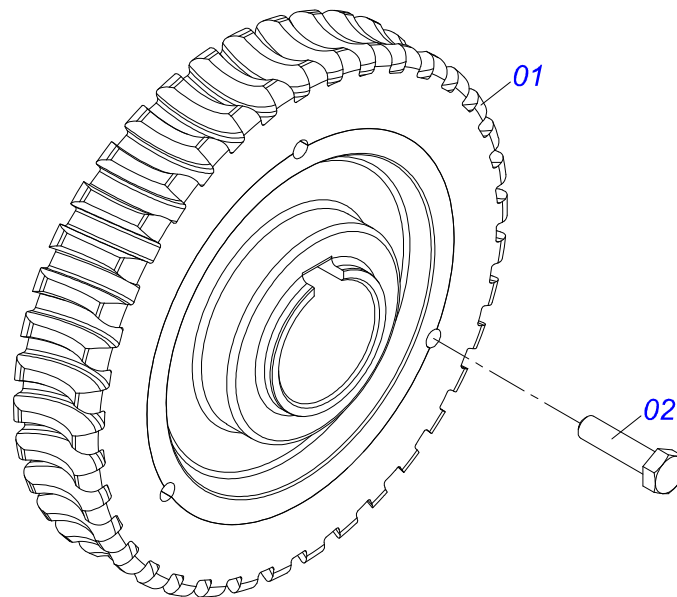


Item	Code	Description	See page	QT
01	0501069181	SLUICE VALVE COVER		01
02	0501019831	ADJUSTING NUT		01
03	0503011148	3/8" X 1/2" BOLT		01
04	0511014562	PROTECTION SMALLER		01
05	0511016575	RUBBER COVER FIXER		01
06	0503010546	5/16" X 7/8" BOLT		04
07	0503011444	SPRING WASHER		04
08	0503010337	5/16" NUT		04

REDUCER

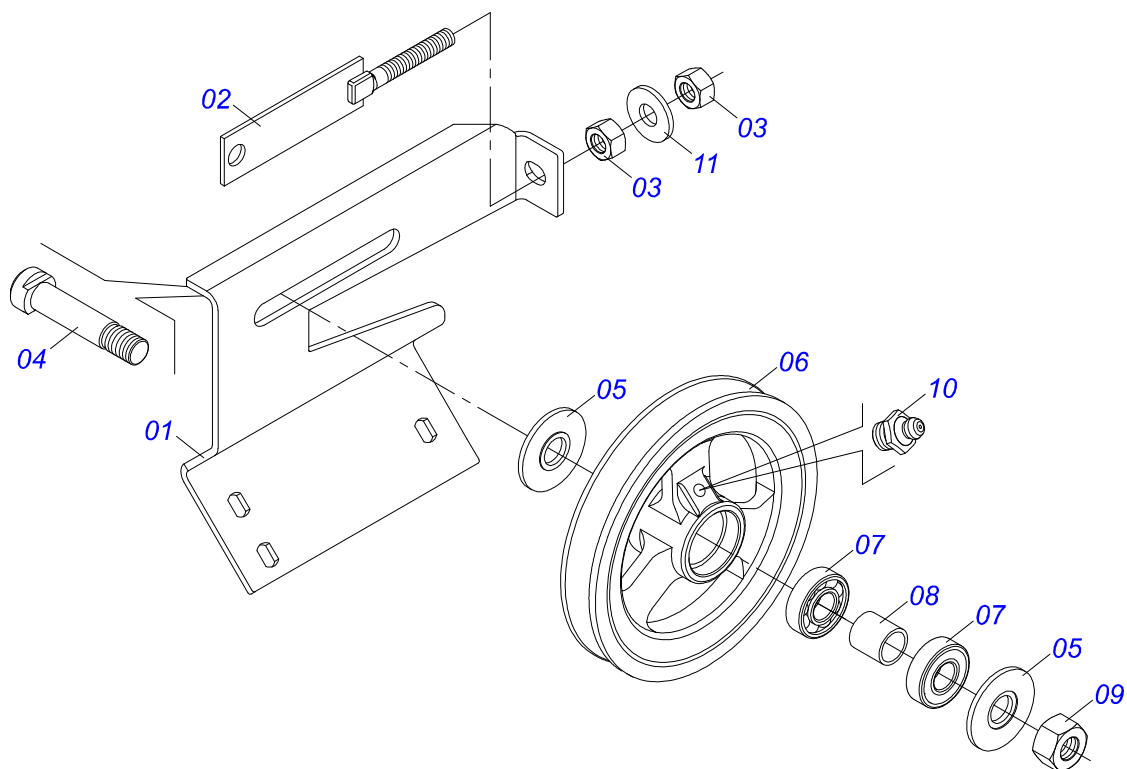


Item	Code	Description	See page	QT
01	0502011456	REDUCTION BOX		01
02	0503011095	6208 BALL BEARING		02
03	0501051774	38Z CROWN	16	01
04	0503011304	1/2" X 2.4" KEYWAY SQUARE		01
05	0503010818	02675-BRG SEAL		01
06	0521010996	AXLE		01
07	0502020556	LARGER COVER		01
08	0503010240	BOLT		10
09	0503010016	BEARING LM		02
10	0521010997	SCREW THEAD		01
11	0503011171	00912-BRG SEAL		01
12	0502011457	SMALLER COVER		01
13	0503030981	102 X 75,5 X 0,10 JOINT		01
14	0521011023	PLUG		01
15	0513010009	LEVEL DISPLAY		01
16	0503010856	OIL PLUG		01

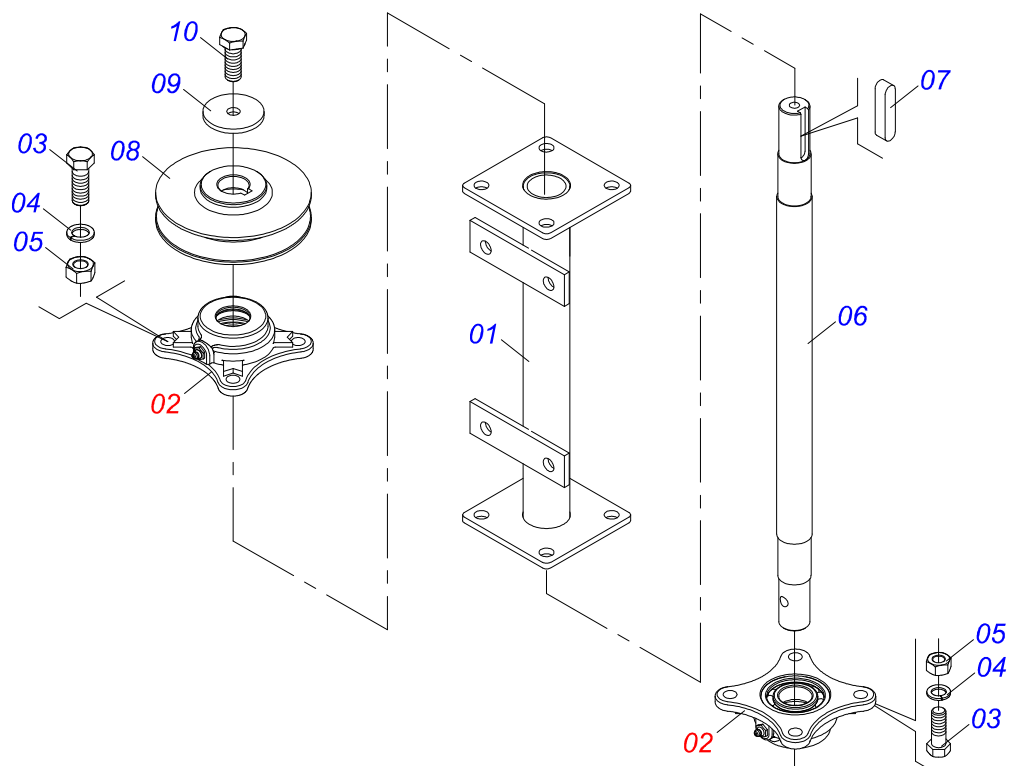


Item	Code	Description	See page	QT
01	0501110280	38Z CONICAL		01
02	0503010365	BOLT 5/16 UNC X 1.1/4 C S G.5 ZN		03

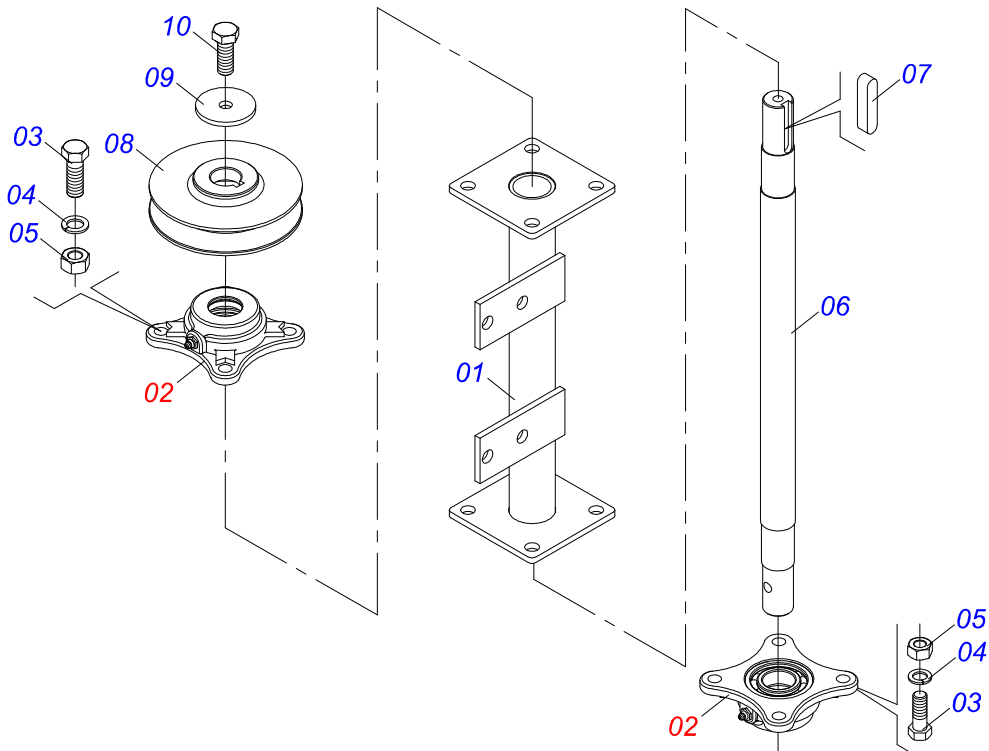
BELT TENSIONER ASSY



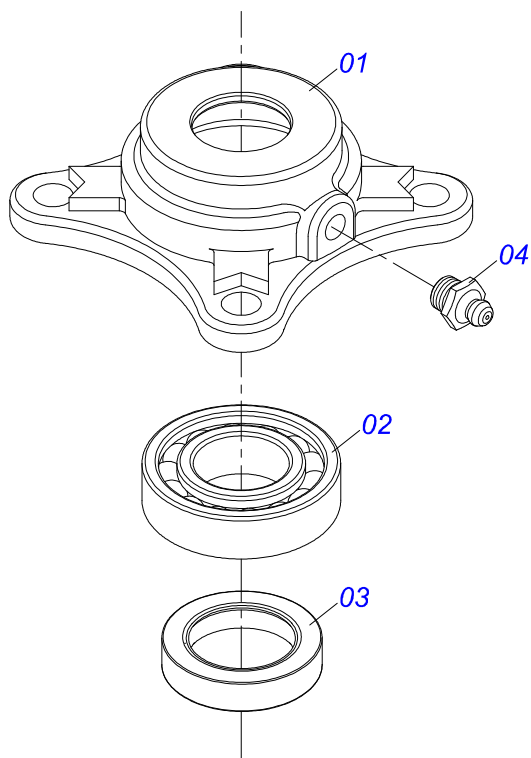
Item	Code	Description	See page	QT
01	0501066100	SUPPORT		01
02	0501065968	1C X 8.3 PULLEY TENSIONER		01
03	0503010013	5/8 NUT		02
04	0511012362	TIGHTENER AXLE PULLEY		01
05	0501019288	WASHER SPACER		02
06	0502011366	REEL 1C 8.3" X 1.6" PULLEY		01
07	0503010690	6204 BALL BEARING		02
08	0521010497	0.8" X 1.1" X 1.1" SPACER		01
09	0503010014	3/4" HEX NUT		01
10	0503010002	1800 GREASE FITTING		01
11	0501012140	FLAT WASHER		01



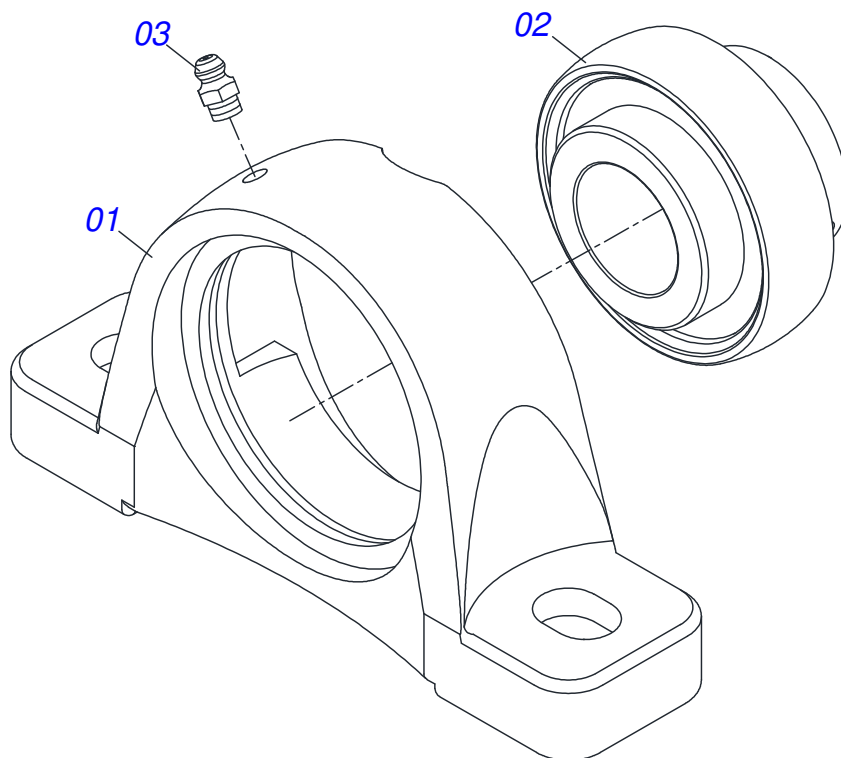
Item	Code	Description	See page	QT
01	0501067387	DISTRIBUTOR RIGHT SUPPORT DISC		01
02	0501048000	AGRICULTURAL BEARING	20	02
03	0503011102	BOLT 7/16 UNC X 1.1/4 C S G.5 ZN		08
04	0503011446	SPRING WASHER		08
05	0503010244	7/16" NUT		08
06	0511016489	DISTRIBUTOR AXLE CONDUCTOR DISC		01
07	0501010536	KEYWAY SQUARE		01
08	0502011361	REEL 1C 5.5" X 1.1" PULLEY		01
09	0511014052	FLAT WASHER		01
10	0503010355	7/16" X 1" BOLT		01



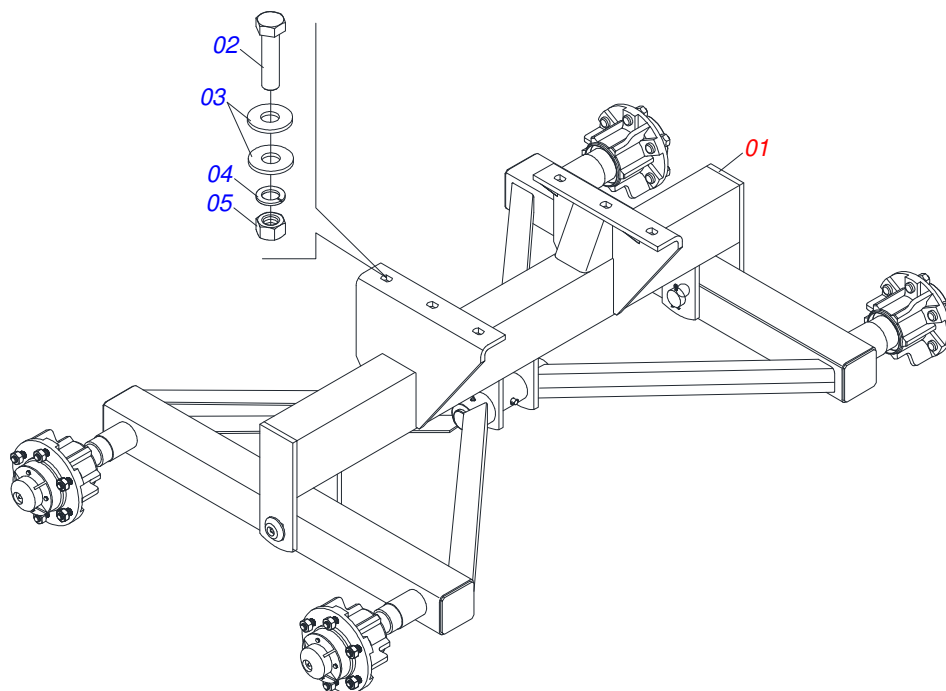
Item	Code	Description	See page	QT
01	0501067388	DISTRIBUTOR LEFT SUPPORT DISC		01
02	0501048000	AGRICULTURAL BEARING	20	02
03	0503011102	BOLT 7/16 UNC X 1.1/4 C S G.5 ZN		08
04	0503011446	SPRING WASHER		08
05	0503010244	7/16" NUT		08
06	0511016489	DISTRIBUTOR AXLE CONDUCTOR DISC		01
07	0501010536	KEYWAY SQUARE		01
08	0502011361	REEL 1C 5.5" X 1.1" PULLEY		01
09	0511014052	FLAT WASHER		01
10	0503010355	7/16" X 1" BOLT		01



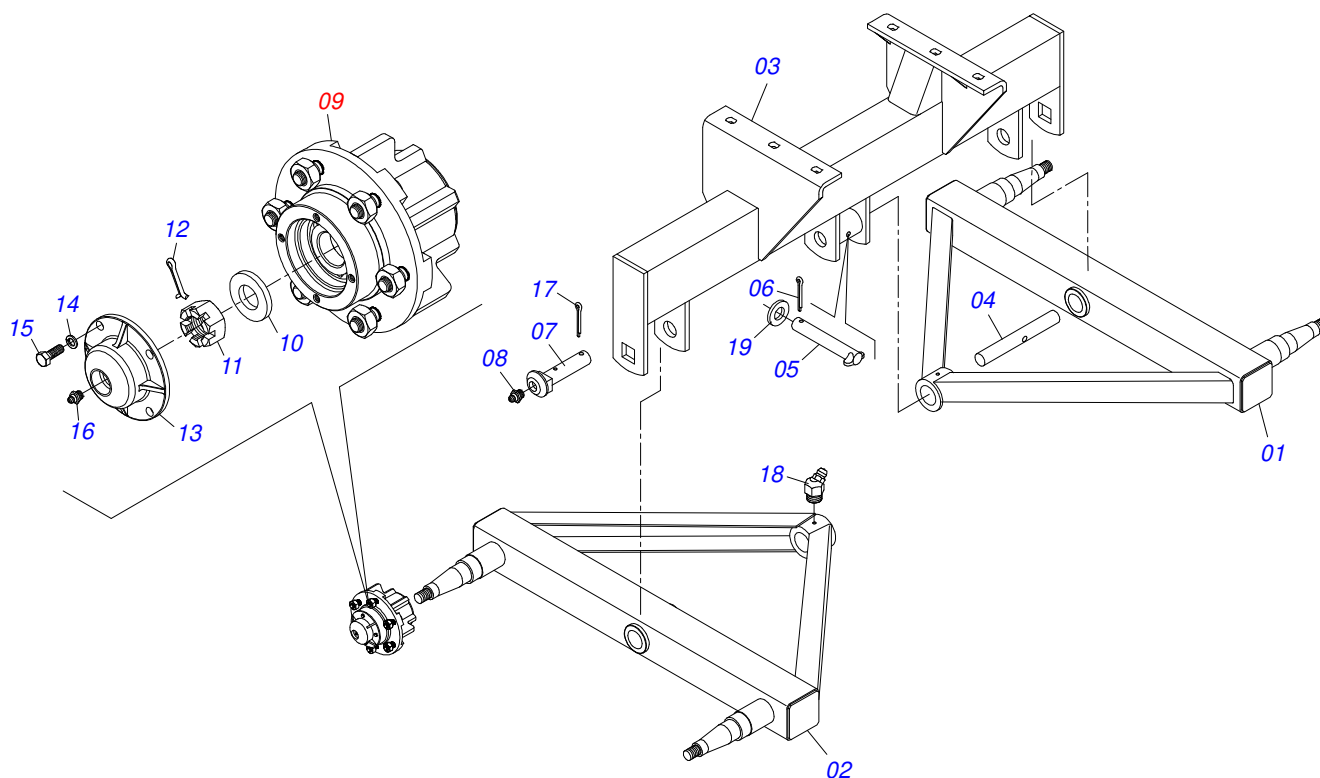
Item	Code	Description	See page	QT
01	0502011442	AGRICULTURAL HOUSING BEARING		01
02	0503010276	6206 BALL BEARING		01
03	0503011865	SEAL		01
04	0503010002	1800 GREASE FITTING		01



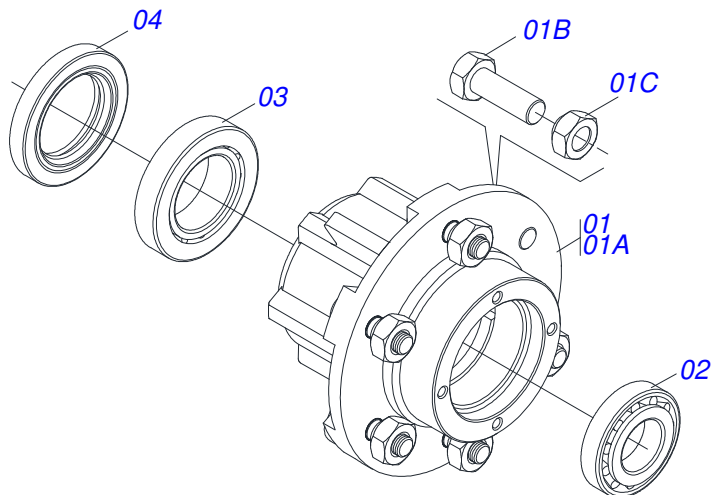
Item	Code	Description	See page	QT
01	0502011954	AGRICULTURAL HOUSING BEARING		01
02	0503011884	BALL BEARING		01
03	0503010691	1/4" GREASE FITTING		01



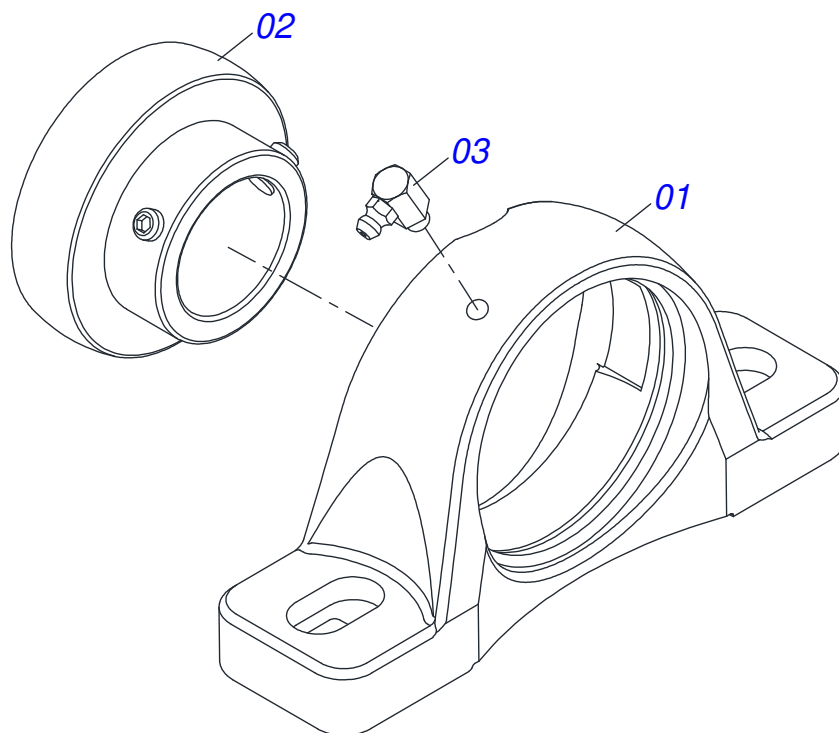
Item	Code	Description	See page	QT
01	0501047998	BELL CRANK FIXATION SUPPORT ASSY	23	01
02	0503010233	5/8" X 2-1/2" BOLT		06
03	0501012140	FLAT WASHER		12
04	0503011445	SPRING WASHER		06
05	0503010013	5/8 NUT		06



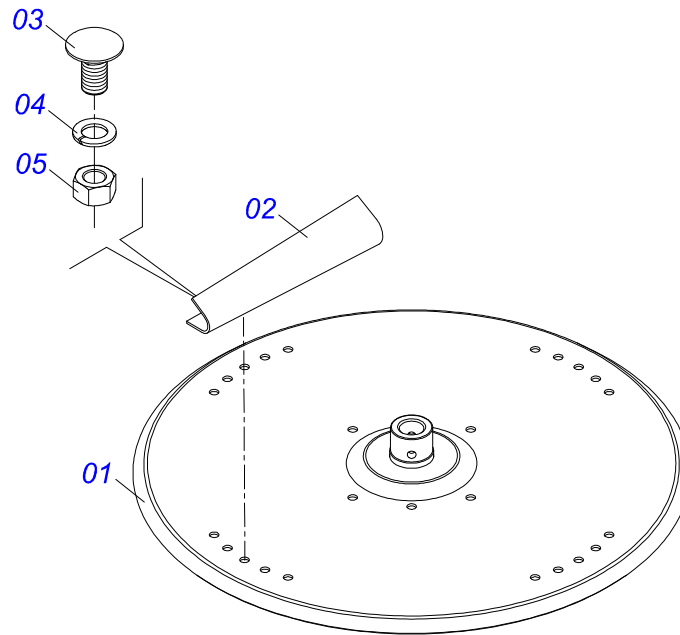
Item	Code	Description	See page	QT
01	0501069182	RIGHT ROCKER ARM		01
02	0501069183	LEFT ROCKER ARM		01
03	0521062814	BELL CRANK SUPPORT FIXATION		01
04	0521011118	COUPLING SHAFT		01
05	0521010553	0.5" X 3" COUPLING SHAFT		01
06	0503010297	5/32" X 1.1/4" COTTER PIN		01
07	0521010956	PIVOT SHAFT		02
08	0503010002	1800 GREASE FITTING		02
09	0501051142	CARRYING WHEEL HUB	24	04
10	0501016545	FLAT WASHER		04
11	0503030009	1" CASTLE NUT		04
12	0503010131	3/16" X 1-1/2" COTTERPIN		04
13	0502020591	PROTECCION COVER		04
14	0503011444	SPRING WASHER		16
15	0503010358	5/16" X 5/8" BOLT		16
16	0503010002	1800 GREASE FITTING		04
17	0503010534	3/8 X 2-1/2 COTTERPIN		02
18	0503010003	1845 GREASE FITTING		02
19	0511017302	FLAT WASHER 13,50 X 32,50 X 3,0 ZN		02



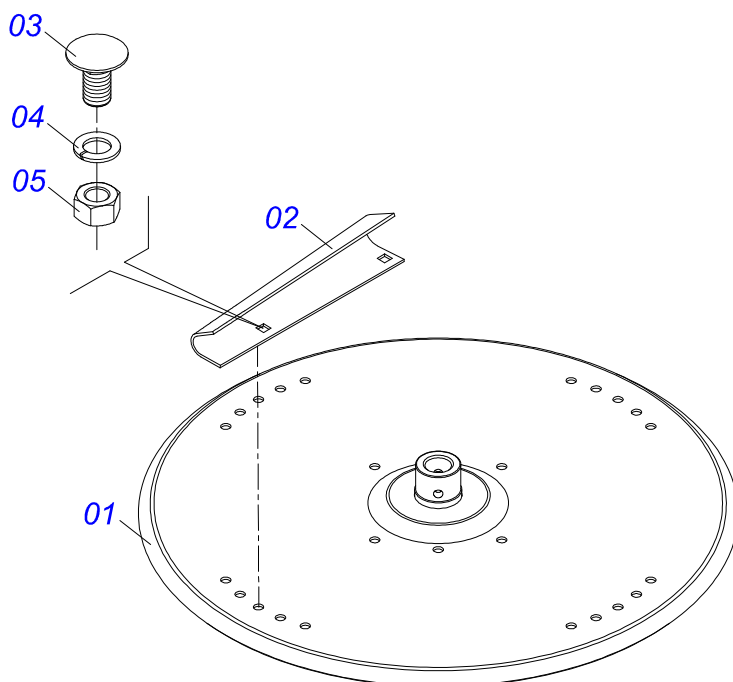
Item	Code	Description	See page	QT
01	0501110728	WHEEL HUB		01
01A	0502011121	CARRYING WHEEL HUB		01
01B	0501010127	9/16" X 1-7/8" LUG BOLT		06
01C	0503010035	9/16" CONIC NUT		06
02	0503010037	30207 ROLLER BEARING		01
03	0503010006	32210 ROLLER BEARING		01
04	0503012928	SEAL		01



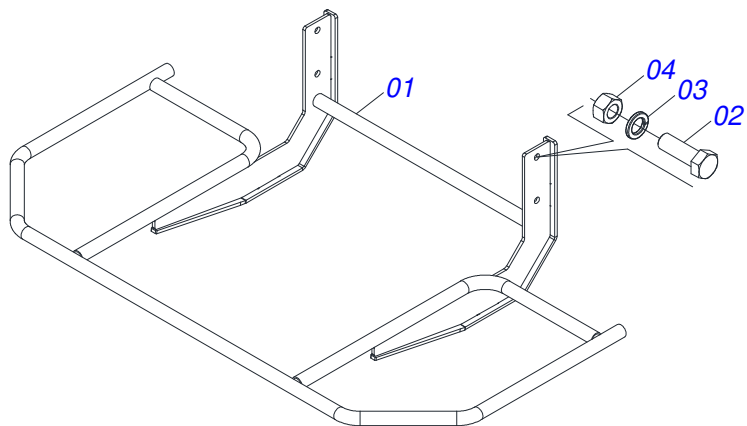
Item	Code	Description	See page	QT
01	0502011050	AGRICULTURAL HOUSING BEARING		01
02	0503011163	1108/UCR BEARING ASSY		01
03	0503010004	1890 GREASE FITTING		01



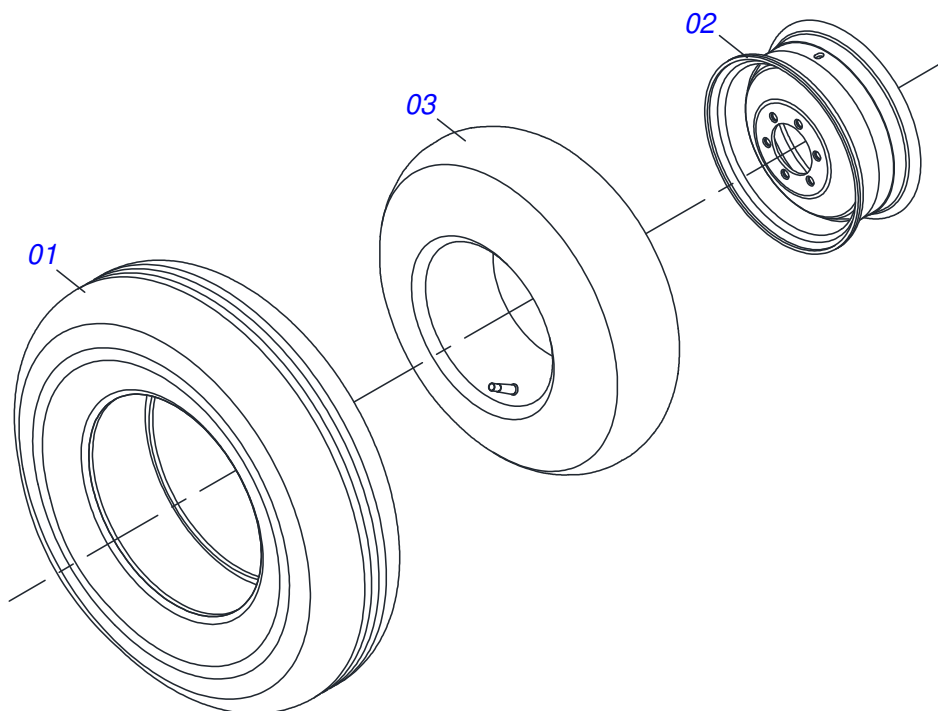
Item	Code	Description	See page	QT
01	0501069605	DISTRIBUTOR DISC		01
02	0521018638	LH FLIP		04
03	0503013029	3/8" X 3/4" BOLT		08
04	0503011443	3/8" SPRING WASHER		08
05	0503010026	3/8" NUT		08



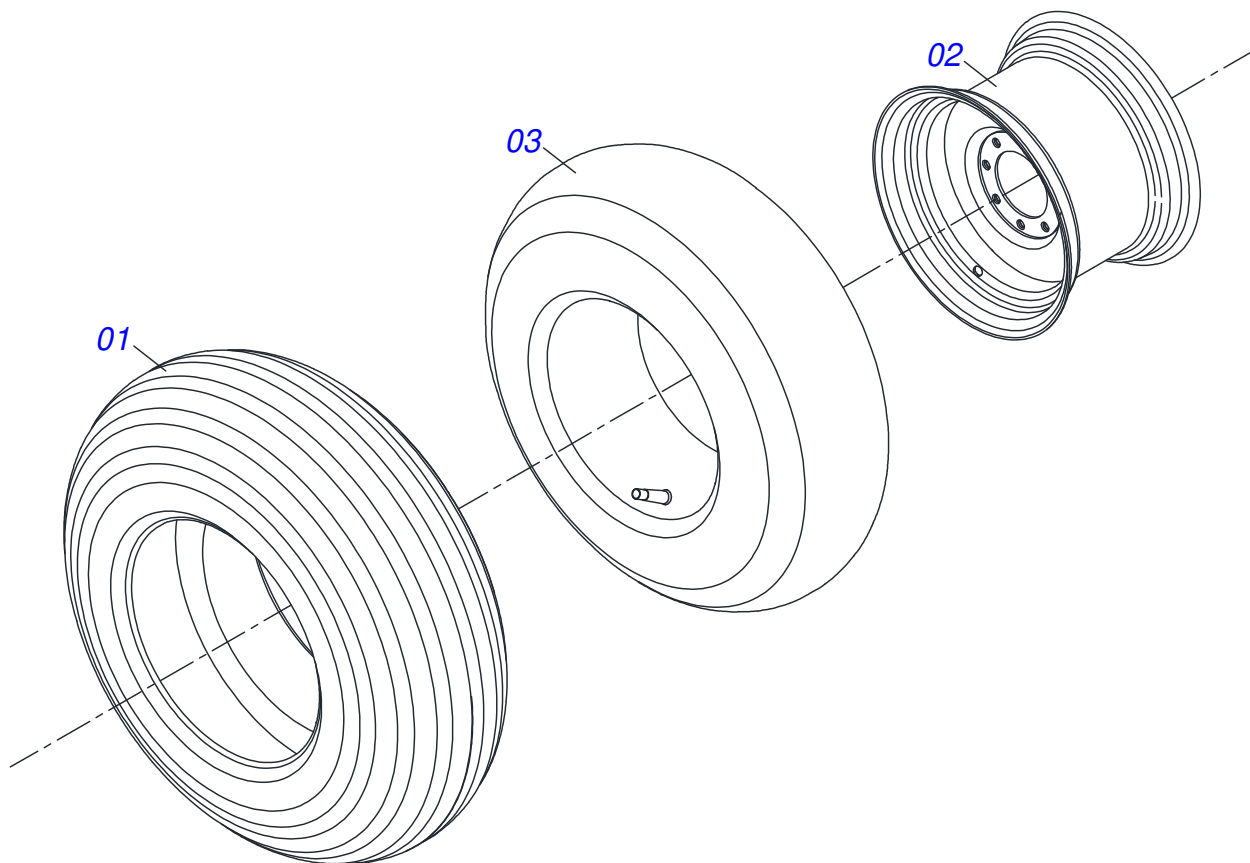
Item	Code	Description	See page	QT
01	0501069605	DISTRIBUTOR DISC		01
02	0521018637	LEFT FLIP		04
03	0503013029	3/8" X 3/4" BOLT		08
04	0503011443	3/8" SPRING WASHER		08
05	0503010026	3/8" NUT		08



Item	Code	Description	See page	QT
01	0531061810	DISC PROTECTION		01
02	0503010920	1/2 UNC X 1.1/2 C S G.5 ZN BOLT		04
03	0503011440	SPRING WASHER		04
04	0503010060	1/2 UNC G.5 ZN HEX NUT		04



Item	Code	Description	See page	QT
01	0503010120	CANVAS TIRE		01
02	0521062708	WHEEL 5,50 X 16 X 118 X 6F 16,50 X 152,40		01
03	0503010033	7.50 X 16 INNER TIRE		01



Item	Code	Description	See page	QT
01	0503010858	CANVAS TIRE		01
02	0503011468	WEEL		01
03	0503010860	AIR CHAMBER 11L 15		01



MARCHESAN

Technical Publications | Elaboration and Revision

LORENA ROCHA ALVES

www.marchesan.com.br

