

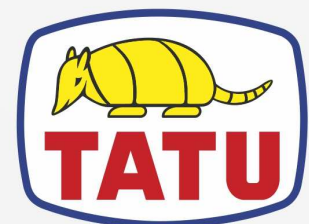
ROTARY CUTTERS

**RC2/E 1500 - WITH 03 WHEELS AND CURRENT
PROTECTION**

**RC2/E 1500 - COM 03 RODAS E PROTECAO
CORRENTE**

Code: 0501093147
Series: S-0220
Revision: 00
Revision Date: SEPTEMBER/2021

PARTS CATALOGUE



MARCHESAN



PRODUCTS

Code	Working Width	Description
0104120087		RC2/E 1500 CENT/DIR/ESQ C/3R C/PRT S-0220

ATTENTION: IMPORTANT

Marchesan S.A. reserves the right to improve and/or modify the technical features of its products, without obligation to do the same with those products already sold and without prior knowledge of the dealer or the customer. The photos are only illustrative.

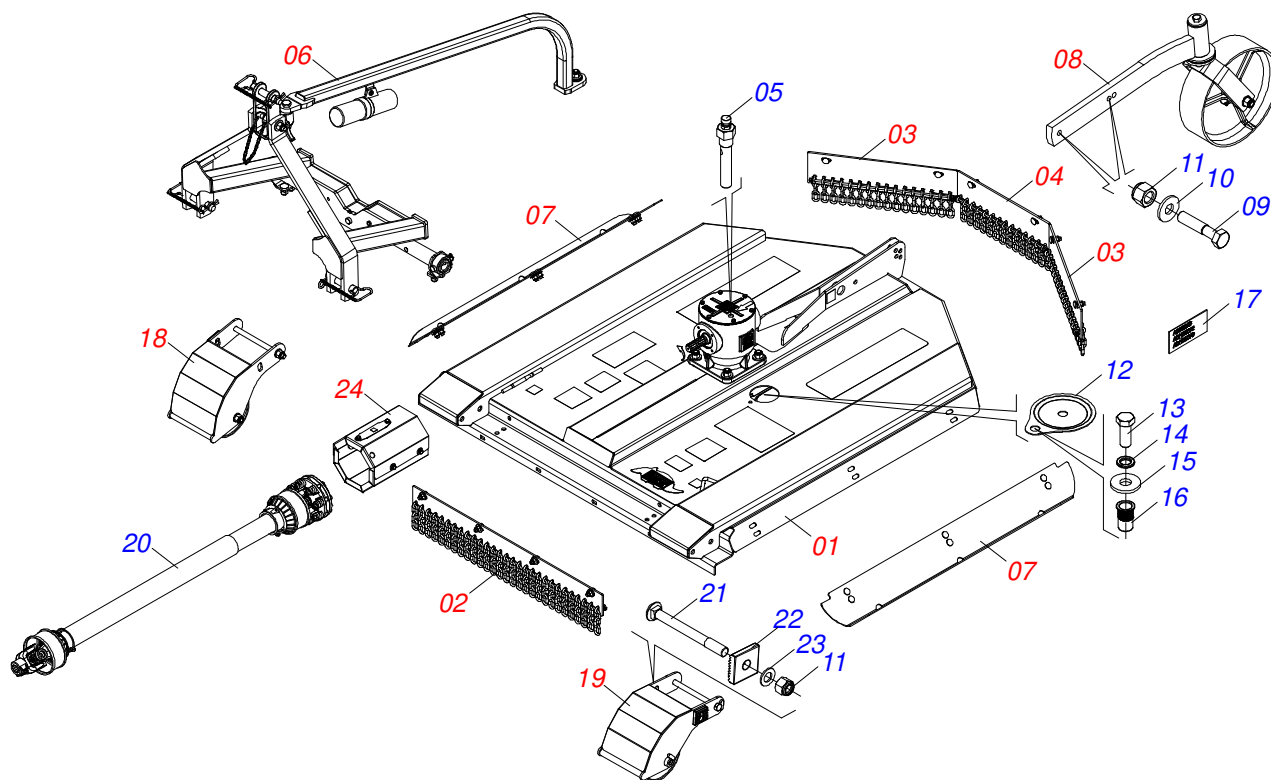


MARCHESAN

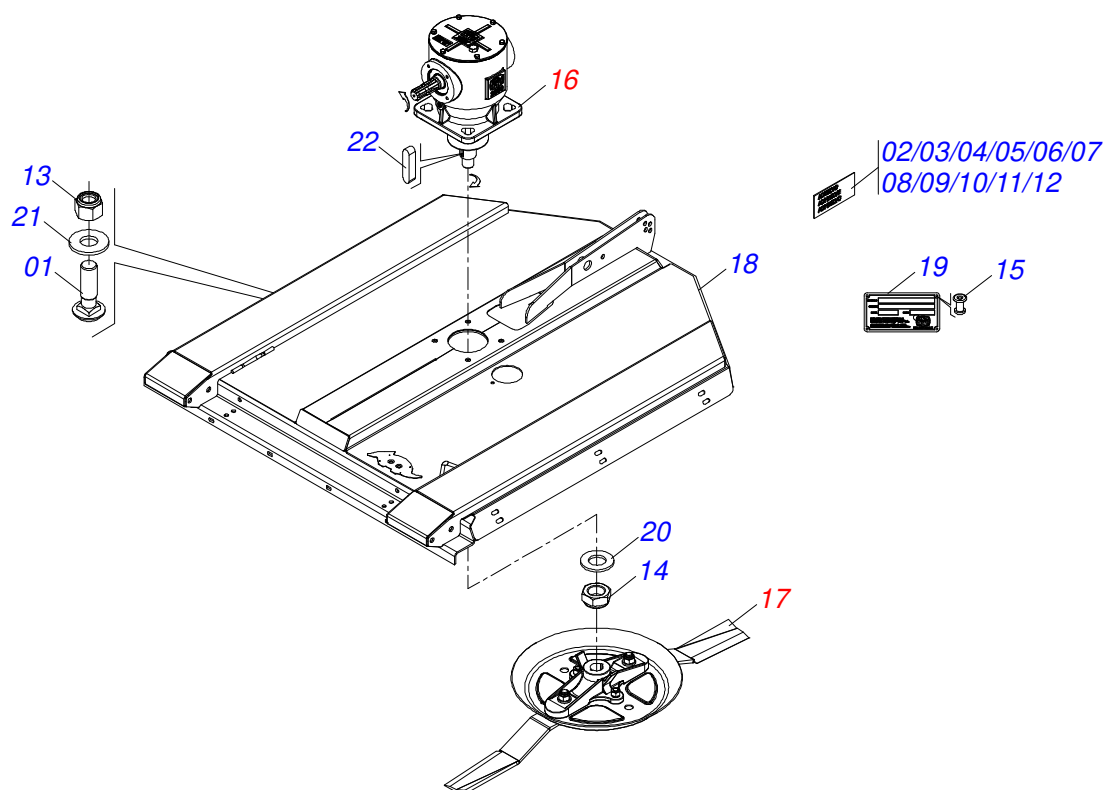
INDEX

0531040153	ASSY FRAME	1
0521058166	SEMI MOUNTED FRAME	2
0503063419	MULTIPLIER ANTI TIME P0XX-MLD (1.3/8)	3
0521058361	SUPPORT (340) WITH CUTTER AND DEFLECTOR	4
0521058164	FRONT CURRENT PROTECTION	5
0521058165	REAR SIDE CURRENT PROTECTION	6
0521058158	REAR CENTRAL CURRENT PROTECTION	7
0909096005	HEADER ASSY	8
0521054328	AXLE 27,80 X EC 130 ASSY	9
0521054135	AXLE 25,00 X EC 130 ASSY	10
0521051872	DOOR ASSY INSTRUCTION MANUAL	11
0909096006	LATERAL PROTECTION ASSEMBLY	12
0521058159	ASSY SWING WHEEL	13
0501058460	CARRYING WHEELS	14
0521058162	FRONT WHEEL 202 WITH ASSY RIGHT PROTECTION	15
0521058161	FRONT WHEEL 202 WITH ASSY LEFT PROTECTION	16
0521058163	FRONT WHEEL 202 WITHOUT ARM	17
0909096007	MULTIPLIER COVER ASSEMBLY	18

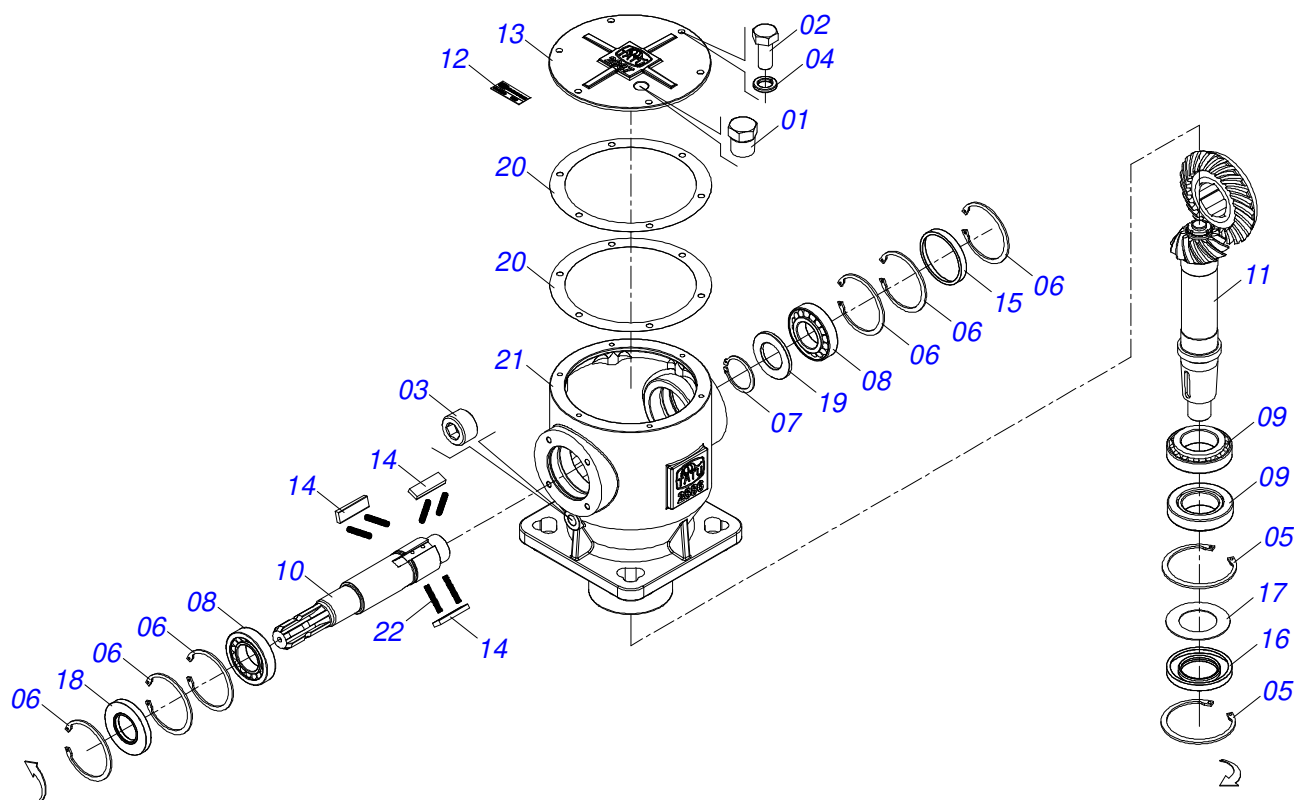
ASSY FRAME



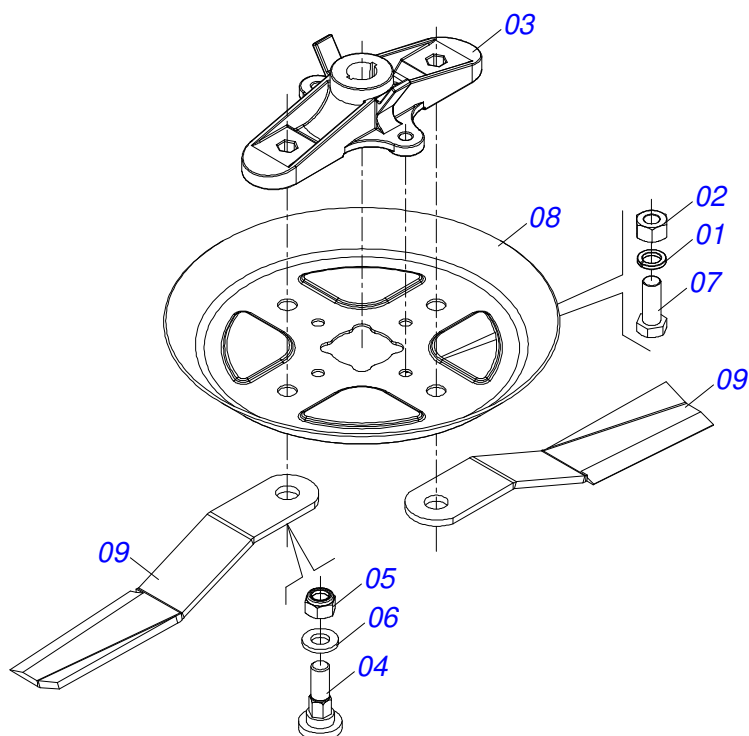
Item	Code	Description	See page	QT
01	0521058166	SEMI MOUNTED FRAME	2	01
02	0521058164	FRONT CURRENT PROTECTION	5	01
03	0521058165	REAR SIDE CURRENT PROTECTION	6	02
04	0521058158	REAR CENTRAL CURRENT PROTECTION	7	01
05	0501110186	OIL SMALLER LEVEL INDICATOR		01
06		HEADER ASSY	8	
07		LATERAL PROTECTION ASSEMBLY	12	
08	0521058159	ASSY SWING WHEEL	13	01
09	0501011541	5/8 UNC X 3 CS G.5 ZN1K28066 BOLT		02
10	0501012140	FLAT WASHER 16,50 X 40 X 4,00 ZN		02
11	0503011075	3/4 UNC LOCK NUT		04
12	0591012025	ACCESS COVER		01
13	0503010237	3/8" X 1" BOLT		01
14	0503010025	3/8 SPRING WASHER		01
15	0501010984	10,50 X 27 X 3,00 FLAT WASHER		01
16	0503019413	THREAD SCREW INTERNAL		01
17	0503031087	AUTO CONTROL APPROVED DECAL		01
18	0521058162	FRONT WHEEL 202 WITH ASSY RIGHT 15 PROTECTION		01
19	0521058161	FRONT WHEEL 202 WITH ASSY LEFT 16 PROTECTION		01
20	0501049322	CARDAN 40X 1100 T1/FRI CP CC2026/14PE		01
21	0503019836	BOLT 3/4 -10 UNC - 2A X 12 CAPQ RP G.5 ZN		02
22	0581019983	SCREW RACK 3/4 GR		02
23	0501010941	FLAT WASHER		02
24		MULTIPLIER COVER ASSEMBLY	18	



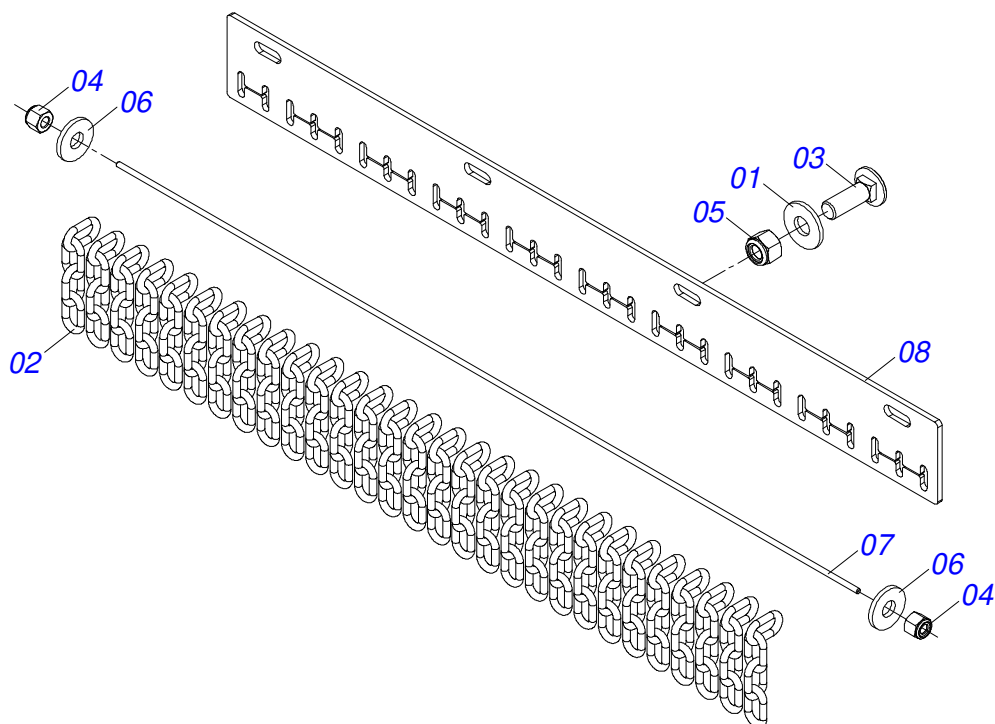
Item	Code	Description	See page	QT
01	0503014249	3/4" X 2-1/2" BOLT		04
02	0503035102	ADHESIVE LABEL		01
03	0503034333	TATU MARCHESAN LOGO DECAL		01
04	0503034078	LIFTING POINTS DECAL		03
05	0503032949	ATTENTION 3 LANGUAGES DECAL		01
06	0503032534	IMPORTANT FRICTION ADJUSTMENT DECAL		01
07	0503031931	ADHESIVE LABEL		01
08	0503031930	DANGER ROTATING BLADES DECAL		01
09	0503031929	SPECIAL BLADES EQUIPMENT DECAL		01
10	0503031428	READ MANUAL DECAL		01
11	0503031427	ATTENTION POWER SPOT DECAL		01
12	0503031127	RESPIRO DECAL		01
13	0503011075	3/4 UNC LOCK NUT		04
14	0503010044	SELF LOCKING NUT 1.1/4 UNF G.5 ZN		01
15	0503010001	RIVET 3,2 X 5,5		04
16	0503063419	MULTIPLIER ANTI TIME P0XX-MLD (1.3/8)	3	01
17	0521058361	SUPPORT (340) WITH CUTTER AND DEFLECTOR	4	01
18	0531061008	FRAME		01
19	0503034003	61 X 118 SERIAL NUMBER TAG		01
20	0501017779	FLAT WASHER 32 X 60 X 4,75		01
21	0501010322	20,50 X 46 X 4,00 ZN FLAT WASHER		04
22	0501010536	KEYWAY SQUARE		02



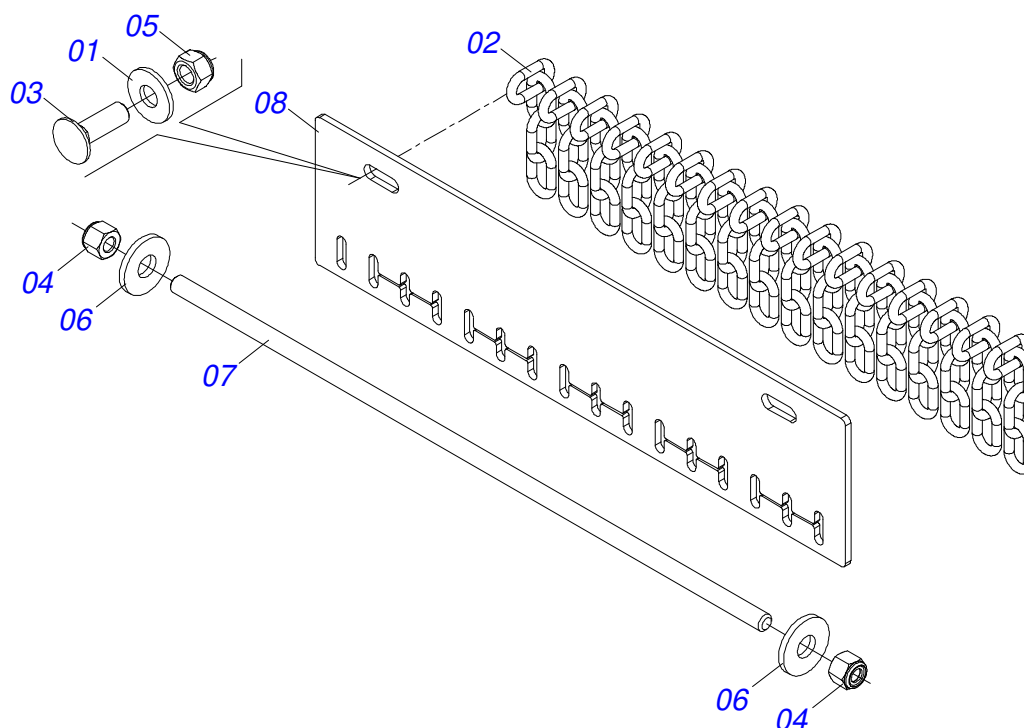
Item	Code	Description	See page	QT
01	0503031604	1/2" BSP PLUG		01
02	0503010240	BOLT		06
03	0503012151	3/8" BSP PLUG		01
04	0503011444	SPRING WASHER 5/16"		06
05	0503011190	SEAL RING		02
06	0503011100	502080 CLAMPING RING (FOR AXLE)		06
07	0503010372	501050 CLAMPING RING (FOR AXLE)		01
08	0503010360	30208 ROLLER BEARING		02
09	0503010006	32210 ROLLER BEARING		02
10	0503034949	TOP MULTIPLIER AXIS		01
11	0503063076	CROWN / PINION ASSY		01
12	0503034951	IDENTIFICATION PLATE		01
13	0502012887	SINGLE BODY MULTIPLIER COVER		01
14	0503018042	COTTER		03
15	0503018039	RETAINER COVER 6735 NR ARK 80 X 10		01
16	0503018040	RETAINER 5140 ARCA 50 X 90 X 10 BRG		01
17	0571019968	WASHER 52 X 88 X 1.50		01
18	0503018041	RETAINER 6882 ARCA 40 X 80 X 10 BRG		01
19	0571019967	WASHER 40.4 X 70 X 5.00		01
20	0503034254	SEAL JOINT 221.5 X 180 X 0.20 - MULTIPLICATOR		02
21	0502012886	SINGLE BODY MULTIPLIER BOX		01
22	0503030051	0.2" X 1" X 0.1" COMPRESSION SPRING		06
23	3402301247	MINERAL OIL SAE 140		03



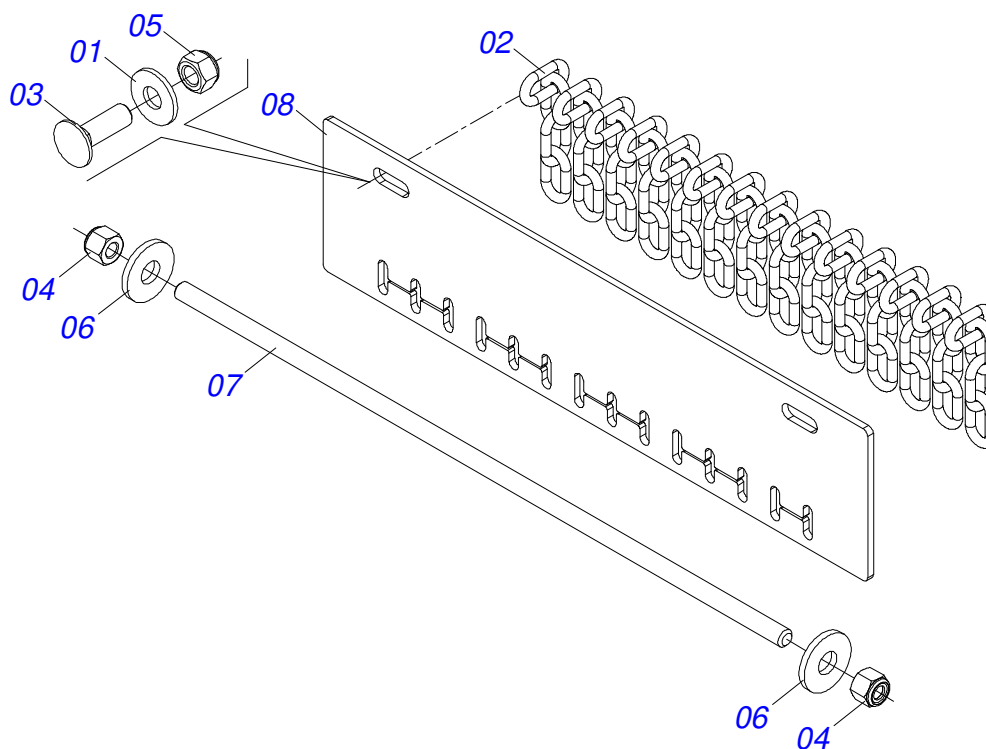
Item	Code	Description	See page	QT
01	0503011442	3/4" SPRING WASHER		02
02	0503010014	3/4" ZN G.5 (HEAVY) UNC HEX NUT		02
03	0502012275	ROTARY SUPPORT 340		01
04	0541013328	FASTENER		02
05	0503010063	1" SELF-ALIGNING NUT		02
06	0501016545	FLAT WASHER		02
07	0501010098	BOLT 3/4" UNC X 2 C S G.5 ZN		02
08	0591010130	SUPPORT DEFLECTOR (340)		01
09	0622340051	24.5" X 3.94" X 0.5" ROTARY CUTTER RIGHT		02



Item	Code	Description	See page	QT
01	0511017302	FLAT WASHER 13,50 X 32,50 X 3,0 ZN		04
02	0511011774	8,00 CHAIN 4 LINK		29
03	0503014378	1/2" X 1-1/2" BOLT		04
04	0503013759	NUT		02
05	0503010589	1/2" UNC SELF ADJUSTING NUT		04
06	0501010984	10,50 X 27 X 3,00 FLAT WASHER		02
07	0591014152	FRONT CURRENT PROTECTION ROD		01
08	0591014153	FRONT CURRENT PROTECTION BODY		01

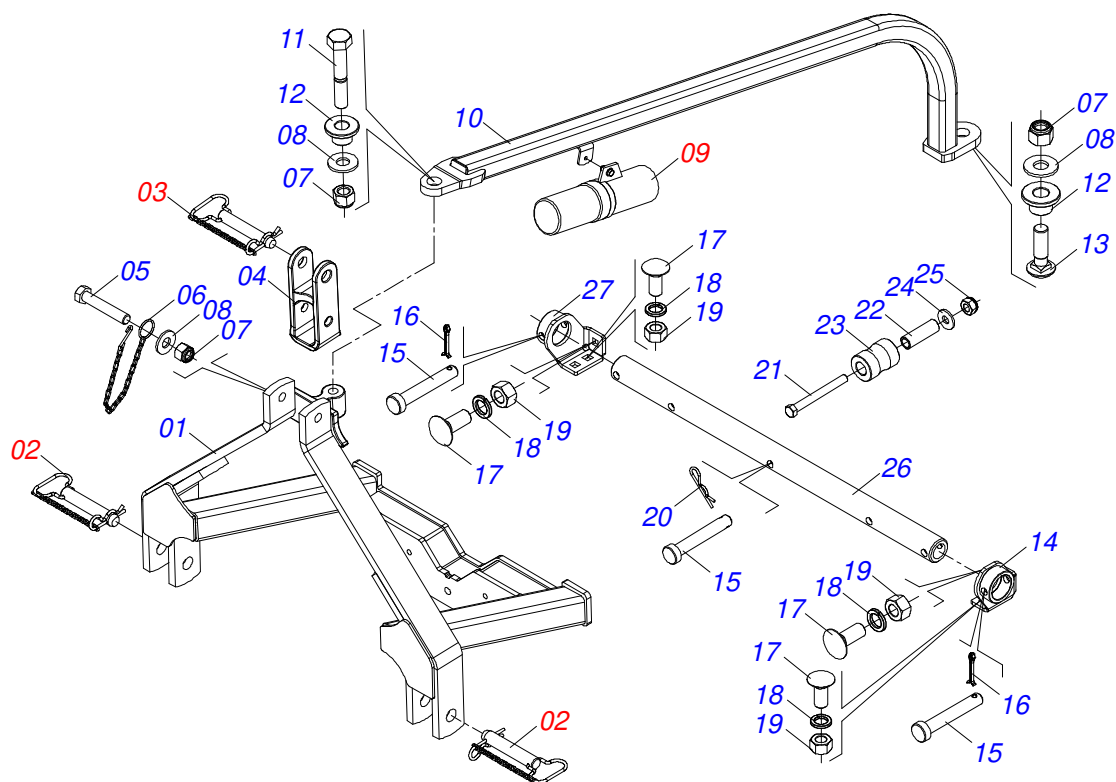


Item	Code	Description	See page	QT
01	0511017302	FLAT WASHER 13,50 X 32,50 X 3,0 ZN		02
02	0511011774	8,00 CHAIN 4 LINK		16
03	0503014378	1/2" X 1-1/2" BOLT		02
04	0503013759	NUT		02
05	0503010589	1/2" UNC SELF ADJUSTING NUT		02
06	0501010984	10,50 X 27 X 3,00 FLAT WASHER		02
07	0591014154	REAR SIDE CURRENT PROTECTION ROD 580		01
08	0591014155	BODY PROTECTION REAR SIDE CURRENT		01

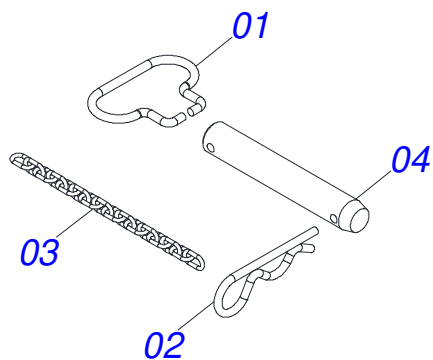


Item	Code	Description	See page	QT
01	0511017302	FLAT WASHER 13,50 X 32,50 X 3,0 ZN		02
02	0511011774	8,00 CHAIN 4 LINK		14
03	0503014378	1/2" X 1-1/2" BOLT		02
04	0503013759	NUT		02
05	0503010589	1/2" UNC SELF ADJUSTING NUT		02
06	0501010984	10,50 X 27 X 3,00 FLAT WASHER		02
07	0591014145	REAR CENTRAL CURRENT PROTECTION ROD 510		01
08	0591014144	BODY REAR CENTRAL CURRENT PROTECTION		01

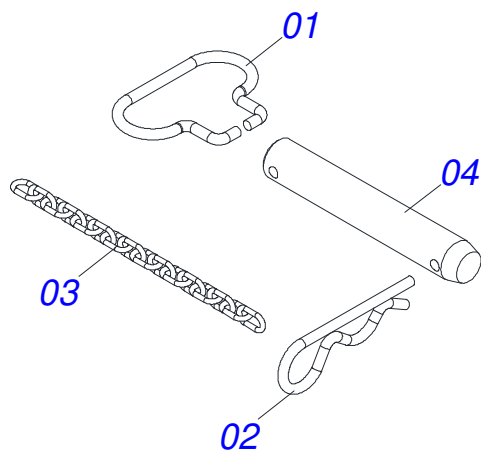
HEADER ASSY



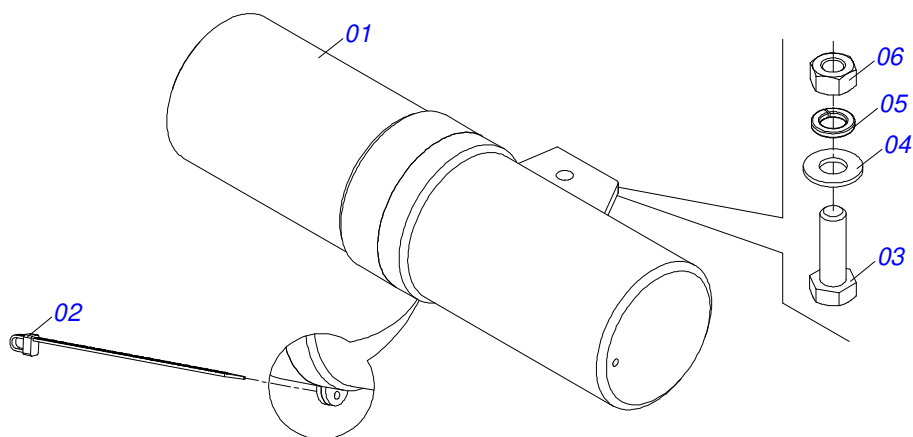
Item	Code	Description	See page	QT
01	0531061010	HEADER		01
02	0521054328	AXLE 27,80 X EC 130 ASSY	9	02
03	0521054135	AXLE 25,00 X EC 130 ASSY	10	01
04	1902040922	ROTARY COTTERS HEAD SUPPLEMENT		01
05	0501011545	3/4" X 6-1/2" BOLT		01
06	0503011981	17.7" CHAIN WITH HOOK/LINK		01
07	0503011075	3/4 UNC LOCK NUT		03
08	0501010104	FLAT WASHER 45 X 20 X 4		03
09	0521051872	DOOR ASSY INSTRUCTION MANUAL	11	01
10	0531061009	FRENCH HAND		01
11	0501010216	3/4 UNC X 4.1/2 C S G.5 ZN BOLT		01
12	0591014147	SIDE SUPPORT GUIDE SLEEVE		02
13	0503014249	3/4" X 2-1/2" BOLT		01
14	0531061002	LEFT HEADING TUBE BEARING		01
15	0551011714	COUPLING SHAFT		03
16	0503010131	3/16" X 1.1/2" SPLIT PIN		02
17	0503012407	5/8" X 1-1/2" BOLT		06
18	0503010027	5/8 SPRING WASHER		06
19	0503010013	5/8 UNC G.5 ZN HEX NUT		06
20	0503030168	HITCH PIN CLIP		01
21	0503010723	7/16UNC X 4 C SG.5 ZN1K19920 BOLT		02
22	0591014142	HEADER REEL SPACER		02
23	0591014143	NYLON HEADER REEL		02
24	0501012803	FLAT WASHER 12 X 30 X 3,00 ZN		02
25	0503015490	SELF-LOCKING NUT 7/16		02
26	0591014146	HEAD FIXATION TUBE		01
27	0531061003	RIGHT BEARING HEADING TUBE		01



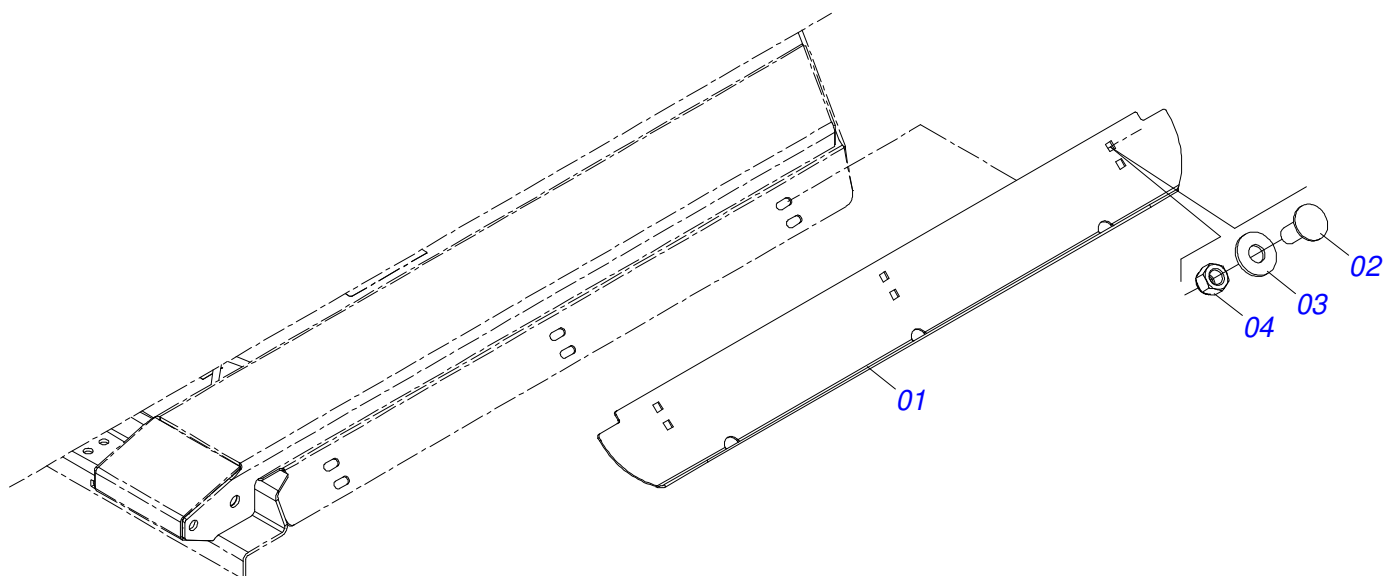
Item	Code	Description	See page	QT
01	0503034755	HANDLE PIN HITCH		01
02	0503031035	HITCH PIN CLIP		01
03	0503034756	3,00 X 16 CHAIN		01
04	0581018636	AXIS 27,80 X 155 X EC 130 FR 7,14		01



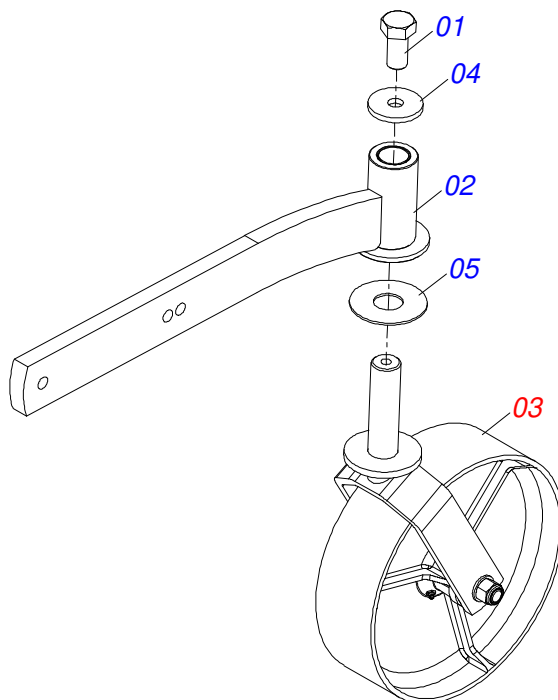
Item	Code	Description	See page	QT
01	0503034755	HANDLE PIN HITCH		01
02	0503031035	HITCH PIN CLIP		01
03	0503034756	3,00 X 16 CHAIN		01
04	0581018637	AXIS 25 X 155 X EC 130 FR 7,14		01



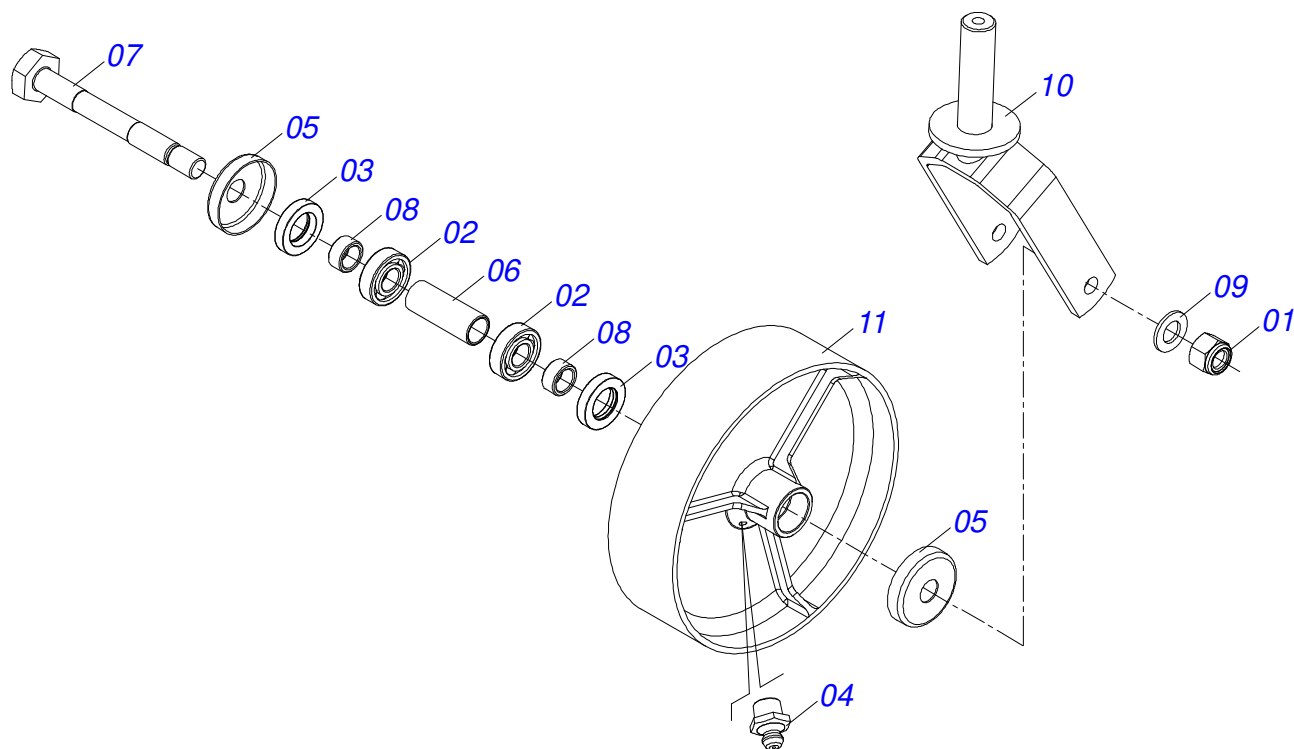
Item	Code	Description	See page	QT
01	0503060100	SUPPORT INSTRUCTION MANUAL		01
02	0503010267	NYLON CLAMP 3,60 X 1,3 X 155 MM		01
03	0503010363	BOLT 5/16 UNC X 1 C S G.2 ZN		01
04	0501010694	FLAT WASHER 32,50 X 75 X 4,75		01
05	0503010179	LOCK WASHER 5/16 ZN 1K01528		01
06	0503010337	NUT 5/16 UNC G.5 ZN		01



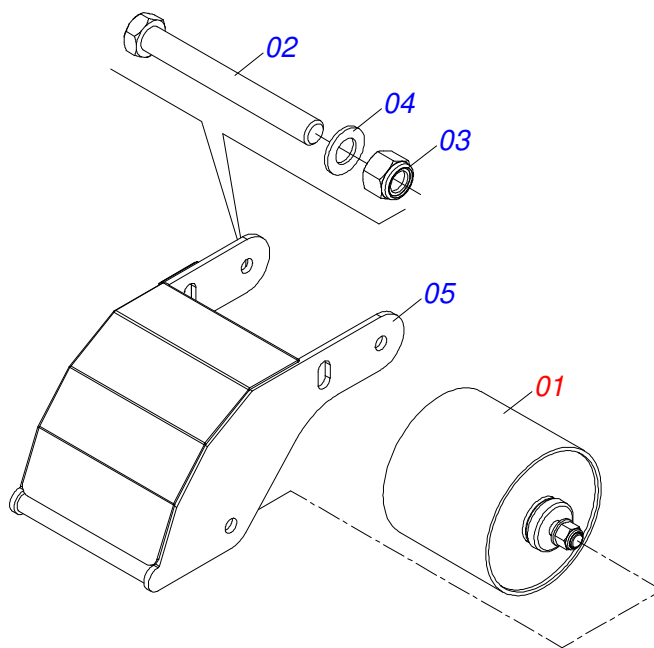
Item	Code	Description	See page	QT
01	0591014166	SIDE PROTECTION		02
02	0503014734	BOLT		12
03	0511017302	FLAT WASHER 13,50 X 32,50 X 3,0 ZN		12
04	0503010589	1/2" UNC SELF ADJUSTING NUT		12



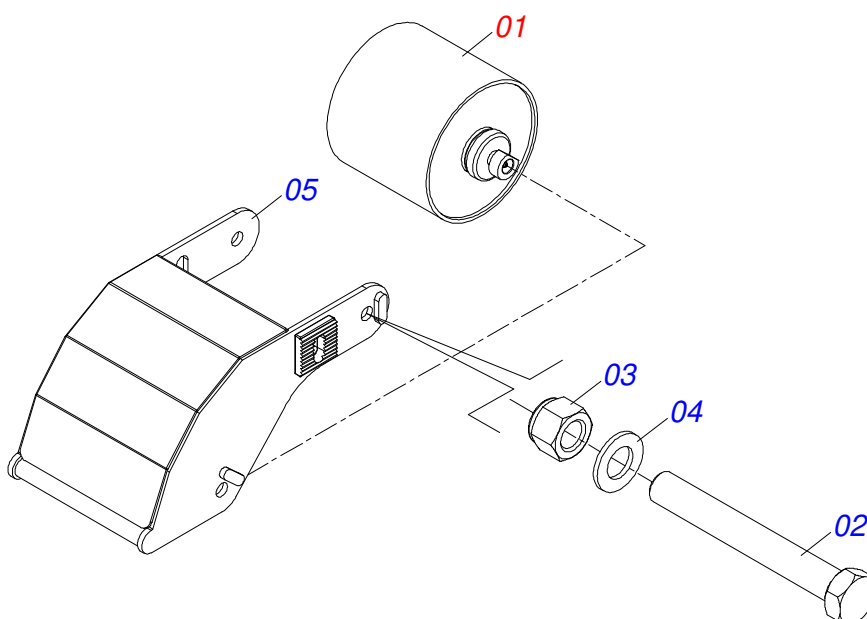
Item	Code	Description	See page	QT
01	0503010962	5/8" X 1-1/4" BOLT		01
02	0501111029	SWIVEL WHEEL ARM WITH GLOVE		01
03	0501058460	CARRYING WHEELS	14	01
04	0511010721	FLAT WASHER		01
05	0511013239	FLAT WASHER		01



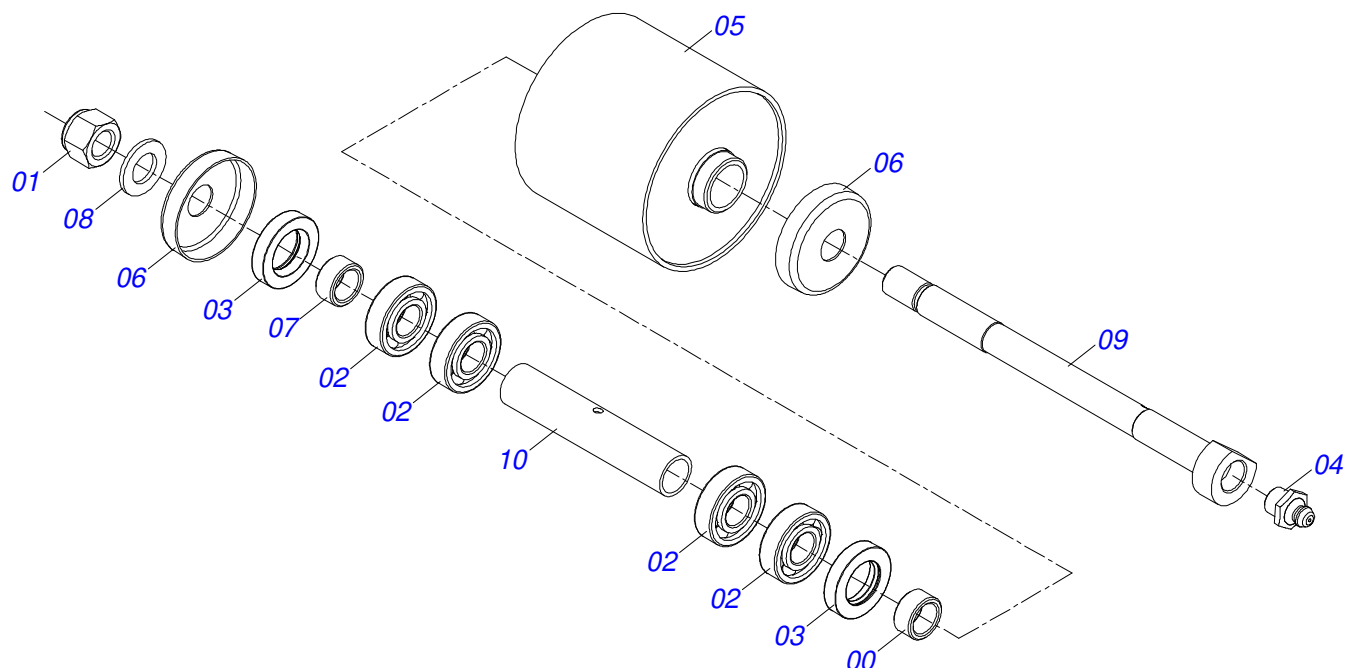
Item	Code	Description	See page	QT
01	0503011075	3/4 UNC LOCK NUT		01
02	0503010269	6204 BALL BEARING		02
03	0503010268	00262-B SEAL		02
04	0503010002	1800 GREASE FITTING		01
05	0511014254	DUST CLOAK		02
06	0521010460	0.9" X 1.1" X 2.9" SLEEVE		01
07	0501017143	WHEEL AXLE		01
08	0521010487	SPACER WASHER		02
09	0501010941	FLAT WASHER		01
10	0501065266	WHELL FORK		01
11	0502012519	350 X 100 WHEEL		01



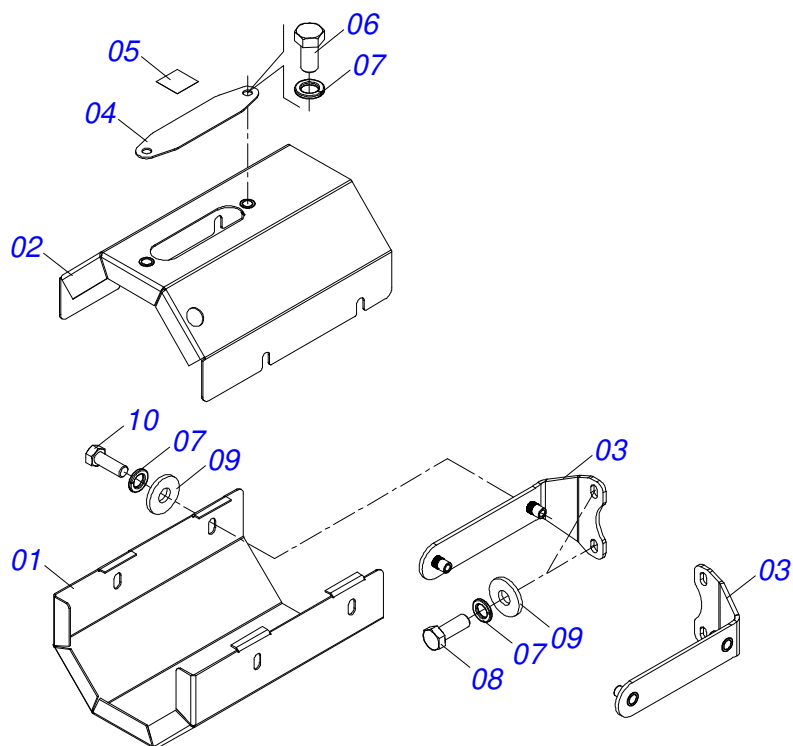
Item	Code	Description	See page	QT
01	0521058163	FRONT WHEEL 202 WITHOUT ARM	17	01
02	0503012951	3/4" X 10-1/2" BOLT		01
03	0503011075	3/4 UNC LOCK NUT		01
04	0501010941	FLAT WASHER		01
05	0531061006	RIGHT FRONT WHEEL SUPPORT		01
06	1882970002	GREASE		01



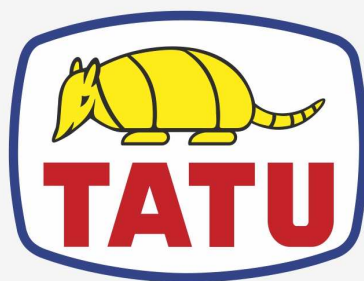
Item	Code	Description	See page	QT
01	0521058163	FRONT WHEEL 202 WITHOUT ARM	17	01
02	0503012951	3/4" X 10-1/2" BOLT		01
03	0503011075	3/4 UNC LOCK NUT		01
04	0501010941	FLAT WASHER		01
05	0531061005	LEFT FRONT WHEEL HOLDER WITH COVER		01
06	1882970002	GREASE		01



Item	Code	Description	See page	QT
01	0503011075	3/4 UNC LOCK NUT		01
02	0503010269	6204 BALL BEARING		04
03	0503010268	00262-B SEAL		02
04	0503010002	1800 GREASE FITTING		01
05	0531061007	FRONT WHEEL 202 X 180		01
06	0511014254	DUST CLOAK		02
07	0521010487	SPACER WASHER		02
08	0501010941	FLAT WASHER		01
09	0591019520	FRONT WHEEL AXLE		01
10	0531014502	0.9" X 1.1" X 6.3" SLEEVE		01



Item	Code	Description	See page	QT
01	0581011777	BODY LOWER PROTECTION COAT		01
02	0501110998	CARDAN TOP PROTECTION COVER		01
03	0501110997	LARGER SUPPORT COVER PROTECTION		02
04	0581012546	LUBRICATION AXIS TRANSMISSION		01
05	0503034247	LUBRICATION POINT DECAL		01
06	0503010256	3/8" X 3/4" BOLT		02
07	0503010025	3/8 SPRING WASHER		10
08	0503010237	3/8" X 1" BOLT		04
09	0501010984	10,50 X 27 X 3,00 FLAT WASHER		08
10	0503010751	C3/8" X 1.1/4" HEX BOLT G.5		04



MARCHESAN

Technical Publications | Elaboration and Revision

ALESSANDRA PATRICIA KAWAHARA CARRILI

www.marchesan.com.br

