

OFFSET DISK HARROW

GAPCR 360 - 16/18D - AXIS 2.1/8"

Code: 0501093126
Series: S-0921
Revision: 00
Date Revision: FEVEREIRO/2023

PARTS CATALOGUE



MARCHESAN

PRODUCTS



Code	Description
0102060363	GAPCR 360 16X34X9,0 DR DMO E 2.1/8 PN11L15 S-0921
0102060361	GAPCR 360 16X34X9,0 DR DMO E 2.1/8 PN400/60 S-0921
0102060362	GAPCR 360 18X34X9,0 DR DMO E 2.1/8 PN400/60 S-0921

ATTENTION: IMPORTANT

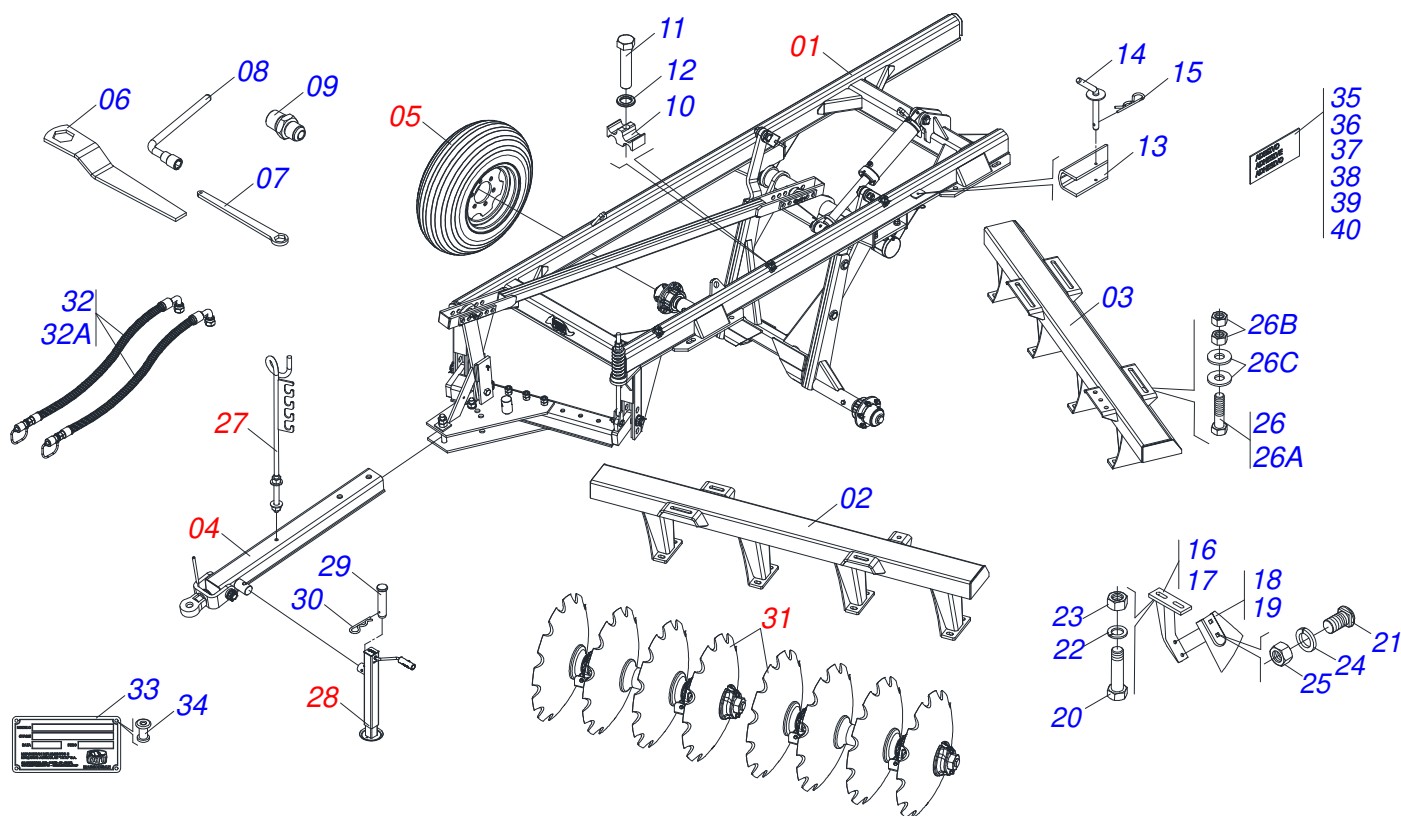
Marchesan S.A. reserves the right to improve and/or modify the technical features of its products, without obligation to do the same with those products already sold and without prior knowledge of the dealer or the customer. The photos are only illustrative.

INDEX

0909095977	ASSY FRAME	1
0511049502	FRAME ASSY - 12A18D-400/60	2
0511049759	FRAME ASSY - 12A18D-11L15	3
0521045051	WHEELS ASSY	4
0521044885	WHEEL ASSY	5
0501055850	CARRYNG WHEEL HUB ASSEMBLY ASSY	6
0501054685	WHEELS HUB ASSY	7
0501048562	HYDRAULIC CYLINDER 53,98X101,6X630X300	8
0511050170	HARNESS ASSY	9
0503061868	400/60 WHEEL WITH TIRE	10
0503061864	WHEEL SET	11
0501040257	3/4 X 1200 HOSE HOLDER A	12
0511048088	DRAWBAR JACK	13
0909095980	SECTION DISQUE	14
0531041578	AGRICULTURAL BEARING DM OL 360 X 2.1/8 SWINGING WITH SUPPORT	16
0531052835	AGRICULTURAL BEARING DM OL 360 X 2.1/8 SWING	17

ASSY FRAME

0909095977

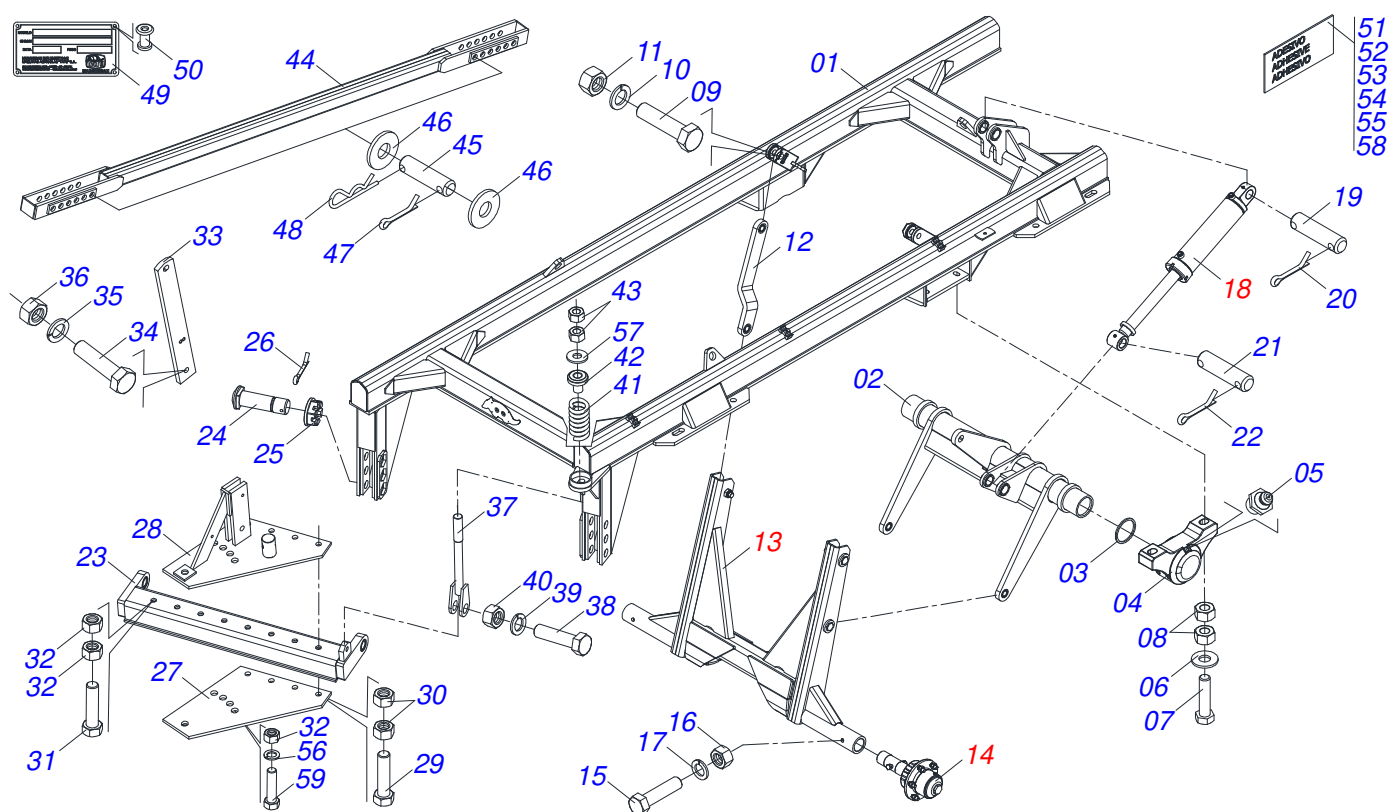


Item	Code	Description	See page	016	018
01	0511049502	FRAME ASSY - 12A18D-400/60	2	001	001
01.	0511049759	FRAME ASSY - 12A18D-11L15	3	001	000
02	0531062910	FRAME ASSY - 18		000	001
02.	0531062912	FRONT CHASSIS - 16		001	000
03	0531062911	REAR CHASSIS - 18		000	001
03.	0531062913	REAR CHASSIS - 16		001	000
04	0511050170	HARNESS ASSY	9	001	001
05	0503061868	400/60 WHEEL WITH TIRE	10	000	001
05.	0503061864	WHEEL SET	11	001	000
06	0501011431	1-3/4" GANG BOLT WRENCH		002	002
07	0531013656	WRENCH		001	001
08	0503018438	1" WRENCH CYLINDRICAL HEX		001	001
09	0551012528	ADAPTER (GND)		002	002
10	0502012702	BODY SUPPORT CLAMP		003	003
11	0503012555	SCREW 7/16 UNC X 2 CS RT G.7 ZN		003	003
12	0503010180	7/16" SPRING WASHER		003	003
13	0521013685	LOCK PISTON		001	001
14	0511060137	ASSEMBLY LOCK PIN		001	001
15	0503030012	HITCH PIN CLIP		001	001
16	0511060138	FRONT CLEANER SUPPORT		009	008
17	0511060139	REAR CLEANER SUPPORT		009	008
18	0521013678	FRONT CLEANER		009	008
19	0521013679	REAR CLEANER		009	008
20	0503012180	FRENCH 3/4" X 2 BOLT		036	032
21	0503012195	5/8" NUT		036	032
22	0503010023	3/4" SPRING WASHER		036	032
23	0503012183	SNC 3/4" ZIN 1K03097 NUT		036	032
24	0503010027	5/8 SPRING WASHER		036	032
25	0503010013	5/8 NUT		036	032
26	0531041590	1 X 4 C S COMPLETE SCREW ASSEMBLY		008	008
26A	0503011432	BOLT		008	008

ASSY FRAME

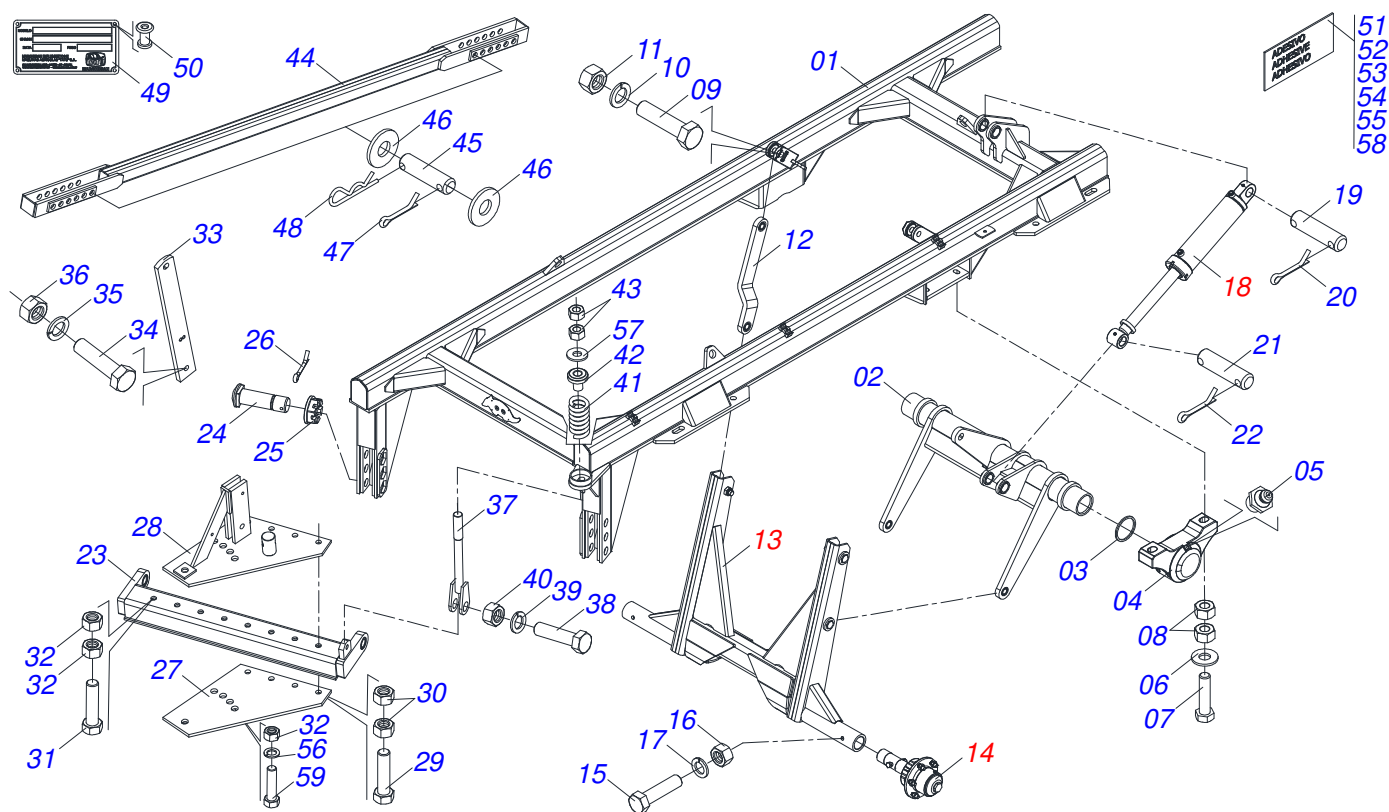
0909095977

Item	Code	Description	See page	016	018
26B	0503012182	1" NUT		016	016
26C	0521015523	BOOST		016	016
27	0501040257	3/4 X 1200 HOSE HOLDER A	12	001	001
28	0511048088	DRAWBAR JACK	13	001	001
29	0561014251	COUPLING SHAFT		001	001
30	0503030012	HITCH PIN CLIP		001	001
31	0909095980	SECTION DISQUE	14	016	018
32	0511050954	HOSE GAME		001	001
32A	0501080640	3/8 X 7200 TC-TM HOSE		002	002
33	0503034003	SERIAL NUMBER TAG 61 X 118		001	001
34	0503010001	3.2 X 5.5 RIVET		004	004
35	0503031428	READ MANUAL DECAL		001	001
36	0503031738	ADHESIVE LABEL		001	001
37	0503033038	DANGER SIGN		002	002
38	0503031087	ADHESIVE LABEL		001	001
39	0503061972	GAPCR 360 DECAL SET		001	001
40	0503031739	ADHESIVE LABEL		001	001
41	0511030134	BAG WITH INSTRUCTION MANUAL		001	001



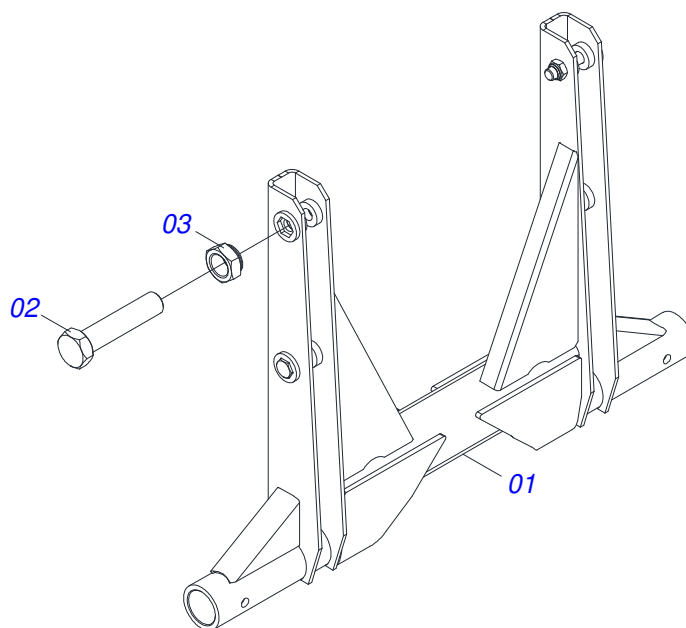
Item	Code	Description	See page	QT
01	0521064430	FRAME		01
02	0511060135	WHEELS AXLE		01
03	0503012223	FELT RING		02
04	0502011583	BEARING AXLE		02
05	0503010002	1800 GREASE FITTING		02
06	0521013710	WASHER SEMIMAN		04
07	0503010797	3/4" X 4" BOLT		04
08	0503012183	SNC 3/4" ZIN 1K03097 NUT		08
09	0503011432	BOLT		02
10	0503011438	SPRING WASHER		02
11	0503012182	1" NUT		02
12	0511063681	ARM		02
13	0521045051	WHEELS ASSY	4	01
14	0501055850	CARRYNG WHEEL HUB ASSEMBLY ASSY	6	02
15	0503011084	3/4" X 5" BOLT		02
16	0503010014	3/4" HEX NUT		02
17	0503011442	3/4" SPRING WASHER		02
18	0501048562	HYDRAULIC CYLINDER 53,98X101,6X630X300	8	01
19	0521013707	HEADLESS PIN		01
20	0503010010	1/4" X 2.1/2" COTTERPIN		02
21	0521013706	HEADLESS PIN		01
22	0503010010	1/4" X 2.1/2" COTTERPIN		02
23	0511060115	DRAWBAR		01
24	0501016416	1-1/2" X 5.4" BOLT		02
25	0501011301	1.1/2 UNC 6FPP 2.5/16 NUT		02
26	0503010010	1/4" X 2.1/2" COTTERPIN		02
27	0511060125	BOTTOM PLATE HITCH		01
28	0511060126	TOP PLATE HITCH		01
29	0501010219	1" X 7-1/2" BOLT		04
30	0503012182	1" NUT		08
31	0503012192	1-1/4" X 8 BOLT		01

Item	Code	Description	See page	QT
32	0503012181	1.1/4" NUT		03
33	0521013673	TOWER		01
34	0503011432	BOLT		01
35	0503011438	SPRING WASHER		01
36	0503012182	1" NUT		01
37	0511060124	ASSEMBLY TIME		01
38	0501010125	3/4" X 2-1/2" BOLT		01
39	0503011442	3/4" SPRING WASHER		01
40	0503012183	SNC 3/4" ZIN 1K03097 NUT		01
41	0503031460	SPRING		01
42	0502011582	SPINDLE GUIDE		01
43	0503012182	1" NUT		02
44	0511060127	BEAM STABILIZER		01
45	0521013703	PIN FREE HEAR		02
46	0521015518	BOOST		04
47	0503010038	3/16 X 2 COTTERPIN		02
48	0503031470	TM 251 X 4,0 STAPLE		02
49	0503034003	SERIAL NUMBER TAG 61 X 118		01
50	0503010001	3.2 X 5.5 RIVET		04
51	0503031428	READ MANUAL DECAL		01
52	0503031738	ADHESIVE LABEL		01
53	0503033038	DANGER SIGN		02
54	0503031087	ADHESIVE LABEL		01
55	0503061972	GAPCR 360 DECAL SET		01
56	0503010070	SPRING WASHER		01
57	0551012215	FLAT WASHER		02
58	0503031739	ADHESIVE LABEL		01
59	0501814174	BOLT		01

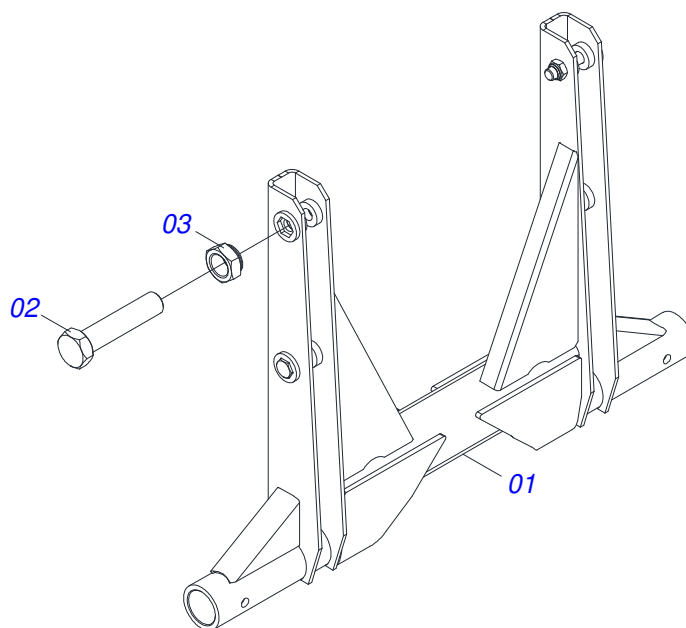


Item	Code	Description	See page	QT
01	0521064430	FRAME		01
02	0511060135	WHEELS AXLE		01
03	0503012223	FELT RING		02
04	0502011583	BEARING AXLE		02
05	0503010002	1800 GREASE FITTING		02
06	0521013710	WASHER SEMIMAN		04
07	0503010797	3/4" X 4" BOLT		04
08	0503012183	SNC 3/4" ZIN 1K03097 NUT		08
09	0503011432	BOLT		02
10	0503011438	SPRING WASHER		02
11	0503012182	1" NUT		02
12	0511063681	ARM		02
13	0521044885	WHEEL ASSY	5	01
14	0501054685	WHEELS HUB ASSY	7	02
15	0501010163	5/8" X 4-1/2" BOLT		02
16	0503010013	5/8 NUT		02
17	0503010027	5/8 SPRING WASHER		02
18	0501048562	HYDRAULIC CYLINDER 53,98X101,6X630X300	8	01
19	0521013707	HEADLESS PIN		01
20	0503010010	1/4" X 2.1/2" COTTERPIN		02
21	0521013706	HEADLESS PIN		01
22	0503010010	1/4" X 2.1/2" COTTERPIN		02
23	0511060115	DRAWBAR		01
24	0501016416	1-1/2" X 5.4" BOLT		02
25	0501011301	1.1/2 UNC 6FPP 2.5/16 NUT		02
26	0503010010	1/4" X 2.1/2" COTTERPIN		02
27	0511060125	BOTTOM PLATE HITCH		01
28	0511060126	TOP PLATE HITCH		01
29	0501010219	1" X 7-1/2" BOLT		04
30	0503012182	1" NUT		08
31	0503012192	1-1/4" X 8 BOLT		01

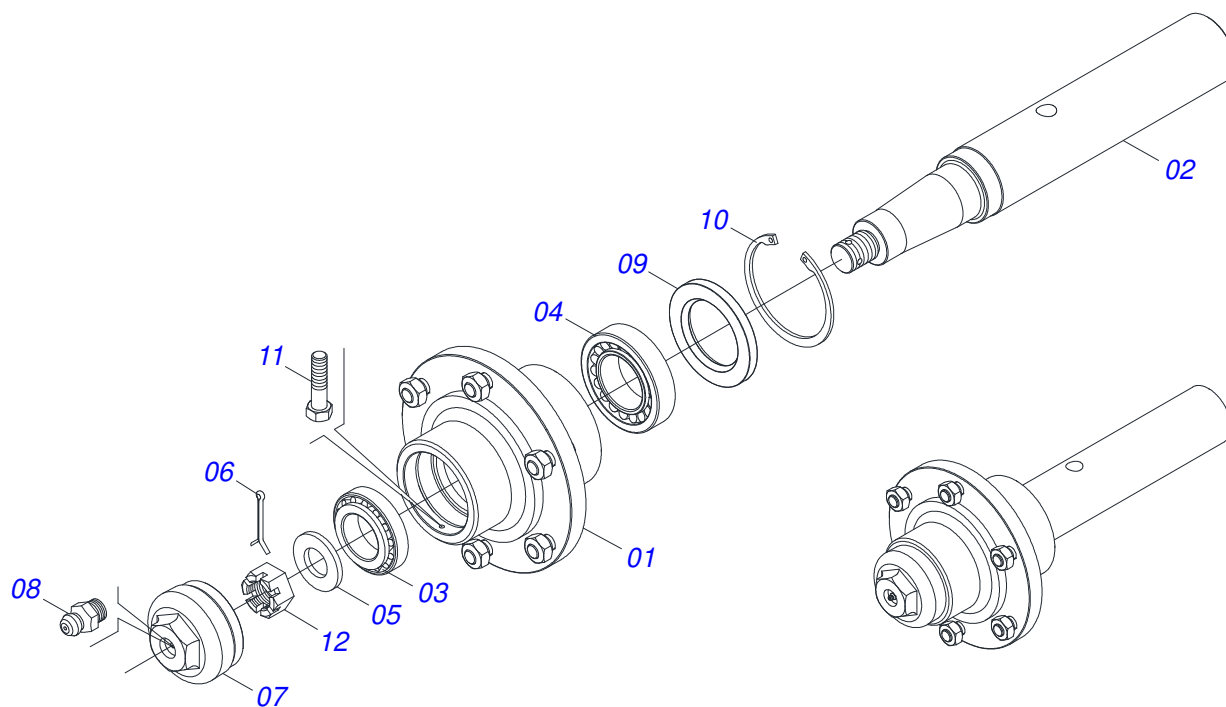
Item	Code	Description	See page	QT
32	0503012181	1.1/4" NUT		03
33	0521013673	TOWER		01
34	0503011432	BOLT		01
35	0503011438	SPRING WASHER		01
36	0503012182	1" NUT		01
37	0511060124	ASSEMBLY TIME		01
38	0501010125	3/4" X 2-1/2" BOLT		01
39	0503011442	3/4" SPRING WASHER		01
40	0503012183	SNC 3/4" ZIN 1K03097 NUT		01
41	0503031460	SPRING		01
42	0502011582	SPINDLE GUIDE		01
43	0503012182	1" NUT		02
44	0511060127	BEAM STABILIZER		01
45	0521013703	PIN FREE HEAR		02
46	0521015518	BOOST		04
47	0503010038	3/16 X 2 COTTERPIN		02
48	0503031470	TM 251 X 4,0 STAPLE		02
49	0503034003	SERIAL NUMBER TAG 61 X 118		01
50	0503010001	3.2 X 5.5 RIVET		04
51	0503031428	READ MANUAL DECAL		01
52	0503031738	ADHESIVE LABEL		01
53	0503033038	DANGER SIGN		02
54	0503031087	ADHESIVE LABEL		01
55	0503061972	GAPCR 360 DECAL SET		01
56	0503010070	SPRING WASHER		01
57	0551012215	FLAT WASHER		02
58	0503031739	ADHESIVE LABEL		01
59	0501814174	BOLT		01



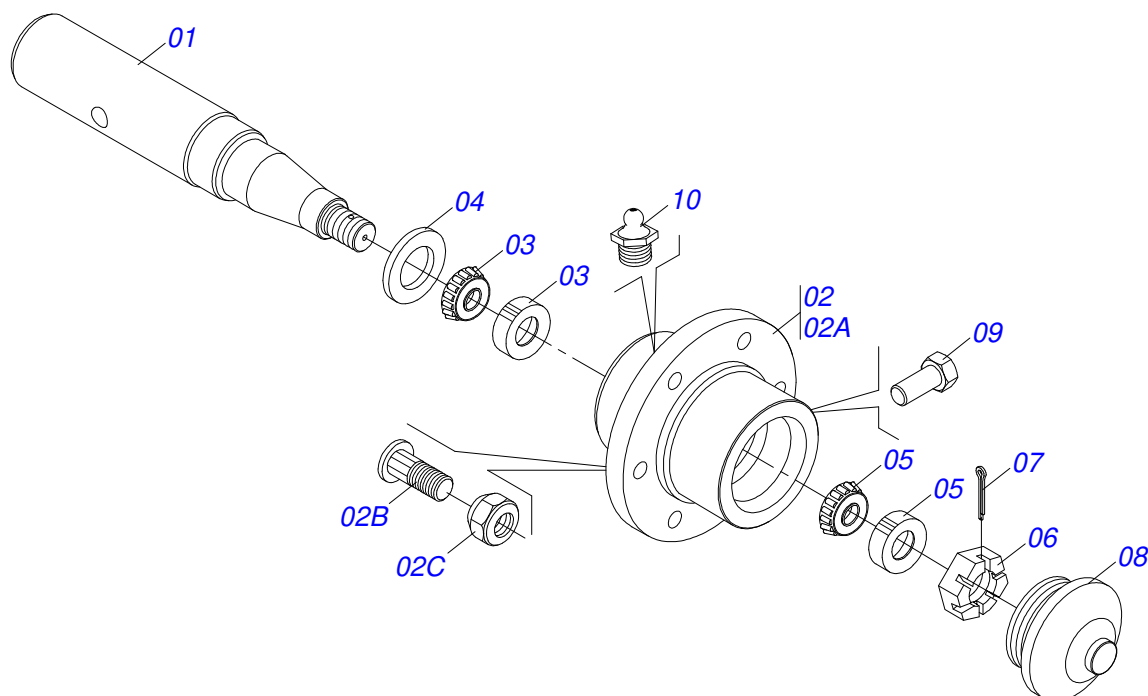
Item	Code	Description	See page	QT
01	0511068626	ASSEMBLY CARRYING-WHEELS		01
02	0501011547	1" X 4-1/2" BOLT		04
03	0503014182	SELF-ADJUSTING NUT		04



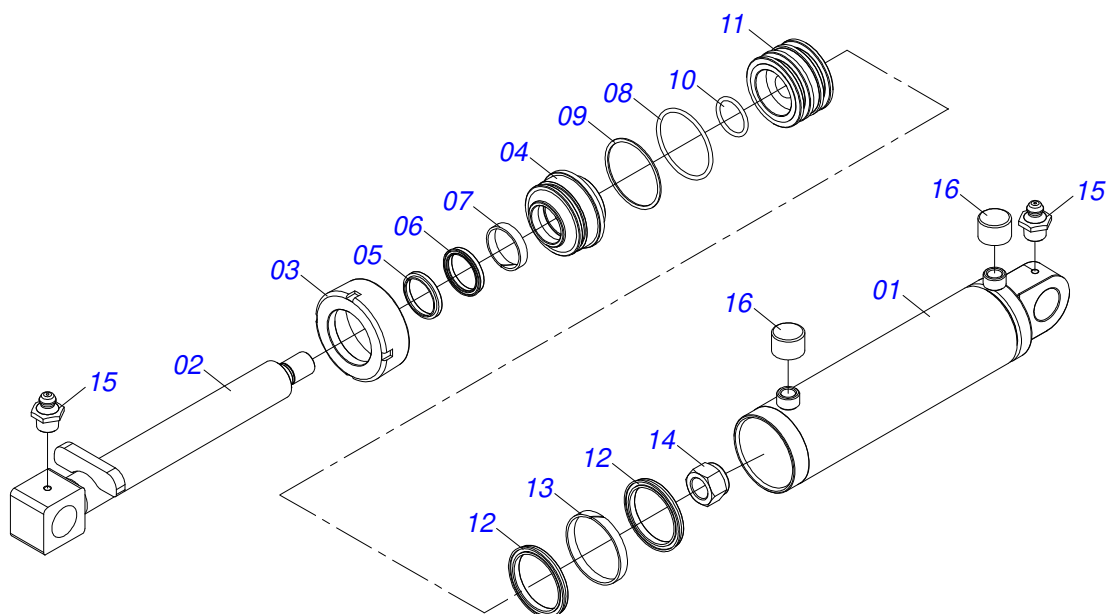
Item	Code	Description	See page	QT
001	0511060141	WHEEL ASSEMBLY		01
002	0501011547	1" X 4-1/2" BOLT		04
003	0503014182	SELF-ADJUSTING NUT		04



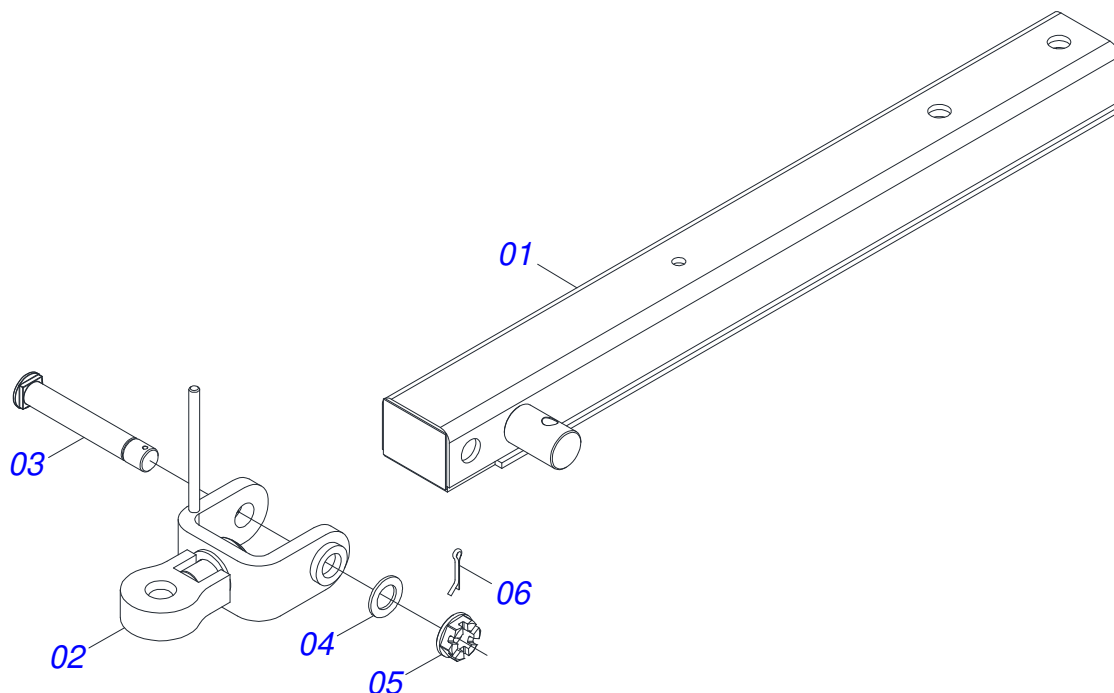
Item	Code	Description	See page	QT
01	0501110766	HUB CARRYING WHEELS WITH BOLT		01
02	0541014720	CR 7076205/1/1 AXLE		01
03	0503010006	32210 ROLLER BEARING		01
04	0503010005	32212 ROLLER BEARING		01
05	0501010086	FLAT WASHER		01
06	0503010067	3/16" X 2.1/2" COTTER PIN		01
07	0502011647	COVER		01
08	0503010691	1/4" GREASE FITTING		01
09	0503010009	RETAINER 00573-B		01
10	0503012723	502115 RENO RING		01
11	0503010298	1/4" X 1/2" BOLT		01
12	0503012457	UNF 1.1/4" CASTLE NUT		01



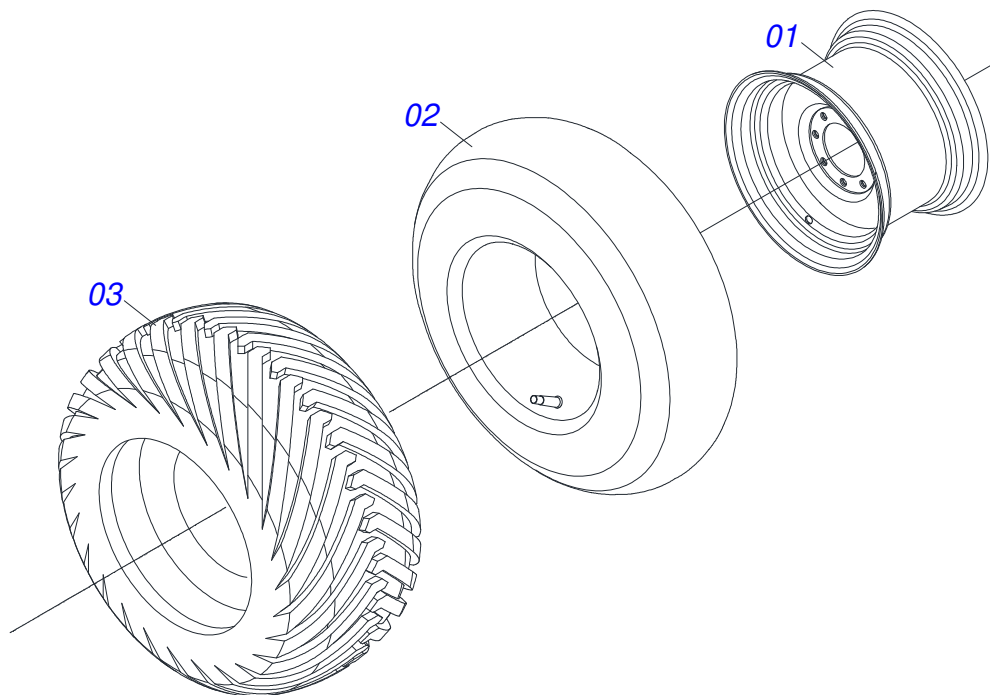
Item	Code	Description	See page	QT
01	0531019478	CR 30M/1 AXLE		01
02	0501110768	HUB CARRYING WHEELS WITH BOLT		01
02A	0502011389	BOX		01
02B	0501010186	WHEEL SCREW 5/8UNF X 2.1/8CR		06
02C	0503010064	5/8 UNF CONIC NUT		06
03	0503010005	32212 ROLLER BEARING		01
04	0503010009	RETAINER 00573-B		01
05	0503010006	32210 ROLLER BEARING		01
06	0501010888	1.3/4" 2.5/16" CASTLE NUT		01
07	0503010010	1/4" X 2.1/2" COTTERPIN		01
08	0502020593	COVER		01
09	0503010295	SCREW 5/16 UNC X 5/8 CS G.2 ZN		01
10	0503010002	1800 GREASE FITTING		01



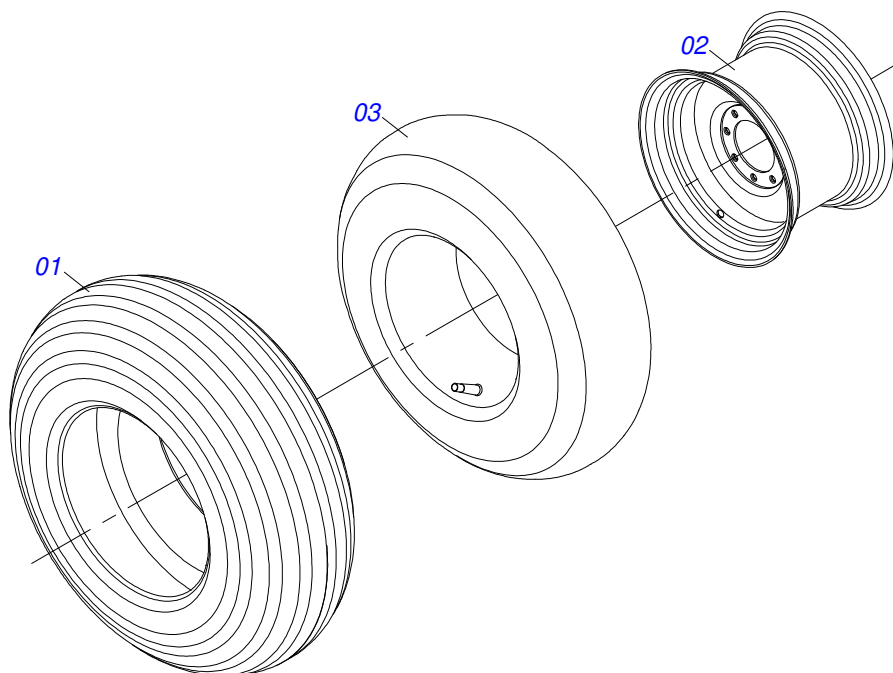
Item	Code	Description	See page	QT
01	0511062252	101,6 X 418 CYLINDER CASE		01
02	0511062250	53,98 X 509 TURNBUCLE		01
03	0502010017	4" HEAD		01
04	0502011250	RING OF SUPPORT		01
05	0503010319	D-2125 SCRAPER		01
06	0503010314	GASKET		01
07	0503010973	W2-2500-500 PK O'RING G.E		01
08	0503011061	8-342 BACK-UP RING		01
09	0503010338	2-342 N 3006-9B O'RING		01
10	0503010345	2-218 N 3006-9B O'RING		01
11	0502011969	53,98 X 101,60 PISTON		01
12	0503010043	PACKING 3750-3250		02
13	0503010994	W2-4000-500 PK RING G.E		01
14	0503010817	1.1/4" SELF LOCKING NUT		01
15	0503010002	1800 GREASE FITTING		02
16	0503030384	CON PLUG N-001		02



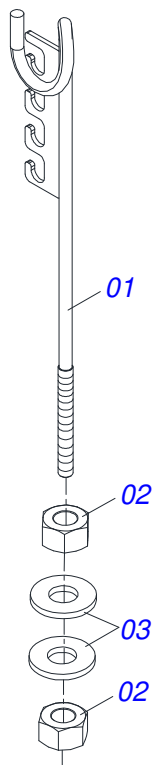
Item	Code	Description	See page	QT
01	0511060119	HARNESS		01
02	0521062956	HITCH		01
03	0561018588	COUPLING SHAFT		01
04	0501011301	1.1/2 UNC 6FPP 2.5/16 NUT		01
05	0501012916	FLAT WASHER 40 X 66 X 4,75 ZN		01
06	0503010010	1/4" X 2.1/2" COTTERPIN		01



Item	Code	Description	See page	QT
01	0503012916	W-13 X 16,5 HOOP WHEEL		01
02	0503012112	400/60 - 15.5 TR 15 INNER TIRE		01
03	0503013119	CANVAS TIRE		01



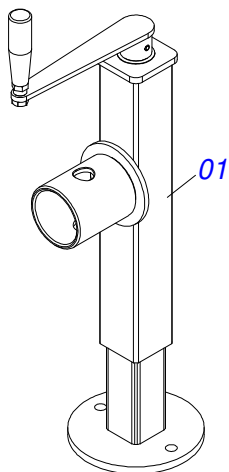
Item	Code	Description	See page	QT
01	0503011469	RIB TIRE BL - 12L		01
02	0511064777	CR 30M/2-L15 WHEEL		01
03	0503010860	AIR CHAMBER 11L 15		01



Item	Code	Description	See page	QT
01	0511067334	HOSE SUPPORT		01
02	0503010014	3/4" HEX NUT		02
03	0501010322	FLAT WASHER		02

DRAWBAR JACK

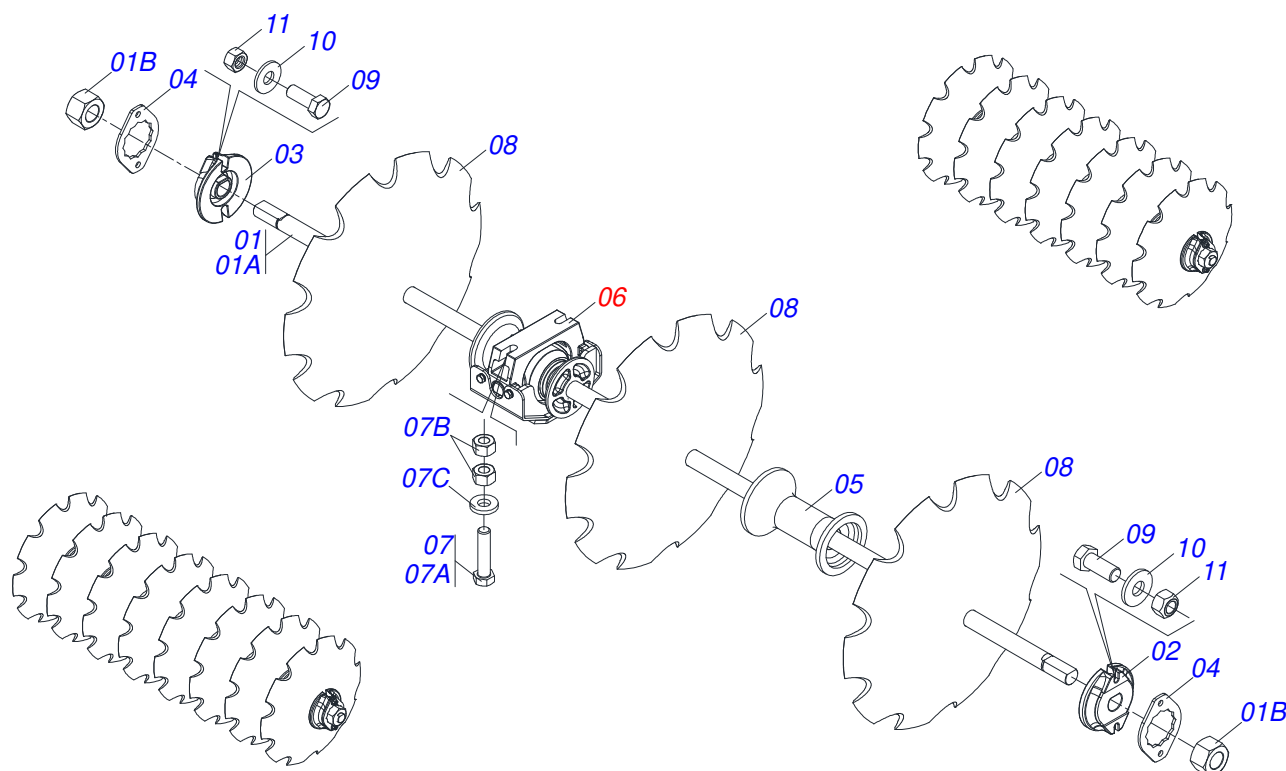
0511048088



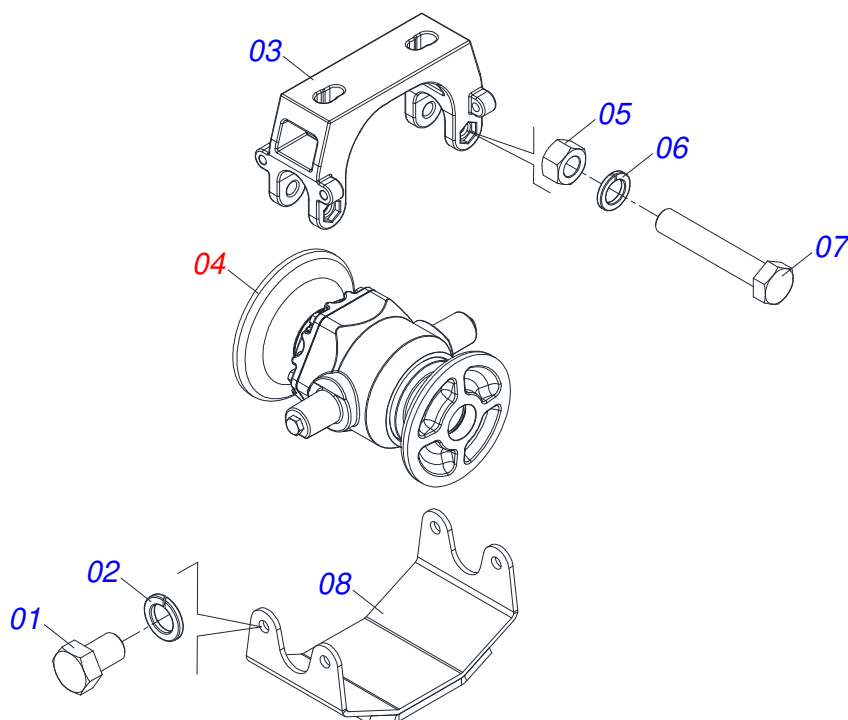
Item	Code	Description	See page	QT
01	0503062227	DRAWBAR JACK		01

SECTION DISQUE

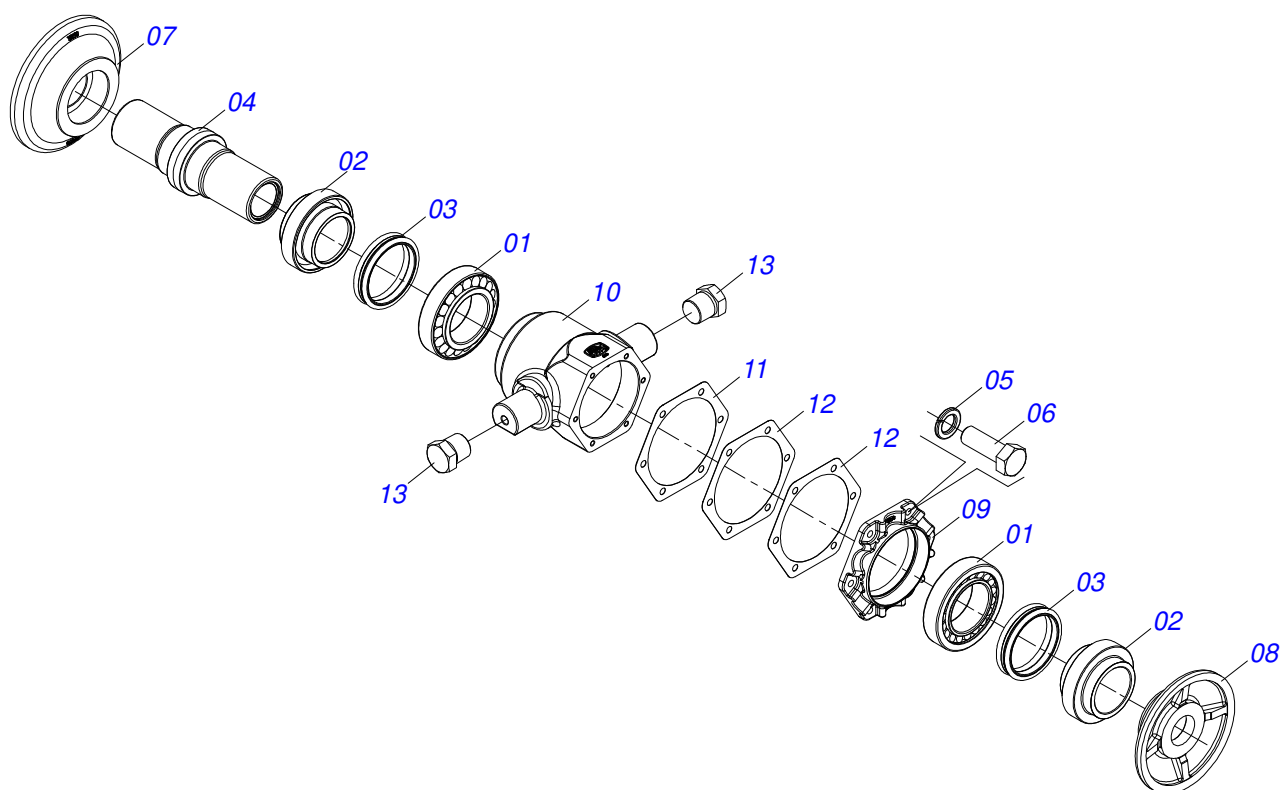
0909095980



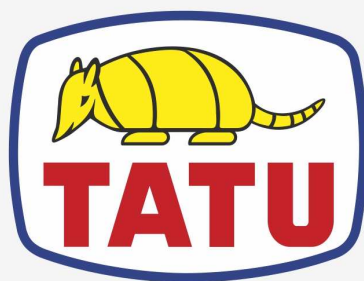
Item	Code	Description	See page	016	018
01	0531041580	2.1/8 X 1322 SHAFT WITH NUTS		004	004
01A	0501210542	AXIS 2.1/8 X 1322		004	004
01B	0502040063	2-1/8" X 54 99 NUT		002	002
02	0502010595	2-1/8" INNER AXLE WASHER		004	004
03	0502010594	2-1/8" EXTERNAL AXLE WASHER		004	004
04	0541010368	NUT LOCK		008	008
05	0502040928	SEPARATOR		006	006
06	0531041578	AGRICULTURAL BEARING DM OL 360 X 2.1/8 16 SWINGING WITH SUPPORT		008	008
07	0531041590	1 X 4 C S COMPLETE SCREW ASSEMBLY		016	016
07A	0503011432	BOLT		016	016
07B	0503012182	1" NUT		032	032
07C	0521015523	BOOST		016	016
08	0602046009	34 X 9 MM NOTCHED DISC		016	018
09	0503010232	5/8" X 1.3/4" BOLT		016	018
10	0501012140	FLAT WASHER		016	018
11	0503012412	5/8 UNC SELF LOCKING NUT		016	018



Item	Code	Description	See page	QT
01	0503010834	1/2 X 1 BOLT		04
02	0503010019	1/2" SPRING WASHER		04
03	0502013011	360 OSCILLATING BEARING SUPPORT (CENTRAL)		01
04	0531052835	AGRICULTURAL BEARING DM OL 360 X 2.1/8 17 SWING		01
05	0503010013	5/8 NUT		02
06	0503010027	5/8 SPRING WASHER		02
07	0503010480	5/8" X 4.3/4" BOLT		02
08	0501210530	SWING BEARING COVER		01



Item	Code	Description	See page	QT
01	0503010117	32216 ROLLER BEARING	02	
02	0502040123	SEAL RETAINER	02	
03	0503030028	JB-257 SEAL	02	
04	0502040034	BEARING AXLE	01	
05	0503011443	3/8" SPRING WASHER	06	
06	0503010751	C3/8" X 1.1/4" HEX BOLT G.5	06	
07	0501211750	EXTERNAL DISC BACKREST 2.1/8	01	
08	0501211749	INTERNAL BACKREST DISC 2.1/8	01	
09	0502012772	BEARING COVER	01	
10	0502013012	OSCILLATING AGRICULTURAL BEARING BOX 2.1/8	01	
11	0503034044	JOINT	01	
12	0503034045	JOINT	02	
13	0503010856	OIL PLUG	02	
14	3402301275	TATU OIL	0.6Lt	



MARCHESAN

Technical Publications | Elaboration and Revision

LUIZ CANDIDO

www.marchesan.com.br

