

PD - FRONT LOADER

PD VTR A750/950 BT SC

Code: 0501093050
Series: S-1014
Revision: 00
Date Revision: SETEMBRO/2021

PARTS CATALOGUE



MARCHESAN

PRODUCTS



Code
0106020405

Description
PD VTR A750/950 BT SC

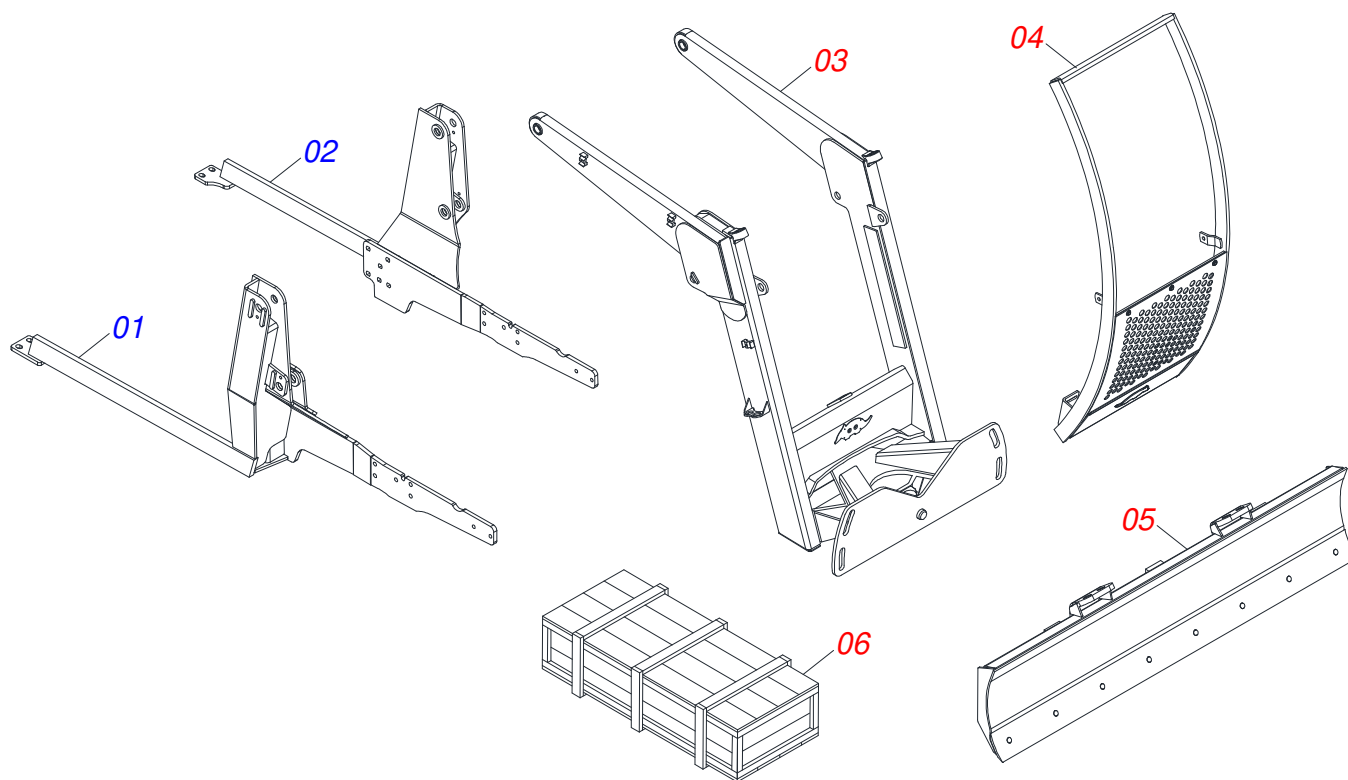
ATTENTION: IMPORTANT

Marchesan S.A. reserves the right to improve and / or modify the technical features of its products, without obligation to do the same with those products already sold and without prior knowledge of the dealer or the consumer.

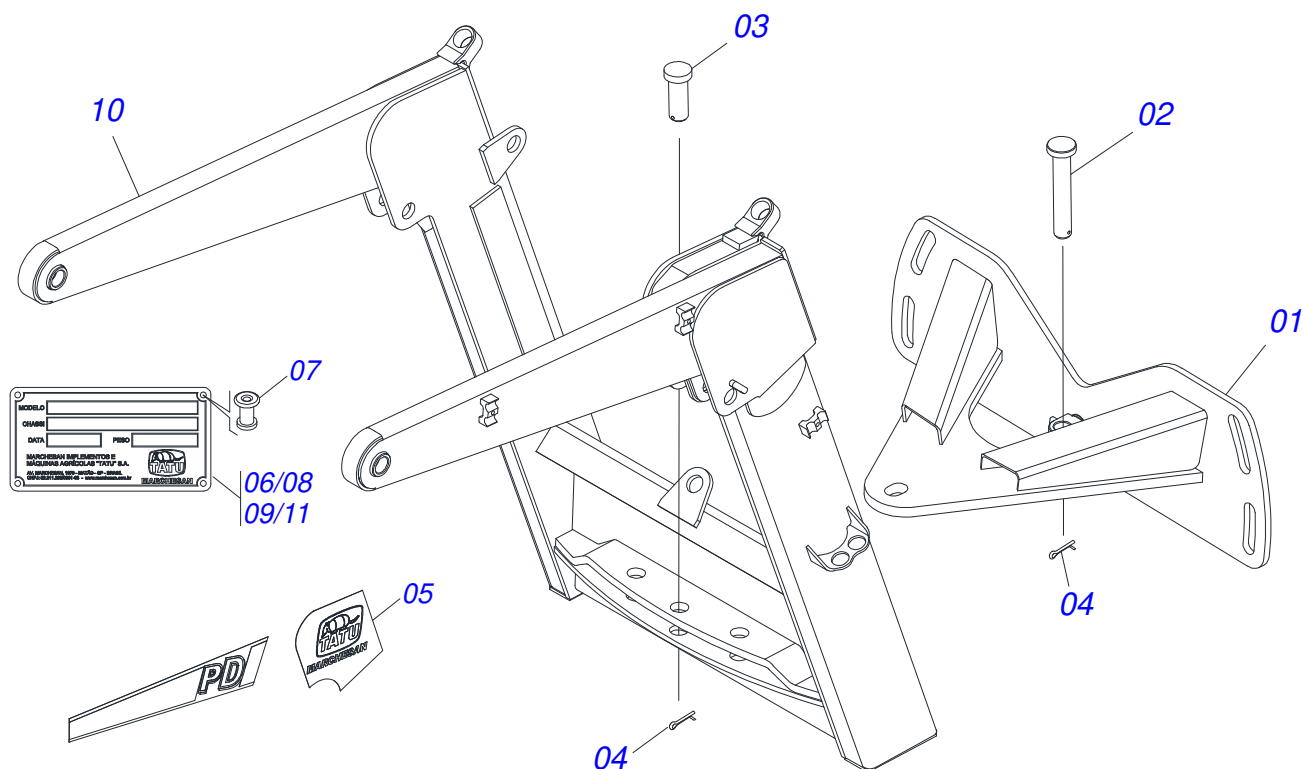


INDEX

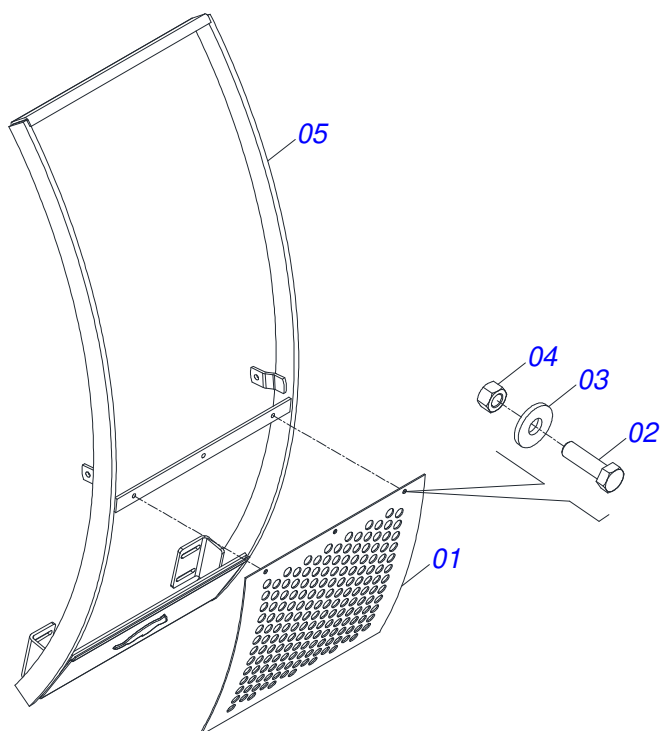
0106020405	PD VTR A750/950 BT SC	1
0511049953	MOBILE FULL SUPPORT	2
0511049956	MOBILE SUPPORT GUIDE ASSY	3
0501047708	2400 BLADE SUPPORT	4
0521021307	BOX WITH COMPONENTS	5
0501041427	1.1/4" NC X 1540 ASSY ROD	6
0511058454	HYDRAULIC CYLINDER	7
0511031587	PACKAGED PIECES	8
0511057771	R.7/8UNF - SAFETY VALVE	9
0501053834	MALE QUICK COUPLER WITH CAP - 1/2 NPT	10
0501053835	FEMALE QUICK COUPLER	11



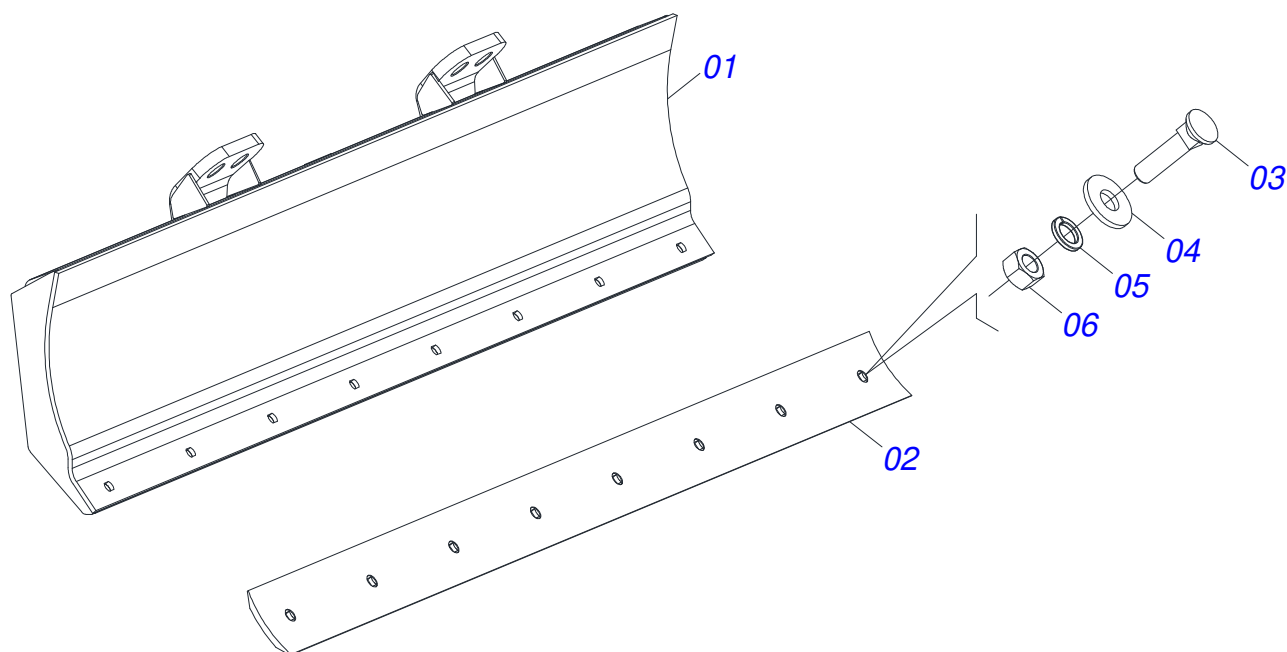
Item	Code	Description	See page	QT
01	0521063598	RIGHT CHASSIS		01
02	0521063599	LEFT FRAME		01
03	0511049953	MOBILE FULL SUPPORT	2	01
04	0511049956	MOBILE SUPPORT GUIDE ASSY	3	01
05	0501047708	2400 BLADE SUPPORT	4	01
06	0521021307	BOX WITH COMPONENTS	5	01



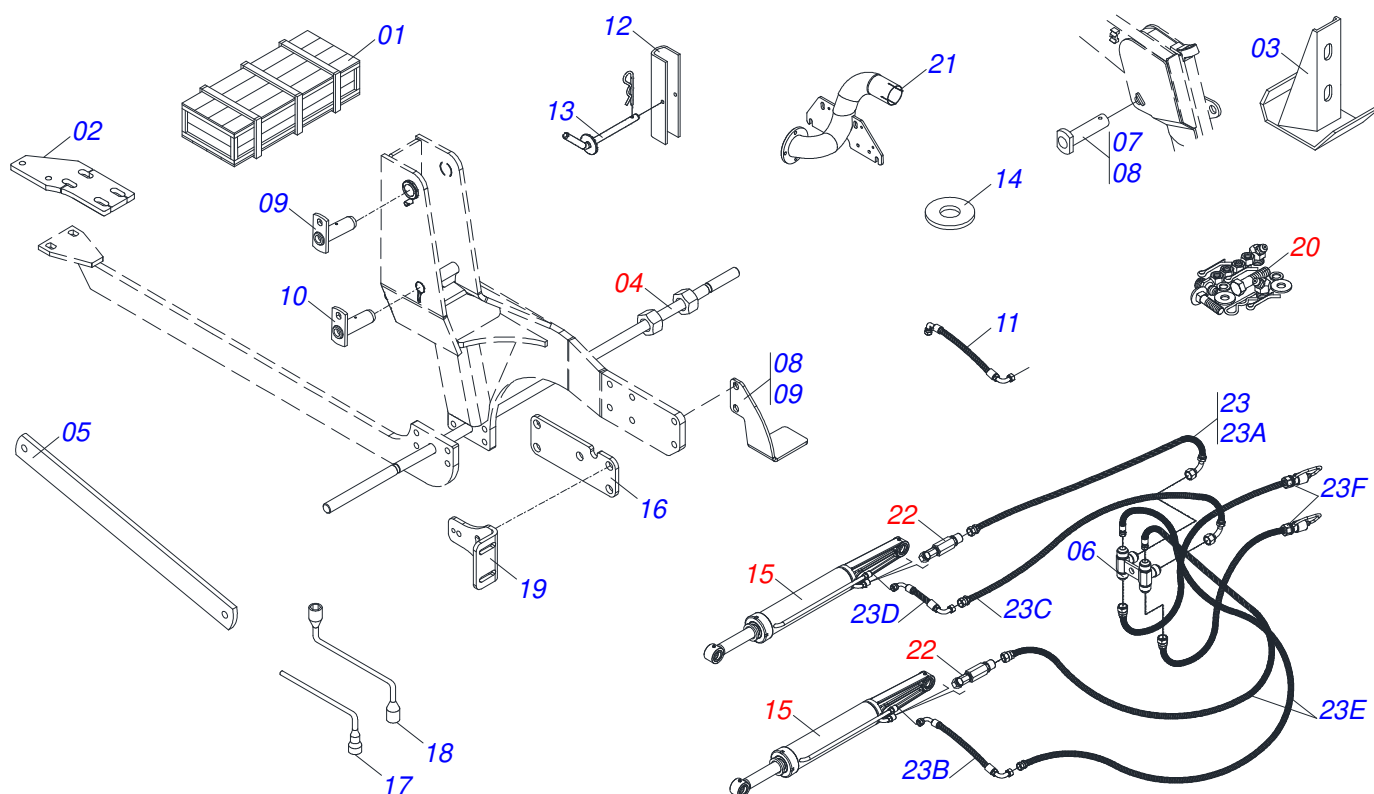
Item	Code	Description	See page	QT
01	0501062637	5/8" REGULATOR SUPPORT		01
02	0521010618	1.4" X 8.6" COUPLING SHAFT		01
03	0521010612	1.4" X 3.5" COUPLING SHAFT		01
04	0503010010	1/4" X 2.1/2" COTTERPIN		02
05	0503062270	SET LABEL ADHESIVE		01
06	0503034003	SERIAL NUMBER TAG 61 X 118		01
07	0503010001	3.2 X 5.5 RIVET		04
08	0503031428	READ MANUAL DECAL		01
09	0503031827	LUBRICATE AND RETIGHTEN DAILY DECAL		01
10	0521062701	MOBILE SUPPORT		01
11	0503034078	LIFTING POINTS DECAL		03



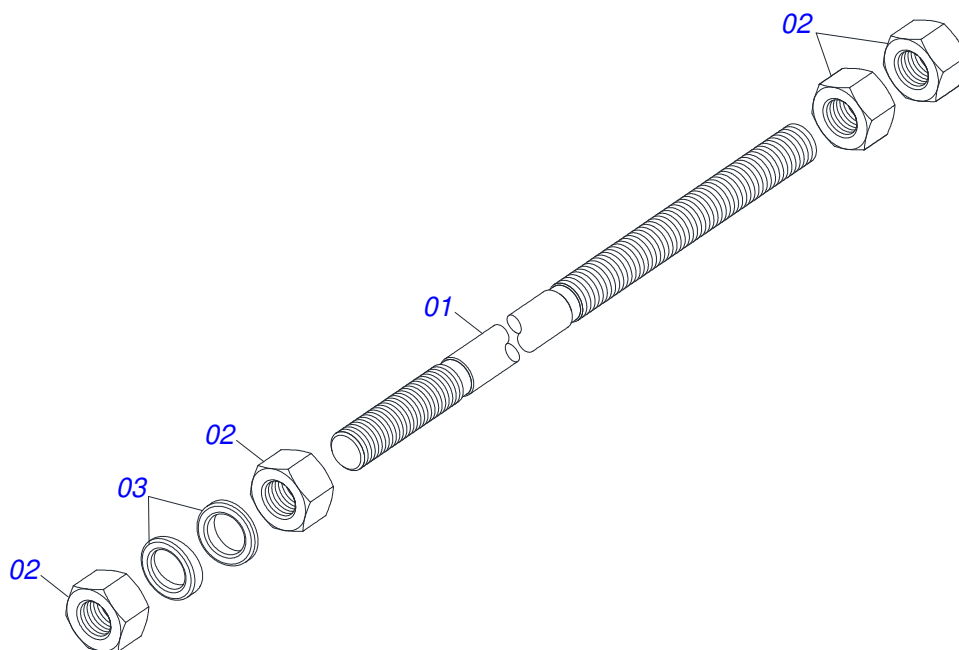
Item	Code	Description	See page	QT
01	0501017431	FRONT PROTECTION		01
02	0503010751	C3/8" X 1.1/4" HEX BOLT G.5		03
03	0501010984	FLAT WASHER		03
04	0503010026	3/8" NUT		03
05	0521062696	GUIDE SUPPORT MOBILE		01



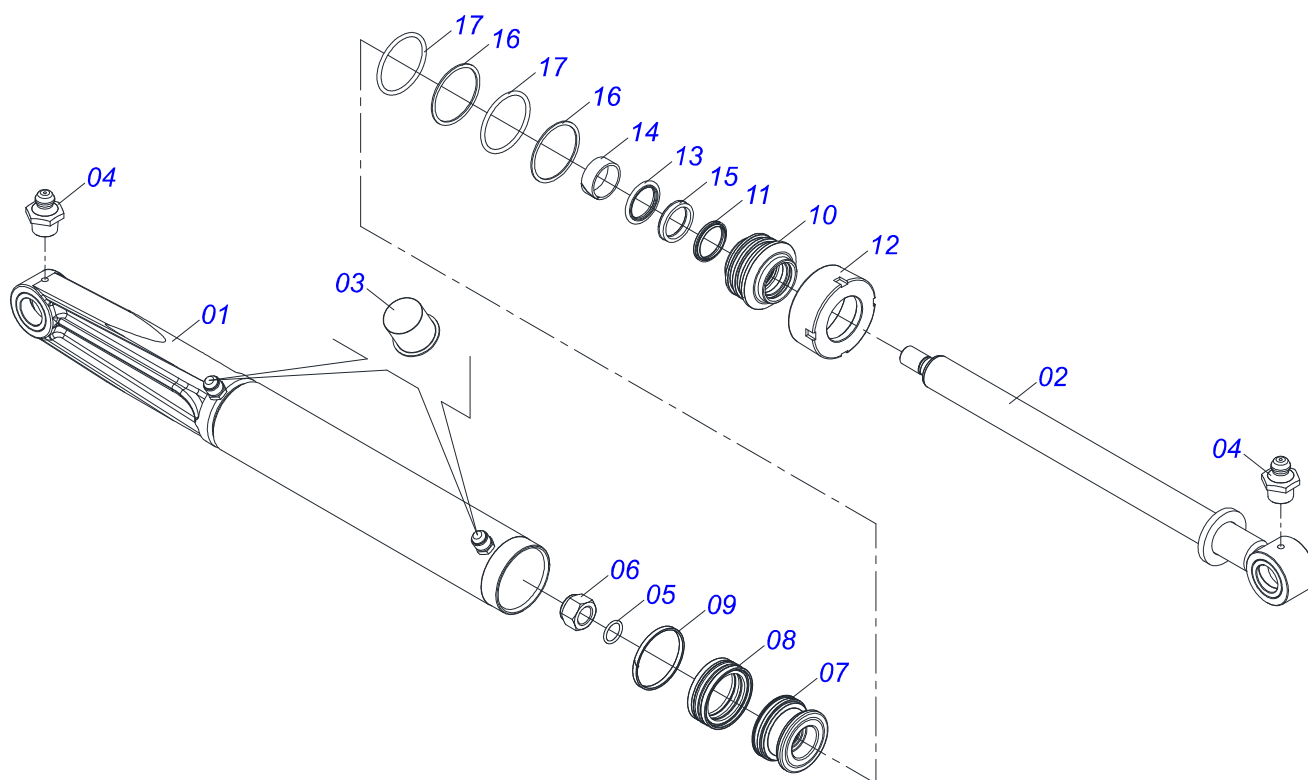
Item	Code	Description	See page	QT
01	0501067999	2390 BLADE SUPPORT		01
02	0622360016	94.5" SCRAPER REVERSIBLE		01
03	0501012240	BOLT		08
04	0501012140	FLAT WASHER		08
05	0503011445	SPRING WASHER		08
06	0503010013	5/8" NUT		08



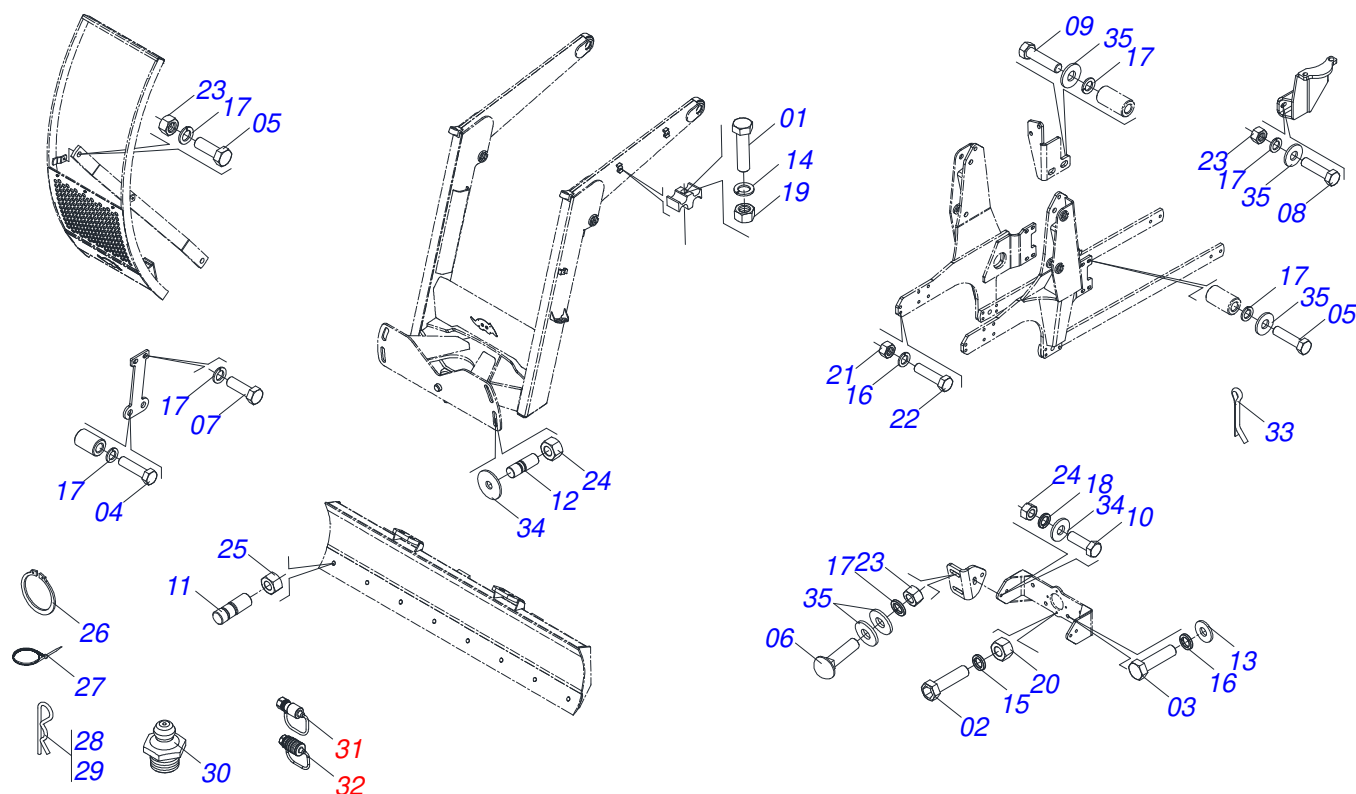
Item	Code	Description	See page	QT
01	0501100416	WOODEN BOX		01
02	0571012309	DIFFERENTIAL SUPPORT		02
03	0501063411	ESTABILIZER BRACKET		02
04	0501041427	1.1/4" NC X 1540 ASSY ROD	6	02
05	0571010018	FRENCH HAND		02
06	0521064869	7/8UNF JIC OIL DISTRIBUTOR		01
07	0521063354	COUPLING SHAFT		01
08	0521063358	37,20 X 161 JOINT AXIS		01
09	0501063751	1.5" X 5.5" PIVOT SHAFT		02
10	0501063960	37,2 X 130 PIVOT SHAFT LOCK		02
11	0501080623	HOSE 1/2 X 2000 TC-TC		01
12	0531017238	LOCK TRANSPORT		02
13	0501068994	0.3" X 3.1" LOCK PIN		02
14	0501010574	FLAT WASHER		04
15	0511058454	HYDRAULIC CYLINDER	7	02
16	0571017227	CHASSIS SHIM		02
17	0501061617	1" GANG BOLT WRENCH		01
18	0501068213	5/8" WRENCH DOUBLE		01
19	0571010158	FIXER GUIDE MOBILE SUPPORT		02
20	0511031587	PACKAGED PIECES	8	01
21	0521065911	EXHAUST SUPPLEMENT		01
22	0511057771	R. 7/8UNF - SAFETY VALVE	9	02
23	0511059128	HOSE GAME		01
23A	0501081638	1/2 X 1050 TC-TR HOSE		01
23B	0501080919	HOSE 1/2 X 1500 TC-TC		01
23C	0501081985	HOSE		01
23D	0501080623	HOSE 1/2 X 2000 TC-TC		01
23E	0501080076	1/2" X 2500 TR-TM HOSE ASSY		02
23F	0501081359	1/2 X 5500 TM-TM HOSE ASSY		02



Item	Code	Description	See page	QT
01	0501014250	1.1/4" X 1540 ROD		01
02	0501010087	1.1/4" NUT		04
03	0502012180	CONICAL SPRING WASHER		02



Item	Code	Description	See page	QT
01	0521062692	Ø85,72 X 510 7/8" CYLINDER - PD VTR A950		01
02	0501068208	44,45 X 670 TURNBUCKLE		01
03	0503030387	PLUG		02
04	0503010002	1800 GREASE FITTING		02
05	0503010042	2-214 N 3006-9B O'RING		01
06	0503010063	1" SELF-ALIGNING NUT		01
07	0571019710	1.7" X 3.4" PISTON		01
08	0503017935	RING		01
09	0503018144	RING		01
10	0571019711	RING SUPPORT		01
11	0503010761	D-1750 SCRAPER RING		01
12	0571019709	DETACHABLE COVER		01
13	0503017936	RING		01
14	0503017938	RING GUIDE		01
15	0503017937	GASKET		01
16	0503017940	8-337 BACK-UP RING		02
17	0503017939	2-337 N 3006-9B O' RING		02

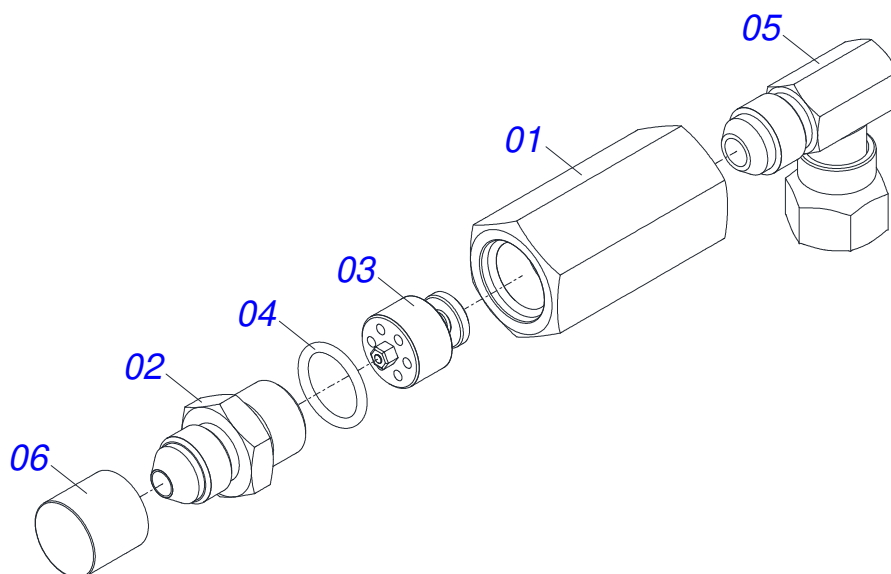


Item	Code	Description	See page	QT
01	0503010365	NUT		04
02	0503010175	3/8" X 1-1/4" BOLT		02
03	0503010188	M10 X 1,5 X 30 BOLT		02
04	0503010962	5/8" X 1-1/4" BOLT		04
05	0501010100	SCREW 5/8 UNC X 2 CS G.5 ZN		08
06	0503012699	BOLT 5/8NC X 2 CAPQ G.5 ZN 1K20548		02
07	0503013378	M16 X 2 X 50 BOLT		10
08	0503011730	M16 X 2 X 60 BOLT		08
09	0503012833	M16 X 2 X 90 BOLT		04
10	0501010500	3/4"X3"BOLT		04
11	0561016755	PRISONER 1 UNC X 1 UNC X 76 ZN		04
12	0561016756	3/4 UNC X 3/4 UNC X 56 PRISONER		04
13	0501010984	FLAT WASHER		02
14	0503010179	5/16" ZN SPRING WASHER		04
15	0503010025	3/8" SPRING WASHER		02
16	0503010019	1/2" SPRING WASHER		01
17	0503010027	5/8" SPRING WASHER		34
18	0503010023	3/4" SPRING WASHER		04
19	0503010364	5/16" SQUARE NUT		04
20	0503010026	3/8" NUT		02
21	0503010060	1/2" NUT		01
22	0501010161	1/2" X 1.1/4" BOLT		01
23	0503010013	5/8" NUT		10
24	0503010014	3/4" NUT		08
25	0501010059	1.5/8 NUT		04
26	0503010217	501040 CLAMPING RING (FOR AXLE)		04
27	0503013100	NYLON CLAMP		05
28	0503030168	HAIR PIN		02
29	0503030012	HAIR PIN		02
30	0503010002	1800 GREASE FITTING		10
31	0501053834	MALE QUICK COUPLER WITH CAP - 1/2 NPT	10	02

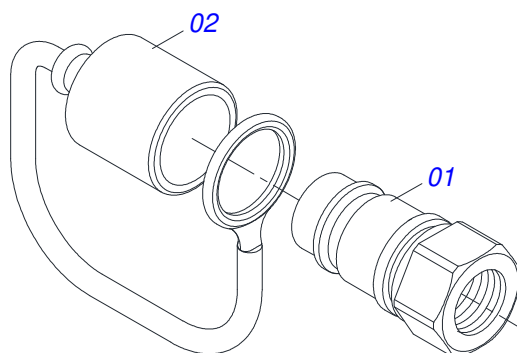
PACKAGED PIECES

0511031587

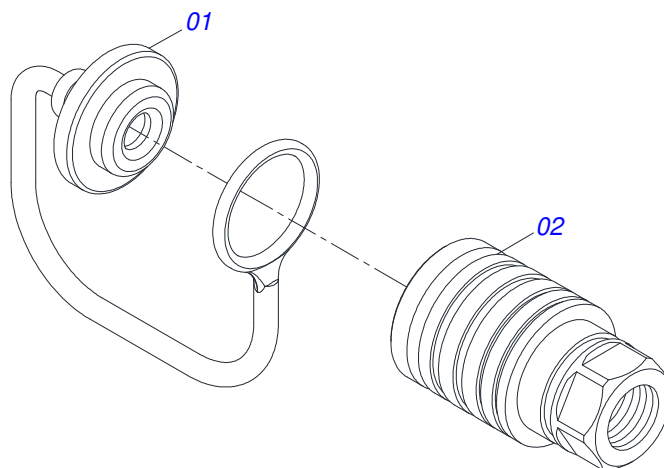
Item	Code	Description	See page	QT
32	0501053835	FEMALE QUICK COUPLER	11	02
33	0503010534	3/8 X 2-1/2 COTTERPIN		02
34	0501010322	FLAT WASHER		12
35	0501012140	FLAT WASHER		22



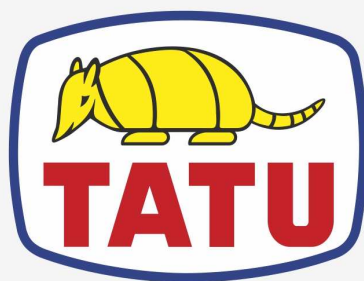
Item	Code	Description	See page	QT
01	0503018033	37 X R.7/8 UNF 90° JIC MALE CONNECTOR WITH ROTATING NUT		01
02	0581014053	1/2 BSP X 7/8 UNF JIC X 64 ADAPTER		01
03	0503016854	VALVE ASSY		01
04	0503010045	O'RING		01
05	0581014052	1/2 BSP X 7/8 UNF JIC X 43 NIPLE		01
06	0503030387	PLUG		01



Item	Code	Description	See page	QT
01	0503011627	MALE QUICK COUPLER AGR 1/2 NPT		01
02	0503011882	MALE QUICK COUPLER CAP		01



Item	Code	Description	See page	QT
01	0503011883	QUICK CONNECTION COVER		01
02	0503011628	FEMALE QUICK COUPLER		01



MARCHESAN

Technical Publications | Elaboration and Revision

LUIZ CANDIDO

www.marchesan.com.br

