

**AUXILIARY PRODUCTS**

# **STA-3 RT SCRAPER AGRICULTURAL WITHOUT TIRE**

**Code:** 0501093042  
**Series:** S-0501  
**Revision:** 00  
**Date Revision:** AGOSTO/2021

# **PARTS CATALOGUE**



**MARCHESAN**



# PRODUCTS

<b>Code</b>	<b>Description</b>
0113010044	STA-3 RT RASPADEIRA AGR PN S-0501
0113010045	STA-3 RT RASPADEIRA AGR PR S-0501
0113010050	STA-3 RT RASPADEIRA AGR S/PNEU S501

## **ATTENTION: IMPORTANT**

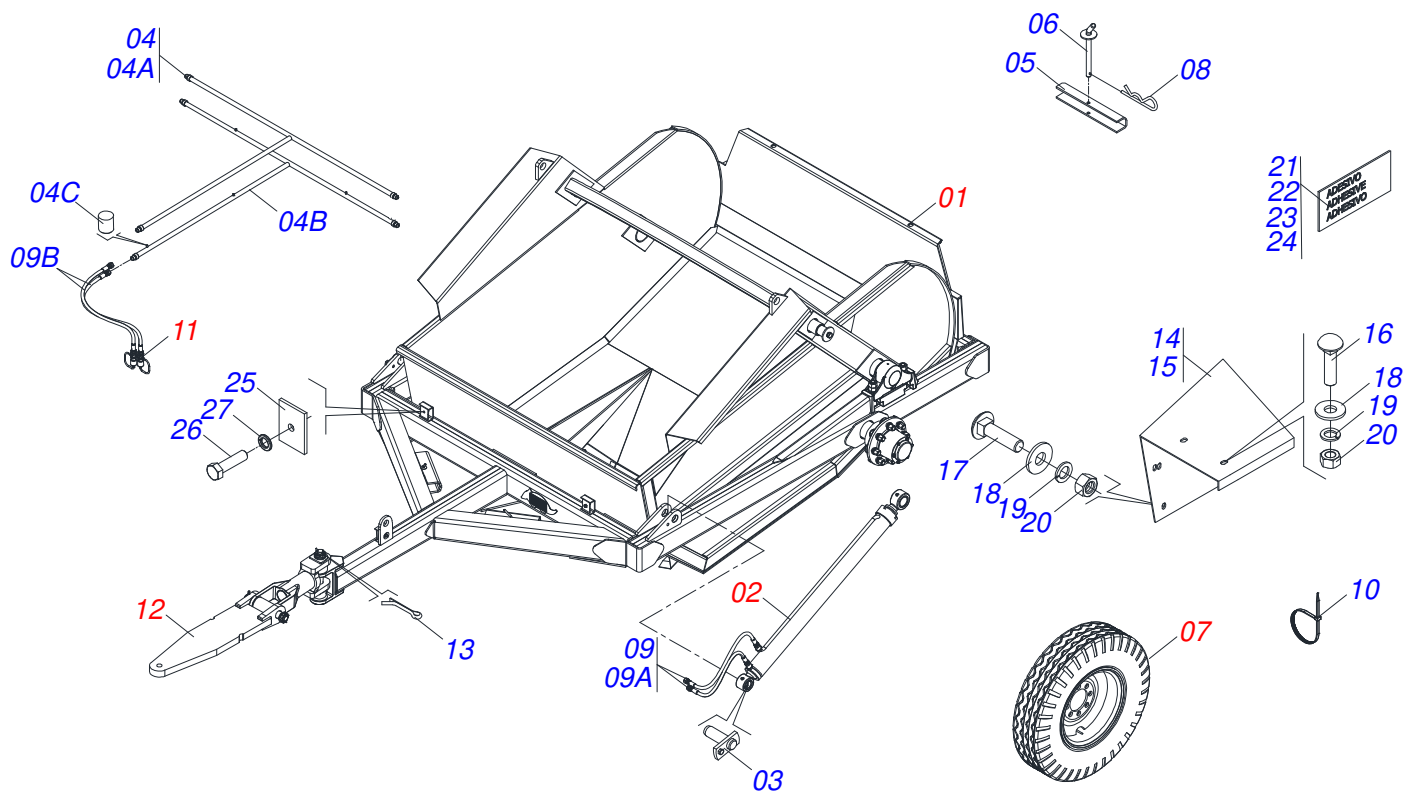
Marchesan S.A. reserves the right to improve and / or modify the technical features of its products, without obligation to do the same with those products already sold and without prior knowledge of the dealer or the consumer.



**MARCHESAN**

# INDEX

0909095948	ASSY FRAME	.....	1
0501056360	SEMIFINISHED FRAME	.....	2
0501052496	FLIP ASSY	.....	3
0501052497	CARRYING WHEEL HUB ASSY	.....	4
0501049597	1.7" X 32" X 48" X 37" HYDRAULIC CYLINDER	.....	5
0501053834	MALE QUICK COUPLER WITH CAP - 1/2 NPT	.....	6
0501053517	TRACTOR HITCH ASSY	.....	7
0503060510	WHEEL AND TIRE	.....	8
0503060213	35.4"X0.80"-14L WHEEL AND TIRE ASSY	.....	9



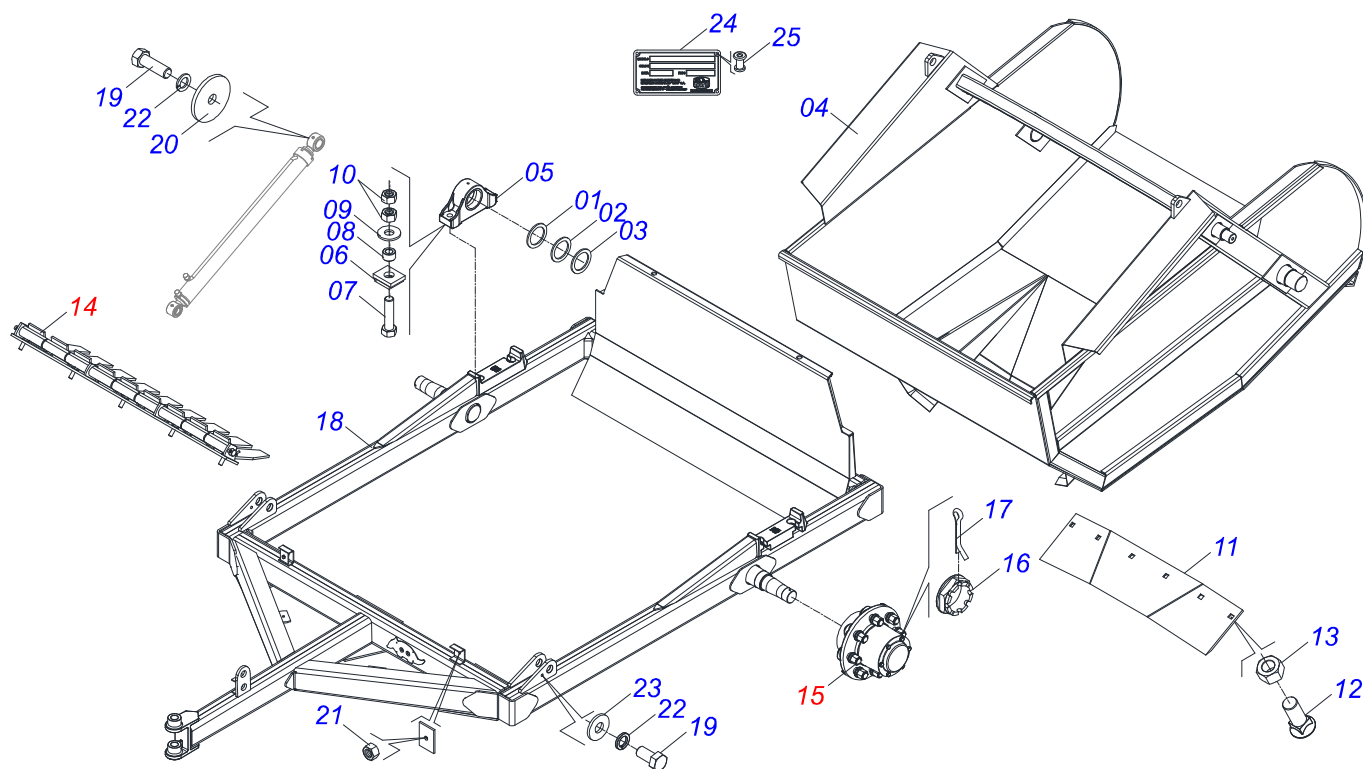
Item	Code	Description	See page	QT
01	0501056360	SEMI-FINISHED FRAME	2	01
02	0501049597	1.7" X 32" X 48" X 37" HYDRAULIC CYLINDER	5	02
03	0511062927	1.5" X 4.9" PIVOT SHAFT		02
04	0501069037	CONNECTOR		01
04A	0501070639	DUCT OIL DISTRIBUTOR		01
04B	0501070640	DUCT OIL DISTRIBUTOR		01
04C	0511011495	AXLE		04
05	0511017591	10.6" X 1.9" TRANSPORT LOCK		02
06	0501068994	0.3" X 3.1" LOCK PIN		02
07	0503060510	WHEEL AND TIRE	8	02
07.	0503060213	35.4"X0.80"-14L WHEEL AND TIRE ASSY	9	02
08	0503030168	HAIR PIN		02
09	0501053687	HOSE ASSY		01
09A	0501080189	1/2" X 28" TR-TR HOSE ASSY		04
09B	0501080074	1/2" X 86" TR-TM HOSE ASSY		02
10	0503013527	CLAMP ZIPER		04
11	0501053834	MALE QUICK COUPLER WITH CAP - 1/2 NPT	6	02
12	0501053517	TRACTOR HITCH ASSY	7	01
13	0503010010	1/4" X 2.1/2" COTTERPIN		02
14	0531013207	MUDGUARD RIGHT		01
15	0531013208	LEFT MUDGUARD		01
16	0501011600	1/2" X 1-1/4" BOLT		04
17	0501010243	1/2" X 1-1/2" BOLT		04
18	0511017302	FLAT WASHER		08
19	0503010019	1/2" SPRING WASHER		08
20	0503012682	1/2" BSW NUT		08
21	0503060917	SET LABEL ADHESIVE		01
22	0503031428	READ MANUAL DECAL		01
23	0503031827	LUBRICATE AND RETIGHTEN DAILY DECAL		01
24	0503034078	LIFTING POINTS DECAL		03
25	0501013439	PLATE WITH SUPPORT		02



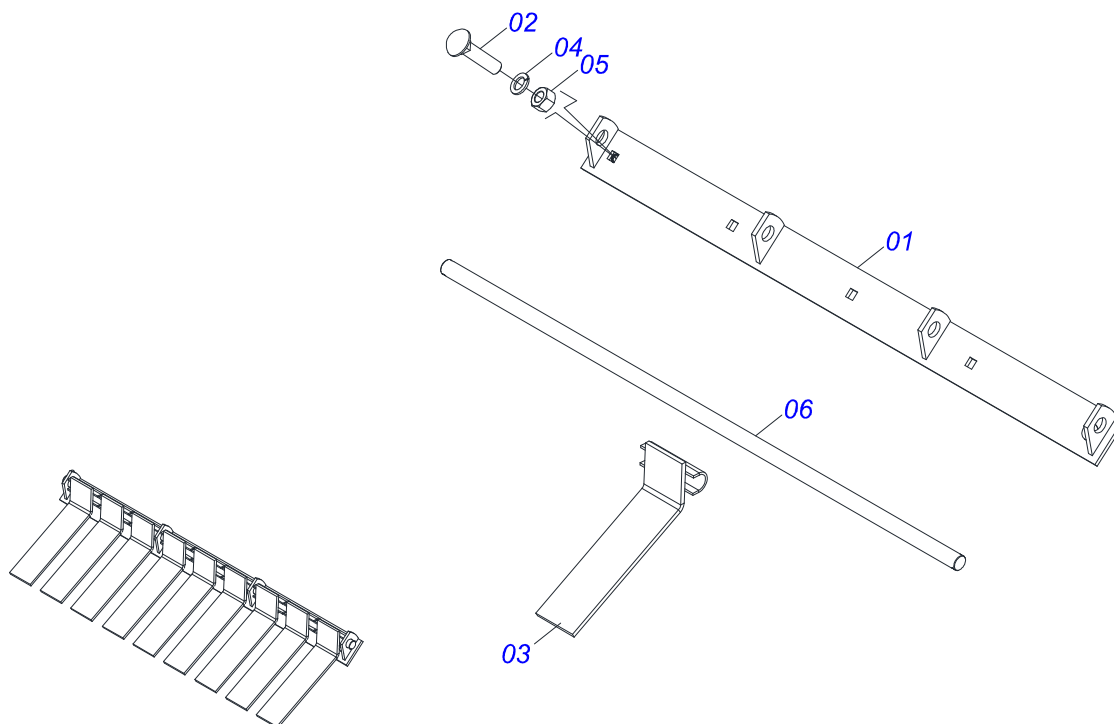
ASSY FRAME

0909095948

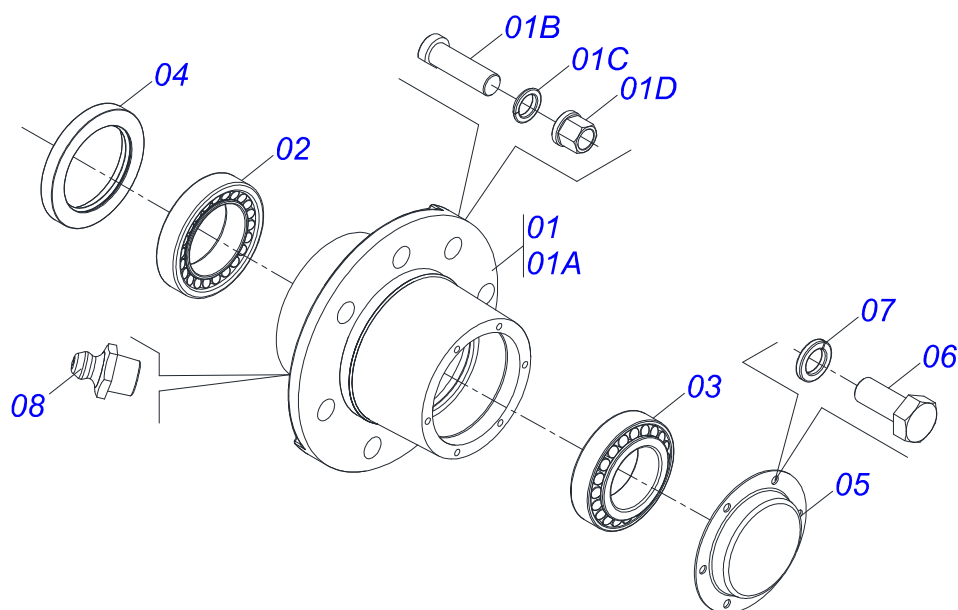
Item	Code	Description	See page	QT
26	0501810096	HOSE		02
27	0503011443	3/8" SPRING WASHER		02



Item	Code	Description	See page	QT
01	0531014846	FLAT WASHER		02
02	0531015317	FLAT WASHER		02
03	0531015318	FLAT WASHER		01
04	0511062918	BUCKET		01
05	0501110081	BEARING ASSY WITH BUSHING		02
06	0511064919	BEARING SUPPORT CHOCK		04
07	0503012925	7/8" X 5" BOLT		04
08	0521010967	SLEEVE		04
09	0501010076	FLAT WASHER		04
10	0503010558	7/8" NUT		08
11	0521019034	SCRAPER 1490 STA3 RT S-0600		01
12	0501012239	5/8" X 1.3/4" BOLT		09
13	0503010013	5/8" NUT		09
14	0501052496	FLIP ASSY	3	01
15	0501052497	CARRYING WHEEL HUB ASSY	4	02
16	0502040080	2.1/2" SLOTTED NUT		02
17	0503012231	1/4" X 3" COTTERPIN		02
18	0511062930	FRAME		01
19	0503011267	BOLT 5/8 UNC X 1.1/2 C S G.5 ZN		04
20	0501010145	FLAT WASHER		02
21	0503010026	3/8" NUT		03
22	0503011445	SPRING WASHER		13
23	0501012140	FLAT WASHER		02
24	0503034003	SERIAL NUMBER TAG 61 X 118		01
25	0503010001	3.2 X 5.5 RIVET		04

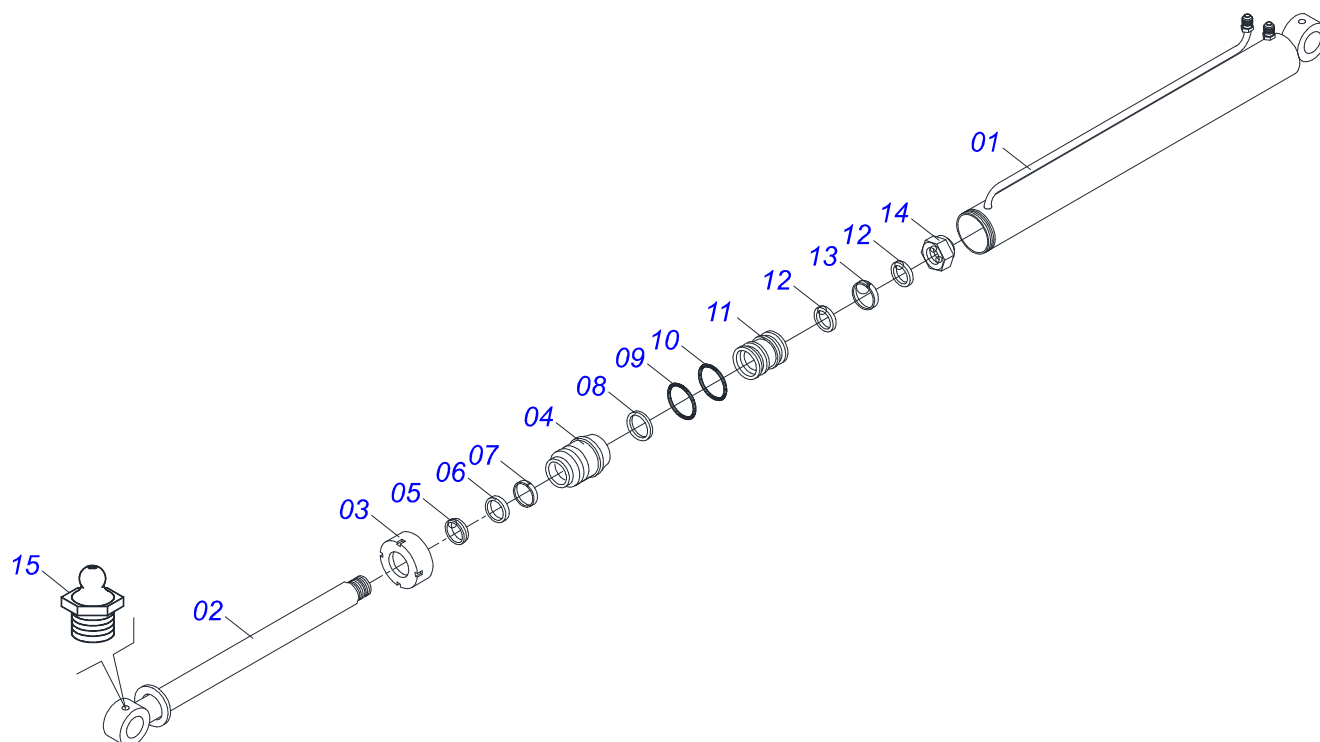


Item	Code	Description	See page	QT
01	0511061076	COVER SUPPORT		01
02	0501010243	1/2" X 1-1/2" BOLT		05
03	0501063159	SECTION SUPPORT		13
04	0503010019	1/2" SPRING WASHER		05
05	0503012682	1/2" BSW NUT		05
06	0521015580	COVER SUPPORT FIXER		01

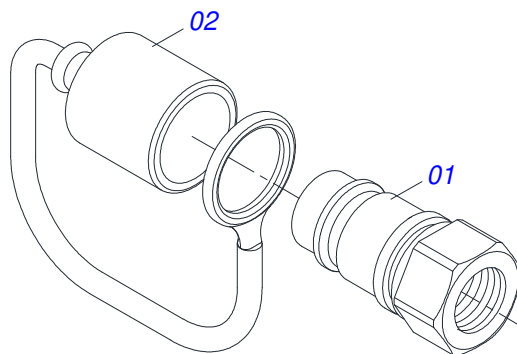


Item	Code	Description	See page	QT
01	0501110751	HUB AND SPINDLE WITH BOLT		01
01A	0502040522	HUB CARRYING-WHEELS		01
01B	0503011339	M22 X 1,5 X 72 BOLT		08
01C	0503011340	SPHERICAL SPRING WASHER		08
01D	0503011341	M22 X 0.6" NUT GR8 NUT		08
02	0503010059	33287/33462 ROLLER BEARING		01
03	0503010007	3982/3920 ROLLER BEARING		01
04	0503010050	SEAL 00085-B		01
05	0541013225	WHEEL BOX COVER		01
06	0503010240	5/16" X 3/4" BOLT		06
07	0503011444	SPRING WASHER		06
08	0503010002	1800 GREASE FITTING		01

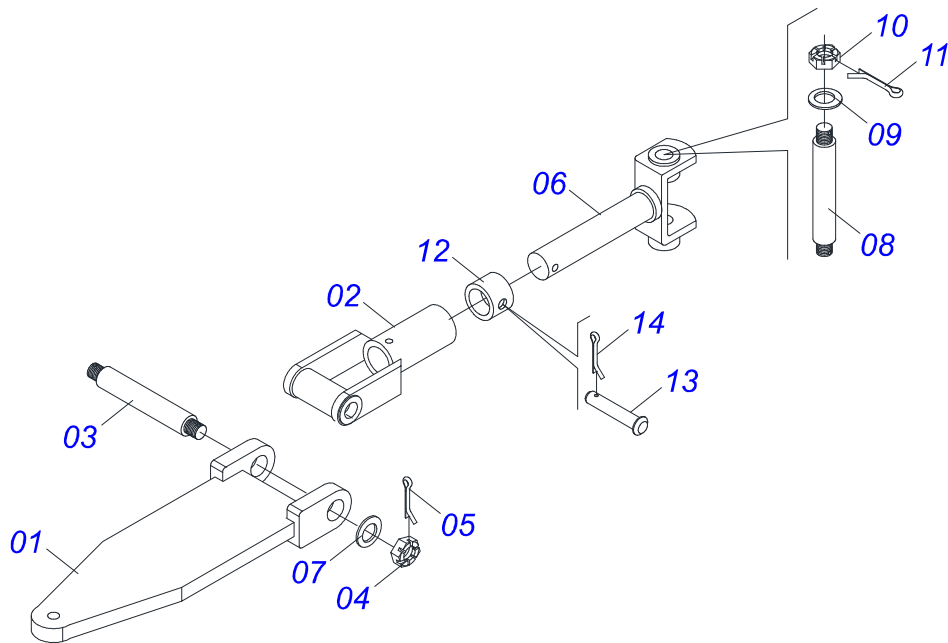




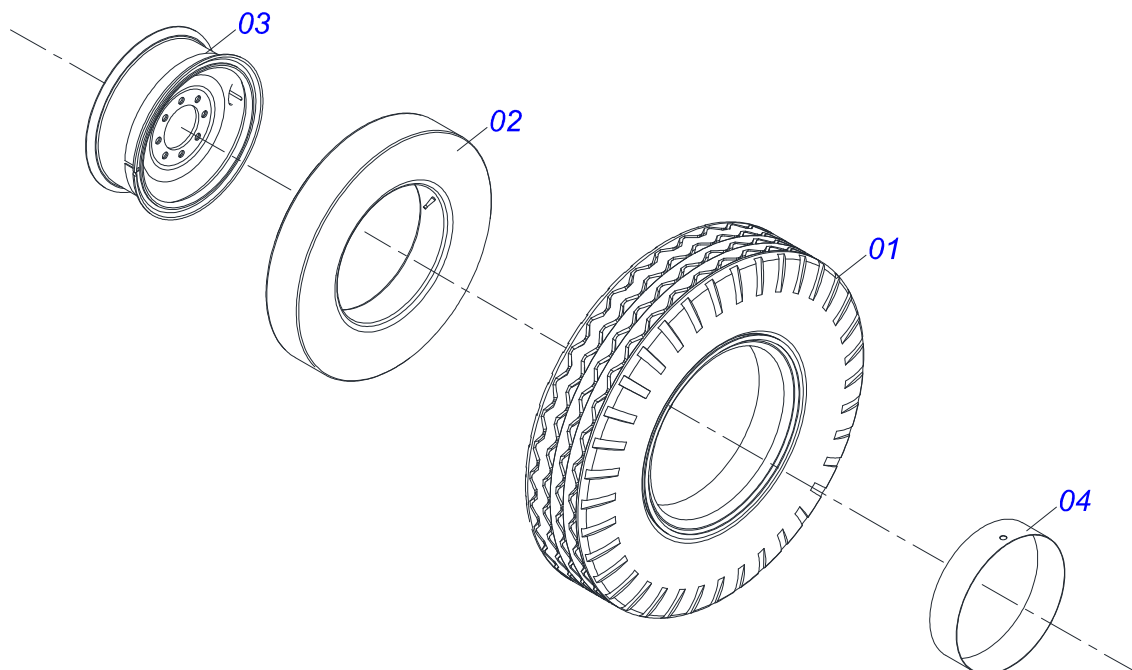
Item	Code	Description	See page	QT
01	0511061941	3" X 44" CYLINDER CASE		01
02	0501068959	HYDRAULIC CYLINDER TURNBUCKLE		01
03	0502011899	MOBILE COVER		01
04	0502011898	1.8" X 3.0" PISTON		01
05	0503010761	D-1750 SCRAPER RING		01
06	0503010990	GASKET		01
07	0503010949	W2-2000-500 PK RING G.E		01
08	0503011059	8-334 BACK-UP RING		01
09	0503010343	2-334 N 3006-9B O'RING		01
10	0503010345	2-218 N 3006-9B O'RING		01
11	0502011897	RING SUPPORT		01
12	0503012768	3750-2250 GASKET		02
13	0503010992	W2-3000-500 PK RING G.E		01
14	0503010063	1" SELF-ALIGNING NUT		01
15	0503010002	1800 GREASE FITTING		02
16	0501033655	HYDRAULIC CYLINDER REPAIR KIT		01



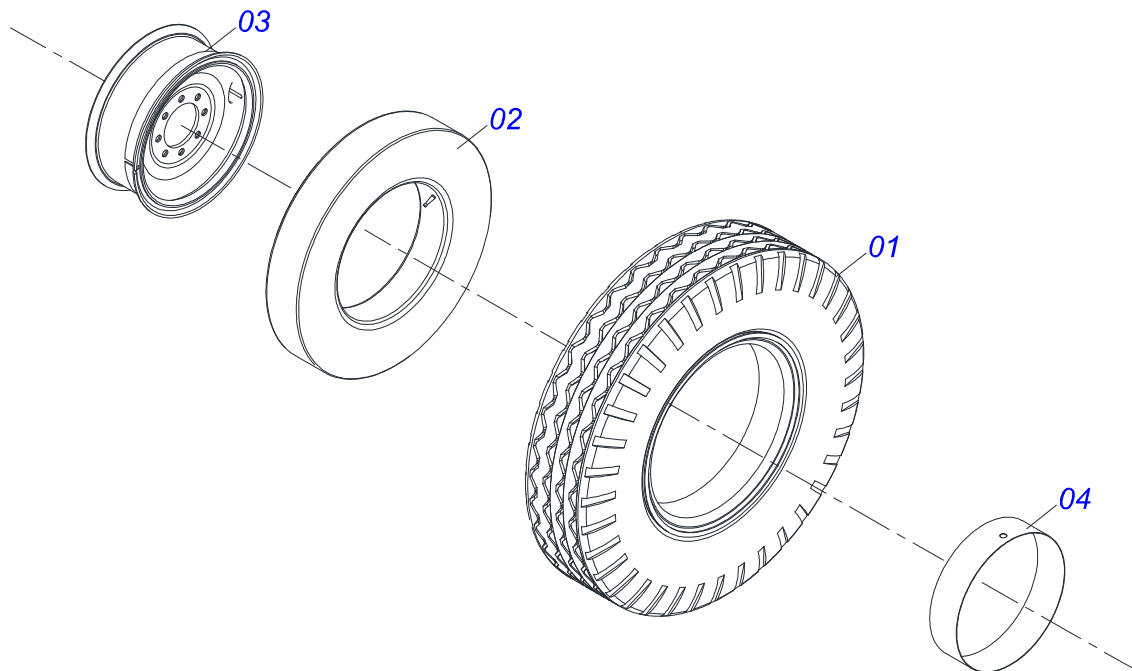
Item	Code	Description	See page	QT
01	0503011627	MALE QUICK COUPLER AGR 1/2 NPT		01
02	0503011882	MALE QUICK COUPLER CAP		01



Item	Code	Description	See page	QT
01	0511061078	SEMI TRACTOR HITCH		01
02	0502040512	TRACTOR HITCH BODY		01
03	0521015578	TRACTOR HITCH AXLE		01
04	0501011301	1.1/2 UNC 6FPP 2.5/16 NUT		02
05	0503010010	1/4" X 2.1/2" COTTERPIN		02
06	0502040513	U COUPLING TRACTOR		01
07	0531012642	FLAT WASHER		02
08	0531012627	1.1/2" UNC X 484 AXLE HITCH		01
09	0521011688	FLAT WASHER		02
10	0501011301	1.1/2 UNC 6FPP 2.5/16 NUT		02
11	0503010010	1/4" X 2.1/2" COTTERPIN		02
12	0502040510	HITCH RING		01
13	0521010588	0.9" X 7.0" COUPLING SHAFT		01
14	0503010571	1/4" X 1.1/2 COTTERPIN		01



Item	Code	Description	See page	QT
01	0503010056	WHEEL		01
02	0503010057	INNER TIRE		01
03	0501068263	2.6"X0.8"X6.0"X 8F0. 9"X8.0" WHEEL		01
04	0503010470	PROTECTION		01



Item	Code	Description	See page	QT
01	0503010494	9.0LX 20" X 14 PLY, TIRE		01
02	0503010057	INNER TIRE		01
03	0501068263	2.6"X0.8"X6.0"X 8F0. 9"X8.0" WHEEL		01
04	0503010470	PROTECTION		01





**MARCHESAN**

**Technical Publications | Elaboration and Revision**

LORENA ROCHA ALVES

[www.marchesan.com.br](http://www.marchesan.com.br)

