

**CHASER BIN**

**DCA2 5500 MC**

**Code:** 0501092849  
**Series:** S-0598  
**Revision:** 00  
**Date Revision:** FEVEREIRO/2021

# PARTS CATALOGUE



**MARCHESAN**



# PRODUCTS

<b>Code</b>	<b>Description</b>
0109090114	DCA2 5500 MC C/ABAF/P11L15 S/RED
0109090059	DCA2 5500 MC C/ABAFADOR S-0598
0109090087	DCA2 5500 MC C/ABAFADOR P11L15 S598

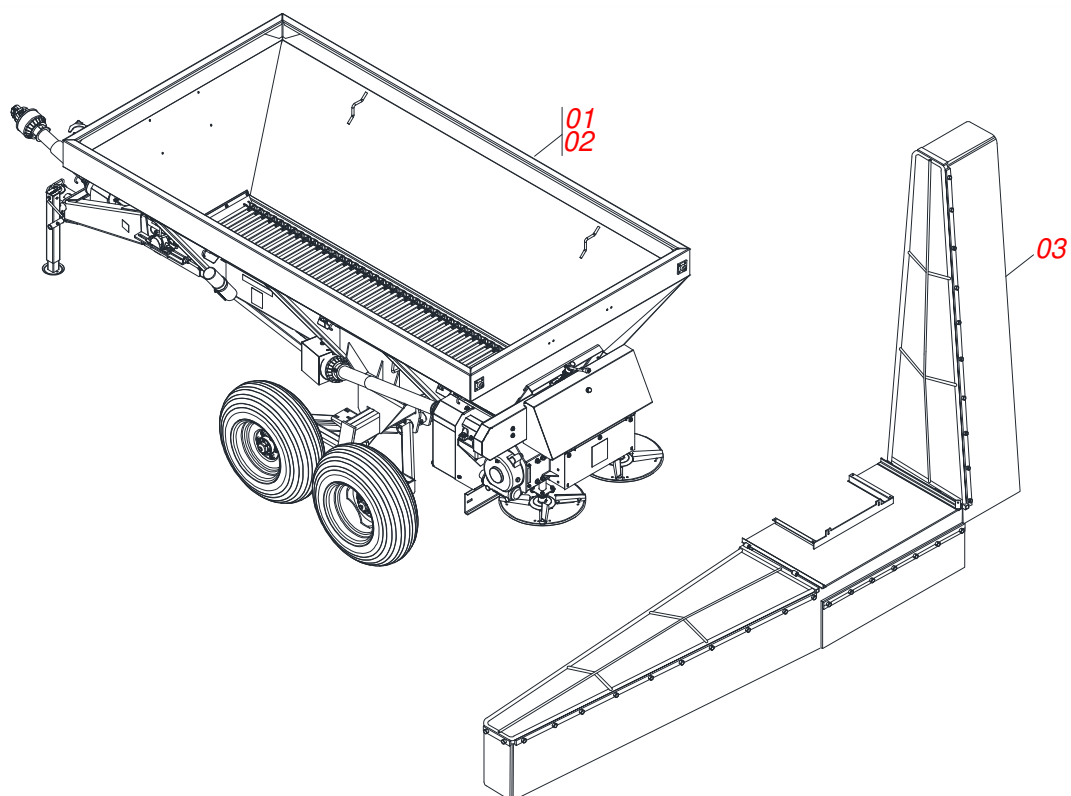
## **ATTENTION: IMPORTANT**

Marchesan S.A. reserves the right to improve and / or modify the technical features of its products, without obligation to do the same with those products already sold and without prior knowledge of the dealer or the consumer.

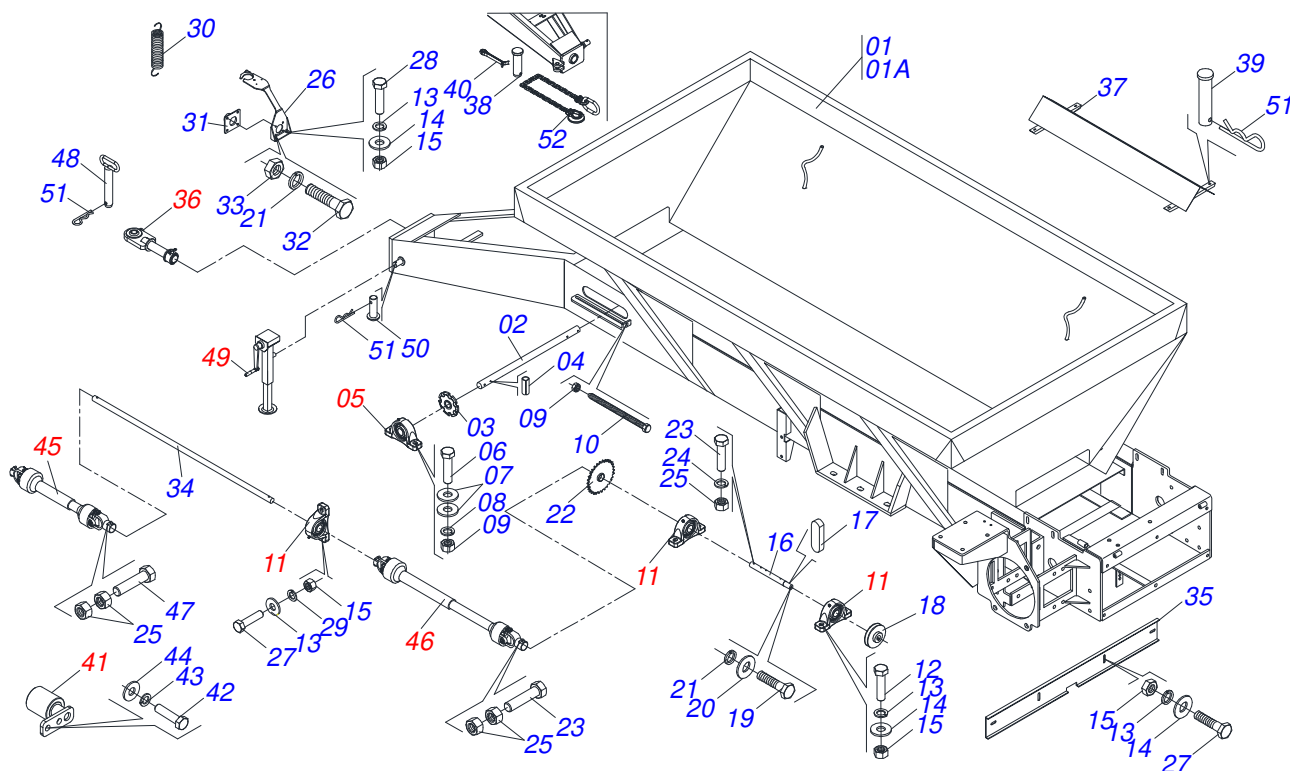


# INDEX

0909095584	DCA2 5500 MC	.....	1
0909095582	DCA2 5500 MC (FRONT)	.....	2
0909095581	DCA2 5500 MC (REAR)	.....	3
0501047985	REDUCER	.....	4
0501044306	BATH BEARING	.....	5
0511041213	AGRICULTURAL BEARING	.....	6
0501044308	AGRICULTURAL BEARING ASSY	.....	7
0511059305	REAR PROTECTION WITH MINOR PROTECTOR	.....	8
0521053161	CARDAN SUPPORT WITHOUT SPRING	.....	9
0521046045	FIXING STAND ASSY	.....	10
0501051142	CARRYING WHEEL HUB	.....	11
0501048783	DRIVE SHAFT	.....	12
0501048241	DRIVE SHAFT	.....	13
0511041259	DRAWBAR JACK ASSY	.....	14
0501054846	SLUICE VALVE SUPPORT	.....	15
0511059094	SHAFT BEARING THREADED	.....	16
0501051782	RIGHT BEARING SUPPORT DISC	.....	17
0501051783	LEFT BEARING SUPPORT DISC	.....	18
0501048000	AGRICULTURAL BEARING	.....	19
0501051972	DISTRIBUTOR RIGHT DISC ASSY	.....	20
0501051973	DISTRIBUTOR LEFT DISC ASSY	.....	21
0503060206	29.5"X0.6"- 10L WHEEL AND TIRE ASSY	.....	22
0501046802	BELT TENSIONER ASSY	.....	23
0909090358	DAMPER	.....	24
0511048904	DRIVE THE TRANSPORT	.....	25



Item	Code	Description	See page	QT
01	0909095582	DCA2 5500 MC (FRONT)	2	01
02	0909095581	DCA2 5500 MC (REAR)	3	01
03	0909090358	DAMPER	24	01



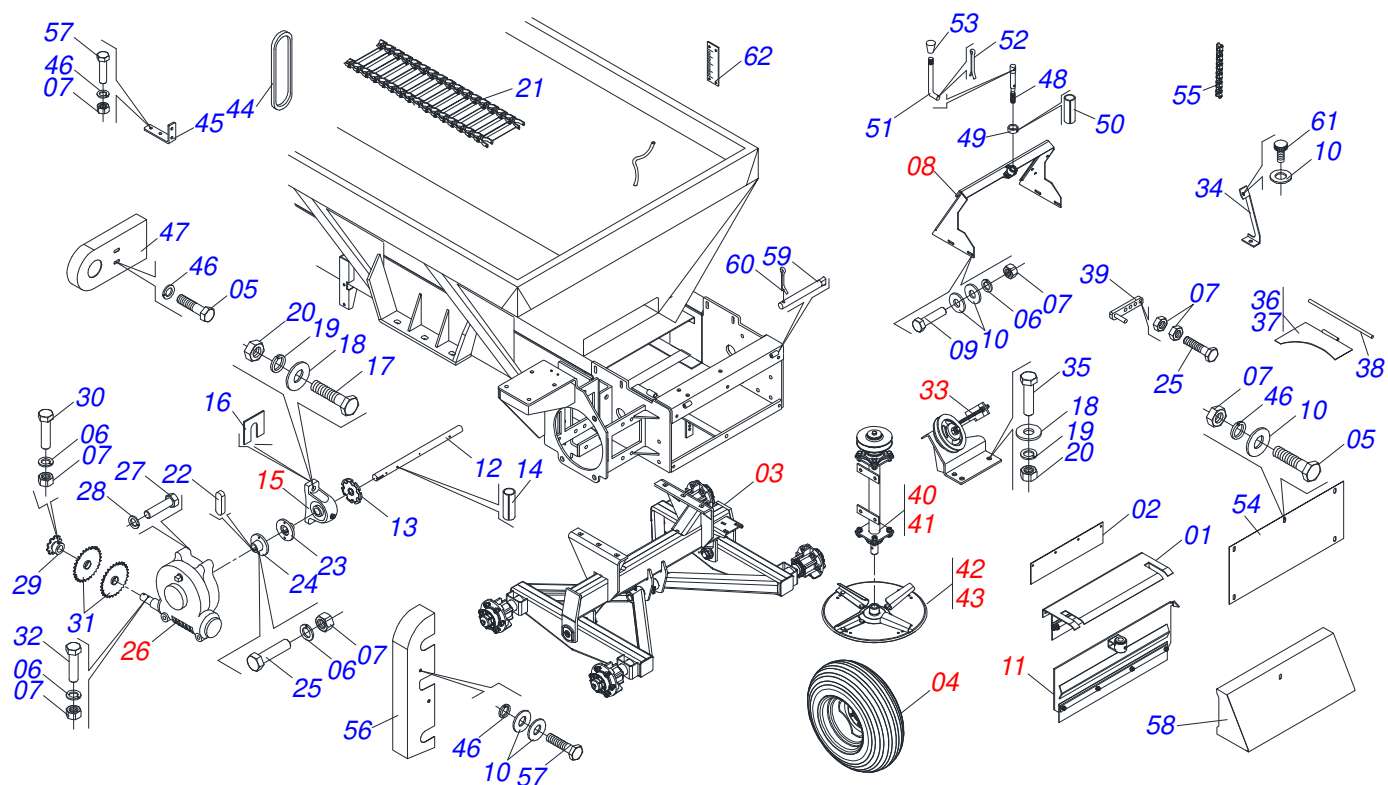
Item	Code	Description	See page	QT
01	0501072807	BUCKET SEMI MOUNTED		01
01A	0501072806	FRAME SEMI MOUNTED		01
02	0511016482	DRIVEN AXLE		01
03	0502040728	7Z GEAR		02
04	0503010361	SPRING PIN		02
05	0501044308	AGRICULTURAL BEARING ASSY	7	02
06	0503010899	5/8" X 2-1/4" BOLT		04
07	0501012140	FLAT WASHER		08
08	0503011445	SPRING WASHER		04
09	0503010013	5/8" NUT		06
10	0501067853	ROD STABILIZER		02
11	0511041213	AGRICULTURAL BEARING	6	03
12	0503010740	BOLT 1/2 UNC X 2 CS G.5 ZN		06
13	0503011440	SPRING WASHER		06
14	0511017302	FLAT WASHER		15
15	0503010060	1/2" NUT		10
16	0521011063	TRANSMISSION AXLE		01
17	0501010536	KEYWAY SQUARE		01
18	0502011361	REEL 1C 5.5" X 1.1" PULLEY		01
19	0503010355	7/16" X 1" BOLT		01
20	0511014052	FLAT WASHER		01
21	0503011446	SPRING WASHER		09
22	0501069020	35Z GEAR		01
23	0503011268	3/8" X 2-1/2" BOLT		03
24	0503011443	3/8" SPRING WASHER		01
25	0503010026	3/8" NUT		09
26	0521053161	CARDAN SUPPORT WITHOUT SPRING	9	01
27	0503010920	1/2" X 1.1/2" BOLT		04
28	0503011082	C1/2" X 1.3/4" SCREW		02
29	0503010019	1/2" SPRING WASHER		04
30	0503030198	0.6" X 2.4" X 0.1" EXTENSION SPRING		01



DCA2 5500 MC  
DCA2 5500 MC (FRONT)

Page 2  
0909095582

Item	Code	Description	See page	QT
31	0501044306	BATH BEARING	5	01
32	0503011102	BOLT 7/16 UNC X 1.1/4 C S G.5 ZN		04
33	0503010244	7/16" NUT		04
34	0521011192	1800 FRONT DRIVE AXLE		01
35	0501019838	BAMPER		01
36	0521057116	FULL HITCH		01
37	0511067799	DEFLECTOR DE ESTERA		01
38	0581011220	COUPLING SHAFT		01
39	0521010782	COUPLING SHAFT		04
40	0503010131	3/16" X 1-1/2" COTTERPIN		01
41	0501050829	CHAIN TENSIONER		01
42	0503010237	3/8" X 1" BOLT		22
43	0503010025	3/8" SPRING WASHER		49
44	0501010984	FLAT WASHER		20
45	0501048241	DRIVE SHAFT	13	01
46	0501048783	DRIVE SHAFT	12	01
47	0503010765	3/8" X 3" BOLT		01
48	0501047881	AXIS JOINT ASSY		01
49	0511041259	DRAWBAR JACK ASSY	14	01
50	0521010549	COUPLING SHAFT		01
51	0503030168	HAIR PIN		01
52	0503013150	1300 X 3/8 CHAIN		01



Item	Code	Description	See page	QT
01	0511059305	REAR PROTECTION WITH MINOR PROTECTOR	8	01
02	0511011866	PROTECTION LARGER		01
03	0521046045	FIXING STAND ASSY	10	01
04	0503060206	29.5"X0.6"- 10L WHEEL AND TIRE ASSY	22	04
05	0503010237	3/8" X 1" BOLT		20
06	0503011443	3/8" SPRING WASHER		35
07	0503010026	3/8" NUT		58
08	0501054846	SLUICE VALVE SUPPORT	15	01
09	0503010751	C3/8" X 1.1/4" HEX BOLT G.5		04
10	0501010984	FLAT WASHER		15
11	0501054847	SLUICE VALVE COVER ASSY		01
12	0511016481	MOTOR SHAFT		01
13	0502040728	7Z GEAR		04
14	0503010361	SPRING PIN		06
15	0501044308	AGRICULTURAL BEARING ASSY	7	02
16	0501010794	HIDR CHOCK REGULATOR		04
17	0503010740	BOLT 1/2 UNC X 2 CS G.5 ZN		04
18	0511017302	FLAT WASHER		11
19	0503011440	SPRING WASHER		11
20	0503010060	1/2" NUT		11
21	0501067591	DRIVE THE FERTILIZER TRANSPORT		01
22	0501010540	KEYWAY SQUARE		02
23	0511016540	MAT COUPLING FLANGE		01
24	0511016541	REDUCTION COUPLING FLANGE		01
25	0503010849	3/8" X 1-1/2" BOLT		03
26	0501047985	REDUCER	4	01
27	0503011167	M16 X 2 X 30 BOLT		04
28	0503011445	SPRING WASHER		04
29	0501069017	12Z GEAR		01
30	0503011268	3/8" X 2-1/2" BOLT		06
31	0501069020	35Z GEAR		02

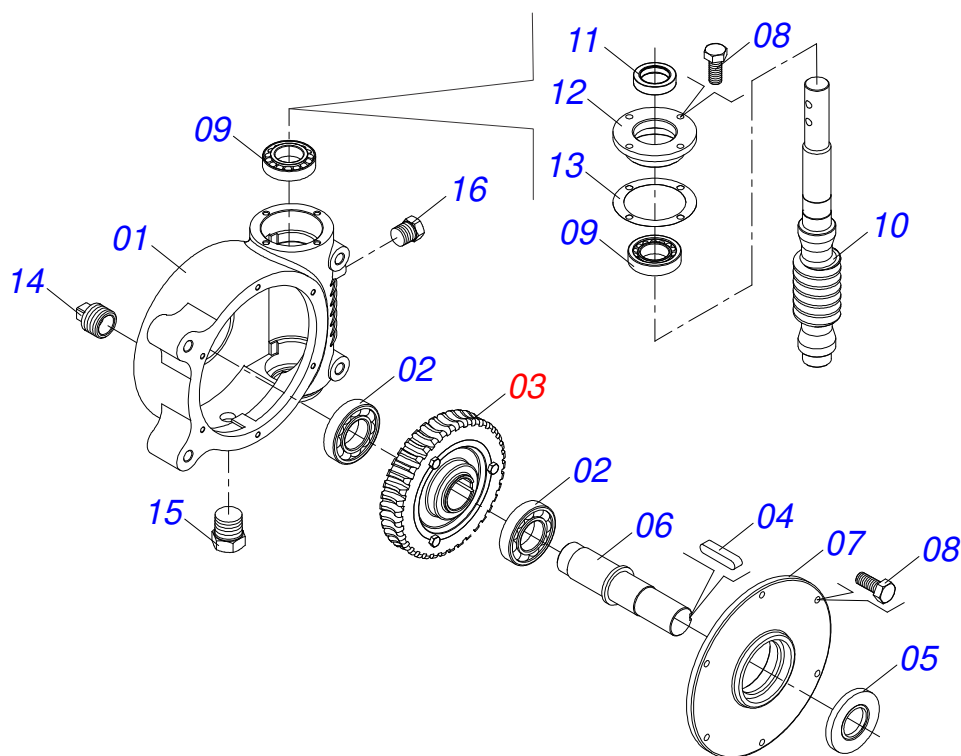


DCA2 5500 MC  
DCA2 5500 MC (REAR)

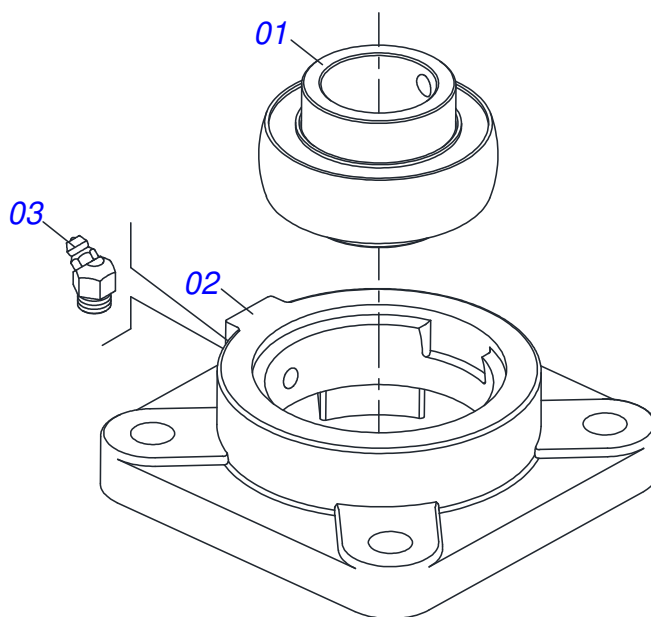
Page 3  
0909095581

Item	Code	Description	See page	QT
32	0503011141	3/8" X 2-3/4" BOLT		01
33	0501046802	BELT TENSIONER ASSY	23	01
34	0511060909	PROTECTION REAR SUPPORT FIXER		01
35	0503010920	1/2" X 1.1/2" BOLT		03
36	0501067203	RIGHT FLOW DIVIDING		01
37	0501067361	LEFT FLOW DIVIDING		01
38	0511016530	TENSIONER OPEN		01
39	0501067368	DIVISOR REGULATOR OPEN		01
40	0501051782	RIGHT BEARING SUPPORT DISC	17	01
41	0501051783	LEFT BEARING SUPPORT DISC	18	01
42	0501051972	DISTRIBUTOR RIGHT DISC ASSY	20	01
43	0501051973	DISTRIBUTOR LEFT DISC ASSY	21	01
44	0503010154	C-128 BELT		01
45	0511066013	FIXER OF PROTECTION		01
46	0503010025	3/8" SPRING WASHER		14
47	0521018640	PROTECTION SIDE BELT		01
48	0501069214	REGULATOR		01
49	0511013015	SLEEVE		01
50	0503010561	SPRING PIN		01
51	0521011107	CRANK BODY		01
52	0503010257	1/8" X 1" COTTERPIN		01
53	0503030878	LEVER CRANK		01
54	0501019460	REAR PROTECTION		01
55	0503013003	50-1 CHAIN X 79 LINK + REDUCTION + MENDING		01
56	0501069179	CARRY-WHEEL CHAIN PROTECTION CAP		01
57	0503010256	3/8" X 3/4" BOLT		02
58	0501069840	REAR COVER PROTECTION		01
59	0501017574	0.3" X 2.7" AXLE		02
60	0503010140	1/8" X 3/4" COTTERPIN		02
61	0503010386	CABLE		02
62	0503030751	REGULATOR PLATE		01

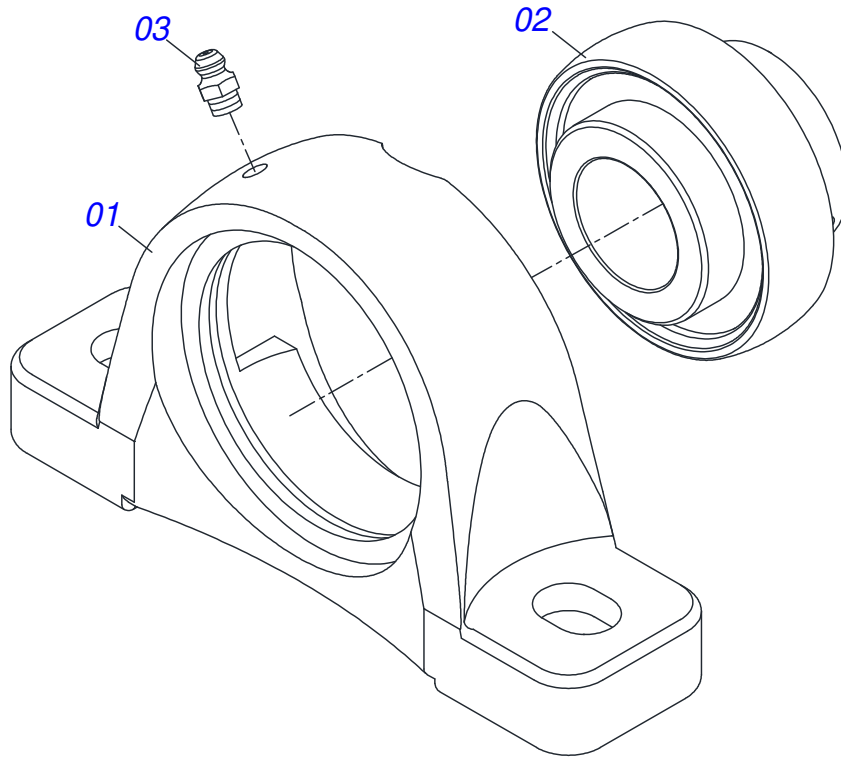




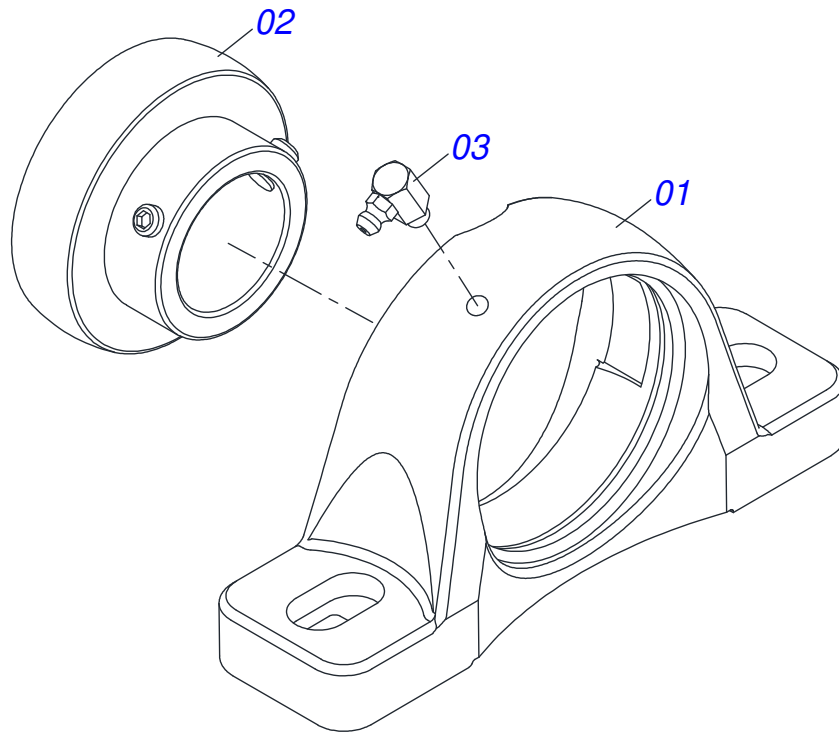
Item	Code	Description	See page	QT
01	0502011456	REDUCTION BOX		01
02	0503011095	6208 BALL BEARING		02
03	0501051774	38Z CROWN		01
04	0503011304	1/2" X 2.4" KEYWAY SQUARE		01
05	0503010818	02675-BRG SEAL		01
06	0521010996	AXLE		01
07	0502020556	LARGER COVER		01
08	0503010240	5/16" X 3/4" BOLT		10
09	0503010016	BEARING LM		02
10	0521010997	SCREW THEAD		01
11	0503011171	00912-BRG SEAL		01
12	0502011457	SMALLER COVER		01
13	0503030981	102 X 75,5 X 0,10 JOINT		01
14	0521011023	PLUG		01
15	0503031604	1/2" BSP PLUG		01
16	0503010856	OIL PLUG		01



Item	Code	Description	See page	QT
01	0503011162	BALL BEARING		01
02	0503011146	HOUSING BEARING		01
03	0503011099	GREASE FITTING		01

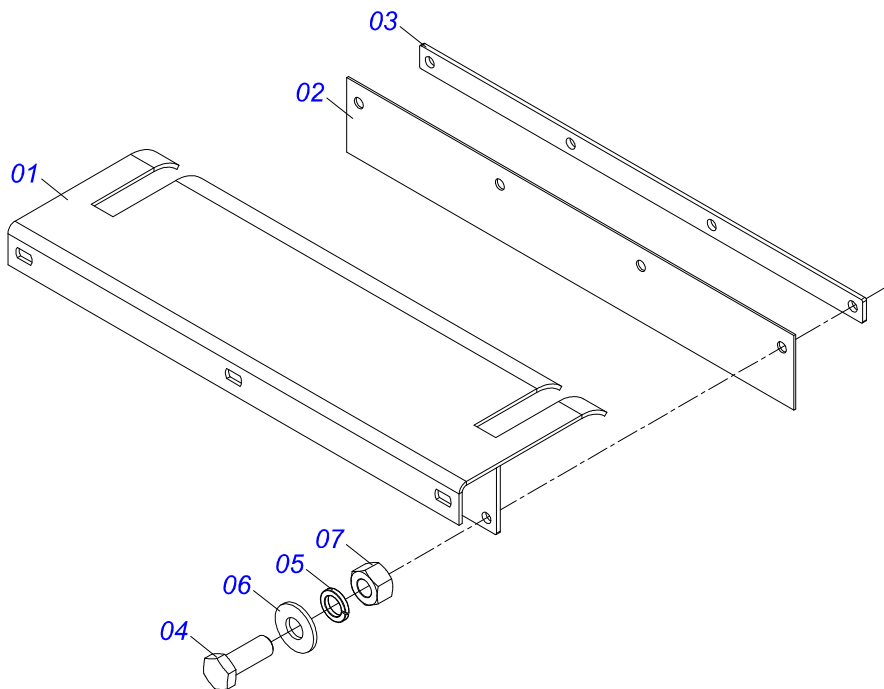


Item	Code	Description	See page	QT
01	0502011954	AGRICULTURAL HOUSING BEARING		01
02	0503011884	BALL BEARING		01
03	0503010691	1/4" GREASE FITTING		01



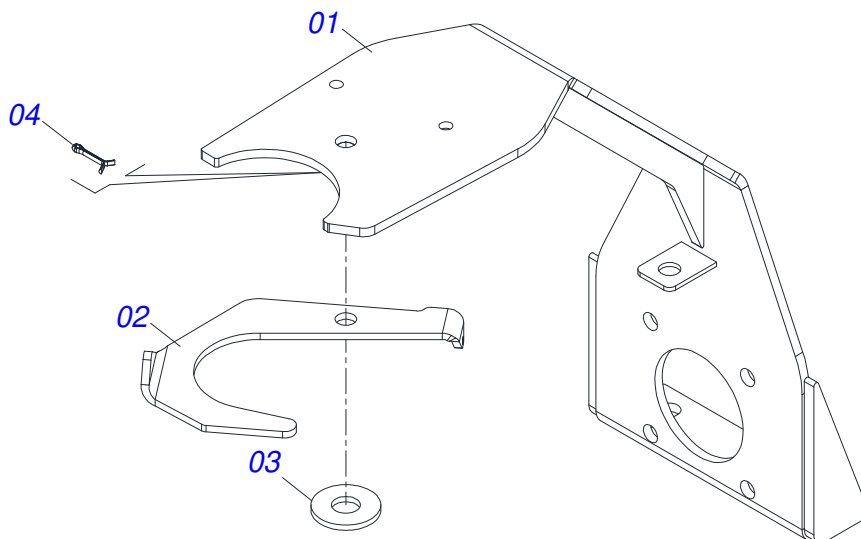
Item	Code	Description	See page	QT
01	0502011050	AGRICULTURAL HOUSING BEARING		01
02	0503011163	1108/UCR BEARING ASSY		01
03	0503010004	1890 GREASE FITTING		01

REAR PROTECTION WITH MINOR PROTECTOR

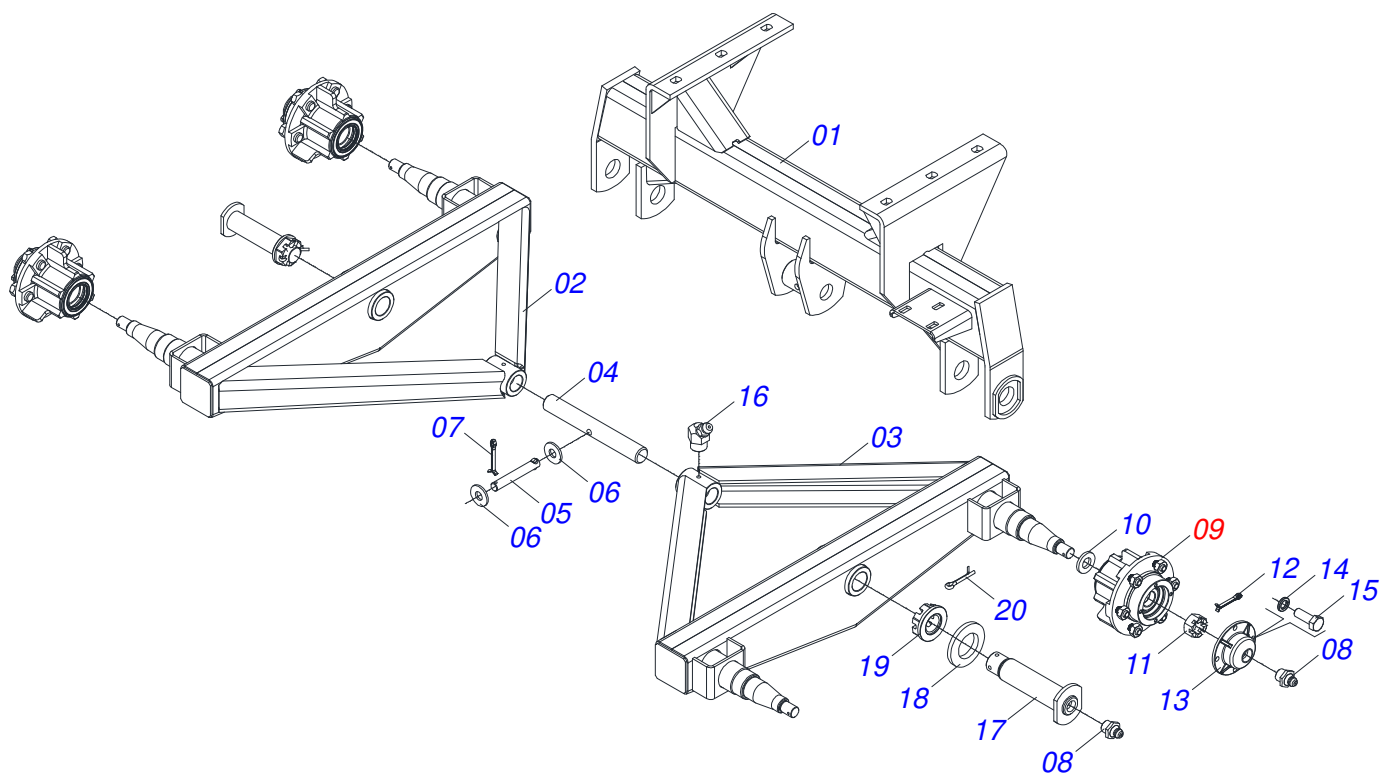


Item	Code	Description	See page	QT
01	0501067379	MAT REAR PROTECTION		01
02	0511014562	PROTECTION SMALLER		01
03	0511016575	RUBBER COVER FIXER		01
04	0503010237	3/8" X 1" BOLT		04
05	0503011443	3/8" SPRING WASHER		04
06	0501010984	FLAT WASHER		04
07	0503010026	3/8" NUT		04

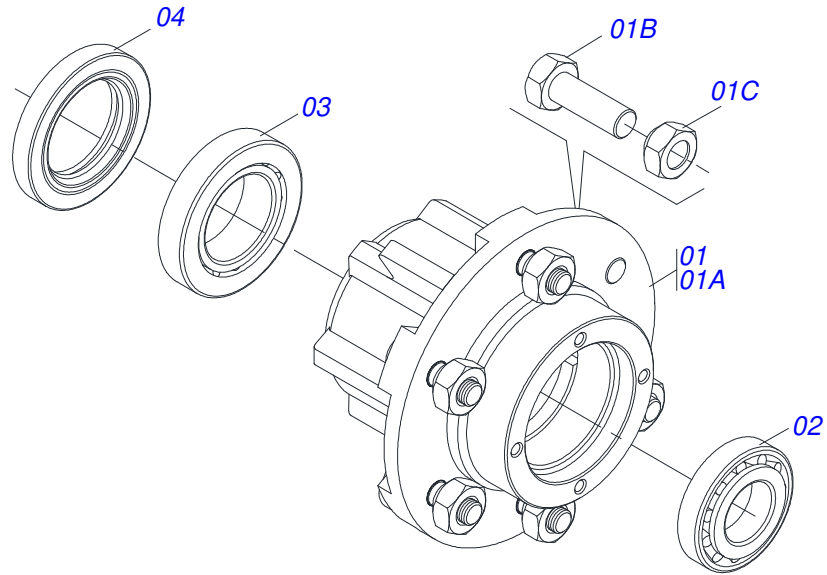
CARDAN SUPPORT WITHOUT SPRING



Item	Code	Description	See page	QT
01	0521068817	SUPPORT SUSTENANCE CARDAN		01
02	0511014066	CARDAN SMALLE SUPPORT		01
03	0511017302	FLAT WASHER		01
04	0503010257	1/8" X 1" COTTERPIN		01

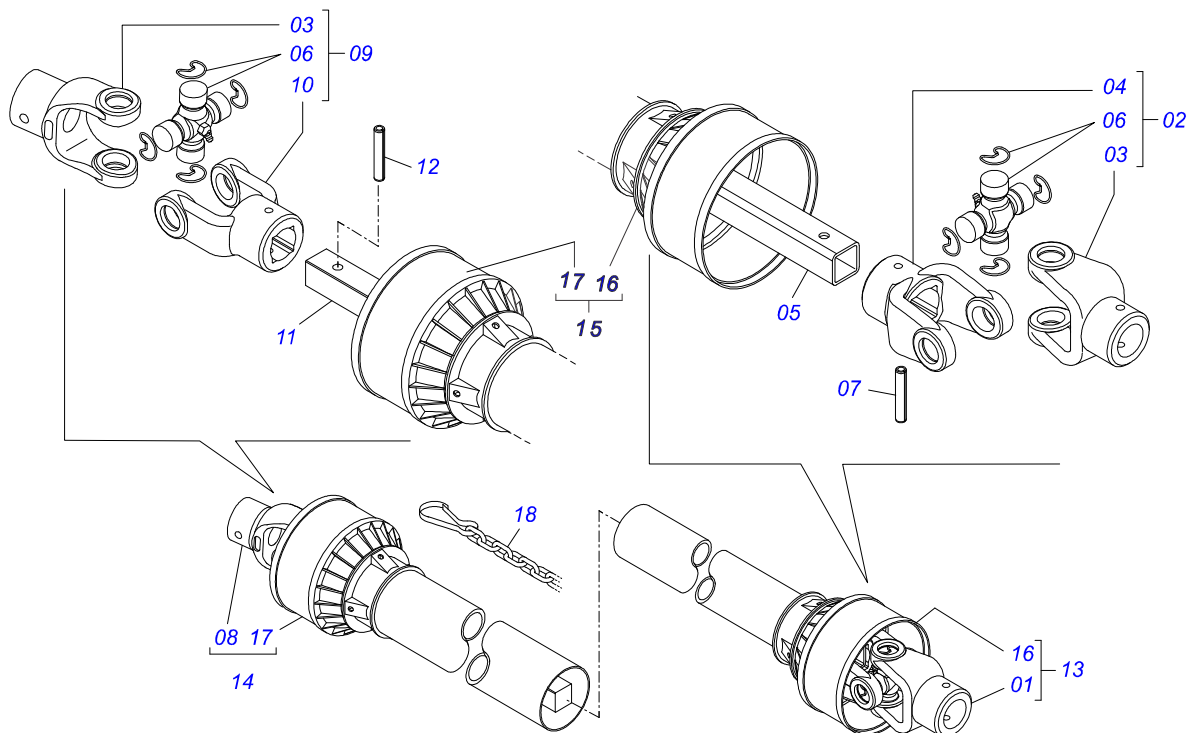


Item	Code	Description	See page	QT
01	0521062814	BELL CRANK SUPPORT FIXATION		01
02	0501069182	RIGHT ROCKER ARM		01
03	0501069183	LEFT ROCKER ARM		01
04	0521011118	COUPLING SHAFT		01
05	0521010553	0.5" X 3" COUPLING SHAFT		01
06	0511017302	FLAT WASHER		02
07	0503010577	3/16" X 1-1/4" COTTERPIN		01
08	0503010002	1800 GREASE FITTING		06
09	0501051142	CARRYING WHEEL HUB	11	04
10	0501016545	FLAT WASHER		04
11	0503030009	1" CASTLE NUT		04
12	0503010131	3/16" X 1-1/2" COTTERPIN		04
13	0502020591	PROTECCION COVER		04
14	0503011444	SPRING WASHER		16
15	0503010358	5/16" X 5/8" BOLT		16
16	0503010003	1845 GREASE FITTING		02
17	0521069952	COUPLING SHAFT		02
18	0501010086	FLAT WASHER		02
19	0503011052	1.1/4" X 0.77" CASTLE NUT		02
20	0503010010	1/4" X 2.1/2" COTTERPIN		02

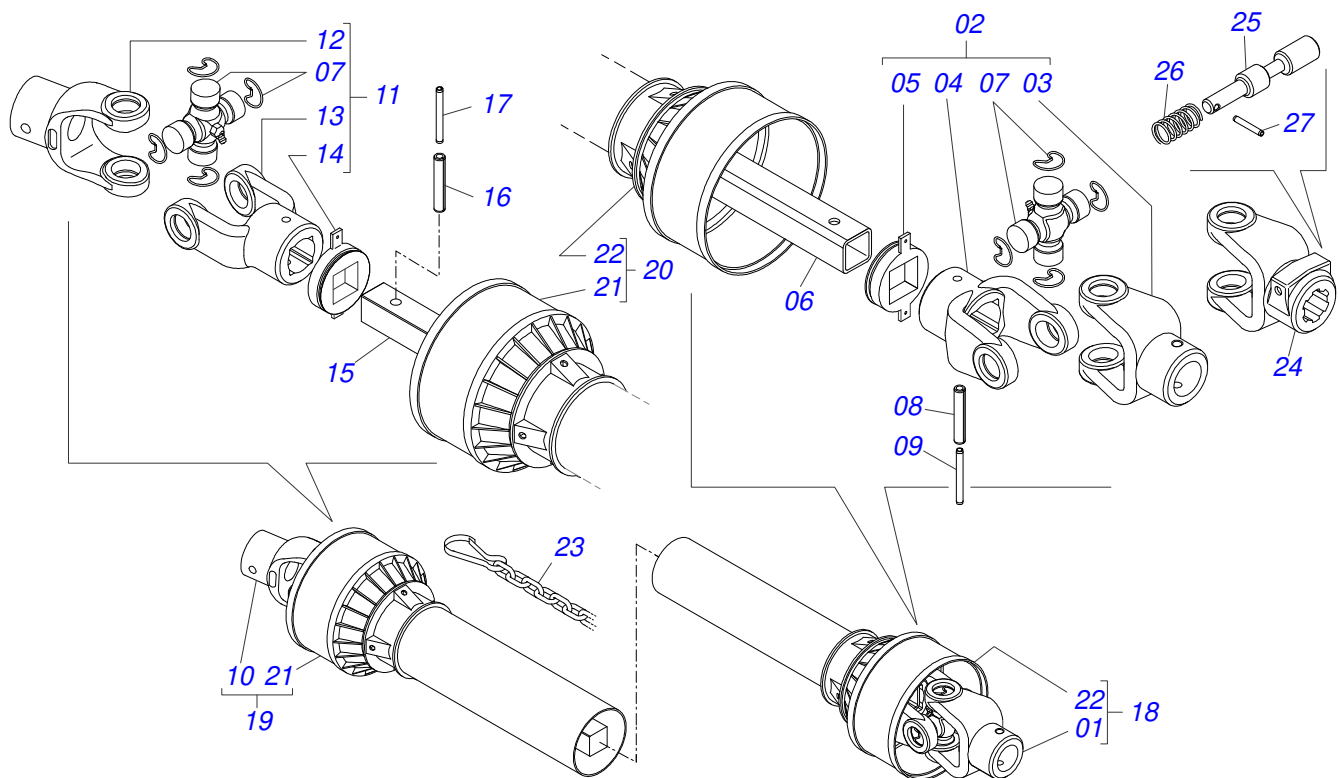


Item	Code	Description	See page	QT
01	0501110728	WHEEL HUB		01
01A	0502011121	CARRYING WHEEL HUB		01
01B	0501010127	9/16" X 1-7/8" LUG BOLT		06
01C	0503010035	9/16" CONIC NUT		06
02	0503010037	30207 ROLLER BEARING		01
03	0503010006	32210 ROLLER BEARING		01
04	0503012928	SEAL		01

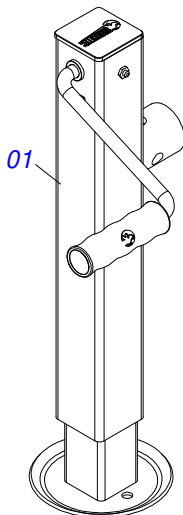




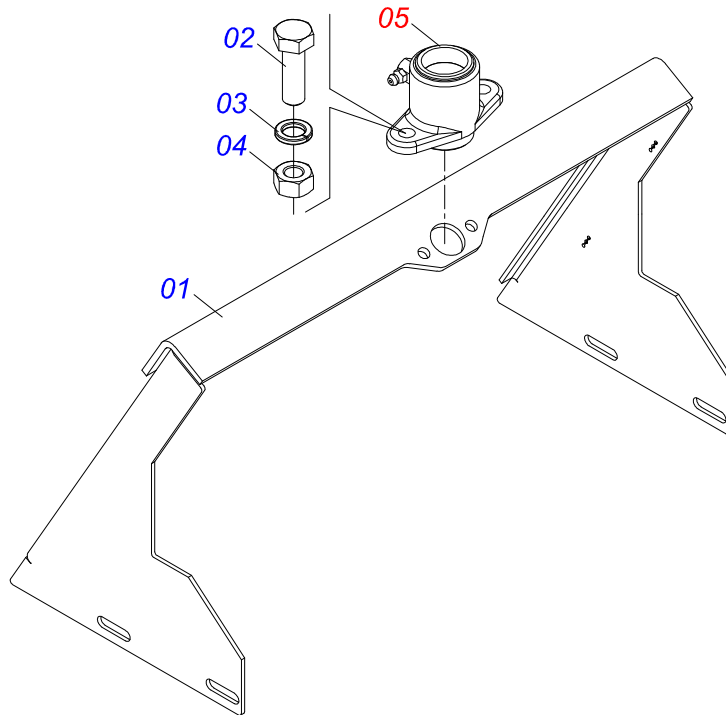
Item	Code	Description	See page	QT
01	0501052166	SLEEVE UNIVERSAL JOINT		01
02	0501051718	UNIVERSAL JOINT		01
03	0502010558	4-20 TERMINAL WITH ROLES		02
04	0502011426	2-20 TERMINAL		01
05	0521013798	0.9" X 35" SQUARE SLEEVE		01
06	0503010835	CARDAN CROSSPIECE		02
07	0503010839	03"X 0.6" SPRING PIN		01
08	0501052167	AXLE UNIVERSAL JOINT		01
09	0501051720	UNIVERSAL JOINT		01
10	0502011427	3-20 TERMINAL		01
11	0521013795	0.9" X 35" SQUARE SHAFT		01
12	0503010301	0.3" X 1.8" SPRING PIN		01
13	0501052168	PROT/SLEEVE UNIVERSAL JOINT		01
14	0501052169	PROT/AXLE UNIVERSAL JOINT		01
15	0503012271	PROTECTION ASSY		01
16	0503012272	PROTECTION FOR UNIV JOINT SLEEVE		01
17	0503012273	PROTECTION FOR UNIV JOINT AND AXLE		01
18	0503012023	CHAIN FOR PROTECTION		02



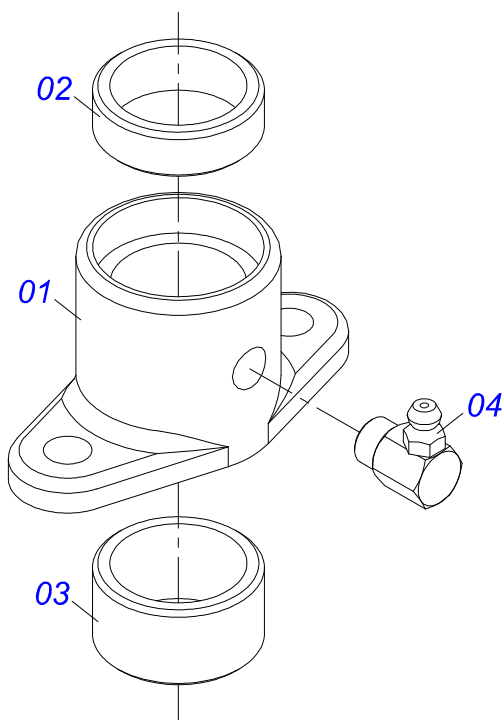
Item	Code	Description	See page	QT
01	0501052176	SLEEVE UNIVERSAL JOINT	01	01
02	0501050265	UNIVERSAL JOINT	01	01
03	0501050333	1-40 TERMINAL WITH HITCH	01	01
04	0502010565	2-40 TERMINAL W/ SH 1.5"/1.5"	01	01
05	0503012069	ADAPTER FOR BUSHING PROTECT	01	01
06	0521013800	16" X 1.4" SQUARE SLEEVE	01	01
07	0503010836	CARDAN CROSSPIECE	02	01
08	0503011069	0.4" X 2.8" SPRING PIN	01	01
09	0503010510	0.2" X 2.6" SPRING PIN	01	01
10	0501052177	AXLE UNIVERSAL JOINT	01	01
11	0501052178	UNIVERSAL JOINT	01	01
12	0502011611	9-40 TERMINAL	01	01
13	0502010566	3-40 TERMINAL WITH SH 1.2"/1.2"	01	01
14	0503012070	ADAPTER FOR AXLE PROTECTION	01	01
15	0521013801	1.2" X 15.7" SQUARE SHAFT	01	01
16	0503010361	SPRING PIN	01	01
17	0503010756	0.2" X 2.4" SPRING PIN	01	01
18	0501052179	PROT/SLEEVE UNIVERSAL JOINT	01	01
19	0501052180	PROT/AXLE UNIVERSAL JOINT	01	01
20	0503012277	PROTECTION ASSY	01	01
21	0503012279	PROTECTION FOR UNIV JOINT AND AXLE	01	01
22	0503012278	PROTECTION FOR UNIV JOINT SLEEVE	01	01
23	0503012023	CHAIN FOR PROTECTION	02	01
24	0502010563	1-40 STRIATED 1.3/8" TERMINAL	01	01
25	0521010638	0.5" X 3.3" QUIC HITCH COUPL SHAFT	01	01
26	0503030518	0.5"X1.0"X 0.1" COMPRESSION SPRING	01	01
27	0503010838	0.1" X 0.8" SPRING PIN	01	01



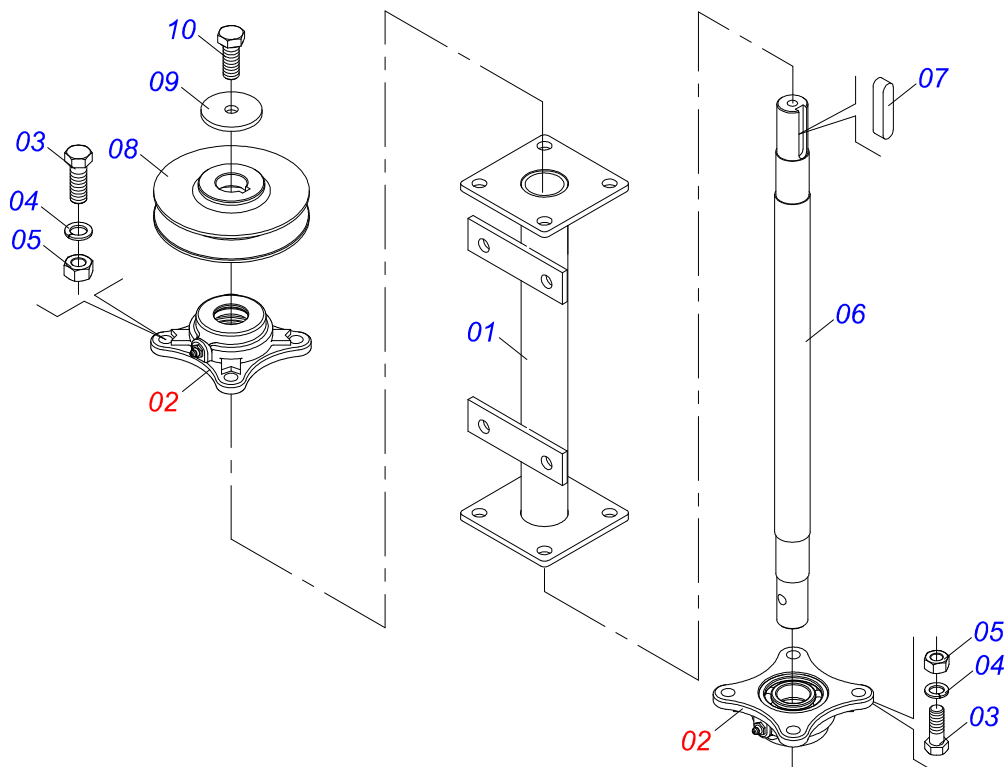
Item	Code	Description	See page	QT
01	0503062157	HEADER JACK		01



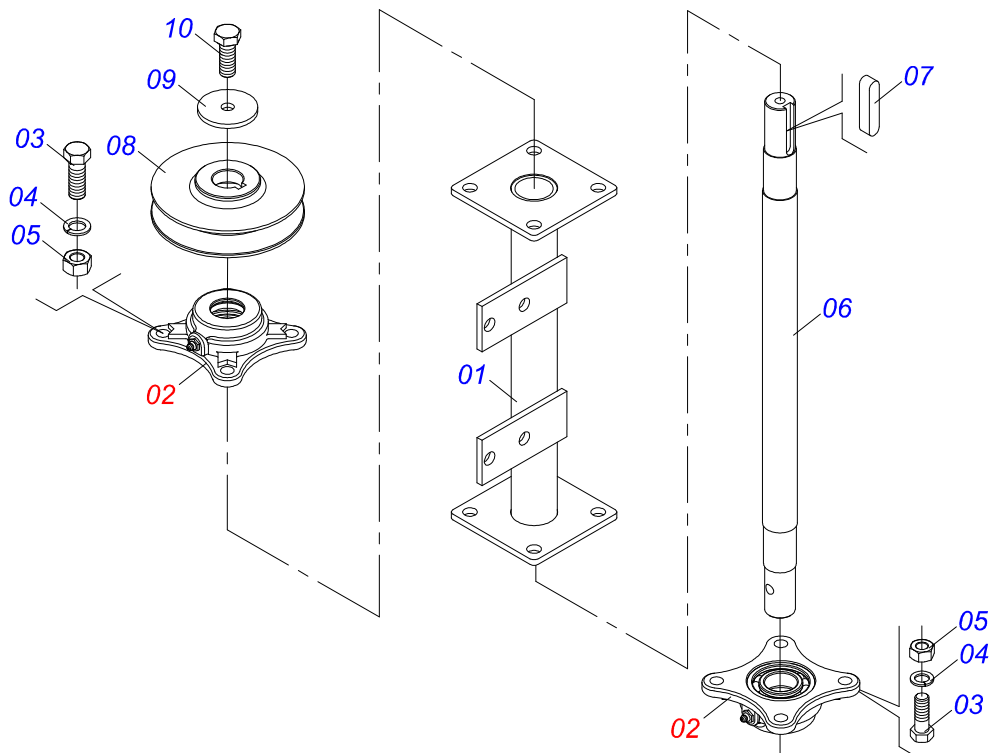
Item	Code	Description	See page	QT
01	0501069841	SLUICE VALVE SUPPORT		01
02	0503010371	5/16" X 1" BOLT		02
03	0503011444	SPRING WASHER		02
04	0503010337	5/16" NUT		02
05	0511059094	SHAFT BEARING THREADED	16	01



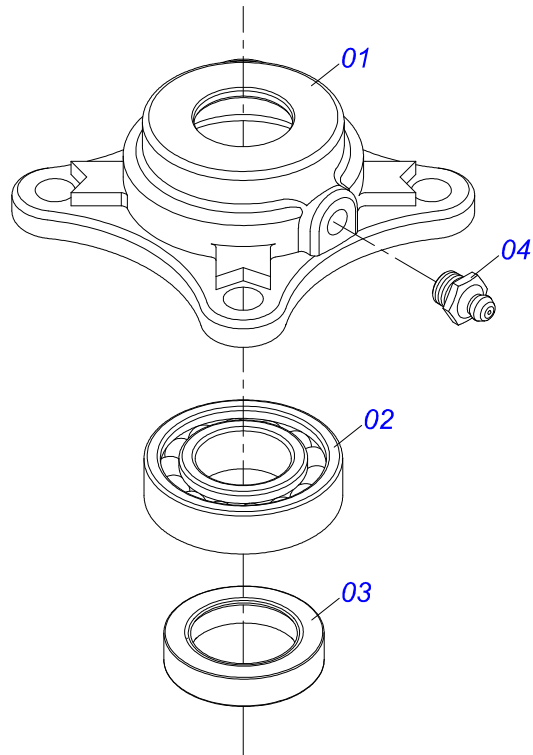
Item	Code	Description	See page	QT
01	0502010581	ROD BEARING		01
02	0521010458	SLEEVE		01
03	0521010457	SLEEVE		01
04	0503010004	1890 GREASE FITTING		01



Item	Code	Description	See page	QT
01	0501067387	DISTRIBUTOR RIGHT SUPPORT DISC		01
02	0501048000	AGRICULTURAL BEARING	19	02
03	0503011102	BOLT 7/16 UNC X 1.1/4 C S G.5 ZN		08
04	0503011446	SPRING WASHER		08
05	0503010244	7/16" NUT		08
06	0511016489	DISTRIBUTOR AXLE CONDUCTOR DISC		01
07	0501010536	KEYWAY SQUARE		01
08	0502011361	REEL 1C 5.5" X 1.1" PULLEY		01
09	0511014052	FLAT WASHER		01
10	0503010355	7/16" X 1" BOLT		01

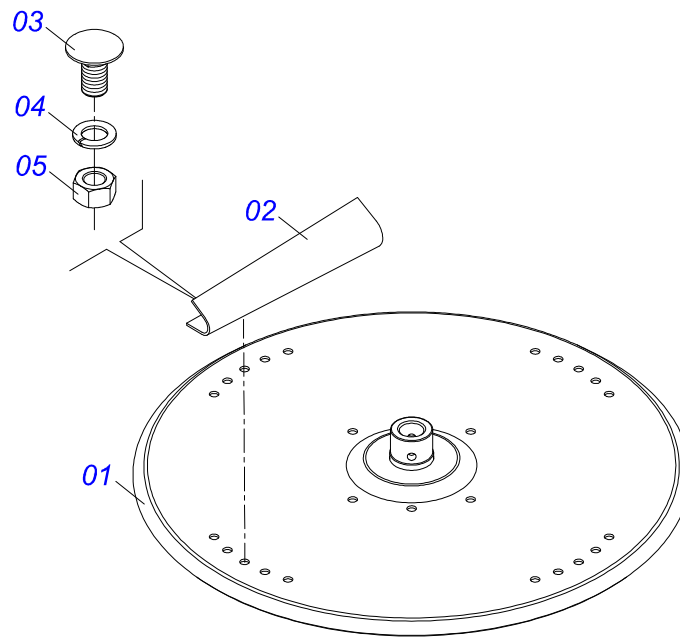


Item	Code	Description	See page	QT
01	0501067388	DISTRIBUTOR LEFT SUPPORT DISC		01
02	0501048000	AGRICULTURAL BEARING	19	02
03	0503011102	BOLT 7/16 UNC X 1.1/4 C S G.5 ZN		08
04	0503011446	SPRING WASHER		08
05	0503010244	7/16" NUT		08
06	0511016489	DISTRIBUTOR AXLE CONDUCTOR DISC		01
07	0501010536	KEYWAY SQUARE		01
08	0502011361	REEL 1C 5.5" X 1.1" PULLEY		01
09	0511014052	FLAT WASHER		01
10	0503010355	7/16" X 1" BOLT		01

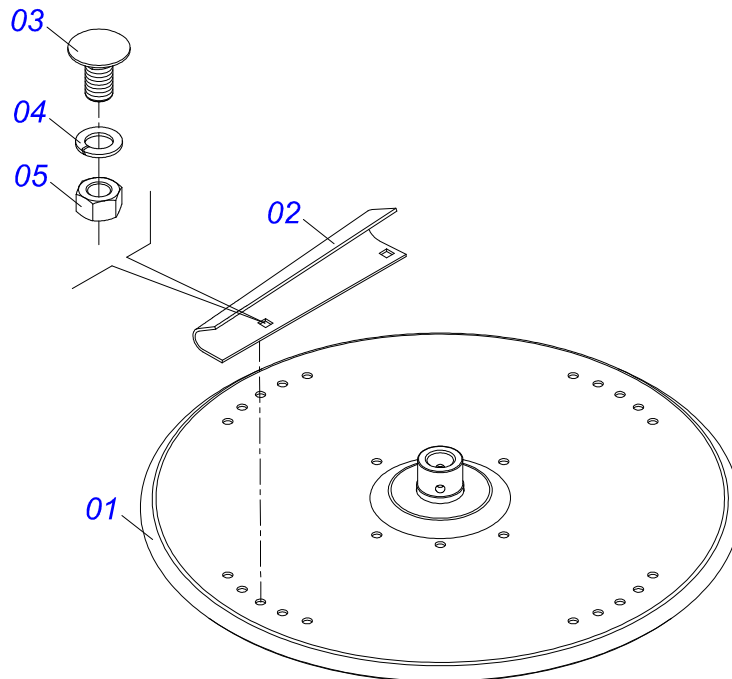


Item	Code	Description	See page	QT
01	0502011442	AGRICULTURAL HOUSING BEARING		01
02	0503010276	6206 BALL BEARING		01
03	0503011865	SEAL		01
04	0503010002	1800 GREASE FITTING		01

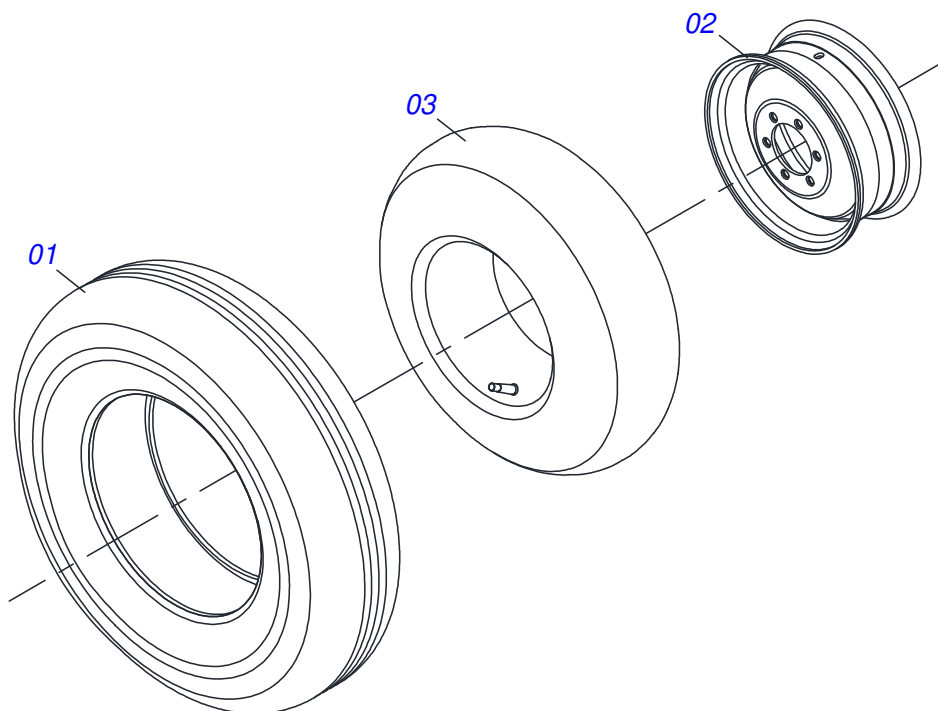




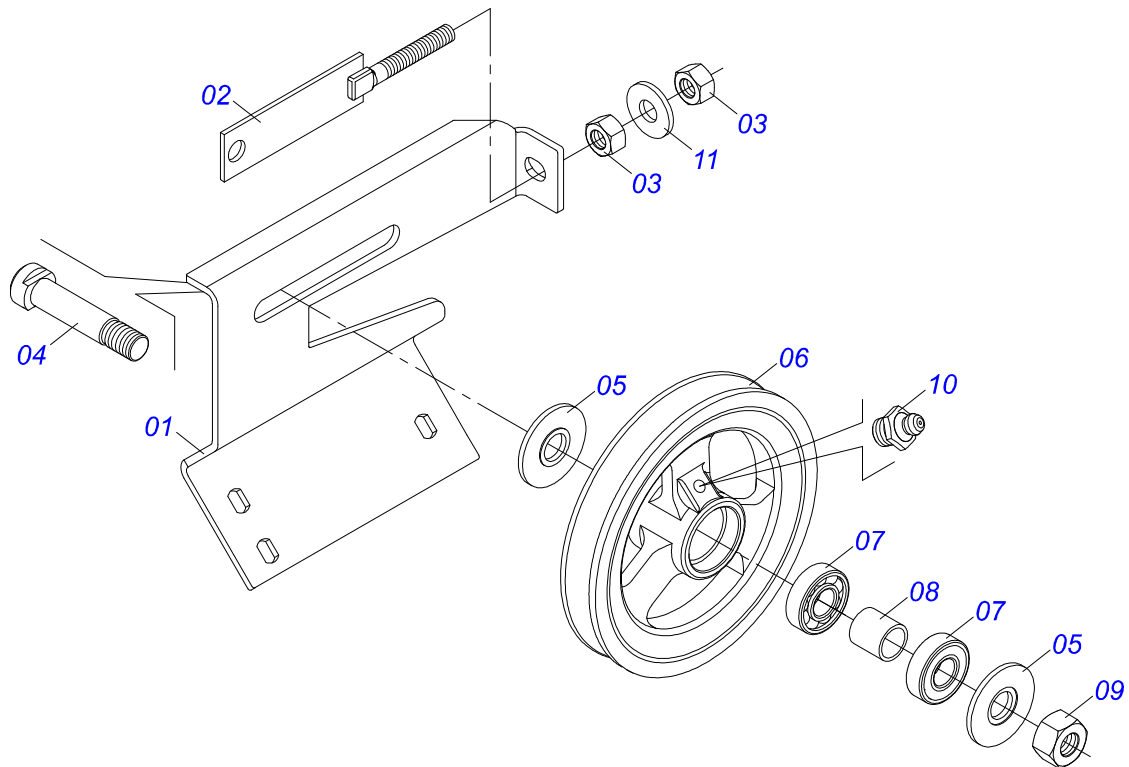
Item	Code	Description	See page	QT
01	0501069605	DISTRIBUTOR DISC		01
02	0521018637	RH FLIP		04
03	0503013029	3/8" X 3/4" BOLT		08
04	0503011443	3/8" SPRING WASHER		08
05	0503010026	3/8" NUT		08



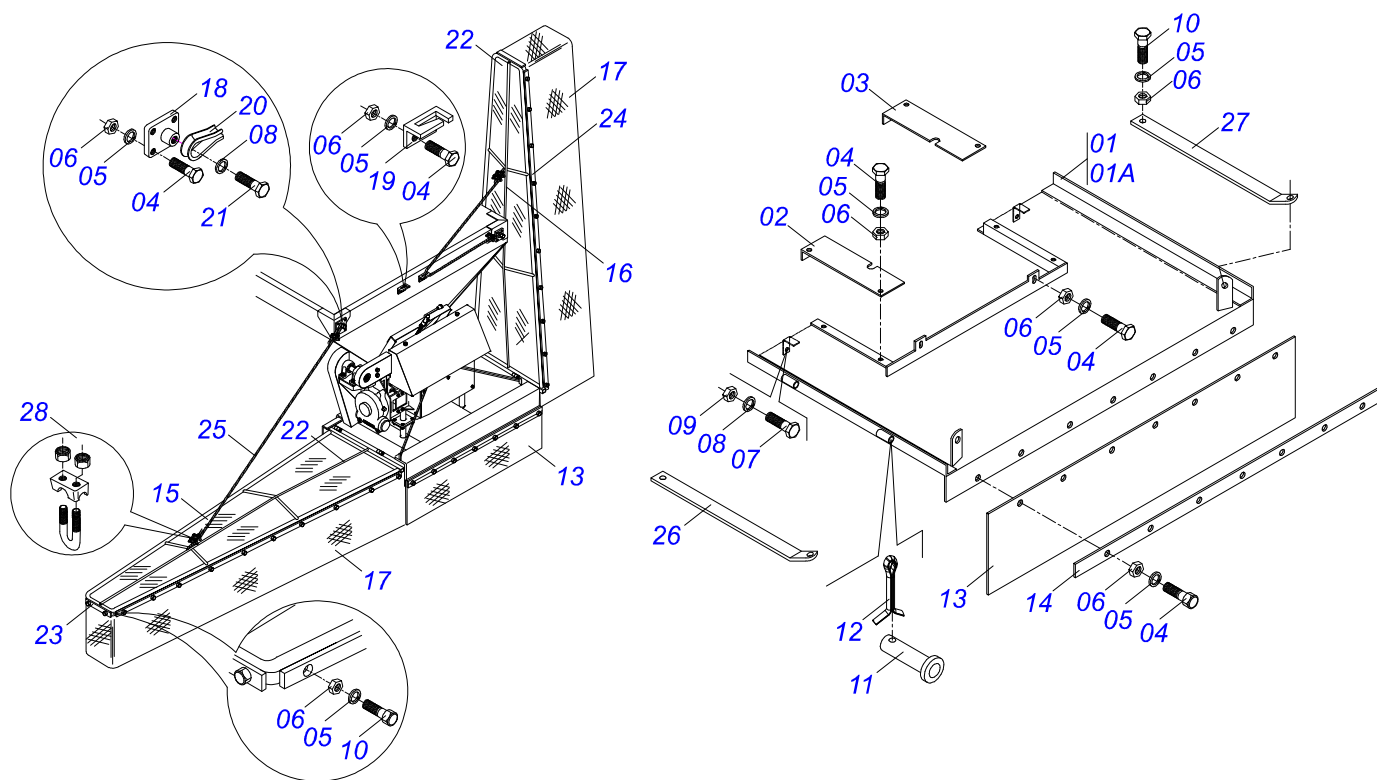
Item	Code	Description	See page	QT
01	0501069605	DISTRIBUTOR DISC		01
02	0521018638	LH FLIP		04
03	0503013029	3/8" X 3/4" BOLT		08
04	0503011443	3/8" SPRING WASHER		08
05	0503010026	3/8" NUT		08



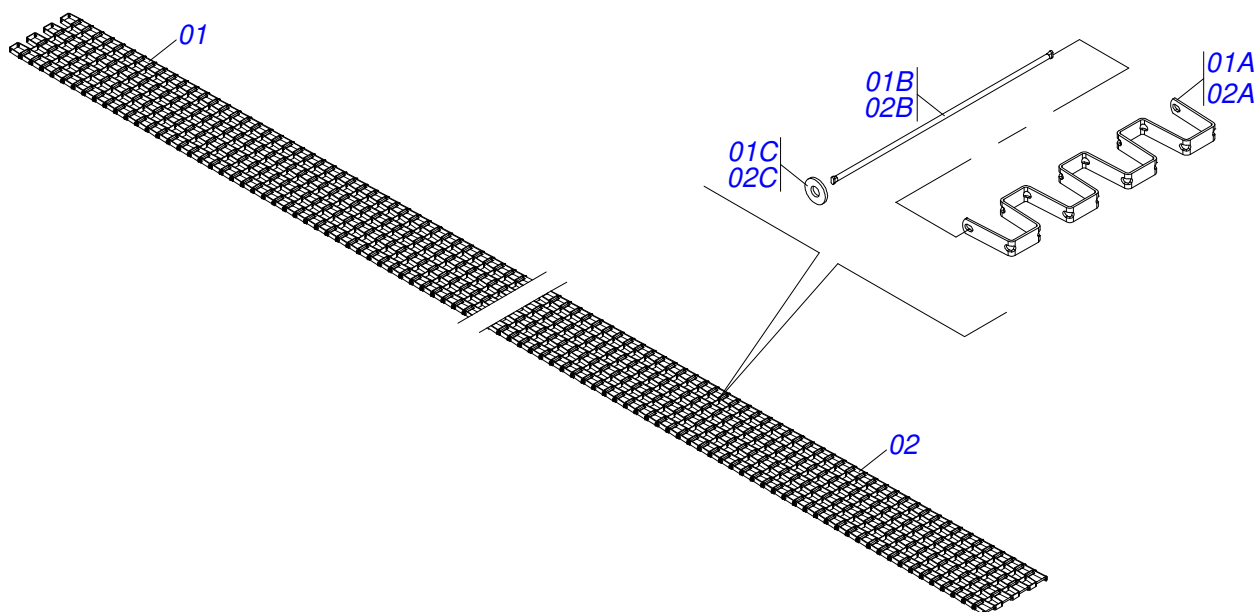
Item	Code	Description	See page	QT
01	0503010120	CANVAS TIRE		01
02	0521062708	WHEEL 5,50 X 16 X 118 X 6F 16,50 X 152,40		01
03	0503010033	7.50 X 16 INNER TIRE		01



Item	Code	Description	See page	QT
01	0501066100	SUPPORT		01
02	0501065968	1C X 8.3 PULLEY TENSIONER		01
03	0503010013	5/8" NUT		02
04	0511012362	TIGHTENER AXLE PULLEY		01
05	0501019288	WASHER SPACER		02
06	0502011366	REEL 1C 8.3" X 1.6" PULLEY		01
07	0503010690	6204 BALL BEARING		02
08	0521010497	0.8" X 1.1" X 1.1" SPACER		01
09	0503010014	3/4" NUT		01
10	0503010002	1800 GREASE FITTING		01
11	0501012140	FLAT WASHER		01



Item	Code	Description	See page	QT
01	0501047695	DAMPER ASSY		01
01A	0501067801	CENTRAL FRAME		01
02	0511017104	RIGHT COVER SIDE		01
03	0511017105	LEFT COVER SIDE		01
04	0503010237	3/8" X 1" BOLT		67
05	0503010025	3/8" SPRING WASHER		71
06	0503010026	3/8" NUT		71
07	0501010063	1/2" X 1-1/2" BOLT		02
08	0503010019	1/2" SPRING WASHER		04
09	0503010060	1/2" NUT		02
10	0503010751	C3/8" X 1.1/4" HEX BOLT G.5		04
11	0511013803	PIN		04
12	0503010131	3/16" X 1-1/2" COTTERPIN		04
13	0511013810	REAR PROTECTION		01
14	0511013804	REAR RIBBON FIXER BLANKET		01
15	0501066442	RIGHT WING		01
16	0501066443	LEFT WING		01
17	0511013808	BLANKET RUBBER		02
18	0501066515	STELL SUPPORT CABLO		02
19	0501066514	STELL GUIDE CABLO		02
20	0503011202	BRACKET		04
21	0503010834	1/2 X 1 BOLT		02
22	0511013809	SUPPORT PROTECTION		02
23	0511013806	FIXER CANVAS RIBBON		02
24	0511013793	FIXER SUPPORT CANVAS		04
25	0511013817	STELL CABLE		02
26	0511017465	ATTACHMENT BAR		01
27	0511017466	ATTACHMENT BAR		01
28	0503010165	5/16" CABLO STEEL STAPLE		08



Item	Code	Description	See page	QT
01	0511050054	MAT SEGMENT		01
01A	0561016633	TRANSPORT MAT BODY		09
01B	0561016632	AXIS UNION MAT		09
01C	0503015148	WASHER		18
02	0511050052	MAT SEGMENT		05
02A	0561016633	TRANSPORT MAT BODY		35
02B	0561016632	AXIS UNION MAT		35
02C	0503015148	WASHER		70





**MARCHESAN**

**Technical Publications | Elaboration and Revision**

LORENA ROCHA ALVES

[www.marchesan.com.br](http://www.marchesan.com.br)

