

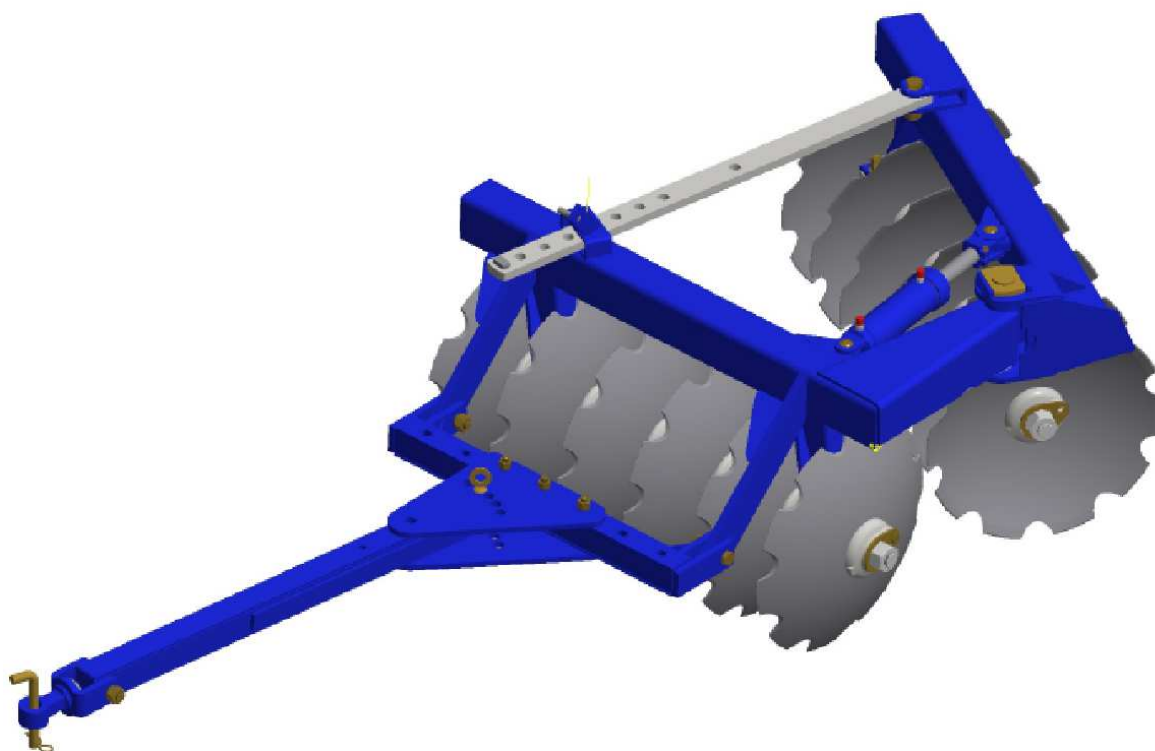
OFFSET DISK HARROW

Code:

0501092749

Product:

GA-PA 32/36/44 DISC CM E DM



Series:

S-1090

Revision:

00

Date Revision:

JUNHO/2020



PRODUCTS

Code	Description
0102010279	GA 32 X 24 X 6,00 DM PA S-1090
0102010314	GA 32 X 26 X 6,00 DM PA S-1090
0102010098	GA 32 X 26 X 6,00 DM EXP S-1090
0102010302	GA 36 X 26 X 6,00 CM PA S-1090
0102010224	GA 36 X 26 X 6,00 DM S-1090
0102010315	GA 36 X 26 X 6,00 DM PA S-1090
0102010099	GA 36 X 26 X 6,00 DM EXP S-1090
0102010362	GA 44 X 26 X 7,50 DM PA TERR S-1090

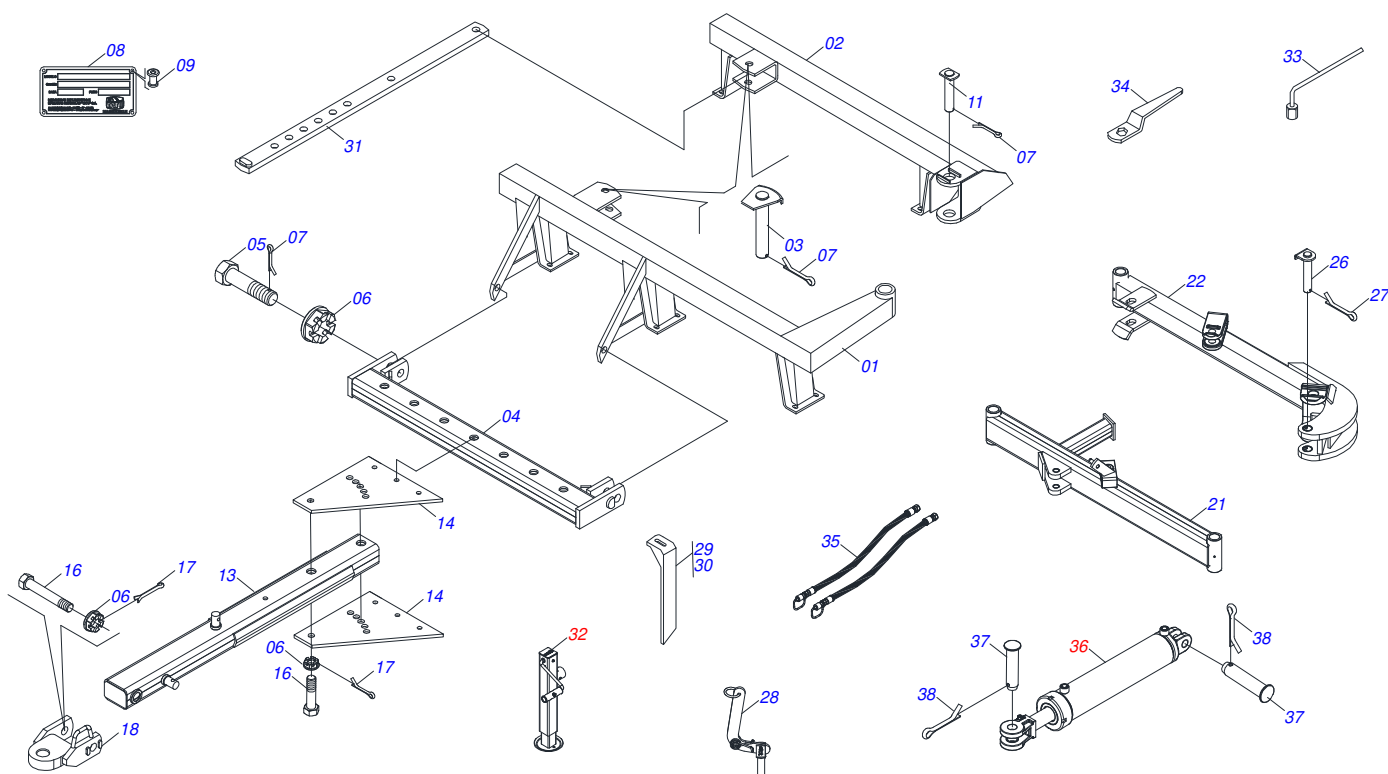
ATTENTION: IMPORTANT

Marchesan S.A. reserves the right to improve and / or modify the technical features of its products, without obligation to do the same with those products already sold and without prior knowledge of the dealer or the consumer.



INDEX

0909099006	FRAME	1
0501042882	GA 28 ASSY DRAWBAR	2
0501043197	8.86" X 1-5/8" OIL BATH BEARING	3
0503062157	HEADER JACK	4
0501047858	ADJUSTMENT LEVER ASSY	5
0909099005	GANG DISC	6
0511059075	CYLINDER CASE	7
0501042787	CYLINDER CASE	8



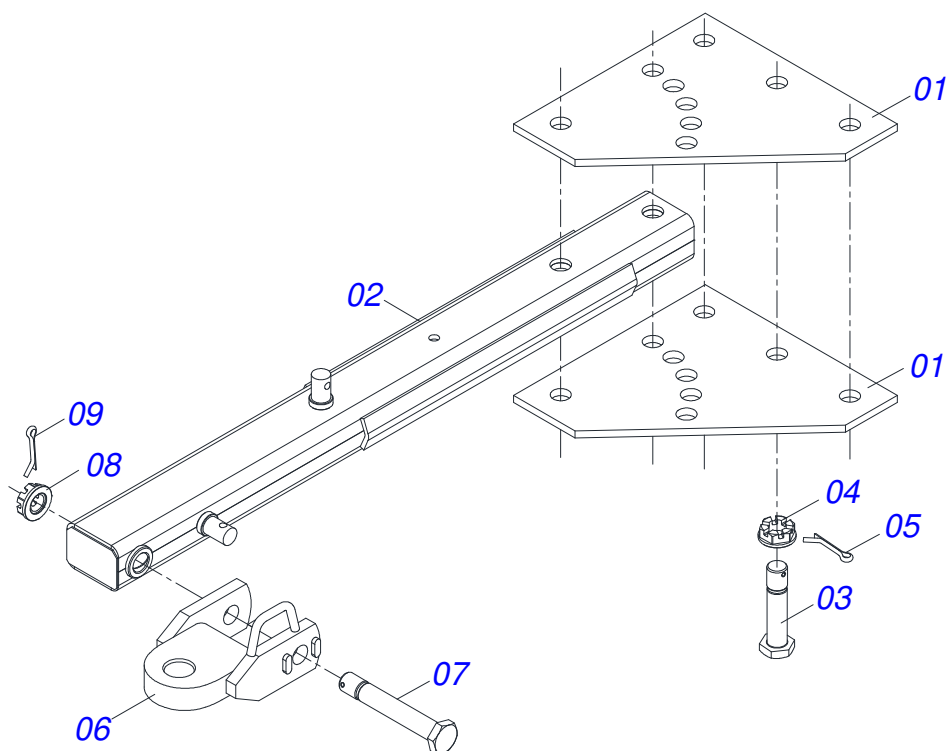
Item	Code	Description	See page	QT
01	0501064298	FRAME FRONT		01
01.	0501064297	FRAME FRONT		01
02	0501064305	REAR FRAME		01
02.	0501064301	REAR FRAME		01
03	0501063253	2" X 11.9" COUPLING SHAFT		01
04	0501064307	OFFSET BAR		01
05	0501816416	BOLT		01
06	0501811301	CASTLE NUT		08
07	0503010010	1/4" X 2.1/2" COTTERPIN		02
08	0503030310	ADHESIVE		01
09	0503010001	3.2 X 5.5 RIVET		04
10	0503010073	3/8 X 3-1/2 COTTERPIN		03
11	0501065487	2.4" X 123" COUPLING SHAFT		01
12	0501063253	2" X 11.9" COUPLING SHAFT		01
13	0501042882	GA 28 ASSY DRAWBAR	2	01
14	0501010272	UPPER/LOWER PLATE		02
15	0501060299	DRAWBAR ASSY		01
16	0501810295	BOLT		05
17	0503010010	1/4" X 2.1/2" COTTERPIN		06
18	0501060317	TRACTOR HITCH		01
19	0501816415	BOLT		01
20	0501810295	BOLT		01
21	0501064632	FRONT STABIL BAR		01
22	0501064633	REAR STABILIZER BAR		01
23	0503011432	1" X 4" BOLT		01
24	0503010012	1" SPRING WASHER		01
25	0501010059	1.5/8 NUT		01
26	0501062195	37,5 X 182 - JUNCTION SHAFT		01
27	0503810534	COTTERPIN		01
28	0501047858	ADJUSTMENT LEVER ASSY	5	01
29	0501064167	REAR SCRAPER		11



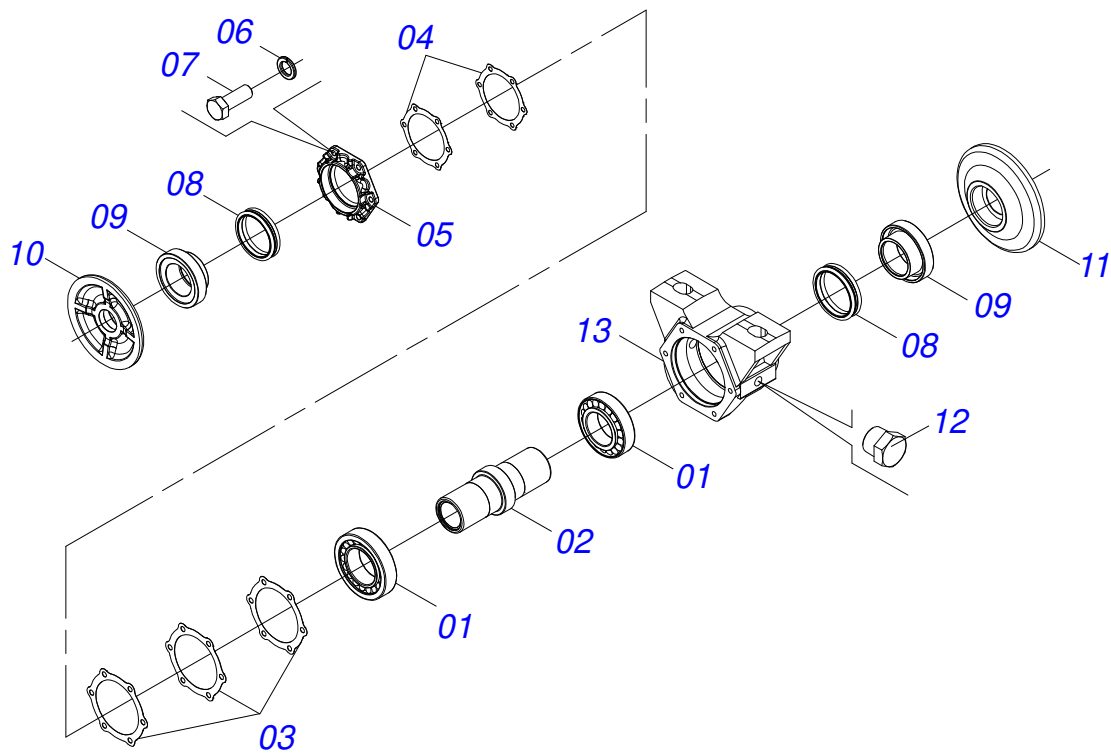
FRAME

0909099006

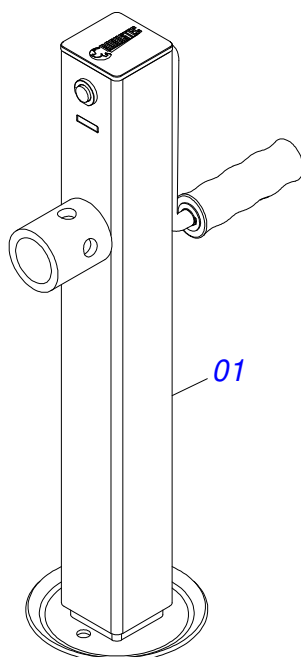
Item	Code	Description	See page	QT
30	0501064168	REAR SCRAPER		11
31	0501063467	ADJUSTMENT BAR		01
32	0503062157	HEADER JACK	4	01
33	0503016140	3/4" WRENCH CABLE CYLINDRICAL		01
34	0501011431	1-3/4" GANG BOLT WRENCH		02
35	0501080363	3/8" X 177" TR-TM HOSE ASSY		01
36	0511059075	CYLINDER CASE	7	01
36.	0501042787	CYLINDER CASE	8	01
37	0501047867			02
38	0503010523	1/4" X 2" COTTERPIN		02



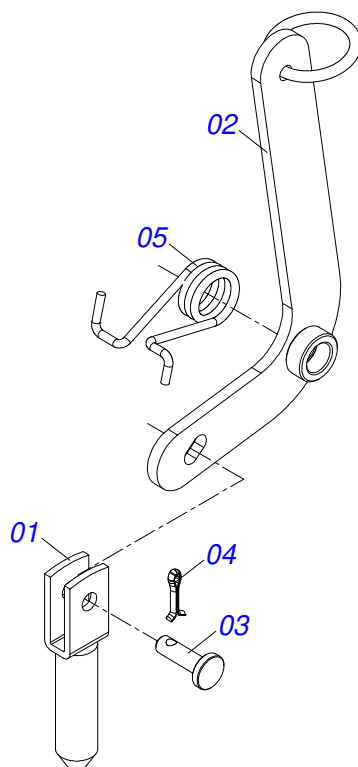
Item	Code	Description	See page	QT
01	0501010272	UPPER/LOWER PLATE		02
02	0501060299	DRAWBAR ASSY		01
03	0501010295	1-1/2" X 6.9" BOLT		05
04	0501011301	1.1/2 UNC 6FPP 2.5/16 NUT		05
05	0503010010	1/4" X 2.1/2" COTTERPIN		05
06	0501060317	TRACTOR HITCH		01
07	0501016415	1-1/2" X 9.6" BOLT		01
08	0501011301	1.1/2 UNC 6FPP 2.5/16 NUT		01
09	0503010010	1/4" X 2.1/2" COTTERPIN		01



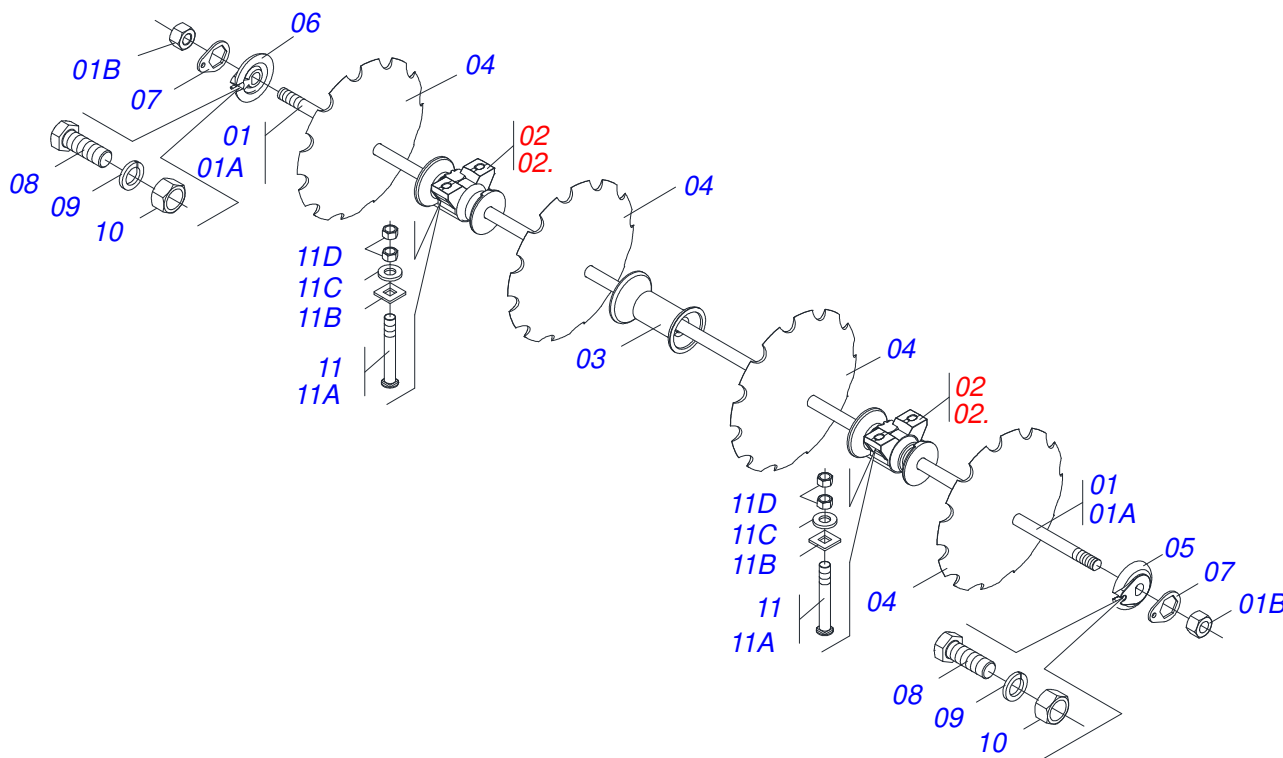
Item	Code	Description	See page	QT
001	0503010005	32212 ROLLER BEARING		02
002	0502010899	AXLE CM/DM		01
003	0503030030	5.6" X 4.4" X 0.01" GASKET		03
004	0503030685	5.5" X 4.4" X 0.003" GASKET		02
005	0502020161	WEAR PLATE BEARING		01
006	0503011443	3/8" SPRING WASHER		06
007	0503010237	3/8" X 1" BOLT		06
008	0503030027	DUO-CONE SEAL		02
009	0502040287	SEAL RETAINER		02
010	0502040239	OUTER FLANGE		01
011	0502040240	INNER FLANGE		01
012	0503010856	OIL PLUG		02
013	0502020481	HOUSING DM		01



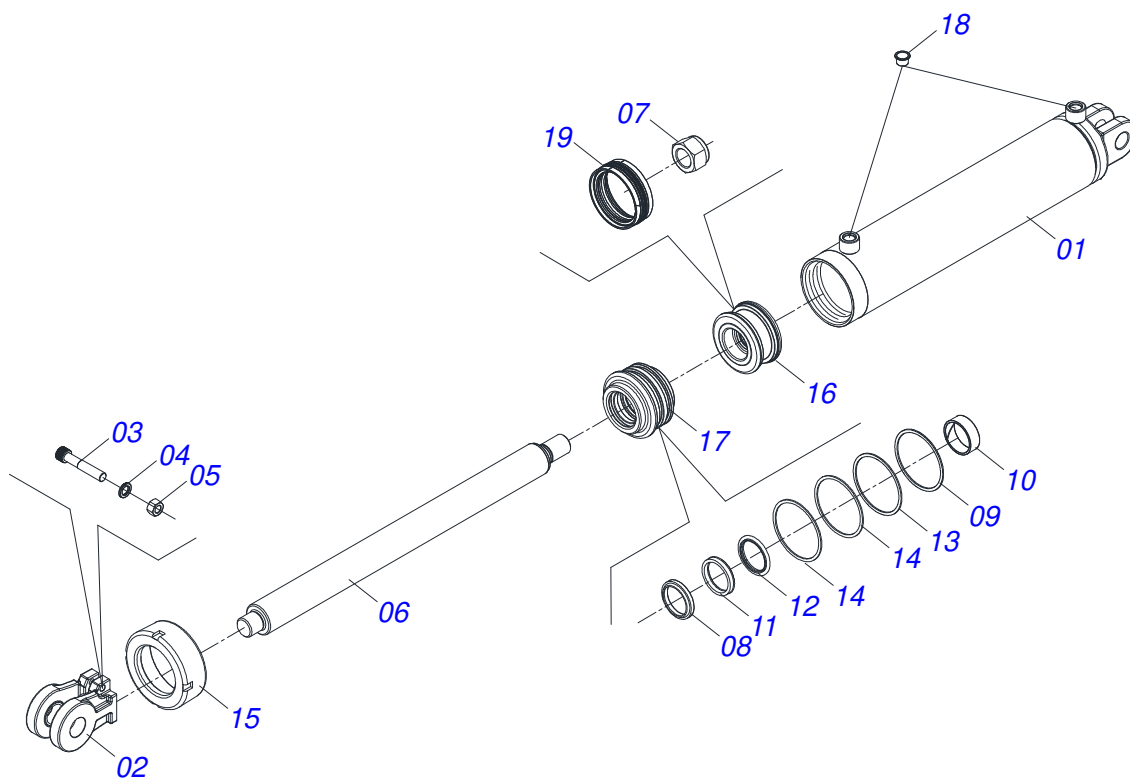
Item	Code	Description	See page	QT
01	0503062157	HEADER JACK	4	01



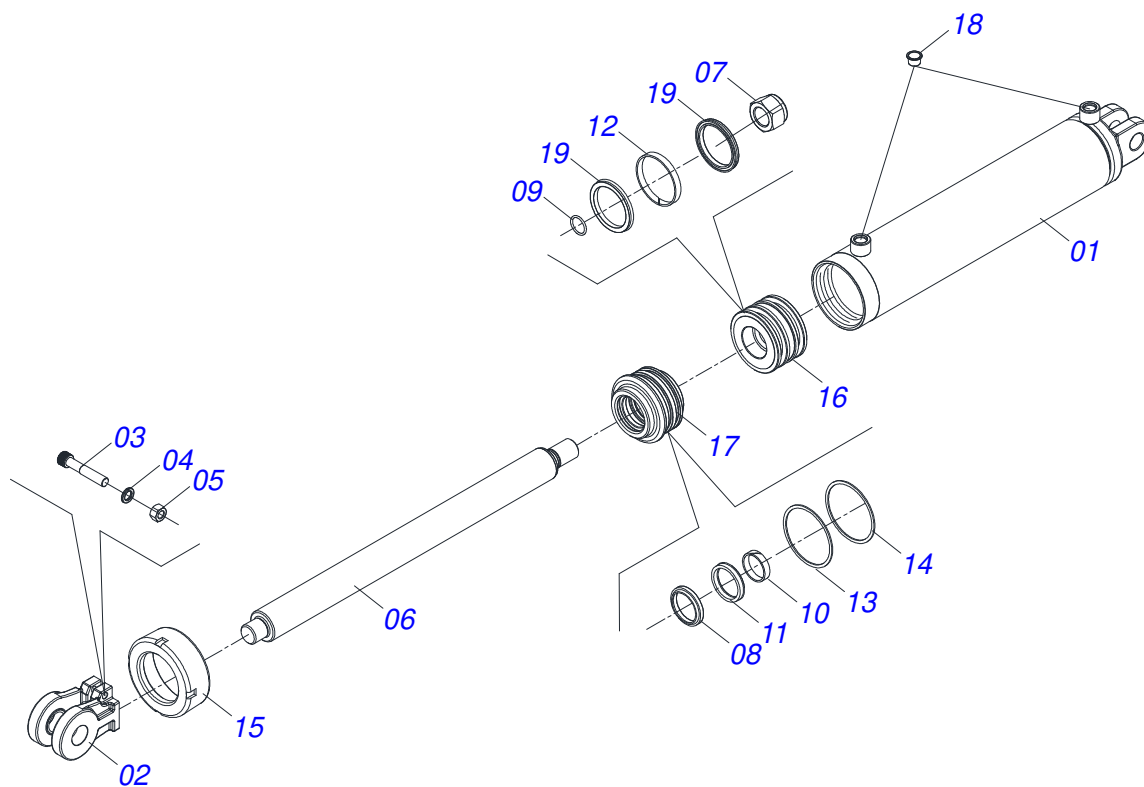
Item	Code	Description	See page	QT
01	0501060185	ADJUSTMENT LOCK		01
02	0501068981	ADJUSTMENT LEVER		01
03	0521010624	0.4" X 1.5" COUPLING SHAFT		01
04	0503010071	3/16" X 1" COTTERPIN		01
05	0503030025	1.4" X 0.2" TORSION SPRING		01



Item	Code	Description	See page	QT
01	0501046855	1-5/8" X 52" AXLE WITH NUTS 2-3/4		06
01A	0501046853	1-5/8" X 43" AXLE WITH NUTS 2-3/4		04
01B	0502040640	1.5/8" 2.3/4" NUT		02
02	0501043085	CM GX 8.86" 1-1/8" BEARING ASSY		12
02.	0501043197	8.86" X 1-5/8" OIL BATH BEARING	3	12
03	0502010626	8.9" 1-5/8" SPACER		18
04	0602033005	26" X 0.2" NOTCHED DISC BLADE		36
04.	0602033005	26" X 0.2" NOTCHED DISC BLADE		18
05	0502011048	1-5/8" EXTERNAL AXLE WASHER		06
06	0502011047	1-5/8" INNER AXLE WASHER		06
07	0511014339	1-5/8" 2.8" NUT LOCK		12
08	0503010232	5/8" X 1.3/4" BOLT		12
09	0503010027	5/8" SPRING WASHER		12
10	0503010013	5/8" NUT		12
11	0511040034	3/4" X 3-1/4" BOLT ASSY		24
11A	0501017303	3/4" X 3-1/4" BOLT		24
11B	0501010949	3/4" SQUARE WASHER		24
11C	0501010322	FLAT WASHER		24
11D	0503010014	3/4" NUT		48



Item	Code	Description	See page	QT
01	0501064258			01
02	0502040747	32.54 CLEVIS CLAMP		01
03	0503011094	3/8" X 2" BOLT		01
04	0503010025	3/8" SPRING WASHER		01
05	0503010026	3/8" NUT		01
06	0581010012			01
07	0503010817	1.1/4" SELF LOCKING NUT		01
08	0503010039	D-2000 SCRAPER RING		01
09	0503018029	2-217 O-RING		01
10	0503018025	RING GUIDE		01
11	0503018026	1870-2000-375 B GASKET		01
12	0503018024	RING BS		01
13	0503010338	2-342 N 3006-9B O-RING		02
14	0503011061	8-342 BACK-UP RING		02
15	0502012822	101.60 END CAP		01
16	0502012820	50.80 X 101.60 PISTON		01
17	0502012821	50.80 X 101.60 RING SUPPORT		01
18	0503030384	CON PLUG N-001		02
19	0503015633	SELEMASTER SEALING		01



Item	Code	Description	See page	QT
01	0501064258			01
02	0502040747	32.54 CLEVIS CLAMP		01
03	0503011094	3/8" X 2" BOLT		01
04	0503010025	3/8" SPRING WASHER		01
05	0503010817	1.1/4" SELF LOCKING NUT		01
06	0501018530	2" X 26" TURNBUCKLE		01
07	0503010026	3/8" NUT		01
08	0503010039	D-2000 SCRAPER RING		01
09	0503010345	2-218 N 3006-9B O'RING		01
10	0503010994	W2-4000-500 PK RING G.E		01
11	0503010991	1870-2000-375-B GASKET		01
12	0503010952	W2-2250-500 RING		01
13	0503010338	2-342 N 3006-9B O'RING		01
14	0503011061	8-342 BACK-UP RING		01
15	0502010017	4" HEAD		01
16	0502010992	2.0" X 4.0" PISTON		01
17	0502010778	2" X 4.2" RING SUPPORT		01
18	0503030384	CON PLUG N-001		02
19	0503010043	PACKING 3750-3250		02



www.marchesan.com.br



Technical Publications | Elaboration and Revision
LORENA ROCHA ALVES