

**SUBSOILER PLOW**

**AST/MATIC E 450 11/13H DC RD**  
**AST/MATIC E 450 11/13H DC RD**

**Code:** 0501092734  
**Series:** S-0400  
**Revision:** 00  
**Revision Date:** MAY/2020

# **PARTS CATALOGUE**



**MARCHESAN**



# PRODUCTS

Code	Working Width	Description
0101170145		AST/MATIC E 450 13/11H DC RD S-0400
0101170062		AST/MATIC E 450 13H DC RD S-0400

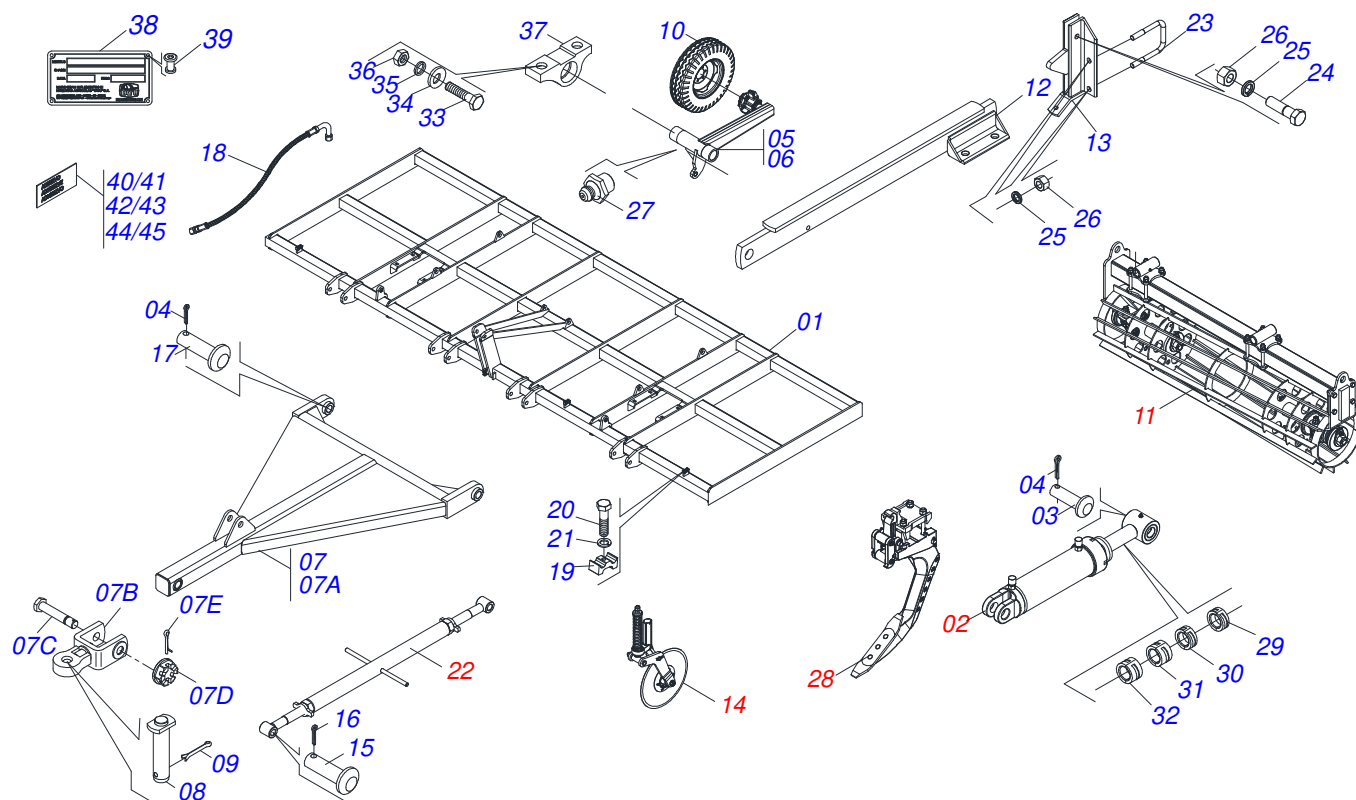
## ATTENTION: IMPORTANT

Marchesan S.A. reserves the right to improve and/or modify the technical features of its products, without obligation to do the same with those products already sold and without prior knowledge of the dealer or the customer. The photos are only illustrative.



# INDEX

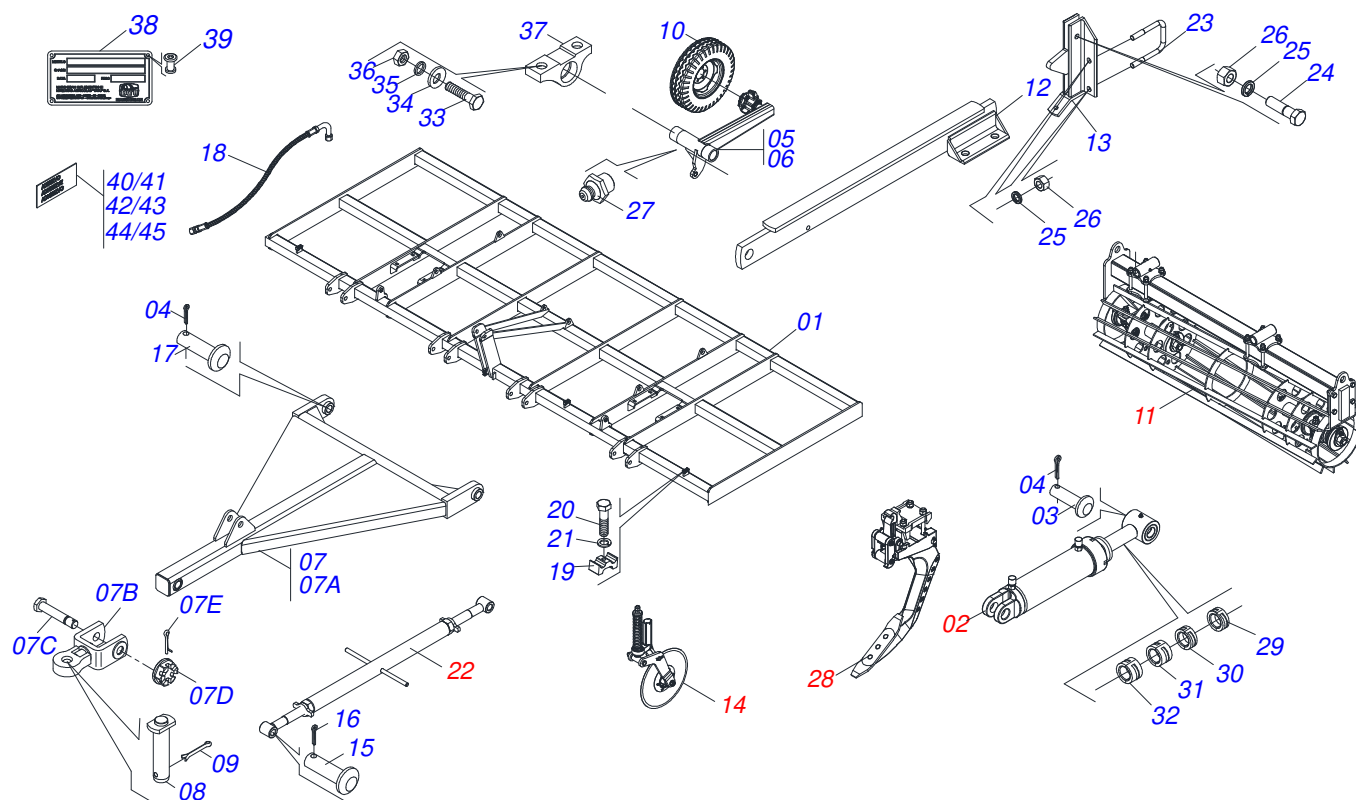
0909098971	FRAME 11H	.....	1
0909098972	FRAME 13H	.....	2
0501051007	RIGHT CARRYING-WHEELS	.....	3
0501051008	LEFT CARRYING-WHEELS	.....	4
0501110563	LEFT PIVOT BEARING WITH SLEEVE	.....	5
0501110568	RIGHT PIVOT BEARING WITH SLEEVE	.....	6
0521045631	HYDRAULIC CYLINDER	.....	7
0521045632	HYDRAULIC CYLINDER	.....	8
0511040026	DRAWBAR ASSY	.....	9
0501055244	CAGE ROLLER ASSEMBLY	.....	10
0501055243	CAGE ROLLER ASSEMBLY	.....	11
0503062010	750 X 16-12L ASSY WHEEL AND TIRE	.....	12
0501052882	SHANKS SYSTEM WITHOUT SPRING	.....	13
0501052930	ESTABILIZER DRAWBAR ASSY	.....	14
0501056926	SUPPORT WITH BLADE DISC	.....	15
0909098912	HYDRAULIC CIRCUIT	.....	16



Item	Code	Description	See page	QT
01	0511061907	FRAME		01
02	0521045631	HYDRAULIC CYLINDER	7	01
02.	0521045632	HYDRAULIC CYLINDER	8	01
03	0521012538	1.2" X 3.5" COUPLING SHAFT		04
04	0503010523	1/4" X 2" SPLIT PIN		08
05	0501051008	LEFT CARRYING-WHEELS	4	01
06	0501051007	RIGHT CARRYING-WHEELS	3	01
07	0511040026	DRAWBAR ASSY	9	01
07A	0511062392	DRAWBAR		01
07B	0501069684	TRACTOR HITCH		01
07C	0501017291	1-1/2" X 8.1" BOLT		01
07D	0501011301	1.1/2" UNC 6FPP 2.5/16" NUT		01
07E	0503010010	SPLIT PIN 1/4" X 2.1/2"		01
08	0521812538	COUPLING SHAFT		01
09	0503010523	1/4" X 2" SPLIT PIN		01
10	0503062010	750 X 16-12L ASSY WHEEL AND TIRE	12	02
11	0501055244	CAGE ROLLER ASSEMBLY	10	02
11.	0501055243	CAGE ROLLER ASSEMBLY	11	01
12	0511065378	BREAK ROLLER ARM		06
13	0501068437	BREAK ROLLER SUPPORT FIXATION		06
14	0501053706	SUPPORT WITH BLADE DISC		13
15	0511011887	COUPLING SHAFT		02
16	0503010571	1/4" X 1.1/2" SPLIT PIN		08
17	0521012536	COUPLING SHAFT		02
18		HYDRAULIC CIRCUIT	16	
19	0502012702	BODY SUPPORT CLAMP		03
20	0503012555	SCREW 7/16 UNC X 2 CS RT G.7 ZN		03
21	0503010180	7/16" SPRING WASHER		03
22	0501052930	ESTABILIZER DRAWBAR ASSY	14	01
23	0521014574	3/4" FASTENE		38



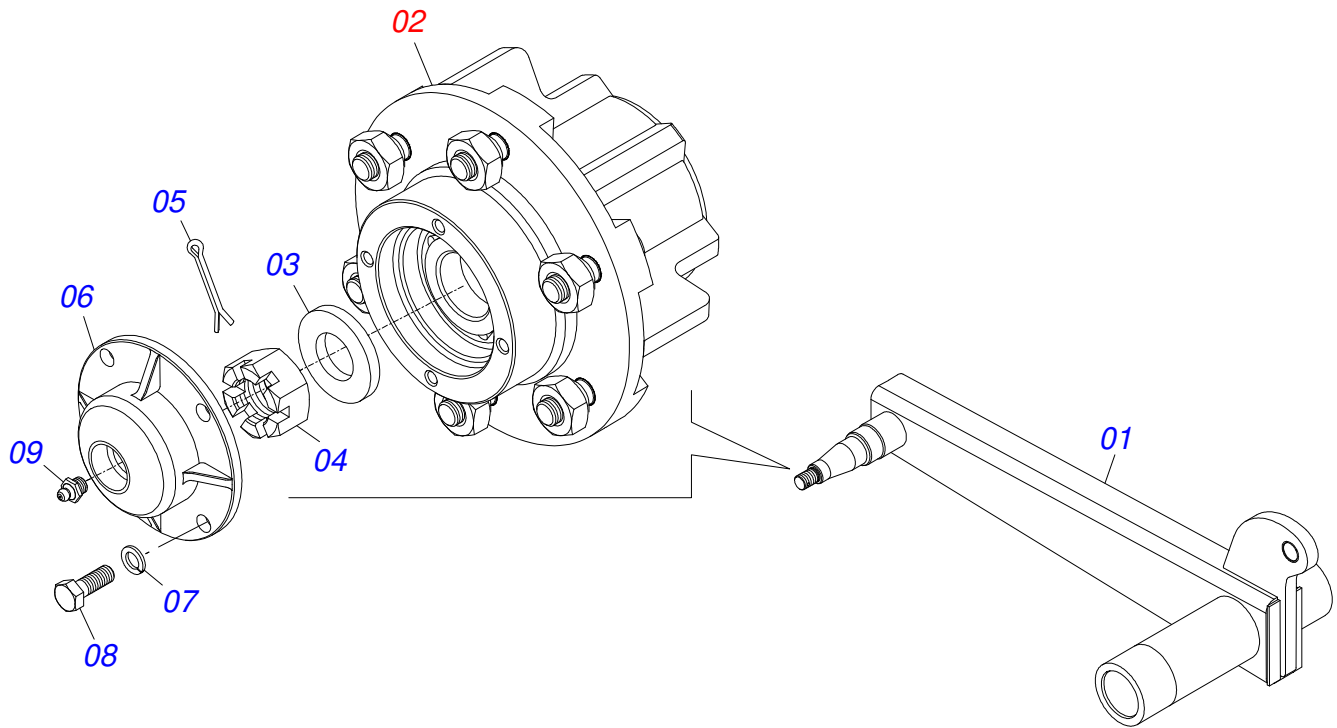
Item	Code	Description	See page	QT
24	0501010827	3/4" X 2-3/4" BOLT		06
25	0503010023	3/4" SPRING WASHER		94
26	0503010014	3/4" ZN G.5 (HEAVY) UNC HEX NUT		94
27	0503010002	1800 GREASE FITTING		04
28	0511043789	SHANKS SYSTEM ASSY		11
29	0501047895	25 ROD STOP		01
30	0501047885	30 ROD STOP		01
31	0501047886	35 ROD STOP		01
32	0501047887	40 ROD STOP		01
33	0503010901	3/4UNC 3.1/2 BOLT		08
34	0501010322	20,50 X 46 X 4,00 ZN FLAT WASHER		08
35	0503011442	3/4" SPRING WASHER		40
36	0503010014	3/4" ZN G.5 (HEAVY) UNC HEX NUT		40
37	0501110563	LEFT PIVOT BEARING WITH SLEEVE	5	02
37.	0501110568	RIGHT PIVOT BEARING WITH SLEEVE	6	02
38	0503034003	61 X 118 SERIAL NUMBER TAG		01
39	0503010001	RIVET 3,2 X 5,5		04
40	0503031087	AUTO CONTROL APPROVED DECAL		01
41	0503031428	READ MANUAL DECAL		01
42	0503031827	LUBRICATE AND RETIGHTEN DAILY DECAL		01
43	0503031803	IMPORTANT DECAL		01
44	0503033795	ADHESIVE LABEL		02
45	0503033794	ADHESIVE		02



Item	Code	Description	See page	QT
01	0511061907	FRAME		01
02	0521045631	HYDRAULIC CYLINDER	7	01
02.	0521045632	HYDRAULIC CYLINDER	8	01
03	0521012538	1.2" X 3.5" COUPLING SHAFT		04
04	0503010523	1/4" X 2" SPLIT PIN		08
05	0501051008	LEFT CARRYING-WHEELS	4	01
06	0501051007	RIGHT CARRYING-WHEELS	3	01
07	0511040026	DRAWBAR ASSY	9	01
07A	0511062392	DRAWBAR		01
07B	0501069684	TRACTOR HITCH		01
07C	0501017291	1-1/2" X 8.1" BOLT		01
07D	0501011301	1.1/2" UNC 6FPP 2.5/16" NUT		01
07E	0503010010	SPLIT PIN 1/4" X 2.1/2"		01
08	0521812538	COUPLING SHAFT		01
09	0503010523	1/4" X 2" SPLIT PIN		01
10	0503062010	750 X 16-12L ASSY WHEEL AND TIRE	12	02
11	0501055244	CAGE ROLLER ASSEMBLY	10	02
11.	0501055243	CAGE ROLLER ASSEMBLY	11	01
12	0511065378	BREAK ROLLER ARM		06
13	0501068437	BREAK ROLLER SUPPORT FIXATION		06
14	0501053706	SUPPORT WITH BLADE DISC		13
15	0511011887	COUPLING SHAFT		02
16	0503010571	1/4" X 1.1/2" SPLIT PIN		08
17	0521012536	COUPLING SHAFT		02
18		HYDRAULIC CIRCUIT	16	
19	0502012702	BODY SUPPORT CLAMP		03
20	0503012555	SCREW 7/16 UNC X 2 CS RT G.7 ZN		03
21	0503010180	7/16" SPRING WASHER		03
22	0501052930	ESTABILIZER DRAWBAR ASSY	14	01
23	0521014574	3/4" FASTENE		38

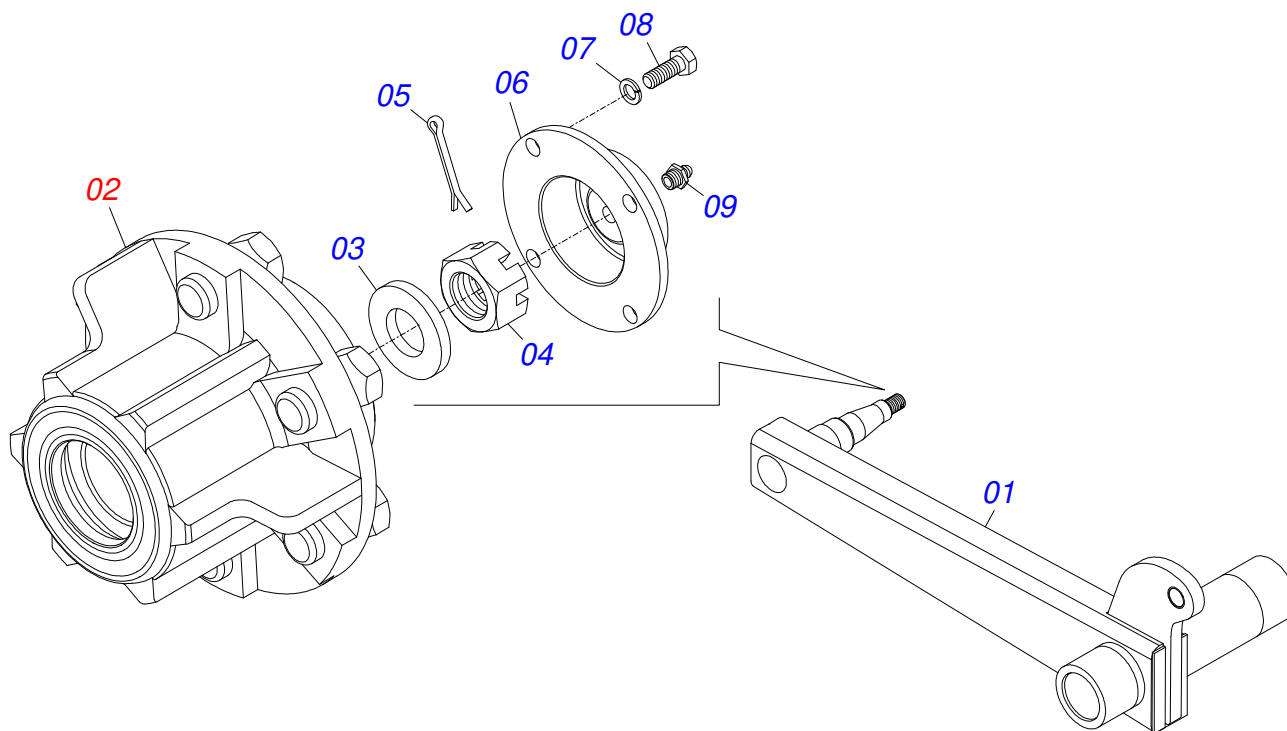


Item	Code	Description	See page	QT
24	0501010827	3/4" X 2-3/4" BOLT		06
25	0503010023	3/4" SPRING WASHER		94
26	0503010014	3/4" ZN G.5 (HEAVY) UNC HEX NUT		94
27	0503010002	1800 GREASE FITTING		04
28	0511043789	SHANKS SYSTEM ASSY		13
29	0501047895	25 ROD STOP		01
30	0501047885	30 ROD STOP		01
31	0501047886	35 ROD STOP		01
32	0501047887	40 ROD STOP		01
33	0503010901	3/4UNC 3.1/2 BOLT		08
34	0501010322	20,50 X 46 X 4,00 ZN FLAT WASHER		08
35	0503011442	3/4" SPRING WASHER		40
36	0503010014	3/4" ZN G.5 (HEAVY) UNC HEX NUT		40
37	0501110563	LEFT PIVOT BEARING WITH SLEEVE	5	02
37.	0501110568	RIGHT PIVOT BEARING WITH SLEEVE	6	02
38	0503034003	61 X 118 SERIAL NUMBER TAG		01
39	0503010001	RIVET 3,2 X 5,5		04
40	0503031087	AUTO CONTROL APPROVED DECAL		01
41	0503031428	READ MANUAL DECAL		01
42	0503031827	LUBRICATE AND RETIGHTEN DAILY DECAL		01
43	0503031803	IMPORTANT DECAL		01
44	0503033795	ADHESIVE LABEL		02
45	0503033794	ADHESIVE		02

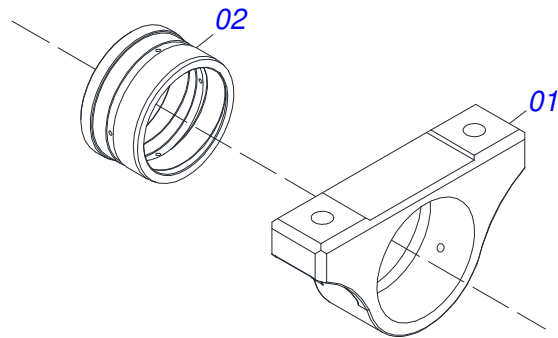


Item	Code	Description	See page	QT
01	0501068416	RIGHT CARRYING-WHEELS		01
02	0501051142	CARRYING WHEEL HUB		01
03	0501016545	FLAT WASHER		01
04	0503030009	1" CASTLE NUT		01
05	0503010018	5/32" X 1-1/2" SPLIT PIN		01
06	0502020591	PROTECCION COVER		01
07	0503011444	SPRING WASHER 5/16"		04
08	0503010358	5/16" X 5/8" BOLT		04
09	0503010002	1800 GREASE FITTING		01

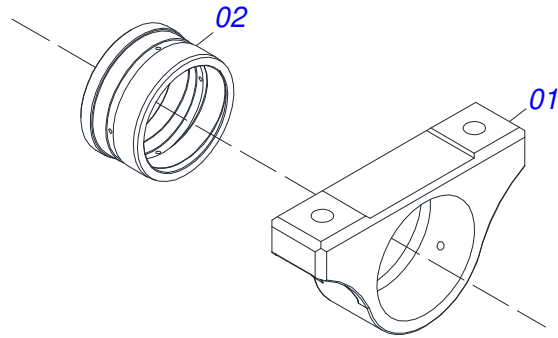




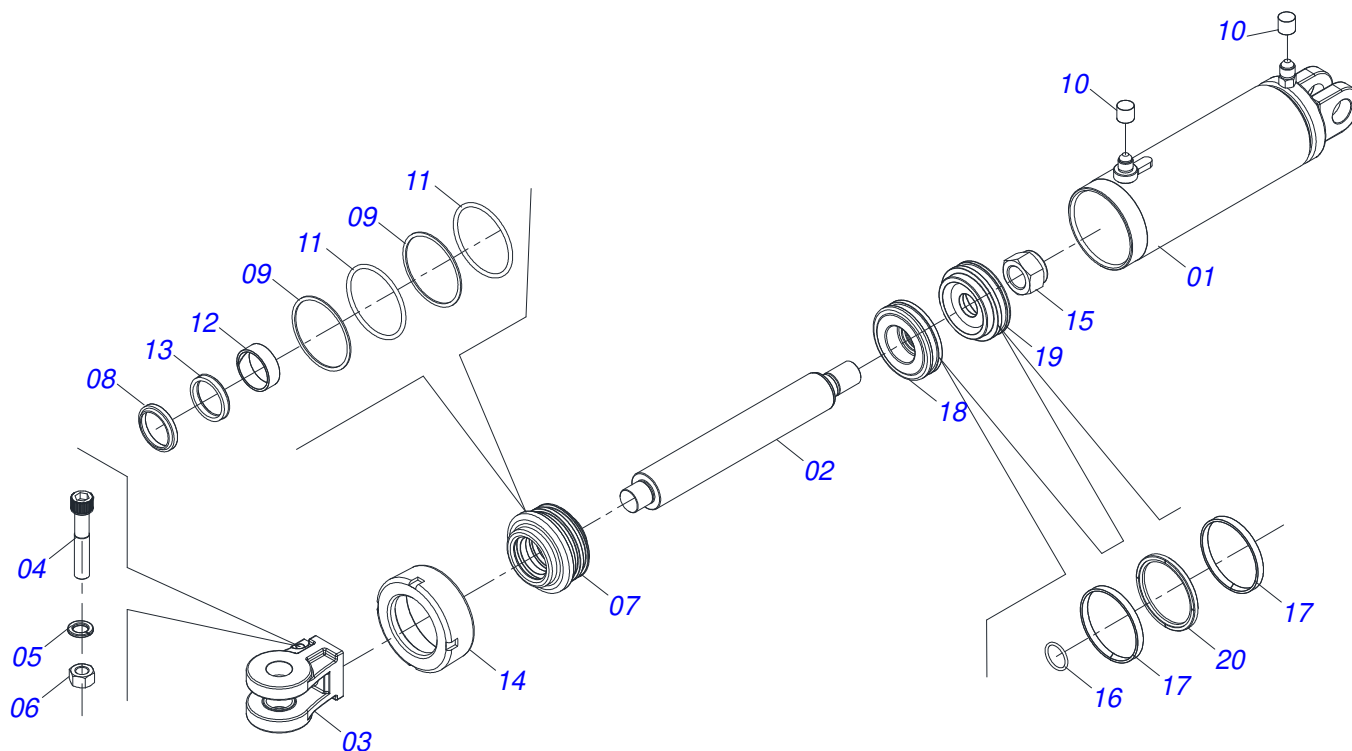
Item	Code	Description	See page	QT
01	0501068417	LEFT CARRYING-WHEELS		01
02	0501051142	CARRYING WHEEL HUB		01
03	0501016545	FLAT WASHER		01
04	0503030009	1" CASTLE NUT		01
05	0503010018	5/32" X 1-1/2" SPLIT PIN		01
06	0502020591	PROTECCION COVER		01
07	0503011444	SPRING WASHER 5/16"		04
08	0503010358	5/16" X 5/8" BOLT		04
09	0503010002	1800 GREASE FITTING		01



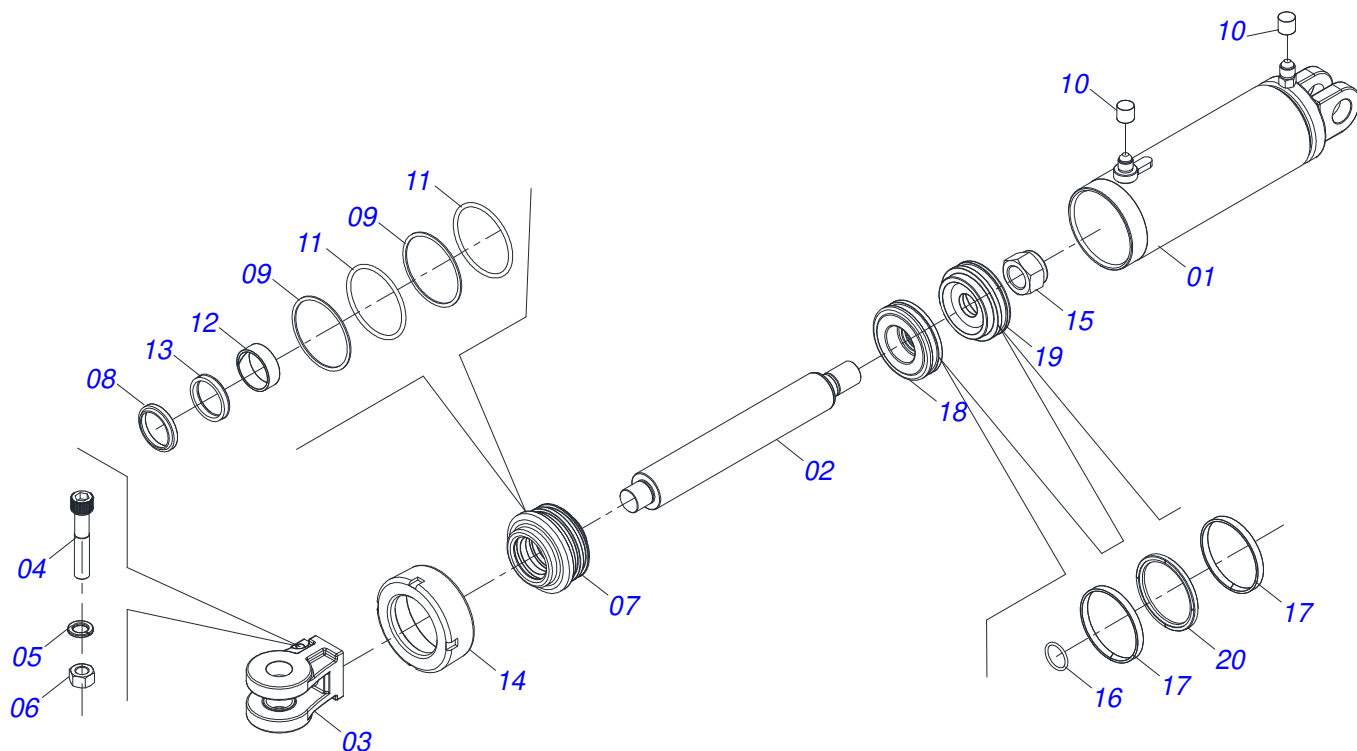
Item	Code	Description	See page	QT
01	0502012273	PIVOT BEARING		01
02	0551018339	SLEEVE NYLON 114,40 X 140 X 76		01



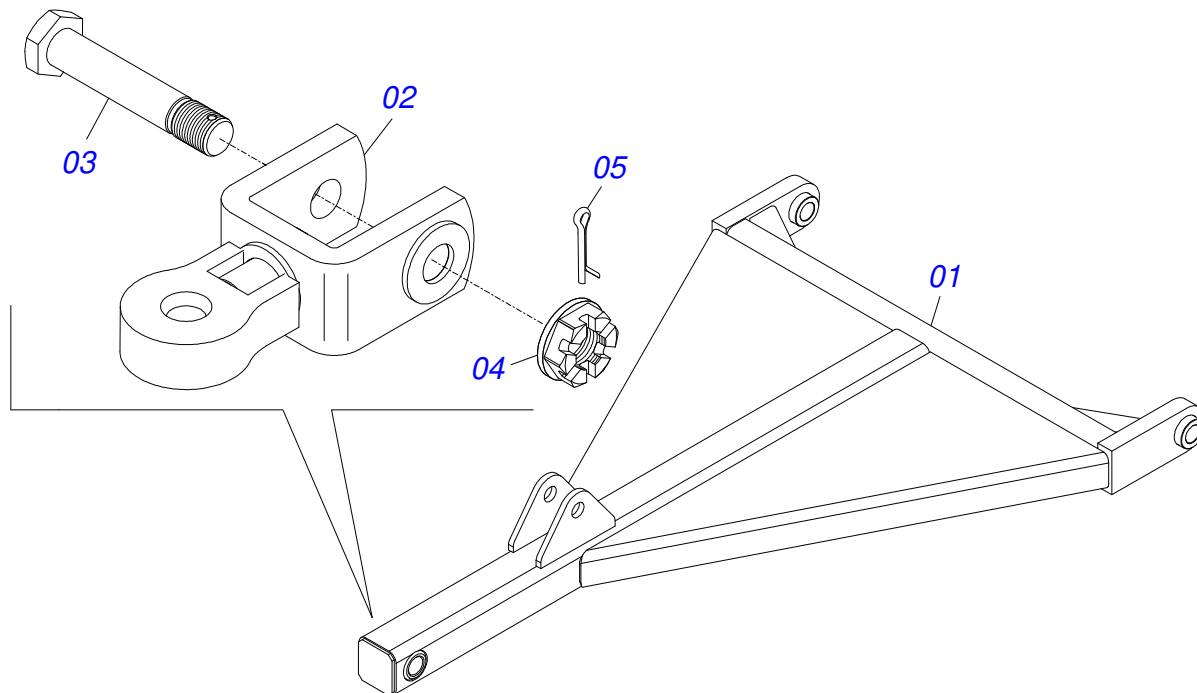
Item	Code	Description	See page	QT
01	0502012509	RIGHT PIVOT BEARING		01
02	0551018339	SLEEVE NYLON 114,40 X 140 X 76		01



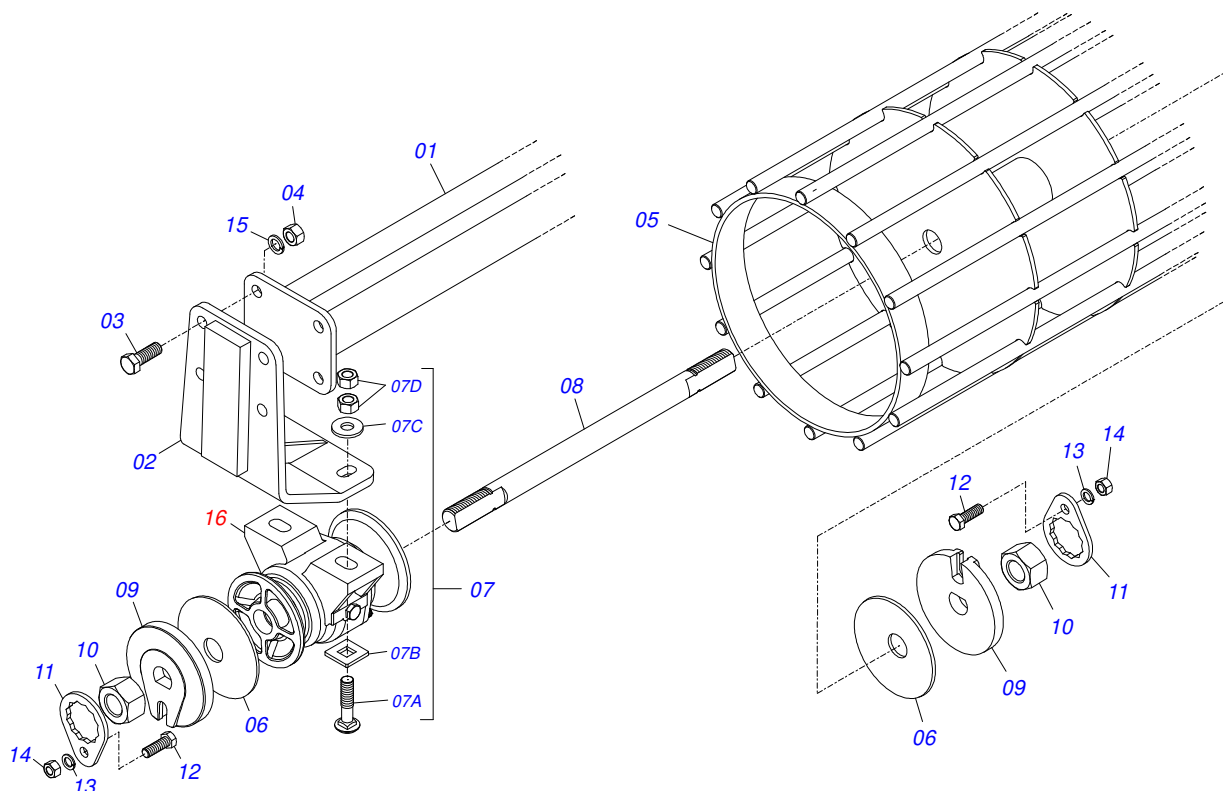
Item	Code	Description	See page	QT
01	0521066160	CYLINDER CASE 114,30 X 323		01
02	0571019558	HYDRAULIC CYLINDER TURNBUCKLE		01
03	0502040747	32.54 CLEVIS CLAMP		01
04	0503011094	BOLT 3/8" UNC X 2" C C S I 12.9		01
05	0503011443	SPRING WASHER 3/8"		01
06	0503010026	3/8" NUT		01
07	0502011220	2" X 4.5" RING SUPPORT		01
08	0503015636	SCRAPER SEAL		01
09	0503011893	BACK-UP RING, 8-346		01
10	0503030385	CYLINDER PLUG N-002		02
11	0503011892	O' RING, 2-346 N 3006-9B		01
12	0503015635	U-CUP SEAL		01
13	0503015634	RING SLYDRING		01
14	0502011222	END CAP 4 . 1/2"		01
15	0503010817	SELF LOCKING NUT 1.1/4 UNF ALTA G.5 ZN		01
16	0503010345	2-218 N 3006-9B O'RING		01
17	0503017881	RING GUIDE GPU000139		02
18	0581012603	PISTON 114.30 BP		01
19	0581012604	PISTON 114.30 BP		01
20	0503018652	SEAL AX5002+2241 (114,30X98,02X7,90)		01



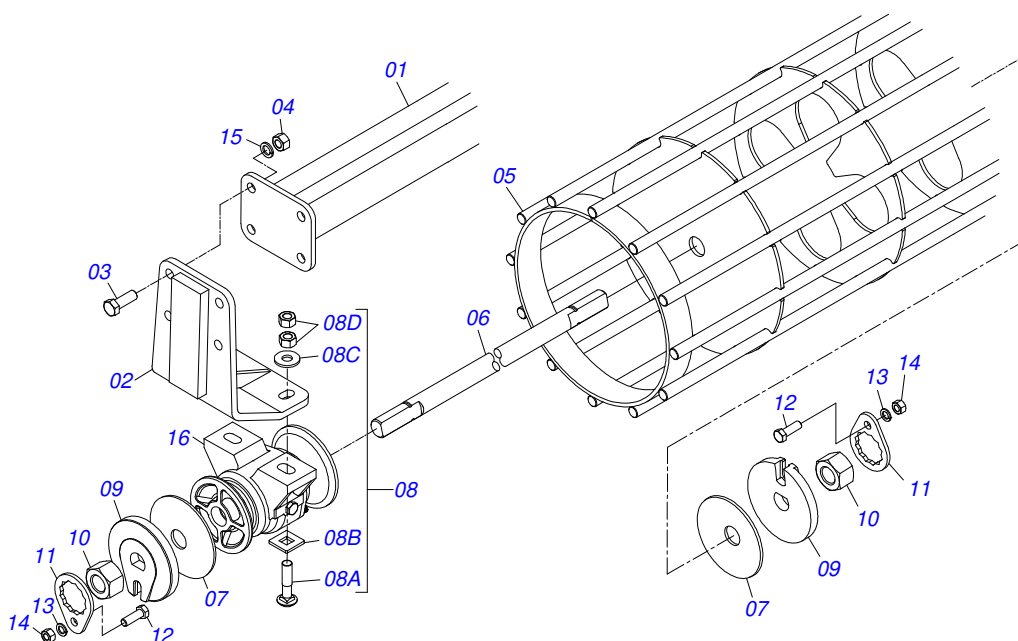
Item	Code	Description	See page	QT
01	0521066159	CYLINDER CASE		01
02	0571019558	HYDRAULIC CYLINDER TURNBUCKLE		01
03	0502040747	32.54 CLEVIS CLAMP		01
04	0503011094	BOLT 3/8" UNC X 2" C C S I 12.9		01
05	0503011443	SPRING WASHER 3/8"		01
06	0503010026	3/8" NUT		01
07	0581010678	50,80 X 101 RING SUPPORT		01
08	0503015636	SCRAPER SEAL		01
09	0503011061	8-342 BACK-UP RING		02
10	0503030385	CYLINDER PLUG N-002		02
11	0503010338	2-342 N 3006-9B O'RING		02
12	0503018025	RING GUIDE W2-2250-750		01
13	0503018026	GASKET 1870-2000-375 B POLYMAX		01
14	0502012822	END CAP 4"		01
15	0503010817	SELF LOCKING NUT 1.1/4 UNF ALTA G.5 ZN		01
16	0503010345	2-218 N 3006-9B O'RING		01
17	0503017889	RING GUIDE		02
18	0581012600	PISTON		01
19	0581012599	PISTON		01
20	0503018651	SEALING		01



Item	Code	Description	See page	QT
01	0511062392	DRAWBAR		01
02	0501069684	TRACTOR HITCH		01
03	0501017291	1-1/2" X 8.1" BOLT		01
04	0501011301	1.1/2" UNC 6FPP 2.5/16" NUT		01
05	0503010010	SPLIT PIN 1/4" X 2.1/2"		01

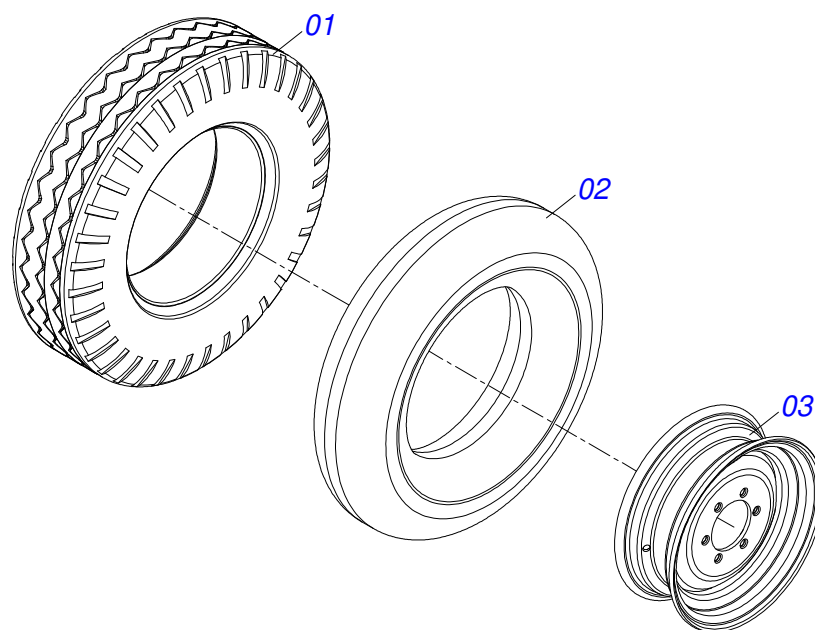


Item	Code	Description	See page	QT
01	0511065380	1329 BREAK ROLLER SUPPORT		01
02	0511069433	BREAK ROLLER BRACKET		01
03	0503010232	5/8" X 1.3/4" BOLT		04
04	0503010013	5/8" UNC G.5 ZN HEX NUT		04
05	0511065383	BREAK ROLLER 1310		01
06	0531018575	WASHER CONCAVE		02
07	0501058802	5/8 UNC X 2.3/4 BOLT ASSY		04
07A	0503015154	5/8" X 2.3/4" BOLT		01
07B	0501010947	5/8 NUT LOCK		01
07C	0503010013	5/8" UNC G.5 ZN HEX NUT		02
07D	0501012140	FLAT WASHER 16,50 X 40 X 4,00 ZN		01
08	0541011902	1.1/4 X 1355 AXLE		01
09	0502010835	1-1/4" EXTERNAL AXLE WASHER		02
10	0501010087	1.1/4" NUT		02
11	0501010455	1.1/4" NUT LOCK		02
12	0501010161	BOLT 1/2" UNC X 1.1/4" C S G.2 ZN		02
13	0503011440	SPRING WASHER		02
14	0503010060	1/2 UNC G.5 ZN HEX NUT		02
15	0503011445	SPRING WASHER		04
16	0501046922	AGRICULTURAL BEARING DM OL 7 X 1.1/4 IMPLEMENT		02

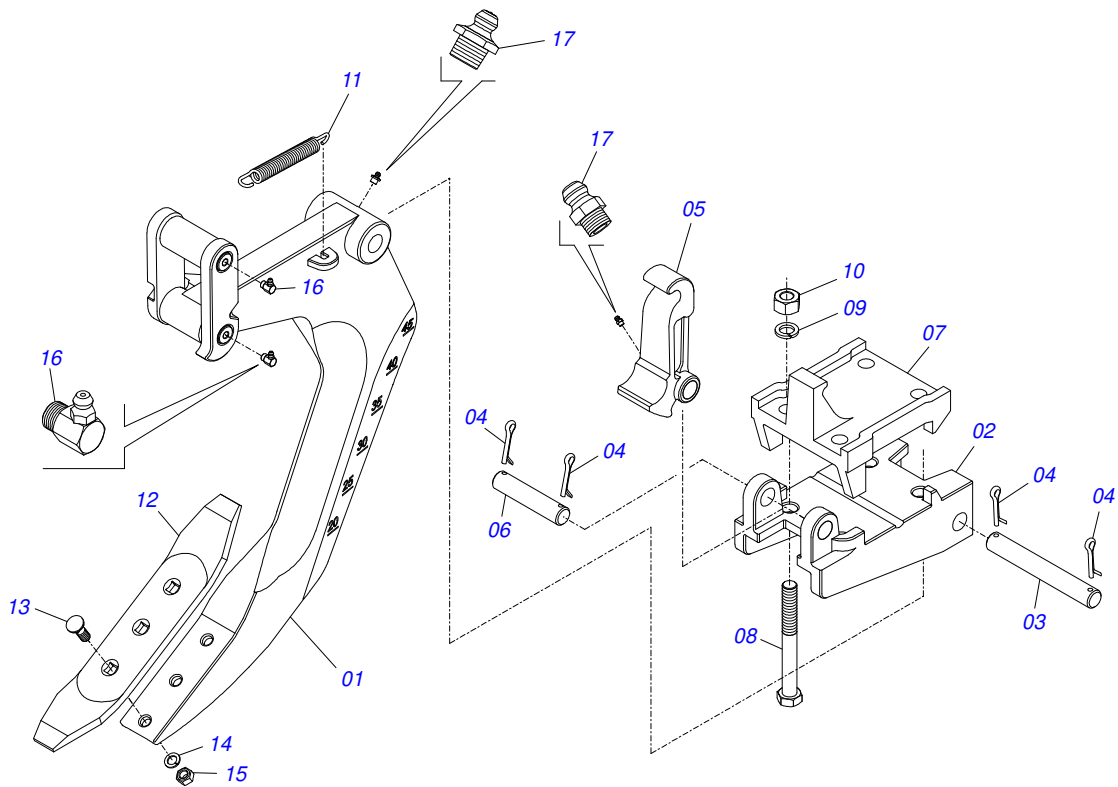


Item	Code	Description	See page	QT
01	0511065379	2129 BREAK ROLLER SUPPORT		01
02	0511069433	BREAK ROLLER BRACKET		01
03	0503010232	5/8" X 1.3/4" BOLT		04
04	0503010013	5/8" UNC G.5 ZN HEX NUT		04
05	0511065382	2108 BREAK ROLLER		01
06	0501013310	1-1/4 X 2150 AXLE		01
07	0531018575	WASHER CONCAVE		02
08	0501058802	5/8 UNC X 2.3/4 BOLT ASSY		04
08A	0503015154	5/8" X 2.3/4" BOLT		01
08B	0501010947	5/8 NUT LOCK		01
08C	0503010013	5/8" UNC G.5 ZN HEX NUT		02
08D	0501012140	FLAT WASHER 16,50 X 40 X 4,00 ZN		01
09	0502010835	1-1/4" EXTERNAL AXLE WASHER		02
10	0501010087	1.1/4" NUT		02
11	0501010455	1.1/4" NUT LOCK		02
12	0501010161	BOLT 1/2" UNC X 1.1/4" C S G.2 ZN		02
13	0503011440	SPRING WASHER		02
14	0503010060	1/2 UNC G.5 ZN HEX NUT		02
15	0503011445	SPRING WASHER		04
16	0501046922	AGRICULTURAL BEARING DM OL 7 X 1.1/4 IMPLEMENT		02

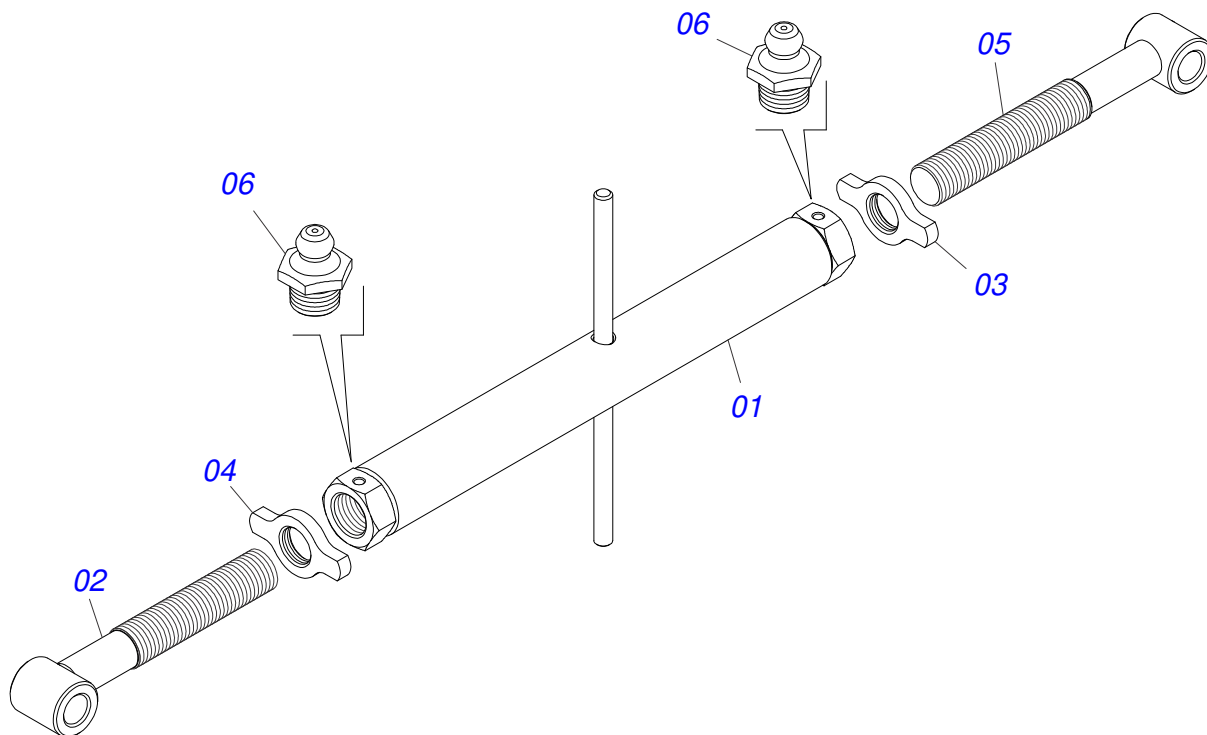




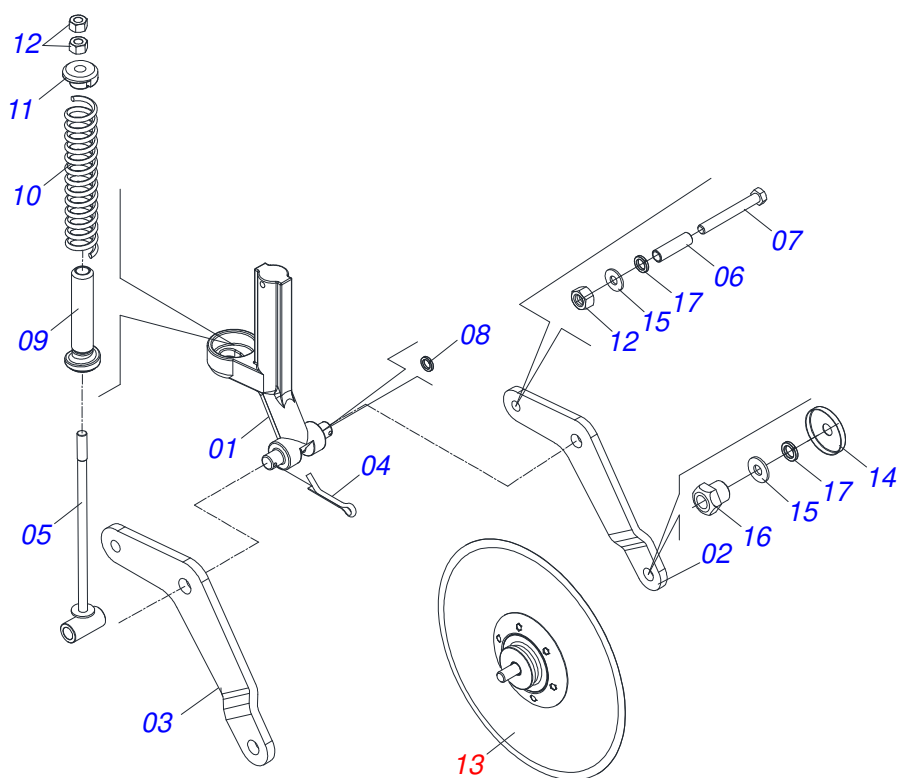
Item	Code	Description	See page	QT
01	0503012864	TYRE		01
02	0503010033	7.50 X 16 INNER TIRE		01
03	0521062708	WHEEL 5,50 X 16 X 118 X 6F 16,50 X 152,40		01



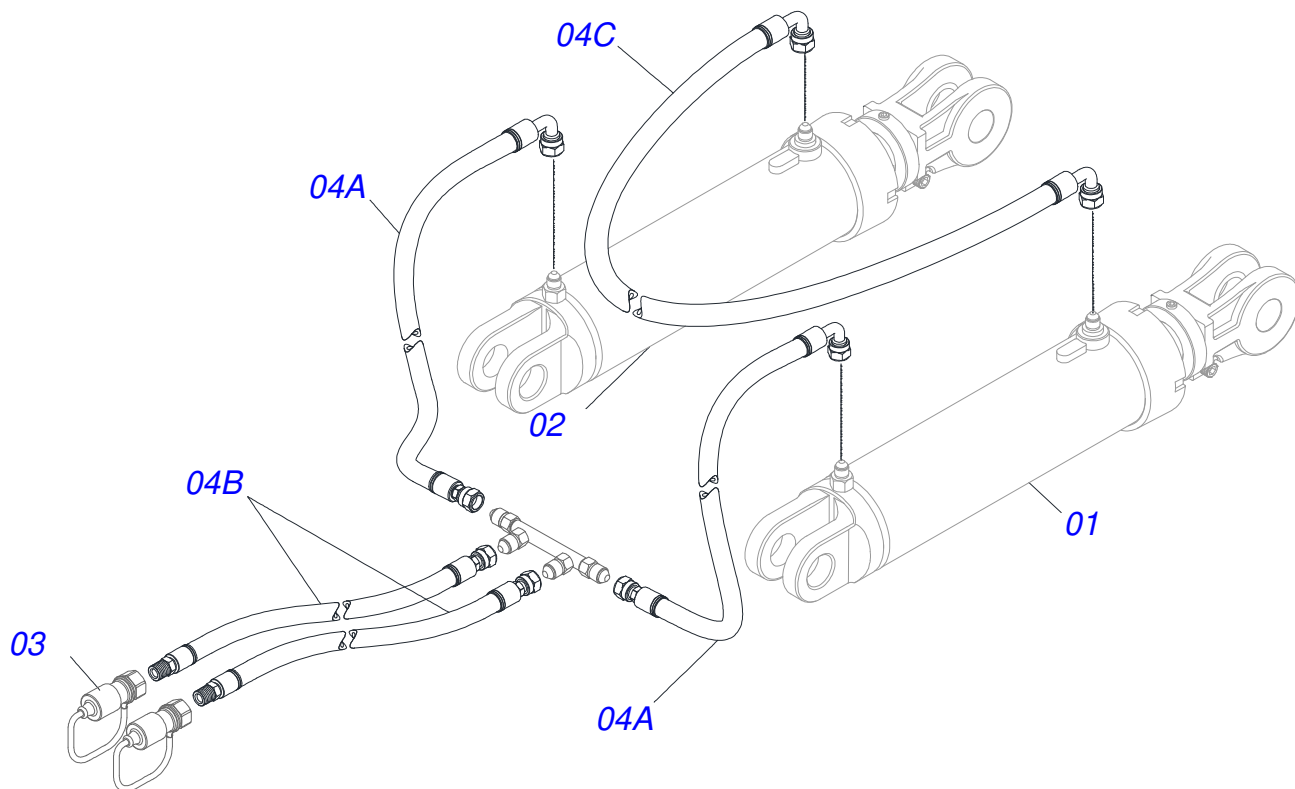
Item	Code	Description	See page	QT
01	0511061712	ARM SUBSOILER		01
02	0502012692	FIXING BASE		01
03	0521017725	1" X 7.4" COUPLING SHAFT		02
04	0503010571	1/4" X 1.1/2" SPLIT PIN		04
05	0502011864	RETRIEVING		01
06	0521017724	1" X 6.2" COUPLING SHAFT		01
07	0502012691	FIXER BASE UPPER		01
08	0503012729	3/4" X 6-3/4" BOLT		04
09	0503011442	3/4" SPRING WASHER		04
10	0503010014	3/4" ZN G.5 (HEAVY) UNC HEX NUT		08
11	0503031574	6.9" X 0.8" X 0.1" TRACTION SPRING		01
12	0624010005	POINT SUBSOILER 16"X3"X1/2" E019		01
13	0503012956	1/2" X 1-1/2" BOLT		03
14	0503011440	SPRING WASHER		03
15	0503010020	1/2"NUT		03
16	0503010004	1890 GREASE FITTING		01
17	0503010002	1800 GREASE FITTING		02



Item	Code	Description	See page	QT
01	0501068095	850 ADJUSTMENT NUT		01
02	0511062394	RIGHT TURNBUCKLE		01
03	0541018673	COUNTERNUT		01
04	0541018672	COUNTERNUT		01
05	0511062395	LEFT TURNBUCKLE		01
06	0503010002	1800 GREASE FITTING		02

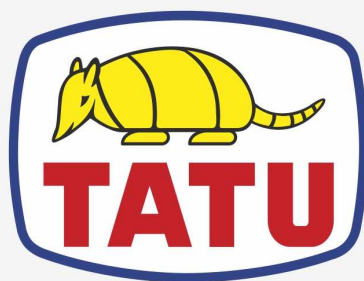


Item	Code	Description	See page	QT
01	0502012025	BLADE DISC SUPPORT		01
02	0541019877	RIGHT ARM OF THE BLADE DISC		01
03	0541019878	LEFT ARM OF THE BLADE DISC		01
04	0503010571	1/4" X 1.1/2" SPLIT PIN		02
05	0511060915	SPRING ROD		01
06	0521010452	SLEEVE		01
07	0503011198	BOLT 3/4" UNC X 6" CS G.5		01
08	0503011442	3/4" SPRING WASHER		01
09	0511061576	220 SPRING GUIDE		01
10	0503031679	COMPRESSION SPRING		01
11	1902020393	SPRING UPPER SUPPORT		01
12	0503010014	3/4" ZN G.5 (HEAVY) UNC HEX NUT		03
13	0501056436	DISC BLADE HUB ASSY		01
14	0521015376	DUST CLOAK		02
15	0511015346	FLAT WASHER		02
16	0521013510	3/4" NUT		02
17	0503011438	SPRING WASHER		02



Item	Code	Description	See page	QT
01	0521045631	HYDRAULIC CYLINDER	7	01
02	0521045632	HYDRAULIC CYLINDER	8	01
03	0501053834	MALE QUICK COUPLER		02
04	0501052886	HOSE KIT		01
04A	0501080431	TR-TC HOSE ASSY		02
04B	0501080384	3/8" X 118" TR-TM HOSE		02
04C	0501080578	3/8" X 157" TC-TC HOSE		01
04D	0503033158	PLASTIC BAG		01





**MARCHESAN**

**Technical Publications | Elaboration and Revision**  
LUIZ CANDIDO

[www.marchesan.com.br](http://www.marchesan.com.br)

