

PARTS CATALOGUE



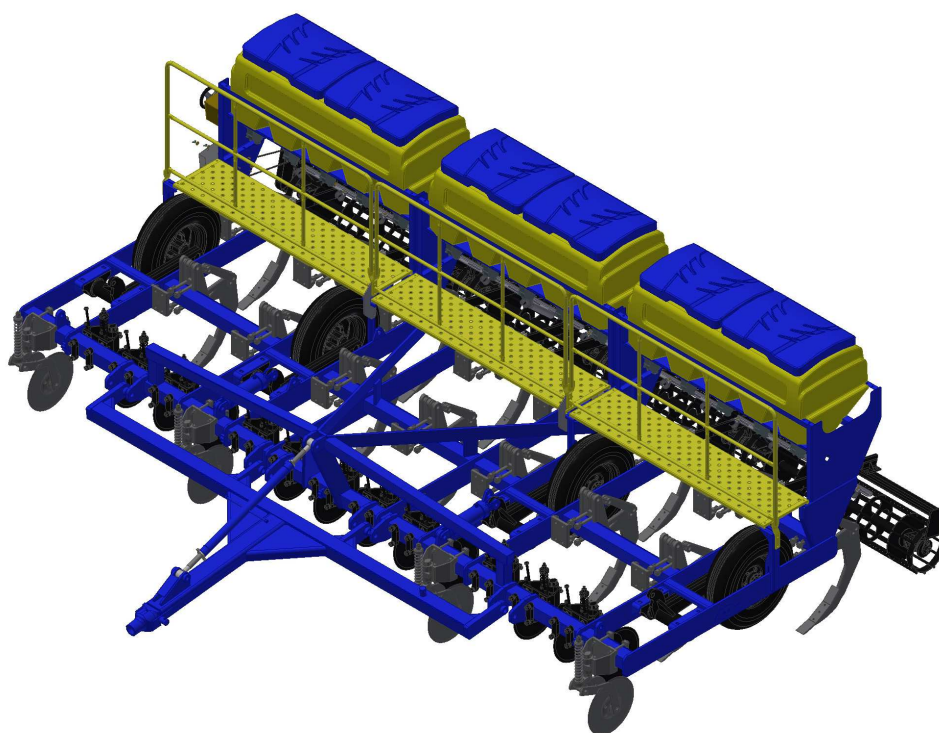
SUBSOILER PLOW

Code:

0501092719

Product:

AST/MATIC 450 15H DC CXF



Series:

0111

Revision:

00

Date Revision:

MAIO/2020



PRODUCTS

| Code | Description |
|------------|---------------------------------|
| 0101170132 | AST/MATIC 450 15H DC CXF S-0111 |

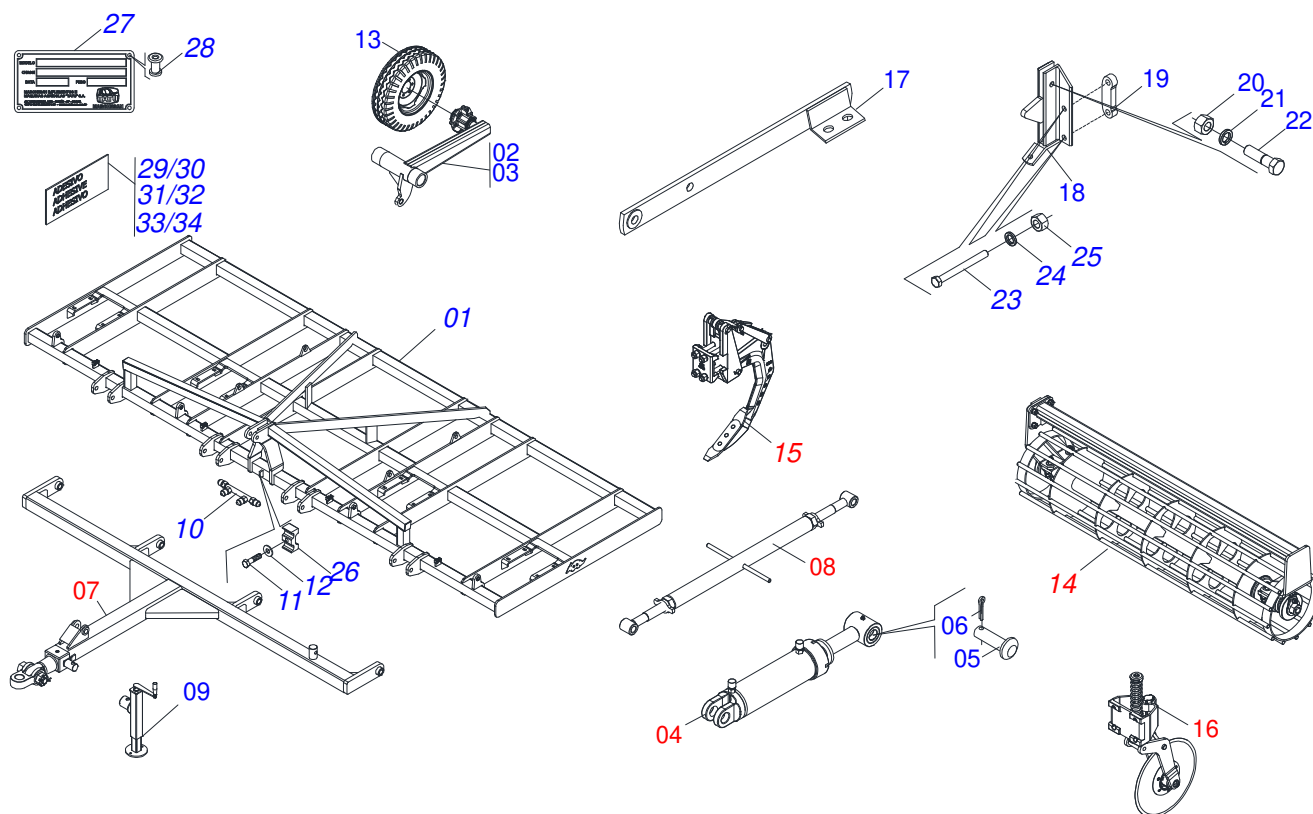
ATTENTION: IMPORTANT

Marchesan S.A. reserves the right to improve and / or modify the technical features of its products, without obligation to do the same with those products already sold and without prior knowledge of the dealer or the consumer.



INDEX

| | | | |
|------------|------------------------------------|-------|----|
| 0909098954 | FRAME | | 1 |
| 0909098958 | PARTS | | 2 |
| 0511047074 | DRAWBAR ASSY | | 3 |
| 0501055245 | BREAK ROLLER ASSY | | 4 |
| 0501055244 | BOX BREAK ROLLER | | 5 |
| 0511050566 | | | 6 |
| 0511047076 | SHANKS SYSTEM ASSY | | 7 |
| 0503062010 | 750 X 16-12L ASSY WHEEL AND TIRE | | 8 |
| 0521045631 | HYDRAULIC CYLINDER | | 9 |
| 0521045632 | HYDRAULIC CYLINDER | | 10 |
| 0501110568 | MANCAL ARTICULAÇÃO DIREITA C/LUVA | | 11 |
| 0501110563 | MANCAL ARTICULAÇÃO ESQUERDA C/LUVA | | 12 |
| 0501053706 | SUPPORT WITH BLADE DISC | | 13 |
| 0503060641 | COVER BOX LEFT FERTILIZER | | 14 |
| 0909098953 | | | 15 |



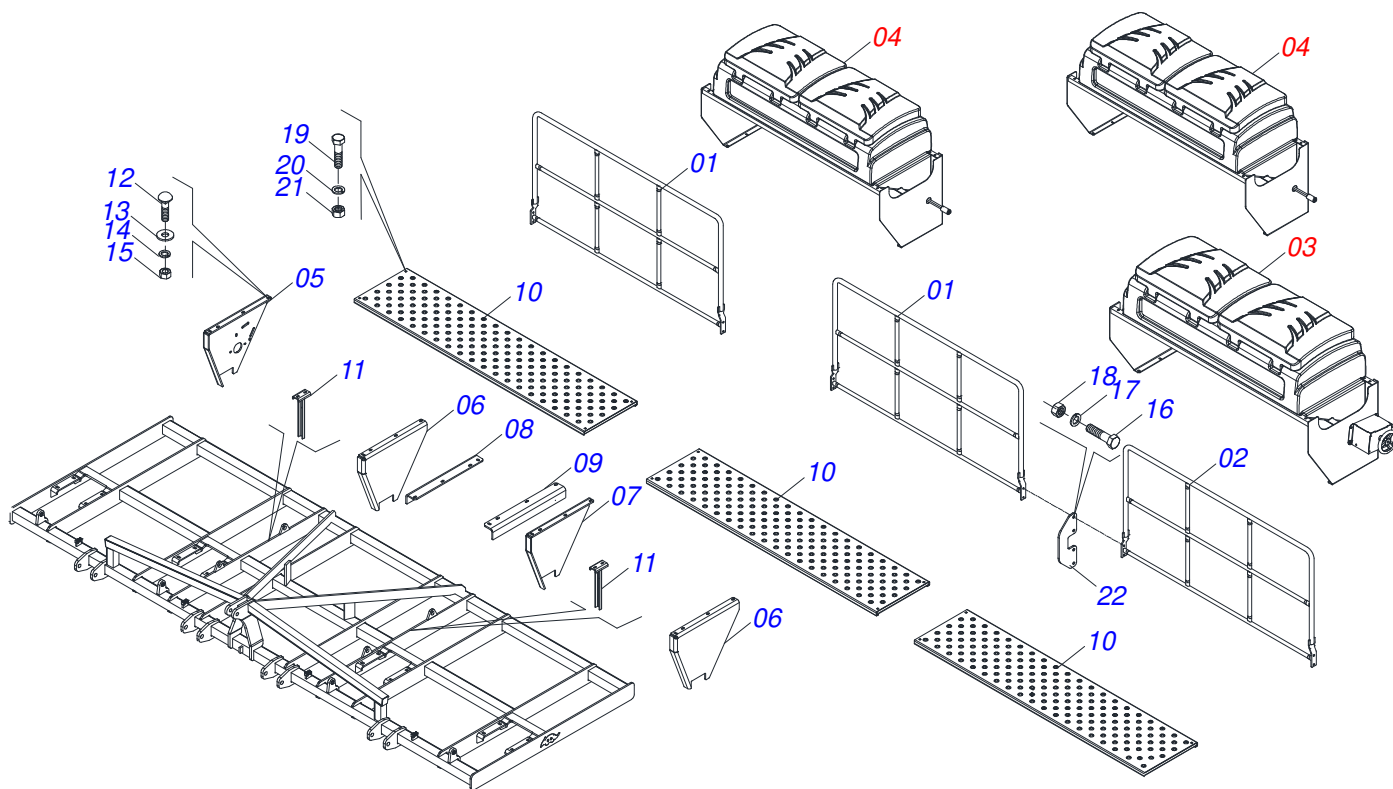
| Item | Code | Description | See page | QT |
|------|------------|----------------------------------|----------|-----|
| 01 | 0521060550 | FRAME | | 01 |
| 02 | 0501051008 | LEFT CARRYING-WHEELS | | 02 |
| 03 | 0501051007 | RIGHT CARRYING-WHEELS | | 02 |
| 04 | 0521045631 | HYDRAULIC CYLINDER | 9 | 02 |
| 04. | 0521045632 | HYDRAULIC CYLINDER | 10 | 02 |
| 05 | 0521012538 | 1.2" X 3.5" COUPLING SHAFT | | 04 |
| 06 | 0503010523 | 1/4" X 2" COTTERPIN | | 08 |
| 07 | 0511047074 | DRAWBAR ASSY | 3 | 01 |
| 08 | 0501054088 | ESTABILIZADOR CABEÇALHO COMPLETO | | 01 |
| 09 | 0511048088 | DRAWBAR JACK | | 01 |
| 10 | 0501068088 | OIL TUBE | | 01 |
| 10. | 0501072676 | OIL DISTRIBUTOR BODY | | 01 |
| 11 | 0503012555 | SCREW 7/16 UNC X 2 CS RT G.7 ZN | | 01 |
| 12 | 0503010180 | 7/16" SPRING WASHER | | 01 |
| 13 | 0503062010 | 750 X 16-12L ASSY WHEEL AND TIRE | 8 | 04 |
| 14 | 0511050566 | BOX BREAK ROLLER | 6 | 01 |
| 14. | 0501055244 | BREAK ROLLER ASSY | 5 | 02 |
| 14.. | 0501055245 | BREAK ROLLER ASSY | 4 | 01 |
| 15 | 0511047076 | SHANKS SYSTEM ASSY | 7 | 15 |
| 16 | 0501053706 | SUPPORT WITH BLADE DISC | 13 | 15 |
| 17 | 0511065378 | BREAK ROLLER ARM | | 04 |
| 18 | 0501068437 | BREAK ROLLER SUPPORT FIXATION | | 08 |
| 19 | 0571011609 | FIXER PLATE CUTTING DISC | | 46 |
| 20 | 0503010014 | 3/4" NUT | | 24 |
| 21 | 0503010023 | 3/4" SPRING WASHER | | 116 |
| 22 | 0501010827 | 3/4" X 2-3/4" BOLT | | 08 |
| 23 | 0501810161 | SCREW 1/2 UNC X 1.1/4 C S G.2 | | 08 |
| 24 | 0503011440 | SPRING WASHER | | 08 |
| 25 | 0503010060 | 1/2" NUT | | 08 |
| 26 | 0502012702 | BODY SUPPORT CLAMP | | 05 |
| 27 | 0503034003 | SERIAL NUMBER TAG 61 X 118 | | 01 |



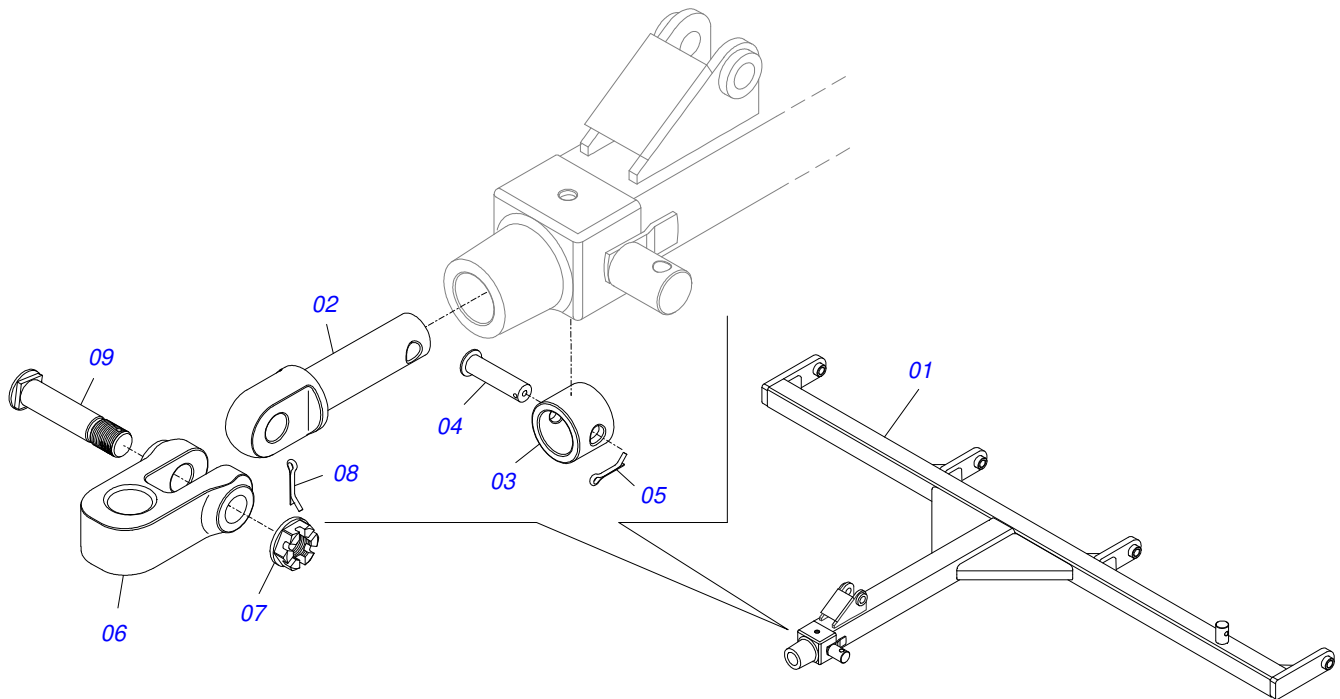
FRAME

0909098954

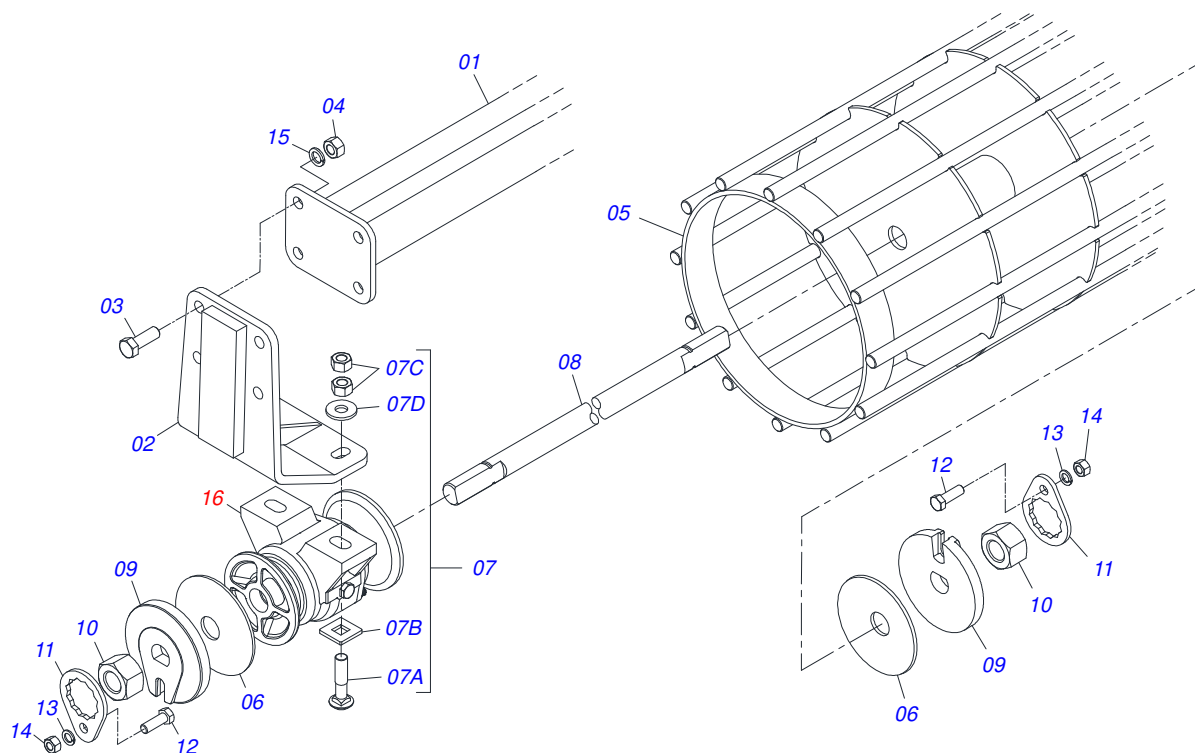
| Item | Code | Description | See page | QT |
|------|------------|-------------------------------------|----------|----|
| 28 | 0503010001 | 3.2 X 5.5 RIVET | | 04 |
| 29 | 0503033794 | ADHESIVE | | 01 |
| 30 | 0503033795 | ADHESIVE LABEL | | 01 |
| 31 | 0503031803 | IMPORTANT ADHESIVE STICKER | | 01 |
| 32 | 0503031827 | LUBRICATE AND RETIGHTEN DAILY DECAL | | 01 |
| 33 | 0503031087 | ADHESIVE LABEL | | 01 |
| 34 | 0503031428 | READ MANUAL DECAL | | 01 |
| 35 | 0501110568 | MANCAL ARTICULAÇÃO DIREITA C/LUVA | 11 | 01 |
| 35. | 0501110563 | MANCAL ARTICULAÇÃO ESQUERDA C/LUVA | 12 | 01 |
| 36 | 0503810901 | SCREW 3/4 UNC X 3.1/2 C S G.5 | | 16 |
| 37 | 0503011442 | 3/4" SPRING WASHER | | 16 |
| 38 | 0503810014 | 3/4" NUT | | 16 |



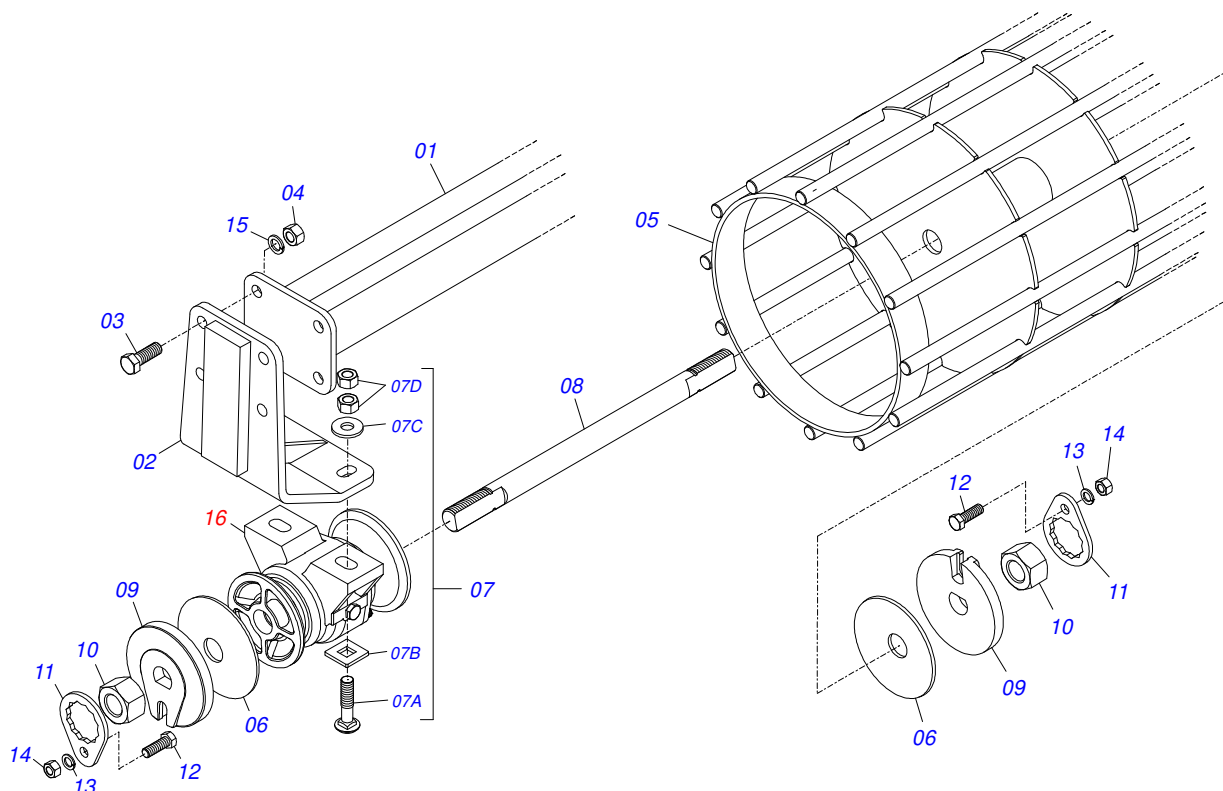
| Item | Code | Description | See page | QT |
|------|------------|--------------------|----------|----|
| 01 | 0521062012 | | 01 | 01 |
| 02 | 0521062013 | | 02 | 02 |
| 03 | 0511050565 | | 01 | 01 |
| 04 | 0511050615 | | 02 | 02 |
| 05 | 0561017767 | | 01 | 01 |
| 06 | 0561017770 | | 02 | 02 |
| 07 | 0561017769 | | 01 | 01 |
| 08 | 0561017792 | | 01 | 01 |
| 09 | 0561017791 | | 01 | 01 |
| 10 | 0521062014 | | 03 | 03 |
| 11 | 0501079201 | | 02 | 02 |
| 12 | 0503010849 | 3/8" X 1-1/2" BOLT | 18 | 18 |
| 13 | 0501010984 | FLAT WASHER | 36 | 36 |
| 14 | 0503010025 | 3/8" SPRING WASHER | 18 | 18 |
| 15 | 0503010026 | 3/8" NUT | 18 | 18 |
| 16 | 0501018526 | 3/8" X 2" BOLT | 12 | 12 |
| 17 | 0503010025 | 3/8" SPRING WASHER | 12 | 12 |
| 18 | 0503010026 | 3/8" NUT | 12 | 12 |
| 19 | 0501010161 | 1/2" X 1.1/4" BOLT | 8 | 8 |
| 20 | 0503010019 | 1/2" SPRING WASHER | 12 | 12 |
| 21 | 0503010060 | 1/2" NUT | 12 | 12 |
| 22 | 0561017778 | | 02 | 02 |



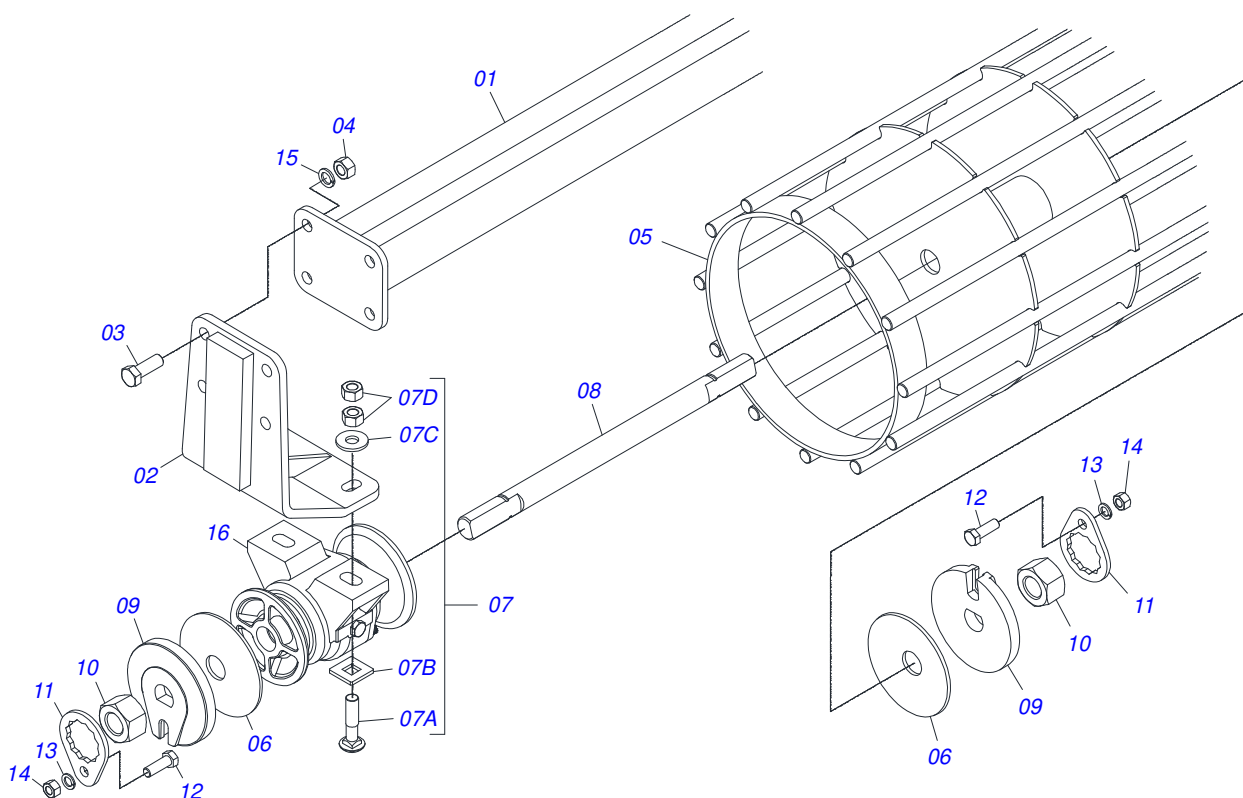
| Item | Code | Description | See page | QT |
|------|------------|---------------------------|----------|----|
| 01 | 0511069431 | DRAWBAR | | 01 |
| 02 | 0502040727 | COUPLING SHAFT | | 01 |
| 03 | 0502040327 | ANEL TRAVA ENGATE | | 01 |
| 04 | 0511014902 | COUPLING SHAFT | | 01 |
| 05 | 0503010571 | 1/4" X 1.1/2 COTTERPIN | | 01 |
| 06 | 1902040733 | U COUPLING HOOK | | 01 |
| 07 | 0501011301 | 1.1/2 UNC 6FPP 2.5/16 NUT | | 01 |
| 08 | 0503010010 | 1/4" X 2.1/2" COTTERPIN | | 01 |
| 09 | 0521012545 | COUPLING SHAFT | | 01 |



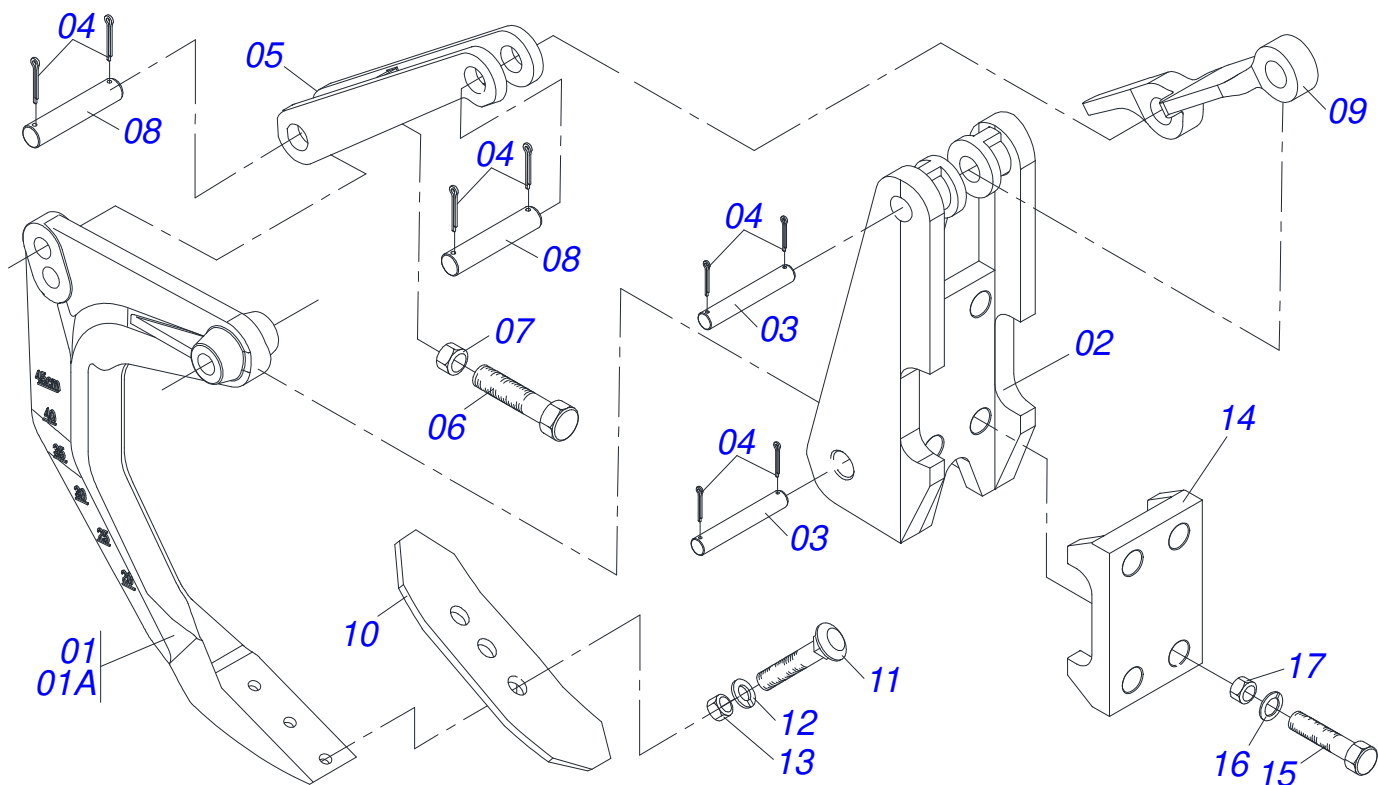
| Item | Code | Description | See page | QT |
|------|------------|----------------------------------|----------|----|
| 01 | 0511065381 | 1729 BREAK ROLLER SUPPORT | | 01 |
| 02 | 0511069433 | BREAK ROLLER BRACKET | | 01 |
| 03 | 0503010232 | 5/8" X 1.3/4" BOLT | | 04 |
| 04 | 0503010013 | 5/8" NUT | | 04 |
| 05 | 0511065384 | 1710 BREAK ROLLER | | 01 |
| 06 | 0531018575 | ARRUELA CONCAVA 33,50X 140X 4,75 | | 02 |
| 07 | 0501058802 | 5/8 UNC X 2.3/4 BOLT ASSY | | 04 |
| 07A | 0503015154 | 5/8" X 2.3/4" BOLT | | 01 |
| 07B | 0501010947 | 5/8 NUT LOCK | | 01 |
| 07C | 0503010013 | 5/8" NUT | | 02 |
| 07D | 0501012140 | FLAT WASHER | | 01 |
| 08 | 0541011903 | 1.1/4" X 1755 AXLE | | 01 |
| 09 | 0502010835 | 1-1/4" EXTERNAL AXLE WASHER | | 02 |
| 10 | 0501010087 | 1.1/4" NUT | | 02 |
| 11 | 0501010455 | 1.1/4" NUT LOCK | | 02 |
| 12 | 0501010161 | 1/2" X 1.1/4" BOLT | | 02 |
| 13 | 0503011440 | SPRING WASHER | | 02 |
| 14 | 0503010060 | 1/2" NUT | | 02 |
| 15 | 0503011445 | SPRING WASHER | | 04 |
| 16 | 0501046922 | 7.5" X 1-1/4" OIL BATH BEARING | | 02 |



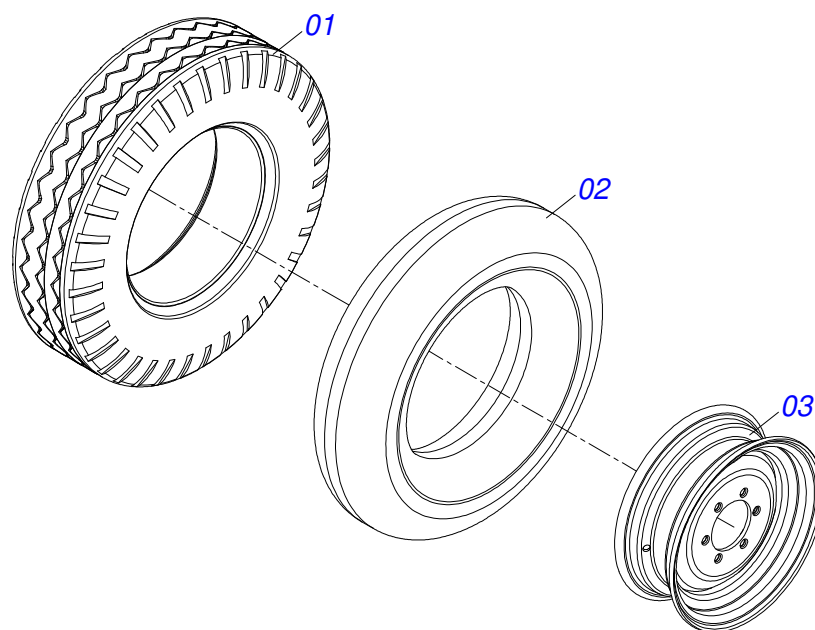
| Item | Code | Description | See page | QT |
|------|------------|----------------------------------|----------|----|
| 01 | 0511065380 | 1329 BREAK ROLLER SUPPORT | | 01 |
| 02 | 0511069433 | BREAK ROLLER BRACKET | | 01 |
| 03 | 0503010232 | 5/8" X 1.3/4" BOLT | | 04 |
| 04 | 0503010013 | 5/8" NUT | | 04 |
| 05 | 0511065383 | BREAK ROLLER 1310 | | 01 |
| 06 | 0531018575 | ARRUELA CONCAVA 33,50X 140X 4,75 | | 02 |
| 07 | 0501058802 | 5/8 UNC X 2.3/4 BOLT ASSY | | 04 |
| 07A | 0503015154 | 5/8" X 2.3/4" BOLT | | 01 |
| 07B | 0501010947 | 5/8 NUT LOCK | | 01 |
| 07C | 0503010013 | 5/8" NUT | | 02 |
| 07D | 0501012140 | FLAT WASHER | | 01 |
| 08 | 0541011902 | 1.1/4 X 1355 AXLE | | 01 |
| 09 | 0502010835 | 1-1/4" EXTERNAL AXLE WASHER | | 02 |
| 10 | 0501010087 | 1.1/4" NUT | | 02 |
| 11 | 0501010455 | 1.1/4" NUT LOCK | | 02 |
| 12 | 0501010161 | 1/2" X 1.1/4" BOLT | | 02 |
| 13 | 0503011440 | SPRING WASHER | | 02 |
| 14 | 0503010060 | 1/2" NUT | | 02 |
| 15 | 0503011445 | SPRING WASHER | | 04 |
| 16 | 0501046922 | 7.5" X 1-1/4" OIL BATH BEARING | | 02 |



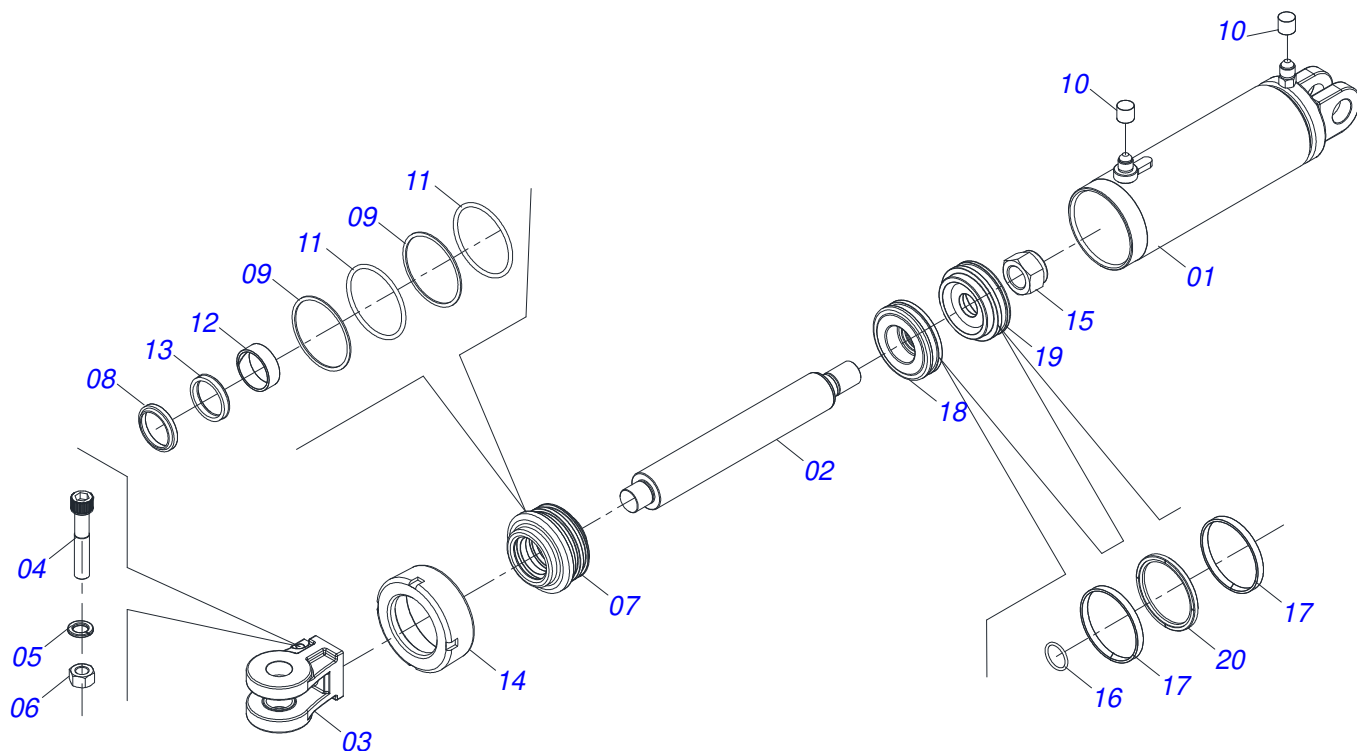
| Item | Code | Description | See page | QT |
|------|------------|--------------------------------------|----------|----|
| 001 | 0511065381 | 1729 BREAK ROLLER SUPPORT | | 01 |
| 002 | 0511069433 | BREAK ROLLER BRACKET | | 01 |
| 003 | 0503010232 | 5/8" X 1.3/4" BOLT | | 04 |
| 004 | 0503010013 | 5/8" NUT | | 04 |
| 005 | 0511065384 | 1710 BREAK ROLLER | | 01 |
| 006 | 0531018575 | ARRUELA CONCAVA 33,50X 140X 4,75 | | 02 |
| 007 | 0501048788 | CONJUNTO PCS IMPL 5/8 UNC X 2.1/2 CA | | 04 |
| 007A | 0501014177 | 5/8" X 2-1/2" BOLT | | 01 |
| 007B | 0501010947 | 5/8 NUT LOCK | | 01 |
| 007C | 0503010013 | 5/8" NUT | | 02 |
| 007D | 0501012140 | FLAT WASHER | | 01 |
| 008 | 0561017748 | | | 01 |
| 009 | 0502010835 | 1-1/4" EXTERNAL AXLE WASHER | | 02 |
| 010 | 0501010087 | 1.1/4" NUT | | 02 |
| 011 | 0501010455 | 1.1/4" NUT LOCK | | 02 |
| 012 | 0501010161 | 1/2" X 1.1/4" BOLT | | 02 |
| 013 | 0503011440 | SPRING WASHER | | 02 |
| 014 | 0503010060 | 1/2" NUT | | 02 |
| 015 | 0503011445 | SPRING WASHER | | 04 |
| 017 | 0501046922 | 7.5" X 1-1/4" OIL BATH BEARING | | 01 |



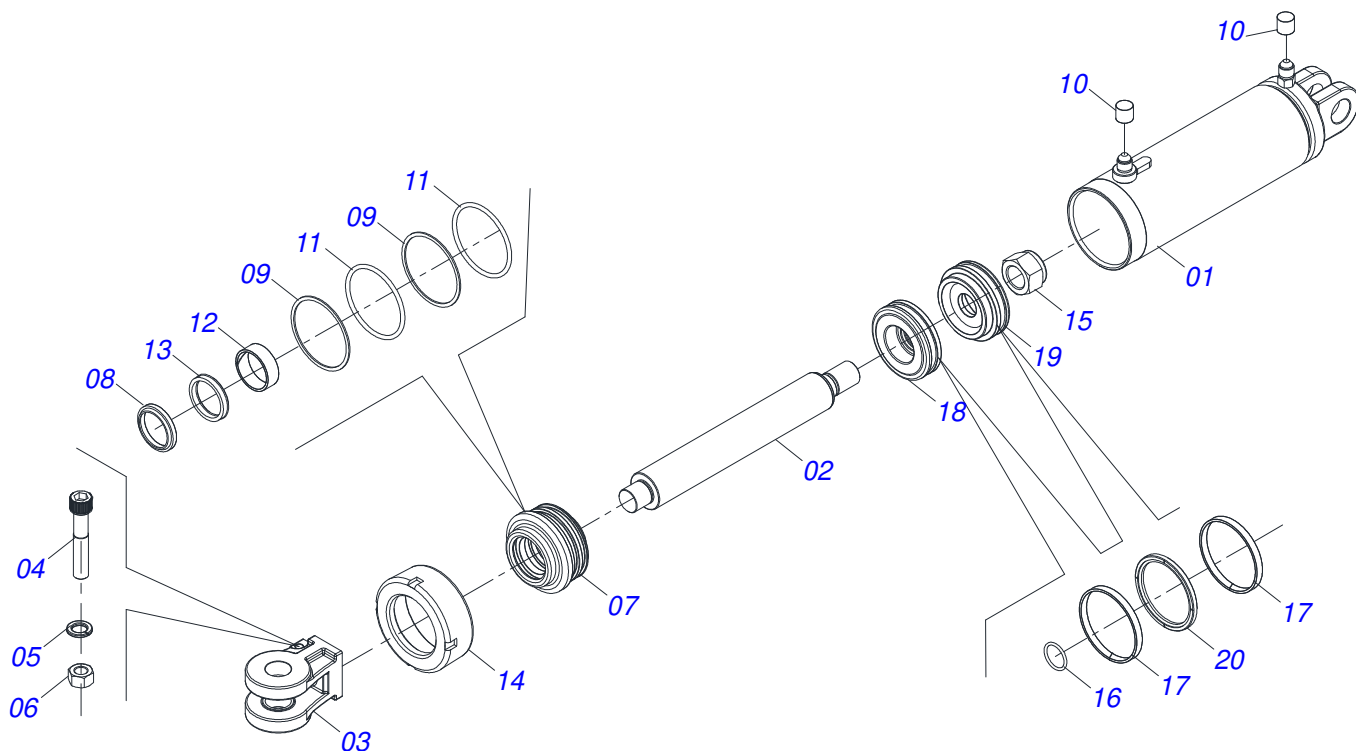
| Item | Code | Description | See page | QT |
|------|------------|----------------------------------|----------|----|
| 01 | 0511047076 | SHANKS SYSTEM ASSY | 7 | 01 |
| 01A | 0502011264 | ARM AST/MATIC | | 01 |
| 02 | 0502011551 | REAR FIXER | | 01 |
| 03 | 0521013024 | 28,50 X 184 AXLE | | 02 |
| 04 | 0503010571 | 1/4" X 1.1/2 COTTERPIN | | 08 |
| 05 | 0502011164 | SUPPORT SPRING | | 01 |
| 06 | 0503011195 | 7/16" X 1.3/4" BOLT | | 01 |
| 07 | 0503010244 | 7/16" NUT | | 01 |
| 08 | 0511015689 | 1.1" X 3.5" COUPLING SHAFT | | 02 |
| 09 | 0521011631 | AUTOMATIC RESET | | 01 |
| 10 | 0624010005 | POINT SUBSOILER 16"X3"X1/2" E019 | | 01 |
| 11 | 0503014190 | 1/2 BSW "1.1/2 BOLT | | 03 |
| 12 | 0503011440 | SPRING WASHER | | 03 |
| 13 | 0503010020 | 1/2"NUT | | 03 |
| 14 | 0502011552 | FRONT FIXER | | 01 |
| 15 | 0511019527 | 1" X 8" BOLT | | 04 |
| 16 | 0503011438 | SPRING WASHER | | 04 |
| 17 | 0503010340 | 1" NUT | | 04 |



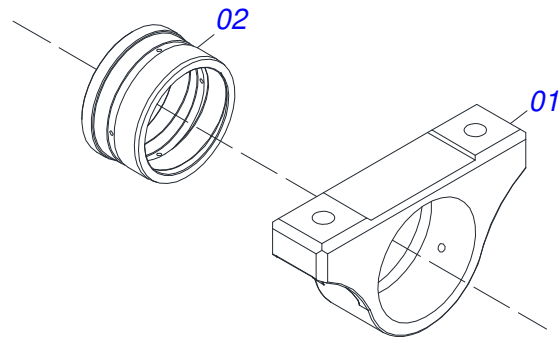
| Item | Code | Description | See page | QT |
|------|------------|---|----------|----|
| 01 | 0503012864 | TYRE | | 01 |
| 02 | 0503010033 | 7.50 X 16 INNER TIRE | | 01 |
| 03 | 0521062708 | WHEEL 5,50 X 16 X 118 X 6F 16,50 X 152,40 | | 01 |



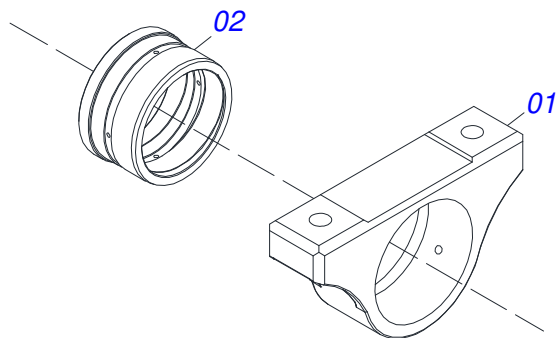
| Item | Code | Description | See page | QT |
|------|------------|-------------------------------|----------|----|
| 01 | 0521066160 | CYLINDER CASE | | 01 |
| 02 | 0571019558 | HYDRAULIC CYLINDER TURNBUCKLE | | 01 |
| 03 | 0502040747 | 32.54 CLEVIS CLAMP | | 01 |
| 04 | 0503011094 | 3/8" X 2" BOLT | | 01 |
| 05 | 0503011443 | 3/8" SPRING WASHER | | 01 |
| 06 | 0503010026 | 3/8" NUT | | 01 |
| 07 | 0502011220 | 2" X 4.5" RING SUPPORT | | 01 |
| 08 | 0503015636 | SCRAPER SEAL | | 01 |
| 09 | 0503011893 | BACK-UP RING, 8-346 | | 01 |
| 10 | 0503030385 | CYLINDER PLUG N-002 | | 02 |
| 11 | 0503011892 | O' RING, 2-346 N 3006-9B | | 01 |
| 12 | 0503015635 | U-CUP SEAL | | 01 |
| 13 | 0503015634 | RING SLYDRING | | 01 |
| 14 | 0502011222 | 0.56" END CAP | | 01 |
| 15 | 0503010817 | 1.1/4" SELF LOCKING NUT | | 01 |
| 16 | 0503010345 | 2-218 N 3006-9B O'RING | | 01 |
| 17 | 0503017881 | RING GUIDE | | 02 |
| 18 | 0581012603 | PISTON 114.30 BP | | 01 |
| 19 | 0581012604 | PISTON 114.30 BP | | 01 |
| 20 | 0503018652 | SEAL | | 01 |



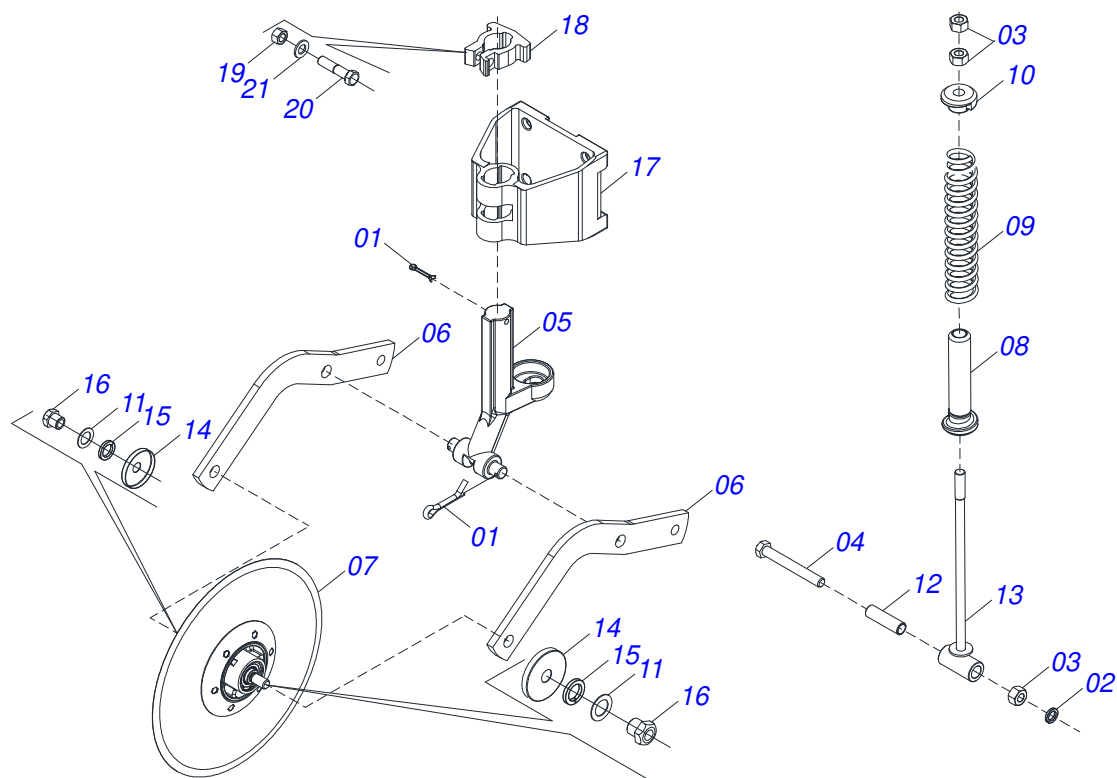
| Item | Code | Description | See page | QT |
|------|------------|-------------------------------|----------|----|
| 01 | 0521066159 | CYLINDER CASE | | 01 |
| 02 | 0571019558 | HYDRAULIC CYLINDER TURNBUCKLE | | 01 |
| 03 | 0502040747 | 32.54 CLEVIS CLAMP | | 01 |
| 04 | 0503011094 | 3/8" X 2" BOLT | | 01 |
| 05 | 0503011443 | 3/8" SPRING WASHER | | 01 |
| 06 | 0503010026 | 3/8" NUT | | 01 |
| 07 | 0581010678 | 50,80 X 101 RING SUPPORT | | 01 |
| 08 | 0503015636 | SCRAPER SEAL | | 01 |
| 09 | 0503011061 | 8-342 BACK-UP RING | | 02 |
| 10 | 0503030385 | CYLINDER PLUG N-002 | | 02 |
| 11 | 0503010338 | 2-342 N 3006-9B O'RING | | 02 |
| 12 | 0503018025 | RING GUIDE | | 01 |
| 13 | 0503018026 | 1870-2000-375 B GASKET | | 01 |
| 14 | 0502012822 | 101.60 END CAP | | 01 |
| 15 | 0503010817 | 1.1/4" SELF LOCKING NUT | | 01 |
| 16 | 0503010345 | 2-218 N 3006-9B O'RING | | 01 |
| 17 | 0503017889 | RING GUIDE | | 02 |
| 18 | 0581012600 | PISTON | | 01 |
| 19 | 0581012599 | PISTON | | 01 |
| 20 | 0503018651 | SEALING | | 01 |



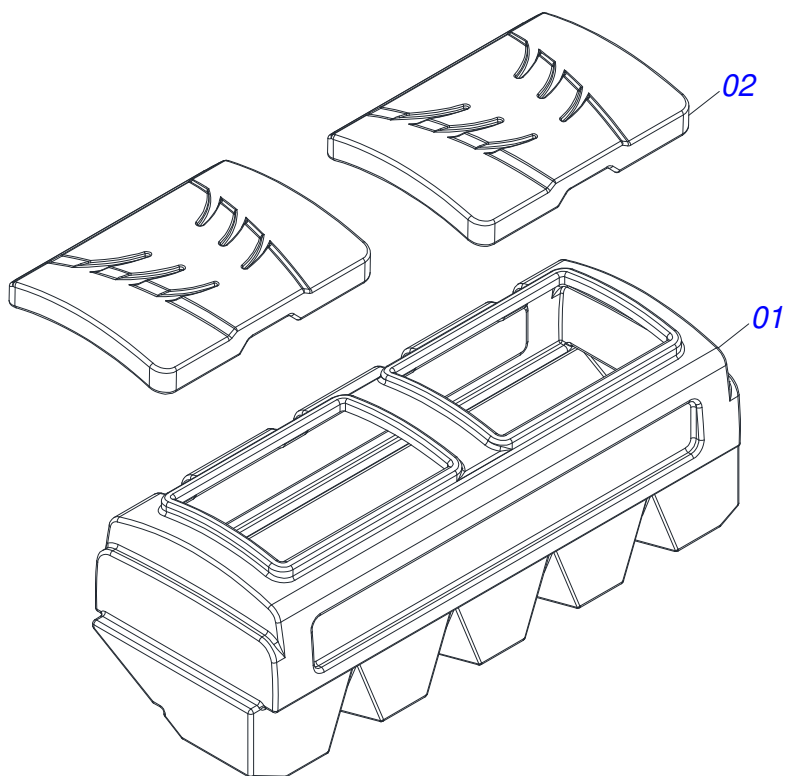
| Item | Code | Description | See page | QT |
|------|------------|--------------------------------|----------|----|
| 001 | 0502012509 | RIGHT PIVOT BEARING | | 01 |
| 002 | 0551018339 | SLEEVE NYLON 114,40 X 140 X 76 | | 01 |



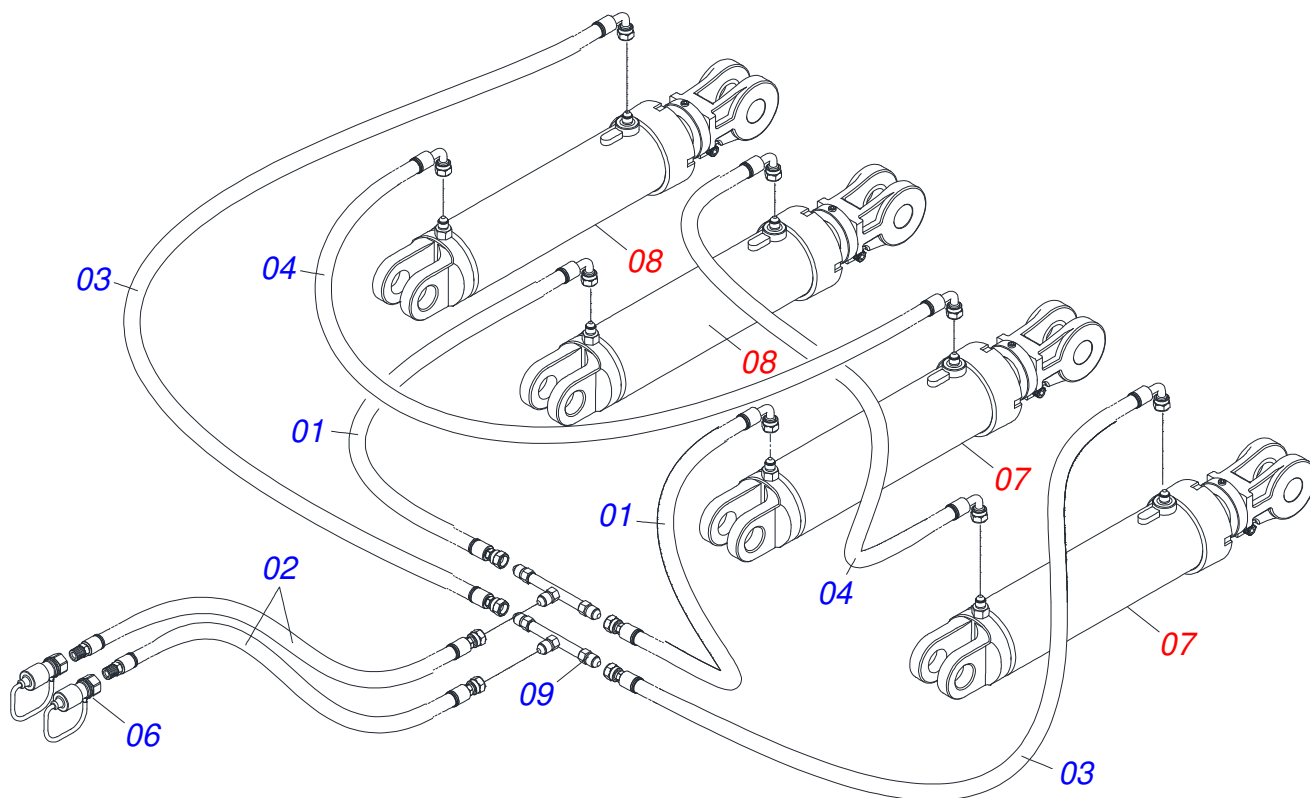
| Item | Code | Description | See page | QT |
|------|------------|--------------------------------|----------|----|
| 001 | 0502012273 | PIVOT BEARING | | 01 |
| 002 | 0551018339 | SLEEVE NYLON 114,40 X 140 X 76 | | 01 |



| Item | Code | Description | See page | QT |
|------|------------|-----------------------------------|----------|----|
| 01 | 0503010571 | 1/4" X 1.1/2 COTTERPIN | | 02 |
| 02 | 0503011442 | 3/4" SPRING WASHER | | 01 |
| 03 | 0503010014 | 3/4" NUT | | 03 |
| 04 | 0503011198 | C3/4" X 6" SCREW | | 01 |
| 05 | 0502012025 | BLADE DISC SUPPORT | | 01 |
| 06 | 0521019800 | BLADE DISC BREAK | | 02 |
| 07 | 0501052139 | 18 BLADE DISC WITH FLAT PLAN DISC | | 01 |
| 08 | 0511061576 | SPRING GUIDE | | 01 |
| 09 | 0503031679 | COMPRES SPRING | | 01 |
| 10 | 1902020393 | SPRING UPPER SUPPORT | | 01 |
| 11 | 0511015346 | FLAT WASHER | | 02 |
| 12 | 0521010452 | SLEEVE | | 01 |
| 13 | 0511060915 | ROD SPRING | | 01 |
| 14 | 0521015376 | DUST CLOAK | | 02 |
| 15 | 0503011438 | SPRING WASHER | | 02 |
| 16 | 0521013510 | 3/4" NUT | | 02 |
| 17 | 0502012026 | BLADE DISC FIXER SUPPORT | | 01 |
| 18 | 1902012024 | FIXER SUPPORT BUSHING | | 01 |
| 19 | 0503010129 | 5/8" NUT | | 01 |
| 20 | 0503013184 | 5/8" X 2-3/4" BOLT G.8 | | 01 |
| 21 | 0501011299 | FLAT WASHER | | 01 |



| Item | Code | Description | See page | QT |
|------|------------|----------------------|----------|----|
| 001 | 0503031955 | SILO LEFT FERTILIZER | | 01 |
| 002 | 0503031956 | TUBE SILO FERTILIZER | | 02 |



| Item | Code | Description | See page | QT |
|------|------------|---------------------------------------|----------|----|
| 01 | 0501080025 | TR-TC HOSE ASSY | | 02 |
| 02 | 0501080510 | 3/8" X 137" TR-TR HOSE ASSY | | 02 |
| 03 | 0501080408 | HOSE 3/8 X 3200 TR-TC | | 02 |
| 04 | 0501080579 | TC-TC HOSE ASSY | | 02 |
| 05 | 0503033158 | PLASTIC BAG | | 01 |
| 06 | 0501053834 | MALE QUICK COUPLER WITH CAP - 1/2 NPT | | 04 |
| 07 | 0521045631 | HYDRAULIC CYLINDER | 9 | 02 |
| 08 | 0521045632 | HYDRAULIC CYLINDER | 10 | 02 |
| 09 | 0501072676 | OIL DISTRIBUTOR BODY | | 01 |



www.marchesan.com.br



Technical Publications | Elaboration and Revision
LORENA ROCHA ALVES