

PARTS CATALOG

DOUBLE OFFSET DISK HARROW

VTH 1009T

Code: 0501092404



Series: S-1218

Rev.: 00

Date Rev.: JANEIRO/2019

ORIGINAL PARTS
TATU



PRODUCTS

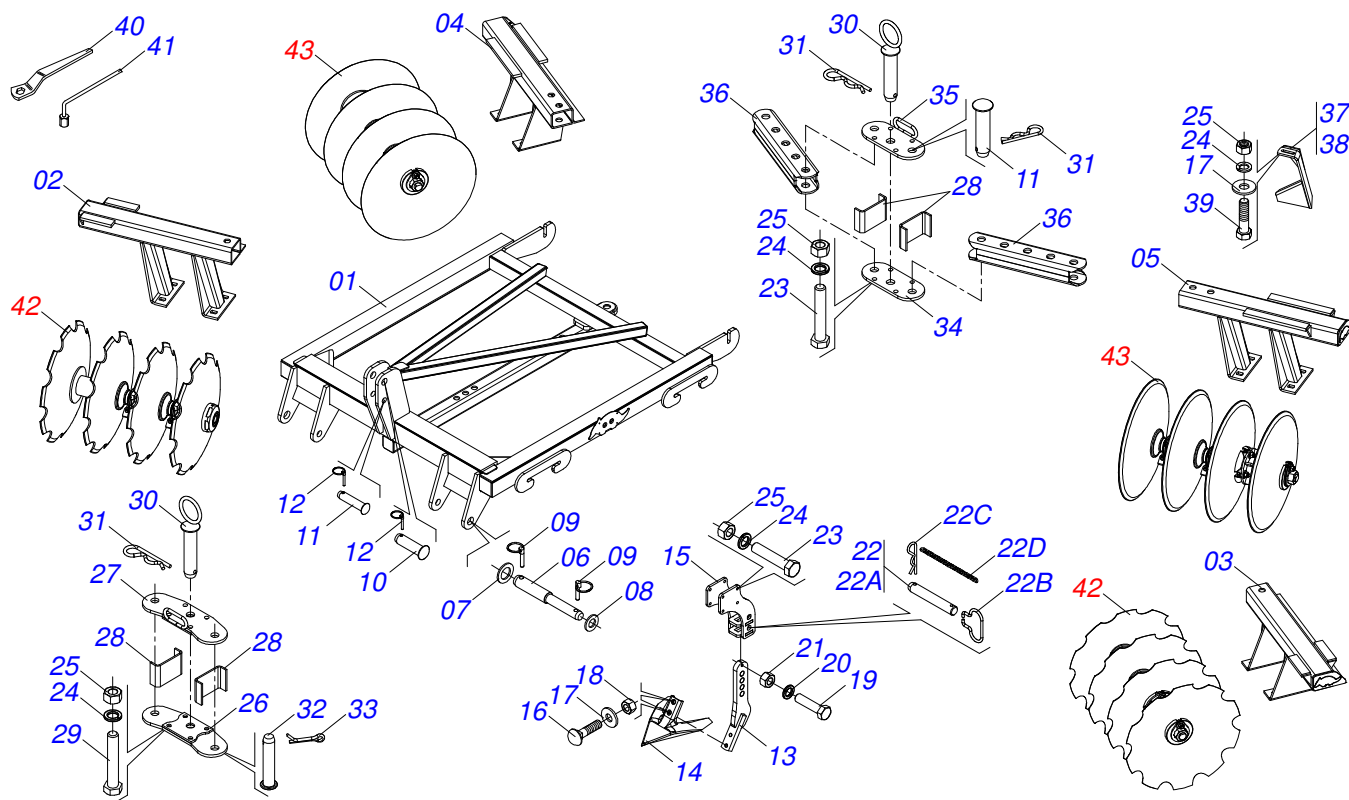
Code	Description
0102430652	VTDH 1009T 16 X 24 X 4,75 DM FF S-1218

ATTENTION: **IMPORTANT**

MARCHESAN S/A RESERVES THE RIGHT AT ANY TIME TO MAKE IMPROVEMENTS IN THE DESIGN, MATERIAL OR SPECIFICATIONS OF MACHINERY, EQUIPMENT OR PARTS WITHOUT THEREBY BECOMING LIABLE TO MAKE SIMILAR CHANGES IN MACHINERY, EQUIPMENT OR PARTS PREVIOUSLY SOLD.

INDEX

0909095070	FRAME ASSY	1
0909095072	FRONT DISC GANG SECTION	2
0909095074	REAR DISC GANG SECTION	3
0521047183	BEARING	4



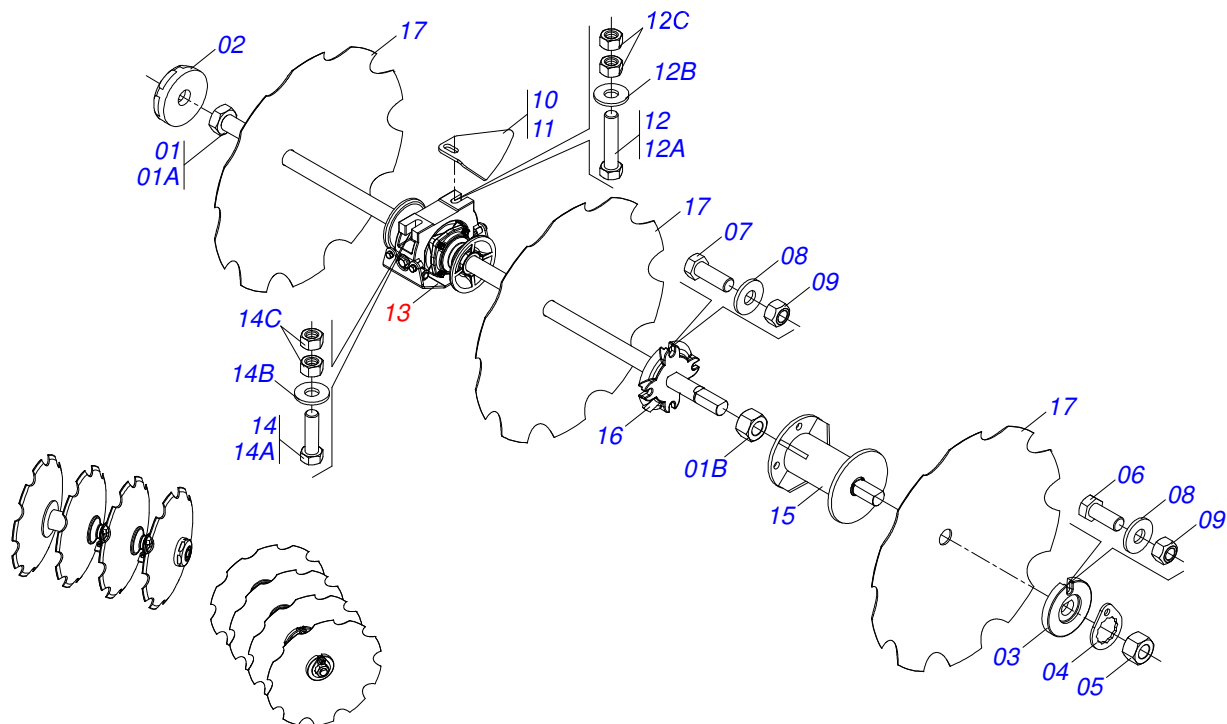
Item	Code	Description	QT
01	0511069738	FRAME GH2 1009T 16 A22	01
02	0521069607	FRONT FRAME RIGHT 06 HOLES	01
03	0521069608	LEFT FRONT FRAME 06 HOLES	01
04	0521069609	REAR FRAME RIGHT 06 HOLES	01
05	0521069610	LEFT REAR FRAME 06 HOLES	01
06	0541015542	1.1/8" HITCH AXLE	02
07	0511017480	FLAT WASHER	02
08	0501012916	FLAT WASHER 38,50 X 66 X 4,75 ZN	02
09	0503030430	7/16 X 2" PIN LOCK	04
10	0511011887	COUPLING SHAFT	01
11	0521010578	COUPLING SHAFT	03
12	0503030085	LOCK PIN	02
13	0521069605	SUPPORT	01
14	0628095654	CHISEL SWEEP	01
15	0521069603	SUPPORT	01
16	0501010141	1/2" X 2-1/2" BOLT	02
17	0511017302	FLAT WASHER	10
18	0503012682	1/2" BSW NUT	02
19	0503010849	3/8" X 1-1/2" BOLT	01
20	0503010025	3/8" SPRING WASHER	01
21	0503010026	3/8" NUT	01
22	0521054135	AXIS 25 X EC 130 ASSY	02
22A	0581018637	AXIS 25 X 155 X EC 130 FR 7,14	01
22B	0503034755	HANDLE PIN HITCH	01
22C	0503031035	HAIR PIN	01
22D	0503034756	CHAIN 3,00 X 16	01
23	0503010706	1/2" X 4.1/2" BOLT	08
24	0503010019	1/2" SPRING WASHER	20
25	0503010060	1/2" NUT	20
26	0511068795	FRONT LOWER REGULACION	01
27	0511068780	FRONT UPPER REGULACION	01



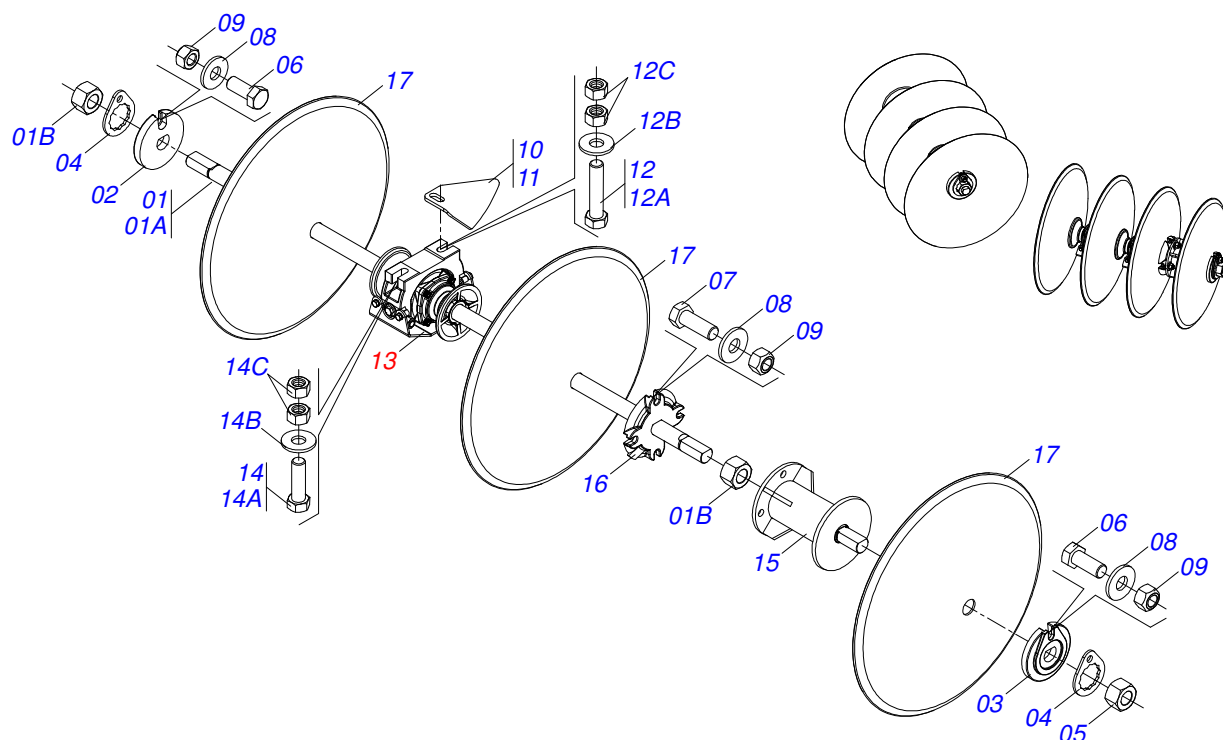
VTH 1009T
FRAME ASSY

Page 1
0909095070

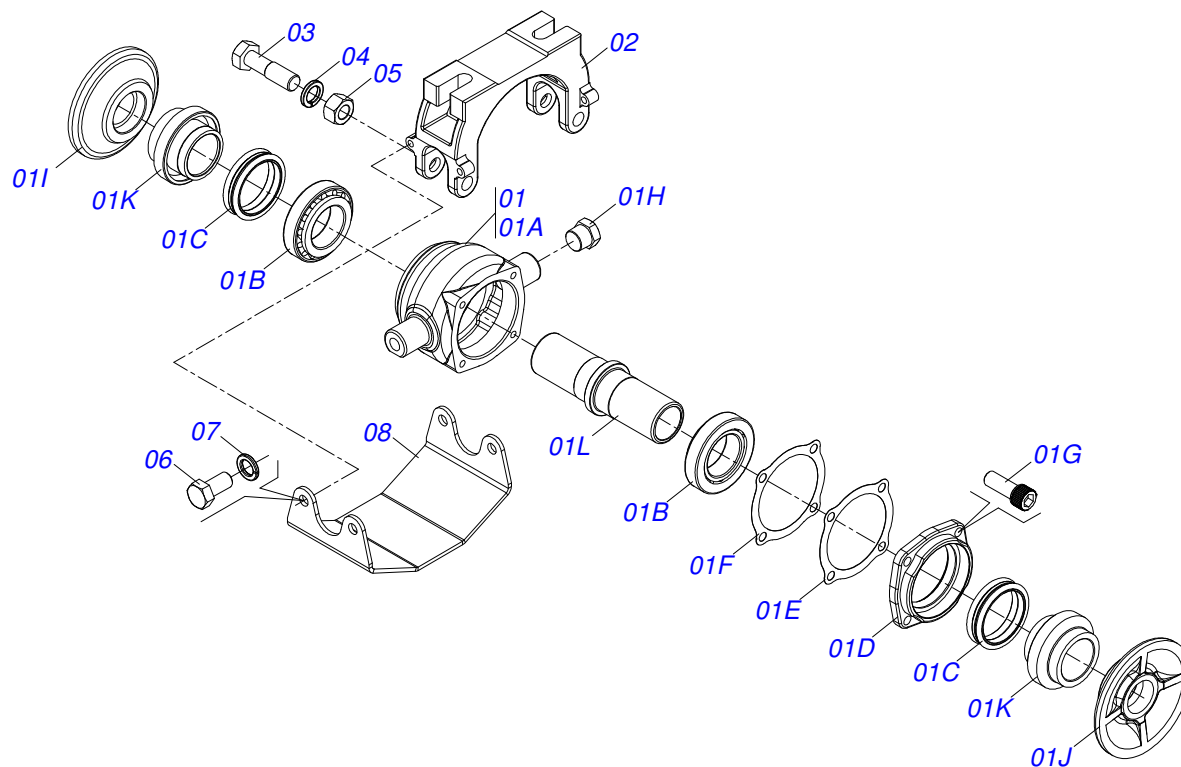
Item	Code	Description	QT
28	0541018541	REGULATOR GUIDES	04
29	0503010384	1/2" X 5" BOLT	04
30	0521064090	COUPLING SHAFT	02
31	0503031035	HAIR PIN	08
32	0521010581	0.9" X 4.9" COUPLING SHAFT	02
33	0503010571	1/4" X 1.1/2 COTTERPIN	02
34	0541018540	REGULATORY BODY REAR BASE	01
35	0511066991	REAR ADJUSTMENT BASE	01
36	0511066990	ADJUSTMENT TUBE	02
37	0511066927	LH FRONT/RH REAR SCRAPER	02
38	0511066928	RH FRONT/LH REAR SCRAPER	02
39	0503010920	1/2" X 1.1/2" BOLT	08
40	0501011432	1-1/2" AND 1-5/8 GANG BOLT WRENCH	01
41	0501068273	5/8" WRENCH	01
42	0909095072	FRONT DISC GANG SECTION	01
43	0909095074	REAR DISC GANG SECTION	01



Item	Code	Description	QT
01	0521048900	AXIS 1.1/2 6FPP X 577 WITH NUT WELDED	02
01A	0521069604	AXIS 1.1/2 UNC 6FPP X 577 WITH NUT WELDED	02
01B	0501010110	1.1/2" NUT	02
02	0502010619	1.1/2" EXTERNAL AXLE WASHER	02
03	0502010872	1-1/2" INNER AXLE WASHER	02
04	0501018592	1.5/8" NUT LOCK	02
05	0501010110	1.1/2" NUT	02
06	0503011267	5/8" X 1.1/2" BOLT	02
07	0503010232	5/8" X 1.3/4" BOLT	08
08	0501012140	FLAT WASHER	10
09	0503012412	HEX SELF ADJUSTING NUT 5/8 UNC S	10
10	0581019572	FRONT CLEANER LEFT REAR (BEARING)	02
11	0581019573	FRONT CLEANER/RIGHT REAR (BERING)	02
12	0521048902	SCREW ASSEMBLY 5/8 UNC 3	04
12A	0501011541	5/8" X 3" BOLT	04
12B	0501012140	FLAT WASHER	04
12C	0503010013	5/8" NUT	08
13	0521047183	BEARING	04
14	0521047597	ASSEMBLY SCREW 5/8 UNC X 2.1/2 BEARING	04
14A	0503010233	5/8" X 2-1/2" BOLT	04
14B	0501012140	FLAT WASHER	04
14C	0503010013	5/8" NUT	08
15	0521069606	SEPARATOR 186 ESP 230 FRONT FURROW FILLER	02
16	0581019566	LOCK INTERNAL FURROW FILE AXIS 1.1/2	02
17	0602030419	24" X 4,75" NOTCHED DISC BLADE	08



Item	Code	Description	QT
01	0521048901	SHAFT 1.1/2 UNC 6 FPP X 605 WITH NUT	02
01A	0581019576	AXIS 1.1/2 UNC 6FPP X 605	02
01B	0501010110	1.1/2" NUT	04
02	0502010872	1-1/2" INNER AXLE WASHER	02
03	0502010871	1-1/2" EXTERNAL AXLE WASHER	02
04	0501018592	1.5/8" NUT LOCK	04
05	0501010110	1.1/2" NUT	02
06	0503011267	5/8" X 1.1/2" BOLT	04
07	0503010232	5/8" X 1.3/4" BOLT	08
08	0501012140	FLAT WASHER	12
09	0503012412	HEX SELF ADJUSTING NUT 5/8 UNC S	12
10	0581019572	FRONT CLEANER LEFT REAR (BEARING)	02
11	0581019573	FRONT CLEANER/RIGHT REAR (BERING)	02
12	0521048902	SCREW ASSEMBLY 5/8 UNC 3	04
12A	0501011541	5/8" X 3" BOLT	04
12B	0501012140	FLAT WASHER	04
12C	0503010013	5/8" NUT	08
13	0521047183	BEARING	04
14	0521047597	ASSEMBLY SCREW 5/8 UNC X 2.1/2 BEARING	04
14A	0503010233	5/8" X 2-1/2" BOLT	04
14B	0501012140	FLAT WASHER	04
14C	0503010013	5/8" NUT	08
15	0521062027	186 SPACER	02
16	0502012376	1-1/2" EXTERNAL AXLE LOCK	02
17	0601031114	24" X 4,75 PLAIN DISC BLADE	08



Item	Code	Description	QT
01	0521050836	BEARING DMO 225 X 1.1/2	01
01A	0502012839	BEARING BOX	01
01B	0503012171	32210 ROLLER BEARING	02
01C	0503030026	SEAL LP JB-253	02
01D	0502020424	HOUSING CAP DM	01
01E	0503030013	4.4" X 3.5" X 0.004" JOINT	02
01F	0503030684	4.4" X 3.5" X 0.004" JOINT	01
01G	0503010134	3/8" X 1" BOLT	04
01H	0503010856	OIL PLUG	02
01I	0502010605	INNER FLANGE	01
01J	0502010604	OUTER FLANGE	01
01K	0502010821	SEAL RETAINER	02
01L	0502040611	AXLE	01
02	0502012854	SUPPORT BEARING	01
03	0501011541	5/8" X 3" BOLT	02
04	0503010027	SPRING WASHER	02
05	0503010013	5/8" NUT	02
06	0503011334	3/8" X 3/4" BOLT	04
07	0503010025	3/8 SPRING WASHER	04
08	0581014143	PROTECTIVE COVER BEARING	01



MARCHESAN IMPLEMENTOS E MÁQUINAS AGRÍCOLAS TATU S.A.
AV. Marchesan, 1979 - Post office box, 131 - CEP 15994-900 - Matão - SP - Brazil
Phone +55 16.3382-8282
(FAX Parts) + 55 16.3382. 8297 - (Export) + 55 16.3382.1003
e.mail: tatu@marchesan.com.br www.marchesan.com.br

Technical Publications: Elaboration
ALESSANDRA PATRICIA KAWAHARA CARRILI

Technical Publications: Revision
ALESSANDRA PATRICIA KAWAHARA CARRILI

Contact Catálogo:
E-mail = jgaspari@marchesan.com.br

**ORIGINAL PARTS
TATU**

