

ROTARY CUTTERS

RC2 1500

Code: 0501092382

Series: S-0214

Revision: 01

Date Revision: JUNHO/2021

PARTS CATALOGUE



MARCHESAN



PRODUCTS

Code	Description
0104010009C	RC2 1500 C/R C/PROT CORR C/RS EXP S-0214
0104010009	RC2 1500 C/R PROT CORRENTE S-0214
0104010005	RC2 1500 C/R S/PROT EXP S-0214

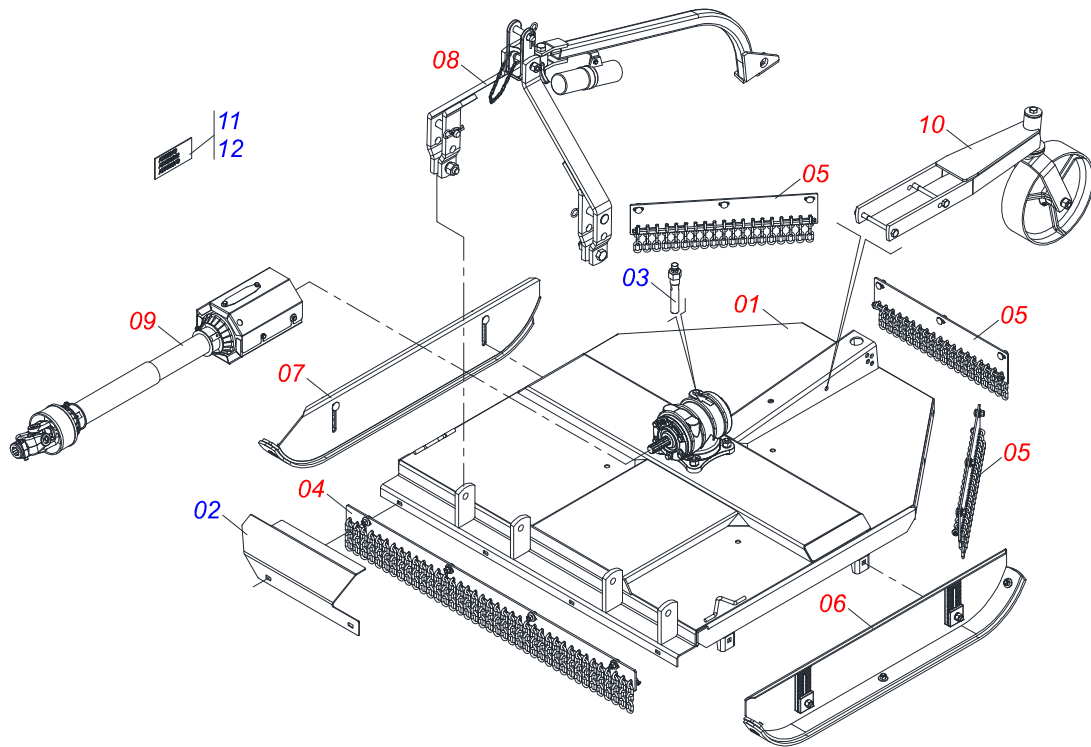
ATTENTION: IMPORTANT

Marchesan S.A. reserves the right to improve and/or modify the technical features of its products, without obligation to do the same with those products already sold and without prior knowledge of the dealer or the customer. The photos are only illustrative.

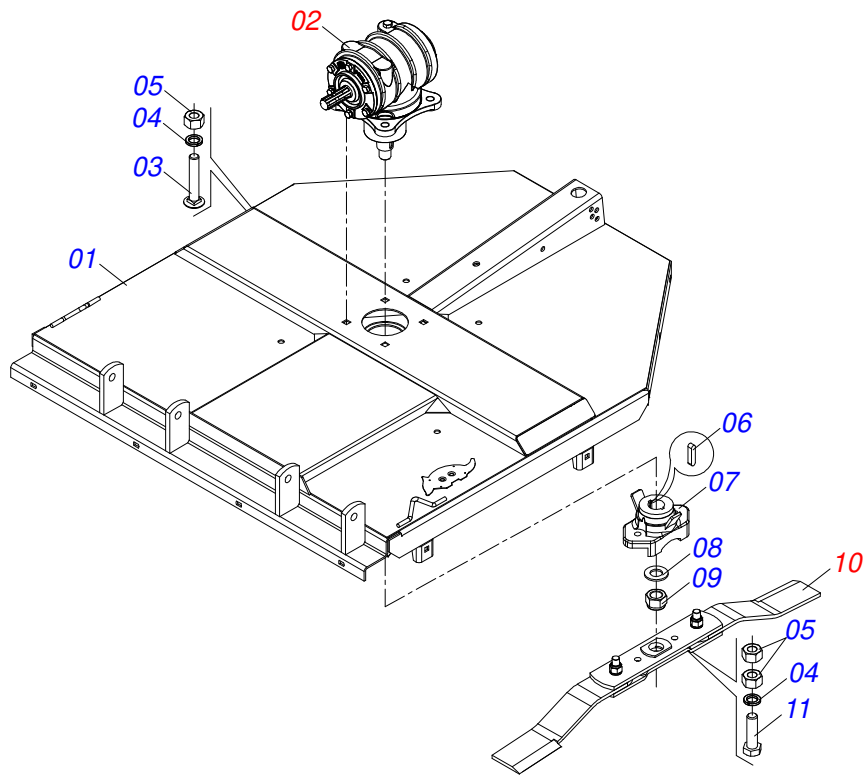


INDEX

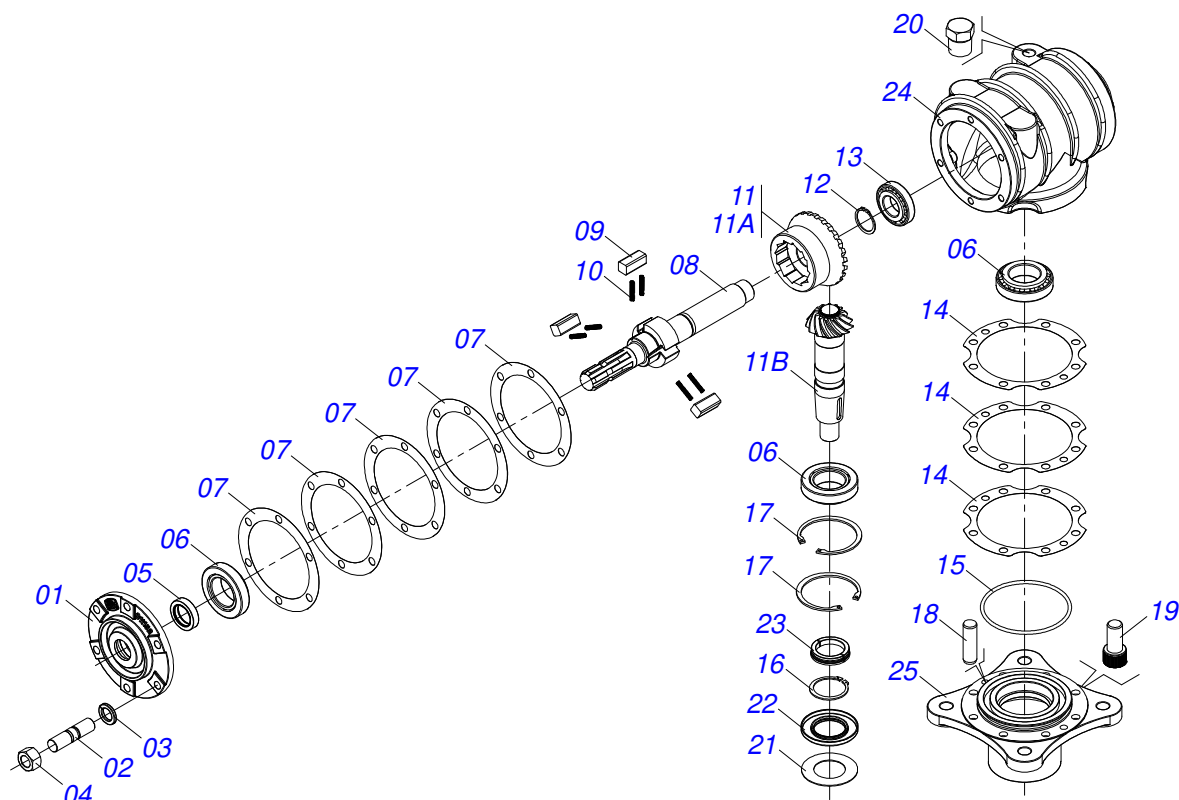
0909094996	FRAME ASSY	1
0511056697	SEMI MOUNTED FRAME	2
0501046851	MULTIPLIER	3
0501056321	SUPPORT ROTARY CUTTER BLADES	4
0521050678	CHAIN PROTECTION (FRONT)	5
0521050677	REAR CURRENT PROTECTION	6
0909094979	LEFT SKID ASSY	7
0909094980	RIGHT SKID ASSY	8
0909094997	HEAD ASSY	9
0521051872	DOOR ASSY INSTRUCTION MANUAL	10
0909095803	MULTIPLIER ASSY	11
0501047949	DRIVE SHAFT	12
0501043660	FRICTION 90 KG/M	13
0511047301	CARRYING WHEELS ASSY	14
0501058460	CARRYING WHEELS	15



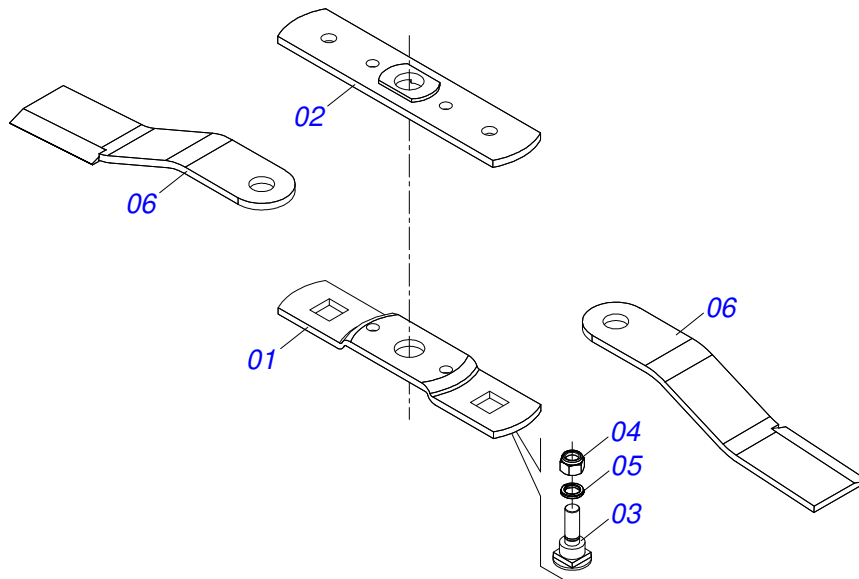
Item	Code	Description	See page	QT
01	0511056697	SEMI MOUNTED FRAME	2	01
02	0581011895	FRONT PROTETION FRAME		01
03	0501110186	OIL SMALLER LEVEL INDICATOR		01
04	0521050678	CHAIN PROTECTION (FRONT)	5	01
05	0521050677	REAR CURRENT PROTECTION	6	03
06	0909094979	LEFT SKID ASSY	7	01
07	0909094980	RIGHT SKID ASSY	8	01
08	0909094997	HEAD ASSY	9	01
09	0909095803	MULTIPLIER ASSY	11	01
10	0511047301	CARRYING WHEELS ASSY	14	01
11	0503031087	ADHESIVE LABEL		01
12	0503034247	ADHESIVE LABEL POINT LUBRICATION		01



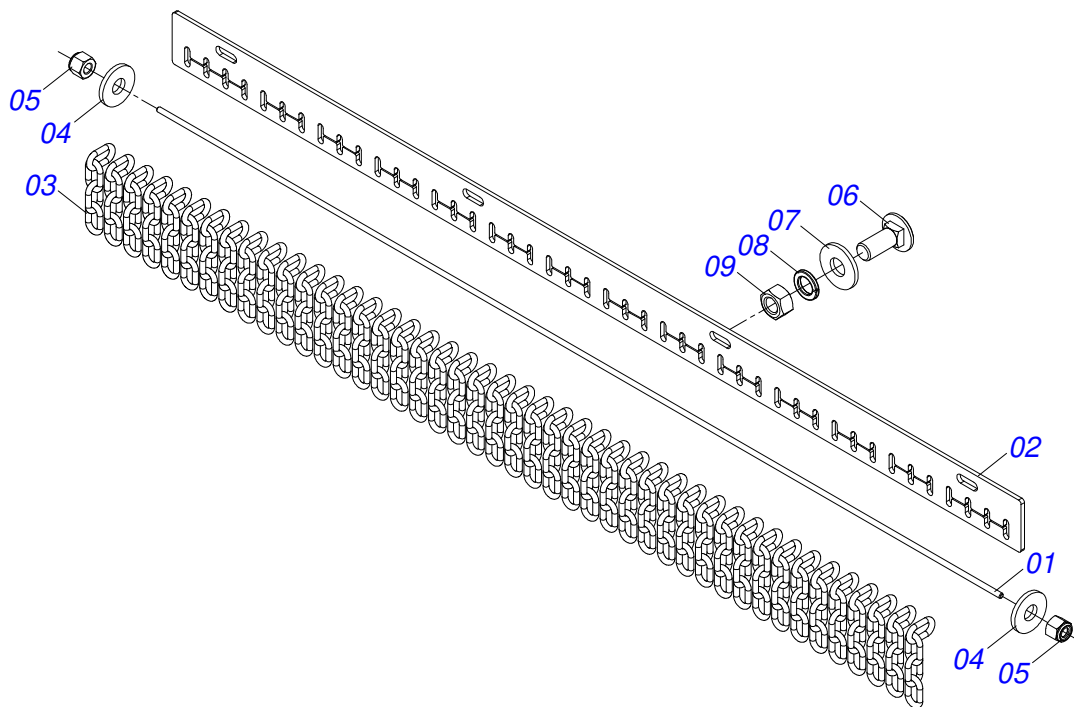
Item	Code	Description	See page	QT
01	0521065559	FRAME		01
02	0501046851	MULTIPLIER	3	01
03	0503013122	3/4 UNC X 4.1/4 CAPQ G.5 ZNBOLT		04
04	0503011442	3/4" SPRING WASHER		06
05	0503010014	3/4" HEX NUT		08
06	0501010536	KEYWAY SQUARE		02
07	0502012453	SUPPORT FLANGE		01
08	0501017779	32 X 60 X 4.75 FLAT WASHER		01
09	0503010817	1.1/4" SELF LOCKING NUT		01
10	0501056321	SUPPORT ROTARY CUTTER BLADES	4	01
11	0503011328	3/4" X 4" BOLT		02



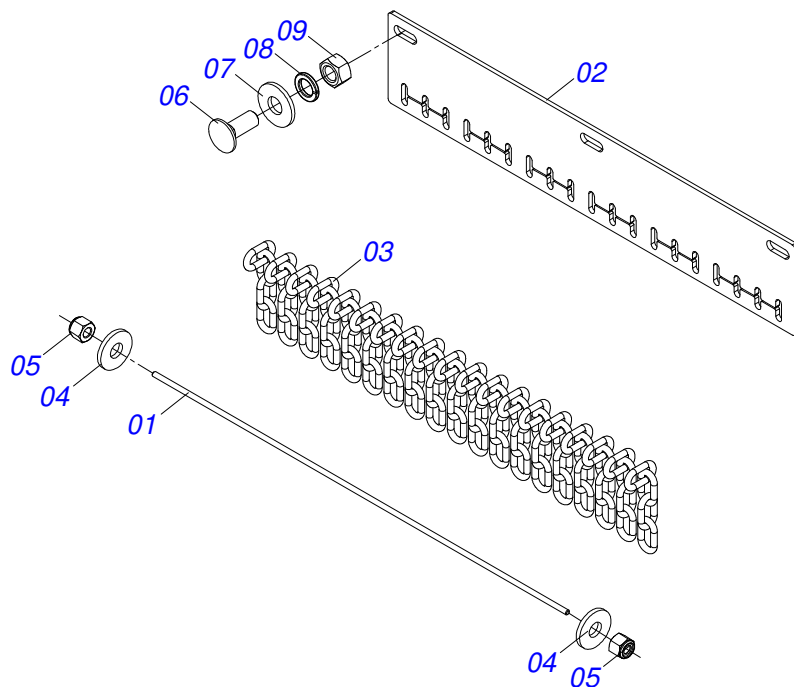
Item	Code	Description	See page	QT
01	0502011152	SMALLER COVER		01
02	0503030084	1/2" X 1/2" X 2.0" STUD		06
03	0503011440	SPRING WASHER		06
04	0503010028	1/2" NUT		06
05	0503011171	00912-BRG SEAL		01
06	0503010006	32210 ROLLER BEARING		03
07	0503030783	7.1" X 5.3" X 0.008" JOINT		05
08	0503050063	UPPER AXLE		01
09	0501010649	RATCHET CLICK		03
10	0503030051	0.2" X 1" X 0.1" COMPRESSION SPRING		06
11	0503060210	25Z CROWN/13Z PINION MLE EG-2142 SET		01
11A	0503050074	25Z CONICAL GEAR		01
11B	0503061048	PINION		01
12	0503010217	501040 CLAMPING RING (FOR AXLE)		01
13	0503010037	30207 ROLLER BEARING		01
14	0503030785	7.9" X 5.9" X 0.008" JOINT		03
15	0503010286	2-355 N 3006-9B O'RING		01
16	0503010396	501060 CLAMPING RING (FOR AXLE)		01
17	0503011190	SEAL RING		02
18	0503017877	PIN GUIDE		02
19	0503010562	1/2" X 1" BOLT		08
20	0503031604	1/2" BSP PLUG		01
21	0521018064	FLAT WASHER		01
22	0503011047	5089 SEAL		01
23	0511010142	LOCK RING		01
24	0502010984	LEFT MULTIPLIER BOX		01
25	0502011393	LOWER HUB		01



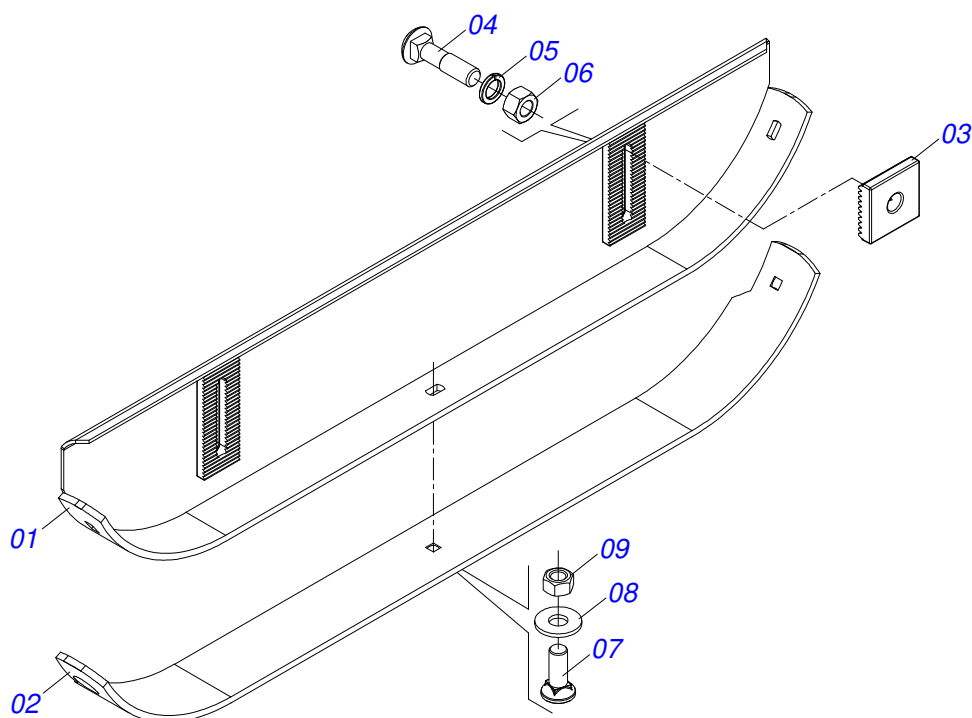
Item	Code	Description	See page	QT
01	0561017368	ROTARY LOWER SUPPORT		01
02	0561017308	SUPPORT UPPER BASE		01
03	0511019000	BOLT		02
04	0503010812	7/8" UNF SELF LOCKING NUT		02
05	0503011447	SPRING WASHER		02
06	0622400054	24.5" X 3.94" X 0.5" ROTARY CUTTER		02



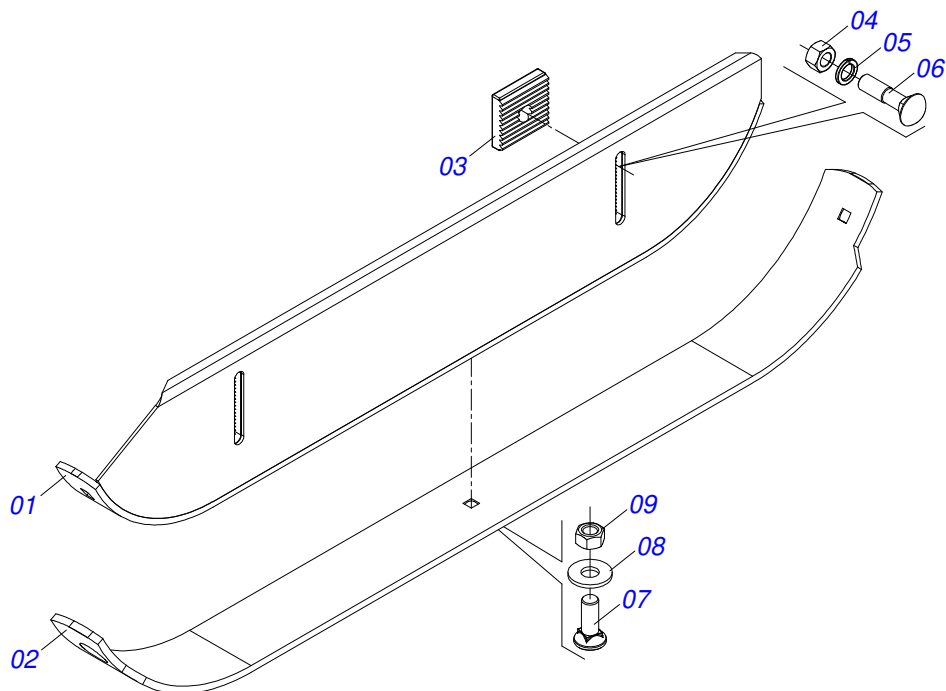
Item	Code	Description	See page	QT
01	0581013925	ROD CHAIN PROTECTION		01
02	0581013924	FRONT CURRENT PROTECTION (1340)		01
03	0511011774	8,00 CHAIN 4 LINK		44
04	0501010984	10,50 X 27 X 3,00 FLAT WASHER		02
05	0503013759	NUT		02
06	0501011600	1/2" X 1-1/4" BOLT		04
07	0511017302	FLAT WASHER 13,50 X 32,50 X 3,0 ZN		04
08	0503010019	1/2" SPRING WASHER		04
09	0503012682	1/2" BSW NUT		04



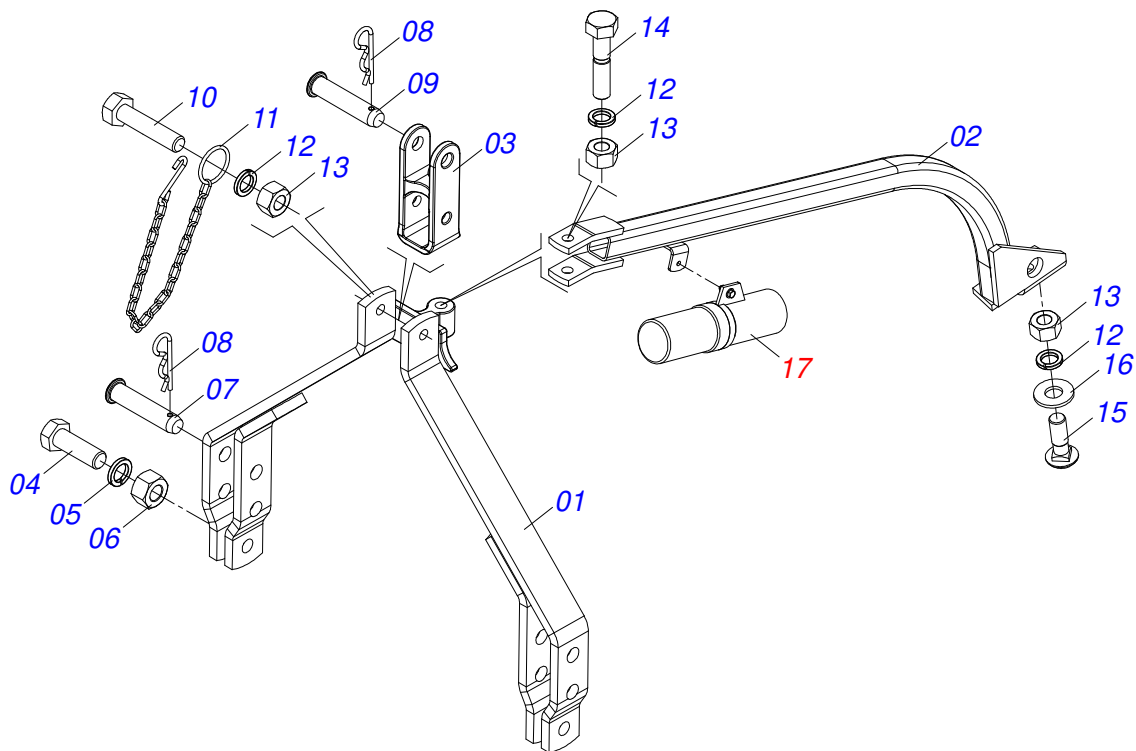
Item	Code	Description	See page	QT
01	0581012997	CURRENT PROTECTION BAR 690		01
02	0581013923	REAR CURRENT PROTECTION (1340)		01
03	0511011774	8,00 CHAIN 4 LINK		19
04	0501010984	10,50 X 27 X 3,00 FLAT WASHER		02
05	0503013759	NUT		02
06	0501011600	1/2" X 1-1/4" BOLT		03
07	0511017302	FLAT WASHER 13,50 X 32,50 X 3,0 ZN		03
08	0503010019	1/2" SPRING WASHER		03
09	0503012682	1/2" BSW NUT		03



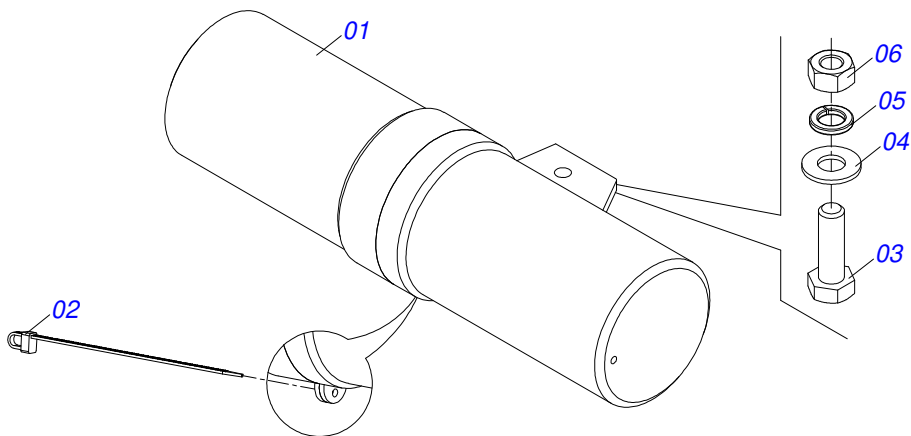
Item	Code	Description	See page	QT
01	0511064762	50"SKATE		01
02	0531019433	SKID GUIDE		01
03	0502010083	SQUARE WASHER		02
04	0501014177	5/8" X 2-1/2" BOLT		02
05	0503010027	5/8 SPRING WASHER		02
06	0503010013	5/8 NUT		02
07	0503012956	1/2" X 1-1/2" BOLT		03
08	0511017302	FLAT WASHER 13,50 X 32,50 X 3,0 ZN		03
09	0503012682	1/2" BSW NUT		03



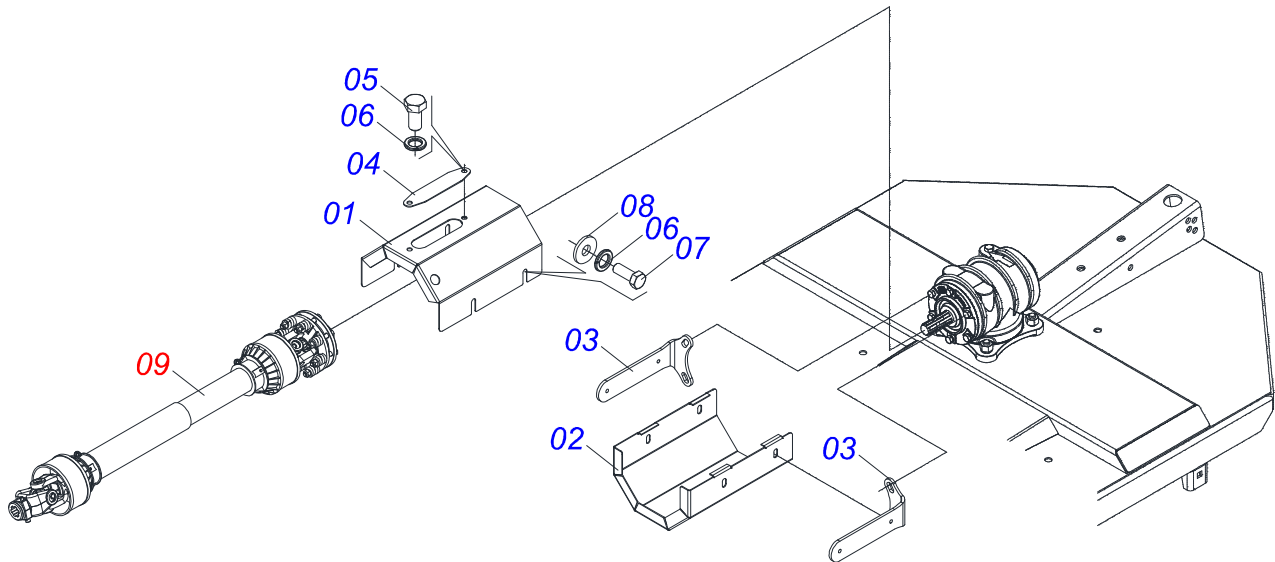
Item	Code	Description	See page	QT
01	0511064764	50"RIGHT SKID		01
02	0531019433	SKID GUIDE		01
03	1902010083	SQUARE WASHER		02
04	0503010013	5/8 NUT		02
05	0503010027	5/8 SPRING WASHER		02
06	0501014177	5/8" X 2-1/2" BOLT		02
07	0503012956	1/2" X 1-1/2" BOLT		03
08	0511017302	FLAT WASHER 13,50 X 32,50 X 3,0 ZN		03
09	0503012682	1/2" BSW NUT		03



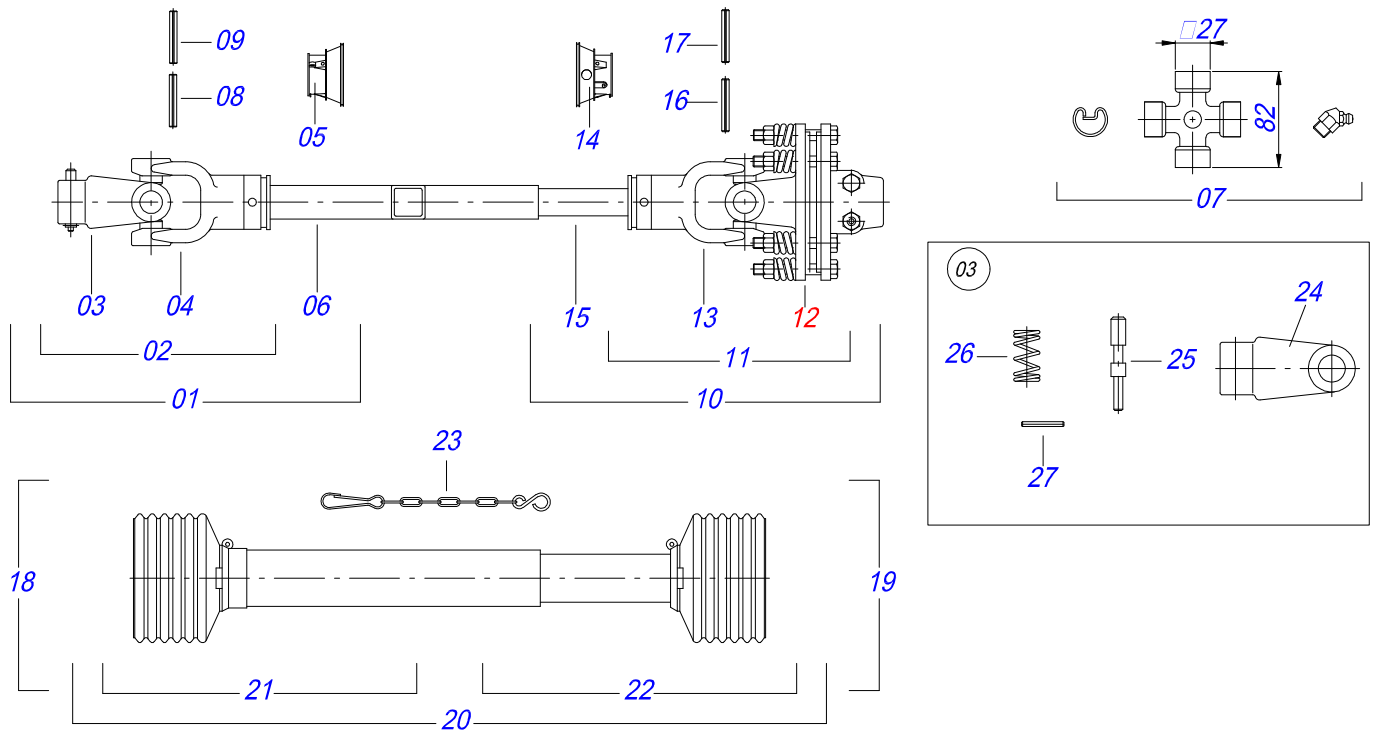
Item	Code	Description	See page	QT
01	0501067832	DRAWBAR		01
02	0501067540	FRENCH HAND		01
03	0502040922	DRAWBAR SUPPLEMENT		01
04	0503011432	BOLT		02
05	0503010012	1" SPRING WASHER		02
06	0501010059	1.5/8 NUT		02
07	0521010596	COUPLING SHAFT		02
08	0503031035	HITCH PIN CLIP		03
09	0521010578	COUPLING SHAFT		01
10	0503011198	C3/4" X 6" SCREW		01
11	0503011981	17.7" CHAIN WITH HOOK/LINK		02
12	0503010023	3/4" SPRING WASHER		03
13	0503010014	3/4" HEX NUT		03
14	0501010216	3/4 UNC X 4.1/2 C S G.5 ZN BOLT		01
15	0501017305	3/4" X 2-1/4" BOLT		01
16	0501010322	FLAT WASHER		01
17	0521051872	DOOR ASSY INSTRUCTION MANUAL	10	01



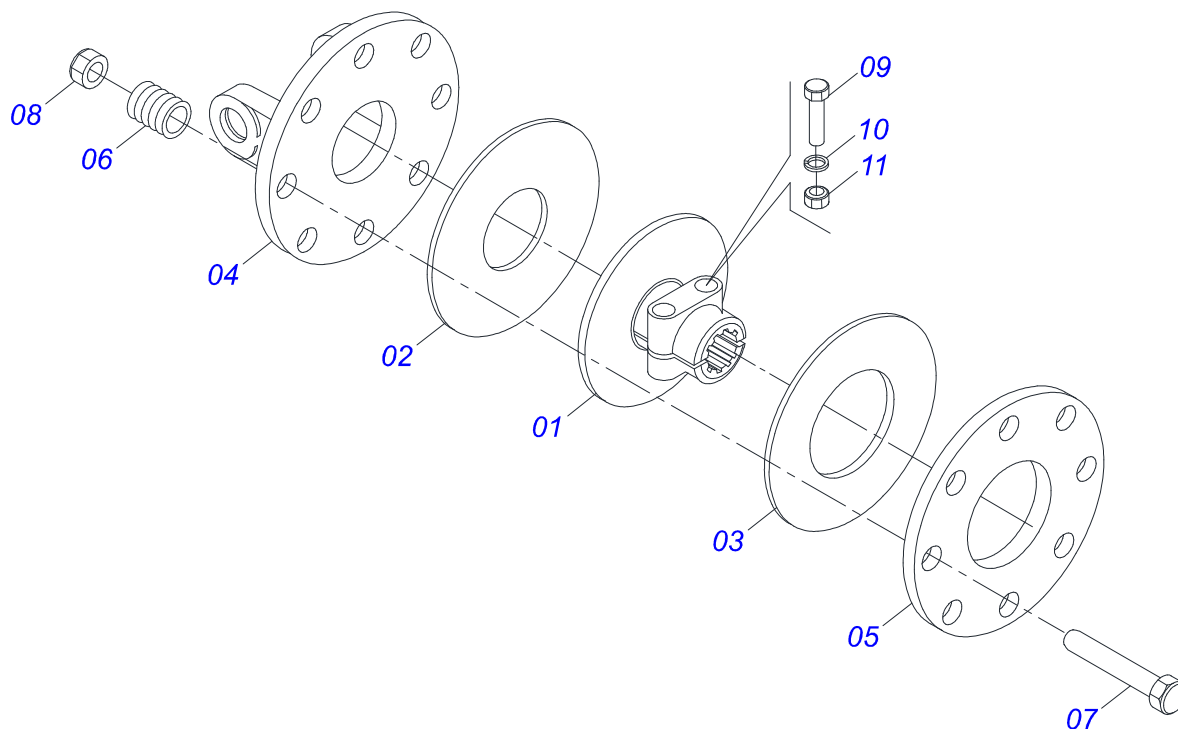
Item	Code	Description	See page	QT
01	0503060100	INSTRUCTIONS MANUAL CANISTER		01
02	0503010267	NYLON CLAMP		01
03	0503010363	BOLT 5/16 UNC X 1 C S G.2 ZN		01
04	0501010694	FLAT WASHER		01
05	0503010179	LOCK WASHER 5/16 ZN 1K01528		01
06	0503010337	5/16" NUT		01



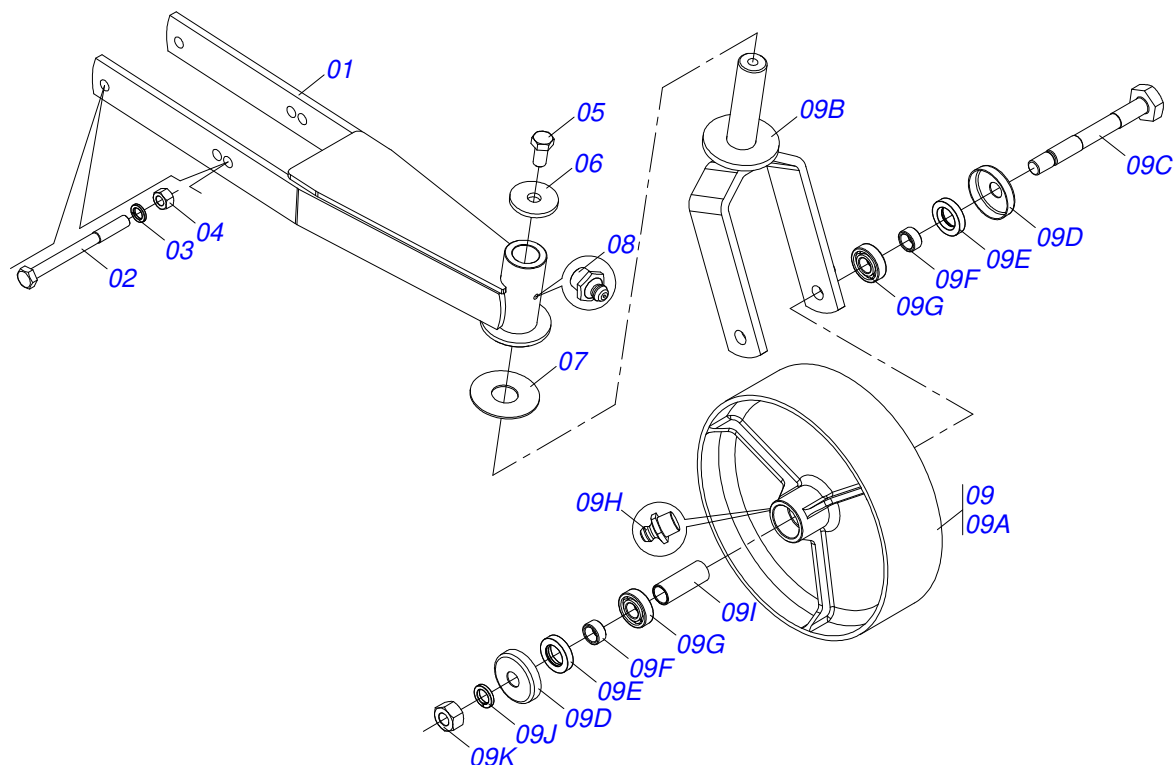
Item	Code	Description	See page	QT
01	0531017832	PROTECTION COVER		01
01.	0501110998	CARDAN TOP PROTECTION COVER		01
02	0581011777	BODY LOWER PROTECTION COAT		01
03	0581011779	FIXER BODE CAP		02
03.	0501110996	LOWER SUPPORT COVER PROTECTION WITH RIVET		02
04	0581012546	LUBRICATION AXIS TRANSMISSION		01
04.	0521052619	TRANSMISSION SHAFT LUBRICATION DOOR WITH ADHESIVE		01
05	0503010256	3/8" X 3/4" BOLT		02
06	0503010025	3/8 SPRING WASHER		06
07	0503010237	3/8" X 1" BOLT		04
08	0501010984	10,50 X 27 X 3,00 FLAT WASHER		04
09	0501047949	DRIVE SHAFT	12	01



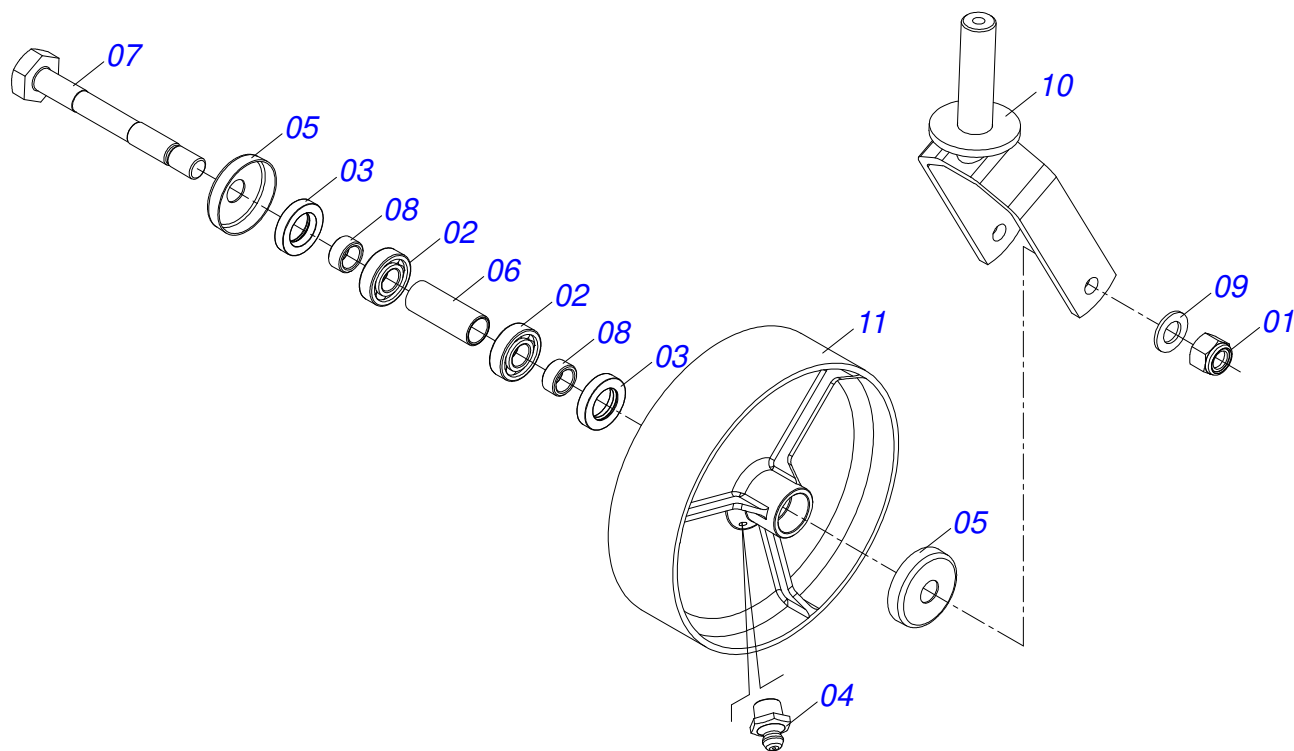
Item	Code	Description	See page	QT
01	0501051715	UNIVERSAL JOINT		01
02	0501050265	UNIVERSAL JOINT		01
03	0501050333	1-40 TERMINAL WITH HITCH		01
04	0502010565	2-40 TERMINAL WITH SH 1.5"/1.5"		01
05	0503012069	ADAPTER FOR BUSHING PROTECT		01
06	0501017429	31" X 1.5" SQUARE SLEEVE		01
07	0503010836	CARDAN CROSSPIECE		02
08	0503011069	0.4" X 2.8" SPRING PIN		01
09	0503010510	0.2" X 2.6" SPRING PIN		01
10	0501051716	UNIVERSAL JOINT WITH SHAFT		01
11	0501050466	UNIVERSAL JOINT WITH CROSSPIECE		01
12	0501043660	FRICITION 90 KG/M	13	01
13	0502010566	3-40 TERMINAL WITH SH 1.2"/1.2"		01
14	0503012070	ADAPTER FOR AXLE PROTECTION		01
15	0501017425	1.2" X 31.5" SQUARE SHAFT		01
16	0503010361	SPRING PIN		01
17	0503010756	0.2" X 2.4" SPRING PIN		01
18	0501051701	UNIVERSAL JOINT WITH SLEEVE/PROT		01
19	0501051702	UNIVERSAL JOINT WITH AXLE/PROT		01
20	0503012077	PROTECTION ASSY		01
21	0503012078	PROTECTION FOR UNIV JOINT AND SLEEV		01
22	0503012079	PROTECTION FOR UNIV JOINT AND AXLE		01
23	0503012023	CHAIN FOR PROTECTION		02
24	0502010563	1-40 STRIATED 1.3/8" TERMINAL		01
25	0521010638	13,70 X 78 HITCH PIN		01
26	0503030518	0.5"X1.0"X 0.1" COMPRESSION SPRING		01
27	0503010838	0.1" X 0.8" SPRING PIN		01



Item	Code	Description	See page	QT
01	0502011555	CENTRAL FLANGE		01
02	0503031474	INNER FRICTION DISC		01
03	0503031478	OUTER FRICTION DISC		01
04	0501110176	FLANGE		01
05	0521013562	REAR FLANGE FOR CLUTCH		01
06	0503030630	1.02"X1.3"X0.2" COMPRESSION SPRING		08
07	0503010752	1/2" X 3.1/2" BOLT		08
08	0503011336	1/2" HEX SELF ADJUSTING NUT		08
09	0503010741	1/2" X 2-3/4" BOLT		02
10	0503010019	1/2" SPRING WASHER		02
11	0503010060	1/2 UNC G.5 ZN HEX NUT		02



Item	Code	Description	See page	QT
01	0521065281	WHEEL SUPPORT		01
02	0503010795	5/8" X 7" BOLT		02
03	0503010027	5/8 SPRING WASHER		02
04	0503010013	5/8 NUT		02
05	0503010962	5/8" X 1-1/4" BOLT		01
06	0511010721	FLAT WASHER		01
07	0511013239	FLAT WASHER		01
08	0503010002	1800 GREASE FITTING		01
09	0501058460	CARRYING WHEELS	15	01
09A	0502012519	350 X 100 WHEEL		01
09B	0501065266	WHELL FORK		01
09C	0501017143	WHEEL AXLE		01
09D	0511014254	DUST CLOAK		02
09E	0503010268	00262-B SEAL		02
09F	0521010487	SPACER WASHER		02
09G	0503010269	6204 BALL BEARING		02
09H	0503010002	1800 GREASE FITTING		01
09I	0521010460	0.9" X 1.1" X 2.9" SLEEVE		01
09J	0503011442	3/4" SPRING WASHER		01
09K	0503010014	3/4" HEX NUT		01



Item	Code	Description	See page	QT
01	0503011075	3/4" UNC NUT		01
02	0503010269	6204 BALL BEARING		02
03	0503010268	00262-B SEAL		02
04	0503010002	1800 GREASE FITTING		01
05	0511014254	DUST CLOAK		02
06	0521010460	0.9" X 1.1" X 2.9" SLEEVE		01
07	0501017143	WHEEL AXLE		01
08	0521010487	SPACER WASHER		02
09	0501010941	FLAT WASHER		01
10	0501065266	WHELL FORK		01
11	0502012519	350 X 100 WHEEL		01

ANNOTATION



A series of horizontal lines for writing, spanning the width of the page.





MARCHESAN

Technical Publications | Elaboration and Revision

ALESSANDRA PATRICIA KAWAHARA CARRILI

www.marchesan.com.br

