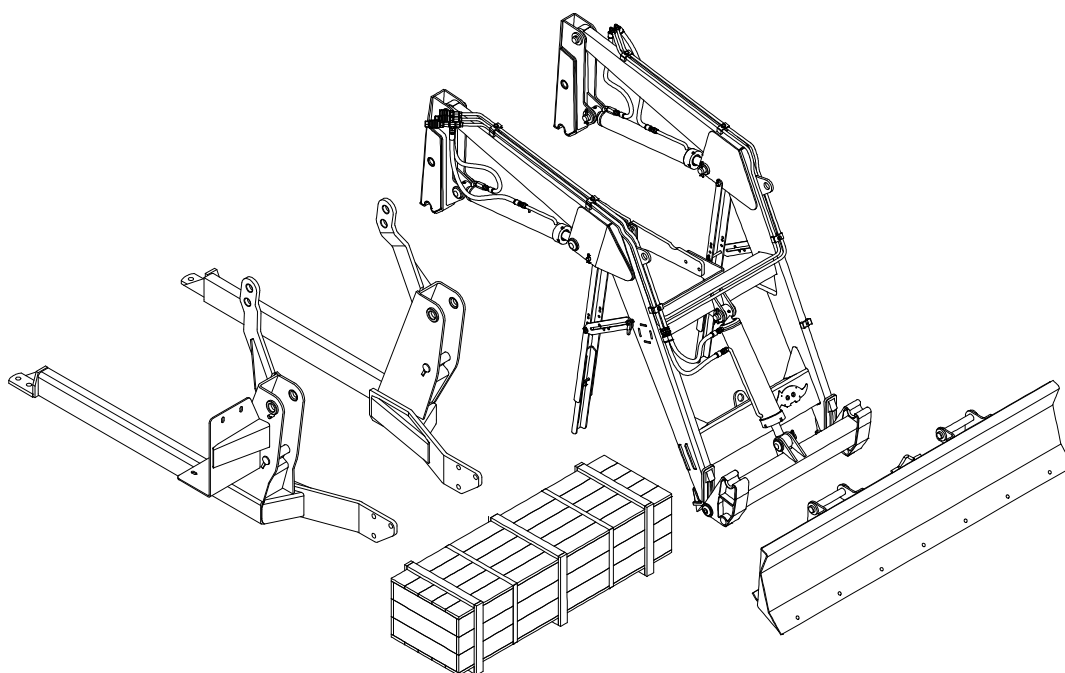


# PARTS CATALOG

## PCA - AGRICULTURAL FRONT LOADER

PCA 600 MF 4283/4290-4 SHT CD  
MPK-PA

Code: 0501092358



Series: S-0313

Rev.: 00

Date Rev.: NOVEMBRO/2018

ORIGINAL PARTS  
TATU



# PRODUCTS

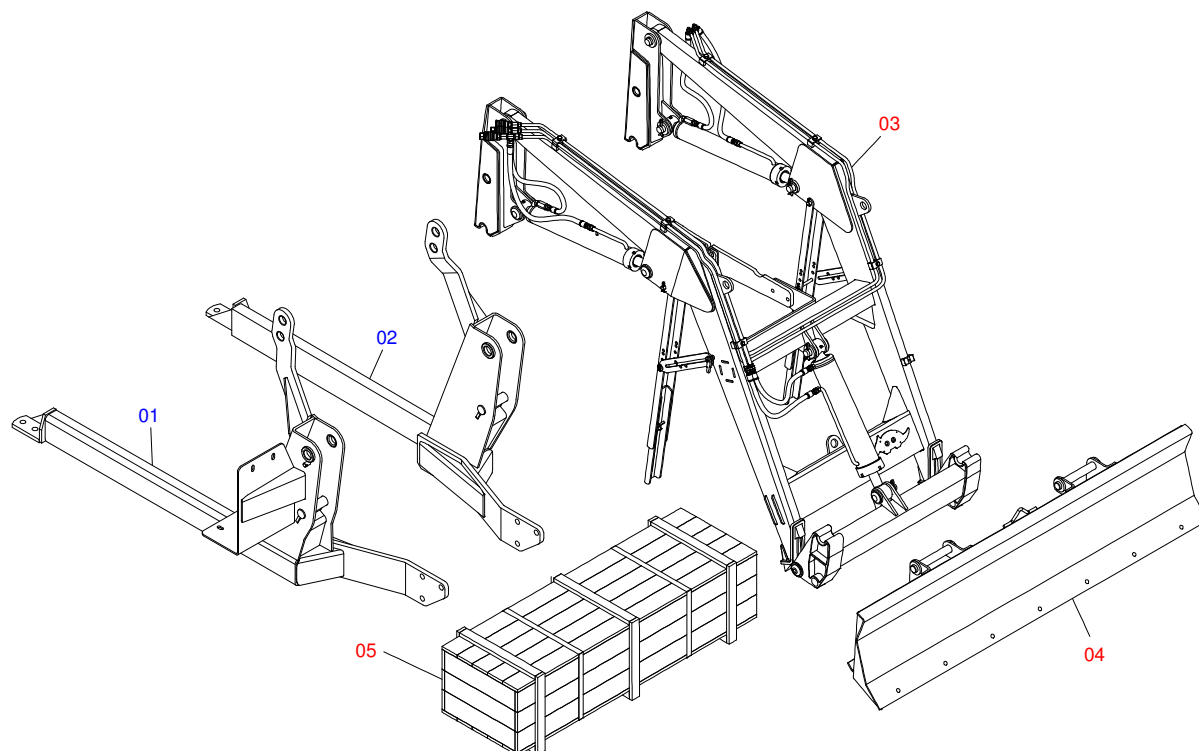
Code	Description
0106111383	PCA 600 MF4283/4290-4 SHT CD MPK-PA

## ATTENTION: **IMPORTANT**

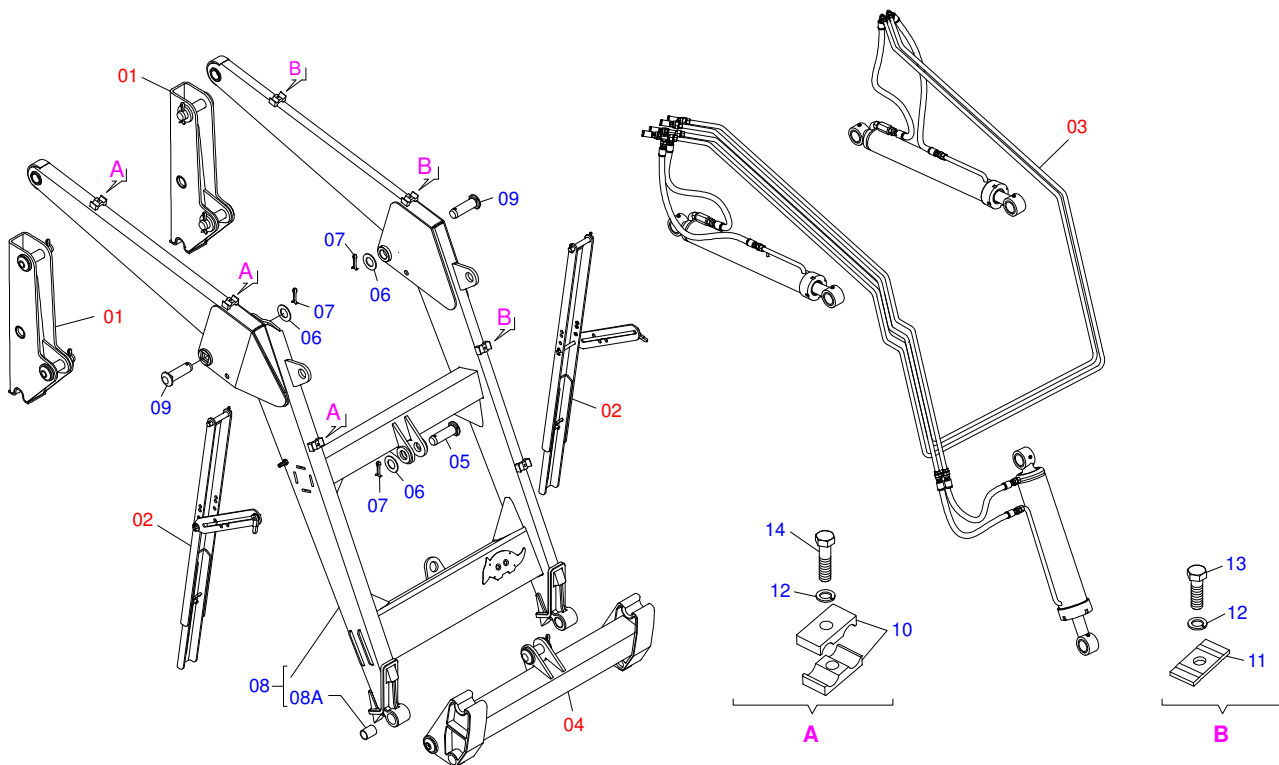
MARCHESAN S/A RESERVES THE RIGHT AT ANY TIME TO MAKE IMPROVEMENTS IN THE DESIGN, MATERIAL OR SPECIFICATIONS OF MACHINERY, EQUIPMENT OR PARTS WITHOUT THEREBY BECOMING LIABLE TO MAKE SIMILAR CHANGES IN MACHINERY, EQUIPMENT OR PARTS PREVIOUSLY SOLD.

# INDEX

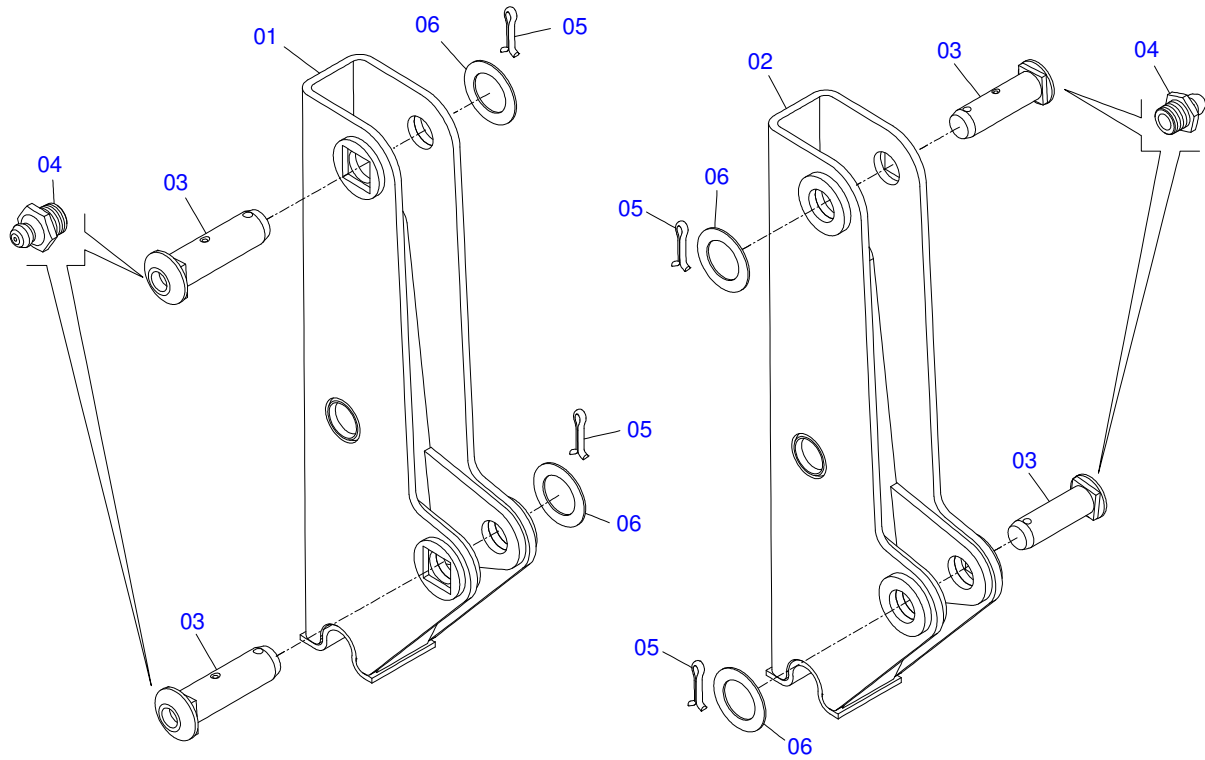
0106111383	PCA 600 MF4283/4290-4 SHT CD MPK-PA	.....	1
0511050044	FULL MOVABLE SUPPORT	.....	2
0909094823	MOBILE TOWER AND COMPONENTS	.....	3
0909092667	ADJUSTABLE REST OF MOVABLE SUPPORT	.....	4
0909094826	ARTICULATOR SUPPORT AND COMPONENTS	.....	5
0909094947	HYDRAULIC CIRCUIT OF THE MOBILE HOLDER	.....	6
0521050762	44,45 X 76,20 X 865 X 555 HYDRAULIC CYLINDER	.....	7
0511057915	44,45 X 101,60 X 702 X 738 HIDRAULIC CYLINDER	.....	8
0501053834	MALE QUICK COUPLING AGRICULTURAL WITH COVER - 1/2 NPT	.....	9
0501053835	FEMALE QUICK COUPLER	.....	10
0501049401	LDA 2200 FULL	.....	11
0511047849	LDA 2200 WITHOUT SUPPORT	.....	12
0511028068	BOX WITH COMPONENTS	.....	13
0909094854	OIL RESERVOIR AND COMPONENTS	.....	14
0501047575	OIL RESERVOIR ASSY	.....	15
0501041108	RETURNING FILTER ASSY	.....	16
0909094860	FRAME AND COMPONENTS	.....	17
0501041849	FULL 1.1/4 NC X 910 ROD	.....	18
0909094951	DOUBLE COMMAND SET 1/2	.....	19
0501059952	DOBLE COMMAND 1/2 HIDROV/DANFOSS ASSY	.....	20
0501047852	COMPLETE CONTROLLER	.....	21
0909094859	PUMP AND COMPLEMENTS	.....	22
0501059935	PUMP WITH SUCTION AND PRESSURE DUCTS	.....	23
0511059116	SET OF HOSES - SHT	.....	24



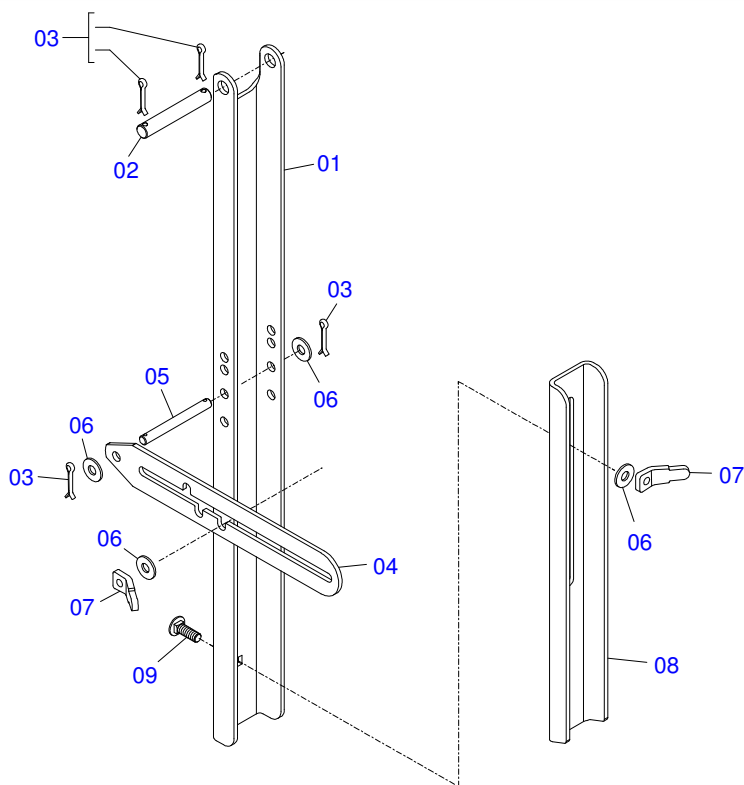
Item	Code	Description	QT
01	0521061688	RIGHT FRAME - PCA SHT MF	01
02	0521061550	LEFT FRAME - PCA SHT MF	01
03	0511050044	FULL MOVABLE SUPPORT	01
04	0511047849	LDA 2200 WITHOUT SUPPORT	01
05	0511028068	BOX WITH COMPONENTS	01



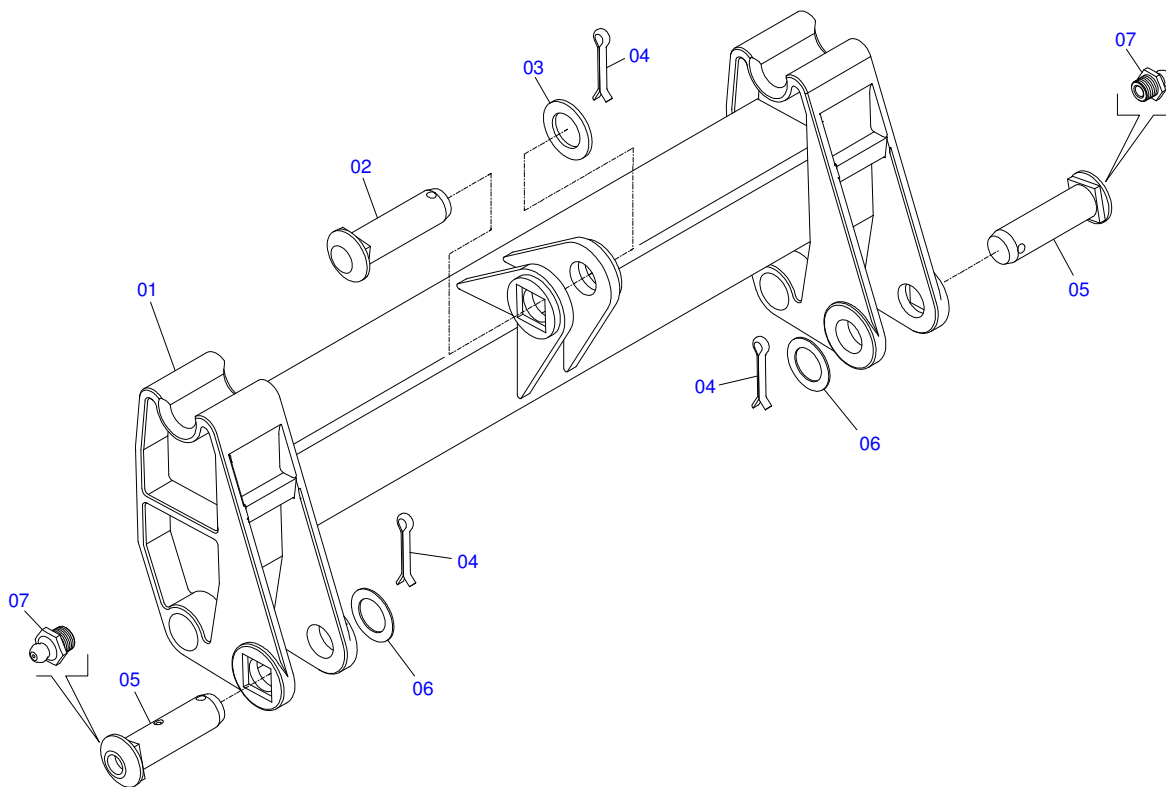
Item	Code	Description	QT
01	0909094823	MOBILE TOWER AND COMPONENTS	01
02	0909092667	ADJUSTABLE REST OF MOVABLE SUPPORT	02
03	0909094947	HYDRAULIC CIRCUIT OF THE MOBILE HOLDER	01
04	0909094826	ARTICULATOR SUPPORT AND COMPONENTS	01
05	0511019521	1.5" X 1.4" PIVOT SHAFT	02
06	0511019685	FLAT WASHER	06
07	0503010534	3/8 X 2-1/2 COTTERPIN	06
08	0521061683	MOBILE SUPPORT - PCA MF-4275/4283	01
08A	0511019740	INTERNAL GLOVE 37.70 X 45.15 X 70	04
09	0521010904	1.5" X 1.4" PIVOT SHAFT	02
10	0502010477	UPPER CLIP	06
11	0531011180	UPPER BODY CLIP	03
12	0503010180	7/16" SPRING WASHER	06
13	0503011102	PARAFUSO 7/16 UNC X 1.1/4 C S G.5	03
14	0503012555	7/16" X 2" BOLT	03



Item	Code	Description	QT
01	0521061673	RIGHT MOBILE TOWER	01
02	0521061674	LEFT MOVEL TOWER	01
03	0511019519	1.5" X 1.4" PIVOT SHAFT	04
04	0503010002	1800 GREASE FITTING	04
05	0503010534	3/8 X 2-1/2 COTTERPIN	04
06	0511819685	FLAT WASHER	04

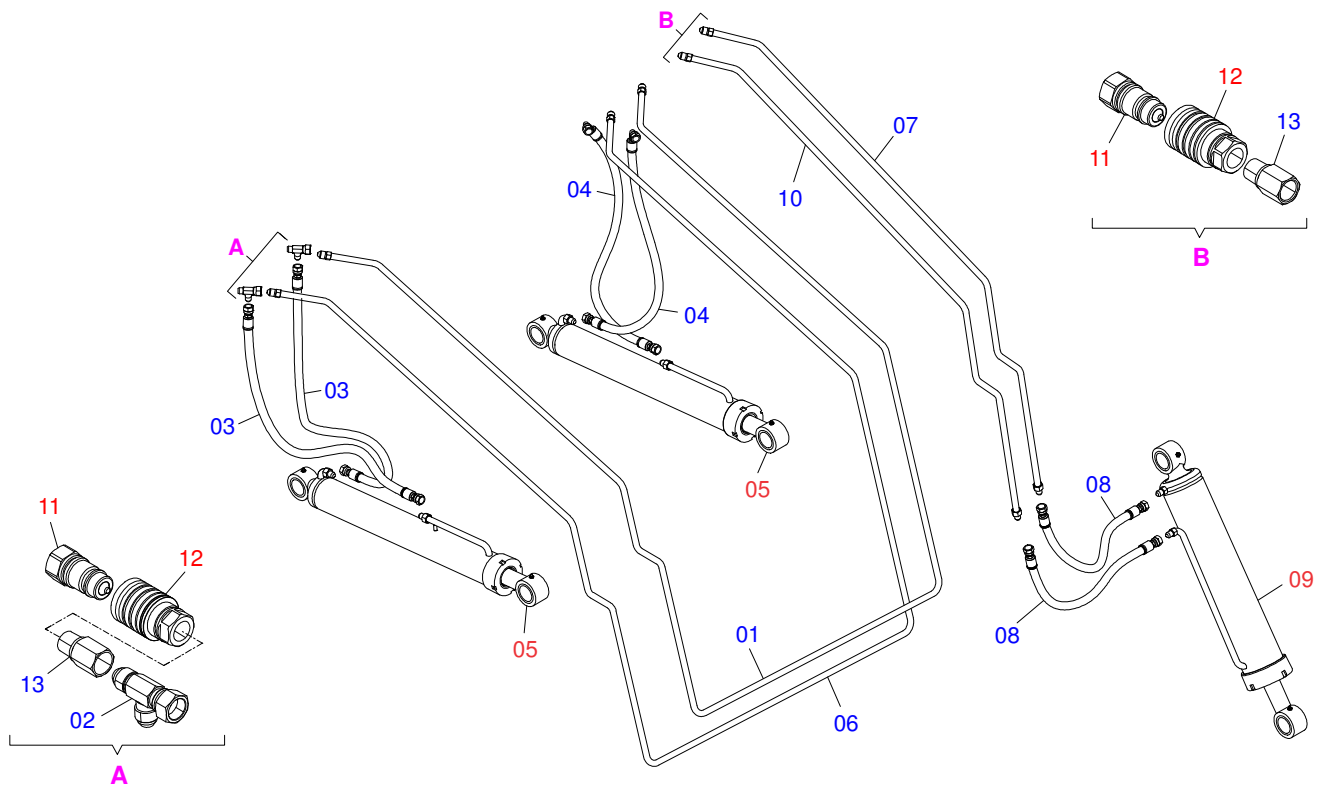


Item	Code	Description	QT
01	0561016401	PLOUGH SUPPORT BODY	02
02	0511013598	3/4" X 4.7" COUPLING SHAFT	02
03	0503010071	3/16" X 1" COTTERPIN	08
04	0511019634	CONTROL LOCK	02
05	0521012823	COUPLING SHAFT	02
06	0511017302	FLAT WASHER	08
07	0561016329	LATCH HOLDER REST PCA	04
08	0561016619	COMPLEMENTON REST	02
09	0503014378	1/2" X 1-1/2" BOLT	02

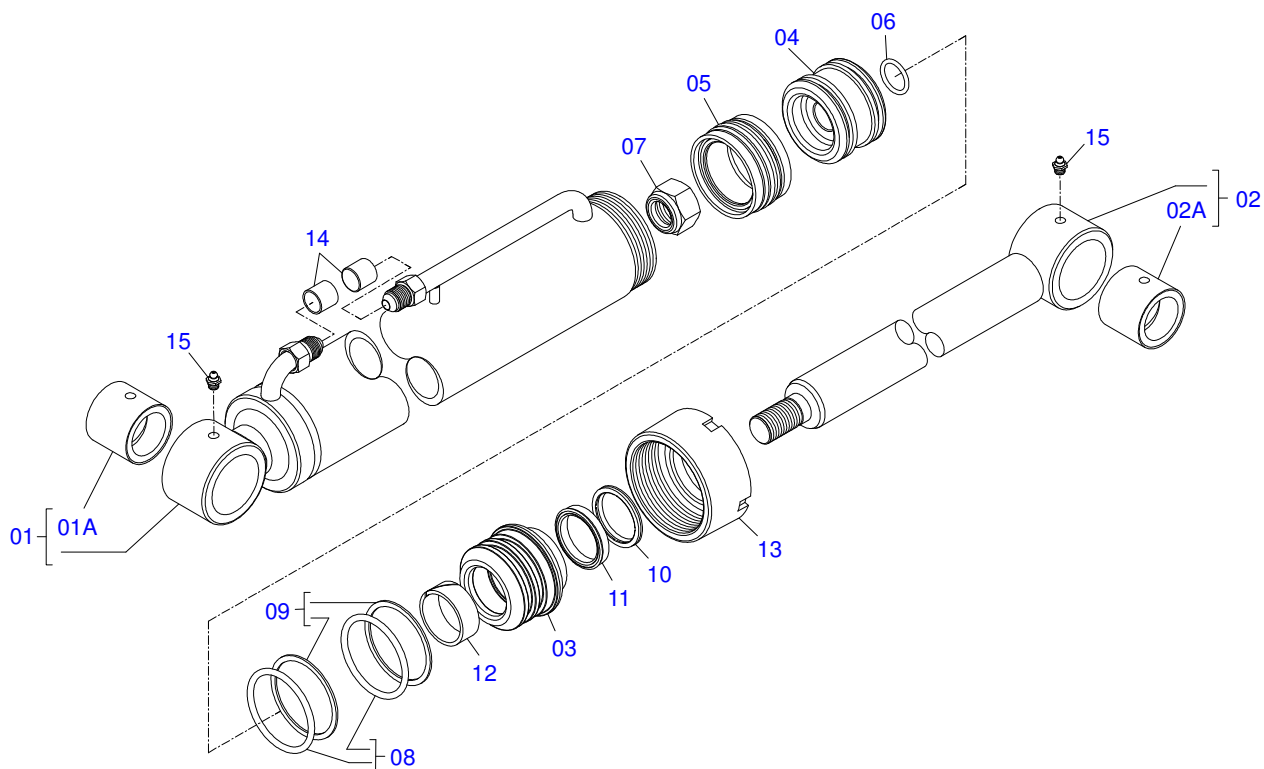


Item	Code	Description	QT
01	0501069934	ARTÍCULOS SOPORTE PCA 600 AX 5.80-4	01
02	0521010904	1.5" X 1.4" PIVOT SHAFT	01
03	0501012916	FLAT WASHER 38,50 X 66 X 4,75 ZN	01
04	0503010534	3/8 X 2-1/2 COTTERPIN	03
05	0511019519	1.5" X 1.4" PIVOT SHAFT	02
06	0511019685	FLAT WASHER	02
07	0503010002	1800 GREASE FITTING	02

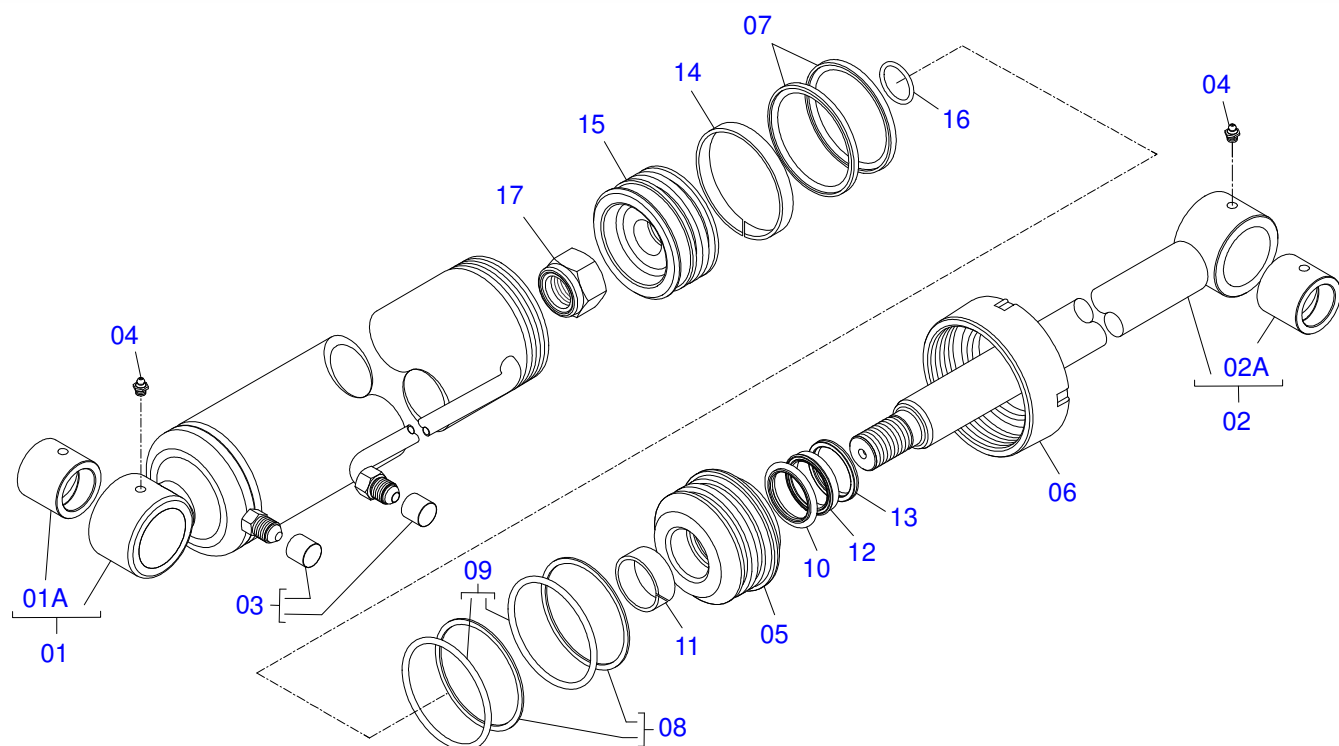




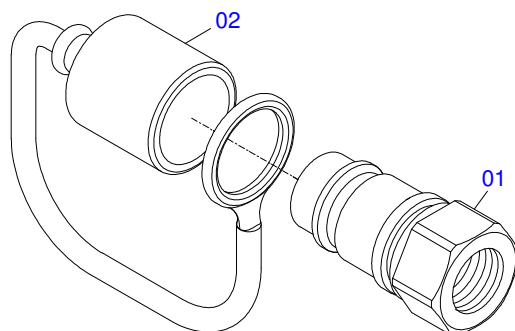
Item	Code	Description	QT
01	0521061694	INTERNAL OIL DISTRIBUTOR - PCA 4275/4283	01
02	0503011968	T ADAPTOR WITH GIRAT	02
03	0501080105	TR-TR HOSE ASSY	02
04	0501080413	3/8" X 27" TR-TC HOSE ASSY	02
05	0521050762	44,45 X 76,20 X 865 X 555 HYDRAULIC CYLINDER	02
06	0521061695	EXTERNAL OIL DISTRIBUTOR - PCA 4275/4283	01
07	0521061696	INTERNAL TOP OIL DISTRIBUTOR - PCA 4275/4283	01
08	0501080635	3/8" X 19" TR-TR HOSE	02
09	0511057915	44,45 X 101,60 X 702 X 738 HIDRAULIC CYLINDER	01
10	0521062948	UPPER OUTER OIL DISTRIBUTOR	01
11	0501053834	MALE QUICK COUPLING AGRICULTURAL WITH	02
12	0501053835	FEMALE QUICK COUPLER	02
13	0511019876	1/2" NIPPLE	04



Item	Code	Description	QT
01	0511071163	76,20 X 740 CYLINDER CASE - PCA 600	01
01A	0521010514	38,1 X 52,9 X 50 SLEEVE INTER	01
02	0521066424	AIR TURNBUCKLE	01
02A	0521010514	38,1 X 52,9 X 50 SLEEVE INTER	01
03	0581010301	RING SUPPORT	01
04	0581010304	PISTON	01
05	0503018136	ZW 007600260 AGEL RING	01
06	0503010042	2-214 N 3006-9B O-RING	01
07	0503010063	1" SELF-ALIGNING NUT	01
08	0503010343	2-334 N 3006-9B O-RING	02
09	0503011059	8-334 BACK-UP RING	02
10	0503010761	D-1750 SCRAPER RING	01
11	0503017937	GASKET	01
12	0503017938	RING GUIDE	01
13	0502011899	MOBILE COVER	01
14	0503030385	CYLINDER PLUG N-002	02
15	0503010002	1800 GREASE FITTING	02

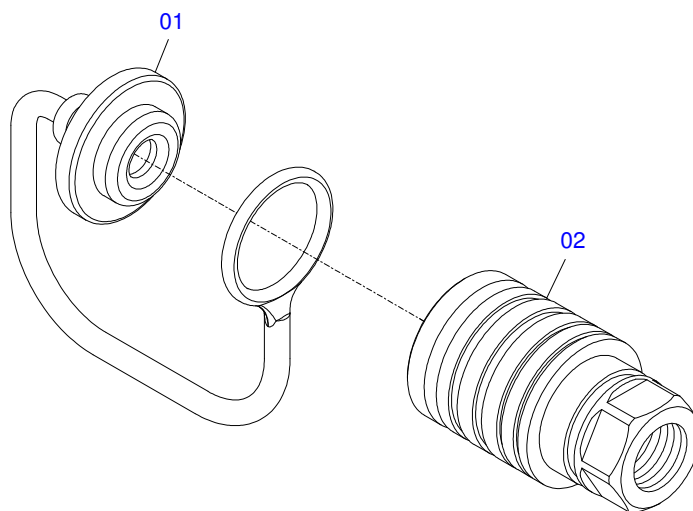


Item	Code	Description	QT
01	0511066339	101,6 X 548 CYLINDER CASE - PCA 600	01
01A	0521010514	38,1 X 52,9 X 50 SLEEVE INTER	01
02	0521066430	44,45 X 630 EXTENDER - PCA 600	01
02A	0521010514	38,1 X 52,9 X 50 SLEEVE INTER	01
03	0503030385	CYLINDER PLUG N-002	02
04	0503010002	1800 GREASE FITTING	02
05	0581010302	RING OF SUPPORT	01
06	0502012822	101,60 MOBILE COVER	01
07	0503018158	OE 101605200211D-BR RING BS	02
08	0503011061	8-342 BACK-UP RING	02
09	0503010338	2-342 N 3006-9B O'RING	02
10	0503017936	RING	01
11	0503017938	RING GUIDE	01
12	0503017937	GASKET	01
13	0503010761	D-1750 SCRAPER RING	01
14	0503010994	W2-4000-500 PK RING G.E	01
15	0581010303	PISTON 4 - PCA 600	01
16	0503018029	2-217 O'RING	01
17	0503010817	1-1/4" SELF-ADJUSTING NUT	01

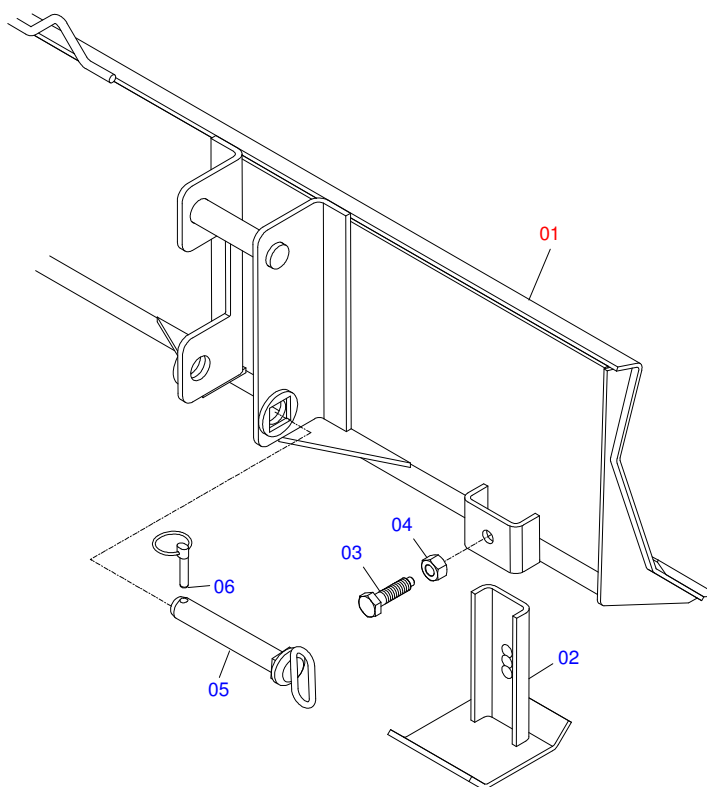


Item	Code	Description	QT
01	0503011627	QUICK CONNECTION (MALE) AGR 1/2 NPT	01
02	0503011882	QUICK CONNECTION COVER	01

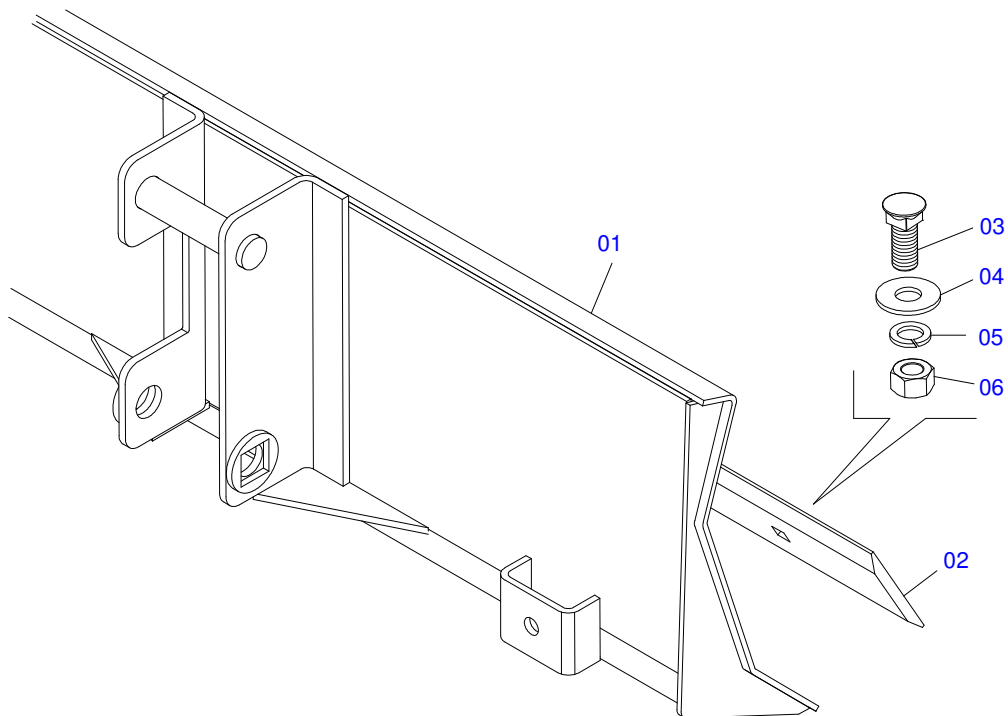
FEMALE QUICK COUPLER



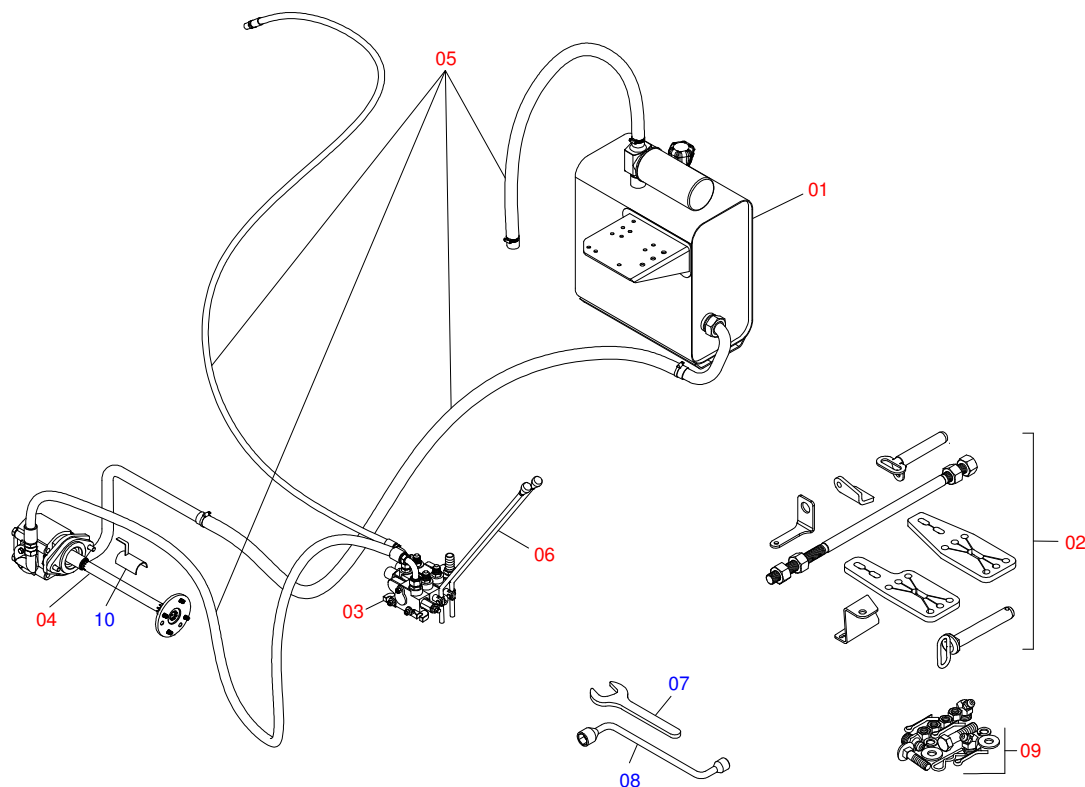
Item	Code	Description	QT
01	0503011883	QUICK CONNECTION COVER	01
02	0503011628	FEMALE QUICK COUPLER	01



Item	Code	Description	QT
01	0511047849	LDA 2200 WITHOUT SUPPORT	01
02	0511064780	SHOE SLIDE LIGHT STABILIZING	02
03	0501018246	3/4" X 3" BOLT	02
04	0503010014	3/4" NUT	02
05	0521067346	38,1 X 285 PIN WITH HANDLE	02
06	0503030430	7/16 X 2" PIN LOCK	02

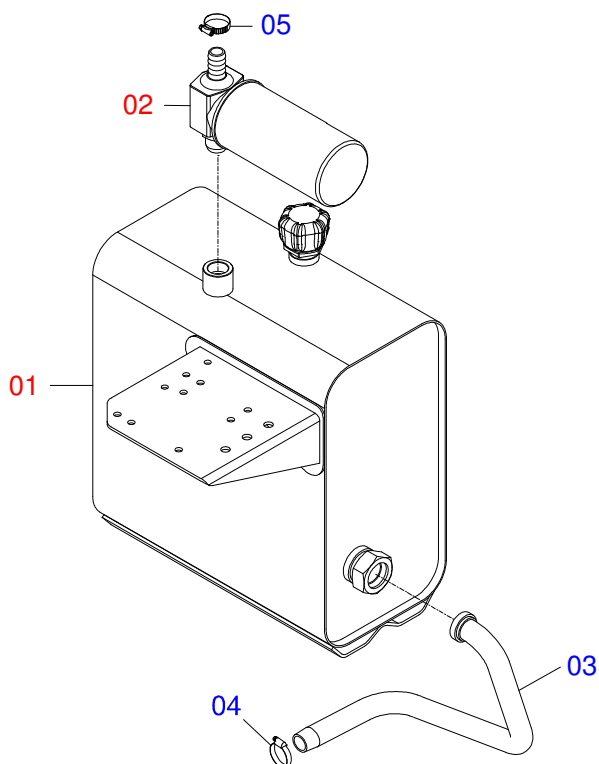


Item	Code	Description	QT
01	0511064165	BLADE FRONT	01
02	0531019518	SCRAPER 2220 X 6 X 1/2	01
03	0501012239	5/8" X 1.3/4" BOLT	07
04	0571010265	FLAT WASHER	07
05	0503011445	SPRING WASHER	07
06	0503010013	5/8" NUT	07



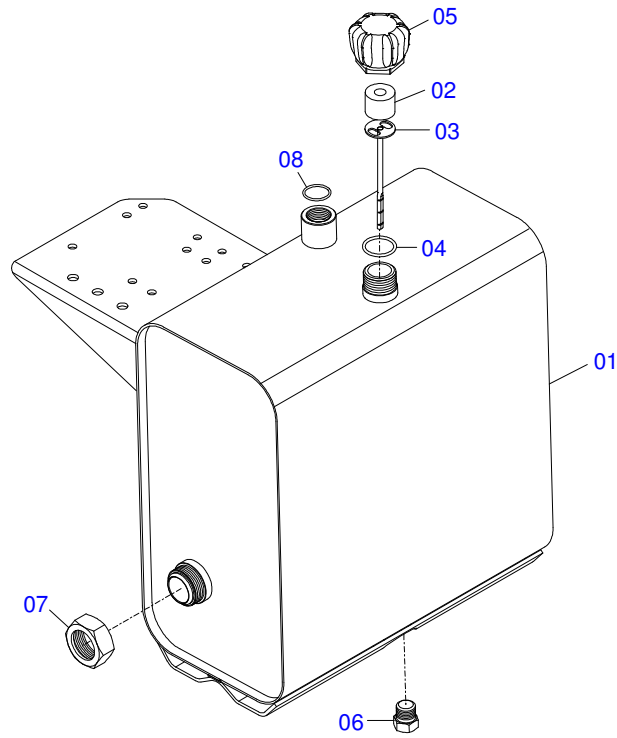
Item	Code	Description	QT
01	0501047575	OIL RESERVOIR ASSY	01
02	0909094860	FRAME AND COMPONENTS	01
03	0501059952	DOBLE COMMAND 1/2 HIDROV/DANFOSS ASSY	01
04	0909094859	PUMP AND COMPLEMENTS	01
05	0511059116	SET OF HOSES - SHT	01
06	0501047852	COMPLETE CONTROLLER	03
07	0511010153	2-5/16" FIXED WRENCH	01
08	0501068213	5/8" WRENCH DOUBLE	01
09	0501039829	PACKAGED PARTS	01
10	0511064563	HOSE PROTECTION	01



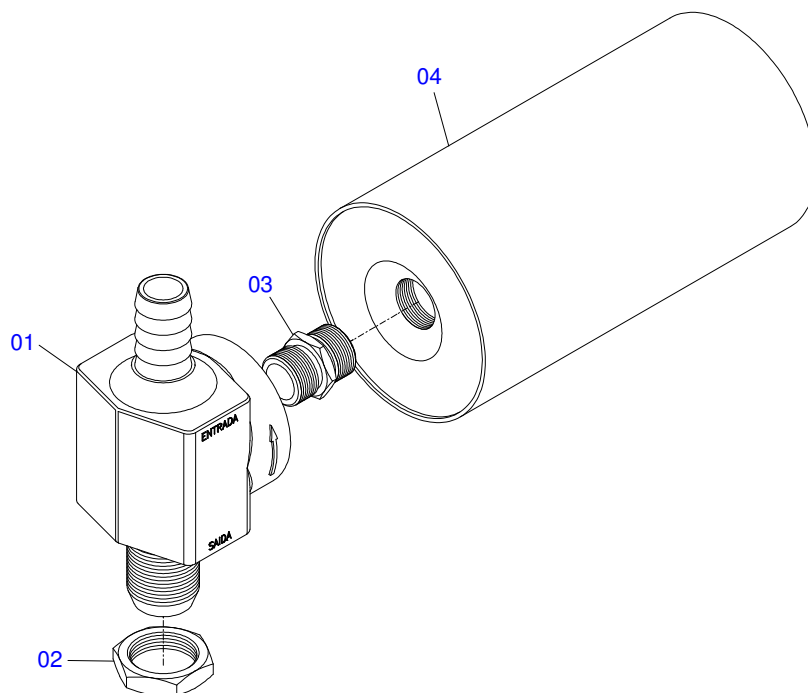


Item	Code	Description	QT
01	0501047575	OIL RESERVOIR ASSY	01
02	0501041108	RETURNING FILTER ASSY	01
03	0521061677	TANK SUCTION DUCT - PCA/PD	01
04	0503010243	CLAMP	01
05	0503010184	CLAMP	01

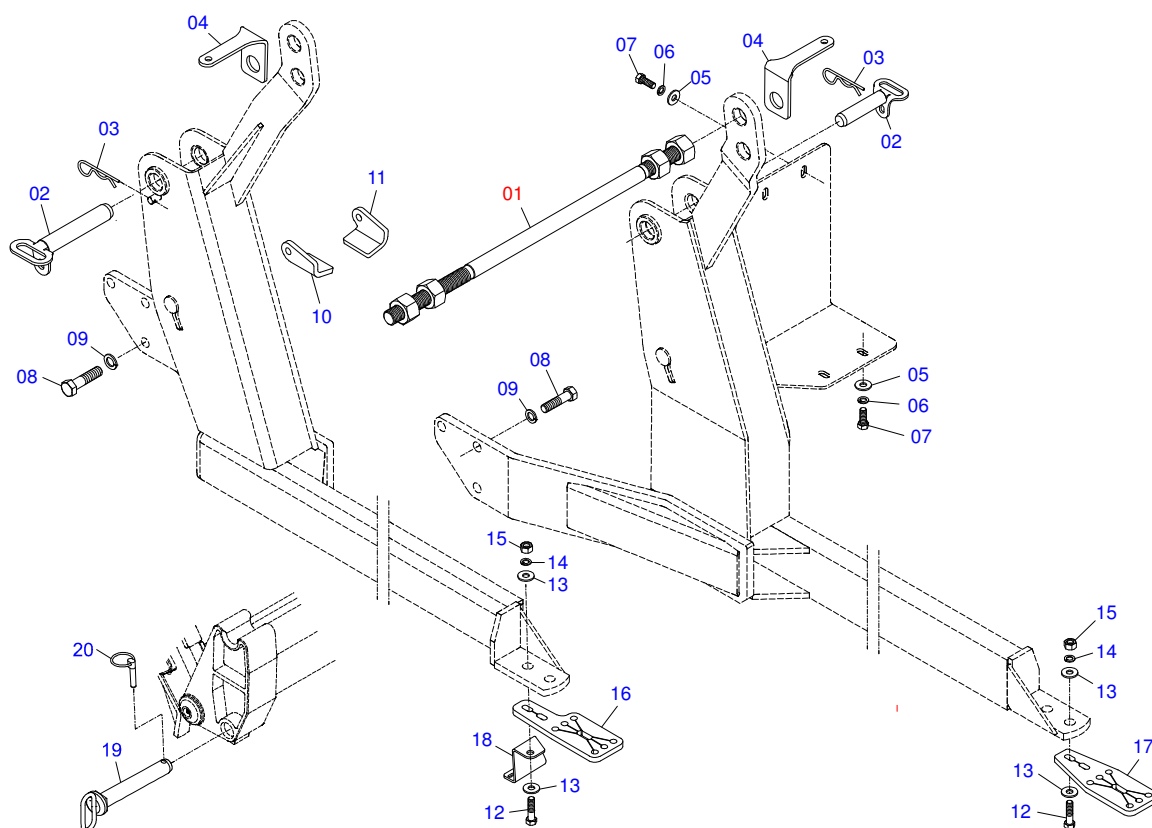
OIL RESERVOIR ASSY



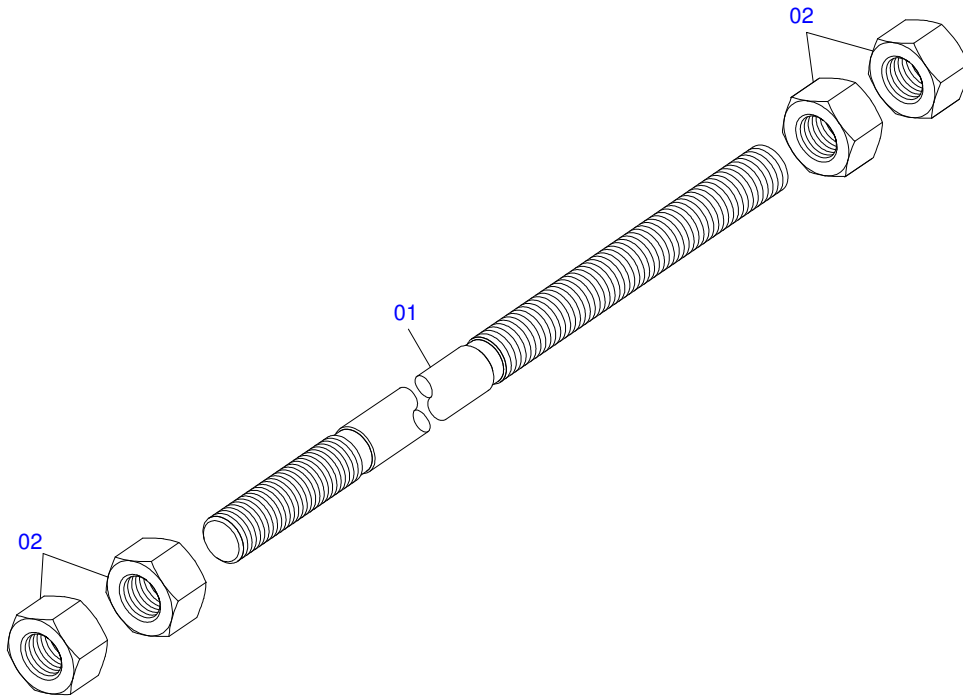
Item	Code	Description	QT
01	0501068685	OIL RESERVOIR	01
02	0503030044	FILTERING ELEMENT	01
03	0501060975	OIL GAGE	01
04	0503010185	2-221 N 3006-9B O-RING	01
05	0502020472	FRONTAL COVER	01
06	0503031604	1/2" BSP PLUG	01
07	0501016309	2" 1X 2.5/16" NUT	01
08	0503010046	2-216 N 3006-9B O-RING	01



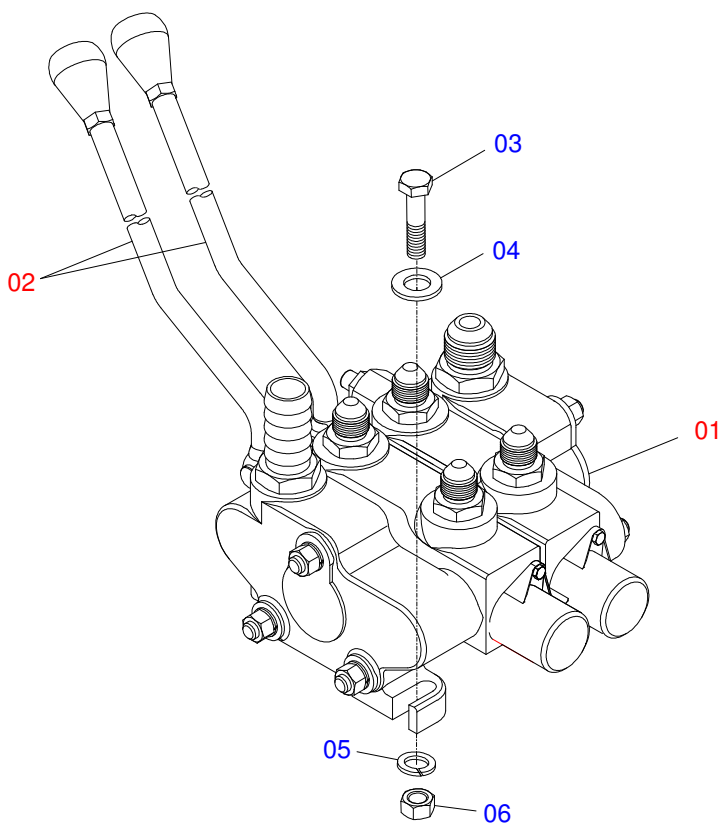
Item	Code	Description	QT
01	0502050002	RETURNING FILTER HEAD	01
02	0501010594	1" NUT	01
03	0501010595	1" NF NIPPLE	01
04	0503010183	RETURNING FILTER	01



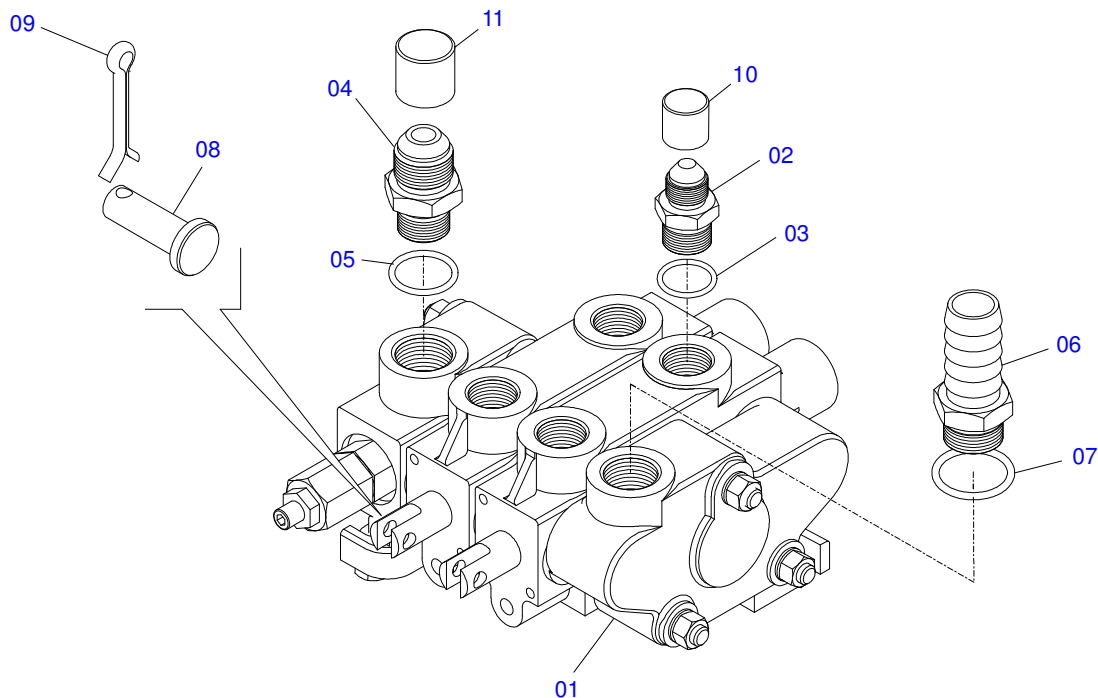
Item	Code	Description	QT
01	0501041849	FULL 1.1/4 NC X 910 ROD	01
02	0521061682	AXLE FIXER	02
03	0503030012	HAIR PIN	02
04	0561010051	HEADLIGHT SUPPORT - PCA MF 291/4 ADV 2008	06
05	0511017302	FLAT WASHER	04
06	0503010019	1/2" SPRING WASHER	04
07	0501010161	1/2" X 1.1/4" BOLT	02
08	0501010098	HEX BOLT 3/4 UNC X 2 C S G.5 ZN	06
09	0503010023	SPRING WASHER	06
10	0561016542	LEFT SCOUT	01
11	0561016541	RIGHT SCOUT	01
12	0501010500	3/4"X3"BOLT	04
13	0501010322	FLAT WASHER	08
14	0503010023	SPRING WASHER	04
15	0503010014	3/4" NUT	04
16	0571013046	BRACKET	01
17	0561016408	FRAME BRACKET	01
18	0561016418	SUPPORT TANK OIL	01
19	0521063680	HITCH PIN (185) SAB PCA800	02
20	0503030430	7/16 X 2" PIN LOCK	02



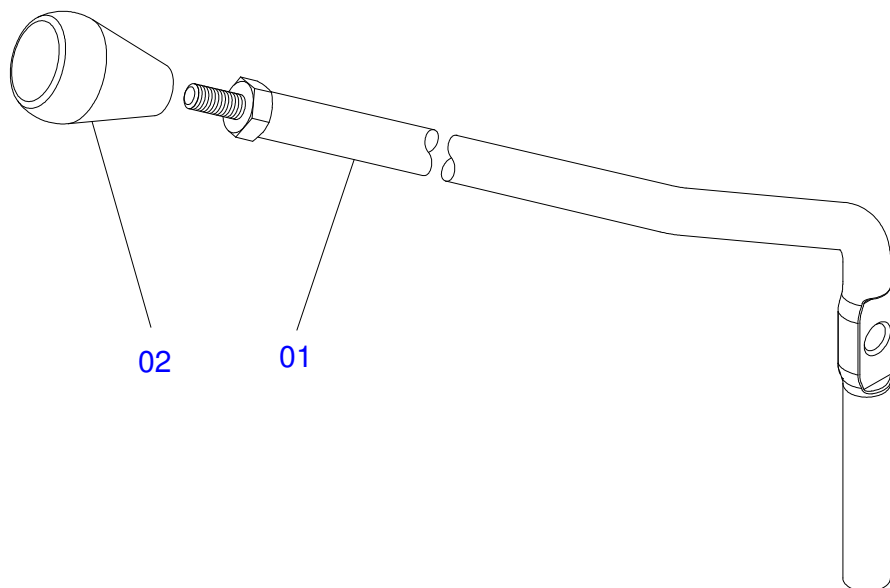
Item	Code	Description	QT
01	0501014914	1.1/4" X 910 ROD	01
02	0501010087	1.1/4" NUT	04



Item	Code	Description	QT
01	0501059952	DOBLE COMMAND 1/2 HIDROV/DANFOSS ASSY	01
02	0501047852	COMPLETE CONTROLLER	03
03	0501010080	3/8" BOLT	03
04	0501010984	FLAT WASHER	03
05	0503010025	3/8 SPRING WASHER	03
06	0503010026	3/8" NUT	03

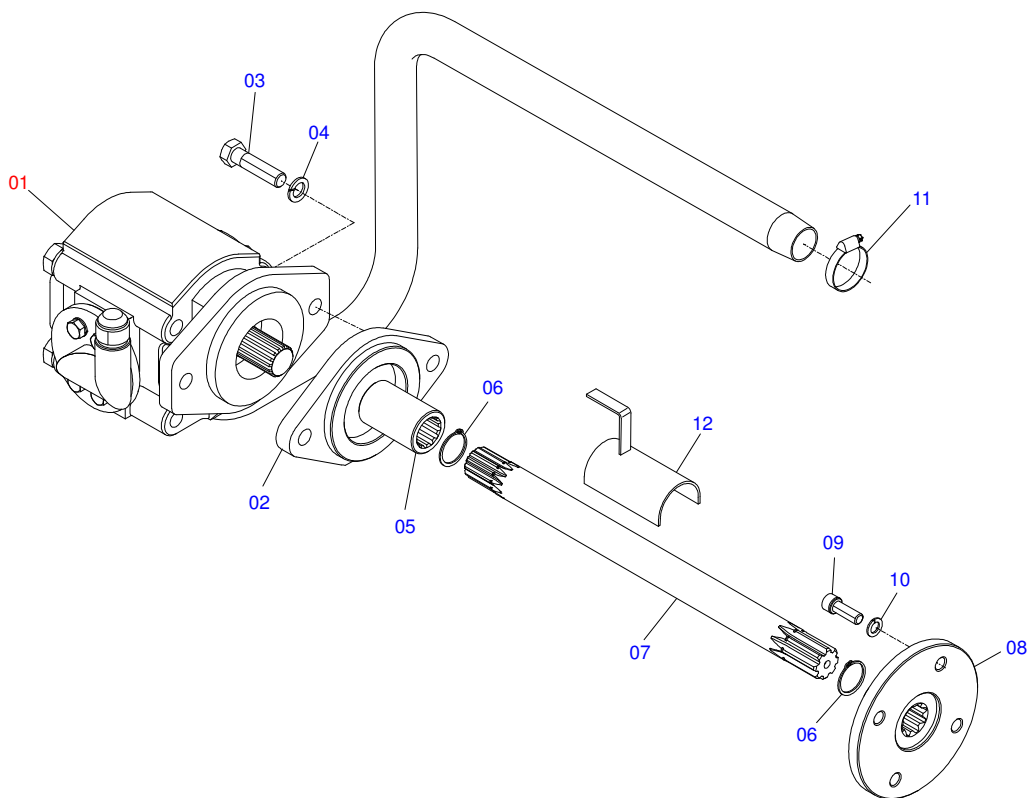


Item	Code	Description	QT
01	0503060016	1/2"DOUBLE COMMAND	01
02	0501010590	7/8" REDUCTION NIPPLE	04
03	0503010045	2-116 N 3006-9B O'RING	04
04	0501010589	R. 1.1/16UN SEXT 1.1/4 X 52 NIPPLE	01
05	0503011109	2-119 N 3006-9B O'RING	01
06	0501010591	HOSE NIPPLE	01
07	0503011109	2-119 N 3006-9B O'RING	01
08	0521010533	0.3" X 1" COUPLING SHAFT	02
09	0503010140	1/8" X 3/4" COTTERPIN	02
10	0503030387	PLUG	04
11	0503030388	PLUG N-005	01

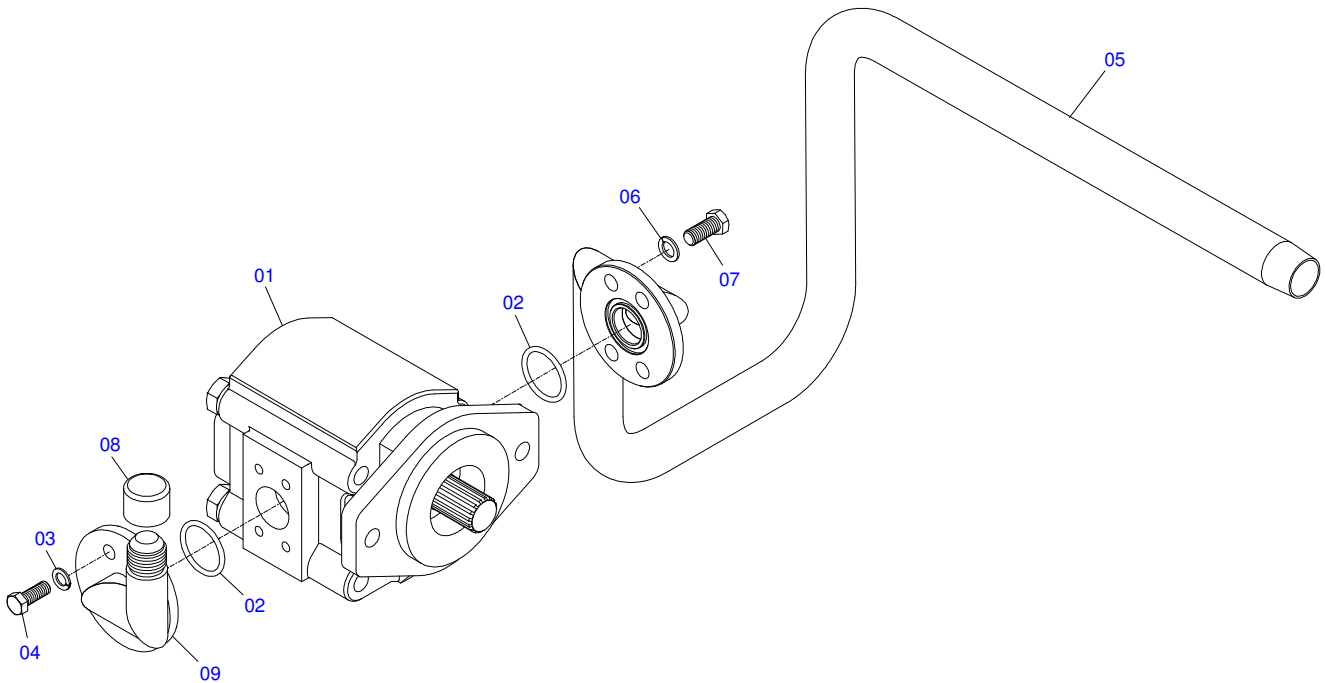


Item	Code	Description	QT
01	0501069069	CONTROL VALVE (V 985-4/AX 4.75)	01
02	0503030878	LEVER CRANK	01

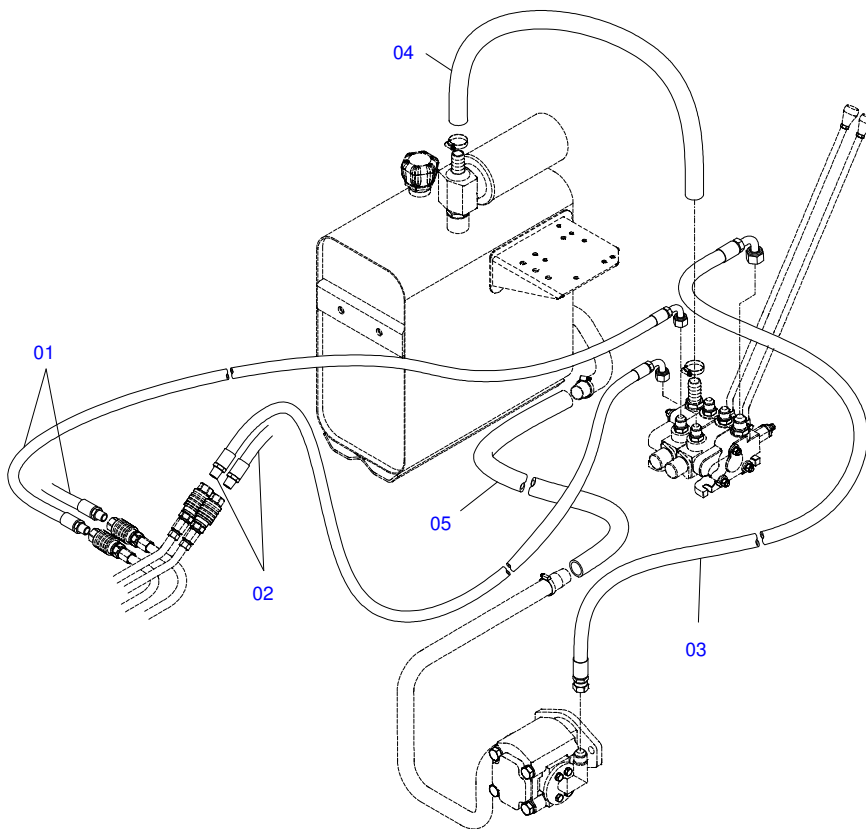




Item	Code	Description	QT
01	0501059935	PUMP WITH SUCTION AND PRESSURE DUCTS	01
02	0521012242	SUPPORT ADAPTER	01
03	0503011172	1/2" X 2-1/2" BOLT	02
04	0503010019	1/2" SPRING WASHER	02
05	0503030838	1-1/8" X 2.4" SLEEVE	01
06	0503010174	501028 CLAMPING RING (FOR AXLE)	01
07	0501057540	AXIS 385 X 1.1/8 EST1.1/8-30G WITH RING	01
08	0561016816	120 X 50 ESTR 1.1/8" - COUPLING FLANGE	01
09	0503010119	7/16" X 1-1/4" BOLT	04
10	0503010025	3/8 SPRING WASHER	04
11	0503010243	CLAMP	01
12	0511064563	HOSE PROTECTION	01



Item	Code	Description	QT
01	0503061770	PUMP WITH TUBE	01
02	0503010173	2-220 N 3006-9B O'RING	02
03	0503010025	3/8 SPRING WASHER	04
04	0503011087	3/8" X 1" BOLT	04
05	0521061552	PUMP SUCTION DUCT - MF 4292/4283-4	01
06	0503010180	7/16" SPRING WASHER	04
07	0503010355	7/16" X 1" BOLT	04
08	0503030388	PLUG N-005	01
09	0501069661	PUMP PRESSURE TUBE	01



Item	Code	Description	QT
01	0501080376	1/2 X 1300 HOSE TC-TM	02
02	0501080796	1/2" X 1400 TC-TM HOSE	02
03	0501080638	3/4 X 3200 TR-TC HOSE	01
04	0501013378	1' X 25.59" HOSE CLAMP	01
05	0511010498	HOSE CLAMP 1.1/4" X 72.83"	01





**MARCHESAN IMPLEMENTOS E MÁQUINAS AGRÍCOLAS TATU S.A.**

AV. Marchesan, 1979 - Post office box, 131 - CEP 15994-900 - Matão - SP - Brazil

Phone +55 16.3382-8282

(FAX Parts) + 55 16.3382. 8297 - (Export) + 55 16.3382.1003

e.mail: [tatu@marchesan.com.br](mailto:tatu@marchesan.com.br) [www.marchesan.com.br](http://www.marchesan.com.br)

**Technical Publications: Elaboration**

JOÃO VIRGINIO ROCHA

**Technical Publications: Revision**

JOÃO VIRGINIO ROCHA

*Contact Catálogo:*

*E-mail = [jgaspari@marchesan.com.br](mailto:jgaspari@marchesan.com.br)*

**ORIGINAL PARTS  
TATU**

