

# PARTS CATALOGUE

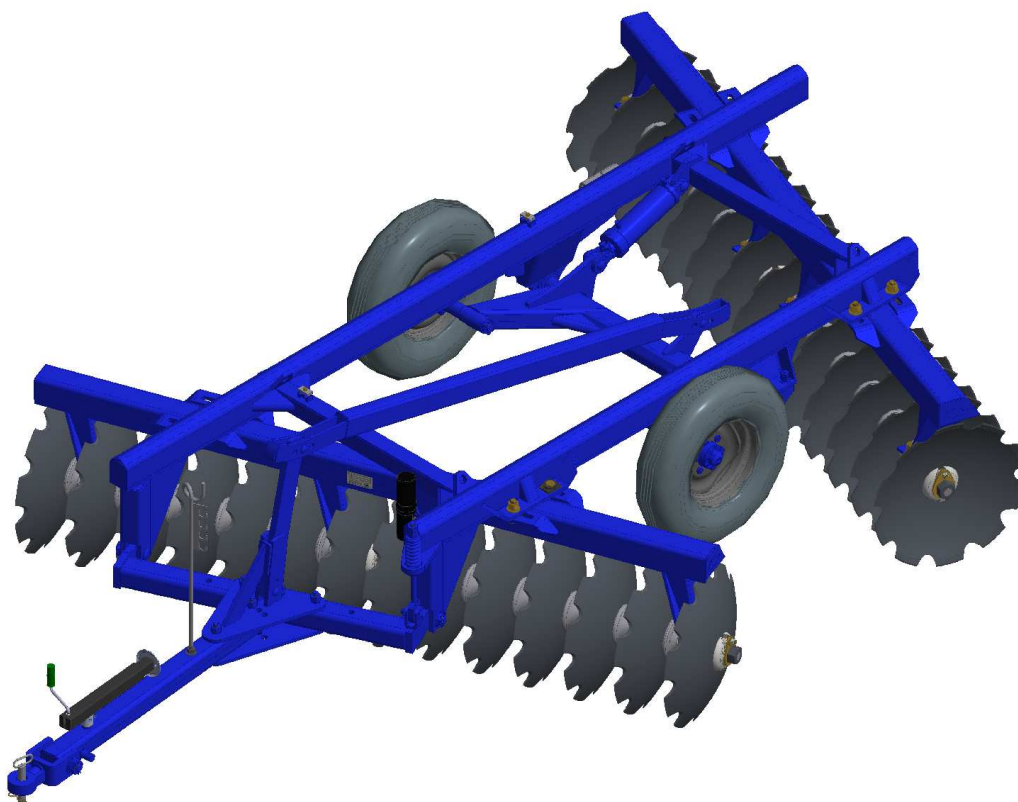
## OFFSET DISK HARROW

**Code:**

0501092274

**Product:**

ATCRL 6009 - 14/18/20D - AXIS 1.5/8" - COSTA RICA

**Series:**

S-1091

**Revision:**

00

**Date Revision:**

JULHO/2018





# PRODUCTS

Code	Description
0102440352	ATCRL 6009 14 S/CH/DC C.RICA S-1091
0102440238	ATCRL 6009 18 X 24 X 6,00 DM C.RICA
0102440239	ATCRL 6009 20 X 24 X 6,00 DM C.RICA

## ATTENTION: IMPORTANT

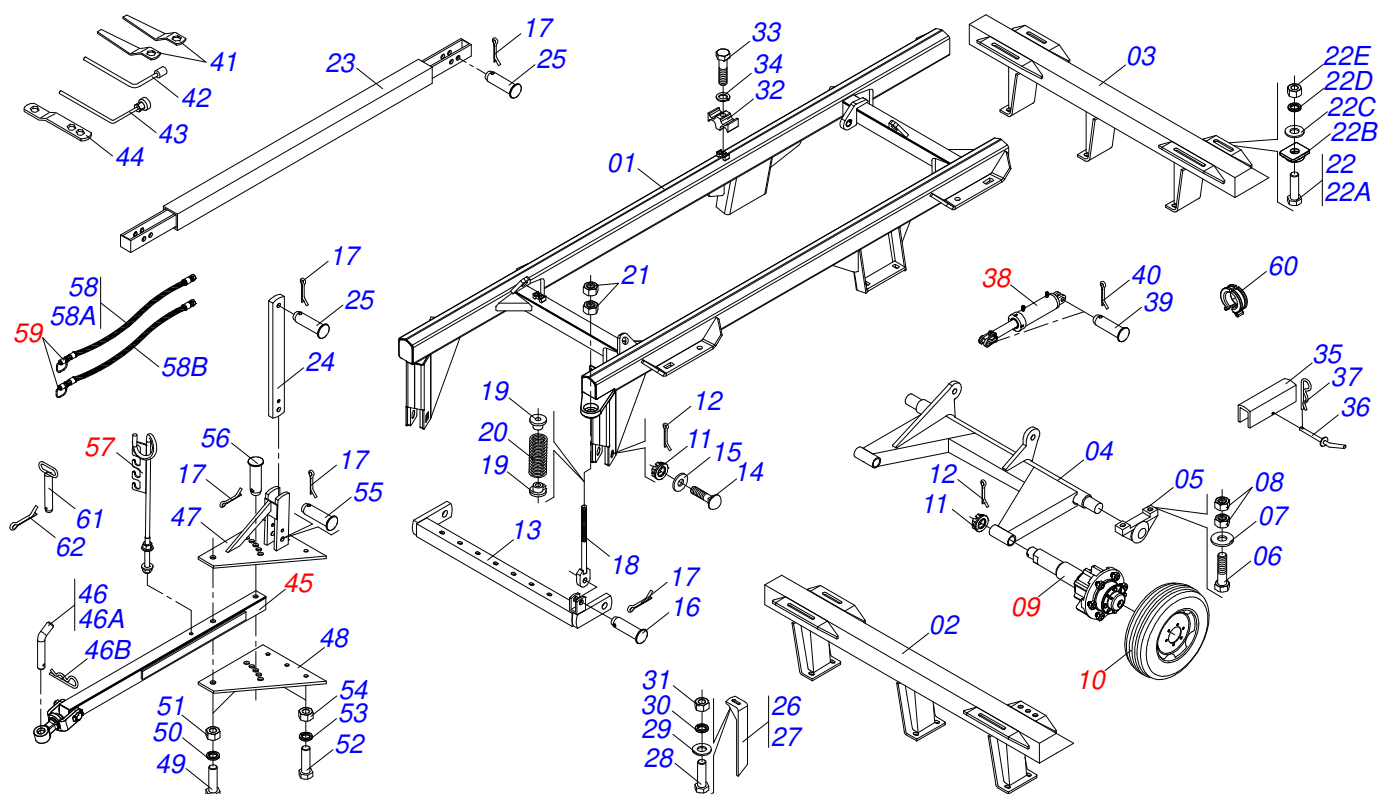
Marchesan S.A. reserves the right to improve and / or modify the technical features of its products, without obligation to do the same with those products already sold and without prior knowledge of the dealer or the consumer.



# INDEX

0909091174	14/18/20D - COSTA RICA - FRAME ASSY	.....	1
0501051634	TSTUB SHAFT & HUB ASSY	.....	2
0501051142	CARRYING WHEEL HUB	.....	3
0503060094	WHEEL AND TIRE ASSY	.....	4
0503060091	L29.5"X0.63"-10L WHEEL AND	.....	5
0511058298	HYDRAULIC CYLINDER	.....	6
0511059180	HYDRAULIC CYLINDER	.....	7
0501041096	DRAWBAR ASSY	.....	8
0501040257	3/4 X 1200 HOSE HOLDER A	.....	9
0501053834	MALE QUICK COUPLER WITH CAP - 1/2 NPT	.....	10
0909092641	AXIS 1.5/8" - COSTA RICA - DISC GANG SECTION	.....	11
0501046923	9"X 1-5/8" OIL BATH BEARING	.....	12





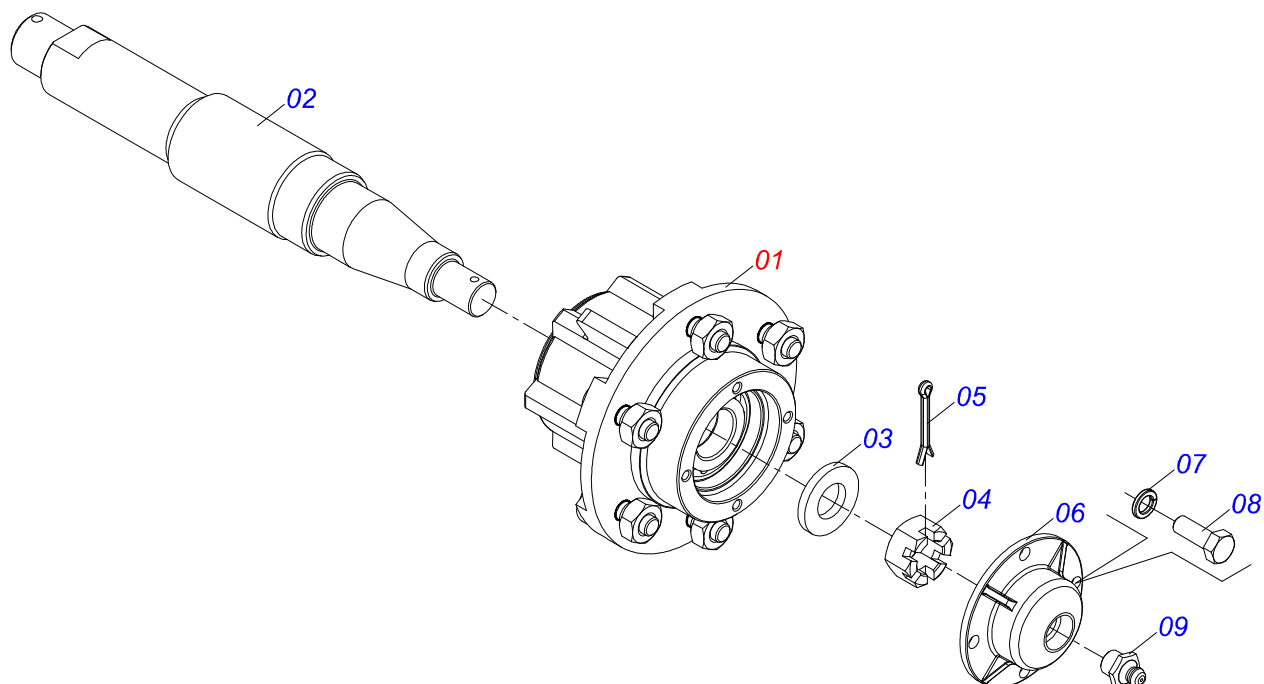
Item	Code	Description	See page	14	18	20
01	0511066918	ATCR-L 14 E 16 CENTER FRAME		01	00	00
01.	0501065311	ATCRL 18A25 CENTER FRAMEAM		00	01	01
02	0501069735	FRONT FRAME		00	01	00
02.	0501069737	FRONT FRAME		00	00	01
03	0501069736	REAR FRAME		00	01	00
03.	0501069738	REAR FRAME		00	00	01
04	0501066950	CARRYING-WHEELS		01	00	00
04.	0501065518	CARRYING-WHEELS		00	01	01
05	0501110856	ARTICULACION BEARING		02	02	02
06	0503010797	3/4" X 4" BOLT		04	04	04
07	0501010322	FLAT WASHER		04	04	04
08	0503010014	3/4" NUT		04	04	04
09	0501051634	TSTUB SHAFT & HUB ASSY	2	02	02	02
10	0503060094	WHEEL AND TIRE ASSY	4	02	00	00
10.	0503060091	L29.5"X0.63"-10L WHEEL AND	5	00	02	02
11	0501811301	CASTLE NUT		04	04	04
12	0503010010	1/4" X 2.1/2" COTTERPIN		04	04	04
13	0501060370	OFFSET BAR		01	00	00
13.	0501063260	OFFSET BAR		00	01	01
14	0521017538	11-1/2" X 5" COUPLING SHAFT		02	02	02
15	0511019880	FLAT WASHER		02	02	02
16	0521010592	1.1" X 3.1" COUPLING SHAFT		02	02	02
17	0503010571	1/4" X 1.1/2 COTTERPIN		05	05	05
18	0501064698	SPRING ROD		01	01	01
19	0502020392	SPRING SUPPORT		02	02	02
20	0503030441	12.7" X 5.7" X 0.5"SPRING		01	01	01
21	0501010059	1.5/8 NUT		04	04	04
22	0501040877	C1" X 3-1/4" ASSY BOLT		08	08	08
22A	0501010171	PARAFUSO 1 UNC X 3.1/2 C S G.5		08	08	08
22B	0502012861	1" SQUARE WASHER		08	08	08
22C	0501010065	1" SPRING WASHER		08	08	08





Item	Code	Description	See page	14	18	20
22D	0503010012	1" SPRING WASHER		08	08	08
22E	0501010059	1.5/8 NUT		08	08	08
23	0511066932	CSTABILIZER BARCOTTERPIN		01	01	01
24	0511012972	TSTABILIZER BAR TOWER		01	01	01
25	0521810576	COUPLING SHAFT		02	02	02
26	0501064168	REAR SCRAPER		04	05	05
26.	0501066449	CLEANER FRONT		02	03	04
27	0501064167	REAR SCRAPER		04	05	05
27.	0501066450	CLEANER REAR		02	03	04
28	0503011082	C1/2" X 1.3/4" SCREW		24	20	20
29	0511017302	FLAT WASHER		24	20	20
30	0503010019	1/2" SPRING WASHER		24	20	20
31	0503010060	1/2" NUT		24	20	20
32	0502012702	BODY SUPPORT CLAMP		02	02	02
33	0503012555	SCREW 7/16 UNC X 2 CS RT G.7 ZN		02	02	02
34	0503010180	7/16" SPRING WASHER		02	02	02
35	0511010420	8.5" X 1.8" TRANSPORT LOCK		01	00	00
35.	0511010839	TRANSPORT LOCK 7.9" X 2.1" X 0.4"		00	01	01
36	0501068994	0.3" X 3.1" LOCK PIN		01	01	01
37	0503030168	HAIR PIN		01	01	01
38	0511058298	HYDRAULIC CYLINDER	6	01	00	00
38.	0511059180	HYDRAULIC CYLINDER	7	00	01	01
39	0521012538	1.2" X 3.5" COUPLING SHAFT		02	02	02
40	0503010523	1/4" X 2" COTTERPIN		02	02	02
41	0501011432	1-1/2" AND 1-5/8 GANG BOLT WRENCH		02	02	00
41.	0501011431	1-3/4" GANG BOLT WRENCH		00	00	02
42	0501068273	5/8" WRENCH		01	01	00
42.	0503016140	3/4" WRENCH CABLE CYLINDRICAL		00	00	01
43	0501061617	1" GANG BOLT WRENCH		01	01	01
44	0511018451	5/8" X 3/4" X 1" UNIVERSAL		01	01	01
45	0501041096	DRAWBAR ASSY	8	01	01	01
46	0501040343	DRAWBOLT ASSY		01	00	00
46A	0521010453	GCOUPLING SHAFT		01	00	00
46B	0503031035	HAIR PIN		01	00	00
47	0501066099	UPPER PLATE WITH SUPPORT		01	01	01
48	0501010241	UPPER /LOWER PLATE		01	01	01
49	0501010060	1" X 6-1/2" BOLT		02	02	02
50	0503011438	SPRING WASHER		02	02	02
51	0501010059	1.5/8 NUT		02	02	02
52	0503011198	C3/4" X 6" SCREW		03	03	03
53	0503011442	3/4" SPRING WASHER		03	03	03
54	0503010014	3/4" NUT		03	03	03
55	0521010575	C0.9" X 3.3" COUPLING SHAFT		01	01	01
56	0521010584	C0.9" X 5.7" COUPLING SHAFT		01	01	01
57	0501040257	3/4 X 1200 HOSE HOLDER A	9	01	01	01
58	0503011360	HOSE KIT		01	01	01
58A	0501080443	3/8" X 236" TR-TM HOSE		01	01	01
58B	0501080421	3/8" X 230" TR-TM HOSE ASS		01	01	01
59	0501053834	MALE QUICK COUPLER WITH CAP - 1/2 NPT	10	02	02	02
60	0501047895	ROD STOP		04	00	00
61	0501069080	COUPLING SHAFT		00	01	01
62	0503010534	3/8 X 2-1/2 COTTERPIN		00	01	01



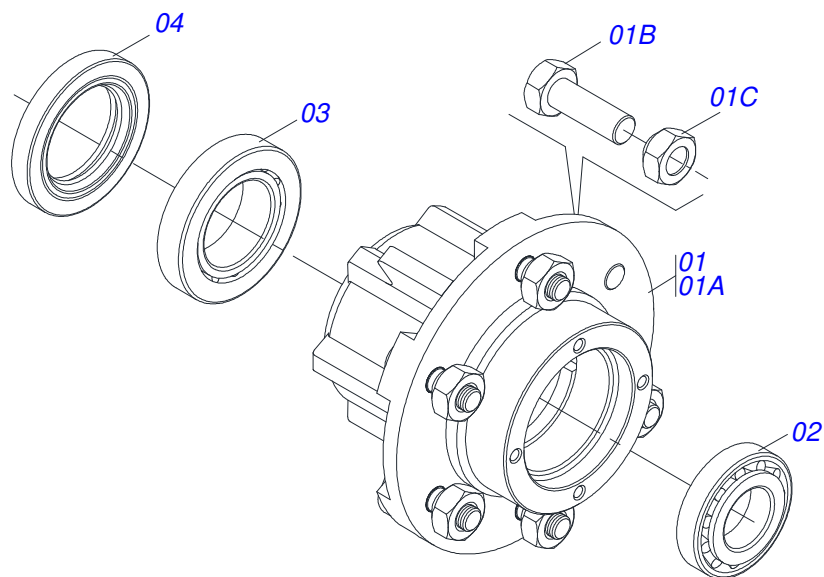


Item	Code	Description	See page	QT
01	0501051142	CARRYING WHEEL HUB	3	01
02	0521010821	2.5" X 16.5" AXLE		01
03	0501016545	FLAT WASHER		01
04	0503030009	1" CASTLE NUT		01
05	0503010018	5/32 X 1-1/2 COTTERPIN		01
06	0502020591	PROTECCION COVER		01
07	0503011444	SPRING WASHER		04
08	0503010358	5/16" X 5/8" BOLT		04
09	0503010002	1800 GREASE FITTING		01



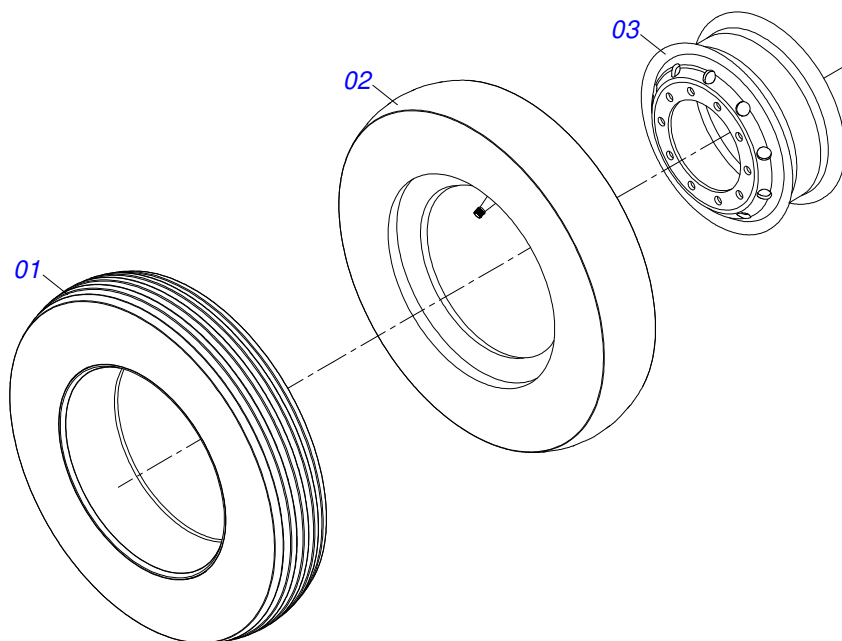
CARRYING WHEEL HUB

0501051142



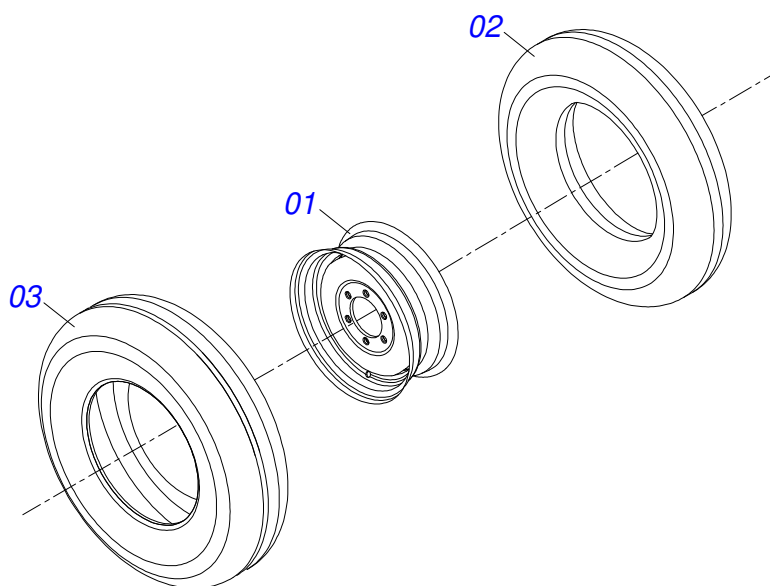
Item	Code	Description	See page	QT
01	0501110728	WHEEL HUB		01
01A	0502011121	CARRYING WHEEL HUB		01
01B	0501010127	9/16" X 1-7/8" LUG BOLT		06
01C	0503010035	9/16" CONIC NUT		06
02	0503010037	30207 ROLLER BEARING		01
03	0503010006	32210 ROLLER BEARING		01
04	0503012928	SEAL		01





Item	Code	Description	See page	QT
01	0503010065	CANVAS TIRE		01
02	0503010068	6.00 X 16 INNER TIRE		01
03	0503010894	0.2\"X0.6\"X4.6\"X6F0.6\"X6\" WHEEL		01



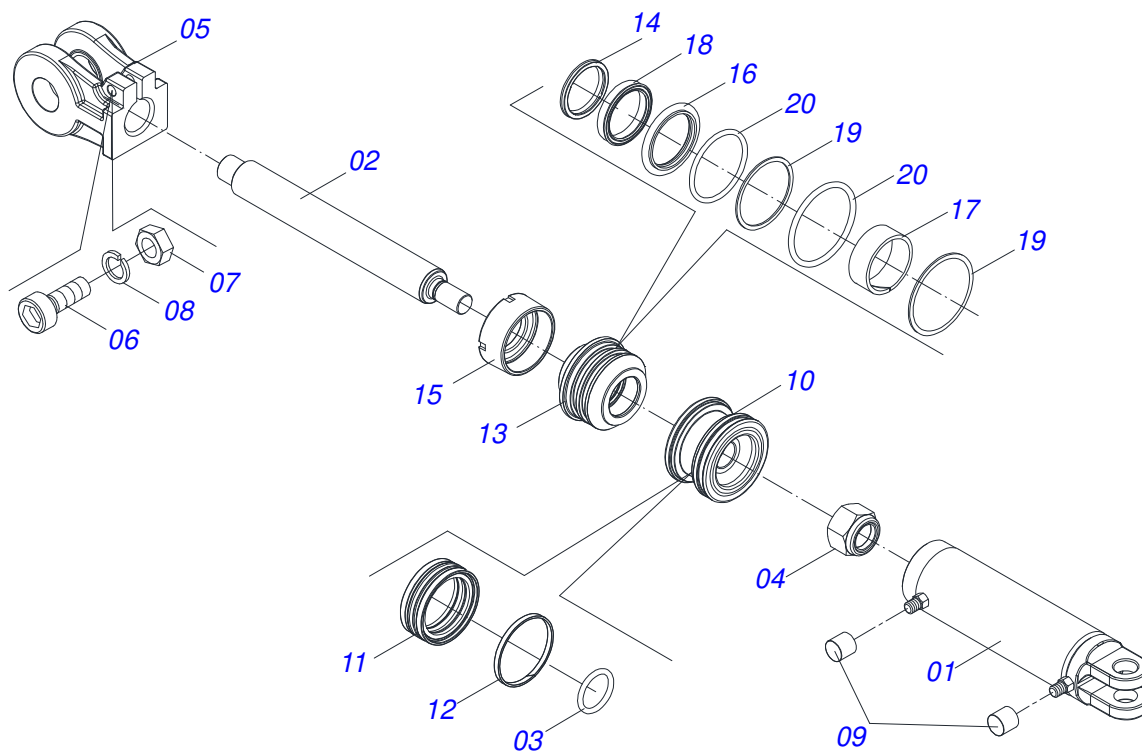


Item	Code	Description	See page	QT
01	0503010893	WHEEL		01
02	0503010033	7.50 X 16 INNER TIRE		01
03	0503010120	CANVAS TIRE		01



**HYDRAULIC CYLINDER**

0511058298

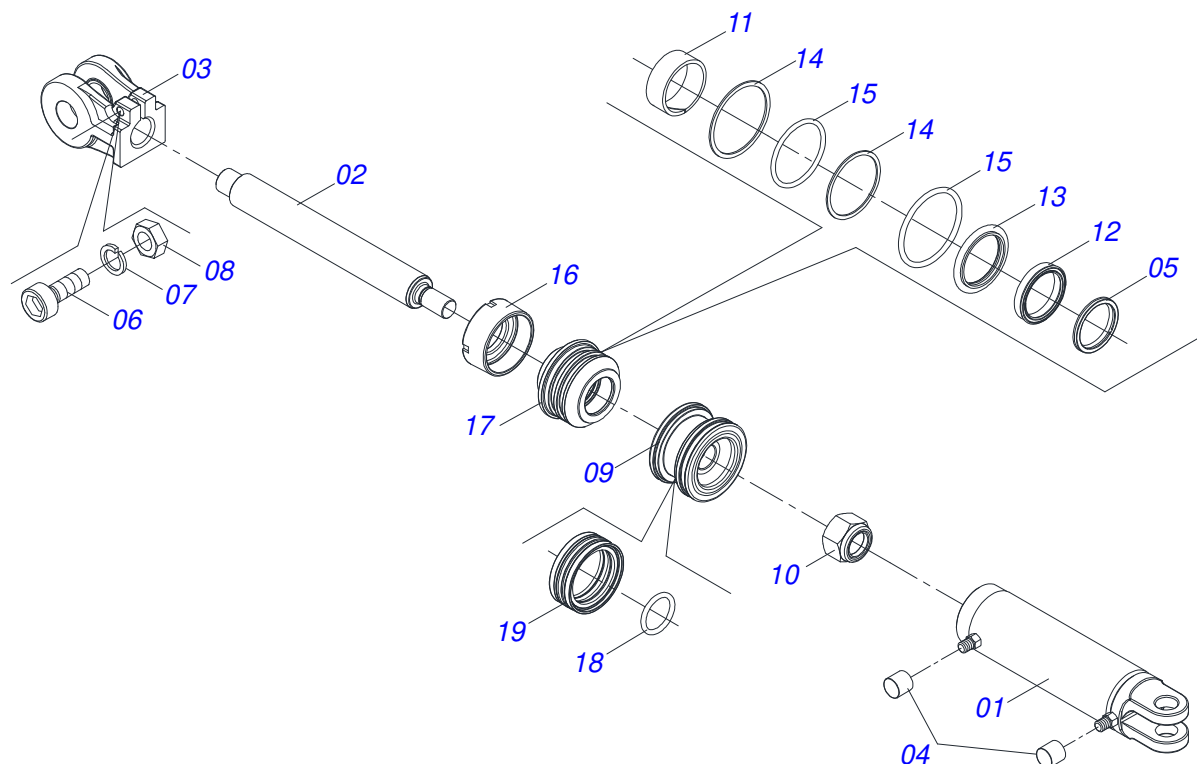


Item	Code	Description	See page	QT
001	0511061588	3.4" X 16" CYLINDER CASE		01
002	0521010421	HYDRAULIC CYLINDER TURNBUCKLE		01
003	0503010042	2-214 N 3006-9B O'RING		01
004	0503010063	1" SELF-ALIGNING NUT		01
005	0502040747	32.54 CLEVIS CLAMP		01
006	0503011094	3/8" X 2" BOLT		01
007	0503010026	3/8" NUT		01
008	0503010025	3/8" SPRING WASHER		01
009	0503030385	CYLINDER PLUG N-002		02
010	0571019710	1.7" X 3.4" PISTON		01
011	0503017935	RING		01
012	0503018144	RING		01
013	0571019711	RING SUPPORT		01
014	0503010761	D-1750 SCRAPER RING		01
015	0571019709	DETACHABLE COVER		01
016	0503017936	RING		01
017	0503017938	RING GUIDE		01
018	0503017937	GASKET		01
019	0503017940	8-337 BACK-UP RING		02
020	0503017939	2-337 N 3006-9B O' RING		02



**HYDRAULIC CYLINDER**

0511059180

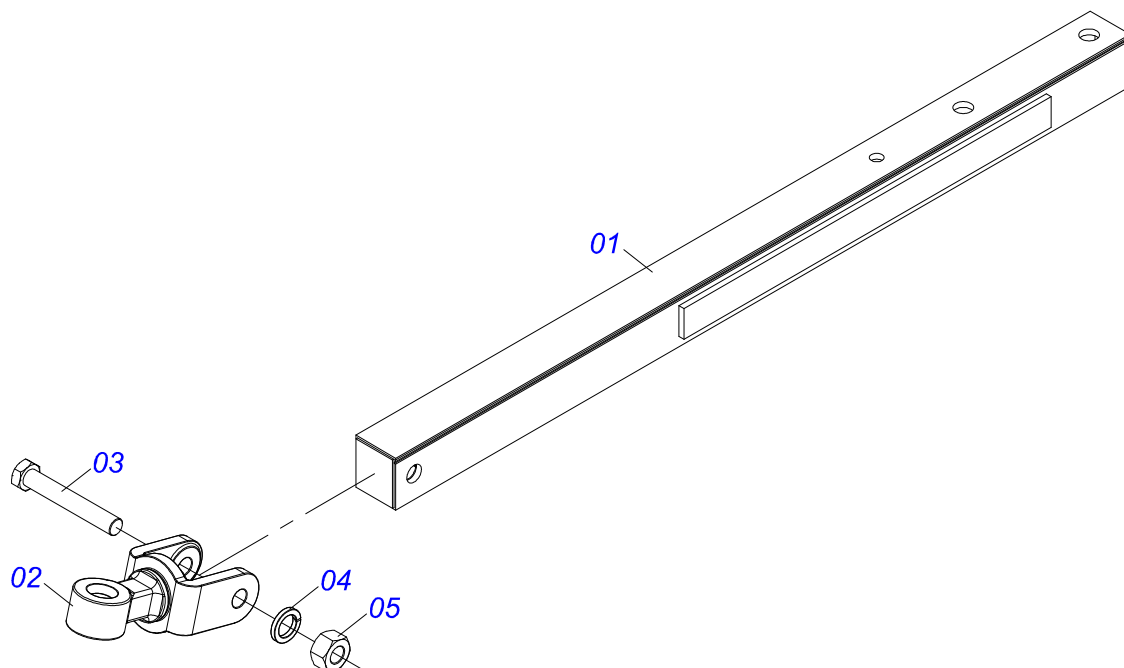


Item	Code	Description	See page	QT
001	0511070658	CYLINDER CASE		01
002	0571019958	HYDRAULIC CYLINDER TURNBUCKLE		01
003	0502040747	32.54 CLEVIS CLAMP		01
004	0503030385	CYLINDER PLUG N-002		02
005	0503010039	D-2000 SCRAPER RING		01
006	0503011094	3/8" X 2" BOLT		01
007	0503011443	3/8" SPRING WASHER		01
008	0503010026	3/8" NUT		01
009	0502012820	50.80 X 101.60 PISTON		01
010	0503010817	1.1/4" SELF LOCKING NUT		01
011	0503018025	RING GUIDE		01
012	0503018026	1870-2000-375 B GASKET		01
013	0503018024	RING BS		01
014	0503010338	2-342 N 3006-9B O-RING		02
015	0503011061	8-342 BACK-UP RING		02
016	0502012822	101.60 END CAP		01
017	0502012821	50.80 X 101.60 RING SUPPORT		01
018	0503018029	2-217 O-RING		01
019	0503015633	SELEMASTER SEALING		01



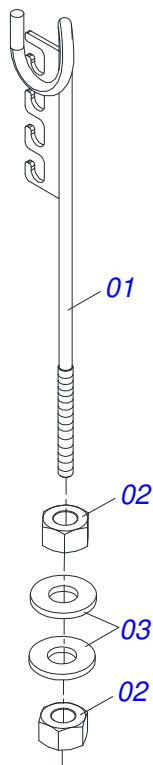
**DRAWBAR ASSY**

0501041096



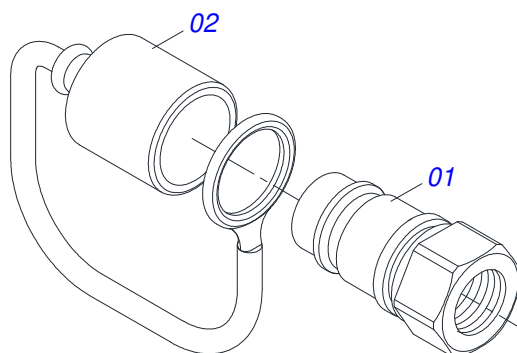
Item	Code	Description	See page	QT
01	0501060188	DRAWBAR ASSY		01
02	0521061775	TRACTOR HITCH		01
03	0501010060	1" X 6-1/2" BOLT		01
04	0503011438	SPRING WASHER		01
05	0501010059	1.5/8 NUT		01





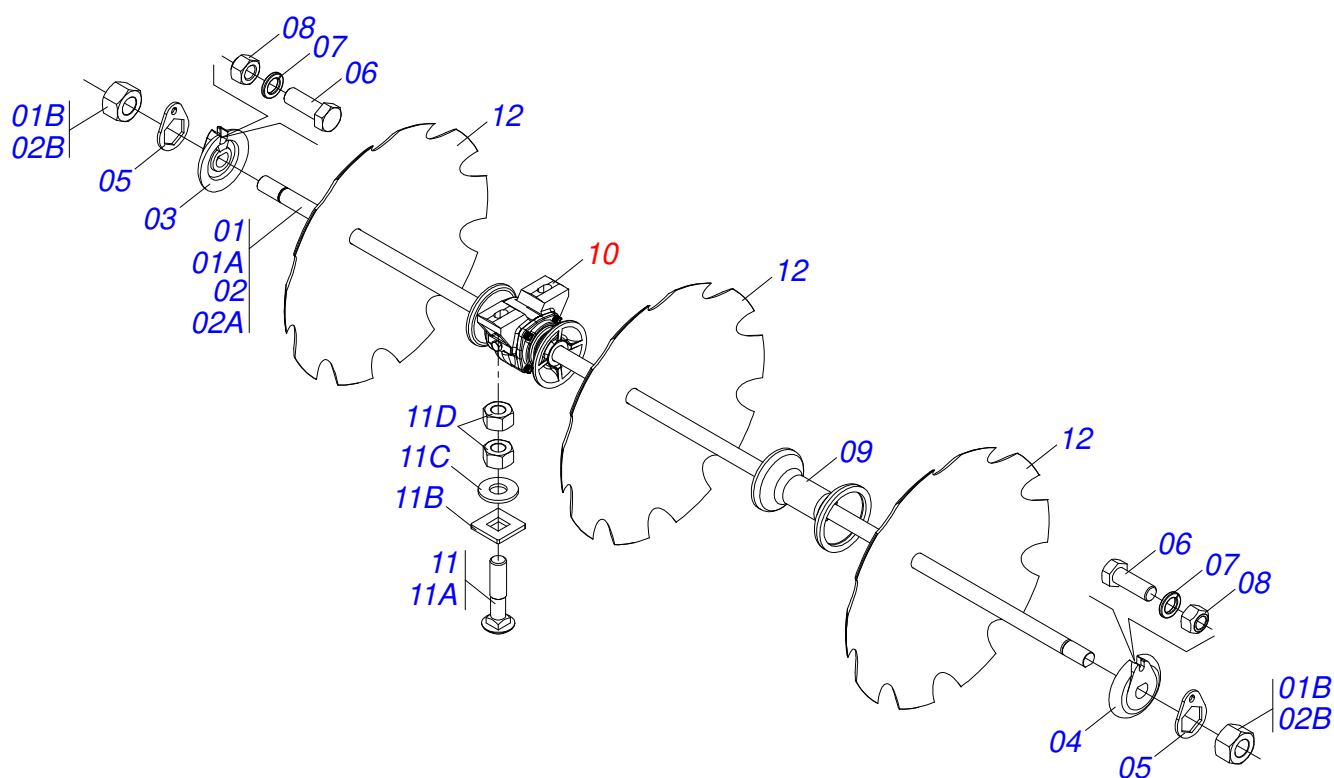
Item	Code	Description	See page	QT
01	0511067334	HOSE SOPPORT ASSY		01
02	0503010014	3/4" NUT		02
03	0501010322	FLAT WASHER		02





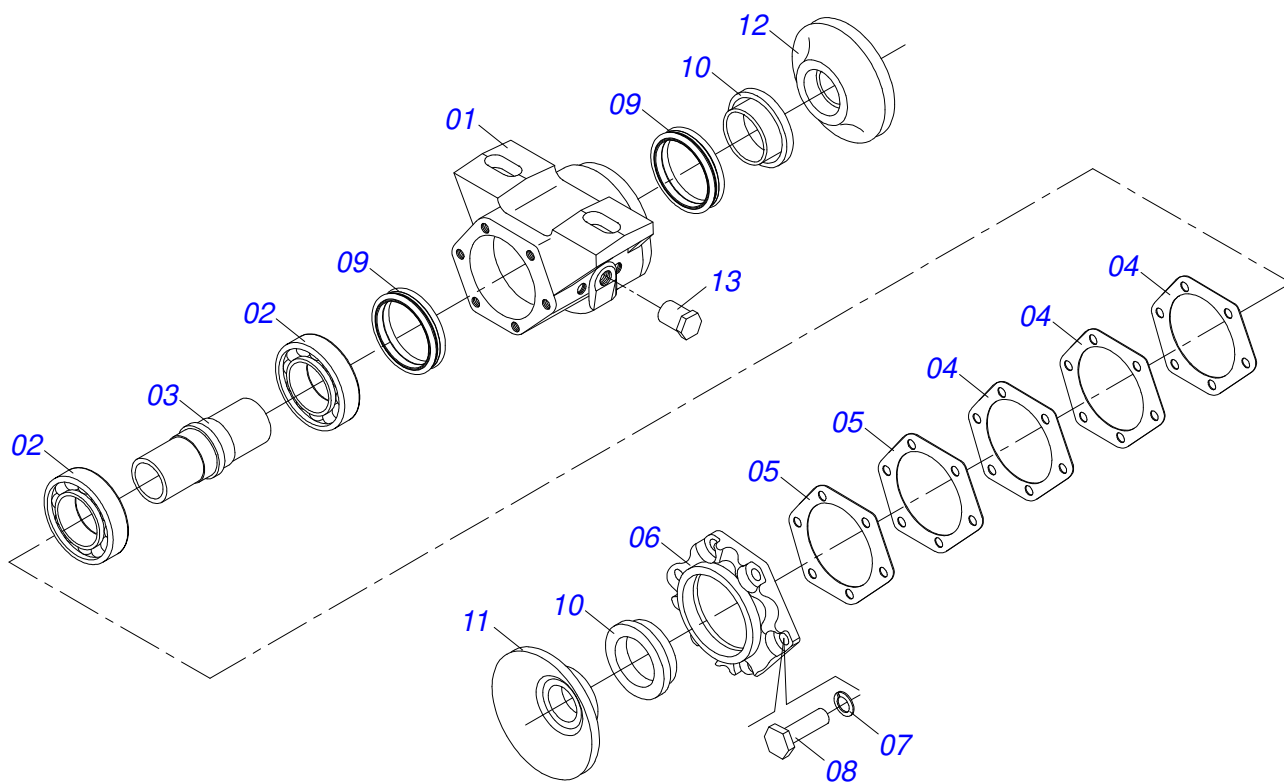
Item	Code	Description	See page	QT
01	0503011627	MALE QUICK COUPLER AGR 1/2 NPT		01
02	0503011882	MALE QUICK COUPLER CAP		01





Item	Code	Description	See page	18	20
01	0501046860	1-5/8" X 79" AXLE WITH NUTS 2-3/4"		02	00
01A	0501015329	1-5/8 X 79" AXLE		02	00
01B	0502040640	1.5/8" 2.3/4" NUT		04	00
02	0501046853	1-5/8" X 43" AXLE WITH NUTS 2-3/4		00	04
02A	0501015029	1-5/8" X 43" AXLE		00	04
02B	0502040640	1.5/8" 2.3/4" NUT		00	08
03	0502011048	1-5/8" EXTERNAL AXLE WASHER		02	04
04	0502011047	1-5/8" INNER AXLE WASHER		02	04
05	0511014339	1-5/8" 2.8" NUT LOCK		04	08
06	0503010232	5/8" X 1.3/4" BOLT		04	08
07	0503010027	5/8" SPRING WASHER		04	08
08	0503012412	5/8 UNC SELF LOCKING NUT		04	08
09	0502010626	8.9" 1-5/8" SPACER		10	08
10	0501046923	9"X 1-5/8" OIL BATH BEARING	12	06	08
11	0511040034	3/4" X 3-1/4" BOLT ASSY		12	16
11A	0503015154	5/8" X 2.3/4" BOLT		12	16
11B	0501010947	5/8 NUT LOCK		12	16
11C	0501012140	FLAT WASHER		12	16
11D	0503010013	5/8" NUT		24	32
12	0602030369	24" X 0.2" NOTCHED DISC BLADE		18	00
12.	0602030283	24" X 6 NOTCHED DISC BLADE		00	20





Item	Code	Description	See page	QT
01	0502020445	HOUSING DM	01	
02	0503010113	30212 ROLLER BEARING	02	
03	0502010639	AXLE FOR CM/DM	01	
04	0503031972	137 X 113,2 X 0,3 JOINT	03	
05	0503031973	137 X 113,2 X 0,1 JOINT	02	
06	0502012445	BEARING COVER BOX (BOX SLIGHTLY)	01	
07	0503011443	3/8" SPRING WASHER	06	
08	0503010237	3/8" X 1" BOLT	06	
09	0503030027	DUO-CONE SEAL	02	
10	0502010633	SEAL RETAINER	02	
11	0502040239	OUTER FLANGE	01	
12	0502040240	INNER FLANGE	01	
13	0503010856	OIL PLUG	01	









[www.marchesan.com.br](http://www.marchesan.com.br)



**Technical Publications | Elaboration and Revision**

ALESSANDRA PATRICIA KAWAHARA CARRILI