

# **PARTS CATALOG**

## **DOUBLE OFFSET DISK HARROW**

**GH 1007T - 20/28D**

**Code: 0501092243**



**Series: S-0693**

**Rev.: 00**

**Date Rev.: JUNHO/2018**

**ORIGINAL PARTS  
TATU**



# PRODUCTS

Code	Description
0102190149	GH 1007T 28 X 20 X 3,5 DM MT S0693
0102190080	GH 1007T 20 X 20 X 3,50 DM MT S0693

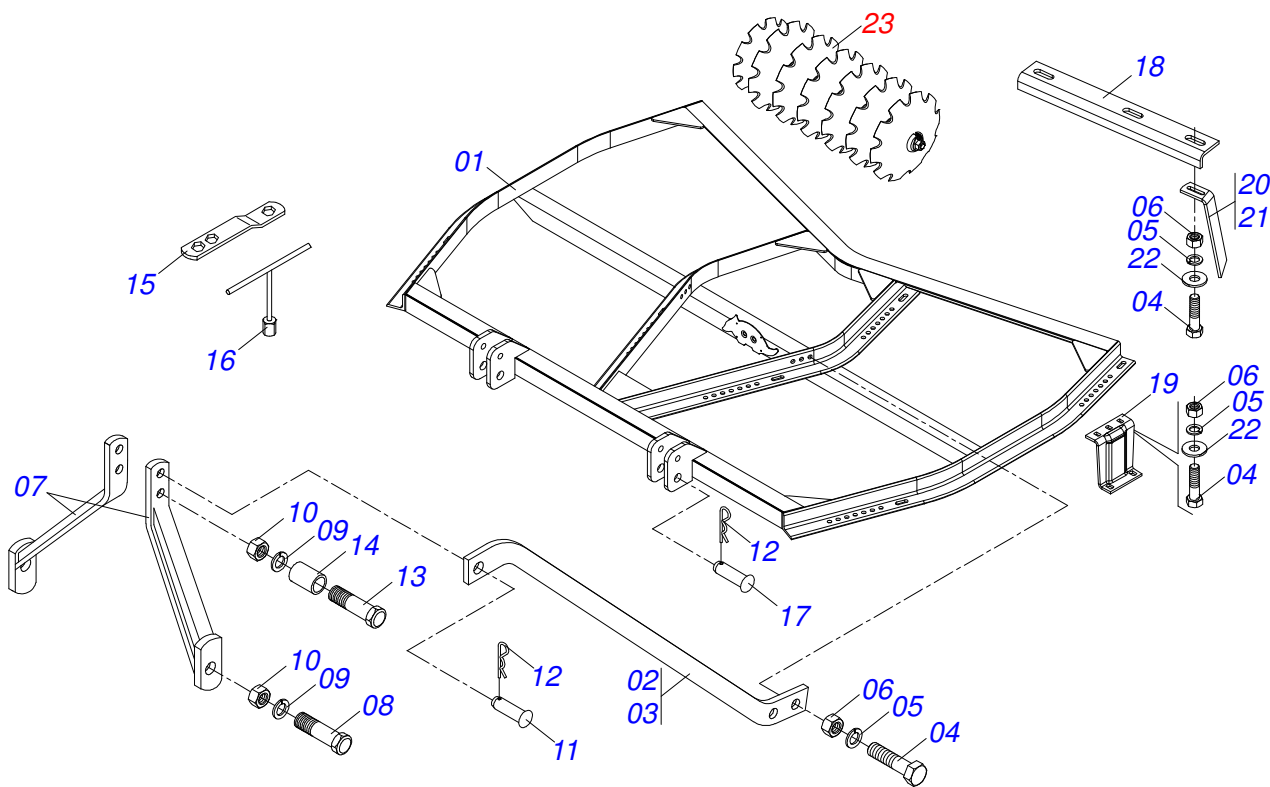
## ATTENTION: **IMPORTANT**

MARCHESAN S/A RESERVES THE RIGHT AT ANY TIME TO MAKE IMPROVEMENTS IN THE DESIGN, MATERIAL OR SPECIFICATIONS OF MACHINERY, EQUIPMENT OR PARTS WITHOUT THEREBY BECOMING LIABLE TO MAKE SIMILAR CHANGES IN MACHINERY, EQUIPMENT OR PARTS PREVIOUSLY SOLD.

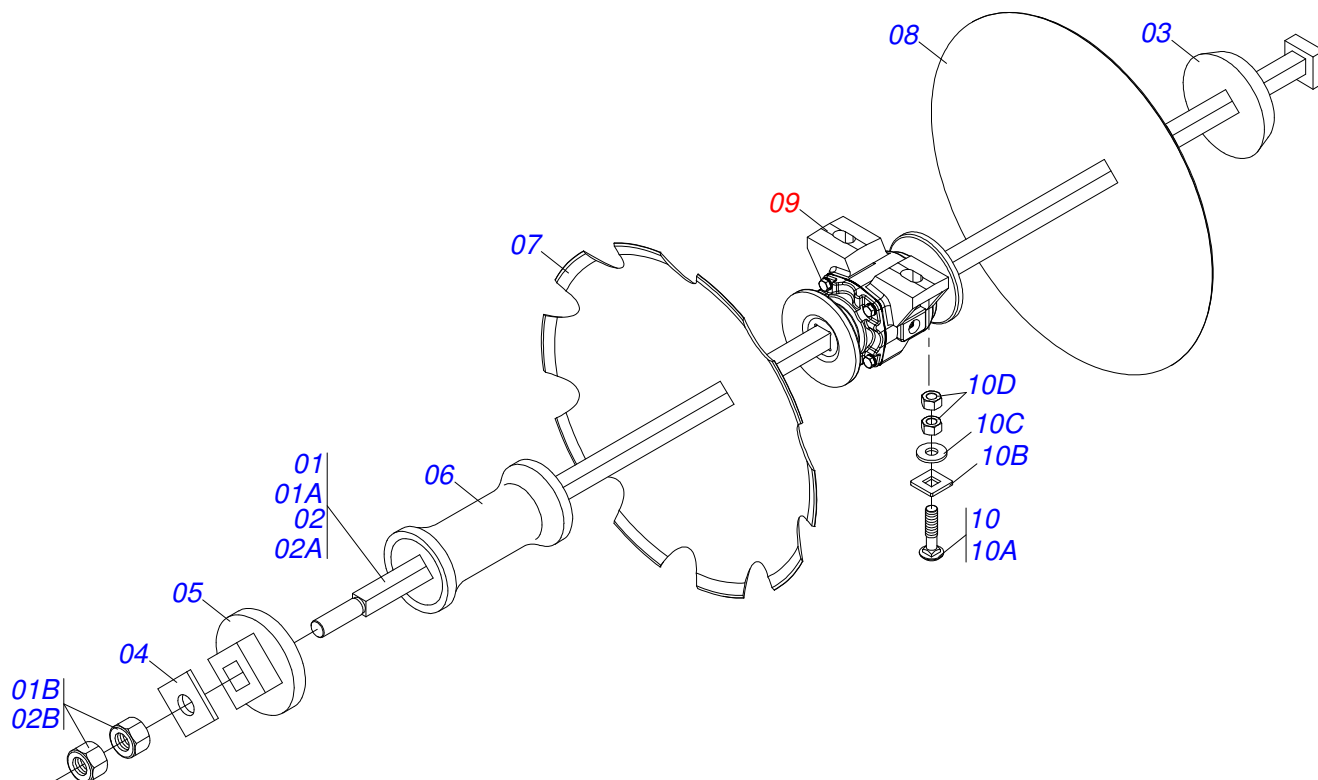
# INDEX

0909094192	FRAME ASSY	.....	1
0909094193	GANG DISC	.....	2
0501046921	7.5" Q1" OIL BATH BEARING	.....	3

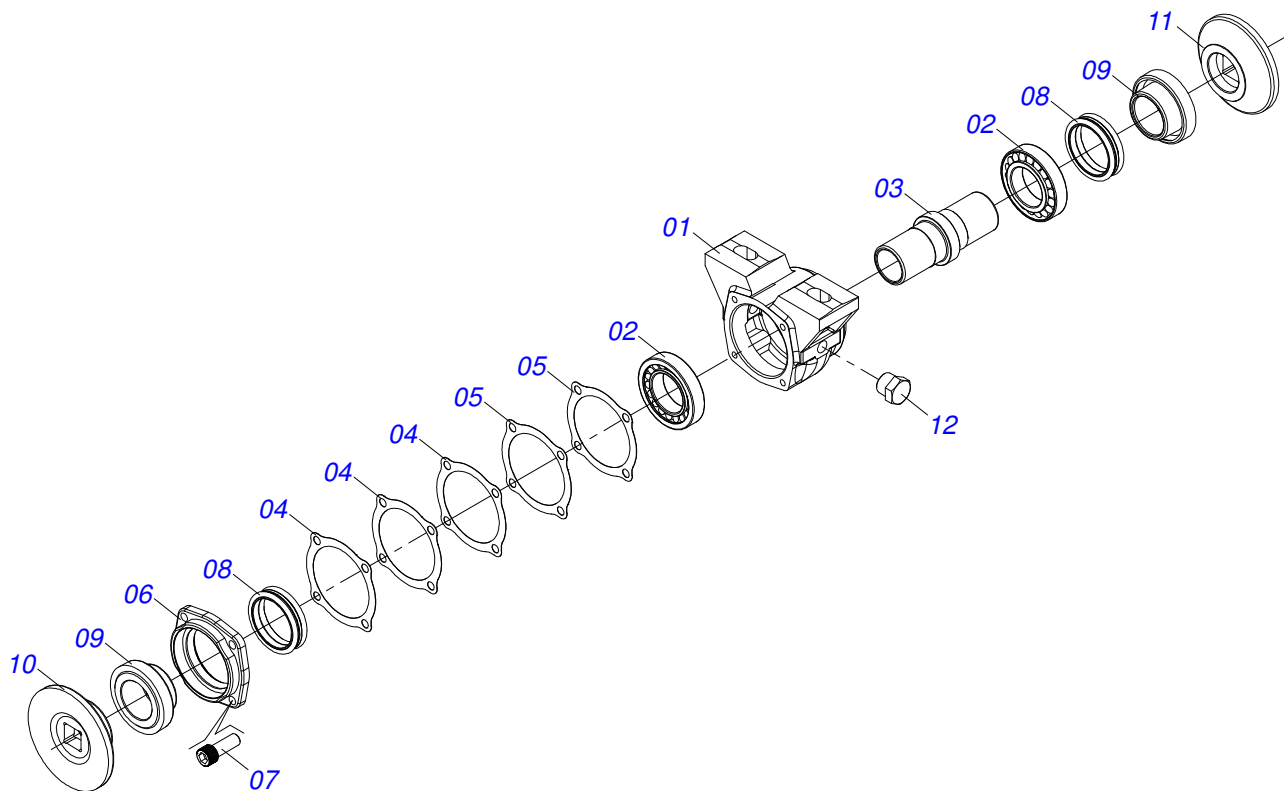
FRAME ASSY



Item	Code	Description	20	28
01	0501066431	FRAME	01	00
01.	0501066433	FRAME	00	01
02	0501010404	RIGHT ATTACHMENT BAR	01	00
02.	0501010406	RIGHT ATTACHMENT BAR	00	01
03	0501010407	LEFT ATTACHMENT BAR	01	00
03.	0501010409	LEFT ATTACHMENT BAR	00	01
04	0503011082	C1/2" X 1.3/4" BOLT	04	04
05	0503010019	1/2" SPRING WASHER	44	52
06	0503010060	1/2" NUT	44	52
07	0501066378	SEMI CAB	02	02
08	0501018059	3/4" X 2-1/4" BOLT	02	02
09	0503010023	SPRING WASHER	03	03
10	0503010014	3/4" NUT	03	03
11	0521010578	COUPLING SHAFT	01	01
12	0503031035	HAIR PIN	03	03
13	0503011198	C3/4" X 6" BOLT	01	01
14	0521010490	SLEEVE SPACER	01	01
15	0511018451	5/8" X 3/4" X 1" UNIVERSAL	01	01
16	0501068289	5/8" WRENCH T	01	01
17	0521010595	1.1" X 4.3" COUPLING SHAFT	02	02
18	0511012000	27.2" BAR OF THE FIX OF THE SCRAPER	04	00
18.	0511012002	42.7" BAR OF THE FIX OF THE SCRAPER	00	04
19	0501010451	BRACKET	08	08
20	0511014512	FRONT SCRAPER GH	04	08
21	0511014511	REAR SCRAPER GH	04	08
22	0511017302	FLAT WASHER	52	60
23	0909094193	GANG DISC	01	01



Item	Code	Description	20	28
01	0501044108	1" X 35.6" SQUARE AXLE WITH NUTS	04	00
01A	0511011994	1" X 35.6" SQUARE SHAFT	04	00
01B	0501010059	1.5/8 NUT	08	00
02	0501044114	1" X 51" SQUARE AXLE WITH NUTS	00	04
02A	0511011996	1" X 51" SQUARE SHAFT	00	04
02B	0501010059	1.5/8 NUT	00	08
03	0502010075	EXTERNAL AXLE WASHER	04	04
04	0501010450	NUT LOCK	04	04
05	0502010076	INNER AXLE WASHER FQ	04	04
06	0502010933	192,5 SPACER	08	16
07	0602027230	DR20X3,5 C57AF02FC1.1/16 10RE JUMIL	10	14
08	0601027184	DL20X3,5 C57AF02FC1.1/16 9901022 JU	10	14
09	0501046921	7.5" Q1" OIL BATH BEARING	08	08
10	0501058802	5/8 UNC X 2.3/4 BOLT ASSY	16	16
10A	0503015154	5/8" X 2.3/4" BOLT	16	16
10B	0501010947	5/8 NUT LOCK	16	16
10C	0501012140	FLAT WASHER	16	16
10D	0503010013	5/8" NUT	32	32



Item	Code	Description	QT
01	0502010540	HOUSING DM	01
02	0503010111	30210 ROLLER BEARING	02
03	0502040381	AXLE	01
04	0503030013	4.4" X 3.5" X 0.004" JOINT	03
05	0503030684	4.4" X 3.5" X 0.004" JOINT	02
06	0502020424	HOUSING CAP DM	01
07	0503010134	3/8" X 1" BOLT	04
08	0503030026	SEAL LP JB-253	02
09	0502010541	SEAL RETAINER	02
10	0502010297	OUTER FLANGE	01
11	0502010298	INNER FLANGE	01
12	0503010856	OIL PLUG	01





**MARCHESAN IMPLEMENTOS E MÁQUINAS AGRÍCOLAS TATU S.A.**

AV. Marchesan, 1979 - Post office box, 131 - CEP 15994-900 - Matão - SP - Brazil

Phone +55 16.3382-8282

(FAX Parts) + 55 16.3382. 8297 - (Export) + 55 16.3382.1003

e.mail: [tatu@marchesan.com.br](mailto:tatu@marchesan.com.br) [www.marchesan.com.br](http://www.marchesan.com.br)

**Technical Publications: Elaboration**

ALESSANDRA PATRICIA KAWAHARA CARRILI

**Technical Publications: Revision**

ALESSANDRA PATRICIA KAWAHARA CARRILI

*Contact Catálogo:*

*E-mail = [jgaspari@marchesan.com.br](mailto:jgaspari@marchesan.com.br)*

**ORIGINAL PARTS  
TATU**

