

PCA - AGRICULTURAL FRONT LOADER

PCA 600 MF 4265/75/83 SHT CT S/AC PA MPK

Code: 0501092238
Series: S-0313
Revision: 00
Date Revision: SETEMBRO/2018

PARTS CATALOGUE



MARCHESAN



PRODUCTS

Code	Description
0106111786	PCA 600 MF 4265/75/83-4 SHT CT S/AC MPK S-0313

ATTENTION: IMPORTANT

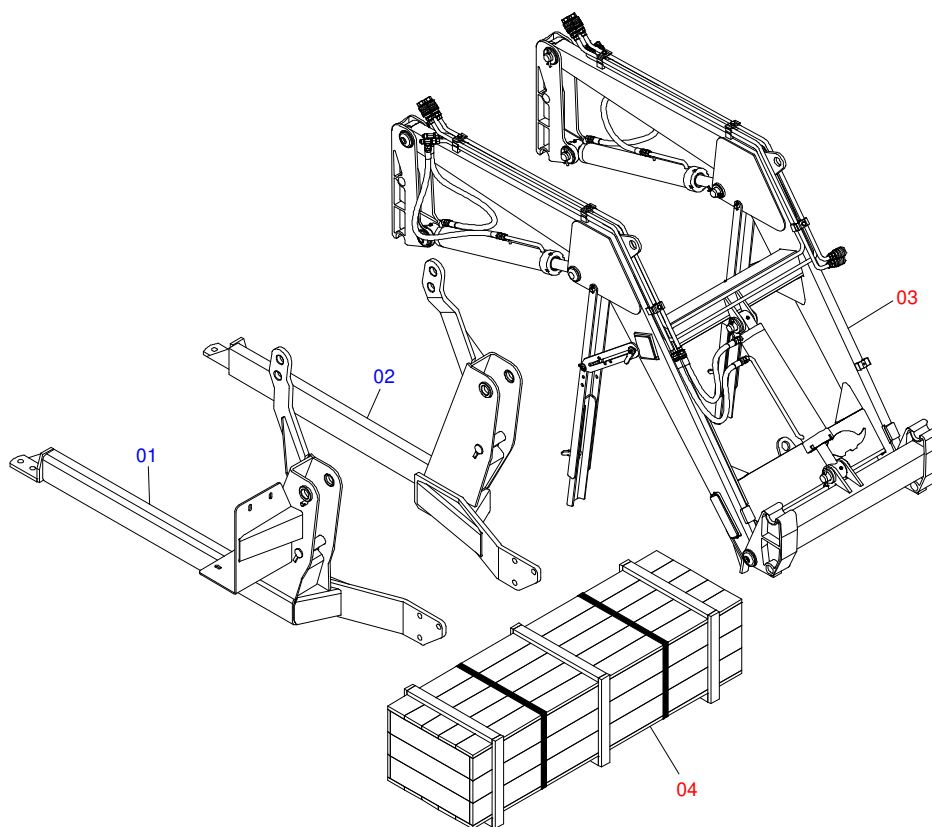
Marchesan S.A. reserves the right to improve and/or modify the technical features of its products, without obligation to do the same with those products already sold and without prior knowledge of the dealer or the consumer. The photos are only illustrative.



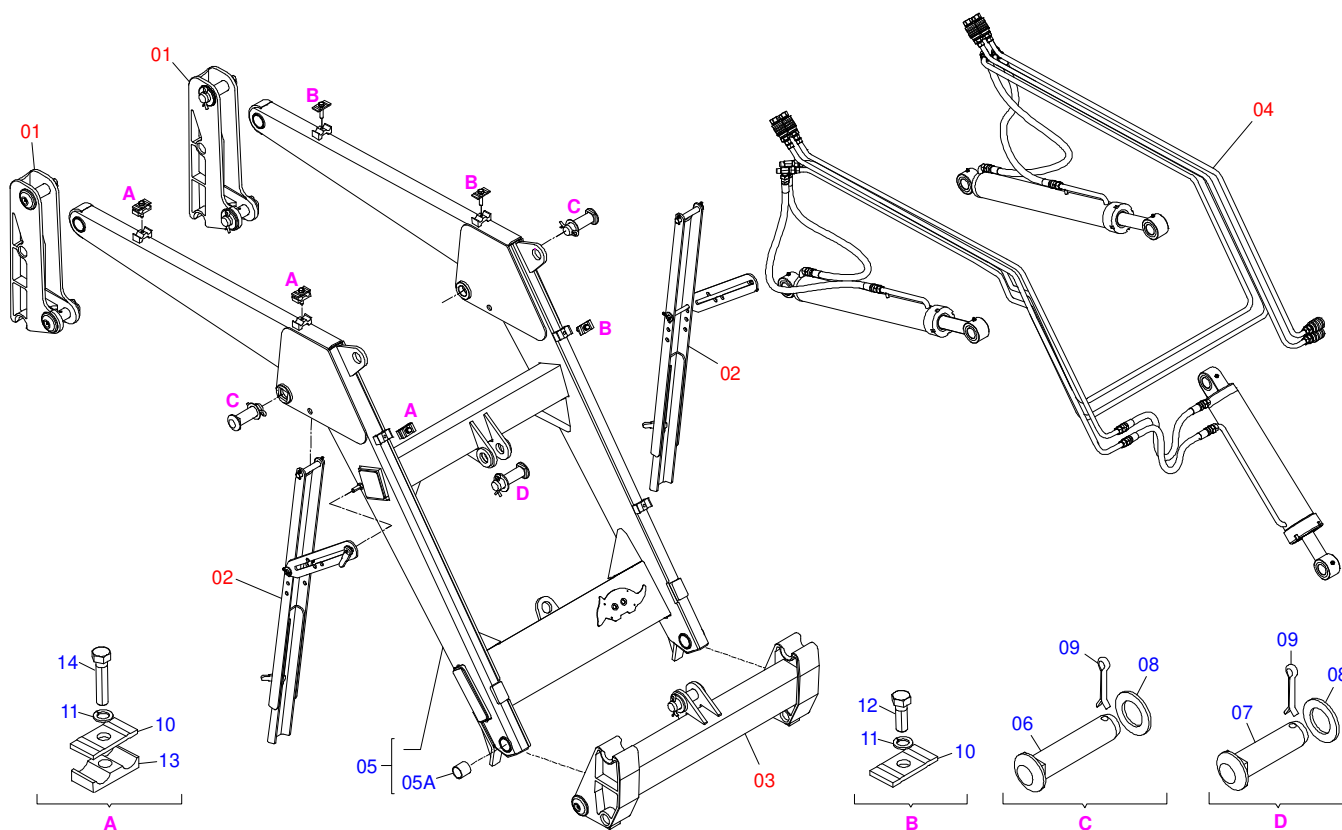
MARCHESAN

INDEX

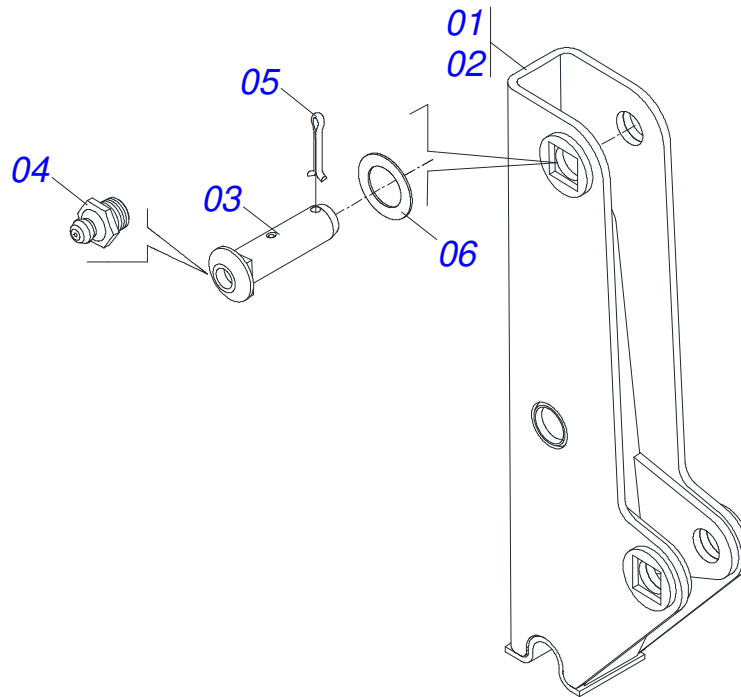
0106111786	PCA 600 MF 4265/75/83-4 SHT CT S/AC MPK S-0313	1
0521043310	FULL MOBILE HOLDER - PCA 600	2
0909094823	MOBILE TOWER AND COMPONENTS	3
0909092667	ADJUSTABLE REST OF MOVABLE SUPPORT	4
0909094826	ARTICULATOR SUPPORT AND COMPONENTS	5
0909094819	HYDRAULIC CIRCUIT OF THE MOBILE HOLDER	6
0521050762	44,45 X 76,20 X 865 X 555 HYDRAULIC CYLINDER	7
0511057915	44,45 X 101,60 X 702 X 738 HIDRAULIC CYLINDER	8
0501053834	MALE QUICK COUPLER	9
0501053835	FEMALE QUICK COUPLER	10
0521021663	BOX WITH COMPONENTS	11
0909094854	OIL RESERVOIR AND COMPONENTS	12
0501047575	OIL RESERVOIR ASSY	13
0501041108	RETURNING FILTER ASSY	14
0909094860	FRAME AND COMPONENTS	15
0501041849	ASSY 1.1/4 NC X 910 ROD	16
0909094856	TRIPLE COMMAND SET 1/2	17
0501048918	1/2 FULL TRIPLE COMMAND - HIDROV/DANFOSS	18
0501047852	COMPLETE CONTROLLER	19
0909094859	PUMP AND COMPLEMENTS	20
0501059935	PUMP WITH SUCTION AND PRESSURE DUCTS	21
0511057490	SHT HOSE SET	22



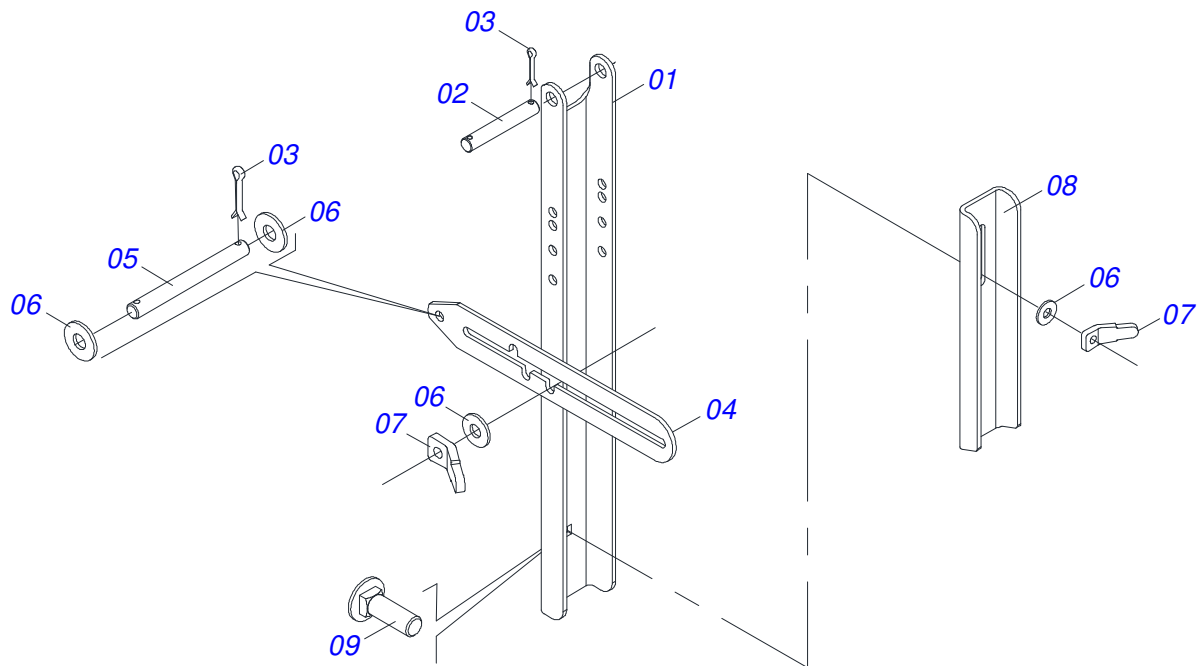
Item	Code	Description	See page	QT
01	0521061688	RIGHT FRAME - PCA SHT MF		01
02	0521061550	LEFT FRAME - PCA SHT MF		01
03	0521043310	FULL MOBILE HOLDER - PCA 600	2	01
04	0521021663	BOX WITH COMPONENTS	11	01



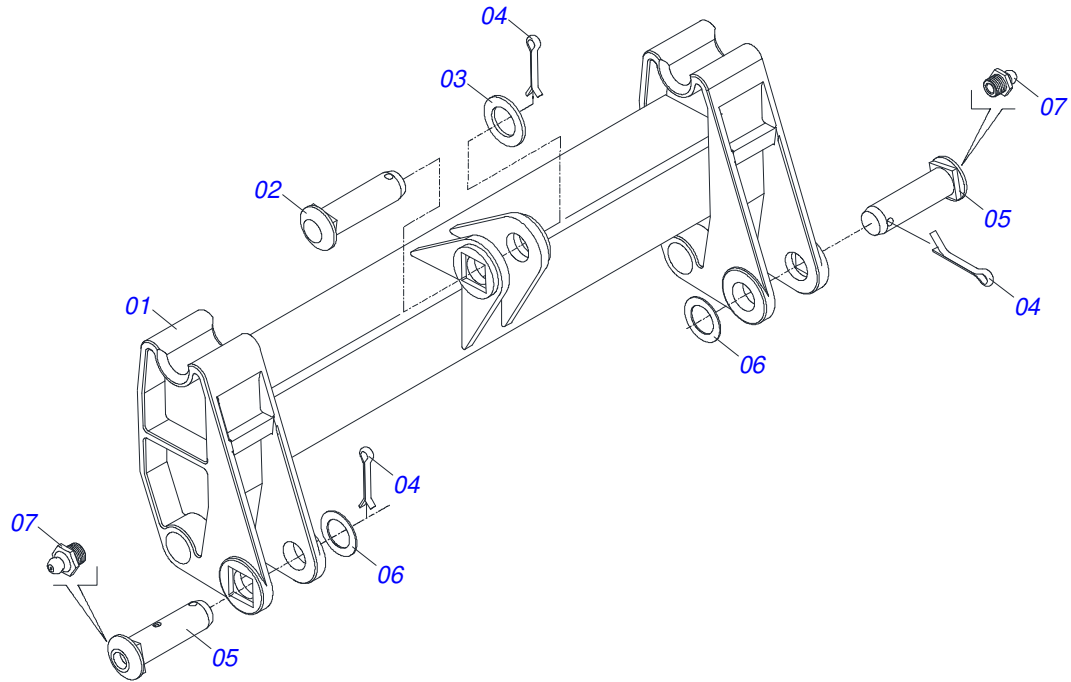
Item	Code	Description	See page	QT
01	0909094823	MOBILE TOWER AND COMPONENTS	3	02
02	0909092667	ADJUSTABLE REST OF MOVABLE SUPPORT	4	02
03	0909094826	ARTICULATOR SUPPORT AND COMPONENTS	5	01
04	0909094819	HYDRAULIC CIRCUIT OF THE MOBILE HOLDER	6	01
05	0521061683	MOBILE SUPPORT - PCA MF-4275/4283		01
05A	0501110253	BUSHING 37,70 X 55 X 70 PCA		04
06	0511019521	1.5" X 1.4" PIVOT SHAFT		02
07	0521010904	1.5" X 1.4" PIVOT SHAFT		01
08	0501012916	FLAT WASHER 38,50 X 66 X 4,75 ZN		03
09	0503010534	3/8 X 2-1/2 COTTERPIN		03
10	0531011180	UPPER BODY CLIP		06
11	0503010180	7/16" SPRING WASHER		06
12	0503011102	BOLT 7/16 UNC X 1.1/4 C S G.5 ZN		03
13	0502010477	HOSE CLAMP		03
14	0503012555	SCREW 7/16 UNC X 2 CS RT G.7 ZN		03



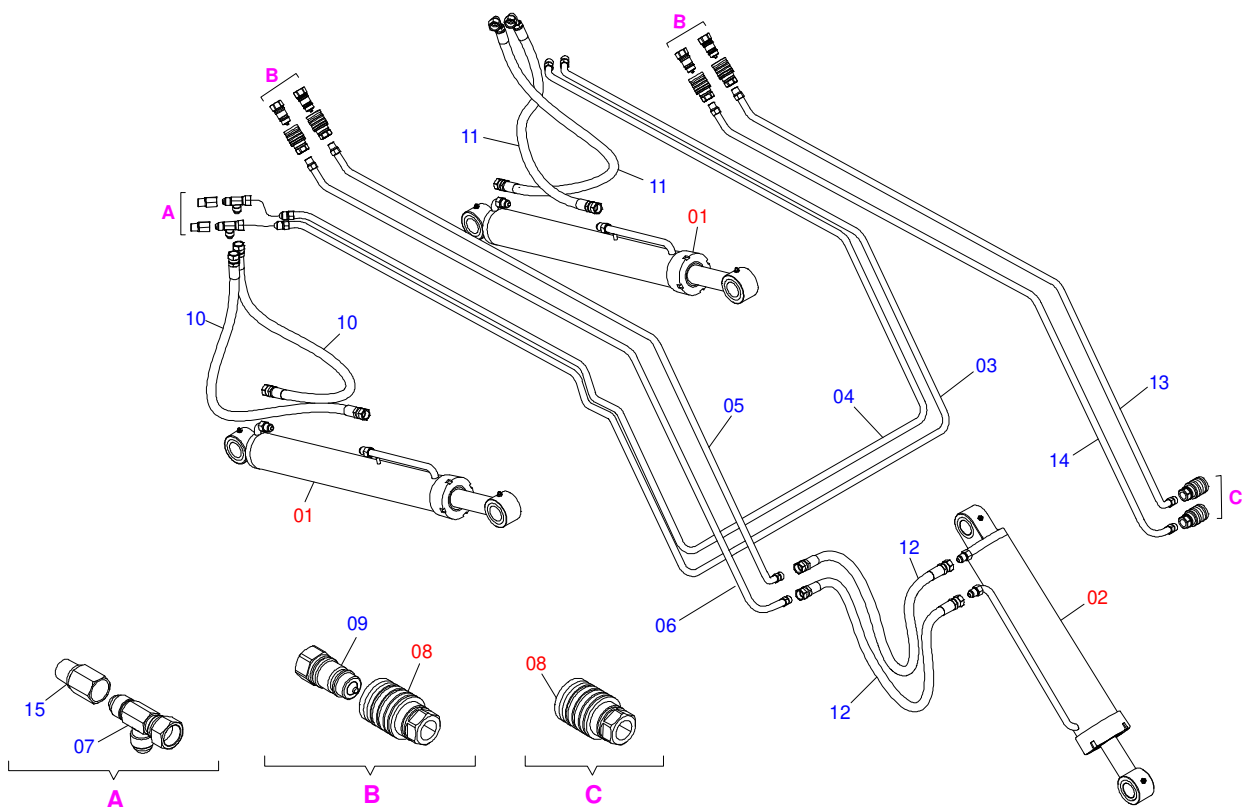
Item	Code	Description	See page	QT
01	0521061673	RIGHT MOBILE TOWER		01
02	0521061674	LEFT MOVEL TOWER		01
03	0511019519	1.5" X 1.4" PIVOT SHAFT		04
04	0503010002	1800 GREASE FITTING		04
05	0503010534	3/8 X 2-1/2 COTTERPIN		04
06	0511819685	FLAT WASHER		04



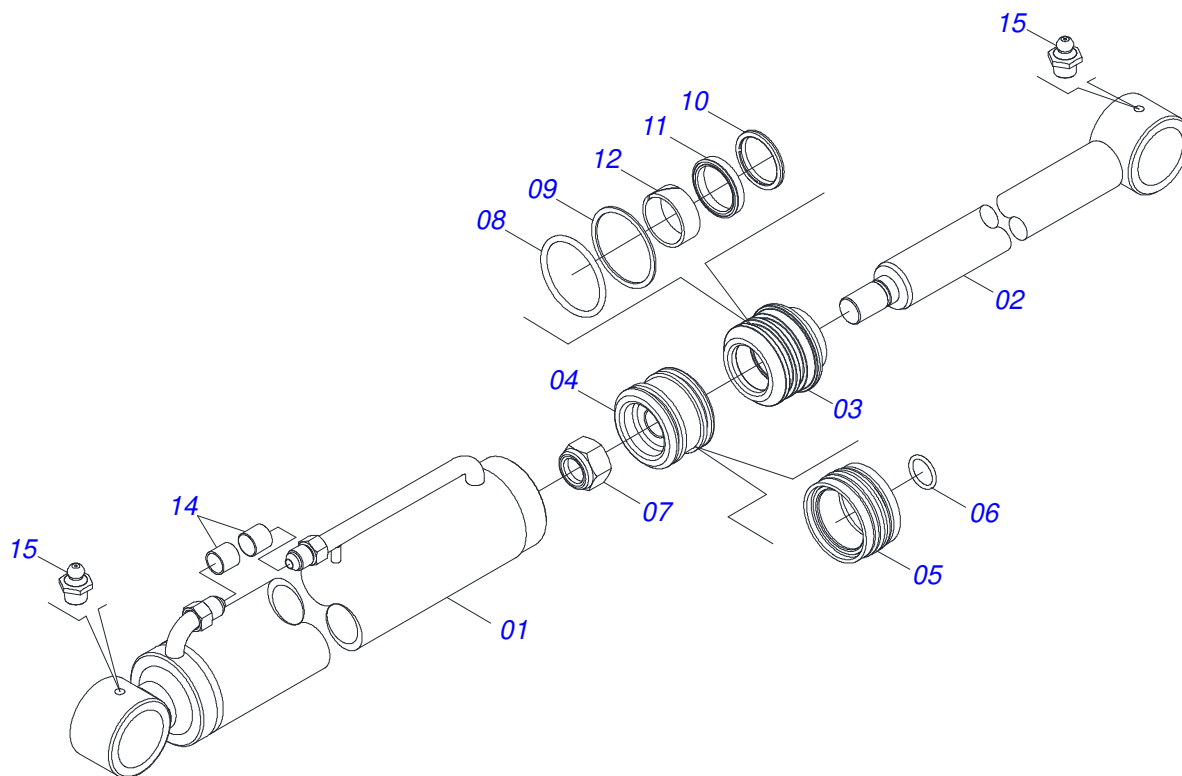
Item	Code	Description	See page	QT
01	0561016401	PLOUGH SUPPORT BODY	02	
02	0511013598	3/4" X 4.7" COUPLING SHAFT	02	
03	0503010071	3/16" X 1" COTTERPIN	08	
04	0511019634	CONTROL LOCK	02	
05	0521012823	COUPLING SHAFT	02	
06	0511017302	FLAT WASHER	08	
07	0561016329	LATCH HOLDER REST PCA	04	
08	0561016619	COMPLEMENTON REST	02	
09	0503014378	1/2" X 1-1/2" BOLT	02	



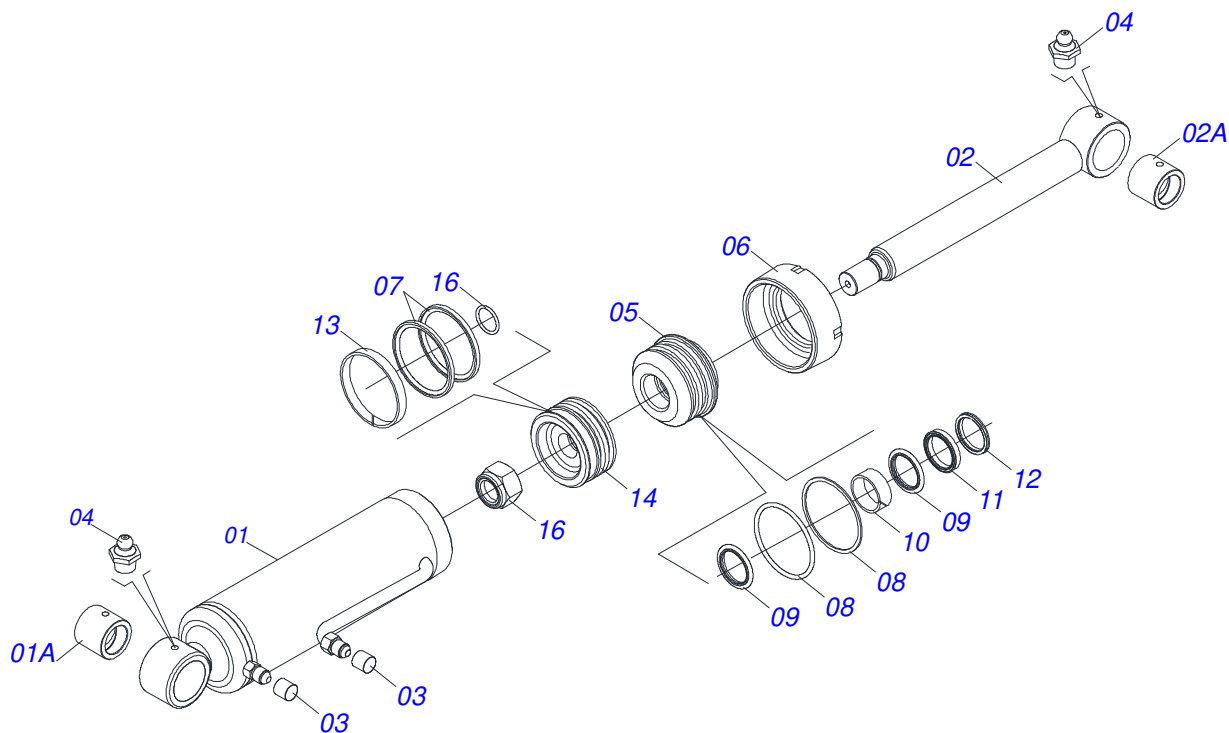
Item	Code	Description	See page	QT
01	0501069934	ARTÍCULOS SOPORTE PCA 600 AX 5.80-4		01
02	0521010904	1.5" X 1.4" PIVOT SHAFT		01
03	0501012916	FLAT WASHER 38,50 X 66 X 4,75 ZN		01
04	0503010534	3/8 X 2-1/2 COTTERPIN		03
05	0511019519	1.5" X 1.4" PIVOT SHAFT		02
06	0511019685	FLAT WASHER		02
07	0503010002	1800 GREASE FITTING		02



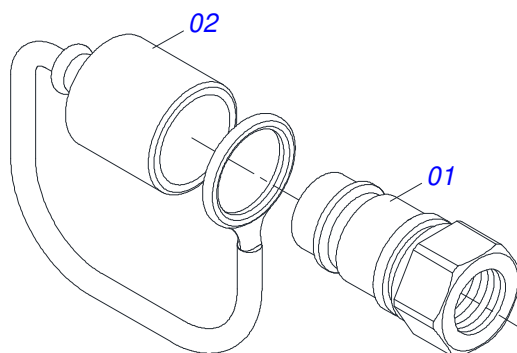
Item	Code	Description	See page	QT
01	0521050762	44,45 X 76,20 X 865 X 555 HYDRAULIC CYLINDER	7	02
02	0511057915	44,45 X 101,60 X 702 X 738 HIDRAULIC CYLINDER	8	01
03	0521061695	EXTERNAL OIL DISTRIBUTOR - PCA 4275/4283		01
04	0521061694	INTERNAL OIL DISTRIBUTOR - PCA 4275/4283		01
05	0521061696	INTERNAL TOP OIL DISTRIBUTOR - PCA 4275/4283		01
06	0521062948	UPPER OUTER OIL DISTRIBUTOR		01
07	0503011968	3/4" 8R6X-S T ADAPTER WITH SWIVEL NUT		02
08	0501053835	FEMALE QUICK COUPLER	10	06
09	0501053834	MALE QUICK COUPLER	9	06
10	0501080105	3/8 X 700 TR-TR HOSE		02
11	0501080413	3/8" X 27" TR-TC HOSE		02
12	0501080635	3/8" X 19" TR-TR HOSE		02
13	0511061634	LEFT OIL TUBE		01
14	0511061635	RIGHT OIL TUBE		01
15	0511019876	1/2" NIPPLE		02



Item	Code	Description	See page	QT
01	0511071163	76,20 X 740 CYLINDER CASE		01
02	0521066424	AIR TURNBUCKLE		01
03	0581010301	RING SUPPORT		01
04	0581010304	PISTON		01
05	0503018136	ZW 007600260 AGEL RING		01
06	0503010042	2-214 N 3006-9B O'RING		01
07	0503010063	1" SELF-ALIGNING NUT		01
08	0503010343	2-334 N 3006-9B O'RING		02
09	0503011059	8-334 BACK-UP RING		02
10	0503010761	D-1750 SCRAPER RING		01
11	0503017937	GASKET		01
12	0503017938	RING GUIDE		01
13	0502011899	MOBILE COVER		01
14	0503030385	CYLINDER PLUG N-002		02
15	0503010002	1800 GREASE FITTING		02

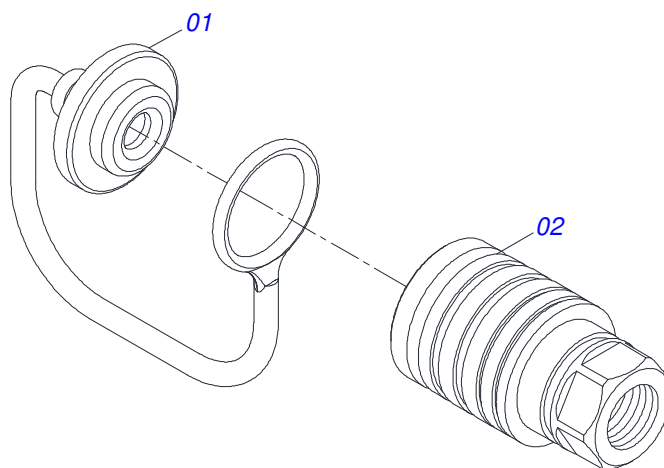


Item	Code	Description	See page	QT
01	0511066339	101,6 X 548 CYLINDER CASE - PCA 600		01
01A	0521010514	38,1 X 52,9 X 50 SLEEVE INTER		01
02	0521066430	44,45 X 630 EXTENDER		01
02A	0521010514	38,1 X 52,9 X 50 SLEEVE INTER		01
03	0503030385	CYLINDER PLUG N-002		02
04	0503010002	1800 GREASE FITTING		02
05	0581010302	RING OF SUPPORT		01
06	0502012822	101.60 END CAP		01
07	0503018158	OE 101605200211D-BR RING BS		02
08	0503011061	8-342 BACK-UP RING		02
09	0503010338	2-342 N 3006-9B O'RING		02
10	0503017938	RING GUIDE		01
11	0503017937	GASKET		01
12	0503010761	D-1750 SCRAPER RING		01
13	0503010994	W2-4000-500 PK RING G.E		01
14	0581010303	PISTON 4 - PCA 600		01
15	0503018029	2-217 O'RING		01
16	0503010817	1.1/4" SELF LOCKING NUT		01

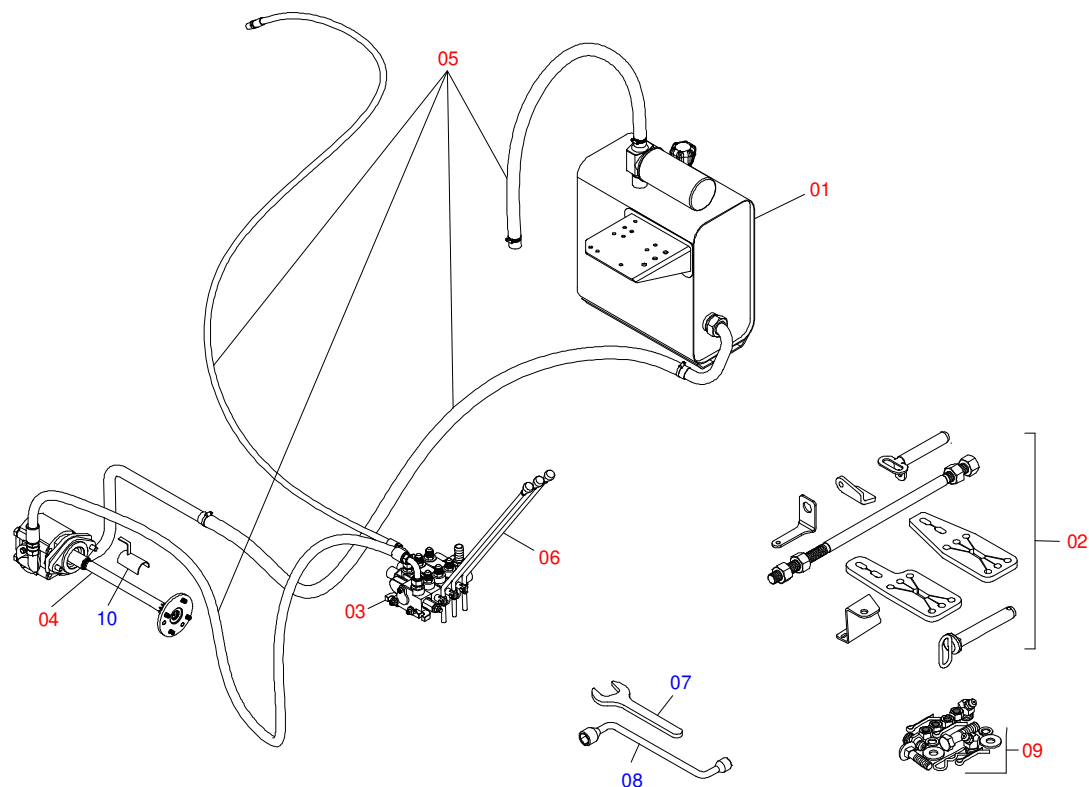


Item	Code	Description	See page	QT
01	0503011627	MALE QUICK COUPLER AGR 1/2 NPT		01
02	0503011882	MALE QUICK COUPLER CAP		01

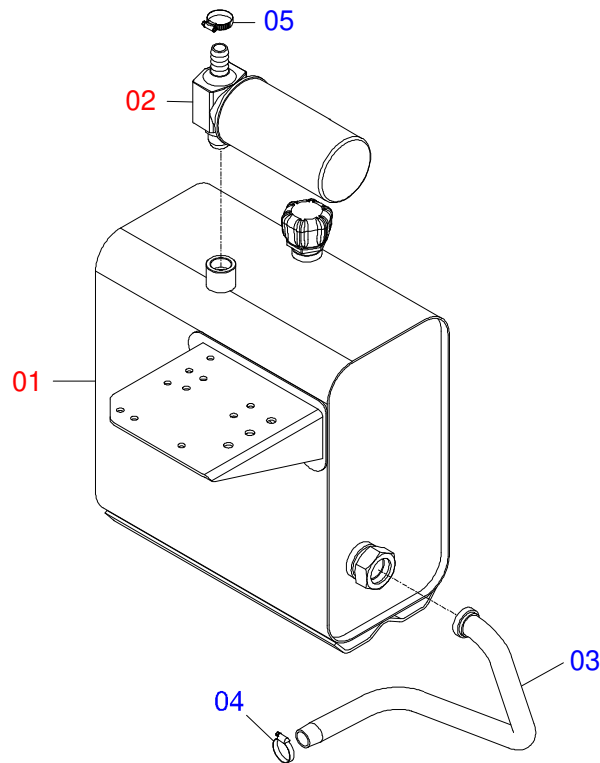
FEMALE QUICK COUPLER



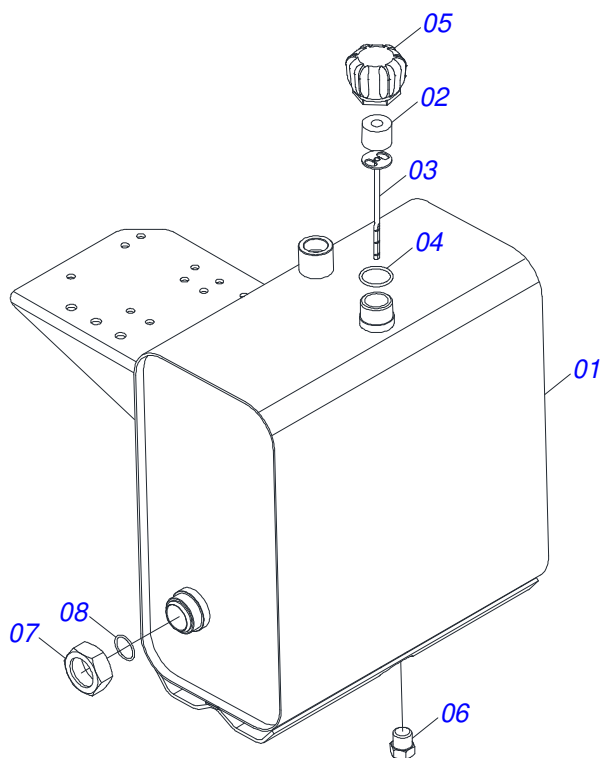
Item	Code	Description	See page	QT
01	0503011883	QUICK CONNECTION COVER		01
02	0503011628	FEMALE QUICK COUPLER		01



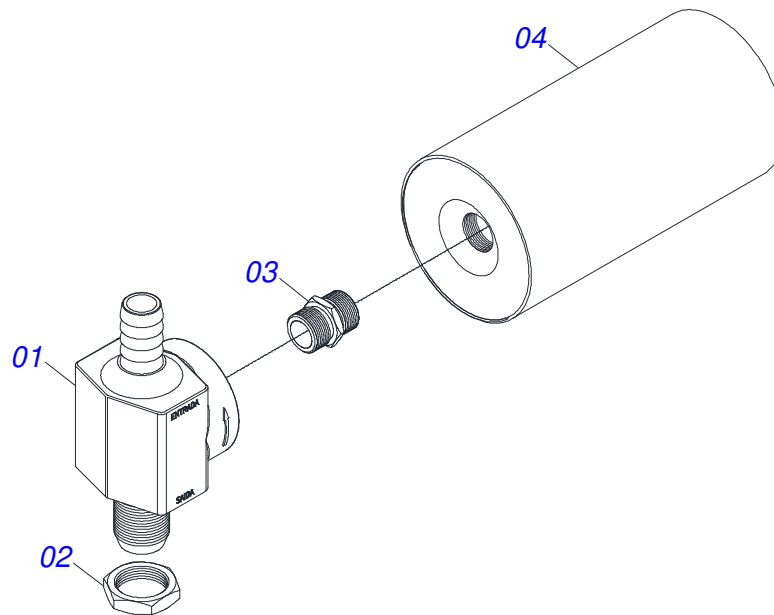
Item	Code	Description	See page	QT
01	0909094854	OIL RESERVOIR AND COMPONENTS	12	01
02	0909094860	FRAME AND COMPONENTS	15	01
03	0909094856	TRIPLE COMMAND SET 1/2	17	01
04	0909094859	PUMP AND COMPLEMENTS	20	01
05	0511057490	SHT HOSE SET	22	01
06	0501047852	COMPLETE CONTROLLER	19	03
07	0511010153	2-5/16" FIXED WRENCH		01
08	0501068213	5/8" WRENCH DOUBLE		01
09	0511031802	PACKED PARTS		01
10	0511064563	HOSE PROTECTION		01



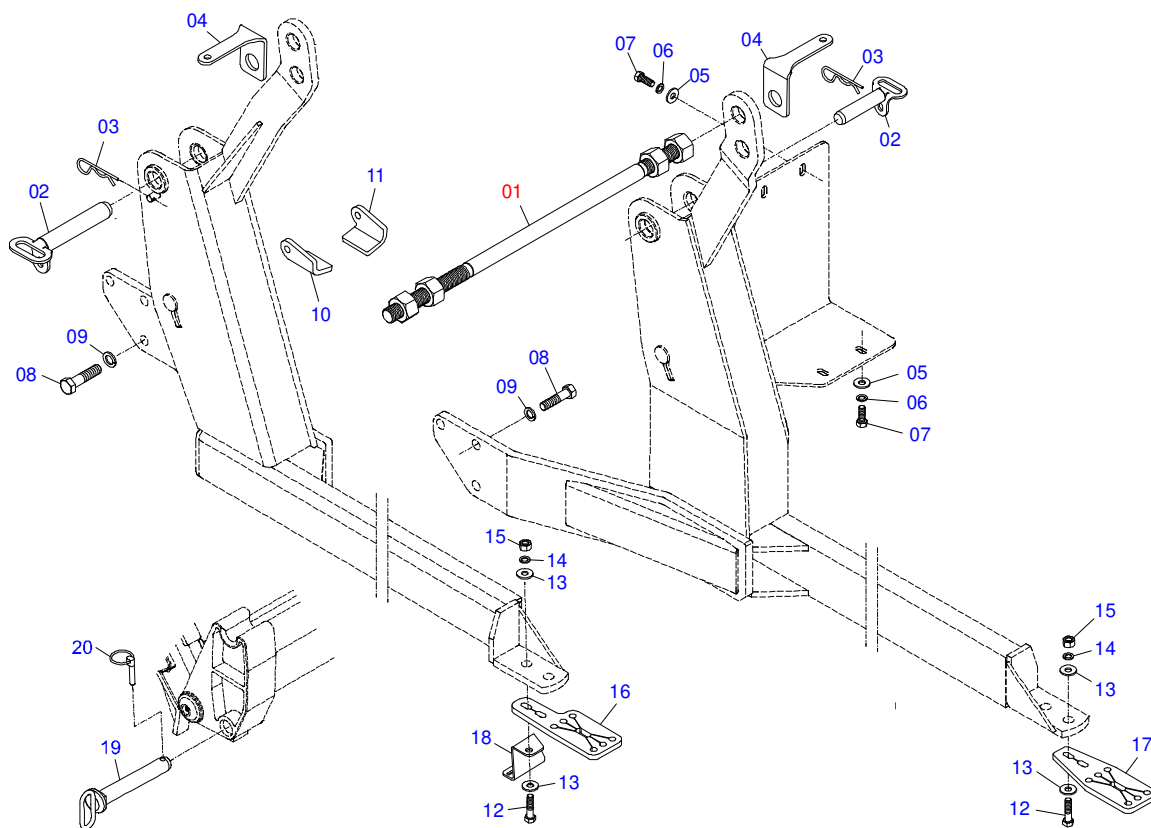
Item	Code	Description	See page	QT
01	0501047575	OIL RESERVOIR ASSY	13	01
02	0501041108	RETURNING FILTER ASSY	14	01
03	0521061677	TANK SUCTION DUCT - PCA/PD		01
04	0503010243	CLAMP		01
05	0503010184	CLAMP		01



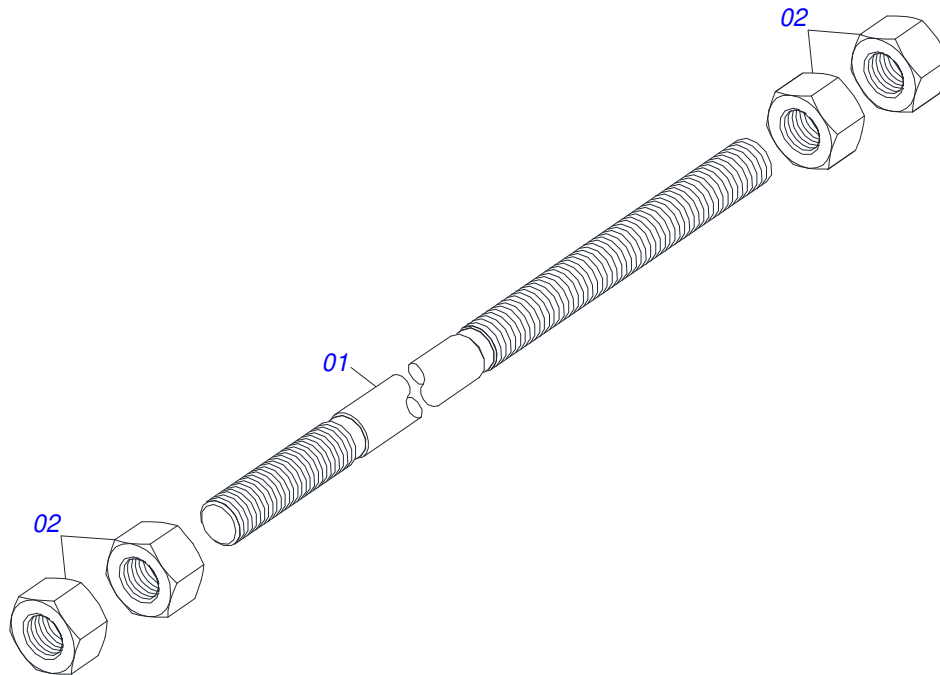
Item	Code	Description	See page	QT
01	0501068685	OIL RESERVOIR		01
02	0503030044	FILTERING ELEMENT		01
03	0501060975	OIL GAGE		01
04	0503010185	2-221 N 3006-9B O'RING		01
05	0502020472	FRONTAL COVER		01
06	0503031604	1/2" BSP PLUG		01
07	0501016309	2" 1X 2.5/16" NUT		01
08	0503010046	2-216 N 3006-9B O'RING		01



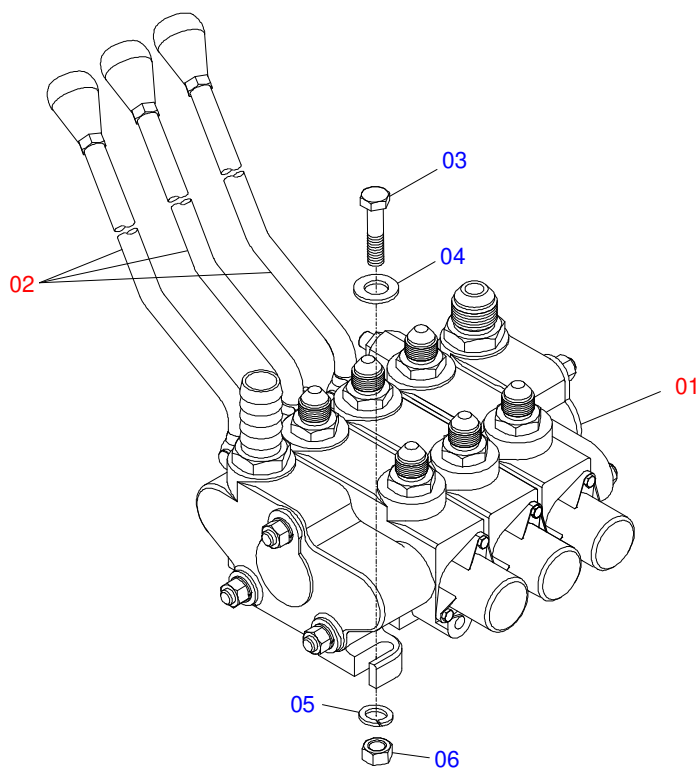
Item	Code	Description	See page	QT
01	0502050002	RETURNING FILTER HEAD		01
02	0501010594	1" NUT		01
03	0501010595	1" NF NIPPLE FITTING		01
04	0503010183	RETURNING FILTER		01



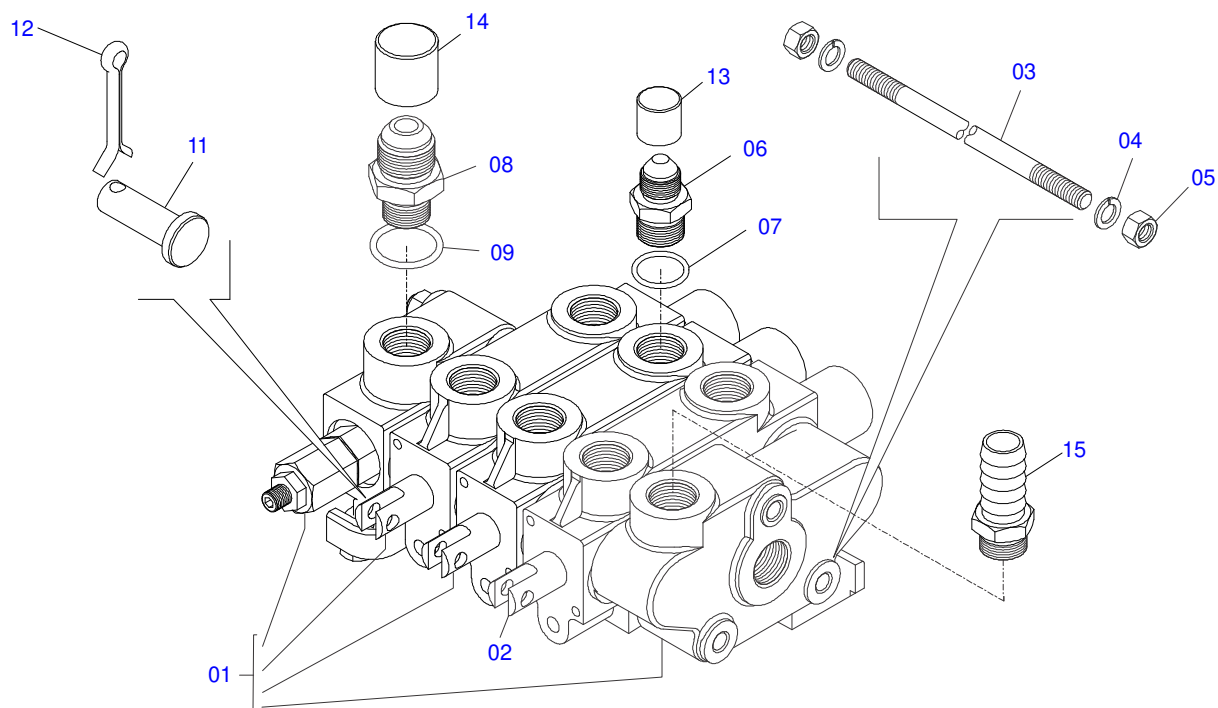
Item	Code	Description	See page	QT
01	0501041849	ASSY 1.1/4 NC X 910 ROD	16	01
02	0521061682	AXLE FIXER		02
03	0503030012	HITCH PIN CLIP		02
04	0561010051	HEADLIGHT SUPPORT		06
05	0511017302	FLAT WASHER		04
06	0503010019	1/2" SPRING WASHER		04
07	0501010161	1/2" X 1.1/4" BOLT		02
08	0501010098	3/4" UNC BOLT		06
09	0503010023	3/4" SPRING WASHER		06
10	0561016542	LEFT SCOUT		01
11	0561016541	RIGHT SCOUT		01
12	0501010500	3/4"X3"BOLT		04
13	0501010322	FLAT WASHER		08
14	0503010023	3/4" SPRING WASHER		04
15	0503010014	3/4" NUT		04
16	0571013046	BRACKET		01
17	0561016408	FRAME BRACKET		01
18	0561016418	SUPPORT TANK OIL		01
19	0521063680	HITCH PIN (185)		02
20	0503030430	7/16 X 2" PIN LOCK		02



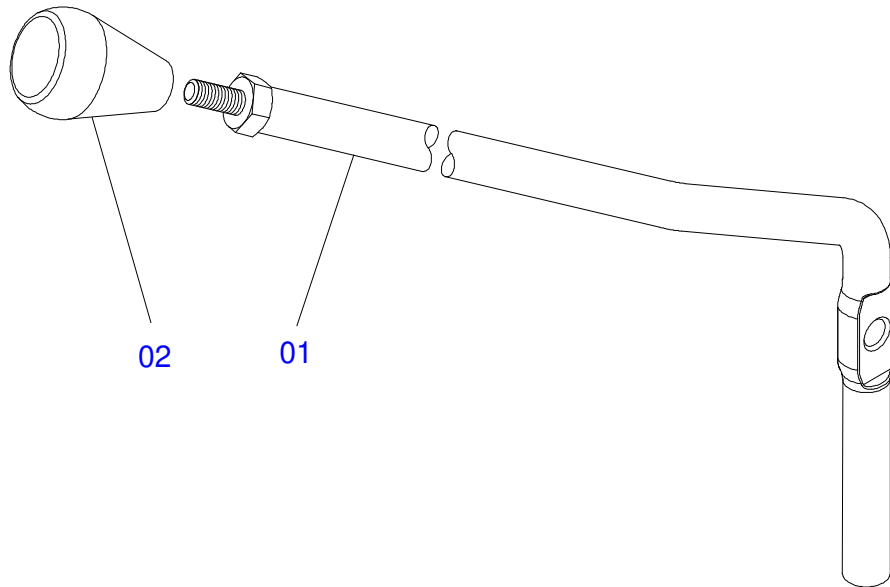
Item	Code	Description	See page	QT
01	0501014914	1.1/4" X 910 ROD		01
02	0501010087	1.1/4" NUT		04



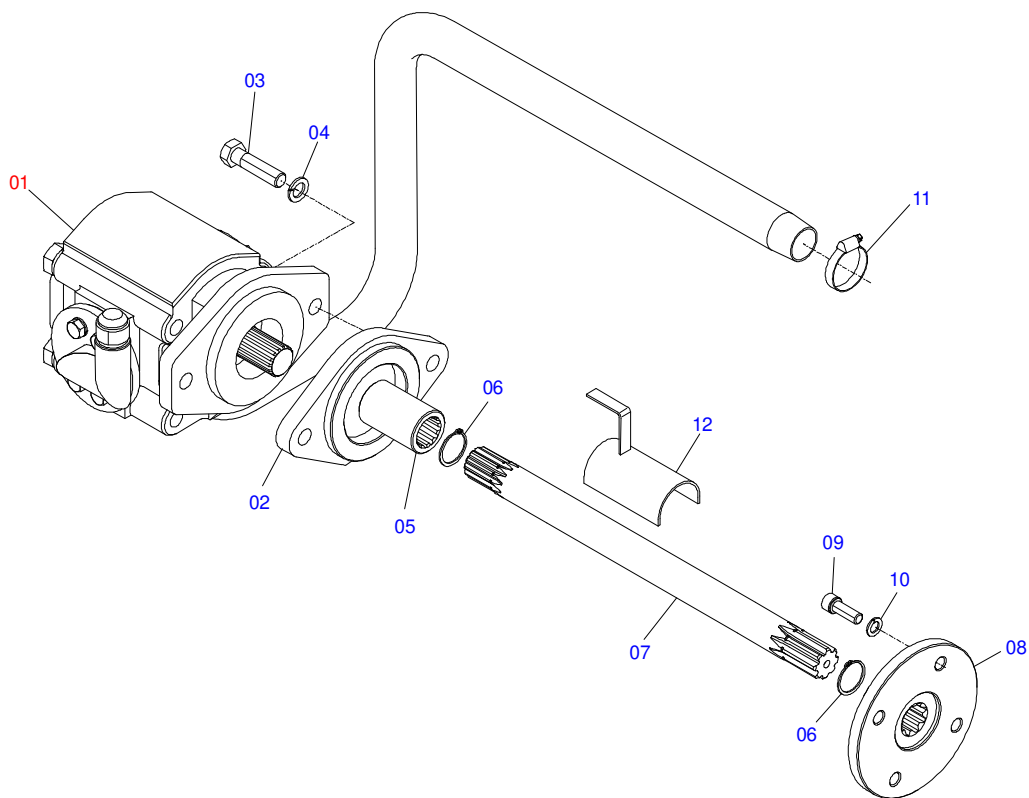
Item	Code	Description	See page	QT
01	0501048918	1/2 FULL TRIPLE COMMAND - HIDROV/DANFOSS	18	01
02	0501047852	COMPLETE CONTROLLER	19	03
03	0501010080	3/8" BOLT		03
04	0501010984	FLAT WASHER		03
05	0503010025	3/8" SPRING WASHER		03
06	0503010026	3/8" NUT		03



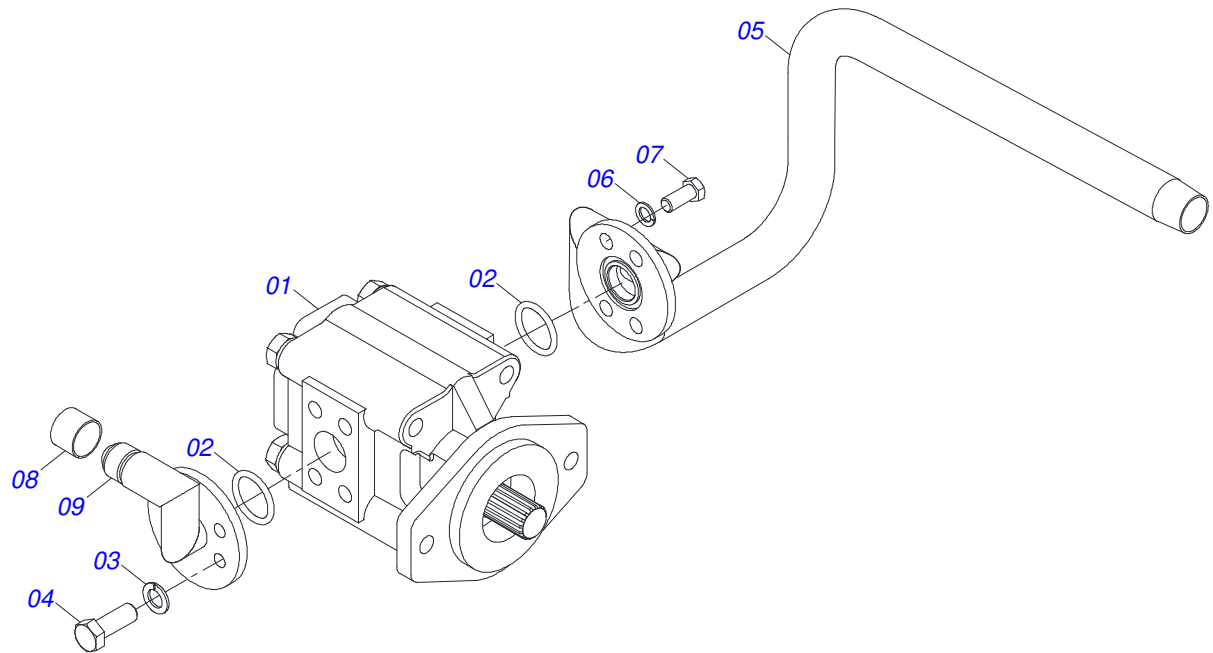
Item	Code	Description	See page	QT
01	0503060016	1/2"DOUBLE COMMAND	01	01
02	0503010465	BODY CENTRAL 1/2"	01	01
03	0501016988	3/8" X 3/8" X 10.6" STUD	03	03
04	0503011443	3/8" SPRING WASHER	06	06
05	0503010026	3/8" NUT	06	06
06	0501010590	NIPPLE	06	06
07	0503010045	O'RING	06	06
08	0501010589	R. 1.1/16UN SEXT 1.1/4 X 52 NIPPLE	01	01
09	0503011109	2-119 N 3006-9B O'RING	01	01
10	0503011109	2-119 N 3006-9B O'RING	01	01
11	0521010533	0.3" X 1" COUPLING SHAFT	03	03
12	0503010140	1/8" X 3/4" COTTERPIN	03	03
13	0503030387	PLUG	06	06
14	0503030388	PLUG N-005	01	01
15	0501010591	HOSE NIPPLE	01	01



Item	Code	Description	See page	QT
01	0501069069	CONTROL VALVE (V 985-4/AX 4.75)		01
02	0503030878	LEVER CRANK		01

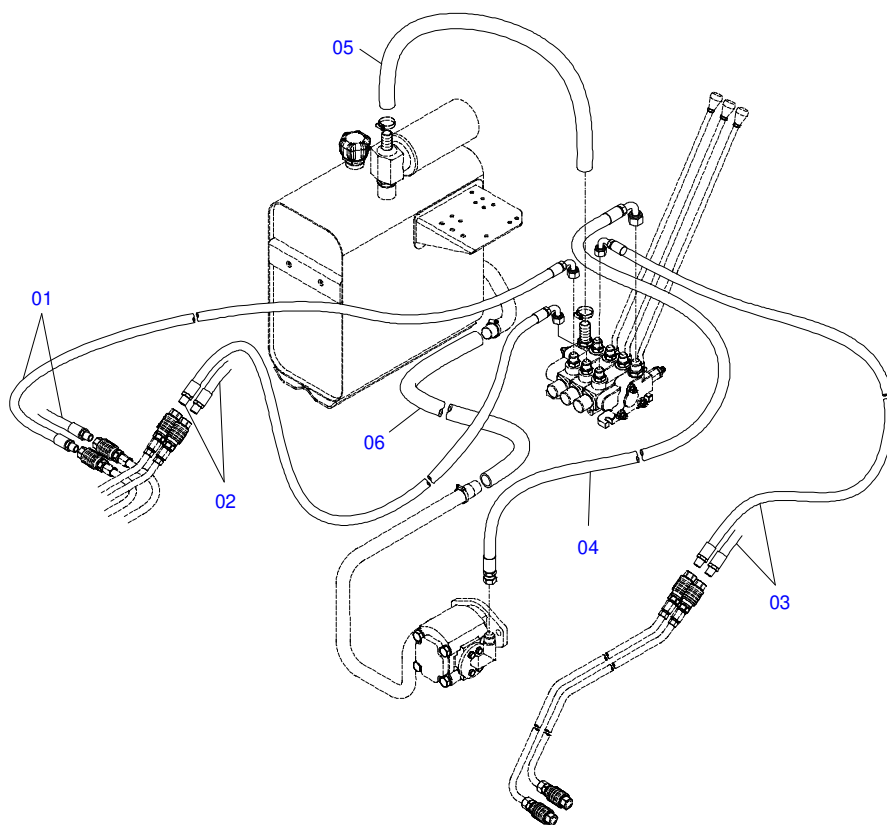


Item	Code	Description	See page	QT
01	0501059935	PUMP WITH SUCTION AND PRESSURE DUCTS	21	01
02	0521012242	SUPPORT ADAPTER		01
03	0503011172	BOLT 1/2 UNC X 2.1/2 C S G.5 ZN		02
04	0503010019	1/2" SPRING WASHER		02
05	0503030838	1-1/8" X 2.4" SLEEVE		01
06	0503010174	501028 CLAMPING RING (FOR AXLE)		01
07	0501057540	AXIS 385 X 1.1/8 EST1.1/8-30G WITH RING		01
08	0561016816	120 X 50 ESTR 1.1/8" - COUPLING FLANGE		01
09	0503010119	7/16" X 1-1/4" BOLT		04
10	0503010025	3/8" SPRING WASHER		04
11	0503010243	CLAMP		01
12	0511064563	HOSE PROTECTION		01



Item	Code	Description	See page	QT
01	0503061770	PUMP WITH TUBE		01
02	0503010173	2-220 N 3006-9B O'RING		02
03	0503010025	3/8" SPRING WASHER		04
04	0503011087	3/8" X 1" BOLT		04
05	0521061552	PUMP SUCTION DUCT - MF 4292/4283-4		01
06	0503010180	7/16" SPRING WASHER		04
07	0503010355	7/16" X 1" BOLT		04
08	0503030388	PLUG N-005		01
09	0501069661	PUMP PRESSURE TUBE		01

SHT HOSE SET



Item	Code	Description	See page	QT
01	0501080376	1/2 X 1300 HOSE TC-TM		02
02	0501080796	1/2" X 1400 TC-TM HOSE		02
03	0501080142	1/2 X 2900 TC-TM HOSE		02
04	0501080638	3/4 X 3200 TR-TC HOSE		01
05	0501013378	1' X 25.59" HOSE CLAMP		01
06	0511010498	HOSE CLAMP 1.1/4" X 72.83"		01



MARCHESAN

Technical Publications | Elaboration and Revision

JOÃO VIRGINIO ROCHA

www.marchesan.com.br

