

HINGE TYPE OFFSET DISK HARROW

GNFM/E - 156D - PA

Code: 0501092000
Series: S-0816
Revision: 00
Date Revision: JUNHO/2022

PARTS CATALOGUE



MARCHESAN



PRODUCTS

Code	Description	
0102330331	GNFME 156 X 22 X 4,5 DM MT PA	S-0816

ATTENTION: IMPORTANT

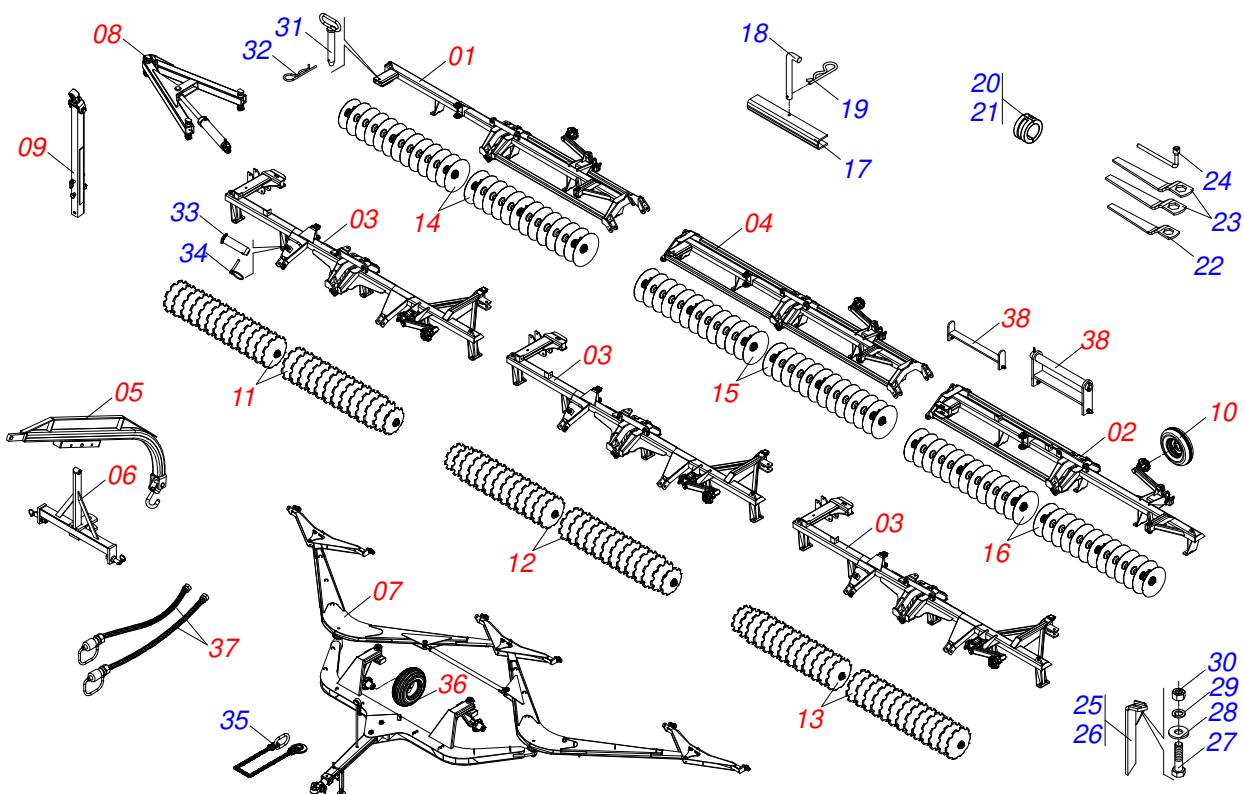
Marchesan S.A. reserves the right to improve and/or modify the technical features of its products, without obligation to do the same with those products already sold and without prior knowledge of the dealer or the consumer. The photos are only illustrative.



MARCHESAN

INDEX

0909093523	FRAME ASSY	1
0521047300	ASSY RIGHT REAR FRAME	2
0521047301	ASSY LEFT REAR FRAME	3
0521047302	ASSY FRAME FRONT RIGHT / LEFT	4
0521047323	ASSY INTERNAL REAR FRAME	5
0521050970	ASSY WHEEL	6
0511050078	WHEEL WITH HUB	7
0501051142	CARRYING WHEEL HUB	8
0521042072	FRAME ASSY	9
0501053527	HEADER WITH EAR HITCH	10
0909093526	TRACTION ASSY OF	11
0521050977	DOUBLE HEADER	12
0501058791	STUB SHAFT & HUB ASSY	13
0521043351	FULL DRAW BAR	14
0521044665	FULL EXTENSOR	15
0521050969	1400 ASSY TRACTION BAR	16
0511048088	DRAWBAR JACK	17
0503060244	WHEEL WITH TIRE 11L-15 10L 8F ASSY	18
0503060091	L29.5"X0.63"-10L WHEEL AND	19
0909093527	OPENING ASSY	20
0909093529	RIGHT FRONT SECTION	21
0909093530	CENTRAL FRONT SECTION	22
0909093531	LEFT FRONT SECTION	23
0909093532	REAR RIGHT SECTION	24
0909093533	CENTRAL REAR SECTION	25
0909093534	LEFT REAR SECTION	26
0909091729	HYDRAULIC CIRCUIT	27
0501053835	FEMALE QUICK COUPLER	28
0501053834	MALE QUICK COUPLER	29
0531051570	SET FOR LONGITUDINAL TRANSPORT	30



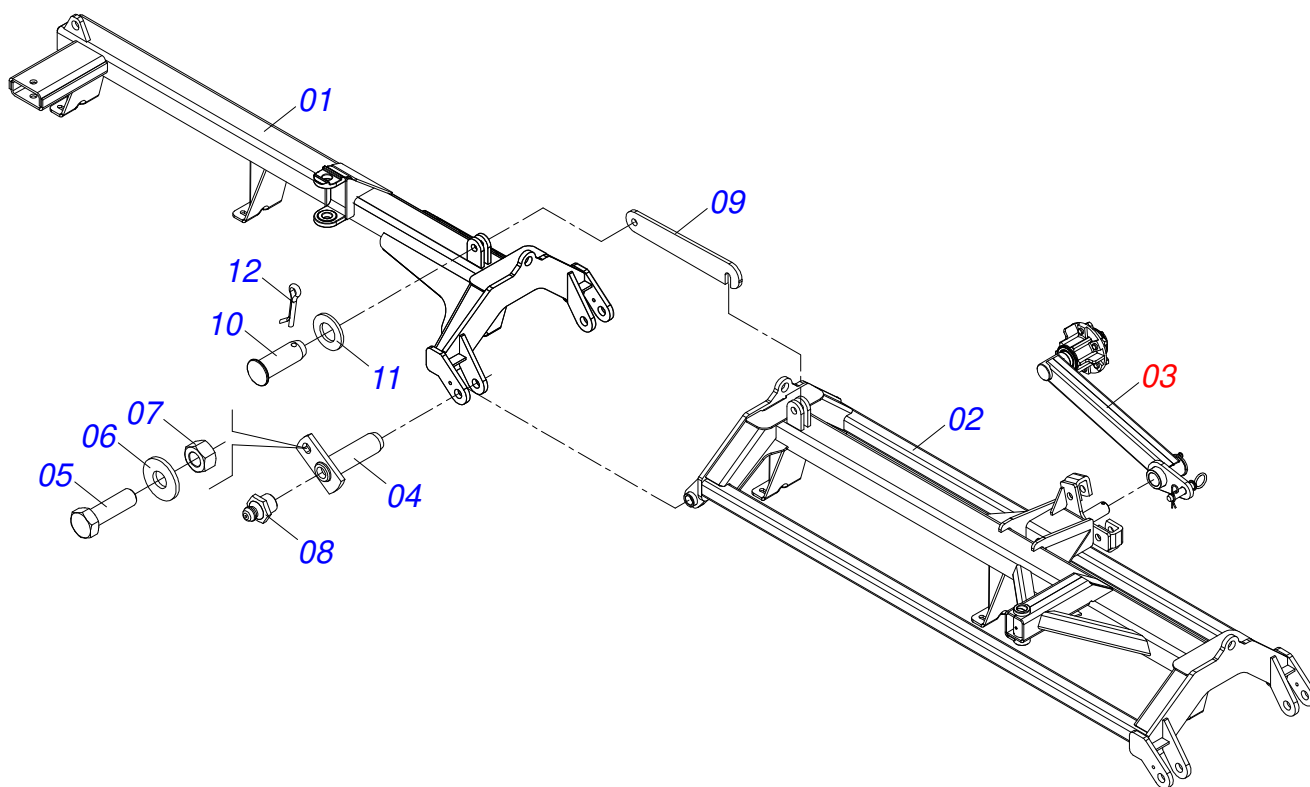
Item	Code	Description	See page	QT
01	0521047300	ASSY RIGHT REAR FRAME	2	01
02	0521047301	ASSY LEFT REAR FRAME	3	01
03	0521047302	ASSY FRAME FRONT RIGHT / LEFT	4	03
04	0521047323	ASSY INTERNAL REAR FRAME	5	01
05	0521042072	FRAME ASSY	9	01
06	0501053527	HEADER WITH EAR HITCH	10	01
07	0909093526	TRACTION ASSY OF	11	01
08	0909093527	OPENING ASSY	20	03
09	0521050969	1400 ASSY TRACTION BAR	16	03
10	0503060091	L29.5"X0.63"-10L WHEEL AND	19	06
11	0909093529	RIGHT FRONT SECTION	21	01
12	0909093530	CENTRAL FRONT SECTION	22	01
13	0909093531	LEFT FRONT SECTION	23	01
14	0909093532	REAR RIGHT SECTION	24	01
15	0909093533	CENTRAL REAR SECTION	25	01
16	0909093534	LEFT REAR SECTION	26	01
17	0561018173	LOCK FOR TRANSPORT		03
18	0541016844	FIXER LOCK		03
19	0503030168	HITCH PIN CLIP		03
20	0501047895	ROD STOP		18
21	0501047885	ROD STOP		12
22	0511018451	5/8" X 3/4" X 1" UNIVERSAL		01
23	0501011432	1-1/2" AND 1-5/8 GANG BOLT WRENCH		02
24	0501068273	5/8" WRENCH		01
25	0501063962	REAR SCRAPER		57
26	0501063963	FRONT SCRAPER		59
27	0503011082	C1/2" X 1.3/4" SCREW		232
28	0511017302	FLAT WASHER		232
29	0503010019	1/2" SPRING WASHER		232
30	0503010060	1/2" NUT		232
31	0501075403	HITCH PIN		03



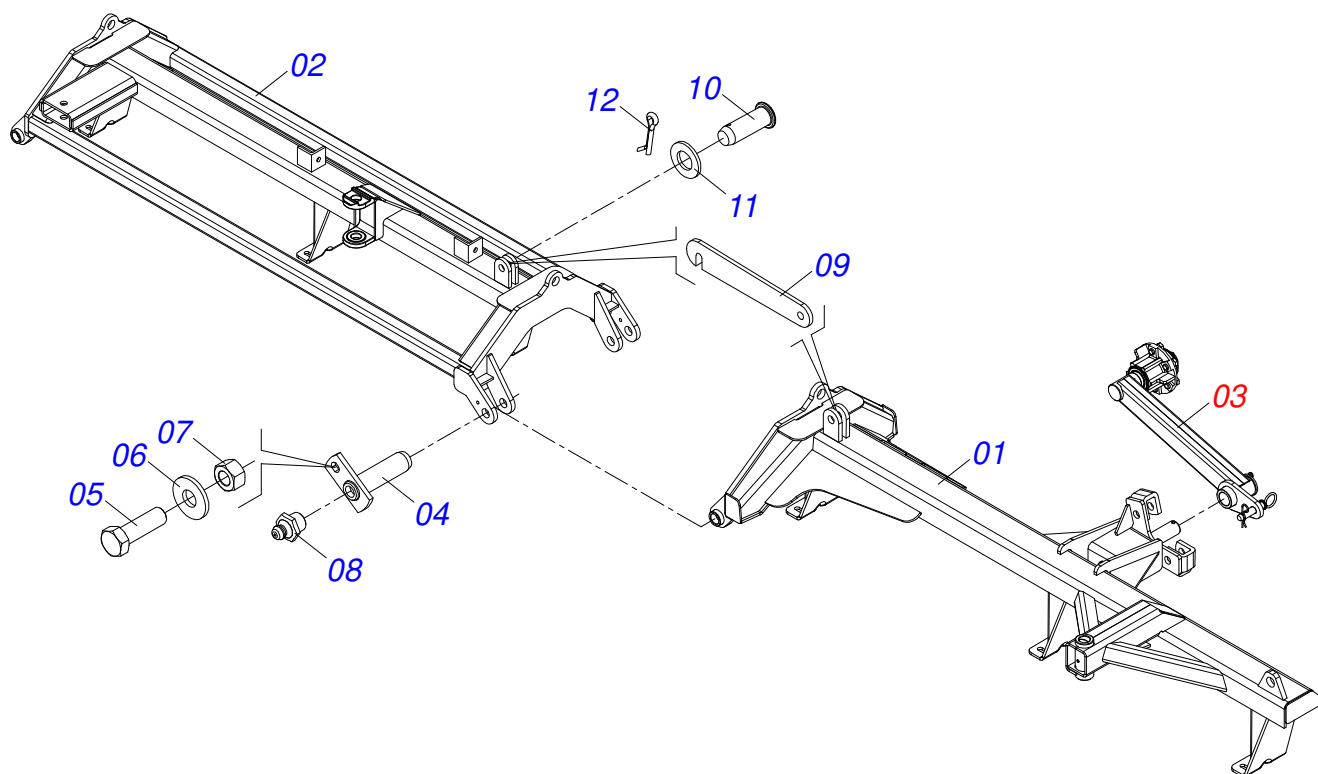
FRAME ASSY

0909093523

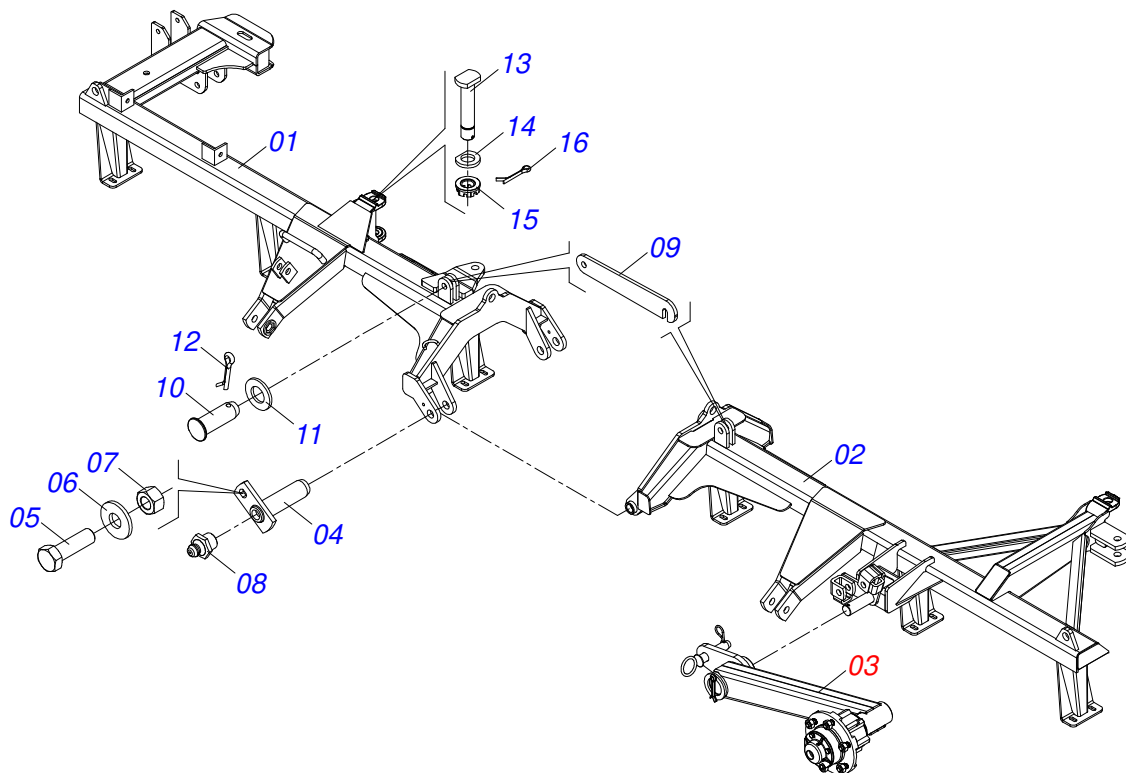
Item	Code	Description	See page	QT
32	0503030012	HITCH PIN CLIP		07
33	0501019002	JUNCTION SHAFT		03
34	0503030085	LOCK PIN		03
35	0503013150	1300 X 3/8 CHAIN		01
36	0503060244	WHEEL WITH TIRE11L-15 10L 8F ASSY	18	02
37	0909091729	HYDRAULIC CIRCUIT	27	01
38	0531051570	SET FOR LONGITUDINAL TRANSPORT	30	01



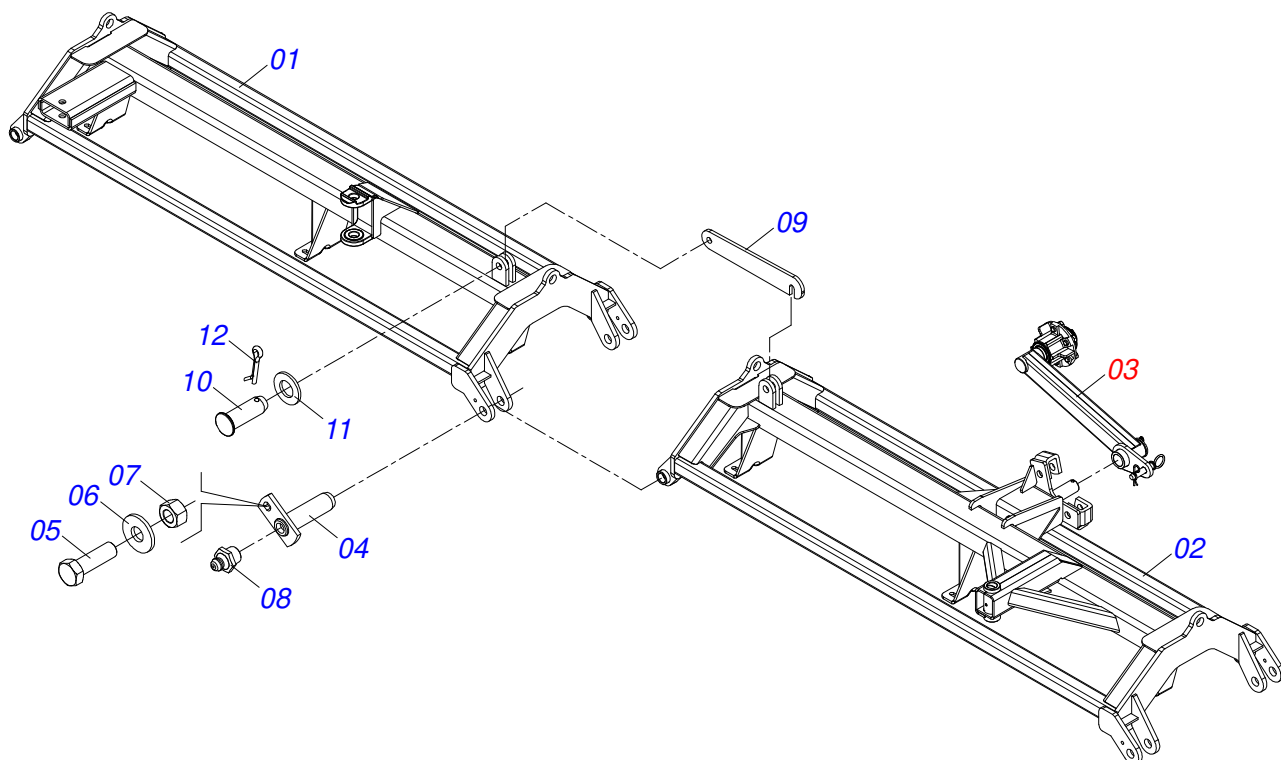
Item	Code	Description	See page	QT
01	0521067667	RIGHT REAR FRAME		01
02	0521067666	REAR FRAME INTERNAL RIGHT		01
03	0521050970	ASSY WHEEL	6	01
04	0501063751	1.5" X 5.5" PIVOT SHAFT		02
05	0501010100	SCREW 5/8 UNC X 2 CS G.5 ZN		02
06	0501012140	FLAT WASHER		02
07	0503010013	5/8" NUT		02
08	0503010002	1800 GREASE FITTING		03
09	0501018941	TRANSPORT LOCK		01
10	0521010592	1.1" X 3.1" COUPLING SHAFT		02
11	0511017480	FLAT WASHER		02
12	0503010571	1/4" X 1.1/2 COTTERPIN		02



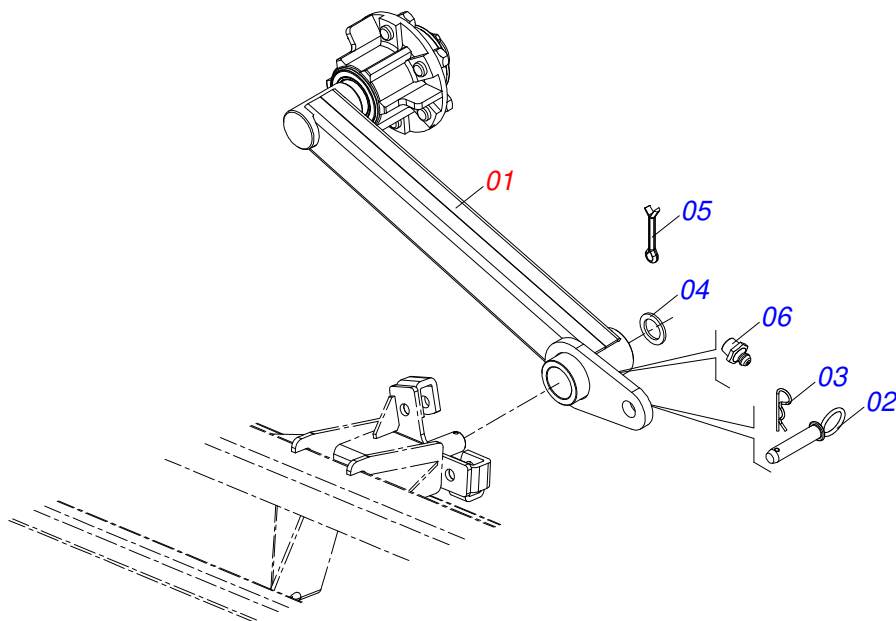
Item	Code	Description	See page	QT
01	0521067663	LEFT REAR FRAME		01
02	0521067665	LEFT INTERNAL REAR CHASSIS		01
03	0521050970	ASSY WHEEL	6	01
04	0501063751	1.5" X 5.5" PIVOT SHAFT		02
05	0501010100	SCREW 5/8 UNC X 2 CS G.5 ZN		02
06	0501012140	FLAT WASHER		02
07	0503010013	5/8" NUT		02
08	0503010002	1800 GREASE FITTING		03
09	0501018941	TRANSPORT LOCK		01
10	0521010592	1.1" X 3.1" COUPLING SHAFT		02
11	0511017480	FLAT WASHER		02
12	0503010571	1/4" X 1.1/2 COTTERPIN		02



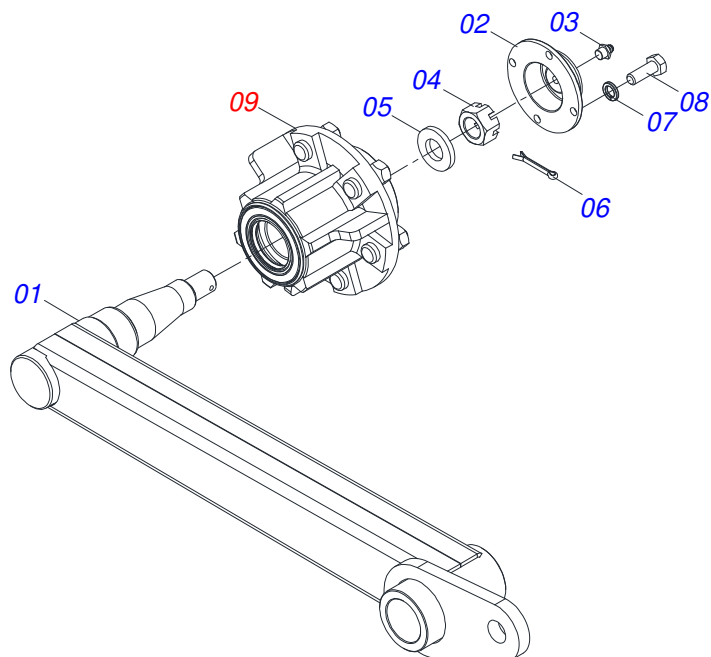
Item	Code	Description	See page	QT
01	0521067653	FRAME FRONT RIGHT		01
02	0521067669	FRAME FRONT LEFT		01
03	0521050970	ASSY WHEEL	6	01
04	0501063751	1.5" X 5.5" PIVOT SHAFT		02
05	0501010100	SCREW 5/8 UNC X 2 CS G.5 ZN		02
06	0501012140	FLAT WASHER		02
07	0503010013	5/8" NUT		02
08	0503010002	1800 GREASE FITTING		02
09	0501018941	TRANSPORT LOCK		01
10	0521010592	1.1" X 3.1" COUPLING SHAFT		02
11	0511017480	FLAT WASHER		02
12	0503010571	1/4" X 1.1/2" COTTERPIN		02
13	0531019497	1.5" X 9.2" ARTICULATED AXIS		01
14	0501012916	FLAT WASHER 38,50 X 66 X 4,75 ZN		01
15	0501011301	1.1/2 UNC 6FPP 2.5/16 NUT		01
16	0503010010	1/4" X 2.1/2" COTTERPIN		01



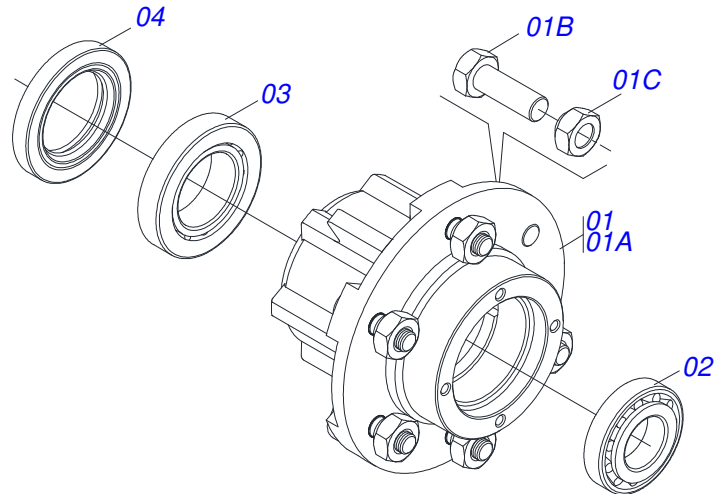
Item	Code	Description	See page	QT
001	0521067655	REAR FRAME INTERNAL RIGHT		01
002	0521067656	LEFT INTERNAL REAR FRAME		01
003	0521050970	ASSY WHEEL	6	01
004	0501063751	1.5" X 5.5" PIVOT SHAFT		02
005	0501010100	SCREW 5/8 UNC X 2 CS G.5 ZN		02
006	0501012140	FLAT WASHER		02
007	0503010013	5/8" NUT		02
008	0503010002	1800 GREASE FITTING		03
009	0501018941	TRANSPORT LOCK		01
010	0521010592	1.1" X 3.1" COUPLING SHAFT		02
011	0511017480	FLAT WASHER		02
012	0503010571	1/4" X 1.1/2 COTTERPIN		02



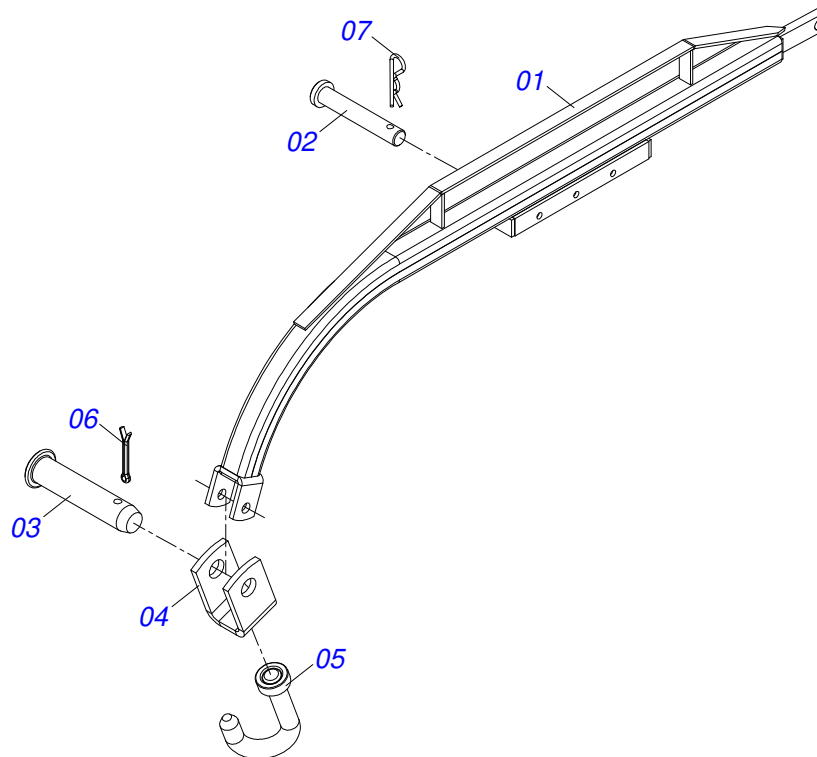
Item	Code	Description	See page	QT
001	0511050078	WHEEL WITH HUB	7	01
002	0501068992	0.9" X 4.5" COUPLING SHAFT		01
003	0503030012	HITCH PIN CLIP		01
004	0501015875	FLAT WASHER		01
005	0503010534	3/8 X 2-1/2 COTTERPIN		01
006	0503010002	1800 GREASE FITTING		01



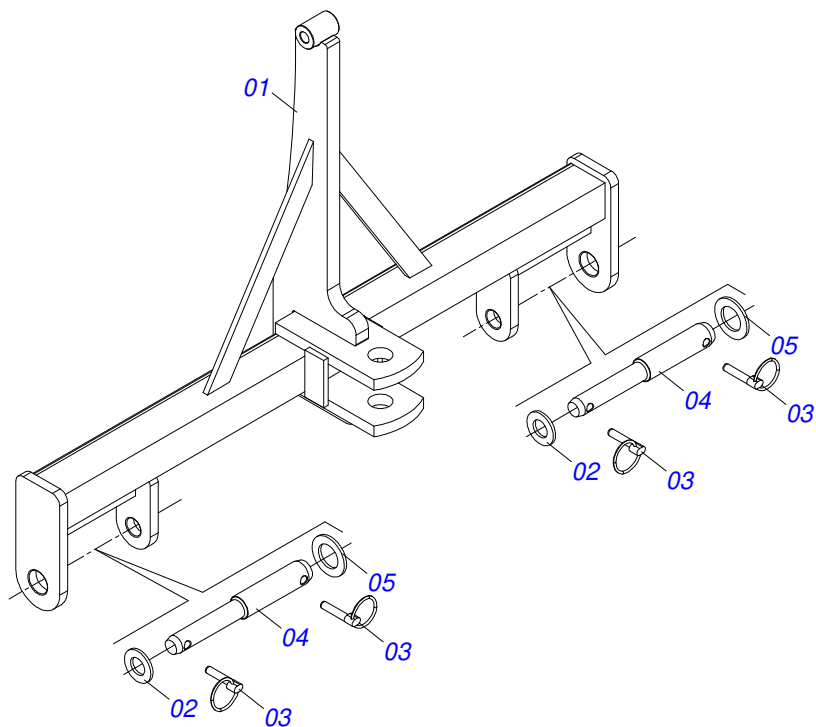
Item	Code	Description	See page	QT
01	0521061622	WHEEL SUPPORT		01
02	0502020591	PROTECCION COVER		01
03	0503010002	1800 GREASE FITTING		01
04	0503030009	1" CASTLE NUT		01
05	0501016545	FLAT WASHER		01
06	0503010018	5/32 X 1-1/2 COTTERPIN		01
07	0503011444	SPRING WASHER		04
08	0503010358	5/16" X 5/8" BOLT		04
09	0501051142	CARRYING WHEEL HUB	8	01



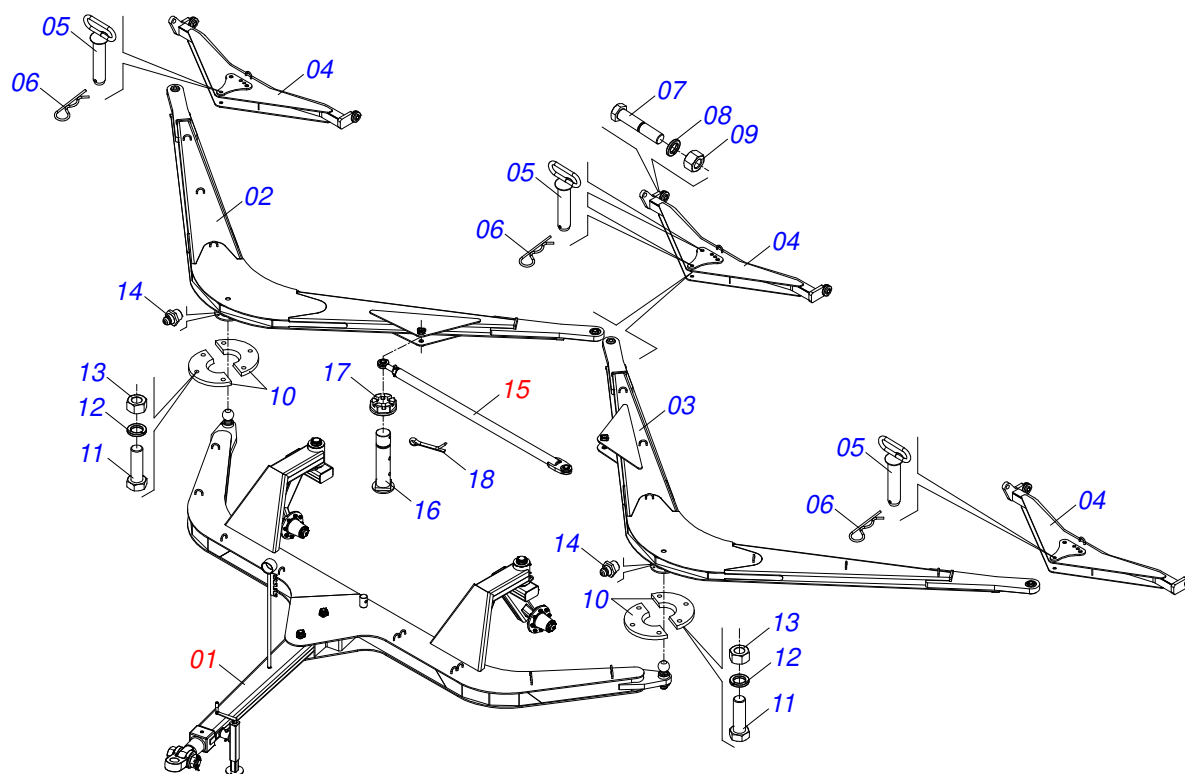
Item	Code	Description	See page	QT
01	0501110728	WHEEL HUB		01
01A	0502011121	CARRYING WHEEL HUB		01
01B	0501010127	9/16" X 1-7/8" LUG BOLT		06
01C	0503010035	9/16" CONIC NUT		06
02	0503010037	30207 ROLLER BEARING		01
03	0503010006	32210 ROLLER BEARING		01
04	0503012928	SEAL		01



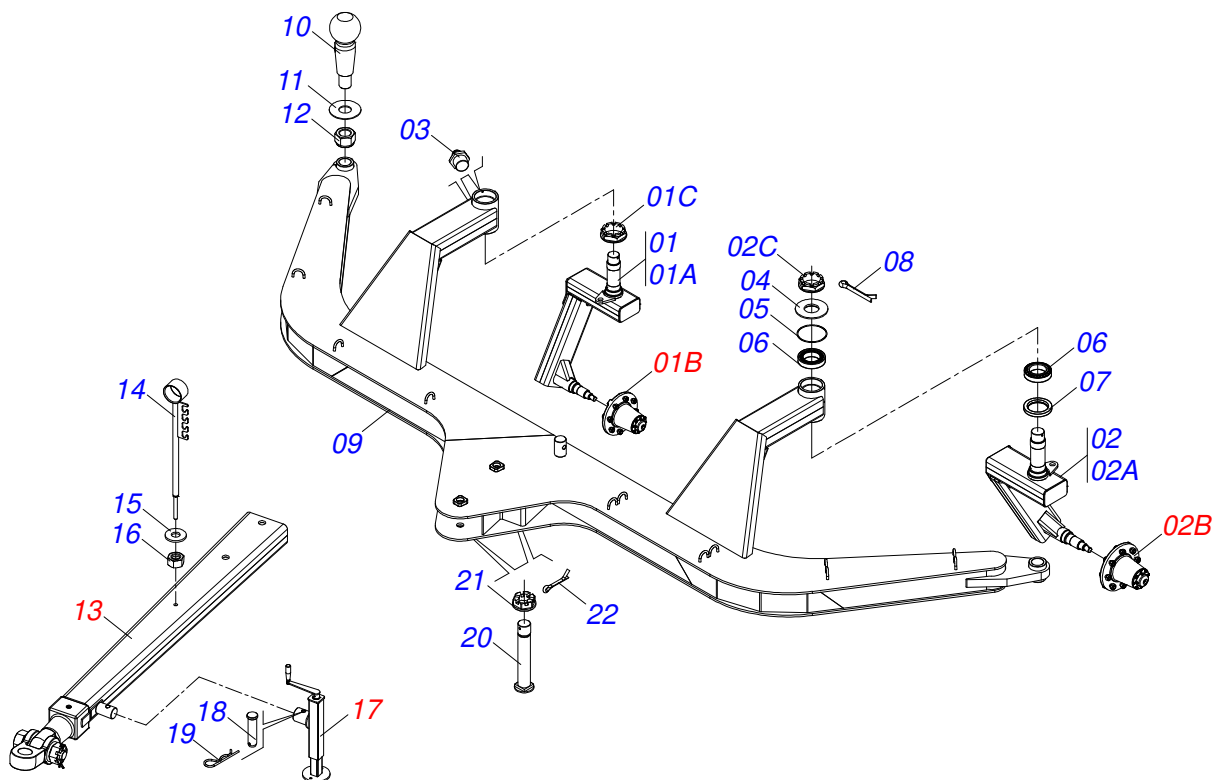
Item	Code	Description	See page	QT
01	0501062595	FRAME GAT 800		01
02	0501011388	COUPLING SHAFT		01
03	0521010579	COUPLING SHAFT		01
04	0511016686	U HOOK		01
05	0501067537	25,4 X 100 HOOK		01
06	0503010018	5/32 X 1-1/2 COTTERPIN		01
07	0503030168	HITCH PIN CLIP		01



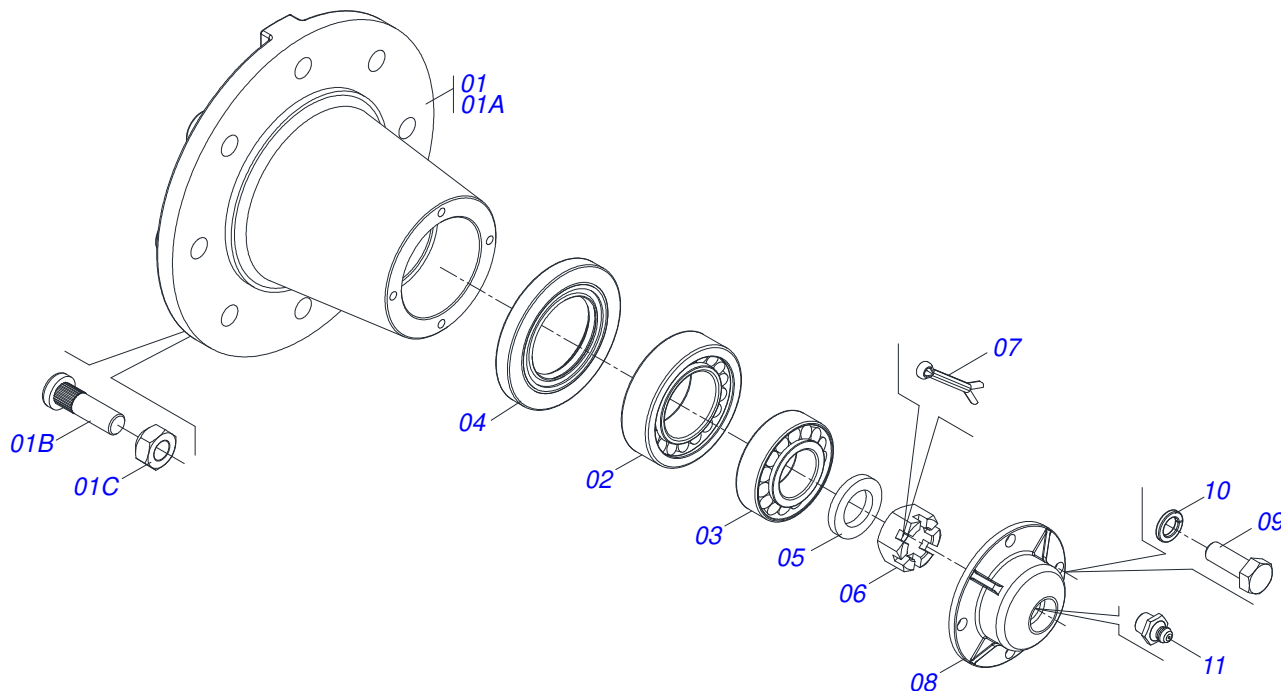
Item	Code	Description	See page	QT
01	0511062944	DRAWBAR		01
02	0501012916	FLAT WASHER 38,50 X 66 X 4,75 ZN		02
03	0503030430	7/16 X 2" PIN LOCK		04
04	0541015542	1.1/8" HITCH AXLE		02
05	0511017480	FLAT WASHER		02



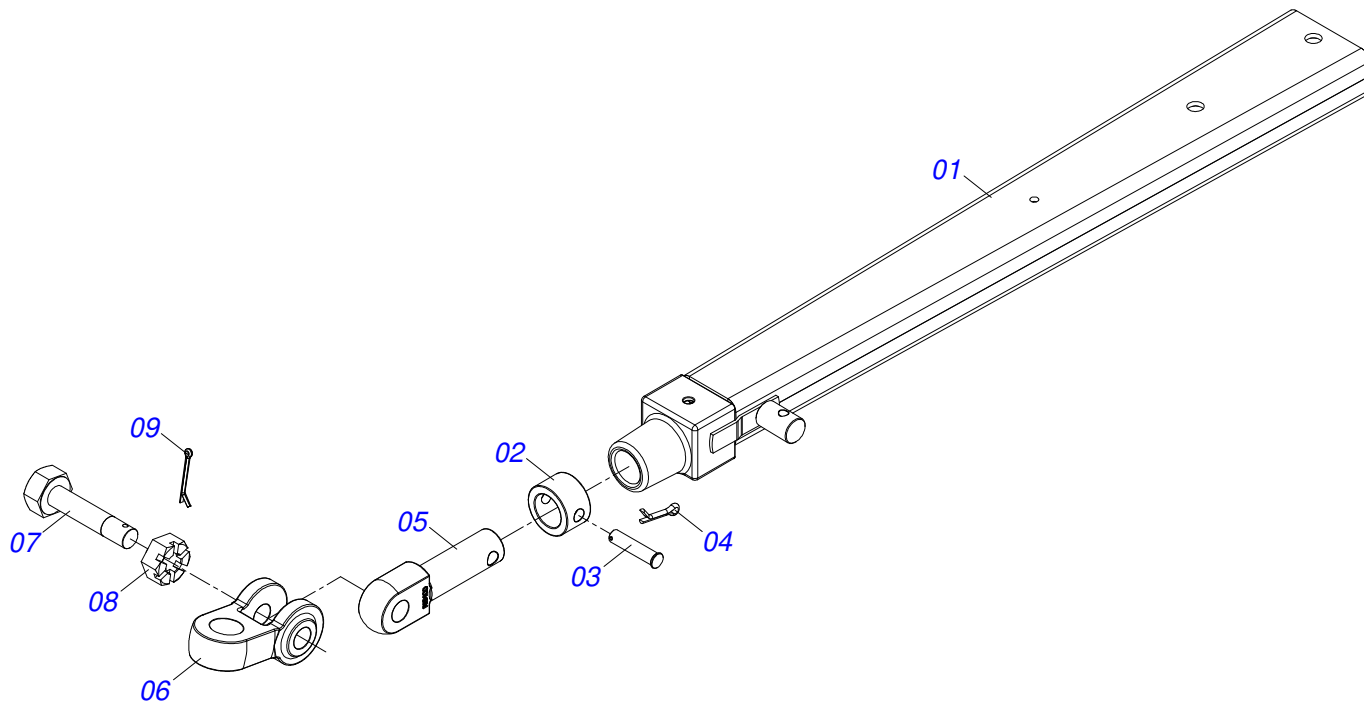
Item	Code	Description	See page	QT
01	0521050977	DOUBLE HEADER	12	01
02	0521067659	RIGHT HITCH BAR		01
03	0521067658	HITCH LEFT BAR		01
04	0521065186	HITCH BAR		03
05	0511062895	31,75 X 150 COUPLING SHAFT		04
06	0503030012	HITCH PIN CLIP		04
07	0501010426	1-1/4" X 6" SCREW		06
08	0503010070	SPRING WASHER		06
09	0501010087	1.1/4" NUT		06
10	0551016939	FLANGE BI-LEAVING		04
11	0501010100	SCREW 5/8 UNC X 2 CS G.5 ZN		12
12	0503010027	5/8" SPRING WASHER		12
13	0503010013	5/8" NUT		12
14	0503010002	1800 GREASE FITTING		02
15	0521044665	FULL EXTENSOR	15	01
16	0571012612	PIVOT SHAFT		02
17	0501011301	1.1/2 UNC 6FPP 2.5/16 NUT		02
18	0503010010	1/4" X 2.1/2" COTTERPIN		02



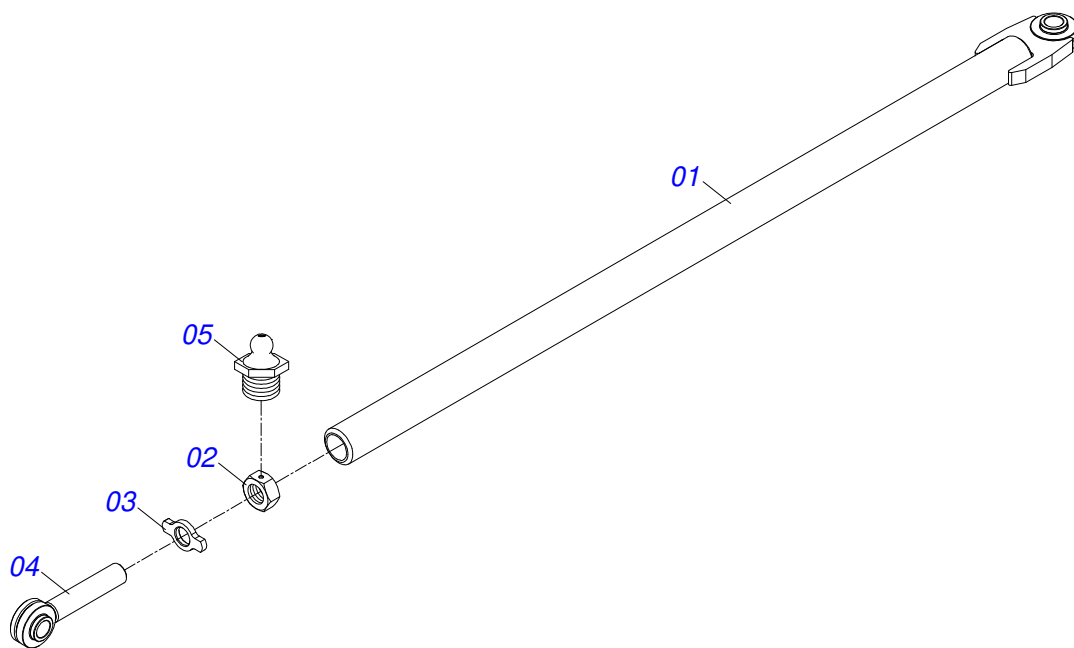
Item	Code	Description	See page	QT
01	0511054563	RIGHT WHEEL ARM		01
01A	0521060221	RIGHT CARRYING-WHEELS SUPPORT		01
01B	0501058791	STUB SHAFT & HUB ASSY	13	01
01C	0502040080	FLANGE NUT R.2.1/2 UN		01
02	0511054564	LEFT WHEEL ARM		01
02A	0521060219	LEFT CARRYING-WHEELS SUPPORT		01
02B	0501058791	STUB SHAFT & HUB ASSY	13	01
02C	0502040080	FLANGE NUT R.2.1/2 UN		01
03	0503010002	1800 GREASE FITTING		04
04	0541016926	HUB COVER		02
05	0503012314	2-248 1G05195 O'RING		02
06	0503010059	33287/33462 ROLLER BEARING		04
07	0503010050	SEAL 00085-B		02
08	0503010073	3/8 X 3-1/2 COTTERPIN		02
09	0521067660	DOUBLE HEAD UNION BAR		01
10	0541015756	HITCH PIN MALE		02
11	0521011721	1.6" X 3.94" X 0.12" WASHER		02
12	0503010290	SELF ADJUSTING 1.1/2" UNF NUT		02
13	0521043351	FULL DRAW BAR	14	01
14	0521062849	HOSE HOLDER ASSY		01
15	0501010322	FLAT WASHER		01
16	0503010014	3/4" NUT		01
17	0511048088	DRAWBAR JACK	17	01
18	0561014251	COUPLING SHAFT		01
19	0503030168	HITCH PIN CLIP		01
20	0571013022	AXIS		02
21	0501011301	1.1/2 UNC 6FPP 2.5/16 NUT		02
22	0503010010	1/4" X 2.1/2" COTTERPIN		02



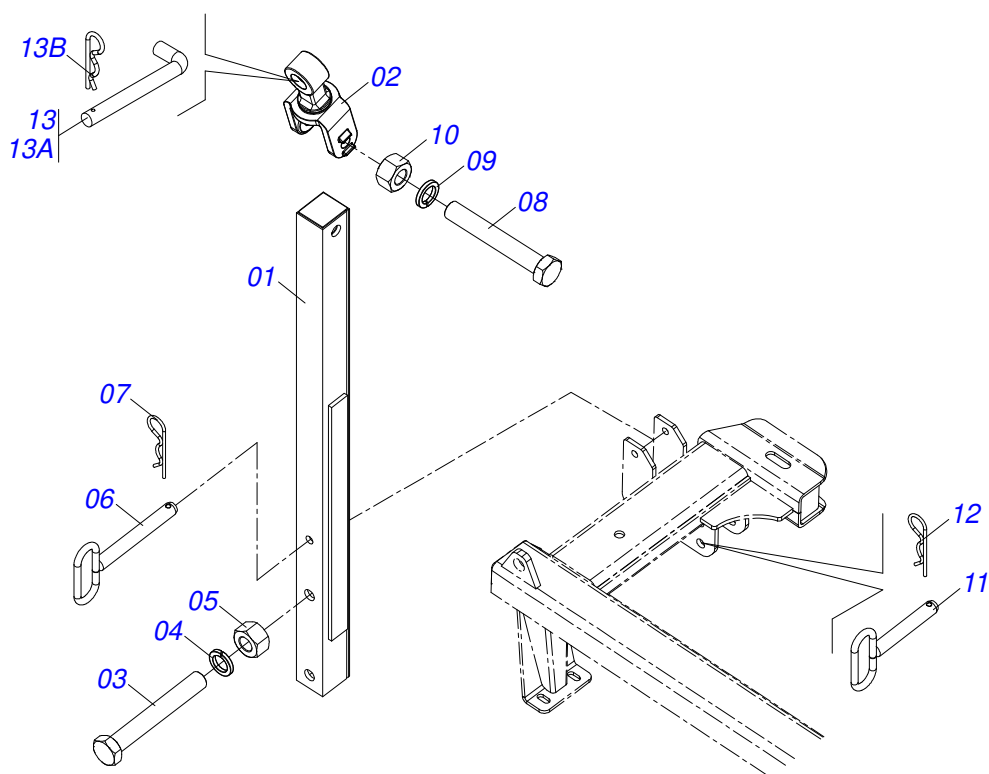
Item	Code	Description	See page	QT
01	0501110738	CARRYING WHEEL HUB		01
01A	0502012260	TRANSPORT WHEEL BOX		01
01B	0501010186	WHEEL SCREW 5/8UNF X 2.1/8CR		08
01C	0503010064	5/8 UNF CONIC NUT		08
02	0503010008	3780/3720 ROLLER BEARING		01
03	0503011156	ROLAMENTO 2780/2720 IMP		01
04	0503013314	RETAINER 5166-GB 63,5 X 110 X 13 ARCA		01
05	0511012492	FLAT WASHER		01
06	0503030009	1" CASTLE NUT		01
07	0503010018	5/32 X 1-1/2 COTTERPIN		01
08	0502020591	PROTECCION COVER		01
09	0503010358	5/16" X 5/8" BOLT		04
10	0503011444	SPRING WASHER		04
11	0503010002	1800 GREASE FITTING		01



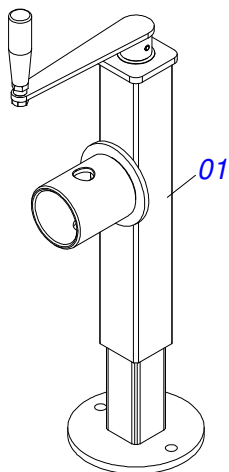
Item	Code	Description	See page	QT
01	0521064455	BAR		01
02	0502040263	ANEL TRAVA ENGATE		01
03	0561017306	COUPLING SHAFT		01
04	0503010523	1/4" X 2" COTTERPIN		01
05	1902040264	HITCH PIN		01
06	0502040849	U COUPLING		01
07	0511067199	2" BOLT		01
08	0502040558	2" CASTLE NUT		01
09	0503010074	3/8 X 0,15" COTTERPIN		01



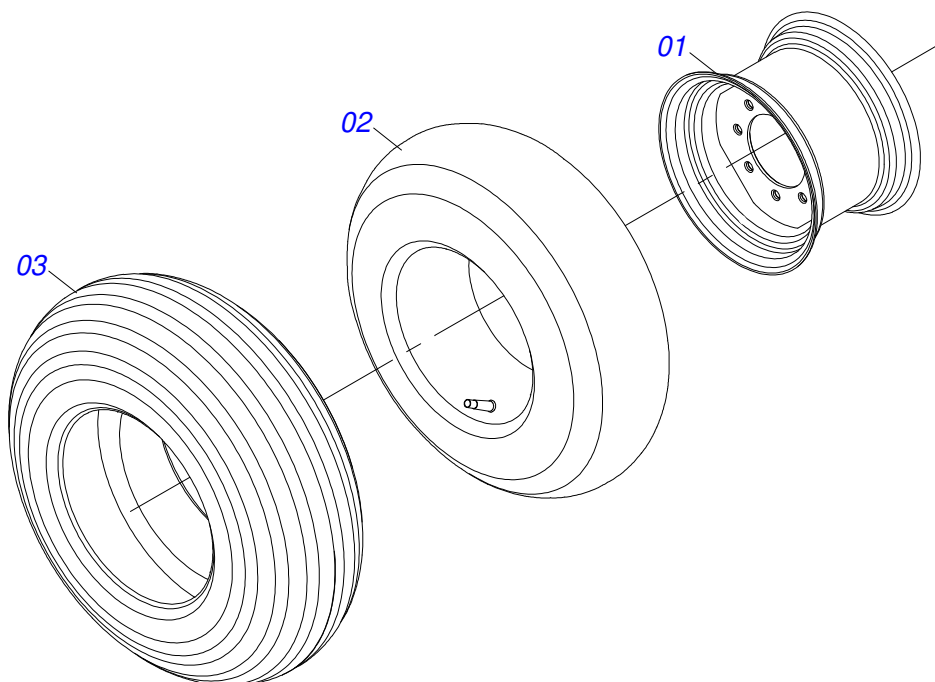
Item	Code	Description	See page	QT
01	0521044665	FULL EXTENSOR	15	01
02	0521065181	ADJUSTING NUT		01
03	0551010782	RIGHT LOCKNUT		01
04	0521065182	SCREW		01
05	0503010002	1800 GREASE FITTING		01



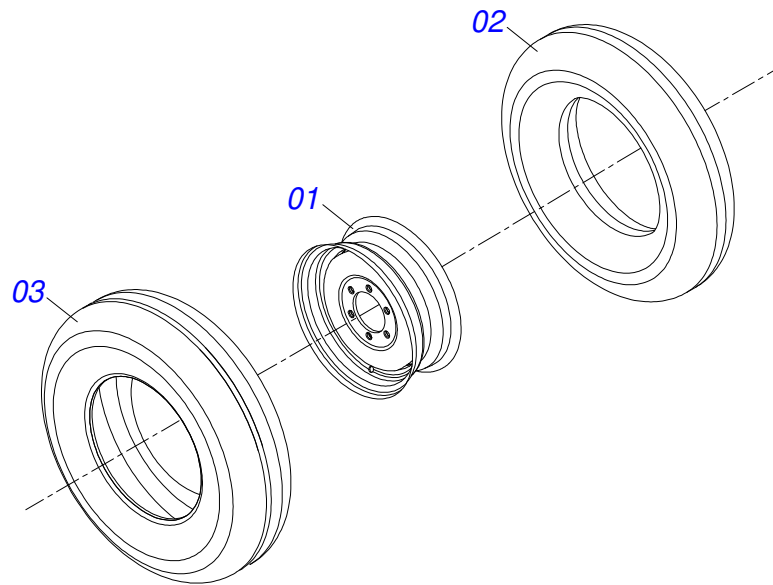
Item	Code	Description	See page	QT
001	0501060188	DRAWBAR ASSY		01
002	0521061775	TRACTOR HITCH		01
003	0501010334	1" X 7" BOLT		01
004	0503010012	1" SPRING WASHER		01
005	0501010059	1.5/8 NUT		01
006	0521064088	LOCK AXLE		01
007	0503030012	HITCH PIN CLIP		01
008	0501010334	1" X 7" BOLT		01
009	0503010012	1" SPRING WASHER		01
010	0501010059	1.5/8 NUT		01
011	0521067644	JUNCTION SHAFT		01
012	0503031035	HITCH PIN CLIP		01
013	0501040343	DRAWBOLT ASSY		01
013A	0521010453	AXI SHAFT		01
013B	0503031035	HITCH PIN CLIP		01



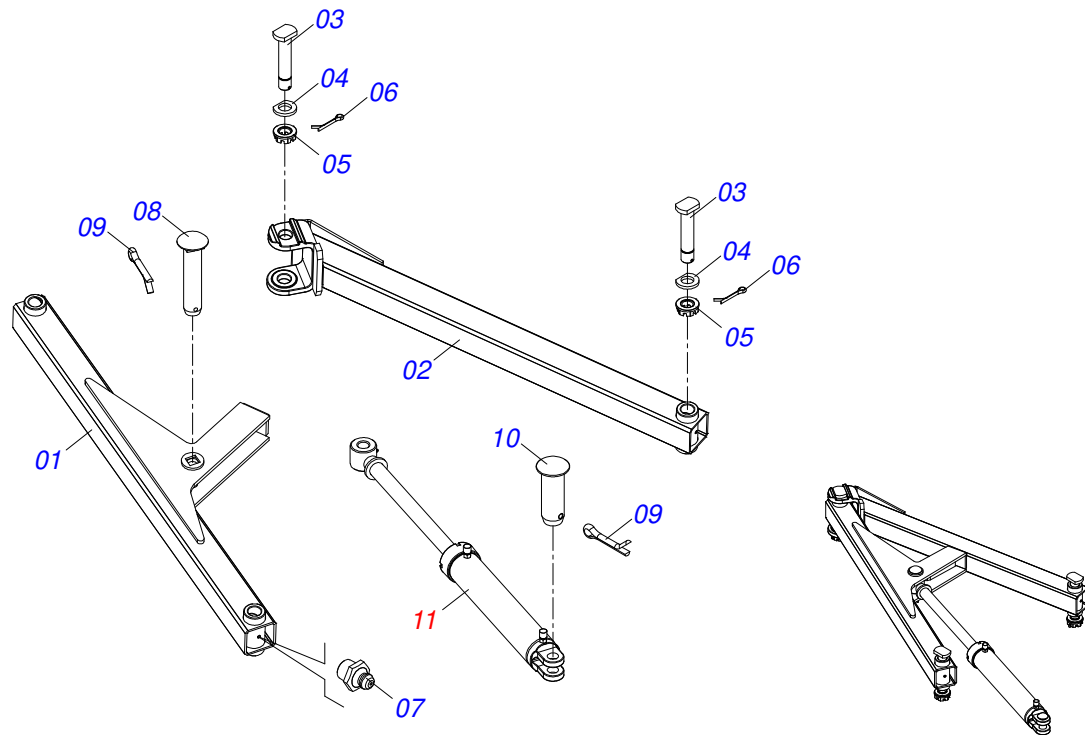
Item	Code	Description	See page	QT
01	0503062227	DRAWBAR JACK		01



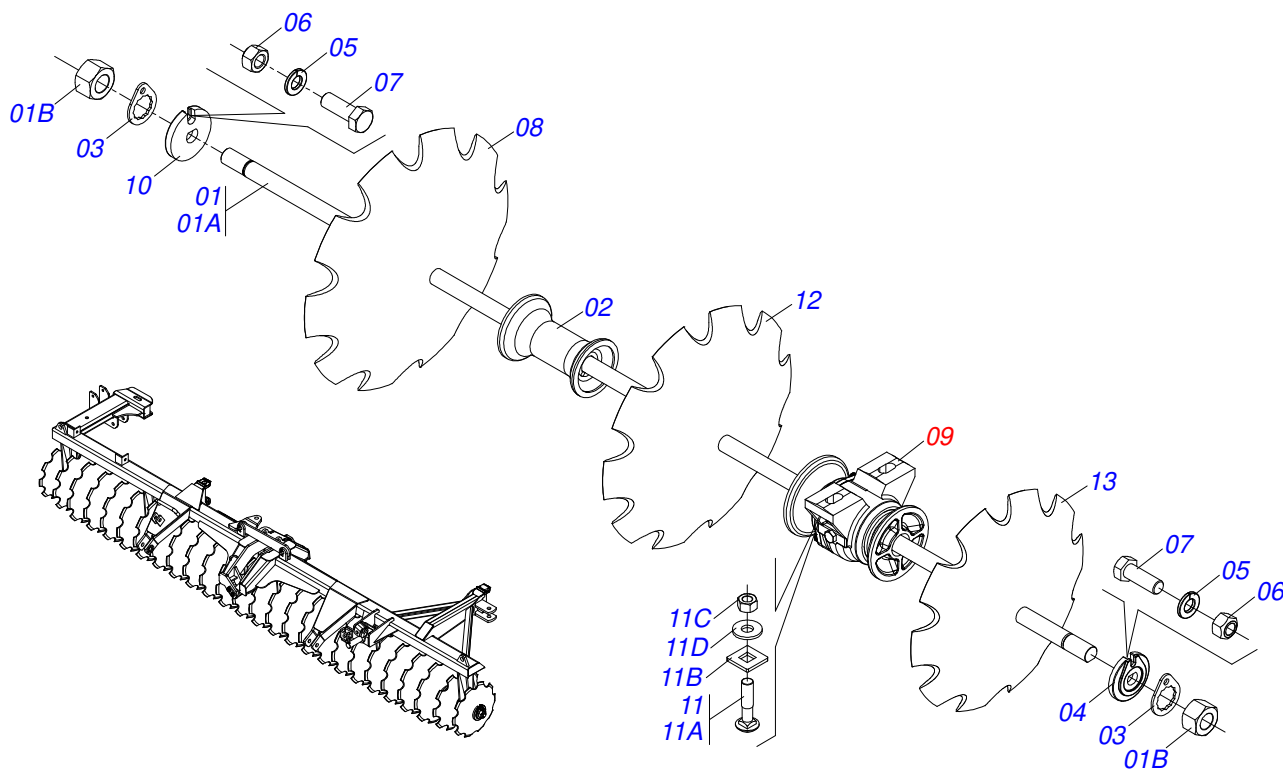
Item	Code	Description	See page	QT
01	0503012108	WHEEL 10 LB X 15 X 8F X 203		01
02	0503010860	AIR CHAMBER 11L 15		01
03	0503010858	CANVAS TIRE		01



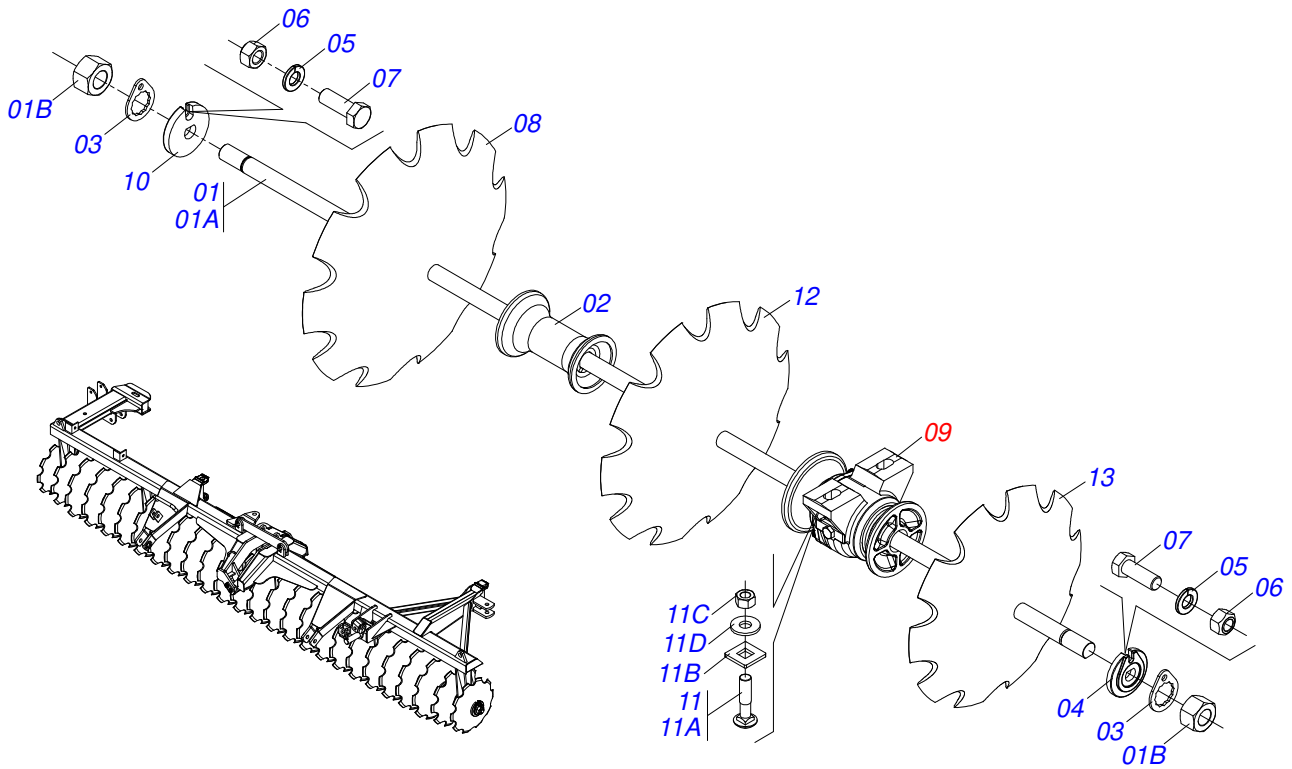
Item	Code	Description	See page	QT
01	0503010893	WHEEL		01
02	0503010033	7.50 X 16 INNER TIRE		01
03	0503010120	CANVAS TIRE		01



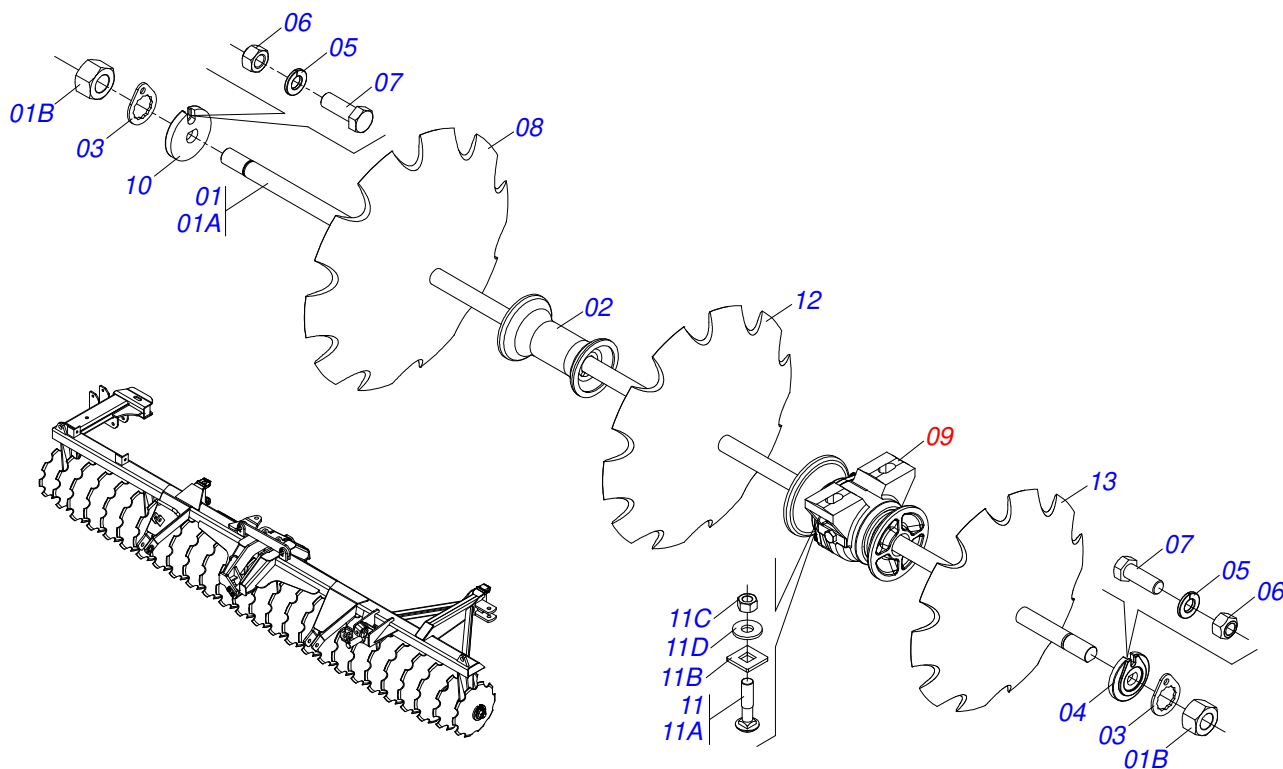
Item	Code	Description	See page	QT
01	0511064087	FRONT STABILIZER BAR		03
02	0511064088	REAR STABILIZER BAR		03
03	0531019497	1.5" X 9.2" ARTICULATED AXIS		09
04	0501012916	FLAT WASHER 38,50 X 66 X 4,75 ZN		09
05	0501011301	1.1/2 UNC 6FPP 2.5/16 NUT		09
06	0503010010	1/4" X 2.1/2" COTTERPIN		09
07	0503010002	1800 GREASE FITTING		09
08	0521013077	1.2" X 5.7" PIVOT SHAFT		03
09	0503010523	1/4" X 2" COTTERPIN		04
10	0521012538	1.2" X 3.5" COUPLING SHAFT		03
11	0511058461	HYDRAULIC CYLINDER		03



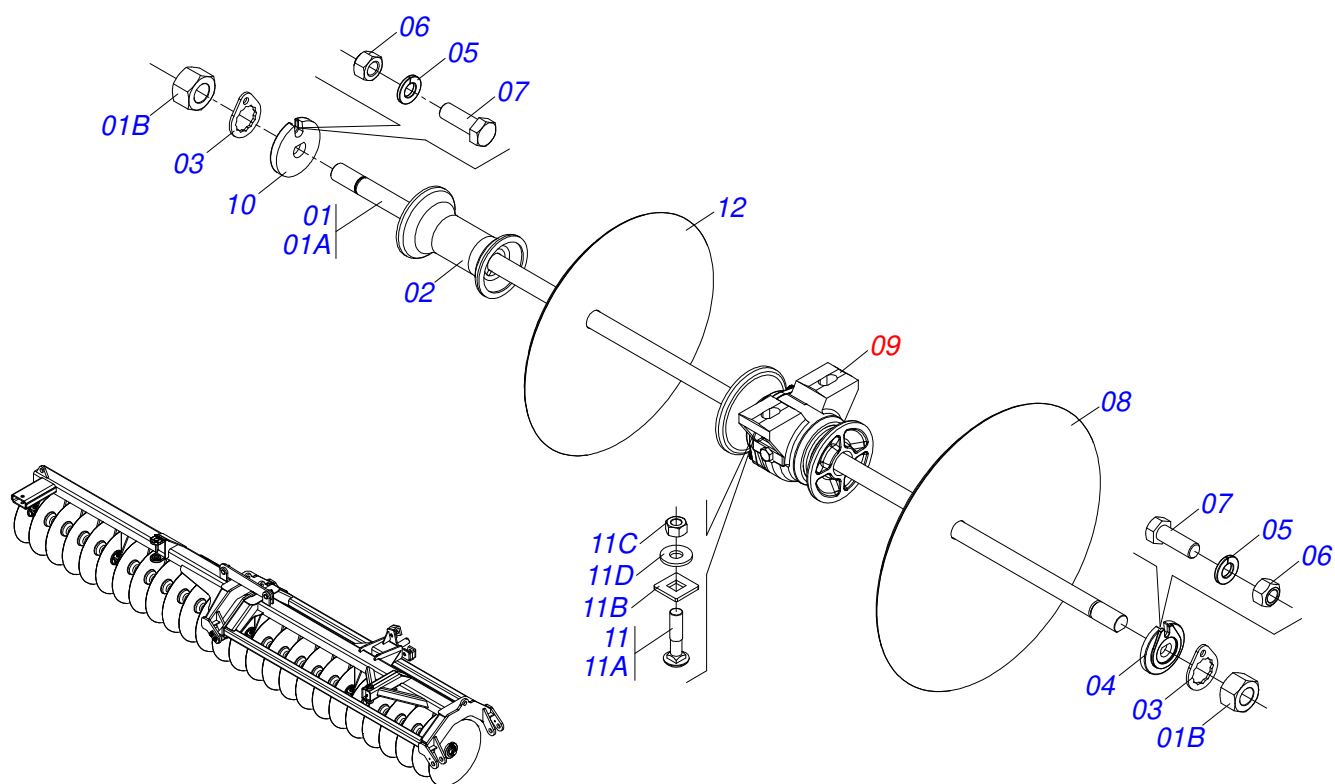
Item	Code	Description	See page	QT
01	0511054527	AXIS 1.1/2" UNC X 2490 WITH NUTS		02
01A	0531019372	AXIS 1.1/2 6FPP X 2490		02
01B	0501010110	1.1/2" NUT		04
02	0502010627	SPACER		18
03	0501018592	1.5/8" NUT LOCK		04
04	0502010871	1-1/2" EXTERNAL AXLE WASHER		02
05	0503010027	5/8" SPRING WASHER		04
06	0503010013	5/8" NUT		04
07	0503011267	BOLT 5/8 UNC X 1.1/2 C S G.5 ZN		04
08	0602029416	DR22X4,5 C64AF02FR1.9/16 10REC TATU		24
09	0501047055	BEARING		06
10	0502010872	1-1/2" INNER AXLE WASHER		02
11	0501058802	5/8 UNC X 2.3/4 BOLT ASSY		12
11A	0503015154	5/8" X 2.3/4" BOLT		12
11B	0501010947	5/8 NUT LOCK		12
11C	0503010013	5/8" NUT		24
11D	0501012140	FLAT WASHER		12
12	0602025263	18" X 4,5 NOTCHED DISC BLADE		01
13	0602023109	DR16X4,5 C38AF02FR1.9/16 08REC TATU		01



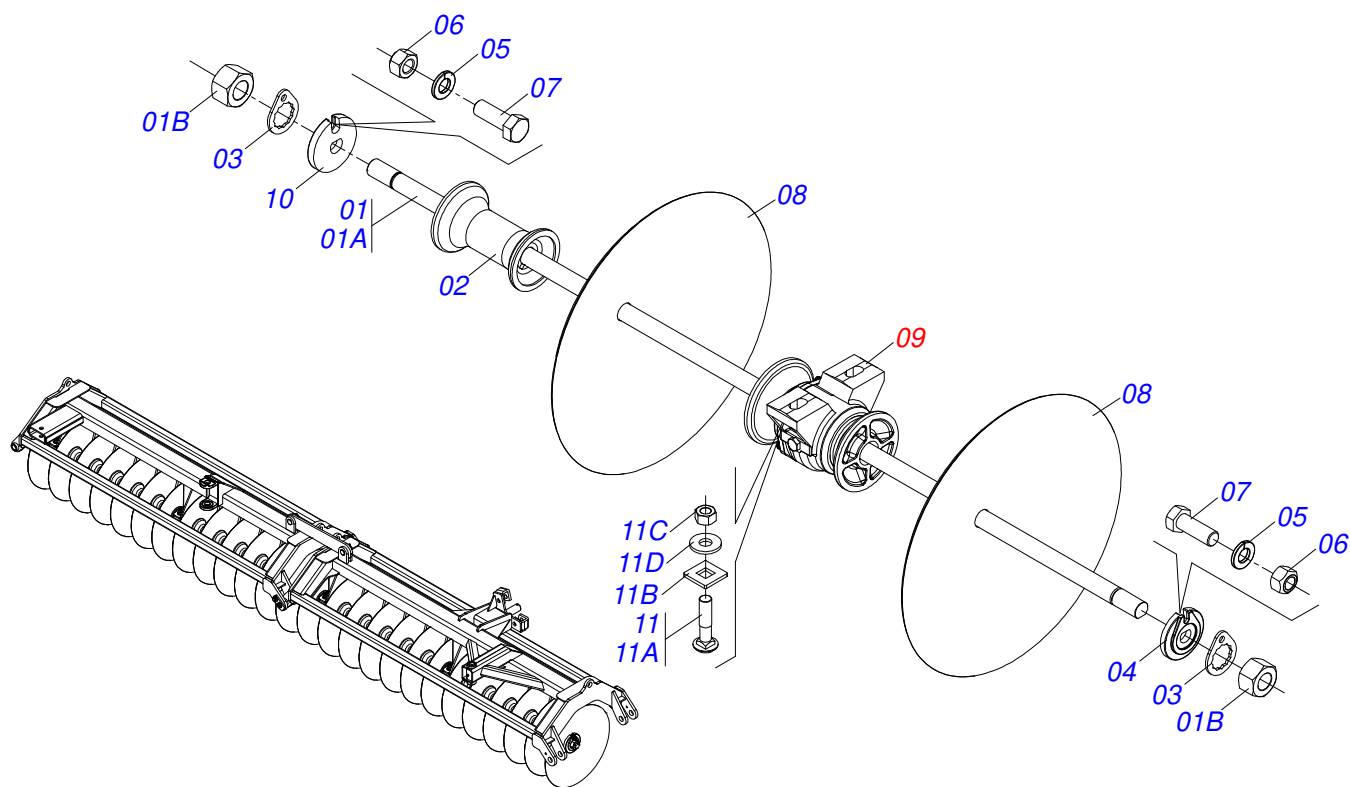
Item	Code	Description	See page	QT
01	0511054527	AXIS 1.1/2" UNC X 2490 WITH NUTS		02
01A	0531019372	AXIS 1.1/2 6FPP X 2490		02
01B	0501010110	1.1/2" NUT		04
02	0502010627	SPACER		18
03	0501018592	1.5/8" NUT LOCK		04
04	0502010871	1-1/2" EXTERNAL AXLE WASHER		02
05	0503010027	5/8" SPRING WASHER		04
06	0503010013	5/8" NUT		04
07	0503011267	BOLT 5/8 UNC X 1.1/2 C S G.5 ZN		04
08	0602029416	DR22X4,5 C64AF02FR1.9/16 10REC TATU		22
09	0501047055	BEARING		06
10	0502010872	1-1/2" INNER AXLE WASHER		02
11	0501058802	5/8 UNC X 2.3/4 BOLT ASSY		12
11A	0503015154	5/8" X 2.3/4" BOLT		12
11B	0501010947	5/8 NUT LOCK		12
11C	0503010013	5/8" NUT		24
11D	0501012140	FLAT WASHER		12
12	0602025263	18" X 4,5 NOTCHED DISC BLADE		02
13	0602023109	DR16X4,5 C38AF02FR1.9/16 08REC TATU		02



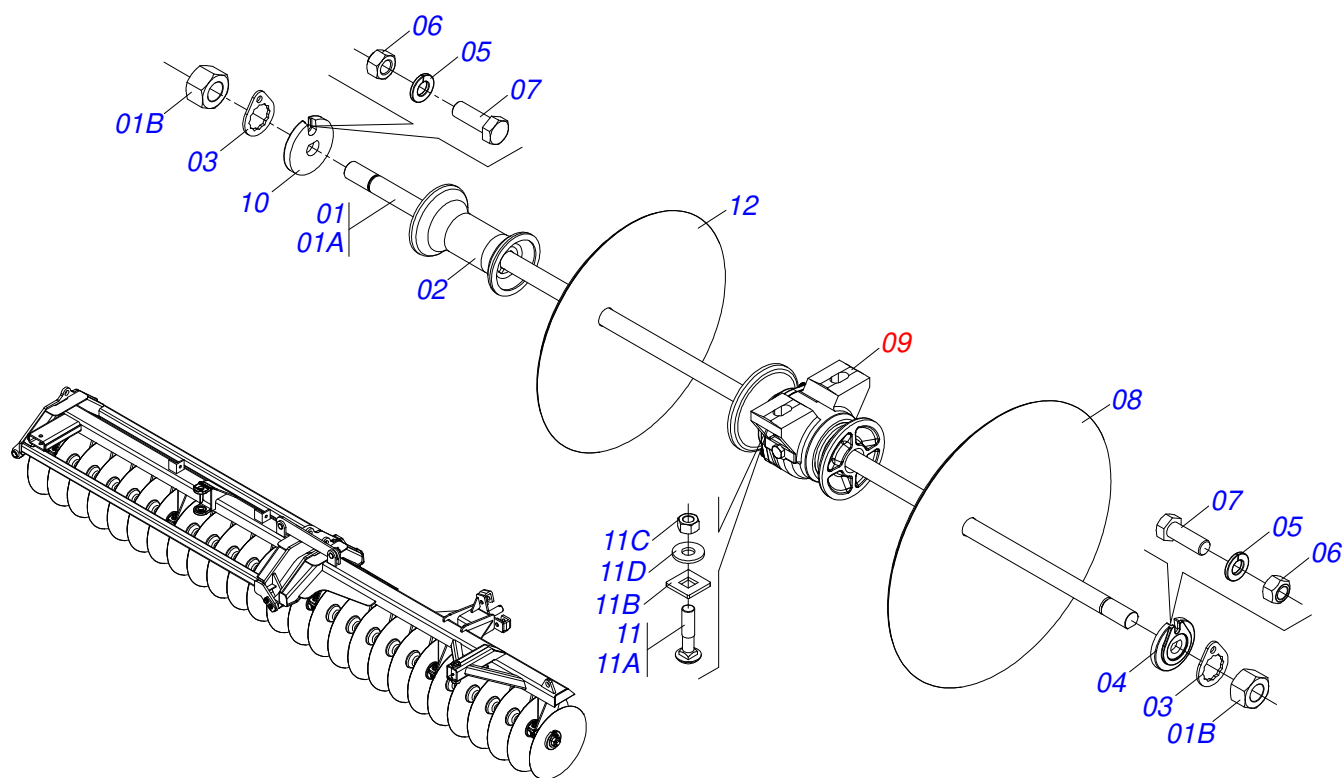
Item	Code	Description	See page	QT
01	0511054527	AXIS 1.1/2" UNC X 2490 WITH NUTS		02
01A	0531019372	AXIS 1.1/2 6FPP X 2490		02
01B	0501010110	1.1/2" NUT		04
02	0502010627	SPACER		18
03	0501018592	1.5/8" NUT LOCK		04
04	0502010871	1-1/2" EXTERNAL AXLE WASHER		02
05	0503010027	5/8" SPRING WASHER		04
06	0503010013	5/8" NUT		04
07	0503011267	BOLT 5/8 UNC X 1.1/2 C S G.5 ZN		04
08	0602029416	DR22X4,5 C64AF02FR1.9/16 10REC TATU		24
09	0501047055	BEARING		06
10	0502010872	1-1/2" INNER AXLE WASHER		02
11	0501058802	5/8 UNC X 2.3/4 BOLT ASSY		12
11A	0503015154	5/8" X 2.3/4" BOLT		12
11B	0501010947	5/8 NUT LOCK		12
11C	0503010013	5/8" NUT		24
11D	0501012140	FLAT WASHER		12
12	0602025263	18" X 4,5 NOTCHED DISC BLADE		01
13	0602023109	DR16X4,5 C38AF02FR1.9/16 08REC TATU		01



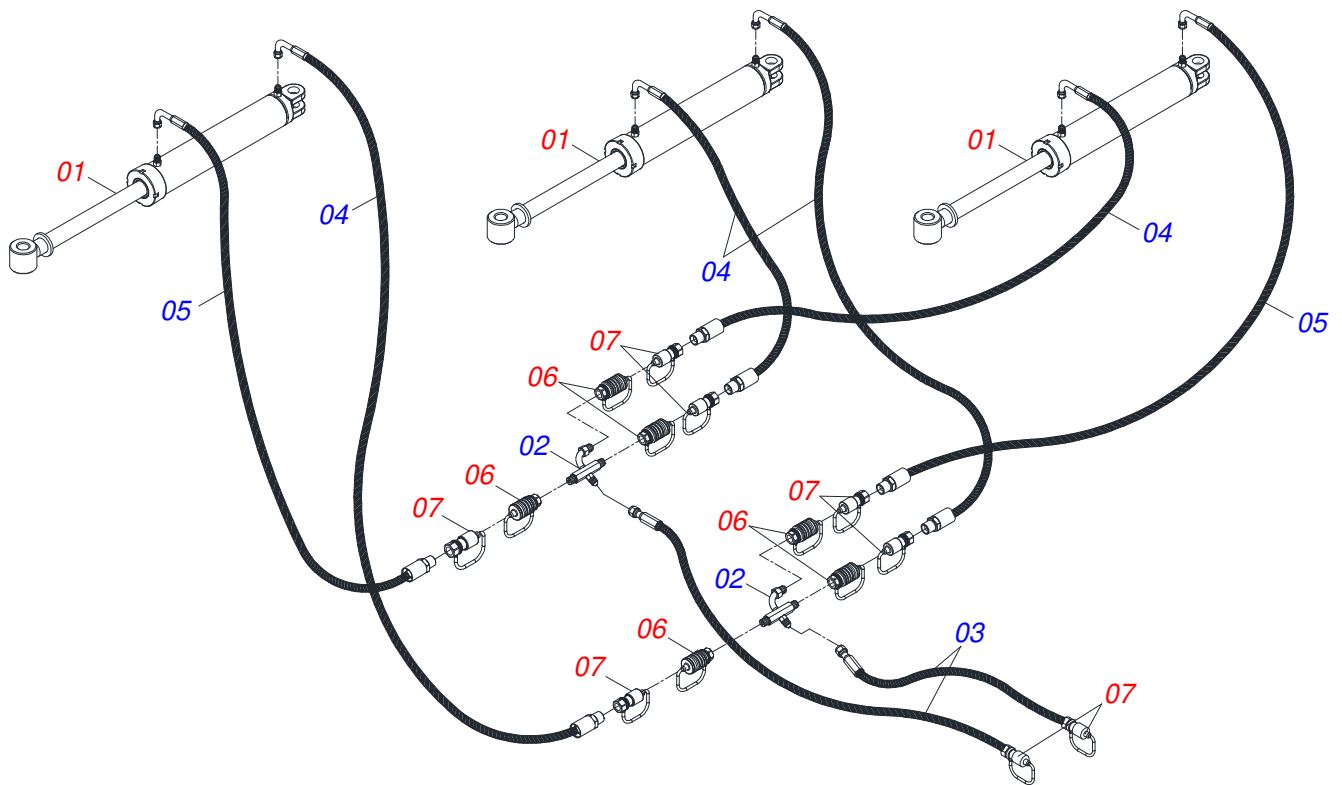
Item	Code	Description	See page	QT
01	0511054527	AXIS 1.1/2" UNC X 2490 WITH NUTS		02
01A	0531019372	AXIS 1.1/2 6FPP X 2490		02
01B	0501010110	1.1/2" NUT		04
02	0502010627	SPACER		18
03	0501018592	1.5/8" NUT LOCK		04
04	0502010871	1-1/2" EXTERNAL AXLE WASHER		02
05	0503010027	5/8" SPRING WASHER		04
06	0503010013	5/8" NUT		04
07	0503011267	BOLT 5/8 UNC X 1.1/2 C S G.5 ZN		04
08	0601029413	DL22X4,5 C64AF02FR1.9/16 TATU		25
09	0501047055	BEARING		06
10	0502010872	1-1/2" INNER AXLE WASHER		02
11	0501058802	5/8 UNC X 2.3/4 BOLT ASSY		12
11A	0503015154	5/8" X 2.3/4" BOLT		12
11B	0501010947	5/8 NUT LOCK		12
11C	0503010013	5/8" NUT		24
11D	0501012140	FLAT WASHER		12
12	0601025085	DL18X4,5 C44AF02FR39,29 WIESE		01



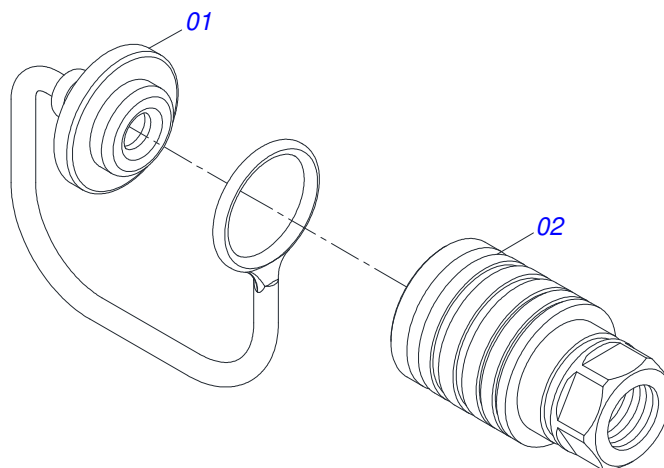
Item	Code	Description	See page	QT
01	0511054527	AXIS 1.1/2" UNC X 2490 WITH NUTS		02
01A	0531019372	AXIS 1.1/2 6FPP X 2490		02
01B	0501010110	1.1/2" NUT		04
02	0502010627	SPACER		18
03	0501018592	1.5/8" NUT LOCK		04
04	0502010871	1-1/2" EXTERNAL AXLE WASHER		02
05	0503010027	5/8" SPRING WASHER		04
06	0503010013	5/8" NUT		04
07	0503011267	BOLT 5/8 UNC X 1.1/2 C S G.5 ZN		04
08	0601029413	DL22X4,5 C64AF02FR1.9/16 TATU		26
09	0501047055	BEARING		06
10	0502010872	1-1/2" INNER AXLE WASHER		02
11	0501058802	5/8 UNC X 2.3/4 BOLT ASSY		12
11A	0503015154	5/8" X 2.3/4" BOLT		12
11B	0501010947	5/8 NUT LOCK		12
11C	0503010013	5/8" NUT		24
11D	0501012140	FLAT WASHER		12



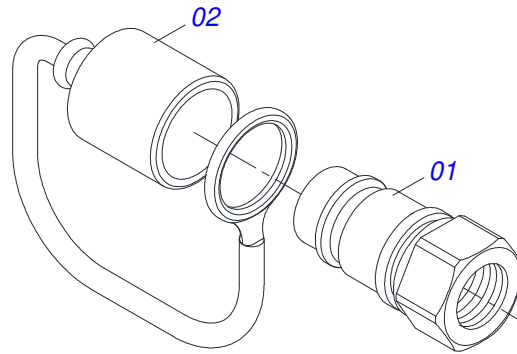
Item	Code	Description	See page	QT
01	0511054527	AXIS 1.1/2" UNC X 2490 WITH NUTS		02
01A	0531019372	AXIS 1.1/2 6FPP X 2490		02
01B	0501010110	1.1/2" NUT		04
02	0502010627	SPACER		18
03	0501018592	1.5/8" NUT LOCK		04
04	0502010871	1-1/2" EXTERNAL AXLE WASHER		02
05	0503010027	5/8" SPRING WASHER		04
06	0503010013	5/8" NUT		04
07	0503011267	BOLT 5/8 UNC X 1.1/2 C S G.5 ZN		04
08	0601029413	DL22X4,5 C64AF02FR1.9/16 TATU		25
09	0501047055	BEARING		06
10	0502010872	1-1/2" INNER AXLE WASHER		02
11	0501058802	5/8 UNC X 2.3/4 BOLT ASSY		12
11A	0503015154	5/8" X 2.3/4" BOLT		12
11B	0501010947	5/8 NUT LOCK		12
11C	0503010013	5/8" NUT		24
11D	0501012140	FLAT WASHER		12
12	0601025085	DL18X4,5 C44AF02FR39,29 WIESE		01



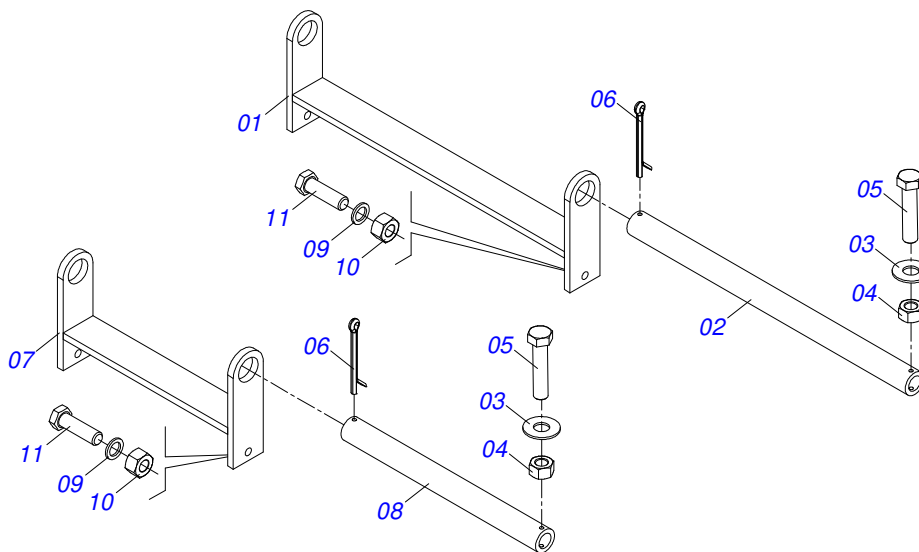
Item	Code	Description	See page	QT
01	0511058461	HYDRAULIC CYLINDER		03
02	0521064325	OIL DISTRIBUTOR		02
03	0501080361	3/8" X 157" TR-TM HOSE		02
04	0501080458	3/8" X 315" TC-TM HOSE ASSY		04
05	0501080459	3/8" X 322" TC-TM HOSE ASSY		02
06	0501053835	FEMALE QUICK COUPLER	28	06
07	0501053834	MALE QUICK COUPLER	29	08



Item	Code	Description	See page	QT
01	0503011883	QUICK CONNECTION COVER		01
02	0503011628	FEMALE QUICK COUPLER		01



Item	Code	Description	See page	QT
01	0503011627	MALE QUICK COUPLER AGR 1/2 NPT		01
02	0503011882	MALE QUICK COUPLER CAP		01



Item	Code	Description	See page	QT
001	0531062435	HEADLINE TRANSPORT SUPPORT 930		02
002	0591018791	TRANSPORT FIXING AXIS 1030		02
003	0501013518	FLAT WASHER		04
004	0503010026	3/8" NUT		04
005	0503010765	3/8" X 3" BOLT		04
006	0503010074	3/8 X 0,15" COTTERPIN		04
007	0521067645	SUPPORT TRANSPORT HEADER		02
008	0581013895	TRANSPORT FIXING SHAFT		02
009	0501017066	FLAT WASHER		04
010	0503010014	3/4" NUT		04
011	0501010125	3/4" X 2-1/2" BOLT		04



MARCHESAN

Technical Publications | Elaboration and Revision

ALESSANDRA PATRICIA KAWAHARA CARRILI

www.marchesan.com.br

