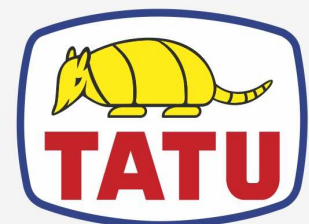


ROTARY CUTTERS

RC2E 3100 CL
RC2E 3100 CL

Code: 0501091614
Series: S-0214
Revision: 00
Revision Date: DECEMBER/2023

PARTS CATALOGUE



MARCHESAN



PRODUCTS

Code	Working Width	Description
0104120068C		RC2/E 3100 CL C/R 1.3/4 C/PROT EXP S-0214
0104120068		RC2/E 3100CLRR C/R C/PROT COR S0214

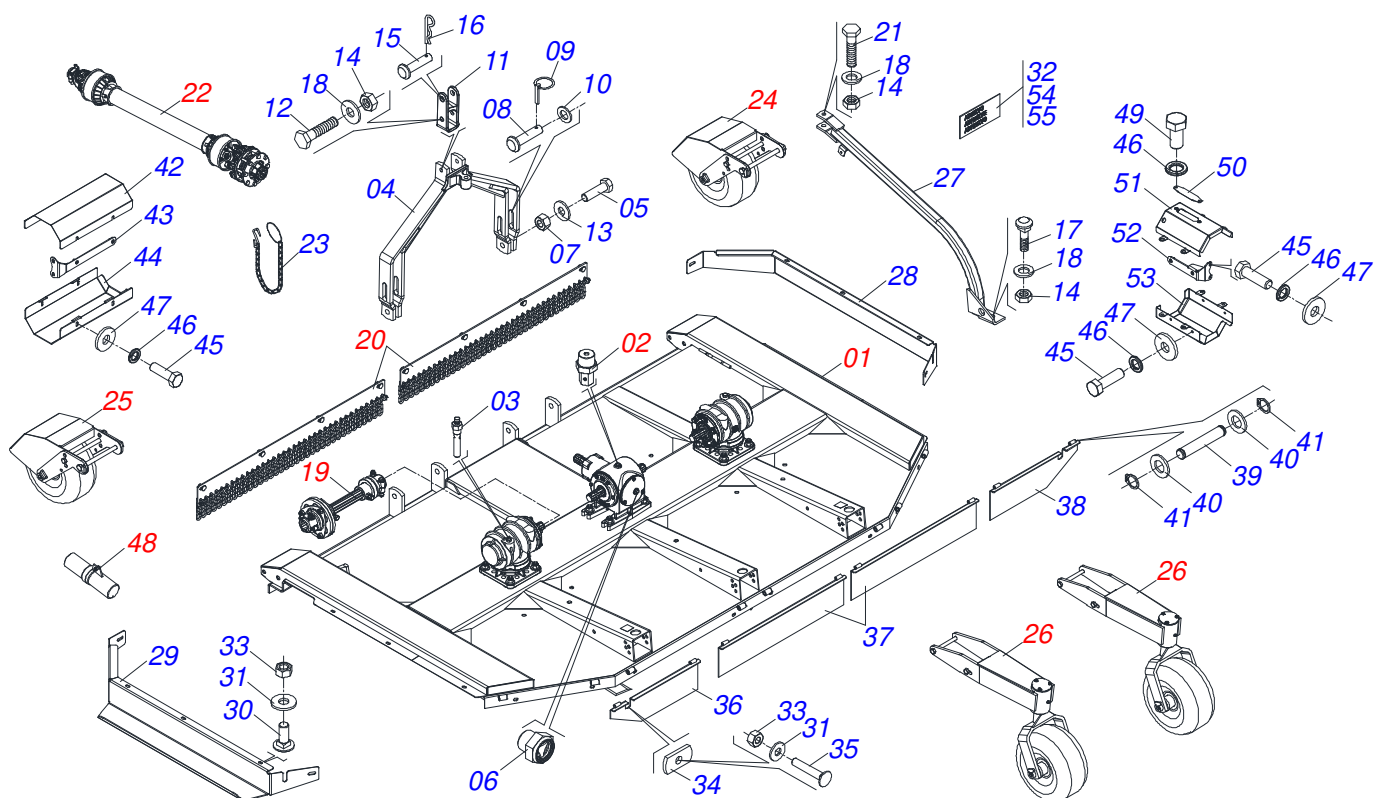
ATTENTION: IMPORTANT

Marchesan S.A. reserves the right to improve and/or modify the technical features of its products, without obligation to do the same with those products already sold and without prior knowledge of the dealer or the customer. The photos are only illustrative.



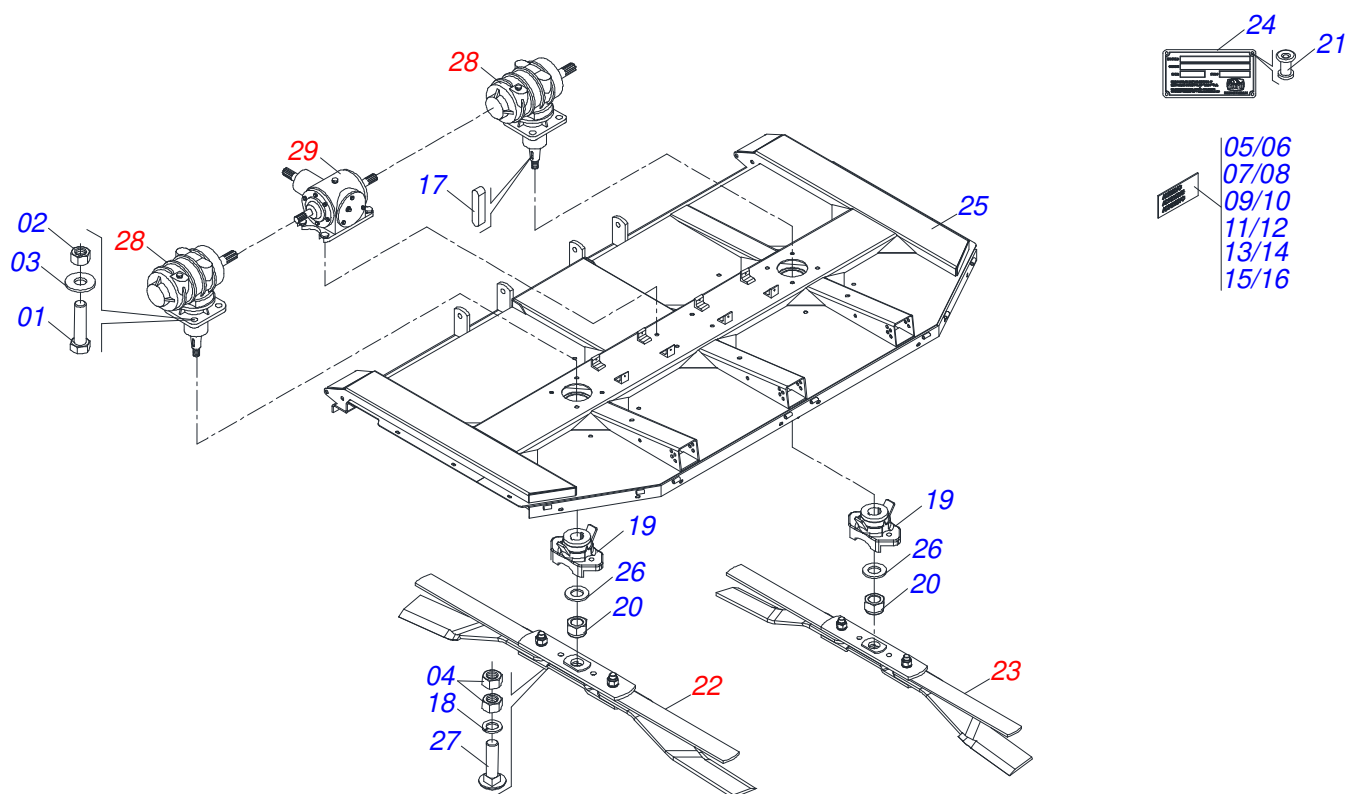
INDEX

0909090913	FRAME	1
0511055718	SEMIFINISHED FRAME	2
0501056328	340 SUPPORT WITH LEFT ROCADOR	3
0501056327	RIGHT WHEEL SUPPORT	4
0511042159	LH MULTIPLIER	5
0511041608	DOUBLE DISTRIBUTOR	6
0511056241	3/8 BSPT BREATHER	7
0531042351	COMPLETE ELASTIC COUPLING	8
0531059931	1.3/4 6E ACOPLAMIENTO ELÁSTICO	9
0531054844	1.3/4 6E ELASTIC COUPLING TERMINAL	10
0521056205	FRONT CURRENT PROTECTION	11
0511043450	DRIVE SHAFT	12
0501056010	FRICTION CLUTCH	13
0511044473	FRONT WHEEL RIGHT WITH ASSY PROTECTION	14
0511048551	RIGHT FRONT WHEEL WITH FULL PROTECTION	15
0511044441	CARRYING WHEELS ASSY	16
0521052977	MANUAL CANISTER ASSY	17

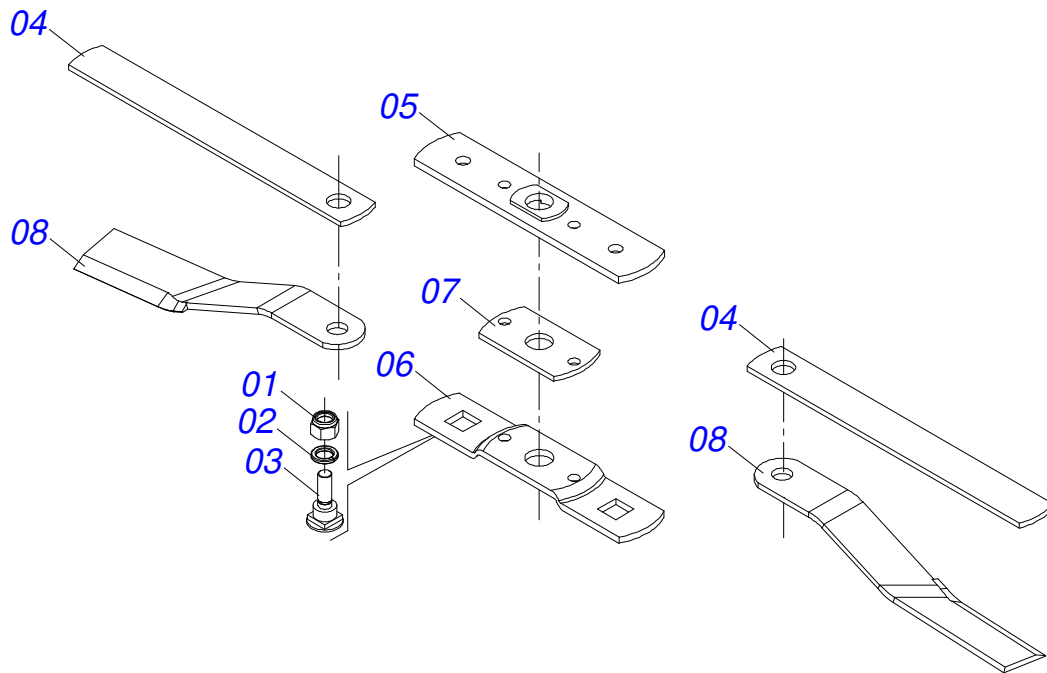


Item	Code	Description	See page	QT
01	0511055718	SEMIFINISHED FRAME	2	01
02	0511056241	3/8 BSPT BREATHER	7	01
03	0501110186	OIL SMALLER LEVEL INDICATOR		02
04	0511062006	DRAWBAR		01
05	0501010171	BOLT 1 UNC X 3.1/2 C S G.5		02
06	0503035742	VISOR LEVEL TIP IS 3/8 BUST		01
07	0503014182	SELF-ADJUSTING NUT		02
08	0521010629	1.1" X 5.1" COUPLING SHAFT		02
09	0503030430	7/16 X 2" PIN LOCK		02
10	0501010065	1" SPRING WASHER		02
11	0502040922	DRAWBAR SUPPLEMENT		01
12	0501011545	3/4" X 6-1/2" BOLT		01
13	0511015994	FLAT WASHER		02
14	0503011075	UNC NUT 3/4 UNC ALTA G.5 ZN		03
15	0521010578	COUPLING SHAFT		01
16	0503031035	HITCH PIN CLIP		01
17	0501017305	3/4" X 2-1/4" BOLT		01
18	0501010322	20,50 X 46 X 4,00 ZN FLAT WASHER		03
19	0531042351	COMPLETE ELASTIC COUPLING	8	02
20	0521056205	FRONT CURRENT PROTECTION	11	02
21	0501010216	3/4 UNC X 4.1/2 C S G.5 ZN BOLT		01
22	0511043450	DRIVE SHAFT	12	01
23	0503011981	17.7" CHAIN WITH HOOK/LINK		01
24	0511044473	FRONT WHEEL RIGHT WITH ASSY PROTECTION	14	01
25	0511048551	RIGHT FRONT WHEEL WITH FULL PROTECTION	15	01
26	0511044441	CARRYING WHEELS ASSY	16	02
27	0501067540	FRENCH HAND		01
28	0591010767	RIGHT SIDE PROTECTION BODY		01
29	0591010765	LEFT SIDE PROTECTION BODY		01
30	0503014734	BOLT		12

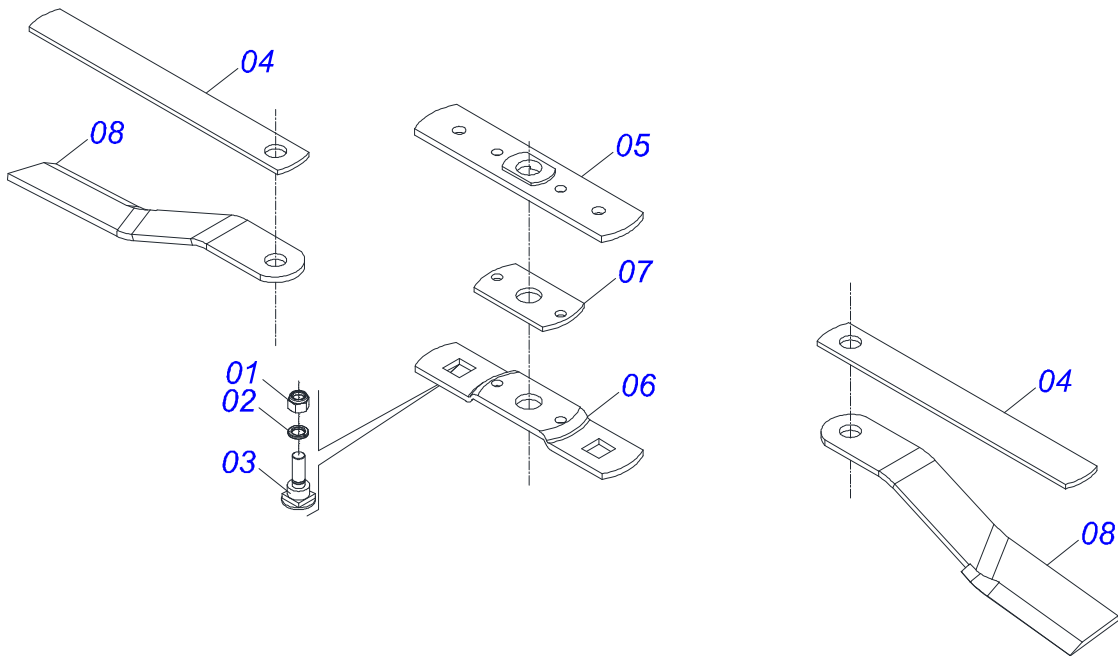
Item	Code	Description	See page	QT
31	0511017302	FLAT WASHER 13,50 X 32,50 X 3,0 ZN		16
32	0503034247	ADHESIVE LABEL POINT LUBRICATION		01
33	0503010589	UNC SELF ADJUSTING NUT 1/2" UNC ALTA G.5 ZN		16
34	0551019824	RH PROTECTION LOCK		02
35	0503014378	1/2" X 1-1/2" BOLT		02
36	0511069884	REAR PROTECTION		01
37	0511069882	REAR CENTRAL PROTECTION		02
38	0511069883	REAR PROTECTION		01
39	0501213766	PIN WITH GROOVES		08
40	0503011828	FLAT WASHER 13 X 24 X 2,00 ZN		16
41	0503013219	RETAINING RING		16
42	0591010764	TOP COUPLING PROTECTION COVER		02
43	0501111017	BODY SUPPORT COUPLING PROTECTION COVER		04
44	0501111181	LOWER PROTECTIVE COVER COUPLING		02
45	0503010237	3/8" X 1" BOLT		16
46	0503010025	3/8 SPRING WASHER		18
47	0501010984	10,50 X 27 X 3,00 FLAT WASHER		16
48	0521052977	MANUAL CANISTER ASSY	17	01
49	0503010256	3/8" X 3/4" BOLT		02
50	0581012546	LUBRICATION AXIS TRANSMISSION		01
51	0501110998	CARDAN TOP PROTECTION COVER		01
52	0501110997	LARGER SUPPORT COVER PROTECTION		02
53	0501111144	BOTTOM PROTECTION COVER COUPLING WITH RIVET		01
54	0503031087	AUTO CONTROL APPROVED DECAL		01
55	0503031127	ADHESIVE LABEL		03



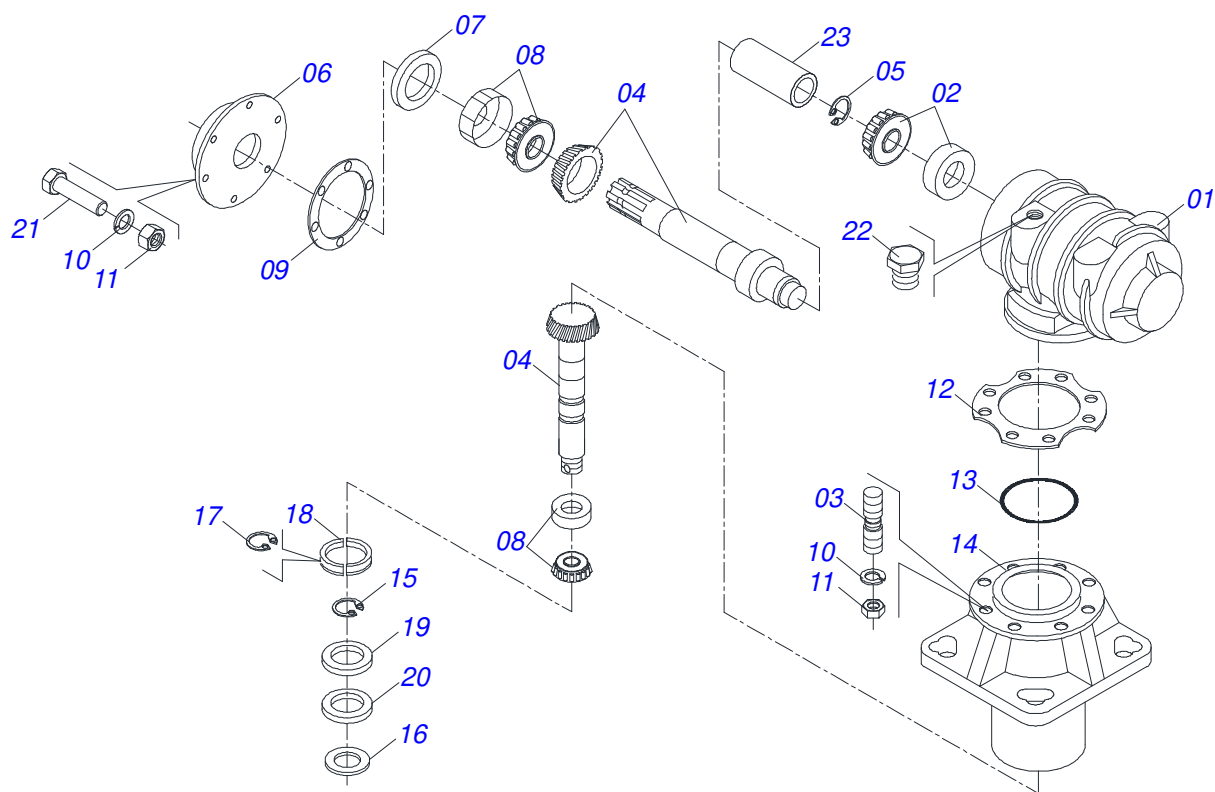
Item	Code	Description	See page	QT
01	0503017867	SCREW 3/4 UNC X 4.1/2 CAPQ G.7 ZN		12
02	0503011075	UNC NUT 3/4 UNC ALTA G.5 ZN		12
03	0501010322	20,50 X 46 X 4,00 ZN FLAT WASHER		12
04	0503010014	3/4" ZN G.5 (HEAVY) UNC HEX NUT		08
05	0503034750	ADHESIVE		01
06	0503034333	ADHESIVE LABEL		01
07	0503034078	LIFTING POINTS DECAL		04
08	0503032949	ATTENTION 3 LANGUAGES DECAL		01
09	0503032535	LABEL ADHESIVE CARDAN SIDE		01
10	0503032534	ADHESIVE LABEL		01
11	0503032060	ADHESIVE LABEL		02
12	0503031932	ADHESIVE LABEL		01
13	0503031930	ADHESIVE LABEL		01
14	0503031929	ADHESIVE LABEL		01
15	0503031428	READ MANUAL DECAL		01
16	0503031427	ADHESIVE LABEL		01
17	0501010536	KEYWAY SQUARE		04
18	0503011442	3/4" SPRING WASHER		16
19	0502012453	SUPPORT FLANGE		02
20	0503010817	SELF LOCKING NUT 1.1/4 UNF ALTA G.5 ZN		02
21	0503010001	RIVET 3,2 X 5,5		04
22	0501056328	340 SUPPORT WITH LEFT ROCADOR	3	01
23	0501056327	RIGHT WHEEL SUPPORT	4	01
24	0503034003	61 X 118 SERIAL NUMBER TAG		01
25	0521064890	FRAME		01
26	0501017779	FLAT WASHER 32 X 60 X 4,75		02
27	0503811328	BOLT		04
28	0511042159	LH MULTIPLIER	5	02
29	0511041608	DOUBLE DISTRIBUTOR	6	01



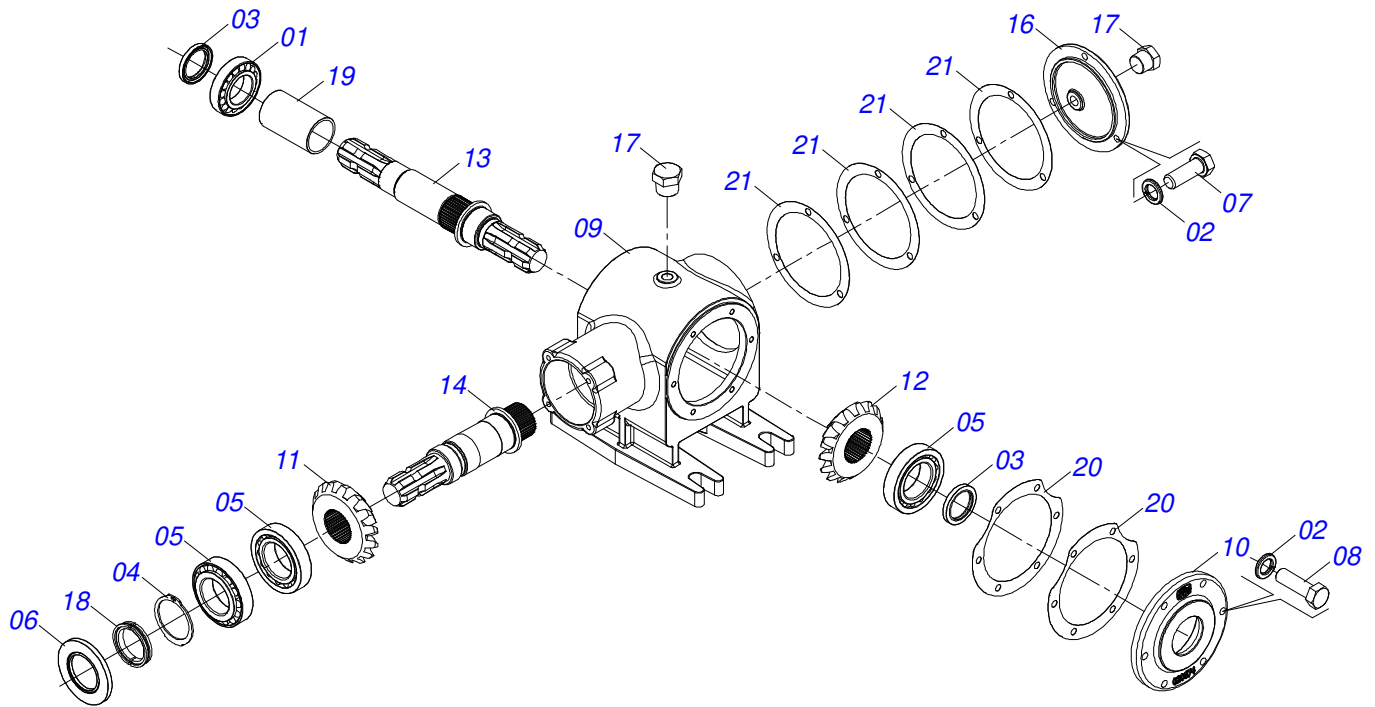
Item	Code	Description	See page	QT
01	0503010812	7/8" UNF SELF LOCKING NUT		02
02	0503011447	SPRING WASHER		02
03	0531014512	FASTENER ROCADORES		02
04	0531015055	620 FOLLOWER		02
05	0561017308	SUPPORT UPPER BASE		01
06	0561017368	ROTARY LOWER SUPPORT		01
07	0561017309	ROTARY SUPPORT CHOCK		01
08	0622400075	ROTARY CUTTER		02



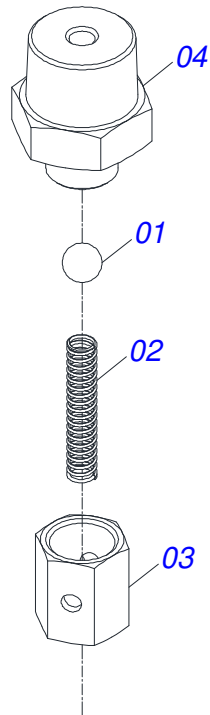
Item	Code	Description	See page	QT
01	0503010812	7/8" UNF SELF LOCKING NUT		02
02	0503011447	SPRING WASHER		02
03	0531014512	FASTENER ROCADORES		02
04	0531015055	620 FOLLOWER		02
05	0561017308	SUPPORT UPPER BASE		01
06	0561017368	ROTARY LOWER SUPPORT		01
07	0561017309	ROTARY SUPPORT CHOCK		01
08	0622400074	ROTARY CUTTER		02



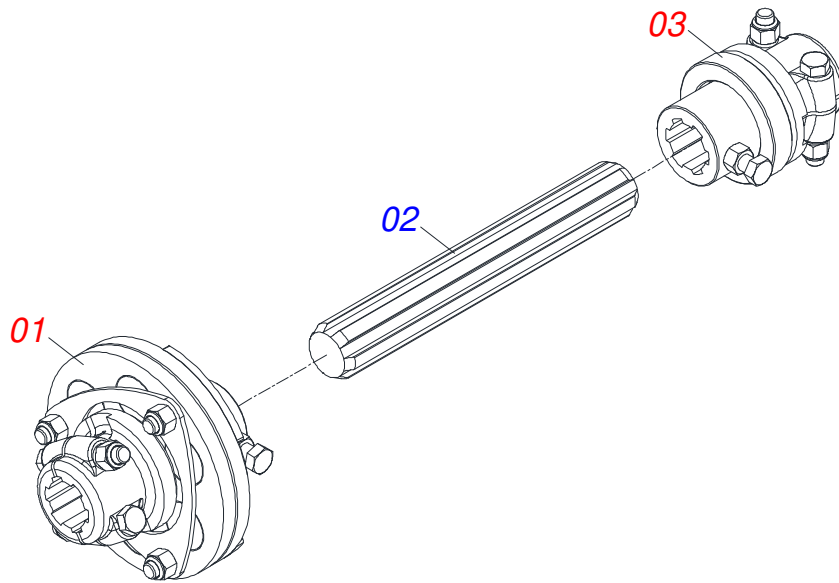
Item	Code	Description	See page	QT
01	0502012205	LEFT SPEED MULTIPLIER BOX		01
02	0503010750	30209 BALL BEARING		01
03	0503030084	1/2" X 1/2" X 2.0" STUD		14
04	0503060623	CROWN PINION SET		01
05	0503014772	501056 CLAMPING RING (FOR AXLE)		01
06	0502012207	LEFT MULTIPLIER LID		01
07	0503012103	5301 -BSEAL		01
08	0503012418	32211 ROLLER BEARING		01
09	0503030783	7.1" X 5.3" X 0.008" JOINT		03
10	0503011440	SPRING WASHER		14
11	0503010028	1/2" NUT		14
12	0503030785	7.9" X 5.9" X 0.008" JOINT		03
13	0503010286	2-355 N 3006-9B O'RING		01
14	0502012206	LOWER HUB		01
15	0503011420	502100 CLAMPING RING (FOR AXLE)		02
16	0531018823	FLAT WASHER		01
17	0503012311	501065 RENO RING		01
18	0531019302	LOCK RING		01
19	0503013211	6016 BRG SEAL		01
20	0503013201	ARCA 6016 BRG SEAL		01
21	0503810395	SCREW 1/2 UNC X 1.1/4 CSRT G.5 SA		06
22	0503031604	1/2" BSP PLUG		01



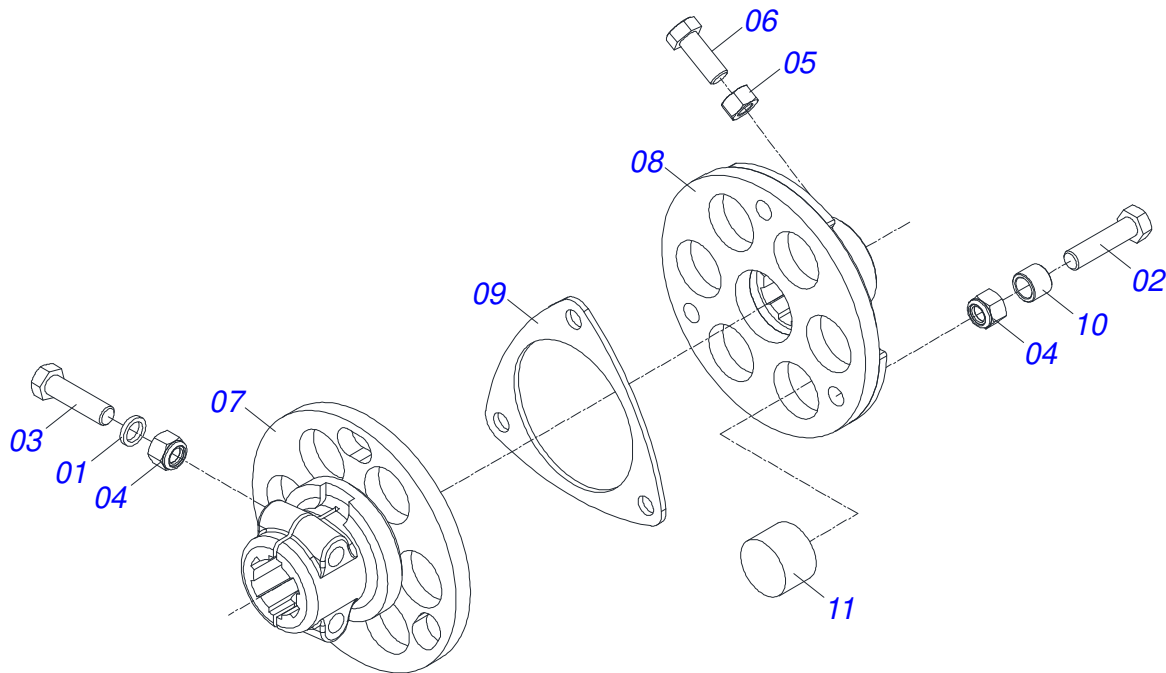
Item	Code	Description	See page	QT
01	0503010750	30209 BALL BEARING		01
02	0503011443	SPRING WASHER 3/8"		09
03	0503012103	5301 -BSEAL		02
04	0503012311	501065 RENO RING		01
05	0503012418	32211 ROLLER BEARING		03
06	0503013201	ARCA 6016 BRG SEAL		01
07	0503810237	3/8 UNC X 1 C S G.5 SA BOLT		03
08	0503810751	3/8 UNC X 1.1/4 C S G.5 - SCREW		06
09	0502012178	DOUBLE DISTRIBUTOR BOX		01
10	0502020674	DISTRIBUTOR DOUBLE COVER		01
11	0503033139	RIGHT 15Z CONICAL GEAR		01
12	0503033140	15Z LEFT CONICAL GEAR		01
13	0503033141	LARGER AXLE		01
14	0503033142	SMALLER AXLE S-0503 EG-1935		01
15	3402301247	MINERAL OIL SAE 140		2,0Lts
16	0502020160	COVER WITH DOUBLE DISTRIBUTOR		01
17	0503010856	OIL PLUG R 3/8 BSPT		02
18	0531019302	LOCK RING		01
19	0551018078	SLEEVE FLANGE BALL BEARING		01
20	0503030228	7.1" X 5.3" X 0.008" JOINT		02
21	0503030341	6.4" X 0.008" JOINT		04



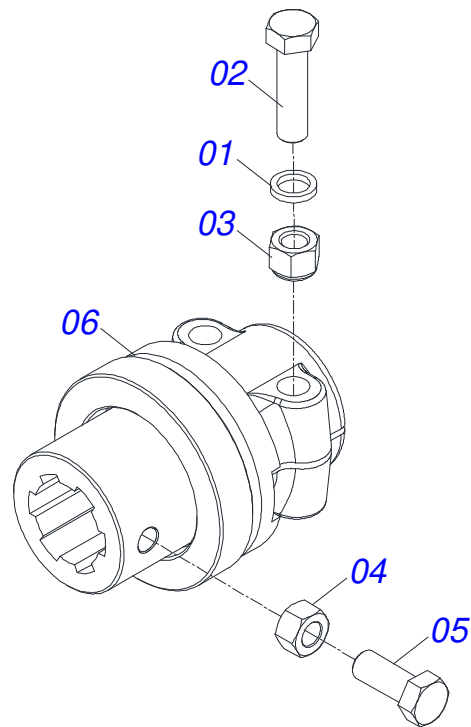
Item	Code	Description	See page	QT
01	0503015121	6 MM BALL		01
02	0503030051	0.2" X 1" X 0.1" COMPRESSION SPRING		01
03	0561016896	BREATHER LID		01
04	0571017245	3/8 BSPT PLUG WITH 1/4 BREATHER		01



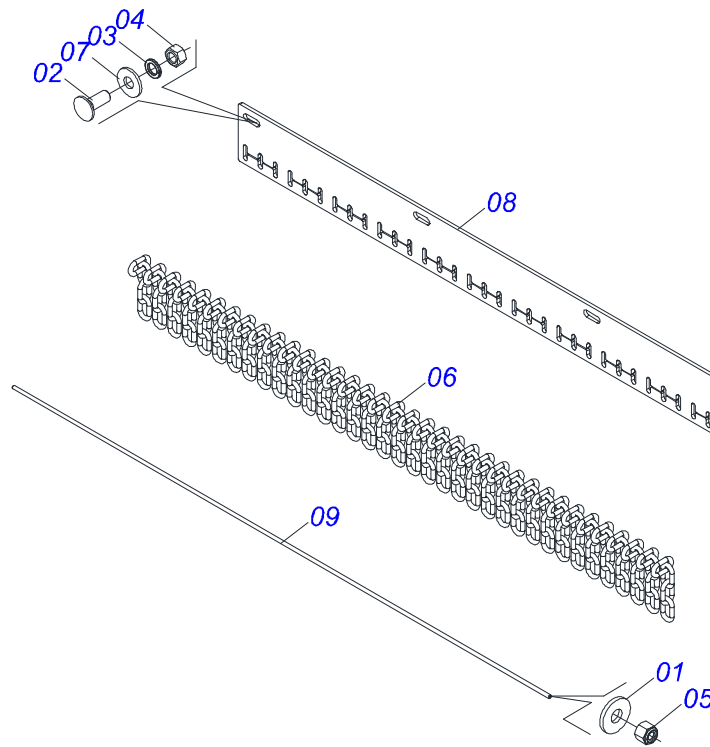
Item	Code	Description	See page	QT
01	0531059931	1.3/4 6E ACOPLAMIENTO ELÁSTICO	9	01
02	0503035769			01
03	0531054844	1.3/4 6E ELASTIC COUPLING TERMINAL	10	01



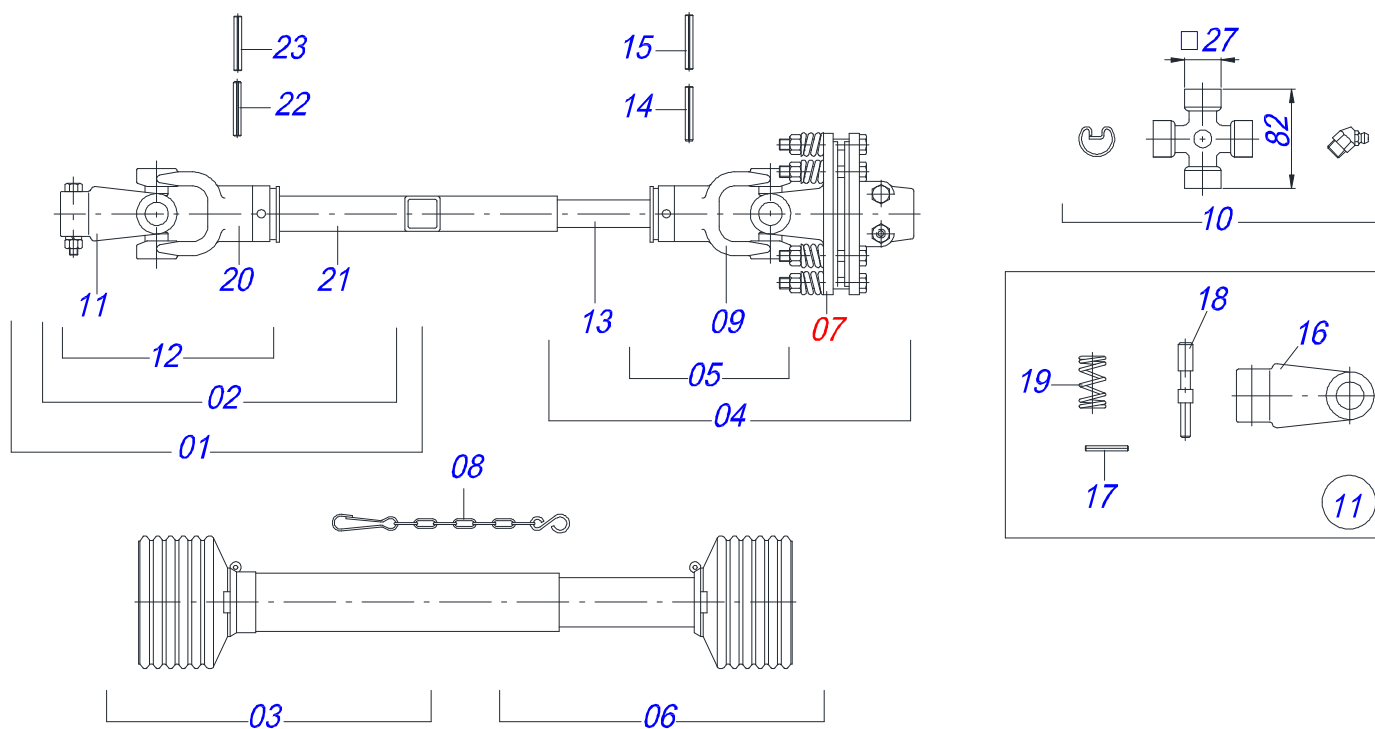
Item	Code	Description	See page	QT
01	0541012143	FLAT WASHER		02
02	0503011239	1/2" X 2" BOLT		03
03	0503010847	1/2" X 3.1/4" BOLT		02
04	0503010589	UNC SELF ADJUSTING NUT 1/2" UNC ALTA G.5 ZN		05
05	0503010060	1/2 UNC G.5 ZN HEX NUT		01
06	0501010161	BOLT 1/2" UNC X 1.1/4" C S G.2 ZN		01
07	0531066119	1.3/4 6E COUPLING FLANGE WITH TERMINAL		01
08	0531066120	1.3/4 6E COUPLING FLANGE WITH BUSHING		01
09	0501310774	COUPLINING		01
10	0501310781	GLOVE		03
11	0501310782	ELASTIC COUPLING RUBBER		06



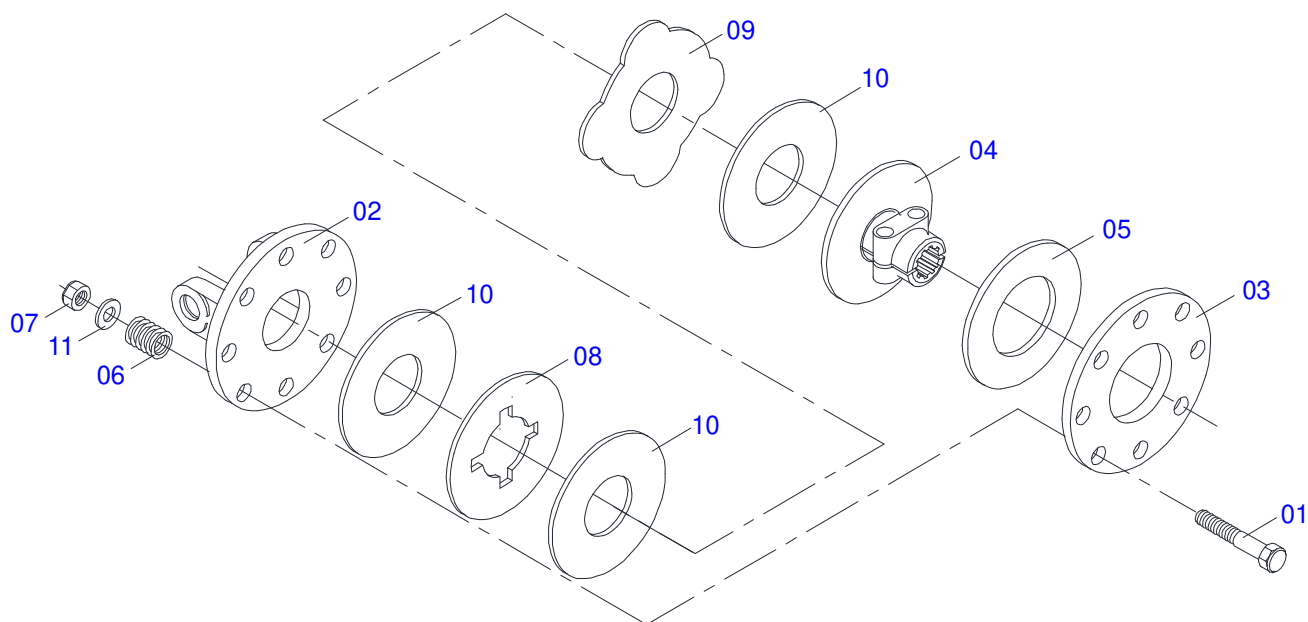
Item	Code	Description	See page	QT
01	0541012143	FLAT WASHER		02
02	0503010847	1/2" X 3.1/4" BOLT		02
03	0503010589	UNC SELF ADJUSTING NUT 1/2" UNC ALTA G.5 ZN		02
04	0503010060	1/2 UNC G.5 ZN HEX NUT		01
05	0501010161	BOLT 1/2" UNC X 1.1/4" C S G.2 ZN		01
06	0511072686			01



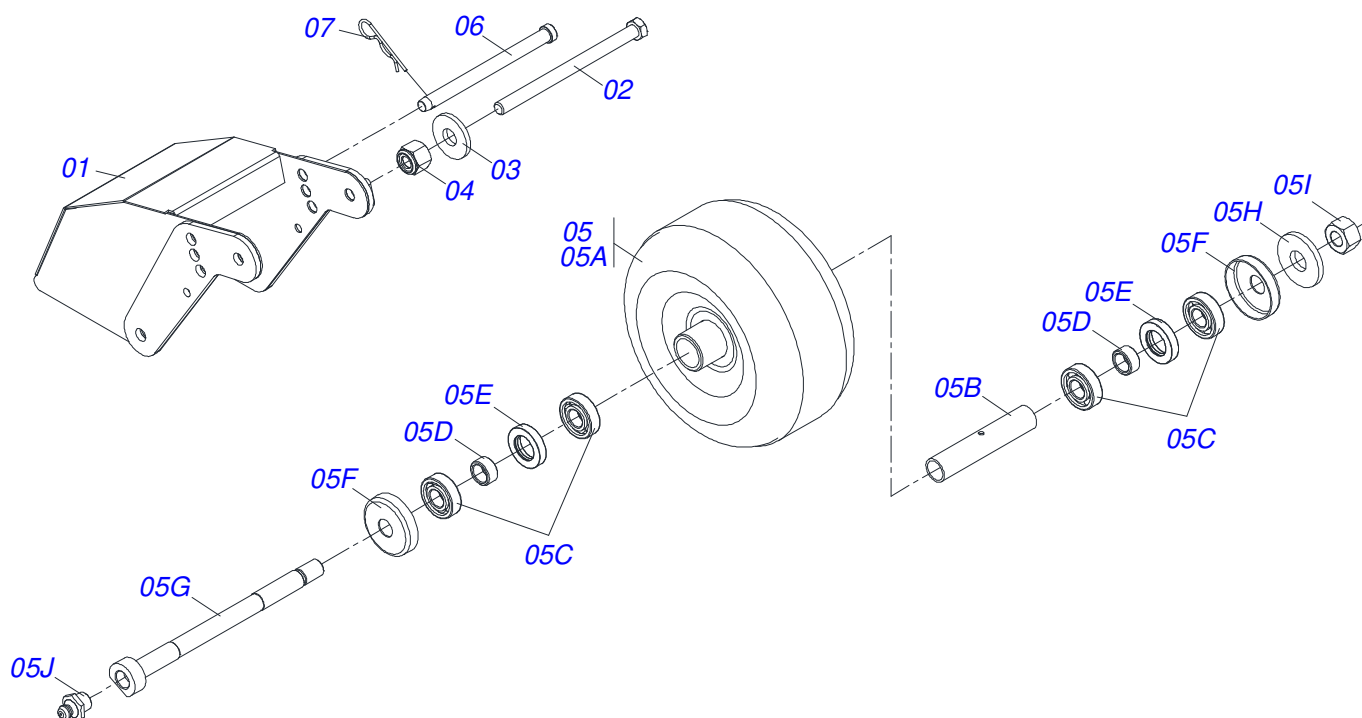
Item	Code	Description	See page	QT
01	0501010984	10,50 X 27 X 3,00 FLAT WASHER		02
02	0501011600	1/2" X 1-1/4" BOLT		04
03	0503010019	1/2" SPRING WASHER		04
04	0503012682	1/2" BSW NUT		04
05	0503013759	NUT		02
06	0511011774	8,00 CHAIN 4 LINK		36
07	0511017302	FLAT WASHER 13,50 X 32,50 X 3,0 ZN		04
08	0591010768	BODY FRONT CURRENT PROTECTION		01
09	0591010769	CURRENT PROTECTION ROD		01



Item	Code	Description	See page	QT
01	0501056228	PROT/SLEEVE UNIVERSAL JOINT		01
02	0501056227	UNIVERSAL JOINT WITH SLEEVE		01
03	0503013619	PROTECTION FOR UNIV JOINT AND SLEEV		01
04	0501056229	UNIVERSAL JOINT WITH AXLE/PROT		01
05	0501056226	UNIVERSAL JOINT WITH SHAFT		01
06	0503013620	PROTECTION FOR UNIV JOINT AND AXLE		01
07	0501056010	FRICTION CLUTCH	13	01
08	0503012023	CHAIN FOR PROTECTION		02
09	0502010571	3-60 TERMINAL W/ SH 1.43"/1.43"		02
10	0503010837	CARDAN CROSSPIECE		01
11	0501056223	TERM 1-60 C/CANAL CC50		01
12	0501056225	UNIVERSAL JOINT		01
13	0541016743	36,51 X 800 SQUARE SHAFT		01
14	0503011069	0.4" X 2.8" SPRING PIN		01
15	0503011805	0.2" X 2.8" SPRING PIN		01
16	0502011421	1-60 TERMINAL		01
17	0503010838	0.1" X 0.8" SPRING PIN		01
18	0521010638	13,70 X 78 HITCH PIN		01
19	0503030518	0.5"X1.0"X 0.1" COMPRESSION SPRING		01
20	0502010570	2-60 TERMINAL W/ SH 1.8"/1.8"		01
21	0541016742	45,3 X Q37,2 SQUARE SLEEVE		01
22	0503010843	0.4" X 3.3" SPRING PIN		01
23	0503011878	0.2" X 3.3" SPRING PIN		01

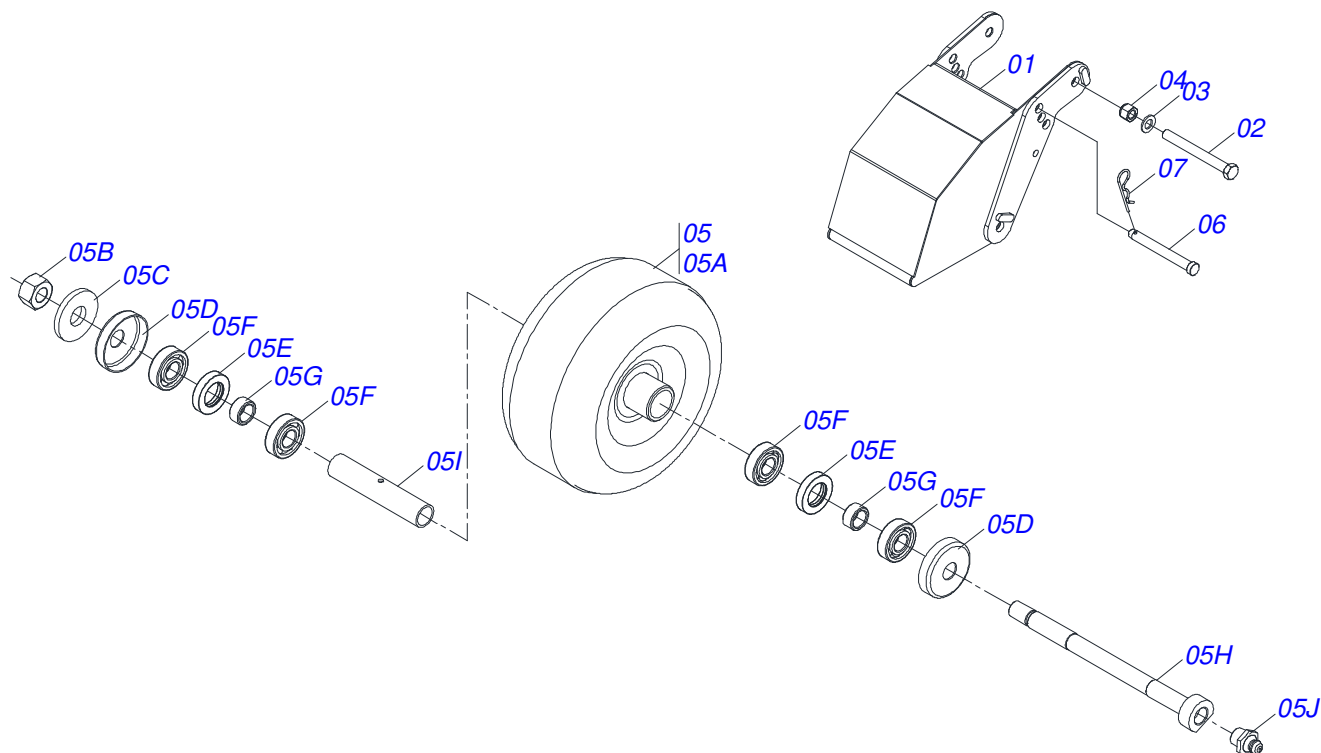


Item	Code	Description	See page	QT
01	0503013564	FRICTION BOLT		08
02	0503013554	FLANGE		01
03	0503013557	COUPLING DISC		01
04	0503013556	CENTRAL CORE		01
05	0503013555	FRICTION DISC		01
06	0503013558	FRICTION SPRING		08
07	0503013559	FRICTION NUT		08
08	0503013561	NOTCHED DISC		01
09	0503013560	INTERMEDIATE DISC		01
10	0503013562	FRICTION DISC		03
11	0503013563	FRICTION WASHER		08

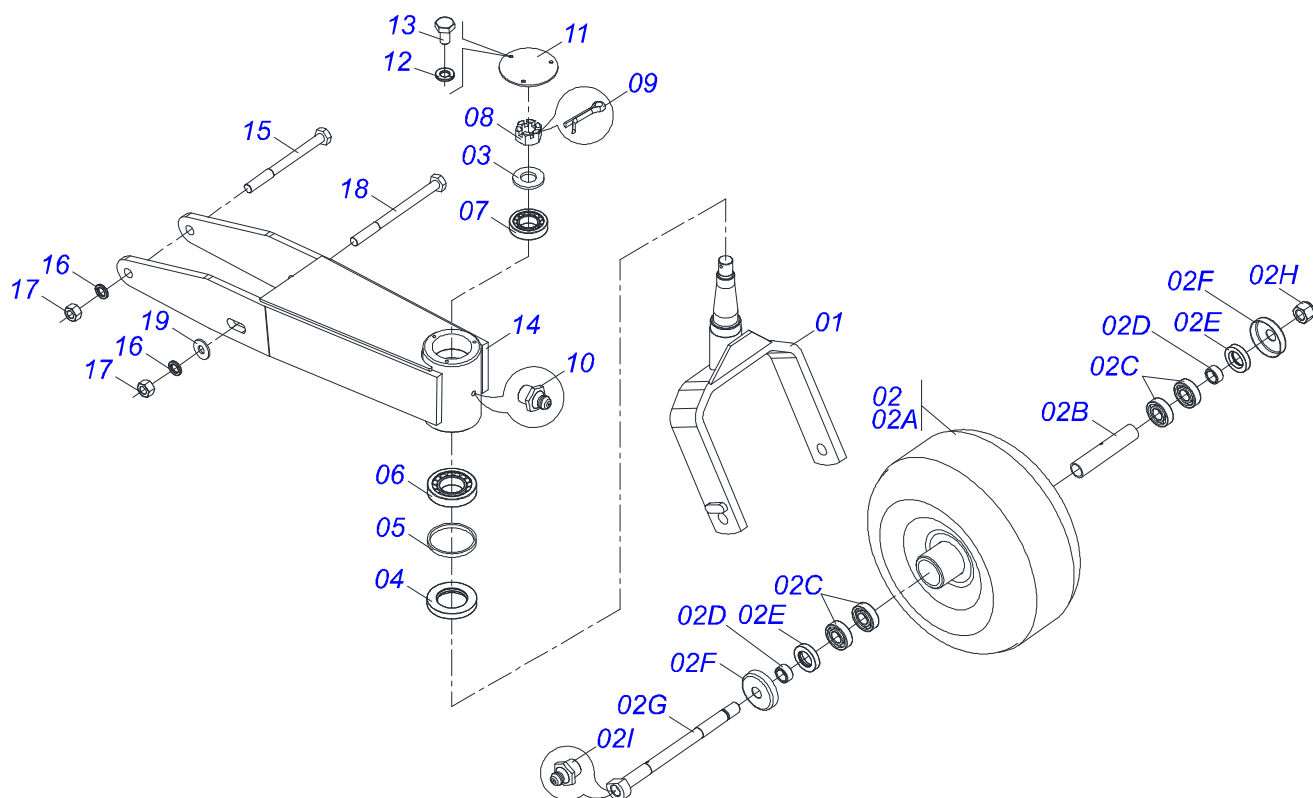


Item	Code	Description	See page	QT
01	0521061648	COVER FRONT WHEEL SUPPORT		01
02	0503012951	3/4" X 10-1/2" BOLT		01
03	0501010941	FLAT WASHER		01
04	0503011075	UNC NUT 3/4 UNC ALTA G.5 ZN		01
05	0501053885	ARM REAR WHELL		01
05A	0511063509	14" X 8" WHELL		01
05B	0531014502	0.9" X 1.1" X 6.3" SLEEVE		01
05C	0503010269	6204 BALL BEARING		04
05D	0521010487	SPACER WASHER		02
05E	0503010268	00262-B SEAL		02
05F	0511014254	DUST CLOAK		02
05G	0551011854	REAR CARRYING WHEELS AXLE		01
05H	0501010941	FLAT WASHER		01
05I	0503011075	UNC NUT 3/4 UNC ALTA G.5 ZN		01
05J	0503010002	1800 GREASE FITTING		01
06	0541018559	REAR WHELL CONTROL AXLE		01
07	0503030012	HITCH PIN CLIP		01
08	1882970002	GREASE		01Kg

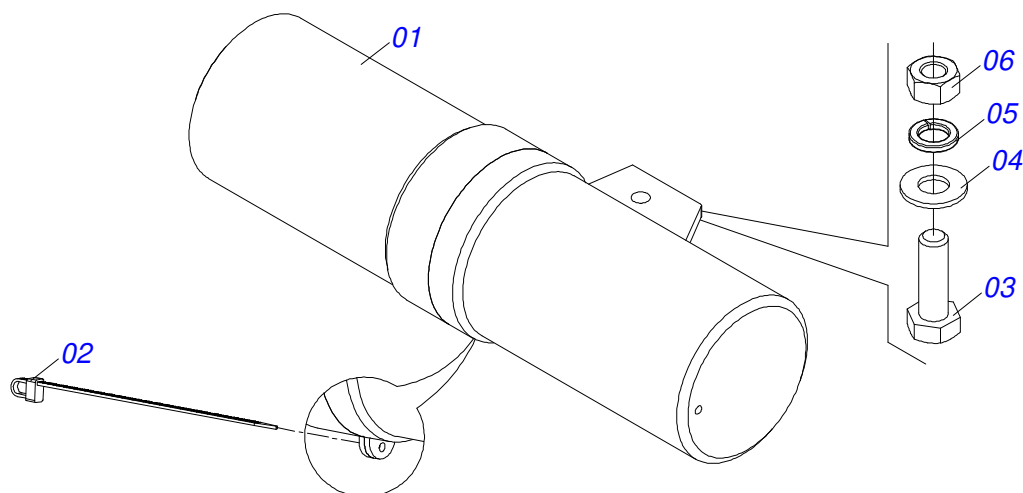
RIGHT FRONT WHEEL WITH FULL PROTECTION



Item	Code	Description	See page	QT
01	0511067120	COVER FRONT WHEEL SUPPORT		01
02	0503012951	3/4" X 10-1/2" BOLT		01
03	0501010941	FLAT WASHER		01
04	0503011075	UNC NUT 3/4 UNC ALTA G.5 ZN		01
05	0501053885	ARM REAR WHELL		01
05A	0511063509	14" X 8" WHELL		01
05B	0503011075	UNC NUT 3/4 UNC ALTA G.5 ZN		01
05C	0501010941	FLAT WASHER		01
05D	0511014254	DUST CLOAK		02
05E	0503010268	00262-B SEAL		02
05F	0503010269	6204 BALL BEARING		04
05G	0521010487	SPACER WASHER		02
05H	0551011854	REAR CARRYING WHEELS AXLE		01
05I	0531014502	0.9" X 1.1" X 6.3" SLEEVE		01
05J	0503010002	1800 GREASE FITTING		01
06	0541018559	REAR WHELL CONTROL AXLE		01
07	0503030012	HITCH PIN CLIP		01



Item	Code	Description	See page	QT
01	0511067159	REAR WHEELS FORK		01
02	0501057218	ARM REAR WHELL		01
02A	0511063509	14" X 8" WHELL		01
02B	0531014502	0.9" X 1.1" X 6.3" SLEEVE		01
02C	0503010269	6204 BALL BEARING		04
02D	0521010487	SPACER WASHER		02
02E	0503010268	00262-B SEAL		02
02F	0511014254	DUST CLOAK		02
02G	0551011854	REAR CARRYING WHEELS AXLE		01
02H	0503011075	UNC NUT 3/4 UNC ALTA G.5 ZN		01
02I	0503010002	1800 GREASE FITTING		01
03	0511015994	FLAT WASHER		01
04	0503010279	SEAL		01
05	0541018986	WASHER		01
06	0503010360	30208 ROLLER BEARING		01
07	0503011290	30206 BEARING		01
08	0503030009	1" CASTLE NUT		01
09	0503010523	1/4" X 2" SPLIT PIN		01
10	0503010002	1800 GREASE FITTING		01
11	0541018995	WHEEL BOX COVER		01
12	0503011441	SPRING WASHER		03
13	0503013758	1/4" X 1-1/2" BOLT		03
14	0511067801	REAR WHEEL SUPPORT		01
15	0503010795	5/8" X 7" BOLT		01
16	0503011445	SPRING WASHER		02
17	0503010013	5/8" UNC G.5 ZN HEX NUT		02
18	0503012410	5/8" X 7.1/2" BOLT		01
19	0501012140	FLAT WASHER 16,50 X 40 X 4,00 ZN		01



Item	Code	Description	See page	QT
01	0503060100	SUPPORT INSTRUCTION MANUAL		01
02	0503010267	NYLON CLAMP 3,60 X 1,3 X 155 MM		01
03	0503010363	BOLT 5/16 UNC X 1 C S G.2 ZN		01
04	0501010694	FLAT WASHER 32,50 X 75 X 4,75		01
05	0503010179	LOCK WASHER 5/16 ZN 1K01528		01
06	0503010337	NUT 5/16 UNC G.5 ZN		01



MARCHESAN

Technical Publications | Elaboration and Revision

ALESSANDRA PATRICIA KAWAHARA CARRILI

www.marchesan.com.br

