

PARTS CATALOG

FRONT LOADER

PD MF 292-4 ADV SHT/BT GAL
S-1104

Code: 0501091532



Series: S-1104

Review: NOVEMBRO/15

ORIGINAL PARTS
TATU

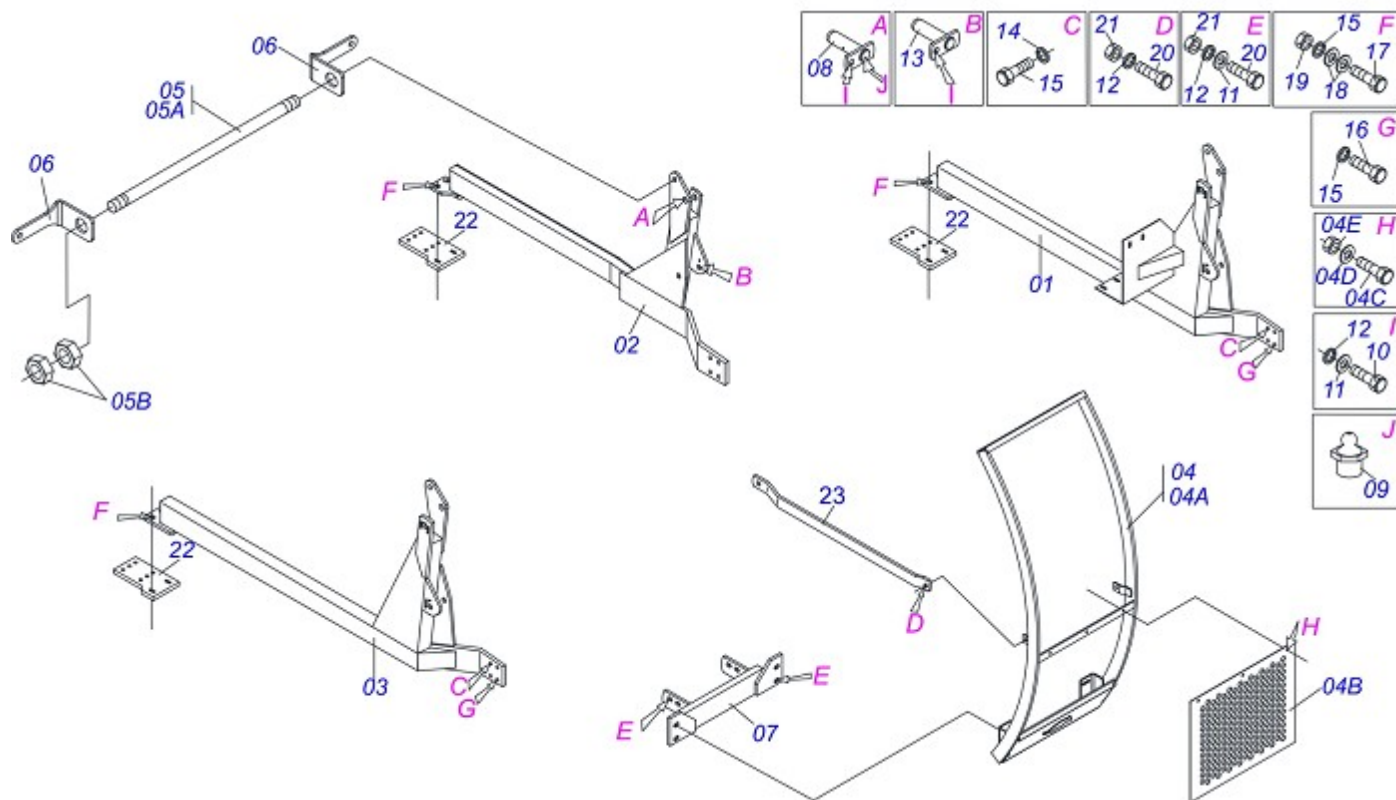


INDEX

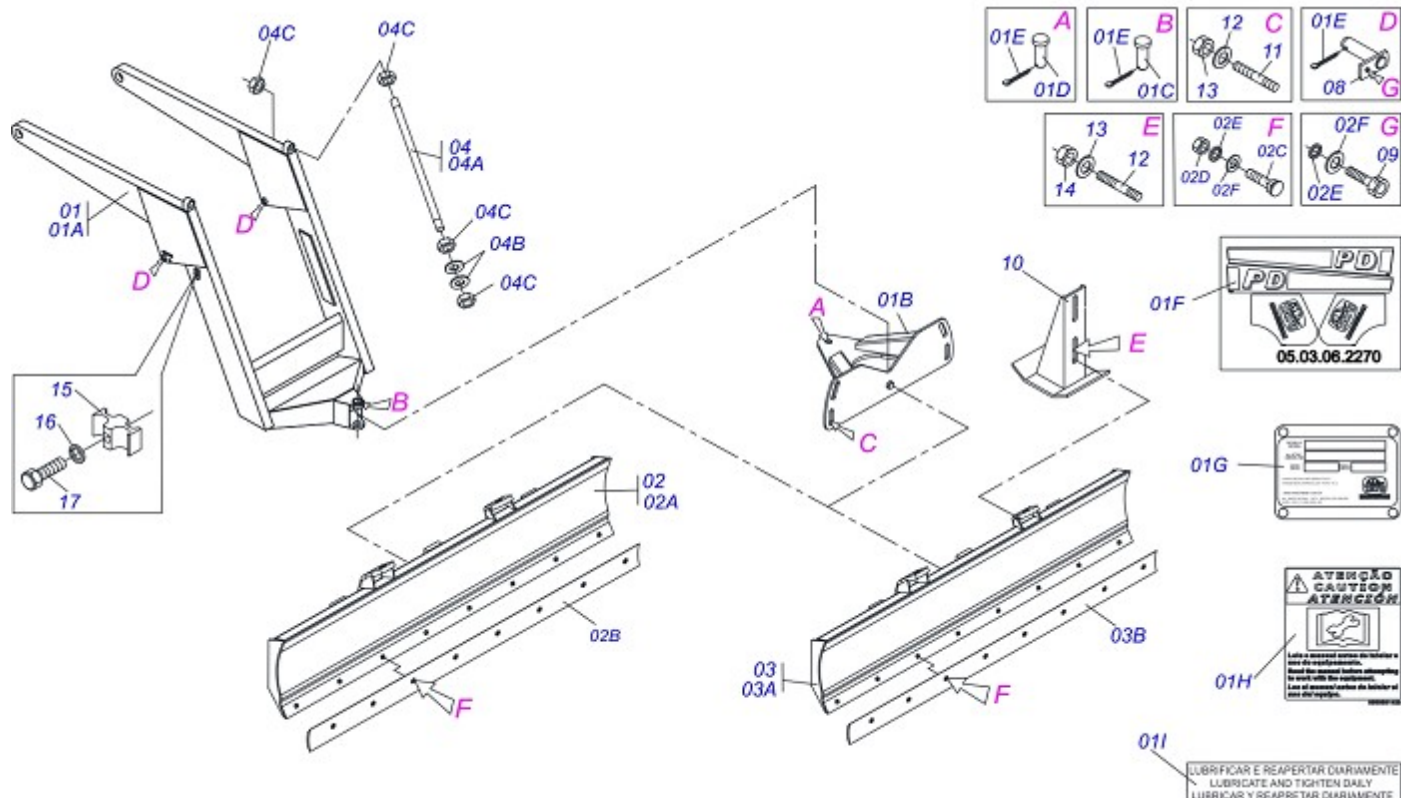
0909090817	CHASSI PD MF 292-4 ADV SHT/BT GAL S-1104	1
0909090818	SUPT.MOVEL MF 292-4 ADV SHT/BT GAL S-1104	2
0909090819	CIRC HIDR MF 292-4 ADV BT/SC S-1104	3
0909090820	CIRC HIDR MF 292-4 ADV BT-CD S-1114	4
0909090821	CIRC.HIDR MF 292-4 ADV SHT S-1114	5
0909091182	HIDRAULIC CILINDER	6

ATTENTION: IMPORTANT

MARCHESAN RESERVES THE RIGHT AT ANY TIME TO MAKE IMPROVEMENTS IN THE DESIGN, MATERIAL OR SPECIFICATIONS OF MACHINERY, EQUIPMENT OR PARTS WITHOUT THEREBY BECOMING LIABLE TO MAKE SIMILAR CHANGES IN MACHINERY, EQUIPMENT OR PARTS PREVIOUSLY SOLD.



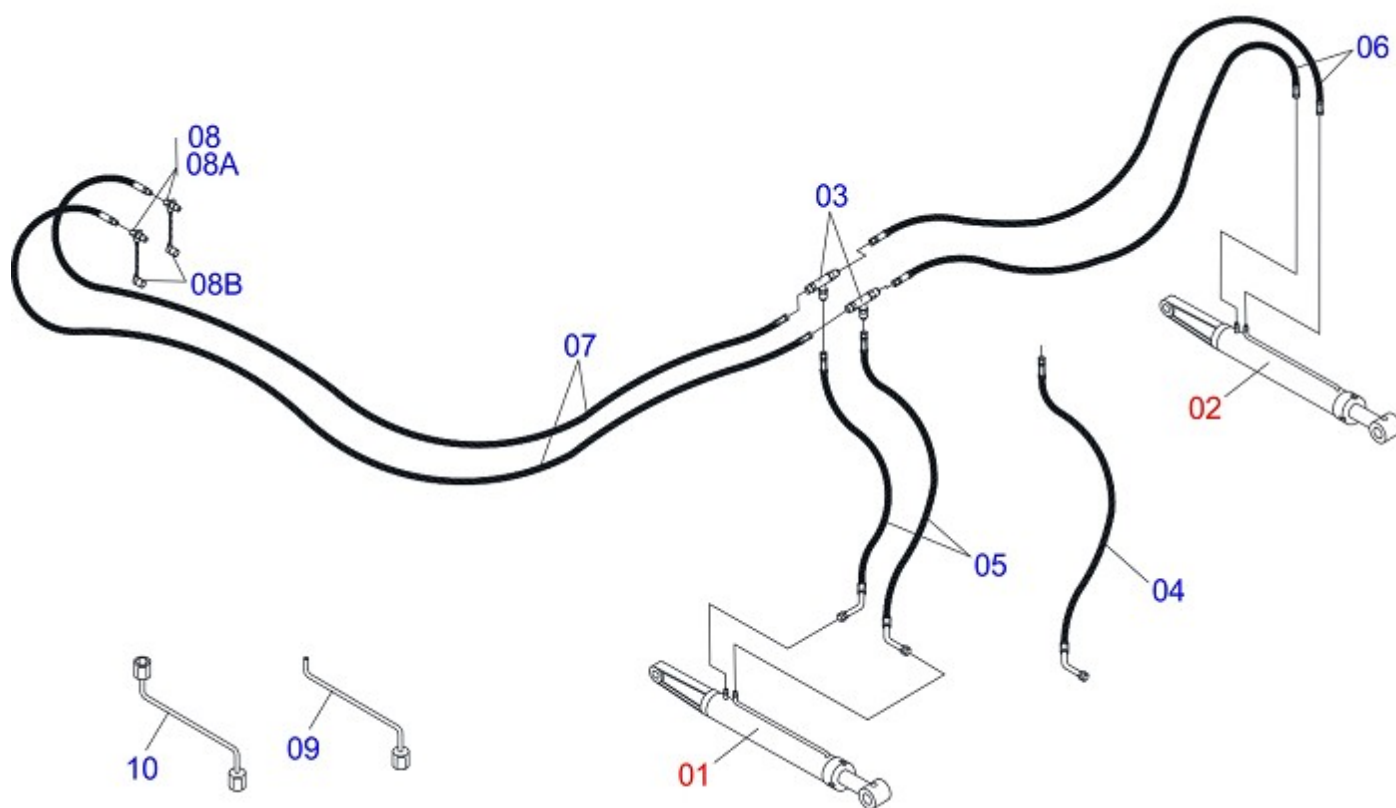
Item	Code	Description	QT
01	0511066563		01
02	0511066564		01
03	0511066513		01
04	0501047978	GUIDE SUPPORT MOBILE HIGH ASSY	01
04A	0501069169	MOBILE SUPPORT GUIDE	01
04B	0501014214		01
04C	0503810751		03
04D	0501810984		03
04E	0503810026		03
05	0501041652	1.1/4" X 31.88" ROD ASSY	01
05A	0501014916	1.1/4" X 31.88" ROD	01
05B	0501810087	1.1/4" UNC NUT	04
06	0561010051		02
07	0501064510		01
08	0501063751	1.5" X 5.5" PIVOT SHAFT	02
09	0503010002		02
10	0503010962	5/8" X 1-1/4" BOLT	04
11	0501012140	FLAT WASHER	18
12	0503010027	5/8" SPRING WASHER	20
13	0501063959	PIVOT SHAFT	02
14	0501010098	3/4" X 2" BOLT	06
15	0503010023	3/4" SPRING WASHER	13
16	0503010901	3/4"X3-1/2"BOLT	02
17	0501010500	3/4" X 3" BOLT	06
18	0501010322	FLAT WASHER	12
19	0503010014	3/4" NUT	06
20	0501010100	5/8" X 2" BOLT	10
21	0503010013		10
22	0501014778	FRAME BRACKET	02
23	0501067701	FRENCH HAND	02



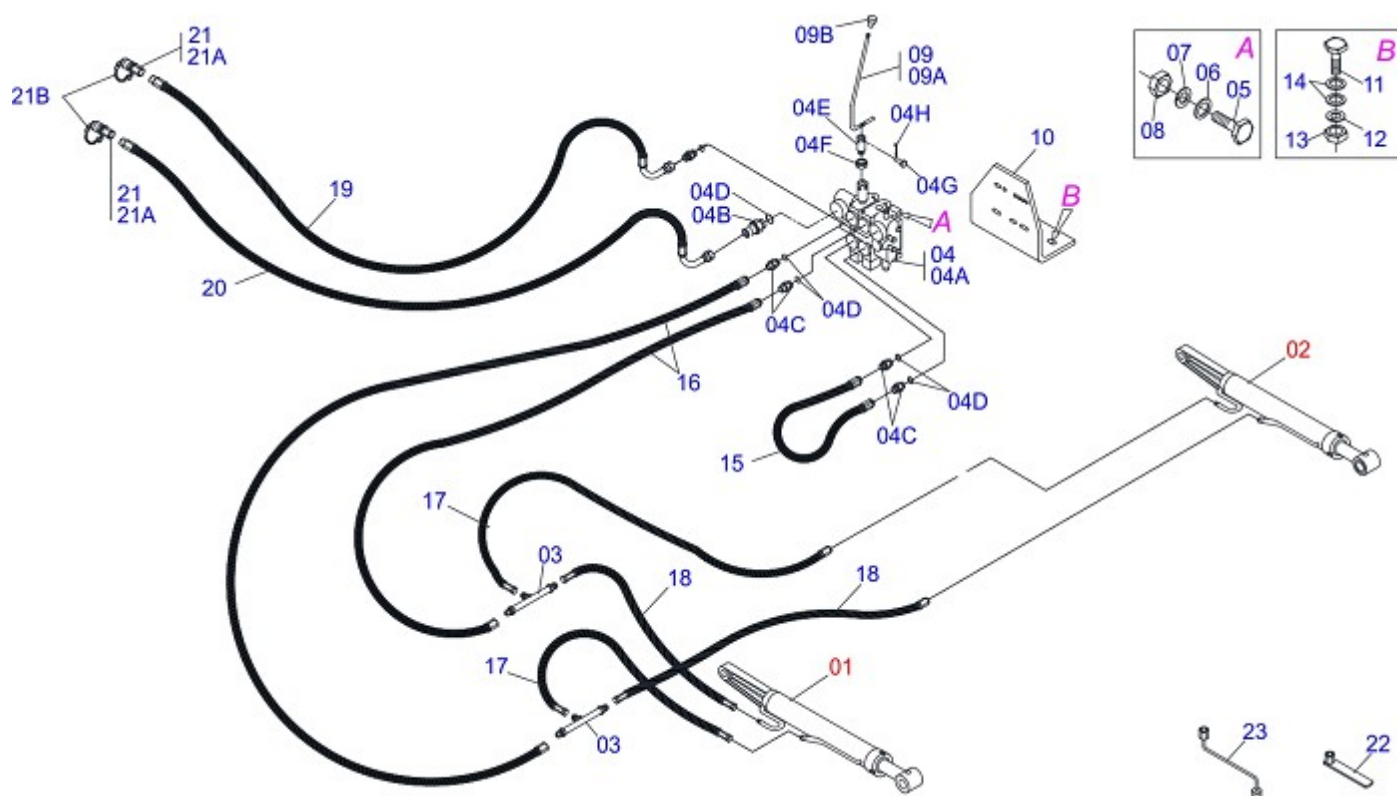
Item	Code	Description	QT
00	0909090818	SUPT.MOVEL MF 292-4 ADV SHT/BT GAL S-1104	01
01	0501042513		01
01A	0501063701		01
01B	0501062637	5/8" REGULATOR SUPPORT	01
01C	0521010618	1.4" X 8.6" COUPLING SHAFT	01
01D	0521010612	1.4" X 3.5" COUPLING SHAFT	01
01E	0503010010	1/4" X 2.1/2" COTTERPIN	02
01F	0503062270	SET LABEL ADHESIVE	01
01G	0503034003		01
01H	0503031428	ADHESIVE LABEL ATTENTION	01
01I	0503031827	ADHESIVE LABEL	01
02	0501047708	2400 BLADE SUPPORT	01
02A	0501067999	2390 BLADE SUPPORT	01
02B	0622360016	94.5" SCRAPER REVERSIBLE	01
02C	0501012240	5/8" X 2-1/2" BOLT	08
02D	0503010013		08
02E	0503010027	5/8" SPRING WASHER	10
02F	0501012140	FLAT WASHER	10
03	0501047710	2600MM BLADE SUPPORT ASSY	01
03A	0501068001	2590MM BLADE SUPPORT ASSY	01
03B	0622360011	2600 SCRAPER REVERSIBLE	01
04	0501041856	1.1/4" NC X 1430 ROD	02
04A	0501014855	1.1/4" X 1430 ROD	02
04B	0502012180	CONICAL SPRING WASHER	02
04C	0501010087	1.1/4" UNC NUT	08
05	0561016755	PRISONER 1 UNC X 1 UNC X 76 ZN	04
06	0501010574	FLAT WASHER	04
07	0501010059	1" NUT HEX	04
08	0501063751	1.5" X 5.5" PIVOT SHAFT	02
09	0503010962	5/8" X 1-1/4" BOLT	02
10	0501063411	STABILIZER BRACKET	02
11	0501010571	3/4 NC X 3/4 NF X 56 PRISONER	04
12	0501010322	FLAT WASHER	08



Item	Code	Description	QT
13	0503010335	3/4" NUT	04



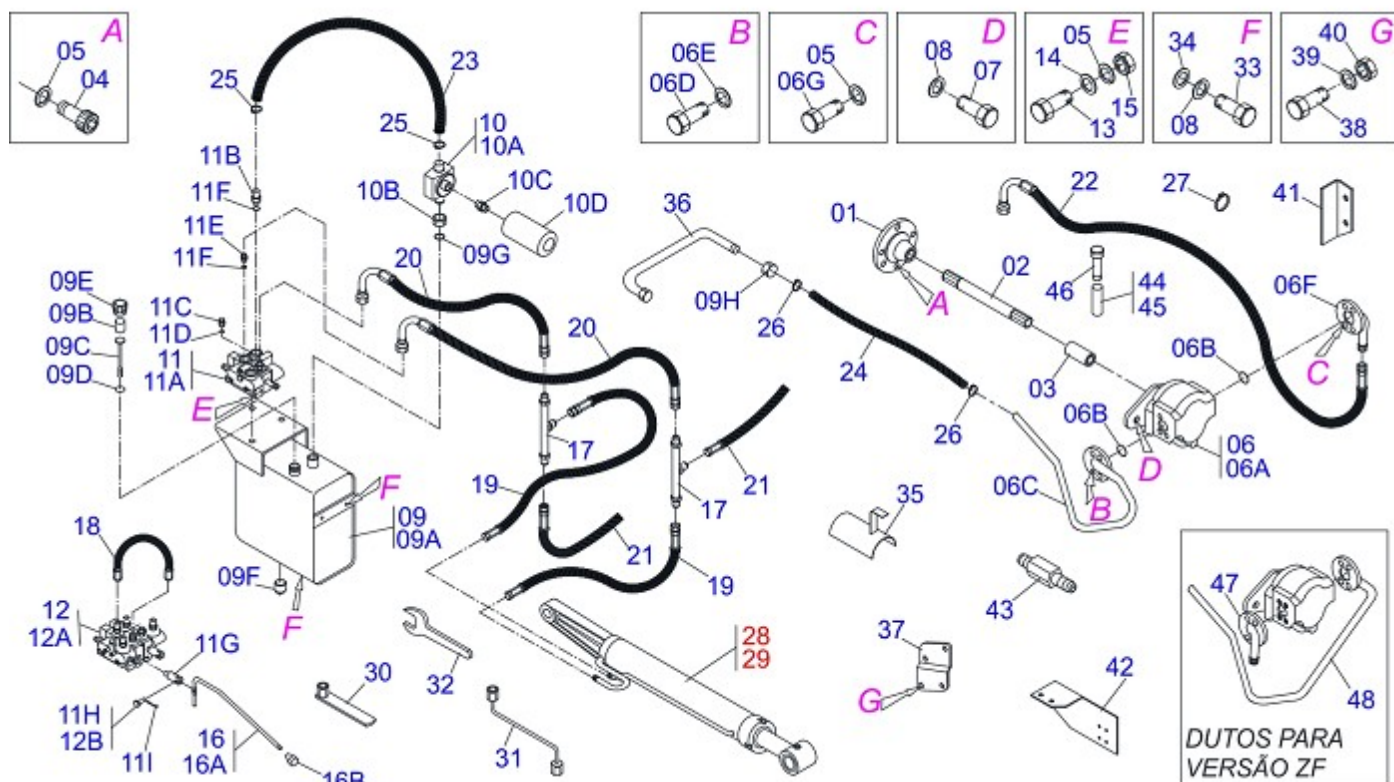
Item	Code	Description	QT
00	0909090819	CIRC HIDR MF 292-4 ADV BT/SC S-1104	01
01	0501046992	HYDRAULIC CYLINDER	01
02	0501046993	HYDRAULIC CYLINDER	01
03	0501068942	"T" CONNECTION NIPPLES	02
04	0501080120	1/2" X 400 TR-TR HOSE	01
05	0501080103	1/2" X 47" TR-TR HOSE ASSY	02
06	0501080300		02
07	0501080075	1/2 X 2400 TR-TM HOSE ASSY	02
08	0501053834	QUICK CONECTION(MALE)1/2NPT	02
08A	0503011627	QUICK CONNECTION (MALE) AGR 1/2 NPT	02
08B	0503011882	QUICK CONNECTION COVER	02
09	0501061617	1" WRENCH CYLINDRICAL HEX	01
10	0501068213	5/8" WRENCH DOUBLE	01



Item	Code	Description	QT
01	0501046992	HYDRAULIC CYLINDER	01
02	0501046993	HYDRAULIC CYLINDER	01
03	0501068942	"T" CONNECTION NIPPLES	02
04	0501048913	3/8" DOUBLE COMMAND ASSY	01
04A	0503060079	3/8" DOUBLE COMMAND VALVE	01
04B	0501011806	1" HOSE NIPPLE	01
04C	0501010590	7/8" HEX NIPPLE	05
04D	0503010045	2-116 N 3006-9B O'RING	06
04E	0503011050	LOWER LEVER	02
04F	0503010337		02
04G	0521010532	0.3" X 0.9" COUPLING SHAFT	02
04H	0503010140		02
05	0501010080	3/8" X 1-1/2" BOLT	03
06	0501010984		03
07	0503010025		03
08	0503010026		03
09	0511040480	CONTROL VALVE	02
09A	0511064635	CONTROL VALVE (PCA)	02
09B	0503030878		02
10	0501014688	SUPPORT CONTROL VALVE	01
11	0503010421	5/16" X 1-1/2" BOLT	02
12	0503010179		02
13	0503010337		02
14	0501011517	FLAT WASHER	04
15	0501080120	1/2" X 400 TR-TR HOSE	01
16	0501080024	1/2" X 700 TR-TR HOSE	02
17	0501080103	1/2" X 47" TR-TR HOSE ASSY	02
18	0501080300		02
19	0501080618		01
20	0501081041		01
21	0501053834	QUICK CONECTION(MALE)1/2NPT	02
21A	0503011627	QUICK CONNECTION (MALE) AGR 1/2 NPT	02
21B	0503011882	QUICK CONNECTION COVER	02



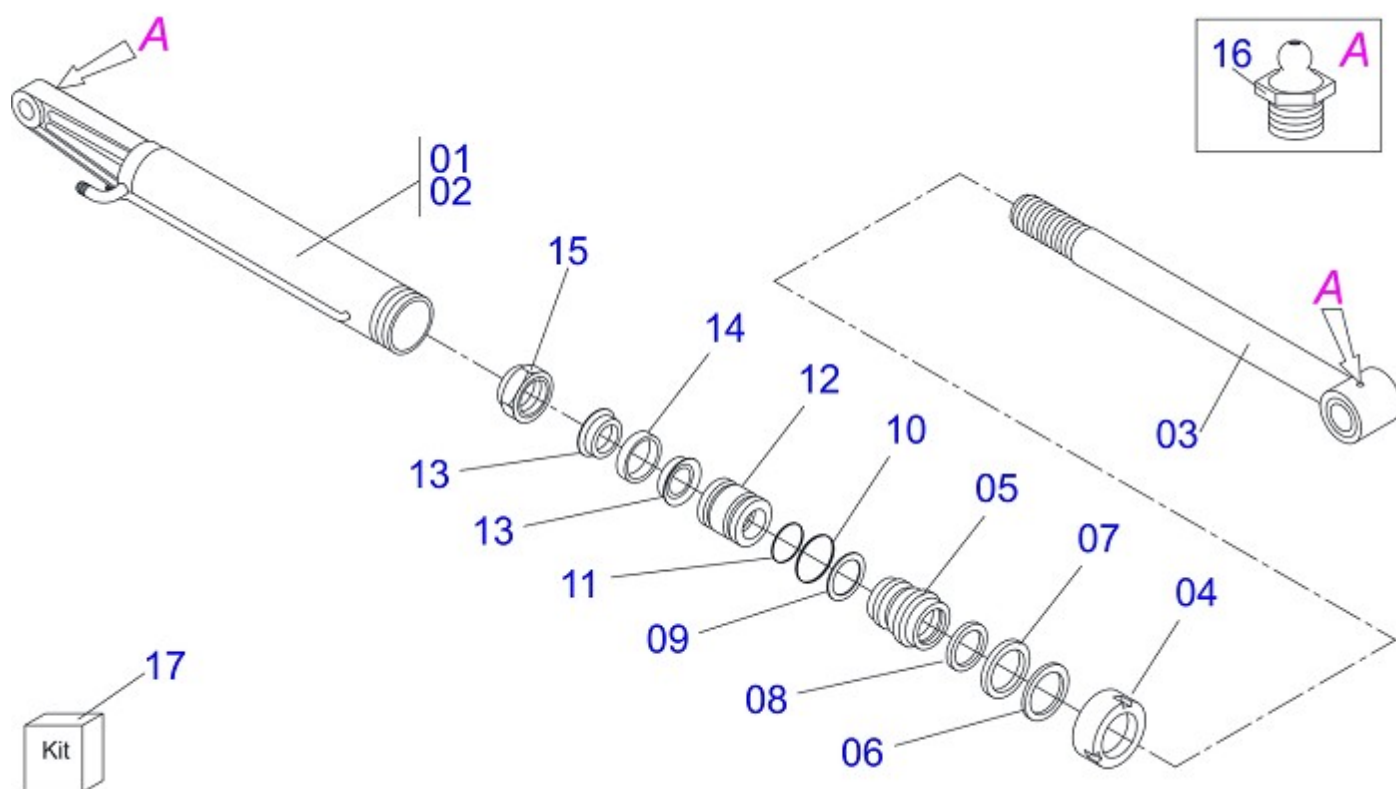
Item	Code	Description	QT
22	0501061617	1" WRENCH CYLINDRICAL HEX	01
23	0501068213	5/8" WRENCH DOUBLE	01



Item	Code	Description	QT
01	0503050003	FLANGE COUPLING	01
02	0501057558		01
03	0503030838	1-1/8" X 2.4" SLEEVE COUPLING	01
04	0503010175	3/8" X 1-1/4" BOLT	06
05	0503010025		13
06	0501046947	PUMP WITH TUBE	01
06A	0503060045	40L 1/2" PUMP	01
06B	0503010173	2-220 N 3006-9B O-RING	02
06C	0501066791	PUMP SUCTION TUBE	01
06D	0503010355	7/16" X 1" BOLT	04
06E	0503010180		04
06F	0501067702	PUMP PRESSURE TUBE	01
06G	0503010237		04
07	0503010920		02
08	0503010019		06
09	0501047807	RESERVOIR OIL ASSY	01
09A	0501068880	RESERVOIR OIL	01
09B	0503030044	FILTERING ELEMENT	01
09C	0501060975	OIL GAGE	01
09D	0503010185	2-221 N 3006-9B O-RING	01
09E	0502020472	TANK COVER BODY	01
09F	0503031604	1/2" BSP PLUG	01
09G	0503010046	2-216 N 3006-9B O-RING	01
09H	0501016309	2" 1X 2.5/16" NUT	01
10	0501041108	RETURNING FILTER ASSY	01
10A	0502050002	RETURNING FILTER HEAD	01
10B	0501010594	1" NUT HEX	01
10C	0501010595	1" NF NIPPLE	01
10D	0503010183	RETURNING FILTER	01
11	0501040871	1/2" COMMAND SIMPLE ASSY	01
11A	0503060080	1/2" COMMAND SIMPLE	01
11B	0501010591	HOSE NIPPLE	01
11C	0501010589	1-1/16 NIPPLE	01



Item	Code	Description	QT
11D	0503010602	2-211 N 3006-9B O'RING	02
11E	0501010590	7/8" HEX NIPPLE	02
11F	0503010045	2-116 N 3006-9B O'RING	02
11G	0503030347	UPPER LEVER ASSY (SAUER DANFOSS)	02
11H	0501010593	0.3" X 1" X 1/2" X 1.1 PIN	01
11L	0503010140		02
12	0501041627	1/2" DOUBLE COMMAND	01
12A	0503060016	1/2"DOUBLE COMMAND	01
12B	0521010533	0.3" X 1" COUPLING SHAFT	01
13	0501010080	3/8" X 1-1/2" BOLT	03
14	0501010984		03
15	0503010026		03
16	0501047446	CONTROL VALVE (P/COM 1/2 PCA)	02
16A	0501068681	1/2" CONTROL VALVE	02
16B	0503030878		02
17	0501068942	"T" CONNECTION NIPPLES	02
18	0501080120	1/2" X 400 TR-TR HOSE	01
19	0501080024	1/2" X 700 TR-TR HOSE	02
20	0501080103	1/2" X 47" TR-TR HOSE ASSY	02
21	0501080021	1/2" X 51" TR-TR HOSE ASSY	02
22	0501080061	1/2 X 1700 TR-TC HOSE ASSY	02
22A	0501080626	3/4" X 2900" TR-TC HOSE	01
23	0501010610	1" X 800 AB-AB HOSE	01
24	0541016748		01
25	0503010184	1-1/4" TO 1-1/2" CLAMP	02
26	0503010243	1-1/2" TO 2" CLAMP	02
27	0503010246	2" TO 2 1/2" CLAMP	02
28	0501046992	HYDRAULIC CYLINDER	01
29	0501046993	HYDRAULIC CYLINDER	01
30	0501068213	5/8" WRENCH DOUBLE	01
31	0511010153	2-5/16" FIXED WRENCH	01
32	0501061617	1" WRENCH CYLINDRICAL HEX	01
33	0501010161	1/2" X 1-1/4" BOLT	04
34	0511017302		04
35	0511064563	HOSE PROTECTION	01
36	0501063383	TANK OUTER TUBE	01
37	0511017074	SUPPORT CONDUCTOR TANK	01
38	0503010294	1/4" X 7/8" BOLT	02
39	0503010143	1/4" SPRING WASHER	02
40	0503010144	1/4" NUT	02
41	0561010051		02
42	0521017643	SUPPORT FILTER HIDRAULIC	01
43	0521014428	EXTENSION HEX	02
44	0541015550	0.5" X 0.63" X 1.9" SLEEVE	02
45	0541015551	0.39" X 0.512" X 1.9" SLEEVE	02
46	0503010765	3/8" X 3" BOLT	02
47	0501069536	PUMP SUCTION TUBE	01
48	0501069661	PUMP PRESSURE TUBE	01
49	0503011332	5/16" X 2-3/4" BOLT	02



Item	Code	Description	
00	0501046992	HYDRAULIC CYLINDER	01
00A	0501046993	HYDRAULIC CYLINDER	01
01	0501068206	RIGHT 85,72 X 855 CYLINDER CASE	01
02	0501068207	LEFT 85,72 X 855 CYLINDER CASE	01
03	0501068208	44,45 X 670 TURNBUCKLE	01
04	0502010993	DETACHABLE COVER	01
05	0502010781	RING SUPPORT	01
06	0503010761	D-1750 SCRAPER RING	01
07	0503010990	GASKET	01
08	0503010949	W2-2000-500 PK RING G.E	01
09	0503011060	8-336 BACK-UP RING	01
10	0503010976	2-336 N 3006-9B O'RING	01
11	0503010042	2-214 N 3006-9B O'RING	01
12	0502010843	1.8" X 3.4" PISTON	01
13	0503010170	PACKING 3120 2750	02
14	0503010948	W4-3346-590 PK RING G.E	01
15	0503010063	1" SELF-ALIGNING NUT	01
16	0503010002		02



MARCHESAN

MARCHESAN IMPLEMENTOS E MÁQUINAS AGRÍCOLAS TATU S.A.

AV. Marchesan, 1979 - Post office box, 131 - CEP 15994-900 - Matão - SP - Brazil

Phone +55 16.3382-8282

(FAX Parts) + 55 16.3382. 8297 - (Export) + 55 16.3382.1003

e.mail: tatu@marchesan.com.br www.marchesan.com.br

*Drafting and Illustration = GASPARI
e.mail = jgaspari@marchesan.com.br*

**ORIGINAL PARTS
TATU**



MARCHESAN