

PARTS CATALOG

FRONT LOADER

PD MF 4297/4299-4 SHT/BT GAL
S-0710

Code: 0501091531



Series: S-0710

Review: NOVEMBRO/15

ORIGINAL PARTS
TATU

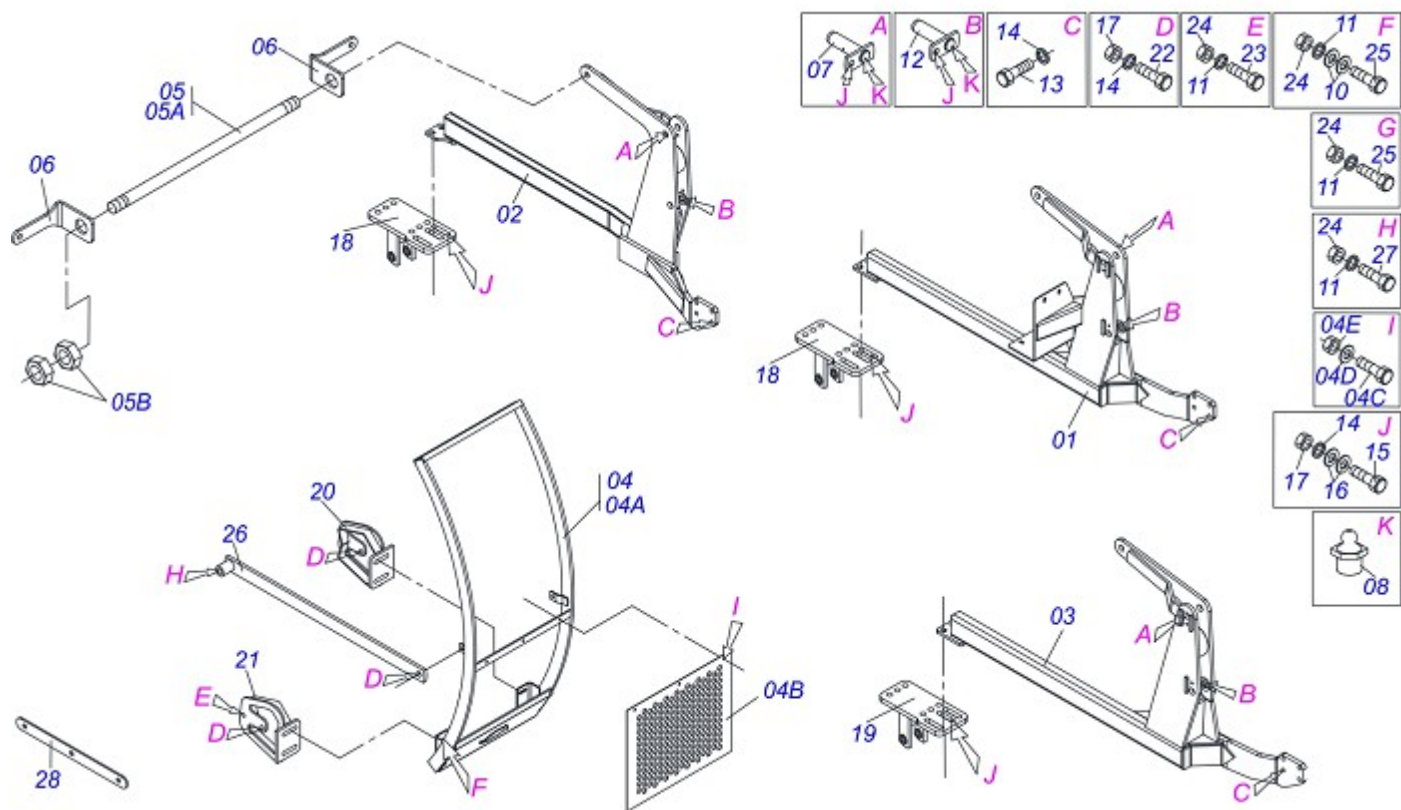


INDEX

0909090811	CHASSI PD 4297/4299-4 SHT/BT GAL S-0710	1
0909090812	SUPT MOVEI MF 4297/4299-4 SHT/BT GAL S-0710	2
0909090815	CIRC HIDR MF 4297/4299-4 BT S-0710	3
0909090816	CIRC HIDR MF 4297/4299-4 SHT TC ZF S-0710	4
0909090760	CIL.HIDR.44,45X85,7X1010X400 DIR/ESQ.	5

ATTENTION: IMPORTANT

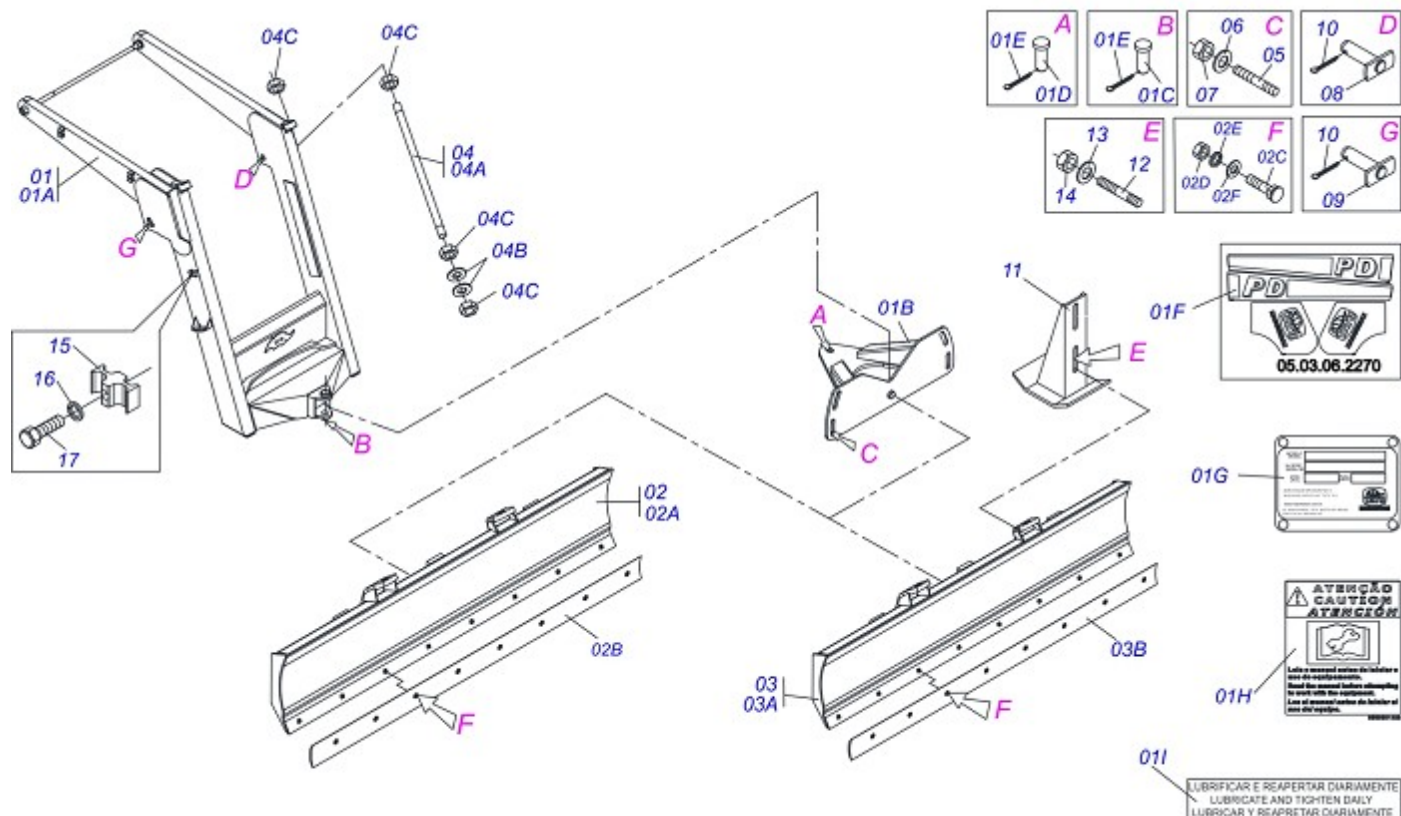
MARCHESAN RESERVES THE RIGHT AT ANY TIME TO MAKE IMPROVEMENTS IN THE DESIGN, MATERIAL OR SPECIFICATIONS OF MACHINERY, EQUIPMENT OR PARTS WITHOUT THEREBY BECOMING LIABLE TO MAKE SIMILAR CHANGES IN MACHINERY, EQUIPMENT OR PARTS PREVIOUSLY SOLD.



Item	Code	Description	QT
01	0521061678		01
02	0521061670		01
03	0521061669		01
04	0511049956	MOBILE SUPPORT GUIDE ASSY	01
04A	0521062696	GUIDE SUPPORT MOBILE	01
04B	0501017431	FRONT PROTECTION	01
04C	0503010751	3/8" X 1.1/4" HEX BOLT G.5	03
04D	0501010984		03
04E	0503010026		03
05	0511043351	1.1/4" X 40" ROD	01
05A	0541015018		01
05B	0501010087	1.1/4" UNC NUT	04
06	0561010051		02
07	0501063751	1.5" X 5.5" PIVOT SHAFT	02
08	0503010002		02
09	0503010962	5/8" X 1-1/4" BOLT	04
10	0501012140	FLAT WASHER	08
11	0503010027	5/8" SPRING WASHER	10
12	0501063960	37,2 X 130 PIVOT SHAFT LOCK	02
13	0503013390	3/4" UNC BOLT	12
14	0503010023	3/4" SPRING WASHER	10
15	0501010500	3/4" X 3" BOLT	04
16	0501010322	FLAT WASHER	08
17	0503010014	3/4" NUT	06
18	0511069461		01
19	0511069462		01
20	0521061644		01
21	0521061643		01
22	0503011322	M20 X 2" BOLT	02
23	0501010100	5/8" X 2" BOLT	02
24	0503010013		06
25	0503010233		04
26	0521063340		02



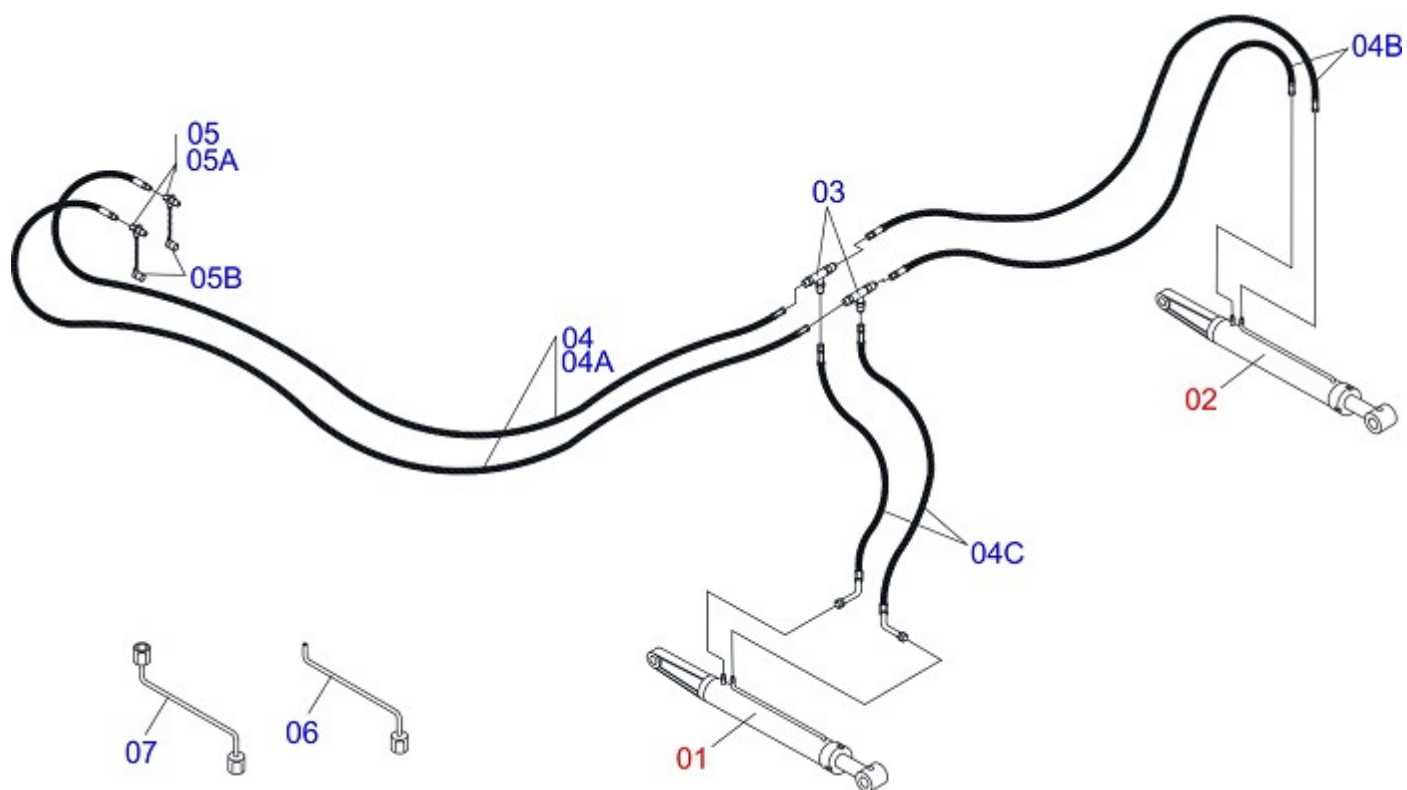
Item	Code	Description	QT
27	0503016110	5/8 UNC X 4 BOLT	02
28	0561016347		02



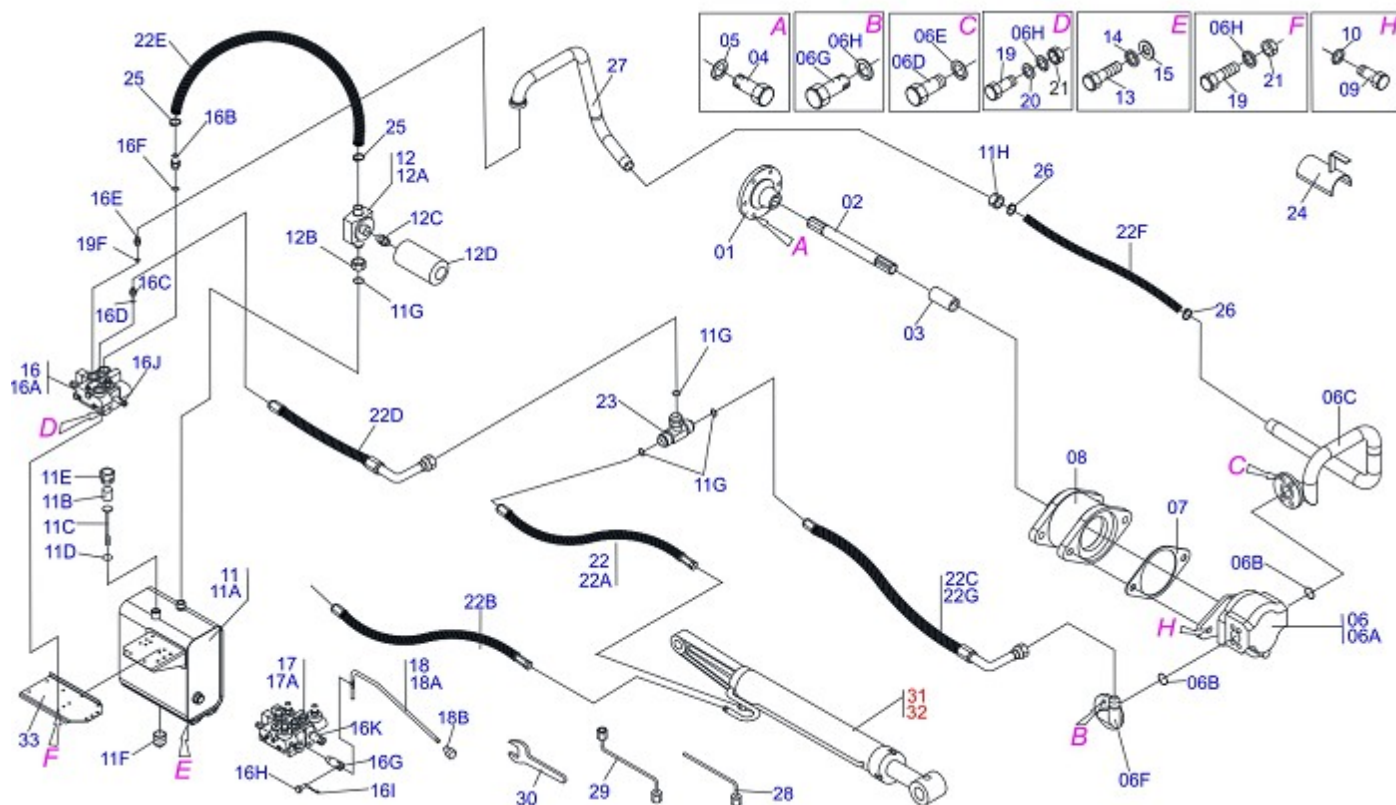
Item	Code	Description	QT
00	0909090812	SUPT MOVEL MF 4297/4299-4 SHT/BT GAL S-0710	01
01A	0521062701		01
01B	0501062637	5/8" REGULATOR SUPPORT	01
01C	0521010618	1.4" X 8.6" COUPLING SHAFT	01
01D	0521010612	1.4" X 3.5" COUPLING SHAFT	01
01E	0503010010	1/4" X 2.1/2" COTTERPIN	02
01F	0503062270	SET LABEL ADHESIVE	01
01G	0503034003		01
01H	0503031428	ADHESIVE LABEL ATTENTION	01
01I	0503031827	ADHESIVE LABEL	01
02	0501047708	2400 BLADE SUPPORT	01
02A	0501067999	2390 BLADE SUPPORT	01
02B	0622360016	94.5" SCRAPER REVERSIBLE	01
02C	0501012240	5/8" X 2-1/2" BOLT	08
02D	0503010013		08
02E	0503010027	5/8" SPRING WASHER	08
02F	0501012140	FLAT WASHER	08
03	0501047710	2600MM BLADE SUPPORT ASSY	01
03A	0501068001	2590MM BLADE SUPPORT ASSY	01
03B	0622360011	2600 SCRAPER REVERSIBLE	01
04	0501041427	1.1/4" NC X 1540 ROD	02
04A	0501014250	1.1/4" X 1540 ROD	02
04B	0502012180	CONICAL SPRING WASHER	04
04C	0501010087	1.1/4" UNC NUT	08
05	0561016755	PRISONER 1 UNC X 1 UNC X 76 ZN	04
06	0501010574	FLAT WASHER	04
07	0501010059	1" NUT HEX	04
08	0521063354	COUPLING SHAFT	01
09	0521063358		01
10	0503010534	3/8" X 2-1/2" COTTERPIN	02
11	0501063411	STABILIZER BRACKET	02
12	0561016756	3/4 UNC X 3/4 UNC X 56 PRISONER	04
13	0501010322	FLAT WASHER	04



Item	Code	Description	QT
14	0503010014	3/4" NUT	04
15	0502012702	BODY SUPPORT CLAMP	03
16	0503012555	7/16" X 2" BOLT	03
17	0503010180		03



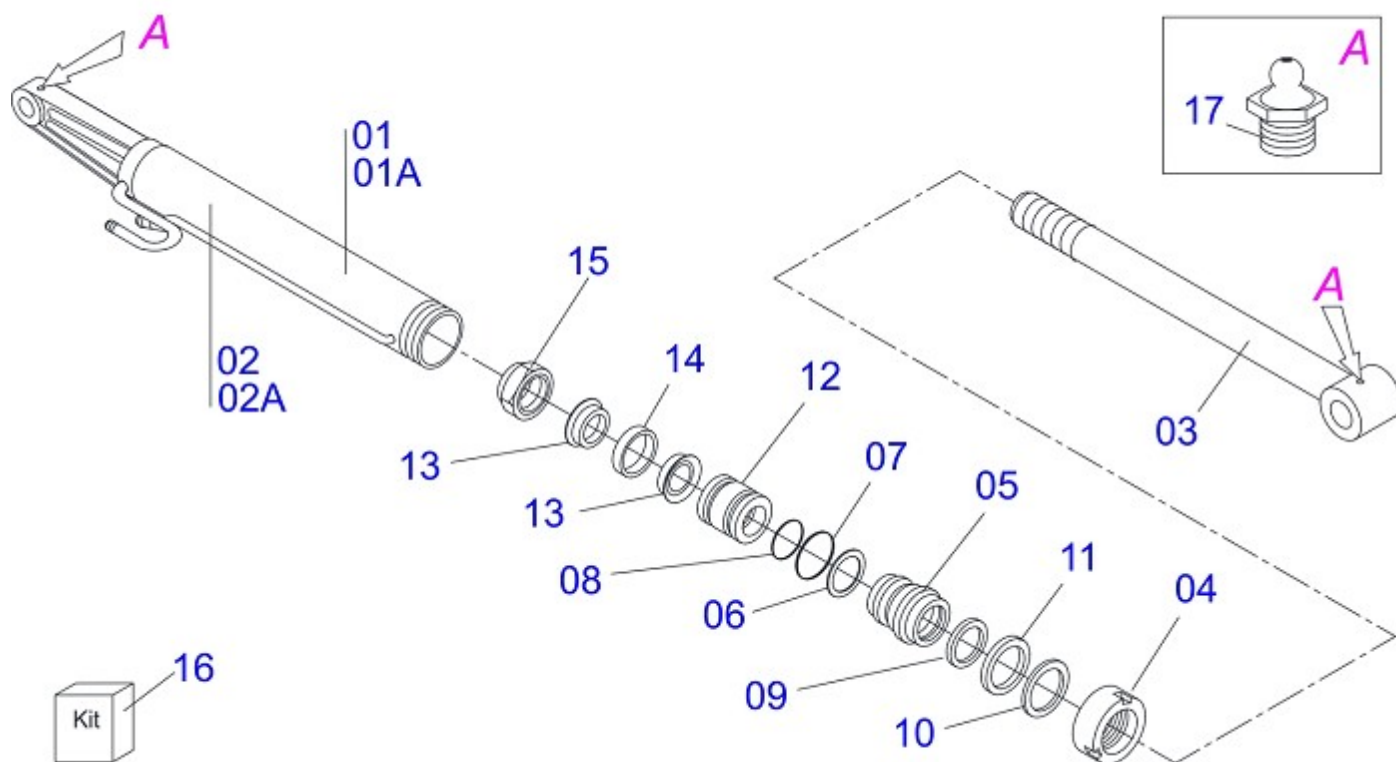
Item	Code	Description	QT
00	0909090815	CIRC HIDR MF 4297/4299-4 BT S-0710	01
01	0501046992	HYDRAULIC CYLINDER	01
02	0501046993	HYDRAULIC CYLINDER	01
03	0503013493	T CONNECTION MALE	02
04	0501059989		01
04A	0501080076	1/2" X 2500 TR-TM HOSE ASSY	02
04B	0501080014	1/2" X 1000" TR-TR HOSE	02
04C	0501080603	1/2" X 2100" TR-TR HOSE	02
05	0501053834	QUICK CONECTION(MALE)1/2NPT	02
05A	0503011627	QUICK CONNECTION (MALE) AGR 1/2 NPT	02
05B	0503011882	QUICK CONNECTION COVER	02
06	0501061617	1" WRENCH CYLINDRICAL HEX	01
07	0501068213	5/8" WRENCH DOUBLE	01



Item	Code	Description	ZF
01	0501067327	FLANGE COUPLING	01
02	0503030838	1-1/8" X 2.4" SLEEVE COUPLING	01
03	0521061968		01
04	0503011313	M8 X 2" BOLT	06
05	0503010180		06
06	0501059935		01
06A	0503061770	PUMP WITH TUBE	01
06B	0503010173	2-220 N 3006-9B O'RING	02
06C	0521061552		01
06D	0503010355	7/16" X 1" BOLT	04
06E	0503011446		04
06F	0501069661	PUMP PRESSURE TUBE	01
06G	0503010134	3/8" X 1" BOLT	04
06H	0503010025		10
07	0561016191		01
08	0511069929		01
09	0503010752	1/2" X 3.1/2" BOLT	02
10	0503010019		02
11	0501047575	RESERVOIR OIL ASSY	01
11A	0501068685	RESERVOIR OIL	01
11B	0503030044	FILTERING ELEMENT	01
11C	0501060975	OIL GAGE	01
11D	0503010185	2-221 N 3006-9B O'RING	01
11E	0502020472	TANK COVER BODY	01
11F	0503031604	1/2" BSP PLUG	01
11G	0503010046	2-216 N 3006-9B O'RING	05
11H	0501016309	2" 1X 2.5/16" NUT	01
12	0501041108	RETURNING FILTER ASSY	01
12A	0502050002	RETURNING FILTER HEAD	01
12B	0501010594	1" NUT HEX	01
12C	0501010595	1" NF NIPPLE	01
12D	0503010183	RETURNING FILTER	01
13	0501010161	1/2" X 1-1/4" BOLT	04



Item	Code	Description	ZF
14	0503010019		04
15	0511017302		04
16	0501040871	1/2" COMMAND SIMPLE ASSY	01
16A	0503060080	1/2" COMMAND SIMPLE	01
16B	0501010591	HOSE NIPPLE	01
16C	0501010589	1-1/16 NIPPLE	01
16D	0503011109	2-119 N 3006-9B O'RING	02
16E	0501010590	7/8" HEX NIPPLE	02
16F	0503010045	2-116 N 3006-9B O'RING	02
16G	0503030347	UPPER LEVER ASSY (SAUER DANFOSS)	01
16H	0521010533	0.3" X 1" COUPLING SHAFT	01
16I	0503010140		01
16J	0503030387	PLUG CYLINDRICAL	02
16K	0503030388	PLUG CYLINDRICAL	01
17	0501059952		01
17A	0503060016	1/2"DOUBLE COMMAND	01
18	0501048023	CONTROL VALVE	02
18A	0511060695	CONTROL VALVE	02
18B	0503030878		02
19	0501010080	3/8" X 1-1/2" BOLT	06
20	0501010984		06
21	0503010026		06
22	0511050034		01
22A	0501081384		02
22B	0501080022	1/2" X 43" TR-TR HOSE ASSY	02
22C	0501080062	1/2" X 2000" TR-TC HOSE	02
22D	0501081077	3/4" X 3100 TC-TC HOSE ASSY	01
22E	0501010610	1" X 800 AB-AB HOSE	01
22F	0551012897		01
22G	0501080825	1/2" X 1100 TR-TC HOSE	02
23	0503013493	T CONNECTION MALE	02
24	0511064563	HOSE PROTECTION	01
25	0503010184	1-1/4" TO 1-1/2" CLAMP	02
26	0503010243	1-1/2" TO 2" CLAMP	02
27	0521061677		01
28	0501061617	1" WRENCH CYLINDRICAL HEX	01
29	0501068213	5/8" WRENCH DOUBLE	01
30	0511010153	2-5/16" FIXED WRENCH	01
31	0501046992	HYDRAULIC CYLINDER	01
32	0501046993	HYDRAULIC CYLINDER	01
33	0561016462		01



Item	Code	Description	QT
00	0909090760	CIL.HIDR.44,45X85,7X1010X400 DIR/ESQ.	01
01	0501046992	HYDRAULIC CYLINDER	01
01A	0501046993	HYDRAULIC CYLINDER	01
02	0501068207	LEFT 85,72 X 855 CYLINDER CASE	01
02A	0501068206	RIGHT 85,72 X 855 CYLINDER CASE	01
03	0501068208	44,45 X 670 TURNBUCKLE	01
04	0502010993	DETACHABLE COVER	01
05	0502010781	RING SUPPORT	01
06	0503010761	D-1750 SCRAPER RING	01
07	0503010990	GASKET	01
08	0503010949	W2-2000-500 PK RING G.E	01
09	0503011060	8-336 BACK-UP RING	01
10	0503010979	2-336 N 3006-9B O'RING	01
11	0503010042	2-214 N 3006-9B O'RING	01
12	0502010843	1.8" X 3.4" PISTON	01
13	0503010170	PACKING 3120 2750	02
14	0503010948	W4-3346-590 PK RING G.E	01
15	0503010063	1" SELF-ALIGNING NUT	01
16	0503030387	PLUG CYLINDRICAL	02
17	0503010002		02



MARCHESAN

MARCHESAN IMPLEMENTOS E MÁQUINAS AGRÍCOLAS TATU S.A.

AV. Marchesan, 1979 - Post office box, 131 - CEP 15994-900 - Matão - SP - Brazil

Phone +55 16.3382-8282

(FAX Parts) + 55 16.3382. 8297 - (Export) + 55 16.3382.1003

e.mail: tatu@marchesan.com.br www.marchesan.com.br

*Drafting and Illustration = GASPARI
e.mail = jgaspari@marchesan.com.br*

**ORIGINAL PARTS
TATU**



MARCHESAN