

PARTS CATALOG

FRONT LOADER

PD MF 292-4 ADV S-0902

Code: 0501091399



Series: S-0902

Review: NOVEMBRO/02

ORIGINAL PARTS
TATU

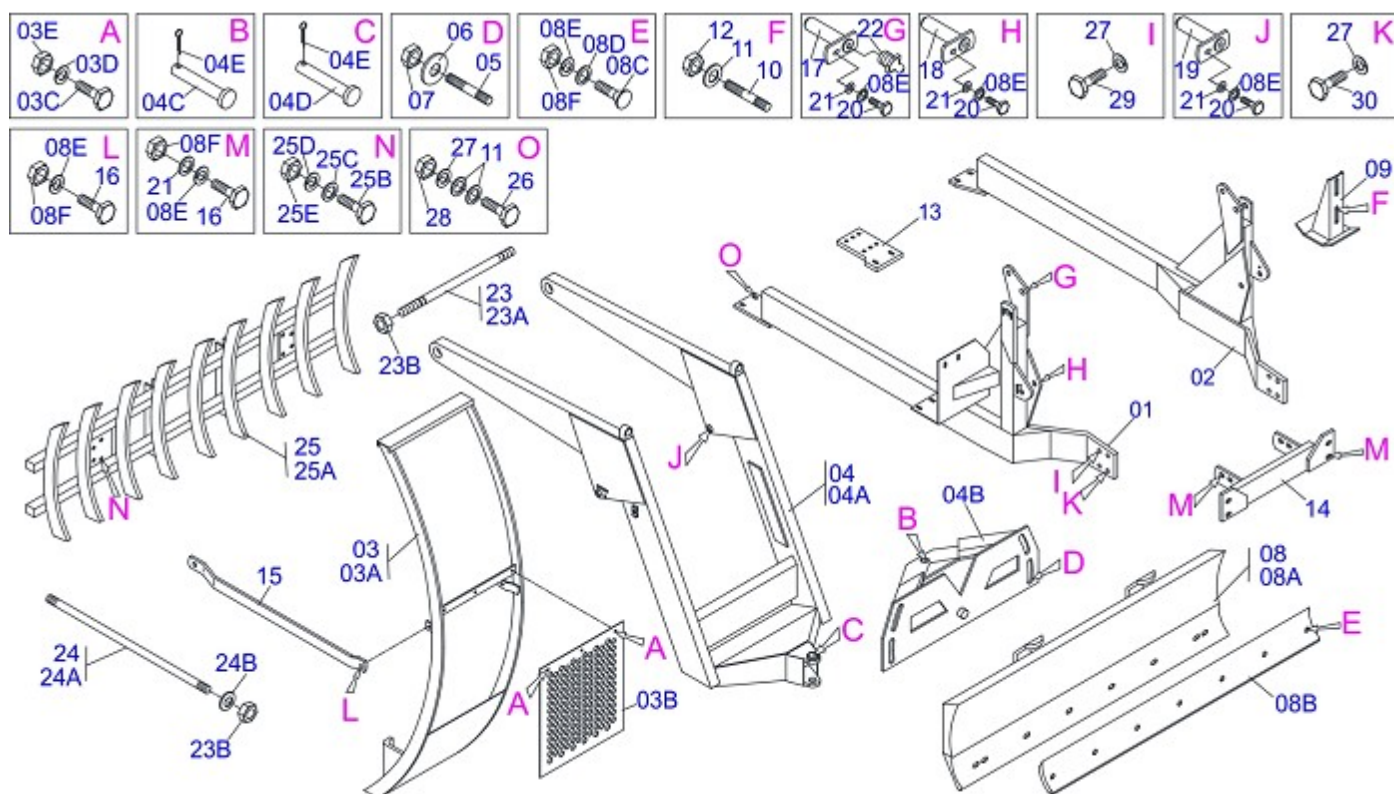


INDEX

0909092268	FRONT LOADER 292-4 ADV S-0902	1
0909092269	HYDRAULIC CIRCUIT	2
0909090269	HYDRAULIC CYLINDER	3

ATTENTION: IMPORTANT

MARCHESAN RESERVES THE RIGHT AT ANY TIME TO MAKE IMPROVEMENTS IN THE DESIGN, MATERIAL OR SPECIFICATIONS OF MACHINERY, EQUIPMENT OR PARTS WITHOUT THEREBY BECOMING LIABLE TO MAKE SIMILAR CHANGES IN MACHINERY, EQUIPMENT OR PARTS PREVIOUSLY SOLD.



Item	Code	Description	QT
01	0501067799	RIGHT FRAME	01
02	0501066326	LEFT REAR FRAME	01
03	0501047978		01
03A	0501069169		01
03B	0501014214		01
03C	0503010751	3/8" X 1.1/4" HEX BOLT G.5	03
03D	0501010984	FLAT WASHER	03
03E	0503010026	3/8" NUT	03
04	0501042513		01
04A	0501063701		01
04B	0501062637	5/8" REGULATOR SUPPORT	01
04C	0521010618	1.4" X 8.6" COUPLING SHAFT	01
04D	0521010312	RIGHT BEATER	01
04E	0503010010	1/4" X 2.1/2" COTTERPIN	02
05	0501010572	1 UNC X 1 UNS X 76 PRISONER	04
06	0501010574	FLAT WASHER	04
07	0503010340	1" UNF NUT	04
08	0501047708	2400 BLADE SUPPORT	01
08A	0501067999	2390 BLADE SUPPORT	01
08B	0622360016	94.5" SCRAPER REVERSIBLE	01
08C	0501012240	5/8" X 2-1/2" BOLT	07
08D	0501010301	FLAT WASHER	07
08E	0503010027	5/8" SPRING WASHER	23
08F	0503010013	5/8" NUT	17
09	0501063411	ESTABILIZER BRACKET	02
10	0501010571	3/4 NC X 3/4 NF X 56 PRISONER	04
11	0501010322	FLAT WASHER	12
12	0503010335	3/4" NUT	04
13	0501014778	FRAME BRACKET	02
14	0501064510		01
15	0501067701		02
16	0501010100	5/8" X 2" BOLT	10
17	0501063958	1.5" X 4.3" PIVOT SHAFT LOCK	02

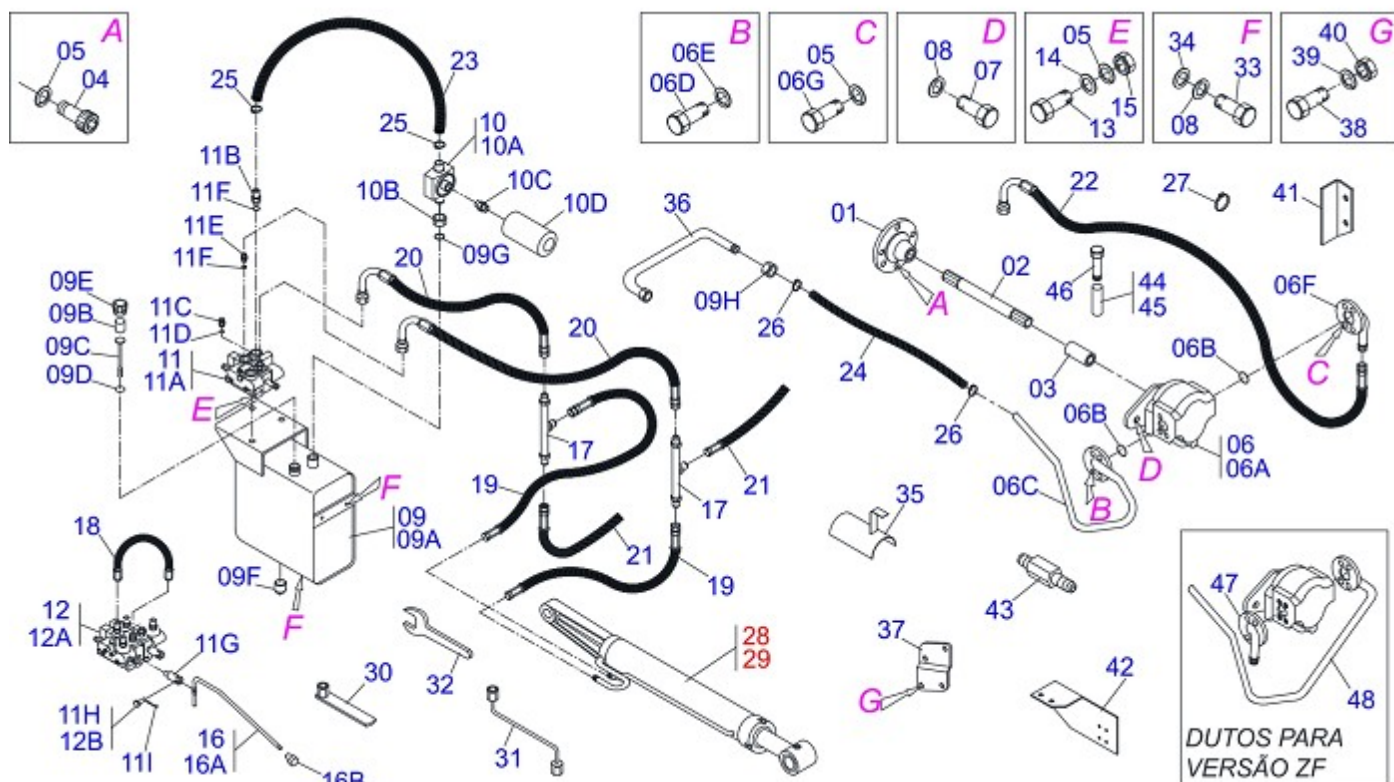


FRONT LOADER 292-4 ADV S-0902

0909092268

Item	Code	Description	QT
18	0501063959	PIVOT SHAFT	02
19	0501063751	1.5" X 5.5" PIVOT SHAFT	02
20	0503010962	5/8" X 1-1/4" BOLT	06
21	0501012140	FLAT WASHER	14
22	0503010002	GREASE FITTING	02
23	0501041652	1.1/4" X 31.88" ROD ASSY	01
23A	0501014916	1.1/4" X 31.88" ROD	01
23B	0501010087	1.1/4" UNC NUT	12
24	0501041856	1.1/4" NC X 1430 ROD	02
24A	0501014855	1.1/4" X 1430 ROD	01
24B	0502012180	CONICAL SPRING WASHER	02
25	0108010002	9 TEETH ROOTH RAKER	02
25A	0501060958	9 TEETH ROOTH RAKER	01
25B	0501010276	1" X 3" BOLT	04
25C	0501010623	FLAT WASHER	04
25D	0503010012	1" SPRING WASHER	04
25E	0501010059	1" NUT HEX	04
26	0501010500	3/4" X 3" BOLT	06
27	0503010023	3/4" SPRING WASHER	12
28	0503010014	3/4" NUT	04
29	0501010098	3/4" X 2" BOLT	06
30	0503010901	3/4" X 3-1/2" BOLT	02

HYDRAULIC CIRCUIT



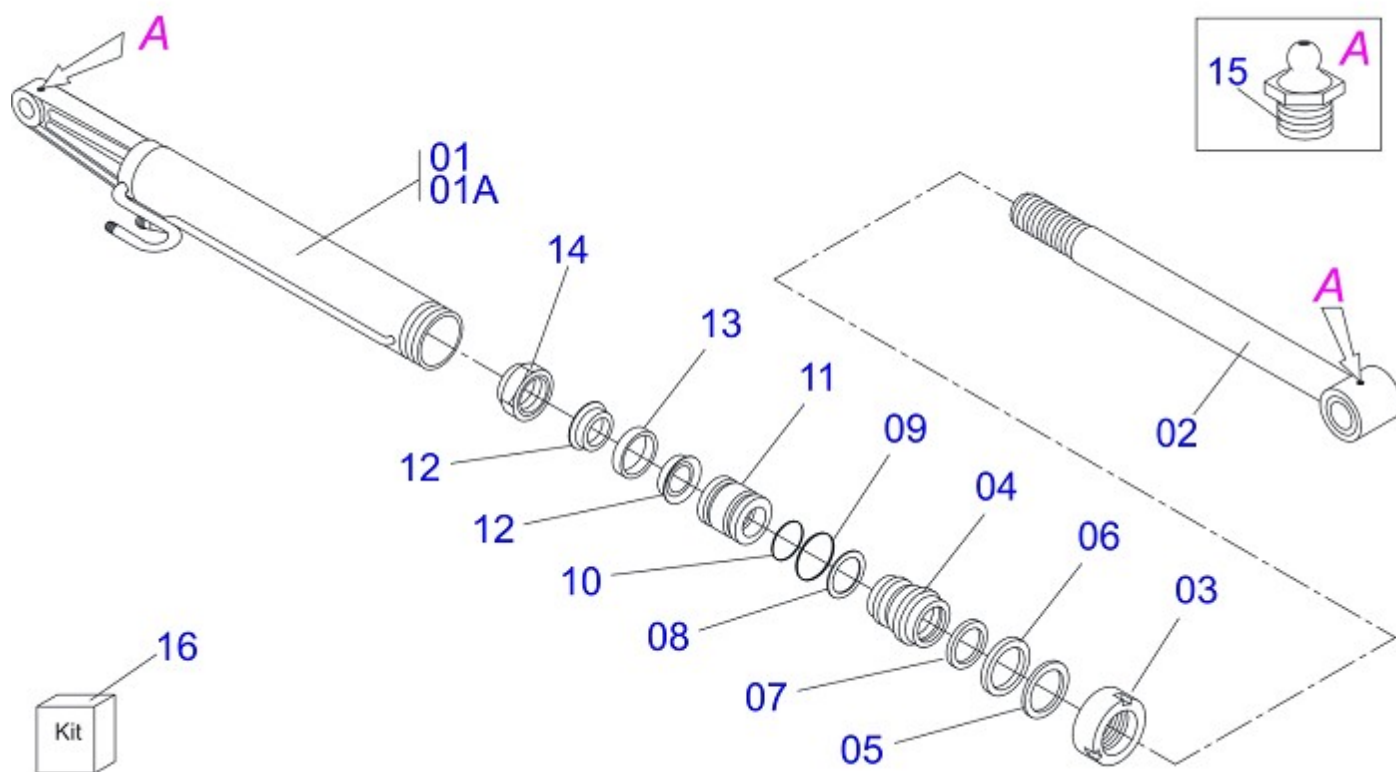
Item	Code	Description	CS	CD
01	0503050003	COUPLING FLANGE	01	01
02	0501067773	1-1/8" X 18.62" AXLE	01	01
03	0503030838	1-1/8" X 2.4" SLEEVE	01	01
04	0503010175	3/8" X 1-1/4" BOLT	06	06
05	0503010025	3/8" SPRING WHASHER	13	13
06	0501046947	PUMP WITH TUBE	01	01
06A	0503060045	40L 1/2" PUMP	01	01
06B	0503010173	2-220 N 3006-9B O-RING	02	02
06C	0501066791	PUMP SUCTION TUBE	01	01
06D	0503010355	7/16" X 1" BOLT	04	04
06E	0503010180	7/16" SPRING WASHER	04	04
06F	0501067702	PUMP PRESSURE TUBE	01	01
06G	0503010237	3/8" X 1" HEX BOLT G5	04	04
07	0503010920	1/2" X 1.1/2" BOLT	02	02
08	0503010019	1/2" SPRING WASHER	06	06
09	0501047808	RESERVOIR OIL ASSY	01	01
09A	0501068882	RESERVOIR OIL	01	01
09B	0503030044	FILTERING ELEMENT	01	01
09C	0501060975	OIL GAGE	01	01
09D	0503010185	2-221 N 3006-9B O-RING	01	01
09E	0502020472	TANK COVER BODY	01	01
09F	0503031604	1/2" BSP PLUG	01	01
09G	0503010046	2-216 N 3006-9B O-RING	01	01
09H	0501016309	2" 1X 2.5/16" NUT	01	01
10	0501041108	RETURNING FILTER ASSY	01	01
10A	0502050002	RETURNING FILTER HEAD	01	01
10B	0501010594	1" NUT HEX	01	01
10C	0501010595	1" NF NIPPLE	01	01
10D	0503010183	RETURNING FILTER	01	01
11	0501040871	1/2" COMMAND SIMPLE ASSY	01	
11A	0503060080	1/2" COMMAND SIMPLE	01	
11B	0501010591	HOSE NIPPLE	01	01
11C	0501010589	1-1/16 NIPPLE	01	01



HYDRAULIC CIRCUIT

0909092269

Item	Code	Description	CS CD
11D	0503010602	2-211 N 3006-9B O'RING	02 02
11E	0501010590	7/8" REDUCTION NIPPLE	02 04
11F	0503010045	2-116 N 3006-9B O'RING	02 04
11G	0503030347	UPPER LEVER ASSY (SAUER DANFOSS)	01 02
11H	0501010593	0.3" X 1" X 1/2" X 1.1 PIN	01
11I	0503010140	1/8" X 3/4" COTTERPIN	01 02
12	0501040873	1/2" DOUBLE COMMAND	01
12A	0503060081	1/2" DOUBLE COMMAND	01
12B	0521010532	0.3" X 0.9" COUPLING SHAFT	02
13	0501010080	3/8" X 1-1/2" BOLT	03 03
14	0501010984	FLAT WASHER	03 03
15	0503010026	3/8" NUT	03 03
16	0501041196	CONTROL LEVER ASSY	02 03
16A	0501067556	CONTROL VALVE (V-985-4)	01 01
16B	0503030878	LEVER CRANK	01 01
17	0501068945	CURVED CONNECTION	02 02
18	0501080120	1/2" X 400 TR-TR HOSE	01
19	0501080014		02 02
20	0501080119		02 02
21	0501080174		02 02
22	0501080637	3/4" X 2800 TR-TC HOSE	01 01
23	0501013822	1" X 25.6" AB-AB HOSE	01 01
24	0501010808	1.1/4" X 1300 AB-AB HOSE	01 01
25	0503010184	1-1/4" TO 1-1/2" CLAMP	02 02
26	0503010243	1-1/2" TO 2" CLAMP	02 02
27	0503010246	2" TO 2/1/2" CLAMP	02 02
28	0501046992	HYDRAULIC CYLINDER	01 01
29	0501046993	HYDRAULIC CYLINDER	01 01
30	0501068213	5/8" WRENCH DOUBLE	01 01
31	0511010153	2-5/16" FIXED WRENCH	01 01
32	0501061617	1" WRENCH CYLINDRICAL HEX	01 01
33	0501010161	1/2" X 1-1/4" BOLT	04 04
34	0511017302	FLAT WASHER	04 04
35	0511064563	HOSE PROTECTION	01 01
36	0501063383	TANK OUTER TUBE	01 01
37	0511017074		01 01
38	0503010294	1/4" X 7/8" BOLT	02 02
39	0503010143	1/4" SPRING WASHER	02 02
40	0503010144	1/4" NUT	02 02
41	0501018735	REDLIGHT SUPPORT	02 02
42	0521017643	FILTER SUPPORT	01 01
43	0521014428	EXTENSION HEX	02 02
44	0541015550	0.5" X 0.63" X 1.9" SLEEVE	02 02
45	0541015551	0.39" X 0.512" X 1.9" SLEEVE	02 02
46	0503010765	3/8" X 3" BOLT	02 02
47	0501069536	PUMP SUCTION TUBE	01 01
48	0501069661	PUMP PRESSURE TUBE	01 01
49	0503011332	5/16" X 2-3/4" BOLT	02 02



Item	Code	Description	
00	0501040161	RIGHT HYDRAULIC CYLINDER	
00A	0501040162	LEFT HYDRAULIC CYLINDER	
01	0501063658	RH 101,6 X 472 CYLINDER CASE	01
01A	0501063659	LH 101,6 X 472 CYLINDER CASE	01
02	0501068966	HYDRAULIC CYLINDER TURNBUCKLE	01
03	0502010017	4" HEAD	01
04	0502010778	2" X 4.2" RING SUPPORT	01
05	0503010039	D-2000 SCRAPER RING	01
06	0503010991	PACKING 1870-2000-375-B	01
07	0503010952	W2-2250-500 PK RING G.E	01
08	0503011061	8-342 BACK-UP RING	01
09	0503010338	2-342 N 3006-9B O'RING	01
10	0503010345	2-218 N 3006-9B O'RING	01
11	0502010992	2.0" X 4.0" PISTON	01
12	0503010043	PACKING 3750-3250	02
13	0503010994	W2-4000-500 PK RING G.E	01
14	0503010817	1.1/4" UNF SELF ADJUSTING NUT	01
15	0503010002	GREASE FITTING	02
16	0501031799	HYDRAULIC CYLINDER REPAIR KIT	01



MARCHESAN

MARCHESAN IMPLEMENTOS E MÁQUINAS AGRÍCOLAS TATU S.A.

AV. Marchesan, 1979 - Post office box, 131 - CEP 15994-900 - Matão - SP - Brazil

Phone +55 16.3382-8282

(FAX Parts) + 55 16.3382. 8297 - (Export) + 55 16.3382.1003

e.mail: tatu@marchesan.com.br www.marchesan.com.br

*Drafting and Illustration = GASPARI
e.mail = jgaspari@marchesan.com.br*

**ORIGINAL PARTS
TATU**



MARCHESAN