

PARTS CATALOG

FRONT LOADER

PD MF 292 S-0790

Code: 0501091391



Series: S-0790

Review: JULHO/90

ORIGINAL PARTS
TATU

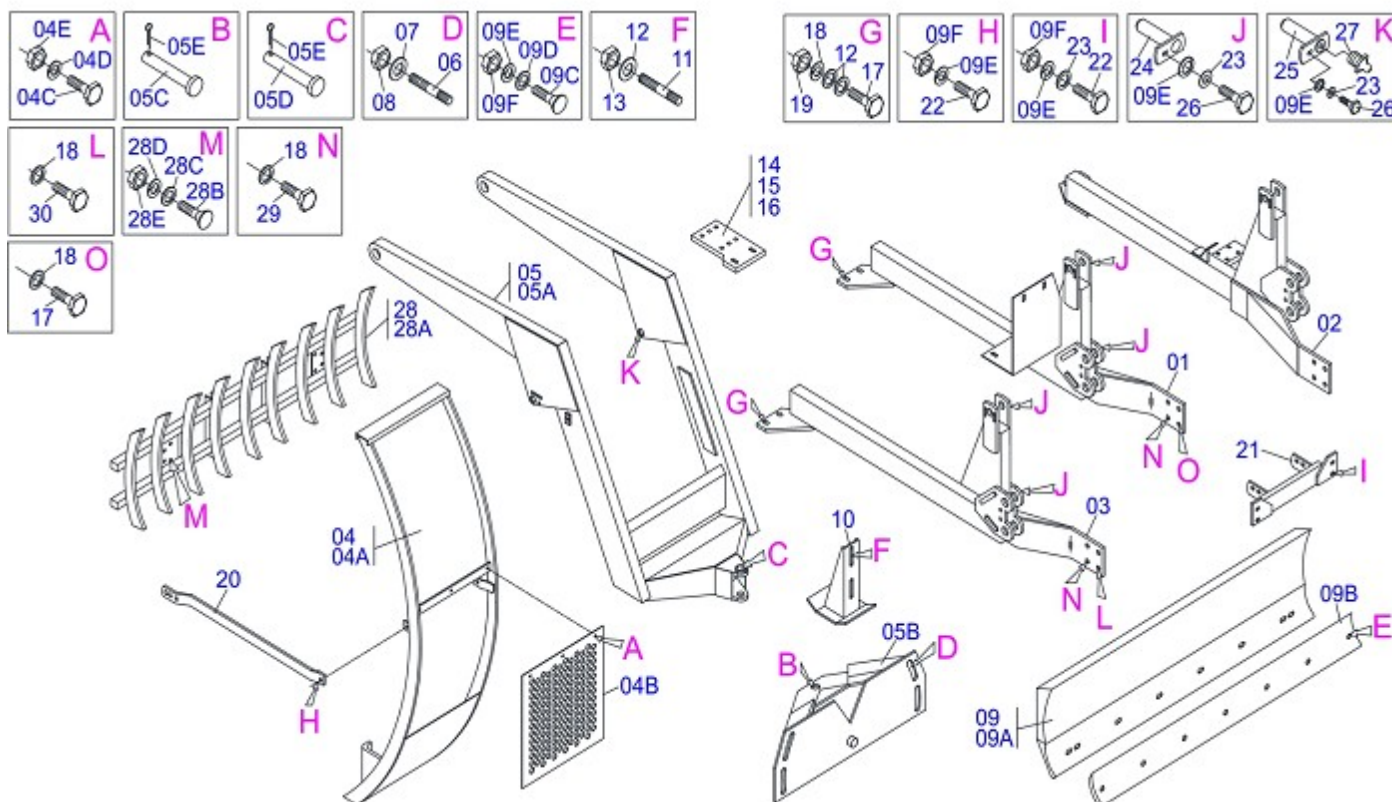


INDEX

0909091036	FRONT LOADER MF 292 S-0790	1
0909091063	HYDRAULIC CIRCUIT MF 292	2
0909092255	HYDRAULIC CIRCUIT MF 292	3
0909091234	HYDRAULIC CIRCUIT	4
0909090313	HYDRAULIC CYLINDER	5

ATTENTION: IMPORTANT

MARCHESAN RESERVES THE RIGHT AT ANY TIME TO MAKE IMPROVEMENTS IN THE DESIGN, MATERIAL OR SPECIFICATIONS OF MACHINERY, EQUIPMENT OR PARTS WITHOUT THEREBY BECOMING LIABLE TO MAKE SIMILAR CHANGES IN MACHINERY, EQUIPMENT OR PARTS PREVIOUSLY SOLD.



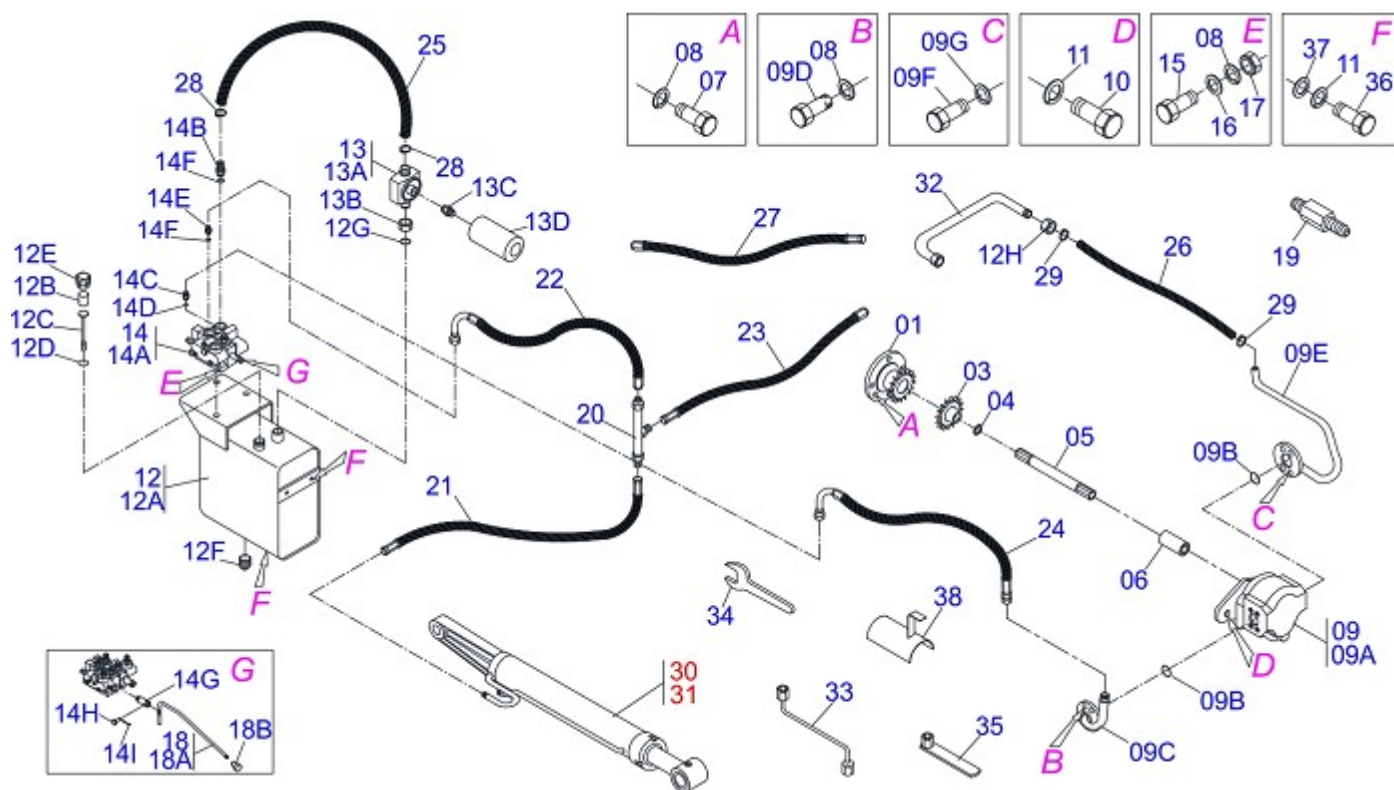
Item	Code	Description	SHT BT
01	0501064634	RIGHT FRAME	01
02	0501064635	LEFT FRAME	01 01
03	0501066481	RIGHT FRAME	01
04	0501040970	MOBILE SUPPORT GUIDE ASSY	01 01
04A	0501063161	MOBILE SUPPORT GUIDE ASSY	01 01
04B	0501014213	FRONT PROTECTION	01 01
04C	0503010751	3/8" X 1.1/4" HEX BOLT G.5	03 03
04D	0501010984	FLAT WASHER	03 03
04E	0501011338	3/8" SQUARE NUT	03 03
05	0501042507	SUPPORT GUIDE ASSY	01 01
05A	0501063663	SQUARE SHAFT	01 01
05B	0501063368	REGULATOR SUPPORT	01 01
05C	0521010618	1.4" X 8.6" COUPLING SHAFT	01 01
05D	0521010612	1.4" X 3.5" COUPLING SHAFT	01 01
05E	0503010010	1/4" X 2.1/2" COTTERPIN	02 02
06	0501010572	1 UNC X 1 UNS X 76 PRISONER	04 04
07	0501010574	FLAT WASHER	04 04
08	0503010340	1" UNF NUT	01 01
09	0501047709	2400MM BLADE SUPPORT ASSY	01 01
09A	0501068000	2390MM BLADE SUPPORT	01 01
09B	0622360016	94.5" SCRAPER REVERSIBLE	01 01
09C	0501012240	5/8" X 2-1/2" BOLT	08 08
09D	0501010301	FLAT WASHER	08 08
09E	0503010027	5/8" SPRING WASHER	24 24
09F	0503010013	5/8" NUT	18 18
10	0501063411	ESTABILIZER BRACKET	02 02
11	0501010571	3/4 NC X 3/4 NF X 56 PRISONER	04 04
12	0501010322	FLAT WASHER	12 12
13	0503010335	3/4" NUT	04 04
14	0501064689		01 01
15	0501064689		01 01
16	0501014778	FRAME BRACKET	02 02
17	0501010500	3/4" X 3" BOLT	06 06



FRONT LOADER MF 292 S-0790

0909091036

Item	Code	Description	SHT BT
18	0503010023	3/4" SPRING WASHER	12 12
19	0503010014	3/4" NUT	04 04
20	0501062748		02 02
21	0501062883		01 01
22	0501010100	5/8" X 2" BOLT	10 10
23	0501012140	FLAT WASHER	14 14
24	0501063958	1.5" X 4.3" PIVOT SHAFT LOCK	04 04
25	0501063960	37,2 X 130 PIVOT SHAFT LOCK	02 02
26	0503010962	5/8" X 1-1/4" BOLT	06 06
27	0503010002	GREASE FITTING	02 02
28	0108010002	9 TEETH ROOTH RAKER	02 02
28A	0501060958	9 TEETH ROOTH RAKER	01 01
28B	0501020276	BOX WITH COMPONENTS	04 04
28C	0501010623	FLAT WASHER	04 04
28D	0503010012	1" SPRING WASHER	04 04
28E	0501010059	1" NUT HEX	04 04
29	0501010098	3/4" X 2" BOLT	06 06
30	0501010125	3/4" X 2-1/2" BOLT	02



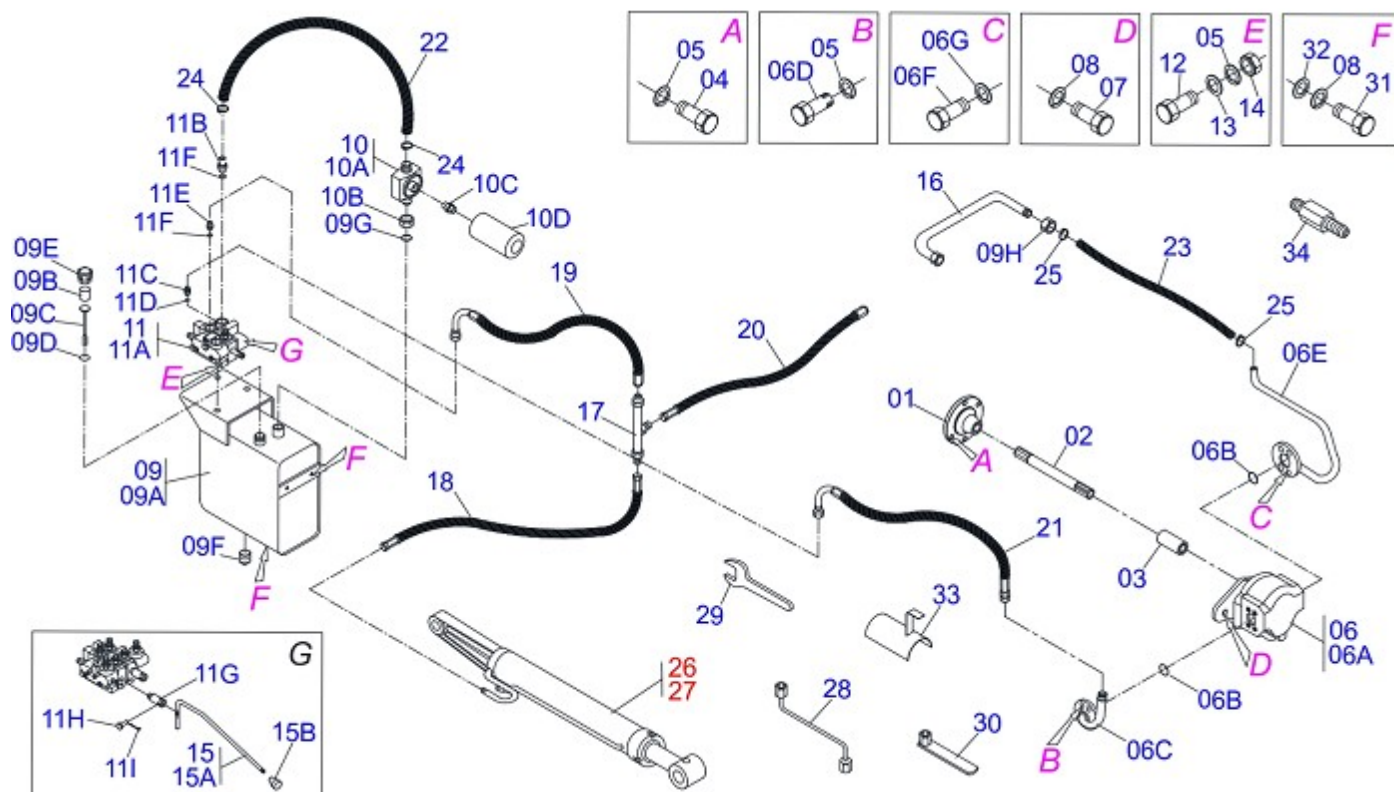
Item	Code	Description	QT
01	0503050029		01
02	0503010455	50-2 CHAIN X 15 LINK + MENDING	01
03	0503010075	00964-C SEAL	01
04	0501010890	FLANGE WASHER	01
05	0503030850	380 X 7/8UNC X STRIATED 1.1/8-30G AXLE	01
06	0503030838	1-1/8" X 2.4" SLEEVE	01
07	0503010175	3/8" X 1-1/4" BOLT	04
08	0503010025	3/8" SPRING WHASHER	11
09	0501047335	PUMP SHAFT	01
09A	0503060045	40L 1/2" PUMP	01
09B	0503010173	2-220 N 3006-9B O'RING	02
09C	0501067687	PUMP PRESSURE TUBE	01
09D	0503010237	3/8" X 1" HEX BOLT G5	04
09E	0501067688	PUMP SUCTION TUBE	01
09F	0503010355	7/16" X 1" BOLT	04
09G	0503010180	7/16" SPRING WASHER	04
10	0503010920	1/2" X 1.1/2" BOLT	02
11	0503010019	1/2" SPRING WASHER	06
12	0501047808	RESERVOIR OIL ASSY	01
12A	0501068882	RESERVOIR OIL	01
12B	0503030044	FILTERING ELEMENT	01
12C	0501060975	OIL GAGE	01
12D	0503010185	2-221 N 3006-9B O'RING	01
12E	0502020472	TANK COVER BODY	01
12F	0503031604	1/2" BSP PLUG	01
12G	0503010046	2-216 N 3006-9B O'RING	01
12H	0501016309	2" 1X 2.5/16" NUT	01
13	0501041108	RETURNING FILTER ASSY	01
13A	0502050002	RETURNING FILTER HEAD	01
13B	0501010594	1" NUT HEX	01
13C	0501010595	1" NF NIPPLE	01
13D	0503010183	RETURNING FILTER	01
14	0501040873	1/2" DOUBLE COMMAND	01



HYDRAULIC CIRCUIT MF 292

0909091063

Item	Code	Description	QT
14A	0503060081	1/2" DOUBLE COMMAND	01
14B	0501010591	HOSE NIPPLE	01
14C	0501010589	1-1/16 NIPPLE	01
14D	0503010602	2-211 N 3006-9B O'RING	02
14E	0501010590	7/8" REDUCTION NIPPLE	04
14F	0503010045	2-116 N 3006-9B O'RING	04
14G	0503030347	UPPER LEVER ASSY (SAUER DANFOSS)	02
14H	0521010532	0.3" X 0.9" COUPLING SHAFT	02
14I	0503010140	1/8" X 3/4" COTTERPIN	02
15	0501010080	3/8" X 1-1/2" BOLT	03
16	0501010984	FLAT WASHER	03
17	0503010026	3/8" NUT	03
18	0501041196	CONTROL LEVER ASSY	02
18A	0501067556	CONTROL VALVE (V-985-4)	01
18B	0503030878	LEVER CRANK	01
19	0521014428	EXTENSION HEX	02
20	0501068942	"T" CONNECTION NIPPLES	02
21	0501080014		02
22	0501080010		02
23	0501080135		02
24	0501080705	3/4" X 118" TR-TC HOSE	01
25	0501013822	1" X 25.6" AB-AB HOSE	01
26	0501011513	1.1/4" X 1100 AB-ABROSE	01
27	0501080120	1/2" X 400 TR-TR HOSE	01
28	0503010184	1-1/4" TO 1-1/2" CLAMP	02
29	0503010243	1-1/2" TO 2" CLAMP	02
30	0501044360	HYDRAULIC CYLINDER	01
31	0501044361	HIDRAULIC CYLINDER	01
32	0501063383	TANK OUTER TUBE	01
33	0501068213	5/8" WRENCH DOUBLE	01
34	0511010153	2-5/16" FIXED WRENCH	01
35	0501061617	1" WRENCH CYLINDRICAL HEX	01
36	0501010161	1/2" X 1-1/4" BOLT	04
37	0511017302	FLAT WASHER	04
38	0511064563	HOSE PROTECTION	01



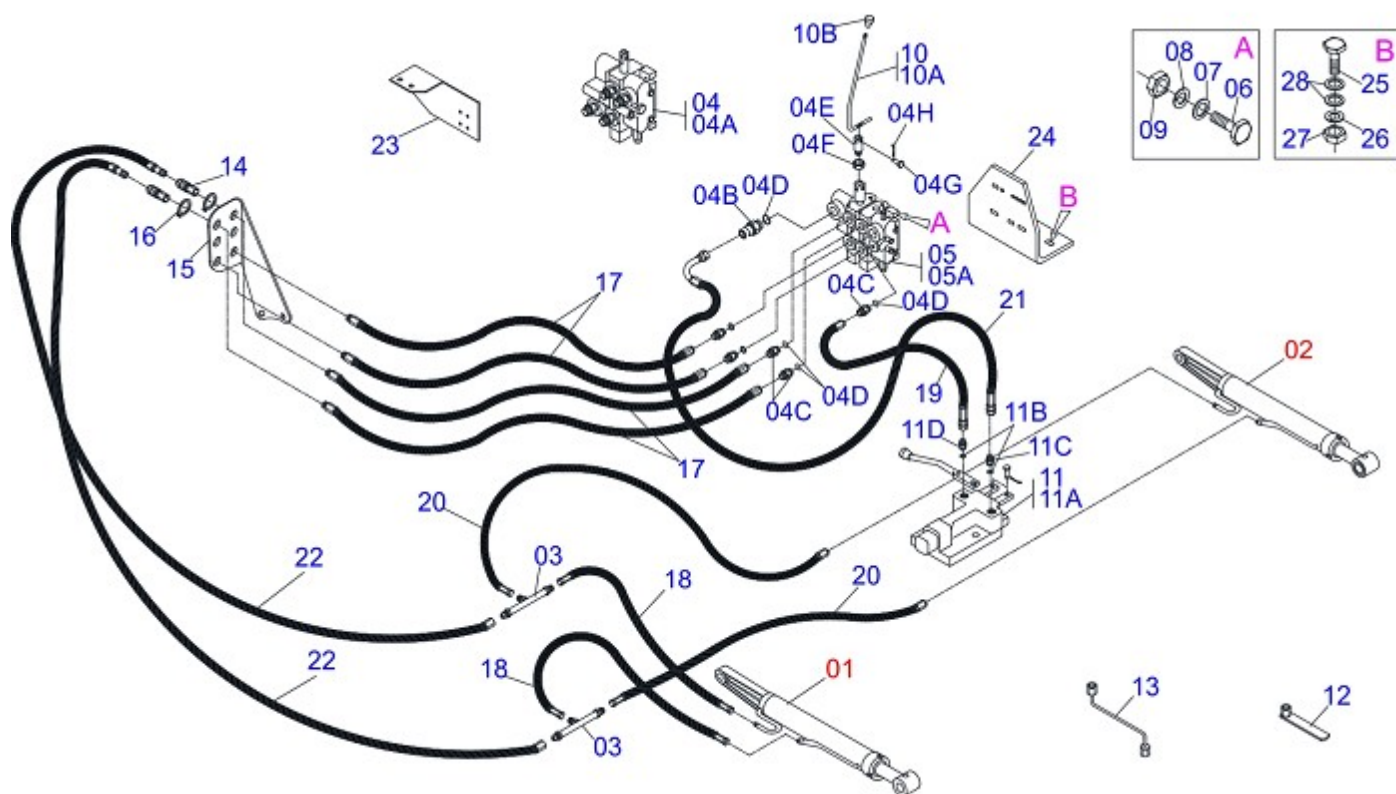
Item	Code	Description	QT
01	0503050003	COUPLING FLANGE	01
02	0501068936	475 X 1.1/8 STRIATED X 1.1/8-30G AXLE	01
03	0503030838	1-1/8" X 2.4" SLEEVE	01
04	0503010175	3/8" X 1-1/4" BOLT	04
05	0503010025	3/8" SPRING WHASHER	11
06	0501047335	PUMP SHAFT	01
06A	0503060045	40L 1/2" PUMP	01
06B	0503010173	2-220 N 3006-9B O'RING	02
06C	0501067687	PUMP PRESSURE TUBE	01
06D	0503010237	3/8" X 1" HEX BOLT G5	04
06E	0501067688	PUMP SUCTION TUBE	01
06F	0503010355	7/16" X 1" BOLT	04
06G	0503010180	7/16" SPRING WASHER	04
07	0503010920	1/2" X 1.1/2" BOLT	02
08	0503010019	1/2" SPRING WASHER	06
09	0501047808	RESERVOIR OIL ASSY	01
09A	0501068882	RESERVOIR OIL	01
09B	0503030044	FILTERING ELEMENT	01
09C	0501060975	OIL GAGE	01
09D	0503010185	2-221 N 3006-9B O'RING	01
09E	0502020472	TANK COVER BODY	01
09F	0503031604	1/2" BSP PLUG	01
09G	0503010046	2-216 N 3006-9B O'RING	01
09H	0501016309	2" 1X 2.5/16" NUT	01
10	0501041108	RETURNING FILTER ASSY	01
10A	0502050002	RETURNING FILTER HEAD	01
10B	0501010594	1" NUT HEX	01
10C	0501010595	1" NF NIPPLE	01
10D	0503010183	RETURNING FILTER	01
11	0501040871	1/2" COMMAND SIMPLE ASSY	01
11A	0503060080	1/2" COMMAND SIMPLE	01
11B	0501010591	HOSE NIPPLE	01
11C	0501010589	1-1/16 NIPPLE	01



HYDRAULIC CIRCUIT MF 292

0909092255

Item	Code	Description	QT
11D	0503010602	2-211 N 3006-9B O'RING	02
11E	0501010590	7/8" REDUCTION NIPPLE	02
11F	0503010045	2-116 N 3006-9B O'RING	02
11G	0503030347	UPPER LEVER ASSY (SAUER DANFOSS)	01
11H	0501010593	0.3" X 1" X 1/2" X 1.1 PIN	01
11I	0503010140	1/8" X 3/4" COTTERPIN	01
12	0501010080	3/8" X 1-1/2" BOLT	03
13	0501010984	FLAT WASHER	03
14	0503010026	3/8" NUT	03
15	0501041196	CONTROL LEVER ASSY	01
15A	0501067556	CONTROL VALVE (V-985-4)	01
15B	0503030878	LEVER CRANK	01
16	0501063383	TANK OUTER TUBE	01
17	0501068942	"T" CONNECTION NIPPLES	02
18	0501080014		02
19	0501080010		02
20	0501080135		02
21	0501080705	3/4" X 118" TR-TC HOSE	01
22	0501013822	1" X 25.6" AB-AB HOSE	01
23	0501011513	1.1/4" X 1100 AB-ABROSE	01
24	0503010184	1-1/4" TO 1-1/2" CLAMP	02
25	0503010243	1-1/2" TO 2" CLAMP	02
26	0501044360	HYDRAULIC CYLINDER	01
27	0501044361	HIDRAULIC CYLINDER	01
28	0501068213	5/8" WRENCH DOUBLE	01
29	0511010153	2-5/16" FIXED WRENCH	01
30	0501061617	1" WRENCH CYLINDRICAL HEX	01
31	0501010161	1/2" X 1-1/4" BOLT	04
32	0511017302	FLAT WASHER	04
33	0511064563	HOSE PROTECTION	01
34	0521014428	EXTENSION HEX	02



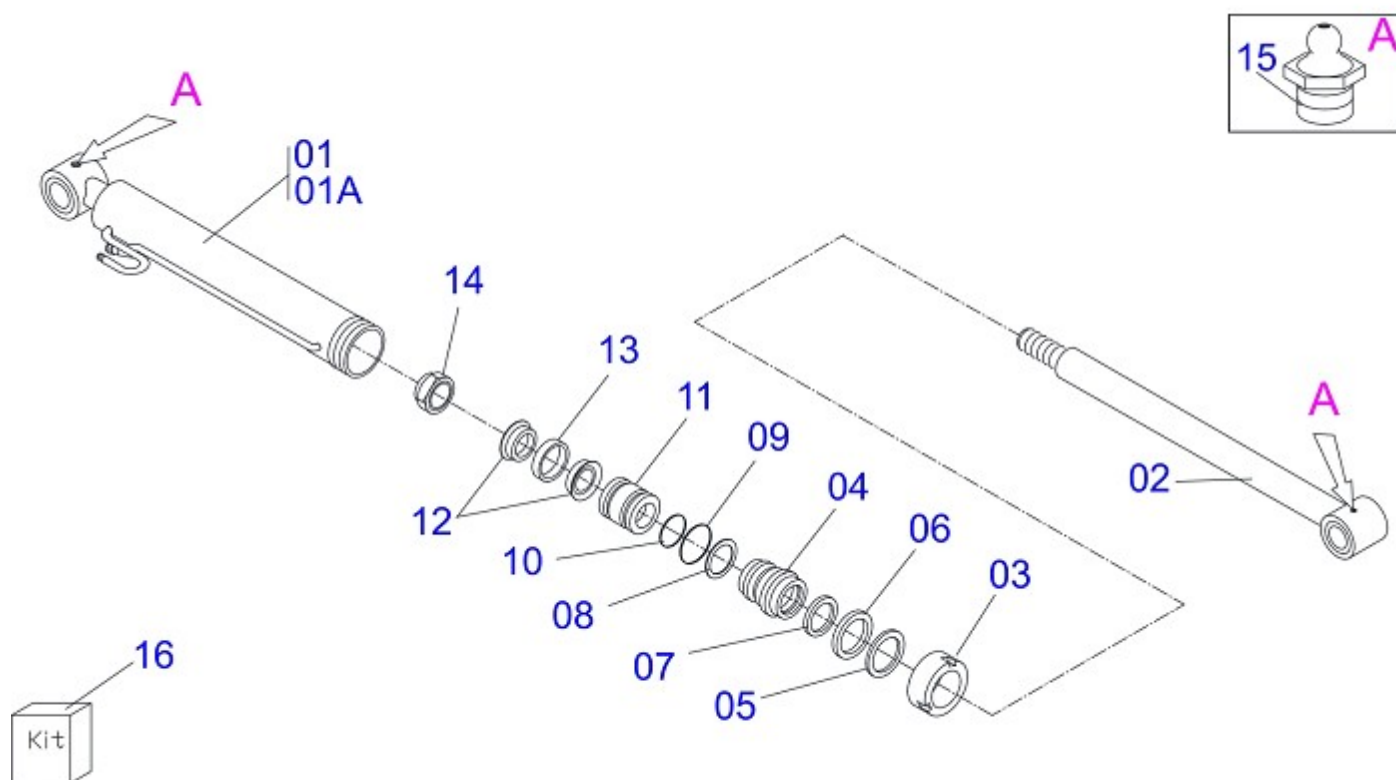
Item	Code	Description	CS CD
01	0501040951	HYDRAULIC CYLINDER	01 01
02	0501040952	HYDRAULIC CYLINDER	01 01
03	0501072676	OIL DISTRIBUTOR BODY	02 02
04	0501040976	3/8" CCOMMAND SIMPLE	01
04A	0503060078	3/8" COMMAND SIMPLE	01
04B	0501011806	1" HOSE NIPPLE	01 01
04C	0501010590	7/8" REDUCTION NIPPLE	03 05
04D	0503010045	2-116 N 3006-9B O'RING	04 06
04E	0503011050	LOWER LEVER	01 02
04F	0503010337	5/16" NUT	01 02
04G	0521010532	0.3" X 0.9" COUPLING SHAFT	01 02
04H	0503010140	1/8" X 3/4" COTTERPIN	01 02
05	0501041024	3/8" DOUBLE CONTROL VALVE	01
05A	0503060079	3/8" DOUBLE COMMAND VALVE	01
06	0501010080	3/8" X 1-1/2" BOLT	03 03
07	0501010984	FLAT WASHER	03 03
08	0503010025	3/8" SPRING WHASHER	03 03
09	0503010026	3/8" NUT	03 03
10	0501041473	CONTROL LEVER ASSY	01 02
11	0501041892	V002/0012 FLOW DIVIDING VALVE ASSY	01 01
11A	0503060064	V002-0012 FLOW DIVIDING VALVE	01 01
11B	0503010190	2-114 N 3006-9B O'RING	02 02
11C	0511010111	7/8" NIPPLE	01 01
11D	0501010617	3/4" NIPPLE	01 01
12	0501061617	1" WRENCH CYLINDRICAL HEX	01 01
13	0501068213	5/8" WRENCH DOUBLE	01 01
14	0503010186		02
15	0511019730	QUICK COUPLING SUPPORT	01
16	0503010217	501040 CLAMPING RING (FOR AXLE)	04
17	0501080027	3/8" X 1000 TR-TR HOSE ASSY	02 02
18	0501080055	3/8" X 1000 TR-TC HOSE	02 02
19	0501080047	3/8" X 67" TR-TR HOSE ASSY	01 01
20	0501080320		02 02



PD MF 292 S-0790
HYDRAULIC CIRCUIT

Page 4
0909091234

Item	Code	Description	CS CD
21	0501080061	1/2 X 1700 TR-TC HOSE ASSY	01 01
22	0501080600		02
23	0521017643	FILTER SUPPORT	01
24	0501014688	SUPPORT CONTROL VALVE	01 01
25	0503010421	5/16" X 1-1/2" BOLT	02 02
26	0503010179	5/16" SPRING WASHER	02 02
27	0503010136	DRIVE SHAFT	02 02
28	0501011517	FLAT WASHER	04 04



Item	Code	Description	QT
00	0501040951	HYDRAULIC CYLINDER	
00A	0501040952	HYDRAULIC CYLINDER	
01	0501063470	63,50 X 487 CYLINDER CASE	01
01A	0501063471	63,50 X 487 CYLINDER CASE	01
02	0501060929	38,10 TURNBUCLE	01
03	0502010471	DETACHABLE COVER	01
04	0502010780	RING SUPPORT	01
05	0503010163	D-1500 SCRAPER RING	01
06	0503010989	1870-1500-375-B GASKET	01
07	0503010970	W1-1650-500 PK RING G.E	01
08	0503011058	8-330 BACK-UP RING	01
09	0503010161	2-330 N 3006 9B O'RING	01
10	0503010285	2-222 N 3006-9B O'RING	01
11	0502010783	1.5" X 2.5" PISTON	01
12	0503010160	2500 2000 GASKET	02
13	0503010973	W2-2500-500 PK RING G.E	01
14	0503010063	1" SELF-ALIGNING NUT	01
15	0503010002	GREASE FITTING	02
16	0501032666	HYDRAULIC CYLINDER REPAIR KIT	



MARCHESAN

MARCHESAN IMPLEMENTOS E MÁQUINAS AGRÍCOLAS TATU S.A.

AV. Marchesan, 1979 - Post office box, 131 - CEP 15994-900 - Matão - SP - Brazil

Phone +55 16.3382-8282

(FAX Parts) + 55 16.3382. 8297 - (Export) + 55 16.3382.1003

e.mail: tatu@marchesan.com.br www.marchesan.com.br

Drafting and Illustration = GASPARI
e.mail = jgaspari@marchesan.com.br

**ORIGINAL PARTS
TATU**



MARCHESAN