

PARTS CATALOG

FRONT LOADER

PD MF 295-4 S-1188

Code: 0501091389



Series: S-1188

Review: NOVEMBRO/88

**ORIGINAL PARTS
TATU**

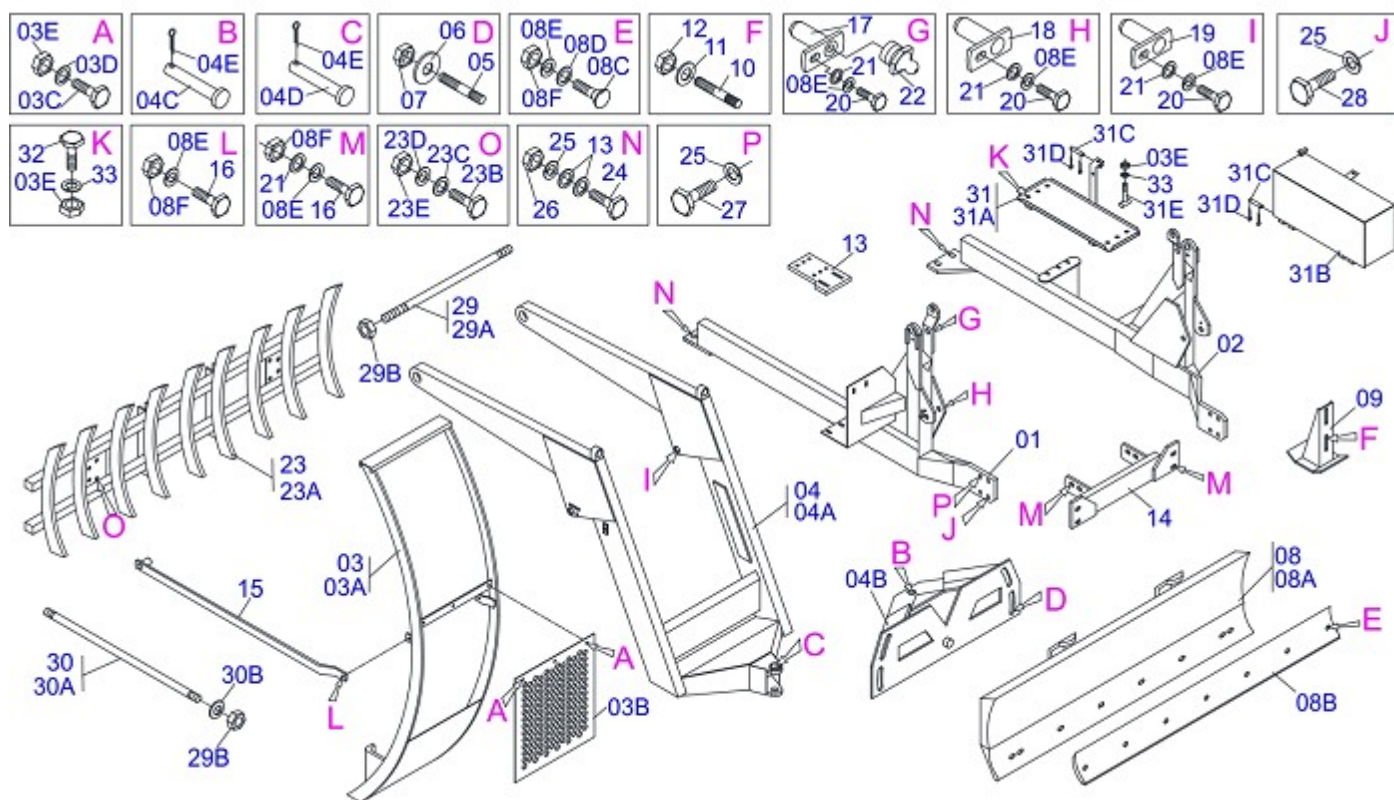


INDEX

0909091243	FRONT LOADER MF 295-4 S-1188	1
0909091244	HYDRAULIC CIRCUIT	2
0909091245	HYDRAULIC CYLINDER	3

ATTENTION: IMPORTANT

MARCHESAN RESERVES THE RIGHT AT ANY TIME TO MAKE IMPROVEMENTS IN THE DESIGN, MATERIAL OR SPECIFICATIONS OF MACHINERY, EQUIPMENT OR PARTS WITHOUT THEREBY BECOMING LIABLE TO MAKE SIMILAR CHANGES IN MACHINERY, EQUIPMENT OR PARTS PREVIOUSLY SOLD.



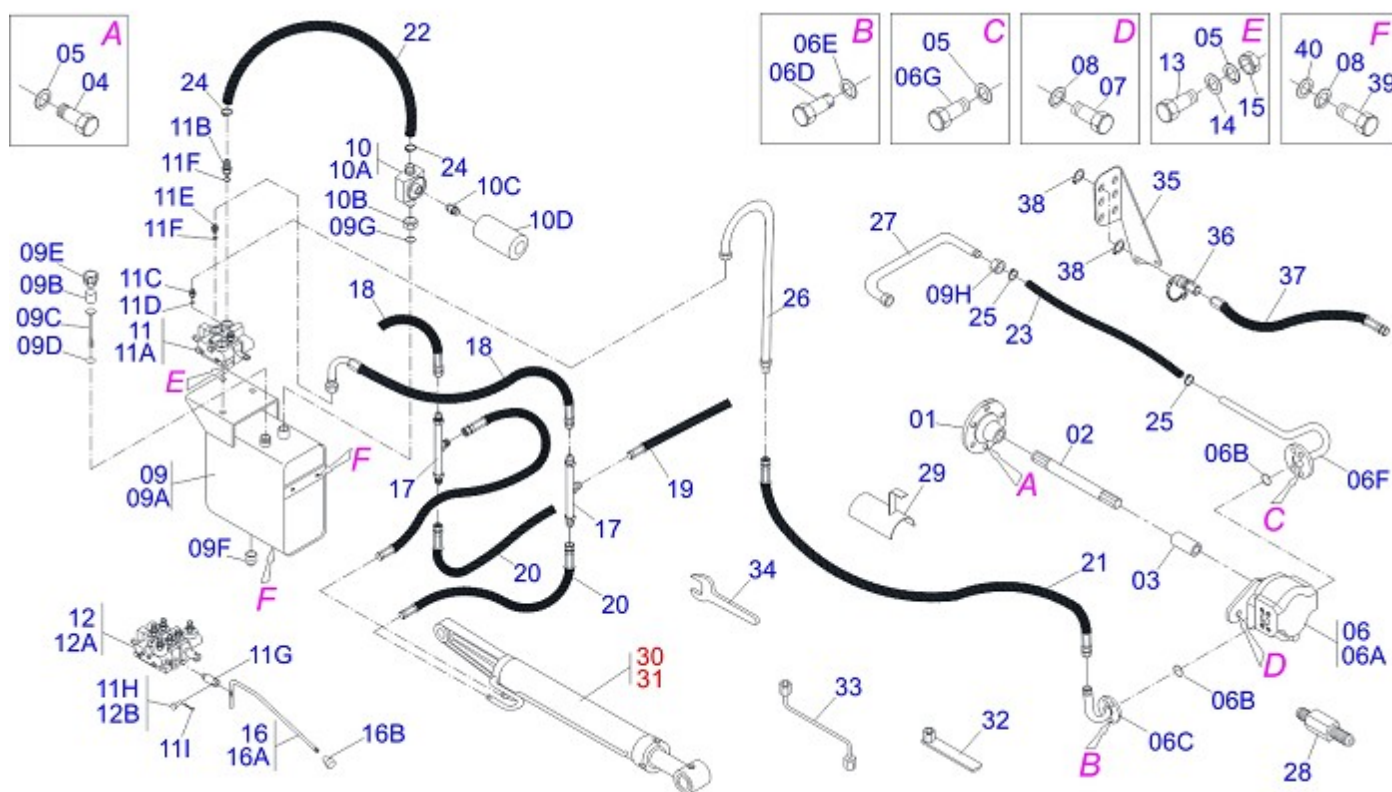
Item	Code	Description	QT
01	0501063889	RIGHT FRAME	01
02	0501063890	LEFT FRAME	01
03	0501047978		01
03A	0501069169		01
03B	0501014214		01
03C	0503010751	3/8" X 1.1/4" HEX BOLT G.5	03
03D	0501010984	FLAT WASHER	03
03E	0503010026	3/8" NUT	04
04	0501042513		01
04A	0501063701		01
04B	0501062637	5/8" REGULATOR SUPPORT	01
04C	0521010618	1.4" X 8.6" COUPLING SHAFT	01
04D	0521010612	1.4" X 3.5" COUPLING SHAFT	01
04E	0503010010	1/4" X 2.1/2" COTTERPIN	02
05	0501010572	1 UNC X 1 UNS X 76 PRISONER	04
06	0501010574	FLAT WASHER	04
07	0503010340	1" UNF NUT	04
08	0501047710	2600MM BLADE SUPPORT ASSY	01
08A	0501068001	2590MM BLADE SUPPORT ASSY	01
08B	0622360011	2600 SCRAPER REVERSIBLE	01
08C	0501012240	5/8" X 2-1/2" BOLT	07
08D	0501010301	FLAT WASHER	07
08E	0503010027	5/8" SPRING WASHER	23
08F	0503010013	5/8" NUT	17
09	0501063411	ESTABILIZER BRACKET	01
10	0501010571	3/4 NC X 3/4 NF X 56 PRISONER	04
11	0501010322	FLAT WASHER	12
12	0503010335	3/4" NUT	04
13	0501014778	FRAME BRACKET	02
14	0501062883		01
15	0501062748		02
16	0501010100	5/8" X 2" BOLT	10
17	0501063751	1.5" X 5.5" PIVOT SHAFT	02



FRONT LOADER MF 295-4 S-1188

0909091243

Item	Code	Description	QT
18	0501063444	PIVOT SHAFT	02
19	0501063446	PIVOT SHAFT	02
20	0503010962	5/8" X 1-1/4" BOLT	06
21	0501012140	FLAT WASHER	14
22	0503010002	GREASE FITTING	02
23	0108010002	9 TEETH Rooth RAKER	02
23A	0501060958	9 TEETH Rooth RAKER	01
23B	0501010276	1" X 3" BOLT	04
23C	0501010623	FLAT WASHER	04
23D	0503010012	1" SPRING WASHER	04
23E	0501010059	1" NUT HEX	04
24	0501010125	3/4" X 2-1/2" BOLT	04
25	0503010023	3/4" SPRING WASHER	12
26	0503010014	3/4" NUT	04
27	0501010098	3/4" X 2" BOLT	06
28	0503010797	3/4" X 4" BOLT	02
29	0501040954	1.1/4" NC X 760 ROD	01
29A	0501010628	1.1/4" X 760 ROD	01
29B	0501010087	1.1/4" UNC NUT	10
30	0501041856	1.1/4" NC X 1430 ROD	02
30A	0501014855	1.1/4" X 1430 ROD	01
30B	0502012180	CONICAL SPRING WASHER	02
31	0501041485	BATTERY BOX	01
31A	0501061298	SUPPORT UPPER BASE	01
31B	0501061299		01
31C	0501010828	PIVOT SHAFT	03
31D	0503010140	1/8" X 3/4" COTTERPIN	06
31E	0501061300	FIXER COVER	01
32	0501010080	3/8" X 1-1/2" BOLT	04
33	0503010025	3/8" SPRING WHASHER	05



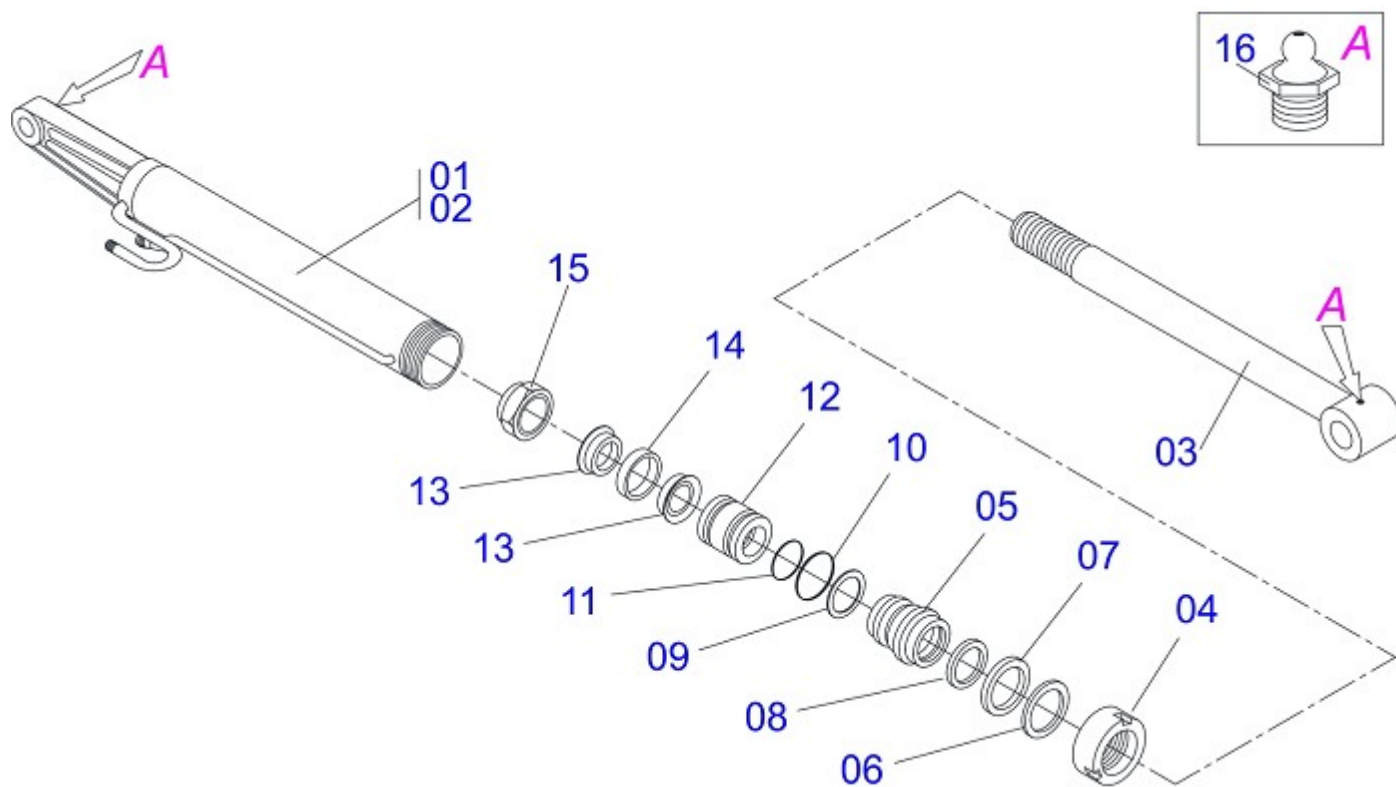
Item	Code	Description	CS	CD
01	0503050005		01	01
02	0501068907	340 X 7/8 STRIATED X 1.1/8 AXLE	01	01
03	0503030046		01	01
04	0503010207	3/8" X 1" BOLT	06	06
05	0503010025	3/8" SPRING WHASHER	13	13
06	0501041484	PUMP GEAR ASSY	01	01
06A	0503060045	40L 1/2" PUMP	01	01
06B	0503010173	2-220 N 3006-9B O-RING	02	02
06C	0501061313	PUMP SUCTION TUBE	01	01
06D	0501011179	7/16" X 1" BOLT	04	04
06E	0503010180	7/16" SPRING WASHER	04	04
06F	0501061315	PUMP PRESSURE TUBE	01	01
06G	0501010112	3/8" X 1" BOLT	04	04
07	0503010740	1/2" X 2" BOLT	02	02
08	0503010019	1/2" SPRING WASHER	06	06
09	0501047808	RESERVOIR OIL ASSY	01	01
09A	0501068882	RESERVOIR OIL	01	01
09B	0503030044	FILTERING ELEMENT	01	01
09C	0501060975	OIL GAGE	01	01
09D	0503010185	2-221 N 3006-9B O-RING	01	01
09E	0502020472	TANK COVER BODY	01	01
09F	0503031604	1/2" BSP PLUG	01	01
09G	0503010046	2-216 N 3006-9B O-RING	01	01
09H	0501016309	2" 1X 2.5/16" NUT	01	01
10	0501041108	RETURNING FILTER ASSY	01	01
10A	0502050002	RETURNING FILTER HEAD	01	01
10B	0501010594	1" NUT HEX	01	01
10C	0501010595	1" NF NIPPLE	01	01
10D	0503010183	RETURNING FILTER	01	01
11	0501040871	1/2" COMMAND SIMPLE ASSY	01	
11A	0503060080	1/2" COMMAND SIMPLE	01	
11B	0501010591	HOSE NIPPLE	01	01
11C	0501010589	1-1/16 NIPPLE	01	01



HYDRAULIC CIRCUIT

0909091244

Item	Code	Description	CS	CD
11D	0503010602	2-211 N 3006-9B O'RING	02	02
11E	0501010590	7/8" REDUCTION NIPPLE	02	04
11F	0503010045	2-116 N 3006-9B O'RING	02	04
11G	0503030347	UPPER LEVER ASSY (SAUER DANFOSS)	01	02
11H	0501010593	0.3" X 1" X 1/2" X 1.1 PIN	01	
11I	0503010140	1/8" X 3/4" COTTERPIN	01	02
12	0501040873	1/2" DOUBLE COMMAND	01	
12A	0503060081	1/2" DOUBLE COMMAND	01	
12B	0521010532	0.3" X 0.9" COUPLING SHAFT	02	
13	0501010080	3/8" X 1-1/2" BOLT	03	03
14	0501010984	FLAT WASHER	03	03
15	0503010026	3/8" NUT	03	03
16	0501041196	CONTROL LEVER ASSY	02	02
16A	0501067556	CONTROL VALVE (V-985-4)	01	01
16B	0503030878	LEVER CRANK	01	01
17	0501068942	"T" CONNECTION NIPPLES	01	01
18	0501080093	1/2 X 1300 HOSE TR-TC	02	02
19	0501080346	1/2" X 2000 TR-TR HOSE ASSY	02	02
20	0501080035	1/2" X 900 TR-TR HOSE	02	02
21	0501080247		01	01
22	0501013822	1" X 25.6" AB-AB HOSE	01	01
23	0501010835		01	01
24	0503010184	1-1/4" TO 1-1/2" CLAMP	02	02
25	0503010243	1-1/2" TO 2" CLAMP	02	02
26	0501063082	VALVE PRESSURE TUBE	01	01
27	0501063383	TANK OUTER TUBE	01	01
28	0521014428	EXTENSION HEX	02	02
29	0511064563	HOSE PROTECTION	01	01
30	0501044598	HYDRAULIC CYLINDER	01	01
31	0501044599	HYDRAULIC CYLINDER	01	01
32	0501061617	1" WRENCH CYLINDRICAL HEX	01	01
33	0501068213	5/8" WRENCH DOUBLE	01	01
34	0511010153	2-5/16" FIXED WRENCH	01	01
35	0511019730	QUICK COUPLING SUPPORT	01	
36	0503010186		02	
37	0501080075	1/2 X 2400 TR-TM HOSE ASSY	02	
38	0503010217	501040 CLAMPING RING (FOR AXLE)	04	
39	0501010161	1/2" X 1-1/4" BOLT	04	04
40	0511017302	FLAT WASHER	04	04



Item	Code	Description	QT
00	0501044598	HYDRAULIC CYLINDER	01
00A	0501044599	HYDRAULIC CYLINDER	01
01	0501063606	RH 85,7 X 483 CYLINDER CASE	01
02	0501063607	LH 85,7 X 483 CYLINDER CASE	01
03	0511062168	44,45 X 628 TURNBUCKLE	01
04	0502010993	DETACHABLE COVER	01
05	0502010781	RING SUPPORT	01
06	0503010761	D-1750 SCRAPER RING	01
07	0503010990	GASKET	01
08	0503010949	W2-2000-500 PK RING G.E	01
09	0503011060	8-336 BACK-UP RING	01
10	0503010976	2-336 N 3006-9B O'RING	01
11	0503010042	2-214 N 3006-9B O'RING	01
12	0502010843	1.8" X 3.4" PISTON	01
13	0503010170	PACKING 3120 2750	02
14	0503010948	W4-3346-590 PK RING G.E	01
15	0503010063	1" SELF-ALIGNING NUT	01
16	0503010002	GREASE FITTING	02



MARCHESAN

MARCHESAN IMPLEMENTOS E MÁQUINAS AGRÍCOLAS TATU S.A.

AV. Marchesan, 1979 - Post office box, 131 - CEP 15994-900 - Matão - SP - Brazil

Phone +55 16.3382-8282

(FAX Parts) + 55 16.3382. 8297 - (Export) + 55 16.3382.1003

e.mail: tatu@marchesan.com.br www.marchesan.com.br

*Drafting and Illustration = GASPARI
e.mail = jgaspari@marchesan.com.br*

**ORIGINAL PARTS
TATU**



MARCHESAN