

PARTS CATALOGUE



ROTARY CUTTERS

Code:

0501091375

Product:

ROAT2 1700



Series:

S-0507

Revision:

01

Date Revision:

FEVEREIRO/2005



PRODUCTS

Code	Description
0104090002	ROAT2 1700 S-0507
0104090002C	ROAT2 1700 EXP S-0507

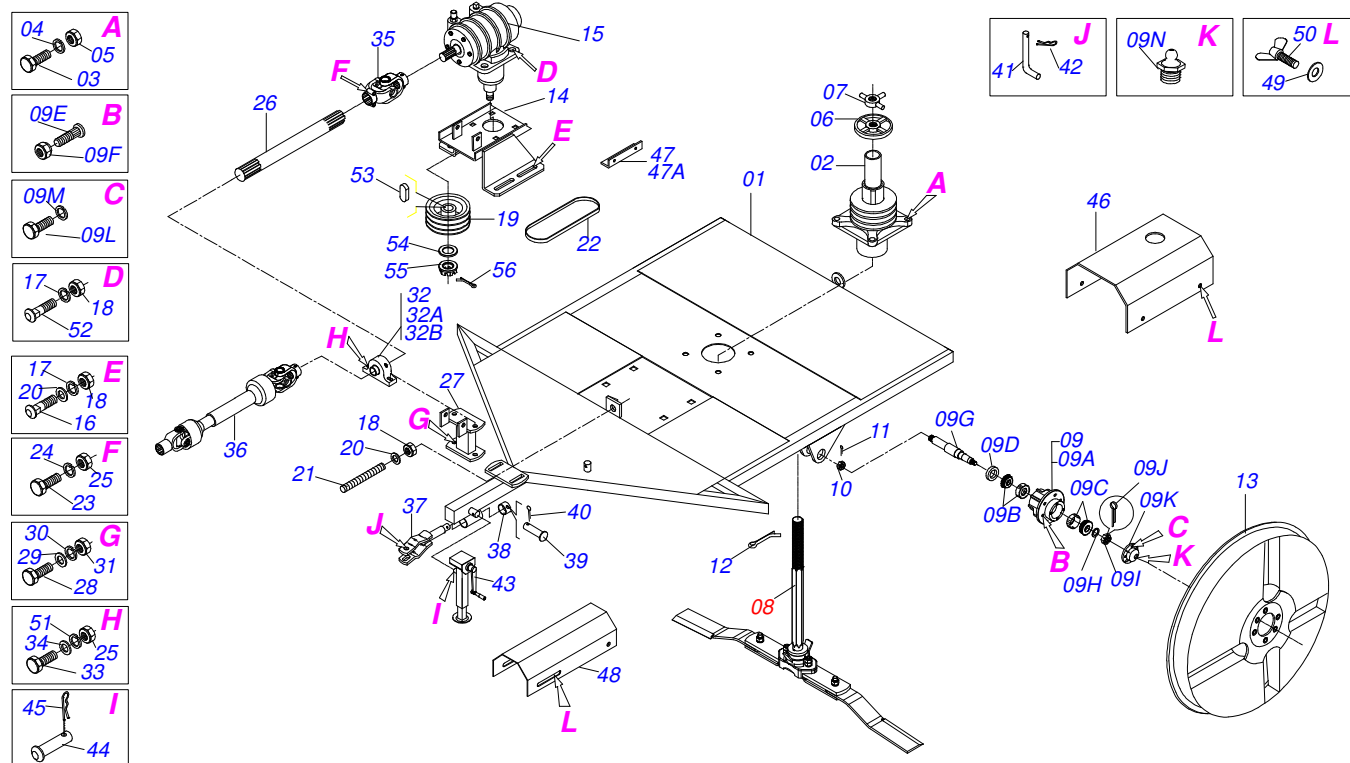
ATTENTION: IMPORTANT

Marchesan S.A. reserves the right to improve and / or modify the technical features of its products, without obligation to do the same with those products already sold and without prior knowledge of the dealer or the consumer.



INDEX

0909091412	FRAME ASSY	1
0501057738	CUTTERS SUPPORT	2
0909090262	MANDREL	3
0511041259	DRAWBAR JACK ASSY	4
0501046851	MULTIPLIER	5
0501044065	UNIVERSAL JOINT	6
0501047952	DRIVE SHAFT	7
0501043642	RUBBER WHEEL ASSY	8
0909091430	(SHEET METAL SUPPORT)SPARE	9

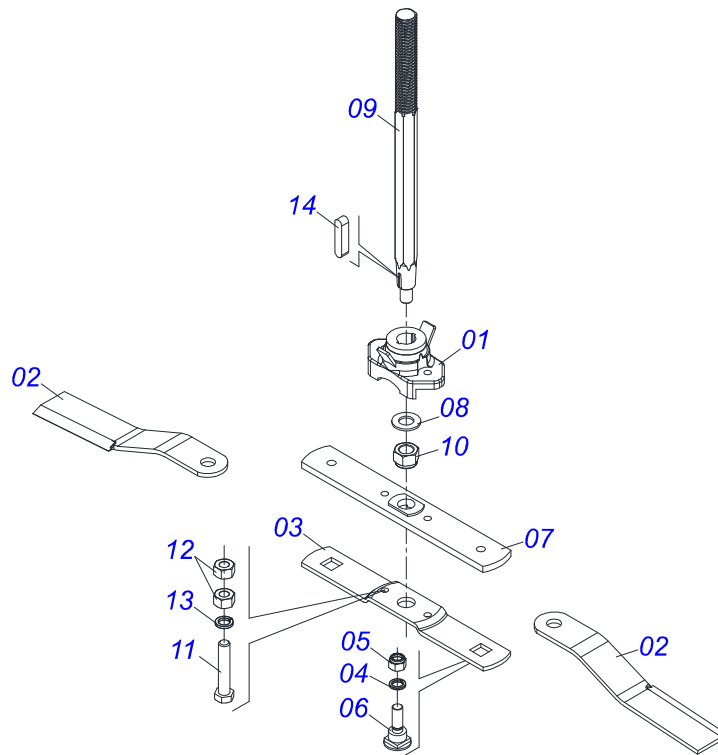


Item	Code	Description	See page	QT
01	0501068804	FRAME		01
02	0501042315	MANDREL		01
03	0501010276	BOLT		04
04	0503010012	1" SPRING WASHER		04
05	0501010059	1.5/8 NUT		04
06	0502010095	HANDLE		01
07	0502012010	HANDLE LOCK		01
08	0501057738	CUTTERS SUPPORT	2	01
09	0501051634	TSTUB SHAFT & HUB ASSY		02
09A	0502011121	CARRYING WHEEL HUB		02
09B	0503010006	32210 ROLLER BEARING		02
09C	0503010037	30207 ROLLER BEARING		02
09D	0503012928	SEAL		02
09E	0501010127	9/16" X 1-7/8" LUG BOLT		06
09F	0503010035	9/16" CONIC NUT		06
09G	0521010821	2.5" X 16.5" AXLE		02
09H	0501016545	FLAT WASHER		02
09I	0503030009	1" CASTLE NUT		02
09J	0503010018	5/32 X 1-1/2 COTTERPIN		02
09K	0502020591	PROTECCION COVER		02
09L	0503010178	5/16" X 7/8" BOLT		08
09M	0503010179	5/16" ZN SPRING WASHER		08
09N	0503010002	1800 GREASE FITTING		02
10	0501011301	1.1/2 UNC 6FPP 2.5/16 NUT		02
11	0503010010	1/4" X 2.1/2" COTTERPIN		02
12	0503010534	3/8 X 2-1/2 COTTERPIN		01
13	0511061898	WHEEL		02
14	0501068587	MULTIPLIER SUPPORT		01
15	0501046851	MULTIPLIER	5	01
16	0501017305	3/4" X 2-1/4" BOLT		04
17	0503010023	3/4" SPRING WASHER		04

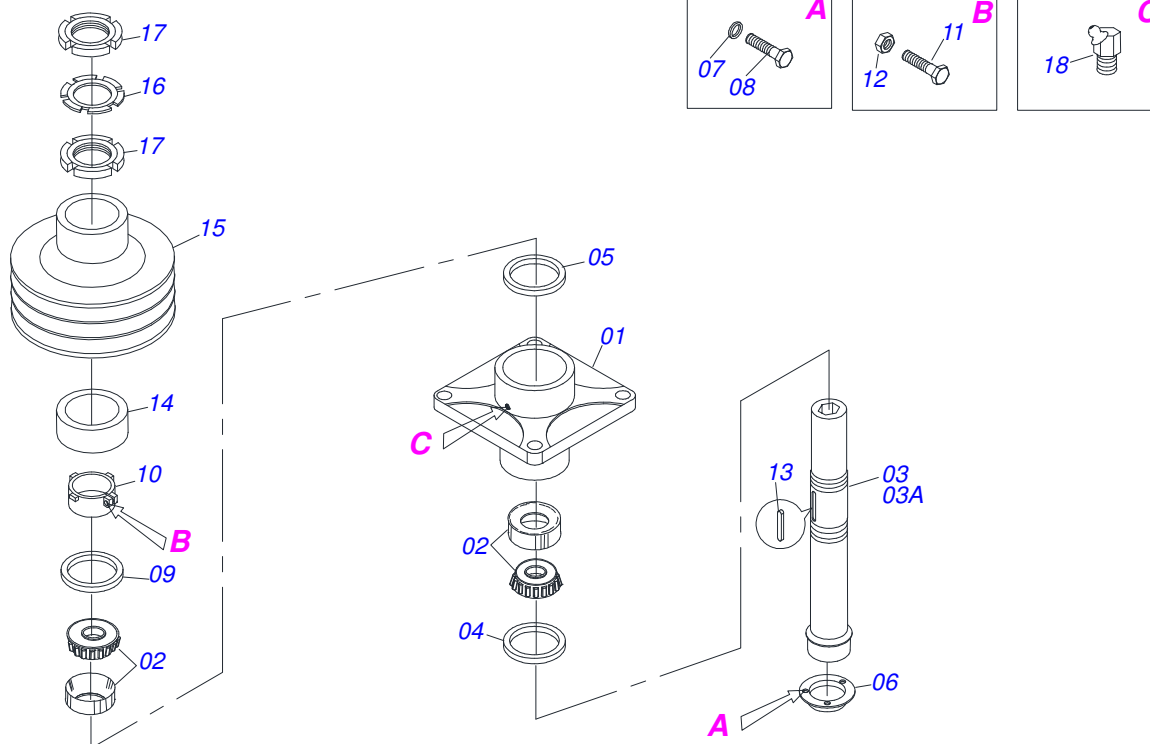


ROAT2 1700
FRAME ASSY

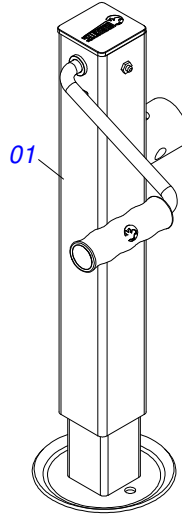
Item	Code	Description	See page	QT
18	0503010014	3/4" NUT		04
19	0502010909	REEL X 7.5" X 1.97" PULLEY		01
20	0501010322	FLAT WASHER		04
21	0501013451	282 TENSIONER BODY		01
22	0503010153	C-51 BELT		03
23	0503010479	BOLT		02
24	0503010019	1/2" SPRING WASHER		04
25	0503010060	1/2" NUT		04
26	0511011543	DRIVE AXLE		01
27	0501061174	BEARING SUPPORT		01
28	0503010233	5/8" X 2-1/2" BOLT		02
29	0501012140	FLAT WASHER		02
30	0503011445	SPRING WASHER		02
31	0503010013	5/8" NUT		02
32	0501044307	AGRICULTURAL BEARING ASSY		01
32A	0503010597	BALL BEARING		01
32B	0503010691	1/4" GREASE FITTING		01
33	0503010734	1/2" X 2-1/2" BOLT		02
34	0511017302	FLAT WASHER		04
35	0501044065	UNIVERSAL JOINT	6	01
36	0501047952	DRIVE SHAFT	7	01
37	0501069166	TRACTOR HITCH		01
38	0521010681	BUSHING COUPLING BODY		01
39	0521010639	COUPLING SHAFT		01
40	0503010571	1/4" X 1.1/2 COTTERPIN		01
41	0521010453	AXI SHAFT		01
42	0503031035	HAIR PIN		01
43	0511041259	DRAWBAR JACK ASSY	4	01
44	0521010549	COUPLING SHAFT		01
45	0503030168	HAIR PIN		01
46	0531017834	PROTECTION COVER OF THE BELT		01
47	0531017840	LEFT CORNER FOR FIX OF THE COVER		01
47A	0531017841	RIGHT CORNER FOR FIX OF THE COVER		01
48	0531017837	FRONT PROTECTION COVER		01
49	0501010984	FLAT WASHER		08
50	0503012904	3/8" BUTTERFLY BOLT		08
51	0503011440	SPRING WASHER		02
52	0501017305	3/4" X 2-1/4" BOLT		04
53	0501010536	KEYWAY SQUARE		02
54	0561015762	FLAT WASHER		01
55	0501011301	1.1/2 UNC 6FPP 2.5/16 NUT		01
56	0503010010	1/4" X 2.1/2" COTTERPIN		01



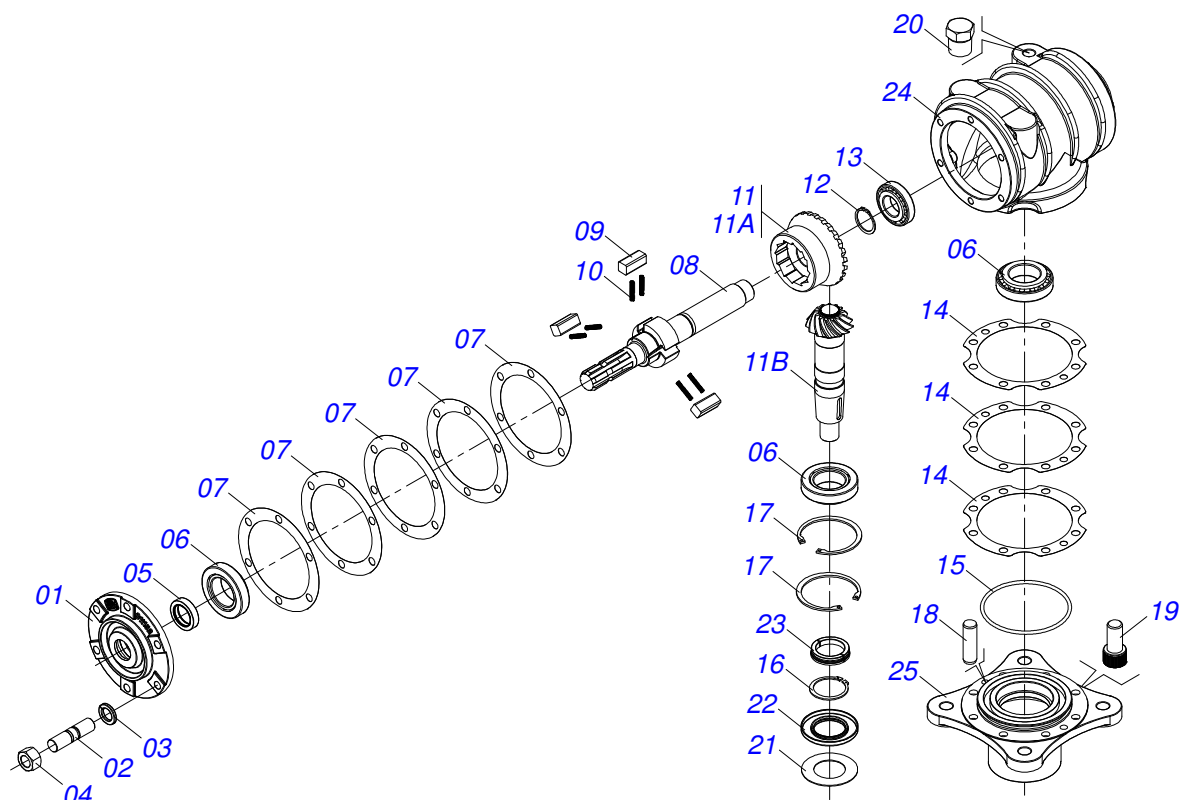
Item	Code	Description	See page	QT
01	0502012453	SUPPORT FLANGE		01
02	0622400054	24.5" X 3.94" X 0.5" ROTARY CUTTER		02
03	0561017369	ROTARY LOWER SUPPORT LOWER		01
04	0503011447	SPRING WASHER		02
05	0503010812	7/8" UNF SELF LOCKING NUT		02
06	0511019000	BOLT		02
07	0561017307	SUPPORT UPPER BASE		01
08	0501017779	32 X 60 X 4.75 FLAT WASHER		01
09	0551015952	SUPPORT FIXER AXLE		01
10	0503010817	1.1/4" SELF LOCKING NUT		01
11	0503011328	3/4" X 4" BOLT		02
12	0503010014	3/4" NUT		04
13	0503011442	3/4" SPRING WASHER		02
14	0501010536	KEYWAY SQUARE		02



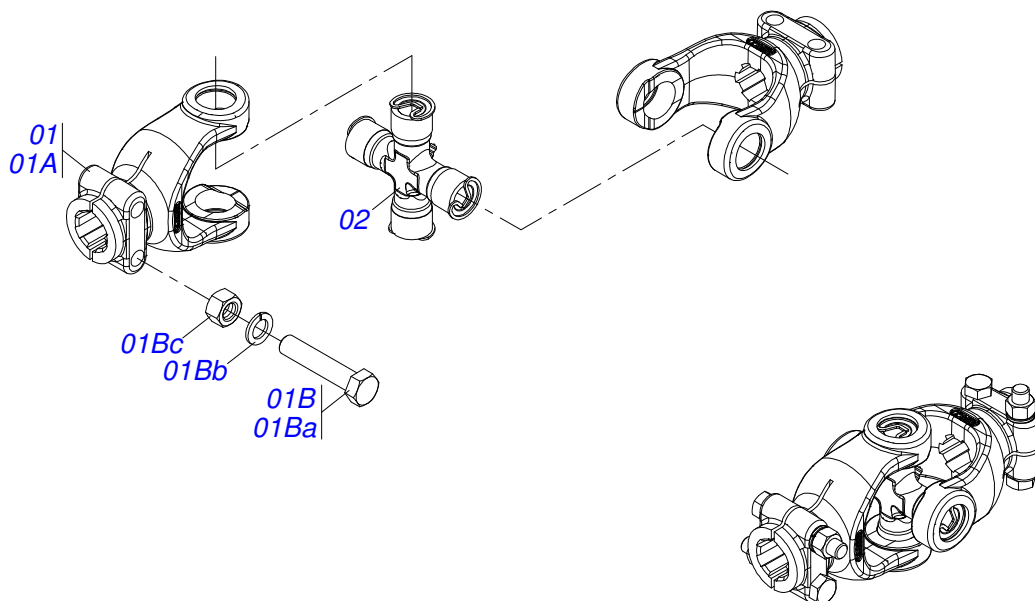
Item	Code	Description	See page	1700 3400
00	0501042315	MANDREL		01
00A	0501042913	MANDREL		01
01	0502010580	MANDREL BODY		01 01
02	0503010059	33287/33462 ROLLER BEARING		02 02
03	0502040420	AXLE ROAT		01
03A	0502040433	AXLE ROAT-D		01
04	0503010456	00002-B SEAL		01 01
05	0503010535	00116-B SEAL		01 01
06	0501011747	LABYRINTH SEAL		01 01
07	0503010179	5/16" ZN SPRING WASHER		03 03
08	0503010240	5/16" X 3/4" BOLT		03 03
09	0503010050	SEAL 00085-B		01 01
10	0502040724	ADJUSTMENT BUSHING		01 01
11	0503010751	C3/8" X 1.1/4" HEX BOLT G.5		01 01
12	0503010026	3/8" NUT		01 01
13	0501018488	3/8" X 3.1" KEYWAY SQUARE		02 02
14	0501018489	WASHER SPACER		01 01
15	0502011373	3 REEL X 8.26" PULLEY		01 01
16	0503010457	LOCK WASHER		01 01
17	0503010458	KM- 14 LOCKNUT		02 02
18	0503010003	1845 GREASE FITTING		01 01



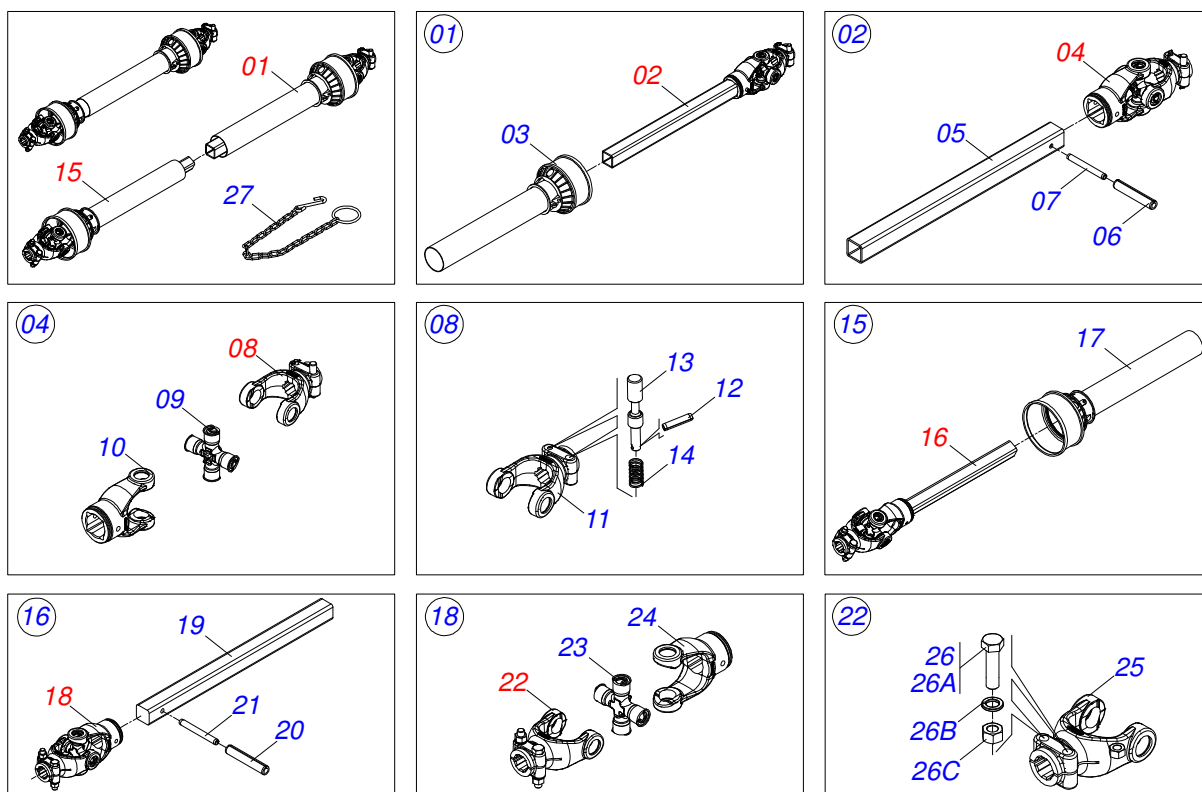
Item	Code	Description	See page	QT
01	0503062157	HEADER JACK		01



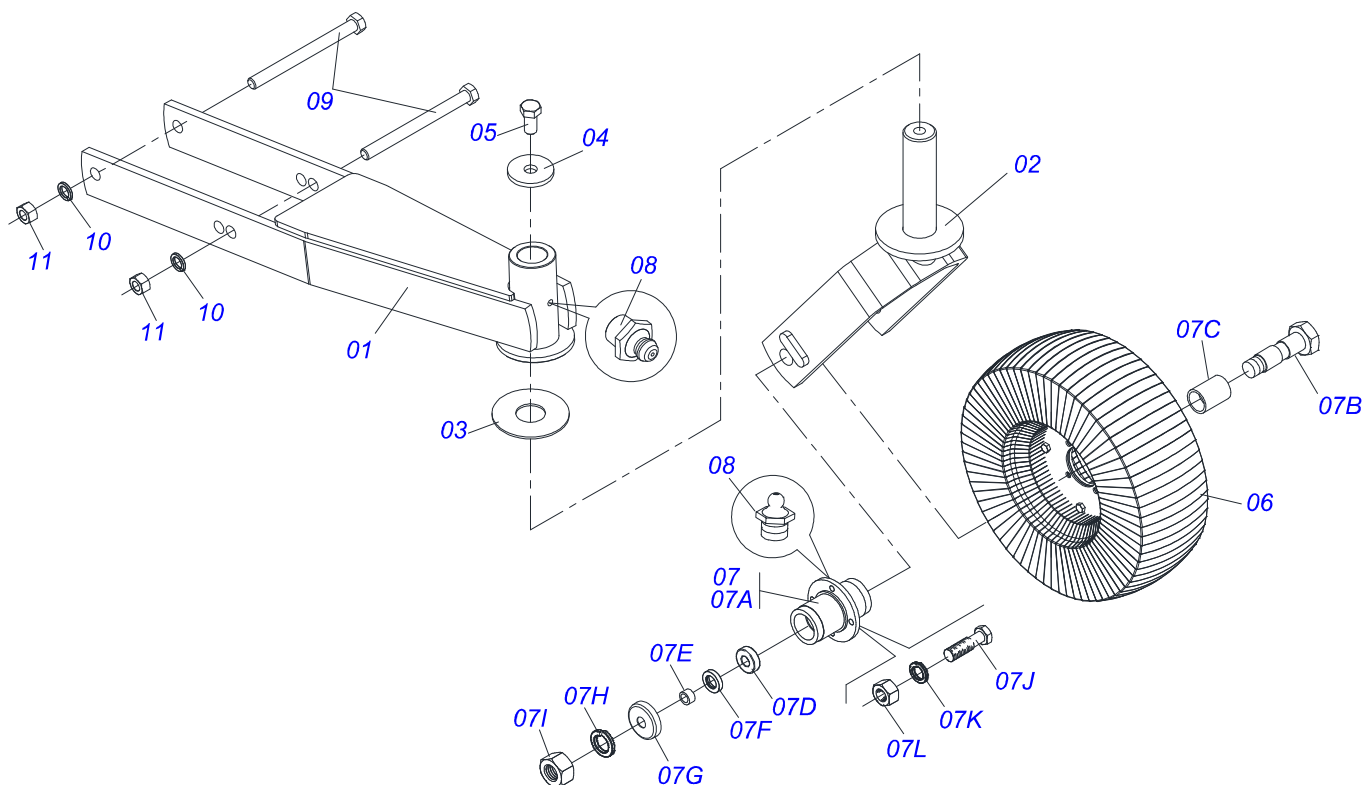
Item	Code	Description	See page	QT
01	0502011152	SMALLER COVER		01
02	0503030084	1/2" X 1/2" X 2.0" STUD		06
03	0503011440	SPRING WASHER		06
04	0503010028	1/2" NUT		06
05	0503011171	00912-BRG SEAL		01
06	0503010006	32210 ROLLER BEARING		03
07	0503030783	7.1" X 5.3" X 0.008" JOINT		05
08	0503050063	UPPER AXLE		01
09	0501010649	RATCHET CLICK		03
10	0503030051	0.2" X 1" X 0.1" COMPRESSION SPRING		06
11	0503060210	CROWN PINION SET		01
11A	0503050074	25Z CONICAL GEAR		01
11B	0503061048	PINION		01
12	0503010217	501040 CLAMPING RING (FOR AXLE)		01
13	0503010037	30207 ROLLER BEARING		01
14	0503030785	7.9" X 5.9" X 0.008" JOINT		03
15	0503010286	2-355 N 3006-9B O-RING		01
16	0503010396	501060 CLAMPING RING (FOR AXLE)		01
17	0503011190	SEAL RING		02
18	0503017877	PIN GUIDE		02
19	0503010562	1/2" X 1" BOLT		08
20	0503031604	1/2" BSP PLUG		01
21	0521018064	FLAT WASHER		01
22	0503011047	5089 SEAL		01
23	0511010142	LOCK RING		01
24	0502010984	LEFT MULTIPLIER BOX		01
25	0502011393	LOWER HUB		01



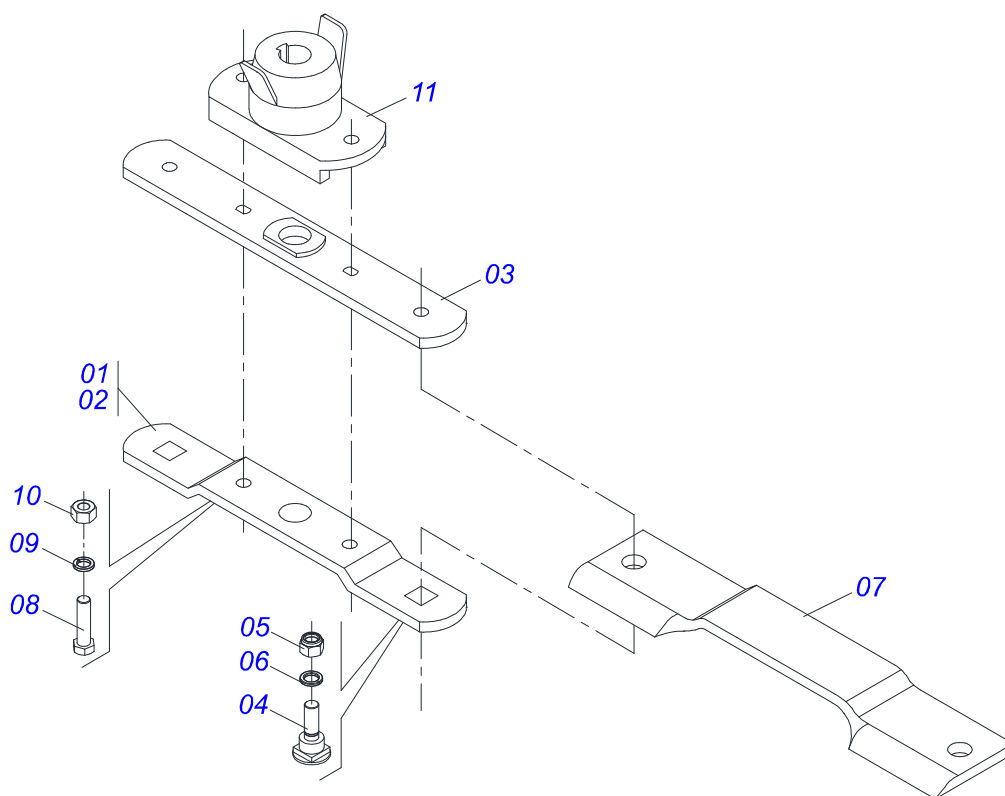
Item	Code	Description	See page	QT
01	0501052516	T6-60 TERMINAL WITH SCREW		02
01A	0502010830	6-60 STRIATED 1.3/8" TERMINAL		02
01B	0501047756	1/2" X 3" SET PARTS		02
01Ba	0503010479	BOLT		02
01Bb	0503010019	1/2" SPRING WASHER		02
01Bc	0503010060	1/2" NUT		02
02	0503010837	CARDAN CROSSPIECE		01



Item	Code	Description	See page	QT
01	0501051705	UNIVERSAL JOINT WITH SLEEVE/PROT		01
02	0501051707	UNIVERSAL JOINT WITH SLEEVE		01
03	0503012084	PROTECTION FOR UNIV JOINT AND SLEEV		01
04	0501051708	UNIVERSAL JOINT		01
05	0511010332	23" X 1.8" SQUARE SLEEVE		01
06	0503010843	0.4" X 3.3" SPRING PIN		01
07	0503011878	0.2" X 3.3" SPRING PIN		01
08	0501050334	1-60 TERMINAL WITH QUICK HITCH		01
09	0503010837	CARDAN CROSSPIECE		01
10	0502011422	2-60 TERMINAL		01
11	0502010568	1-60 STRIATED 1.3/8" TERMINAL		01
12	0503010838	0.1" X 0.8" SPRING PIN		02
13	0503037375	PIN QUICK COUPLING		02
14	0503030518	0.5"X1.0"X 0.1" COMPRESSION SPRING		02
15	0501051706	UNIVERSAL JOINT WITH AXLE/PROT		01
16	0501051709	UNIVERSAL JOINT WITH SHAFT		01
17	0503012085	PROTECTION FOR UNIV JOINT AND AXLE		01
18	0501051710	UNIVERSAL JOINT		01
19	0511010326	1.4" X 23" SQUARE SHAFT		01
20	0503011069	0.4" X 2.8" SPRING PIN		01
21	0503011805	0.2" X 2.8" SPRING PIN		01
22	0501052516	T6-60 TERMINAL WITH SCREW		01
23	0503010837	CARDAN CROSSPIECE		01
24	0502011424	3-60 TERMINAL		01
25	0502010830	6-60 STRIATED 1.3/8" TERMINAL		01
26	0501047756	1/2" X 3" SET PARTS		02
26a	0503010479	BOLT		01
26b	0503010019	1/2" SPRING WASHER		01
26c	0503010060	1/2" NUT		01
27	0503012023	CHAIN FOR PROTECTION		02



Item	Code	Description	See page	QT
01	0501069375	WHEEL SUPPORT		01
02	0501065266	WHELL FORK		01
03	0511013239	FLAT WASHER		01
04	0511010721	FLAT WASHER		01
05	0503010962	5/8" X 1-1/4" BOLT		01
06	0501050433	TIRE WHELL		01
07	0501051587	WHEELS BOX ASSY		01
07A	0502011286	WHEELS BOX ASSY		01
07B	0501017143	WHEEL AXLE		01
07C	0521010460	0.9" X 1.1" X 2.9" SLEEVE		01
07D	0503010269	6204 BALL BEARING		02
07E	0521010487	SPACER WASHER		02
07F	0503010268	00262-B SEAL		02
07G	0511014254	DUST CLOAK		01
07H	0503010023	3/4" SPRING WASHER		01
07I	0503010014	3/4" NUT		04
07J	0501010080	3/8" BOLT		04
07K	0503010025	3/8" SPRING WASHER		04
07L	0503010026	3/8" NUT		02
08	0503010002	1800 GREASE FITTING		01
09	0503010795	5/8" X 7" BOLT		02
10	0503010027	5/8" SPRING WASHER		02
11	0503010013	5/8" NUT		02



Item	Code	Description	See page	QT
01	0501056326	SUPPORT WITH ROTARY CUTTER BLADES		01
02	0561017368	ROTARY LOWER SUPPORT		01
03	0561017308	SUPPORT UPPER BASE		01
04	0511019000	BOLT		02
05	0503010812	7/8" UNF SELF LOCKING NUT		02
06	0503011447	SPRING WASHER		02
07	0622400057	21.6" X 3.94" X 0.5" ROTARY CUTTER		02
08	0503010901	3/4UNC 3.1/2 BOLT		02
09	0503010023	3/4" SPRING WASHER		02
10	0503010014	3/4" NUT		02
11	0502012453	SUPPORT FLANGE		01



www.marchesan.com.br



Technical Publications | Elaboration and Revision
LUIZ CANDIDO