

PARTS CATALOG

ROTARY CUTTERS

RC2E 3100 CL S-0304

Code: 0501091350



Series: S-0304

Review: MARÇO/04

ORIGINAL PARTS
TATU

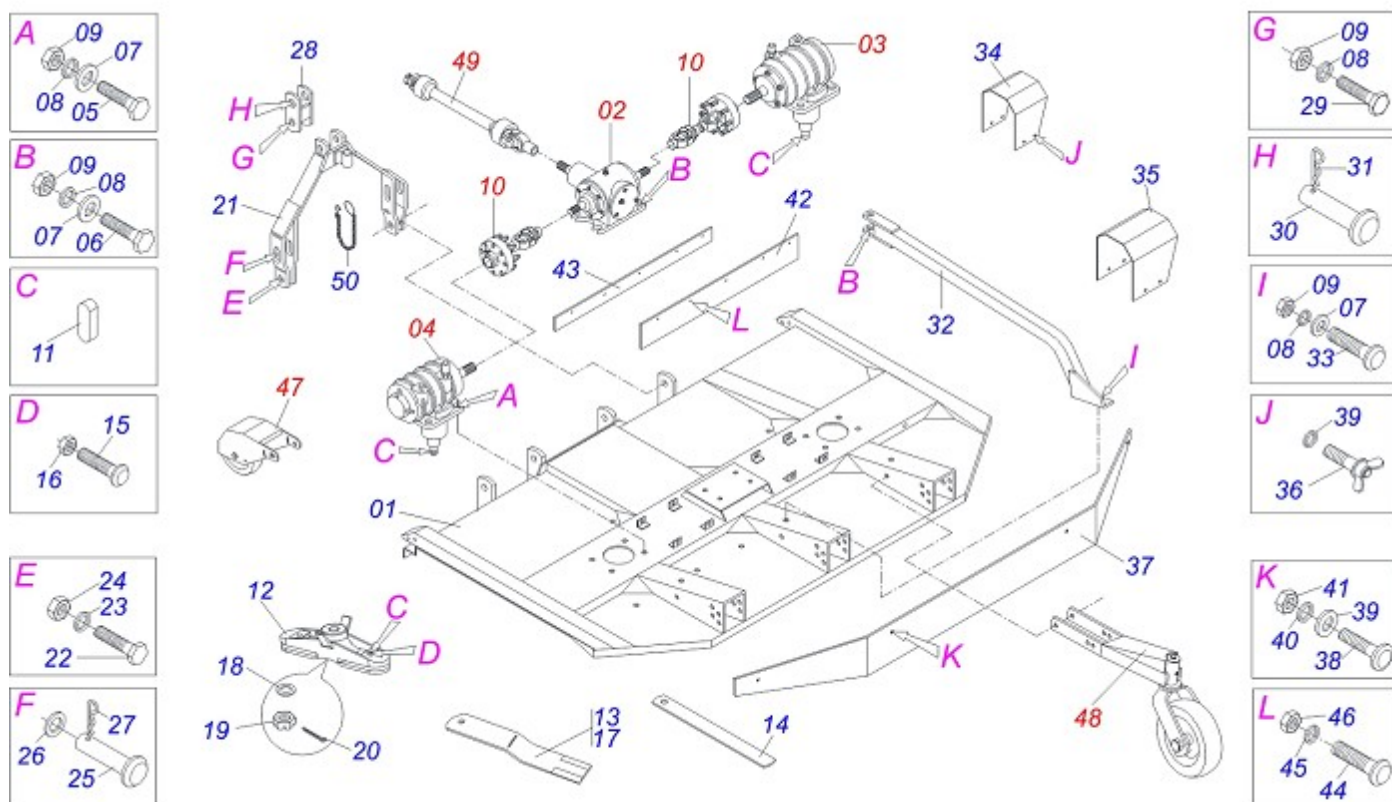


INDEX

0909090946	RC2/E 3100 CL FRAME ASSY	1
0501043535	DOUBLE DISTRIBUTOR	2
0511040092	MULTIPLIER SPEED MSE 1.3/8	3
0511040798	MULTIPLIER SPEED MSD 1.3/8	4
0511041381	DRIVE SHAFT	5
0909090713	CARDAN 40 X 400 T1/T9 C/P 0501048241 (STU)	6
0501047953	90 KGM FRICTION	7
0511040881	CARRYING WHEELS ASSY	8
0511040988	PROTECTION WHEELS FRONT ASSY	9
0501047948	DRIVE SHAFT	10
0909090712	CARDAN 60 X 900 T1/T6 C/P 0501047948 (STU)	11
0501043642	RUBBER WHEEL ASSY RC 3100	12

ATTENTION: **IMPORTANT**

MARCHESAN RESERVES THE RIGHT AT ANY TIME TO MAKE IMPROVEMENTS IN THE DESIGN, MATERIAL OR SPECIFICATIONS OF MACHINERY, EQUIPMENT OR PARTS WITHOUT THEREBY BECOMING LIABLE TO MAKE SIMILAR CHANGES IN MACHINERY, EQUIPMENT OR PARTS PREVIOUSLY SOLD.



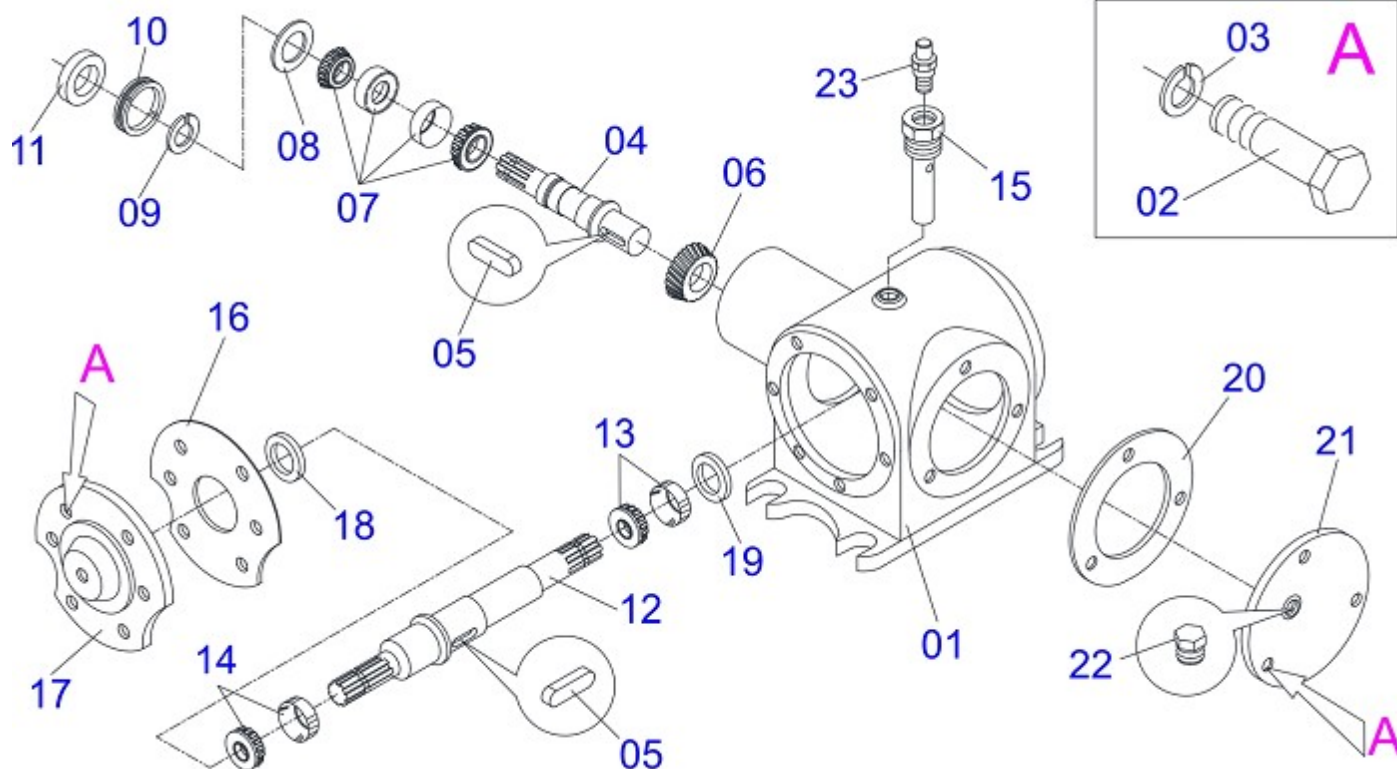
Item	Code	Description	QT
01	0511062004	RC2/E 3100 FRAME	01
02	0501043535	DOUBLE DISTRIBUTOR	01
03	0511040798	MULTIPLIER SPEED MSD 1.3/8	01
04	0511040092	MULTIPLIER SPEED MSE 1.3/8	01
05	0503010797	3/4" X 4" BOLT	08
06	0501010216	3/4" X 4-1/2" BOLT	05
07	0501010322	FLAT WASHER	13
08	0503010023	3/4" SPRING WASHER	15
09	0503010014	3/4" NUT	15
10	0511041381	DRIVE SHAFT	02
11	0501010536		04
12	0502011912	SUPPORT OF THE ROTARY CUTTER BLADES	01
13	0622400055	RH 24"X4"X0,5" ROTARY CUTTER BLADES	01
14	0531015055	620 FOLLOWER	01
15	0531014512	FASTERNER ROCADORES	01
16	0503010812	7/8" UNF SELF ADJUSTING NUT	01
17	0622400056	24"X4"X0,5" LEFT ROTARY CUT BLADES	01
18	0501017779	FLAT WASHER	02
19	0503011052	1.1/4" X 0.77" CASTLE NUT	02
20	0503010067	3/16" X 2.1/2" COTTER PIN	02
21	0511062006	DRAWBAR	01
22	0501010171	1" X 3-1/2" BOLT	02
23	0503010012	1" SPRING WASHER	02
24	0501010059	1" NUT HEX	02
25	0521010629	1.1" X 5.1" COUPLING SHAFT	02
26	0501010065	FLAT WASHER	02
27	0503030430	7/16 X 2" PIN LOCK	02
28	0501066445	SUPPLEMENT DRAWBAR	02
29	0503011198	3/4 X 6 BOLT	01
30	0521010578	0.9" X 4.3" COUPLING SHAFT	01
31	0503031035		01
32	0501067540	FRENCH HAND	01
33	0501017305	3/4" X 2-1/4" BOLT	01



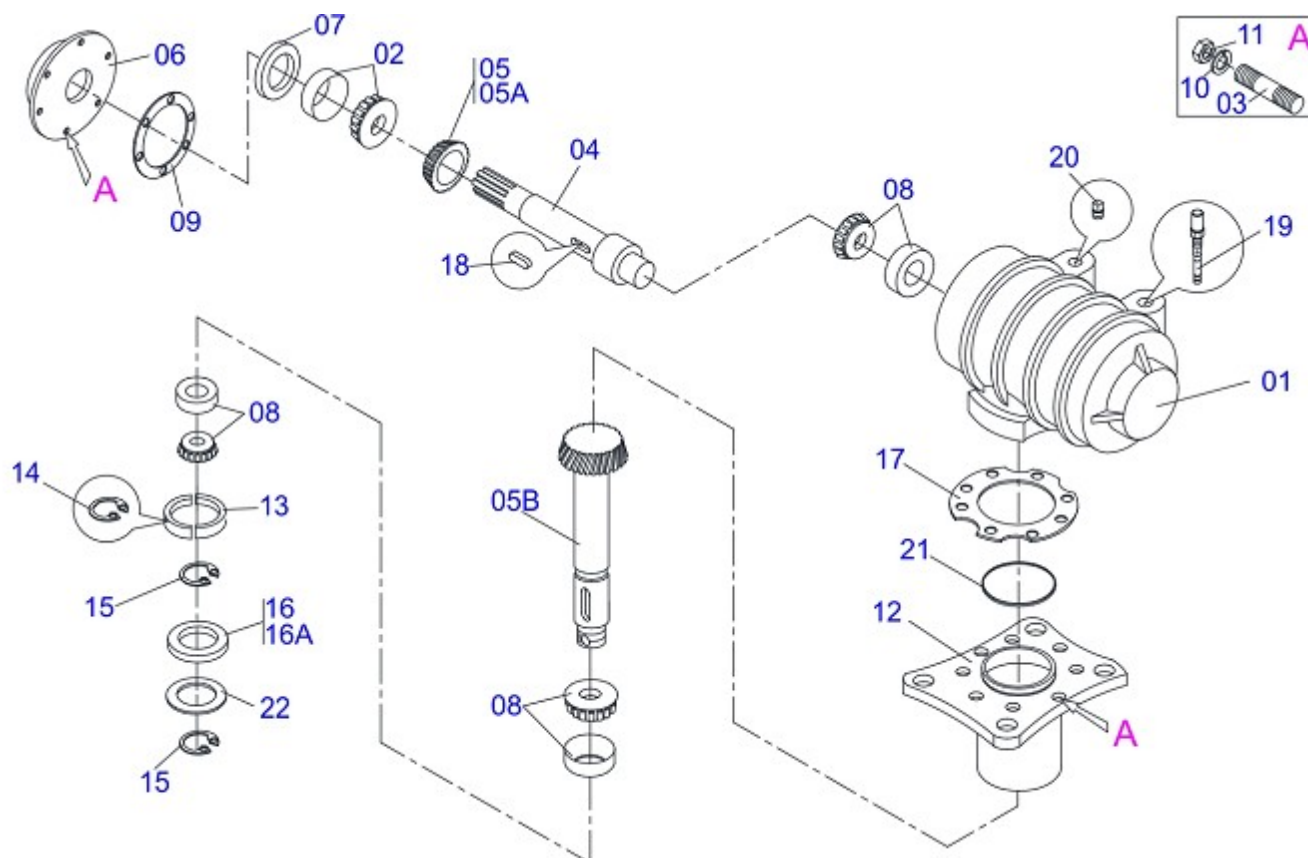
RC2/E 3100 CL FRAME ASSY

0909090946

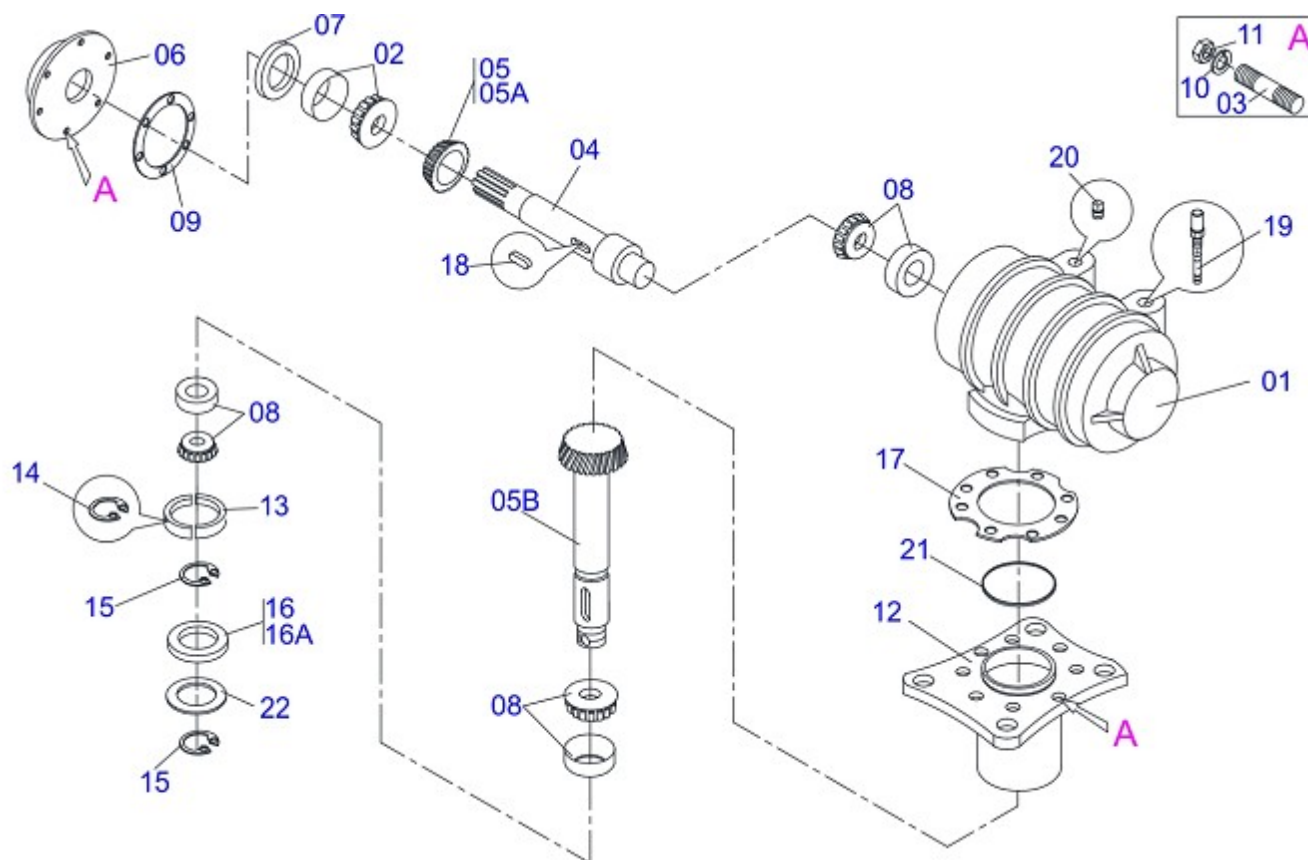
Item	Code	Description	QT
34	0531017847	SMALLER COVER PROTECTION	01
35	0531017848	LARGER COVER PROTECTION	01
36	0503012904	3/8" BUTTERFLY BOLT	08
37	0531015218	REAR PROTECTION RC2/E 3100	01
38	0501011600	1/2" X 1-1/4" BOLT	06
39	0511017302		06
40	0503010019		06
41	0503010020	1/2 NUT	06
42	0531014532	FRONT PROTECTION	01
43	0531017232	FRONT PROTECTION BAR FIXER	01
44	0503010849		05
45	0503010025		05
46	0503010026		05
47	0511040988	PROTECTION WHEELS FRONT ASSY	02
48	0511040881	CARRYING WHEELS ASSY	02
49	0501047948	DRIVE SHAFT	01
50	0503011981	17.7" CHAIN WITH HOOK/LINK	01



Item	Code	Description	
01	0502010801	HOUSING OF THE DISTRIBUTOR DOUBLE	01
02	0503010751	3/8" X 1.1/4" HEX BOLT G.5	09
03	0503011443	3/8" SPRING WASHER	09
04	0503030111	SMALLER AXLE	01
05	0501012993	0.4" X 1.1"KEYWAY SQUARE	04
06	0503060249	CONICAL GEAR SET FOR DOUBLE DISTRIBUTOR	01
07	0503010102	25577/25523 ROLLER BEARING	02
08	0503010637	25523 CAP	02
08.	0501010237	FLAT WASHER	01
09	0503010210	LOCK WASHER	01
10	0503010211	KM- 8 LOCKNUT	01
11	0503010079	5042 SEAL	01
12	0511010103	LARGER AXLE	01
13	0503010312	6207 BALL BEARING	01
14	0503010031	368A/362A ROLLER BEARING	01
15	0521014311	DOBLE DISTRIBUTOR HOLE BODY	01
16	0503030228	7.1" X 5.3" X 0.008" JOINT GASKET	02
17	0502020250	FRONT COVER	01
18	0503010082	00274-BG SEAL	01
19	0503010079	5042 SEAL	01
20	0503030341	6.4" X 0.008" JOINT GASKET	04
21	0502020160	COVER WITH DOUBLE DISTRIBUTOR	01
22	0503031604	1/2" BSP PLUG	01
23	0503010325	VCA-118 VALVE	01

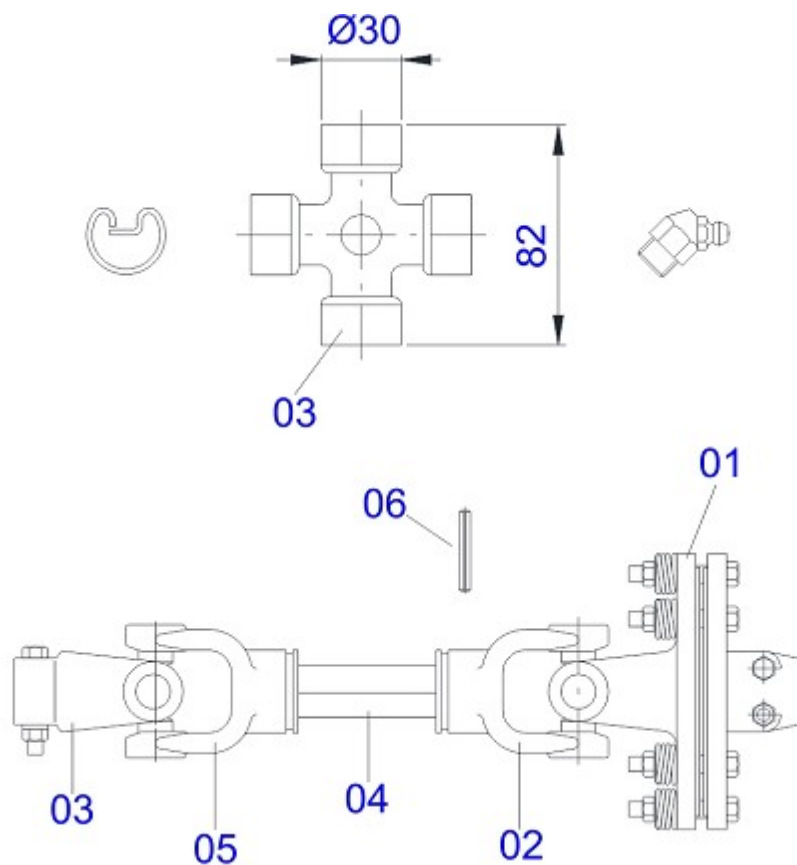


Item	Code	Description	QT
00	0511040092	MULTIPLIER SPEED MSE 1.3/8	01
01	0502010984	LEFT MULTIPLIER BOX	01
02	0503010037	30207 ROLLER BEARING	01
03	0503030084	1/2" X 1/2" X 2.0" PRISONER	14
04	0503050067	UPPER AXLE	01
05	0503060539	CROWN PINION SET	01
05A	0503031702	18Z CONICAL GEAR	01
05B	0503031701	PINION CONICAL 12Z EG1755	01
06	0502011152	SMALLER COVER	01
07	0503011171	00912-BRG SEAL	01
08	0503010006	32210 ROLLER BEARING	03
09	0503030783	7.1" X 5.3" X 0.008" JOINT GASKET	03
10	0503011440	1/2" SPRING WASHER	14
11	0503010028	1/2" NUT	14
12	0502010985	LOWER HUB	01
13	0511010142	LOCK RING	01
14	0503010396	501060 CLAMPING RING (FOR AXLE)	01
15	0503011190	502090 CLAMPING RING (FOR AXLE)	02
16	0503011047	5089 SEAL	01
16A	0503011201	5089 SEAL WITH HOLE	01
17	0503030785	7.9" X 5.9" X 0.008" JOINT GASKET	03
18	0501010536		02
19	0501110186	OIL SMALLER LEVEL INDICATOR	01
20	0503010123	1/2" BSPT PLUG	02
21	0503010286	2-355 N 3006-9B O'RING	01
22	0521018064	FLAT WASHER	01

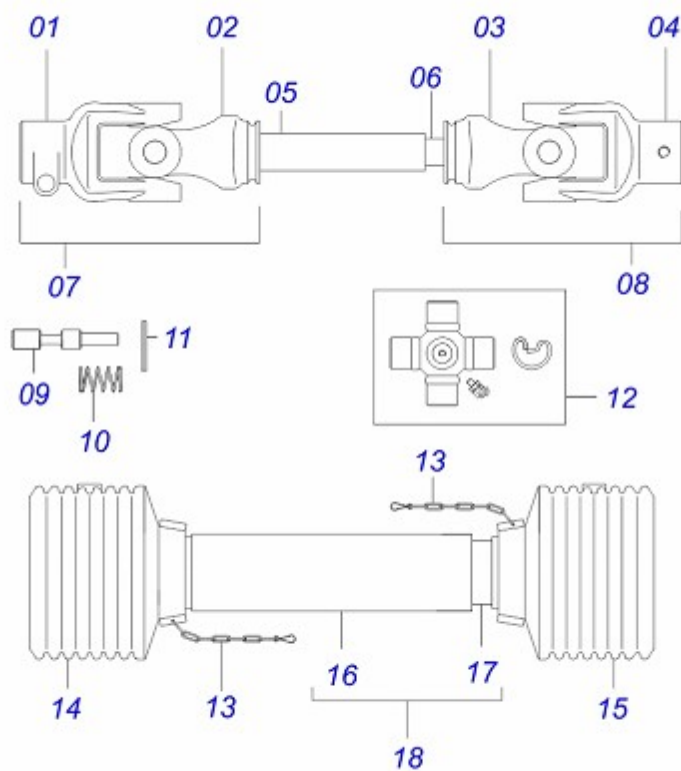


Item	Code	Description	QT
00	0511040798	MULTIPLIER SPEED MSD 1.3/8	01
01	0502010983	RIGHT MULTIPLIER BOX	01
02	0503010037	30207 ROLLER BEARING	01
03	0503030084	1/2" X 1/2" X 2.0" PRISONER	14
04	0503050068	UPPER AXLE	01
05	0503060539	CROWN PINION SET	01
05A	0503031702	18Z CONICAL GEAR	01
05B	0503031701	PINION CONICAL 12Z EG1755	01
06	0502010986	SMALLER COVER	01
07	0503011171	00912-BRG SEAL	01
08	0503010006	32210 ROLLER BEARING	03
09	0503030783	7.1" X 5.3" X 0.008" JOINT GASKET	03
10	0503011440	1/2" SPRING WASHER	14
11	0503010028	1/2" NUT	14
12	0502010985	LOWER HUB	01
13	0511010142	LOCK RING	01
14	0503010396	501060 CLAMPING RING (FOR AXLE)	01
15	0503011190	502090 CLAMPING RING (FOR AXLE)	02
16	0503011047	5089 SEAL	10
16A	0503011201	5089 SEAL WITH HOLE	01
17	0503030785	7.9" X 5.9" X 0.008" JOINT GASKET	03
18	0501010536		02
19	0501110186	OIL SMALLER LEVEL INDICATOR	01
20	0503010123	1/2" BSPT PLUG	01
21	0503010286	2-355 N 3006-9B O-RING	01
22	0521018064	FLAT WASHER	01

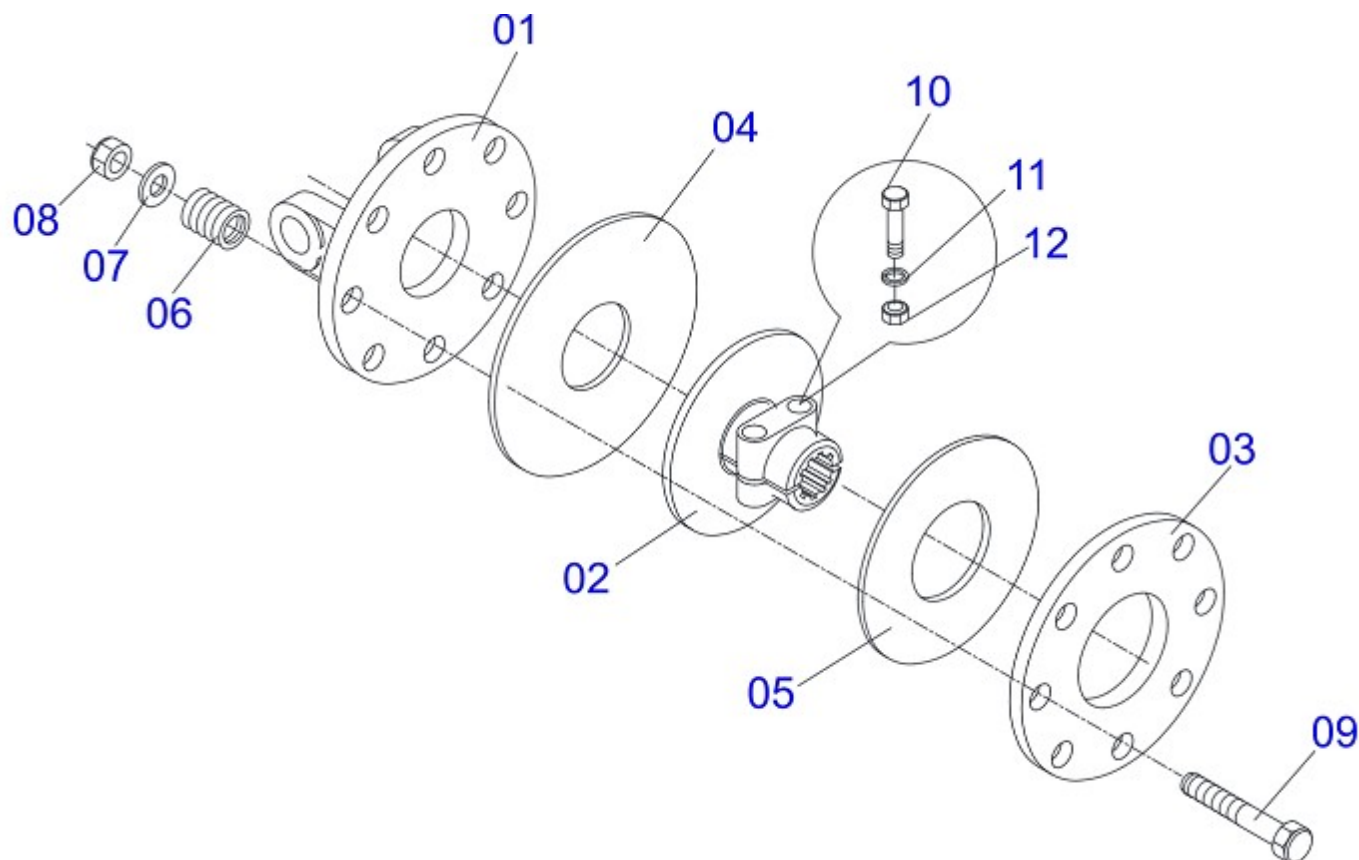
DRIVE SHAFT



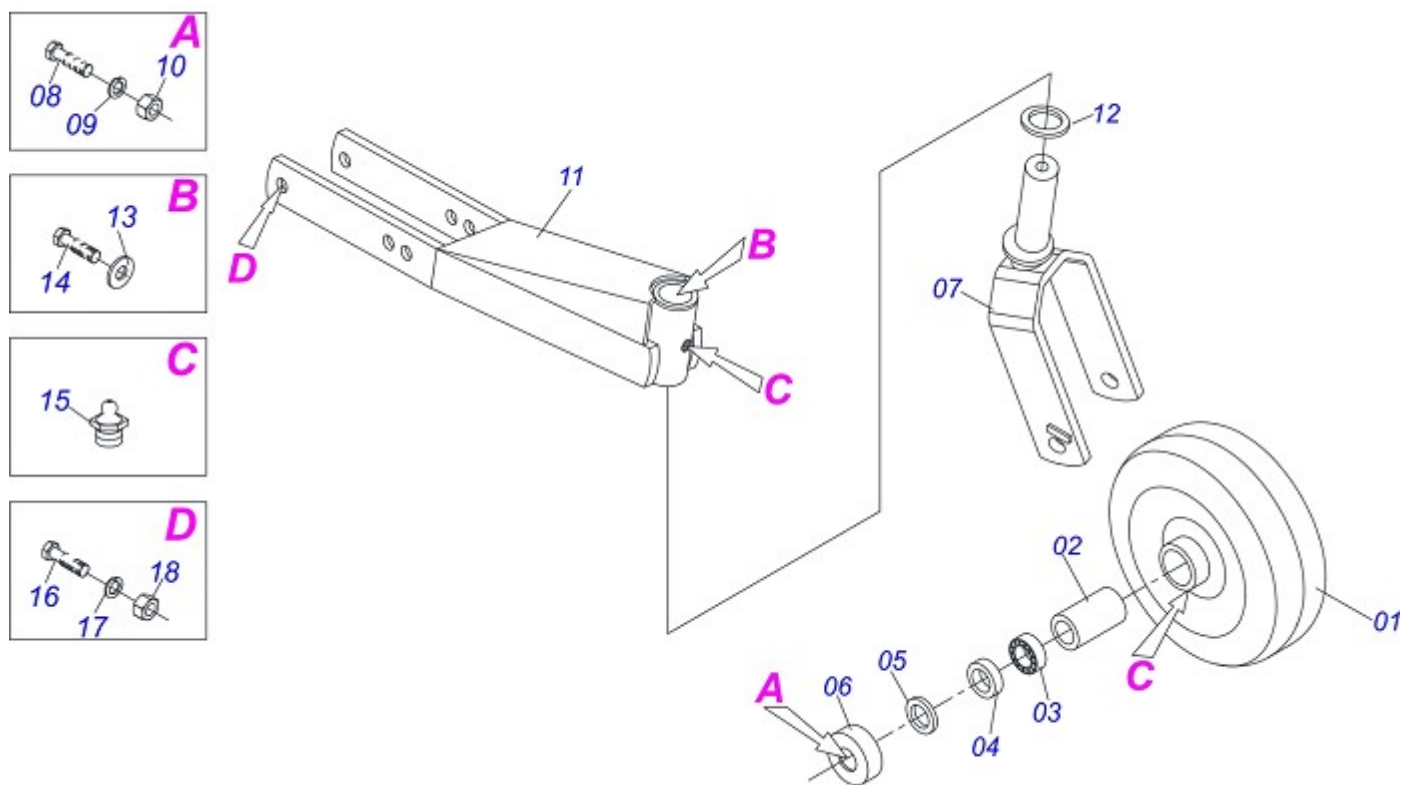
Item	Code	Description	
01	0501047953	90 KGM FRICTION	01
02	0503013130	CC266/F TERMINAL	01
03	0503012096	CROSSPIECE	01
04	0503013133	STRIATED AXLE	01
05	0503013131	CC266 TERMINAL	01
06	0503011877	0.3" X 2.4" ELASTIC PIN	02
07	0503012096	CROSSPIECE	01
08	0503013132	CC292 TERMINAL	01



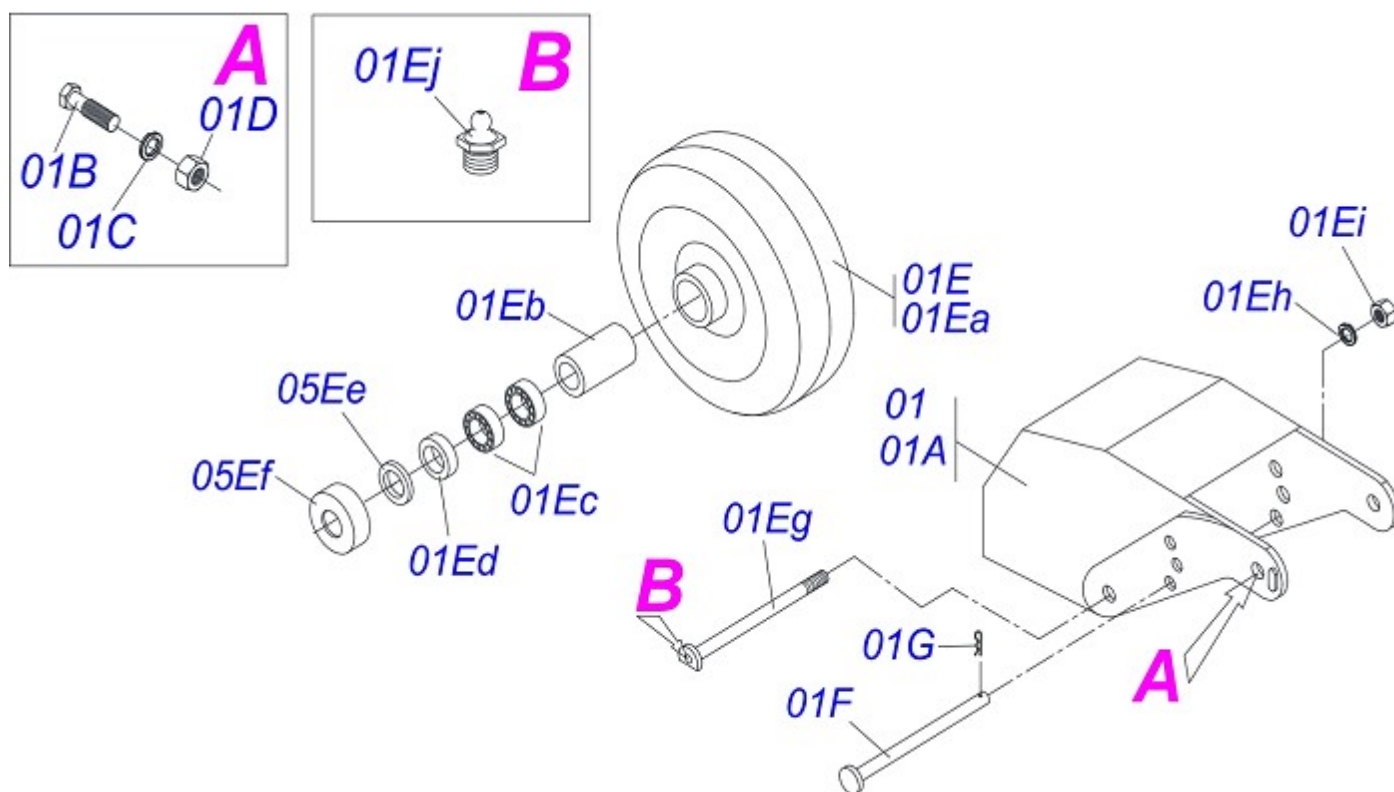
Item	Code	Description	QT
01	0503017647		01
02	0503017648		01
03	0503017649		01
04	0503017658		01
05	0503017642		01
06	0503017643		01
07	0503062344		01
08	0503062345		01
09	0503017626		01
10	0503017627		01
11	0503017628		01
12	0503017644		02
13	0503017631		02
14	0503017632		01
15	0503017633		01
16	0503017677		01
17	0503017678		01
18	0503062352		01



Item	Code	Description	
00	0501047953	90 KGM FRICTION	01
01	0503012095	FRONT FLANGE	01
02	0503011869	CENTRAL FLANGE	01
03	0503011870	REAR FLANGE	01
04	0503031474	INNER FRICTION DISC	01
05	0503031478	OUTER FRICTION DISC	01
06	0503030630	1.02"X1.3"X0.2" COMPRESSION SPRING	08
07	0511017302		08
08	0503011336	1/2" HEX SELF ADJUSTING NUT	08
09	0503010752	1/2" X 3.1/2" BOLT	08
10	0503010741	1/2" X 2-3/4" BOLT	02
11	0503010019		02
12	0503010060	1/2" NUT	02

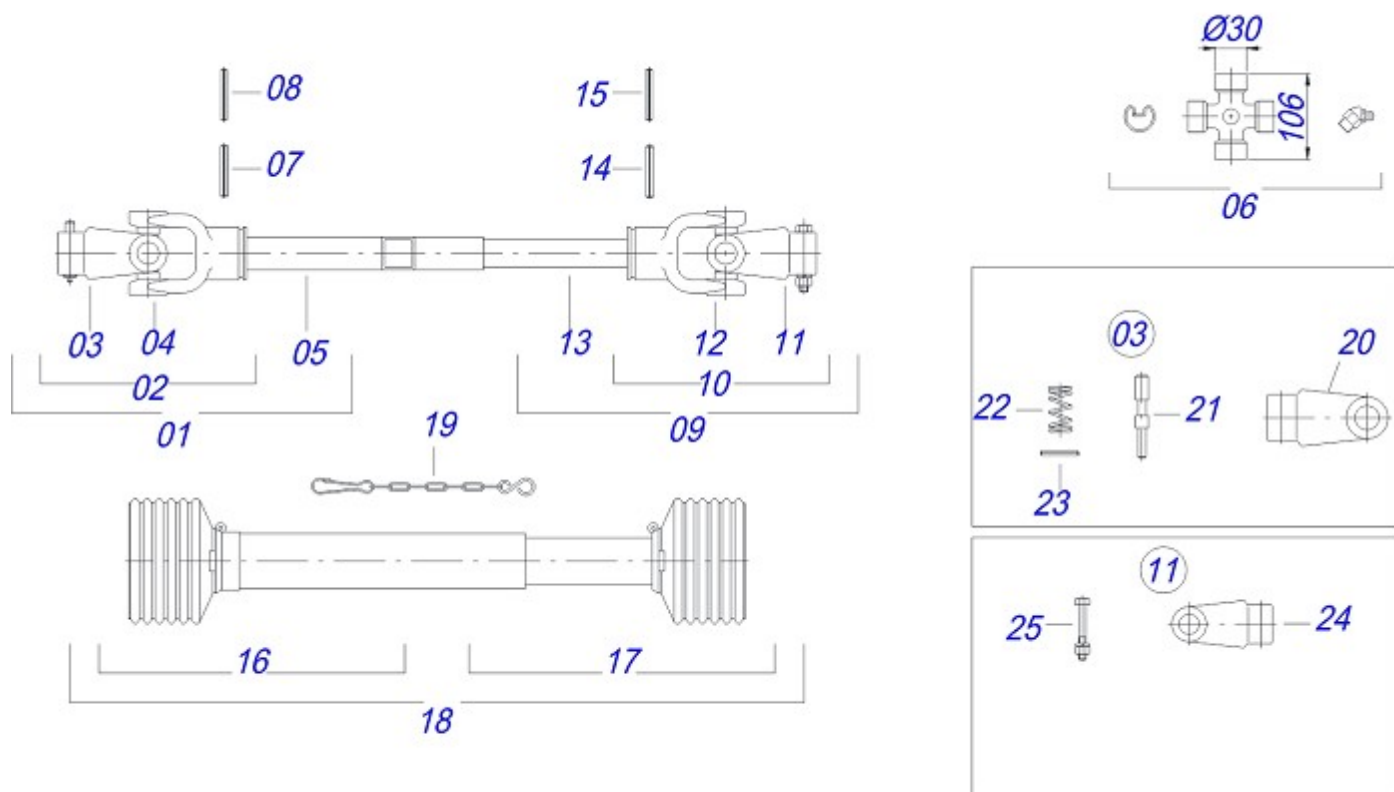


Item	Code	Description	QT
00	0511040881	CARRYING WHEELS ASSY	01
01	0501063309	13.8" X 4.33" WHEEL ASSY	01
02	0521010460	0.9" X 1.1" X 2.9" SLEEVE	01
03	0503010269	6204 BALL BEARING	02
04	0521010487	SPACER WASHER	02
05	0503010268	00262-B SEAL	02
06	0511014254	DOOR HOSE	02
07	0511063515	WHEEL FORK	01
08	0501017143	WHEEL AXLE	01
09	0503010023	3/4" SPRING WASHER	01
10	0503010014	3/4" NUT	01
11	0501069375	WHEEL SUPPORT	01
12	0511013239	FLAT WASHER	01
13	0511010721	FLAT WASHER	01
14	0503010962	5/8" X 1-1/4" BOLT	01
15	0503010002	GREASE FITTING	02
16	0503010795	5/8" X 7" BOLT	02
17	0503010027	5/8" SPRING WASHER	02
18	0503010013	5/8" NUT	02

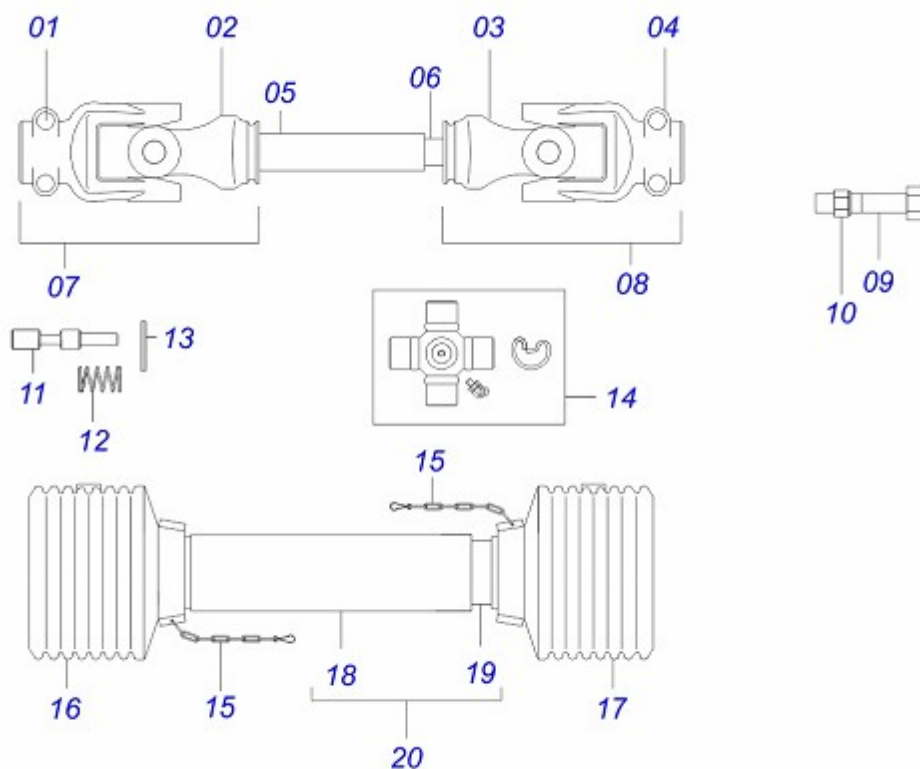


Item	Code	Description	
00	0511040988	PROTECTION WHEELS FRONT ASSY	01
01	0511061700	COVER FRONT WHEEL SUPPORT	01
02	0503012951	3/4" X 10-1/2" BOLT	01
03	0503010023	3/4" SPRING WASHER	02
04	0503010014	3/4" NUT	02
05	0501053885	ARM FRONT WHELL	01
05A	0511063509	14" X 8" WHELL	01
05B	0531014502	0.9" X 1.1" X 6.3" SLEEVE	01
05C	0503010269	6204 BALL BEARING	04
05D	0521010487	SPACER WASHER	02
05E	0503010268	00262-B SEAL	02
05F	0511014254	DOOR HOSE	02
05G	0551011854	REAR CARRYING WHEELS AXLE	01
05H	0503010002	GREASE FITTING	01
06	0531014507	0.6" X 10" COUPLING SHAFT	01
07	0503030168	3 X 50 HAIR PIN	01

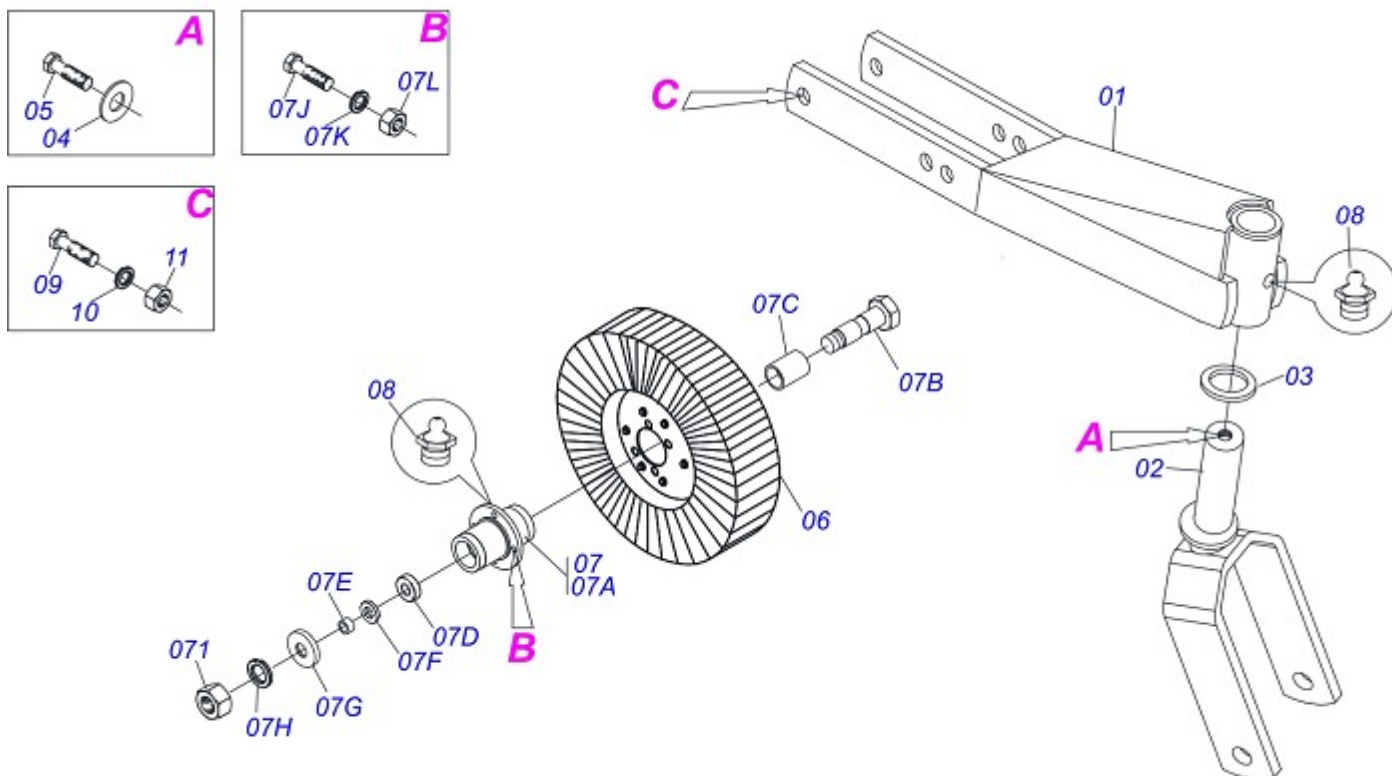
DRIVE SHAFT



Item	Code	Description	
00	0501051699	UNIVERSAL JOINT WITH SLEEVE/PROT	01
00A	0501051700	UNIVERSAL JOINT WITH AXLE/PROT	01
01	0501051711	UNIVERSAL JOINT WITH SLEEVE	01
02	0501051708	UNIVERSAL JOINT	01
03	0501050334	1-60 TERMINAL WITH QUICK HITCH	01
04	0502011422	2-60 TERMINAL	01
05	0511013025	35" X 1.8" SQUARESLEEVE	01
06	0503010837	CARDAN CROSSPIECE	02
07	0503010843	0.4" X 3.3" ELASTIC PIN	01
08	0503011878	0.2" X 3.3" ELASTIC PIN	01
09	0501051712	UNIVERSAL JOINT WITH SHAFT	01
10	0501051710	UNIVERSAL JOINT	01
11	0501052516	T6-60 TERMINAL WITH SCREW	01
12	0502011424	3-60 TERMINAL	01
13	0511013026	1.4" X 35" SQUARE SHAFT	01
14	0503011069	0.4" X 2.8" ELASTIC PIN	01
15	0503011805	0.2" X 2.8" ELASTIC SPRING PIN	01
16	0503012075	PROTECTION FOR UNIV JOINT AND SLEEV	01
17	0503012076	PROTECTION FOR UNIV JOINT AND AXLE	01
18	0503012074	PROTECTION ASSY	01
19	0503012023	CHAIN FOR UNIV JOINT PROTECTION	02
20	0502010568	1-60 STRIATED 1.3/8" TERMINAL	01
23	0521010638	0.5" X 3.3" QUIC HITCH COUPL SHAFT	01
24	0503030518	0.5" X 1.0" X 0.1" COMPRESSION SPRING	01
25	0503010838	0.1" X 0.8" ELASTIC PIN	01
26	0502010830	6-60 STRIATED 1.3/8" TERMINAL	01
27	0501047759	1/2" X 3-1/2" BOLT ASSY	01
27A	0503010752	1/2" X 3.1/2" BOLT	01
27B	0503010019		01
27C	0503010060	1/2" NUT	01



Item	Code	Description	QT
01	0503017647		01
02	0503017672		01
03	0503017673		01
04	0503017674		01
05	0503017687		01
06	0503017685		01
07	0503062347		01
08	0503062348		01
09	0503017645		01
10	0503017646		01
11	0503017626		01
12	0503017627		01
13	0503017628		01
14	0503017667		02
15	0503017631		02
16	0503017680		01
17	0503017681		01
18	0503017682		01
19	0503017683		01
20	0503062354		01



Item	Code	Description	
01	0501043642	RUBBER WHEEL ASSY RC 3100	01
01A	0501069375	WHEEL SUPPORT	01
02	0501065266	WHELL FORK	01
03	0511013239	FLAT WASHER	01
04	0511010721	FLAT WASHER	01
05	0503010962	5/8" X 1-1/4" BOLT	01
06	0501050433	TIRE WHELL	01
07	0501051587	WHEELS BOX ASSY	01
07A	0502011286	WHEELS BOX ASSY	01
07B	0501017143	WHEEL AXLE	01
07C	0521010460	0.9" X 1.1" X 2.9" SLEEVE	01
07D	0503010269	6204 BALL BEARING	02
07E	0521010487	SPACER WASHER	02
07F	0503010689	SEAL 00763-BR	02
07G	0511011001	DUST CLOAK	01
07H	0503010023	3/4" SPRING WASHER	01
07I	0503010014	3/4" NUT	04
07J	0501010080	3/8" X 1-1/2" BOLT	04
07K	0503010025		04
07L	0503010026		02
08	0503010002	GREASE FITTING	01
09	0503010795	5/8" X 7" BOLT	02
10	0503010027	5/8" SPRING WASHER	02
11	0503010013	5/8" NUT	02



MARCHESAN IMPLEMENTOS E MÁQUINAS AGRÍCOLAS TATU S.A.
AV. Marchesan, 1979 - Post office box, 131 - CEP 15994-900 - Matão - SP - Brazil
Phone +55 16.3382-8282
(FAX Parts) + 55 16.3382. 8297 - (Export) + 55 16.3382.1003
e.mail: tatu@marchesan.com.br www.marchesan.com.br

Drafting and Illustration = GASPARI
e.mail = jgaspari@marchesan.com.br

**ORIGINAL PARTS
TATU**

