

# ***PARTS CATALOG***

## **IMPLEMENTS FOR SUGAR CANE**

### **SACM/L MEC**

**Code: 0501091300**



**Series: S-0306**

**Rev.: 00**

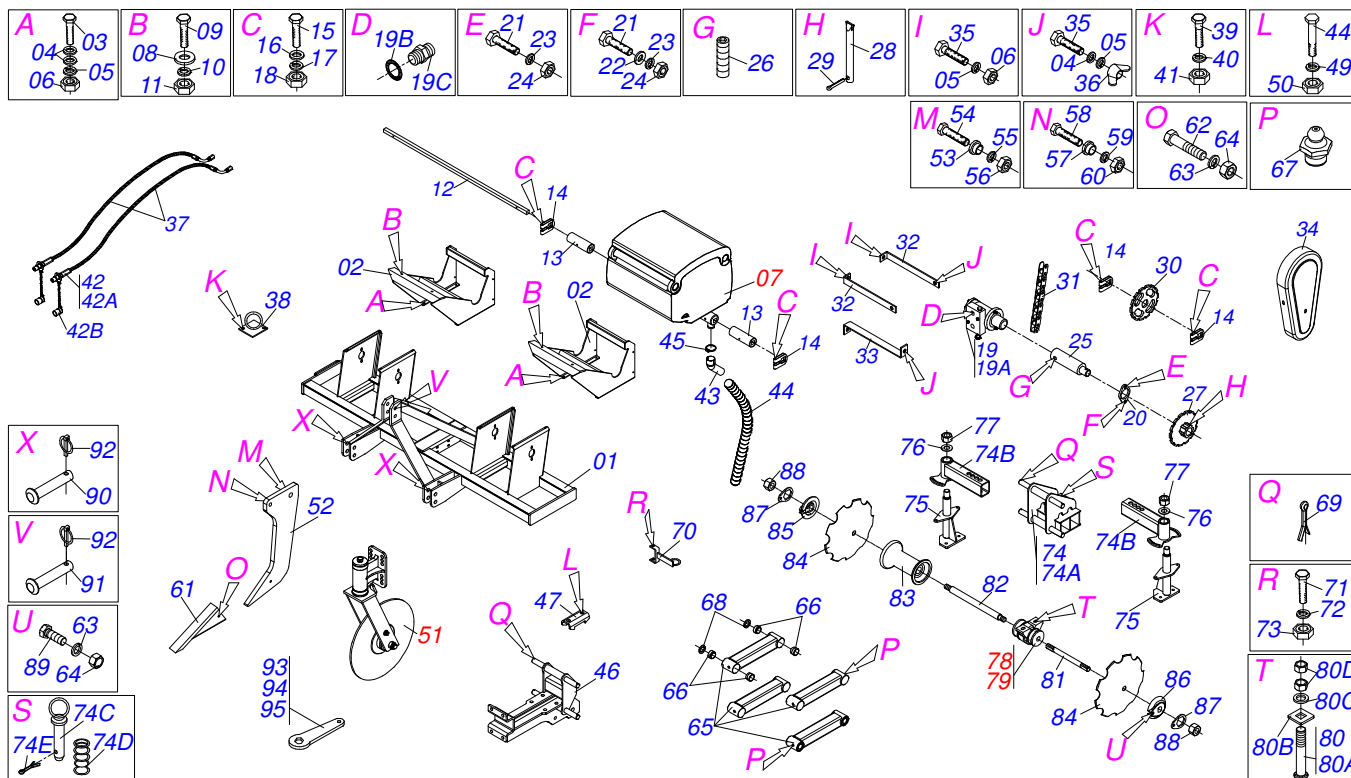
**Date Rev.: MARÇO/2006**

**ORIGINAL PARTS  
TATU**



# INDEX

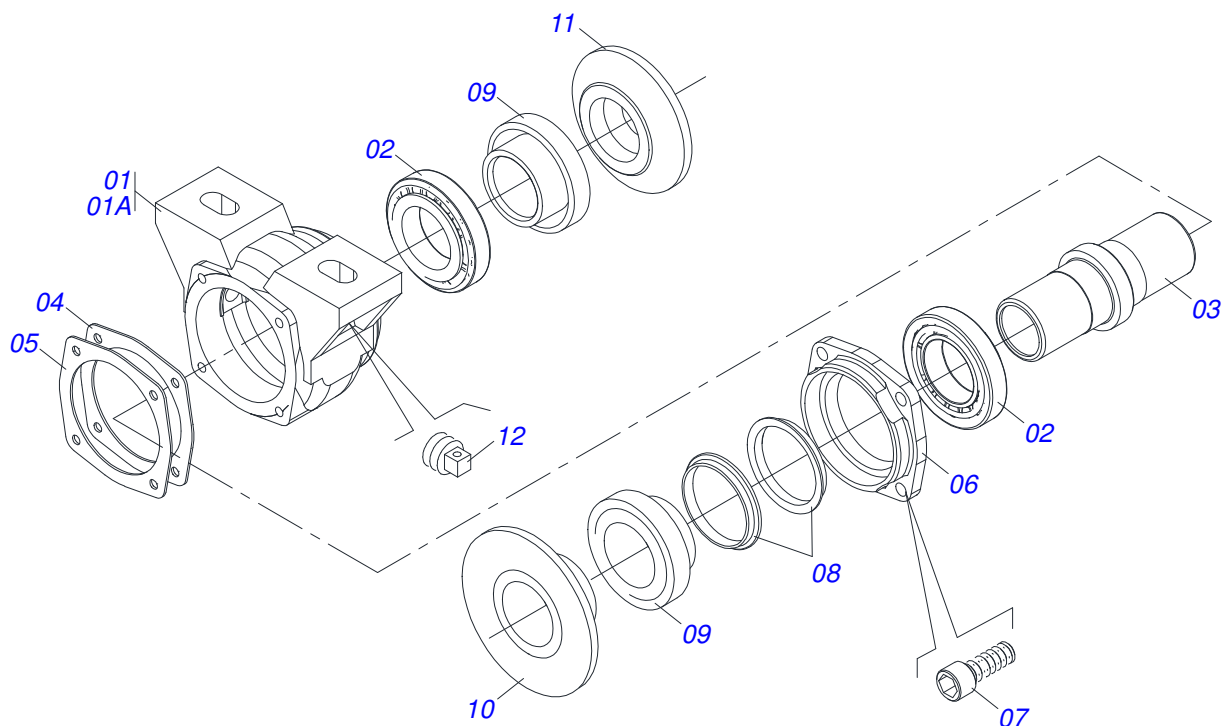
0909091462	FRAME SACM/L	.....	1
0909090433	OIL BATH BEARING	.....	2
0501057078	BEAN FERTILIZER ASSY	.....	3
0511044355	24" BLADE DISC ASSY	.....	4
0909091464	FRAME MECHANICAL SACML	.....	5
0511045044	20" BLADE DISC ASSY	.....	6
0501056287	SPEED BOX VARIADOR	.....	7



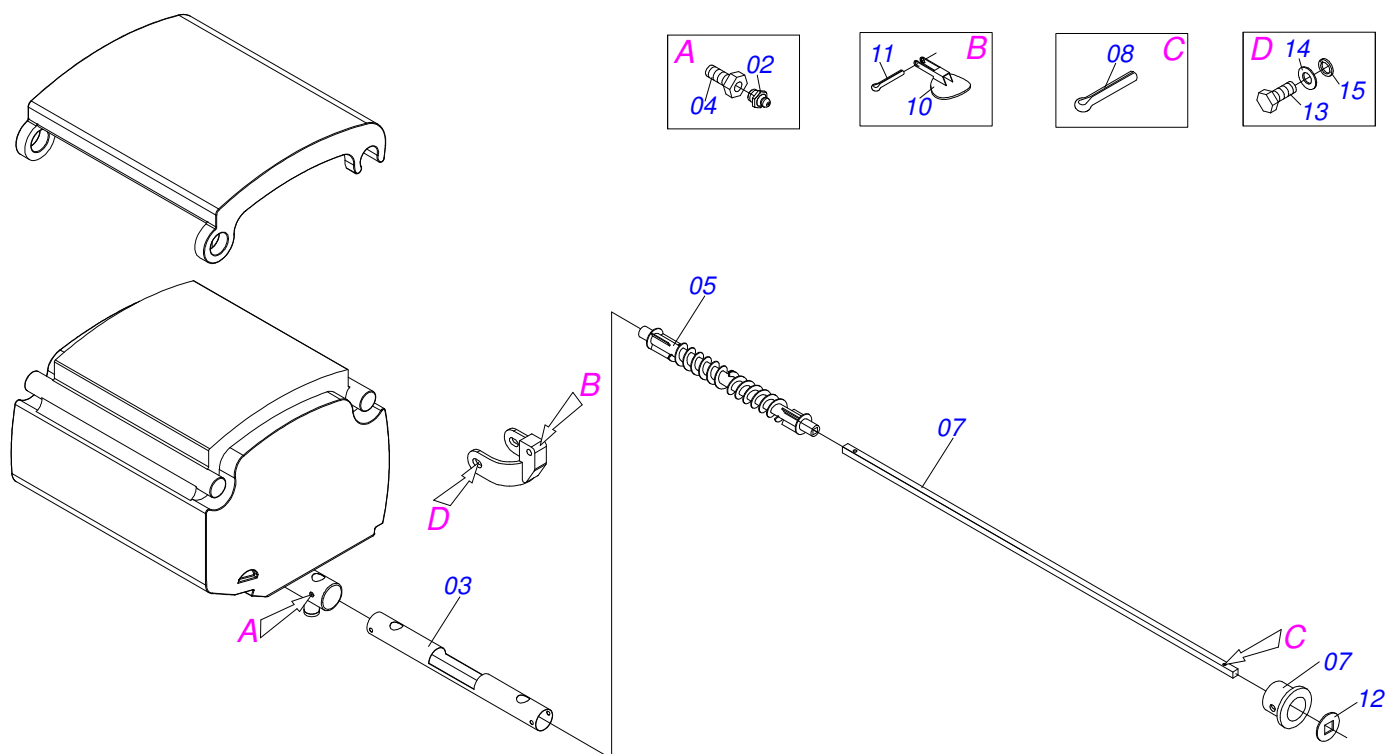
Item	Code	Description	QT
01	0511067623	FRAME	01
02	0511067625	FERTILIZER BEAM SUPPORT	02
03	0503010849	3/8" X 1-1/2" BOLT	08
04	0501010984	FLAT WASHER	19
05	0503010025	3/8 SPRING WASHER	13
06	0503010026	3/8" NUT	10
07	0501057078	BEAN FERTILIZER ASSY	02
08	0501010145	FLAT WASHER	04
09	0503010740	1/2" X 2" BOLT	04
10	0503010019	1/2" SPRING WASHER	04
11	0503010060	1/2" NUT	04
12	0511011539	3/4" SQUARE SHAFT	01
13	0502012007	SQUARE SLEEVE	02
14	0521010691	AXLE FASTENER	02
15	0503010373	1/4" X 2" BOLT	02
16	0511017303	FLAT WASHER	02
17	0503010143	SPRING WASHER	02
18	0503010144	1/4" NUT	02
19	0501053421	VALVE MOTOR HYDRAULIC ASSY	01
19A	0503012829	VALVE HYDRAULIC MOTOR ASSY	01
19B	0503010045	2-116 N 3006-9B O'RING	02
19C	0501010590	7/8" REDUCTION NIPPLE	02
20	0541019115	HYDRAULIC MOTOR FLANGE	01
21	0503011172	1/2" X 2-1/2" BOLT	02
22	0511017302	FLAT WASHER	01
23	0503010019	1/2" SPRING WASHER	02
24	0503010060	1/2" NUT	02
25	0511067266	HIDRAULIC MOTOR AXLE	01
26	0503011136	1/2" X 1/2" CSI BOLT	01
27	0502010411	10Z GEAR	01
28	0521010530	COUPLING SHAFT	01
29	0503010140	1/8" X 3/4" COTTERPIN	01
30	0502011318	10Z GEAR	01

Item	Code	Description	QT
31	0503013996	2050 CHAIN X 28 LINK + REDUCTION	01
32	0541019406	CHAIN CAP UPPER SUPPORT	02
33	0541019404	CHAIN CAP LOWER SUPPORT	01
34	0541019618	CHAIN CAP	01
35	0503011087	3/8" X 1" BOLT	05
36	0503010209	3/8" UNC BUTTERFLY NUT	03
37	0501080097	1/2" X 98" TC-TM HOSE ASSY	02
38	0511062800	HOSE ASSY FIZER	01
39	0503010371	5/16" X 1" BOLT	02
40	0503010179	SPRING WASHER	02
41	0503010033	7.50 X 16 INNER TIRE	02
42	0501053834	MALE QUICK COUPLING AGRICULTURAL WITH	02
42A	0503011637	UNIVERSAL JOINT	02
42B	0503011882	QUICK CONNECTION COVER	02
43	0503031050	CURVED CONDUCTOR	04
44	0521015491	2" X 1200 HOSE	04
45	0503010246	CLAMP	04
46	0511067624	MOBILE FRAME	02
47	0551011189	FIXER MOBILE FRAME	04
48	0501011545	3/4" X 6-1/2" BOLT	08
49	0503010023	SPRING WASHER	08
50	0503010014	3/4" NUT	08
51	0511045044	20" BLADE DISC ASSY	02
52	0511067627	SUBSOILER ROD	02
53	0551011192	25,80 X 50,80 X 26 SLEEVE	02
54	0501010392	1" X 5" BOLT	02
55	0503010012	1" SPRING WASHER	02
56	0501010059	1.5/8 NUT	02
57	0551011191	19,84 X 38,10 X 26 SLEEVE	02
58	0503011328	3/4" X 4" BOLT	02
59	0503010023	SPRING WASHER	02
60	0503010014	3/4" NUT	02
61	0501069659	SUBSOILER TIP	02
62	0501010160	1/2" X 3" BOLT	02
63	0503010019	1/2" SPRING WASHER	02
64	0503010060	1/2" NUT	02
65	0511060990	ROCKING DRIVER	08
66	0521012122	DRIVER ROCKING SLEEVE SUPPORT	32
67	0503010002	1800 GREASE FITTING	16
68	0551011190	FLAT WASHER	16
69	0503010523	1/4" X 2" COTTERPIN	16
70	0511067647	HOSE HOLDER	04
71	0503010295	5/16" X 5/8" BOLT	04
72	0503010179	SPRING WASHER	04
73	0503010337	5/16" NUT	04
74	0501057083	ROCKING HORROW FRAME	02
74A	0511067628	ROCKING HORROW	02
74B	0501069469	DISC REG DRIVER REG	02
74C	0501069472	DRIVER REG LOCK PIN	02
74D	0503030978	COMPRES SPRING	02
74E	0503010038	3/16 X 2 COTTERPIN	02
75	0511063098	DISC SUPPORT UPPER	04
76	0521012120	WASHER	04
77	0503010290	SELF ADJUSTING 1.1/2" UNF NUT	04
78	0501049008	7.2" X 1-1/4" OIL BATH BEARING	02
79	0501049009	7.2" X 1-1/4" OIL BATH BEARING	02
80	0501048963	5/8" X 2-1/2" BOLT ASSY	08
80A	0501014177	5/8" X 2-1/2" BOLT	08
80B	0501010947	5/8 NUT LOCK	08
80C	0501012140	FLAT WASHER	08
80D	0503010013	5/8" NUT	16
81	0521012160	1.1/4" X 290 AXLE	02

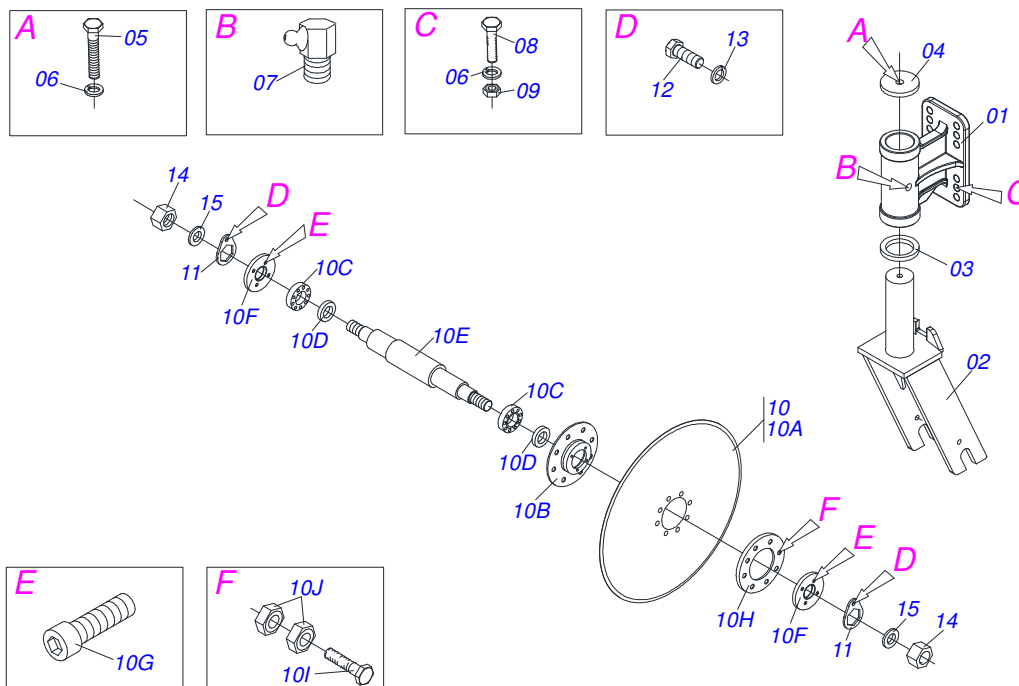
Item	Code	Description	QT
82	0501010752	1.1/4" X 500 AXLE	02
83	0502020052	181 SPACER	02
84	0602025011	0.7" X 0.2" NOTCHED DISC BLADE	10
85	0502010834	1-1/4" INNER AXLE WASHER	04
86	0502010835	1-1/4" EXTERNAL AXLE WASHER	04
87	0501010455	1.1/4" NUT LOCK	08
88	0501010087	1.1/4" NUT	08
89	0501010161	1/2" X 1.1/4" BOLT	08
90	0521010595	1.1" X 4.3" COUPLING SHAFT	02
91	0521010579	COUPLING SHAFT	01
92	0503030085	LOCK PIN	03
93	0531014773	2.3 CABLE FLAT WRENCH HEX	01
94	0521012199	1.6" GANG BOLT WRENCH	01
95	0521012200	2" CABLE FLAT WRENCH	01



Item	Code	Description	QT
00	0501049008	7.2" X 1-1/4" OIL BATH BEARING	01
00A	0501049009	7.2" X 1-1/4" OIL BATH BEARING	01
01	0502011765	HOUSING DM	01
01A	0502011766	HOUSING DM	01
02	0503010111	30210 ROLLER BEARING	02
03	0502040218	AXLE	01
04	0503030013	4.4" X 3.5" X 0.004" JOINT	02
05	0503030684	4.4" X 3.5" X 0.004" JOINT	01
06	0502020424	HOUSING CAP DM	01
07	0503010134	3/8" X 1" BOLT	04
08	0503030026	SEAL LP JB-253	02
09	0502010541	SEAL RETAINER	02
10	0502010073	OUTER FLANGE	01
11	0502010074	INNER FLANGE	01
12	0503010856	OIL PLUG	01

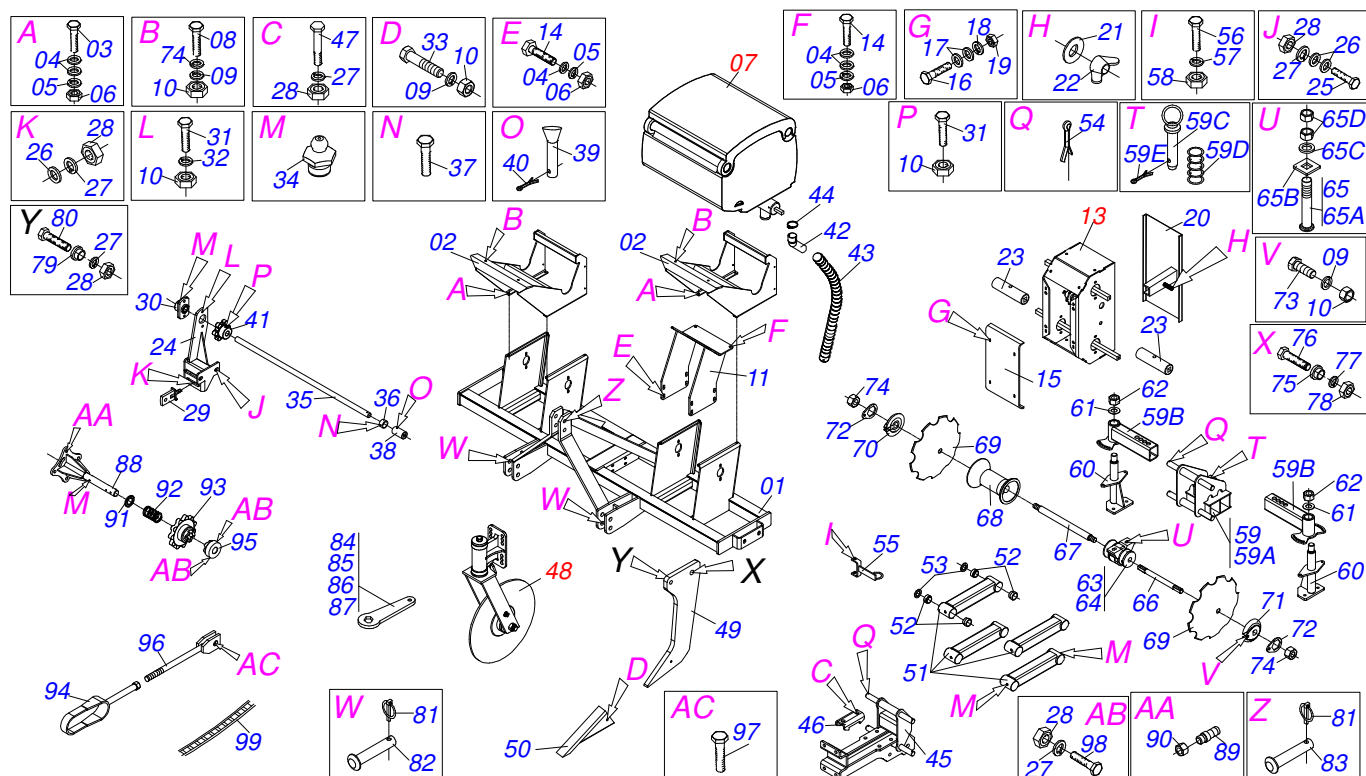


Item	Code	Description	QT
00	0501057078	BEAN FERTILIZER ASSY	01
01	0503061581	FERTILIZER BOX WITH COVER	01
02	0503010691	1/4" GREASE FITTING	04
03	0503032838	TUBE GUIDE	01
04	0541014215	BEARING BOLT	04
05	0511065979	SCREW THEAD	01
06	0551011421	SCREW THEAD BEARING	02
07	0541014214	SQUARE SHAFT	01
08	0503010571	1/4" X 1.1/2 COTTERPIN	02
09	0511067781	SOCKET COVER SUPPORT	02
10	0511067667	COVER SOCKET	02
11	0503010362	1/8" X 1.1/4" COTTERPIN	02
12	0501010637	FLAT WASHER	02
13	0503010834	1/2 X 1 BOLT	04
14	0511017302	FLAT WASHER	04
15	0503010019	1/2" SPRING WASHER	04



Item	Code	Description	QT
01	0502012370	WITH BLADE DISC SUPPORT	01
02	0511067105	BLADE DISC FORK	01
03	0541018869	FLAT WASHER	01
04	0541018868	FLAT WASHER	01
05	0501010098	HEX BOLT 3/4 UNC X 2 C S G.5 ZN	01
06	0503010023	SPRING WASHER	05
07	0503010004	1890 GREASE FITTING	01
08	0501010500	3/4"X3"BOLT	04
09	0503010014	3/4" NUT	04
10	0501056943	24" BLADE DISC	01
10A	0603030044	24" X 0.2" FLAT PLAIN DISC	01
10B	0502011478	DISC HUB	01
10C	0503011291	6209 BALL BEARING	02
10D	0503012106	00521-BR SEAL	02
10E	0521012661	BLADE DISC AXLE HUB	01
10F	0502011477	BLADE DISC HOUSIG CP	02
10G	0521011824	BLADE DISC FLANGE OUTER	01
10H	0503010134	3/8" X 1" BOLT	08
10I	0503011172	1/2" X 2-1/2" BOLT	08
10J	0503010060	1/2" NUT	16
11	0501069637	AXLE NUT LOCK	02
12	0503010962	5/8" X 1-1/4" BOLT	02
13	0503010027	SPRING WASHER	02
14	0521012664	FLAT WASHER	02
15	0501010087	1.1/4" NUT	02

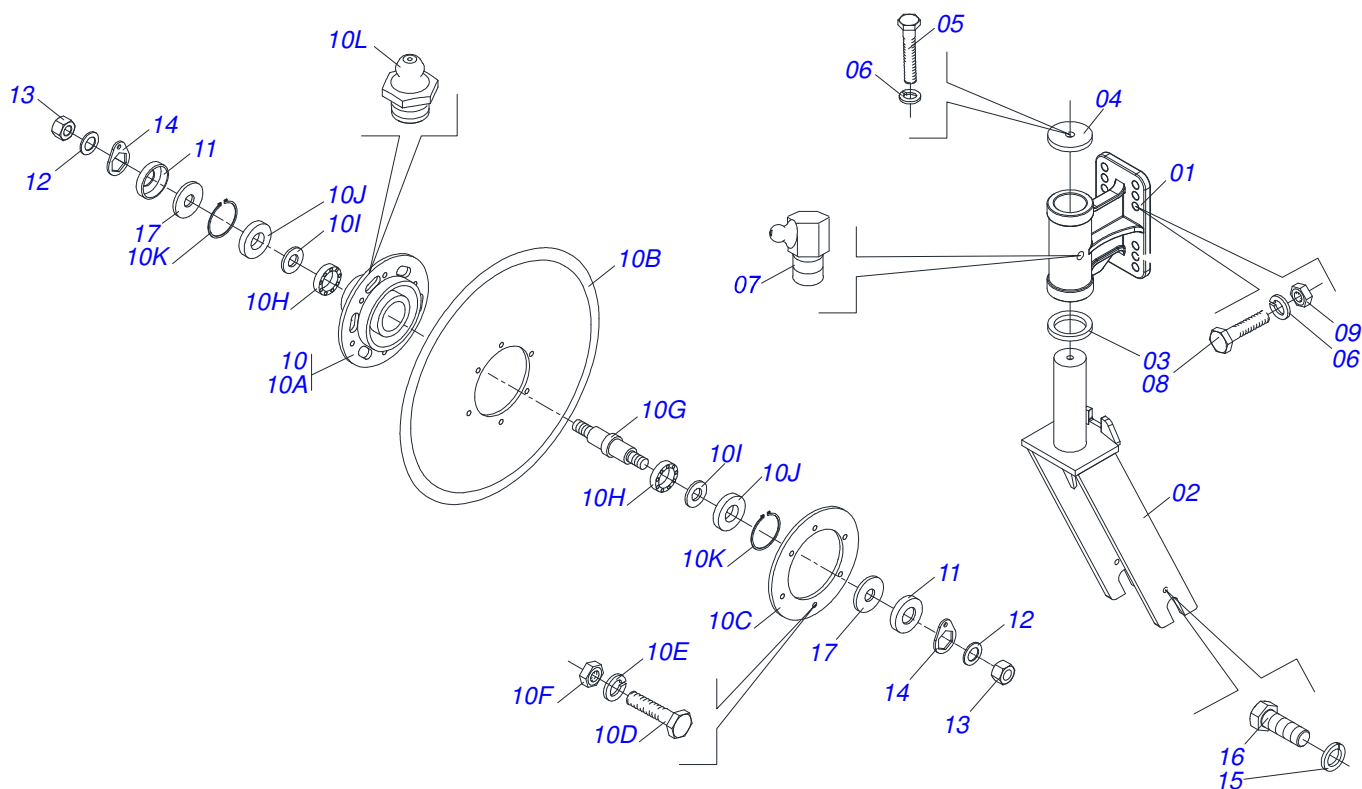




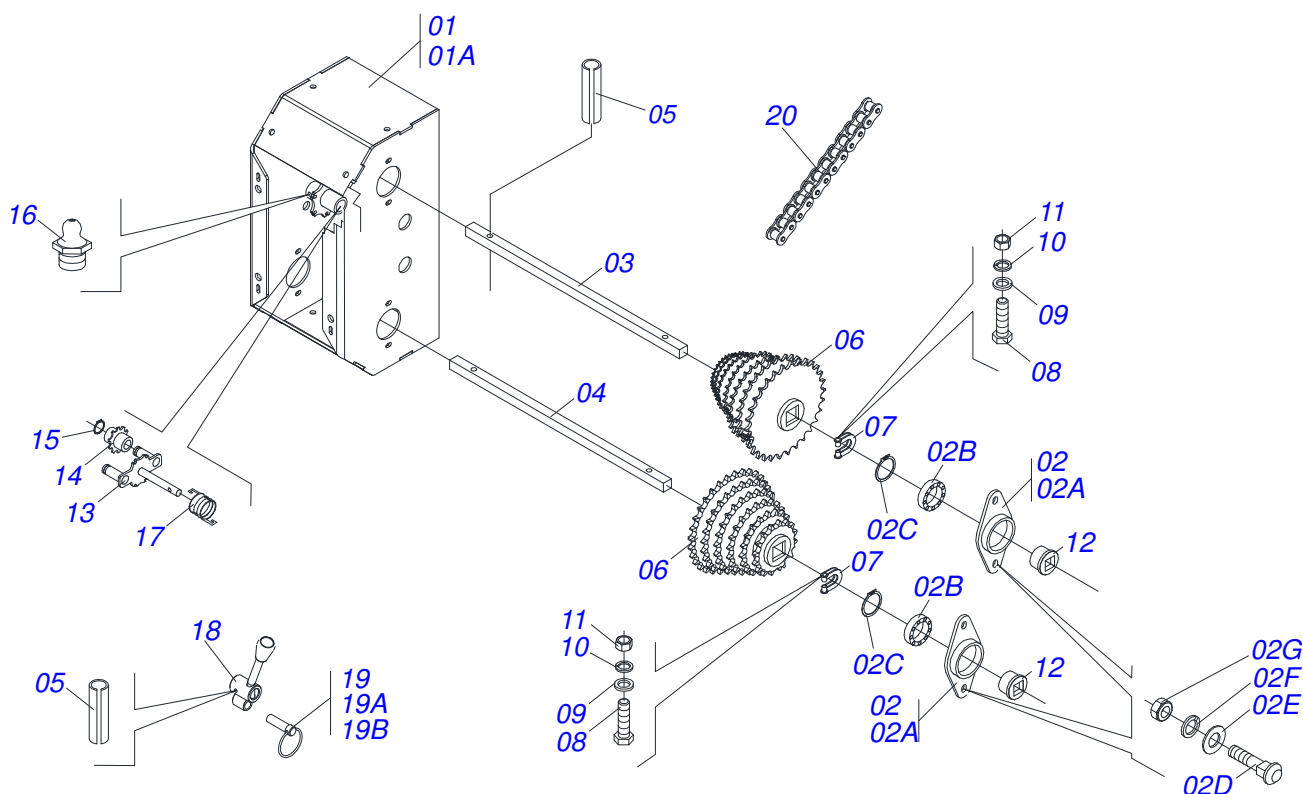
Item	Code	Description	QT
00	0511045055	FRAME ASSY	01
01	0511067623	FRAME	01
02	0511067625	FERTILIZER BEAM SUPPORT	02
03	0503010849	3/8" X 1-1/2" BOLT	08
04	0501010984	FLAT WASHER	36
05	0503010025	3/8 SPRING WASHER	20
06	0503010026	3/8" NUT	20
07	0501057078	BEAN FERTILIZER ASSY	02
08	0503010740	1/2" X 2" BOLT	04
09	0503010019	1/2" SPRING WASHER	14
10	0503010060	1/2" NUT	18
11	0511067107	SPEED SUPPORT VARIADOR	01
12	0503010751	C3/8" X 1.1/4" HEX BOLT G.5	08
13	0501056287	SPEED BOX VARIADOR	01
14	0503011087	3/8" X 1" BOLT	04
15	0541019052	SPEED COVER VARIADOR	01
16	0503010461	1/4" X 1" BOLT	04
17	0511017303	FLAT WASHER	08
18	0503010143	SPRING WASHER	04
19	0503010144	1/4" NUT	04
20	0511066626	SPEED COVER BOX	01
21	0521013303	WASHER	01
22	0503010499	5/16" UNC BUTTERFLY NUT	01
23	0502012007	SQUARE SLEEVE	02
24	0511067106	DRIVING AXLE SUPPORT	02
25	0501010098	HEX BOLT 3/4 UNC X 2 C S G.5 ZN	02
26	0501010322	FLAT WASHER	05
27	0503010023	SPRING WASHER	14
28	0503010014	3/4" NUT	15
29	0511067394	EAR DISARMENT	01
30	0501110014	AGRICULTURAL BEARING	01
31	0501010077	1/2" X 2" BOLT	04
32	0503010019	1/2" SPRING WASHER	02

Item	Code	Description	QT
33	0501010160	1/2" X 3" BOLT	02
34	0503010002	1800 GREASE FITTING	18
35	0541018896	DRIVER AXLE	01
36	0501010783	DRIVING AXLE LUCK	01
37	0503013662	1/2" X 1" BOLT	01
38	0511067108	SLEEVE AXLE DRIVING	01
39	0521010530	COUPLING SHAFT	01
40	0503010140	1/8" X 3/4" COTTERPIN	01
41	0502010156	6Z GEAR	01
42	0503031050	CURVED CONDUCTOR	04
43	0521015491	2" X 1200 HOSE	04
44	0503010246	CLAMP	04
45	0511067624	MOBILE FRAME	02
46	0551011189	FIXER MOBILE FRAME	04
47	0501011545	3/4" X 6-1/2" BOLT	08
48	0511045044	20" BLADE DISC ASSY	02
49	0511067627	SUBSOILER ROD	02
50	0501069659	SUBSOILER TIP	02
51	0511060990	ROCKING DRIVER	08
52	0521012122	DRIVER ROCKING SLEEVE SUPPORT	32
53	0551011190	FLAT WASHER	16
54	0503010523	1/4" X 2" COTTERPIN	16
55	0511067647	HOSE HOLDER	04
56	0503010295	5/16" X 5/8" BOLT	04
57	0503010179	SPRING WASHER	04
58	0503010337	5/16" NUT	04
59	0501057083	ROCKING HORROW FRAME	02
59A	0511067628	ROCKING HORROW	01
59B	0501069469	DISC REG DRIVER REG	02
59C	0501069472	DRIVER REG LOCK PIN	02
59D	0503030978	COMPRES SPRING	02
59E	0503010038	3/16 X 2 COTTERPIN	02
60	0511063098	DISC SUPPORT UPPER	04
61	0521012120	WASHER	04
62	0503010290	SELF ADJUSTING 1.1/2" UNF NUT	04
63	0501049008	7.2" X 1-1/4" OIL BATH BEARING	02
64	0501049009	7.2" X 1-1/4" OIL BATH BEARING	02
65	0501048963	5/8" X 2-1/2" BOLT ASSY	08
65A	0501014177	5/8" X 2-1/2" BOLT	01
65B	0501010947	5/8 NUT LOCK	01
65C	0501012140	FLAT WASHER	01
65D	0503010013	5/8" NUT	02
66	0521012160	1.1/4" X 290 AXLE	02
67	0501010752	1.1/4" X 500 AXLE	02
68	0502020052	181 SPACER	02
69	0602025011	0.7" X 0.2" NOTCHED DISC BLADE	10
70	0502010834	1-1/4" INNER AXLE WASHER	04
71	0502010835	1-1/4" EXTERNAL AXLE WASHER	04
72	0501010455	1.1/4" NUT LOCK	08
73	0501010161	1/2" X 1.1/4" BOLT	08
74	0501010087	1.1/4" NUT	08
75	0551011192	25,80 X 50,80 X 26 SLEEVE	02
76	0501010392	1" X 5" BOLT	02
77	0503010012	1" SPRING WASHER	02
78	0501010059	1.5/8 NUT	02
79	0551011191	19,84 X 38,10 X 26 SLEEVE	02
80	0503011328	3/4" X 4" BOLT	02
81	0503030085	LOCK PIN	03
82	0521010595	1.1" X 4.3" COUPLING SHAFT	02
83	0521010579	COUPLING SHAFT	01
84	0531014773	2.3 CABLE FLAT WRENCH HEX	01
85	0521012199	1.6" GANG BOLT WRENCH	01

Item	Code	Description	QT
86	0521012200	2" CABLE FLAT WRENCH	01
87	0521012126	1.3" CABLE FLAT WRENCH HEX	01
88	0501061186	MOTOR SUPPORT	01
89	0501010762	STUD	04
90	0501016992	3/4" CONIC NUT	04
91	0501010765	SPINDLE GUIDE	01
92	0503030086	COMPRESSION SPRING	01
93	0502011321	11Z GEAR WITH RIGHT DRAGGER	01
94	0501061189	COUPLING/UNCOUPLING ARM	01
95	0502011379	RH FOLLOWER	01
96	0501067747	ROD DRIVING	01
97	0503011082	C1/2" X 1.3/4" BOLT	02
98	0501010827	3/4" X 2-3/4" BOLT	01
99	0503010252	57 CHAIN X 63 LINK	01



Item	Code	Description	QT
00	0511045044	20" BLADE DISC ASSY	
01	0502012370	WITH BLADE DISC SUPPORT	01
02	0511067626	BLADE DISC FORK	01
03	0541018869	FLAT WASHER	01
04	0541018868	FLAT WASHER	01
05	0501010098	HEX BOLT 3/4 UNC X 2 C S G.5 ZN	01
06	0503010023	SPRING WASHER	05
07	0503010004	1890 GREASE FITTING	01
08	0503010901	3/4UNC 3.1/2 BOLT	04
09	0503010014	3/4" NUT	04
10	0501057077	20" BLADE DISC ASSY	01
10A	0502011562	DC PST ACT/ULTR BOX	01
10B	0603027851	20" X 0.2" FLAT PLAIN DISC	01
10C	0502020641	BLADE DISC FLANGE	01
10D	0503010358	5/16" X 5/8" BOLT	06
10E	0503011444	SPRING WASHER	06
10F	0503010337	5/16" NUT	06
10G	0551011186	BLADE DISC AXLE	01
10H	0503011784	6206 DDU C3 ROLLER BEARING	02
10I	0503030832	FLAT WASHER	02
10J	0503012417	SEAL	02
10K	0503011800	SEAL RING	02
10L	0503010691	1/4" GREASE FITTING	01
11	0551011188	BLADE DISC DUST CLOAK	02
12	0501011445	FLAT WASHER	02
13	0501010059	1.5/8 NUT	02
14	0511067629	NUT LOCK	02
15	0503010019	1/2" SPRING WASHER	02
16	0501010155	1/2" X 1" BOLT	02
17	0551011187	AXLE WASHER BLADE DISC	02



Item	Code	Description	QT
01	0501056287	SPEED BOX VARIADOR	01
01A	0511066625	SPEED BOX VARIADOR	01
02	0501053361	SPEED DOUB BEARING VARIADOR	04
02A	0502011987	DOUBLE HOUSING BEARING	01
02B	0503011410	ROLLER BEARING	02
02C	0503011105	SEAL RING	01
02D	0503011953	5/16" X 1" BOLT	02
02E	0501010694	FLAT WASHER	02
02F	0503010179	SPRING WASHER	02
02G	0503010337	5/16" NUT	02
03	0521013283	SPEED AXLE TRANSMISSION	01
04	0541016956	SPEED AXLE TRANSMISSION	01
05	0503010292	0.2" X 1.6" SPRING PIN	05
06	0501069700	FERTILIZER GEAR ASSY	02
07	0521010691	AXLE FASTENER	04
08	0503010373	1/4" X 2" BOLT	04
09	0511017303	FLAT WASHER	04
10	0503010143	SPRING WASHER	04
11	0503010144	1/4" NUT	04
12	0503031527	AGRICULTURAL BEARING	04
13	0511060393	CHAIN TENSIONER ASSY	01
14	0503031805	11Z 1/2" GEAR	02
15	0503010302	501019 SEAL RING	02
16	0503010002	1800 GREASE FITTING	01
17	0503031366	RH TORSION SPRING	01
18	0502011758	REAR TENSIONER LEVER	01
19	0501048790	AXLE WITH LINK ASSY	01
19A	0521012476	GEAR BOX LEVER AXLE	01
19B	0503031369	LINK	01
20	0503012143	78 CHAIN X 40-1 LINK + REDUCTION	01

## This image shows a single page from a notebook or ledger. The page is white with rounded corners and features horizontal ruling lines spaced evenly down its length. There are no margins, text, or other markings on the page.





**MARCHESAN IMPLEMENTOS E MÁQUINAS AGRÍCOLAS TATU S.A.**

AV. Marchesan, 1979 - Post office box, 131 - CEP 15994-900 - Matão - SP - Brazil

Phone +55 16.3382-8282

(FAX Parts) + 55 16.3382. 8297 - (Export) + 55 16.3382.1003

e.mail: [tatu@marchesan.com.br](mailto:tatu@marchesan.com.br) [www.marchesan.com.br](http://www.marchesan.com.br)

**Technical Publications: Elaboration**

ALESSANDRA PATRICIA KAWAHARA CARRILI

*Contact Catálogo:*

*E-mail = [jgaspari@marchesan.com.br](mailto:jgaspari@marchesan.com.br)*

**ORIGINAL PARTS  
TATU**

