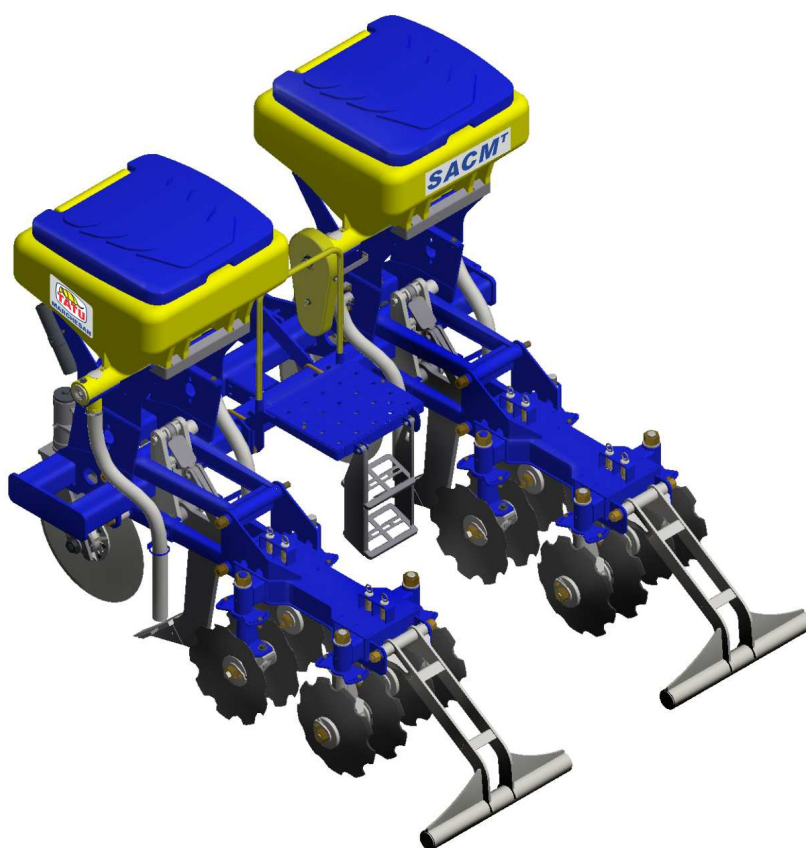


PARTS CATALOG

IMPLEMENTS FOR SUGAR CANE

SACMT 02-L

Code: 0501091297



Series: S-0306

Rev.: 00

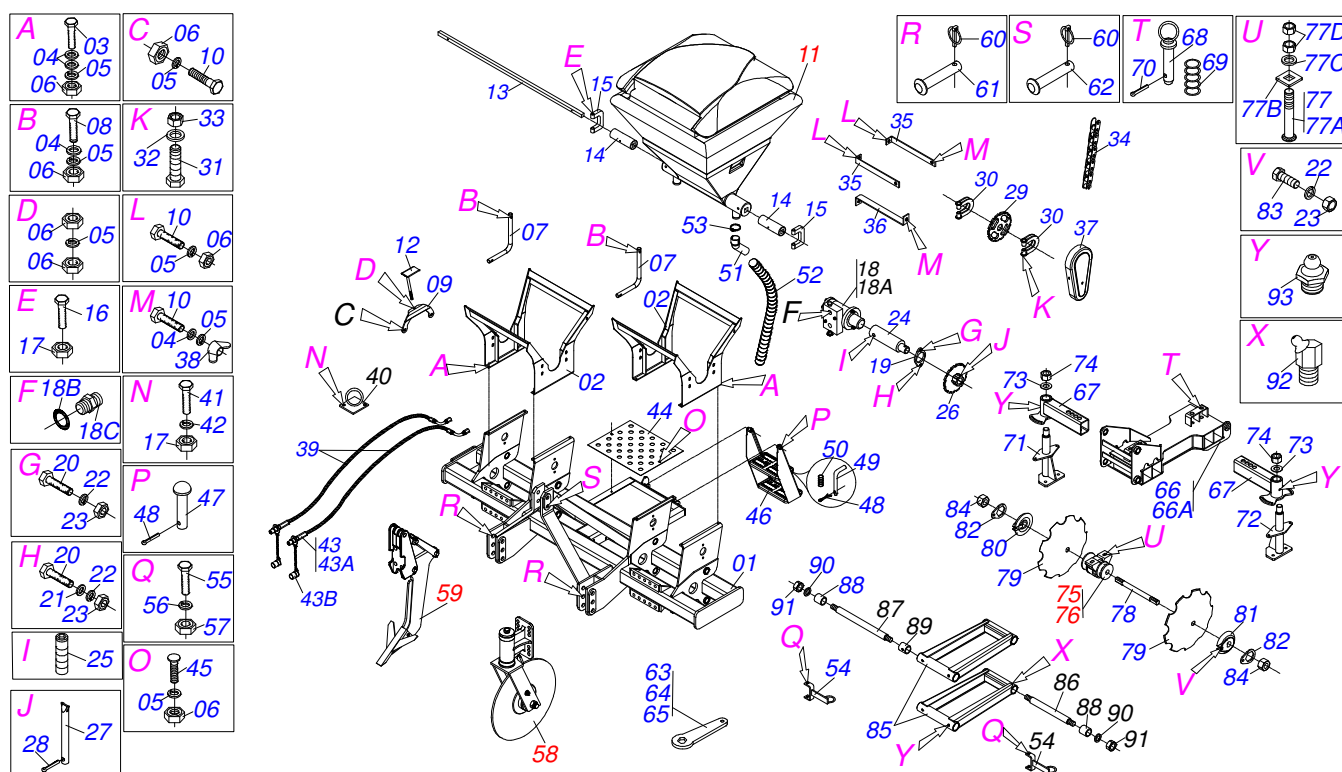
Date Rev.: MARÇO/2006

ORIGINAL PARTS
TATU



INDEX

0909091455	FRAME SACMT CTP 2L	1
0909091443	FRAME SACMT MEC CTP 2L	2
0501054884	SHANKS SYSTEM ASSY SACM3	3
0501056287	SPEED BOX VARIADOR	4
0501054945	REAR LEVELING	5
0511044355	24" BLADE DISC ASSY	6
0909091478	ROW MARK ASSY	7
0511040203	1.5" X 2.5" X 19" X 9" HYDRAULIC CYLINDER	8
0909091458	DM OL 151 1.1/4" AGRICULTURAL BEARING	9
0909091477	BEAN FERTILIZER ASSY (REPLACEMENT)	10
0909090433	OIL BATH BEARING	11



Item	Code	Description	QT
01	0511067104	FRAME	01
02	0511067109	SILO SUPPORT	02
03	0503010849	3/8" X 1-1/2" BOLT	08
04	0501010984	FLAT WASHER	23
05	0503010025	3/8 SPRING WASHER	29
06	0503010026	3/8" NUT	30
07	0541019594	SILO SUPPORT LUG	02
08	0501010096	3/8" X 2" BOLT	04
09	0511067206	FASTENER SUPPORT	04
10	0503011087	3/8" X 1" BOLT	11
11	0501056813	BEAN FERTILIZER ASSY ATÉ 09/2006	02
12	0511067314	FASTENER SINGLE BOX FERTILIZER	04
13	0511011539	3/4" SQUARE SHAFT	01
14	0502012007	SQUARE SLEEVE	02
15	0521013222	U PULLER	02
16	0503010397	5/16" X 1-3/4" BOLT	02
17	0503010337	5/16" NUT	04
18	0501053421	VALVE MOTOR HYDRAULIC ASSY	01
18A	0503012829	VALVE HYDRAULIC MOTOR ASSY	01
18B	0503010045	2-116 N 3006-9B O'RING	02
18C	0501010590	7/8" REDUCTION NIPPLE	02
19	0541019115	HYDRAULIC MOTOR FLANGE	01
20	0503011172	1/2" X 2-1/2" BOLT	02
21	0511017302	FLAT WASHER	01
22	0503010019	1/2" SPRING WASHER	18
23	0503010060	1/2" NUT	18
24	0511067266	HIDRAULIC MOTOR AXLE	01
25	0503011136	1/2" X 1/2" CSI BOLT	01
26	0502010411	10Z GEAR	01
27	0521010530	COUPLING SHAFT	01
28	0503010140	1/8" X 3/4" COTTERPIN	01
29	0502011318	10Z GEAR	01
30	0521010691	AXLE FASTENER	02



SACMT 02-L
FRAME SACMT CTP 2L

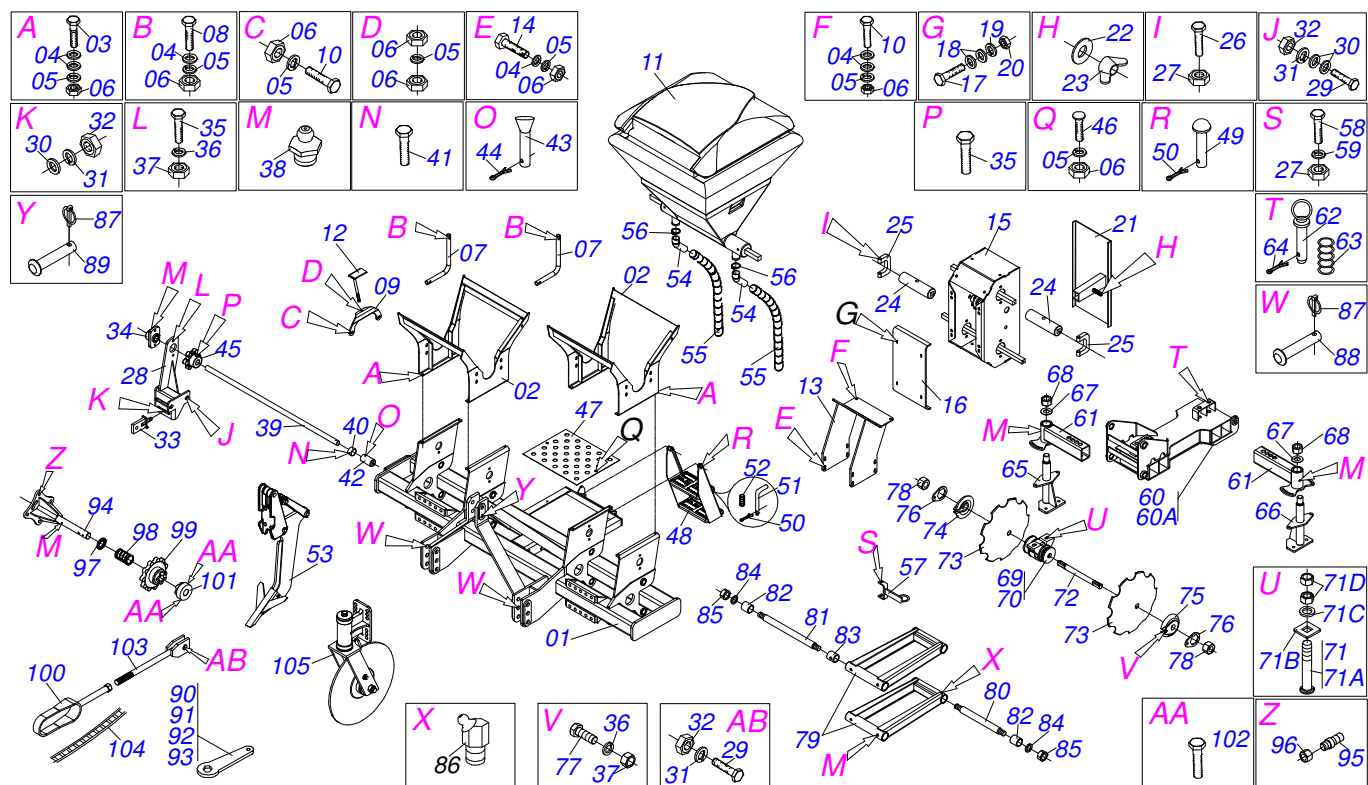
Item	Code	Description	QT
31	0503010373	1/4" X 2" BOLT	02
32	0511017303	FLAT WASHER	02
33	0503010144	1/4" NUT	02
34	0503013996	2050 CHAIN X 28 LINK + REDUCTION	01
35	0541019406	CHAIN CAP UPPER SUPPORT	02
36	0541019404	CHAIN CAP LOWER SUPPORT	01
37	0541019618	CHAIN CAP	01
38	0503010209	3/8" UNC BUTTERFLY NUT	03
39	0501080097	1/2" X 98" TC-TM HOSE ASSY	02
40	0511062800	HOSE ASSY FIZER	01
41	0503010371	5/16" X 1" BOLT	02
42	0503010179	SPRING WASHER	02
43	0501053834	MALE QUICK COUPLING AGRICULTURAL WITH	02
43A	0503011627	QUICK CONNECTION (MALE) AGR 1/2 NPT	01
43B	0503011882	QUICK CONNECTION COVER	01
44	0541018908	PLATFORM BODY	01
45	0501011643	3/8 X 1"BOLT	02
46	0501069281	RIGHT LADDER	01
47	0521010542	COUPLING SHAFT	02
48	0503010257	1/8" X 1" COTTERPIN	03
49	0521011249	LADDER LOCK PIN	01
50	0503030190	0.5" X 1.6" X 0.05" SPRING	01
51	0503031050	CURVED CONDUCTOR	04
52	0501010769	2" X 31.5" HOSE ASSY	04
53	0503010246	CLAMP	04
54	0511067339	HOSE SUPPORT	04
55	0503013096	5/16" X 4" BOLT	04
56	0503010179	SPRING WASHER	04
57	0503010337	5/16" NUT	04
58	0511044355	24" BLADE DISC ASSY	02
59	0501054884	SHANKS SYSTEM ASSY SACM3	02
60	0503030085	LOCK PIN	03
61	0521012124	COUPLING SHAFT	02
62	0521012533	COUPLING SHAFT	01
63	0531014773	2.3 CABLE FLAT WRENCH HEX	01
64	0521012199	1.6" GANG BOLT WRENCH	01
65	0521012200	2" CABLE FLAT WRENCH	01
66	0501055628	FRAME HORROW TANDEM	02
66A	0511067115	ROCKING HORROW	01
67	0501069469	DISC REG DRIVER REG	04
68	0501069472	DRIVER REG LOCK PIN	04
69	0503030978	COMPRES SPRING	04
70	0503010038	3/16 X 2 COTTERPIN	04
71	0511063098	DISC SUPPORT UPPER	04
72	0511063099	DISC REG SUPPORT LOWER	04
73	0521012120	WASHER	08
74	0503010290	SELF ADJUSTING 1.1/2" UNF NUT	08
75	0501049008	7.2" X 1-1/4" OIL BATH BEARING	04
76	0501049009	7.2" X 1-1/4" OIL BATH BEARING	04
77	0501048963	5/8" X 2-1/2" BOLT ASSY	16
77A	0501014177	5/8" X 2-1/2" BOLT	01
77B	0501010947	5/8 NUT LOCK	01
77C	0501012140	FLAT WASHER	01
77D	0503010013	5/8" NUT	02
78	0521012160	1.1/4" X 290 AXLE	08
79	0602025011	0.7" X 0.2" NOTCHED DISC BLADE	16
80	0502010834	1-1/4" INNER AXLE WASHER	08
81	0502010835	1-1/4" EXTERNAL AXLE WASHER	08
82	0501010455	1.1/4" NUT LOCK	16
83	0501010161	1/2" X 1.1/4" BOLT	16
84	0501010087	1.1/4" NUT	16
85	0511064991	ROCKING DRIVER	04



SACMT 02-L
FRAME SACMT CTP 2L

Page 1
0909091455

Item	Code	Description	QT
86	0521012121	AXLE SMALEER PIVOT	04
87	0541010320	DRIVER ROCKING AXLE LARGER PIVOT	04
88	0521012122	DRIVER ROCKING SLEEVE SUPPORT	16
89	0541010319	SLEEVE	08
90	0521012087	FLAT WASHER	16
91	0503010063	1" SELF-ALIGNING NUT	16
92	0503010003	1845 GREASE FITTING	08
93	0503010002	1800 GREASE FITTING	16



Item	Code	Description	QT
001	0511067104	FRAME	01
002	0511067109	SILO SUPPORT	02
003	0503010849	3/8" X 1-1/2" BOLT	08
004	0501010984	FLAT WASHER	44
005	0503010025	3/8 SPRING WASHER	36
006	0503010026	3/8" NUT	40
007	0541019594	SILO SUPPORT LUG	02
008	0501010096	3/8" X 2" BOLT	04
009	0511067206	FASTENER SUPPORT	04
010	0503011087	3/8" X 1" BOLT	10
011	0501056813	BEAN FERTILIZER ASSY ATÉ 09/2006	02
012	0511067314	FASTENER SINGLE BOX FERTILIZER	04
013	0511067107	SPEED SUPPORT VARIADOR	01
014	0503010751	C3/8" X 1.1/4" HEX BOLT G.5	08
015	0501056287	SPEED BOX VARIADOR	01
016	0541019052	SPEED COVER VARIADOR	01
017	0503010461	1/4" X 1" BOLT	04
018	0511017303	FLAT WASHER	08
019	0503010143	SPRING WASHER	04
020	0503010144	1/4" NUT	04
021	0511066626	SPEED COVER BOX	01
022	0521013303	WASHER	01
023	0503010499	5/16" UNC BUTTERFLY NUT	01
024	0502012007	SQUARE SLEEVE	02
025	0521013222	U PULLER	02
026	0503010397	5/16" X 1-3/4" BOLT	02
027	0503010337	5/16" NUT	06
028	0511067106	DRIVING AXLE SUPPORT	01
029	0501010125	3/4" X 2-1/2" BOLT	03
030	0501010322	FLAT WASHER	05
031	0503010023	SPRING WASHER	04
032	0503010014	3/4" NUT	04
033	0511067394	EAR DISARMENT	01



FRAME SACMT MEC CTP 2L

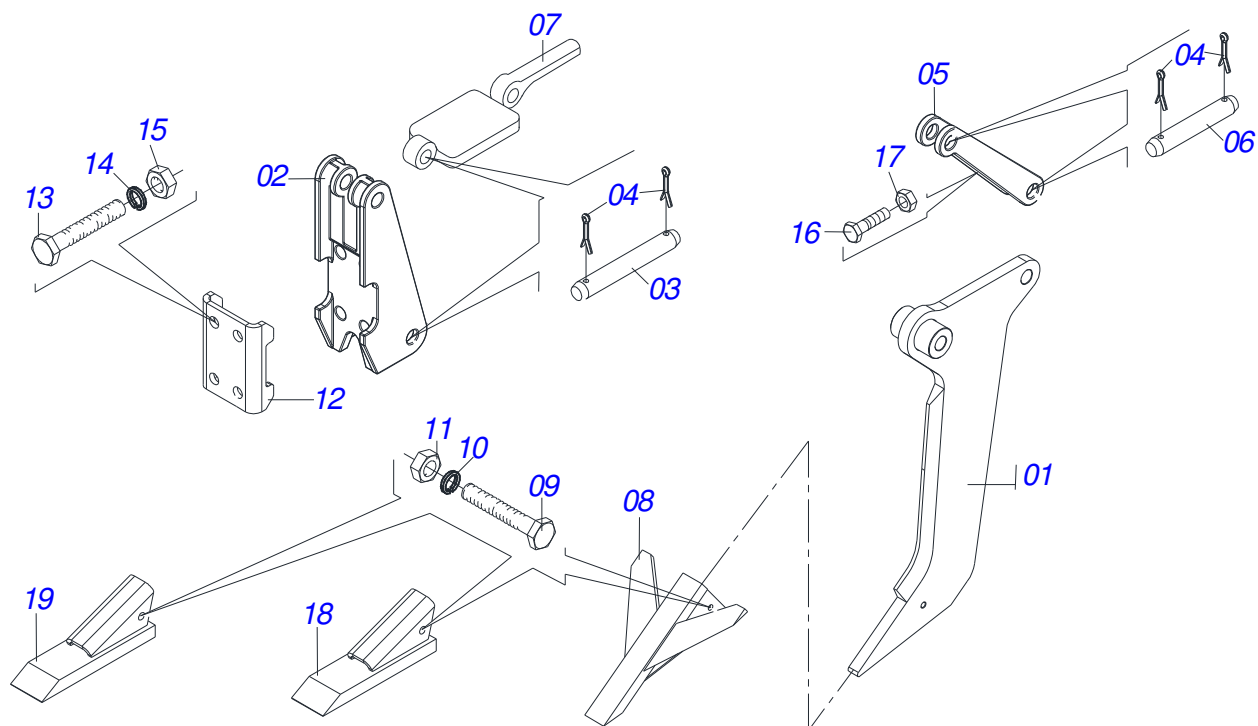
0909091443

Item	Code	Description	QT
034	0501110014	AGRICULTURAL BEARING	01
035	0501010077	1/2" X 2" BOLT	04
036	0503010019	1/2" SPRING WASHER	18
037	0503010060	1/2" NUT	18
038	0503010002	1800 GREASE FITTING	18
039	0541018896	DRIVER AXLE	01
040	0501010783	DRIVING AXLE LUCK	01
041	0503010834	1/2 X 1 BOLT	01
042	0511067108	SLEEVE AXLE DRIVING	01
043	0521010530	COUPLING SHAFT	01
044	0503010140	1/8" X 3/4" COTTERPIN	01
045	0502010156	6Z GEAR	01
046	0501011643	3/8 X 1"BOLT	02
047	0541018908	PLATFORM BODY	01
048	0501069281	RIGHT LADDER	01
049	0521010542	COUPLING SHAFT	02
050	0503010257	1/8" X 1" COTTERPIN	02
051	0521011249	LADDER LOCK PIN	01
052	0503030190	0.5" X 1.6" X 0.05" SPRING	01
053	0501054884	SHANKS SYSTEM ASSY SACM3	02
054	0503030150	BEND SOCKET	04
055	0501010769	2" X 31.5" HOSE ASSY	04
056	0503010246	CLAMP	04
057	0511067339	HOSE SUPPORT	04
058	0503013096	5/16" X 4" BOLT	04
059	0503010179	SPRING WASHER	04
060	0501055628	FRAME HORROW TANDEM	02
061	0501069469	DISC REG DRIVER REG	04
062	0501069472	DRIVER REG LOCK PIN	04
063	0503030978	COMPRES SPRING	04
064	0503010038	3/16 X 2 COTTERPIN	04
065	0511063098	DISC SUPPORT UPPER	04
066	0511063099	DISC REG SUPPORT LOWER	04
067	0521012120	WASHER	08
068	0503010290	SELF ADJUSTING 1.1/2" UNF NUT	08
069	0501049008	7.2" X 1-1/4" OIL BATH BEARING	04
070	0501049009	7.2" X 1-1/4" OIL BATH BEARING	04
071	0501048963	5/8" X 2-1/2" BOLT ASSY	16
071A	0501014177	5/8" X 2-1/2" BOLT	01
071B	0501010947	5/8 NUT LOCK	01
071C	0501012140	FLAT WASHER	01
071D	0503010013	5/8" NUT	02
072	0521012160	1.1/4" X 290 AXLE	08
073	0602025011	0.7" X 0.2" NOTCHED DISC BLADE	16
074	0502010834	1-1/4" INNER AXLE WASHER	08
075	0502010835	1-1/4" EXTERNAL AXLE WASHER	08
076	0501010455	1.1/4" NUT LOCK	16
077	0501010161	1/2" X 1.1/4" BOLT	16
078	0501010087	1.1/4" NUT	16
079	0511064991	ROCKING DRIVER	04
080	0521012121	AXLE SMALEER PIVOT	04
081	0541010320	DRIVER ROCKING AXLE LARGER PIVOT	04
082	0521012122	DRIVER ROCKING SLEEVE SUPPORT	16
083	0541010319	SLEEVE	08
084	0521012087	FLAT WASHER	16
085	0503010063	1" SELF-ALIGNING NUT	16
086	0503010003	1845 GREASE FITTING	08
087	0503030085	LOCK PIN	03
088	0521012124	COUPLING SHAFT	02
089	0521012533	COUPLING SHAFT	01
090	0521012126	1.3" CABLE FLAT WRENCH HEX	01
091	0531014773	2.3 CABLE FLAT WRENCH HEX	01

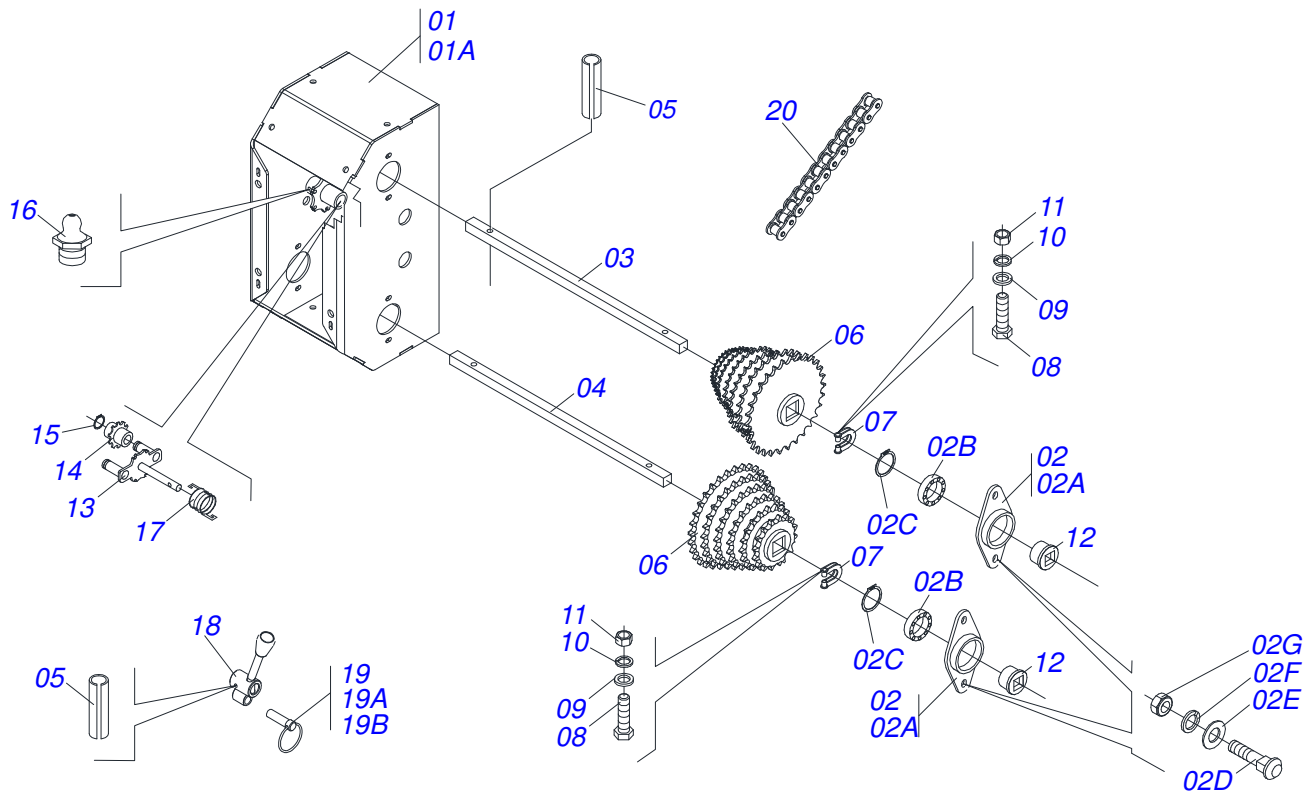


SACMT 02-L
FRAME SACMT MEC CTP 2L

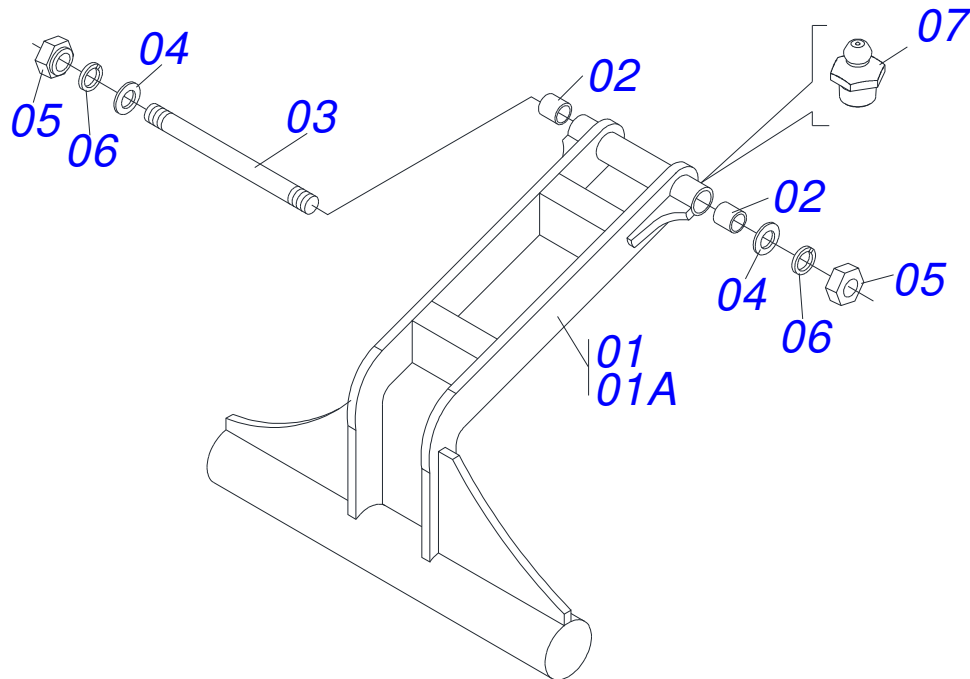
Item	Code	Description	QT
092	0521012199	1.6" GANG BOLT WRENCH	01
093	0521012200	2" CABLE FLAT WRENCH	01
094	0501061186	MOTOR SUPPORT	01
095	0501010762	STUD	04
096	0501016992	3/4" CONIC NUT	04
097	0501010765	SPINDLE GUIDE	01
098	0503030086	COMPRESSION SPRING	01
099	0502010121	11Z GEAR	01
100	0501061189	COUPLING/UNCOUPLING ARM	01
101	0502011379	RH FOLLOWER	01
102	0503010734	1/2" X 2-1/2" BOLT	02
103	0501067747	ROD DRIVING	01
104	0503010252	57 CHAIN X 63 LINK	01
105	0511044355	24" BLADE DISC ASSY	02



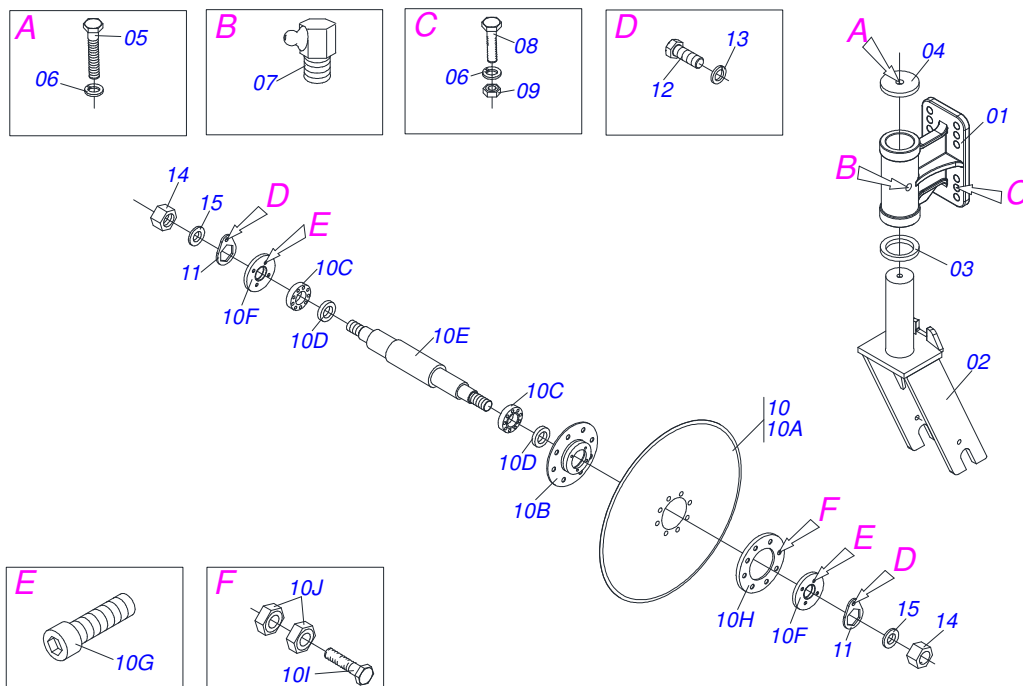
Item	Code	Description	QT
01	0511064994	FURROWER ARM	01
02	0502011165	REAR FIXER	01
03	0511015688	1.1" X 7.1" COUPLING SHAFT	02
04	0503010571	1/4" X 1.1/2" COTTERPIN	08
05	0502011164	SUPPORT SPRING	01
06	0511015689	1.1" X 3.5" COUPLING SHAFT	02
07	0521011631	AUTOMATIC RESET	01
08	0511067838	POINT SUBSOILER	01
09	0503011236	3/8" X 2" BOLT	01
10	0503011443	SPRING WASHER	01
11	0503010026	3/8" NUT	01
12	0502011166	FRONT FIXER	01
13	0511019527	1" X 8" BOLT	04
14	0503011438	SPRING WASHER	04
15	0503010340	1" NUT	04
16	0503011195	7/16" X 1.3/4" BOLT	01
17	0503010244	7/16" NUT	01
18	0511067842	SUBSOILER TIP	02
19	0511067841	POINT SUBSOILER	02



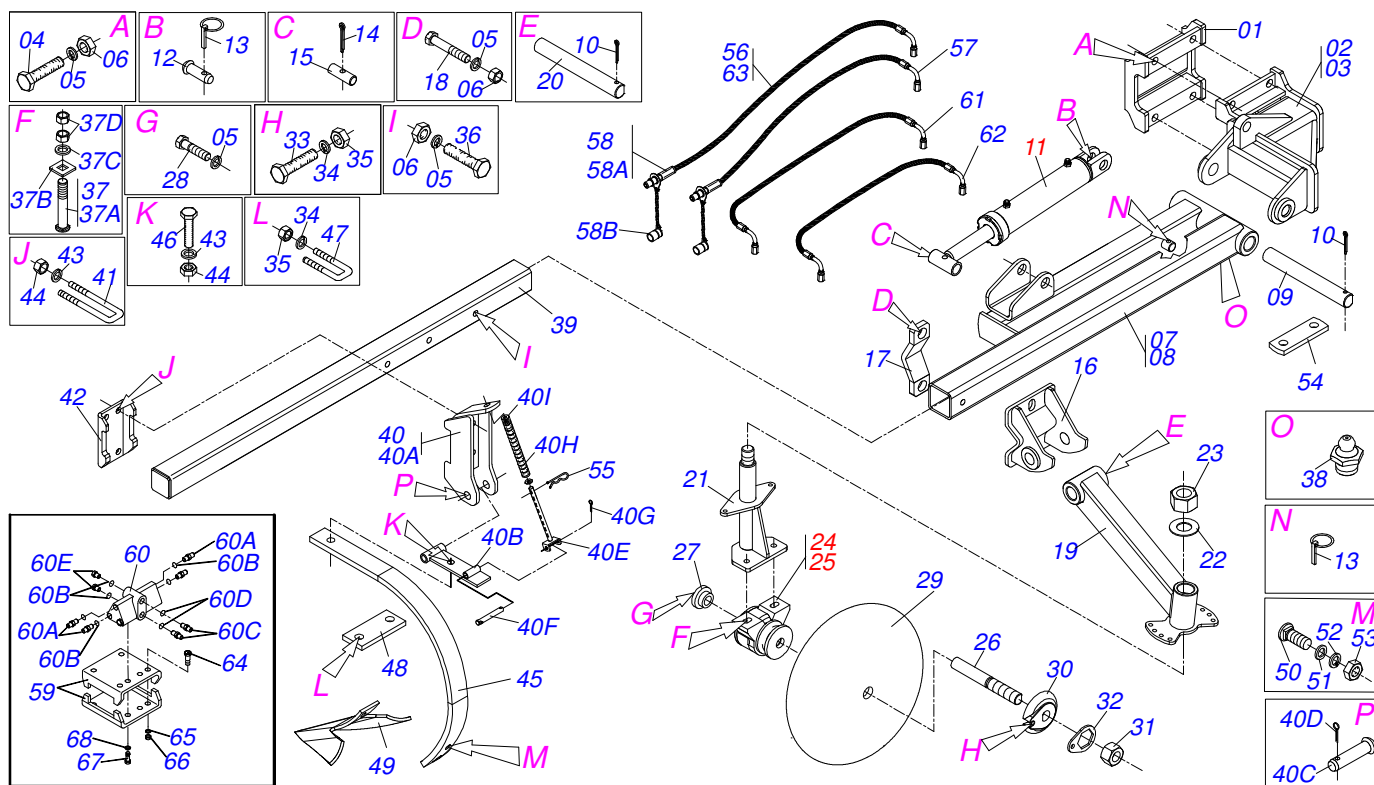
Item	Code	Description	QT
01	0501056287	SPEED BOX VARIADOR	01
01A	0511066625	SPEED BOX VARIADOR	01
02	0501053361	SPEED DOUB BEARING VARIADOR	04
02A	0502011987	DOUBLE HOUSING BEARING	01
02B	0503011410	ROLLER BEARING	02
02C	0503011105	SEAL RING	01
02D	0503011953	5/16" X 1" BOLT	02
02E	0501010694	FLAT WASHER	02
02F	0503010179	SPRING WASHER	02
02G	0503010337	5/16" NUT	02
03	0521013283	SPEED AXLE TRANSMISSION	01
04	0541016956	SPEED AXLE TRANSMISSION	01
05	0503010292	0.2" X 1.6" SPRING PIN	05
06	0501069700	FERTILIZER GEAR ASSY	02
07	0521010691	AXLE FASTENER	04
08	0503010373	1/4" X 2" BOLT	04
09	0511017303	FLAT WASHER	04
10	0503010143	SPRING WASHER	04
11	0503010144	1/4" NUT	04
12	0503031527	AGRICULTURAL BEARING	04
13	0511060393	CHAIN TENSIONER ASSY	01
14	0503031805	11Z 1/2" GEAR	02
15	0503010302	501019 SEAL RING	02
16	0503010002	1800 GREASE FITTING	01
17	0503031366	RH TORSION SPRING	01
18	0502011758	REAR TENSIONER LEVER	01
19	0501048790	AXLE WITH LINK ASSY	01
19A	0521012476	GEAR BOX LEVER AXLE	01
19B	0503031369	LINK	01
20	0503012143	78 CHAIN X 40-1 LINK + REDUCTION	01



Item	Code	Description	QT
01	0501054945	REAR LEVELING	01
01A	0511064998	REAR LEVELING	01
02	0531010280	SLEEVE ARM REAR LEVELING	02
03	0531010281	REAR LEVELING AXLE ARM	01
04	0521012087	FLAT WASHER	02
05	0503010063	1" SELF-ALIGNING NUT	02
06	0503010012	1" SPRING WASHER	02
07	0503010002	1800 GREASE FITTING	02



Item	Code	Description	QT
01	0502012370	WITH BLADE DISC SUPPORT	01
02	0511067105	BLADE DISC FORK	01
03	0541018869	FLAT WASHER	01
04	0541018868	FLAT WASHER	01
05	0501010098	HEX BOLT 3/4 UNC X 2 C S G.5 ZN	01
06	0503010023	SPRING WASHER	05
07	0503010004	1890 GREASE FITTING	01
08	0501010500	3/4"X3"BOLT	04
09	0503010014	3/4" NUT	04
10	0501056943	24" BLADE DISC	01
10A	0603030044	24" X 0.2" FLAT PLAIN DISC	01
10B	0502011478	DISC HUB	01
10C	0503011291	6209 BALL BEARING	02
10D	0503012106	00521-BR SEAL	02
10E	0521012661	BLADE DISC AXLE HUB	01
10F	0502011477	BLADE DISC HOUSIG CP	02
10G	0521011824	BLADE DISC FLANGE OUTER	01
10H	0503010134	3/8" X 1" BOLT	08
10I	0503011172	1/2" X 2-1/2" BOLT	08
10J	0503010060	1/2" NUT	16
11	0501069637	AXLE NUT LOCK	02
12	0503010962	5/8" X 1-1/4" BOLT	02
13	0503010027	SPRING WASHER	02
14	0521012664	FLAT WASHER	02
15	0501010087	1.1/4" NUT	02

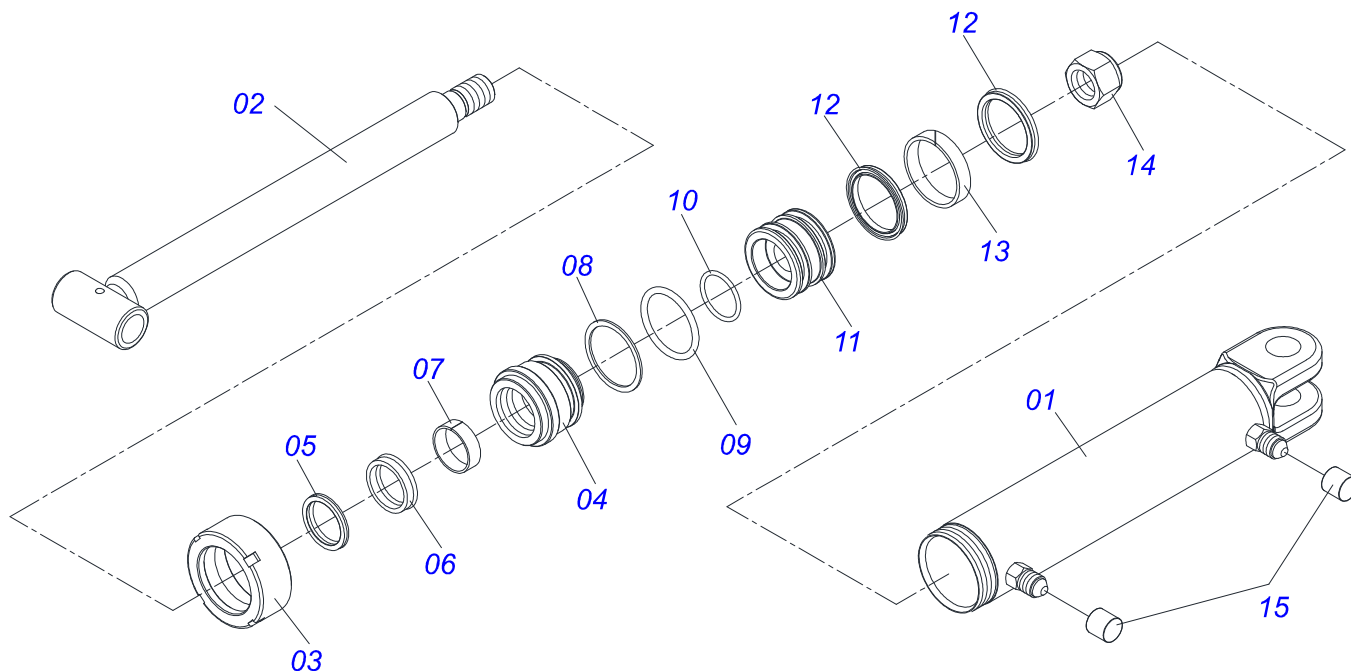


Item	Code	Description	CV	SV
00	0501056786	ROW MARK ASSY	01	01
00A	0501056986	ROW MARK ASSY	01	01
01	0511067457	ROW MARKER FIXER	02	02
02	0511067458	SUPPORT RIGHT BOLLARD	01	01
03	0511067459	LEFT SUPPORT ROW MARKER	01	01
04	0503011084	3/4" X 5" BOLT	08	08
05	0503010023	SPRING WASHER	14	14
06	0503010014	3/4" NUT	12	12
07	0511067460	RIGHT ARM ROW MARKER	01	01
08	0511067461	LH ARM ROW MARKER	01	01
09	0521012187	WHEEL AXLE ARM	02	02
10	0503010523	1/4" X 2" COTTERPIN	04	04
11	0511040203	1.5" X 2.5" X 19" X 9" HYDRAULIC CYLINDER	02	02
12	0521010577	0.9" X 4.1" COUPLING SHAFT	02	02
13	0503030085	LOCK PIN	03	03
14	0503010571	1/4" X 1.1/2" COTTERPIN	04	04
15	0511015779	1" X 4.2" AXLE	02	02
16	0511067462	ARM SUPPORT OSCILLATING	02	02
17	0502010175	HITCH CLAMP	02	02
18	0503010797	3/4" X 4" BOLT	04	04
19	0511067463	OSCILLATING ARM ROW MARKER	02	02
20	0551010402	34,93 X 160,50/161 AXLE	02	02
21	0511063099	DISC REG SUPPORT LOWER	02	02
22	0521012120	WASHER	02	02
23	0503010290	SELF ADJUSTING 1.1/2" UNF NUT	02	02
24	0501049010	BEARING	01	01
25	0501049011	BEARING GUARD	01	01
26	0521015310	1.1/4 UNC X 206 AXLE	02	02
27	0521015311	WASHER	02	02
28	0501010098	HEX BOLT 3/4 UNC X 2 C S G.5 ZN	02	02
29	0601025002	18" X 0.1" PLAIN DISC BLADE	02	02
30	0502010835	1-1/4" EXTERNAL AXLE WASHER	02	02
31	0501010087	1.1/4" NUT	02	02

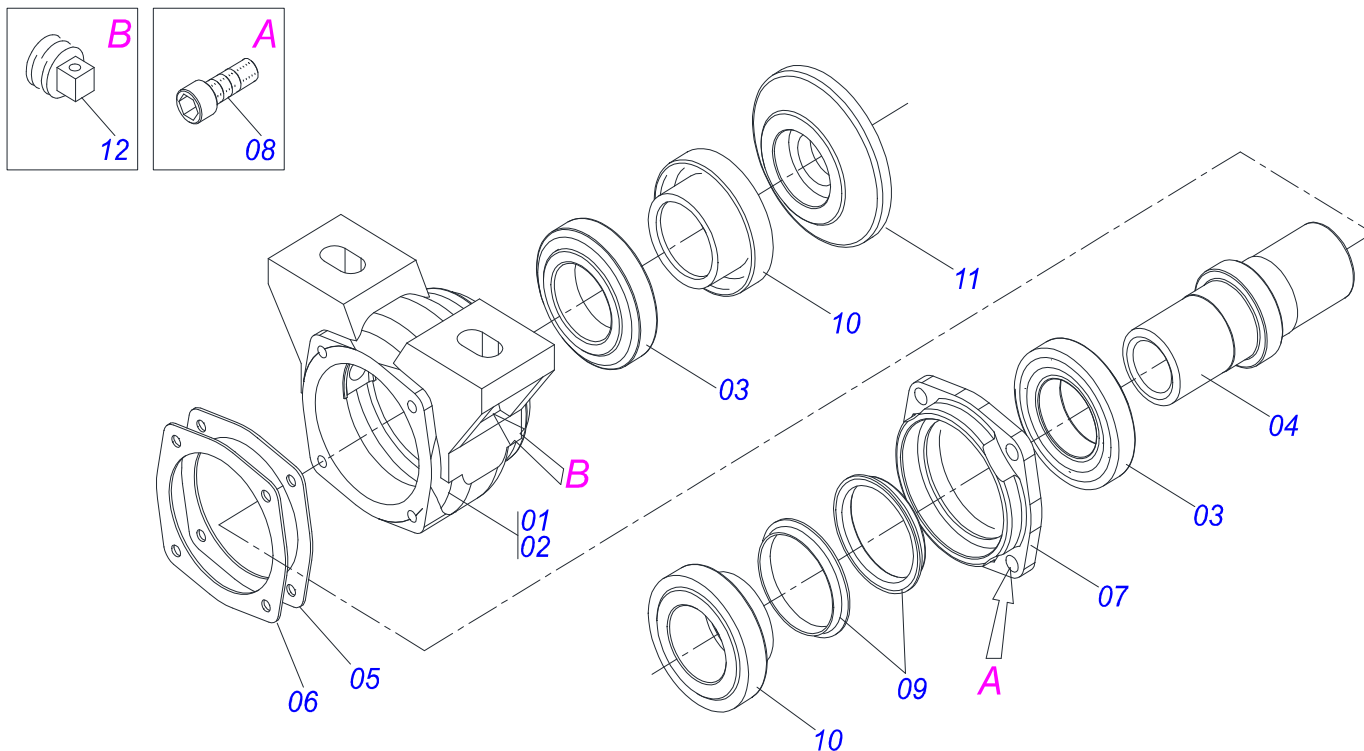


SACMT 02-L
ROW MARK ASSY

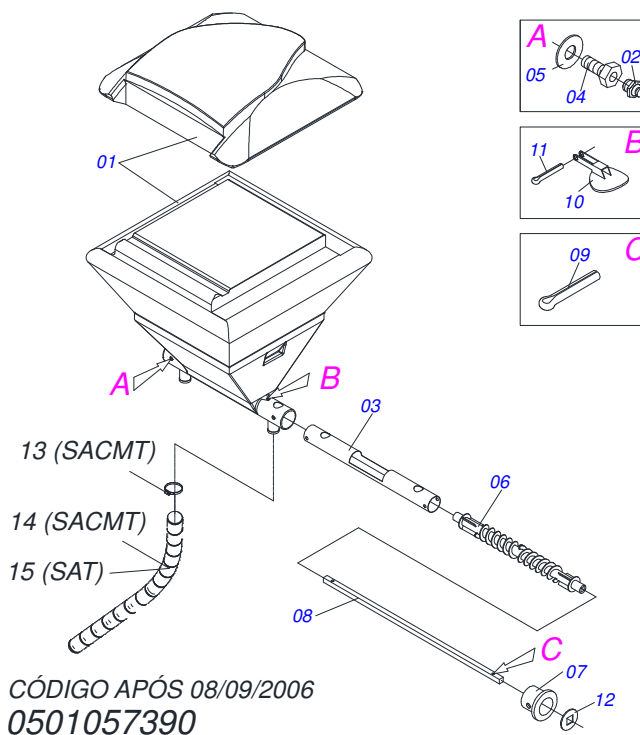
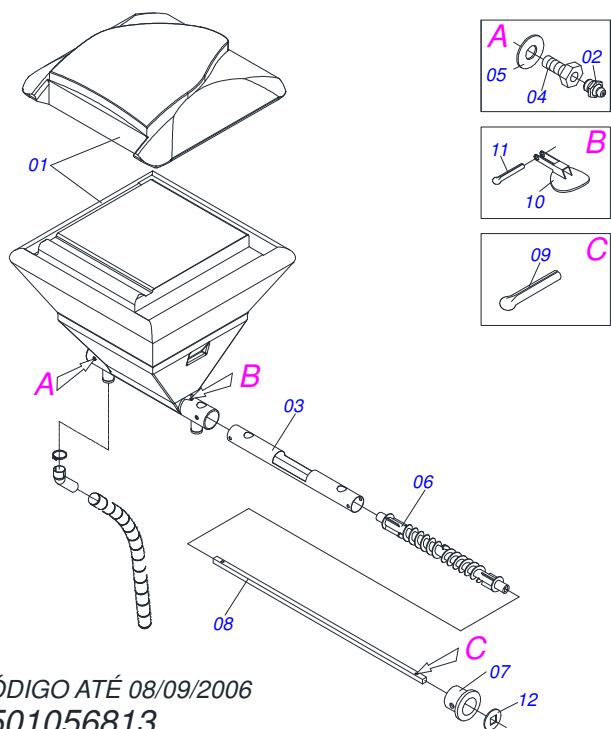
Item	Code	Description	CV	SV
32	0501010455	1.1/4" NUT LOCK	02	02
33	0501010161	1/2" X 1.1/4" BOLT	02	02
34	0503010019	1/2" SPRING WASHER	06	06
35	0503010060	1/2" NUT	06	06
36	0501010216	3/4" X 4-1/2" BOLT	02	02
37	0501048963	5/8" X 2-1/2" BOLT ASSY	01	01
37A	0501014177	5/8" X 2-1/2" BOLT	01	01
37B	0501010947	5/8 NUT LOCK	01	01
37C	0501012140	FLAT WASHER	01	01
37D	0503010013	5/8" NUT	02	02
38	0503010002	1800 GREASE FITTING	02	02
39	0551010309	3200 SQUARE TUBE	02	02
40	0501057372	CONJUNTO ARTICULADOR HOE	02	02
40A	0511068105	PIVOT SUPPORT	01	01
40B	0511068108	ARTICULATION	01	01
40C	0501011388	COUPLING SHAFT	01	01
40D	0503010577	3/16" X 1-1/4" COTTERPIN	01	01
40E	0501063359	DEPTH REGULATOR	01	01
40F	0521010553	0.5" X 3" COUPLING SHAFT	01	01
40G	0503010257	1/8" X 1" COTTERPIN	01	01
40H	0503030399	1"X5.1"X 0.2" COMPRESSION SPRING	01	01
40I	0501010453	FLAT WASHER	01	01
41	0521010674	5/8" FASTENER	04	04
42	0501011978	5/8" FASTENER PLATE	02	02
43	0503010027	SPRING WASHER	10	10
44	0503010013	5/8" NUT	10	10
45	0521010424	GUARD BRACKET	02	02
46	0501010100	5/8 UNC X 2 C S G.5 BOLT	02	02
47	0521010654	1/2" FASTENER	02	02
48	0501011976	1/2" FASTENER PLATE	02	02
49	0621010002	CULTIVATOR HOES	04	04
50	0501011963	7/16" X 1-1/2" BOLT	04	04
51	0501012803	FLAT WASHER	04	04
52	0503010180	7/16" SPRING WASHER	04	04
53	0503010244	7/16" NUT	04	04
54	0521013867	DRAWBAR TRANSPORT LOCK	01	01
55	0503030012	HAIR PIN	02	02
56	0501080473	3/8" X 120" TC-TM HOSE	00	02
57	0501080722	3/8 X 3300 TC-TM HOSE ASSY	00	02
58	0501053834	MALE QUICK COUPLING AGRICULTURAL WITH	04	04
59	0551012843	SEQ. VALV SUPPORT	02	00
60	0501054649	SEQUENTIAL VALVE ASSY	01	00
60A	0501010617	3/4" NIPPLE	02	00
60B	0503010190	2-114 N 3006-9B O'RING	02	00
60C	0501012109	3/4" X 9/16" NIPPLE	04	00
60D	0503011036	2-111 N 3006-9B O'RING	04	00
60E	0531019339	9/16" UNF X 12 PUMP	02	00
61	0501080449	3/8" X 1500 TC-TC HOSE	02	00
62	0501080644	3/8" X 78.7" TC-TC HOSE ASSY	02	00
63	0501080852	3/8" X 1500 TR-TM HOSE	02	00
64	0503011268	3/8" X 2-1/2" BOLT	04	00
65	0503010025	3/8 SPRING WASHER	04	00
66	0503010026	3/8" NUT	04	00
67	0503010363	5/16" X 1" BOLT	02	00
68	0503010179	SPRING WASHER	02	00



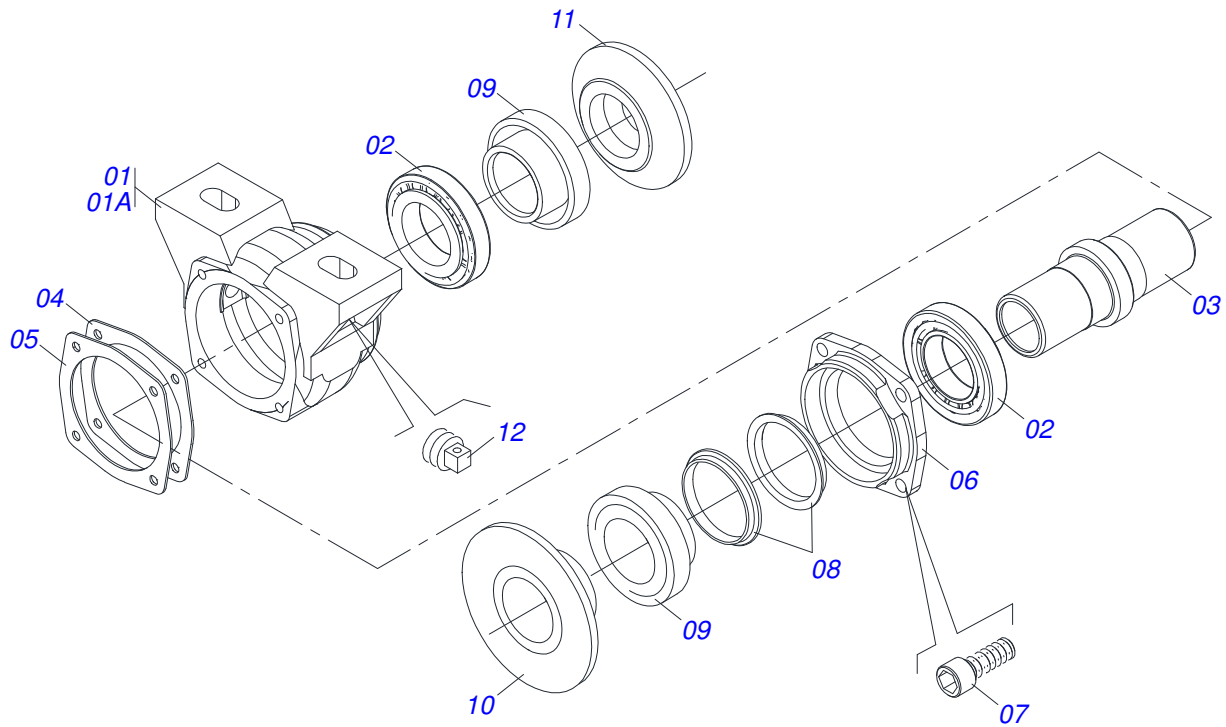
Item	Code	Description	QT
01	0511062810	2.5" X 15" CYLINDER CASE	01
02	0501065662	HYDRAULIC CYLINDER TURNBUCKLE	01
03	0502010471	MOBILE COVER	01
04	0502010780	RING SUPPORT	01
05	0503010163	D-1500 SCRAPER RING	01
06	0503010989	1870-1500-375-B GASKET	01
07	0503010970	W1-1650-500 PK O'RING G.E	01
08	0503011058	8-330 BACK-UP RING	01
09	0503010161	2-330 N 3006 9B O'RING	01
10	0503010285	2-222 N 3006-9B O'RING	01
11	0502010783	1.5" X 2.5" PISTON	01
12	0503010160	2500 2000 GASKET	02
13	0503010973	W2-2500-500 PK O'RING G.E	01
14	0503010063	1" SELF-ALIGNING NUT	01
15	0503030384	CON N-001 PLUG	02
16	0501032666	HYDRAULIC CYLINDER REPAIR KIT	01



Item	Code	Description	QT
00	0501049010	BEARING	01
00A	0501049011	BEARING GUARD	01
01	0502011765	HOUSING DM	01
02	0502011766	HOUSING DM	01
03	0503010111	30210 ROLLER BEARING	02
04	0502040484	BEARING AXLE	01
05	0503030013	4.4" X 3.5" X 0.004" JOINT	02
06	0503030684	4.4" X 3.5" X 0.004" JOINT	01
07	0502020424	HOUSING CAP DM	01
08	0503010134	3/8" X 1" BOLT	04
09	0503030026	SEAL LP JB-253	02
10	0502010541	SEAL RETAINER	02
11	0502010074	INNER FLANGE	01
12	0503010856	OIL PLUG	01



Item	Code	Description	SA-T/SACM-T
01	0503061556	COVER FERTILIZER BOX	01
02	0503010691	1/4" GREASE FITTING	04
03	0503032838	TUBE GUIDE	01
04	0541014215	BEARING BOLT	04
05	0511017302	FLAT WASHER	04
06	0511065979	SCREW THREAD	01
07	0551015225	FERTILIZER CONDUCTOR BEARING	02
08	0541014214	SQUARE SHAFT	01
09	0503010571	1/4" X 1.1/2 COTTERPIN	02
10	0511067667	COVER SOCKET	02
11	0503010362	1/8" X 1.1/4" COTTERPIN	02
12	0501010637	FLAT WASHER	02
13	0503011266	CLAMP 2.1/4" A 3" 57-76	02
14	0551013395	2.1/2" HOSE	02
15	0551013402	2.1/2" HOSE	02



Item	Code	Description	QT
00	0501049008	7.2" X 1-1/4" OIL BATH BEARING	01
00A	0501049009	7.2" X 1-1/4" OIL BATH BEARING	01
01	0502011765	HOUSING DM	01
01A	0502011766	HOUSING DM	01
02	0503010111	30210 ROLLER BEARING	02
03	0502040218	AXLE	01
04	0503030013	4.4" X 3.5" X 0.004" JOINT	02
05	0503030684	4.4" X 3.5" X 0.004" JOINT	01
06	0502020424	HOUSING CAP DM	01
07	0503010134	3/8" X 1" BOLT	04
08	0503030026	SEAL LP JB-253	02
09	0502010541	SEAL RETAINER	02
10	0502010073	OUTER FLANGE	01
11	0502010074	INNER FLANGE	01
12	0503010856	OIL PLUG	01



MARCHESAN IMPLEMENTOS E MÁQUINAS AGRÍCOLAS TATU S.A.

AV. Marchesan, 1979 - Post office box, 131 - CEP 15994-900 - Matão - SP - Brazil

Phone +55 16.3382-8282

(FAX Parts) + 55 16.3382. 8297 - (Export) + 55 16.3382.1003

e.mail: tatu@marchesan.com.br www.marchesan.com.br

Technical Publications: Elaboration

ALESSANDRA PATRICIA KAWAHARA CARRILI

Contact Catálogo:

E-mail = jgaspari@marchesan.com.br

**ORIGINAL PARTS
TATU**

