

PARTS CATALOG

IMPLEMENTS FOR SUGAR CANE

SACM-2 2L/2H ESP1300/1400/1500

Code: 0501091289



Series: S-0899

Rev.: 00

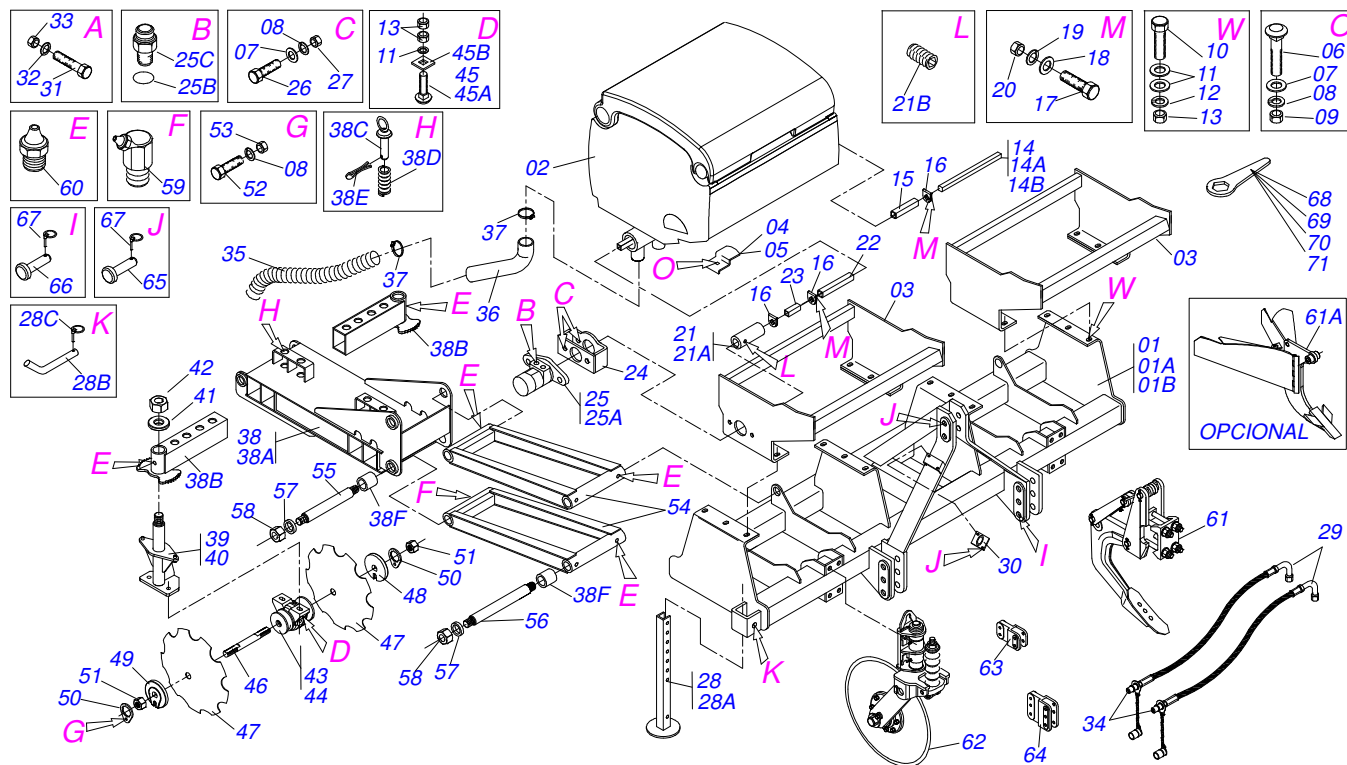
Date Rev.: AGOSTO/1999

**ORIGINAL PARTS
TATU**



INDEX

0909090429	MULTIPLE SUBSOILER ROW CROP CULT	1
0501052221	FERTILIZER BEAM ASSY	2
0909090433	OIL BATH BEARING	3
0501048280	24" BLADE DISC ASSY	4
0501046935	SHANKS SYSTEM ASSY AST/MATIC 450	5
0501052294	POINT FURROWER ARM	6

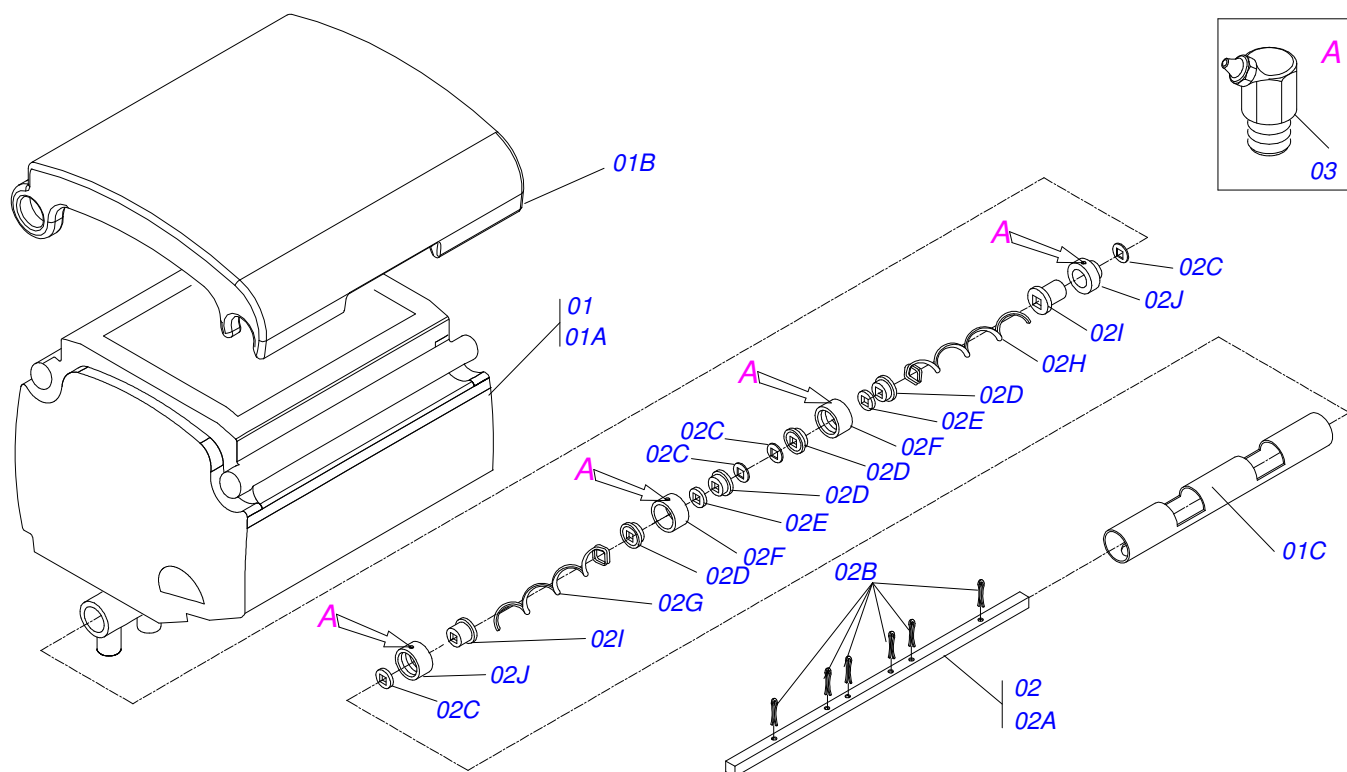


Item	Code	Description	1300	1400	1500
01	0501069377	51.2" CATEGORY SPACING FRAME II	02	02	02
01A	0501069471	55.2" CATEGORY SPACING FRAME II	02	02	02
01B	0501069484	59" CATEGORY SPACING FRAME II	02	02	02
02	0501052221	FERTILIZER BEAM ASSY	02	02	02
03	0511060344	FERTILIZER BEAM SUPPORT	01	01	01
04	0521013865	FERTILIZER BEAM SIDE RIGHT	02	02	02
05	0521013617	FERTILIZER BEAM SIDE LEFT	02	02	02
06	0501010524	1/2" X 2" BOLT	04	04	04
07	0511017302	FLAT WASHER	08	08	08
08	0503010019	1/2" SPRING WASHER	24	24	24
09	0503010020	1/2"NUT	04	04	04
10	0503010232	5/8" X 1.3/4" BOLT	12	12	12
11	0501012140	FLAT WASHER	25	25	25
12	0503010027	SPRING WASHER	12	12	12
13	0503010013	5/8" NUT	14	14	14
14	0521013957	3/4" X 22.4" SQUARE SHAFT	01	01	01
14A	0521013958	3/4" X 26.3" SQUARE SHAFT	01	01	01
14B	0521013959	3/4" X 30.2" SQUARE SHAFT	01	01	01
15	0501018672	AXLE SLEEVE	02	02	02
16	0521010691	AXLE FASTENER	02	02	02
17	0503010373	1/4" X 2" BOLT	02	02	02
18	0501010694	FLAT WASHER	02	02	02
19	0503010143	SPRING WASHER	02	02	02
20	0503010144	1/4" NUT	02	02	02
21	0501049324	MOTOR HYDRAULIC BOLT SLEEVE	01	01	01
21A	0501069662	MOTOR HYDRAULIC SLEEVE	01	01	01
21B	0503011136	1/2" X 1/2" CSI BOLT	01	01	01
22	0531012291	3/4" X 3.1" SQUARE SHAFT	01	01	01
23	0511014217	0.8" X 2" SQUARE SLEEVE	01	01	01
24	0511060346	FIXER MOTOR SUPPORT	01	01	01
25	0501053421	VALVE MOTOR HYDRAULIC ASSY	01	01	01
25A	0503012829	VALVE HYDRAULIC MOTOR ASSY	01	01	01
25B	0503010045	2-116 N 3006-9B O'RING	02	02	02



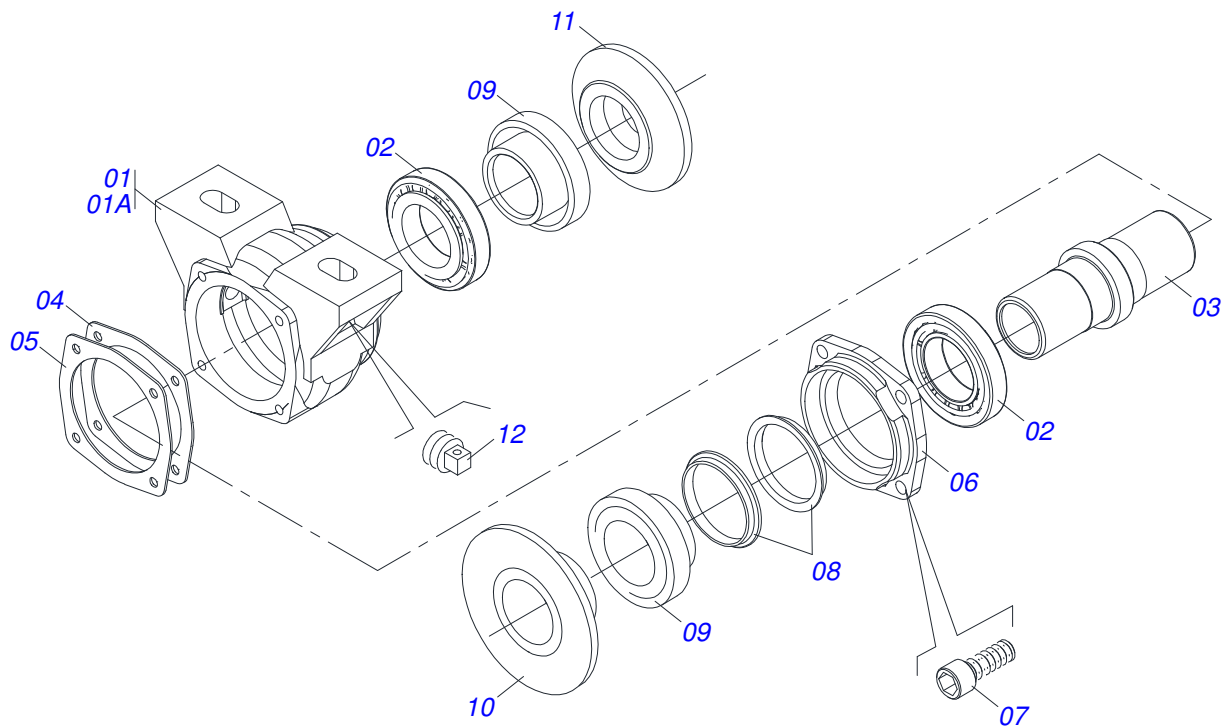
SACM-2 2L/2H ESP1300/1400/1500
MULTIPLE SUBSOILER ROW CROP CULT

Item	Code	Description	1300	1400	1500
25C	0501010590	7/8" REDUCTION NIPPLE	02	02	02
26	0503010920	1/2" X 1.1/2" BOLT	04	04	04
27	0503010060	1/2" NUT	04	04	04
28	0501051903	PLOUGH SUPPORT ASSY	03	03	03
28A	0511060688	900 PLOUGH SUPPORT	03	03	03
28B	0501011075	PIN	03	03	03
28C	0503030085	LOCK PIN	03	03	03
29	0501080676	1/2" X 122" HOSE ASSY TC-TM	02	02	02
30	0511062800	HOSE ASSY FIZER	01	01	01
31	0503010371	5/16" X 1" BOLT	02	02	02
32	0503010179	SPRING WASHER	02	02	02
33	0503010337	5/16" NUT	02	02	02
34	0501053834	MALE QUICK COUPLING AGRICULTURAL WITH	02	02	02
35	0501010769	2" X 31.5" HOSE ASSY	04	04	04
36	0503031050	CURVED CONDUCTOR	04	04	04
37	0503010246	CLAMP	08	08	08
38	0501052010	REGULATOR FRAME HORROW TANDEM	02	02	02
38A	0501069468	ROCKING HORROW	01	01	01
38B	0501069469	DISC REG DRIVER REG	04	04	04
38C	0501069472	DRIVER REG LOCK PIN	04	04	04
38D	0503030978	COMPRES SPRING	04	04	04
38E	0503010038	3/16 X 2 COTTERPIN	04	04	04
38F	0521012122	DRIVER ROCKING SLEEVE SUPPORT	16	16	16
39	0511063098	DISC SUPPORT UPPER	04	04	04
40	0511063099	DISC REG SUPPORT LOWER	04	04	04
41	0521012120	WASHER	08	08	08
42	0503010290	SELF ADJUSTING 1.1/2" UNF NUT	08	08	08
43	0501049008	7.2" X 1-1/4" OIL BATH BEARING	04	04	04
44	0501049009	7.2" X 1-1/4" OIL BATH BEARING	04	04	04
45	0501048963	5/8" X 2-1/2" BOLT ASSY	16	16	16
45A	0501014177	5/8" X 2-1/2" BOLT	16	16	16
45B	0501010947	5/8 NUT LOCK	16	16	16
46	0521012160	1.1/4" X 290 AXLE	08	08	08
47	0602025011	0.7" X 0.2" NOTCHED DISC BLADE	16	16	16
48	0502010834	1-1/4" INNER AXLE WASHER	08	08	08
49	0502010835	1-1/4" EXTERNAL AXLE WASHER	08	08	08
50	0501010455	1.1/4" NUT LOCK	16	16	16
51	0501010087	1.1/4" NUT	16	16	16
52	0501010161	1/2" X 1.1/4" BOLT	16	16	16
53	0503010060	1/2" NUT	16	16	16
54	0501069467	ROCKING DRIVER	04	04	04
55	0521012121	AXLE SMALEER PIVOT	04	04	04
56	0521012123	DRIVER ROCKING AXLE LARGER PIVOT	04	04	04
57	0521012087	FLAT WASHER	16	16	16
58	0503010063	1" SELF-ALIGNING NUT	16	16	16
59	0503010004	1890 GREASE FITTING	04	04	04
60	0503010002	1800 GREASE FITTING	12	12	12
61	0501046935	SHANKS SYSTEM ASSY AST/MATIC 450	02	02	02
61A	0501052294	POINT FURROWER ARM	02	02	02
62	0501048280	24" BLADE DISC ASSY	02	02	02
63	0502040507	3 POINT EXTENSION UPPER	01	01	01
64	0502040506	3 POINT EXTENSION LOWER	02	02	02
65	0521012124	COUPLING SHAFT	06	06	06
66	0521012125	FRAME TRACTOR AXLE UPPER	03	03	03
67	0503030085	LOCK PIN	09	09	09
68	0521012126	1.3" CABLE FLAT WRENCH HEX	01	01	01
69	0521012200	2" CABLE FLAT WRENCH	01	01	01
70	0531014773	2.3 CABLE FLAT WRENCH HEX	01	01	01
71	0521012199	1.6" GANG BOLT WRENCH	01	01	01

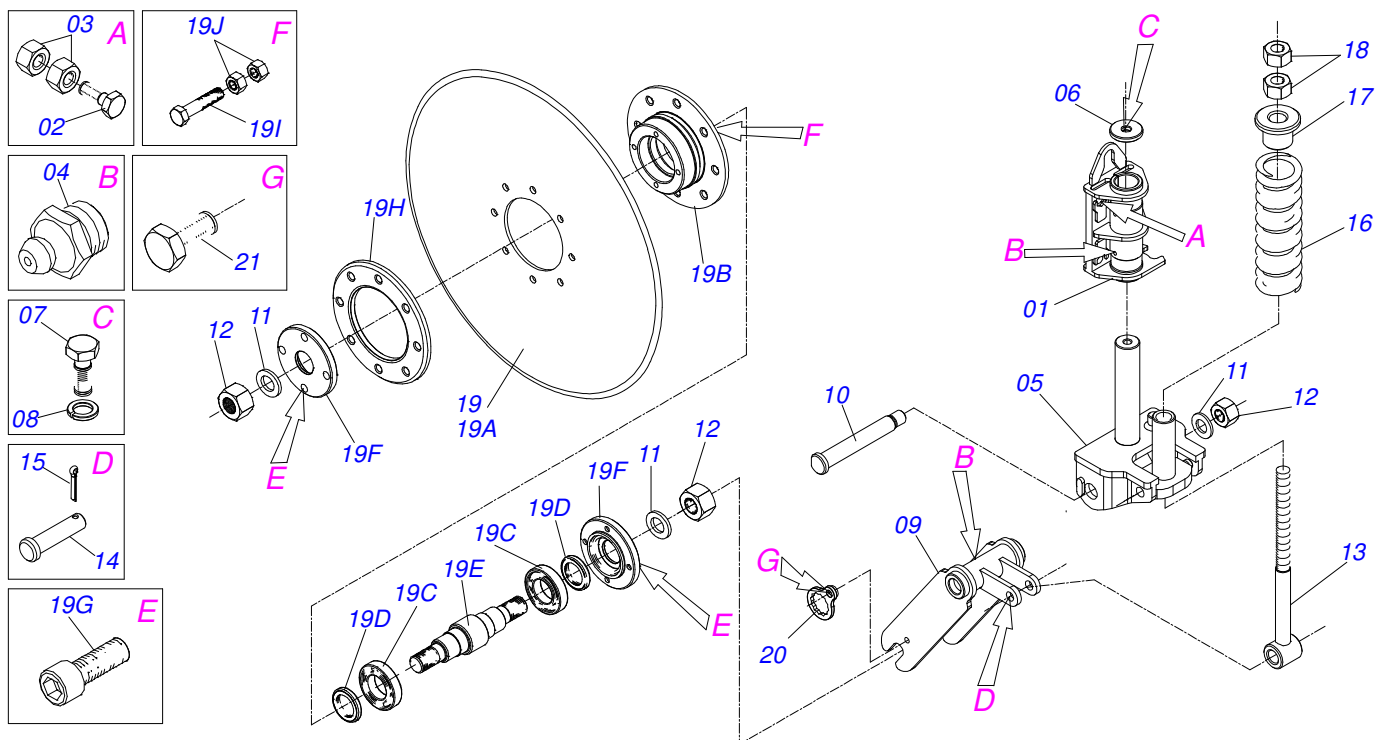


Item	Code	Description	QT
00	0501052221	FERTILIZER BEAM ASSY	
01	0503031548	YELLOW COVER/FERTILIZER BEAM GREEN	01
01A	0503031534	FERTILIZER BEAM GREEN	01
01B	0503031535	FERTILIZER BEAM COVER YELLOW	01
01C	0521013953	Ø 60 X Ø 53 X 645 PVC TUBE	01
02	0501052148	FERTILIZER BEAM AXLE ASSY	01
02A	0521013952	3/4" X 28.4" FERTILIZER BEAM AXLE Q	01
02B	0503010571	1/4" X 1.1/2 COTTERPIN	06
02C	0501010637	FLAT WASHER	04
02D	0503031527	AGRICULTURAL BEARING	04
02E	0501013774	GREASE SEAL	02
02F	0502011681	GUIDES AXLE FERTILIZER SLEEVE CENTE	02
02G	0503031469	RIGHT HELICAL SPRING	01
02H	0503031471	LEFT HELICAL SPRING	01
02I	0503030275	AGRICULTURAL BEARING	02
02J	0502020646	FERTILIZER AXLE SLEVE GUIDES	02
03	0503012102	CREASE FITTING	04

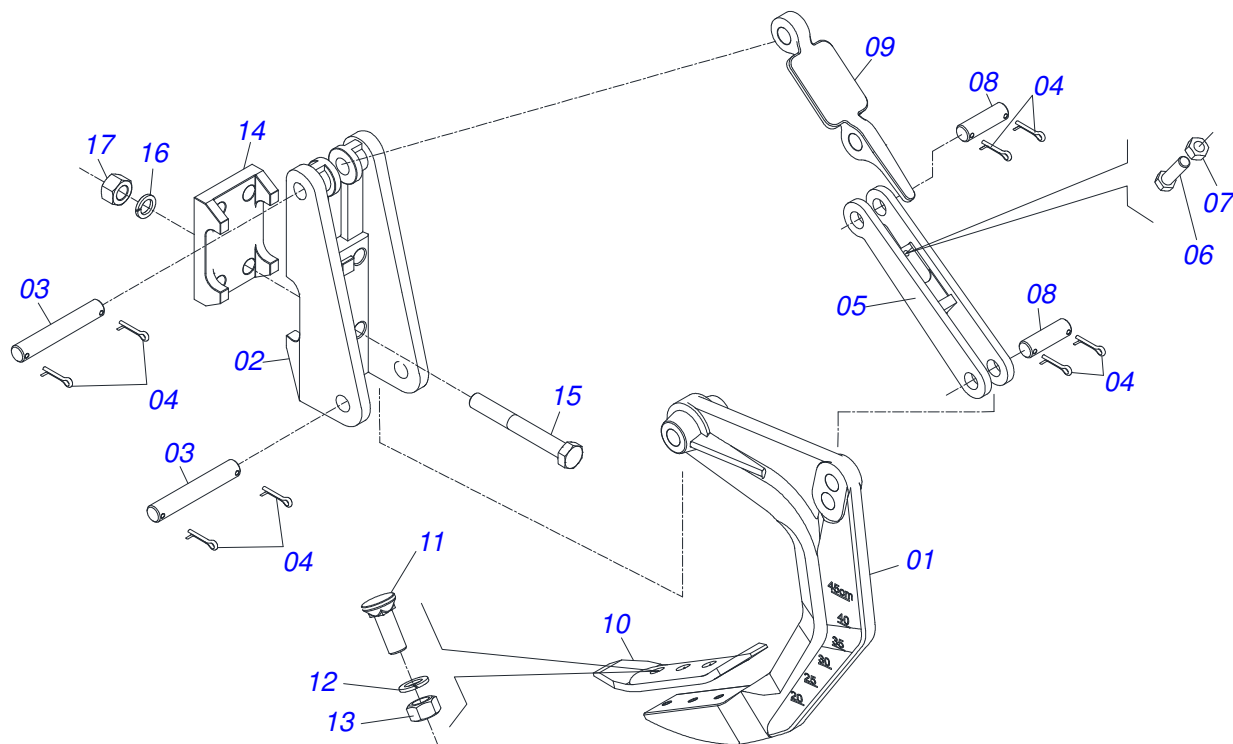
OIL BATH BEARING



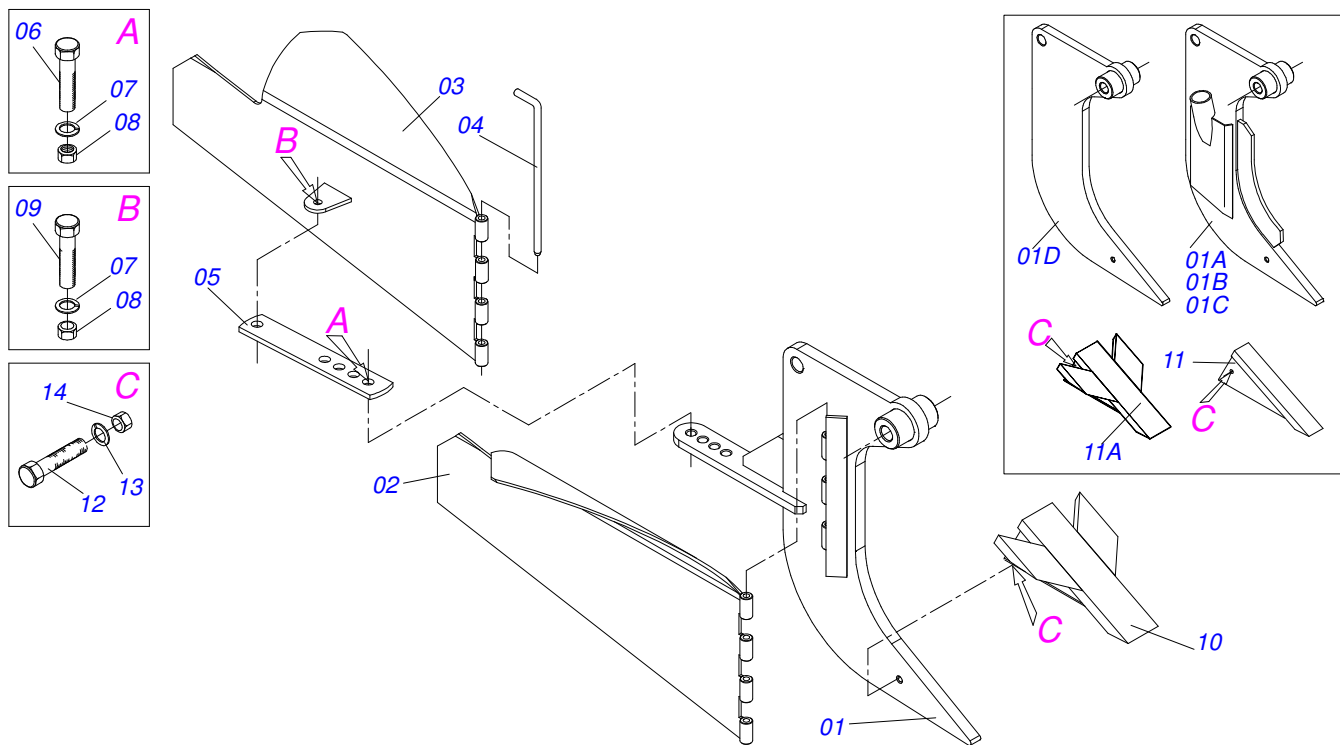
Item	Code	Description	
00	0501049008	7.2" X 1-1/4" OIL BATH BEARING	01
00A	0501049009	7.2" X 1-1/4" OIL BATH BEARING	01
01	0502011765	HOUSING DM	01
01A	0502011766	HOUSING DM	01
02	0503010111	30210 ROLLER BEARING	02
03	0502040218	AXLE	01
04	0503030013	4.4" X 3.5" X 0.004" JOINT	02
05	0503030684	4.4" X 3.5" X 0.004" JOINT	01
06	0502020424	HOUSING CAP DM	01
07	0503010134	3/8" X 1" BOLT	04
08	0503030026	SEAL LP JB-253	02
09	0502010541	SEAL RETAINER	02
10	0502010073	OUTER FLANGE	01
11	0502010074	INNER FLANGE	01
12	0503010856	OIL PLUG	01



Item	Code	Description	QT
00	0501048280	24" BLADE DISC ASSY	01
01	0501069386	BLADE DISC SUPPORT	01
02	0503010478	3/4" X 3-1/2" BOLT	04
03	0503010014	3/4" NUT	08
04	0503010002	1800 GREASE FITTING	03
05	0501069639	BLADE DISC BASE SWIVEL	01
06	0521012660	WASHER	01
07	0501010098	HEX BOLT 3/4 UNC X 2 C S G.5 ZN	01
08	0503010023	SPRING WASHER	01
09	0501069640	BLADE DISC FORK	01
10	0521012662	ROTATIVE AXLE FIXER FORK BASE	01
11	0521012664	FLAT WASHER	03
12	0501010087	1.1/4" NUT	03
13	0501069638	R1" X 13.8" X 0.9" SPRING ROD	01
14	0521012659	SPRING ROD AXLE FIXER	01
15	0503010571	1/4" X 1.1/2 COTTERPIN	01
16	0503031390	2.1"X10"X1/2" COMPRESSION SPRING	01
17	0521012663	SPRING SLEEVE FIXER	01
18	0501010059	1.5/8 NUT	02
19	0501052013	24" BLADE DISC WITH HOUSING	01
19A	0603030044	24" X 0.2" FLAT PLAIN DISC	01
19B	0502011478	DISC HUB	01
19C	0503011291	6209 BALL BEARING	02
19D	0503012106	00521-BR SEAL	02
19E	0521012661	BLADE DISC AXLE HUB	01
19F	0502011477	BLADE DISC HOUSIG CP	02
19G	0503010134	3/8" X 1" BOLT	08
19H	0521011824	BLADE DISC FLANGE OUTER	01
19I	0503010905	1/2" X 2-1/4" BOLT	08
19J	0503010060	1/2" NUT	16
20	0501069637	AXLE NUT LOCK	02
21	0503010962	5/8" X 1-1/4" BOLT	02



Item	Code	Description	QT
01	0502011264	ARM AST/MATIC	01
02	0502011165	REAR FIXER	01
03	0511015688	1.1" X 7.1" COUPLING SHAFT	02
04	0503010571	1/4" X 1.1/2 COTTERPIN	08
05	0502011164	SUPPORT SPRING	01
06	0503811135	BOLT	01
07	0503010244	7/16" NUT	01
08	0511015689	1.1" X 3.5" COUPLING SHAFT	02
09	0521011631	AUTOMATIC RESET	01
10	0624010005	POINT SUBSOILER 16"X3"X1/2" E019	01
11	0503812956	BOLT	03
12	0503011440	SPRING WASHER	03
13	0503010020	1/2"NUT	03
14	0502011166	FRONT FIXER	01
15	0511019527	1" X 8" BOLT	04
16	0503011438	SPRING WASHER	04
17	0503010340	1" NUT	04



Item	Code	Description	QT
00	0501052294	POINT FURROWER ARM	01
01	0501069713	FURROWER ARM	01
01A	0511060619	CONDUCTO RIGHT WITH ARM SUBSOILER	01
01B	0511060620	CONDUCTO LEFT WITH ARM SUBSOILER	01
01C	0511060621	CONDUCTO LEFT / RIGHT ARM SUBSOILER	01
01D	0501069658	SUBSOILER ARM	01
02	0501069714	ARM SUBSOILER WING RIGHT	01
03	0501069715	ARM SUBSOILER WING LEFT	01
04	0521012821	PIVOT SHAFT	02
05	0501010729	ADJUSTMENT BAR	02
06	0501013233	5/8" X 2-3/4" BOLT	01
07	0503010027	SPRING WASHER	03
08	0503010013	5/8" NUT	03
09	0503010899	5/8" X 2-1/4" BOLT	02
10	0501069716	SUBSOILER TIP CUERPO	01
11	0501069659	SUBSOILER TIP	01
11A	0501069152	SUBSOILER TIP CUERPO	01
12	0503011236	3/8" X 2" BOLT	01
13	0503010025	3/8 SPRING WASHER	01
14	0503010026	3/8" NUT	01



MARCHESAN

MARCHESAN IMPLEMENTOS E MÁQUINAS AGRÍCOLAS TATU S.A.

AV. Marchesan, 1979 - Post office box, 131 - CEP 15994-900 - Matão - SP - Brazil

Phone +55 16.3382-8282

(FAX Parts) + 55 16.3382. 8297 - (Export) + 55 16.3382.1003

e.mail: tatu@marchesan.com.br www.marchesan.com.br

Technical Publications: Elaboration

ALESSANDRA PATRICIA KAWAHARA CARRILI

Contact Catálogo:

E-mail = jgaspari@marchesan.com.br

**ORIGINAL PARTS
TATU**



MARCHESAN