

AUXILIARY PRODUCTS

EB 610

Code: 0501091257
Series: S-0506
Revision: 00
Date Revision: JUNHO/2022

PARTS CATALOGUE



MARCHESAN



PRODUCTS

Code	Description	
0109030020	EB 0610 NARROW	S-0506
0109030017	EB 0610 S/BLOQUEADOR	S-0506
0109030012	EB 0610 WIDE	S-0506

ATTENTION: IMPORTANT

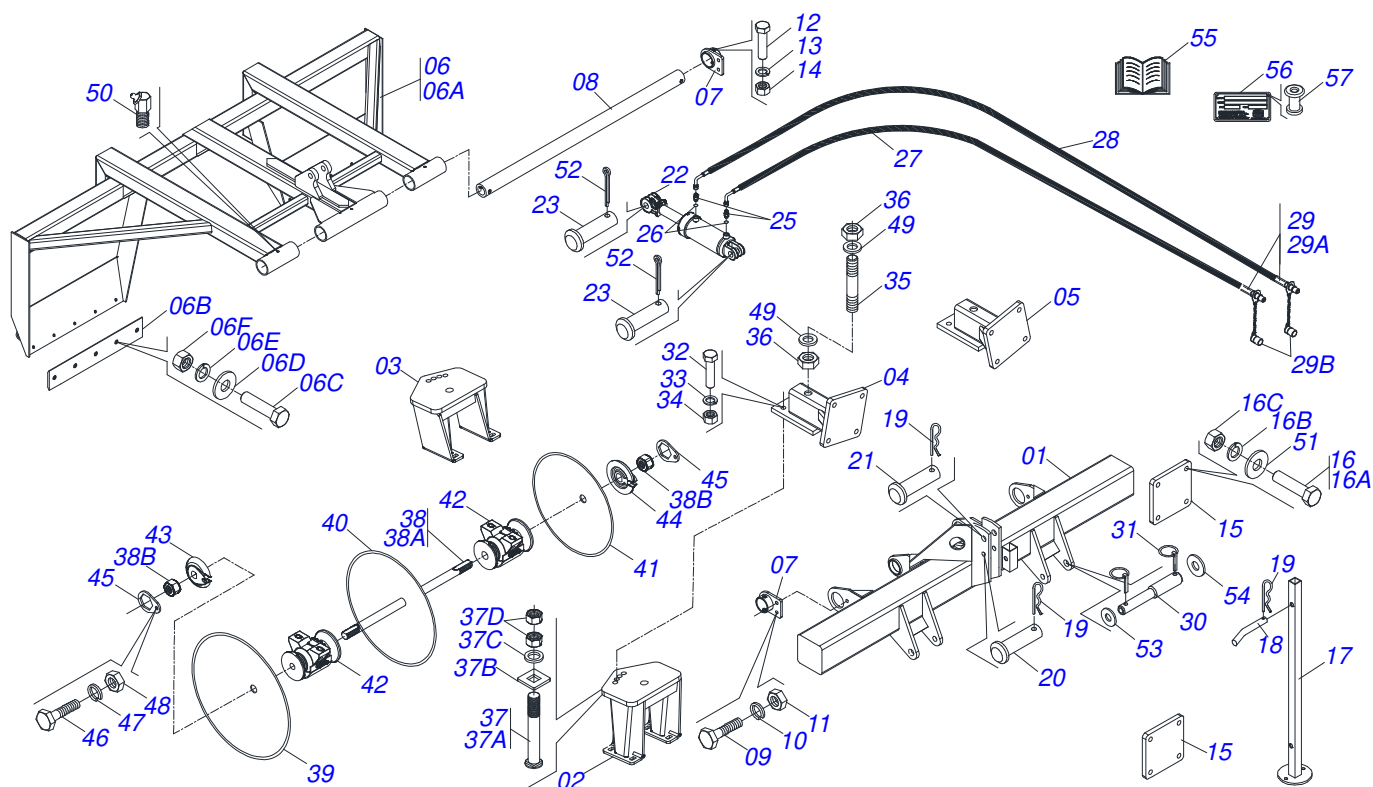
Marchesan S.A. reserves the right to improve and/or modify the technical features of its products, without obligation to do the same with those products already sold and without prior knowledge of the dealer or the consumer. The photos are only illustrative.



MARCHESAN

INDEX

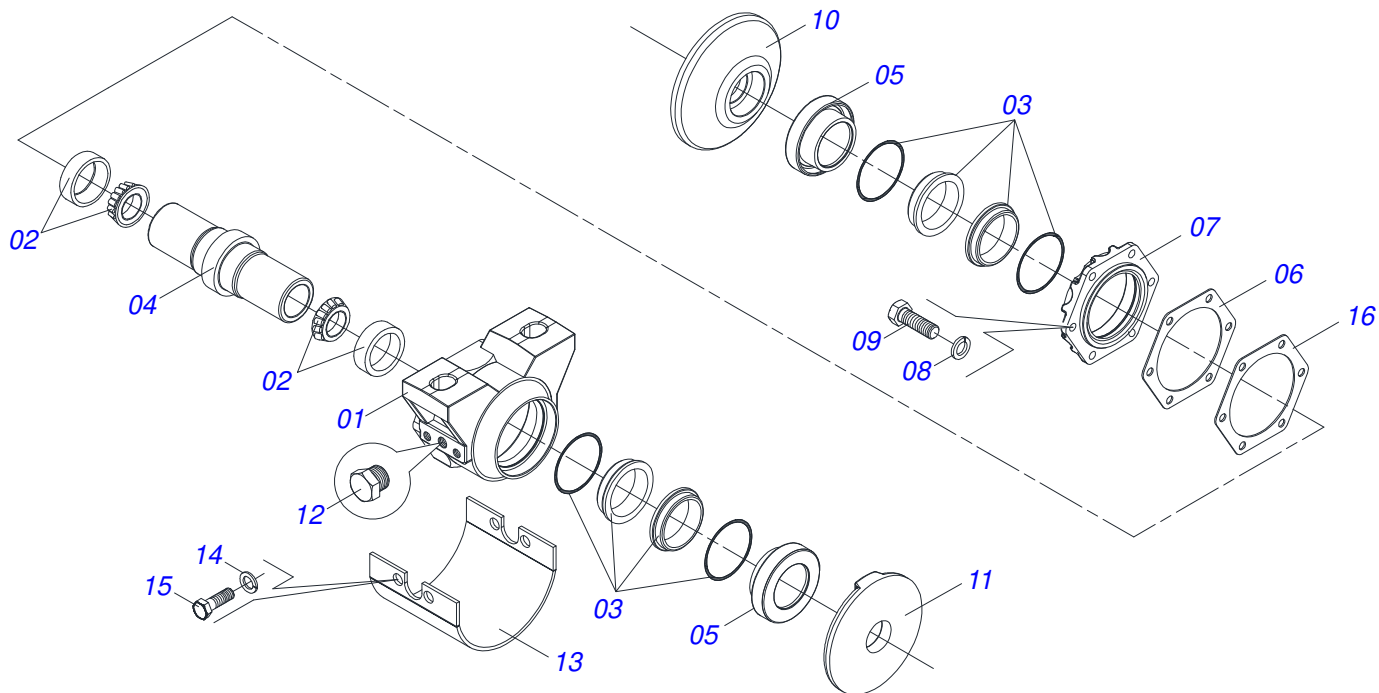
0909092967	FRAME	1
0511040032	262 X 1.5/8" OIL BATH BRG ASSY,OPT	2
0511044949	HYDRAULIC CYLINDER	3



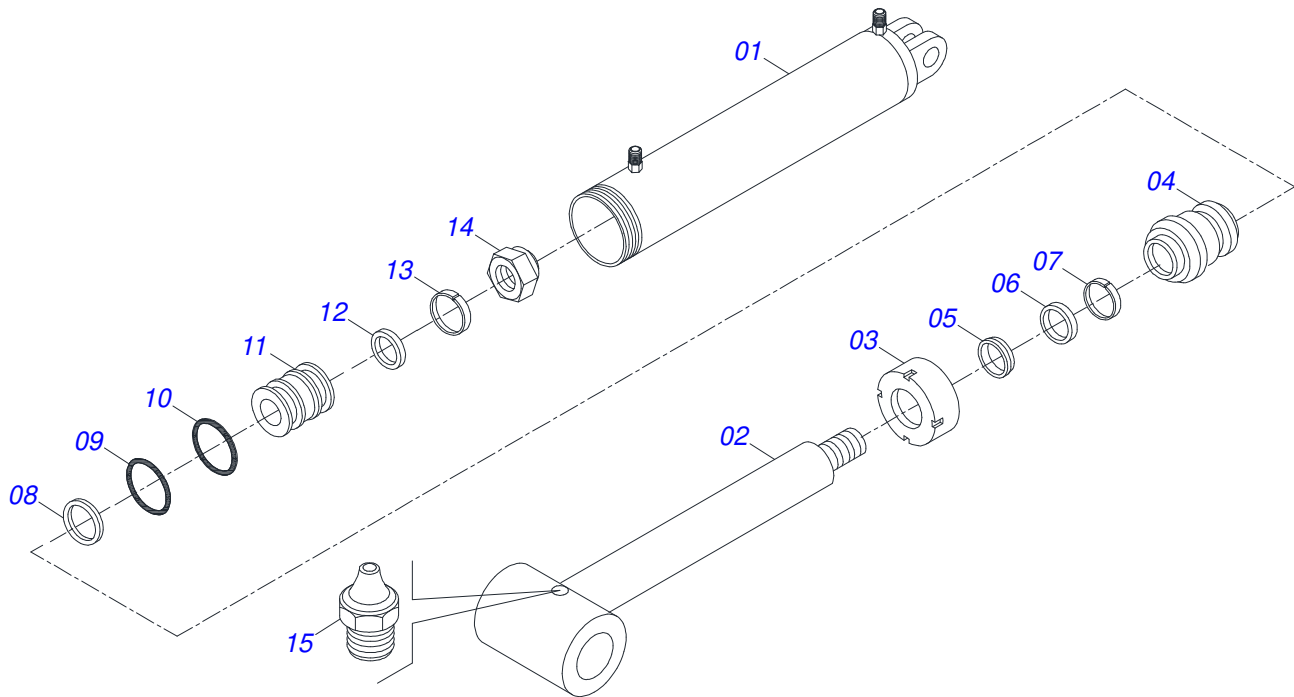
Item	Code	Description	See page	QT
01	0511067761	FRONT FRAME		01
02	0511067758	RIGHT FRAME		01
03	0511067759	LEFT FRAME		01
04	0511067756	LH GANG SUPPORT		01
05	0511067757	LH GANG SUPPORT		01
06	0511045129	REAR BLADE SUPPORT ASSY		01
06A	0511067760	SCRAPER REAR SUPPORT		01
06B	0551011677	SCRAPER 680 EB 610		02
06C	0503014193	1/2" BSW X 2" BOLT		10
06D	0511017302	FLAT WASHER		10
06E	0503010019	1/2" SPRING WASHER		10
06F	0503010020	1/2"NUT		10
07	0511067762	REAR BLADE SUPPORT		02
08	0551011673	73,50 X 62,00 X 1465 EB 0610 TUBE		01
09	0503010233	5/8" X 2-1/2" BOLT		04
10	0503010027	5/8" SPRING WASHER		04
11	0503010013	5/8" NUT		04
12	0501010216	3/4" X 4-1/2" BOLT		02
13	0503010023	3/4" SPRING WASHER		02
14	0503010014	3/4" NUT		02
15	0551011476	FIXER PLATE		02
16	0501042311	1-1/4" X 11" ASSY BOLT		08
16A	0501014175	1-1/4" X 11" BOLT		01
16B	0503010070	SPRING WASHER		01
16C	0501010087	1.1/4" NUT		01
17	0501069951	PLOUGH SUPPORT		01
18	0501011075	PIN		01
19	0503031035	HITCH PIN CLIP		03
20	0521010578	COUPLING SHAFT		01
21	0521012538	1.2" X 3.5" COUPLING SHAFT		01
22	0511044949	HYDRAULIC CYLINDER	3	01



Item	Code	Description	See page	QT
23	0501019719	1.1/4" X 155MM COUPLING SHAFT		01
24	0521010780	1.2" X 4.5" COUPLING SHAFT		01
25	0501010617	3/4" NIPPLE		02
26	0503010190	2-114 N 3006-9B O'RING		02
27	0501080550	3/8" X 55.12" TC-TM HOSE		01
28	0501080601	3/8" X 66.9 TC-TM HOSE		01
29	0501053834	MALE QUICK COUPLER		02
29A	0503011627	MALE QUICK COUPLER AGR 1/2 NPT		01
29B	0503011882	MALE QUICK COUPLER CAP		01
30	0551011381	LOWER PIN		02
31	0503030430	7/16 X 2" PIN LOCK		04
32	0501010171	BOLT 1 UNC X 3.1/2 C S G.5		04
33	0503010012	1" SPRING WASHER		04
34	0501010059	1.5/8 NUT		04
35	0551016367	310 X R.1.1/2" DRAWBAR		02
36	0501010110	1.1/2" NUT		04
37	0501041925	3/4" X 3-1/2" BOLT ASSY		08
37A	0501010950	3/4" X 3-1/2" BOLT		01
37B	0501010949	3/4" SQUARE WASHER		01
37C	0501010322	FLAT WASHER		01
37D	0503010014	3/4" NUT		02
38	0511045127	1.5/8 7FPP X 690 7FPP AXLE		02
38A	0551011676	1.5/8 7FPP X 690 AXLE		01
38B	0502040640	1.5/8" 2.3/4" NUT		02
39	0601033231	26" X 6 PLAIN DISC BLADE		02
40	0601030301	24" X 6 PLAIN DISC BLADE		02
41	0601029288	22"X 0.2" PLAIN DISC BLADE		02
42	0511040032	262 X 1.5/8" OIL BATH BRG ASSY,OPT	2	04
43	0502011047	1-5/8" INNER AXLE WASHER		02
44	0502011048	1-5/8" EXTERNAL AXLE WASHER		02
45	0511014339	1-5/8" 2.8" NUT LOCK		04
46	0503011267	BOLT 5/8 UNC X 1.1/2 C S G.5 ZN		04
47	0503010027	5/8" SPRING WASHER		04
48	0503010013	5/8" NUT		04
49	0503010069	1.1/2" SPRING WASHER		04
50	0503010003	1845 GREASE FITTING		03
51	0501017779	32 X 60 X 4.75 FLAT WASHER		08
52	0503010571	1/4" X 1.1/2 COTTERPIN		02
53	0511017480	FLAT WASHER		02
54	0521011100	FLAT WASHER		02
55	0511034345	BAG WITH INSTRUCTION MANUAL		01
56	0503034003	SERIAL NUMBER TAG 61 X 118		01
57	0503010001	3.2 X 5.5 RIVET		04



Item	Code	Description	See page	QT
01	0502020633	HOUSING BEARING		01
02	0503010005	32212 ROLLER BEARING		02
03	0503030027	DUO-CONE SEAL		02
04	0502010900	BEARING AXLE		01
05	0502010735	SEAL RETAINER		02
06	0503030030	5.6" X 4.4" X 0.01" GASKET		02
07	0502020161	WEAR PLATE BEARING		01
08	0503011443	3/8" SPRING WASHER		06
09	0503010237	3/8" X 1" BOLT		06
10	0502040239	OUTER FLANGE		01
11	0502040240	INNER FLANGE		01
12	0503010856	OIL PLUG		02
13	0521012933	BEARING WEAR PLATE		01
14	0503010019	1/2" SPRING WASHER		02
15	0503011401	1/2" X 3/4" BOLT		02
16	0503030685	5.5" X 4.4" X 0.003" GASKET		02



Item	Code	Description	See page	QT
01	0511067518	85,72 X 260,50 CYLINDER CASE		01
02	0511067519	44,45 X 300 TURNBUCLE		01
03	0502010993	DETACHABLE COVER		01
04	0502010781	RING SUPPORT		01
05	0503010761	D-1750 SCRAPER RING		01
06	0503010990	GASKET		01
07	0503010949	W2-2000-500 PK RING G.E		01
08	0503011060	8-336 BACK-UP RING		01
09	0503010976	2-336 N 3006-9B O'RING		01
10	0503010042	2-214 N 3006-9B O'RING		01
11	0502010843	1.8" X 3.4" PISTON		01
12	0503010170	PACKING 3120 2750		02
13	0503010948	W4-3346-590 PK RING G.E		01
14	0503010063	1" SELF-ALIGNING NUT		01



MARCHESAN

Technical Publications | Elaboration and Revision
JOÃO VIRGINIO ROCHA

www.marchesan.com.br

