

# PARTS CATALOG

## HINGE TYPE OFFSET DISK HARROW

GHD-2 3009

Code: 0501091215



Series: S-1104

Rev.: 00

Date Rev.: MAIO/2018

ORIGINAL PARTS  
TATU



# PRODUCTS

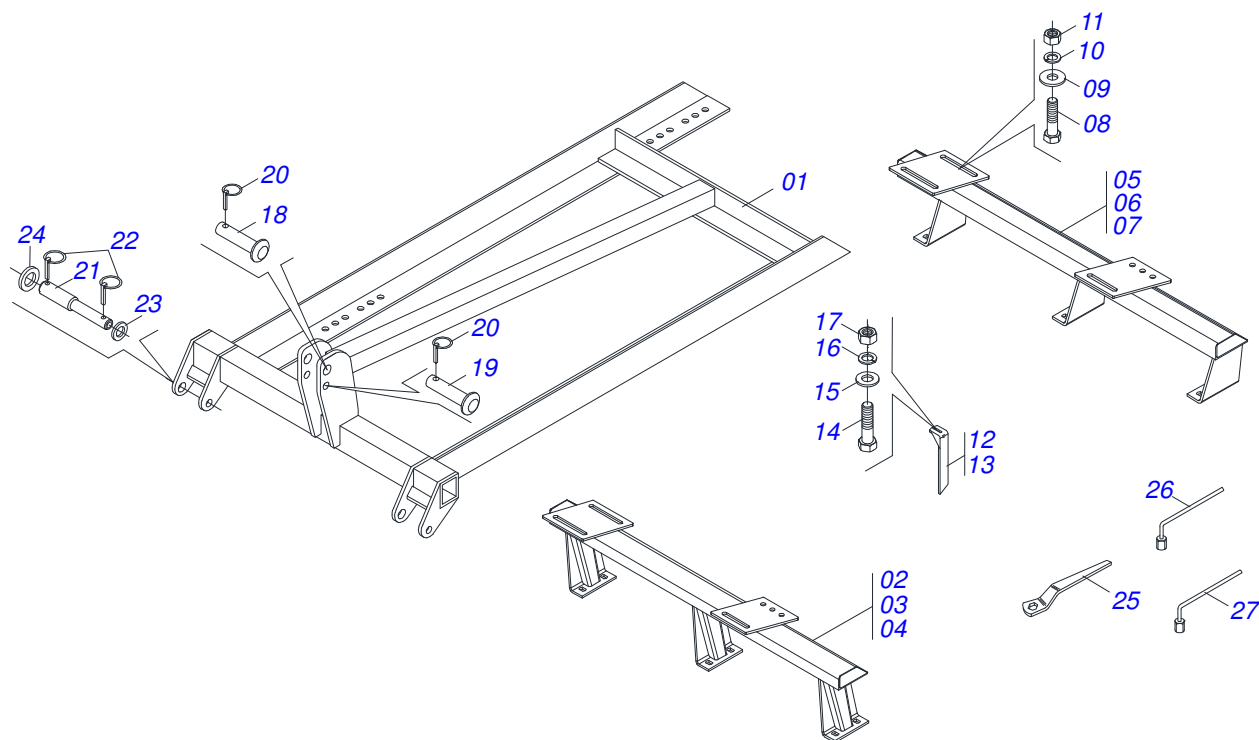
Code	Description
0102220044	GHD-2 3009 16 X20 X 4,0 DM MT S1104
0102220081	GHD-2 3009 16 X20 X 4,5 DM MT S1104
0102220058	GHD-2 3009 16 X22 X 4,5 DM MT S1104
0102220039	GHD-2 3009 16 X24X 4,75 DM MT S1104
0102220062	GHD-2 3009 16 X24X 4,75 DM MT S1104
0102220045	GHD-2 3009 18 X22 X 4,0 DM MT S1104
0102220049	GHD-2 3009 18 X22 X 4,5 DM MT S1104
0102220063	GHD-2 3009 18 X22X 4,50 DM MT S1104
0102220040	GHD-2 3009 18 X24X 4,75 DM MT S1104
0102220064	GHD-2 3009 18 X24X 4,75 DM MT S1104
0102220078	GHD-2 3009 18 X24X 6,00 DM DR S1104
0102220059	GHD-2 3009 20 X 22 X 4,5 DM MT S406
0102220041	GHD-2 3009 20 X24X 4,75 DM MT S1104
0102220065	GHD-2 3009 20 X24X 4,75 DM MT S1104
0102220079	GHD-2 3009 20 X24X 6,00 DM DR S1104
0102220052	GHD-2 3009 20 X24X 6,00 DM MT S1104

## ATTENTION: **IMPORTANT**

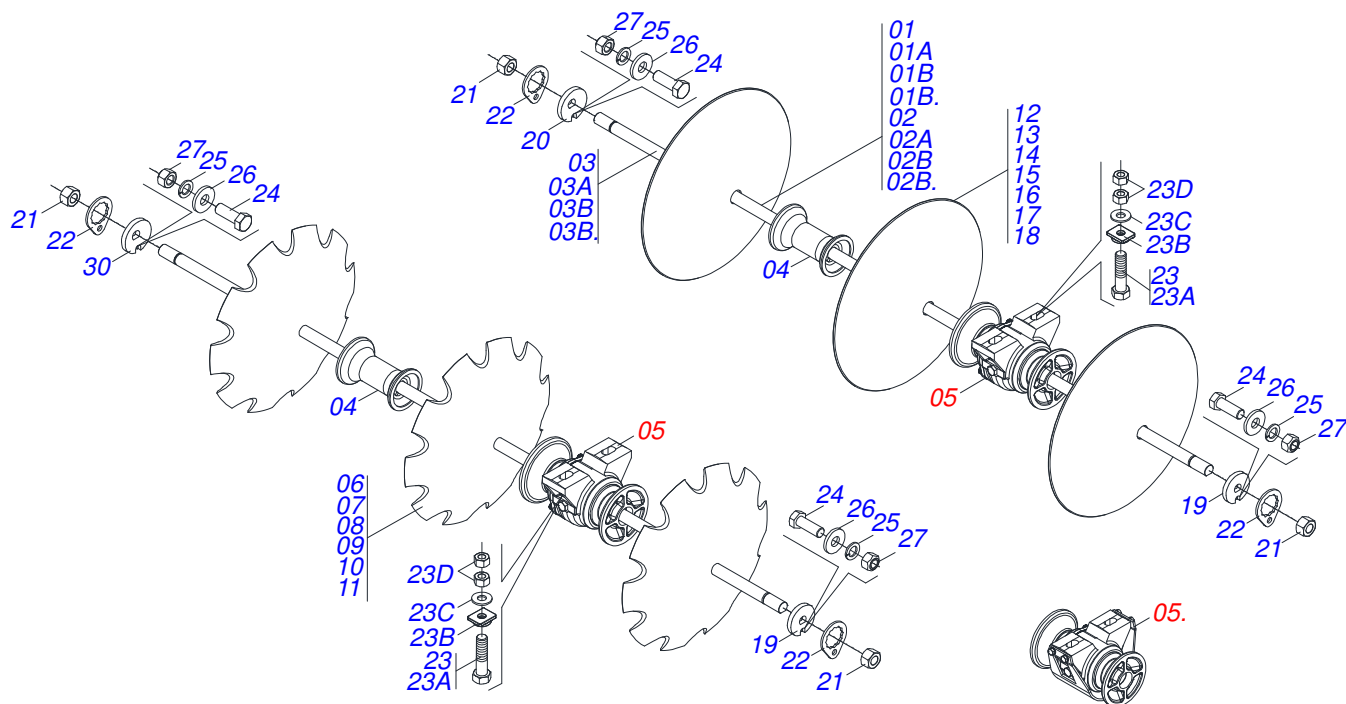
MARCHESAN S/A RESERVES THE RIGHT AT ANY TIME TO MAKE IMPROVEMENTS IN THE DESIGN, MATERIAL OR SPECIFICATIONS OF MACHINERY, EQUIPMENT OR PARTS WITHOUT THEREBY BECOMING LIABLE TO MAKE SIMILAR CHANGES IN MACHINERY, EQUIPMENT OR PARTS PREVIOUSLY SOLD.

# INDEX

0909094090	GHD2 3009	.....	1
0909094030	GANG DISC MT 16 18 20	.....	2
0909094031	GANG DISC R 18/20	.....	3
0501044315	9" X 1-1/2" OIL BATH BEARING	.....	4
0501046311	OIL BATH BEARING	.....	5



Item	Code	Description	16 18 20
01	0511066296	FRAME GHD-2 12 A 20 S-1104	01 01 01
02	0501066626	FRONT FRAME	01 00 00
03	0501066686	FRONT FRAME	00 01 00
04	0501066688	FRONT FRAME	00 00 01
05	0501066627	REAR FRAME	01 00 00
06	0501066687	REARFRAME	00 01 00
07	0501066689	REAR FRAME	00 00 01
08	0501010098	HEX BOLT 3/4 UNC X 2 C S G.5 ZN	08 08 08
09	0501010322	FLAT WASHER	08 08 08
10	0503010023	SPRING WASHER	08 08 08
11	0503010014	3/4" NUT	08 08 08
12	0501066629	FRONT SCRAPER GHD	04 05 06
13	0501066630	REAR SCRAPER GHD	04 05 06
14	0503010920	1/2" X 1.1/2" BOLT	08 10 12
15	0511017302	FLAT WASHER	08 10 12
16	0503010019	1/2" SPRING WASHER	08 10 12
17	0503010060	1/2" NUT	08 10 12
18	0511011887	COUPLING SHAFT	01 01 01
19	0521010578	COUPLING SHAFT	01 01 01
20	0503030085	LOCK PIN	02 02 02
21	0541015542	1.1/8" HITCH AXLE	02 02 02
22	0503030430	7/16 X 2" PIN LOCK	04 04 04
23	0511017480	FLAT WASHER	02 02 02
24	0501012916	FLAT WASHER 38,50 X 66 X 4,75 ZN	02 02 02
25	0501011432	1-1/2" AND 1-5/8 GANG BOLT WRENCH	02 02 02
26	0501068273	5/8" WRENCH	01 01 01
27	0503016140	3/4" WRENCH CABLE CYLINDRICAL	01 01 01

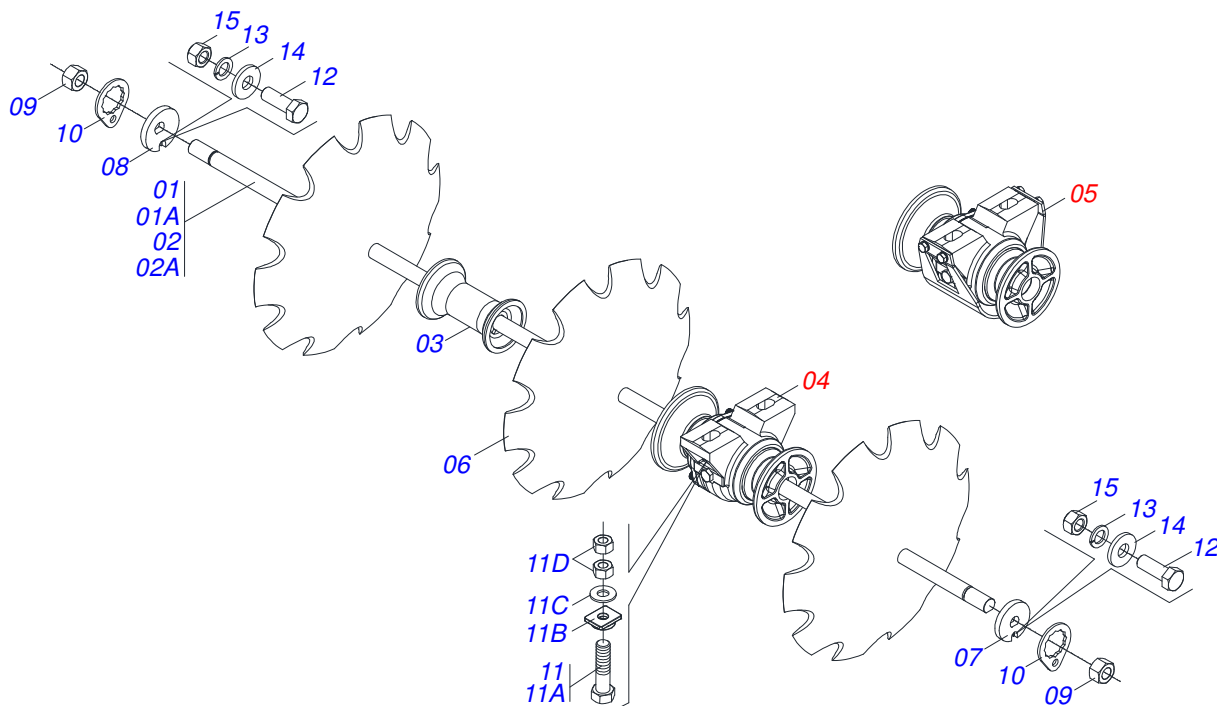


Item	Code	Description	16 18 20
01	0501024882	1.1/2 X 1735 AXLE	02 00 00
01A	0511010225	1-1/2" X 68" AXLE	02 00 00
01B	0511022284	1.1/2 X 1735 AXLE	02 00 00
01B.	0501043837	1-1/2" X 68" AXLE WITH NUTS	02 00 00
02	0501024880	1.1/2 X 1965 AXLE	00 02 00
02A	0511010230	1-1/2" X 77" AXLE	00 02 00
02B	0511022285	1.1/2 X 1965 DM AXLE ASSY	00 02 00
02B.	0511010230	1-1/2" X 77" AXLE	00 02 00
03	0511022283	1.1/2 X 2195 AXLE	00 00 02
03A	0511012602	1-1/2" X 86" AXLE	00 00 02
03B	0501024883	1.1/2 X 2195 AXLE	00 00 02
03B.	0501024883	1.1/2 X 2195 AXLE	00 00 02
04	0502010621	8.8" 1-1/2" SPACER	08 10 12
05	0501044315	9" X 1-1/2" OIL BATH BEARING	06 06 06
05.	0501046311	OIL BATH BEARING	06 06 06
06	0602027328	20" X 4 NOTCHED DISC BLADE	08 00 00
07	0602027210	20" X4,5" NOTCHED DISC BLADE	08 00 00
08	0602029416	DR22X4,5 C64AF02FR1.9/16 10REC TATU	08 09 10
09	0602029390	22" X 4 NOTCHED DISC BLADE	00 09 00
10	0602030419	24" X 4,75" NOTCHED DISC BLADE	00 09 10
11	0602030421	24" X 6 NOTCHED DISC	00 00 10
12	0601027291	24" X 4" PLAIN DISC BLADE	08 00 00
13	0601027171	20" X 4,5" NOTCHED DISC BLADE	08 00 00
14	0601029413	DL22X4,5 C64AF02FR1.9/16 TATU	08 09 00
15	0601029390	22" X 4 PLAIN DISC BLADE	00 09 00
16	0601029413	DL22X4,5 C64AF02FR1.9/16 TATU	00 09 00
17	0601031114	24" X 4,75 PLAIN DISC BLADE	00 09 10
18	0601031116	24 X 6 PLAIN DISC	00 00 10
19	0502010871	1-1/2" EXTERNAL AXLE WASHER	02 02 02
20	0502010872	1-1/2" INNER AXLE WASHER	02 02 02
21	0501010110	1.1/2" NUT	04 04 04
22	0501018592	1.5/8" NUT LOCK	04 04 04
23	0501048788	CONJUNTO PCS IMPL 5/8 UNC X 2.1/2 CA	12 12 12

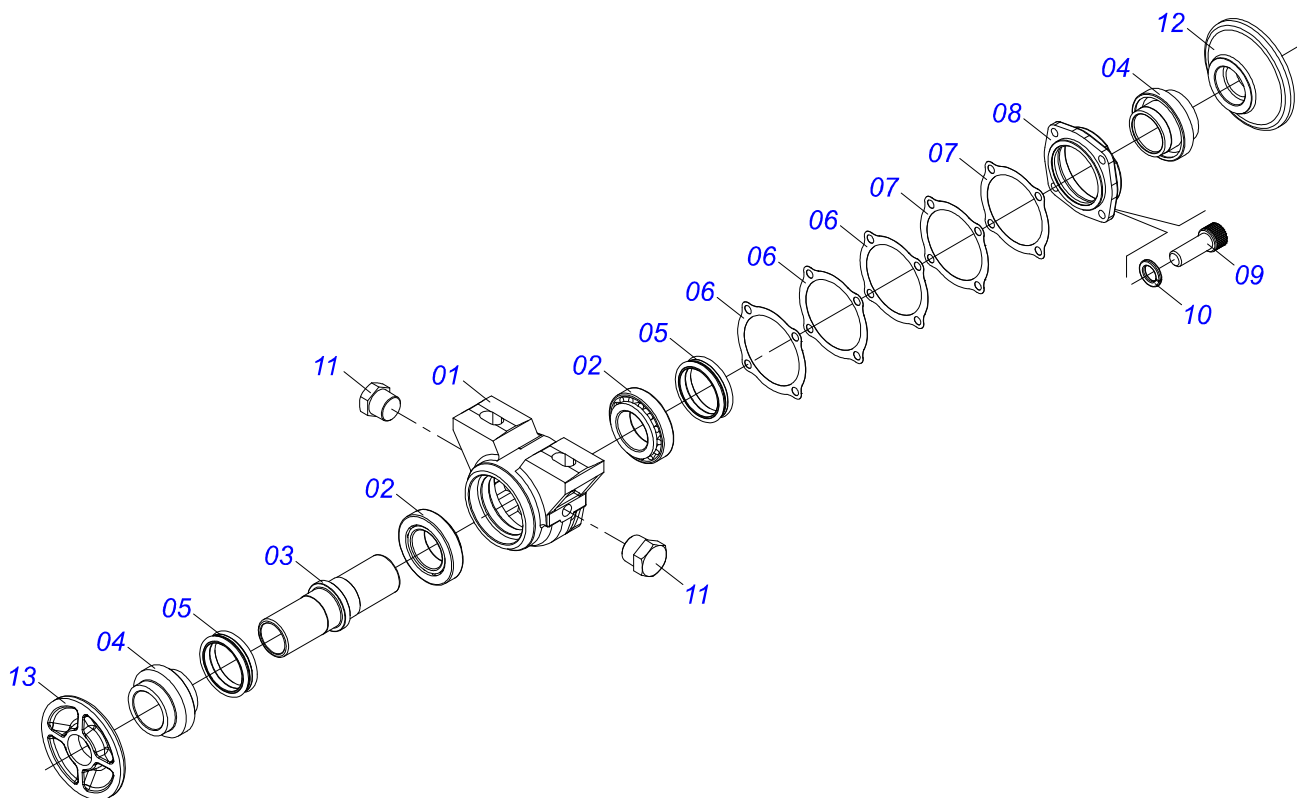


GHD-2 3009  
GANG DISC MT 16 18 20

Item	Code	Description	16 18 20
23A	0501014177	5/8" X 2-1/2" BOLT	12 12 12
23B	0501010947	5/8 NUT LOCK	12 12 12
23C	0501012140	FLAT WASHER	12 12 12
23D	0503010013	5/8" NUT	12 12 12
24	0503011267	5/8" X 1.1/2" BOLT	04 04 04
25	0503010027	SPRING WASHER	04 04 04
26	0501012140	FLAT WASHER	04 04 04
27	0503010013	5/8" NUT	04 04 04

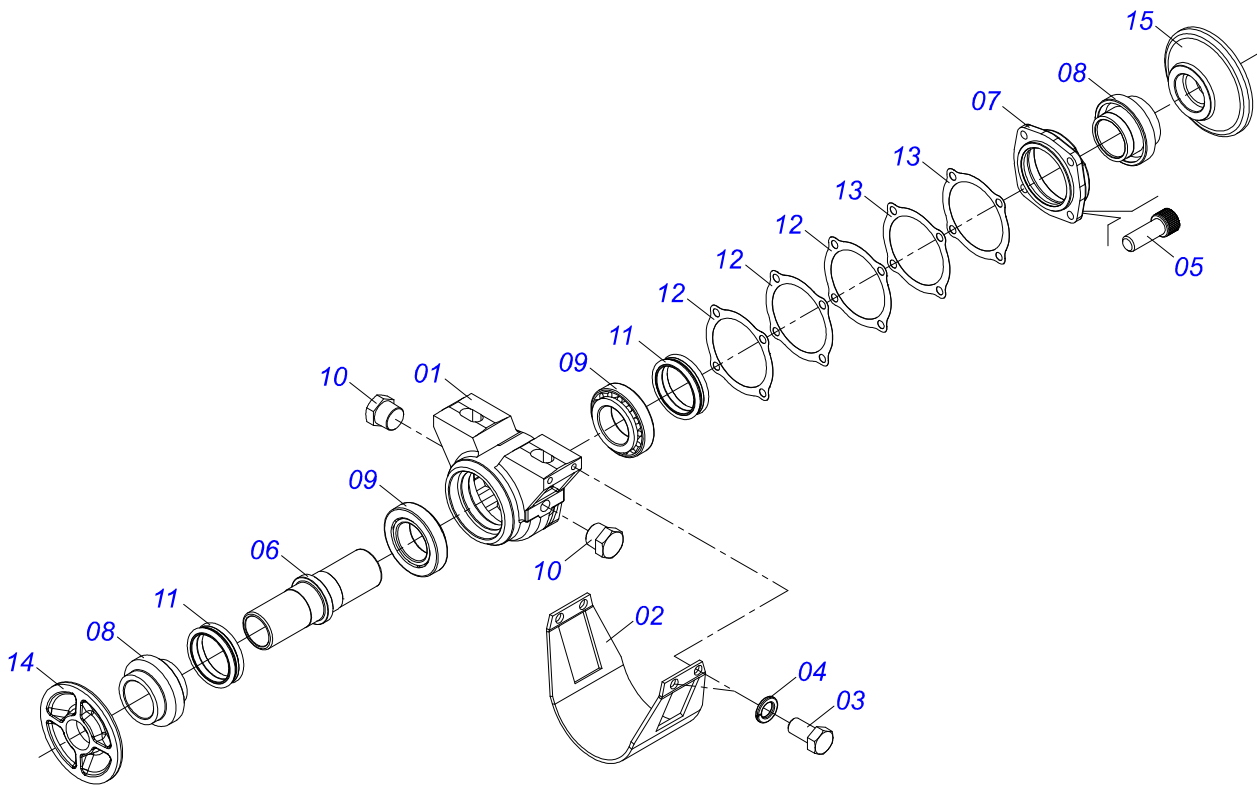


Item	Code	Description	18 20
01	0511022285	1.1/2 X 1965 DM AXLE ASSY	02 00
01A	0511010230	1-1/2" X 77" AXLE	02 00
02	0501043756	1-1/2" X 77" AXLE WITH NUTS	00 02
02A	0511010230	1-1/2" X 77" AXLE	00 02
03	0502010621	8.8" 1-1/2" SPACER	10 12
04	0501044315	9" X 1-1/2" OIL BATH BEARING	06 06
05	0501046311	OIL BATH BEARING	06 06
06	0602030421	24" X 6 NOTCHED DISC	18 20
07	0502010871	1-1/2" EXTERNAL AXLE WASHER	02 02
08	0502010872	1-1/2" INNER AXLE WASHER	02 02
09	0501010110	1.1/2" NUT	04 04
10	0501018592	1.5/8" NUT LOCK	04 04
11	0501048788	CONJUNTO PCS IMPL 5/8 UNC X 2.1/2 CA	12 12
11A	0501014177	5/8" X 2-1/2" BOLT	12 12
11B	0501010947	5/8 NUT LOCK	12 12
11C	0501012140	FLAT WASHER	12 12
11D	0503010013	5/8" NUT	12 12
12	0503011267	5/8" X 1.1/2" BOLT	04 04
13	0503010027	SPRING WASHER	04 04
14	0501012140	FLAT WASHER	04 04
15	0503010013	5/8" NUT	04 04



Item	Code	Description	QT
01	0502010540	HOUSING DM	01
02	0503010006	32210 ROLLER BEARING	02
03	0502040611	AXLE	01
04	0502010821	SEAL RETAINER	02
05	0503030026	SEAL LP JB-253	02
06	0503030013	4.4" X 3.5" X 0.004" JOINT	03
07	0503030684	4.4" X 3.5" X 0.004" JOINT	02
08	0502020424	HOUSING CAP DM	01
09	0503010134	3/8" X 1" BOLT	04
10	0503011443	SPRING WASHER	04
11	0503010856	OIL PLUG	02
12	0502010604	OUTER FLANGE	01
13	0502010605	INNER FLANGE	01





Item	Code	Description	QT
01	0502011751	OIL HOUSING BEARING	01
02	0511010829	BEARING GUARD	01
03	0503011334	3/8" X 3/4" BOLT	04
04	0503010025	3/8 SPRING WASHER	04
05	0503010134	3/8" X 1" BOLT	04
06	0502040611	AXLE	01
07	0502020424	HOUSING CAP DM	01
08	0502010821	SEAL RETAINER	02
09	0503010006	32210 ROLLER BEARING	02
10	0503010856	OIL PLUG	02
11	0503030026	SEAL LP JB-253	02
12	0503030013	4.4" X 3.5" X 0.004" JOINT	03
13	0503030684	4.4" X 3.5" X 0.004" JOINT	02
14	0502010605	INNER FLANGE	01
15	0502010604	OUTER FLANGE	01





**MARCHESAN IMPLEMENTOS E MÁQUINAS AGRÍCOLAS TATU S.A.**

AV. Marchesan, 1979 - Post office box, 131 - CEP 15994-900 - Matão - SP - Brazil

Phone +55 16.3382-8282

(FAX Parts) + 55 16.3382. 8297 - (Export) + 55 16.3382.1003

e.mail: [tatu@marchesan.com.br](mailto:tatu@marchesan.com.br) [www.marchesan.com.br](http://www.marchesan.com.br)

**Technical Publications: Elaboration**

LUIZ CANDIDO

**Technical Publications: Revision**

MARINA PEREZ NIZA

*Contact Catálogo:*

*E-mail = [jgaspari@marchesan.com.br](mailto:jgaspari@marchesan.com.br)*

**ORIGINAL PARTS  
TATU**

