

CATÁLOGO DE PEÇAS

DISTRIBUIDORES

DCA 5500 LA CP EI

Código: 0501091181



Série: S-0405

Revisão: MARÇO/2015

**PEÇAS ORIGINAIS
TATU**



PRODUTOS

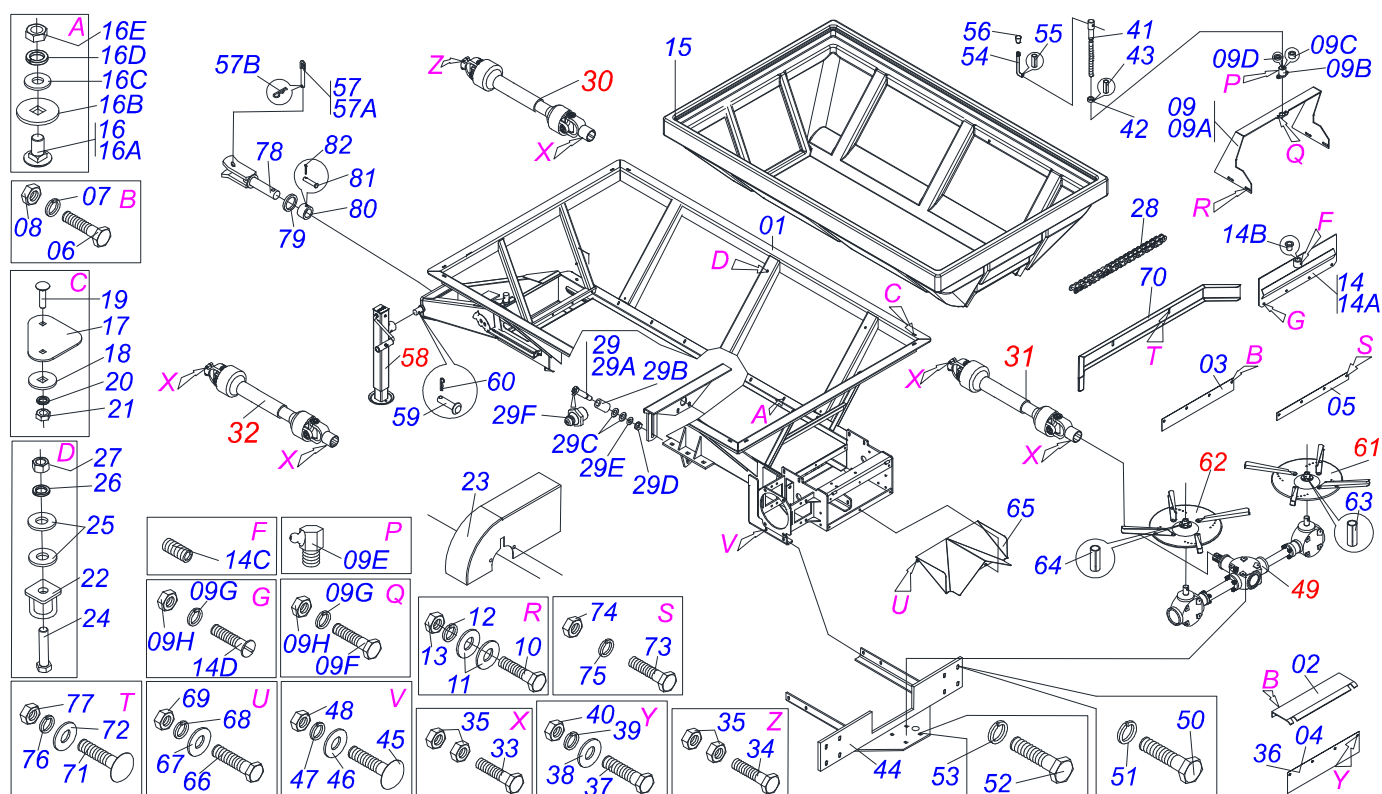
Código	Descrição
0109090074	DCA 5500-LA S-0405
0109090073	DCA 5500-LA-CP S-0405
0109090089	DCA 5500-LA-CP EI PN11L15 S-0405
0109090157	DCA 5500-LA-CP ESTEIRA INOX S-0405
0109090131	DCA 5500-LA-CP PN11L15 S-0405

ATENÇÃO: IMPORTANTE

A MARCHESAN S/A RESERVA O DIREITO DE APERFEIÇOAR E/ OU ALTERAR AS CARACTERÍSTICAS TÉCNICAS DE SEUS PRODUTOS, SEM A OBRIGAÇÃO DE ASSIM PROCEDER COM OS JÁ COMERCIALIZADOS E SEM CONHECIMENTO PRÉVIO DA REVENDA OU DO CONSUMIDOR.

INDICE

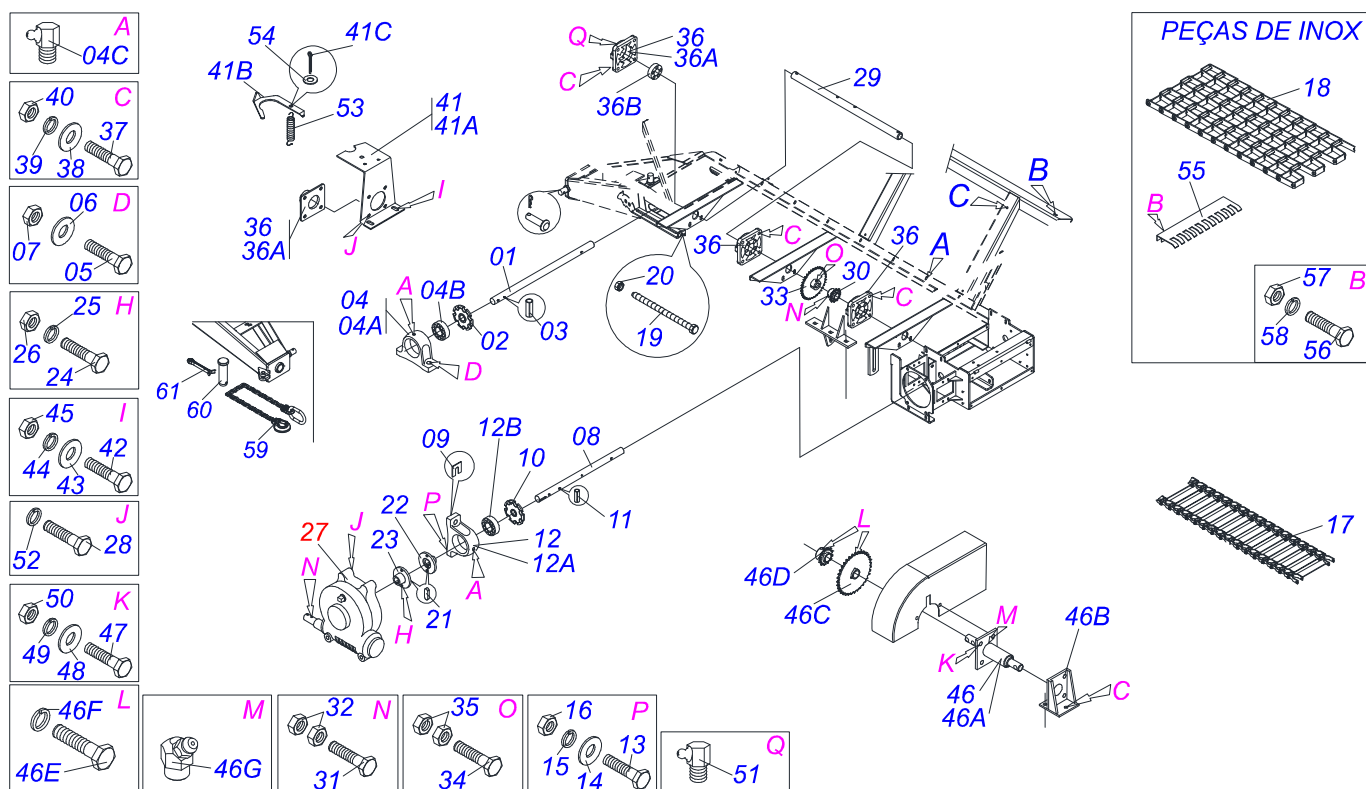
0909090664	CONJUNTO TRASEIRO DCA 5500-LA-CP-EI	1
0909090665	CONJUNTO DIANTEIRO DCA 5500-LA-CP-EI	2
0909090666	SISTEMA DE RODAGEM DCA 5500 LA-CP-EI S/0405	3
0511043844	CARDAN 20 X 650 T1/T4 CC1000/23P	4
0503062211	MULTIPLIC TRIPLO BPN 2020/2030 DCA2	5
0501048241	CARDAN 40X 400 T1/T9 C/P CC2030/1P	6
0501046805	CARDAN 20X 500 T4/T4 C/P CC1020/1P	7
0503062157	MACACO COMPLETO (1259) ROBUSTEC	8
0501056350	DISCO DISTRIB DIR COMPL DCA CP 5500	9
0501056349	DISCO DISTRIB ESQ COMPL DCA CP 5500	10
0501047985	RED SEM FIM DCA2 5500 MC	11
0501051142	CX RODADO C/ROL DCA S-0996	12
0503060181	RODA C/PNEU 11L-15 10L 6F COMPL	13



Item	Código	Descrição	QT
001	0511066709	CHASSI DCA 5500-LA-CP S-0405	01
002	0501067379	PROT TRAS ESTEIRA DCA2	01
003	0511014562	PROT MENOR 555 X 80 X 2,30 DCA2	01
004	0511011866	PROT MAIOR 555 X 180 X 2,30 DCA2	01
005	0511016575	FIXD MANTA BORRACHA DCA2 5500	02
006	0503010237	PARAF 3/8 UNC X 1 C S G.5 ZN	07
007	0503011443	ARRUELA PRESSAO 3/8 SA	07
008	0503010026	PORCA S. 3/8 UNC G.5 ZN	07
009	0501054846	SUPT COMPORTA COMPL DCA2 10500	01
009A	0501069841	SUPT COMPORTA DCA2 5500 MC	01
009B	0502010581	MANCAL VARAO COMPORTA DCA2	01
009C	0521010457	LUVA 25,3 X 31,7 X 17 DCA2 1G139051	01
009D	0521010458	LUVA 25,3 X 31,70 X 10 DCA2	01
009E	0503010004	GRAXEIRA 1890 3/8 (1/8 BSP)	03
009F	0503010358	PARAF 5/16 UNC X 7/8 C S G.5 ZN	02
009G	0503011444	ARRUELA PRESSAO 5/16 SA	06
009H	0503010337	PORCA S. 5/16 UNC G.5 ZN	06
010	0503010751	PARAF 3/8 UNC X 1.1/4 C S G.5 ZN	04
011	0501010984	ARRUELA LISA 10,50 X 27 X 3,00 ZN	08
012	0503011443	ARRUELA PRESSAO 3/8 SA	04
013	0503010026	PORCA S. 3/8 UNC G.5 ZN	04
014	0501054847	TAMPA COMPORTA COMPL DCA2 10500	01
014A	0501069181	TAMPA COMPORTA DCA2	01
014B	0501019831	PORCA REGULADORA DCA2 5500	01
014C	0503011148	PARAF 3/8 UNC X 1/2 S C S I 12.9	01
014D	0503010546	PARAF 5/16UNCX7/8 CE PHILLIPS G5 ZN	04
015	0503032119	CAIXA ADUBO DCA2 DC 5500	01
016	0511049955	CONJ FIX CX PLATICA DCA5500 LA CP	14
016A	0503013755	PARAF 3/8 UNC X 3/4 CAPQ INOX	14
016B	0571010026	ARRUELA LISA 45XFQ10X3 INOX DCA5500	14
016C	0503012546	ARRUELA LISA 10,50 X 27 X 3,00 INOX	14
016D	0503012535	ARRUELA PRESSAO 3/8 INOX 1K01872	14
016E	0503012531	PORCA 3/8 UNC SEXT INOX	14

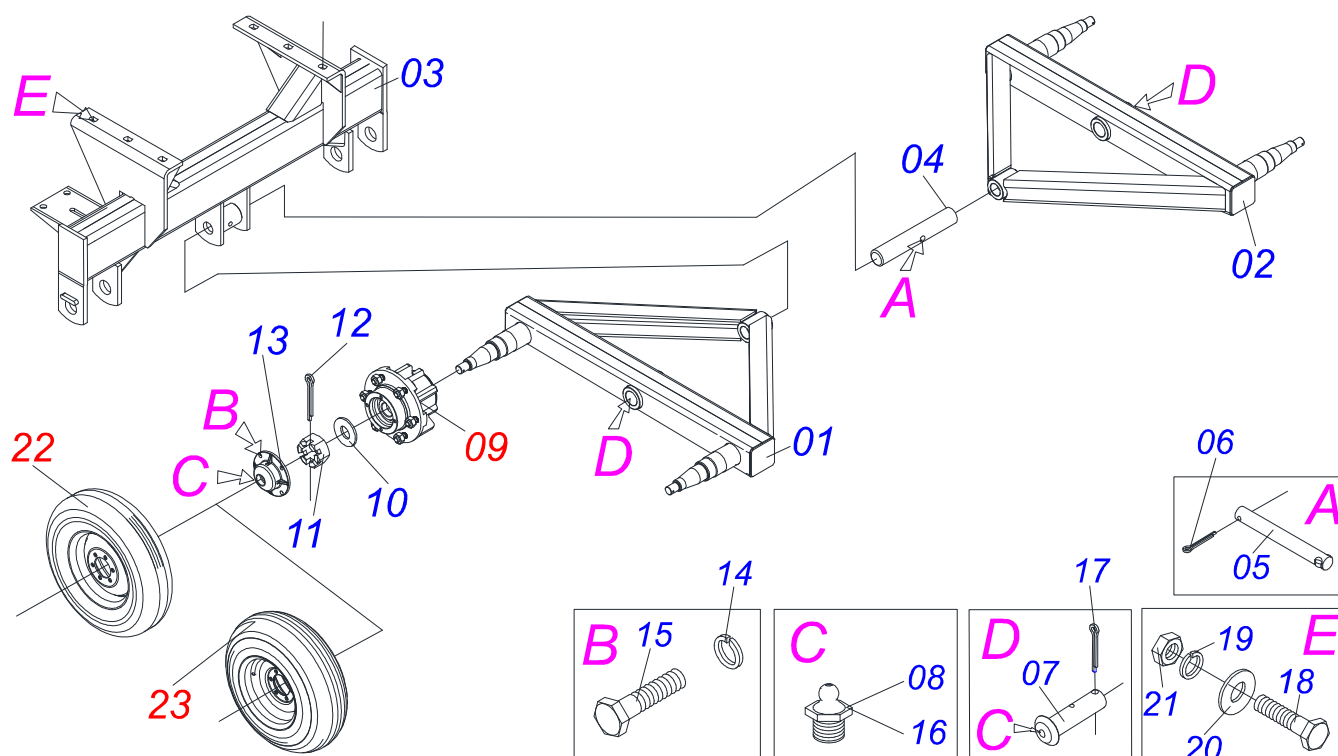
Item	Código	Descrição	QT
017	0541017364	FIXD LAT CX PLAST DCA CP 5500	04
018	0541015706	ARRUELA LISA Q9,70 X 50 X 4,00 INOX	06
019	0503012541	PARAF 3/8 UNC X 1.1/2 CAPQ INOX	14
020	0503012535	ARRUELA PRESSAO 3/8 INOX 1K01872	14
021	0503012531	PORCA 3/8 UNC SEXT INOX	14
022	0511066716	SUPORTE TRANSPORTE DCA CP 5500	06
023	0511061156	CAPA PROT DCA2 RD	01
024	0503010899	PARAF 5/8 UNC X 2.1/4 C S G.5 ZN	06
025	0501012140	ARRUELA LISA 16,50 X 40 X 4,00 ZN	12
026	0503010027	ARRUELA PRESSAO 5/8 ZN 1K01574	06
027	0503010013	PORCA S. 5/8 UNC G.5 ZN	06
028	0503013003	CORR 50-1X79ELOS+EM+10ELOS+RD DCA2	01
029	0501050828	ESTIC CORR MAIOR DCA2 5500 MC	01
029A	0521010640	EIXO JUNCAO ESTIC DCA2	01
029B	0511016554	ROLD ESTIC DCA2	02
029C	0501010301	ARRUELA LISA 16 X 29,50 X 3,00 ZN	02
029D	0503010013	PORCA S. 5/8 UNC G.5 ZN	01
029E	0511015098	ARRUELA LISA 19 X 30 X 0,50 ZN	01
029F	0503010002	GRAXEIRA 1800	01
030	0511043844	CARDAN 20 X 650 T1/T4 CC1000/23P	01
031	0501048241	CARDAN 40X 400 T1/T9 C/P CC2030/1P	01
032	0501046805	CARDAN 20X 500 T4/T4 C/P CC1020/1P	01
033	0503011268	PARAF 3/8 UNC X 2.1/2 C S G.5 ZN	05
034	0503010765	PARAF 3/8 UNC X 3 C S G.5 ZN	01
035	0503010026	PORCA S. 3/8 UNC G.5 ZN	12
036	0501019460	PROT TRAS DCA2	01
037	0503010237	PARAF 3/8 UNC X 1 C S G.5 ZN	05
038	0501010984	ARRUELA LISA 10,50 X 27 X 3,00 ZN	05
039	0503010025	ARRUELA PRESSAO 3/8 ZN 1K01527	05
040	0503010026	PORCA S. 3/8 UNC G.5 ZN	05
041	0561014861	REGULADOR DCA2	01
042	0511013015	LUVA 1" X 35 X 13 DCA2	01
043	0503010561	PINO ELAST 701163 6 X 36	01
044	0511066647	SUPT FIXACAO REDUTOR DCA CP 5500 RD	01
045	0503014378	PARAF 1/2 UNC X 1.1/2 CAPQ G.5 ZN	04
046	0501012803	ARRUELA LISA 12 X 30 X 3,00 ZN	04
047	0503011440	ARRUELA PRESSAO 1/2 SA	04
048	0503010060	PORCA S. 1/2 UNC G.5 ZN	04
049	0503062211	MULTIPLIC TRIPLO BPN 2020/2030 DCA2	01
050	0503010188	PARAF M10 X 1,5 X 30 C S 5.6 ZN	08
051	0503011443	ARRUELA PRESSAO 3/8 SA	08
052	0503010428	PARAF M12 X 1,75 X 30 C S 8.8 ZN	04
053	0503011440	ARRUELA PRESSAO 1/2 SA	04
054	0521011107	CORPO MANIVELA DCA2 S-0398	01
055	0503010838	PINO ELAST 701060 3 X 20	01
056	0503030878	MANIPULO ALAVANCA	01
057	0501047881	EIXO JUNCAO COMPL PST2	01
057A	0501068989	EIXO JUNCAO PST/PDC ZN	01
057B	0503031035	CUPILHA 6 X 88	01
058	0503062157	MACACO COMPLETO (1259) ROBUSTEC	01
059	0521010549	EIXO JUNCAO 12,70X60 CA GT M1120 ZN	01
060	0503030168	CUPILHA 3 X 50 SDA 11/6	01
061	0501056350	DISCO DISTRIB DIR COMPL DCA CP 5500	01
062	0501056349	DISCO DISTRIB ESQ COMPL DCA CP 5500	01
063	0503010361	PINO ELAST 701221 10 X 60	02
064	0503010756	PINO ELAST 701168 6 X 60	02
065	0511066728	DIVISOR FLUXO DCA 5500-CP-LA	01
066	0503011268	PARAF 3/8 UNC X 2.1/2 C S G.5 ZN	02
067	0501010984	ARRUELA LISA 10,50 X 27 X 3,00 ZN	02
068	0503010025	ARRUELA PRESSAO 3/8 ZN 1K01527	02
069	0503010026	PORCA S. 3/8 UNC G.5 ZN	02
070	0541016988	PARACHOQUE DCA CP 5500 RD	01

Item	Código	Descrição	QT
071	0501011643	PARAF 3/8 UNC X 1 C A PQ G.2 ZN	02
072	0501010984	ARRUELA LISA 10,50 X 27 X 3,00 ZN	02
073	0503014175	PARAF 3/8 UNC X 1.1/2 CS INOX	04
074	0503012531	PORCA 3/8 UNC SEXT INOX	04
075	0503012535	ARRUELA PRESSAO 3/8 INOX 1K01872	04
076	0503011443	ARRUELA PRESSAO 3/8 SA	02
077	0503010026	PORCA S. 3/8 UNC G.5 ZN	02
078	0501069166	ENG TRATOR DCA2 5500 MC	01
079	0521015342	ARRUELA ESPAC 53 X 76 X2,00 DCA2	01
080	0521010681	CORPO LUVA ENG TRATOR DCA2	01
081	0521010639	EIXO JUNCAO 20,30/20,20 X 90 DCA SA	01
082	0503010571	CONTRAPINO 1/4 X 1.1/2	01

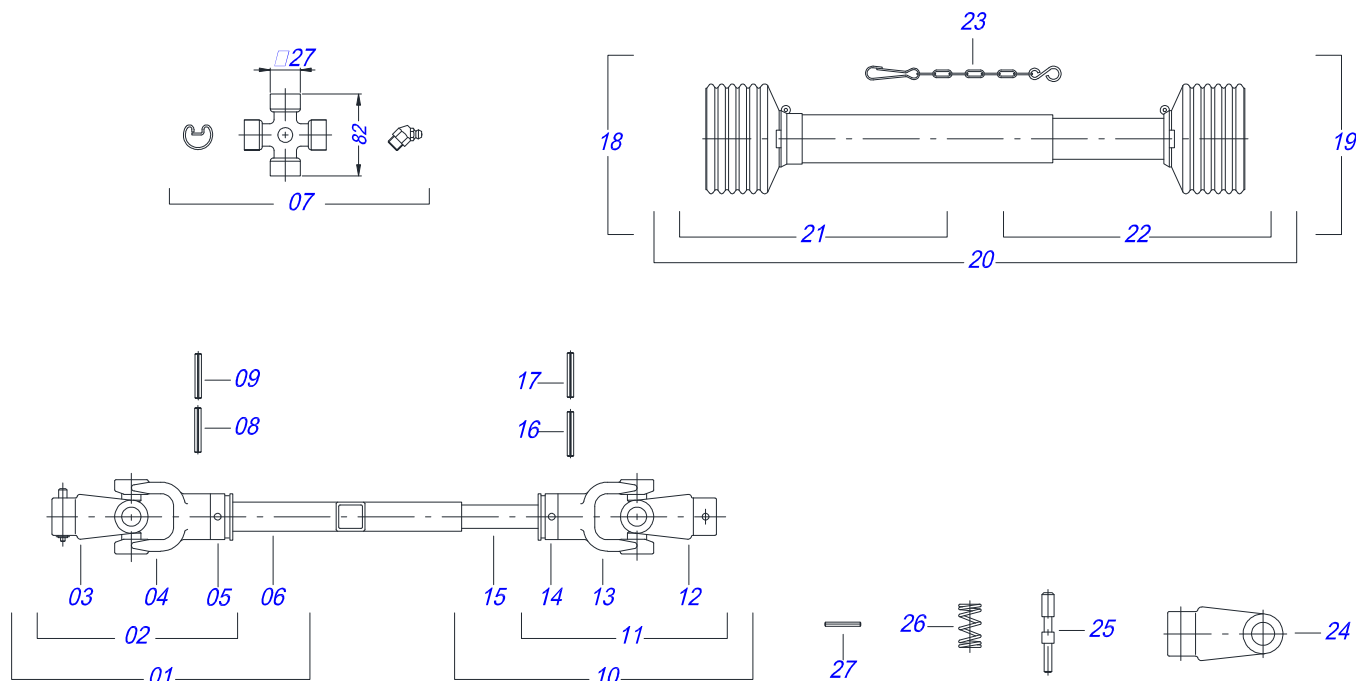


Item	Código	Descrição	QT
01	0511016482	EIXO MOVIDO DCA2	01
02	0502040728	ENGR 7Z P 57,15 FR1.1/2 DCA2	02
03	0503010361	PINO ELAST 701221 10 X 60	02
04	0501044308	MANCAL AGR PEDT P-208 COMPL	02
04A	0502011050	CX MANCAL AGR P-208 DCA2	02
04B	0503011163	ROL AUT COMP GY 1108/UCR 208-24	02
04C	0503010004	GRAXEIRA 1890 3/8 (1/8 BSP)	02
05	0503010899	PARAF 5/8 UNC X 2.1/4 C S G.5 ZN	04
06	0501012140	ARRUELA LISA 16,50 X 40 X 4,00 ZN	08
07	0503010013	PORCA S. 5/8 UNC G.5 ZN	04
08	0511016481	EIXO MOTOR DCA2	01
09	0501010794	CALCO REG LEV HIDR 3P ZN	04
10	0502040728	ENGR 7Z P 57,15 FR1.1/2 DCA2	02
11	0503010361	PINO ELAST 701221 10 X 60	02
12	0501044308	MANCAL AGR PEDT P-208 COMPL	02
12A	0502011050	CX MANCAL AGR P-208 DCA2	02
12B	0503011163	ROL AUT COMP GY 1108/UCR 208-24	02
12C	0503010004	GRAXEIRA 1890 3/8 (1/8 BSP)	02
13	0503010740	PARAF 1/2 UNC X 2 C S G.5 ZN	04
14	0511017302	ARRUELA LISA 13,50 X 32,50 X 3,0 ZN	04
15	0503011440	ARRUELA PRESSAO 1/2 SA	04
16	0503010060	PORCA S. 1/2 UNC G.5 ZN	04
17	0501067591	EST TRANSP ADB TAL DCA2 5500 S-0398	01
18	0511048904	EST TRANSP A/C 5260 INOX DCA2 5500	01
19	0501067853	VARAO ESTIC DCA2	02
20	0503010013	PORCA S. 5/8 UNC G.5 ZN	02
21	0501010540	CHAVETA Q 9,52 X 57	02
22	0511016540	FLANGE ACOPL ESTEIRA DCA2 5500RD	01
23	0511016541	FLANGE ACOPL REDUT DCA2 5500RD	01
24	0503010849	PARAF 3/8 UNC X 1.1/2 C S G.5 ZN	02
25	0503011443	ARRUELA PRESSAO 3/8 SA	02
26	0503010026	PORCA S. 3/8 UNC G.5 ZN	02
27	0501047985	RED SEM FIM DCA2 5500 MC	01

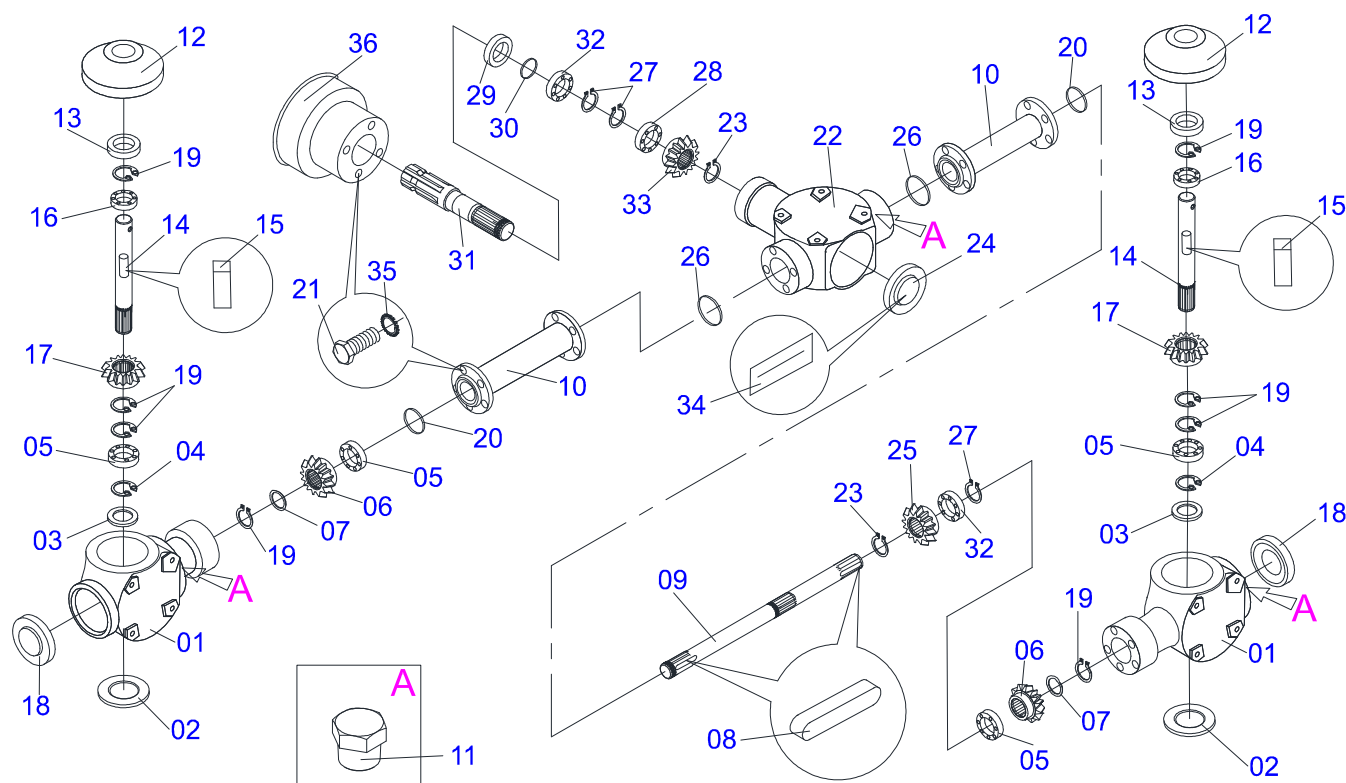
Item	Código	Descrição	QT
28	0503011167	PARAF M16 X 2 X 30 C S 10.9 ZN	04
29	0521011936	EIXO TRANSM 2260 DCA2 5500 RD S-398	01
30	0501069017	ENGR 12Z P15,87 DCA2 5500 MC	01
31	0503011268	PARAF 3/8 UNC X 2.1/2 C S G.5 ZN	01
32	0503010026	PORCA S. 3/8 UNC G.5 ZN	01
33	0501069020	ENGR 35Z P15,87 DCA2 5500 MC	02
34	0503011268	PARAF 3/8 UNC X 2.1/2 C S G.5 ZN	01
35	0503010026	PORCA S. 3/8 UNC G.5 ZN	01
36	0501044306	MANCAL AGR F RCJY 30/SF 30 COMPL	03
36A	0503011146	CX MANCAL AGR F-206	03
36B	0503011162	ROL AUTOE ESF UCR 206	03
37	0503011135	PARAF 7/16 UNC X 1.1/2 C S G.5 ZN	12
38	0501012803	ARRUELA LISA 12 X 30 X 3,00 ZN	08
39	0503011446	ARRUELA PRESSAO 7/16 SA	12
40	0503010244	PORCA S. 7/16 UNC G.5 ZN	12
41	0501056885	SUPT SUST CARDAN S/MOLA DCA2 5500	01
41A	0501066588	SUSTENTACAO CARDAN MAIOR DCA2 5500MC	01
41B	0511014066	SUST CARDAN MENOR DCA2	01
41C	0503010257	CONTRAPINO 1/8 X 1 SA 1G13310	01
42	0503010920	PARAF 1/2 UNC X 1.1/2 C S G.5 ZN	02
43	0511017302	ARRUELA LISA 13,50 X 32,50 X 3,0 ZN	02
44	0503011440	ARRUELA PRESSAO 1/2 SA	02
45	0503010060	PORCA S. 1/2 UNC G.5 ZN	02
46	0501047359	CUBO TRANSM CARDAN COMPL DCA2	01
46A	0501046852	CUBO TRANSM CARDAN DCA2	01
46B	0501067586	SUPT CUBO TRANSM DCA2	01
46C	0501069020	ENGR 35Z P15,87 DCA2 5500 MC	02
46D	0501069017	ENGR 12Z P15,87 DCA2 5500 MC	01
46E	0503011268	PARAF 3/8 UNC X 2.1/2 C S G.5 ZN	02
46F	0503010026	PORCA S. 3/8 UNC G.5 ZN	04
46G	0503010003	GRAXEIRA 1845 3/8	01
46H	0501012803	ARRUELA LISA 12 X 30 X 3,00 ZN	01
47	0503011135	PARAF 7/16 UNC X 1.1/2 C S G.5 ZN	04
48	0501012803	ARRUELA LISA 12 X 30 X 3,00 ZN	03
49	0503011446	ARRUELA PRESSAO 7/16 SA	03
50	0503010244	PORCA S. 7/16 UNC G.5 ZN	03
51	0503011098	GRAXEIRA 1890 1/4 1G87090	04
52	0503011445	ARRUELA PRESSAO 5/8 SA	16
53	0503030198	MOLA TRAC 14,5 X 61,5 X 1,5 GALV.	01
54	0503010571	CONTRAPINO 1/4 X 1.1/2	01
55	0501068211	PROT TRAS ESTEIRA INOX DCA2 EI	01
56	0503014175	PARAF 3/8 UNC X 1.1/2 CS INOX	04
57	0503012531	PORCA 3/8 UNC SEXT INOX	04
58	0503012535	ARRUELA PRESSAO 3/8 INOX 1K01872	04
59	0503013150	CORR SEG 1300 X 3/8 C/GANCHO/ARGOLA	01
60	0581011220	EIXO JUNCAO 22,30 X 28,58 X 61 DCA2/DCCO	01
61	0503010131	CONTRAPINO 3/16 X 1.1/2	01



Item	Código	Descrição	QT
000	0501047998	SUPT FIX BAL COMPL DCA2 5500	01
001	0501069182	BAL DIR DCA2 S-0398	01
002	0501069183	BAL ESQ DCA2 S-0398	01
003	0501066174	SUPT FIX BALANCIM DCA2 5500 MC S398	01
004	0521011118	EIXO JUNCAO 38,10 X 250 DCA2 SA	01
005	0521010641	EIXO JUNCAO FIXD MOLA PST2 ZN	01
006	0503010297	CONTRAPINO 5/32 X 1.1/4	01
007	0521010956	EIXO ARTIC 37,50X165 P/GRAX DCA2 ZN	02
008	0503010002	GRAXEIRA 1800	03
009	0501051142	CX RODADO C/ROL DCA S-0996	04
010	0501016545	ARRUELA LISA 26 X 50 X 6,30 ZN	04
011	0503030009	PORCA CAST 1 UNS 14FPP X 22 ZN	04
012	0503010131	CONTRAPINO 3/16 X 1.1/2	04
013	0502020591	TAMPA PROT 1G72673 PSA	04
014	0503011444	ARRUELA PRESSAO 5/16 SA	16
015	0503010358	PARAF 5/16 UNC X 7/8 C S G.5 ZN	16
016	0503010002	GRAXEIRA 1800	04
017	0503010534	CONTRAPINO 3/8 X 2.1/2 ZN 1G13300	02
018	0503012808	PARAF 1/2UNCX1.1/2 CS INOX 1K05068	06
019	0503012536	ARRUELA PRESSAO 1/2 INOX	06
020	0503012546	ARRUELA LISA 10,50 X 27 X 3,00 INOX	06
021	0503012532	PORCA 1/2 UNC SEXT INOX 1K03409	06
022	0503060181	RODA C/PNEU 11L-15 10L 6F COMPL	04
023	0503060206	RODA C/ PNEU 750 X 16-10L COMP DCA2	04



Item	Código	Descrição	QT
00	0511043844	CARDAN 20 X 650 T1/T4 CC1000/23P	01
01	0501056398	JUNTA UNI T1-20/T2-20 C/LUVA 650	01
02	0501056399	JUNTA UNI T3-20/T4-20 C/EIXO 650	01
03	0502010562	TERM 3-20 C/ FQ 22,05/22,10 CC11	01
04	0502010558	TERM 4-20 C/ F 30 CC13	01
05	0503012069	ADAPT P/ PROT LUVA CCB21	01
06	0541017359	LUVA Q22,50/22,80 X 28,63/28,53X650	01
07	0503010835	CRUZETA CARDAN CC-04	01
08	0503010842	PINO ELAST 701224 10 X 75	01
09	0503010301	PINO ELAST 701191 8 X 45	01
10	0501050263	JUNTA UNI T1-20/T2-20 CC 100412	01
11	0501050264	JUNTA UNI T3-20/T4-20 CC 110413	01
12	0502010562	TERM 3-20 C/ FQ 22,05/22,10 CC11	01
13	0502010558	TERM 4-20 C/ F 30 CC13	01
14	0503012070	ADAPT P/ PROT EIXO CCB22	01
15	0541017360	EIXO Q 22,10/22,23 X 650	01
16	0503010361	PINO ELAST 701221 10 X 60	01
17	0503010756	PINO ELAST 701168 6 X 60	01
18	0501050262	JUNTA UNI T3-60/T4-60 C/EIXO 500	01
19	0501050264	JUNTA UNI T3-20/T4-20 CC 110413	01
20	0503012277	PROT COMPL CCP 2030/1	01
21	0503012278	PROT PLAST P/JUNTA UNI LUVA	01
22	0503012279	PROT PLAST P/JUNTA UNI EIXO	01
23	0503012023	CORRENTE P/PROT JUNTA UNIVERSAL	01
24	0502010563	TERM 1-40 ENT 1.3/8 CC20	01
25	0521010638	EIXO JUNCAO ENG RAP 13,20 X 83 RC	01
26	0503030518	MOLA COMPR 13 X 25 X 1,2	01
27	0503010838	PINO ELAST 701060 3 X 20	01



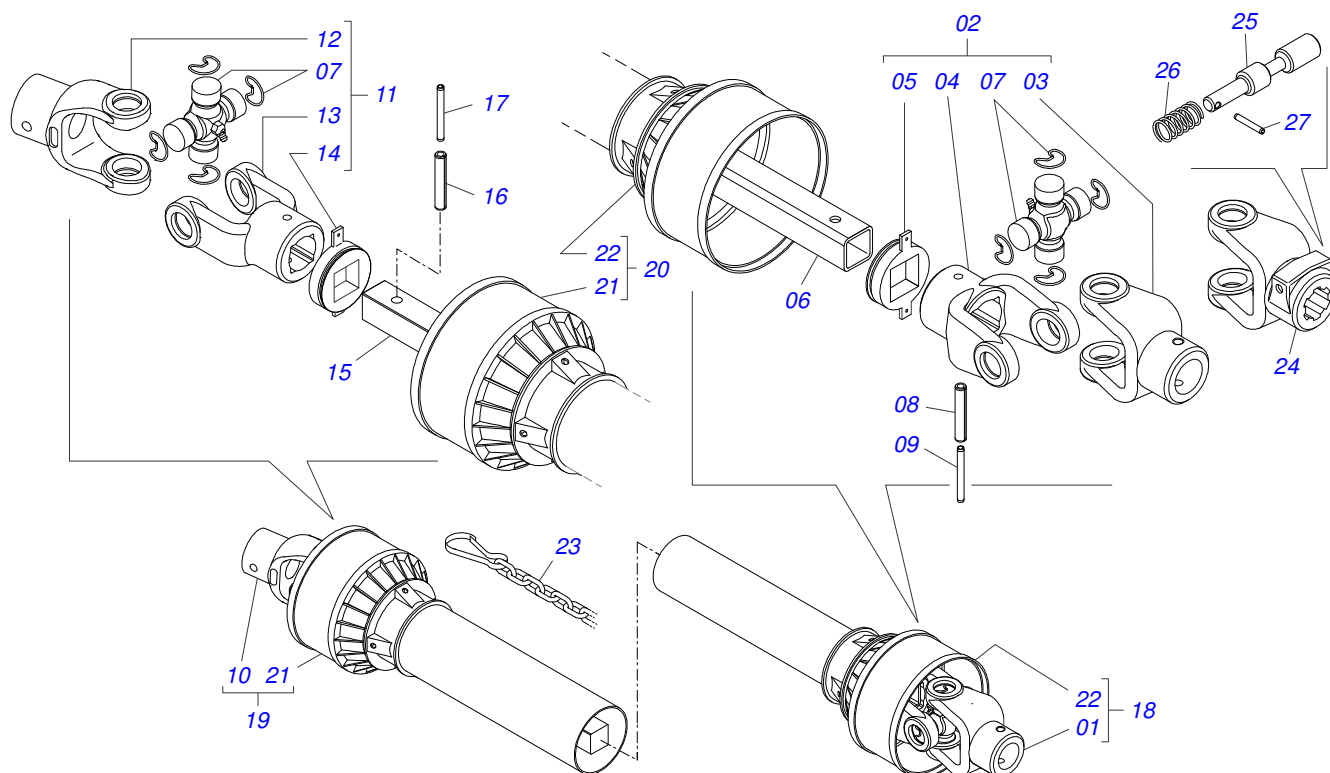
Item	Código	Descrição	QT
000	0503062211	MULTIPLIC TRIPLO BPN 2020/2030 DCA2	01
001	0503016785	CARCACA USIN CX 2020 290220107	02
002	0503016786	TAMPA VULCANIZ 62 X 10 372004000	02
003	0503016787	ANEL ESPAC 340055000	02
004	0503016788	ANEL ELAST I 62 X 2 337002	06
005	0503016789	ROL ESFERAS 6206 354007	04
006	0503016790	ENGR CON Z23 291236201	02
007	0503016791	ANEL ESPAC 340030000	02
008	0503016792	B 8 X 7 X 22 (CHAVETA) 370007000	02
009	0503016793	EIXO CENTRAL 295034	01
010	0503016794	TUBO PROLONG 580016	02
011	0503016795	BUJAO 3/8 373010000	09
012	0503016796	DEFL PO BORR 298056	02
013	0503016797	RETENTOR 30 X 62 X 10 355003030	02
014	0503016798	EIXO SAIDA 295033	02
015	0503016799	CHAVETA 8 X 7 X 18 370004000	02
016	0503016800	ROL CON 30206 354009	04
017	0503016820	ENGR CON Z17 291176201	02
018	0503016801	TAMPA FECHAM 298609400	02
019	0503016802	ANEL ELAST E30 X 2,00 339000030	08
020	0503016803	ORING 56,82 X 2,62 358025000	02
021	0503016804	PARAF SEXT INT M8X25X1,25 303002400	20
022	0503016805	CARCACA CAIXA 2030 290230022	01
023	0503016806	ANEL ELAST E40 X 2,5 339001040	01
024	0503016807	TAMPA SUP 298611000	01
025	0503016808	ENGR CON Z19 291016	01
026	0503016809	ORING 66,34 X 2,62 298017	02
027	0503016810	ANEL ELAST I72 X 2,50 338000072	03
028	0503016811	ROL 30207 354401035	01
029	0503016812	RETENTOR 35/72 X 10 355016035	02
030	0503016813	CALCO 340035006	01
031	0503016814	EIXO ENTRADA 295034051	01
032	0503016815	ROL 6207 354101035	02



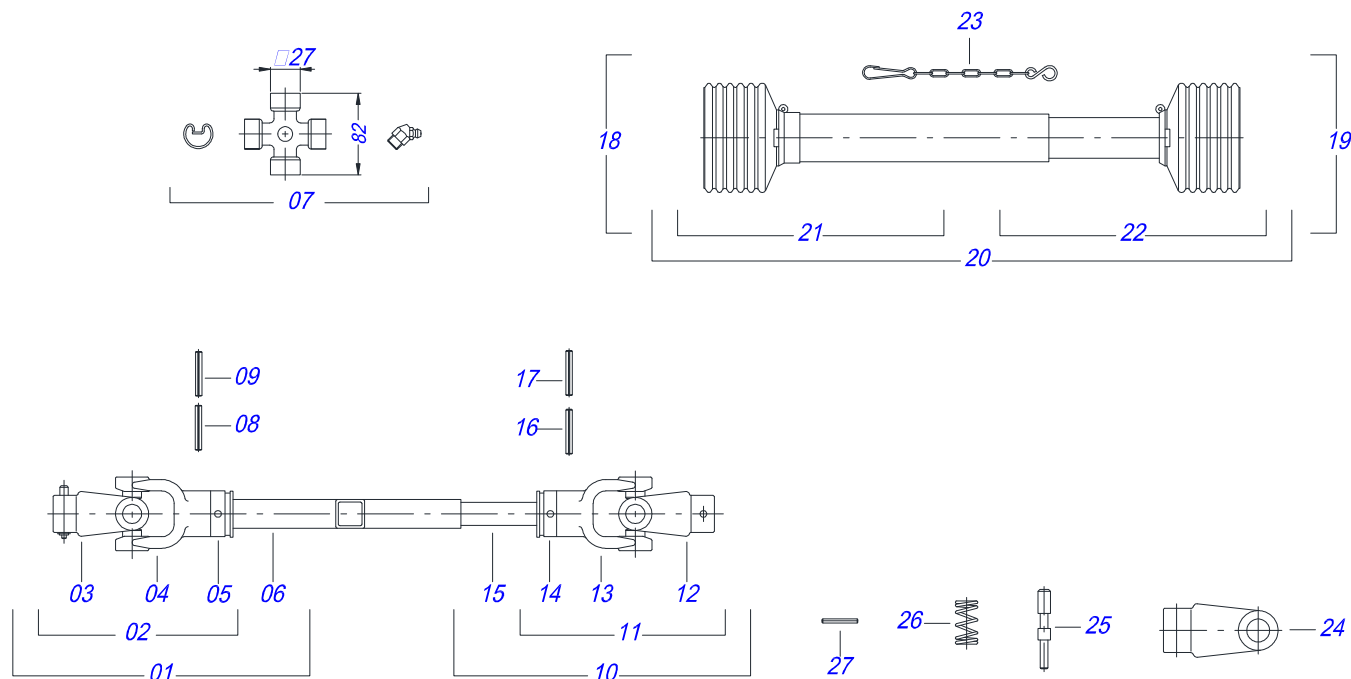
DCA 5500 LA CP EI
MULTIPLIC TRIPLO BPN 2020/2030 DCA2

Página 5
0503062211

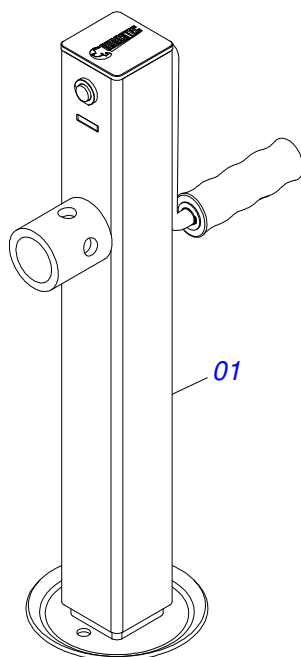
Item	Código	Descrição	QT
033	0503016816	ENGR CON Z17 291017	01
034	0503016817	PLAQUETA IDENT 500001	01
035	0503016818	ARRUELA TRAVA S8 336008001	20
036	0503016819	CONE 21901	01



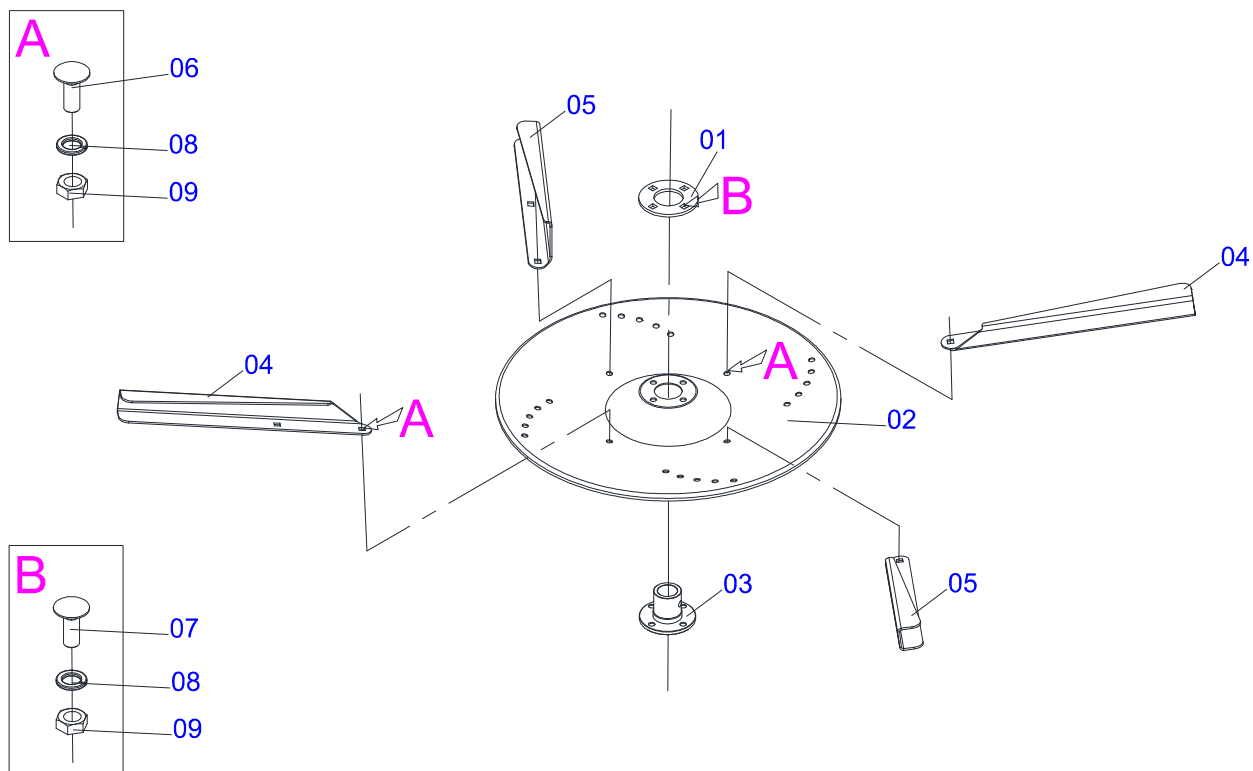
Item	Código	Descrição	QT
01	0501052176	JUNTA UNI T1-40/T2-40 C/LUVA 400	01
02	0501050265	JUNTA UNI T1-40/T2-40 CC 203621	01
03	0501050333	TERM 1-40 C/ ENG RAP CC20 RO	01
04	0502010565	TERM 2-40 C/ FQ 36,75/36,80 CC-21	01
05	0503012069	ADAPT P/ PROT LUVA CCB21	01
06	0521013800	LUVA Q36,8/36,9X30,3/30,4X400 CC28A	01
07	0503010836	CRUZETA CARDAN CC-36 1G35351	02
08	0503011069	PINO ELAST 701223 10 X 70	01
09	0503010510	PINO ELAST 701169 6 X 65	01
10	0501052177	JUNTA UNI T3-40/T9-40 C/EIXO 400	01
11	0501052178	JUNTA UNI T3-40/T9-40 CC2236202	01
12	0502011611	TERM 9-40 C/FURO 30,3 C/CANAL CC202	01
13	0502010566	TERM 3-40 C/ FQ 29,95/30,00 CC-22	01
14	0503012070	ADAPT P/ PROT EIXO CCB22	01
15	0521013801	EIXO Q 30,16 X 400 CC-29A	01
16	0503010361	PINO ELAST 701221 10 X 60	01
17	0503010756	PINO ELAST 701168 6 X 60	01
18	0501052179	JUNTA UNI C/LUVA/PROT	01
19	0501052180	JUNTA UNI C/EIXO/PROT	01
20	0503012277	PROT COMPL CCP 2030/1	01
21	0503012279	PROT PLAST P/JUNTA UNI EIXO	01
22	0503012278	PROT PLAST P/JUNTA UNI LUVA	01
23	0503012023	CORRENTE P/PROT JUNTA UNIVERSAL	02
24	0502010563	TERM 1-40 ENT 1.3/8 CC20	01
25	0521010638	EIXO JUNCAO ENG RAP 13,20 X 83 RC	01
26	0503030518	MOLA COMPR 13 X 25 X 1,2	01
27	0503010838	PINO ELAST 701060 3 X 20	01



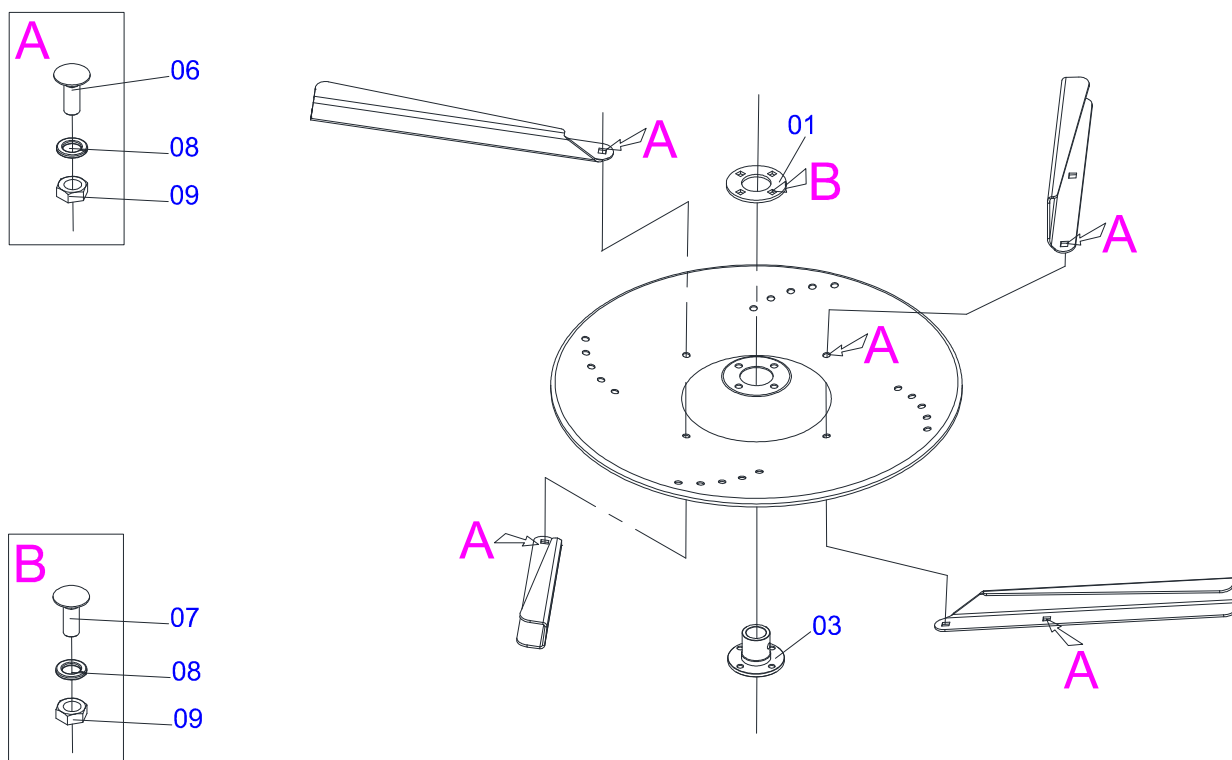
Item	Código	Descrição	QT
01	0501051729	JUNTA UNI C/LUVA/PROT	01
02	0501051727	JUNTA UNI C/EIXO/PROT	01
03	0502010558	TERM 4-20 C/ F 30 CC13	01
04	0502011426	TERM 2-20 C/ CANAL CC12C	01
05	0503012069	ADAPT P/ PROT LUVA CCB21	01
06	0501017426	LUVA Q.22,50/22,80X28,63/28,53X500	01
07	0503010835	CRUZETA CARDAN CC-04	01
08	0503010839	PINO ELAST 701192 8 X 50	01
09	0503010301	PINO ELAST 701191 8 X 45	01
10	0501051718	JUNTA UNI T4-20/T2-20 CC130412C	01
11	0501051720	JUNTA UNI T3-20/T4-20 CC130411C	01
12	0502011427	TERM 3-20 C/ CANAL CC11C	01
13	0502010558	TERM 4-20 C/ F 30 CC13	01
14	0503012070	ADAPT P/ PROT EIXO CCB22	01
15	0511010237	EIXO Q 22,23 X 450	01
16	0503010361	PINO ELAST 701221 10 X 60	01
17	0503010756	PINO ELAST 701168 6 X 60	01
18	0501051728	JUNTA UNI T4-20/T2-20 C/LUVA 500	01
19	0501051725	JUNTA UNI T3-20/T4-20 C/EIXO 500	01
20	0503012090	PROT PLAST P/JUNTA LUVA CCP1000/1F	01
21	0503012091	PROT PLAST P/JUNTA EIXO CCP1000/1M	01
22	0503012279	PROT PLAST P/JUNTA UNI EIXO	01
23	0503012023	CORRENTE P/PROT JUNTA UNIVERSAL	01
24	0502010563	TERM 1-40 ENT 1.3/8 CC20	01
25	0521010638	EIXO JUNCAO ENG RAP 13,20 X 83 RC	01
26	0503030518	MOLA COMPR 13 X 25 X 1,2	01
27	0503010838	PINO ELAST 701060 3 X 20	01



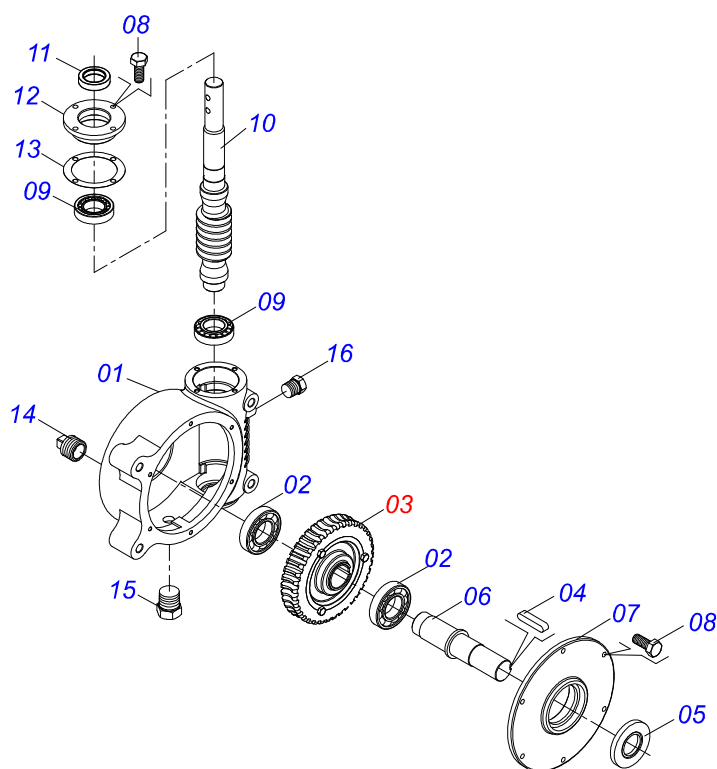
Item	Código	Descrição	QT
01	0503062157	MACACO COMPLETO (1259) ROBUSTEC	01



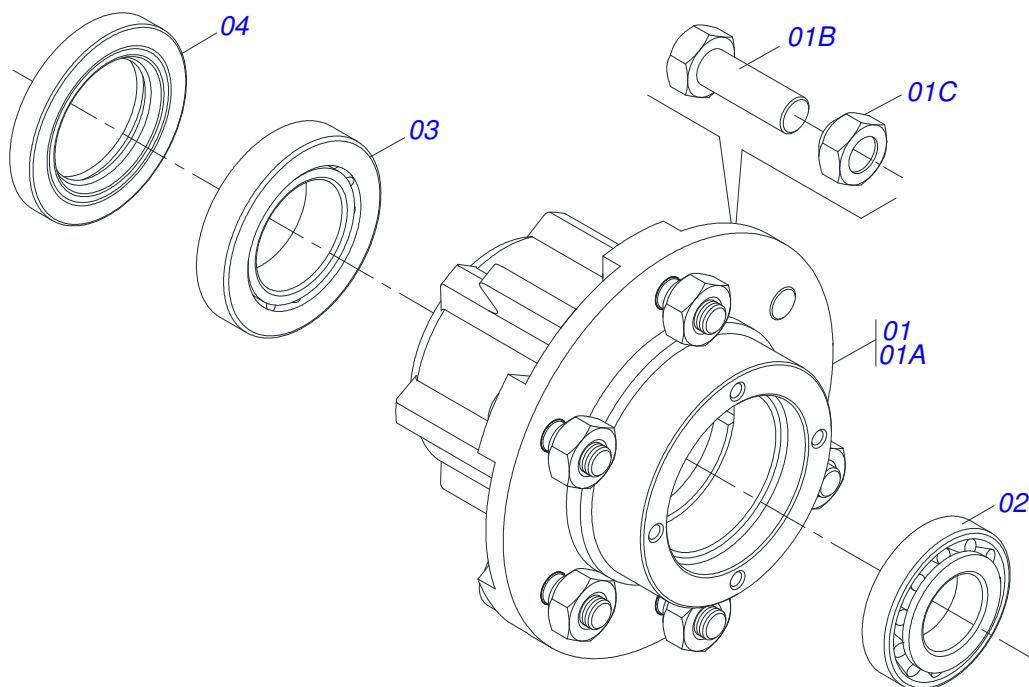
Item	Código	Descrição	QT
001	0571014230	CUBO DISCO DISTRIB DCA S-0813	01
002	0541016994	CORPO DISCO DISTR DCA CP 5500 RD	01
003	0571013670	FLANGE DISCO DISTRIB DCA	01
004	0541016998	ALETA MAIOR DIR DCA CP 5500 RD	02
005	0541016996	ALETA MENOR DIR DCA CP 5500 RD	02
006	0503013755	PARAF 3/8 UNC X 3/4 CAPQ INOX	08
007	0503012540	PARAF 3/8 UNC X 1 C A PQ INOX	04
008	0503012535	ARRUELA PRESSAO 3/8 INOX 1K01872	12
009	0503010026	PORCA S. 3/8 UNC G.5 ZN	12



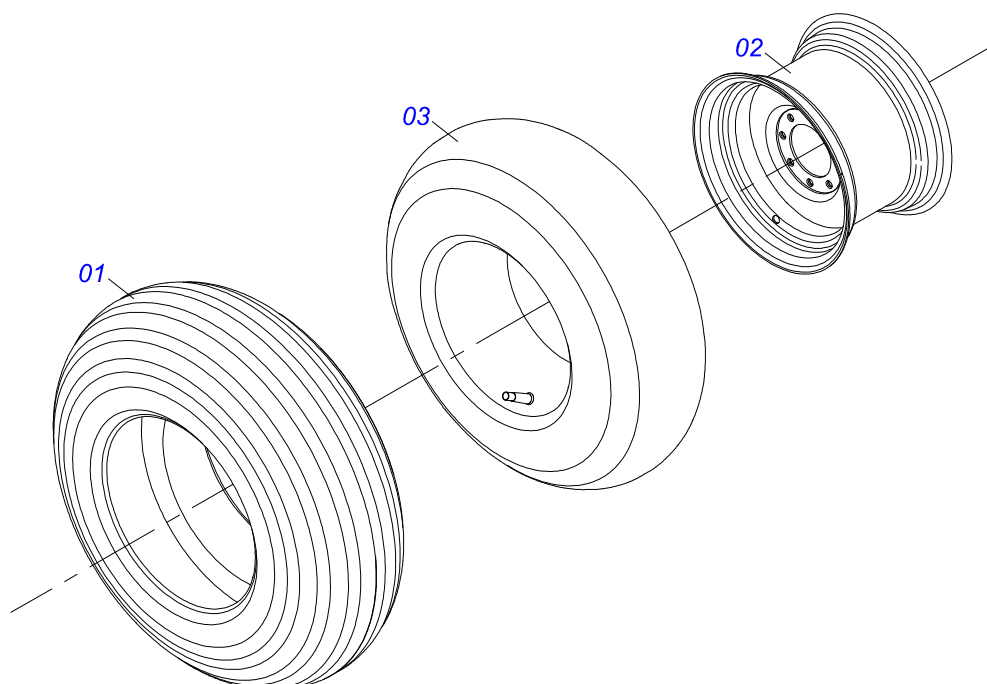
Item	Código	Descrição	QT
001	0571014230	CUBO DISCO DISTRIB DCA S-0813	01
002	0541017383	CORPO DISCO DISTRIB ESQ DCA CP 5500	01
003	0571013670	FLANGE DISCO DISTRIB DCA	01
004	0541016997	ALETA MAIOR ESQ DCA CP 5500 RD	02
005	0541016995	ALETA MENOR ESQ DCA CP 5500 RD	02
006	0503013755	PARAF 3/8 UNC X 3/4 CAPQ INOX	08
007	0503012540	PARAF 3/8 UNC X 1 C A PQ INOX	04
008	0503012535	ARRUELA PRESSAO 3/8 INOX 1K01872	12
009	0503010026	PORCA S. 3/8 UNC G.5 ZN	12



Item	Código	Descrição	QT
01	0502011456	CX RED DCA2 5500 MC	01
02	0503011095	ROL 6208 IMP	02
03	0501051774	COROA 38Z DCA2 5500 MC	01
04	0503011304	CHAVETA 1/2 X 1/2 X 60	01
05	0503010818	RET 02675-BRG	01
06	0521010996	EIXO COROA DCA2 5500 MC	01
07	0502020556	TAMPA MAIOR DCA2	01
08	0503010240	PARAF 5/16 UNC X 3/4 C S G.2 ZN	10
09	0503010016	ROL LM 48548/48510	02
10	0521010997	ROSCA SEM FIM DCA2 5500 MC	01
11	0503011171	RET 00912-BRG 1G119023	01
12	0502011457	TAMPA MENOR DCA2 5500 MC	01
13	0503030981	JUNTA VEDACAO 102 X 75,5 X 0,10	01
14	0521011023	BUJAO 1/2 BSP C/FURO DCA2 5500 MC	01
15	0503031604	BUJAO 1/2 BSP X 17	01
16	0503010856	BUJAO R3/8" BSPT	01



Item	Código	Descrição	QT
01	0501110728	CX ROD C/PARAF DCA	01
01A	0502011121	CX RODADO DCA2 5500 MC	01
01B	0501010127	PARAF ROD9/16UNFX1.7/8CR G.5 REC ZN	06
01C	0503010035	PORCA CONICA 9/16 UNF ZN	06
02	0503010037	ROL 30207 IMP	01
03	0503010006	ROL 32210 IMP	01
04	0503012928	RET 5985-GB	01



Item	Código	Descrição	QT
001	0503010858	PNEU 11L-15 10L	01
002	0503011468	RODA 10LB X 15 X 6F X 152,4 DCA/PSA	01
003	0503010860	CAMARA AR 11L 15	01

ANOTAÇÕES

This image shows a single page from a notebook or ledger. The page is white with rounded corners at the top. It features approximately 20 horizontal blue ruling lines spaced evenly apart. There are no vertical margin lines, and the page is completely blank except for the lines.

**PEÇAS ORIGINAIS
TATU**



MARCHESAN



MARCHESAN IMPLEMENTOS E MÁQUINAS AGRÍCOLAS TATU S.A.

AV. Marchesan, 1979 - Cx. Postal, 131 - CEP 15994-900 - Matão - SP - Brasil

FONE: (16) 3382-8282

(FAX Vendas): +55 16.3382-8297 - (FAX Exportação) + 55 16.3382.1003

e.mail: tatu@marchesan.com.br

Home Page: www.marchesan.com.br

Publicações Técnicas: Elaboração
LUIZ CANDIDO

Publicações Técnicas: Revisão
JOSÉ DOMINGOS GASPARI

Contatos Catálogo:
E-mail = jgaspari@marchesan.com.br

**PEÇAS ORIGINAIS
TATU**

