

OFFSET DISK HARROW

GASPCR - 12/14/16/18/20/22D

Code: 0501091170
Series: S-1094
Revision: 00
Date Revision: MARÇO/2021

PARTS CATALOGUE



MARCHESAN



PRODUCTS

Code	Description
0102090007	GASPCR 12 X 32 X 9,00 CM S-1094
0102090043	GASPCR 12 X 32 X 9,00 DM S-1094
0102090044	GASPCR 12 X 32 X 12,00 DM S-1094
0102090045	GASPCR 12 X 34 X 9,00 DM S-1094
0102090046	GASPCR 12 X 34 X 12,00 DM S-1094
0102090011	GASPCR 12 X 36 X 9,00 CM S-1094
0102090047	GASPCR 12 X 36 X 9,00 DM S-1094
0102090048	GASPCR 12 X 36 X 12,00 DM S-1094
0102090049	GASPCR 14 X 32 X 9,00 DM S-1094
0102090050	GASPCR 14 X 32 X 12,00 DM S-1094
0102090051	GASPCR 14 X 34 X 9,00 DM S-1094
0102090052	GASPCR 14 X 34 X 12,00 DM S-1094
0102090053	GASPCR 14 X 36 X 9,00 DM S-1094
0102090054	GASPCR 14 X 36 X 12,00 DM S-1094
0102090055	GASPCR 16 X 32 X 9,00 DM S-1094
0102090056	GASPCR 16 X 32 X 12,00 DM S-1094
0102090057	GASPCR 16 X 34 X 9,00 DM S-1094
0102090058	GASPCR 16 X 34 X 12,00 DM S-1094
0102090059	GASPCR 16 X 36 X 9,00 DM S-1094
0102090024	GASPCR 16 X 36 X 12,00 CM S-1094
0102090060	GASPCR 16 X 36 X 12,00 DM S-1094
0102090110	GASPCR 16 X 36 X 9,00DM S/PN S-1094
0102090025	GASPCR 18 X 32 X 9,00 CM S-1094
0102090061	GASPCR 18 X 32 X 9,00 DM S-1094
0102090094	GASPCR 18 X 32 X 9,00DM UR S-1094
0102090026	GASPCR 18 X 32 X 12,00 CM S-1094
0102090062	GASPCR 18 X 32 X 12,00 DM S-1094
0102090279	GASPCR 18 X 32 X 12,00 DM ESP S-1094
0102090062C	GASPCR 18 X 32 X 12,00 DM EXP S-1094
0102090095	GASPCR 18 X 32 X 12,00 DM UR S-1094

ATTENTION: IMPORTANT

Marchesan S.A. reserves the right to improve and / or modify the technical features of its products, without obligation to do the same with those products already sold and without prior knowledge of the dealer or the consumer.



PRODUCTS

0102090151	GASPCR 18 X 32 X 12,00 DM USA S1094
0102090025C	GASPCR 18 X 32 X 9,00 CM EXP S-1094
0102090027	GASPCR 18 X 34 X 9,00 CM S-1094
0102090063	GASPCR 18 X 34 X 9,00 DM S-1094
0102090028	GASPCR 18 X 34 X 12,00 CM S-1094
0102090064	GASPCR 18 X 34 X 12,00 DM S-1094
0102090029	GASPCR 18 X 36 X 9,00 CM S-1094
0102090065	GASPCR 18 X 36 X 9,00 DM S-1094
0102090030	GASPCR 18 X 36 X 12,00 CM S-1094
0102090066	GASPCR 18 X 36 X 12,00 DM S-1094
0102090154	GASPCR 18 X 36 X 12,00 DM USA S1094
0102090109	GASPCR 18 X 36 X 12,00DM S/PN S1094
0102090150	GASPCR 18 X 36 X 9,00 DM USA S-1094
0102090031	GASPCR 20 X 32 X 9,00 CM S-1094
0102090067	GASPCR 20 X 32 X 9,00 DM S-1094
0102090096	GASPCR 20 X 32 X 9,00 DM UR S-1094
0102090032	GASPCR 20 X 32 X 12,00 CM S-1094
0102090068	GASPCR 20 X 32 X 12,00 DM S-1094
0102090097	GASPCR 20 X 32 X 12,00 DM UR S-1094
0102090152	GASPCR 20 X 32 X 12,00 DM USA S1094
0102090033	GASPCR 20 X 34 X 9,00 CM S-1094
0102090069	GASPCR 20 X 34 X 9,00 DM S-1094
0102090034	GASPCR 20 X 34 X 12,00 CM S-1094
0102090070	GASPCR 20 X 34 X 12,00 DM S-1094
0102090035	GASPCR 20 X 36 X 9,00 CM S-1094
0102090071	GASPCR 20 X 36 X 9,00 DM S-1094
0102090071C	GASPCR 20 X 36 X 9,00 DM EXP S-1094
0102090036	GASPCR 20 X 36 X 12,00 CM S-1094
0102090072	GASPCR 20 X 36 X 12,00 DM S-1094
0102090072C	GASPCR 20 X 36 X 12,00 DM EXP S-1094
0102090161	GASPCR 20 X 36 X 12,00 DM TER S1094

ATTENTION: IMPORTANT

Marchesan S.A. reserves the right to improve and / or modify the technical features of its products, without obligation to do the same with those products already sold and without prior knowledge of the dealer or the consumer.



PRODUCTS

0102090155	GASPCR 20 X 36 X 12,00 DM USA S1094
0102090128	GASPCR 20 X 36 X 12,00DRDMS/PN 1094
0102090124	GASPCR 20 X 36 X12,00 DM AUST S1094
0102090213	GASPCR 20 X 38 X 12,00 DM S-1094
0102090179	GASPCR 20X36X12DM S/SIST ROD S-1094
0102090098	GASPCR 22 X 32 X 9,00 DM S-1094
0102090153	GASPCR 22 X 32 X 9,00 DM USA S1094
0102090100	GASPCR 22 X 34 X 9,00 DM S-1094
0102090101	GASPCR 22 X 34 X 12,00 DM S-1094
0102090086	GASPCR 22 X 36 X 9,00 DM S-1094
0102090108	GASPCR 22 X 36 X 12,00 CM S-1094
0102090102	GASPCR 22 X 36 X 12,00 DM S-1094
0102090087	GASPCR 22 X 36 X 12,00 DM S-1094
0102090102C	GASPCR 22 X 36 X 12,00 DM EXP S-1094
0102090156	GASPCR 22 X 36 X 12,00 DM USA S1094
0102090121	GASPCR 22 X 36 X 12,00DM S/PN S1094
0102090122	GASPCR 22 X 36 X12,00 DM AUST S1094

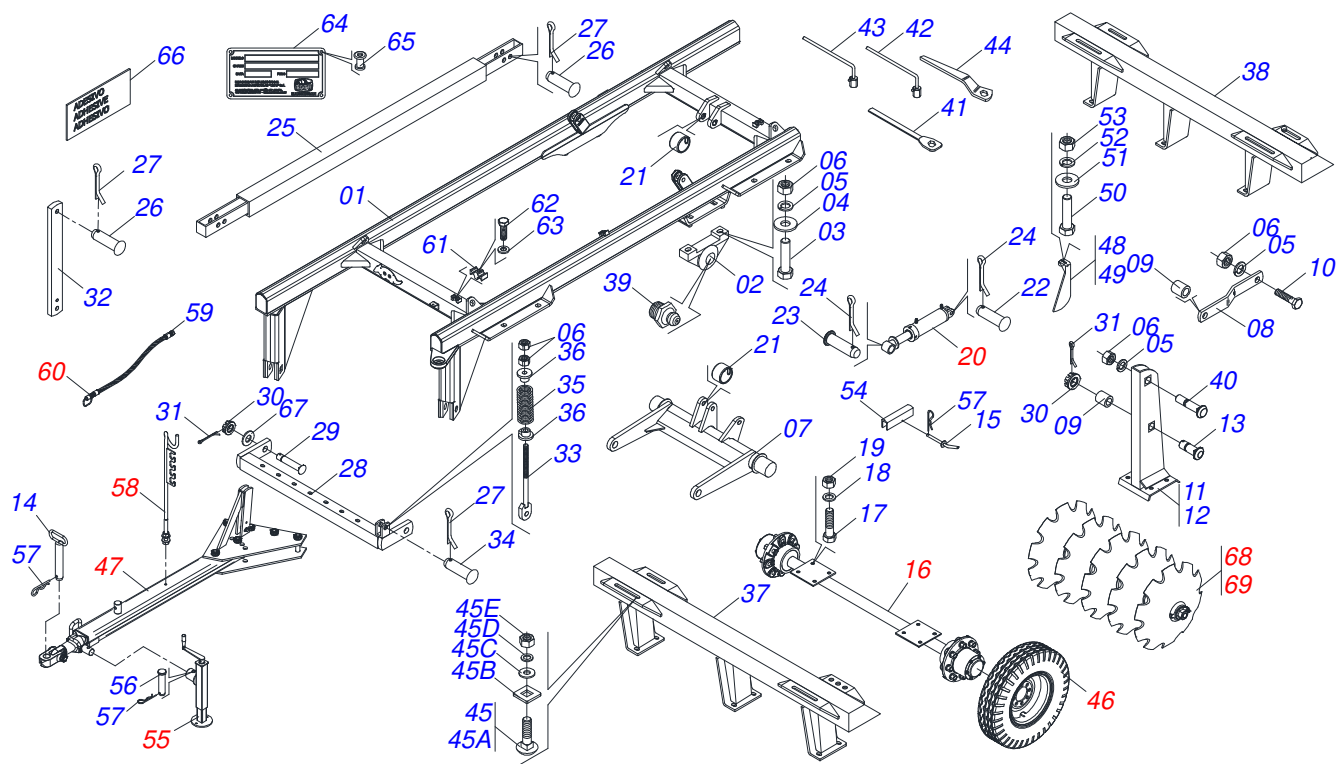
ATTENTION: IMPORTANT

Marchesan S.A. reserves the right to improve and / or modify the technical features of its products, without obligation to do the same with those products already sold and without prior knowledge of the dealer or the consumer.



INDEX

0909095314	ASSY FRAME - 12/14/16D	1
0909090157	ASSY FRAME - 18/20/22D	2
0501047810	3-1/2" X 84.1" STUB SHAFT & HUB	3
0511059181	HYDRAULIC CYLINDER 50,80X101,60X515X248	4
0511041570	DRAWBAR ASSY 3"	5
0501046307	DRAWBAR ASSY	6
0511048088	DRAWBAR JACK	7
0503060213	35.4"X0.80"-14L WHEEL AND TIRE ASSY	8
0501053834	MALE QUICK COUPLER WITH CAP - 1/2 NPT	9
0909091798	FRONT DISC SECTION - 12/14/16/18/20/22D	10
0909094189	REAR DISK SECTION - 12/14/16/18/20/22D	11
0501046926	330MM X 2-1/8" RD. OIL BATH BEARING	12
0501046900	430MM X 2-1/2" RD. OIL BATH BEARING	13



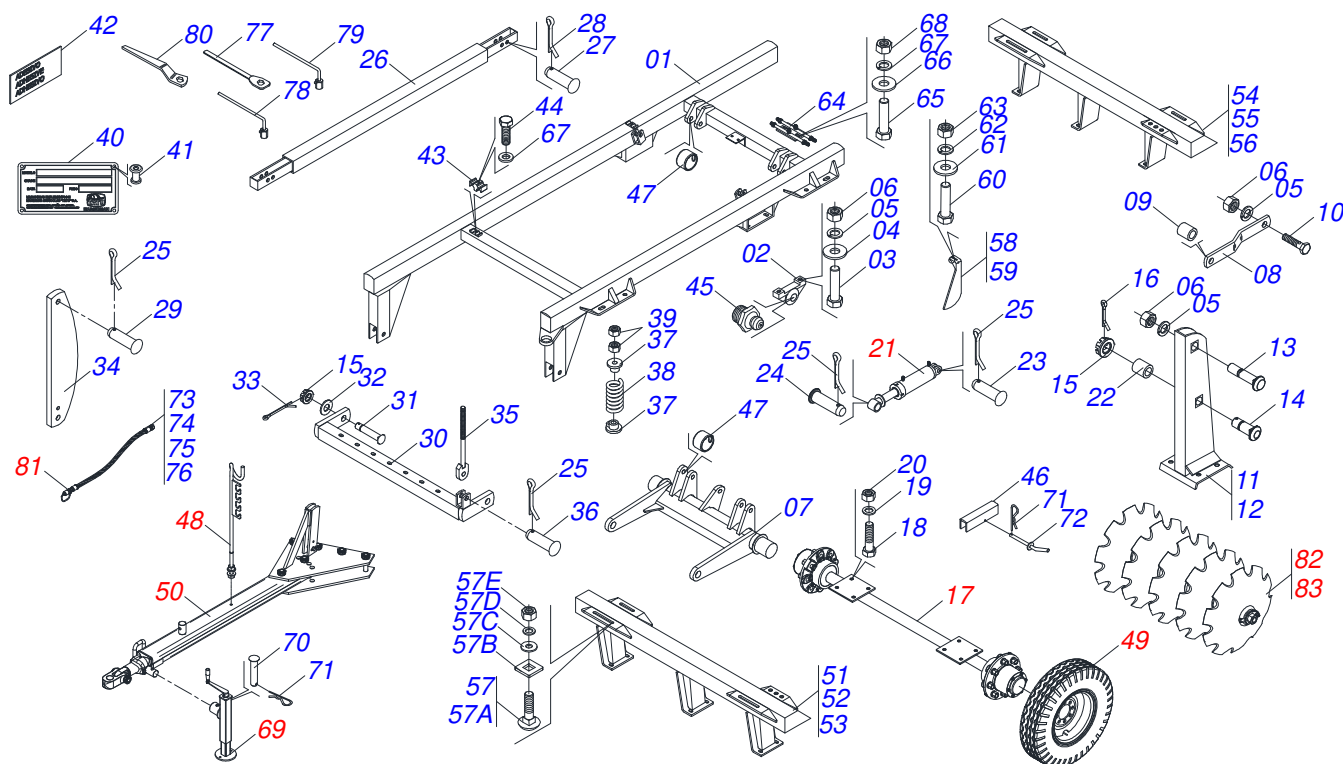
Item	Code	Description	See page	12	14	16
01	0501067249	CENTER FRAME		01	01	01
02	0502010972	ARTICULACION BEARING		02	02	02
03	0503011432	BOLT		04	04	04
04	0501010065	1" SPRING WASHER		12	12	12
05	0503011438	SPRING WASHER		18	18	18
06	0501010059	1.5/8 NUT		18	18	18
07	0501067244	WHEELS		01	01	01
08	0501110404	SUPPORT BAR		02	02	02
09	0511019921	1.3" X 0.1" X 1" SLEEVE		03	03	03
10	0503011432	BOLT		02	02	02
11	0501068260	RIGHT SUSPENSION TOWER		01	01	01
12	0501068261	LEFT SUSPENSION TOWER		01	01	01
13	0511818006	BOLT		02	02	02
14	0501048472	1.2" X 7.3" COUPLING SHAFT		01	01	01
15	0501068994	0.3" X 3.1" LOCK PIN		01	01	01
16	0501047810	3-1/2" X 84.1" STUB SHAFT & HUB	3	02	02	02
17	0501010125	3/4" X 2-1/2" BOLT		08	08	08
18	0503011442	3/4" SPRING WASHER		08	08	08
19	0503010014	3/4" NUT		08	08	08
20	0511059181	HYDRAULIC CYLINDER 50,80X101,60X515X248	4	01	01	01
21	0511019920	LUVA 32,7 X 38,8 X 25,40		08	08	08
22	0511010174	1.2" X 5.9" COUPLING SHAFT		01	01	01
23	0521010547	1.2" X 6.5" COUPLING SHAFT		01	01	01
24	0503010523	1/4" X 2" COTTERPIN		04	04	04
25	0501067243	STABILIZER BAR		01	01	01
26	0521010575	C0.9" X 3.3" COUPLING SHAFT		03	03	03
27	0503010571	1/4" X 1.1/2 COTTERPIN		03	03	03
28	0501067241	OFFSET BAR		01	01	01
29	0521017538	11-1/2" X 5" COUPLING SHAFT		02	02	02
30	0501011301	1.1/2 UNC 6FPP 2.5/16 NUT		02	02	02
31	0503010010	1/4" X 2.1/2" COTTERPIN		04	04	04



ASSY FRAME - 12/14/16D

0909095314

Item	Code	Description	See page	12	14	16
32	0511016121	STABILIZER BAR TOWER		01	01	01
33	0501066362	SPRING ROD		01	01	01
34	0521010592	1.1" X 3.1" COUPLING SHAFT		01	01	01
35	0503031341	2.7 X 8 X 0.5 COMPRESSION SPRING		01	01	01
36	0502020394	SPRING SUPPORT		02	02	02
37	0501060552	FRONT FRAME 12		01	00	00
37.	0501060553	FRONT FRAME 14		00	01	00
37..	0501060554	FRONT FRAME 16		00	00	01
38	0501060557	REAR FRAME 12		01	00	00
38.	0501060558	REAR FRAME 14		00	01	00
38..	0501060559	REAR FRAME 16		00	00	01
39	0503010002	1800 GREASE FITTING		02	02	02
40	0511017974	1 U BOLT OF THE SUSPENSION TOWER		02	02	02
41	0501061044	2-1/8" AND 2-1/2" CABLE FLAT WRENCH		02	02	02
42	0501061045	1" WRENCH CYLINDRICAL		01	01	01
43	0503016137	1-1/4" WRENCH CABLE CYLINDER		01	01	01
44	0501011432	1-1/2" AND 1-5/8 GANG BOLT WRENCH		01	01	01
45	0501040877	C1" X 3-1/4" ASSY BOLT		08	08	08
45A	0501010171	BOLT 1 UNC X 3.1/2 C S G.5		08	08	08
45B	0502012861	1" SQUARE WASHER		08	08	08
45C	0501010065	1" SPRING WASHER		08	08	08
45D	0503010012	1" SPRING WASHER		08	08	08
45E	0501010059	1.5/8 NUT		08	08	08
46	0503060213	35.4"X0.80"-14L WHEEL AND TIRE ASSY	8	04	04	04
47	0501046307	DRAWBAR ASSY	6	01	01	01
47.	0511041570	DRAWBAR ASSY 3"	5	00	00	01
48	0501060423	FRONT SCRAPER		06	07	08
49	0501060424	REAR SCRAPER		24	28	32
50	0503010233	5/8" X 2-1/2" BOLT		24	28	32
51	0501012140	FLAT WASHER		24	28	32
52	0503010027	5/8" SPRING WASHER		24	28	32
53	0503010013	5/8" NUT		24	28	32
54	0501066386	TRANSPORT LOCK 9.54"		01	01	01
55	0511048088	DRAWBAR JACK	7	01	01	01
56	0561014251	COUPLING SHAFT		01	01	01
57	0503030168	HAIR PIN		03	03	03
58	0501040257	3/4 X 1200 HOSE HOLDER A		01	01	01
59	0501051043	HOSE ASSY		01	01	01
60	0501053834	MALE QUICK COUPLER WITH CAP - 1/2 NPT	9	02	02	02
61	0502012702	BODY SUPPORT CLAMP		03	03	03
62	0503010751	C3/8" X 1.1/4" HEX BOLT G.5		03	03	03
63	0503010025	3/8" SPRING WASHER		03	03	03
64	0503034003	SERIAL NUMBER TAG 61 X 118		01	01	01
65	0503010001	3.2 X 5.5 RIVET		04	04	04
66	0503060832	SET LABEL ADHESIVE		01	01	01
67	0501012916	FLAT WASHER 38,50 X 66 X 4,75 ZN		02	02	02
68	0909091798	FRONT DISC SECTION - 12/14/16/18/20/22D	10	01	01	01
69	0909094189	REAR DISK SECTION - 12/14/16/18/20/22D	11	01	01	01



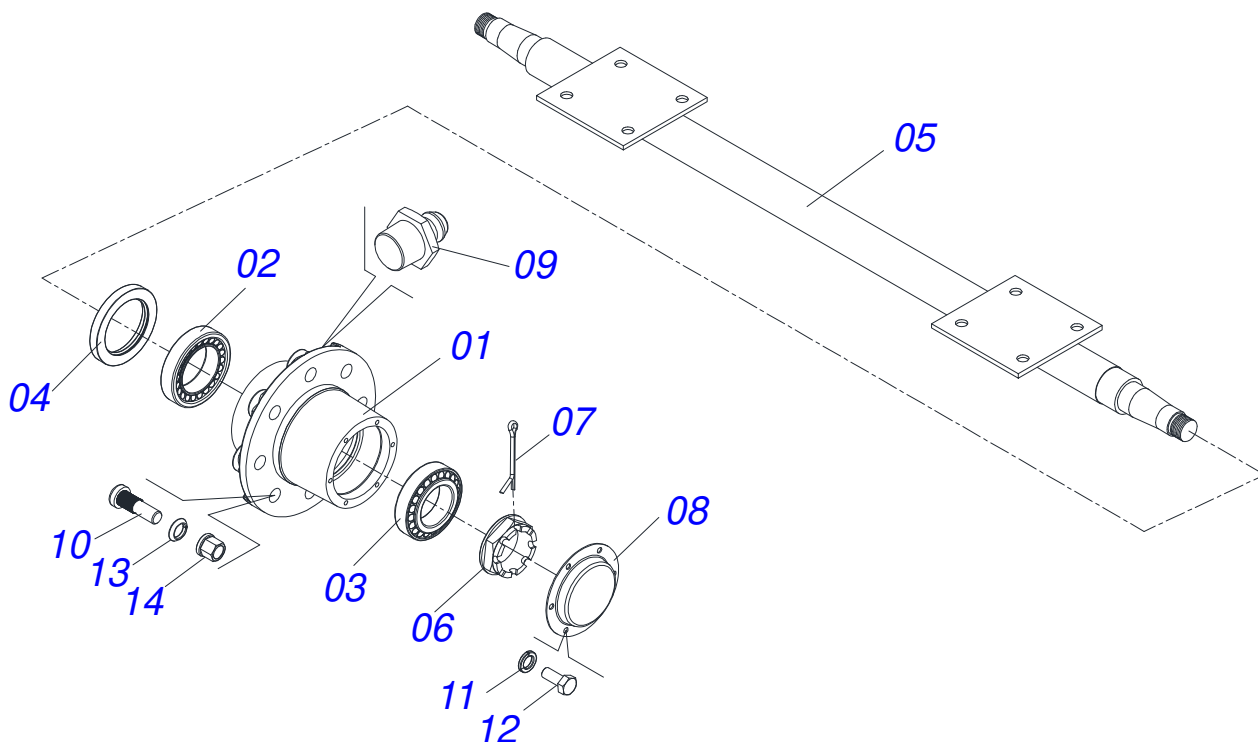
Item	Code	Description	See page	18	20	22
01	0501067249	CENTER FRAME		01	01	01
02	0502010972	ARTICULACION BEARING		02	02	02
03	0503011432	BOLT		04	04	04
04	0501010065	1" SPRING WASHER		04	04	04
05	0503011438	SPRING WASHER		06	06	06
06	0501010059	1.5/8 NUT		06	06	06
07	0501067244	WHEELS		01	01	01
08	0501110404	SUPPORT BAR		02	02	02
09	0511019921	1.3" X 0.1" X 1" SLEEVE		02	02	02
10	0503011432	BOLT		02	02	02
11	0501068260	RIGHT SUSPENSION TOWER		01	01	01
12	0501068261	LEFT SUSPENSION TOWER		01	01	01
13	0511017974	1 U BOLT OF THE SUSPENSION TOWER		02	02	02
14	0511018006	1-1/2 X 4.13" U BOLT OF SUSP TOWER		02	02	02
15	0501011301	1.1/2 UNC 6FPP 2.5/16 NUT		09	09	09
16	0503010010	1/4" X 2.1/2" COTTERPIN		09	09	09
17	0501047810	3-1/2" X 84.1" STUB SHAFT & HUB	3	02	02	02
18	0501010125	3/4" X 2-1/2" BOLT		08	08	08
19	0503010023	3/4" SPRING WASHER		08	08	08
20	0503010014	3/4" NUT		08	08	08
21	0511059181	HYDRAULIC CYLINDER 50,80X101,60X515X248	4	02	02	02
22	0521010737	2" X 1.5" X 1.4" SLEEVE		06	06	06
23	0511010174	1.2" X 5.9" COUPLING SHAFT		01	01	01
24	0521010547	1.2" X 6.5" COUPLING SHAFT		01	01	01
25	0503010523	1/4" X 2" COTTERPIN		05	05	05
26	0501067243	STABILIZER BAR		01	01	01
26.	0511064485	STABILIZER BAR ALQUIP		01	01	01
27	0521010575	C0.9" X 3.3" COUPLING SHAFT		01	01	01
28	0503010571	1/4" X 1.1/2 COTTERPIN		01	01	01
29	0521012538	1.2" X 3.5" COUPLING SHAFT		01	01	01
30	0501067241	OFFSET BAR		01	01	01



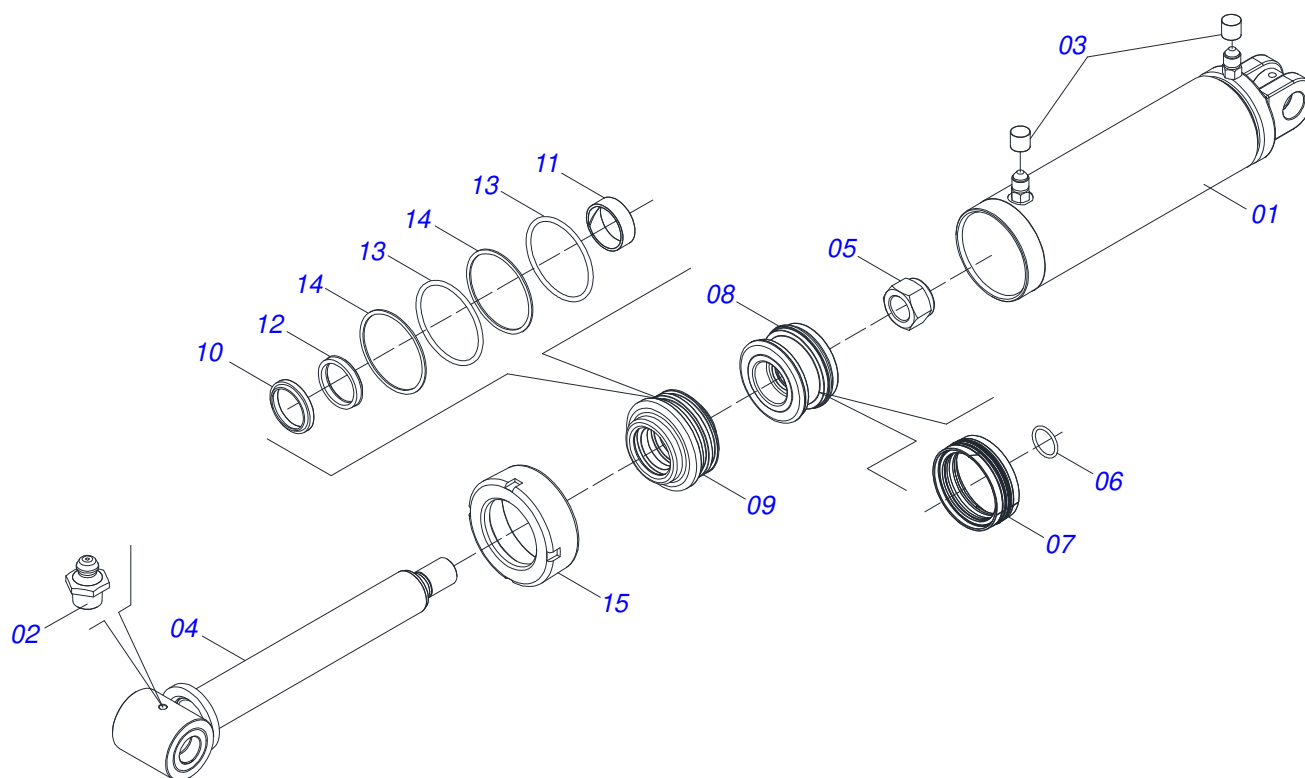
ASSY FRAME - 18/20/22D

0909090157

Item	Code	Description	See page	18	20	22
31	0521012052	1.5" X 6.7" PIVOT SHAFT		02	02	02
32	0501012916	FLAT WASHER 38,50 X 66 X 4,75 ZN		02	02	02
33	0503010010	1/4" X 2.1/2" COTTERPIN		02	02	02
34	0511016121	STABILIZER BAR TOWER		01	01	01
35	0501066362	SPRING ROD		01	01	01
36	0521010592	1.1" X 3.1" COUPLING SHAFT		01	01	01
37	0502020394	SPRING SUPPORT		02	02	02
38	0503031341	2.7 X 8 X 0.5 COMPRESSION SPRING		01	01	01
39	0501010087	1.1/4" NUT		10	10	10
40	0503030310	ADHESIVE		01	01	01
41	0503010001	3.2 X 5.5 RIVET		04	04	04
42	0503060832	SET LABEL ADHESIVE		01	01	01
43	0502012702	BODY SUPPORT CLAMP		03	03	03
44	0503010751	C3/8" X 1.1/4" HEX BOLT G.5		03	03	03
45	0503010002	1800 GREASE FITTING		02	02	02
46	0501066386	TRANSPORT LOCK 9.54"		01	01	01
47	0511019920	LUVA 32,7 X 38,8 X 25,40		08	08	08
48	0501040257	3/4 X 1200 HOSE HOLDER A		01	01	01
49	0503060213	35.4"X0.80"-14L WHEEL AND TIRE ASSY	8	02	02	02
50	0501069323	DRAWBAR ASSY		01	01	01
51	0501060555	FRONT FRAME		01	00	00
52	0501060556	FRONT FRAME 20		00	01	00
53	0501067204	FRONT FRAME 22		00	00	01
54	0501060560	REAR FRAME 18		01	00	00
55	0501060561	REAR FRAME 20		00	01	00
56	0501067205	REAR FRAME 22		00	00	01
57	0501041102	1-1/4" X 3-3/4" ASSY BOLT		08	08	08
57A	0501015348	1-1/4" X 3-3/4" BOLT		08	08	08
57B	0501010953	1-1/4" SQUARE WASHER		08	08	08
57C	0531010713	FLAT WASHER		08	08	08
57D	0503010070	SPRING WASHER		08	08	08
57E	0501010087	1.1/4" NUT		08	08	08
58	0501060423	FRONT SCRAPER		09	10	11
59	0501060424	REAR SCRAPER		09	10	11
60	0503010233	5/8" X 2-1/2" BOLT		18	20	22
61	0501012140	FLAT WASHER		18	20	22
62	0503010027	5/8" SPRING WASHER		18	20	22
63	0503010013	5/8" NUT		18	20	22
64	0501068706	DOUBLE CONNECTION		01	01	01
65	0501010080	3/8" BOLT		02	02	02
66	0501010984	FLAT WASHER		02	02	02
67	0503010025	3/8" SPRING WASHER		02	02	02
68	0503010026	3/8" NUT		03	03	03
69	0511048088	DRAWBAR JACK	7	01	01	01
70	0561014251	COUPLING SHAFT		01	01	01
71	0503030168	HAIR PIN		03	03	03
72	0501068994	0.3" X 3.1" LOCK PIN		02	02	02
73	0501080054	3/8" X 17" TR-TC HOSE ASSY		02	02	02
74	0501080413	3/8" X 27" TR-TC HOSE		02	02	02
75	0501080458	3/8" X 315" TC-TM HOSE ASSY		01	01	01
76	0501080459	3/8" X 322" TC-TM HOSE ASSY		01	01	01
77	0501061044	2-1/8" AND 2-1/2" CABLE FLAT WRENCH		02	02	02
78	0501061045	1" WRENCH CYLINDRICAL		01	01	01
79	0503016137	1-1/4" WRENCH CABLE CYLINDER		01	01	01
80	0501011432	1-1/2" AND 1-5/8" GANG BOLT WRENCH		01	01	01
81	0501053834	MALE QUICK COUPLER WITH CAP - 1/2 NPT	9	02	02	02
82	0909091798	FRONT DISC SECTION - 12/14/16/18/20/22D	10	01	01	01
83	0909094189	REAR DISK SECTION - 12/14/16/18/20/22D	11	01	01	01

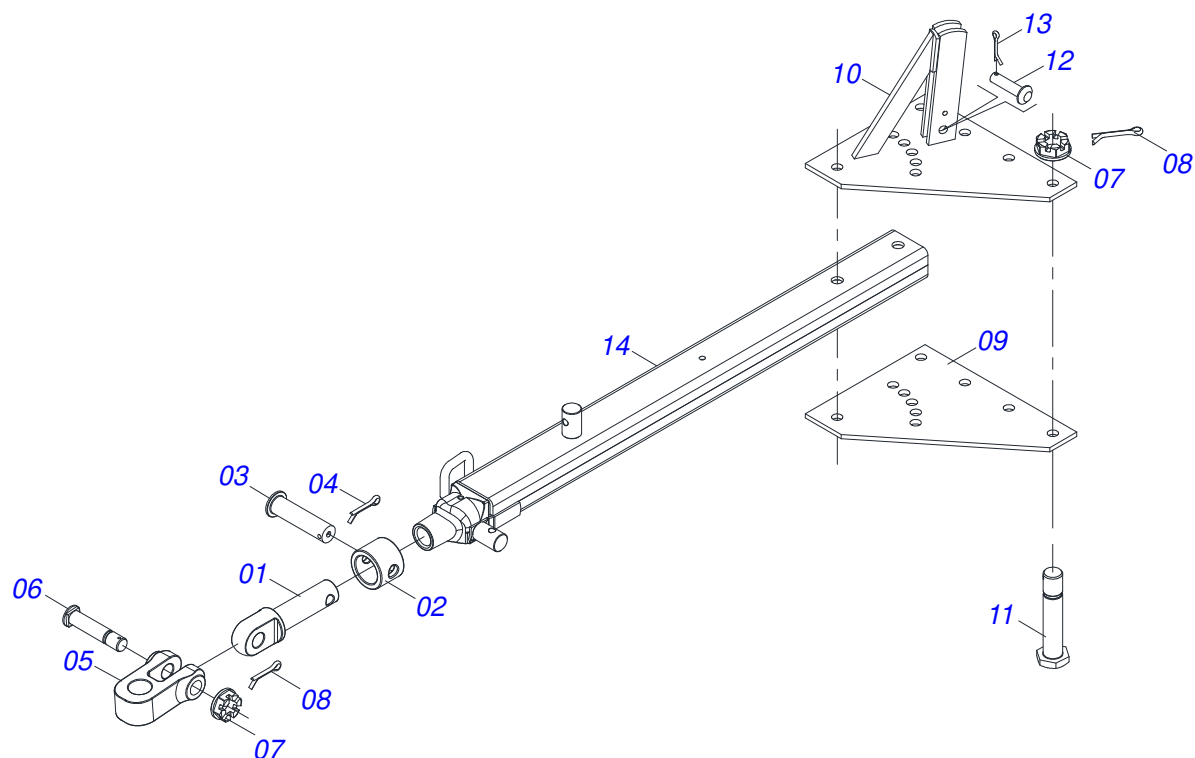


Item	Code	Description	See page	QT
01	0501110751	HUB AND SPINDLE WITH BOLT		02
02	0503010059	33287/33462 ROLLER BEARING		02
03	0503010007	3982/3920 ROLLER BEARING		02
04	0503010050	SEAL 00085-B		02
05	0501067251	3-1/2" X 84" AXLE		01
06	0502040080	2.1/2" SLOTTED NUT		02
07	0503011345	1/4" X 3-1/2" COTTERPIN		02
08	0541013225	WHEEL BOX COVER		02
09	0503010002	1800 GREASE FITTING		02
10	0503811339	BOLT		08
11	0503010179	5/16" ZN SPRING WASHER		16
12	0503010240	5/16" X 3/4" BOLT		16
13	0503811340	SPHERICAL SPRING WASHER		08
14	0503811341	NUT		08



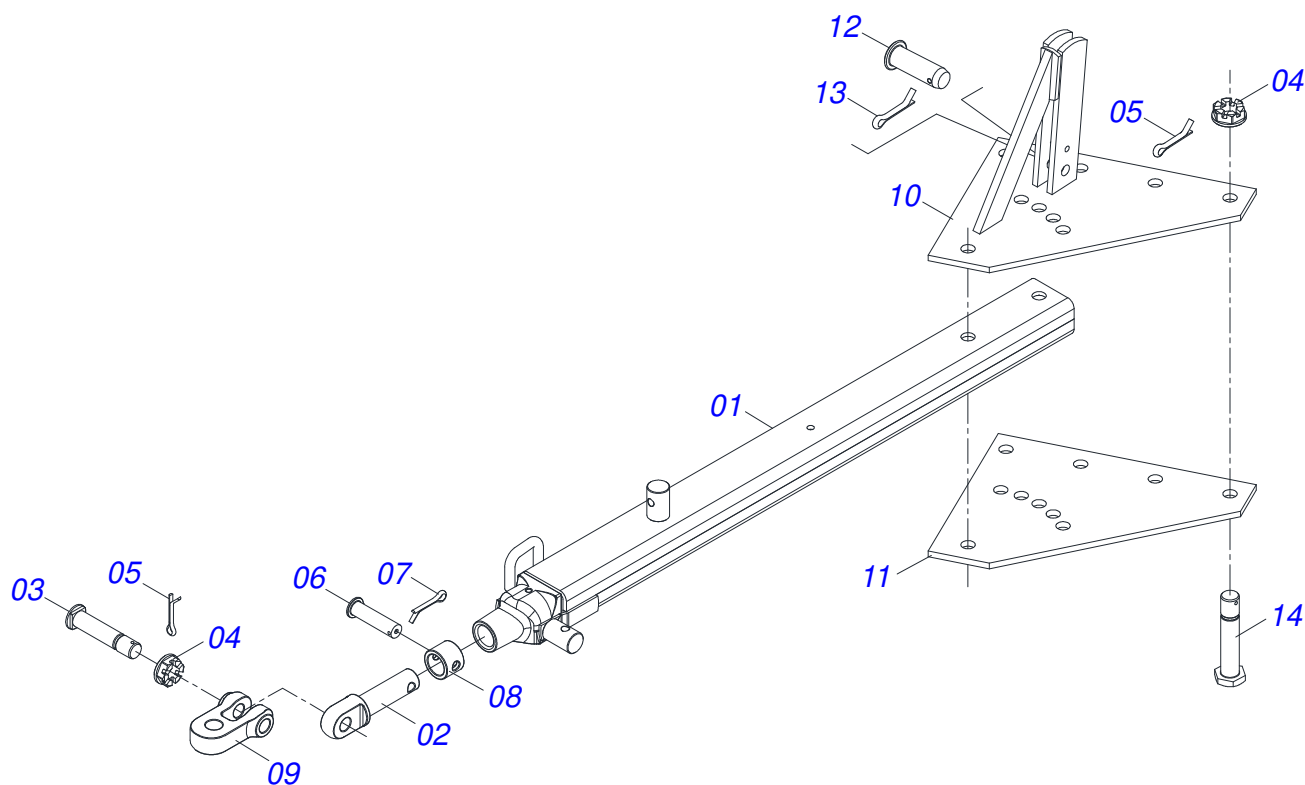
Item	Code	Description	See page	QT
001	0501067256	4" X 16" CYLINDER CASE		01
002	0503010002	1800 GREASE FITTING		02
003	0503030385	CYLINDER PLUG N-002		02
004	0521066345	50,80 X 452 TURNBUCLE		01
005	0503010817	1.1/4" SELF LOCKING NUT		01
006	0503010345	2-218 N 3006-9B O'RING		01
007	0503015633	SELEMASTER SEALING		01
008	0502012842	50,80 X 101,60 PISTON		01
009	0581010678	50,80 X 101 RING SUPPORT		01
010	0503015636	SCRAPER SEAL		01
011	0503018025	RING GUIDE		01
012	0503018026	1870-2000-375 B GASKET		01
013	0503010338	2-342 N 3006-9B O'RING		02
014	0503011061	8-342 BACK-UP RING		02
015	0502012822	101.60 END CAP		01

DRAWBAR ASSY 3"



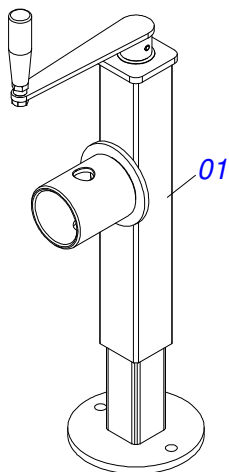
Item	Code	Description	See page	QT
001	0502040223	DRAWBOLT		01
002	0502040327	ANEL TRAVA ENGATE		01
003	0511014902	COUPLING SHAFT		01
004	0503010571	1/4" X 1.1/2 COTTERPIN		01
005	1902040733	U COUPLING HOOK		01
006	0521012545	COUPLING SHAFT		01
007	0501011301	1.1/2 UNC 6FPP 2.5/16 NUT		07
008	0503010010	1/4" X 2.1/2" COTTERPIN		07
009	0511016137	UPPER /LOWER PLATE		01
010	0501067250	UPPER PLATE WITH SUPPORT		01
011	0501016419	1-1/2" X 7.5" BOLT		06
012	0521010779	31.75 X 95 COUPLING SHAFT		01
013	0503010523	1/4" X 2" COTTERPIN		01
014	0501069323	DRAWBAR ASSY		01

DRAWBAR ASSY

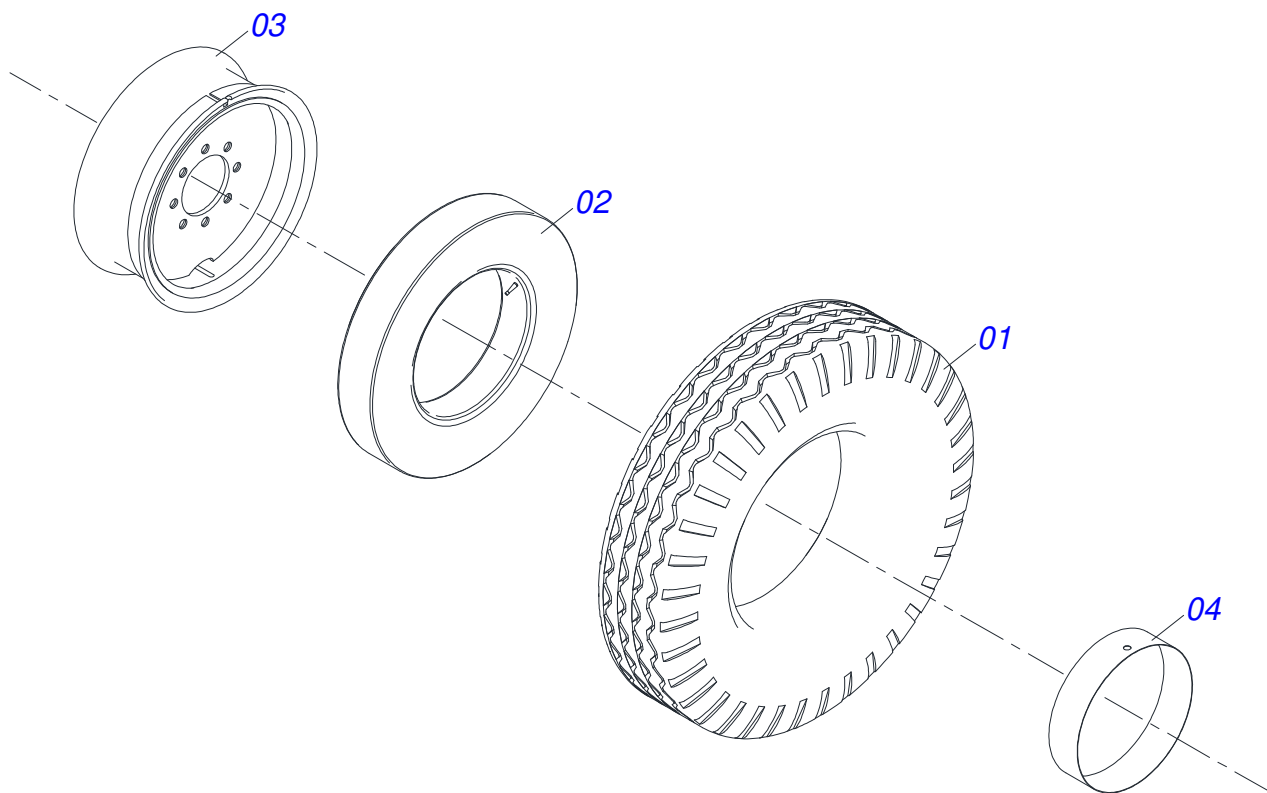


Item	Code	Description	See page	QT
01	0501069323	DRAWBAR ASSY		01
02	1902040223	PIN HITCH		01
03	0521012545	COUPLING SHAFT		01
04	0501011301	1.1/2 UNC 6FPP 2.5/16 NUT		07
05	0503010010	1/4" X 2.1/2" COTTERPIN		07
06	0511014902	COUPLING SHAFT		01
07	0503010571	1/4" X 1.1/2 COTTERPIN		01
08	1902040327	LOCK SLEEVE		01
09	1902040732	COUPLING		01
10	0501067250	UPPER PLATE WITH SUPPORT		01
11	0511016137	UPPER /LOWER PLATE		01
12	0521010779	31.75 X 95 COUPLING SHAFT		01
13	0503010523	1/4" X 2" COTTERPIN		01
14	0501016419	1-1/2" X 7.5" BOLT		06

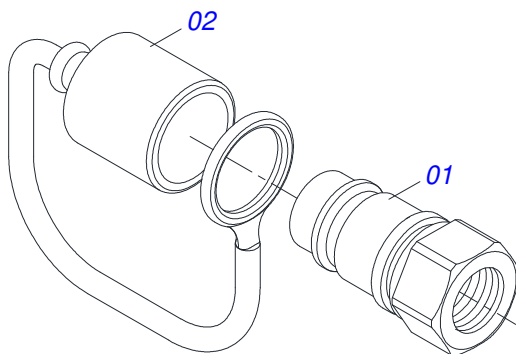
DRAWBAR JACK



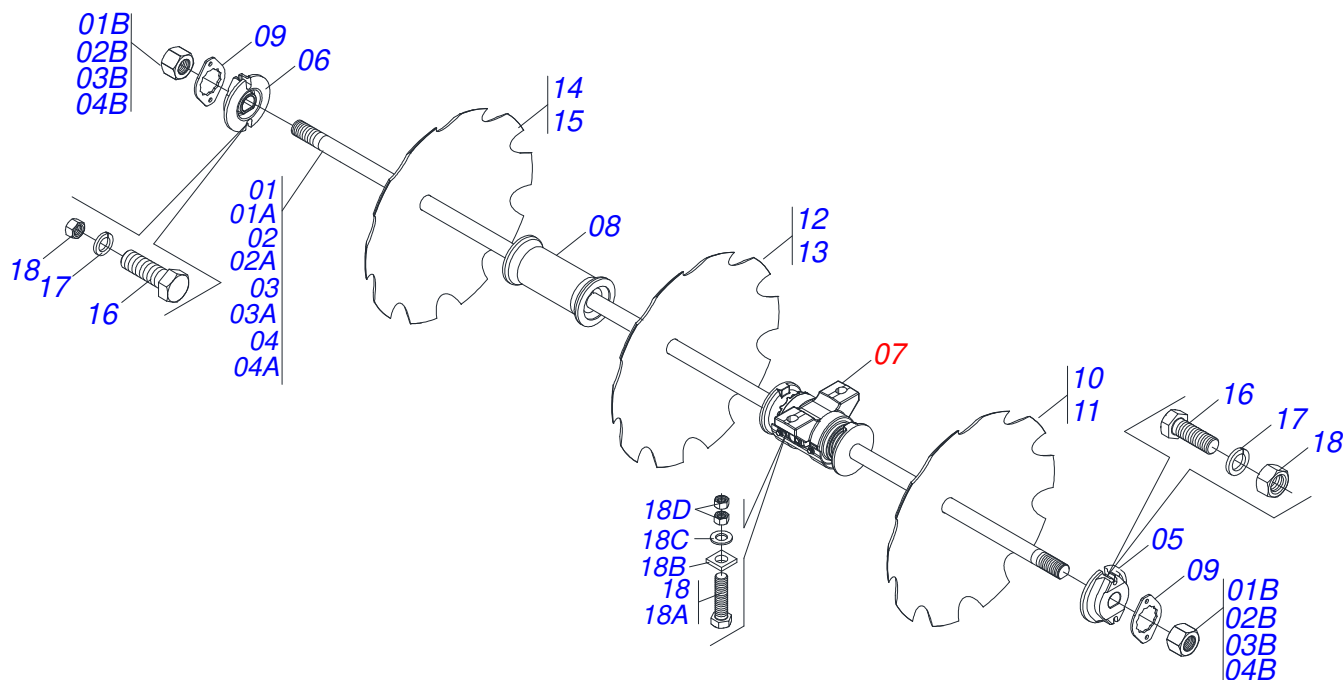
Item	Code	Description	See page	QT
01	0503062227	DRAWBAR JACK		01



Item	Code	Description	See page	QT
001	0503010494	9.0LX 20" X 14 PLY, TIRE		01
002	0503010057	INNER TIRE		01
003	0501068263	2.6"X0.8"X6.0"X 8F0. 9"X8.0" WHEEL		01
004	0503010470	PROTECTION		01



Item	Code	Description	See page	QT
01	0503011627	MALE QUICK COUPLER AGR 1/2 NPT		01
02	0503011882	MALE QUICK COUPLER CAP		01



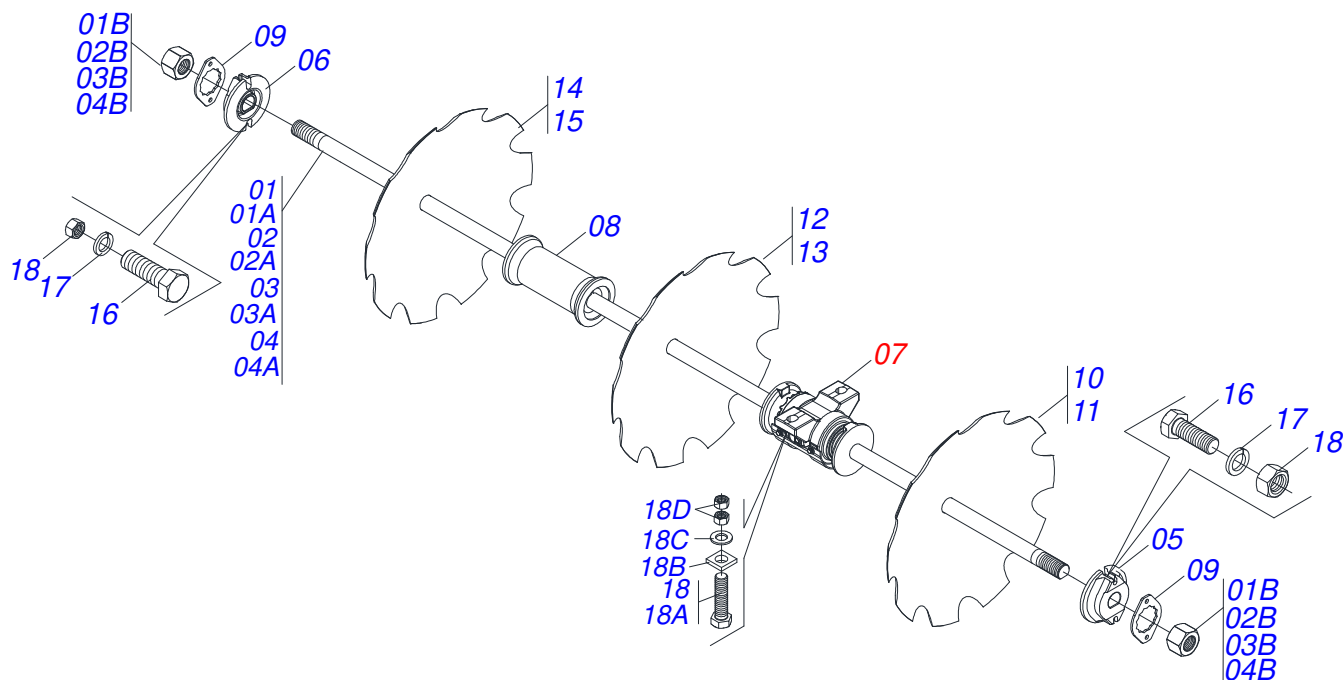
Item	Code	Description	See page	12	14	16	18	20	22
01	0501040693	2-1/2" X 63" AXLE WITH NUTS		00	00	04	02	00	00
01A	0501010358	2-1/2" X 63" AXLE		00	00	01	02	00	00
01B	0502040064	2.1/2"SNC X 70 99 NUT		00	00	02	02	00	00
02	0501040690	2-1/2" X 80" AXLE WITH NUTS		00	00	00	02	04	02
02A	0501010357	2-1/2" X 80" AXLE		00	00	00	01	01	01
02B	0502040064	2.1/2"SNC X 70 99 NUT		00	00	00	02	02	02
03	0501040691	2-1/2" X 97" AXLE WITH NUTS		02	00	00	00	00	02
03A	0501010356	2-1/2" X 97" AXLE		01	00	00	00	00	01
03B	0502040064	2.1/2"SNC X 70 99 NUT		02	00	00	00	00	02
04	0501040692	2-1/2" X 115" AXLE WITH NUTS		00	02	00	00	00	00
04A	0501010355	2-1/2" X 115" AXLE		00	01	00	00	00	00
04B	0502040064	2.1/2"SNC X 70 99 NUT		00	02	00	00	00	00
05	0502010593	2-1/2" EXTERNAL AXLE WASHER		02	02	02	04	04	04
06	0502010592	2-1/2" INNER AXLE WASHER		02	02	02	04	04	04
07	0501046900	430MM X 2-1/2" RD. OIL BATH BEARING	13	04	04	06	08	08	08
07.	0501046926	330MM X 2-1/8" RD. OIL BATH BEARING	12	04	04	06	08	08	08
08	0502010643	13" 2-1/8" SPACER		06	08	08	08	08	10
09	0501010348	2-1/8"TO 2-1/2" NUT LOCK		04	04	04	08	08	08
10	0602044001	32" X 0.3" NOTCHED DISC BLADE		12	14	16	18	20	22
11	0602044004	32" X 0.5" NOTCHED DISC BLADE		12	14	16	18	20	22
12	0602046001	34" X 0.3" NOTCHED DISC BLADE		12	14	16	18	20	22
13	0602046002	34" X 0.5" NOTCHED DISC BLADE		12	14	16	18	20	22
14	0602048001	36"X 0.3"9 NOTCHED DISC BLADE		12	14	16	18	20	22
15	0602048051	36" X 12MM NOTCHED DISC BLADE		12	14	16	18	20	22
16	0503010233	5/8" X 2-1/2" BOLT		24	28	32	36	40	44
17	0503010027	5/8" SPRING WASHER		24	28	32	36	40	44
18	0503010013	5/8" NUT		24	28	32	36	40	44
19	0501041301	1-1/4"X 5-3/4" ASSY BOLT		08	08	16	16	16	16
19A	0501010953	1-1/4" SQUARE WASHER		08	08	16	16	16	16
19B	0501010954	1-1/4" X 5-3/4" BOLT		08	08	16	16	16	16
19C	0531010713	FLAT WASHER		08	08	16	16	16	16



GASPCR - 12/14/16/18/20/22D
FRONT DISC SECTION - 12/14/16/18/20/22D

Page 10
0909091798

Item	Code	Description	See page	12	14	16	18	20	22
19D	0501010087	1.1/4" NUT		16	16	32	32	32	32

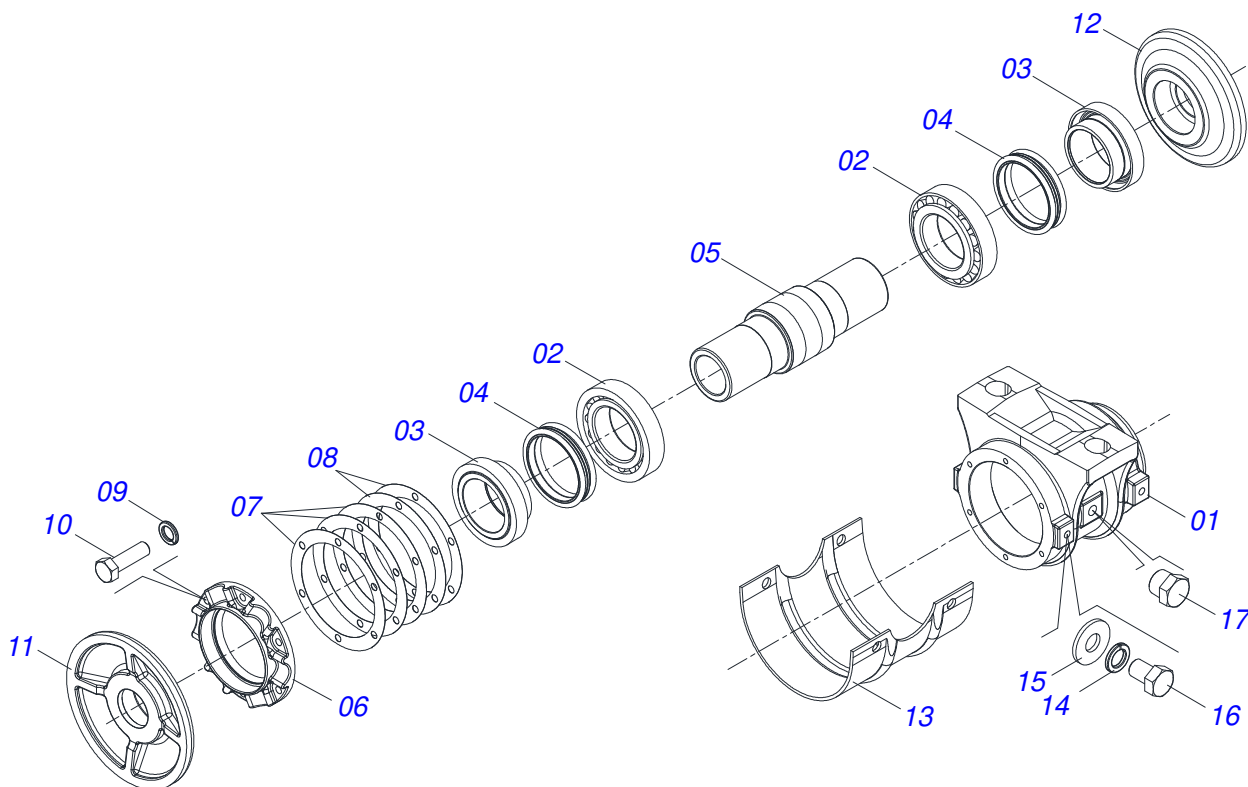


Item	Code	Description	See page	12	14	16	18	20	22
01	0501040693	2-1/2" X 63" AXLE WITH NUTS		00	00	04	02	00	00
01A	0501010358	2-1/2" X 63" AXLE		00	00	01	02	00	00
01B	0502040064	2.1/2"SNC X 70 99 NUT		00	00	02	02	00	00
02	0501040690	2-1/2" X 80" AXLE WITH NUTS		00	00	00	02	04	02
02A	0501010357	2-1/2" X 80" AXLE		00	00	00	01	01	01
02B	0502040064	2.1/2"SNC X 70 99 NUT		00	00	00	02	02	02
03	0501040691	2-1/2" X 97" AXLE WITH NUTS		02	00	00	00	00	02
03A	0501010356	2-1/2" X 97" AXLE		01	00	00	00	00	01
03B	0502040064	2.1/2"SNC X 70 99 NUT		02	00	00	00	00	02
04	0501040692	2-1/2" X 115" AXLE WITH NUTS		00	02	00	00	00	00
04A	0501010355	2-1/2" X 115" AXLE		00	01	00	00	00	00
04B	0502040064	2.1/2"SNC X 70 99 NUT		00	02	00	00	00	00
05	0502010592	2-1/2" INNER AXLE WASHER		02	02	02	04	04	04
06	0502010593	2-1/2" EXTERNAL AXLE WASHER		02	02	02	04	04	04
07	0501046900	430MM X 2-1/2" RD. OIL BATH BEARING	13	04	04	06	08	08	08
07.	0501046926	330MM X 2-1/8" RD. OIL BATH BEARING	12	04	04	06	08	08	08
08	0502010643	13" 2-1/8" SPACER		06	08	08	08	08	10
09	0501010348	2-1/8"TO 2-1/2" NUT LOCK		04	04	04	08	08	08
10	0602044001	32" X 0.3" NOTCHED DISC BLADE		12	14	16	18	20	22
11	0602044004	32" X 0.5" NOTCHED DISC BLADE		12	14	16	18	20	22
12	0602046001	34" X 0.3" NOTCHED DISC BLADE		12	14	16	18	20	22
13	0602046002	34" X 0.5" NOTCHED DISC BLADE		12	14	16	18	20	22
14	0602048001	36"X 0.3"9 NOTCHED DISC BLADE		12	14	16	18	20	22
15	0602048051	36" X 12MM NOTCHED DISC BLADE		12	14	16	18	20	22
16	0503010233	5/8" X 2-1/2" BOLT		24	28	32	36	40	44
17	0503010027	5/8" SPRING WASHER		24	28	32	36	40	44
18	0503010013	5/8" NUT		24	28	32	36	40	44
19	0501041301	1-1/4"X 5-3/4" ASSY BOLT		08	08	16	16	16	16
19A	0501010953	1-1/4" SQUARE WASHER		08	08	16	16	16	16
19B	0501010954	1-1/4" X 5-3/4" BOLT		08	08	16	16	16	16
19C	0531010713	FLAT WASHER		08	08	16	16	16	16

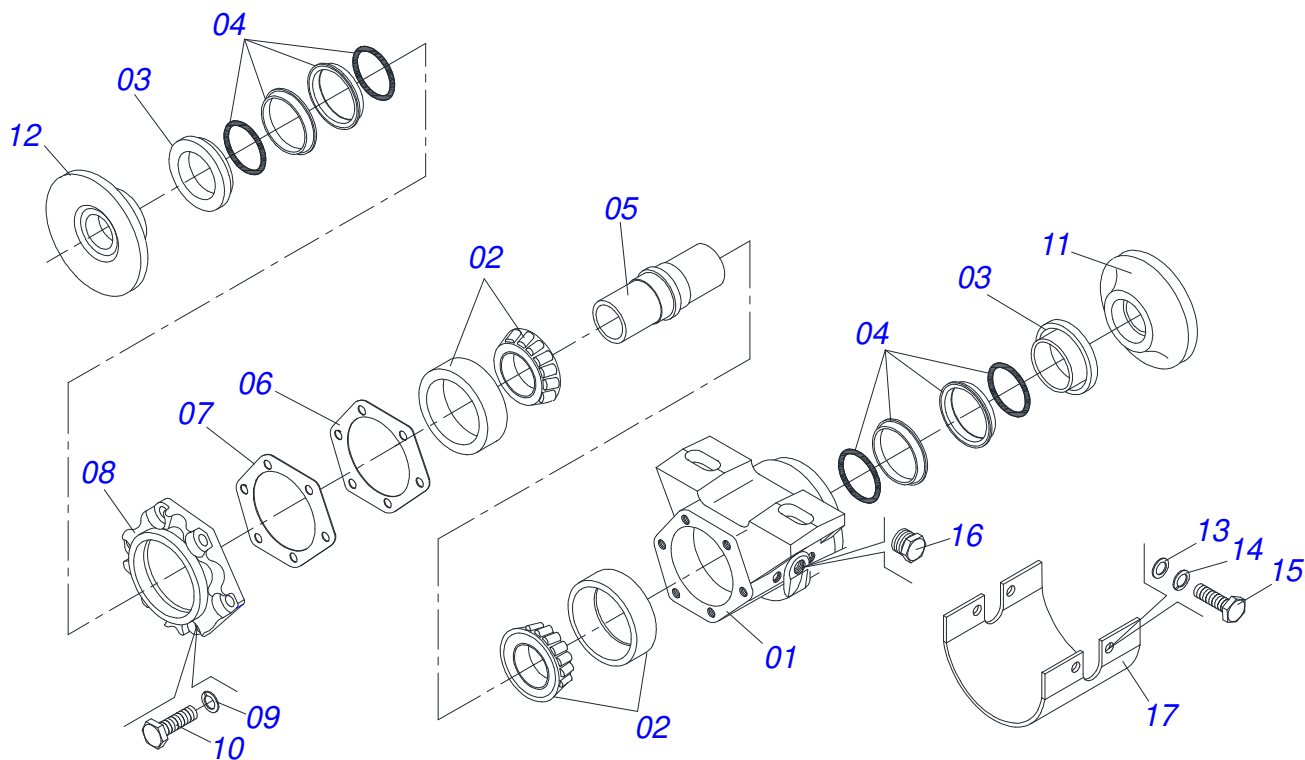


GASPCR - 12/14/16/18/20/22D
REAR DISK SECTION - 12/14/16/18/20/22D

Item	Code	Description	See page	12	14	16	18	20	22	
19D	0501010087	1.1/4" NUT				16	16	32	32	32



Item	Code	Description	See page	QT
001	0502010742	HOUSING DM		01
002	0503010117	32216 ROLLER BEARING		02
003	0502040123	SEAL RETAINER		02
004	0503030028	JB-257 SEAL		02
005	0502040034	BEARING AXLE		01
006	0502010645	HOUSING CAP DM		01
007	0503030536	7.1" X 5.5" X 0.01" JOINT		03
008	0503030686	7.1" X 5.5" X 0.004" JOINT		02
009	0503011443	3/8" SPRING WASHER		06
010	0503010751	C3/8" X 1.1/4" HEX BOLT G.5		06
011	0502040260	OUTER FLANGE		01
012	0502040261	INNER FLANGE		01
013	0511013169	PROTECTION COVER BEARING		01
014	0503010019	1/2" SPRING WASHER		04
015	0511017302	FLAT WASHER		04
016	0503011401	1/2" X 3/4" BOLT		04
017	0503010856	OIL PLUG		02



Item	Code	Description	See page	QT
001	0502012415	HOUSING BEARING		01
002	0503010118	32218 BEARING		02
003	0502040119	SEAL RETAINER		02
004	0503030029	SEAL # LP JB-259		02
005	0502040039	AXLE		01
006	0503030537	8.3" X 6.3" X 0.01" JOINT		02
007	0503030687	8.3" X 6.3" X 0.004" JOINT		01
008	0502010644	HOUSING CAP DM		01
009	0503010019	1/2" SPRING WASHER		06
010	0503010920	1/2" X 1.1/2" BOLT		06
011	0502040165	INNER FLANGE		01
012	0502040164	OUTER FLANGE		01
013	0511017302	FLAT WASHER		04
014	0503010019	1/2" SPRING WASHER		04
015	0503010834	1/2 X 1 BOLT		04
016	0503010856	OIL PLUG		02
017	0521062889	PROTECTION CAP		01
018	3402301247	MINERAL OIL GREASE		01



MARCHESAN

Technical Publications | Elaboration and Revision
JOSÉ DOMINGOS GASPARI

www.marchesan.com.br

