

PARTS CATALOGUE



ROTARY CUTTERS

Code:

0501090840

Product:

ROAT2 3400



Series:

S-0507

Revision:

00

Date Revision:

MAIO/2007



PRODUCTS

Code	Description	
0104090007	ROAT2 3400	S-0507

ATTENTION: IMPORTANT

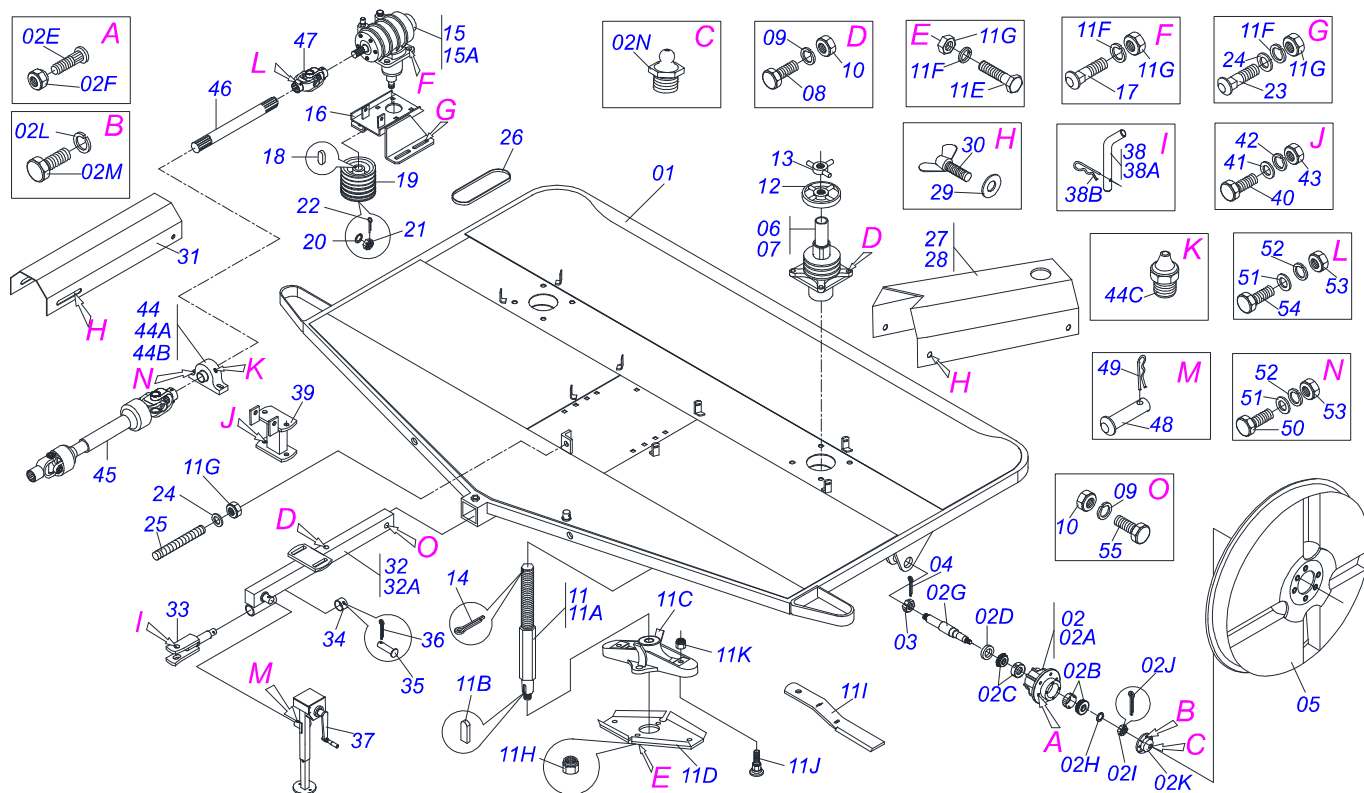
Marchesan S.A. reserves the right to improve and / or modify the technical features of its products, without obligation to do the same with those products already sold and without prior knowledge of the dealer or the consumer.



MARCHESAN

INDEX

0909092980	CHASSI COMPLETO	1
0909092982	MANDREL	2
0501046851	MULTIPLIER	3
0511041259	DRAWBAR JACK ASSY	4
0501047952	DRIVE SHAFT	5
0501044065	UNIVERSAL JOINT	6
0909091430	(SHEET METAL SUPPORT)SPARE	7

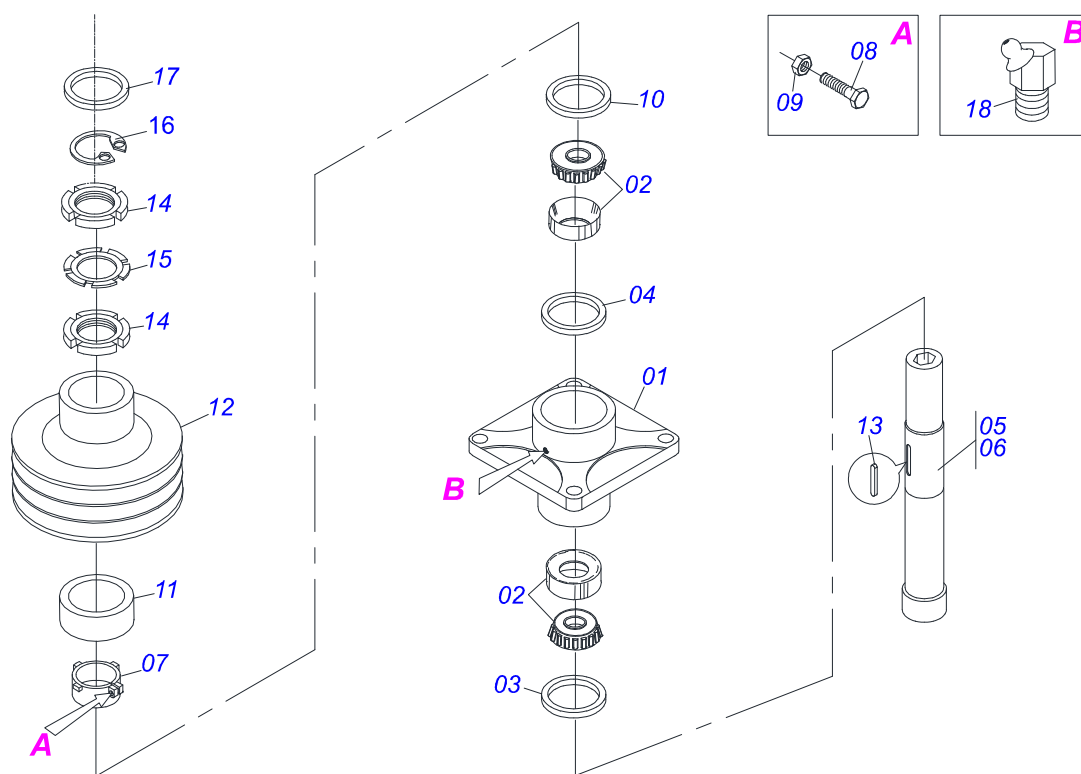


Item	Code	Description	See page
01	0511068799	FRAME ROAT2 3400 S-1003	01
02	0501051634	TSTUB SHAFT & HUB ASSY	02
02A	0502011121	CARRYING WHEEL HUB	01
02B	0503010006	32210 ROLLER BEARING	01
02C	0503010037	30207 ROLLER BEARING	01
02D	0503012928	SEAL	01
02E	0501010127	9/16" X 1-7/8" LUG BOLT	06
02F	0503010035	9/16" CONIC NUT	06
02G	0521010821	2.5" X 16.5" AXLE	01
02H	0501016545	FLAT WASHER	01
02I	0503030009	1" CASTLE NUT	01
02J	0503010018	5/32 X 1-1/2 COTTERPIN	01
02K	0502020591	PROTECCION COVER	01
02L	0503011444	SPRING WASHER	04
02M	0503010358	5/16" X 5/8" BOLT	04
02N	0503010002	1800 GREASE FITTING	01
03	0501011301	1.1/2 UNC 6FPP 2.5/16 NUT	02
04	0503010010	1/4" X 2.1/2" COTTERPIN	02
05	0511061898	WHEEL	02
06	0511046006	BASS MANDREL	01
07	0511046007	MANDREL ASSY	01
08	0501010372	1" X 5-1/2" BOLT	09
09	0503011438	SPRING WASHER	10
10	0501010059	1.5/8 NUT	10
11	0501057738	CUTTERS SUPPORT	02
11A	0551015952	SUPPORT FIXER AXLE	01
11B	0501010536	KEYWAY SQUARE	02
11C	0502012276	ROTARY SUPPORT	01
11D	0541014579	SUPPORT FIXER KNIVES	01
11E	0501010098	3/4" UNC BOLT	02
11F	0503011442	3/4" SPRING WASHER	10

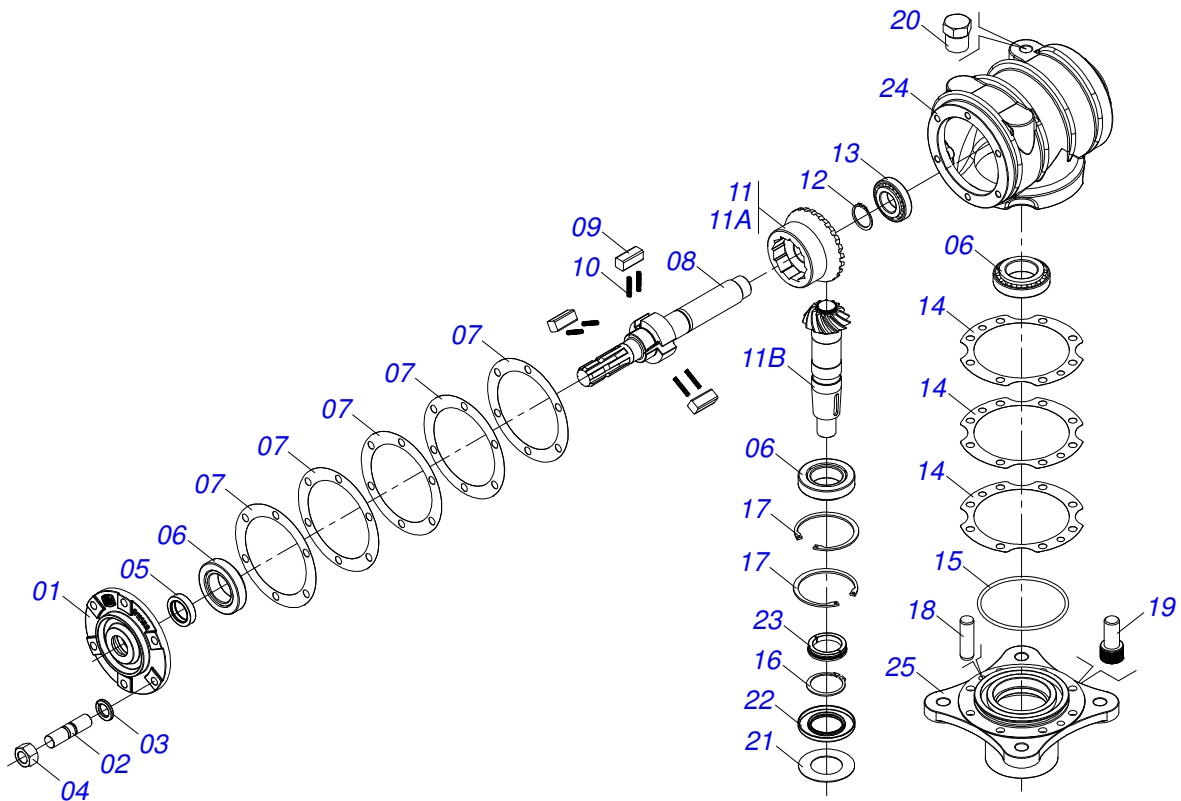


ROAT2 3400
CHASSI COMPLETO

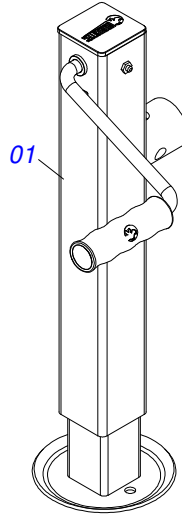
Item	Code	Description	See page
11G	0503010014	3/4" NUT	14
11H	0503010817	1.1/4" SELF LOCKING NUT	01
11I	0622400054	24.5" X 3.94" X 0.5" ROTARY CUTTER	02
11J	0541013328	FASTERNER ROCADORES	02
11K	0503010063	1" SELF-ALIGNING NUT	02
12	0502012459	HANDLE ROAT2	02
13	0502012460	HANDLE LOCK	02
14	0503010534	3/8 X 2-1/2 COTTERPIN	02
15	0501052026	REEL SUPPORT MULTIPLIER	01
15A	0501046851	MULTIPLIER	3 01
16	0501068587	MULTIPLIER SUPPORT	01
17	0511018358	3/4" X 2-1/4"7MM BOLT	04
18	0501010536	KEYWAY SQUARE	02
19	0502011378	6 REEL X 7.5" X 1.97" PULLEY	01
20	0501017779	32 X 60 X 4.75 FLAT WASHER	01
21	0503011052	1.1/4" X 0.77" CASTLE NUT	01
22	0503010131	3/16" X 1-1/2" COTTERPIN	01
23	0501017305	3/4" X 2-1/4" BOLT	04
24	0501010322	FLAT WASHER	05
25	0501013451	282 TENSIONER BODY	01
26	0503010924	C-96 BELT	06
27	0531017932	RIGHT PROTECTION COVER OF THE BELTS	01
28	0531017933	LEFT PROTECTION COVER OF THE BELTS	01
29	0501010984	FLAT WASHER	12
30	0503012904	3/8" BUTTERFLY BOLT	12
31	0531017837	FRONT PROTECTION COVER	01
32	0501057735	SEMI HITCH HEAD	01
32A	0511068803	DRAWBAR ROAT2	01
33	0501069166	TRACTOR HITCH	01
34	0521010681	BUSHING COUPLING BODY	01
35	0521010639	COUPLING SHAFT	01
36	0503010571	1/4" X 1.1/2 COTTERPIN	01
37	0511041259	DRAWBAR JACK ASSY	4 01
38	0501040343	DRAWBOLT ASSY	01
38A	0521010453	AXI SHAFT	01
38B	0503031035	HAIR PIN	01
39	0501061174	BEARING SUPPORT	01
40	0503010233	5/8" X 2-1/2" BOLT	02
41	0501012140	FLAT WASHER	02
42	0503010027	5/8" SPRING WASHER	02
43	0503010013	5/8" NUT	02
44	0501044307	AGRICULTURAL BEARING ASSY	01
44A	0503010596	AGRICULTURAL HOUSING BEARING	01
44B	0503010597	BALL BEARING	01
44C	0503010691	1/4" GREASE FITTING	01
45	0501047952	DRIVE SHAFT	5 01
46	0511011543	DRIVE AXLE	01
47	0501044065	UNIVERSAL JOINT	6 01
48	0521010549	COUPLING SHAFT	01
49	0503030168	HAIR PIN	01
50	0503010734	1/2" X 2-1/2" BOLT	02
51	0511017302	FLAT WASHER	04
52	0503010019	1/2" SPRING WASHER	04
53	0503010060	1/2" NUT	04
54	0503010479	BOLT	02
55	0501010392	1" X 5" BOLT	01



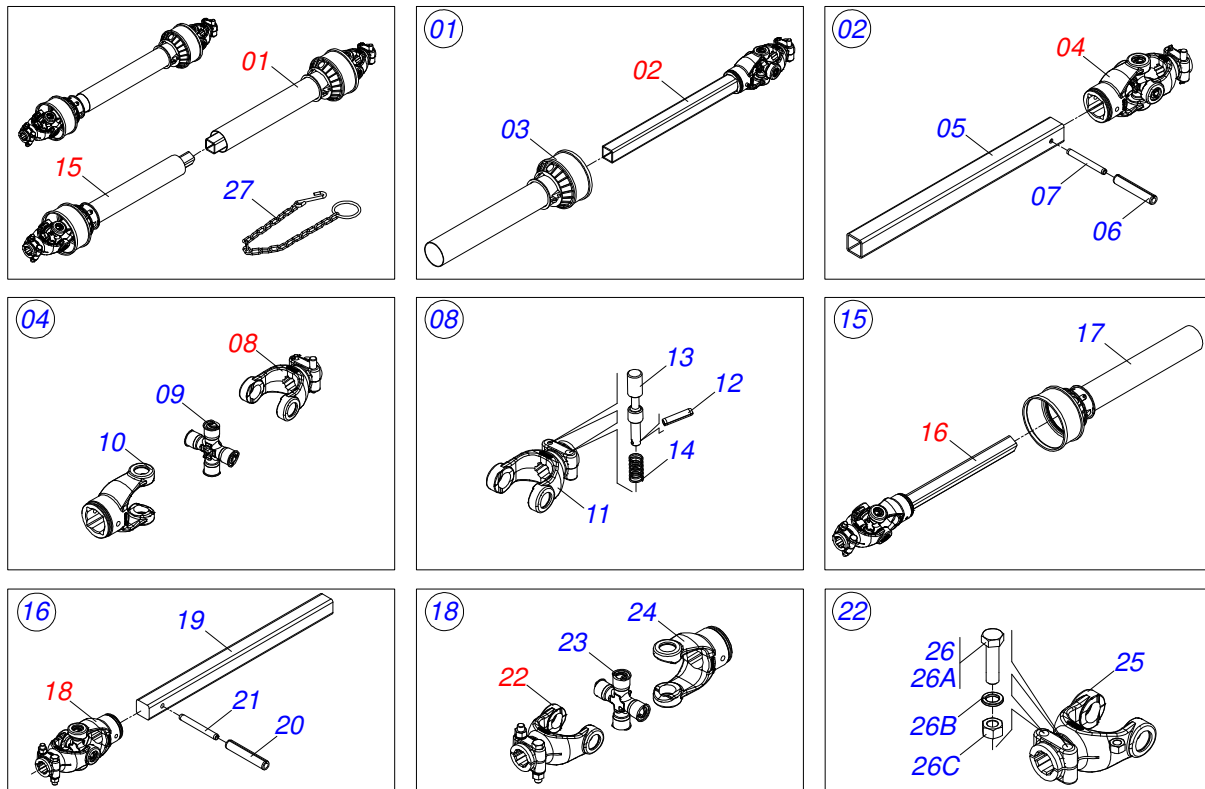
Item	Code	Description	See page
01	0502012461	MANDREL BODY	01 01
02	0503014559	ROLLER BEARING	02 02
03	0503010095	01103-B SEAL	02 02
04	0503014560	SEAL	01 01
05	0502040767	MANDREL AXLE BODY	01 00
06	0502040766	MANDREL AXLE BODY	00 01
07	0502040768	ADJUSTMENT BUSHING	01 01
08	0503010751	C3/8" X 1.1/4" HEX BOLT G.5	02 02
09	0503010026	3/8" NUT	02 02
10	0551015954	WASHER	01 00
11	0551015955	84 X 105 X 82,6 SLEEVE	00 01
12	0502012463	3 REEL 210 PULLEY	01 01
13	0501018488	3/8" X 3.1" KEYWAY SQUARE	02 02
14	0503010554	KM- 16 LOCKNUT	02 02
15	0503010553	LOCK WASHER	01 01
16	0503014558	502135 CLAMPING RING (FOR HOLE)	01 01
17	0551015956	FLAT WASHER	01 01
18	0503010003	1845 GREASE FITTING	01 01



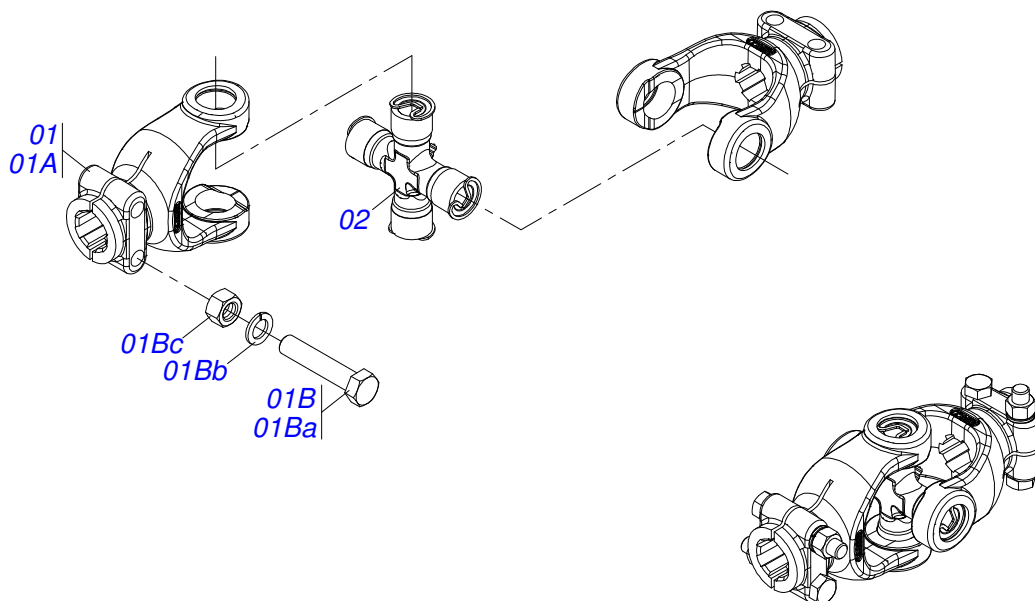
Item	Code	Description	See page	QT
01	0502011152	SMALLER COVER		01
02	0503030084	1/2" X 1/2" X 2.0" STUD		06
03	0503011440	SPRING WASHER		06
04	0503010028	1/2" NUT		06
05	0503011171	00912-BRG SEAL		01
06	0503010006	32210 ROLLER BEARING		03
07	0503030783	7.1" X 5.3" X 0.008" JOINT		05
08	0503050063	UPPER AXLE		01
09	0501010649	RATCHET CLICK		03
10	0503030051	0.2" X 1" X 0.1" COMPRESSION SPRING		06
11	0503060210	CROWN PINION SET		01
11A	0503050074	25Z CONICAL GEAR		01
11B	0503061048	PINION		01
12	0503010217	501040 CLAMPING RING (FOR AXLE)		01
13	0503010037	30207 ROLLER BEARING		01
14	0503030785	7.9" X 5.9" X 0.008" JOINT		03
15	0503010286	2-355 N 3006-9B O'RING		01
16	0503010396	501060 CLAMPING RING (FOR AXLE)		01
17	0503011190	SEAL RING		02
18	0503017877	PIN GUIDE		02
19	0503010562	1/2" X 1" BOLT		08
20	0503031604	1/2" BSP PLUG		01
21	0521018064	FLAT WASHER		01
22	0503011047	5089 SEAL		01
23	0511010142	LOCK RING		01
24	0502010984	LEFT MULTIPLIER BOX		01
25	0502011393	LOWER HUB		01



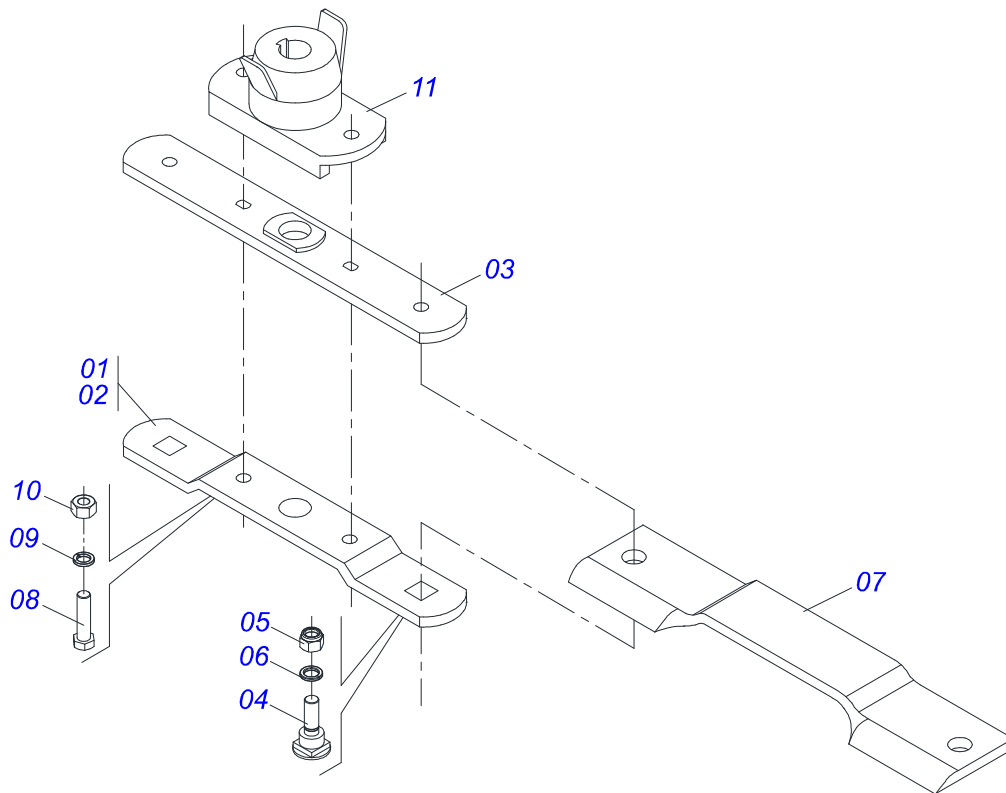
Item	Code	Description	See page	QT
01	0503062157	HEADER JACK		01



Item	Code	Description	See page	QT
01	0501051705	UNIVERSAL JOINT WITH SLEEVE/PROT		01
02	0501051707	UNIVERSAL JOINT WITH SLEEVE		01
03	0503012084	PROTECTION FOR UNIV JOINT AND SLEEV		01
04	0501051708	UNIVERSAL JOINT		01
05	0511010332	23" X 1.8" SQUARE SLEEVE		01
06	0503010843	0.4" X 3.3" SPRING PIN		01
07	0503011878	0.2" X 3.3" SPRING PIN		01
08	0501050334	1-60 TERMINAL WITH QUICK HITCH		01
09	0503010837	CARDAN CROSSPIECE		01
10	0502011422	2-60 TERMINAL		01
11	0502010568	1-60 STRIATED 1.3/8" TERMINAL		01
12	0503010838	0.1" X 0.8" SPRING PIN		02
13	0503037375	PIN QUICK COUPLING		02
14	0503030518	0.5"X1.0"X 0.1" COMPRESSION SPRING		02
15	0501051706	UNIVERSAL JOINT WITH AXLE/PROT		01
16	0501051709	UNIVERSAL JOINT WITH SHAFT		01
17	0503012085	PROTECTION FOR UNIV JOINT AND AXLE		01
18	0501051710	UNIVERSAL JOINT		01
19	0511010326	1.4" X 23" SQUARE SHAFT		01
20	0503011069	0.4" X 2.8" SPRING PIN		01
21	0503011805	0.2" X 2.8" SPRING PIN		01
22	0501052516	T6-60 TERMINAL WITH SCREW		01
23	0503010837	CARDAN CROSSPIECE		01
24	0502011424	3-60 TERMINAL		01
25	0502010830	6-60 STRIATED 1.3/8" TERMINAL		01
26	0501047756	1/2" X 3" SET PARTS		02
26a	0503010479	BOLT		01
26b	0503010019	1/2" SPRING WASHER		01
26c	0503010060	1/2" NUT		01
27	0503012023	CHAIN FOR PROTECTION		02



Item	Code	Description	See page	QT
01	0501052516	T6-60 TERMINAL WITH SCREW		02
01A	0502010830	6-60 STRIATED 1.3/8" TERMINAL		02
01B	0501047756	1/2" X 3" SET PARTS		02
01Ba	0503010479	BOLT		02
01Bb	0503010019	1/2" SPRING WASHER		02
01Bc	0503010060	1/2" NUT		02
02	0503010837	CARDAN CROSSPIECE		01



Item	Code	Description	See page	QT
01	0501056326	SUPPORT WITH ROTARY CUTTER BLADES		01
02	0561017368	ROTARY LOWER SUPPORT		01
03	0561017308	SUPPORT UPPER BASE		01
04	0511019000	BOLT		02
05	0503010812	7/8" UNF SELF LOCKING NUT		02
06	0503011447	SPRING WASHER		02
07	0622400057	21.6" X 3.94" X 0.5" ROTARY CUTTER		02
08	0503010901	3/4UNC 3.1/2 BOLT		02
09	0503010023	3/4" SPRING WASHER		02
10	0503010014	3/4" NUT		02
11	0502012453	SUPPORT FLANGE		01



www.marchesan.com.br



Technical Publications | Elaboration and Revision
LUIZ CANDIDO