

PARTS CATALOG

AGRICULTURAL FRONT LOADER

PCA 800 VALMET BM 85 A 100-4
S-0302

Code: 0501090762



Series: S-0805

Review: AGOSTO/2005

ORIGINAL PARTS
TATU

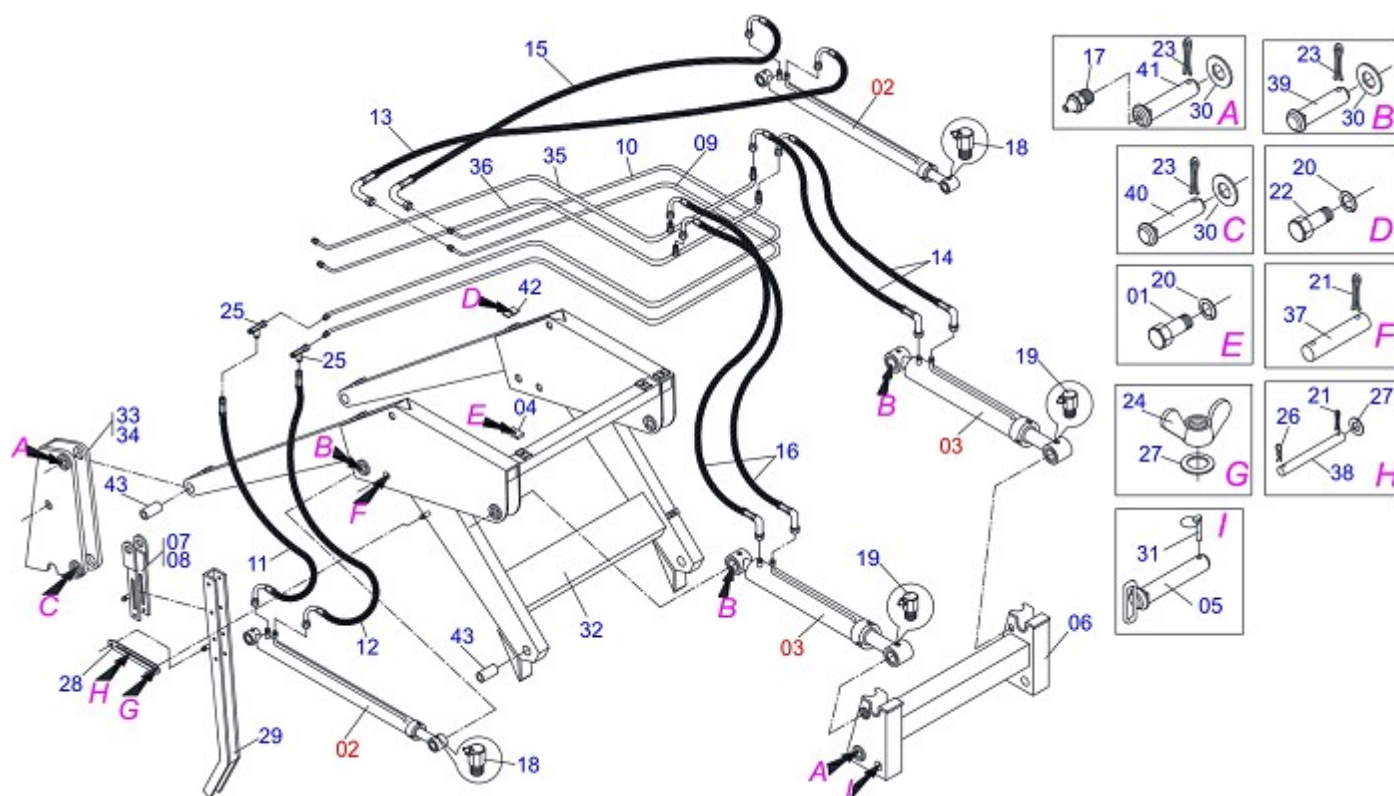


INDEX

0909091334	MOBILE SUPPORT ASSY PCA 800 VTR	1
0909091336	MOBILE SUPPORT PCA 800 (BT SC) VTR	2
0909091335	HYDRAULIC CIRCUIT BM 85A100_4 SHT	3
0909091337	HYDRAULIC CIRCUIT BM 85A100_4 BT	4
0511042640	1.75" X 3 X 32.28" HYDRAULIC CYLINDER	5
0511040725	1.75" X 3.37 X 3.56"HYDRAULIC CYLINDER	6
0909091338	HYDRAULIC CIRCUIT BM 85A100_4 BT CS	7
0501048045	PAC 800/1100 COMPL 1900 P ALT S0498	8
0501048065	LDA 2400 COMPL P/PCA 800/1100	9
0501048063	EAG 800/1100 9 TEETH ASSY S-0597	10
0501048091	GSA 800/1100 ASSY	11
0501047447	1.5 X 2.5 X 16" X 9" HYDRAULIC CYLINDER	12
0501048740	SAE COMPLETE FOR PCA 600/800/1100	13
0501048741	SAB COMPLETE FOR PCA 600/800/1100	14

ATTENTION: **IMPORTANT**

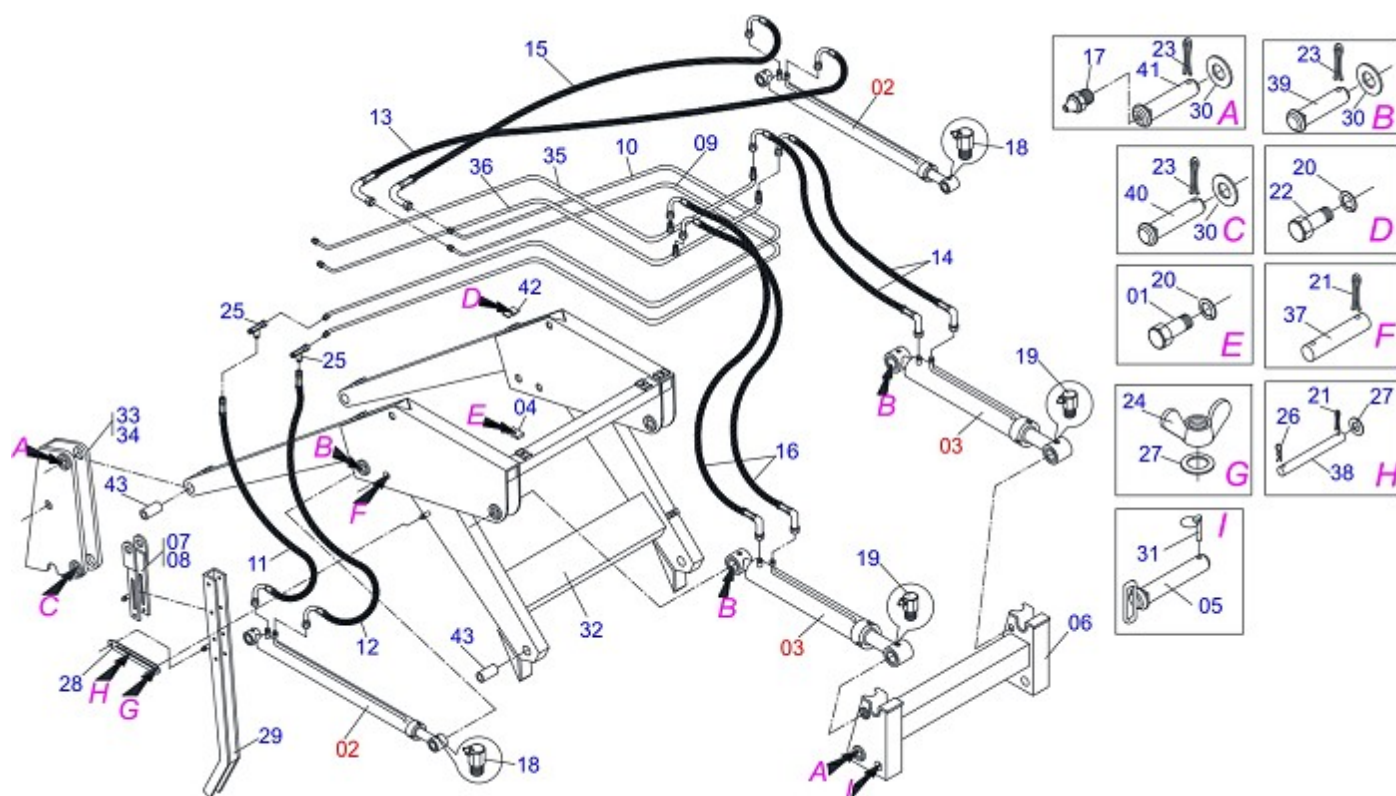
MARCHESAN RESERVES THE RIGHT AT ANY TIME TO MAKE IMPROVEMENTS IN THE DESIGN, MATERIAL OR SPECIFICATIONS OF MACHINERY, EQUIPMENT OR PARTS WITHOUT THEREBY BECOMING LIABLE TO MAKE SIMILAR CHANGES IN MACHINERY, EQUIPMENT OR PARTS PREVIOUSLY SOLD.



Item	Code	Description	
01	0501010096	3/8" X 2" BOLT	04
02	0511040725	1.75" X 3.37 X 3.56"HYDRAULIC CYLINDER	02
03	0511042640	1.75" X 3 X 32.28" HYDRAULIC CYLINDER	02
04	0501053834	QUICK CONECTION (MALE) 1/2NPT	02
05	0501053835	FEMALE QUICK COUPLER	02
06	0501069146	JOINT SUPPORT PCA 800	01
07	0501069157	PLOUGH SUPPORT	01
08	0501069158	PLOUGH SUPPORT	01
09	0501069860	OUTER OIL TUBE	01
10	0501069861	INNER OIL TUBE	01
11	0501080150	3/8" X 31.49" HOSE ASSY	01
12	0501080413	3/8" X 27" TR-TC HOSE ASSY	01
13	0501080766	3/8" X 27.56" TC-TC HOSE	01
14	0501080688	3/8" X 25" TC-TC 90G HOSE	04
15	0501080723	3/8" X 31.49" TC-TC HOSE	01
16	0501080777	LH 3/8" X 25.9" TC-TC HOSE	02
17	0503010002	GREASE FITTING	06
18	0503010003	3/8" GREASE FITTING	02
19	0503010004	GREASE FITTING	02
20	0503010025	3/8" SPRING WHASHER	06
21	0503010131	3/16" X 1-1/2" COTTERPIN	10
22	0503010237	3/8" X 1" HEX BOLT G5	02
23	0503010534	3/8" X 2-1/2" COTTERPIN	10
24	0503010918	1/2" UNC BUTTERFLY NUT	02
25	0503011968	"T" ADAPTOR WITH GIRAT NUT 3/8	02
26	0503030168	HAIR PIN	04
27	0511017302	FLAT WASHER	14
28	0511019634	CONTROL LOCK	02
29	0511019660	PLOUGH SUPPORT BODY	02
30	0511019685	FLAT WASHER	12
31	0511019876	1/2" NIPPLE	02
32	0501069453	MOBILE SUPPORT	01
33	0511061354	RH MOBILE TOWER	01



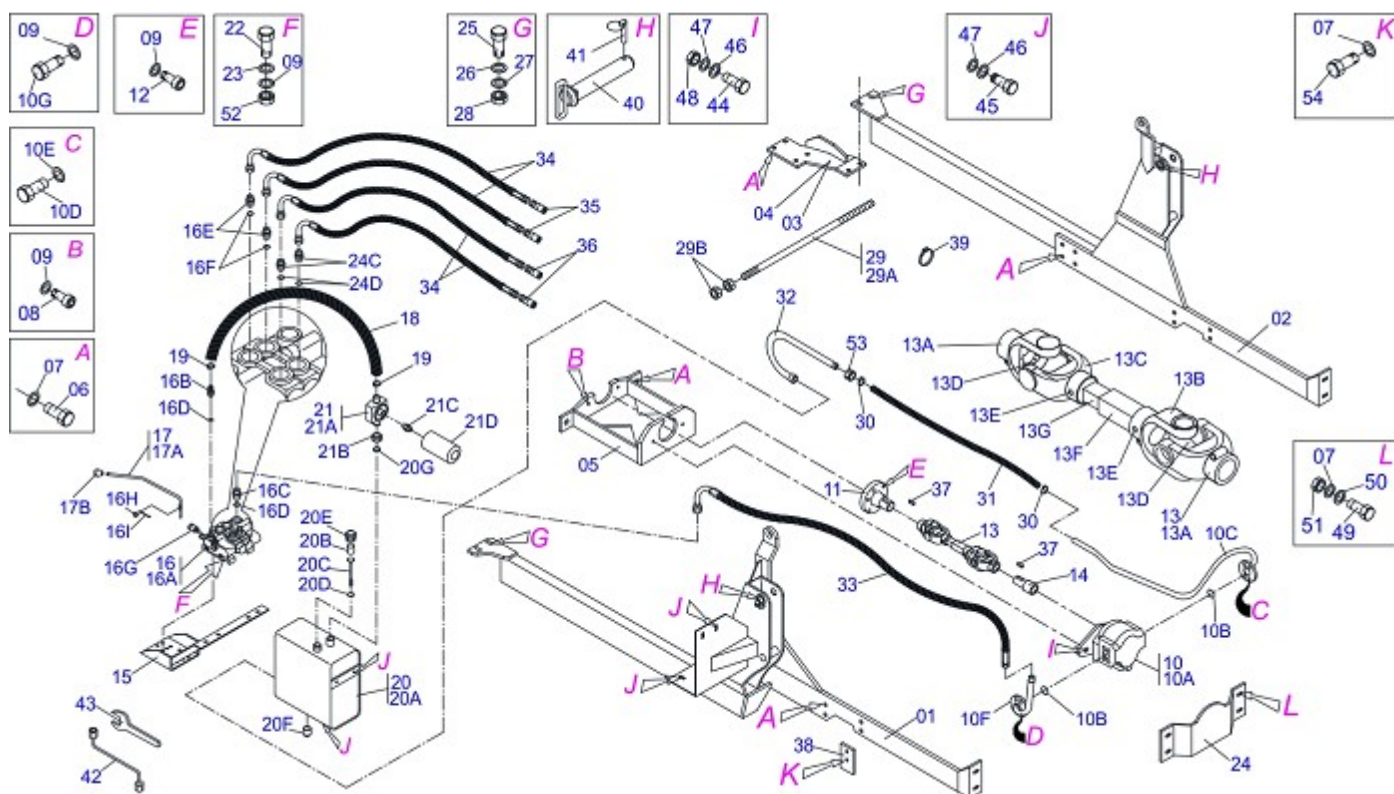
Item	Code	Description	
34	0511061355	LH MOBILE TOWER	01
35	0511061630	RIGHT OIL TUBE	01
36	0511061631	LH OIL TUBE	01
37	0521012777	COUPLING SHAFT	02
38	0521012823	COUPLING SHAFT	04
39	0521012868	1.4" X 5" PIVOT SHAFT	04
40	0521012869	COUPLING SHAFT	02
41	0521012870	1.46" X 6.18" PIVOT SHAFT	04
42	0531011180	UPPER CLAMP BODY	02
43	0521011903	1.48" X 1.77" X 3.93" SLEEVE INTER	04
44	0502010477	UPPER CLAMP BODY	08
45	0511064410	1.5" X 8.1" COUPLING SHAFT	02
46	0503030430	7/16 X 2" PIN LOCK	02
47	0521010514		08



Item	Code	Description	QT
01	0501010096	3/8" X 2" BOLT	04
02	0511042640	1.75" X 3 X 32.28" HYDRAULIC CYLINDER	02
03	0511040725	1.75" X 3.37 X 3.56" HYDRAULIC CYLINDER	02
04	0502010477	UPPER CLAMP BODY	08
05	0511064410	1.5" X 8.1" COUPLING SHAFT	02
06	0501069146	JOINT SUPPORT PCA 800	01
07	0501069157	PLOUGH SUPPORT	01
08	0501069158	PLOUGH SUPPORT	01
09	0501069860	OUTER OIL TUBE	01
10	0501069861	INNER OIL TUBE	01
11	0501080150	3/8" X 31.49" HOSE ASSY	01
12	0501080413	3/8" X 27" TR-TC HOSE ASSY	01
13	0501080766	3/8" X 27.56" TC-TC HOSE	01
14	0501080688	3/8" X 25" TC-TC 90G HOSE	02
15	0501080723	3/8" X 31.49" TC-TC HOSE	01
16	0501080777	LH 3/8" X 25.9" TC-TC HOSE	02
17	0503010002	GREASE FITTING	06
18	0503010003	3/8" GREASE FITTING	02
19	0503010004	GREASE FITTING	02
20	0503010025	3/8" SPRING WHASHER	06
21	0503010131	3/16" X 1-1/2" COTTERPIN	10
22	0503010237	3/8" X 1" HEX BOLT G5	02
23	0503010534	3/8" X 2-1/2" COTTERPIN	10
24	0503010918	1/2" UNC BUTTERFLY NUT	02
25	0503011968	"T" ADAPTOR WITH GIRAT NUT 3/8	02
26	0503030168	HAIR PIN	04
27	0511017302	FLAT WASHER	14
28	0511019634	CONTROL LOCK	02
29	0511019660	PLOUGH SUPPORT BODY	02
30	0511019685	FLAT WASHER	12
31	0503030430	7/16 X 2" PIN LOCK	02
32	0501069453	MOBILE SUPPORT	01
33	0511061354	RH MOBILE TOWER	01



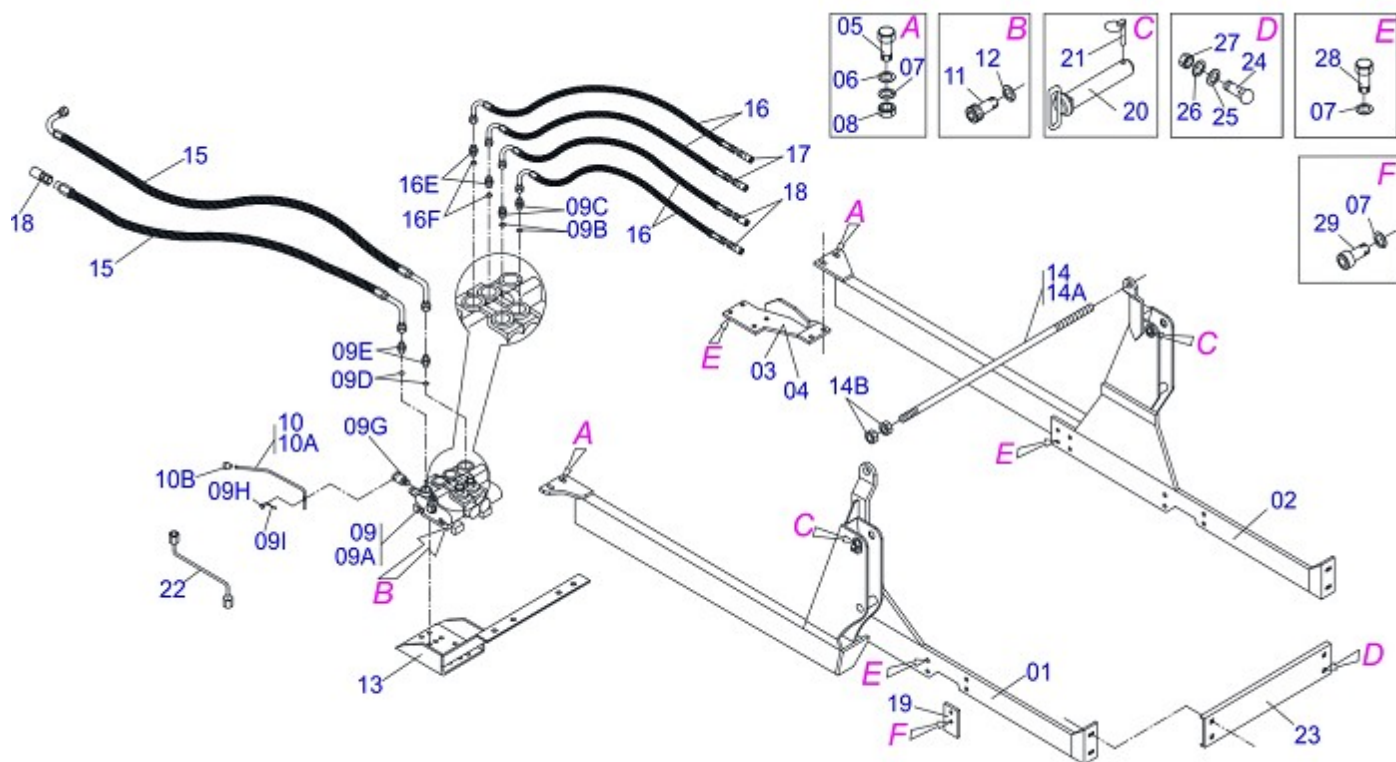
Item	Code	Description	QT
34	0511061355	LH MOBILE TOWER	01
35	0501069857	RIGHT RIGHT OIL TUBE	01
36	0501069858	LH RIGHT OIL TUBE	01
37	0521012777	COUPLING SHAFT	02
38	0521012823	COUPLING SHAFT	04
39	0521012868	1.4" X 5" PIVOT SHAFT	04
40	0521012869	COUPLING SHAFT	02
41	0521012870	1.46" X 6.18" PIVOT SHAFT	04
42	0531011180	UPPER CLAMP BODY	02
43	0521011903	1.48" X 1.77" X 3.93" SLEEVE INTER	04



Item	Code	Description	
01	0511063839	RIGHT FRAME	01
02	0511063840	LEFT FRAME	01
03	0501063145	RH FRAME BRACKET	01
04	0501063146	LH FRAME BRACKET	01
05	0511063350	PUMP SUPPORT	01
06	0503011188	M16 X 2 X 50 BOLT	02
07	0503010027	5/8" SPRING WASHER	02
08	0503010728	M10 X 1.2" BOLT	02
09	0503010025	3/8" SPRING WHASHER	09
10	0501052012	PUMP WITH TUBE	01
10A	0503060045	40L 1/2" PUMP	01
10B	0503010173	2-220 N 3006-9B O'RING	02
10C	0501069711	PUMP SUCTION TUBE	01
10D	0503010355	7/16" X 1" BOLT	04
10E	0503010180	7/16" SPRING WASHER	04
10F	0501069712	PUMP PRESSURE TUBE	01
10G	0503010237	3/8" X 1" HEX BOLT G5	04
11	0521016647	COUPLING FLANGE	01
12	0503011313	M8 X 2" BOLT	06
13	0511040786	DRIVE SHAFT	01
13A	0502010886	10-20 TERMINAL	02
13B	0502010559	2-20 TERMINAL	01
13C	0502010562	3-20 TERMINAL	01
13D	0503010835	CARDAN CROSSPIECE	02
13E	0503010839	03" X 0.6" ELASTIC PIN	02
13F	0531014423	16.73 SQ 0.89 SLEEVE	01
13G	0531014424	0.9" X 15.35 SQUARE SHAFT	01
14	0511062516	3.1" X 1-1/8" AXLE	01
15	0501069824	SUPPORT CONTROL VALVE	01
16	0501048916	1/2" DOUBLE COMMAND ASSY	01
16A	0503060081	1/2" DOUBLE COMMAND	01
16B	0501010591	HOSE NIPPLE	01
16C	0501010589	1-1/16 NIPPLE	01



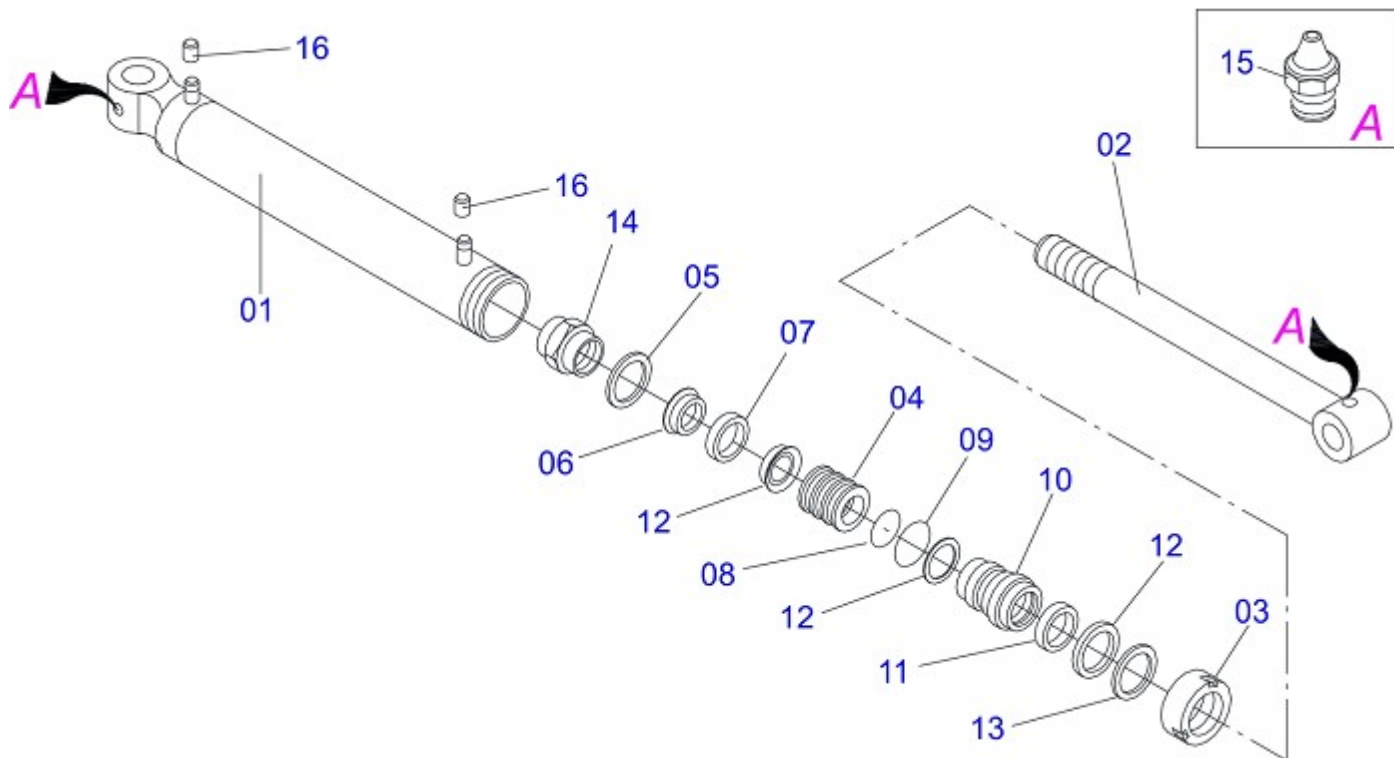
Item	Code	Description	
16D	0503010602	2-211 N 3006-9B O'RING	02
16E	0511010111	7/8" NIPPLE	04
16F	0503010045	2-116 N 3006-9B O'RING	04
16G	0503030347	UPPER LEVER ASSY (SAUER DANFOSS)	02
16H	0521010533	0.3" X 1" COUPLING SHAFT	02
16I	0503010140	1/8" X 3/4" COTTERPIN	02
17	0501048023	CONTROL VALVE	02
17A	0503060081	1/2" DOUBLE COMMAND	01
17B	0503030878	LEVER CRANK	01
18	0501018430	1" X 35.4" TC-TM HOSE ASSY	01
19	0503010184	1-1/4" TO 1-1/2" CLAMP	02
20	0501047807	RESERVOIR OIL ASSY	01
20A	0501068880	RESERVOIR OIL	01
20B	0503030044	FILTERING ELEMENT	01
20C	0501060975	OIL GAGE	01
20D	0503010185	2-221 N 3006-9B O'RING	01
20E	0502020472	TANK COVER BODY	01
20F	0503031604	1/2" BSP PLUG	01
20G	0503010046	2-216 N 3006-9B O'RING	01
21	0501041108	RETURNING FILTER ASSY	01
21A	0502050002	RETURNING FILTER HEAD	01
21B	0501010594	1" NUT HEX	01
21C	0501010595	1" NF NIPPLE	01
21D	0503010183	RETURNING FILTER	01
22	0501010080	3/8" X 1-1/2" BOLT	03
23	0501010984	FLAT WASHER	03
24	0531015992	PUMP PROTECTION SUPPORT	01
25	0501010500	3/4" X 3" BOLT	04
26	0501010322	FLAT WASHER	04
27	0503010023	3/4" SPRING WASHER	18
28	0503010014	3/4" NUT	04
29	0501041652	1.1/4" X 31.88" ROD ASSY	01
29A	0501014916	1.1/4" X 31.88" ROD	01
29B	0501010087	1.1/4" UNC NUT	02
30	0503010243	1-1/2" TO 2" CLAMP	02
31	0501014834	1-1/4" X 49" AB-AB HOSE	01
32	0501063383	TANK OUTER TUBE	01
33	0501080705	3/4" X 118" TR-TC HOSE	01
34	0501080601	3/8" X 66.9 TC-TM HOSE	04
35	0501053835	FEMALE QUICK COUPLER	02
36	0501053834	QUICK CONECTION (MALE) 1/2NPT	02
37	0503031031	1/4" KEYWAY SQUARE	02
38	0531014070	BEATER BM VTR	02
39	0503010246	2" TO 2 1/2" CLAMP	03
40	0511060085	1.47" X 9.25" PIVOT SHAFT	02
41	0503030430	7/16 X 2" PIN LOCK	02
42	0501068213	5/8" WRENCH DOUBLE	01
43	0511010153	2-5/16" FIXED WRENCH	01
44	0503011082	1/2" X 1.3/4" BOLT	02
45	0501010161	1/2" X 1-1/4" BOLT	04
46	0511017302	FLAT WASHER	06
47	0503010019	1/2" SPRING WASHER	06
48	0503010060	1/2" NUT	02
49	0503012407	5/8" X 1-1/2" BOLT	04
50	0501012140	FLAT WASHER	10
51	0503010013	5/8" NUT	20
52	0503010026	3/8" NUT	03
53	0501016309	2" 1X 2.5/16" NUT	01
54	0503011730	M16 X 2 X 60 BOLT	04



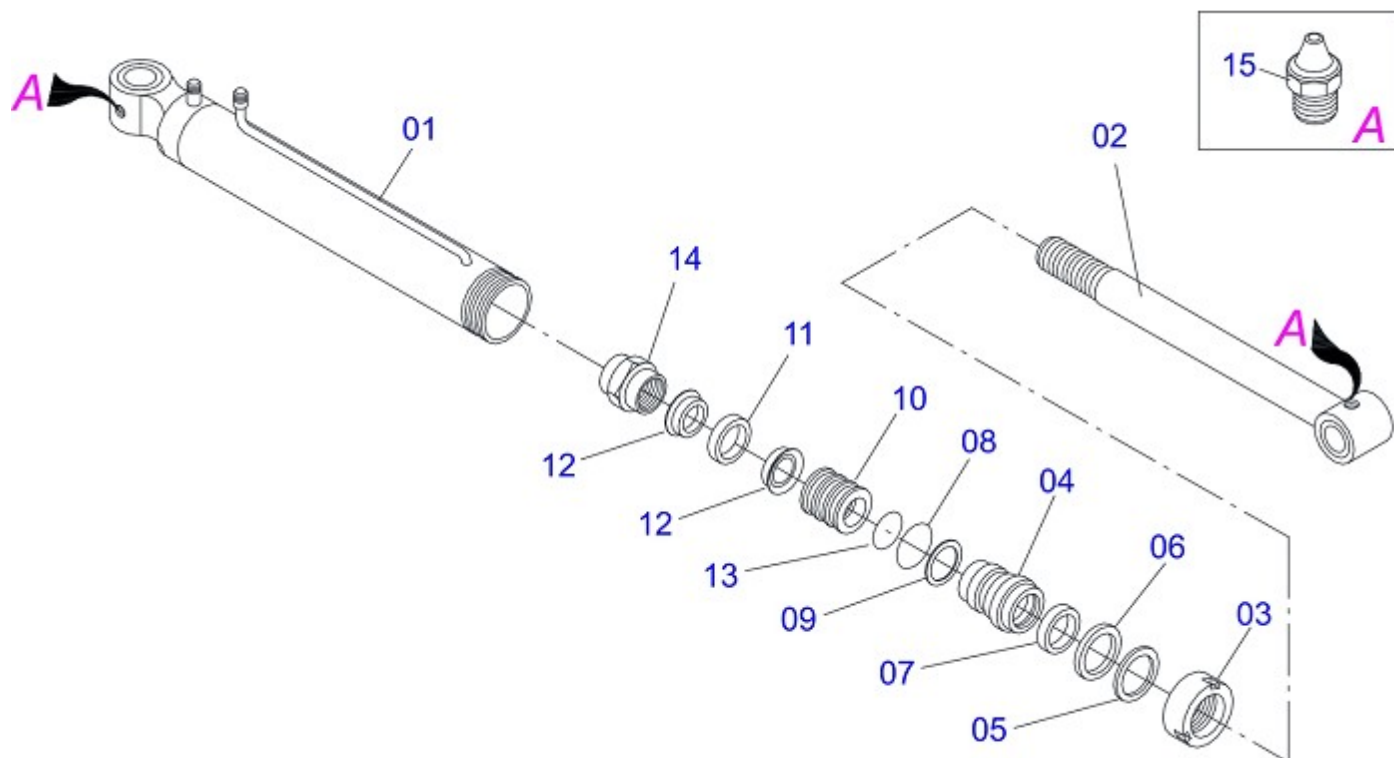
Item	Code	Description	
01	0511063839	RIGHT FRAME	
02	0511063840	LEFT FRAME	01
03	0501063145	RH FRAME BRACKET	01
04	0501063146	LH FRAME BRACKET	01
05	0501010500	3/4" X 3" BOLT	04
06	0501010322	FLAT WASHER	04
07	0503010023	3/4" SPRING WASHER	04
08	0503010014	3/4" NUT	04
09	0501048916	1/2" DOUBLE COMMAND ASSY	01
09A	0503060081	1/2" DOUBLE COMMAND	01
09B	0511018014	7/8"NF X 1.1/16 UN NIPPLE	02
09C	0503010602	2-211 N 3006-9B O'RING	02
09D	0511010111	7/8" NIPPLE	04
09E	0503010045	2-116 N 3006-9B O'RING	04
09F	0503030347	UPPER LEVER ASSY (SAUER DANFOSS)	02
09G	0501010593	0.3" X 1" X 1/2" X 1.1 PIN	02
09H	0503010140	1/8" X 3/4" COTTERPIN	02
10	0501048023	CONTROL VALVE	02
10A	0511060695	CONTROL VALVE	01
10B	0503030878	LEVER CRANK	01
11	0503011313	M8 X 2" BOLT	06
12	0503010025	3/8" SPRING WHASHER	09
13	0501069824	SUPPORT CONTROL VALVE	01
14	0501041652	1.1/4" X 31.88" ROD ASSY	01
14A	0501014916	1.1/4" X 31.88" ROD	01
14B	0501010087	1.1/4" UNC NUT	02
15	0501080496	1/2" X 145.6" HOSE ASSY	02
16	0501080601	3/8" X 66.9 TC-TM HOSE	04
17	0501053835	FEMALE QUICK COUPLER	02
18	0501053834	QUICK CONECTION (MALE) 1/2NPT	02
19	0531014070	BEATER BM VTR	02
20	0511060085	1.47" X 9.25" PIVOT SHAFT	02
21	0503030430	7/16 X 2" PIN LOCK	02



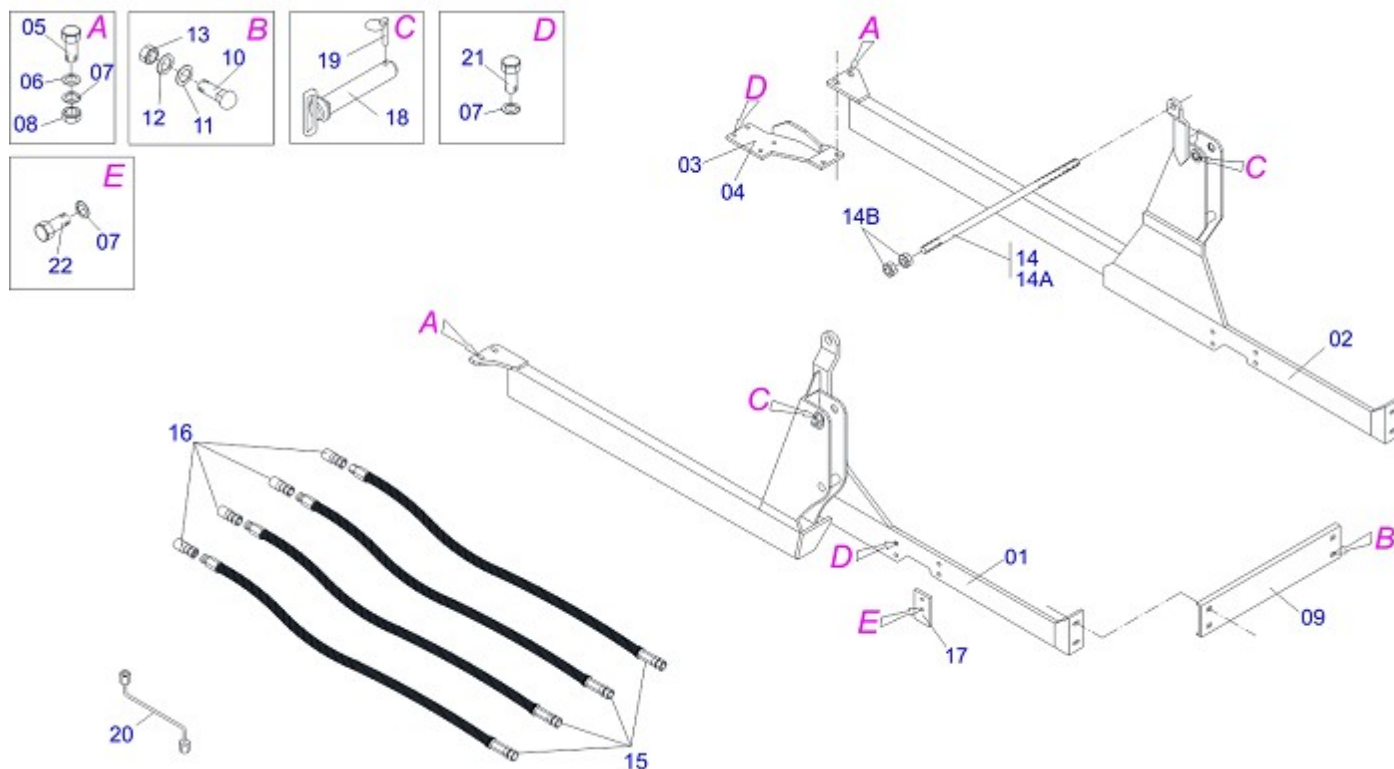
Item	Code	Description	
22	0501068213	5/8" WRENCH DOUBLE	01
23	0521016679	FRONT PROTECTOR PUMP	01
24	0503012407	5/8" X 1-1/2" BOLT	04
25	0501012140	FLAT WASHER	04
26	0503010027	5/8" SPRING WASHER	04
27	0503010013	5/8" NUT	04
28	0503011188	M16 X 2 X 50 BOLT	16
29	0503011730	M16 X 2 X 60 BOLT	04



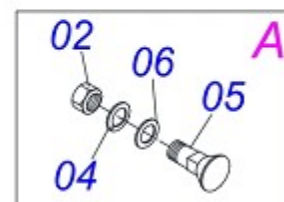
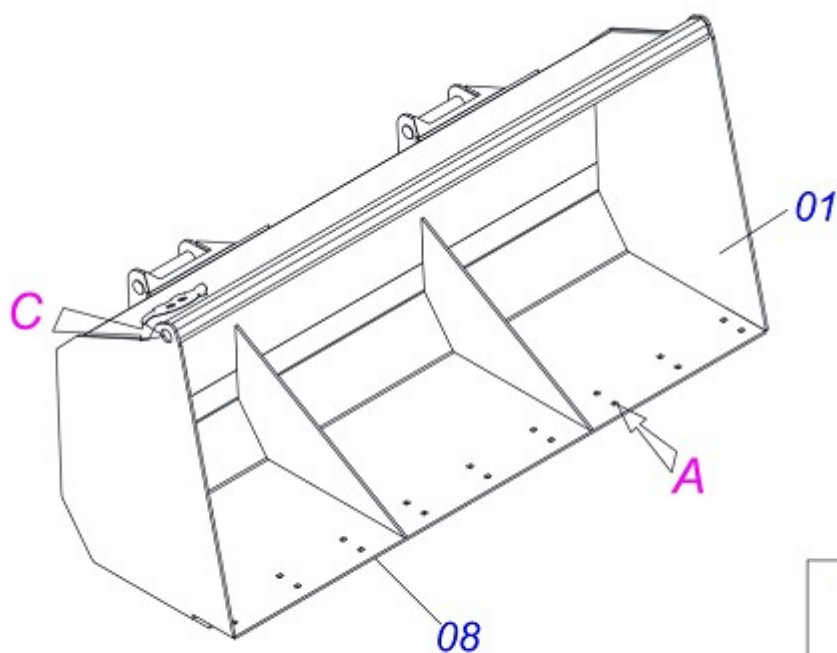
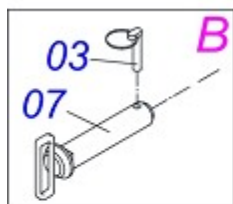
Item	Code	Description	
00	0511042640	1.75" X 3 X 32.28" HYDRAULIC CYLINDER	
01	0511065577	3" X 25.11" CYLINDER CASE	01
02	0511065578	1.7" X 28.18" TURNBUCLE	01
03	0502011899	MOBILE COVER	01
04	0502012264	RING SUPPORT 1.75" X 3"	01
05	0503010761	D-1750 SCRAPER RING	01
06	0503010990	GASKET	01
07	0503010949	W2-2000-500 PK RING G.E	01
08	0503010343	2-334 N 3006-9B O'RING	01
09	0503011059	8-334 BACK-UP RING	01
10	0502011898	1.8" X 3.0" PISTON	01
11	0503010992	W2-3000-500 PK RING G.E	01
12	0503012768	3750-2250 GASKET	02
13	0503010042	2-214 N 3006-9B O'RING	01
14	0503010063	1" SELF-ALIGNING NUT	01
15	0503010002	GREASE FITTING	02
16	0503030385	PLUG CYLINDER	02



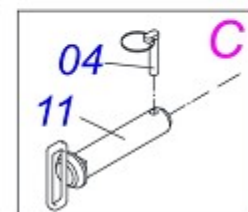
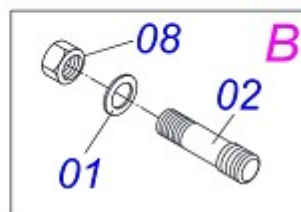
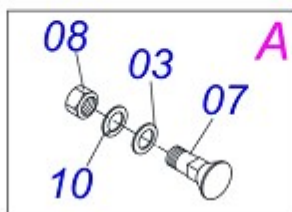
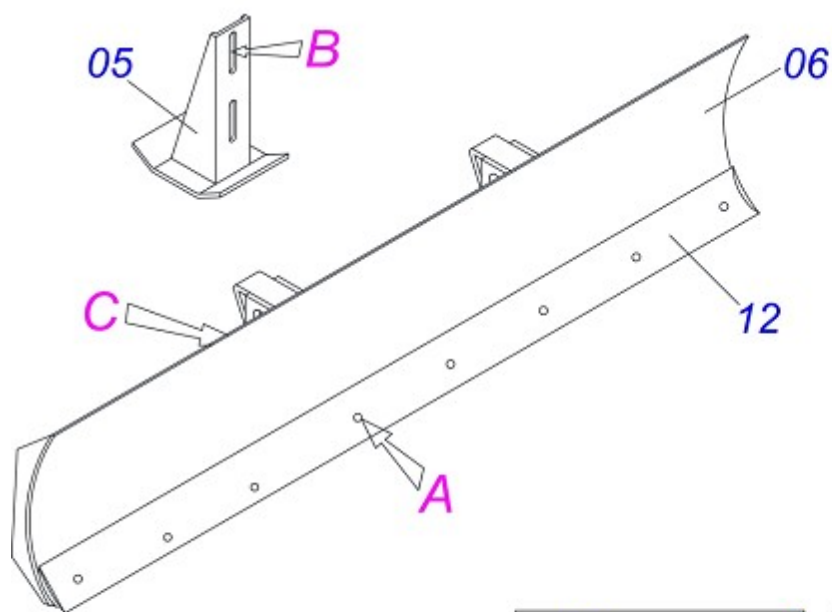
Item	Code	Description	
00	0511040725	1.75" X 3.37 X 3.56" HYDRAULIC CYLINDER	
01	0511063301	3.37" X 26.69" CYLINDER CASE	01
02	0511063302	1.75" X 28.7" TURNBUCLE	01
03	0502010993	DETACHABLE COVER	01
04	0502010781	RING SUPPORT	01
05	0503010761	D-1750 SCRAPER RING	01
06	0503010990	GASKET	01
07	0503010949	W2-2000-500 PK RING G.E	01
08	0503010976	2-336 N 3006-9B O'RING	01
09	0503011060	8-336 BACK-UP RING	01
10	0502010843	1.8" X 3.4" PISTON	01
11	0503010948	W4-3346-590 PK RING G.E	01
12	0503010170	PACKING 3120 2750	02
13	0503010042	2-214 N 3006-9B O'RING	01
14	0503010063	1" SELF-ALIGNING NUT	01
15	0503010002	GREASE FITTING	01
16	0501031796	HYDRAULIC CYLINDER REPAIR KIT	



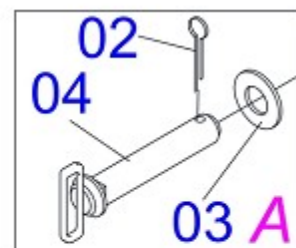
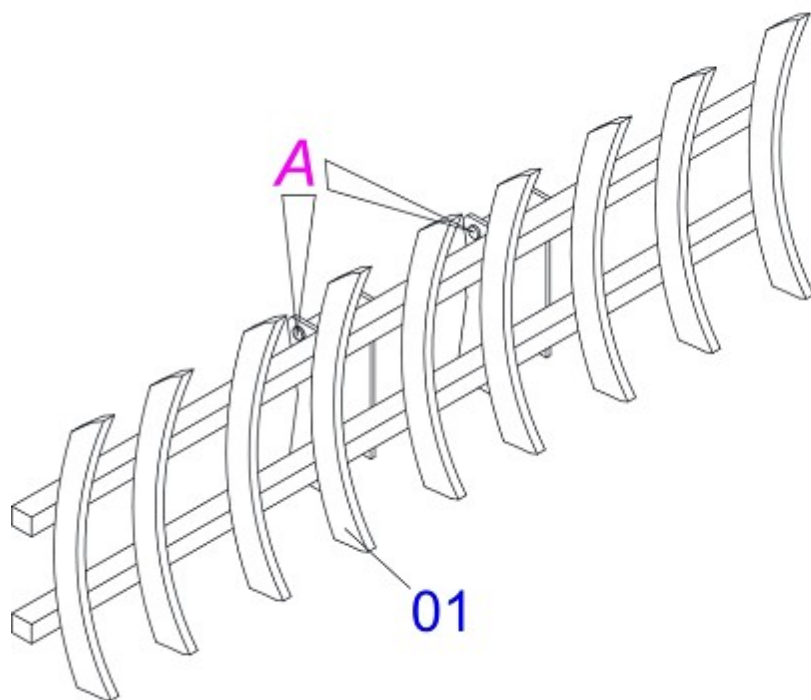
Item	Code	Description	
01	0511063839	RIGHT FRAME	01
02	0511063840	LEFT FRAME	01
03	0501063145	RH FRAME BRACKET	01
04	0501063146	LH FRAME BRACKET	01
05	0501010500	3/4" X 3" BOLT	04
06	0501010322	FLAT WASHER	04
07	0503010023	3/4" SPRING WASHER	04
08	0503010014	3/4" NUT	04
09	0521016679	FRONT PROTECTOR PUMP	01
10	0503012407	5/8" X 1-1/2" BOLT	04
11	0501012140	FLAT WASHER	04
12	0503010027	5/8" SPRING WASHER	04
13	0503010013	5/8" NUT	04
14	0501041652	1.1/4" X 31.88" ROD ASSY	01
14A	0501014916	1.1/4" X 31.88" ROD	01
14B	0501010087	1.1/4" UNC NUT	02
15	0501080361	3/8" X 157" TR-TM HOSE ASSY	04
16	0501053834	QUICK CONECTION (MALE) 1/2NPT	04
17	0531014070	BEATER BM VTR	02
18	0511060085	1.47" X 9.25" PIVOT SHAFT	02
19	0503030430	7/16 X 2" PIN LOCK	02
20	0501068213	5/8" WRENCH DOUBLE	01
21	0503011730	M16 X 2 X 60 BOLT	04
22	0503011188	M16 X 2 X 50 BOLT	10



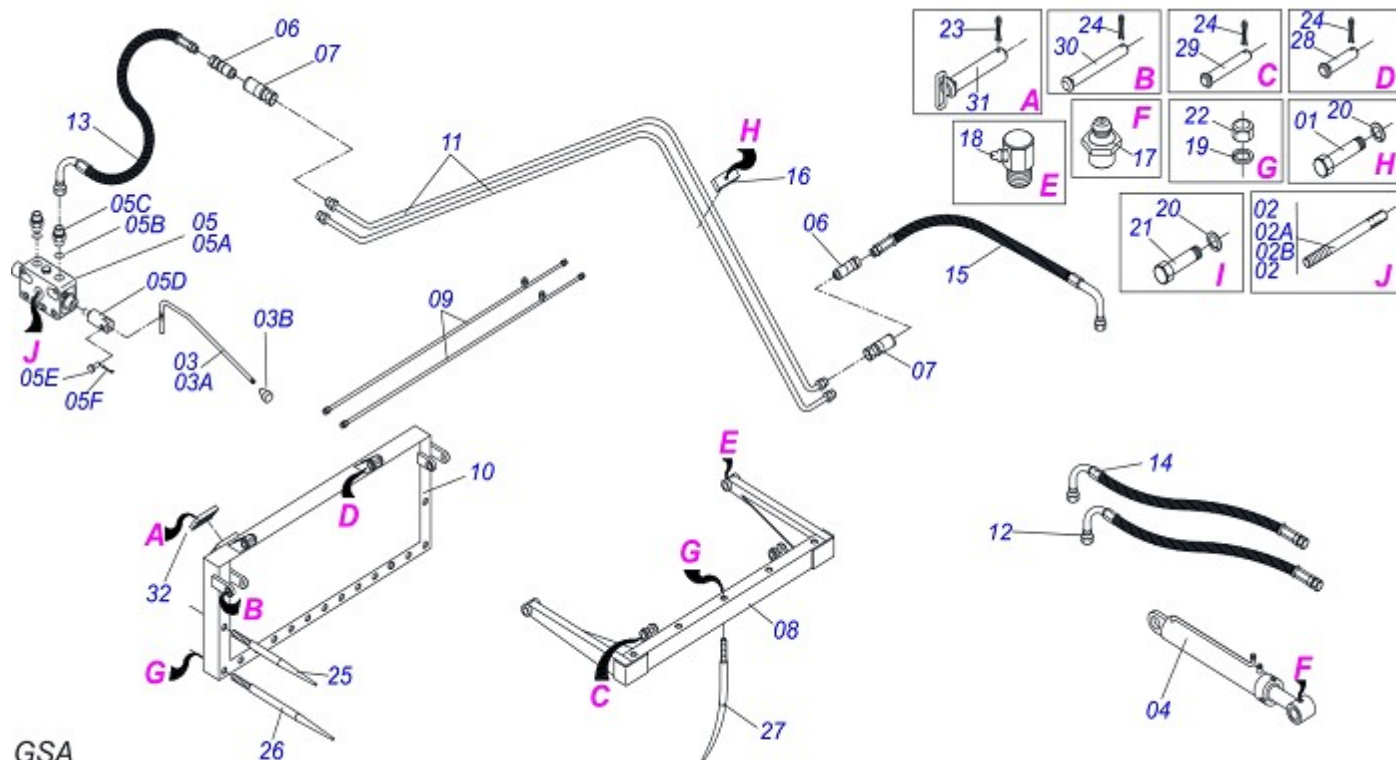
Item	Code	Description	
00	0501048045	PAC 800/1100 COMPL 1900 P ALT S0498	
01	0501069448	1925 BUCKET	01
02	0503010020	1/2" NUT	09
03	0503010534	3/8" X 2-1/2" COTTERPIN	02
04	0503011440	1/2" SPRING WASHER	09
05	0503012956	1/2" X 1-1/2" BOLT	09
06	0511017302	FLAT WASHER	09
07	0511060085	1.47" X 9.25" PIVOT SHAFT	02
08	0521011921	76.37" SCRAPER BUCKET	01



Item	Code	Description	
00	0501048065	LDA 2400 COMPL P/PCA 800/1100	
01	0501010322	FLAT WASHER	04
02	0501010571	3/4 NC X 3/4 NF X 56 PRISONER	04
03	0501012140	FLAT WASHER	08
04	0501012240	5/8" X 2-1/2" BOLT	08
05	0501063411	ESTABILIZER BRACKET	02
06	0501069112	2400MM DOZER BLADE	01
07	0503010013	5/8" NUT	08
08	0503010335	3/4" NUT	04
09	0503010534	3/8" X 2-1/2" COTTERPIN	02
10	0503011445	5/8" SPRING WASHER	08
11	0511060085	1.47" X 9.25" PIVOT SHAFT	02
12	0622360016	94.5" SCRAPER REVERSIBLE	01



Item	Code	Description	
00	0501048063	EAG 800/1100 9 TEETH ASSY S-0597	
01	0501069115	2400 ROOT RAKER	01
02	0503030430	7/16 X 2" PIN LOCK	04
03	0511019685	FLAT WASHER	04
04	0511060085	1.47" X 9.25" PIVOT SHAFT	04

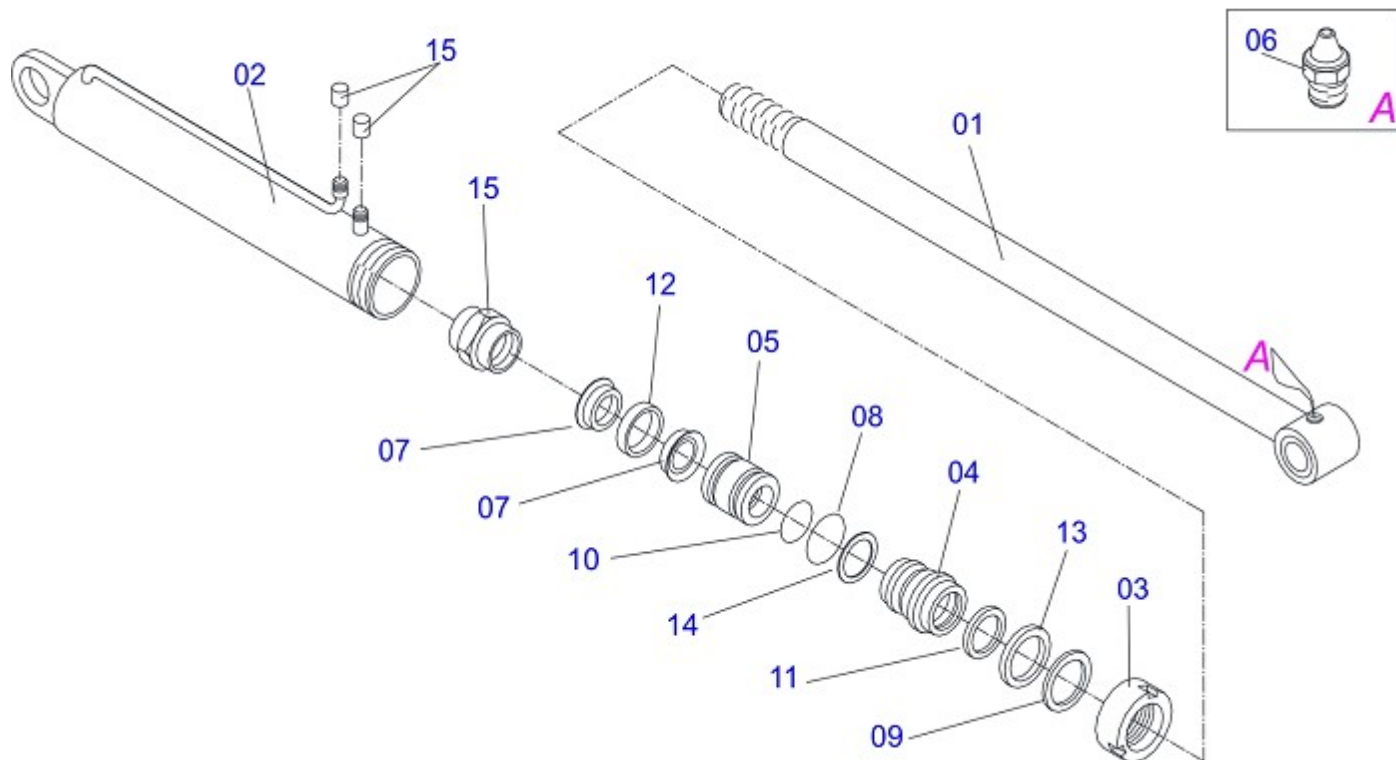


GSA

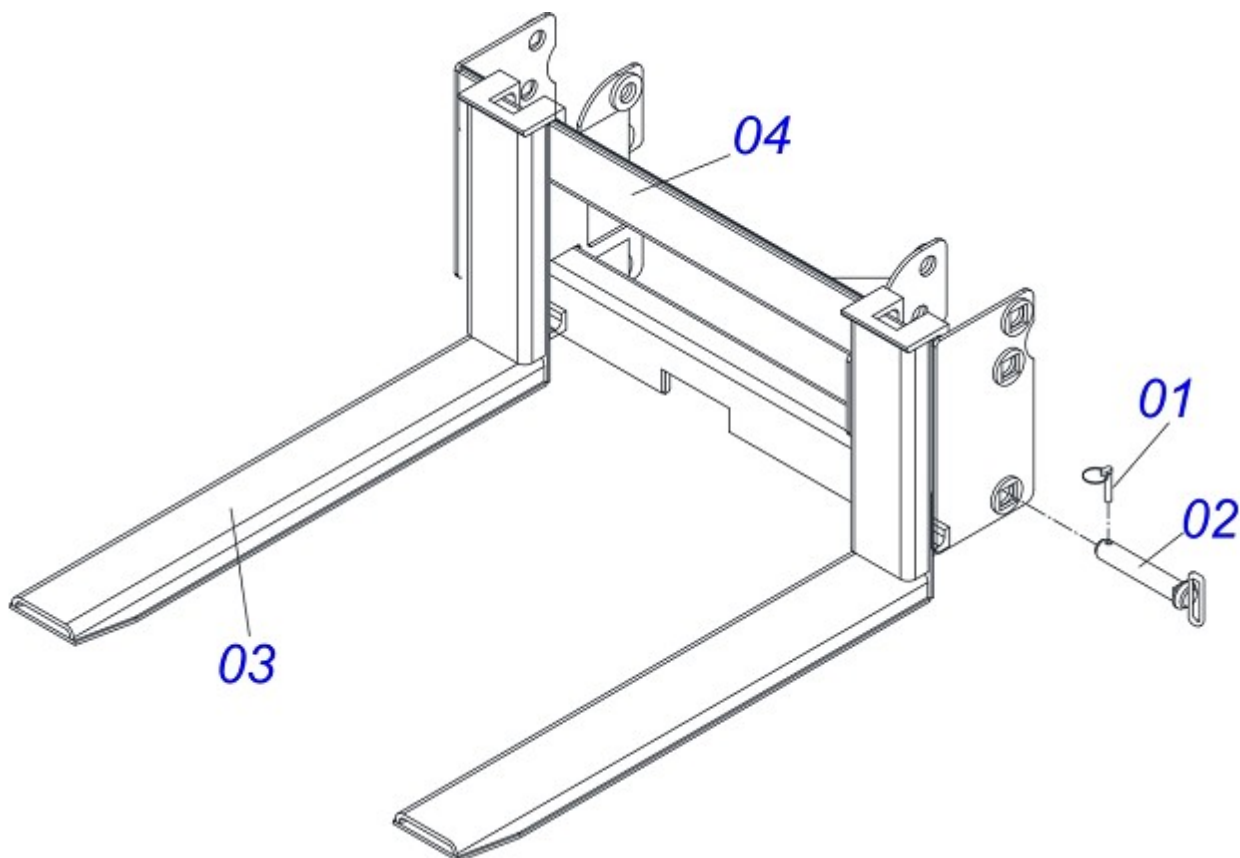
Item	Code	Description	
00	0501048091	GSA 800/1100 ASSY	
01	0501010096	3/8" X 2" BOLT	03
02	0501041496	PRISONER 3/8 UNC X 270	04
02A	0501016988	PRISONER 3/8 NC X 3/8 NC X 270	04
02B	0503010026	3/8" NUT	08
03	0501047446	CONTROL VALVE (P/COM 1/2 PCA)	01
03A	0501068681	1/2" CONTROL VALVE	01
03B	0503030878	LEVER CRANK	01
04	0501047447	1.5 X 2.5 X 16" X 9" HYDRAULIC CYLINDER	02
05	0501053055	1/2" CENTER BODY WITH 3/8" NIPPLES	01
05A	0503010423	1/2" CENTER BODY	01
05B	0503010045	2-116 N 3006-9B O'RING	02
05C	0511010111	7/8" NIPPLE	02
05D	0503030265	UPPER LEVER (PARKER 1/2")	01
05E	0521010533	0.3" X 1" COUPLING SHAFT	01
05F	0503010140	1/8" X 3/4" COTTERPIN	01
06	0501053834	QUICK CONECTION (MALE) 1/2NPT	04
07	0501053835	FEMALE QUICK COUPLER	04
08	0501068610	MOBILE FRAME	01
09	0501068686	OIL TUBE	02
10	0501069450	FIXED FRAME	01
11	0501069859	DISTRIBUTOR OIL TUBE	02
12	0501080328	3/8" X 29" TR-TC HOSE	02
13	0501080473	3/8" X 120" TC-TM HOSE	02
14	0501080599	3/8" X 25" TC-TR HOSE	02
15	0501080601	3/8" X 66.9 TC-TM HOSE	02
16	0502010477	UPPER CLAMP BODY	06
17	0503010002	GREASE FITTING	02
18	0503010004	GREASE FITTING	02
19	0503010012	1" SPRING WASHER	20
20	0503010025	3/8" SPRING WHASHER	10
21	0503010237	3/8" X 1" HEX BOLT G5	02
22	0503010340	1" UNF NUT	20



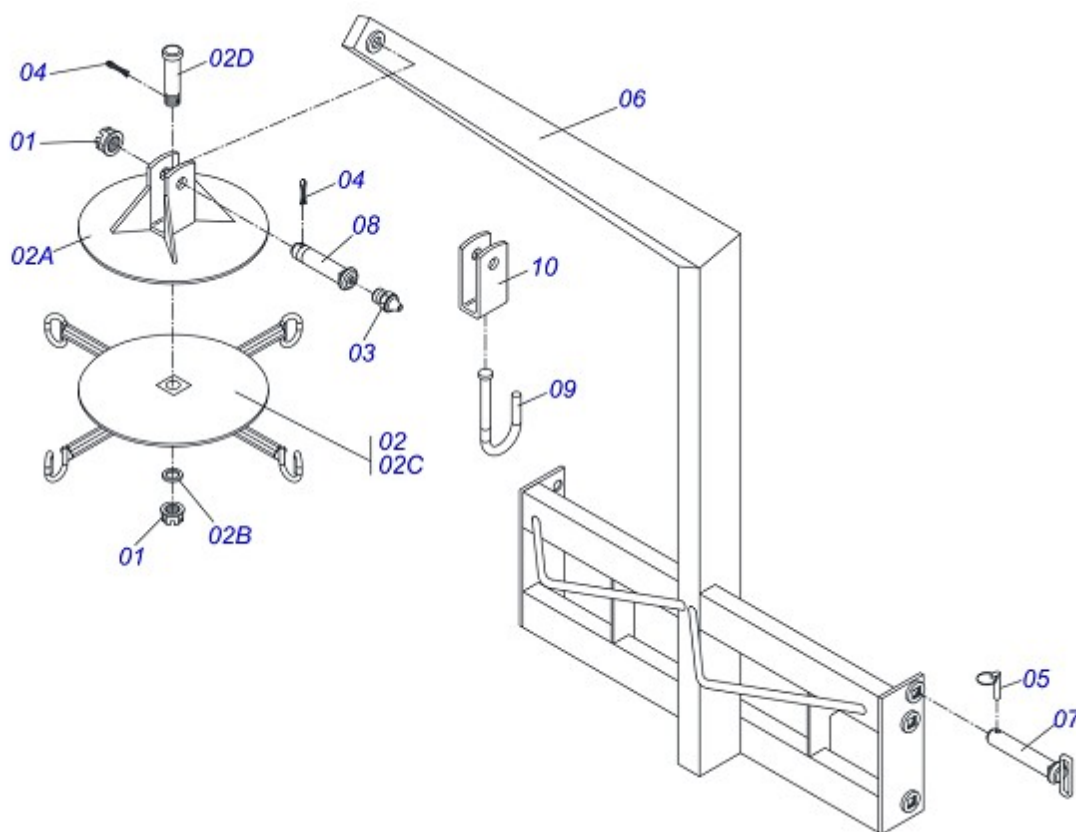
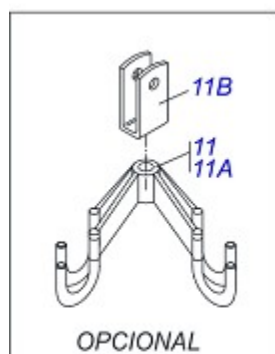
Item	Code	Description	
23	0503010534	3/8" X 2-1/2" COTTERPIN	02
24	0503010571	1/4" X 1.1/2" COTTERPIN	06
25	0511019542	1-1/2" X 26" STRAIGHT TEETH	02
26	0511019543	1-1/2" X 30" STRAIGHT TEETH	13
27	0511019544	1-1/2" X 26" BENT TOOTH	05
28	0511019621	0.9" X 2.8" COUPLING SHAFT	02
29	0511019622	0.9" X 4.0" COUPLING SHAFT	02
30	0511019623	0.9" X 5.4" COUPLING SHAFT	02
31	0511060085	1.47" X 9.25" PIVOT SHAFT	02
32	0531011180	UPPER CLAMP BODY	02



Item	Code	Description	
00	0501047447	1.5 X 2.5 X 16" X 9" HYDRAULIC CYLINDER	01
01	0501068721	1.5" X 14.1" TURNBUCLE	01
02	0501068722	63,50 X 328 CYLINDER CASE	01
03	0502010471	DETACHABLE COVER	01
04	0502010780	RING SUPPORT	01
05	0502010783	1.5" X 2.5" PISTON	01
06	0503010002	GREASE FITTING	01
07	0503010160	2500 2000 GASKET	02
08	0503010161	2-330 N 3006 9B O'RING	01
09	0503010163	D-1500 SCRAPER RING	01
10	0503010285	2-222 N 3006-9B O'RING	01
11	0503010970	W1-1650-500 PK RING G.E	01
12	0503010973	W2-2500-500 PK RING G.E	01
13	0503010989	1870-1500-375-B GASKET	01
14	0503011058	8-330 BACK-UP RING	01
15	0503011980	1" UNF LOCKNUT	01
16	0503030385	PLUG CYLINDER	02



Item	Code	Description	
00	0501048740	SAE COMPLETE FOR PCA 600/800/1100	
01	0503030430	7/16 X 2" PIN LOCK	04
02	0511060428	PIN HITCH	04
03	0511060429	CHARGING BAR	02
04	0511060430	CHARGING BAR SUPPORT	01



Item	Code	Description	
01	0501011301	1.1/2" CASTLE NUT	02
02	0501043072	CROSSPIECE ASSY GAT-R	01
02A	0511068703	U COUPLING CROSSPIECE	01
02B	0501012916	FLAT WASHER	01
02C	0501064477	CROSSPIECE	01
02D	0521010555	1-1/2" X 5.5" COUPLING SHAFT	01
03	0503010002	GREASE FITTING	01
04	0503010010	1/4" X 2.1/2" COTTERPIN	02
05	0503030430	7/16 X 2" PIN LOCK	04
06	0511060426	CROSSPIECE SUPPORT	01
07	0511060428	PIN HITCH	04
08	0521012828	1.5" X 6.8" PIVOT SHAFT	01
09	0501064475	1-1/4" HOOK	01
10	0501069722	U COUPLING HOOK	01
11	0501053565	CROSSPIECE ASSY FOR SAB/PD/PCA	01
11A	0511060427	CROSSPIECE	01
11B	0501069721	U COUPLING FOR CROSSPIECE	01



MARCHESAN IMPLEMENTOS E MÁQUINAS AGRÍCOLAS TATU S.A.
AV. Marchesan, 1979 - Post office box, 131 - CEP 15994-900 - Matão - SP - Brazil
Phone +55 16.3382-8282
(FAX Parts) + 55 16.3382. 8297 - (Export) + 55 16.3382.1003
e.mail: tatu@marchesan.com.br www.marchesan.com.br

Drafting and Illustration = GASPARI
e.mail = jgaspari@marchesan.com.br

**ORIGINAL PARTS
TATU**

