

PARTS CATALOG

AGRICULTURAL FRONT LOADER

PCA MF 1100

Code: 0501090759



Series: S-0605

Review: JUNHO/2005

ORIGINAL PARTS
TATU

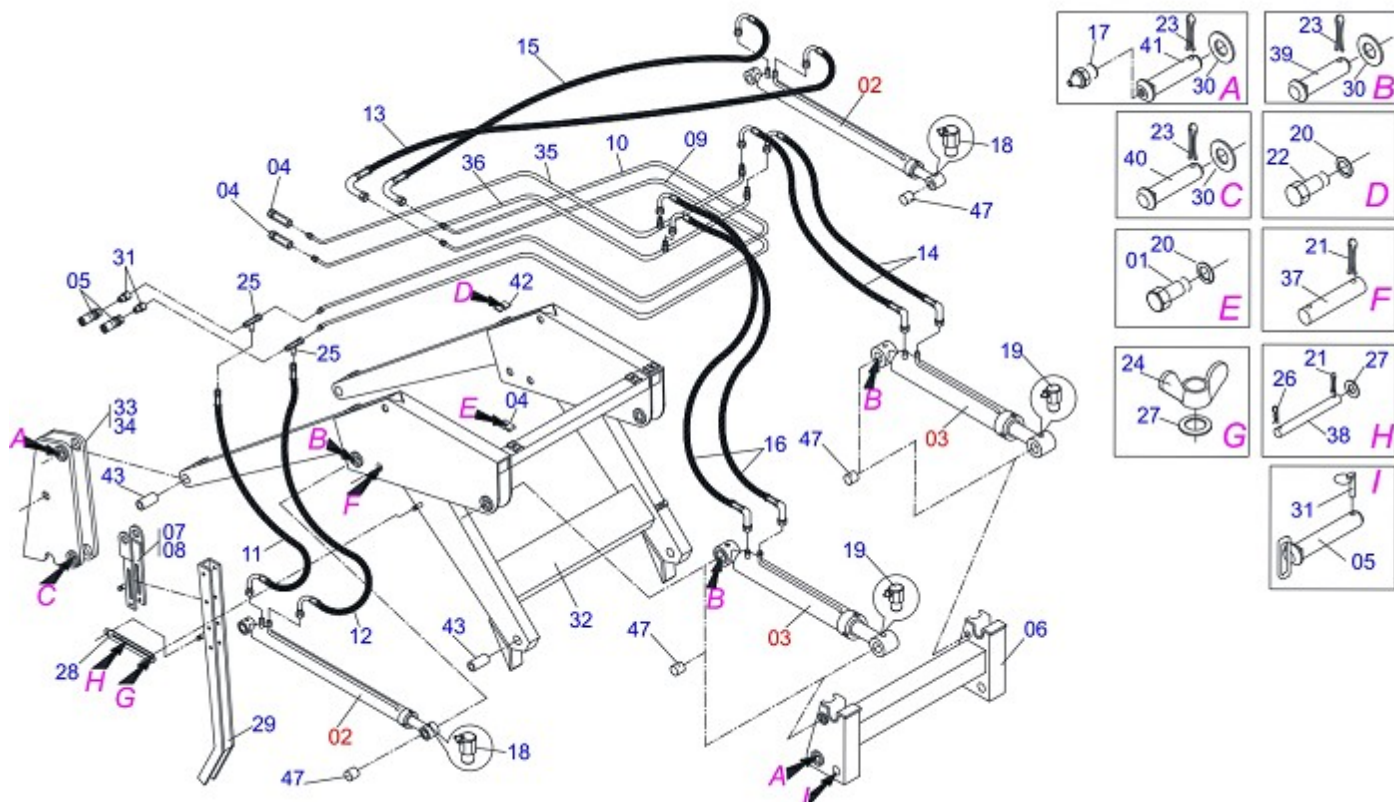


INDEX

0909091316	MOBILE SUPPORT	1
0511042640	1.75" X 3 X 32.28" HYDRAULIC CYLINDER	2
0511040725	1.75" X 3.37 X 3.56" HYDRAULIC CYLINDER	3
0909091314	HYDRAULIC CIRCUIT	4
0909091298		5
0909091317	HYDRAULIC CIRCUIT	6
0909091319		7
0909091329	MOBILE SUPPORT ASSY	8
0909091320	CIRCUIT	9
0501048045	PAC 800/1100 COMPL 1900 P ALT S0498	10
0501048065	LDA 2400 COMPL P/PCA 800/1100	11
0501048063	EAG 800/1100 9 TEETH ASSY S-0597	12
0501048091	GSA 800/1100 ASSY	13
0501047447	1.5 X 2.5 X 16" X 9" HYDRAULIC CYLINDER	14
0501048740	SAE COMPLETE FOR PCA 600/800/1100	15
0501048741	SAB COMPLETE FOR PCA 600/800/1100	16

ATTENTION: **IMPORTANT**

MARCHESAN RESERVES THE RIGHT AT ANY TIME TO MAKE IMPROVEMENTS IN THE DESIGN, MATERIAL OR SPECIFICATIONS OF MACHINERY, EQUIPMENT OR PARTS WITHOUT THEREBY BECOMING LIABLE TO MAKE SIMILAR CHANGES IN MACHINERY, EQUIPMENT OR PARTS PREVIOUSLY SOLD.

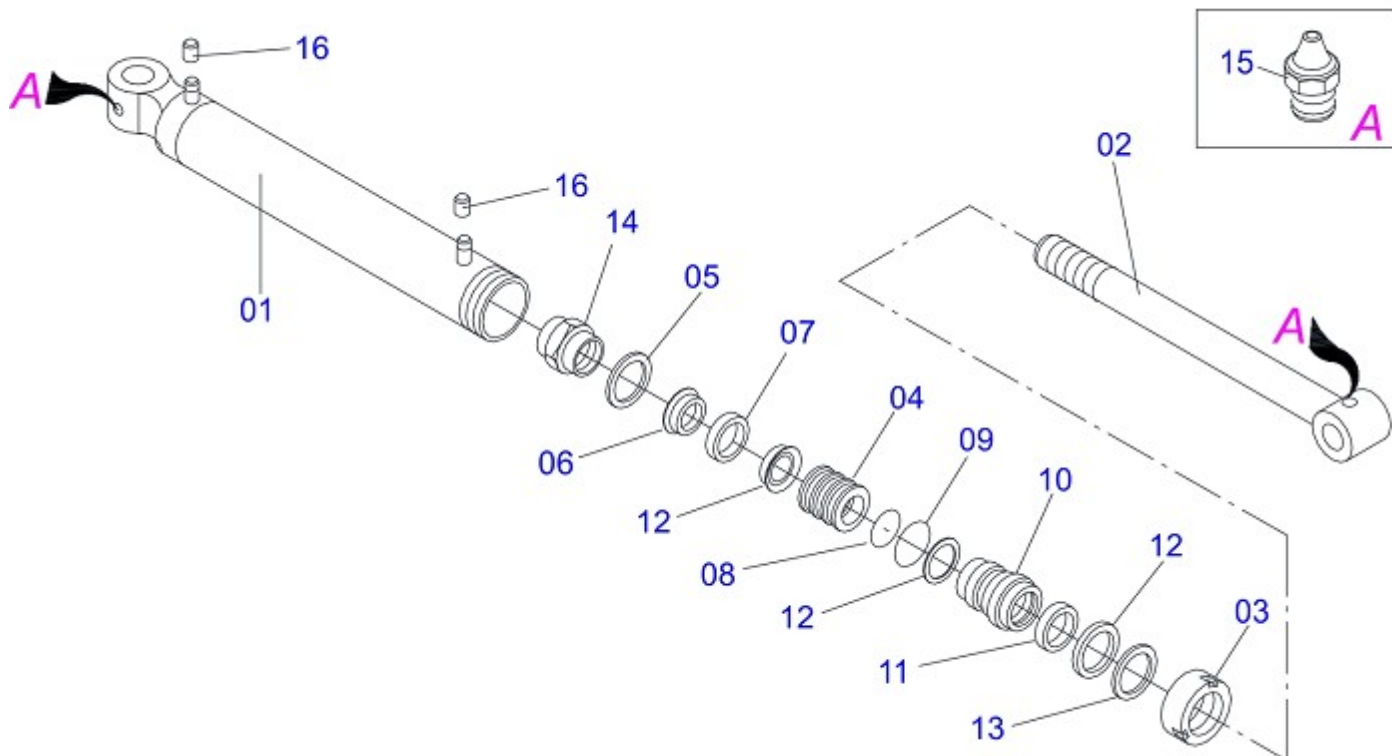


Item	Code	Description	
01	0501010096	3/8" X 2" BOLT	04
02	0511040725	1.75" X 3.37 X 3.56" HYDRAULIC CYLINDER	02
03	0511042640	1.75" X 3 X 32.28" HYDRAULIC CYLINDER	02
04	0501053834	QUICK CONECTION (MALE) 1/2NPT	02
05	0501053835	FEMALE QUICK COUPLER	02
06	0501069146	JOINT SUPPORT PCA 800	01
07	0501069157	PLOUGH SUPPORT	01
08	0501069158	PLOUGH SUPPORT	01
09	0501069860	OUTER OIL TUBE	01
10	0501069861	INNER OIL TUBE	01
11	0501080150	3/8" X 31.49" HOSE ASSY	01
12	0501080413	3/8" X 27" TR-TC HOSE ASSY	01
13	0501080766	3/8" X 27.56" TC-TC HOSE	01
14	0501080688	3/8" X 25" TC-TC 90G HOSE	04
15	0501080723	3/8" X 31.49" TC-TC HOSE	01
16	0501080777	LH 3/8" X 25.9" TC-TC HOSE	02
17	0503010002	GREASE FITTING	06
18	0503010003	3/8" GREASE FITTING	02
19	0503010004	GREASE FITTING	02
20	0503010025	3/8" SPRING WHASHER	06
21	0503010131	3/16" X 1-1/2" COTTERPIN	10
22	0503010237	3/8" X 1" HEX BOLT G5	02
23	0503010534	3/8" X 2-1/2" COTTERPIN	10
24	0503010918	1/2" UNC BUTTERFLY NUT	02
25	0503011968	"T" ADAPTOR WITH GIRAT NUT 3/8	02
26	0503030168	HAIR PIN	04
27	0511017302	FLAT WASHER	14
28	0511019634	CONTROL LOCK	02
29	0511019660	PLOUGH SUPPORT BODY	02
30	0511019685	FLAT WASHER	12
31	0511019876	1/2" NIPPLE	02
32	0511060289	MOBILE SUPPORT PCA 1100	01
33	0511061354	RH MOBILE TOWER	01

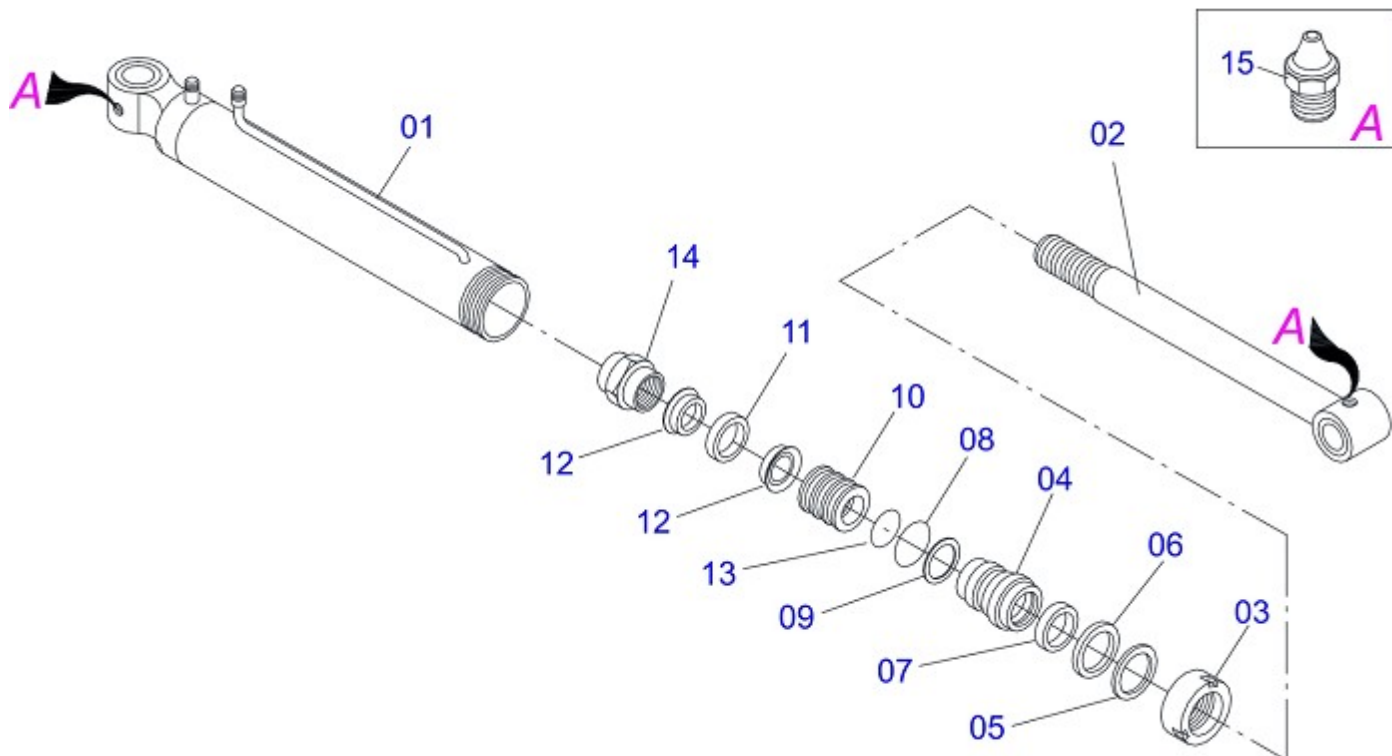


PCA MF 1100
MOBILE SUPPORT

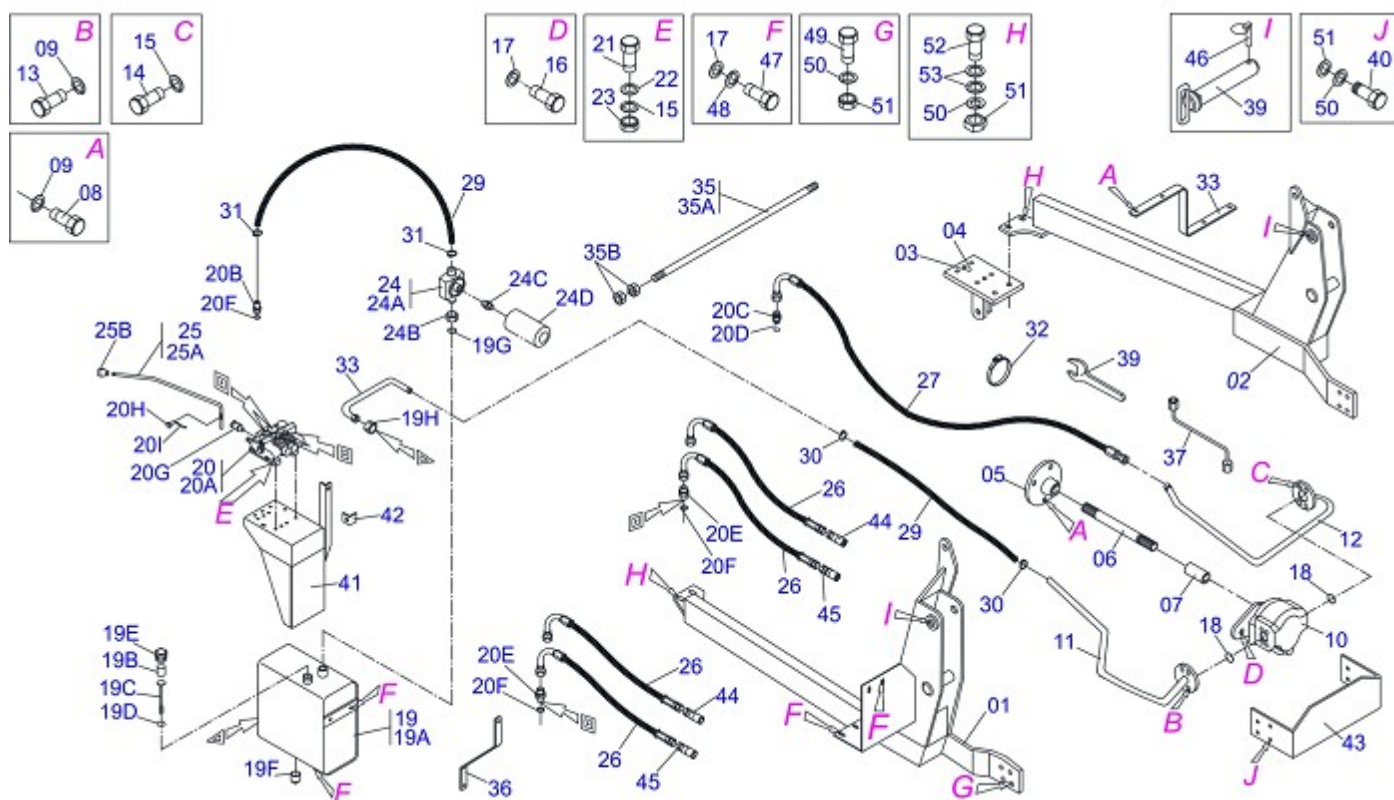
Item	Code	Description	
34	0511061355	LH MOBILE TOWER	01
35	0511061630	RIGHT OIL TUBE	01
36	0511061631	LH OIL TUBE	01
37	0521012777	COUPLING SHAFT	02
38	0521012823	COUPLING SHAFT	04
39	0521012868	1.4" X 5" PIVOT SHAFT	04
40	0521012869	COUPLING SHAFT	02
41	0521012870	1.46" X 6.18" PIVOT SHAFT	04
42	0531011180	UPPER CLAMP BODY	02
43	0521011903	1.48" X 1.77" X 3.93" SLEEVE INTER	04
44	0502010477	UPPER CLAMP BODY	08
45	0511064410	1.5" X 8.1" COUPLING SHAFT	02
46	0503030430	7/16 X 2" PIN LOCK	02
47	0521010514		08



Item	Code	Description	
00	0511042640	1.75" X 3 X 32.28" HYDRAULIC CYLINDER	
01	0511065577	3" X 25.11" CYLINDER CASE	01
02	0511065578	1.7" X 28.18" TURNBUCLE	01
03	0502011899	MOBILE COVER	01
04	0502012264	RING SUPPORT 1.75" X 3"	01
05	0503010761	D-1750 SCRAPER RING	01
06	0503010990	GASKET	01
07	0503010949	W2-2000-500 PK RING G.E	01
08	0503010343	2-334 N 3006-9B O'RING	01
09	0503011059	8-334 BACK-UP RING	01
10	0502011898	1.8" X 3.0" PISTON	01
11	0503010992	W2-3000-500 PK RING G.E	01
12	0503012768	3750-2250 GASKET	02
13	0503010042	2-214 N 3006-9B O'RING	01
14	0503010063	1" SELF-ALIGNING NUT	01
15	0503010002	GREASE FITTING	02
16	0503030385	PLUG CYLINDER	02



Item	Code	Description	
00	0511040725	1.75" X 3.37 X 3.56"HYDRAULIC CYLINDER	
01	0511063301	3.37" X 26.69" CYLINDER CASE	01
02	0511063302	1.75" X 28.7" TURNBUCLE	01
03	0502010993	DETACHABLE COVER	01
04	0502010781	RING SUPPORT	01
05	0503010761	D-1750 SCRAPER RING	01
06	0503010990	GASKET	01
07	0503010949	W2-2000-500 PK RING G.E	01
08	0503010976	2-336 N 3006-9B O'RING	01
09	0503011060	8-336 BACK-UP RING	01
10	0502010843	1.8" X 3.4" PISTON	01
11	0503010948	W4-3346-590 PK RING G.E	01
12	0503010170	PACKING 3120 2750	02
13	0503010042	2-214 N 3006-9B O'RING	01
14	0503010063	1" SELF-ALIGNING NUT	01
15	0503010002	GREASE FITTING	01
16	0501031796	HYDRAULIC CYLINDER REPAIR KIT	

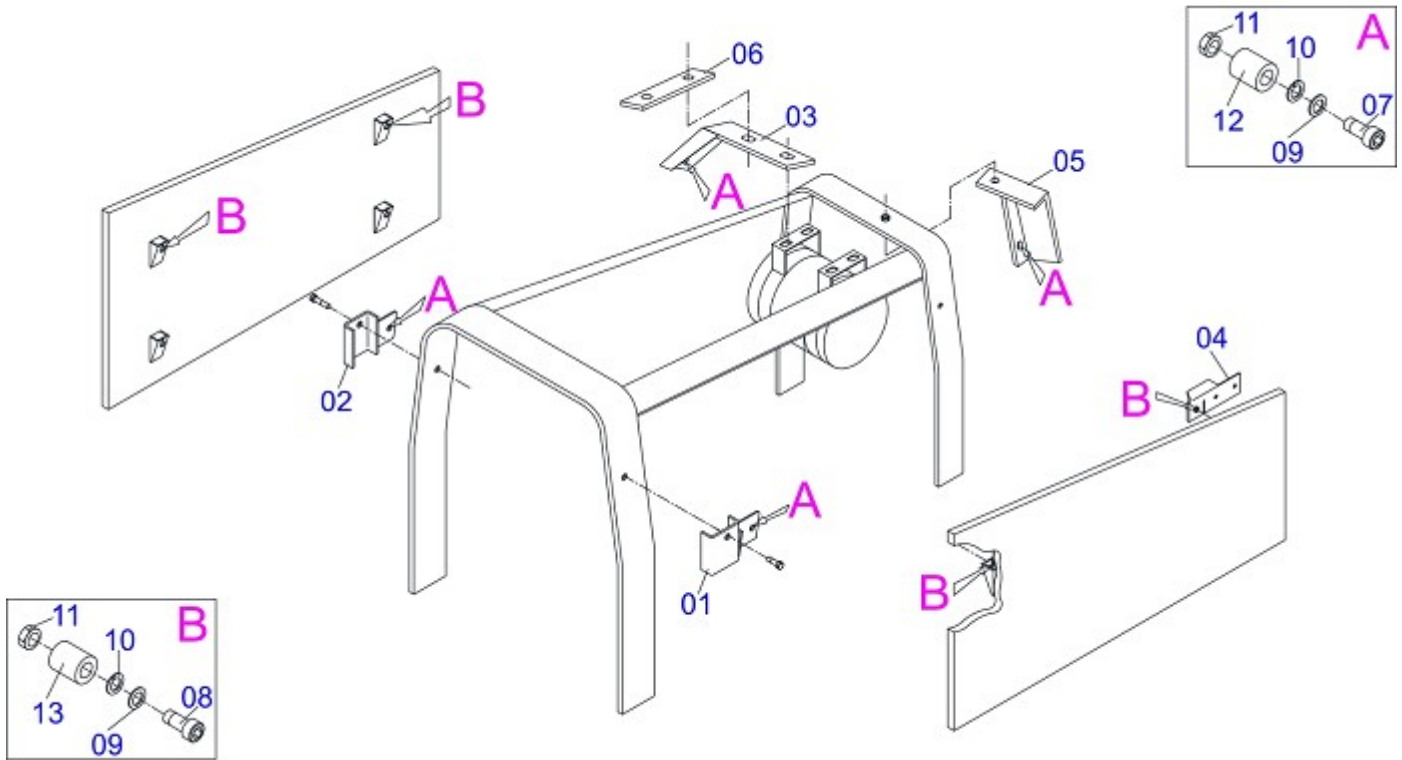


Item	Code	Description	CD
01	0511063957	RIGHT FRAME	01
02	0511063958	LEFT FRAME	01
03	0501067262		01
04	0501067263		01
05	0503050056	FLANGE COUPLING	01
06	0503030881	695 X 1.1/8 STRIATED X 1.1/8-30G AXLE	01
07	0503030838	1-1/8" X 2.4" SLEEVE	01
08	0503010119	7/16" X 1-1/4" BOLT	04
09	0503010180	7/16" SPRING WASHER	08
10	0503060153	40L 1/2" PUMP	01
11	0501066833	PUMP SUCTION TUBE	01
12	0501066832	PUMP PRESSURE TUBE	01
13	0503010355	7/16" X 1" BOLT	04
14	0503010237	3/8" X 1" HEX BOLT G5	04
15	0503010025	3/8" SPRING WHASHER	21
16	0503010920	1/2" X 1.1/2" BOLT	02
17	0503010019	1/2" SPRING WASHER	06
18	0503010173	2-220 N 3006-9B O'RING	02
19	0501047807	RESERVOIR OIL ASSY	01
19A	0501068880	RESERVOIR OIL	01
19B	0503030044	FILTERING ELEMENT	01
19C	0501060975	OIL GAGE	01
19D	0503010185	2-221 N 3006-9B O'RING	01
19E	0502020472	TANK COVER BODY	01
19F	0503031604	1/2" BSP PLUG	01
19G	0503010046	2-216 N 3006-9B O'RING	01
19H	0501016309	2" 1X 2.5/16" NUT	01
20	0501048916	1/2" DOUBLE COMMAND ASSY	01
20A	0503060081	1/2" DOUBLE COMMAND	01
20B	0501010591	HOSE NIPPLE	01
20C	0501010589	1-1/16 NIPPLE	01
20D	0503010602	2-211 N 3006-9B O'RING	02
20E	0511010111	7/8" NIPPLE	04

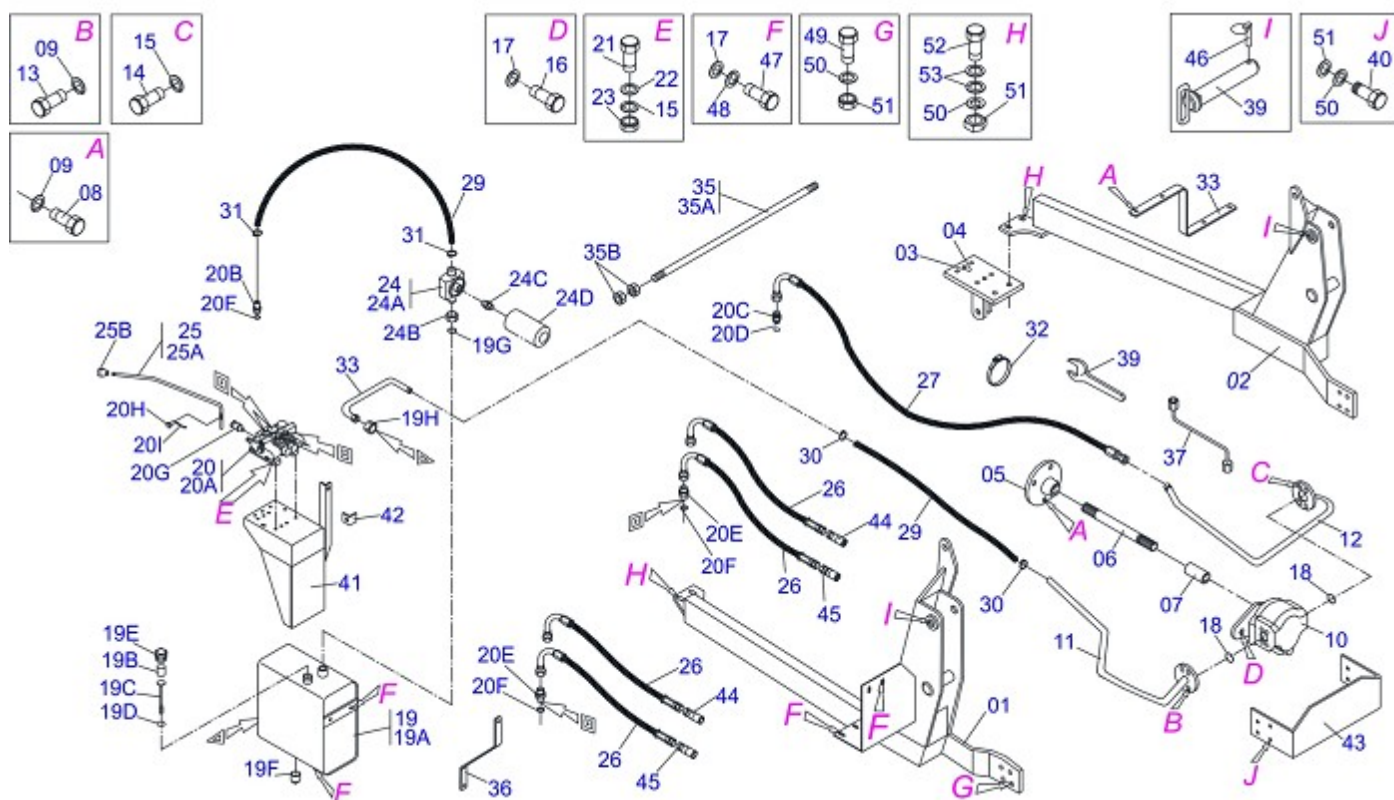


PCA MF 1100
HYDRAULIC CIRCUIT

Item	Code	Description	CD
20F	0503010045	2-116 N 3006-9B O'RING	04
20G	0503030347	UPPER LEVER ASSY (SAUER DANFOSS)	02
20H	0521010533	0.3" X 1" COUPLING SHAFT	02
20I	0503010140	1/8" X 3/4" COTTERPIN	02
21	0501010080	3/8" X 1-1/2" BOLT	03
22	0501010984	FLAT WASHER	03
23	0503010026	3/8" NUT	17
24	0501041108	RETURNING FILTER ASSY	01
24A	0502050002	RETURNING FILTER HEAD	01
24B	0501010594	1" NUT HEX	01
24C	0501010595	1" NF NIPPLE	01
24D	0503010183	RETURNING FILTER	01
25	0501048023	CONTROL VALVE	02
25A	0511060695	CONTROL VALVE	02
25B	0503030878	LEVER CRANK	01
26	0501080601	3/8" X 66.9 TC-TM HOSE	04
27	0501080233		01
28	0501013436		01
29	0501010835		01
30	0503010184	1-1/4" TO 1-1/2" CLAMP	02
31	0503010243	1-1/2" TO 2" CLAMP	02
32	0503010246	2" TO 2 1/2" CLAMP	02
33	0501066854	TANK OUTER TUBE	01
34	0531017226		02
35	0501042819	1.1/4"NC X 33.46" ROD	01
35A	0501018845	1.1/4" X 33.46" ROD	01
35B	0501010087	1.1/4" UNC NUT	04
36	0521012541	REDLIGHT SUPPORT	02
37	0501068213	5/8" WRENCH DOUBLE	01
38	0511010153	2-5/16" FIXED WRENCH	01
39	0511060085	1.47" X 9.25" PIVOT SHAFT	02
40	0501018059	3/4" X 2-1/4" BOLT	08
41	0511063961		01
42	0521012360		02
43	0531016661		01
44	0501053834	QUICK CONECTION (MALE) 1/2NPT	02
45	0501053835	FEMALE QUICK COUPLER	02
46	0503030430	7/16 X 2" PIN LOCK	02
47	0501010161	1/2" X 1-1/4" BOLT	04
48	0511017302	FLAT WASHER	06
49	0501011544	3/4" X 1-1/2" BOLT	04
50	0503010023	3/4" SPRING WASHER	22
51	0503010014	3/4" NUT	04
52	0501010500	3/4" X 3" BOLT	04
53	0501010322	FLAT WASHER	08



Item	Code	Description	
01	0501066793	RH FIXER SUPPORT HOOD	01
02	0501066794	LH FIXER SUPPORT HOOD	01
03	0501066795	LH HOOD FIXER REAR SUPPORT	01
04	0501068307	RH HOOD CUSHION FRONT SUPPORT	01
05	0511066525	RH HOOD FIXER SUPPORT	01
06	0531015896	HOOD FIXER LOCK SUPPORT	01
07	0503010376	5/16" X 1" BOLT	04
08	0503011363	5/16" X 1-1/4" BOLT	04
09	0501010694	FLAT WASHER	08
10	0503010179	5/16" SPRING WASHER	08
11	0503010337	5/16" NUT	08
12	0503011314	SUPPORT	04
13	0503011315	SHOCK ABSORBER	04

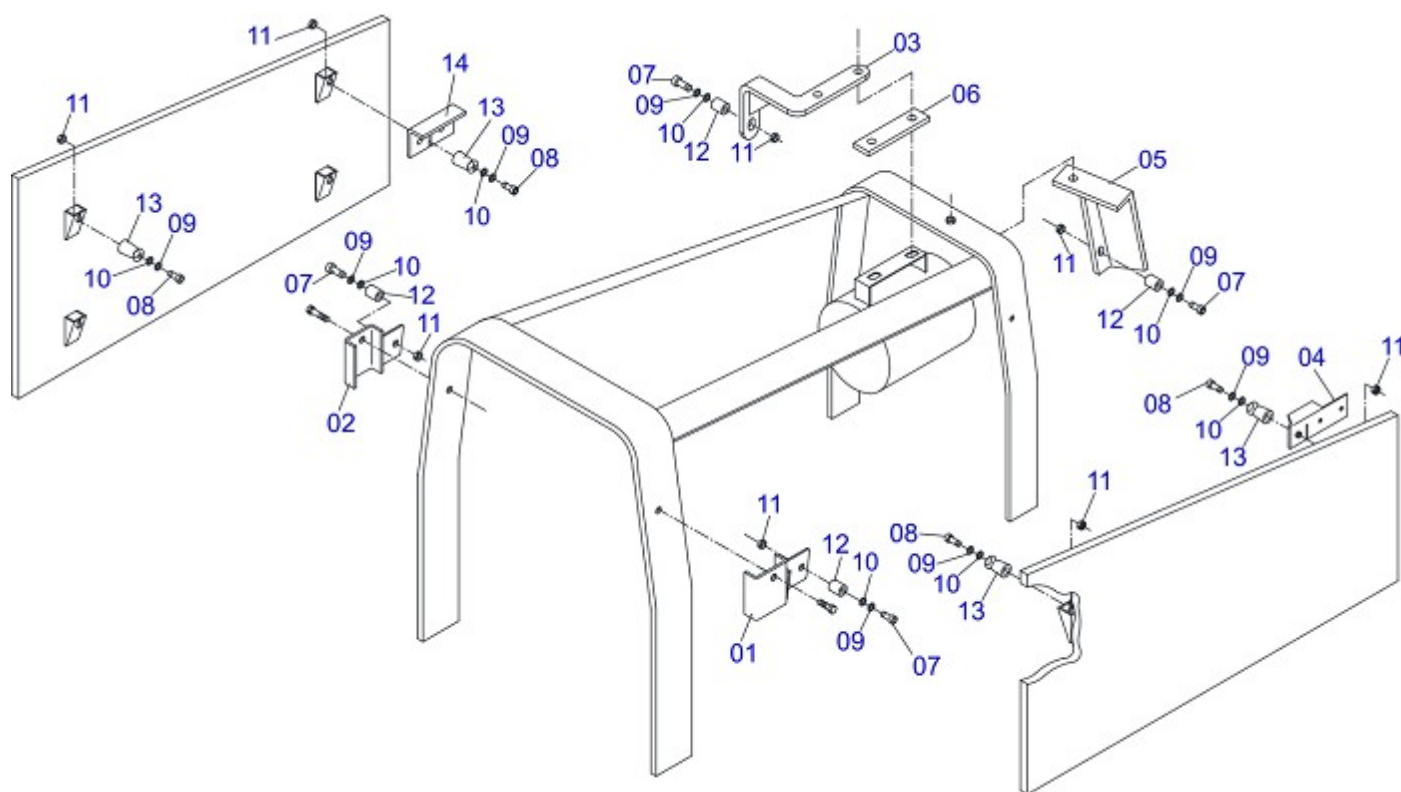


Item	Code	Description	
01	0511063957	RIGHT FRAME	01
02	0511063958	LEFT FRAME	01
03	0501067262		01
04	0501067263		01
05	0503050056	FLANGE COUPLING	01
06	0503030881	695 X 1.1/8 STRIATED X 1.1/8-30G AXLE	01
07	0503030838	1-1/8" X 2.4" SLEEVE	01
08	0503010119	7/16" X 1-1/4" BOLT	04
09	0503010180	7/16" SPRING WASHER	08
10	0503060153	40L 1/2" PUMP	01
11	0501066833	PUMP SUCTION TUBE	01
12	0501066832	PUMP PRESSURE TUBE	01
13	0503010355	7/16" X 1" BOLT	04
14	0503010237	3/8" X 1" HEX BOLT G5	04
15	0503010025	3/8" SPRING WHASHER	21
16	0503010920	1/2" X 1.1/2" BOLT	02
17	0503010019	1/2" SPRING WASHER	06
18	0503010173	2-220 N 3006-9B O'RING	02
19	0501047807	RESERVOIR OIL ASSY	01
19A	0501068880	RESERVOIR OIL	01
19B	0503030044	FILTERING ELEMENT	01
19C	0501060975	OIL GAGE	01
19D	0503010185	2-221 N 3006-9B O'RING	01
19E	0502020472	TANK COVER BODY	01
19F	0503031604	1/2" BSP PLUG	01
19G	0503010046	2-216 N 3006-9B O'RING	01
19H	0501016309	2" 1X 2.5/16" NUT	01
20	0501048916	1/2" DOUBLE COMMAND ASSY	01
20A	0503060081	1/2" DOUBLE COMMAND	01
20B	0501010591	HOSE NIPPLE	01
20C	0501010589	1-1/16 NIPPLE	01
20D	0503010602	2-211 N 3006-9B O'RING	02
20E	0511010111	7/8" NIPPLE	04

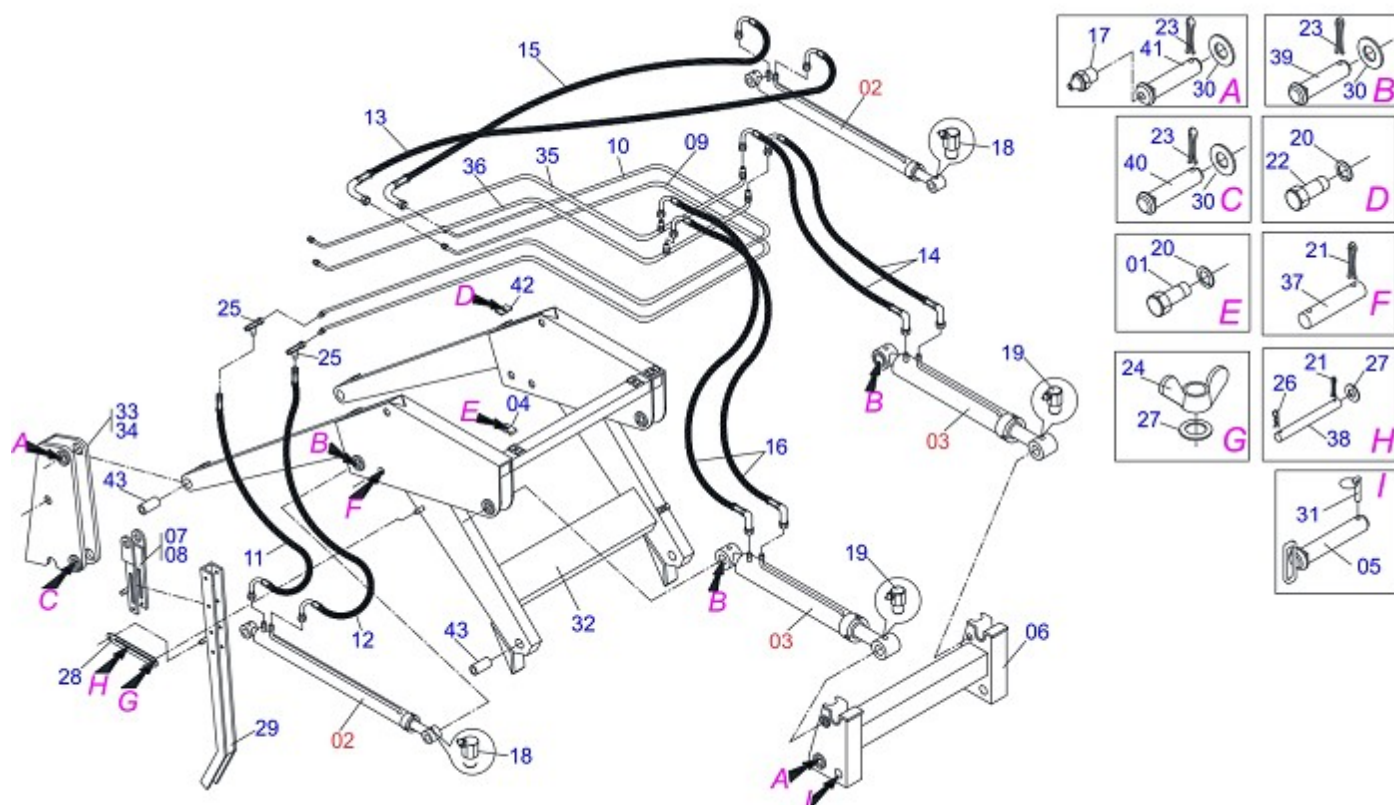


PCA MF 1100
HYDRAULIC CIRCUIT

Item	Code	Description	
20F	0503010045	2-116 N 3006-9B O'RING	04
20G	0503030347	UPPER LEVER ASSY (SAUER DANFOSS)	02
20H	0521010533	0.3" X 1" COUPLING SHAFT	02
20I	0503010140	1/8" X 3/4" COTTERPIN	02
21	0501010080	3/8" X 1-1/2" BOLT	03
22	0501010984	FLAT WASHER	03
23	0503010026	3/8" NUT	17
24	0501041108	RETURNING FILTER ASSY	01
24A	0502050002	RETURNING FILTER HEAD	01
24B	0501010594	1" NUT HEX	01
24C	0501010595	1" NF NIPPLE	01
24D	0503010183	RETURNING FILTER	01
25	0501048023	CONTROL VALVE	02
25A	0511060695	CONTROL VALVE	02
25B	0503030878	LEVER CRANK	01
26	0501080601	3/8" X 66.9 TC-TM HOSE	04
27	0501080233		01
28	0501013436		01
29	0501010835		01
30	0503010184	1-1/4" TO 1-1/2" CLAMP	02
31	0503010243	1-1/2" TO 2" CLAMP	02
32	0503010246	2" TO 2 1/2" CLAMP	02
33	0501066854	TANK OUTER TUBE	01
34	0531017226		02
35	0501042819	1.1/4"NC X 33.46" ROD	01
35A	0501018845	1.1/4" X 33.46" ROD	01
35B	0501010087	1.1/4" UNC NUT	04
36	0521012541	REDLIGHT SUPPORT	02
37	0501068213	5/8" WRENCH DOUBLE	01
38	0511010153	2-5/16" FIXED WRENCH	01
39	0511060085	1.47" X 9.25" PIVOT SHAFT	02
40	0501018059	3/4" X 2-1/4" BOLT	08
41	0511063961		01
42	0521012360		02
43	0531016661		01
44	0501053834	QUICK CONECTION (MALE) 1/2NPT	02
45	0501053835	FEMALE QUICK COUPLER	02
46	0503030430	7/16 X 2" PIN LOCK	02
47	0501010161	1/2" X 1-1/4" BOLT	04
48	0511017302	FLAT WASHER	06
49	0501011544	3/4" X 1-1/2" BOLT	04
50	0503010023	3/4" SPRING WASHER	22
51	0503010014	3/4" NUT	04
52	0501010500	3/4" X 3" BOLT	04
53	0501010322	FLAT WASHER	08



Item	Code	Description	
01	0501066793	RH FIXER SUPPORT HOOD	01
02	0501066794	LH FIXER SUPPORT HOOD	01
03	0511065270		01
04	0501068307	RH HOOD CUSHION FRONT SUPPORT	01
05	0511066225	SEED/FERTILIZER BOX SUPPORT	01
06	0531015896	HOOD FIXER LOCK SUPPORT	01
07	0503010376	5/16" X 1" BOLT	04
08	0503011363	5/16" X 1-1/4" BOLT	04
09	0501010694	FLAT WASHER	08
10	0503010179	5/16" SPRING WASHER	08
11	0503010337	5/16" NUT	08
12	0503011314	SUPPORT	04
13	0503011315	SHOCK ABSORBER	04
14	0511066032		01



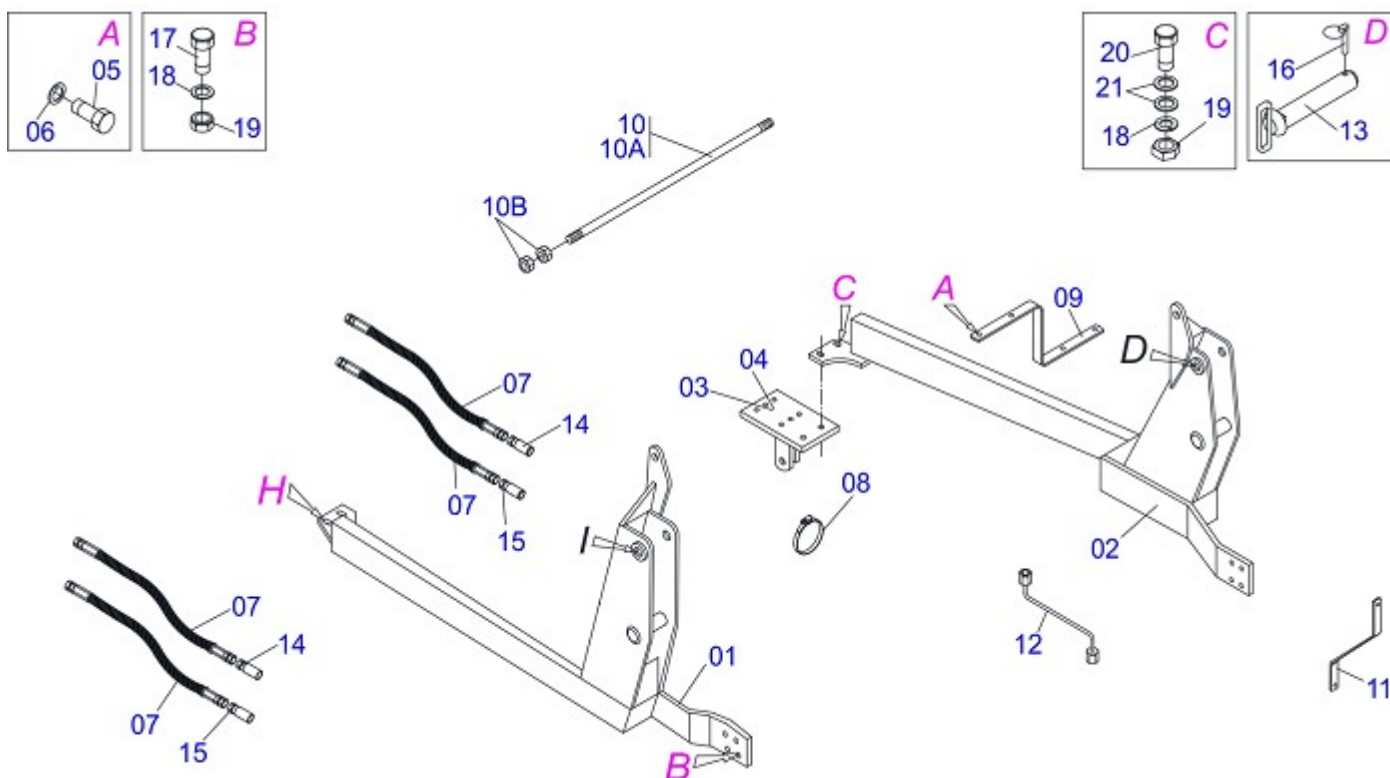
Item	Code	Description	
01	0501010096	3/8" X 2" BOLT	04
02	0511040725	1.75" X 3.37 X 3.56" HYDRAULIC CYLINDER	02
03	0511042640	1.75" X 3 X 32.28" HYDRAULIC CYLINDER	02
04	0502010477	UPPER CLAMP BODY	08
05	0511064410	1.5" X 8.1" COUPLING SHAFT	02
06	0501069146	JOINT SUPPORT PCA 800	01
07	0501069157	PLOUGH SUPPORT	01
08	0501069158	PLOUGH SUPPORT	01
09	0501069860	OUTER OIL TUBE	01
10	0501069861	INNER OIL TUBE	01
11	0501080150	3/8" X 31.49" HOSE ASSY	01
12	0501080413	3/8" X 27" TR-TC HOSE ASSY	01
13	0501080766	3/8" X 27.56" TC-TC HOSE	01
14	0501080688	3/8" X 25" TC-TC 90G HOSE	02
15	0501080723	3/8" X 31.49" TC-TC HOSE	01
16	0501080777	LH 3/8" X 25.9" TC-TC HOSE	02
17	0503010002	GREASE FITTING	06
18	0503010003	3/8" GREASE FITTING	02
19	0503010004	GREASE FITTING	02
20	0503010025	3/8" SPRING WHASHER	06
21	0503010131	3/16" X 1-1/2" COTTERPIN	10
22	0503010237	3/8" X 1" HEX BOLT G5	02
23	0503010534	3/8" X 2-1/2" COTTERPIN	10
24	0503010918	1/2" UNC BUTTERFLY NUT	02
25	0503011968	"T" ADAPTOR WITH GIRAT NUT 3/8	02
26	0503030168	HAIR PIN	04
27	0511017302	FLAT WASHER	14
28	0511019634	CONTROL LOCK	02
29	0511019660	PLOUGH SUPPORT BODY	02
30	0511019685	FLAT WASHER	12
31	0503030430	7/16 X 2" PIN LOCK	02
32	0511060289	MOBILE SUPPORT PCA 1100	01
33	0511061354	RH MOBILE TOWER	01



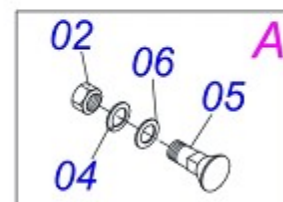
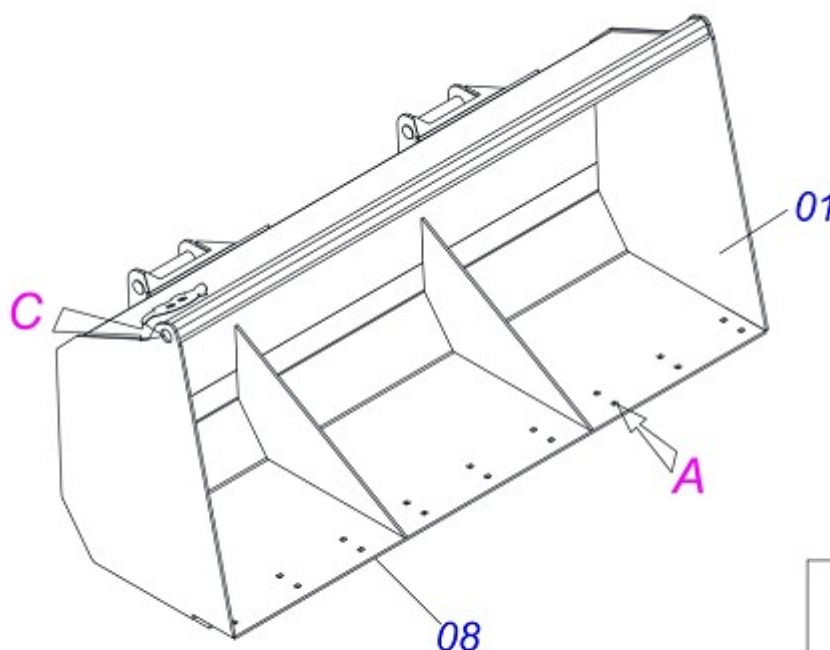
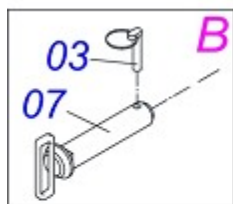
MOBILE SUPPORT ASSY

0909091329

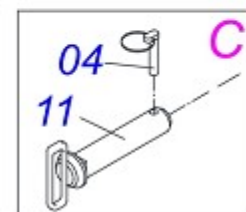
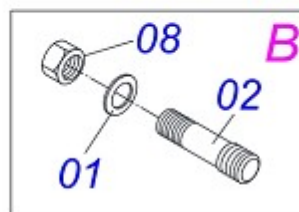
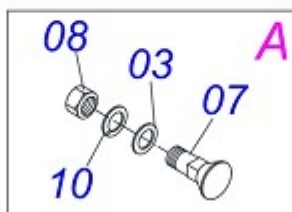
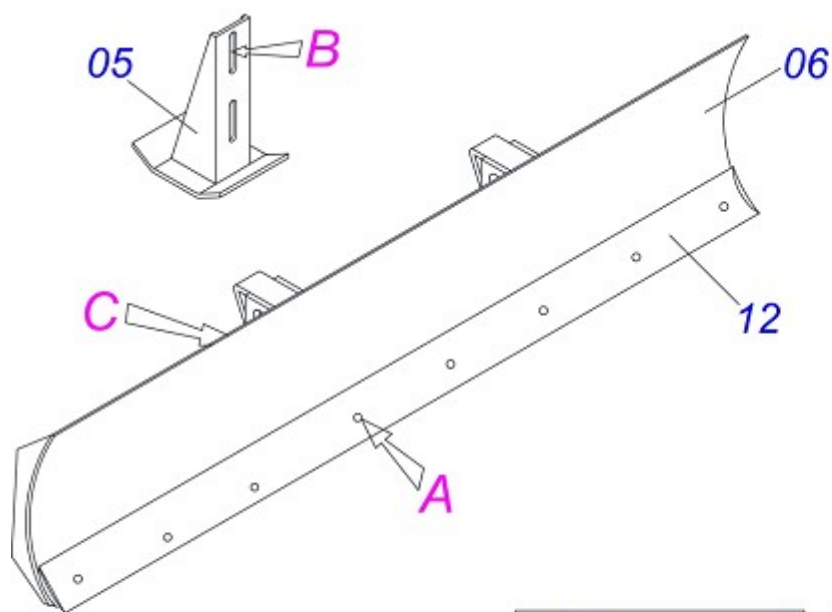
Item	Code	Description	
34	0511061355	LH MOBILE TOWER	01
35	0501069857	RIGHT RIGHT OIL TUBE	01
36	0501069858	LH RIGHT OIL TUBE	01
37	0521012777	COUPLING SHAFT	02
38	0521012823	COUPLING SHAFT	04
39	0521012868	1.4" X 5" PIVOT SHAFT	04
40	0521012869	COUPLING SHAFT	02
41	0521012870	1.46" X 6.18" PIVOT SHAFT	04
42	0531011180	UPPER CLAMP BODY	02
43	0521011903	1.48" X 1.77" X 3.93" SLEEVE INTER	04



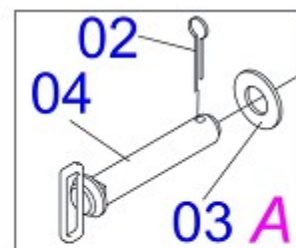
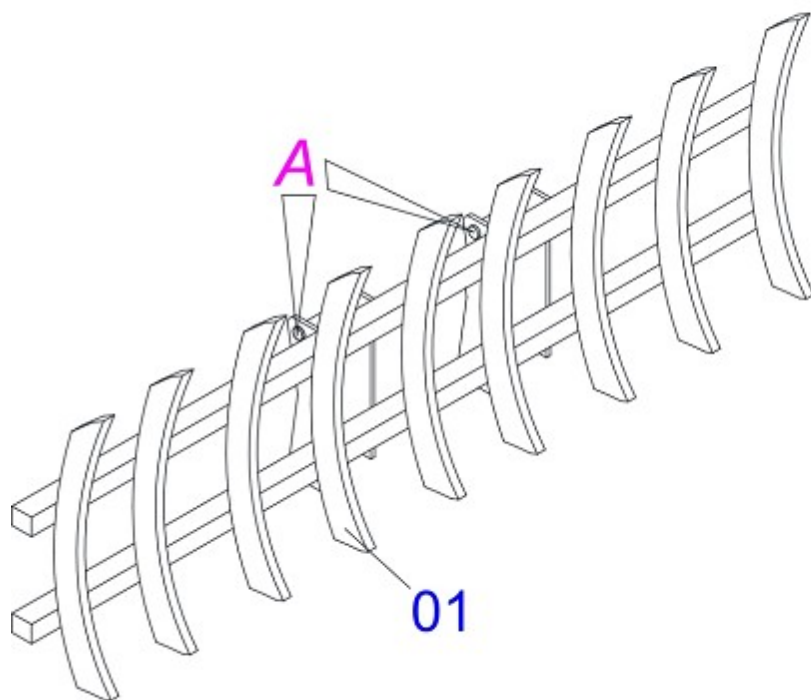
Item	Code	Description	
01	0511063957	RIGHT FRAME	01
02	0511063958	LEFT FRAME	01
03	0501067262		01
04	0501067263		01
05	0503010119	7/16" X 1-1/4" BOLT	04
06	0503010180	7/16" SPRING WASHER	08
07	0501080601	3/8" X 66.9 TC-TM HOSE	04
08	0503010246	2" TO 2 1/2" CLAMP	02
09	0531017226		02
10	0501042819	1.1/4"NC X 33.46" ROD	01
10A	0501018845	1.1/4" X 33.46" ROD	01
10B	0501010087	1.1/4" UNC NUT	04
11	0521012541	REDLIGHT SUPPORT	02
12	0501068213	5/8" WRENCH DOUBLE	01
13	0511060085	1.47" X 9.25" PIVOT SHAFT	01
14	0501053834	QUICK CONECTION (MALE) 1/2NPT	02
15	0501053835	FEMALE QUICK COUPLER	02
16	0503030430	7/16 X 2" PIN LOCK	02
17	0501011544	3/4" X 1-1/2" BOLT	04
18	0503010023	3/4" SPRING WASHER	22
19	0503010014	3/4" NUT	04
20	0501010500	3/4" X 3" BOLT	04
21	0501010322	FLAT WASHER	08



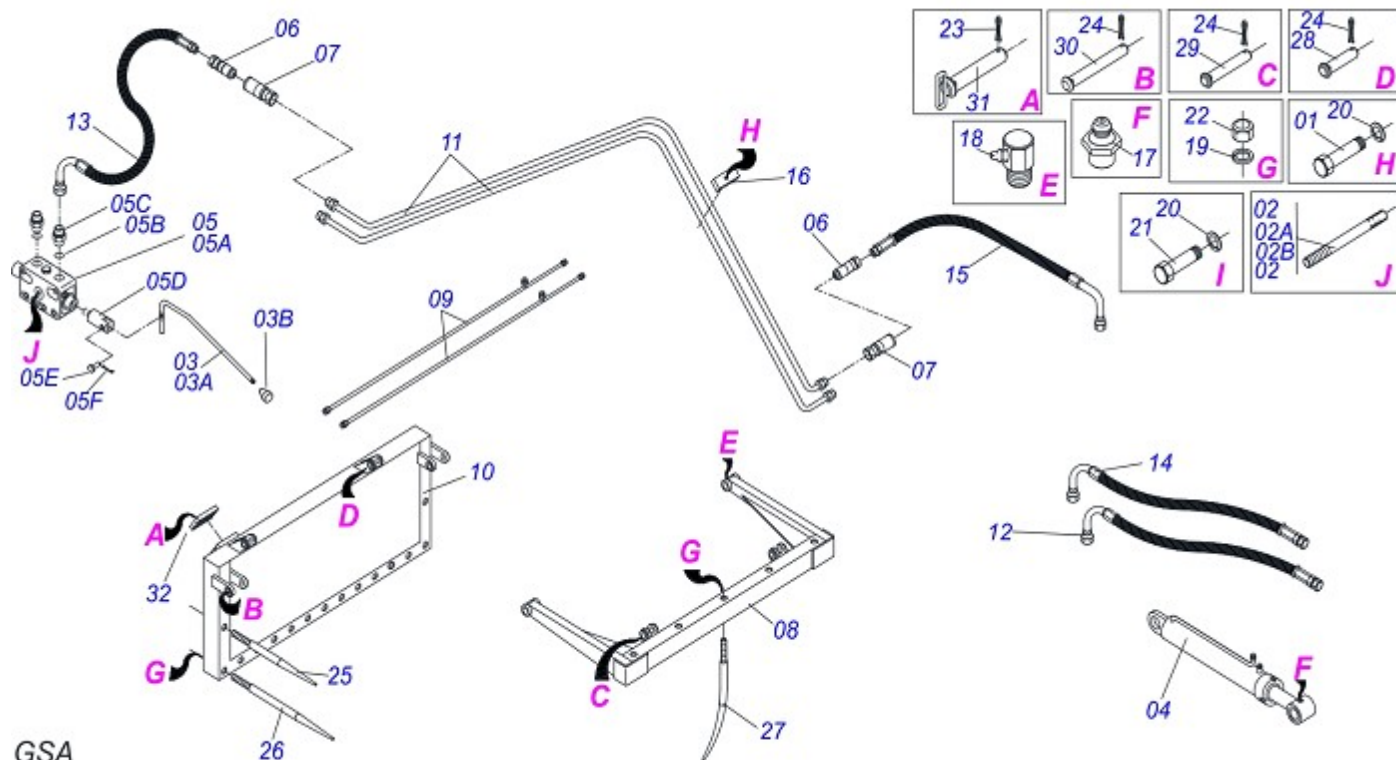
Item	Code	Description	
00	0501048045	PAC 800/1100 COMPL 1900 P ALT S0498	
01	0501069448	1925 BUCKET	01
02	0503010020	1/2" NUT	09
03	0503010534	3/8" X 2-1/2" COTTERPIN	02
04	0503011440	1/2" SPRING WASHER	09
05	0503012956	1/2" X 1-1/2" BOLT	09
06	0511017302	FLAT WASHER	09
07	0511060085	1.47" X 9.25" PIVOT SHAFT	02
08	0521011921	76.37" SCRAPER BUCKET	01



Item	Code	Description	
00	0501048065	LDA 2400 COMPL P/PCA 800/1100	
01	0501010322	FLAT WASHER	04
02	0501010571	3/4 NC X 3/4 NF X 56 PRISONER	04
03	0501012140	FLAT WASHER	08
04	0501012240	5/8" X 2-1/2" BOLT	08
05	0501063411	ESTABILIZER BRACKET	02
06	0501069112	2400MM DOZER BLADE	01
07	0503010013	5/8" NUT	08
08	0503010335	3/4" NUT	04
09	0503010534	3/8" X 2-1/2" COTTERPIN	02
10	0503011445	5/8" SPRING WASHER	08
11	0511060085	1.47" X 9.25" PIVOT SHAFT	02
12	0622360016	94.5" SCRAPER REVERSIBLE	01



Item	Code	Description	
00	0501048063	EAG 800/1100 9 TEETH ASSY S-0597	
01	0501069115	2400 ROOT RAKER	01
02	0503030430	7/16 X 2" PIN LOCK	04
03	0511019685	FLAT WASHER	04
04	0511060085	1.47" X 9.25" PIVOT SHAFT	04



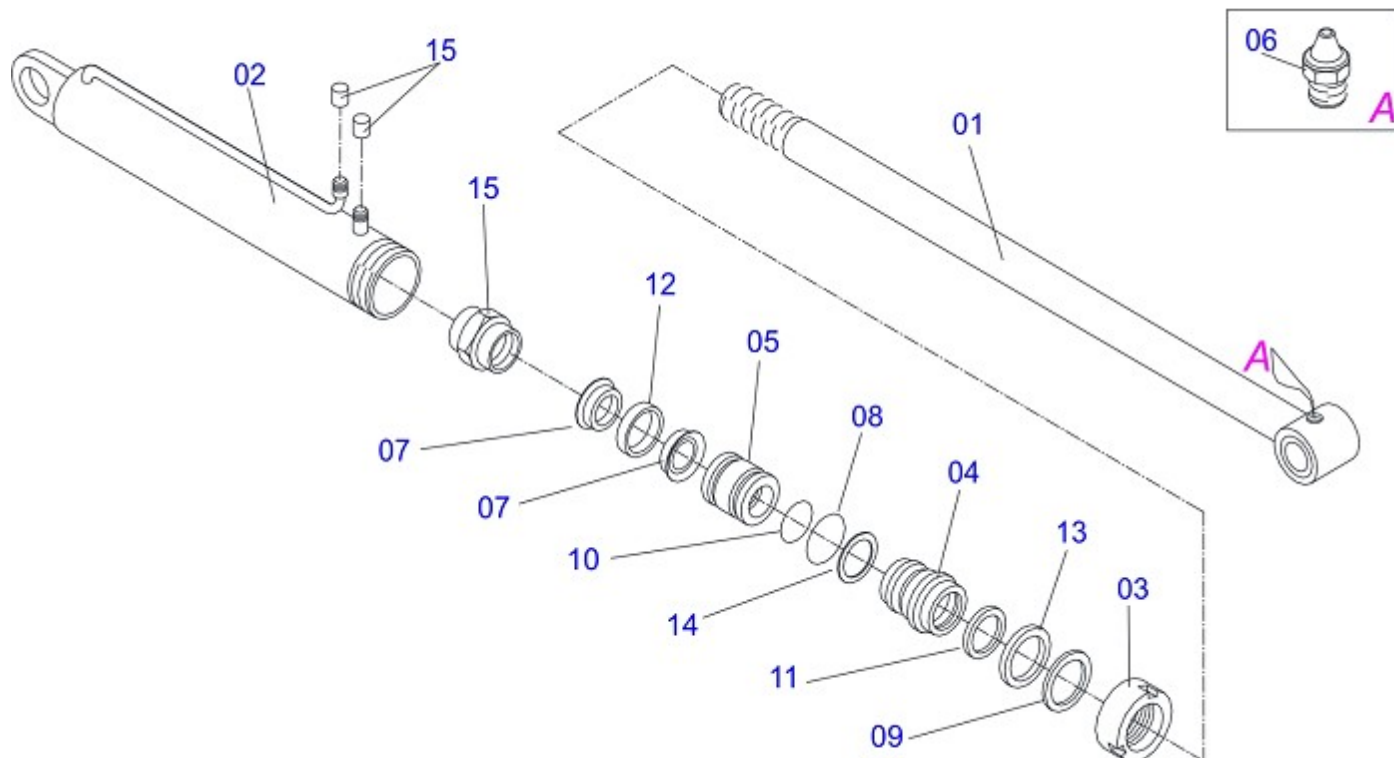
GSA

Item	Code	Description	
00	0501048091	GSA 800/1100 ASSY	
01	0501010096	3/8" X 2" BOLT	03
02	0501041496	PRISONER 3/8 UNC X 270	04
02A	0501016988	PRISONER 3/8 NC X 3/8 NC X 270	04
02B	0503010026	3/8" NUT	08
03	0501047446	CONTROL VALVE (P/COM 1/2 PCA)	01
03A	0501068681	1/2" CONTROL VALVE	01
03B	0503030878	LEVER CRANK	01
04	0501047447	1.5 X 2.5 X 16" X 9" HYDRAULIC CYLINDER	02
05	0501053055	1/2" CENTER BODY WITH 3/8" NIPPLES	01
05A	0503010423	1/2" CENTER BODY	01
05B	0503010045	2-116 N 3006-9B O'RING	02
05C	0511010111	7/8" NIPPLE	02
05D	0503030265	UPPER LEVER (PARKER 1/2")	01
05E	0521010533	0.3" X 1" COUPLING SHAFT	01
05F	0503010140	1/8" X 3/4" COTTERPIN	01
06	0501053834	QUICK CONECTION (MALE) 1/2NPT	04
07	0501053835	FEMALE QUICK COUPLER	04
08	0501068610	MOBILE FRAME	01
09	0501068686	OIL TUBE	02
10	0501069450	FIXED FRAME	01
11	0501069859	DISTRIBUTOR OIL TUBE	02
12	0501080328	3/8" X 29" TR-TC HOSE	02
13	0501080473	3/8" X 120" TC-TM HOSE	02
14	0501080599	3/8" X 25" TC-TR HOSE	02
15	0501080601	3/8" X 66.9 TC-TM HOSE	02
16	0502010477	UPPER CLAMP BODY	06
17	0503010002	GREASE FITTING	02
18	0503010004	GREASE FITTING	02
19	0503010012	1" SPRING WASHER	20
20	0503010025	3/8" SPRING WHASHER	10
21	0503010237	3/8" X 1" HEX BOLT G5	02
22	0503010340	1" UNF NUT	20

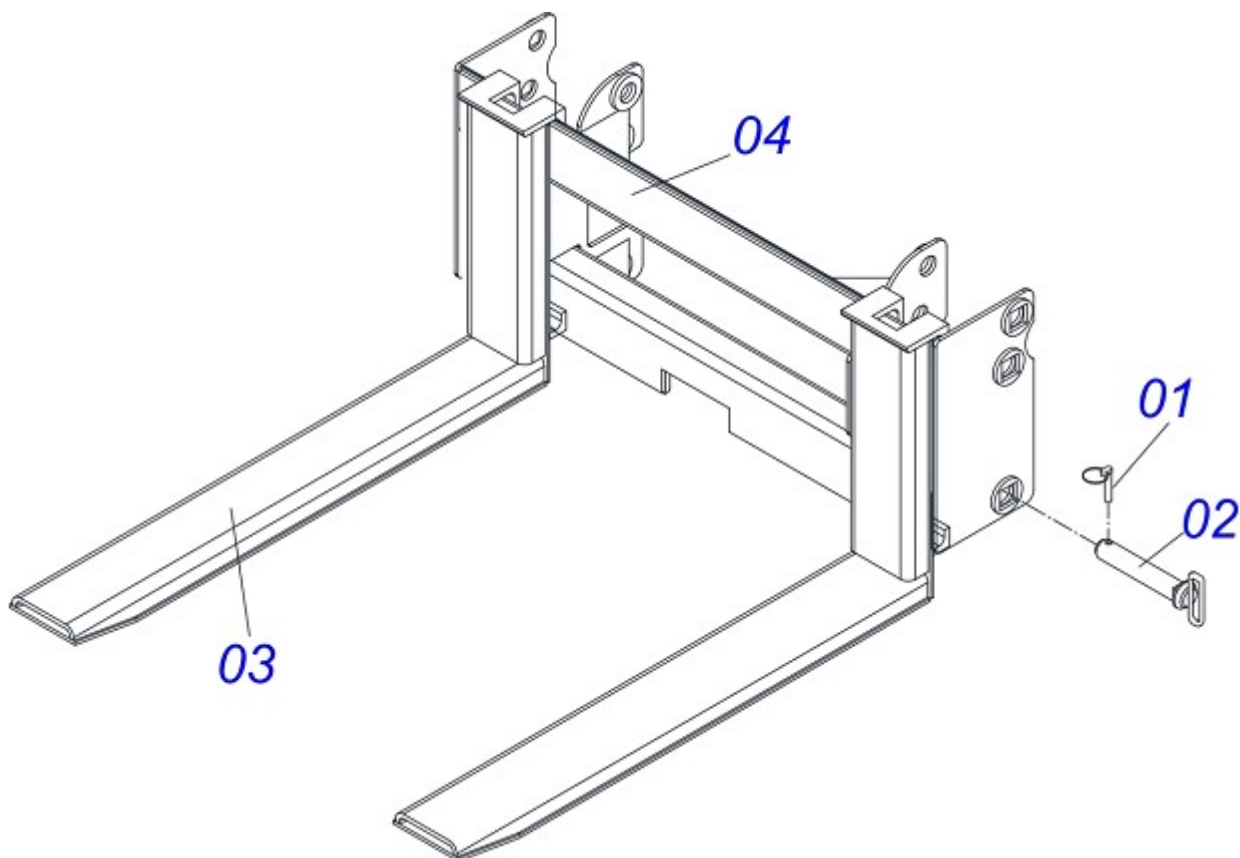


PCA MF 1100
GSA 800/1100 ASSY

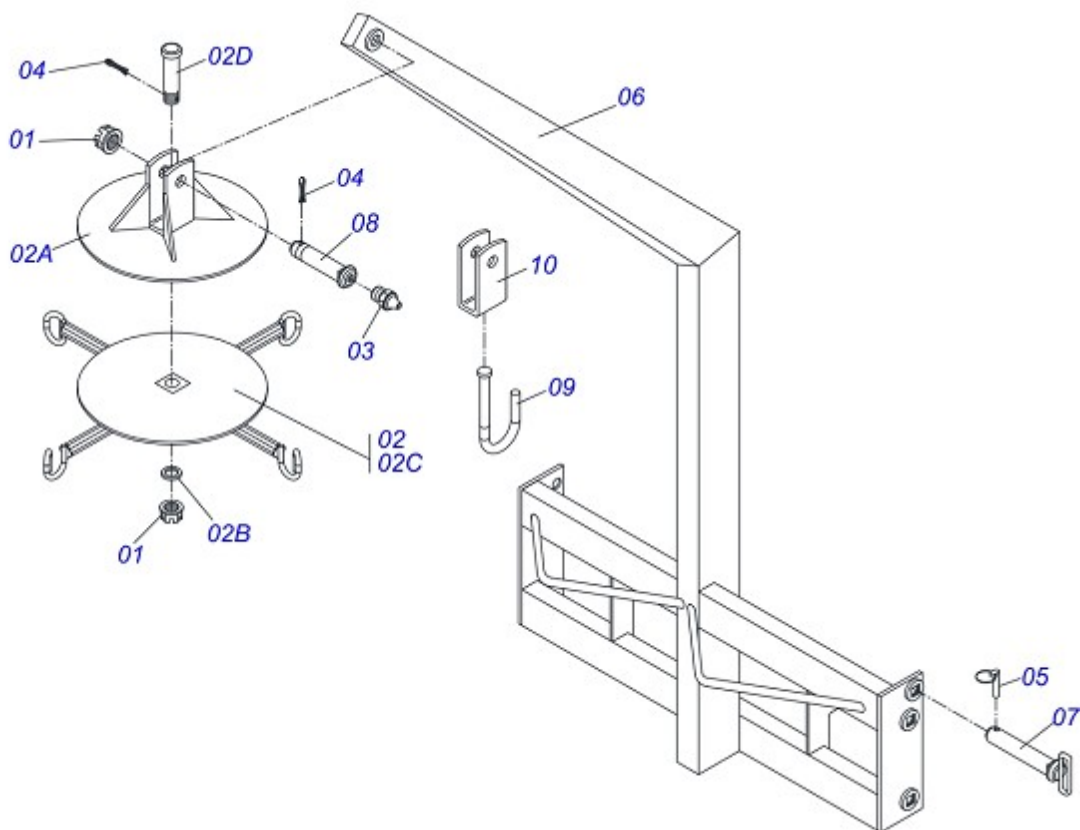
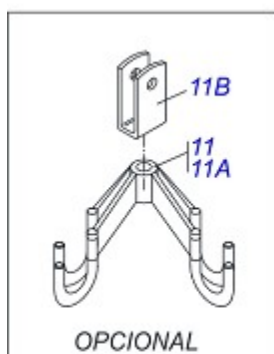
Item	Code	Description	
23	0503010534	3/8" X 2-1/2" COTTERPIN	02
24	0503010571	1/4" X 1.1/2" COTTERPIN	06
25	0511019542	1-1/2" X 26" STRAIGHT TEETH	02
26	0511019543	1-1/2" X 30" STRAIGHT TEETH	13
27	0511019544	1-1/2" X 26" BENT TOOTH	05
28	0511019621	0.9" X 2.8" COUPLING SHAFT	02
29	0511019622	0.9" X 4.0" COUPLING SHAFT	02
30	0511019623	0.9" X 5.4" COUPLING SHAFT	02
31	0511060085	1.47" X 9.25" PIVOT SHAFT	02
32	0531011180	UPPER CLAMP BODY	02



Item	Code	Description	
00	0501047447	1.5 X 2.5 X 16" X 9" HYDRAULIC CYLINDER	01
01	0501068721	1.5" X 14.1" TURNBUCLE	01
02	0501068722	63,50 X 328 CYLINDER CASE	01
03	0502010471	DETACHABLE COVER	01
04	0502010780	RING SUPPORT	01
05	0502010783	1.5" X 2.5" PISTON	01
06	0503010002	GREASE FITTING	01
07	0503010160	2500 2000 GASKET	02
08	0503010161	2-330 N 3006 9B O'RING	01
09	0503010163	D-1500 SCRAPER RING	01
10	0503010285	2-222 N 3006-9B O'RING	01
11	0503010970	W1-1650-500 PK RING G.E	01
12	0503010973	W2-2500-500 PK RING G.E	01
13	0503010989	1870-1500-375-B GASKET	01
14	0503011058	8-330 BACK-UP RING	01
15	0503011980	1" UNF LOCKNUT	01
16	0503030385	PLUG CYLINDER	02



Item	Code	Description	
00	0501048740	SAE COMPLETE FOR PCA 600/800/1100	
01	0503030430	7/16 X 2" PIN LOCK	04
02	0511060428	PIN HITCH	04
03	0511060429	CHARGING BAR	02
04	0511060430	CHARGING BAR SUPPORT	01



Item	Code	Description	
01	0501011301	1.1/2" CASTLE NUT	02
02	0501043072	CROSSPIECE ASSY GAT-R	01
02A	0511068703	U COUPLING CROSSPIECE	01
02B	0501012916	FLAT WASHER	01
02C	0501064477	CROSSPIECE	01
02D	0521010555	1-1/2" X 5.5" COUPLING SHAFT	01
03	0503010002	GREASE FITTING	01
04	0503010010	1/4" X 2.1/2" COTTERPIN	02
05	0503030430	7/16 X 2" PIN LOCK	04
06	0511060426	CROSSPIECE SUPPORT	01
07	0511060428	PIN HITCH	04
08	0521012828	1.5" X 6.8" PIVOT SHAFT	01
09	0501064475	1-1/4" HOOK	01
10	0501069722	U COUPLING HOOK	01
11	0501053565	CROSSPIECE ASSY FOR SAB/PD/PCA	01
11A	0511060427	CROSSPIECE	01
11B	0501069721	U COUPLING FOR CROSSPIECE	01



MARCHESAN

MARCHESAN IMPLEMENTOS E MÁQUINAS AGRÍCOLAS TATU S.A.

AV. Marchesan, 1979 - Post office box, 131 - CEP 15994-900 - Matão - SP - Brazil

Phone +55 16.3382-8282

(FAX Parts) + 55 16.3382. 8297 - (Export) + 55 16.3382.1003

e.mail: tatu@marchesan.com.br www.marchesan.com.br

*Drafting and Illustration = GASPARI
e.mail = jgaspari@marchesan.com.br*

**ORIGINAL PARTS
TATU**



MARCHESAN