

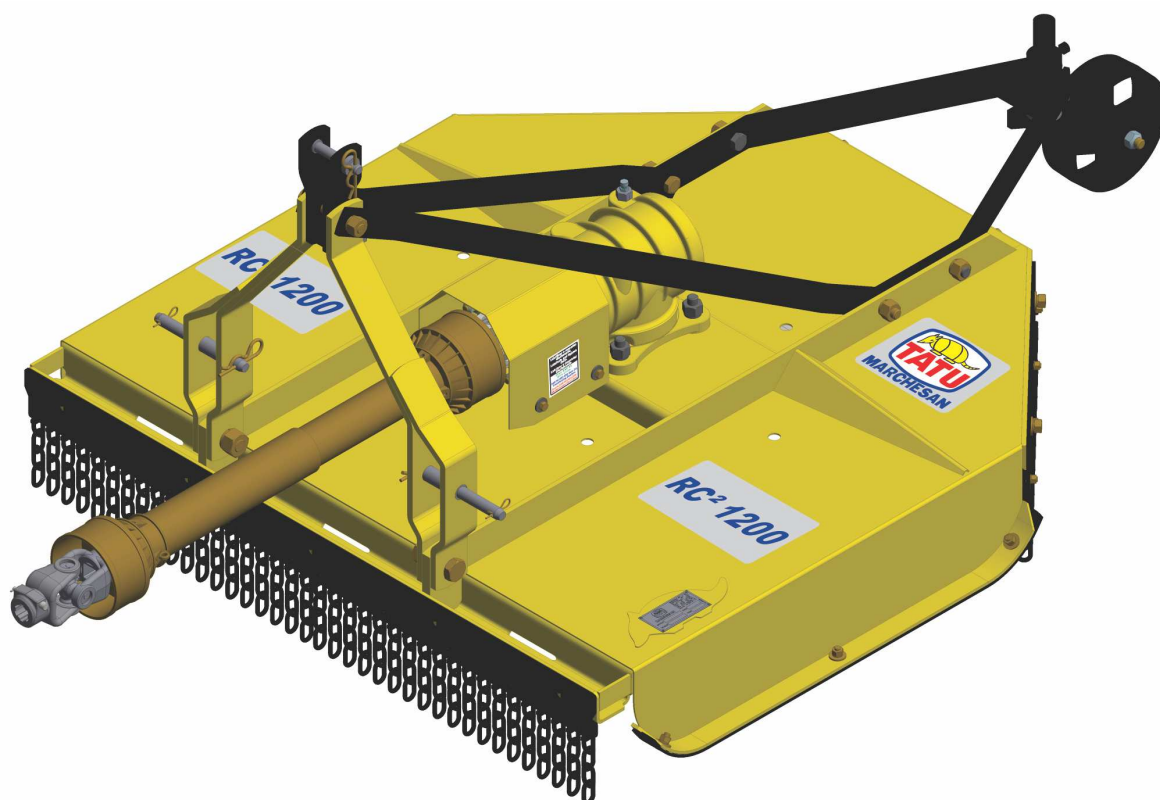
ROTARY CUTTERS

Code:

0501090549

Product:

RC2 1200



Series:

S-0214

Revision:

00

Date Revision:

JANEIRO/2021



PRODUCTS

Code	Description
0104020041	RC2 1200 C/R C/PROT CORR S-0214
0104020041C	RC2 1200 C/R C/PROT CORR EXP S-0214
0104020043	RC2 1200 C/R S/PROT CORR EXP S-0214
0104020043C	RC2 1200 C/R S/PROT CORR EXP S-0214
0104020042	RC2 1200 S/R C/PROT CORR S-0214

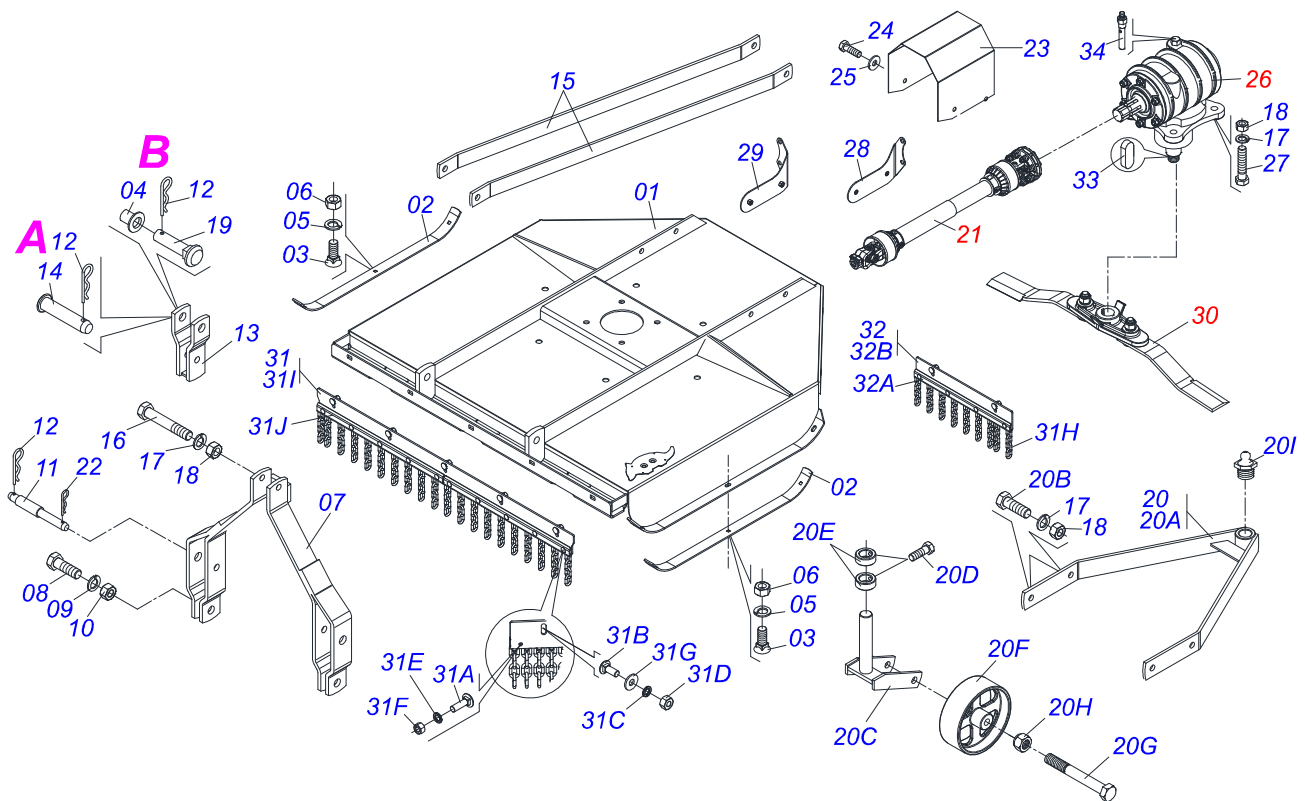
ATTENTION: IMPORTANT

Marchesan S.A. reserves the right to improve and / or modify the technical features of its products, without obligation to do the same with those products already sold and without prior knowledge of the dealer or the consumer.



INDEX

0909090575	FRAME ASSY	1
0531050565	SUPPORT ROTARY CUTTER WITH 04 CUTTER	2
0501047949	DRIVE SHAFT	3
0909090701	CARDAN 40 X 800 T1/FRI CP 0501047949 (STU)	4
0501043660	FRICTION	5
0501046851	MULTIPLIER	6
0909091430	(SHEET METAL SUPPORT)SPARE	7



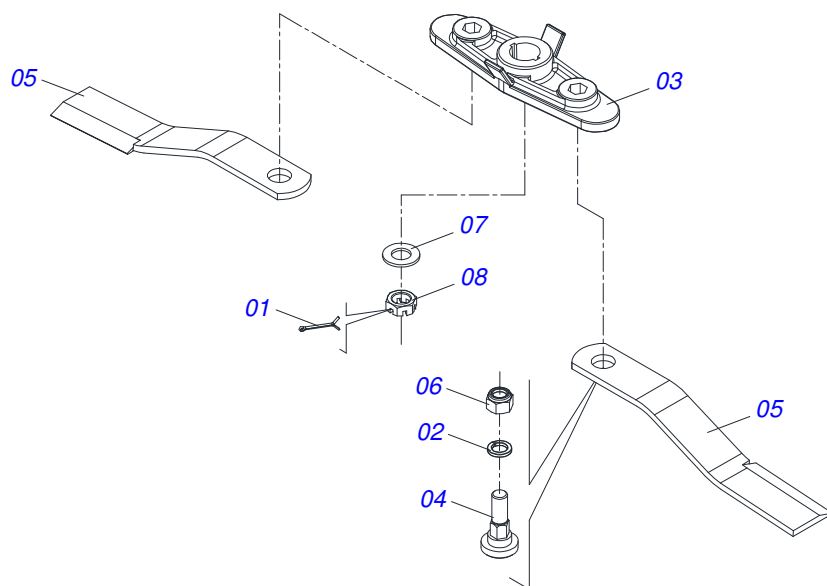
Item	Code	Description	See page	QT
01	0521064589	RC2 1200 L FRAME		01
02	0571015573	1/2" X 1.2" WITH HOLE BOLT		02
03	0503011426	7/16" X 1-1/4" BOLT		06
04	0521010443	1" SLEEVE		01
05	0503010180	7/16" SPRING WASHER		06
06	0503010244	7/16" NUT		06
07	0511069422	DRAWBAR		01
08	0501010276	BOLT		02
09	0503010012	1" SPRING WASHER		02
10	0501010059	1.5/8 NUT		02
11	0521013311	RC2 1300 AXLE		02
12	0503031035	HAIR PIN		03
13	0501060330	PIVOT DOUBLE BAR		01
14	0521010578	COUPLING SHAFT		01
15	0571015571	FRENCH HAND		02
16	0503011084	3/4" X 5" BOLT		01
17	0503010023	3/4" SPRING WASHER		09
18	0503010014	3/4" NUT		09
19	0501017591	DRAWBOLT		01
20	0501058820	SET WHEEL ASSY		01
20A	0511069419	DEPTH ARM FIXER		01
20B	0501010098	3/4" UNC BOLT		02
20C	0511069421	REAR WHEELS FORK		01
20D	0501018535	1/2 X 1 BOLT		02
20E	0551018422	SLEEVE 38,5 X 61 X 25		02
20F	0502020106	WHEEL		01
20G	0503011198	C3/4" X 6" SCREW		01
20H	0503011255	3/4" LOCK NUT		01
20I	0503010002	1800 GREASE FITTING		01
21	0501047949	DRIVE SHAFT	3	01
22	0503030168	HAIR PIN		02



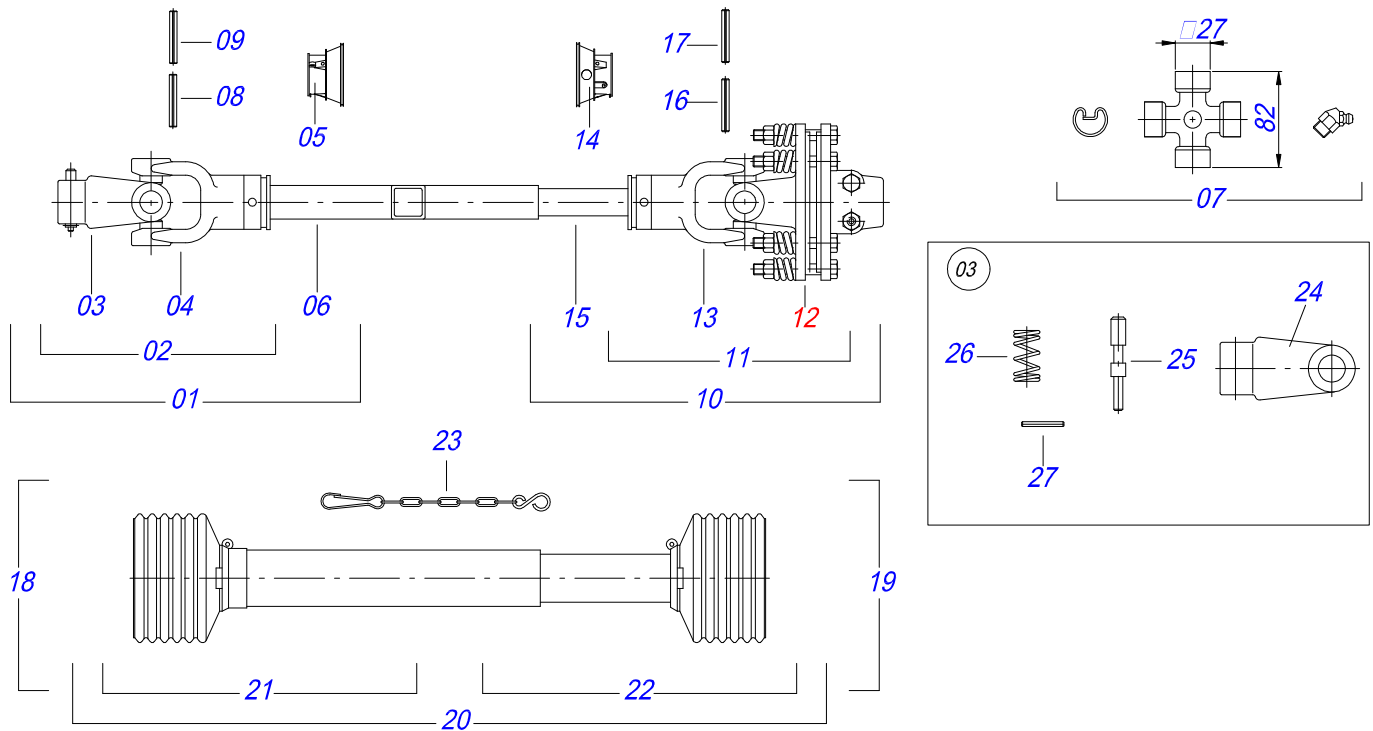
RC2 1200
FRAME ASSY

Page 1
0909090575

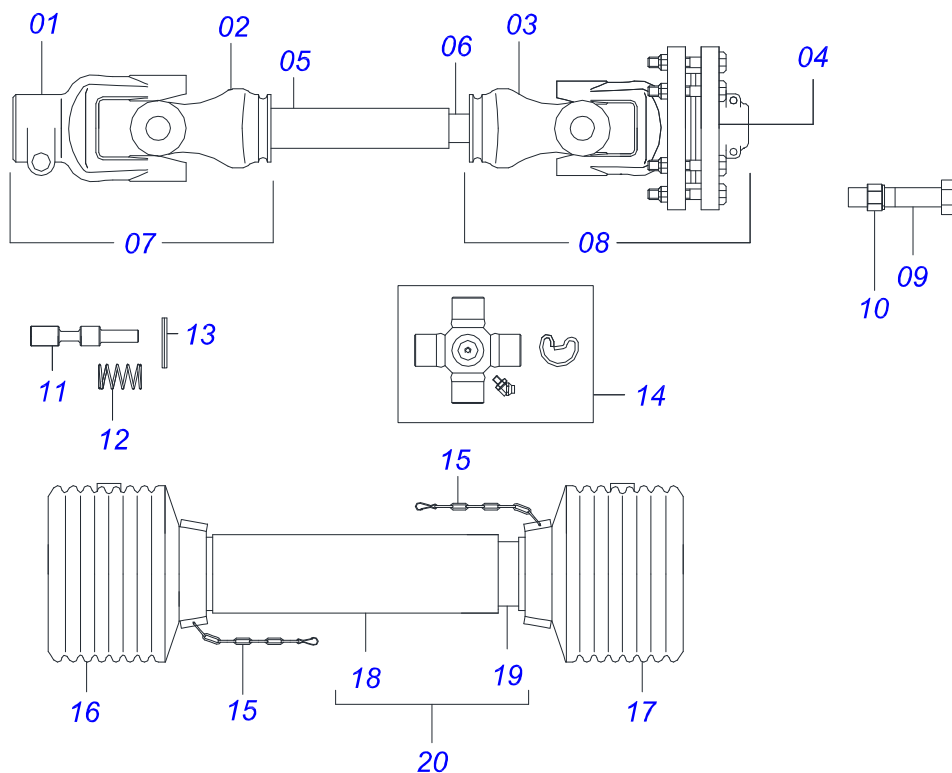
Item	Code	Description	See page	QT
23	0531017832	PROTECTION COVER		01
24	0503010256	3/8" X 3/4" BOLT		04
25	0501010984	FLAT WASHER		04
26	0501046851	MULTIPLIER	6	01
27	0503013390	3/4" UNC BOLT		04
28	0511069475	LH FIXER COVER		01
29	0511069476	RIGHT COVER FIXER		01
30	0531050565	SUPPORT ROTARY CUTTER WITH 04 CUTTER	2	01
31	0511054731	CURRENT PROTECTION		01
31A	0501010942	3/8" X 1-1/4" BOLT		22
31B	0501011600	1/2" X 1-1/4" BOLT		11
31C	0503010019	1/2" SPRING WASHER		11
31D	0503010020	1/2"NUT		11
31E	0503010025	3/8" SPRING WASHER		22
31F	0503010026	3/8" NUT		22
31G	0511017302	FLAT WASHER		11
31H	0511011774	8,00 CHAIN 4 LINK		86
31I	0571015427	CHAIN PROTECTION BODY		01
31J	0571015430	CLAW PROTECTION CHAIN		02
32	0511054751	CURRENT PROTECTION		03
32A	0571015267	CLAW PROTECTION CHAIN		03
32B	0571015268	CHAIN PROTECTION BODY		03
33	0501010536	KEYWAY SQUARE		02
34	0501110186	OIL SMALLER LEVEL INDICATOR		01



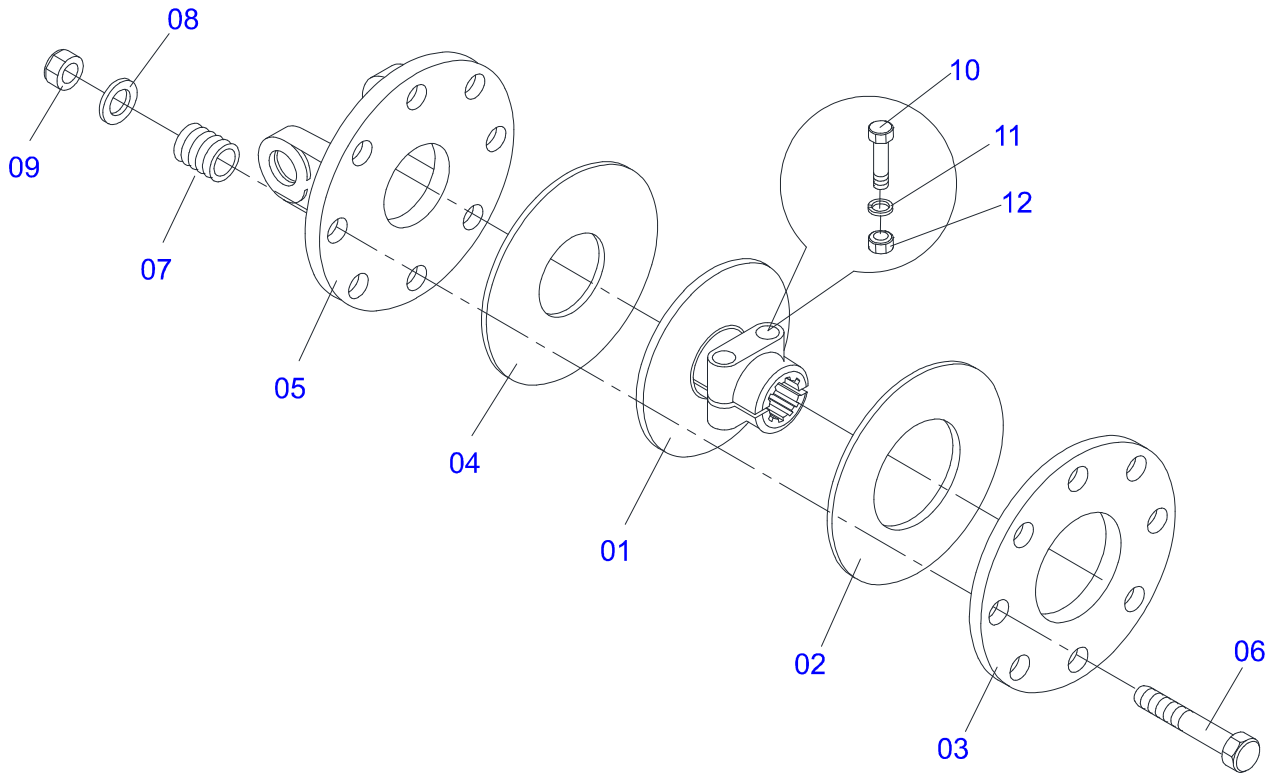
Item	Code	Description	See page	QT
001	0503010067	3/16" X 2.1/2" COTTER PIN		01
002	0503011438	SPRING WASHER		02
003	0502012508	FIXER SUPPORT CUTTERS		01
004	0541013328	FASTERNER ROCADORES		02
005	0622400053	20.5" X 3.94" X 0.5" ROTARY CUTTER		02
006	0503010063	1" SELF-ALIGNING NUT		02
007	0501017779	32 X 60 X 4.75 FLAT WASHER		01
008	0503011052	1.1/4" X 0.77" CASTLE NUT		01



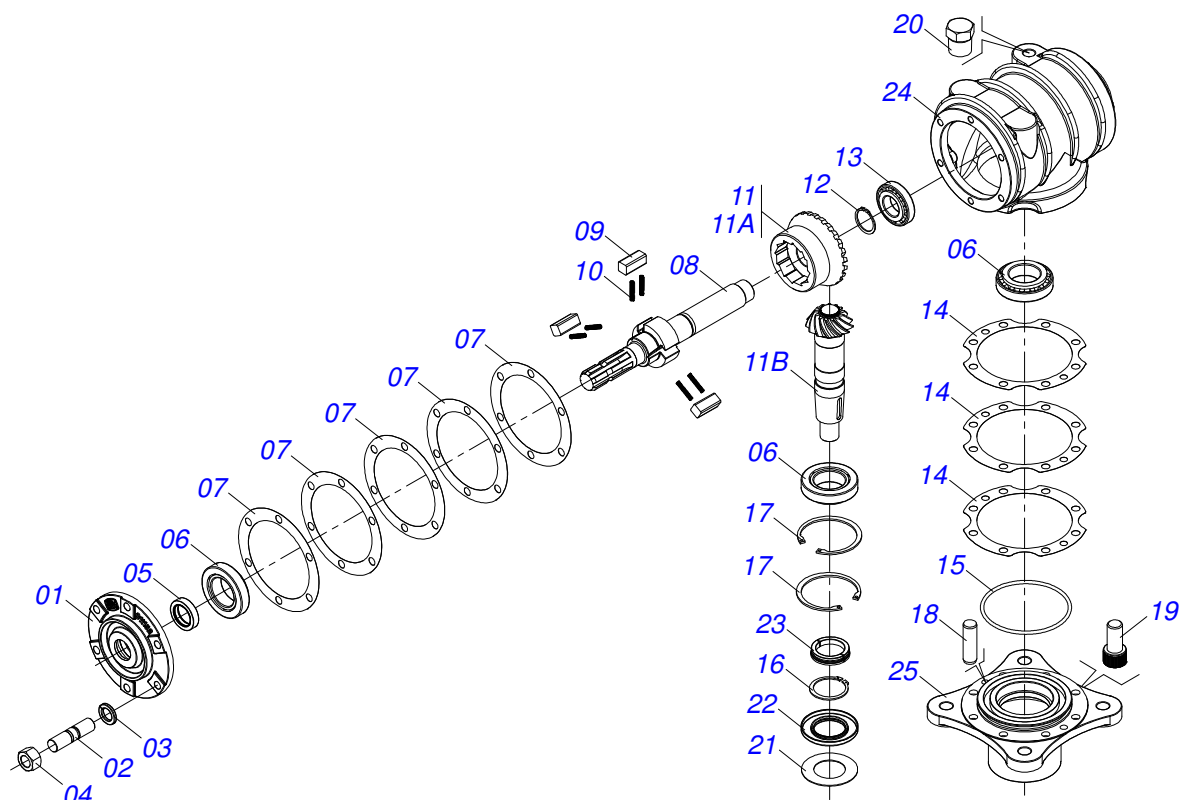
Item	Code	Description	See page	QT
01	0501051715	UNIVERSAL JOINT		01
02	0501050265	UNIVERSAL JOINT		01
03	0501050333	1-40 TERMINAL WITH HITCH		01
04	0502010565	2-40 TERMINAL W/ SH 1.5"/1.5"		01
05	0503012069	ADAPTER FOR BUSHING PROTECT		01
06	0501017429	31" X 1.5" SQUARE SLEEVE		01
07	0503010836	CARDAN CROSSPIECE		02
08	0503011069	0.4" X 2.8" SPRING PIN		01
09	0503010510	0.2" X 2.6" SPRING PIN		01
10	0501051716	UNIVERSAL JOINT WITH SHAFT		01
11	0501050466	UNIVERSAL JOINT WITH CROSSPIECE		01
12	0501043660	FRICITION	5	01
13	0502010566	3-40 TERMINAL WITH SH 1.2"/1.2"		01
14	0503012070	ADAPTER FOR AXLE PROTECTION		01
15	0501017425	1.2" X 31.5" SQUARE SHAFT		01
16	0503010361	SPRING PIN		01
17	0503010756	0.2" X 2.4" SPRING PIN		01
18	0501051701	UNIVERSAL JOINT WITH SLEEVE/PROT		01
19	0501051702	UNIVERSAL JOINT WITH AXLE/PROT		01
20	0503012077	PROTECTION ASSY		01
21	0503012078	PROTECTION FOR UNIV JOINT AND SLEEV		01
22	0503012079	PROTECTION FOR UNIV JOINT AND AXLE		01
23	0503012023	CHAIN FOR PROTECTION		02
24	0502010563	1-40 STRIATED 1.3/8" TERMINAL		01
25	0521010638	0.5" X 3.3" QUIC HITCH COUPL SHAFT		01
26	0503030518	0.5"X1.0"X 0.1" COMPRESSION SPRING		01
27	0503010838	0.1" X 0.8" SPRING PIN		01



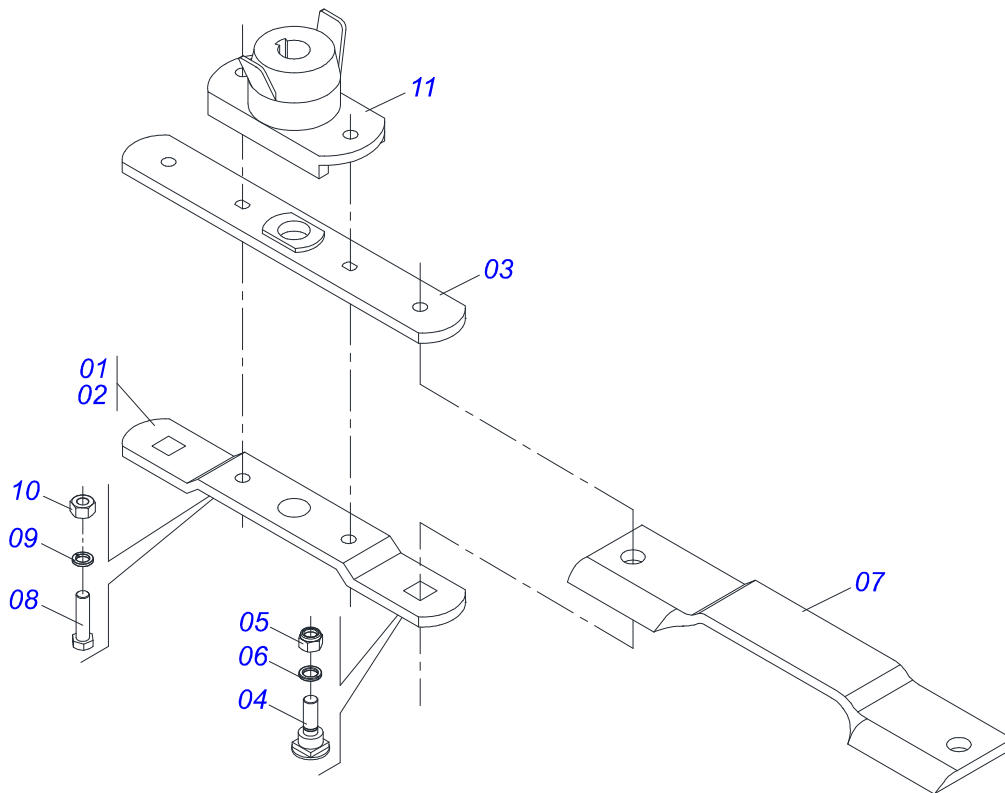
Item	Code	Description	See page	QT
01	0503017647	TERMINAL		01
02	0503017648	TERMINAL		01
03	0503017649	TERMINAL		01
04	0503062339	FRICTION		01
05	0503017652	TUBE		01
06	0503017653	BAR		01
07	0503062340	JOINT		01
08	0503062341	JOINT		01
09	0503017645	HEXAGON BOLT		06
10	0503017646	NUT		06
11	0503017626	COUPLING SHAFT		01
12	0503017627	HITCH SPRING		01
13	0503017628	COTTERPIN		01
14	0503017644	CROSSPIECE		02
15	0503017631	CHAIN ASSY		01
16	0503017632	COVER		01
17	0503017633	COVER		01
18	0503017677	PLASTIC TUBE		01
19	0503017678	PLASTIC TUBE		01
20	0503062352	COMPLETE PROTECTION		01



Item	Code	Description	See page	QT
01	0503011869	CENTRAL FLANGE		01
02	0503031478	OUTER FRICTION DISC		01
03	0503011870	REAR FLANGE		01
04	0503031474	INNER FRICTION DISC		01
05	0503011868	FRONT FLANGE		01
06	0503010752	1/2" X 3.1/2" BOLT		08
07	0503030630	1.02"X1.3"X0.2" COMPRESSION SPRING		08
08	0511017302	FLAT WASHER		08
09	0503011336	1/2" HEX SELF ADJUSTING NUT		08
10	0503010741	1/2" X 2-3/4" BOLT		02
11	0503010019	1/2" SPRING WASHER		02
12	0503010060	1/2" NUT		02



Item	Code	Description	See page	QT
01	0502011152	SMALLER COVER		01
02	0503030084	1/2" X 1/2" X 2.0" STUD		06
03	0503011440	SPRING WASHER		06
04	0503010028	1/2" NUT		06
05	0503011171	00912-BRG SEAL		01
06	0503010006	32210 ROLLER BEARING		03
07	0503030783	7.1" X 5.3" X 0.008" JOINT		05
08	0503050063	UPPER AXLE		01
09	0501010649	RATCHET CLICK		03
10	0503030051	0.2" X 1" X 0.1" COMPRESSION SPRING		06
11	0503060210	CROWN PINION SET		01
11A	0503050074	25Z CONICAL GEAR		01
11B	0503061048	PINION		01
12	0503010217	501040 CLAMPING RING (FOR AXLE)		01
13	0503010037	30207 ROLLER BEARING		01
14	0503030785	7.9" X 5.9" X 0.008" JOINT		03
15	0503010286	2-355 N 3006-9B O'RING		01
16	0503010396	501060 CLAMPING RING (FOR AXLE)		01
17	0503011190	SEAL RING		02
18	0503017877	PIN GUIDE		02
19	0503010562	1/2" X 1" BOLT		08
20	0503031604	1/2" BSP PLUG		01
21	0521018064	FLAT WASHER		01
22	0503011047	5089 SEAL		01
23	0511010142	LOCK RING		01
24	0502010984	LEFT MULTIPLIER BOX		01
25	0502011393	LOWER HUB		01



Item	Code	Description	See page	QT
01	0501056326	SUPPORT WITH ROTARY CUTTER BLADES		01
02	0561017368	ROTARY LOWER SUPPORT		01
03	0561017308	SUPPORT UPPER BASE		01
04	0511019000	BOLT		02
05	0503010812	7/8" UNF SELF LOCKING NUT		02
06	0503011447	SPRING WASHER		02
07	0622400057	21.6" X 3.94" X 0.5" ROTARY CUTTER		02
08	0503010901	3/4UNC 3.1/2 BOLT		02
09	0503010023	3/4" SPRING WASHER		02
10	0503010014	3/4" NUT		02
11	0502012453	SUPPORT FLANGE		01



www.marchesan.com.br



Technical Publications | Elaboration and Revision
JOSÉ DOMINGOS GASPARI